

Data Path : Z:\pestpcbsrv\HPCHEM1\ECD_L\Data\PL012423\
 Data File : PL080486.D
 Signal(s) : Signal #1: ECD1A.ch Signal #2: ECD2B.ch
 Acq On : 24 Jan 2023 11:09
 Operator : AR\AJ
 Sample : PB150424BS
 Misc :
 ALS Vial : 6 Sample Multiplier: 1

Instrument :
 ECD_L
 ClientSampleId :
 PB150424BS

Integration File signal 1: autoint1.e
 Integration File signal 2: autoint2.e
 Quant Time: Jan 24 20:39:40 2023
 Quant Method : Z:\pestpcbsrv\HPCHEM1\ECD_L\methods\PL012023.M
 Quant Title : GC Extractables
 QLast Update : Sun Jan 22 23:56:48 2023
 Response via : Initial Calibration
 Integrator: ChemStation

Volume Inj. : 1 µl
 Signal #1 Phase : ZB-MR2 Signal #2 Phase: ZB-MR1
 Signal #1 Info : 30M x 0.32mm x0.2 Signal #2 Info : 30M x 0.32mm x0.5µm

	Compound	RT#1	RT#2	Resp#1	Resp#2	ng/ml	ng/ml

System Monitoring Compounds							
1)	SA Tetrachlo...	3.353	2.689	54830195	53120628	25.564	24.185
28)	SA Decachlor...	8.792	7.838	46556501	58196551	26.592	24.426
Target Compounds							
2)	A alpha-BHC	3.801	3.190	162.1E6	149.9E6	51.175	47.117
3)	MA gamma-BHC...	4.130	3.519	150.8E6	140.3E6	51.313	46.961
4)	MA Heptachlor	4.714	3.860	147.9E6	144.5E6	50.054	45.411
5)	MB Aldrin	5.052	4.139	139.7E6	138.3E6	51.047	46.896
6)	B beta-BHC	4.326	3.814	64480064	60454836	47.237	45.297
7)	B delta-BHC	4.569	4.045	148.3E6	137.0E6	51.237	47.498
8)	B Heptachlo...	5.476	4.642	127.6E6	127.8E6	49.317	45.932
9)	A Endosulfan I	5.858	5.012	115.4E6	116.0E6	48.885	44.577
10)	B gamma-Chl...	5.731	4.893	126.8E6	127.9E6	50.223	45.122
11)	B alpha-Chl...	5.810	4.957	125.3E6	128.5E6	49.651	44.866
12)	B 4,4'-DDE	5.989	5.150	112.0E6	110.7E6	50.296	46.920
13)	MA Dieldrin	6.133	5.276	122.7E6	128.5E6	51.270	47.517
14)	MA Endrin	6.358	5.551	107.4E6	111.2E6	49.681m	47.890
15)	B Endosulfa...	6.578	5.845	105.5E6	108.9E6	46.014	52.238
16)	A 4,4'-DDD	6.502	5.703	94719609	91601110	51.703	48.745
17)	MA 4,4'-DDT	6.815	5.955	96997541	96292948	46.686	45.821
18)	B Endrin al...	6.708	6.025	87135581	89022820	52.384	48.750
19)	B Endosulfa...	6.942	6.248	104.5E6	108.6E6	50.474	46.715
20)	A Methoxychlor	7.293	6.533	53367677	54838591	48.371	45.192
21)	B Endrin ke...	7.422	6.753	110.9E6	121.6E6	50.268	47.632
22)	Mirex	7.894	6.937	83358468	105.7E6	48.470	46.437

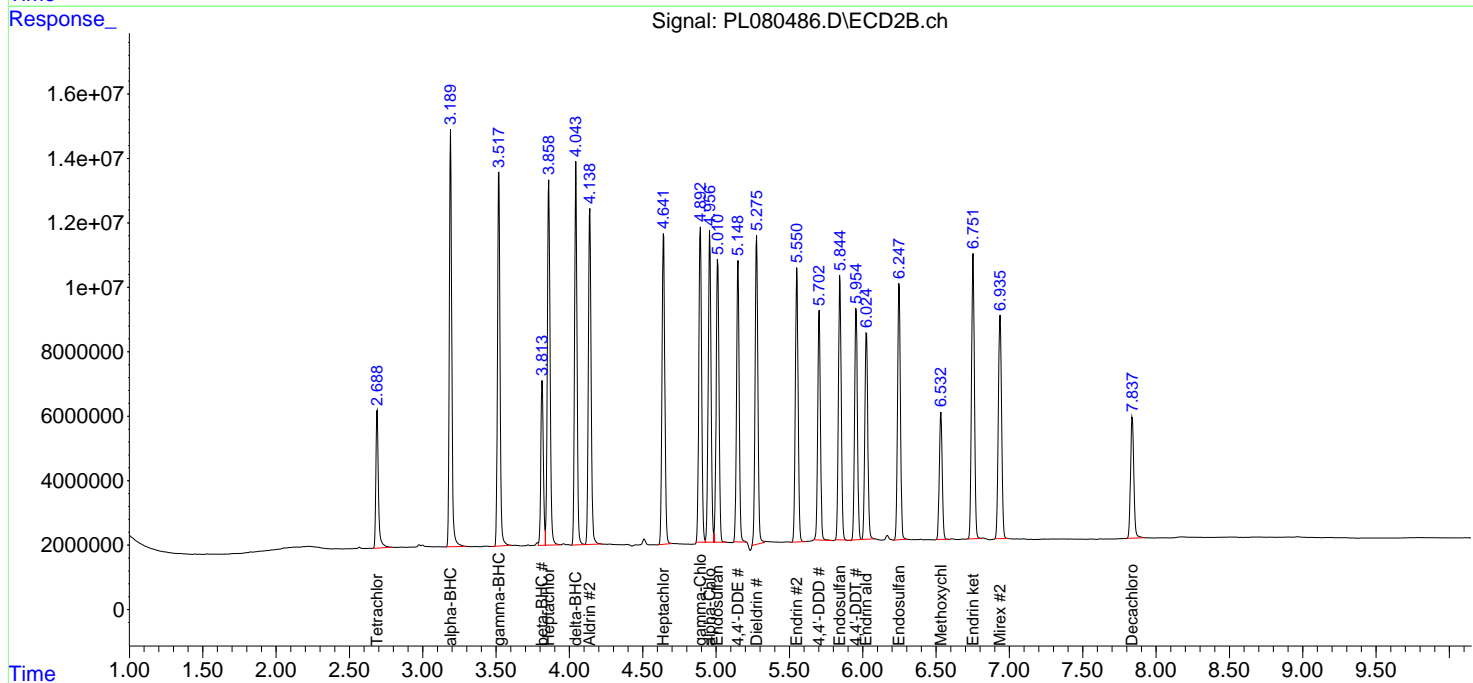
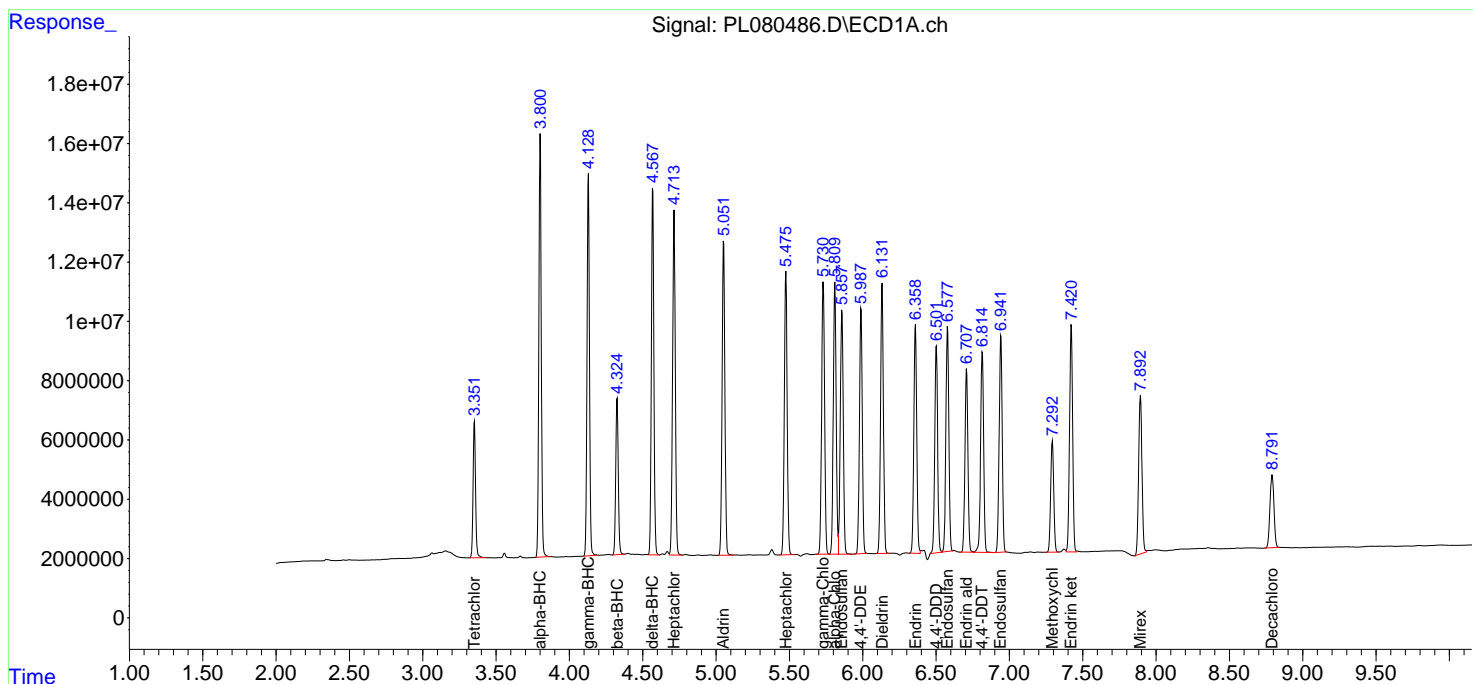
(f)=RT Delta > 1/2 Window (#)=Amounts differ by > 25% (m)=manual int.

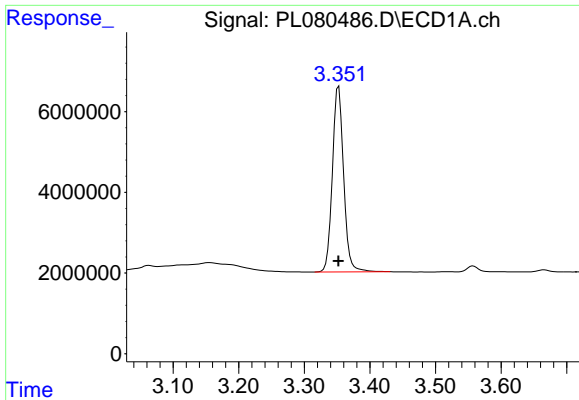
Data Path : Z:\pestpcbsrv\HPCHEM1\ECD_L\Data\PL012423\
 Data File : PL080486.D
 Signal(s) : Signal #1: ECD1A.ch Signal #2: ECD2B.ch
 Acq On : 24 Jan 2023 11:09
 Operator : AR\AJ
 Sample : PB150424BS
 Misc :
 ALS Vial : 6 Sample Multiplier: 1

Instrument :
 ECD_L
 ClientSampleId :
 PB150424BS

Integration File signal 1: autoint1.e
 Integration File signal 2: autoint2.e
 Quant Time: Jan 24 20:39:40 2023
 Quant Method : Z:\pestpcbsrv\HPCHEM1\ECD_L\methods\PL012023.M
 Quant Title : GC Extractables
 QLast Update : Sun Jan 22 23:56:48 2023
 Response via : Initial Calibration
 Integrator: ChemStation

Volume Inj. : 1 µl
 Signal #1 Phase : ZB-MR2 Signal #2 Phase: ZB-MR1
 Signal #1 Info : 30M x 0.32mm x0.2 Signal #2 Info : 30M x 0.32mm x0.5µm

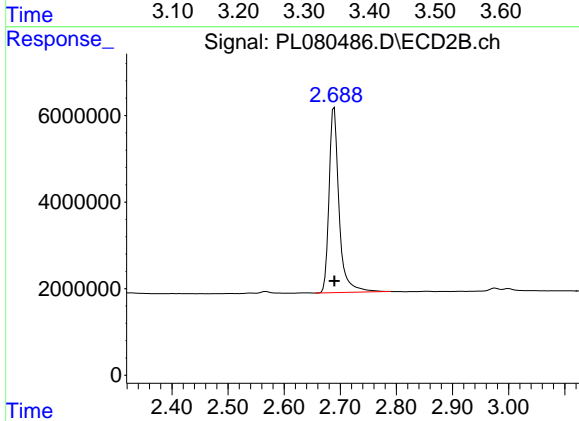




#1 Tetrachloro-m-xylene

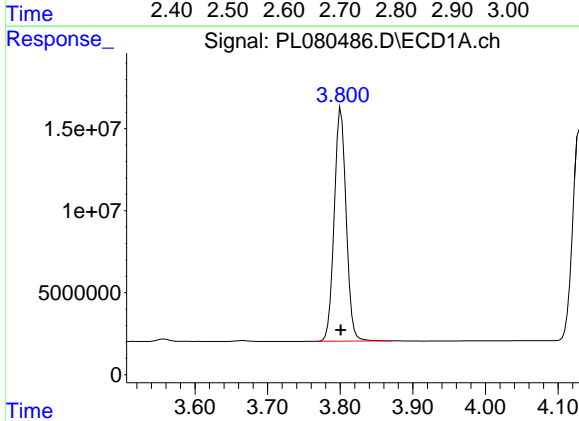
R.T.: 3.353 min
 Delta R.T.: 0.000 min
 Response: 54830195
 Conc: 25.56 ng/ml

Instrument :
 ECD_L
 ClientSampleId :
 PB150424BS



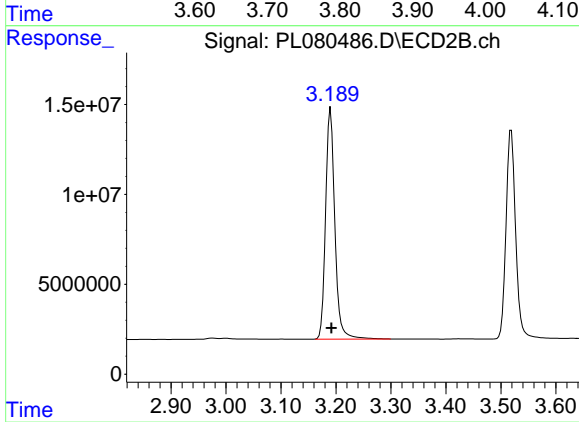
#1 Tetrachloro-m-xylene

R.T.: 2.689 min
 Delta R.T.: 0.000 min
 Response: 53120628
 Conc: 24.18 ng/ml



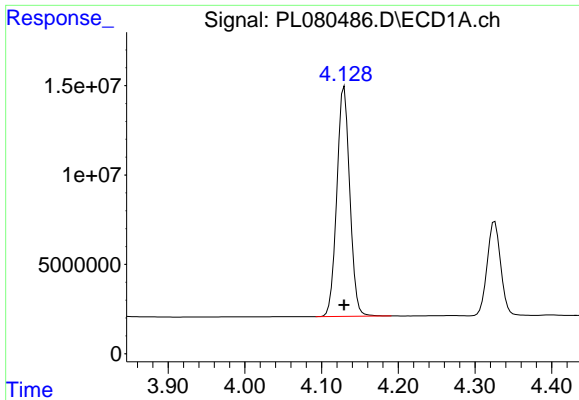
#2 alpha-BHC

R.T.: 3.801 min
 Delta R.T.: 0.000 min
 Response: 162125146
 Conc: 51.18 ng/ml



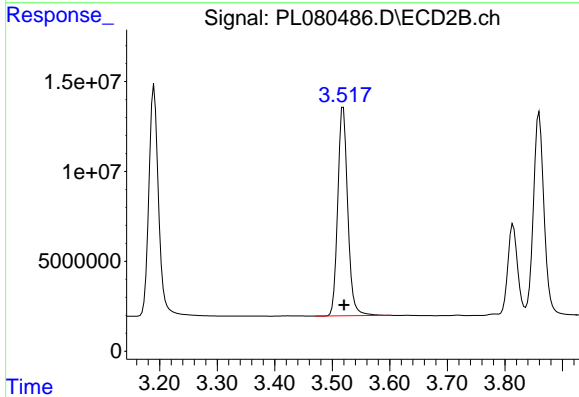
#2 alpha-BHC

R.T.: 3.190 min
 Delta R.T.: -0.001 min
 Response: 149852945
 Conc: 47.12 ng/ml

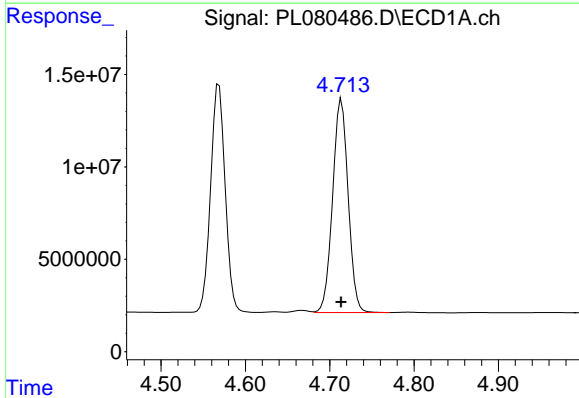


#3 gamma-BHC (Lindane)
 R.T.: 4.130 min
 Delta R.T.: 0.000 min
 Response: 150848690
 Conc: 51.31 ng/ml

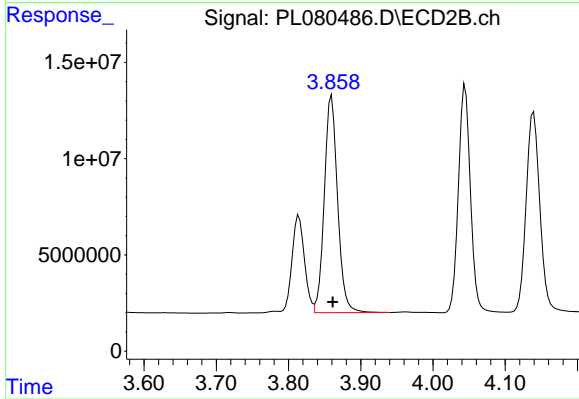
Instrument :
 ECD_L
 ClientSampleId :
 PB150424BS



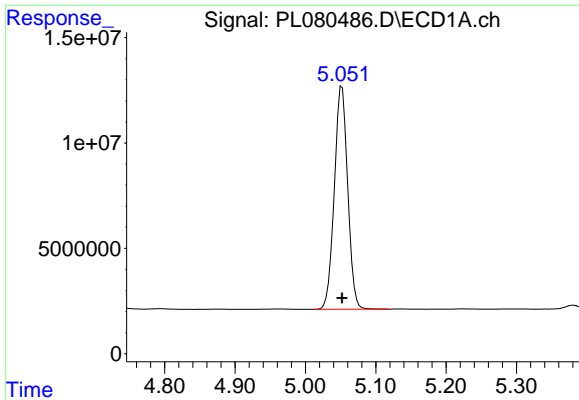
#3 gamma-BHC (Lindane)
 R.T.: 3.519 min
 Delta R.T.: -0.001 min
 Response: 140285931
 Conc: 46.96 ng/ml



#4 Heptachlor
 R.T.: 4.714 min
 Delta R.T.: 0.000 min
 Response: 147920743
 Conc: 50.05 ng/ml



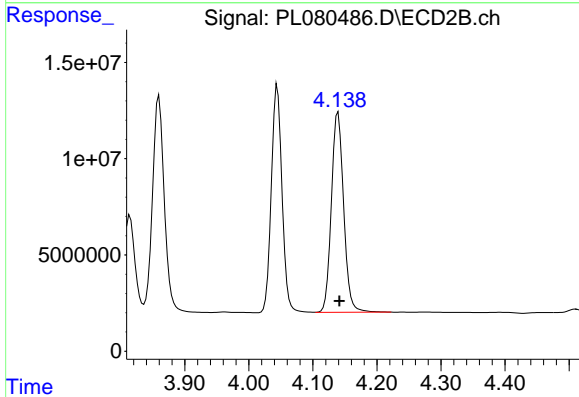
#4 Heptachlor
 R.T.: 3.860 min
 Delta R.T.: -0.002 min
 Response: 144515091
 Conc: 45.41 ng/ml



#5 Aldrin

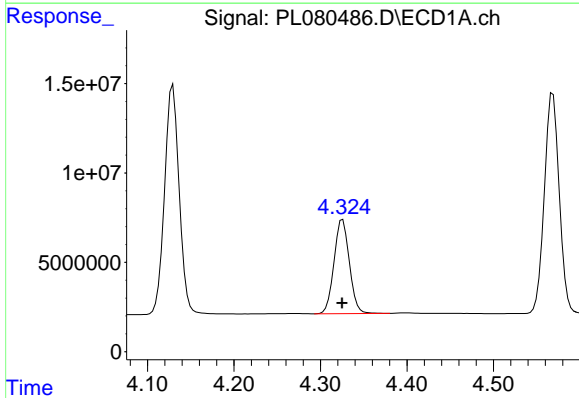
R.T.: 5.052 min
 Delta R.T.: 0.000 min
 Response: 139652334
 Conc: 51.05 ng/ml

Instrument :
 ECD_L
 ClientSampleId :
 PB150424BS



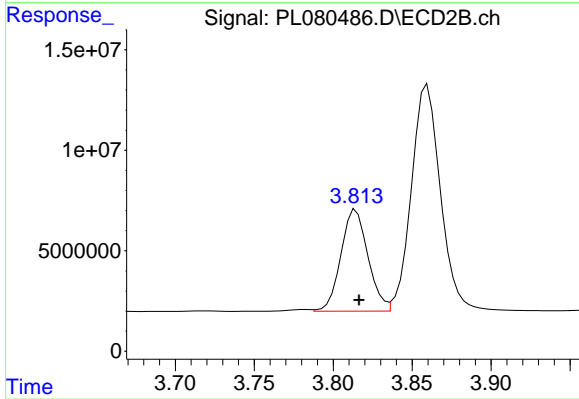
#5 Aldrin

R.T.: 4.139 min
 Delta R.T.: -0.002 min
 Response: 138322606
 Conc: 46.90 ng/ml



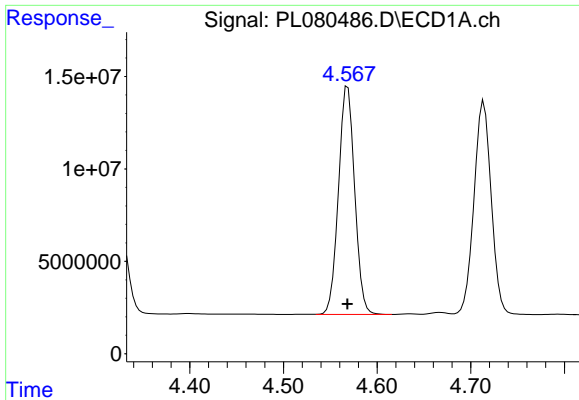
#6 beta-BHC

R.T.: 4.326 min
 Delta R.T.: 0.000 min
 Response: 64480064
 Conc: 47.24 ng/ml



#6 beta-BHC

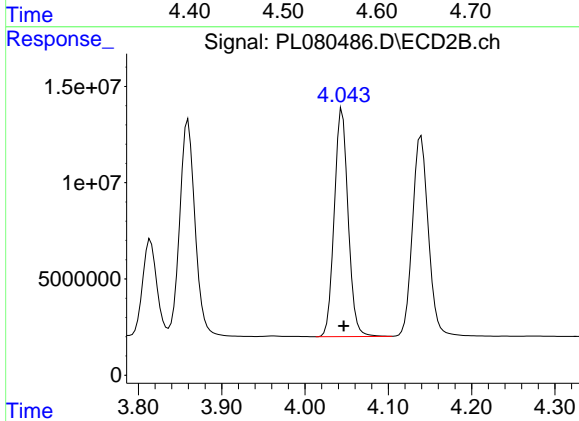
R.T.: 3.814 min
 Delta R.T.: -0.002 min
 Response: 60454836
 Conc: 45.30 ng/ml



#7 delta-BHC

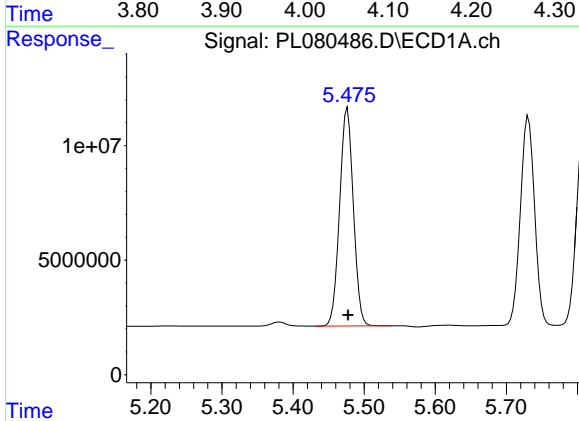
R.T.: 4.569 min
 Delta R.T.: 0.000 min
 Response: 148330824
 Conc: 51.24 ng/ml

Instrument :
 ECD_L
 ClientSampleId :
 PB150424BS



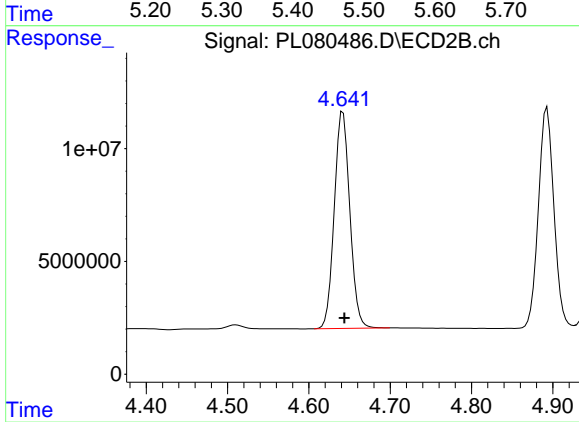
#7 delta-BHC

R.T.: 4.045 min
 Delta R.T.: -0.002 min
 Response: 137004098
 Conc: 47.50 ng/ml



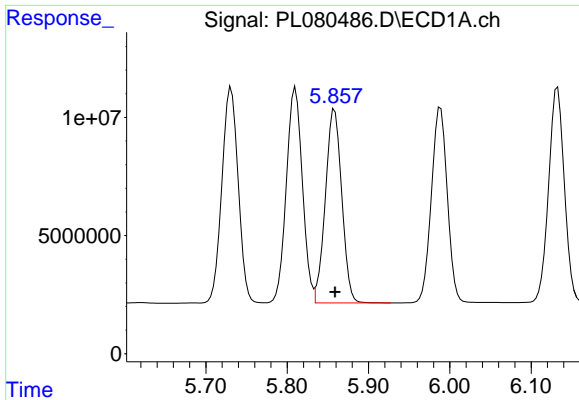
#8 Heptachlor epoxide

R.T.: 5.476 min
 Delta R.T.: 0.000 min
 Response: 127585084
 Conc: 49.32 ng/ml



#8 Heptachlor epoxide

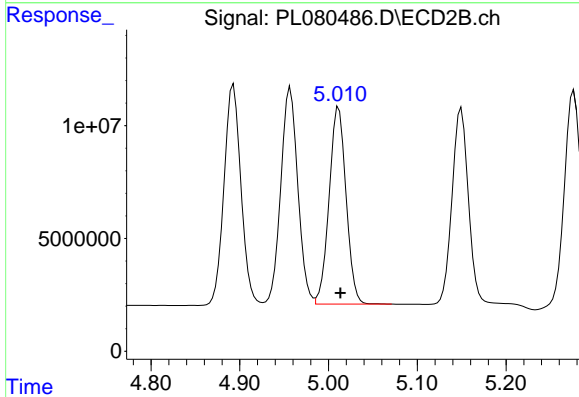
R.T.: 4.642 min
 Delta R.T.: -0.002 min
 Response: 127798894
 Conc: 45.93 ng/ml



#9 Endosulfan I

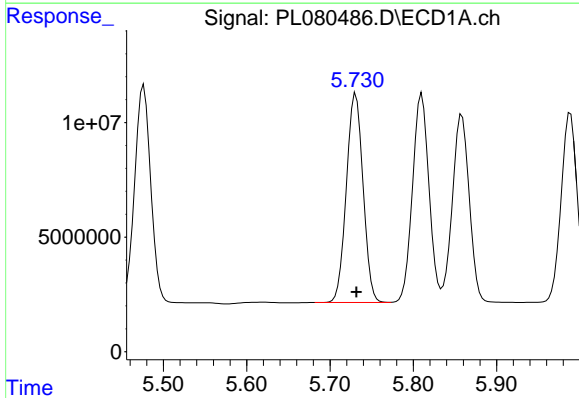
R.T.: 5.858 min
 Delta R.T.: 0.000 min
 Response: 115439447
 Conc: 48.88 ng/ml

Instrument :
 ECD_L
 ClientSampleId :
 PB150424BS



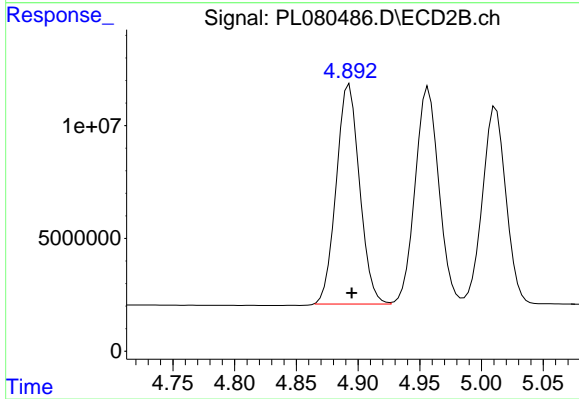
#9 Endosulfan I

R.T.: 5.012 min
 Delta R.T.: -0.002 min
 Response: 115959074
 Conc: 44.58 ng/ml



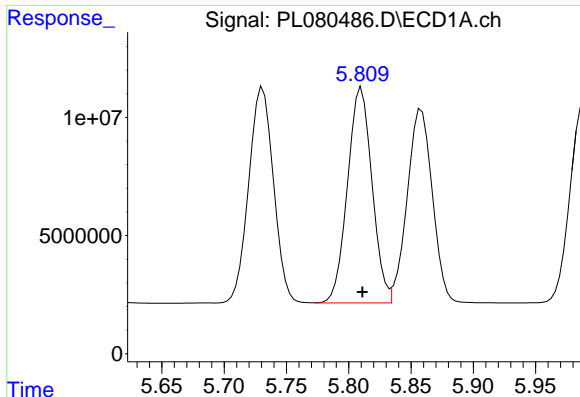
#10 gamma-Chlordane

R.T.: 5.731 min
 Delta R.T.: 0.000 min
 Response: 126848506
 Conc: 50.22 ng/ml



#10 gamma-Chlordane

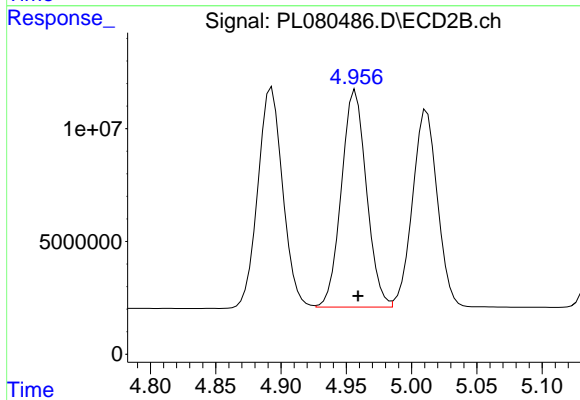
R.T.: 4.893 min
 Delta R.T.: -0.002 min
 Response: 127887418
 Conc: 45.12 ng/ml



#11 alpha-Chlordane

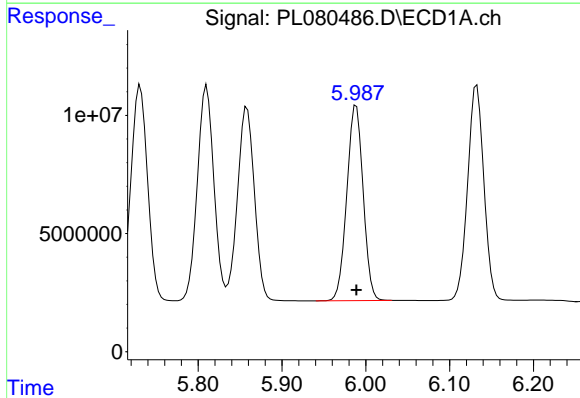
R.T.: 5.810 min
 Delta R.T.: 0.000 min
 Response: 125333577
 Conc: 49.65 ng/ml

Instrument :
 ECD_L
 ClientSampleId :
 PB150424BS



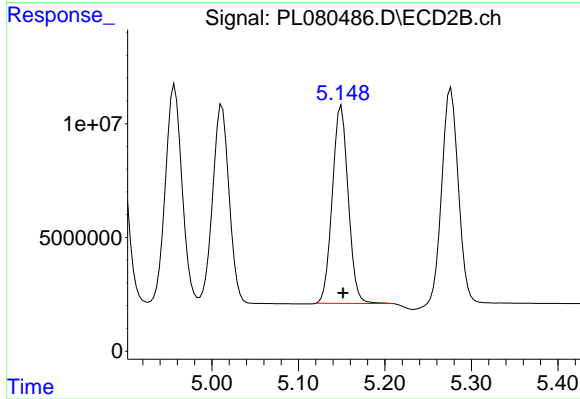
#11 alpha-Chlordane

R.T.: 4.957 min
 Delta R.T.: -0.002 min
 Response: 128526816
 Conc: 44.87 ng/ml



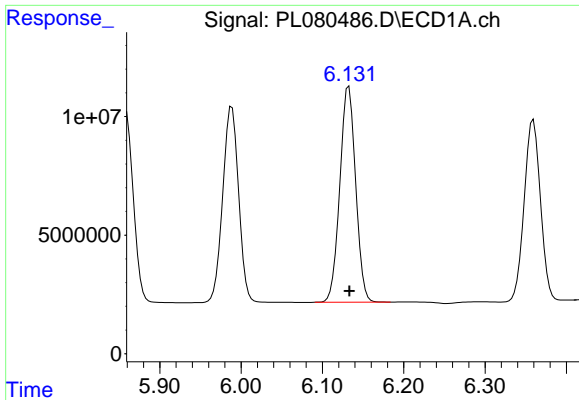
#12 4,4'-DDE

R.T.: 5.989 min
 Delta R.T.: 0.000 min
 Response: 112026897
 Conc: 50.30 ng/ml



#12 4,4'-DDE

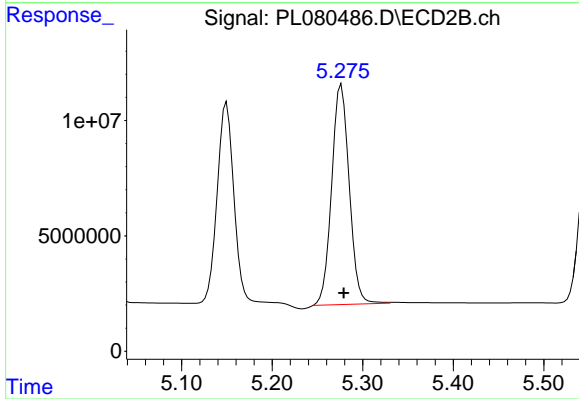
R.T.: 5.150 min
 Delta R.T.: -0.002 min
 Response: 110677032
 Conc: 46.92 ng/ml



#13 Dieldrin

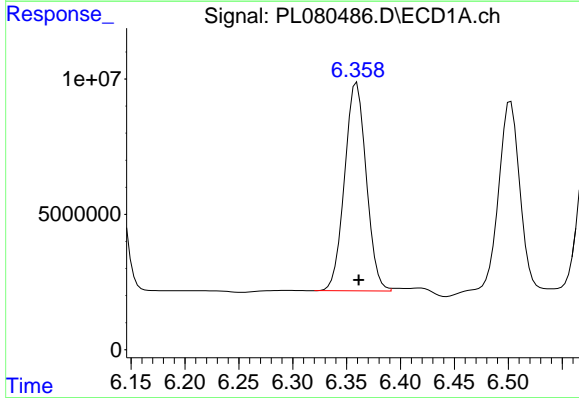
R.T.: 6.133 min
 Delta R.T.: 0.000 min
 Response: 122708343
 Conc: 51.27 ng/ml

Instrument :
 ECD_L
 ClientSampleId :
 PB150424BS



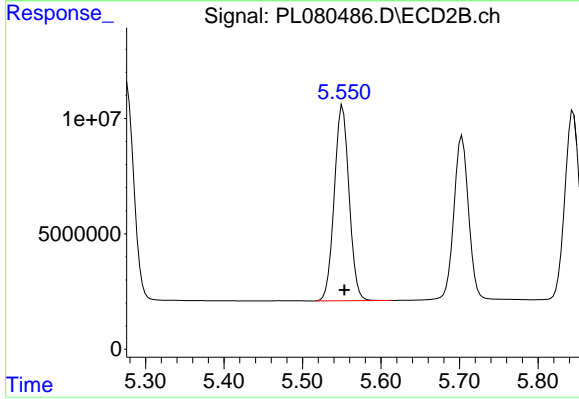
#13 Dieldrin

R.T.: 5.276 min
 Delta R.T.: -0.003 min
 Response: 128531612
 Conc: 47.52 ng/ml



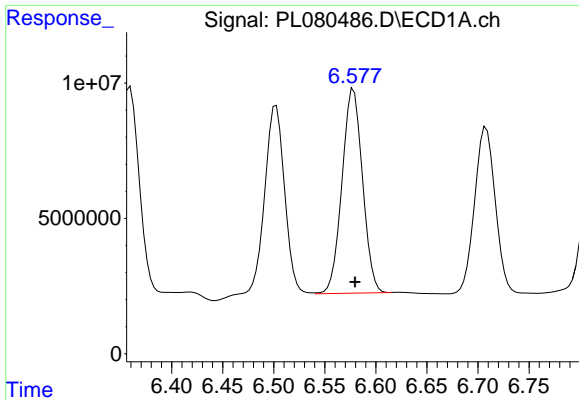
#14 Endrin

R.T.: 6.358 min
 Delta R.T.: -0.003 min
 Response: 107444149
 Conc: 49.68 ng/ml m



#14 Endrin

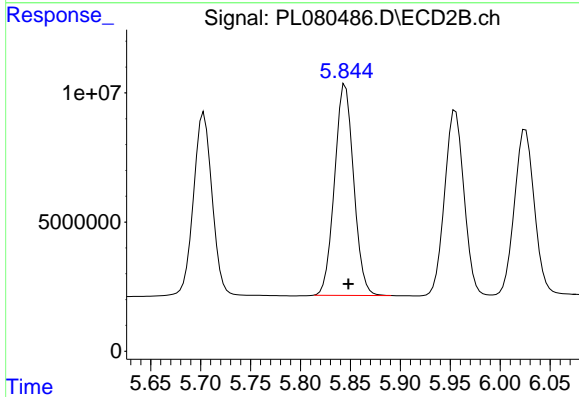
R.T.: 5.551 min
 Delta R.T.: -0.003 min
 Response: 111161103
 Conc: 47.89 ng/ml



#15 Endosulfan II

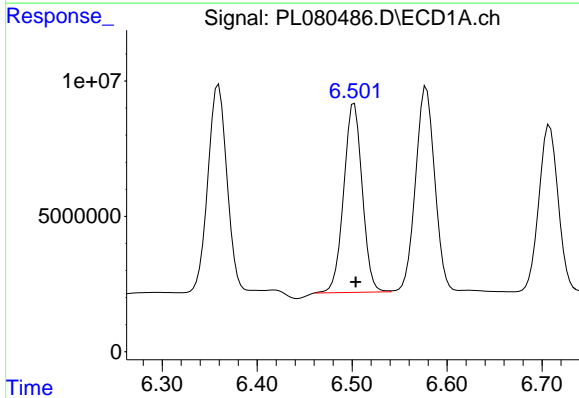
R.T.: 6.578 min
 Delta R.T.: -0.001 min
 Response: 105480269
 Conc: 46.01 ng/ml

Instrument :
 ECD_L
 ClientSampleId :
 PB150424BS



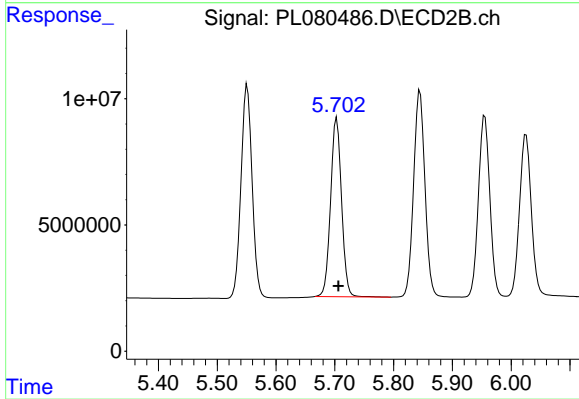
#15 Endosulfan II

R.T.: 5.845 min
 Delta R.T.: -0.003 min
 Response: 108850661
 Conc: 52.24 ng/ml



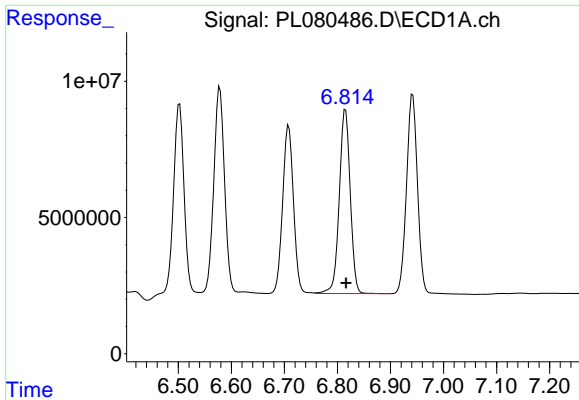
#16 4,4'-DDD

R.T.: 6.502 min
 Delta R.T.: -0.002 min
 Response: 94719609
 Conc: 51.70 ng/ml



#16 4,4'-DDD

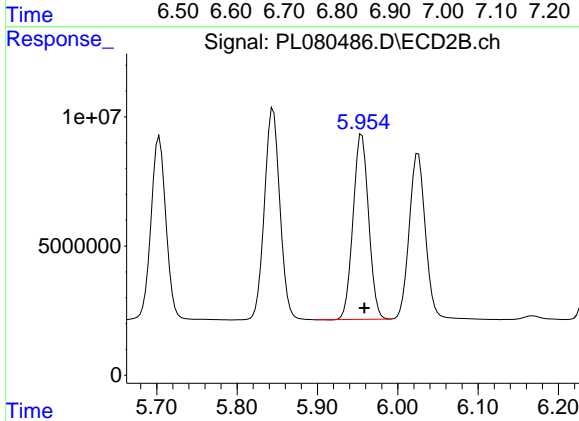
R.T.: 5.703 min
 Delta R.T.: -0.003 min
 Response: 91601110
 Conc: 48.74 ng/ml



#17 4,4'-DDT

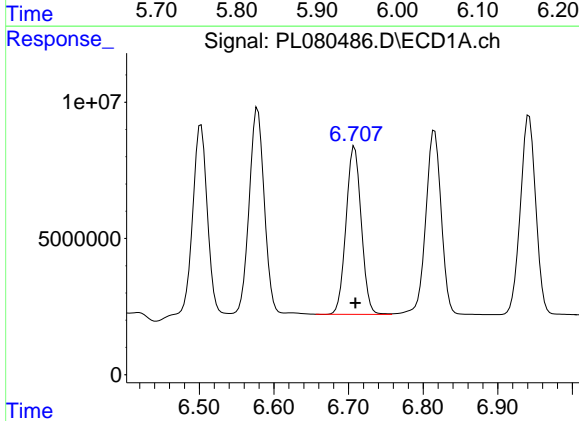
R.T.: 6.815 min
 Delta R.T.: 0.000 min
 Response: 96997541
 Conc: 46.69 ng/ml

Instrument :
 ECD_L
 ClientSampleId :
 PB150424BS



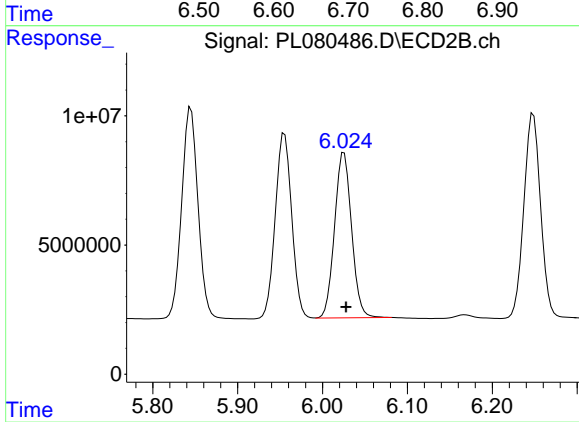
#17 4,4'-DDT

R.T.: 5.955 min
 Delta R.T.: -0.003 min
 Response: 96292948
 Conc: 45.82 ng/ml



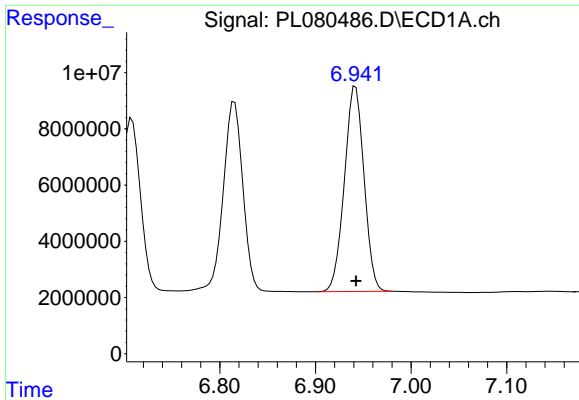
#18 Endrin aldehyde

R.T.: 6.708 min
 Delta R.T.: -0.001 min
 Response: 87135581
 Conc: 52.38 ng/ml



#18 Endrin aldehyde

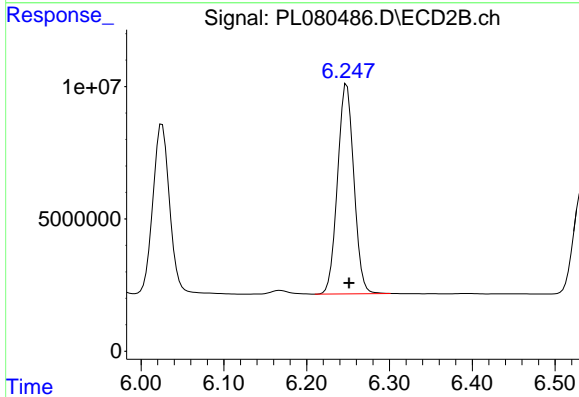
R.T.: 6.025 min
 Delta R.T.: -0.002 min
 Response: 89022820
 Conc: 48.75 ng/ml



#19 Endosulfan Sulfate

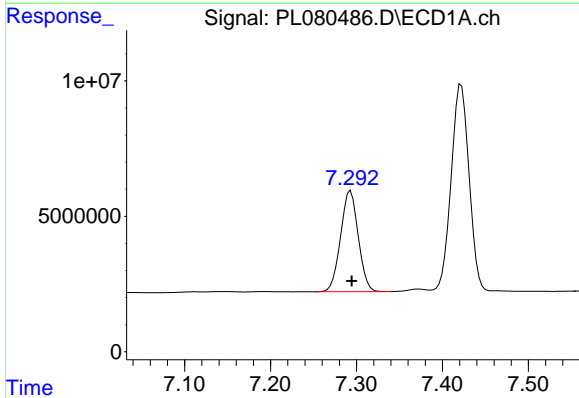
R.T.: 6.942 min
 Delta R.T.: 0.000 min
 Response: 104477789
 Conc: 50.47 ng/ml

Instrument :
 ECD_L
 ClientSampleId :
 PB150424BS



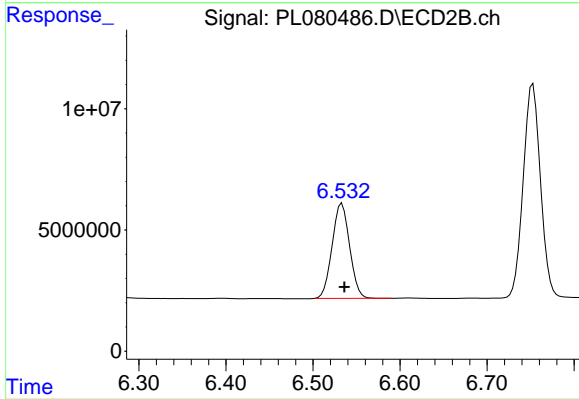
#19 Endosulfan Sulfate

R.T.: 6.248 min
 Delta R.T.: -0.003 min
 Response: 108643582
 Conc: 46.71 ng/ml



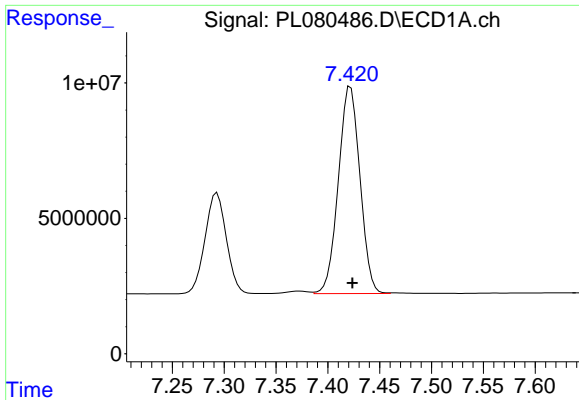
#20 Methoxychlor

R.T.: 7.293 min
 Delta R.T.: -0.001 min
 Response: 53367677
 Conc: 48.37 ng/ml



#20 Methoxychlor

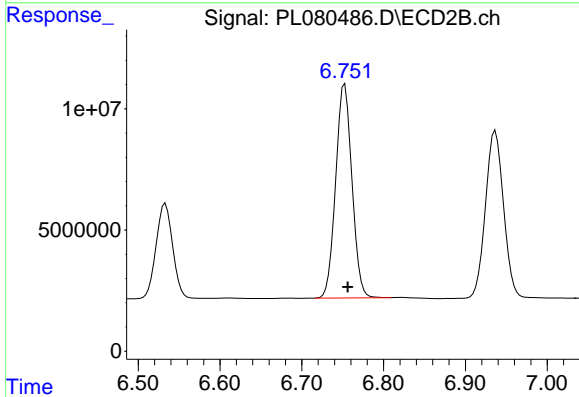
R.T.: 6.533 min
 Delta R.T.: -0.003 min
 Response: 54838591
 Conc: 45.19 ng/ml



#21 Endrin ketone

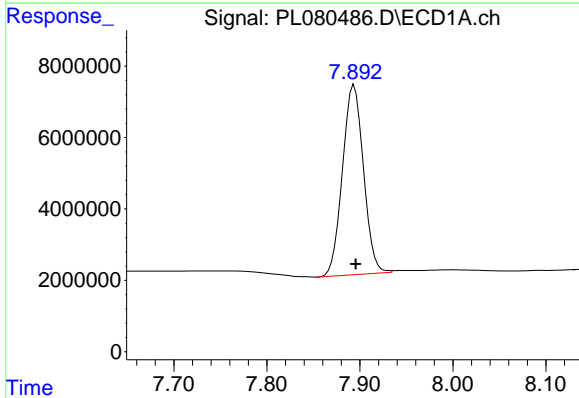
R.T.: 7.422 min
 Delta R.T.: -0.002 min
 Response: 110907444
 Conc: 50.27 ng/ml

Instrument :
 ECD_L
 ClientSampleId :
 PB150424BS



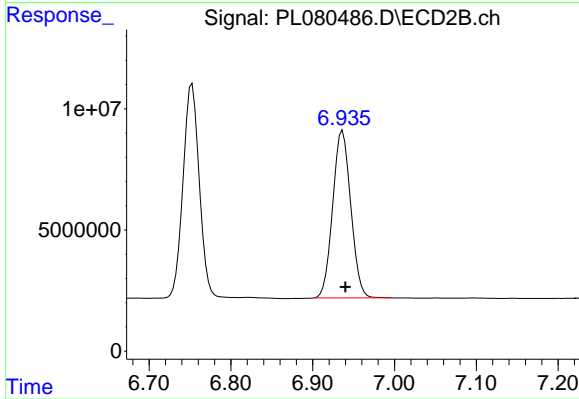
#21 Endrin ketone

R.T.: 6.753 min
 Delta R.T.: -0.003 min
 Response: 121616073
 Conc: 47.63 ng/ml



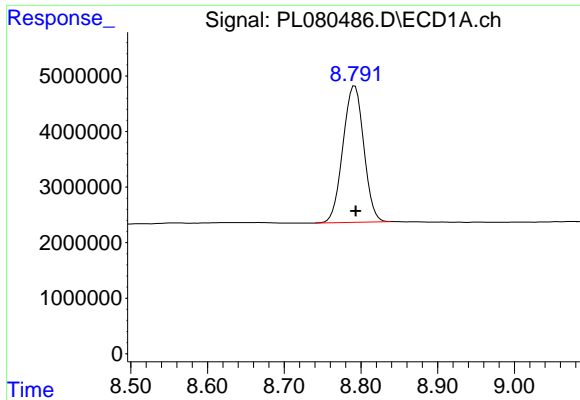
#22 Mirex

R.T.: 7.894 min
 Delta R.T.: -0.002 min
 Response: 83358468
 Conc: 48.47 ng/ml



#22 Mirex

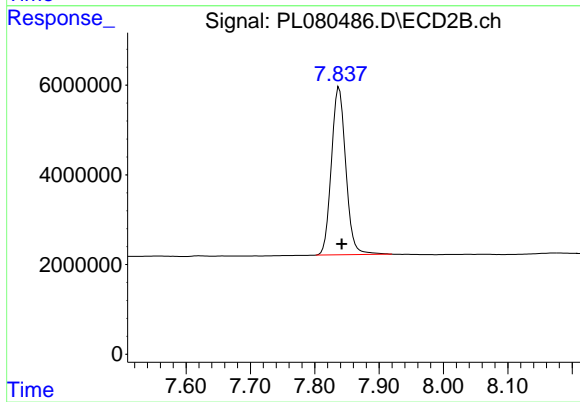
R.T.: 6.937 min
 Delta R.T.: -0.004 min
 Response: 105725416
 Conc: 46.44 ng/ml



#28 Decachlorobiphenyl

R.T.: 8.792 min
Delta R.T.: -0.001 min
Response: 46556501
Conc: 26.59 ng/ml

Instrument :
ECD_L
ClientSampleId :
PB150424BS



#28 Decachlorobiphenyl

R.T.: 7.838 min
Delta R.T.: -0.004 min
Response: 58196551
Conc: 24.43 ng/ml