

Data Path : Z:\pestpcbsrv\HPCHEM1\ECD_L\Data\PL012423\
 Data File : PL080497.D
 Signal(s) : Signal #1: ECD1A.ch Signal #2: ECD2B.ch
 Acq On : 24 Jan 2023 13:57
 Operator : AR\AJ
 Sample : 01260-04
 Misc :
 ALS Vial : 15 Sample Multiplier: 1

Instrument :
 ECD_L
 ClientSampleId :
 TP-22

Integration File signal 1: autoint1.e
 Integration File signal 2: autoint2.e
 Quant Time: Jan 24 20:50:50 2023
 Quant Method : Z:\pestpcbsrv\HPCHEM1\ECD_L\methods\PL012023.M
 Quant Title : GC Extractables
 QLast Update : Sun Jan 22 23:56:48 2023
 Response via : Initial Calibration
 Integrator: ChemStation

Volume Inj. : 1 µl
 Signal #1 Phase : ZB-MR2 Signal #2 Phase: ZB-MR1
 Signal #1 Info : 30M x 0.32mm x0.2 Signal #2 Info : 30M x 0.32mm x0.5µm

Compound	RT#1	RT#2	Resp#1	Resp#2	ng/ml	ng/ml

System Monitoring Compounds						
1) SA Tetrachlo...	3.352	2.689	42549549	42904800	19.838	19.534
28) SA Decachlor...	8.788	7.837	33446807	42846852	19.104	17.984

Target Compounds

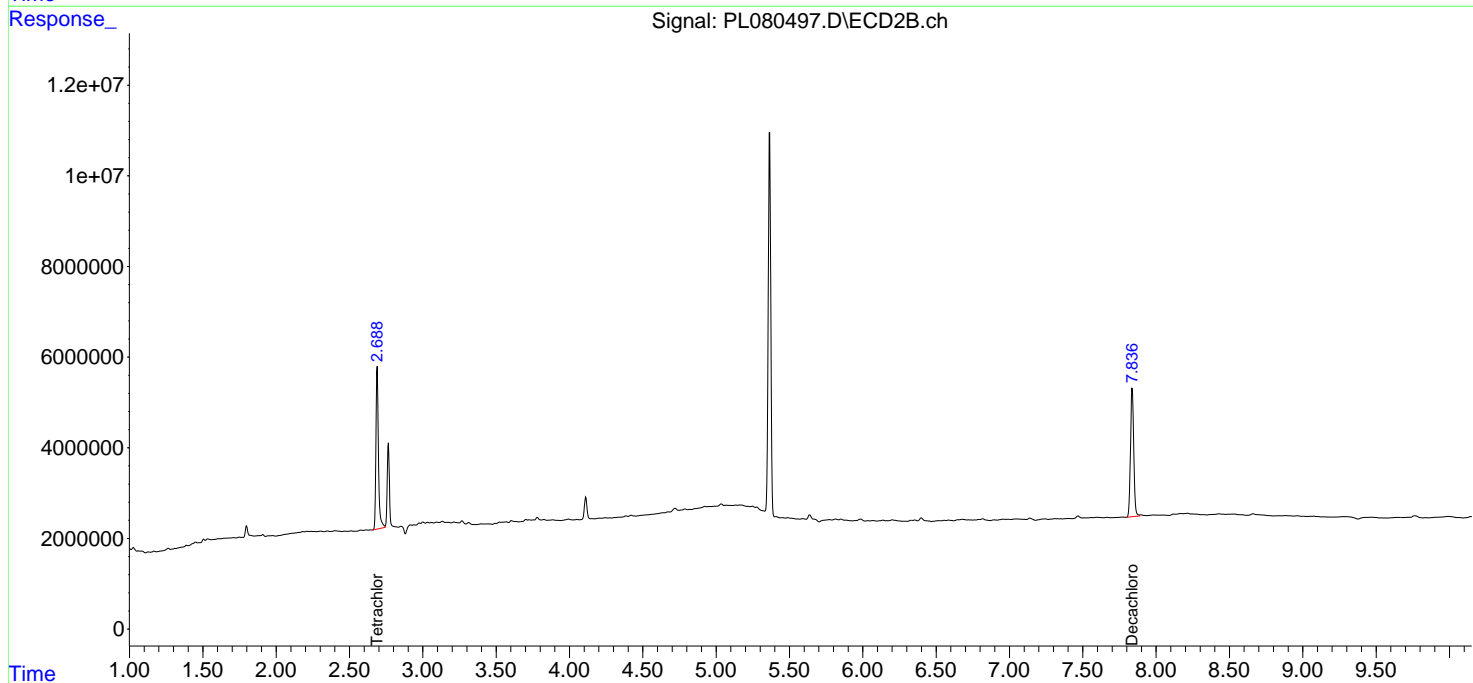
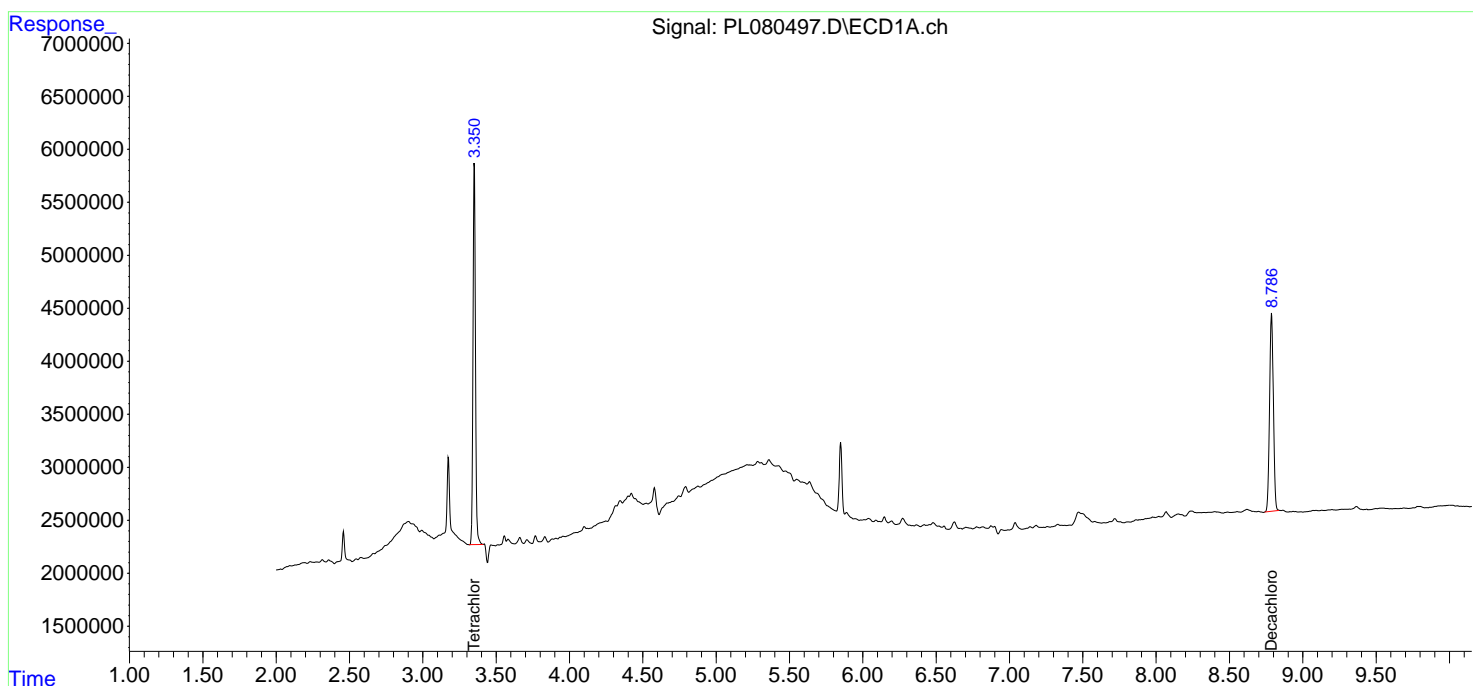
(f)=RT Delta > 1/2 Window (#)=Amounts differ by > 25% (m)=manual int.

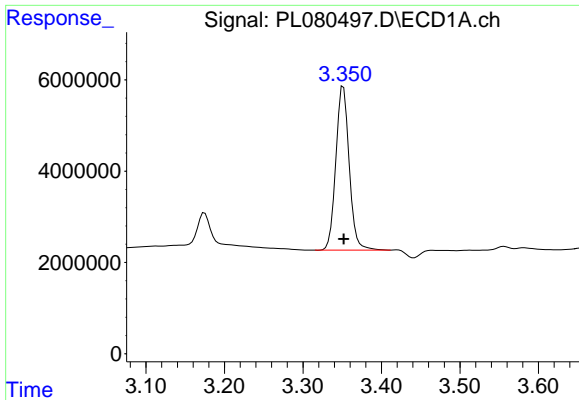
Data Path : Z:\pestpcbsrv\HPCHEM1\ECD_L\Data\PL012423\
 Data File : PL080497.D
 Signal(s) : Signal #1: ECD1A.ch Signal #2: ECD2B.ch
 Acq On : 24 Jan 2023 13:57
 Operator : AR\AJ
 Sample : 01260-04
 Misc :
 ALS Vial : 15 Sample Multiplier: 1

Instrument :
 ECD_L
 ClientSampleId :
 TP-22

Integration File signal 1: autoint1.e
 Integration File signal 2: autoint2.e
 Quant Time: Jan 24 20:50:50 2023
 Quant Method : Z:\pestpcbsrv\HPCHEM1\ECD_L\methods\PL012023.M
 Quant Title : GC Extractables
 QLast Update : Sun Jan 22 23:56:48 2023
 Response via : Initial Calibration
 Integrator: ChemStation

Volume Inj. : 1 µl
 Signal #1 Phase : ZB-MR2 Signal #2 Phase: ZB-MR1
 Signal #1 Info : 30M x 0.32mm x0.2 Signal #2 Info : 30M x 0.32mm x0.5µm

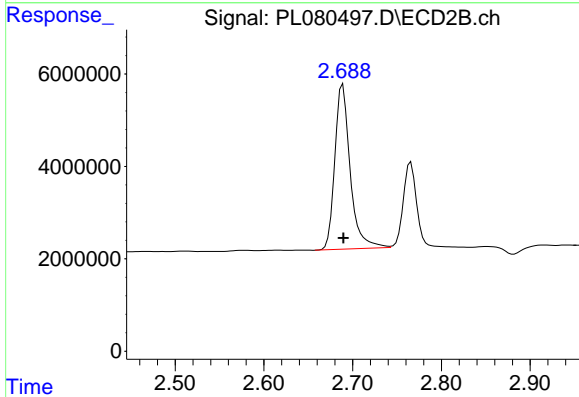




#1 Tetrachloro-m-xylene

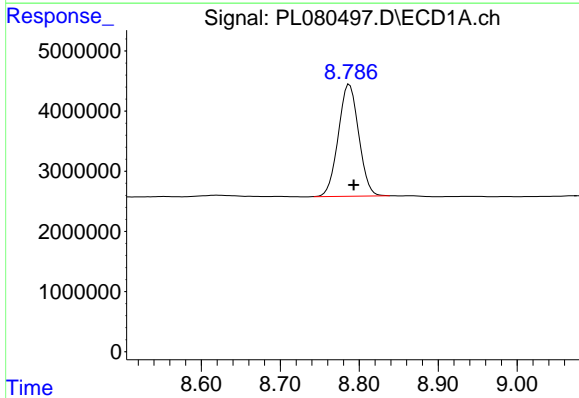
R.T.: 3.352 min
Delta R.T.: 0.000 min
Response: 42549549
Conc: 19.84 ng/ml

Instrument :
ECD_L
ClientSampleId :
TP-22



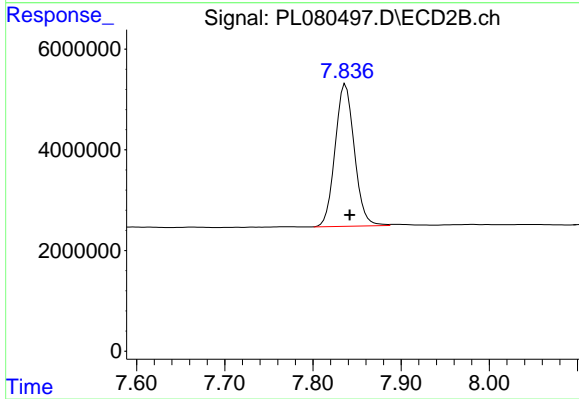
#1 Tetrachloro-m-xylene

R.T.: 2.689 min
Delta R.T.: 0.000 min
Response: 42904800
Conc: 19.53 ng/ml



#28 Decachlorobiphenyl

R.T.: 8.788 min
Delta R.T.: -0.005 min
Response: 33446807
Conc: 19.10 ng/ml



#28 Decachlorobiphenyl

R.T.: 7.837 min
Delta R.T.: -0.005 min
Response: 42846852
Conc: 17.98 ng/ml