

Data Path : Z:\pestpcbsrv\HPCHEM1\ECD_L\Data\PL012423\
 Data File : PL080498.D
 Signal(s) : Signal #1: ECD1A.ch Signal #2: ECD2B.ch
 Acq On : 24 Jan 2023 14:11
 Operator : AR\AJ
 Sample : 01260-04MS
 Misc :
 ALS Vial : 16 Sample Multiplier: 1

Instrument :
 ECD_L
 ClientSampleId :
 TP-22MS

Integration File signal 1: autoint1.e
 Integration File signal 2: autoint2.e
 Quant Time: Jan 24 20:51:51 2023
 Quant Method : Z:\pestpcbsrv\HPCHEM1\ECD_L\methods\PL012023.M
 Quant Title : GC Extractables
 QLast Update : Sun Jan 22 23:56:48 2023
 Response via : Initial Calibration
 Integrator: ChemStation

Volume Inj. : 1 µl
 Signal #1 Phase : ZB-MR2 Signal #2 Phase: ZB-MR1
 Signal #1 Info : 30M x 0.32mm x0.2 Signal #2 Info : 30M x 0.32mm x0.5µm

Compound	RT#1	RT#2	Resp#1	Resp#2	ng/ml	ng/ml
System Monitoring Compounds						
1) SA Tetrachlo...	3.351	2.689	38528259	38550550	17.963	17.551
28) SA Decachlor...	8.789	7.837	31527381	40402360	18.008	16.958
Target Compounds						
2) A alpha-BHC	3.800	3.190	129.4E6	125.2E6	40.858	39.363
3) MA gamma-BHC...	4.128	3.519	121.6E6	118.4E6	41.365	39.647
4) MA Heptachlor	4.711	3.860	119.8E6	121.2E6	40.532	38.088
5) MB Aldrin	5.048	4.139	113.7E6	123.7E6	41.546m	41.945
6) B beta-BHC	4.324	3.815	53947794	51587259	39.522	38.653
7) B delta-BHC	4.567	4.044	123.6E6	114.8E6	42.698	39.788
8) B Heptachlo...	5.474	4.641	106.4E6	107.8E6	41.122	38.730
9) A Endosulfan I	5.856	5.011	103.1E6	99056514	43.663	38.079
10) B gamma-Chl...	5.729	4.892	103.4E6	107.1E6	40.934	37.783
11) B alpha-Chl...	5.808	4.956	102.4E6	108.5E6	40.586	37.871
12) B 4,4'-DDE	5.986	5.149	90564174	92438403	40.660	39.188
13) MA Dieldrin	6.130	5.275	101.6E6	106.2E6	42.436	39.263
14) MA Endrin	6.357	5.550	90488567	97385599	41.841	41.956
15) B Endosulfa...	6.576	5.844	85193451	93219124	37.165	44.737
16) A 4,4'-DDD	6.500	5.703	74989466	73710948	40.933	39.225
17) MA 4,4'-DDT	6.813	5.954	78614092	80936768	37.838	38.514
18) B Endrin al...	6.706	6.024	72931282	76917193	43.845	42.121
19) B Endosulfa...	6.939	6.247	85308299	91979666	41.213	39.550
20) A Methoxychlor	7.291	6.532	44768810	47254783	40.578	38.942
21) B Endrin ke...	7.419	6.752	91416330	101.9E6	41.433	39.923
22) Mirex	7.891	6.936	73893093	91173396	42.966	40.046

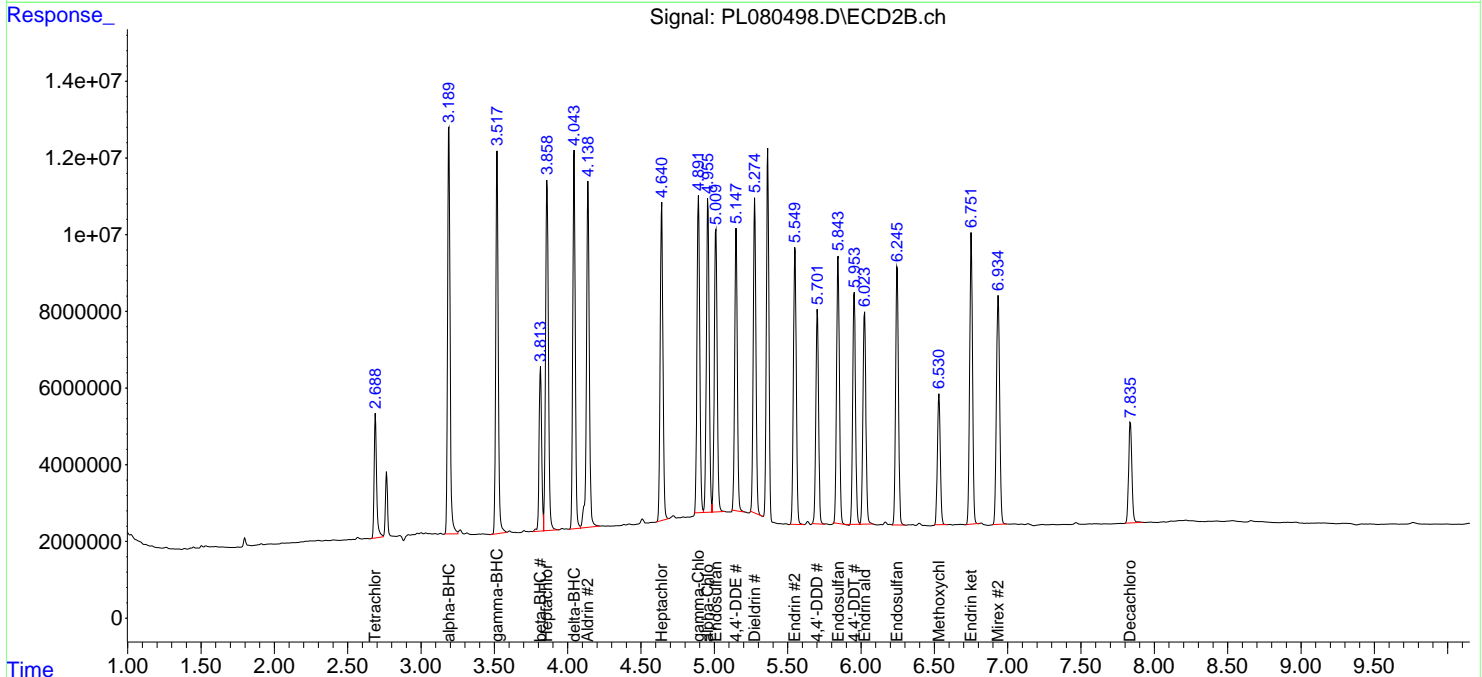
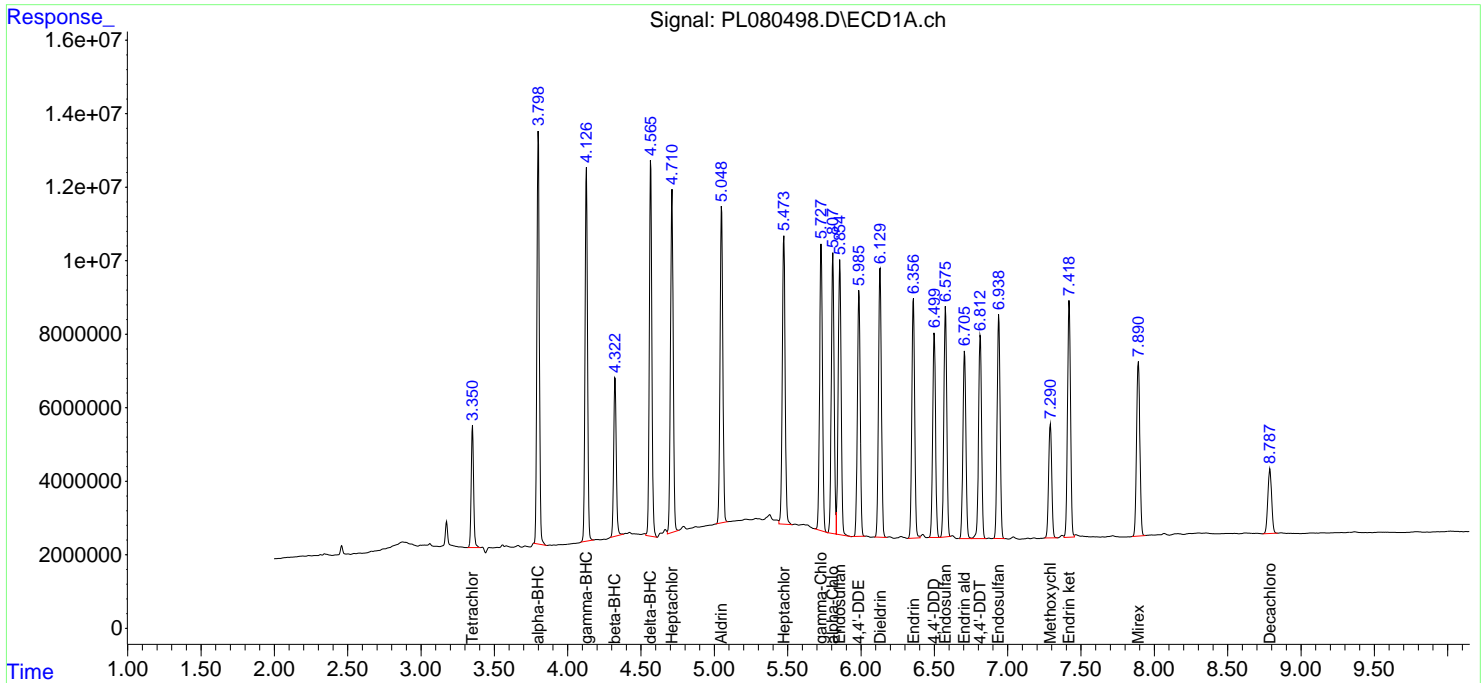
(f)=RT Delta > 1/2 Window (#)=Amounts differ by > 25% (m)=manual int.

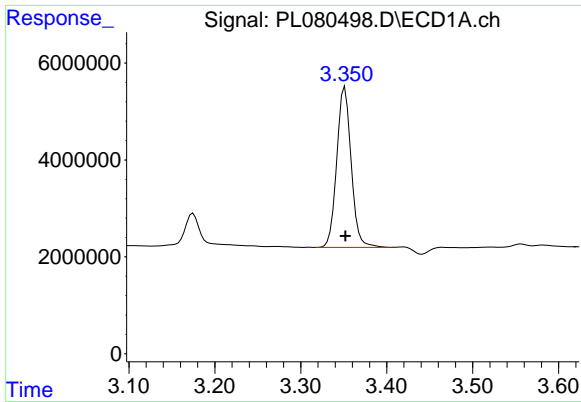
Data Path : Z:\pestpcbsrv\HPCHEM1\ECD_L\Data\PL012423\
 Data File : PL080498.D
 Signal(s) : Signal #1: ECD1A.ch Signal #2: ECD2B.ch
 Acq On : 24 Jan 2023 14:11
 Operator : AR\AJ
 Sample : 01260-04MS
 Misc :
 ALS Vial : 16 Sample Multiplier: 1

Instrument :
 ECD_L
 ClientSampleId :
 TP-22MS

Integration File signal 1: autoint1.e
 Integration File signal 2: autoint2.e
 Quant Time: Jan 24 20:51:51 2023
 Quant Method : Z:\pestpcbsrv\HPCHEM1\ECD_L\methods\PL012023.M
 Quant Title : GC Extractables
 QLast Update : Sun Jan 22 23:56:48 2023
 Response via : Initial Calibration
 Integrator: ChemStation

Volume Inj. : 1 µl
 Signal #1 Phase : ZB-MR2 Signal #2 Phase: ZB-MR1
 Signal #1 Info : 30M x 0.32mm x0.2 Signal #2 Info : 30M x 0.32mm x0.5µm

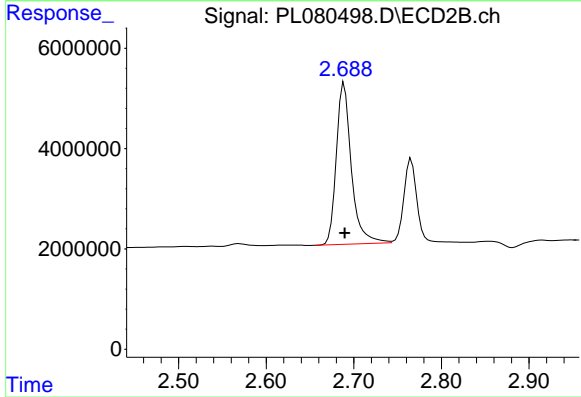




#1 Tetrachloro-m-xylene

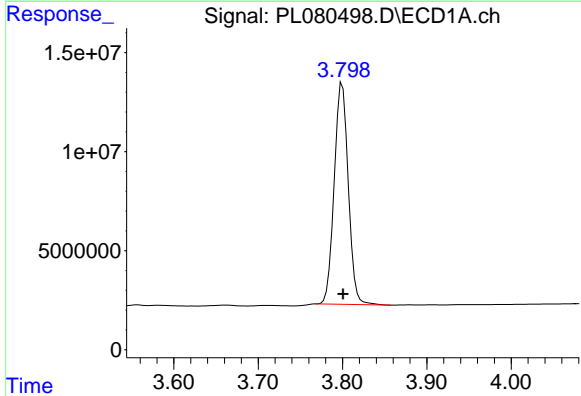
R.T.: 3.351 min
 Delta R.T.: 0.000 min
 Response: 38528259
 Conc: 17.96 ng/ml

Instrument :
 ECD_L
 ClientSampleId :
 TP-22MS



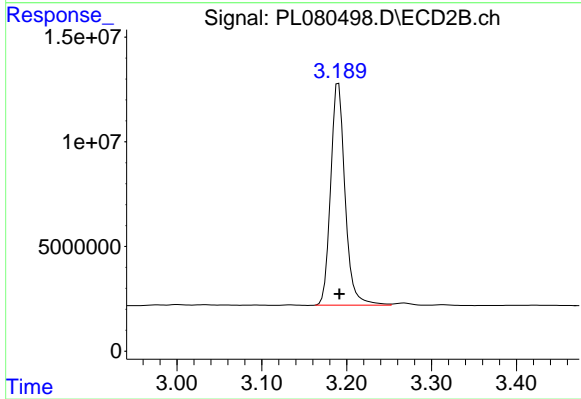
#1 Tetrachloro-m-xylene

R.T.: 2.689 min
 Delta R.T.: 0.000 min
 Response: 38550550
 Conc: 17.55 ng/ml



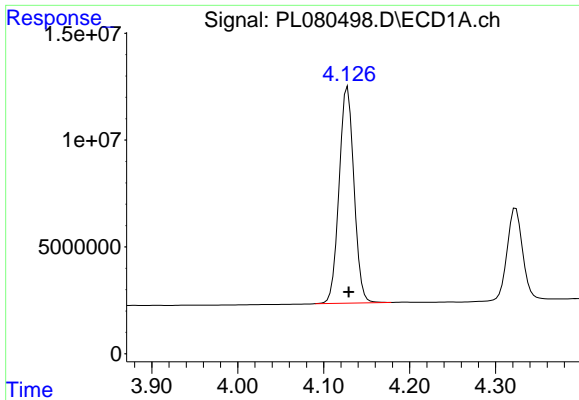
#2 alpha-BHC

R.T.: 3.800 min
 Delta R.T.: 0.000 min
 Response: 129438612
 Conc: 40.86 ng/ml



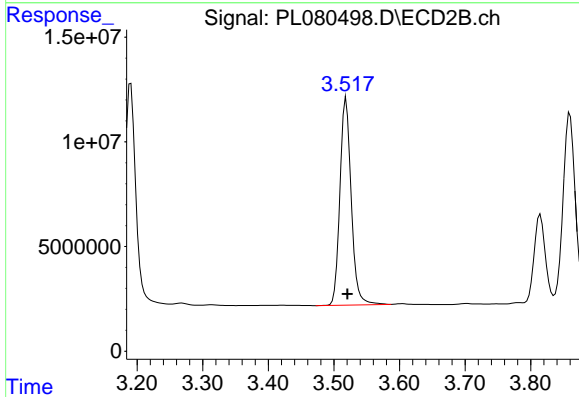
#2 alpha-BHC

R.T.: 3.190 min
 Delta R.T.: -0.001 min
 Response: 125190418
 Conc: 39.36 ng/ml

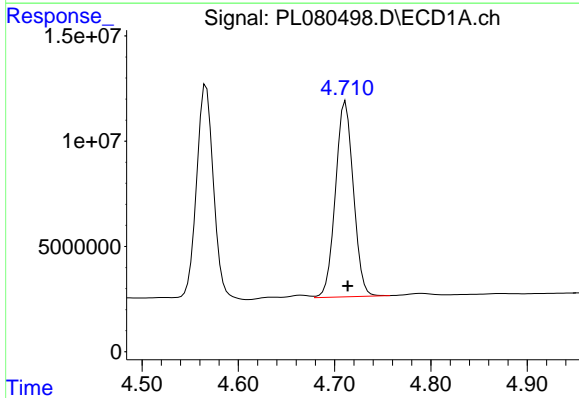


#3 gamma-BHC (Lindane)
R.T.: 4.128 min
Delta R.T.: -0.002 min
Response: 121602448
Conc: 41.36 ng/ml

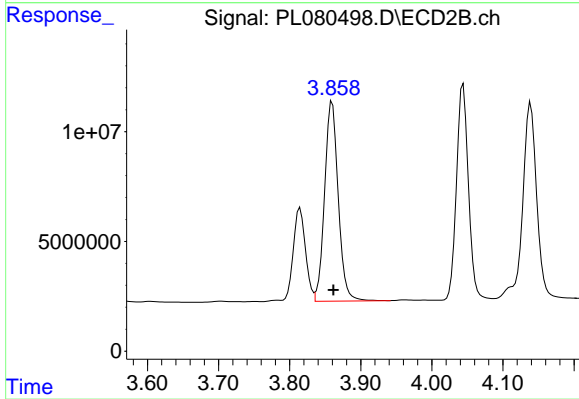
Instrument :
ECD_L
ClientSampleId :
TP-22MS



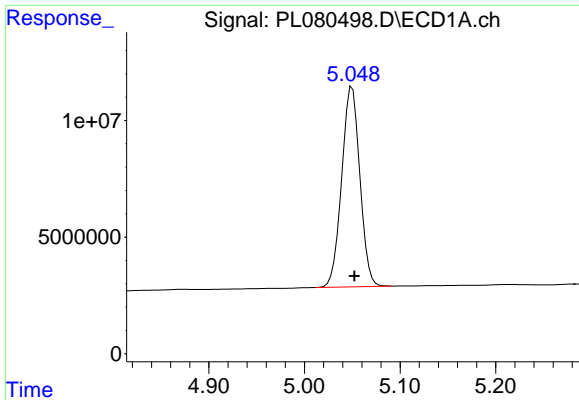
#3 gamma-BHC (Lindane)
R.T.: 3.519 min
Delta R.T.: -0.002 min
Response: 118437855
Conc: 39.65 ng/ml



#4 Heptachlor
R.T.: 4.711 min
Delta R.T.: -0.002 min
Response: 119780637
Conc: 40.53 ng/ml



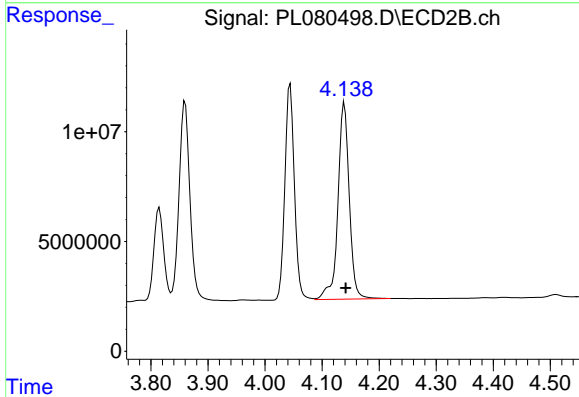
#4 Heptachlor
R.T.: 3.860 min
Delta R.T.: -0.002 min
Response: 121209206
Conc: 38.09 ng/ml



#5 Aldrin

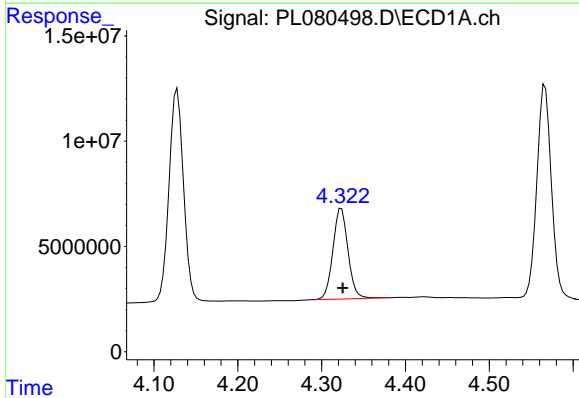
R.T.: 5.048 min
 Delta R.T.: -0.004 min
 Response: 113659587
 Conc: 41.55 ng/ml

Instrument :
 ECD_L
 ClientSampleId :
 TP-22MS



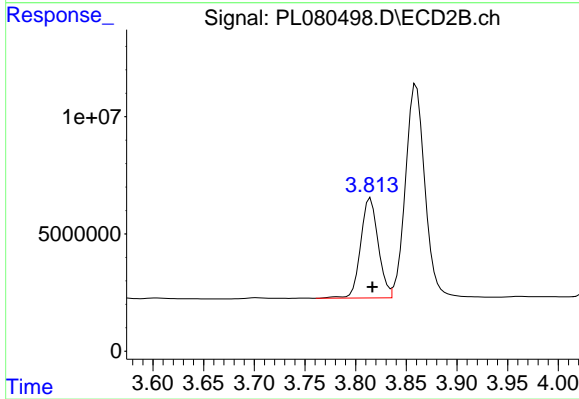
#5 Aldrin

R.T.: 4.139 min
 Delta R.T.: -0.002 min
 Response: 123720791
 Conc: 41.95 ng/ml



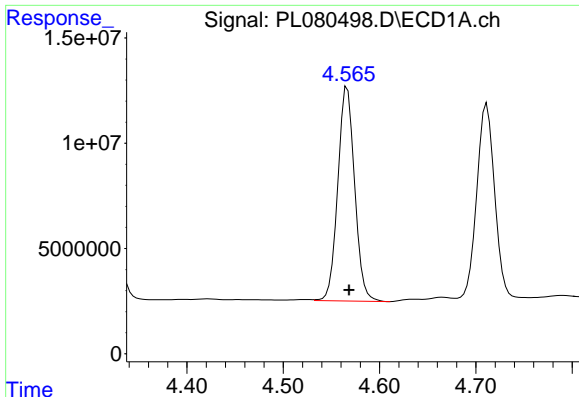
#6 beta-BHC

R.T.: 4.324 min
 Delta R.T.: -0.002 min
 Response: 53947794
 Conc: 39.52 ng/ml



#6 beta-BHC

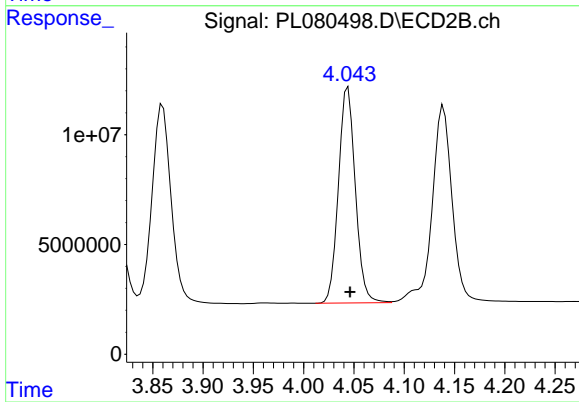
R.T.: 3.815 min
 Delta R.T.: -0.002 min
 Response: 51587259
 Conc: 38.65 ng/ml



#7 delta-BHC

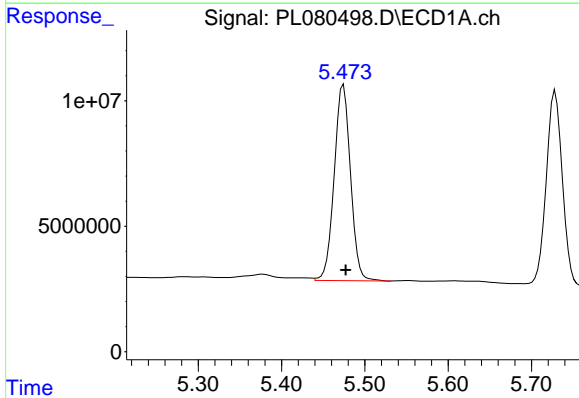
R.T.: 4.567 min
 Delta R.T.: -0.002 min
 Response: 123610733
 Conc: 42.70 ng/ml

Instrument :
 ECD_L
 ClientSampleId :
 TP-22MS



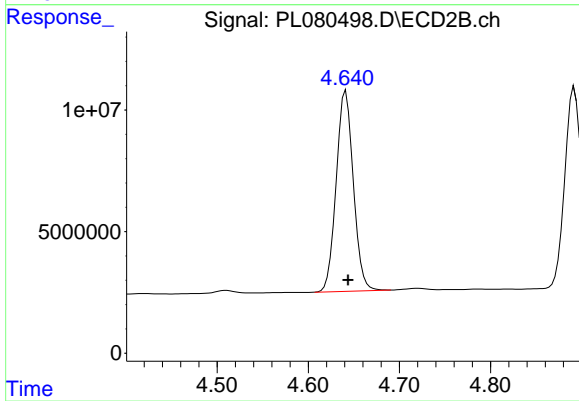
#7 delta-BHC

R.T.: 4.044 min
 Delta R.T.: -0.002 min
 Response: 114765790
 Conc: 39.79 ng/ml



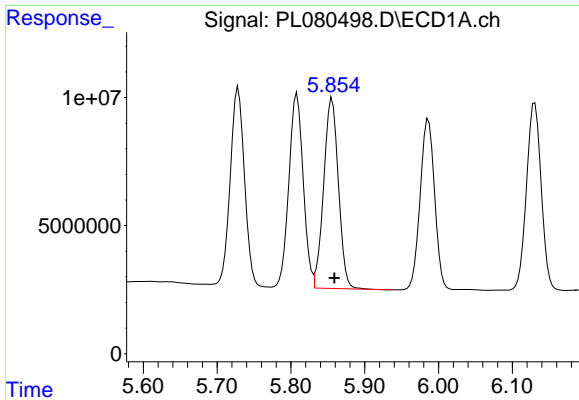
#8 Heptachlor epoxide

R.T.: 5.474 min
 Delta R.T.: -0.003 min
 Response: 106385377
 Conc: 41.12 ng/ml



#8 Heptachlor epoxide

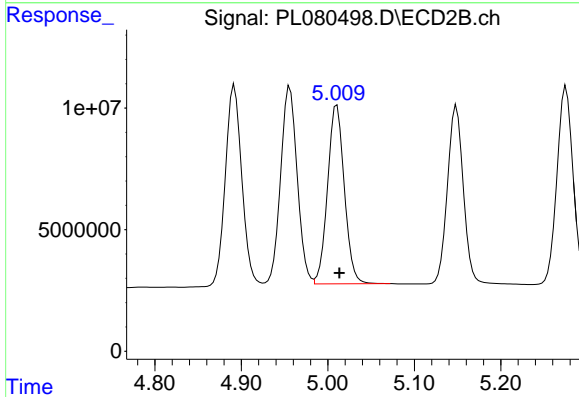
R.T.: 4.641 min
 Delta R.T.: -0.003 min
 Response: 107759491
 Conc: 38.73 ng/ml



#9 Endosulfan I

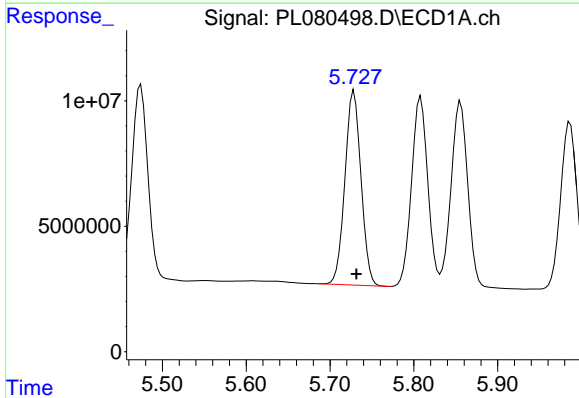
R.T.: 5.856 min
 Delta R.T.: -0.003 min
 Response: 103108622
 Conc: 43.66 ng/ml

Instrument :
 ECD_L
 ClientSampleId :
 TP-22MS



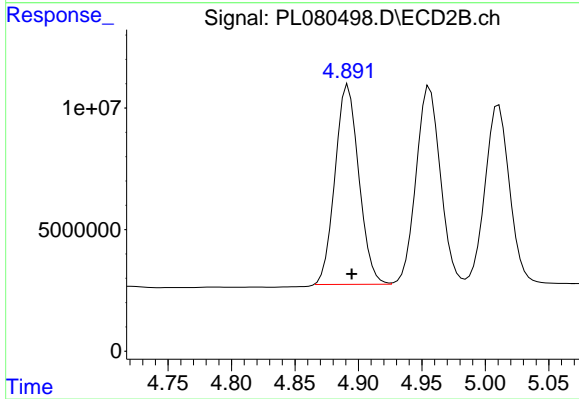
#9 Endosulfan I

R.T.: 5.011 min
 Delta R.T.: -0.003 min
 Response: 99056514
 Conc: 38.08 ng/ml



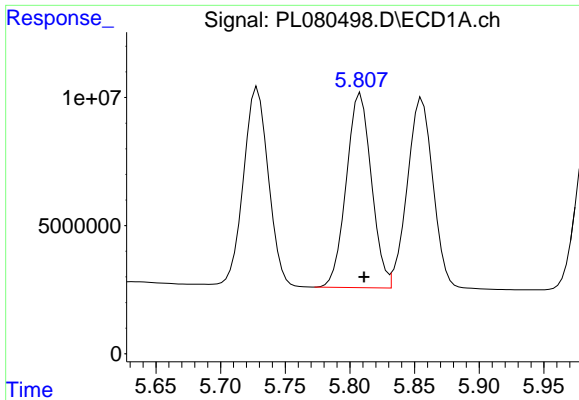
#10 gamma-Chlordane

R.T.: 5.729 min
 Delta R.T.: -0.003 min
 Response: 103388271
 Conc: 40.93 ng/ml



#10 gamma-Chlordane

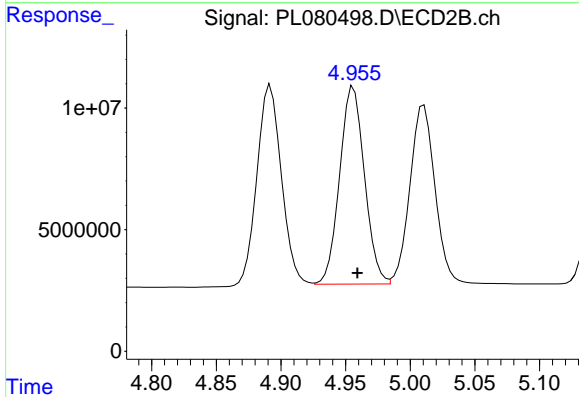
R.T.: 4.892 min
 Delta R.T.: -0.003 min
 Response: 107084914
 Conc: 37.78 ng/ml



#11 alpha-Chlordane

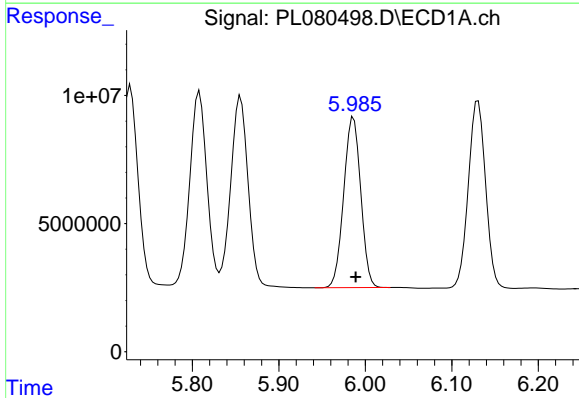
R.T.: 5.808 min
 Delta R.T.: -0.003 min
 Response: 102449062
 Conc: 40.59 ng/ml

Instrument :
 ECD_L
 ClientSampleId :
 TP-22MS



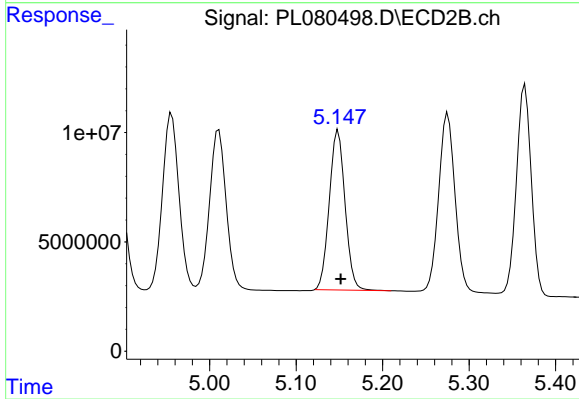
#11 alpha-Chlordane

R.T.: 4.956 min
 Delta R.T.: -0.003 min
 Response: 108488492
 Conc: 37.87 ng/ml



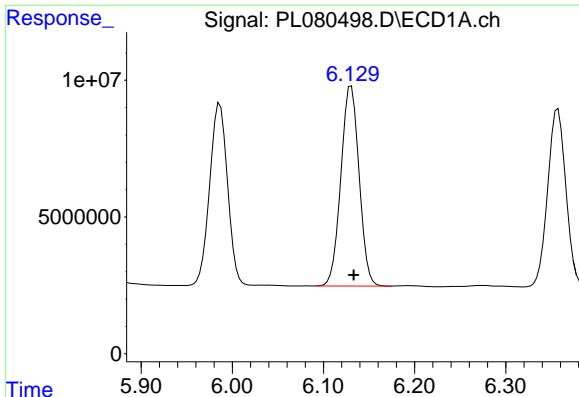
#12 4,4'-DDE

R.T.: 5.986 min
 Delta R.T.: -0.003 min
 Response: 90564174
 Conc: 40.66 ng/ml



#12 4,4'-DDE

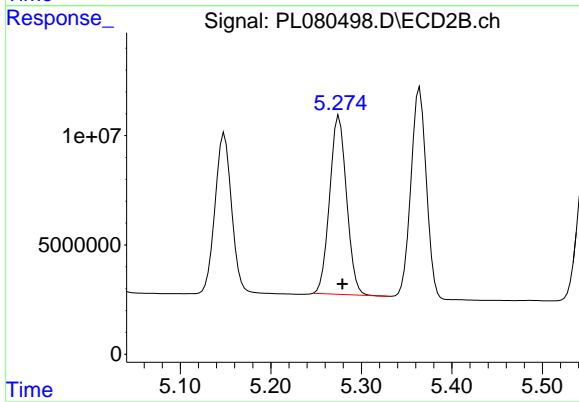
R.T.: 5.149 min
 Delta R.T.: -0.003 min
 Response: 92438403
 Conc: 39.19 ng/ml



#13 Dieldrin

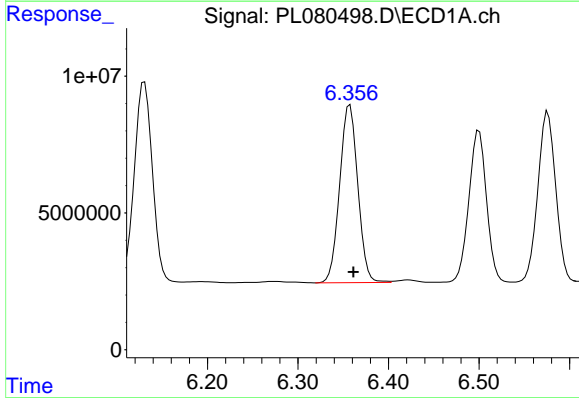
R.T.: 6.130 min
Delta R.T.: -0.003 min
Response: 101563550
Conc: 42.44 ng/ml

Instrument :
ECD_L
ClientSampleId :
TP-22MS



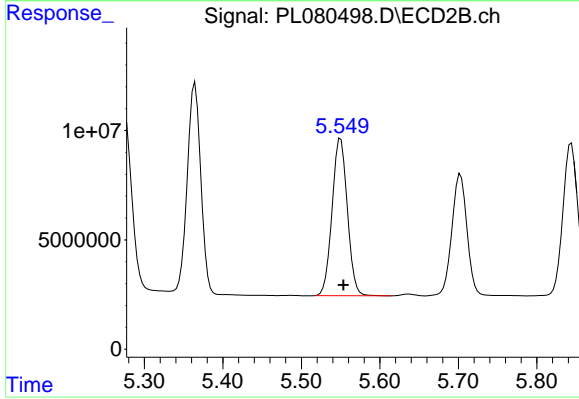
#13 Dieldrin

R.T.: 5.275 min
Delta R.T.: -0.004 min
Response: 106205514
Conc: 39.26 ng/ml



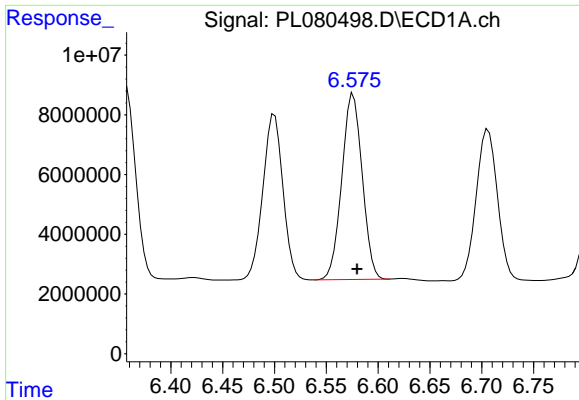
#14 Endrin

R.T.: 6.357 min
Delta R.T.: -0.004 min
Response: 90488567
Conc: 41.84 ng/ml



#14 Endrin

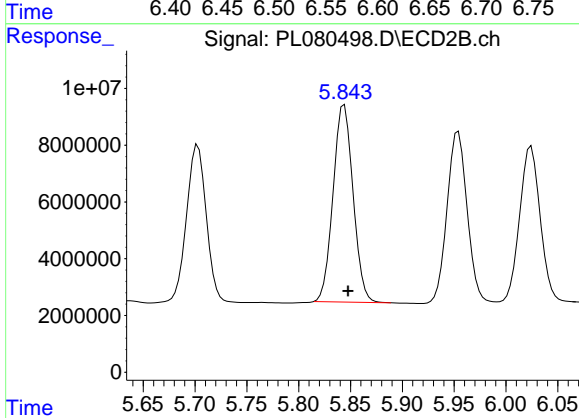
R.T.: 5.550 min
Delta R.T.: -0.004 min
Response: 97385599
Conc: 41.96 ng/ml



#15 Endosulfan II

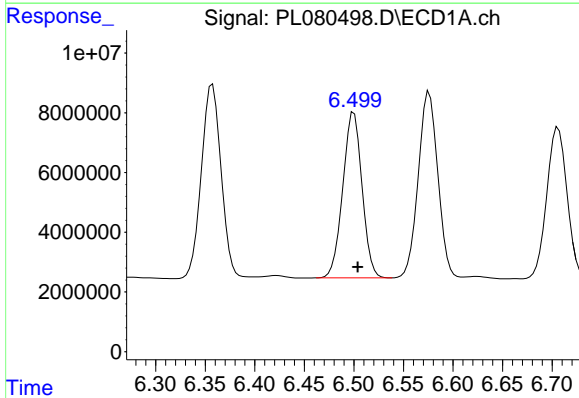
R.T.: 6.576 min
 Delta R.T.: -0.004 min
 Response: 85193451
 Conc: 37.16 ng/ml

Instrument :
 ECD_L
 ClientSampleId :
 TP-22MS



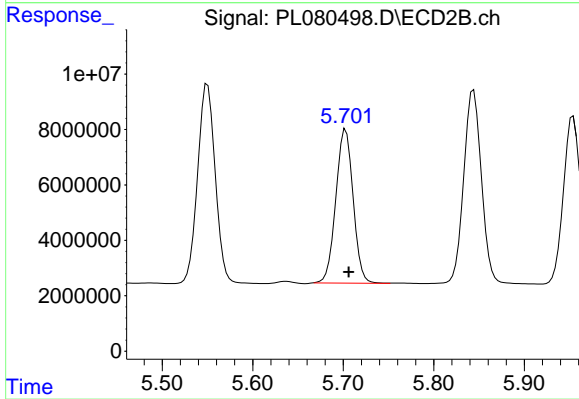
#15 Endosulfan II

R.T.: 5.844 min
 Delta R.T.: -0.004 min
 Response: 93219124
 Conc: 44.74 ng/ml



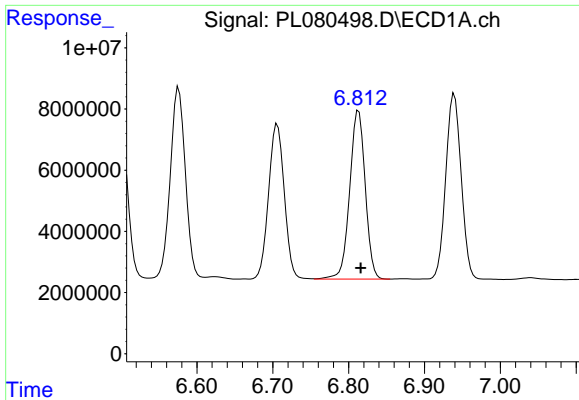
#16 4,4'-DDD

R.T.: 6.500 min
 Delta R.T.: -0.004 min
 Response: 74989466
 Conc: 40.93 ng/ml



#16 4,4'-DDD

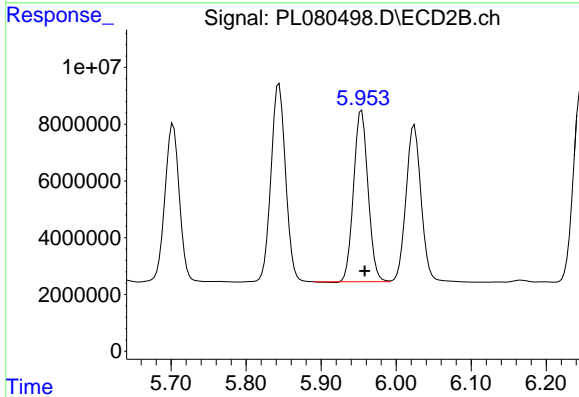
R.T.: 5.703 min
 Delta R.T.: -0.004 min
 Response: 73710948
 Conc: 39.22 ng/ml



#17 4,4'-DDT

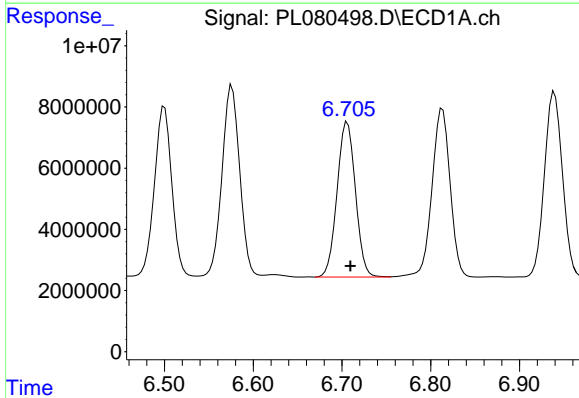
R.T.: 6.813 min
 Delta R.T.: -0.003 min
 Response: 78614092
 Conc: 37.84 ng/ml

Instrument :
 ECD_L
 ClientSampleId :
 TP-22MS



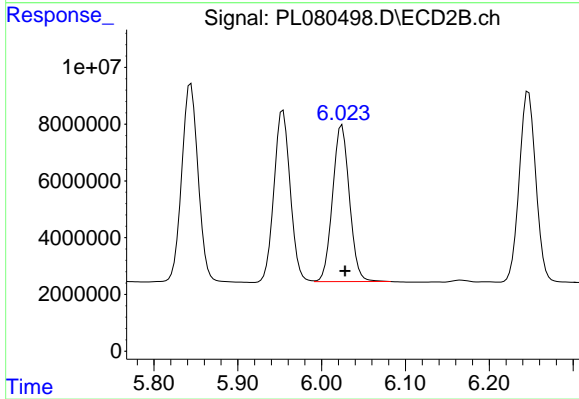
#17 4,4'-DDT

R.T.: 5.954 min
 Delta R.T.: -0.004 min
 Response: 80936768
 Conc: 38.51 ng/ml



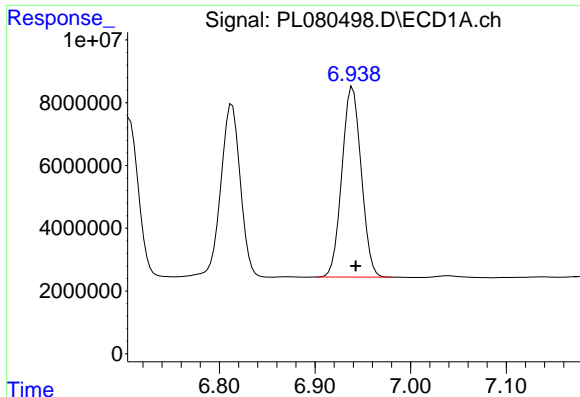
#18 Endrin aldehyde

R.T.: 6.706 min
 Delta R.T.: -0.003 min
 Response: 72931282
 Conc: 43.84 ng/ml



#18 Endrin aldehyde

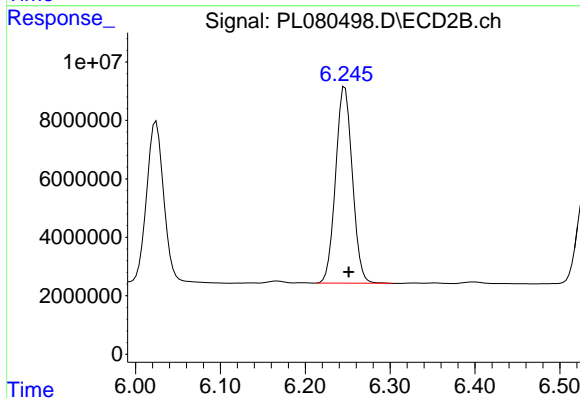
R.T.: 6.024 min
 Delta R.T.: -0.004 min
 Response: 76917193
 Conc: 42.12 ng/ml



#19 Endosulfan Sulfate

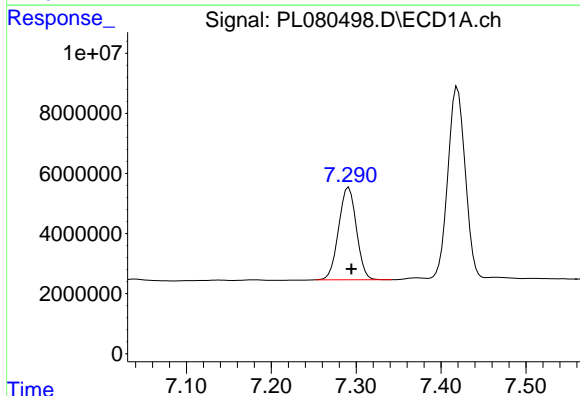
R.T.: 6.939 min
 Delta R.T.: -0.003 min
 Response: 85308299
 Conc: 41.21 ng/ml

Instrument :
 ECD_L
 ClientSampleId :
 TP-22MS



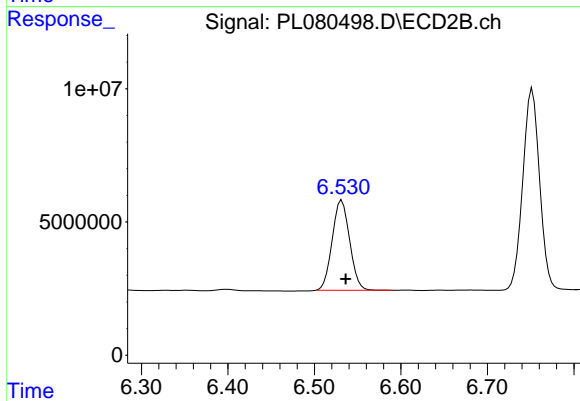
#19 Endosulfan Sulfate

R.T.: 6.247 min
 Delta R.T.: -0.004 min
 Response: 91979666
 Conc: 39.55 ng/ml



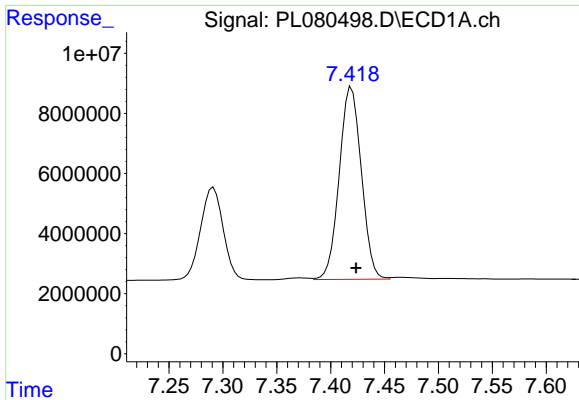
#20 Methoxychlor

R.T.: 7.291 min
 Delta R.T.: -0.003 min
 Response: 44768810
 Conc: 40.58 ng/ml



#20 Methoxychlor

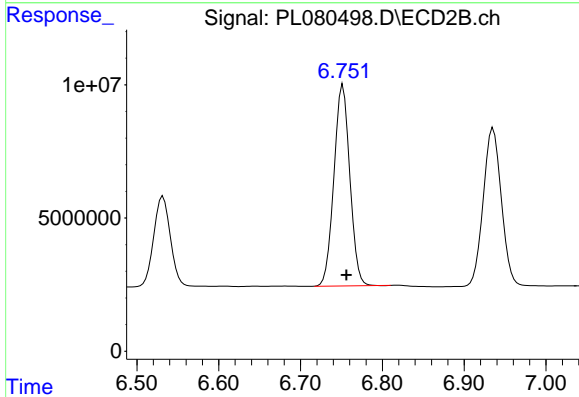
R.T.: 6.532 min
 Delta R.T.: -0.004 min
 Response: 47254783
 Conc: 38.94 ng/ml



#21 Endrin ketone

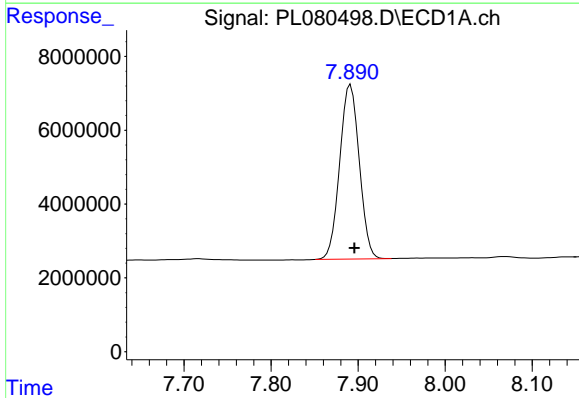
R.T.: 7.419 min
 Delta R.T.: -0.004 min
 Response: 91416330
 Conc: 41.43 ng/ml

Instrument :
 ECD_L
 ClientSampleId :
 TP-22MS



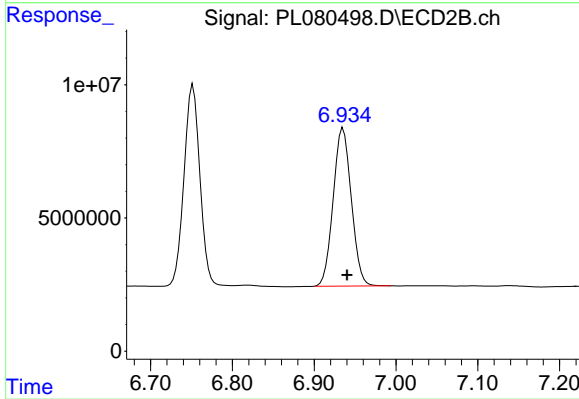
#21 Endrin ketone

R.T.: 6.752 min
 Delta R.T.: -0.004 min
 Response: 101932972
 Conc: 39.92 ng/ml



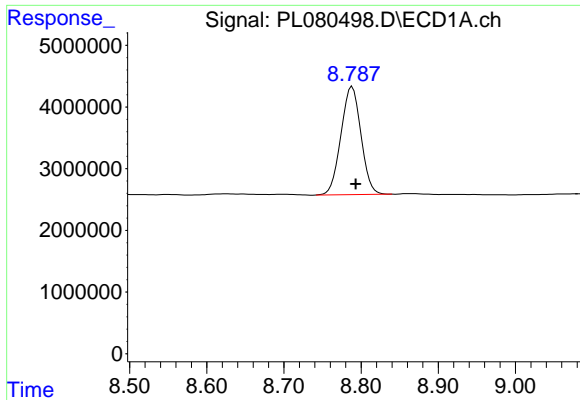
#22 Mirex

R.T.: 7.891 min
 Delta R.T.: -0.004 min
 Response: 73893093
 Conc: 42.97 ng/ml



#22 Mirex

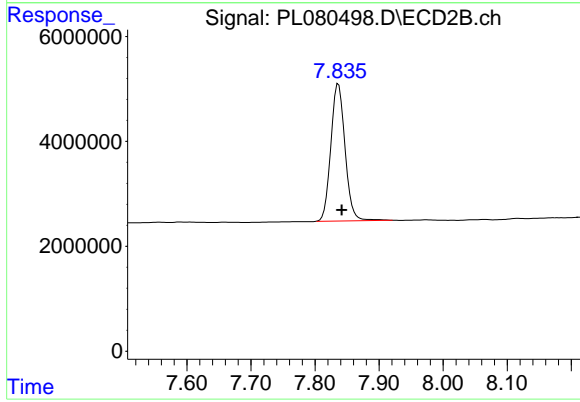
R.T.: 6.936 min
 Delta R.T.: -0.005 min
 Response: 91173396
 Conc: 40.05 ng/ml



#28 Decachlorobiphenyl

R.T.: 8.789 min
Delta R.T.: -0.005 min
Response: 31527381
Conc: 18.01 ng/ml

Instrument :
ECD_L
ClientSampleId :
TP-22MS



#28 Decachlorobiphenyl

R.T.: 7.837 min
Delta R.T.: -0.005 min
Response: 40402360
Conc: 16.96 ng/ml