

Data Path : Z:\pestpcbsrv\HPCHEM1\ECD_L\Data\PL012423\
 Data File : PL080501.D
 Signal(s) : Signal #1: ECD1A.ch Signal #2: ECD2B.ch
 Acq On : 24 Jan 2023 14:52
 Operator : AR\AJ
 Sample : 01260-10
 Misc :
 ALS Vial : 19 Sample Multiplier: 1

Instrument :
 ECD_L
 ClientSampleId :
 TP-24

Integration File signal 1: autoint1.e
 Integration File signal 2: autoint2.e
 Quant Time: Jan 24 20:54:32 2023
 Quant Method : Z:\pestpcbsrv\HPCHEM1\ECD_L\methods\PL012023.M
 Quant Title : GC Extractables
 QLast Update : Sun Jan 22 23:56:48 2023
 Response via : Initial Calibration
 Integrator: ChemStation

Volume Inj. : 1 µl
 Signal #1 Phase : ZB-MR2 Signal #2 Phase: ZB-MR1
 Signal #1 Info : 30M x 0.32mm x0.2 Signal #2 Info : 30M x 0.32mm x0.5µm

Compound	RT#1	RT#2	Resp#1	Resp#2	ng/ml	ng/ml

System Monitoring Compounds						
1) SA Tetrachlo...	3.349	2.688	37852364	39449398	17.648m	17.960
28) SA Decachlor...	8.786	7.836	31481889	40371745	17.982	16.945

Target Compounds

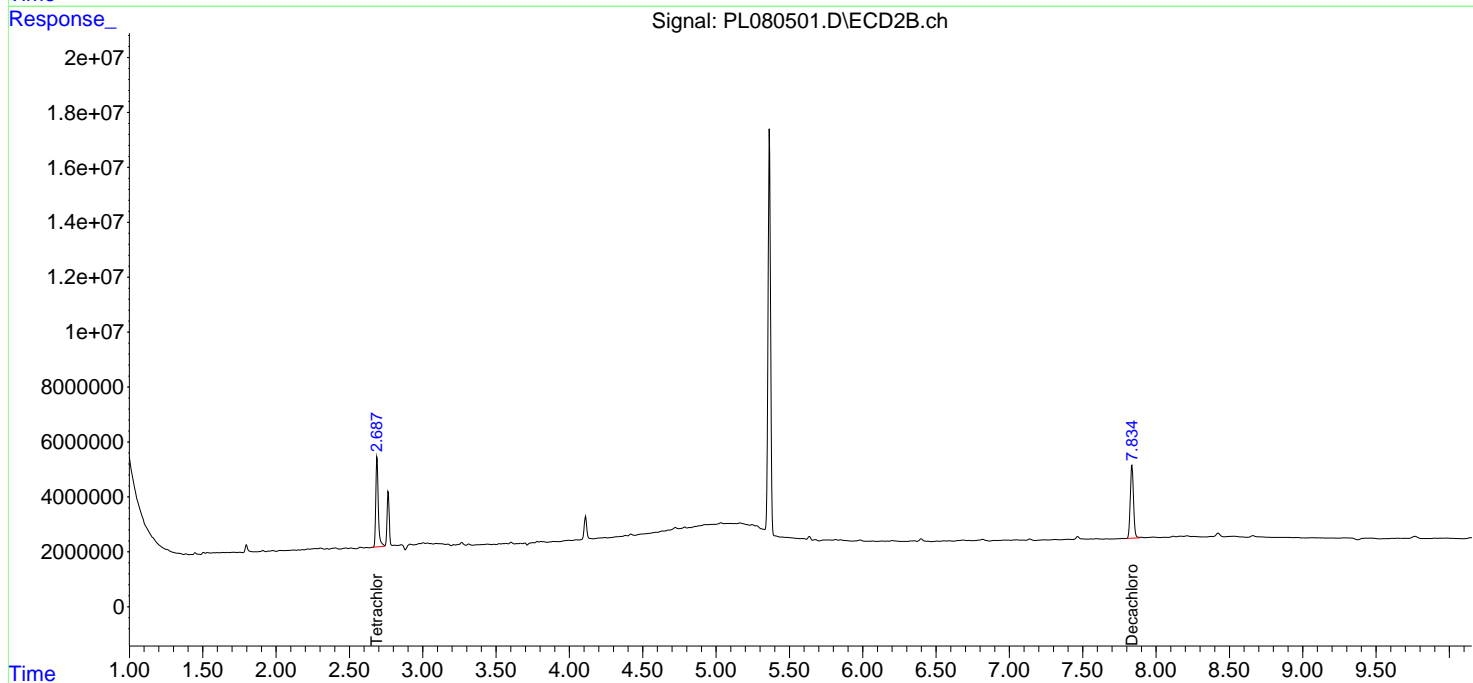
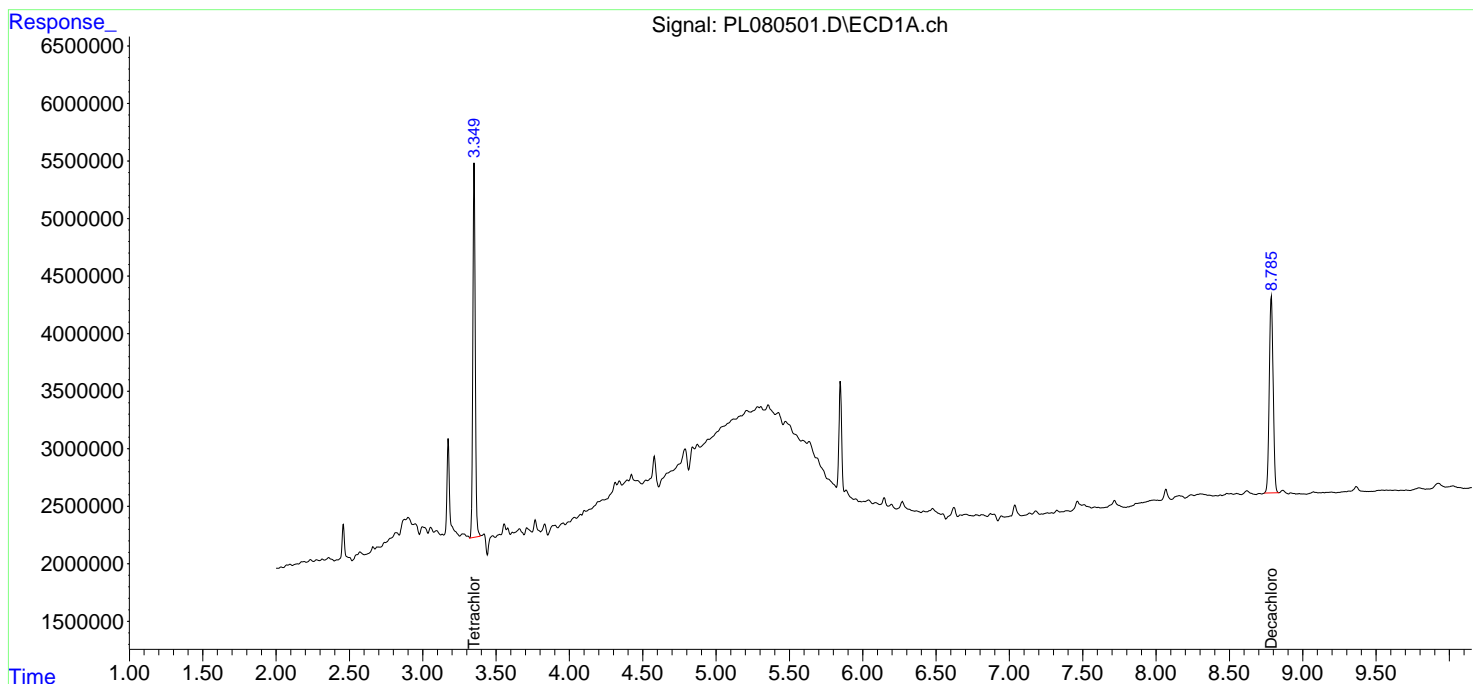
 (f)=RT Delta > 1/2 Window (#)=Amounts differ by > 25% (m)=manual int.

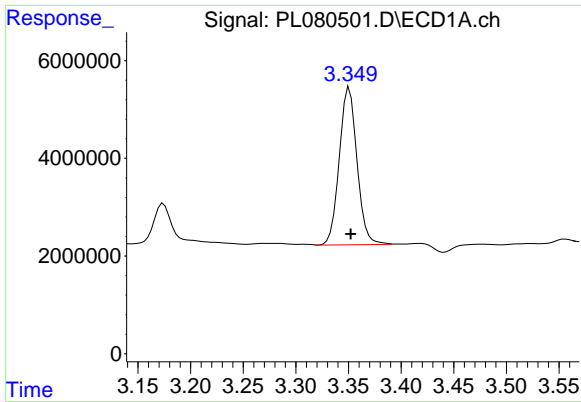
Data Path : Z:\pestpcbsrv\HPCHEM1\ECD_L\Data\PL012423\
 Data File : PL080501.D
 Signal(s) : Signal #1: ECD1A.ch Signal #2: ECD2B.ch
 Acq On : 24 Jan 2023 14:52
 Operator : AR\AJ
 Sample : 01260-10
 Misc :
 ALS Vial : 19 Sample Multiplier: 1

Instrument :
 ECD_L
 ClientSampleId :
 TP-24

Integration File signal 1: autoint1.e
 Integration File signal 2: autoint2.e
 Quant Time: Jan 24 20:54:32 2023
 Quant Method : Z:\pestpcbsrv\HPCHEM1\ECD_L\methods\PL012023.M
 Quant Title : GC Extractables
 QLast Update : Sun Jan 22 23:56:48 2023
 Response via : Initial Calibration
 Integrator: ChemStation

Volume Inj. : 1 µl
 Signal #1 Phase : ZB-MR2 Signal #2 Phase: ZB-MR1
 Signal #1 Info : 30M x 0.32mm x0.2 Signal #2 Info : 30M x 0.32mm x0.5µm

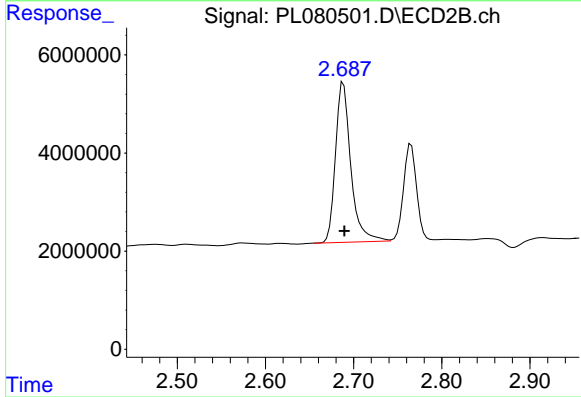




#1 Tetrachloro-m-xylene

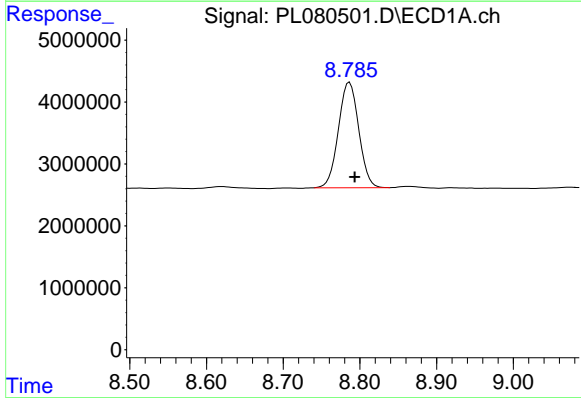
R.T.: 3.349 min
 Delta R.T.: -0.003 min
 Response: 37852364
 Conc: 17.65 ng/ml

Instrument :
 ECD_L
 ClientSampleId :
 TP-24



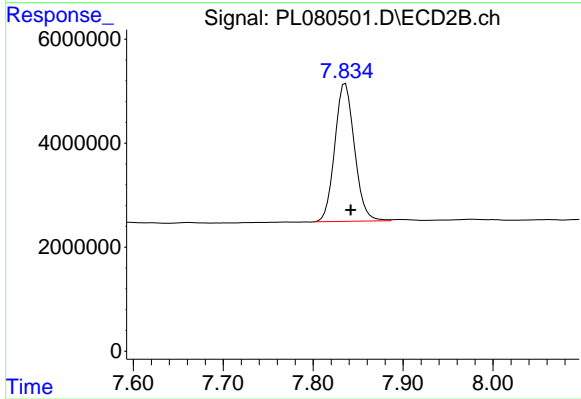
#1 Tetrachloro-m-xylene

R.T.: 2.688 min
 Delta R.T.: -0.001 min
 Response: 39449398
 Conc: 17.96 ng/ml



#28 Decachlorobiphenyl

R.T.: 8.786 min
 Delta R.T.: -0.007 min
 Response: 31481889
 Conc: 17.98 ng/ml



#28 Decachlorobiphenyl

R.T.: 7.836 min
 Delta R.T.: -0.006 min
 Response: 40371745
 Conc: 16.94 ng/ml