

Data Path : Z:\pestpcbsrv\HPCHEM1\ECD_L\Data\PL012423\
 Data File : PL080502.D
 Signal(s) : Signal #1: ECD1A.ch Signal #2: ECD2B.ch
 Acq On : 24 Jan 2023 15:06
 Operator : AR\AJ
 Sample : 01260-13
 Misc :
 ALS Vial : 20 Sample Multiplier: 1

Instrument :
 ECD_L
 ClientSampleId :
 TP-25

Integration File signal 1: autoint1.e
 Integration File signal 2: autoint2.e
 Quant Time: Jan 24 20:55:24 2023
 Quant Method : Z:\pestpcbsrv\HPCHEM1\ECD_L\methods\PL012023.M
 Quant Title : GC Extractables
 QLast Update : Sun Jan 22 23:56:48 2023
 Response via : Initial Calibration
 Integrator: ChemStation

Volume Inj. : 1 µl
 Signal #1 Phase : ZB-MR2 Signal #2 Phase: ZB-MR1
 Signal #1 Info : 30M x 0.32mm x0.2 Signal #2 Info : 30M x 0.32mm x0.5µm

Compound	RT#1	RT#2	Resp#1	Resp#2	ng/ml	ng/ml

System Monitoring Compounds						
1) SA Tetrachlo...	3.351	2.689	40768513	41354253	19.008	18.828
28) SA Decachlor...	8.789	7.837	30133310	38681927	17.212	16.236

Target Compounds

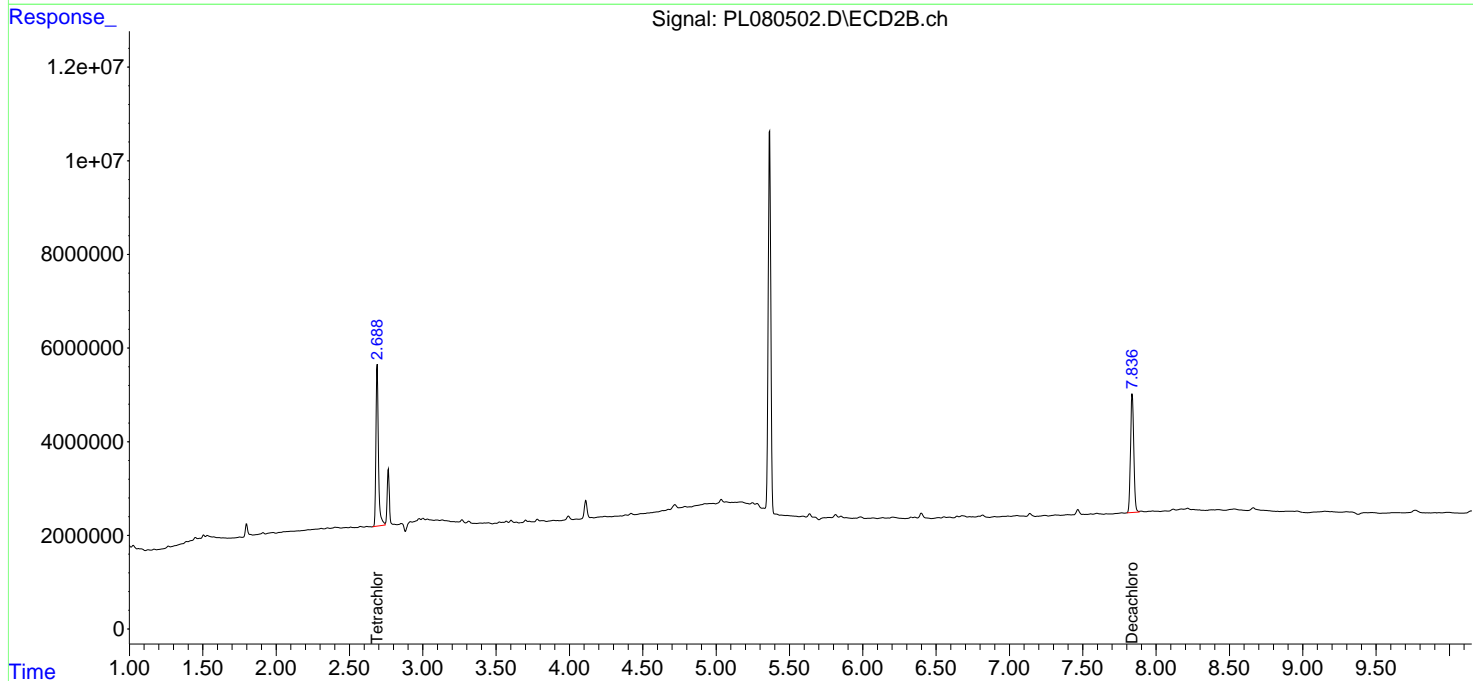
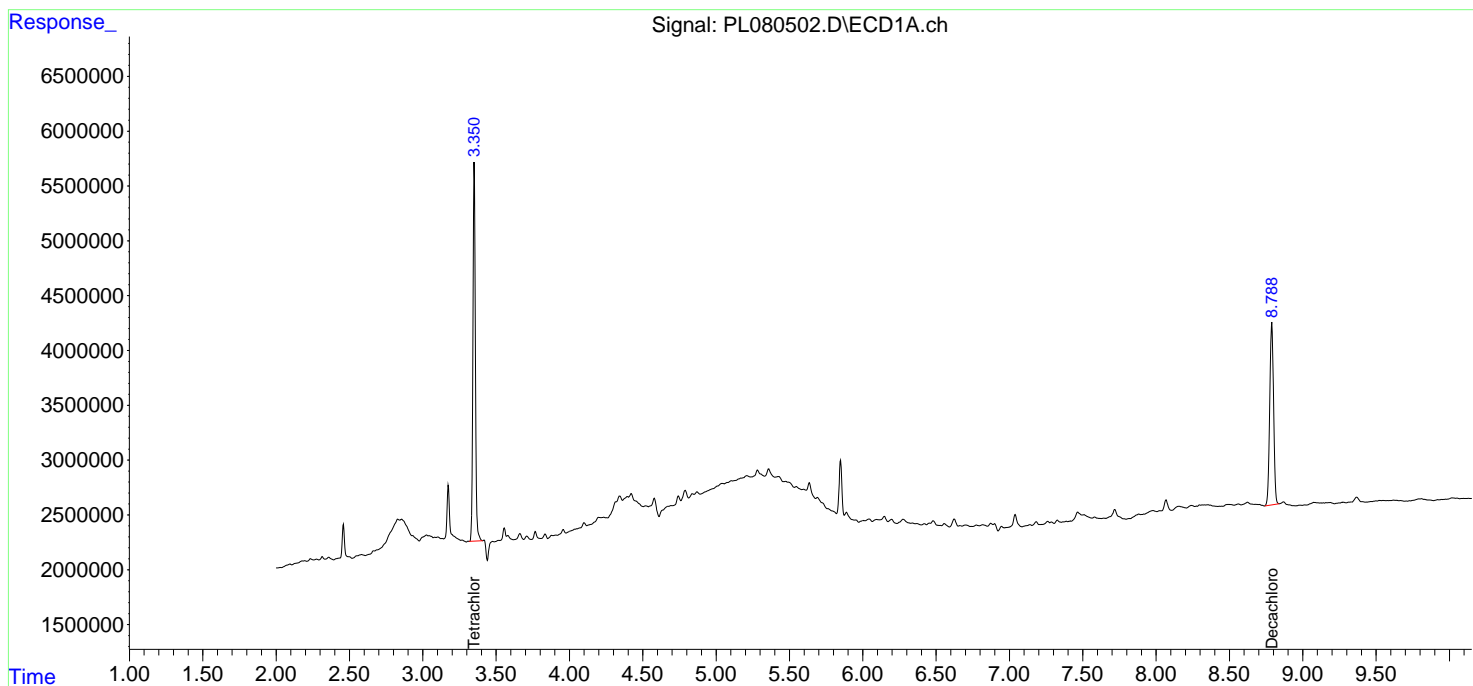
(f)=RT Delta > 1/2 Window (#)=Amounts differ by > 25% (m)=manual int.

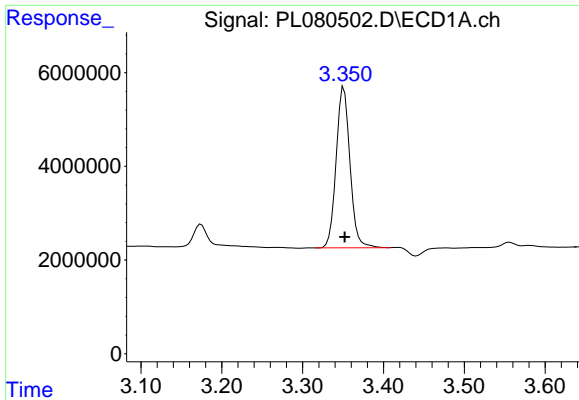
Data Path : Z:\pestpcbsrv\HPCHEM1\ECD_L\Data\PL012423\
Data File : PL080502.D
Signal(s) : Signal #1: ECD1A.ch Signal #2: ECD2B.ch
Acq On : 24 Jan 2023 15:06
Operator : AR\AJ
Sample : 01260-13
Misc :
ALS Vial : 20 Sample Multiplier: 1

Instrument :
ECD_L
ClientSampleId :
TP-25

Integration File signal 1: autoint1.e
Integration File signal 2: autoint2.e
Quant Time: Jan 24 20:55:24 2023
Quant Method : Z:\pestpcbsrv\HPCHEM1\ECD_L\methods\PL012023.M
Quant Title : GC Extractables
QLast Update : Sun Jan 22 23:56:48 2023
Response via : Initial Calibration
Integrator: ChemStation

Volume Inj. : 1 µl
Signal #1 Phase : ZB-MR2 Signal #2 Phase: ZB-MR1
Signal #1 Info : 30M x 0.32mm x0.2 Signal #2 Info : 30M x 0.32mm x0.5µm

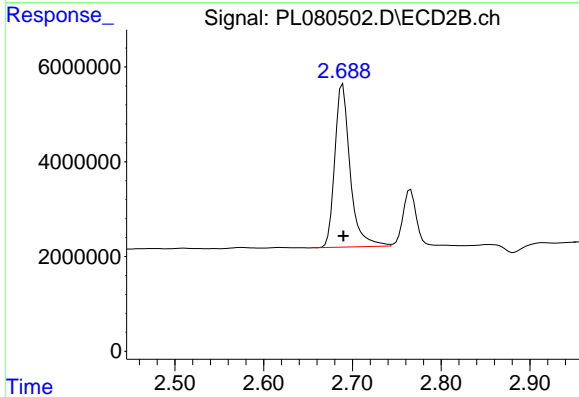




#1 Tetrachloro-m-xylene

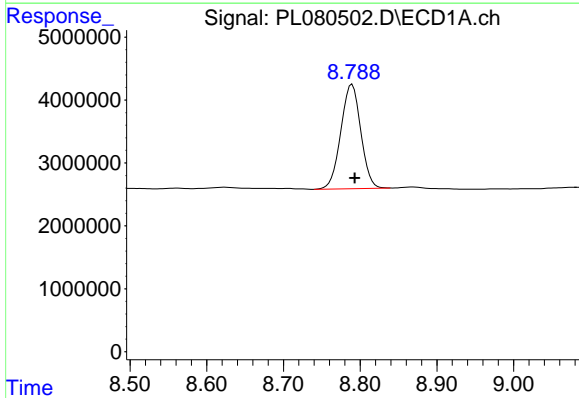
R.T.: 3.351 min
 Delta R.T.: 0.000 min
 Response: 40768513
 Conc: 19.01 ng/ml

Instrument :
 ECD_L
 ClientSampleId :
 TP-25



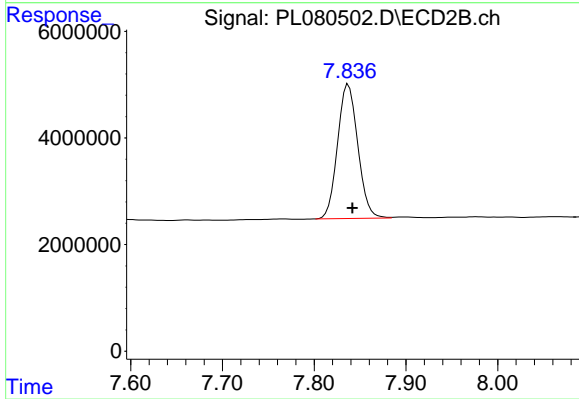
#1 Tetrachloro-m-xylene

R.T.: 2.689 min
 Delta R.T.: 0.000 min
 Response: 41354253
 Conc: 18.83 ng/ml



#28 Decachlorobiphenyl

R.T.: 8.789 min
 Delta R.T.: -0.004 min
 Response: 30133310
 Conc: 17.21 ng/ml



#28 Decachlorobiphenyl

R.T.: 7.837 min
 Delta R.T.: -0.004 min
 Response: 38681927
 Conc: 16.24 ng/ml