

Data Path : Z:\pestpcbsrv\HPCHEM1\ECD\_L\Data\PL012423\  
 Data File : PL080509.D  
 Signal(s) : Signal #1: ECD1A.ch Signal #2: ECD2B.ch  
 Acq On : 24 Jan 2023 16:52  
 Operator : AR\AJ  
 Sample : 01268-01  
 Misc :  
 ALS Vial : 25 Sample Multiplier: 1

Instrument :  
 ECD\_L  
 ClientSampleId :  
 TR-06-012323

Integration File signal 1: autoint1.e  
 Integration File signal 2: autoint2.e  
 Quant Time: Jan 24 21:01:29 2023  
 Quant Method : Z:\pestpcbsrv\HPCHEM1\ECD\_L\methods\PL012023.M  
 Quant Title : GC Extractables  
 QLast Update : Sun Jan 22 23:56:48 2023  
 Response via : Initial Calibration  
 Integrator: ChemStation

Volume Inj. : 1 µl  
 Signal #1 Phase : ZB-MR2 Signal #2 Phase: ZB-MR1  
 Signal #1 Info : 30M x 0.32mm x0.2 Signal #2 Info : 30M x 0.32mm x0.5µm

Compound	RT#1	RT#2	Resp#1	Resp#2	ng/ml	ng/ml
-----						
System Monitoring Compounds						
1) SA Tetrachlo...	3.351	2.689	18848838	18053474	8.788	8.219
2) SA Decachlor...	8.787	7.836	16142537	21238757	9.220	8.914

Target Compounds

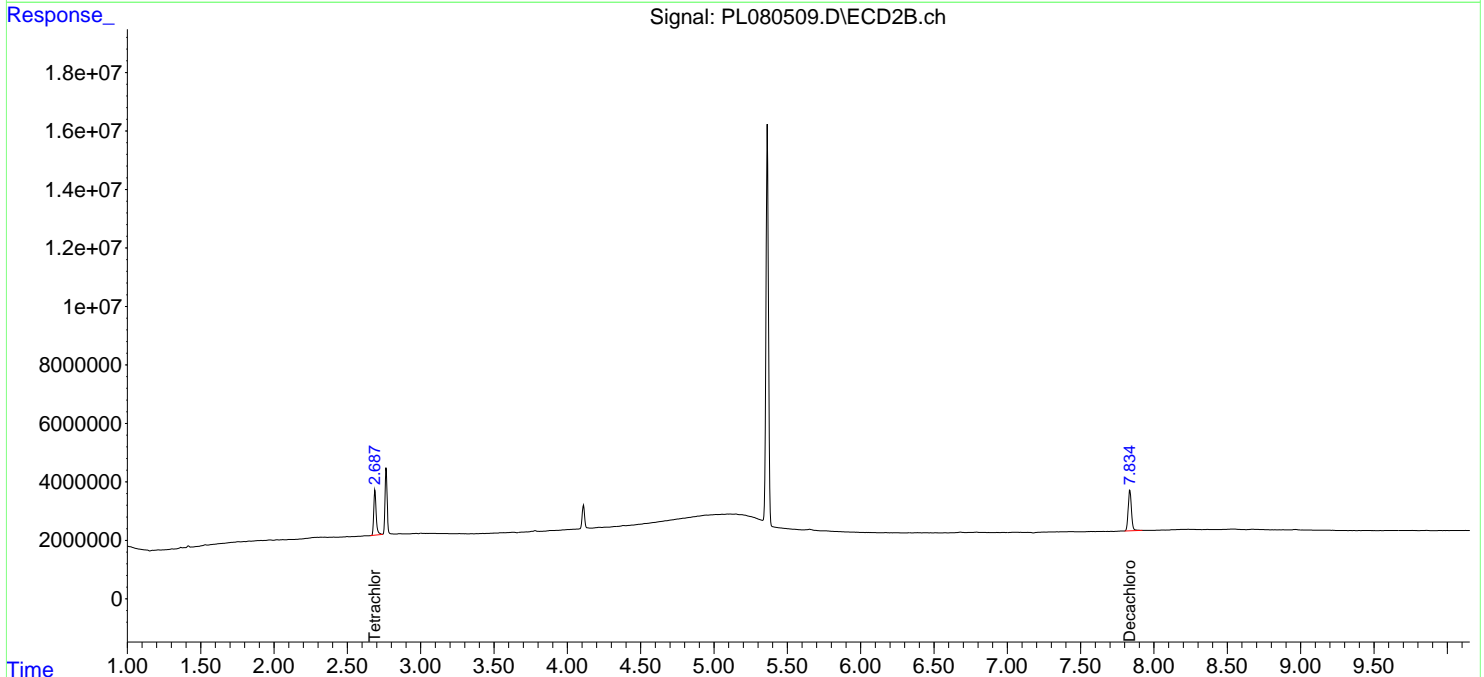
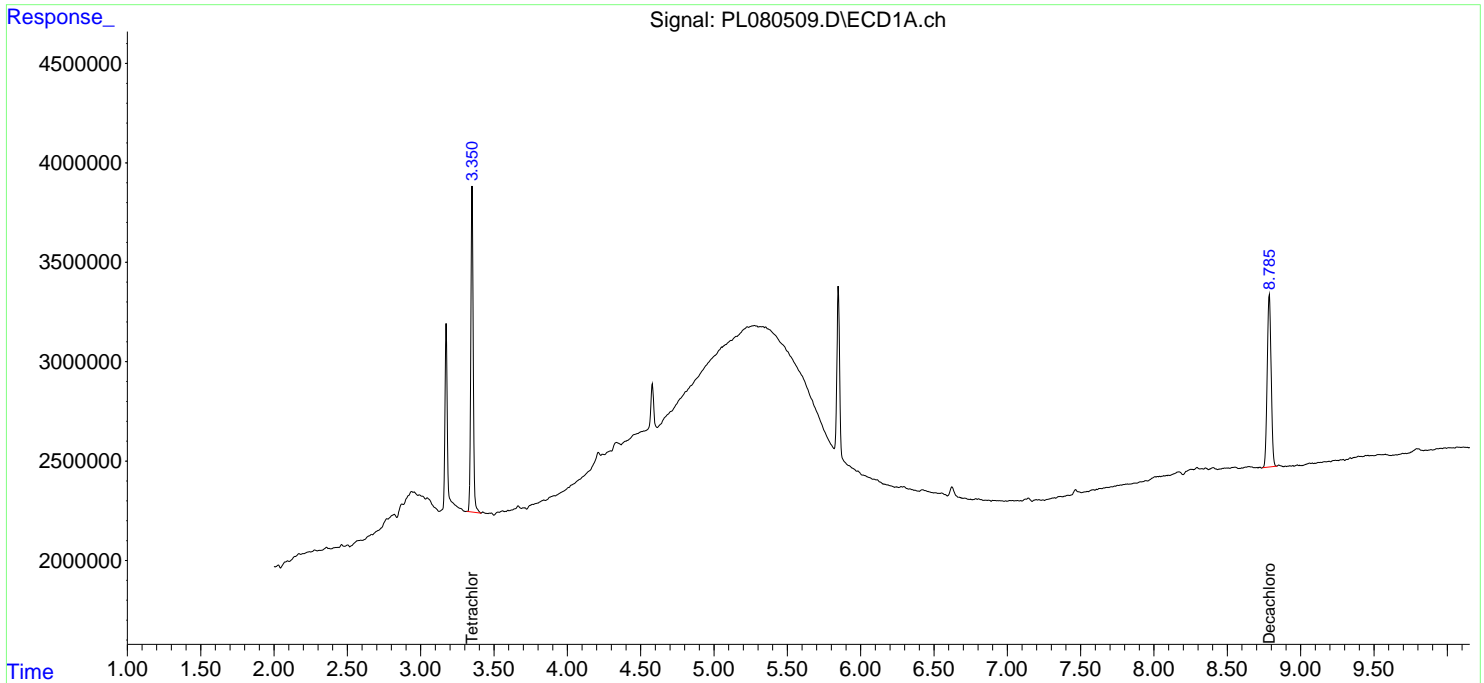
(f)=RT Delta > 1/2 Window (#)=Amounts differ by > 25% (m)=manual int.

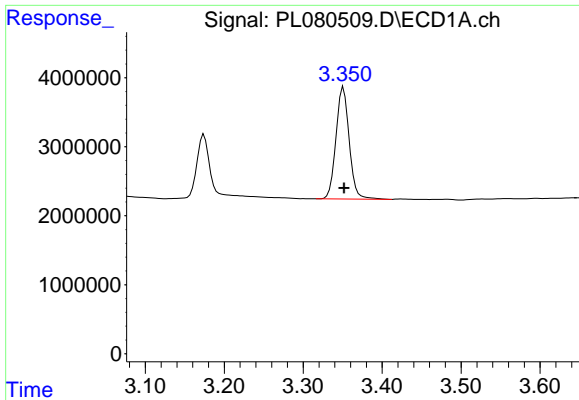
Data Path : Z:\pestpcbsrv\HPCHEM1\ECD\_L\Data\PL012423\  
 Data File : PL080509.D  
 Signal(s) : Signal #1: ECD1A.ch Signal #2: ECD2B.ch  
 Acq On : 24 Jan 2023 16:52  
 Operator : AR\AJ  
 Sample : 01268-01  
 Misc :  
 ALS Vial : 25 Sample Multiplier: 1

Instrument :  
 ECD\_L  
 ClientSampleId :  
 TR-06-012323

Integration File signal 1: autoint1.e  
 Integration File signal 2: autoint2.e  
 Quant Time: Jan 24 21:01:29 2023  
 Quant Method : Z:\pestpcbsrv\HPCHEM1\ECD\_L\methods\PL012023.M  
 Quant Title : GC Extractables  
 QLast Update : Sun Jan 22 23:56:48 2023  
 Response via : Initial Calibration  
 Integrator: ChemStation

Volume Inj. : 1 µl  
 Signal #1 Phase : ZB-MR2 Signal #2 Phase: ZB-MR1  
 Signal #1 Info : 30M x 0.32mm x0.2 Signal #2 Info : 30M x 0.32mm x0.5µm

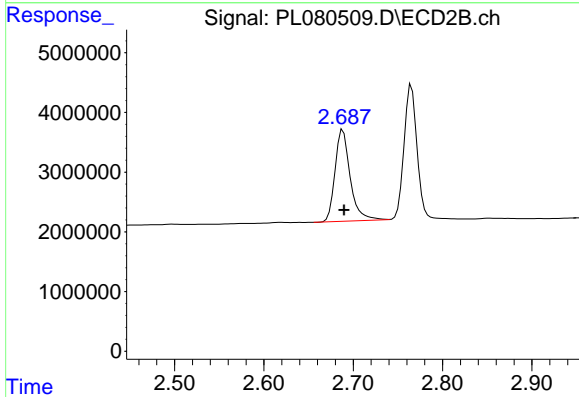




#1 Tetrachloro-m-xylene

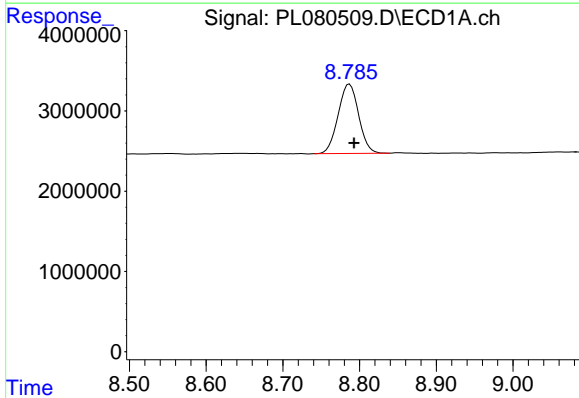
R.T.: 3.351 min  
 Delta R.T.: 0.000 min  
 Response: 18848838  
 Conc: 8.79 ng/ml

Instrument :  
 ECD\_L  
 ClientSampleId :  
 TR-06-012323



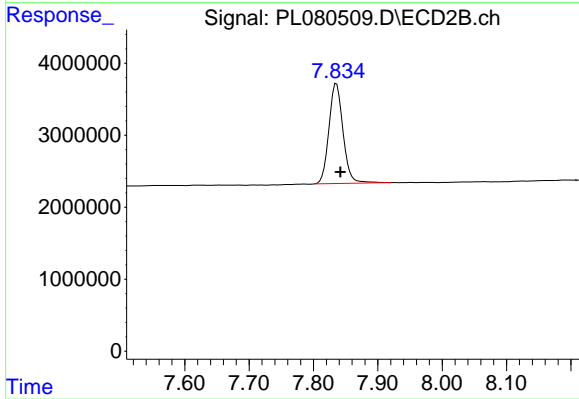
#1 Tetrachloro-m-xylene

R.T.: 2.689 min  
 Delta R.T.: -0.001 min  
 Response: 18053474  
 Conc: 8.22 ng/ml



#28 Decachlorobiphenyl

R.T.: 8.787 min  
 Delta R.T.: -0.006 min  
 Response: 16142537  
 Conc: 9.22 ng/ml



#28 Decachlorobiphenyl

R.T.: 7.836 min  
 Delta R.T.: -0.006 min  
 Response: 21238757  
 Conc: 8.91 ng/ml