

Data Path : Z:\pestpcbsrv\HPCHEM1\ECD\_L\Data\PL012423\  
 Data File : PL080510.D  
 Signal(s) : Signal #1: ECD1A.ch Signal #2: ECD2B.ch  
 Acq On : 24 Jan 2023 17:06  
 Operator : AR\AJ  
 Sample : I.BLK  
 Misc :  
 ALS Vial : 2 Sample Multiplier: 1

Instrument :  
 ECD\_L  
 ClientSampleId :  
 I.BLK

Integration File signal 1: autoint1.e  
 Integration File signal 2: autoint2.e  
 Quant Time: Jan 24 21:01:50 2023  
 Quant Method : Z:\pestpcbsrv\HPCHEM1\ECD\_L\methods\PL012023.M  
 Quant Title : GC Extractables  
 QLast Update : Sun Jan 22 23:56:48 2023  
 Response via : Initial Calibration  
 Integrator: ChemStation

Volume Inj. : 1 µl  
 Signal #1 Phase : ZB-MR2 Signal #2 Phase: ZB-MR1  
 Signal #1 Info : 30M x 0.32mm x0.2 Signal #2 Info : 30M x 0.32mm x0.5µm

Compound	RT#1	RT#2	Resp#1	Resp#2	ng/ml	ng/ml
-----						
System Monitoring Compounds						
1) SA Tetrachlo...	3.351	2.689	39582026	39904812	18.455	18.168
28) SA Decachlor...	8.786	7.836	33695538	43273871	19.246	18.163

Target Compounds

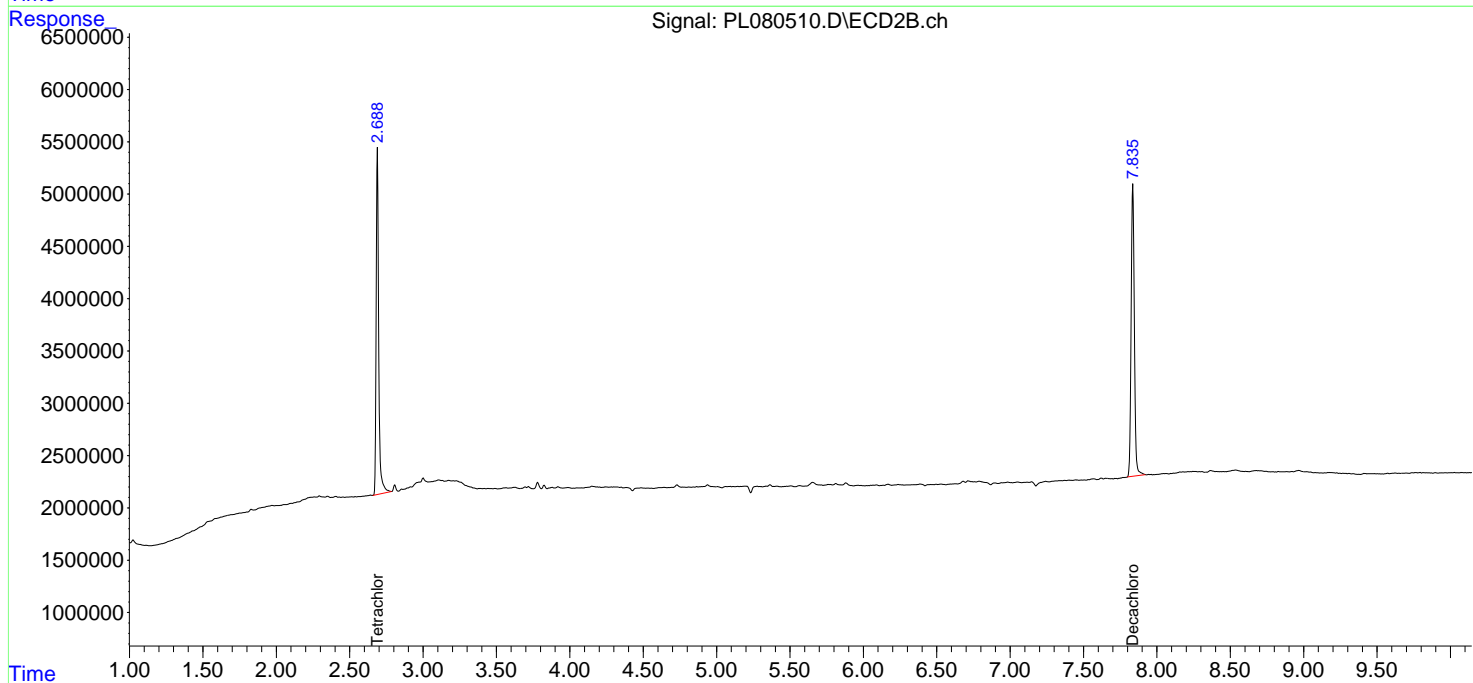
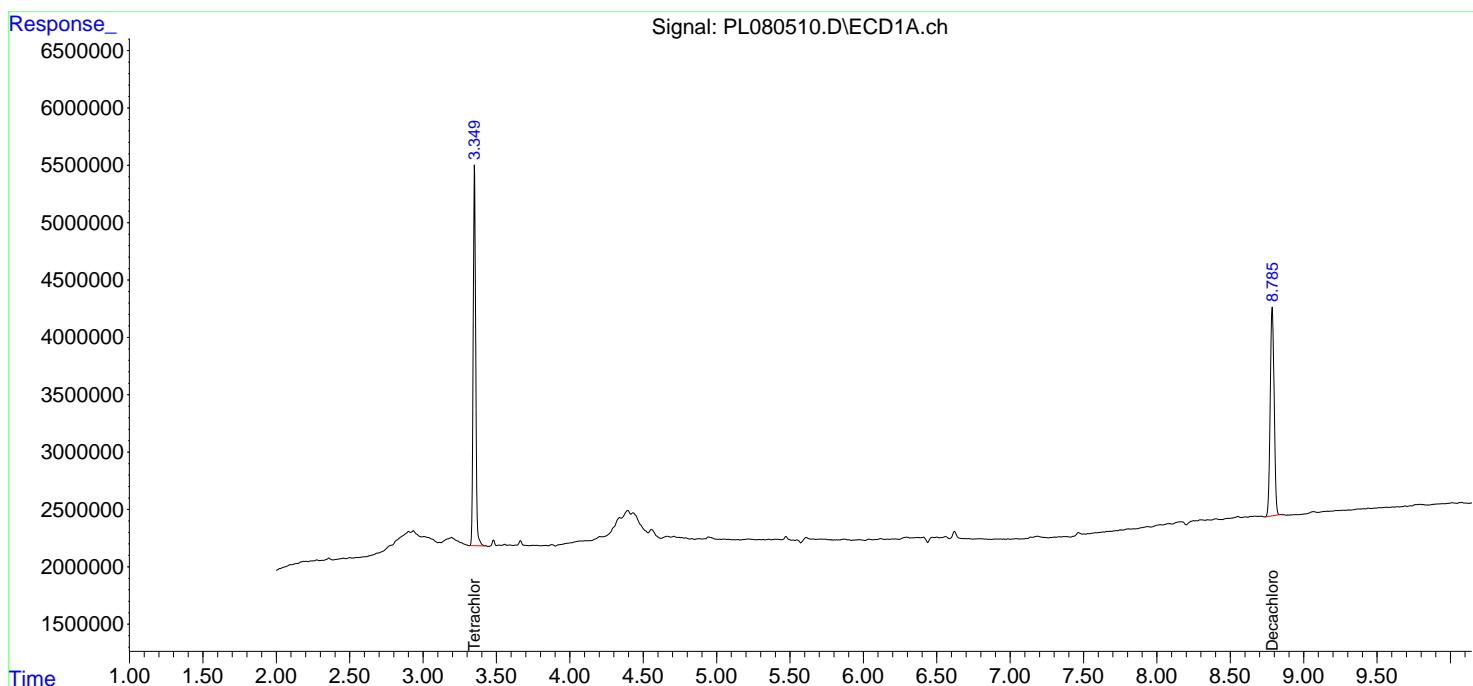
-----  
 (f)=RT Delta > 1/2 Window (#)=Amounts differ by > 25% (m)=manual int.

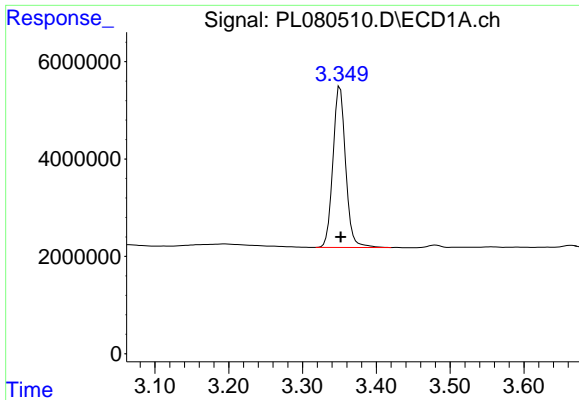
Data Path : Z:\pestpcbsrv\HPCHEM1\ECD\_L\Data\PL012423\  
 Data File : PL080510.D  
 Signal(s) : Signal #1: ECD1A.ch Signal #2: ECD2B.ch  
 Acq On : 24 Jan 2023 17:06  
 Operator : AR\AJ  
 Sample : I.BLK  
 Misc :  
 ALS Vial : 2 Sample Multiplier: 1

Instrument :  
 ECD\_L  
 ClientSampleId :  
 I.BLK

Integration File signal 1: autoint1.e  
 Integration File signal 2: autoint2.e  
 Quant Time: Jan 24 21:01:50 2023  
 Quant Method : Z:\pestpcbsrv\HPCHEM1\ECD\_L\methods\PL012023.M  
 Quant Title : GC Extractables  
 QLast Update : Sun Jan 22 23:56:48 2023  
 Response via : Initial Calibration  
 Integrator: ChemStation

Volume Inj. : 1 µl  
 Signal #1 Phase : ZB-MR2 Signal #2 Phase: ZB-MR1  
 Signal #1 Info : 30M x 0.32mm x0.2 Signal #2 Info : 30M x 0.32mm x0.5µm

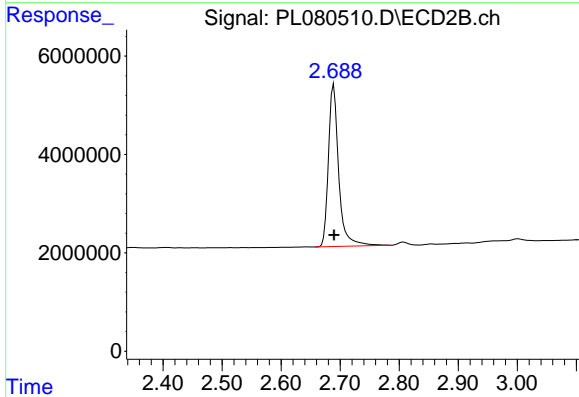




#1 Tetrachloro-m-xylene

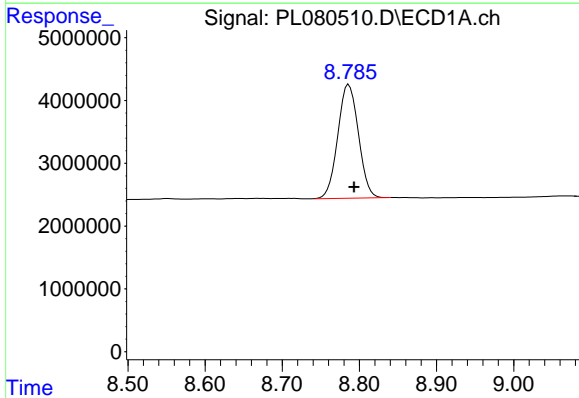
R.T.: 3.351 min  
Delta R.T.: -0.001 min  
Response: 39582026  
Conc: 18.45 ng/ml

Instrument :  
ECD\_L  
ClientSampleId :  
I.BLK



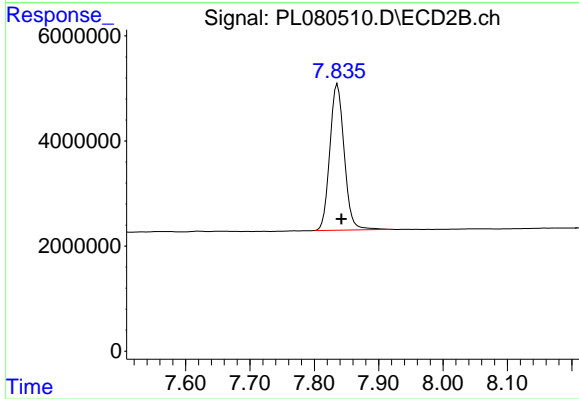
#1 Tetrachloro-m-xylene

R.T.: 2.689 min  
Delta R.T.: 0.000 min  
Response: 39904812  
Conc: 18.17 ng/ml



#28 Decachlorobiphenyl

R.T.: 8.786 min  
Delta R.T.: -0.007 min  
Response: 33695538  
Conc: 19.25 ng/ml



#28 Decachlorobiphenyl

R.T.: 7.836 min  
Delta R.T.: -0.006 min  
Response: 43273871  
Conc: 18.16 ng/ml