

Data Path : Z:\pestpcbsrv\HPCHEM1\ECD\_L\Data\PL012521\  
 Data File : PL064372.D  
 Signal(s) : Signal #1: ECD1A.ch Signal #2: ECD2B.ch  
 Acq On : 25 Jan 2021 10:57  
 Operator : AR\AJ  
 Sample : I.BLK  
 Misc :  
 ALS Vial : 2 Sample Multiplier: 1

Instrument :  
 ECD\_L  
 ClientSampleId :  
 I.BLK

Integration File signal 1: autoint1.e  
 Integration File signal 2: autoint2.e  
 Quant Time: Jan 26 01:58:46 2021  
 Quant Method : Z:\pestpcbsrv\HPCHEM1\ECD\_L\methods\PL011221.M  
 Quant Title : GC Extractables  
 QLast Update : Mon Jan 18 13:25:12 2021  
 Response via : Initial Calibration  
 Integrator: ChemStation

Volume Inj. : 1 µl  
 Signal #1 Phase : ZB-MR2 Signal #2 Phase: ZB-MR1  
 Signal #1 Info : 30M x 0.32mm x0.2 Signal #2 Info : 30M x 0.32mm x0.5µm

Compound	RT#1	RT#2	Resp#1	Resp#2	ng/ml	ng/ml
-----						
System Monitoring Compounds						
1) SA Tetrachlo...	3.433	4.107	55117837	45121859	18.382	17.650
28) SA Decachlor...	8.164	9.268	58509602	44105071	19.170	18.583

Target Compounds

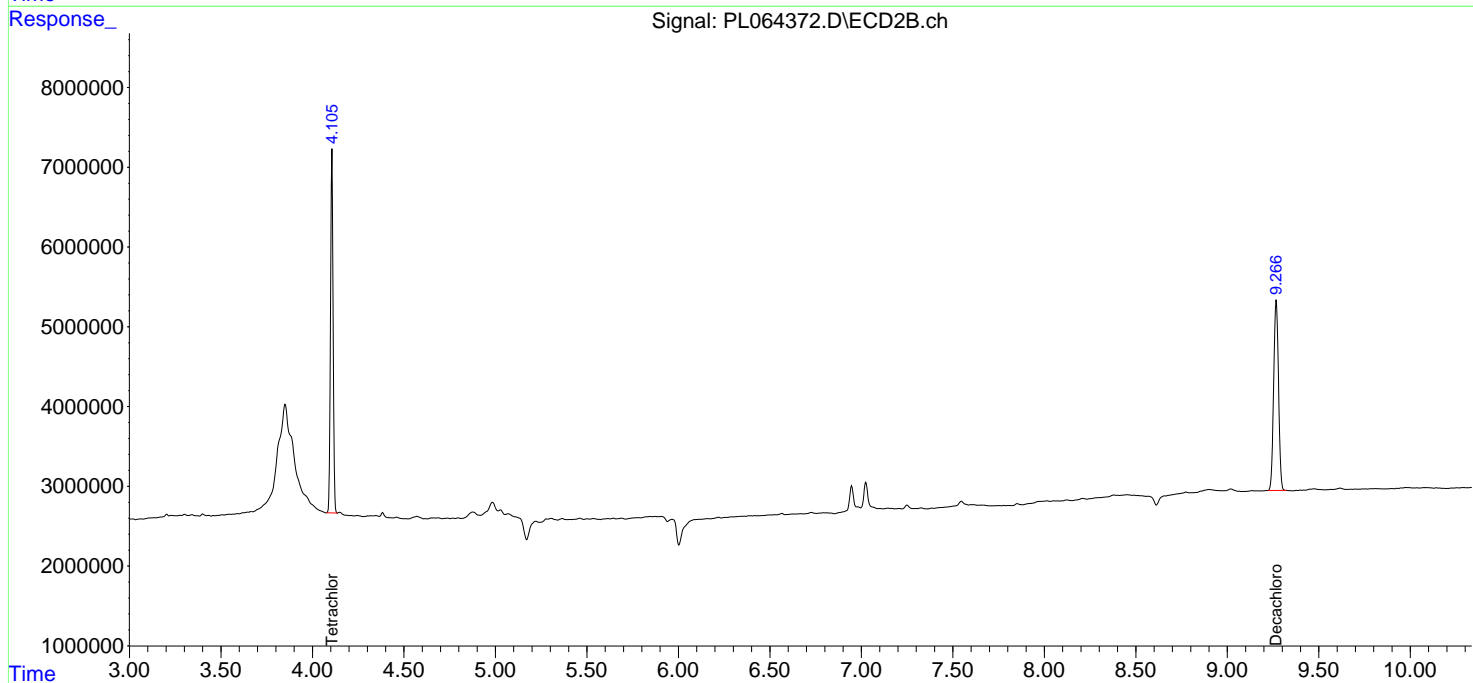
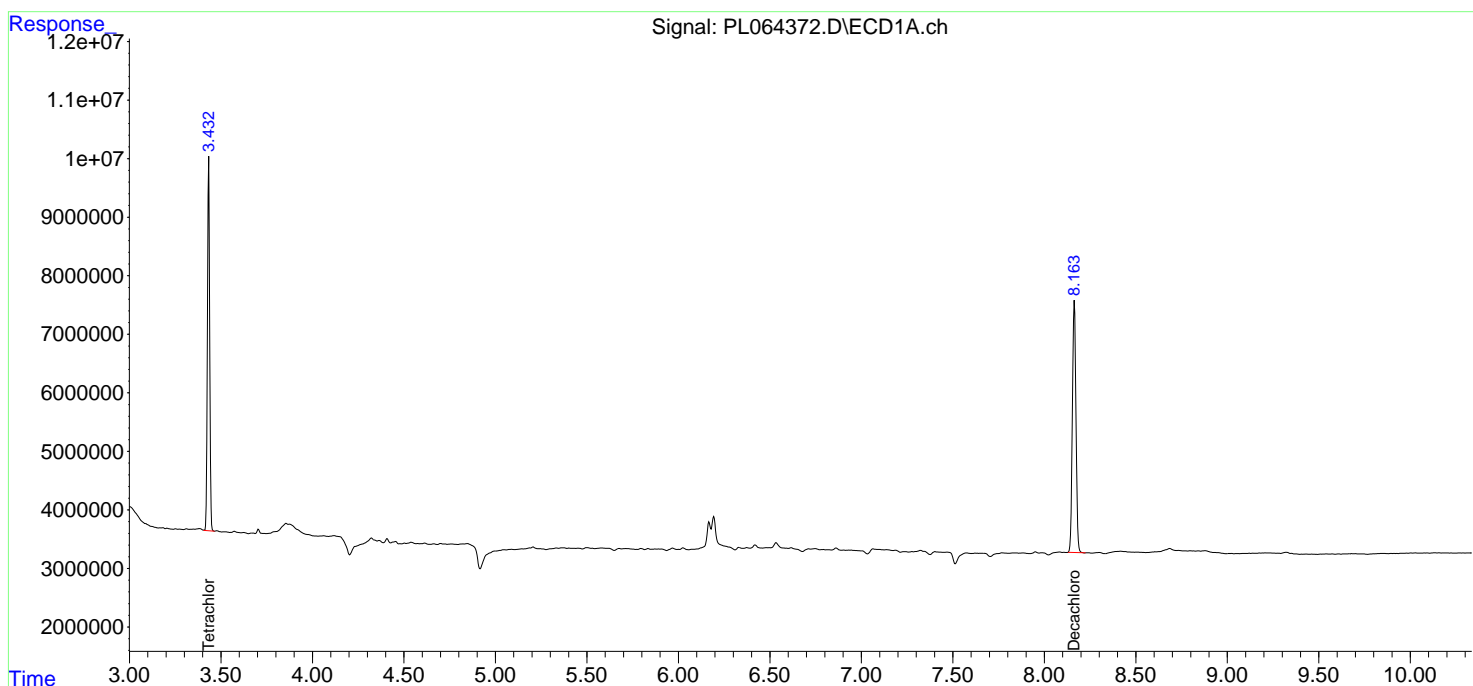
-----  
 (f)=RT Delta > 1/2 Window (#)=Amounts differ by > 25% (m)=manual int.

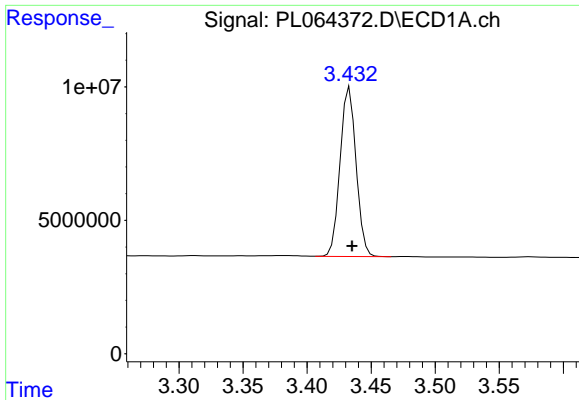
Data Path : Z:\pestpcbsrv\HPCHEM1\ECD\_L\Data\PL012521\  
 Data File : PL064372.D  
 Signal(s) : Signal #1: ECD1A.ch Signal #2: ECD2B.ch  
 Acq On : 25 Jan 2021 10:57  
 Operator : AR\AJ  
 Sample : I.BLK  
 Misc :  
 ALS Vial : 2 Sample Multiplier: 1

Instrument :  
 ECD\_L  
 ClientSampled :  
 I.BLK

Integration File signal 1: autoint1.e  
 Integration File signal 2: autoint2.e  
 Quant Time: Jan 26 01:58:46 2021  
 Quant Method : Z:\pestpcbsrv\HPCHEM1\ECD\_L\methods\PL011221.M  
 Quant Title : GC Extractables  
 QLast Update : Mon Jan 18 13:25:12 2021  
 Response via : Initial Calibration  
 Integrator: ChemStation

Volume Inj. : 1 µl  
 Signal #1 Phase : ZB-MR2 Signal #2 Phase: ZB-MR1  
 Signal #1 Info : 30M x 0.32mm x0.2 Signal #2 Info : 30M x 0.32mm x0.5µm

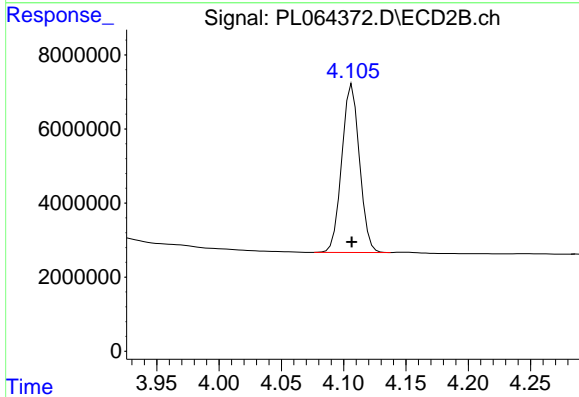




#1 Tetrachloro-m-xylene

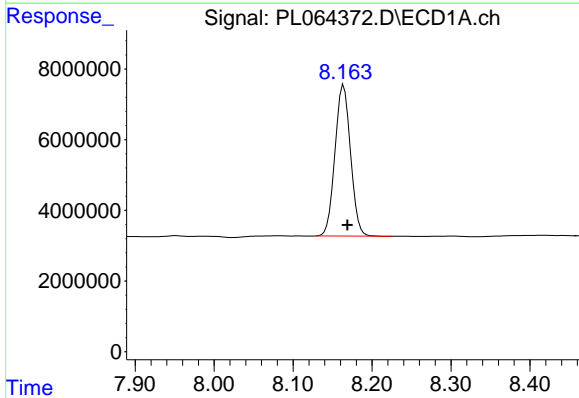
R.T.: 3.433 min  
 Delta R.T.: -0.002 min  
 Response: 55117837  
 Conc: 18.38 ng/ml

Instrument :  
 ECD\_L  
 ClientSampled :  
 I.BLK



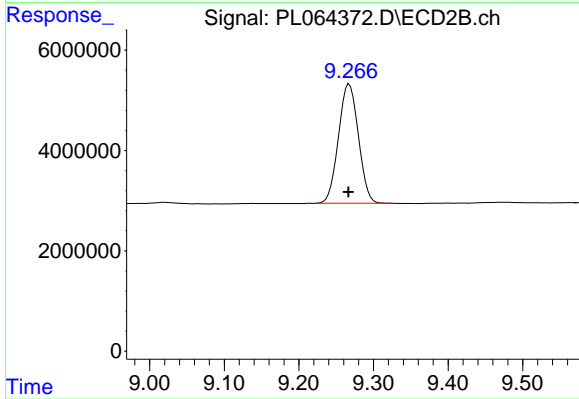
#1 Tetrachloro-m-xylene

R.T.: 4.107 min  
 Delta R.T.: 0.000 min  
 Response: 45121859  
 Conc: 17.65 ng/ml



#28 Decachlorobiphenyl

R.T.: 8.164 min  
 Delta R.T.: -0.005 min  
 Response: 58509602  
 Conc: 19.17 ng/ml



#28 Decachlorobiphenyl

R.T.: 9.268 min  
 Delta R.T.: 0.001 min  
 Response: 44105071  
 Conc: 18.58 ng/ml