

Data Path : Z:\pestpcbsrv\HPCHEM1\ECD_L\Data\PL012521\
 Data File : PL064388.D
 Signal(s) : Signal #1: ECD1A.ch Signal #2: ECD2B.ch
 Acq On : 25 Jan 2021 15:00
 Operator : AR\AJ
 Sample : PB134299BL
 Misc :
 ALS Vial : 18 Sample Multiplier: 1

Instrument :
 ECD_L
 ClientSampleID :
 PB134299BL

Integration File signal 1: autoint1.e
 Integration File signal 2: autoint2.e
 Quant Time: Jan 26 02:02:15 2021
 Quant Method : Z:\pestpcbsrv\HPCHEM1\ECD_L\methods\PL011221.M
 Quant Title : GC Extractables
 QLast Update : Mon Jan 18 13:25:12 2021
 Response via : Initial Calibration
 Integrator: ChemStation

Volume Inj. : 1 µl
 Signal #1 Phase : ZB-MR2 Signal #2 Phase: ZB-MR1
 Signal #1 Info : 30M x 0.32mm x0.2 Signal #2 Info : 30M x 0.32mm x0.5µm

Compound	RT#1	RT#2	Resp#1	Resp#2	ng/ml	ng/ml

System Monitoring Compounds						
1) SA Tetrachlo...	3.434	4.107	58841716	47340097	19.624	18.518
28) SA Decachlor...	8.165	9.269	52456237	38964262	17.187	16.417

Target Compounds

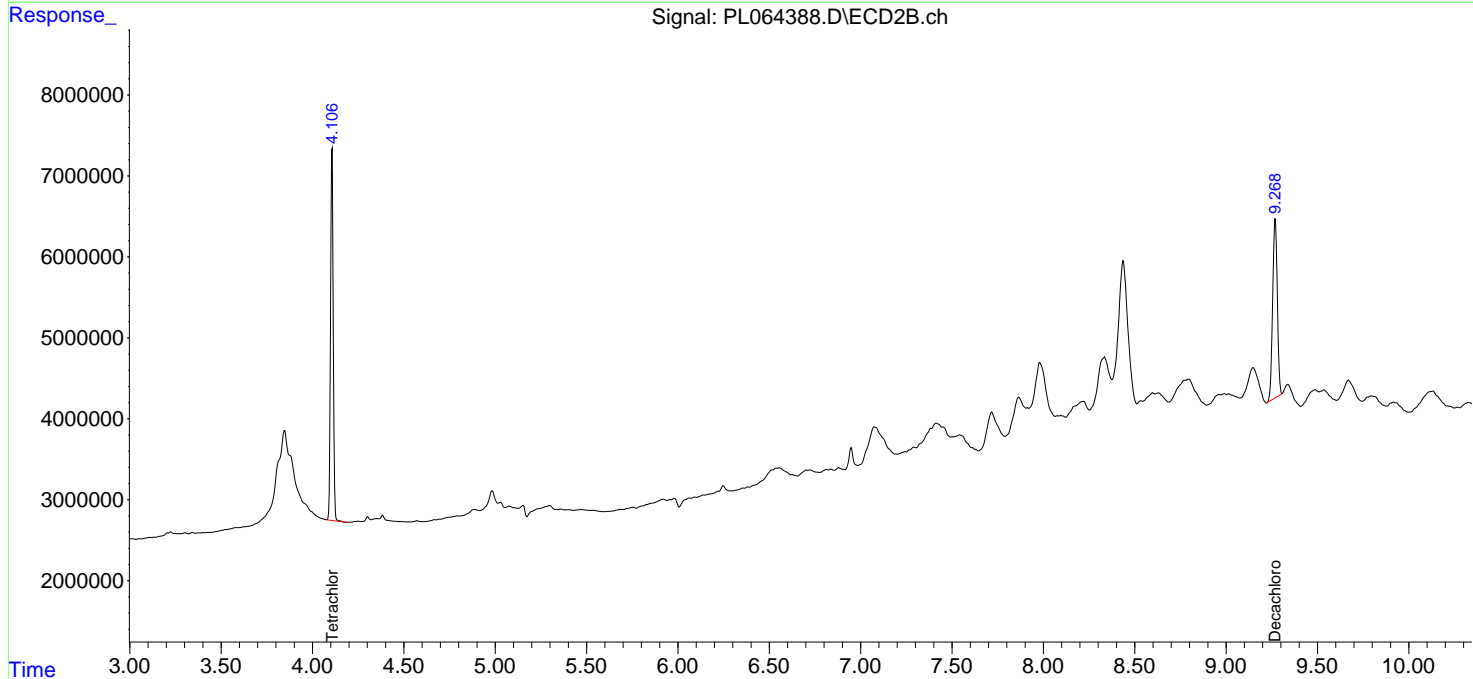
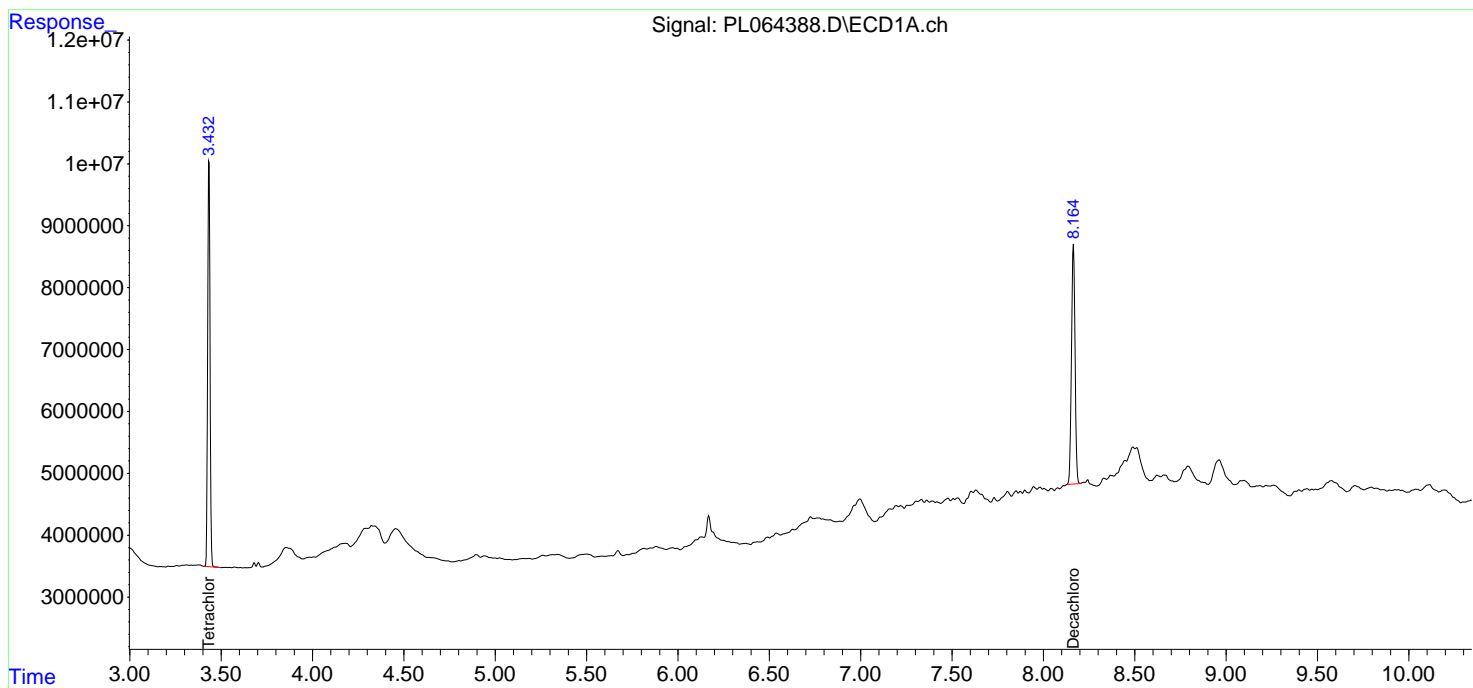
(f)=RT Delta > 1/2 Window (#)=Amounts differ by > 25% (m)=manual int.

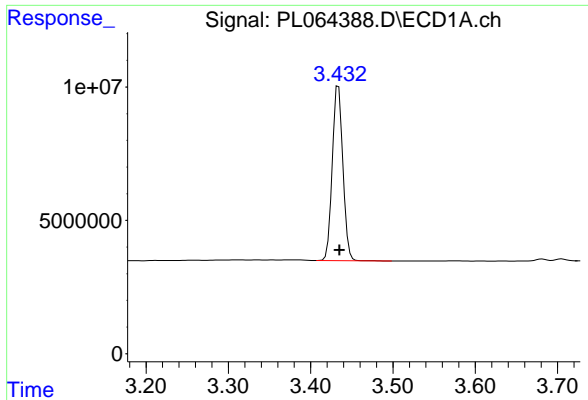
Data Path : Z:\pestpcbsrv\HPCHEM1\ECD_L\Data\PL012521\
 Data File : PL064388.D
 Signal(s) : Signal #1: ECD1A.ch Signal #2: ECD2B.ch
 Acq On : 25 Jan 2021 15:00
 Operator : AR\AJ
 Sample : PB134299BL
 Misc :
 ALS Vial : 18 Sample Multiplier: 1

Instrument :
 ECD_L
 ClientSampled :
 PB134299BL

Integration File signal 1: autoint1.e
 Integration File signal 2: autoint2.e
 Quant Time: Jan 26 02:02:15 2021
 Quant Method : Z:\pestpcbsrv\HPCHEM1\ECD_L\methods\PL011221.M
 Quant Title : GC Extractables
 QLast Update : Mon Jan 18 13:25:12 2021
 Response via : Initial Calibration
 Integrator: ChemStation

Volume Inj. : 1 µl
 Signal #1 Phase : ZB-MR2 Signal #2 Phase: ZB-MR1
 Signal #1 Info : 30M x 0.32mm x0.2 Signal #2 Info : 30M x 0.32mm x0.5µm

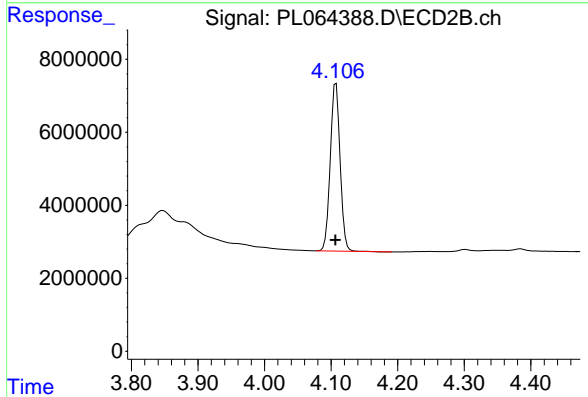




#1 Tetrachloro-m-xylene

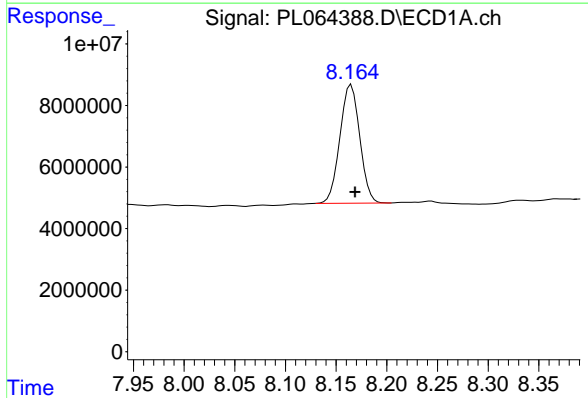
R.T.: 3.434 min
 Delta R.T.: -0.001 min
 Response: 58841716
 Conc: 19.62 ng/ml

Instrument :
 ECD_L
 ClientSampleId :
 PB134299BL



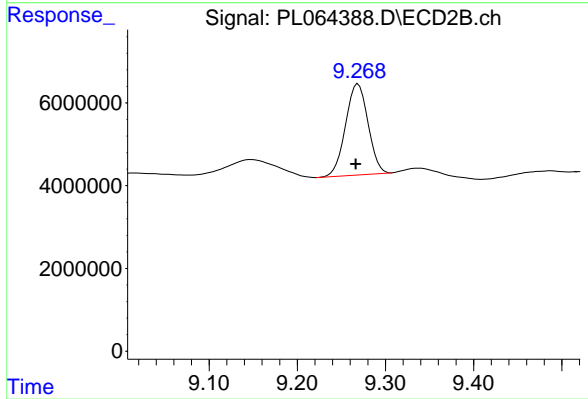
#1 Tetrachloro-m-xylene

R.T.: 4.107 min
 Delta R.T.: 0.001 min
 Response: 47340097
 Conc: 18.52 ng/ml



#28 Decachlorobiphenyl

R.T.: 8.165 min
 Delta R.T.: -0.004 min
 Response: 52456237
 Conc: 17.19 ng/ml



#28 Decachlorobiphenyl

R.T.: 9.269 min
 Delta R.T.: 0.003 min
 Response: 38964262
 Conc: 16.42 ng/ml