

Data Path : Z:\pestpcbsrv\HPCHEM1\ECD_L\Data\PL012521\
 Data File : PL064403.D
 Signal(s) : Signal #1: ECD1A.ch Signal #2: ECD2B.ch
 Acq On : 25 Jan 2021 18:54
 Operator : AR\AJ
 Sample : M1225-06
 Misc :
 ALS Vial : 42 Sample Multiplier: 1

Instrument :
 ECD_L
ClientSampled :
 S-6

Manual Integrations
APPROVED
 Ankita
 1/26/2021 10:14:13 AM

Integration File signal 1: autoint1.e
 Integration File signal 2: autoint2.e
 Quant Time: Jan 26 02:05:54 2021
 Quant Method : Z:\pestpcbsrv\HPCHEM1\ECD_L\methods\PL011221.M
 Quant Title : GC Extractables
 QLast Update : Mon Jan 18 13:25:12 2021
 Response via : Initial Calibration
 Integrator: ChemStation

Volume Inj. : 1 µl
 Signal #1 Phase : ZB-MR2 Signal #2 Phase: ZB-MR1
 Signal #1 Info : 30M x 0.32mm x0.2 Signal #2 Info : 30M x 0.32mm x0.5µm

Compound	RT#1	RT#2	Resp#1	Resp#2	ng/ml	ng/ml

System Monitoring Compounds						
1) SA Tetrachlo...	3.434	4.107	65389917	53234071	21.808	20.823
28) SA Decachlor...	8.165	9.267	62166883	46833812	20.369	19.733
Target Compounds						
12) B 4,4'-DDE	5.583	6.481	8618735	4967378	2.447	1.865
17) MA 4,4'-DDT	6.335	7.279	4361124	2178460	1.461	0.962m#

(f)=RT Delta > 1/2 Window (#)=Amounts differ by > 25% (m)=manual int.

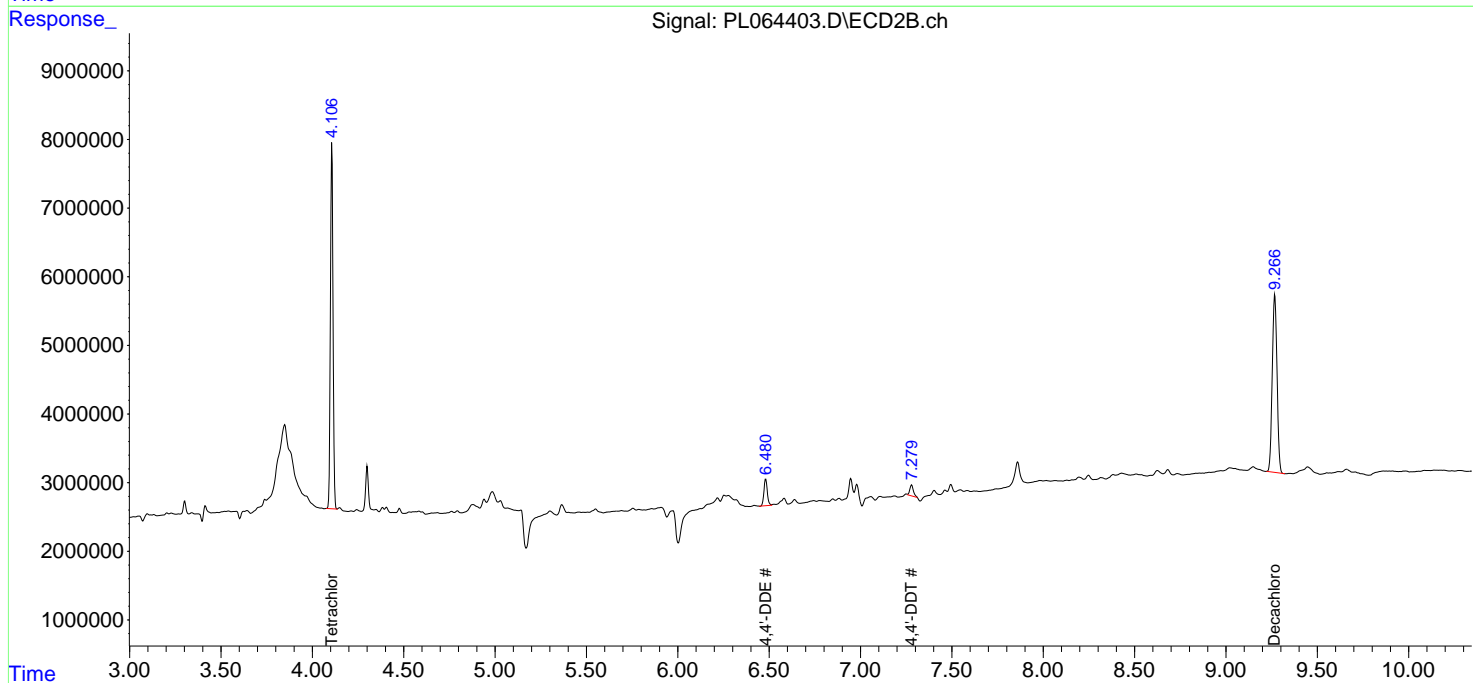
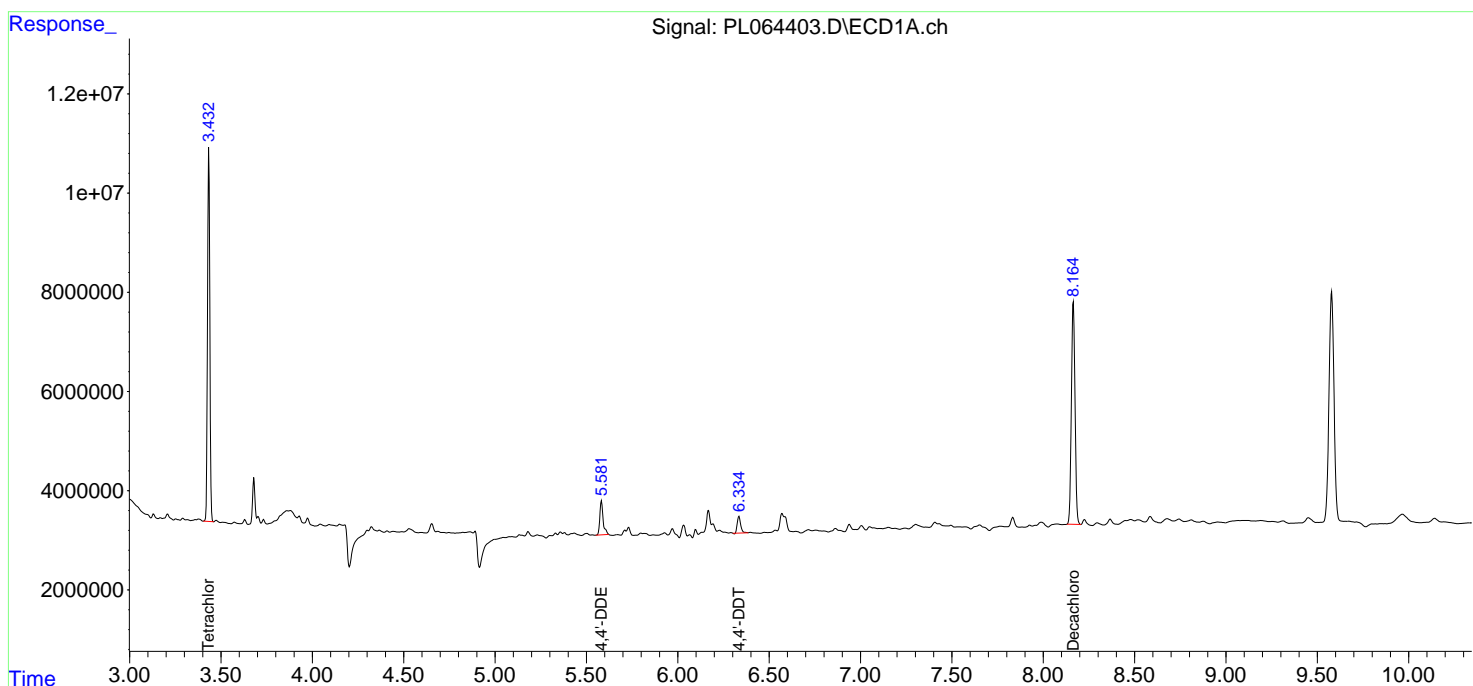
Data Path : Z:\pestpcbsrv\HPCHEM1\ECD_L\Data\PL012521\
 Data File : PL064403.D
 Signal(s) : Signal #1: ECD1A.ch Signal #2: ECD2B.ch
 Acq On : 25 Jan 2021 18:54
 Operator : AR\AJ
 Sample : M1225-06
 Misc :
 ALS Vial : 42 Sample Multiplier: 1

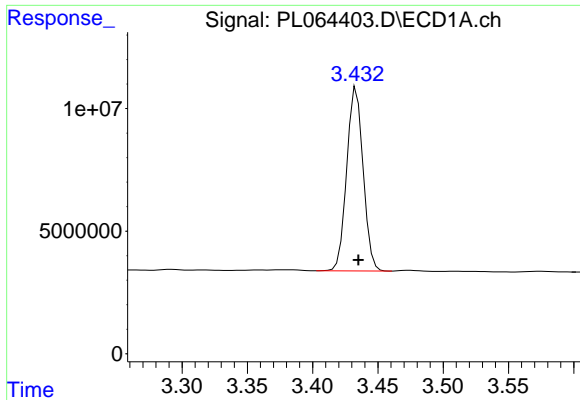
Instrument :
 ECD_L
 ClientSampled :
 S-6

Manual Integrations
APPROVED
 Ankita
 1/26/2021 10:14:13 AM

Integration File signal 1: autoint1.e
 Integration File signal 2: autoint2.e
 Quant Time: Jan 26 02:05:54 2021
 Quant Method : Z:\pestpcbsrv\HPCHEM1\ECD_L\methods\PL011221.M
 Quant Title : GC Extractables
 QLast Update : Mon Jan 18 13:25:12 2021
 Response via : Initial Calibration
 Integrator: ChemStation

Volume Inj. : 1 µl
 Signal #1 Phase : ZB-MR2 Signal #2 Phase: ZB-MR1
 Signal #1 Info : 30M x 0.32mm x0.2 Signal #2 Info : 30M x 0.32mm x0.5µm

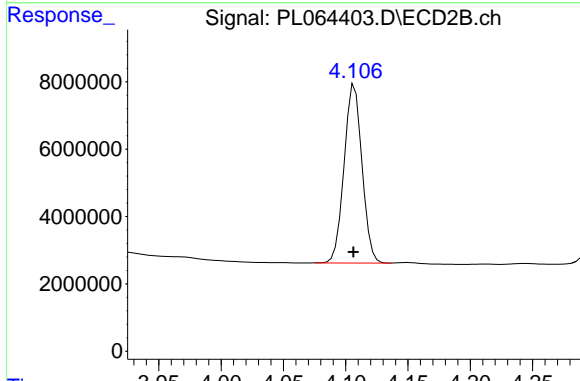




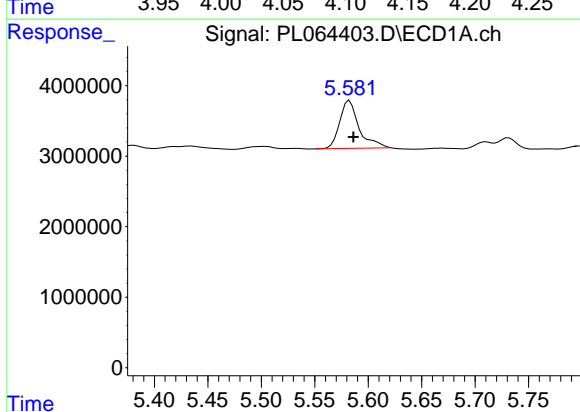
#1 Tetrachloro-m-xylene
 R.T.: 3.434 min
 Delta R.T.: -0.001 min
 Response: 65389917
 Conc: 21.81 ng/ml

Instrument :
 ECD_L
 ClientSampled :
 S-6

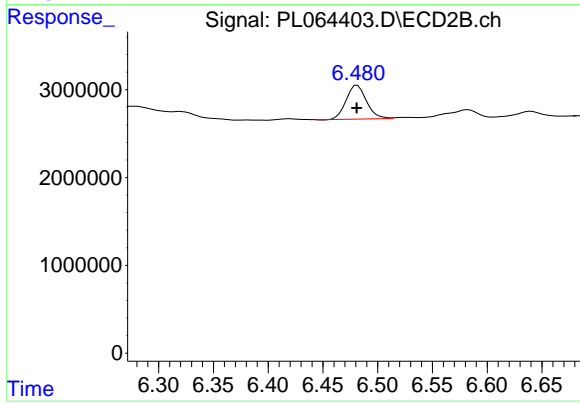
Manual Integrations
 APPROVED
 Ankita
 1/26/2021 10:14:13 AM



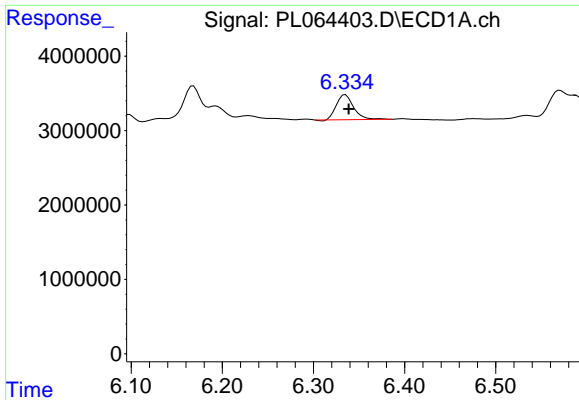
#1 Tetrachloro-m-xylene
 R.T.: 4.107 min
 Delta R.T.: 0.000 min
 Response: 53234071
 Conc: 20.82 ng/ml



#12 4,4'-DDE
 R.T.: 5.583 min
 Delta R.T.: -0.003 min
 Response: 8618735
 Conc: 2.45 ng/ml



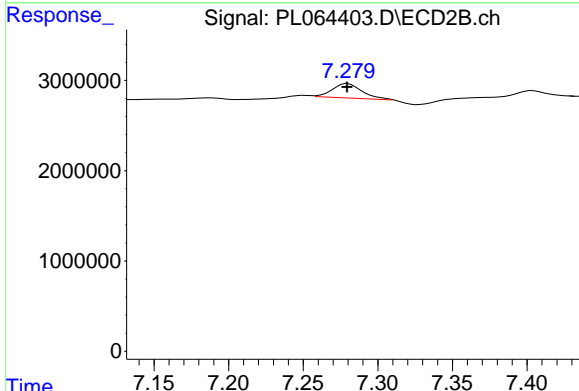
#12 4,4'-DDE
 R.T.: 6.481 min
 Delta R.T.: 0.000 min
 Response: 4967378
 Conc: 1.86 ng/ml



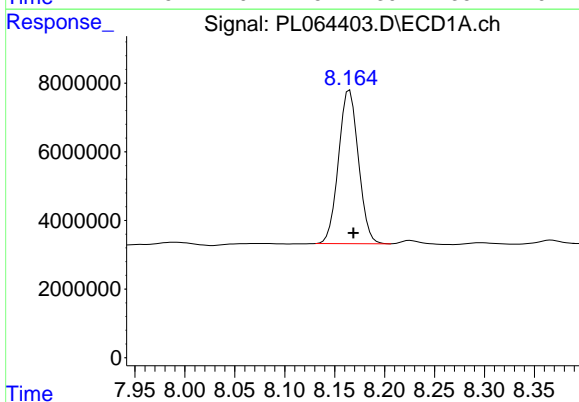
#17 4,4'-DDT
 R.T.: 6.335 min
 Delta R.T.: -0.004 min
 Response: 4361124
 Conc: 1.46 ng/ml

Instrument :
 ECD_L
 ClientSampled :
 S-6

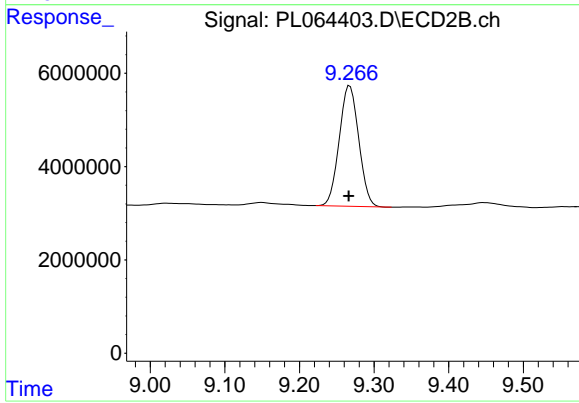
Manual Integrations
 APPROVED
 Ankita
 1/26/2021 10:14:13 AM



#17 4,4'-DDT
 R.T.: 7.279 min
 Delta R.T.: 0.000 min
 Response: 2178460
 Conc: 0.96 ng/ml m



#28 Decachlorobiphenyl
 R.T.: 8.165 min
 Delta R.T.: -0.004 min
 Response: 62166883
 Conc: 20.37 ng/ml



#28 Decachlorobiphenyl
 R.T.: 9.267 min
 Delta R.T.: 0.001 min
 Response: 46833812
 Conc: 19.73 ng/ml