

Data Path : Z:\pestpcbsrv\HPCHEM1\ECD_L\Data\PL012521\
 Data File : PL064408.D
 Signal(s) : Signal #1: ECD1A.ch Signal #2: ECD2B.ch
 Acq On : 25 Jan 2021 20:05
 Operator : AR\AJ
 Sample : PEM
 Misc :
 ALS Vial : 3 Sample Multiplier: 1

Instrument :
 ECD_L
 ClientSampled :
 PEM

Manual Integrations
 APPROVED

Ankita
 1/26/2021 10:14:17 AM

Integration File signal 1: autoint1.e
 Integration File signal 2: autoint2.e
 Quant Time: Jan 26 02:06:51 2021
 Quant Method : Z:\pestpcbsrv\HPCHEM1\ECD_L\methods\PL011221.M
 Quant Title : GC Extractables
 QLast Update : Mon Jan 18 13:25:12 2021
 Response via : Initial Calibration
 Integrator: ChemStation

Volume Inj. : 1 µl
 Signal #1 Phase : ZB-MR2 Signal #2 Phase: ZB-MR1
 Signal #1 Info : 30M x 0.32mm x0.2 Signal #2 Info : 30M x 0.32mm x0.5µm

Compound	RT#1	RT#2	Resp#1	Resp#2	ng/ml	ng/ml

System Monitoring Compounds						
1) SA Tetrachlo...	3.433	4.107	60308689	48264178	20.113	18.879
28) SA Decachlor...	8.164	9.269	64188532	48643294	21.031	20.495
Target Compounds						
2) A alpha-BHC	3.867	4.509	44717356	30293471	8.990	8.289
3) MA gamma-BHC...	4.147	4.800	41344518	28914051	8.917	8.208
6) B beta-BHC	4.396	4.977	23321044	20306399	10.128	9.536
12) B 4,4'-DDE	5.582	6.482	885656	475286	0.251m	0.178m#
14) MA Endrin	5.965	6.863	178.3E6	114.6E6	51.345	50.195
16) A 4,4'-DDD	6.096	6.981	2514002	2634320	0.862	1.188 #
17) MA 4,4'-DDT	6.336	7.281	296.6E6	211.1E6	99.339	93.190
18) B Endrin al...	6.404	7.201	866524	250338	0.302m	0.115m#
20) A Methoxychlor	6.883	7.741	367.3E6	292.1E6	219.765	216.163
21) B Endrin ke...	7.104	7.904	3399892	1859972	0.947	0.746

(f)=RT Delta > 1/2 Window (#)=Amounts differ by > 25% (m)=manual int.

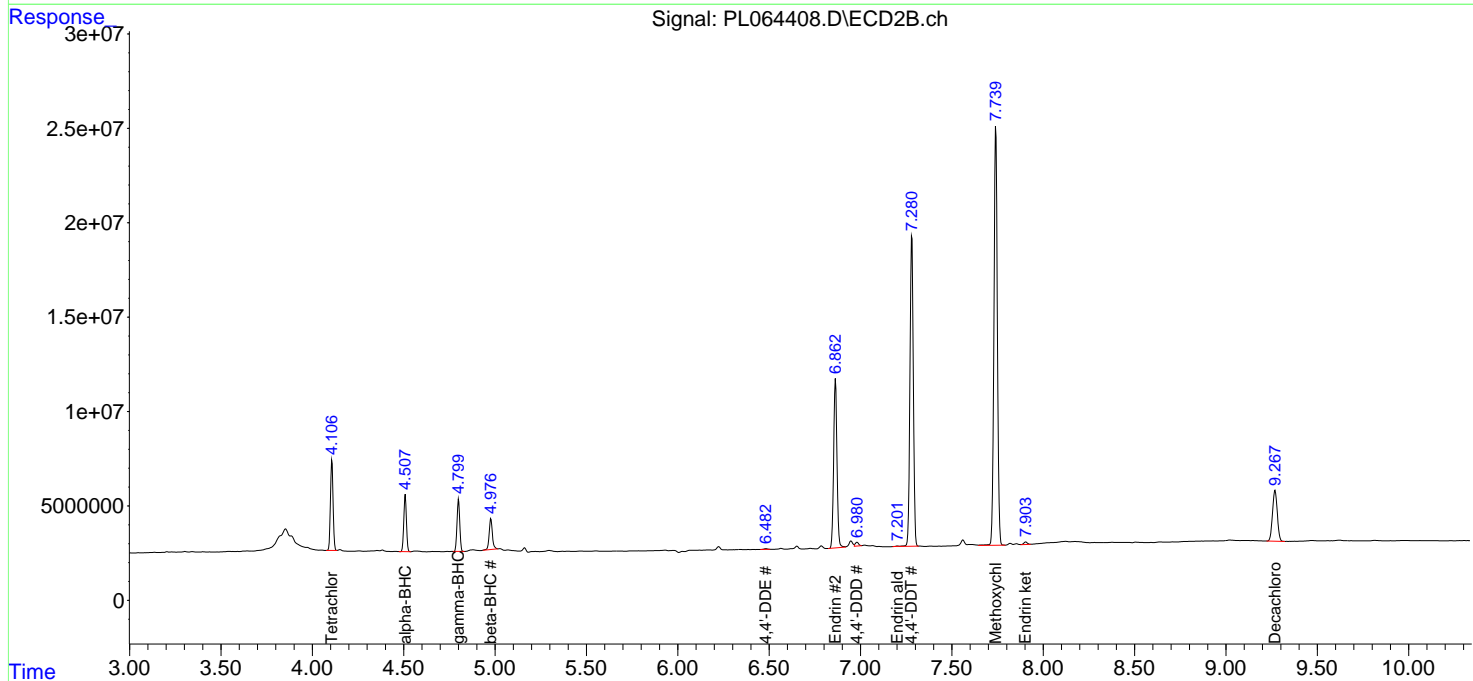
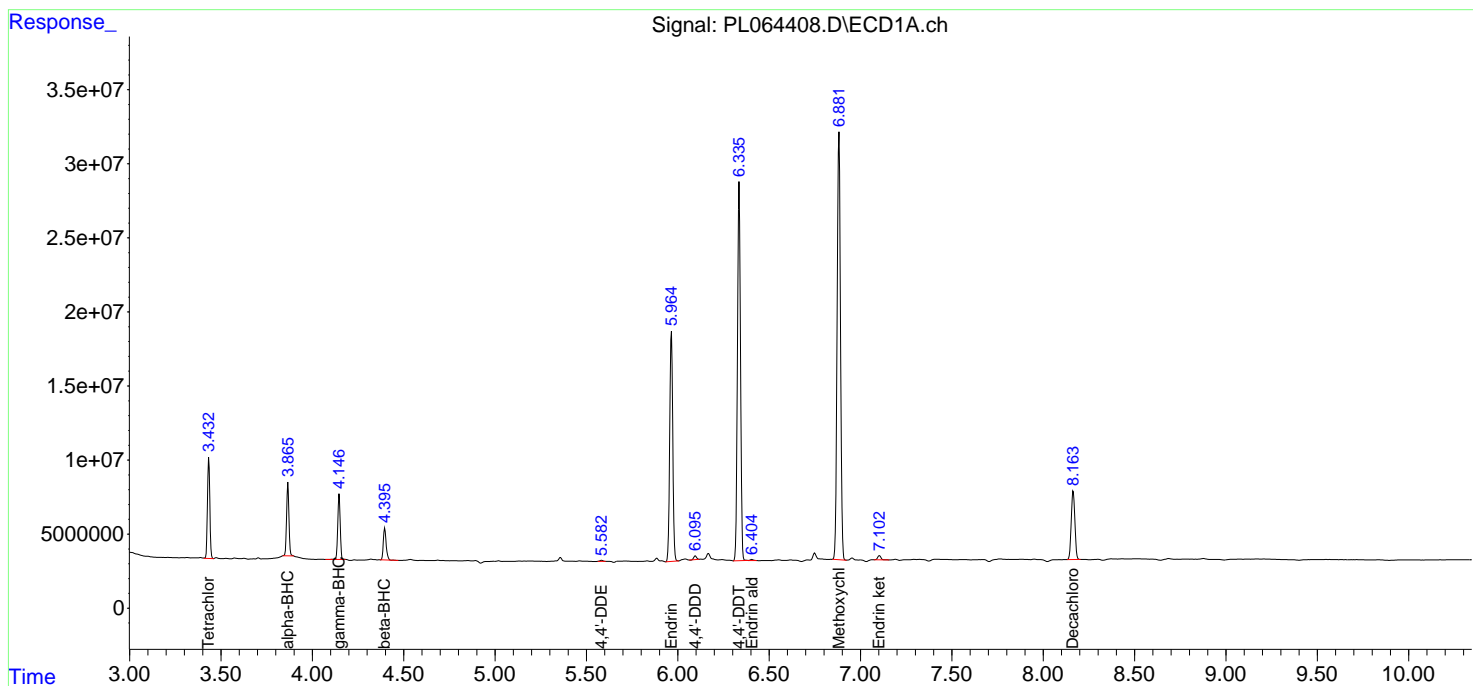
Data Path : Z:\pestpcbsrv\HPCHEM1\ECD_L\Data\PL012521\
 Data File : PL064408.D
 Signal(s) : Signal #1: ECD1A.ch Signal #2: ECD2B.ch
 Acq On : 25 Jan 2021 20:05
 Operator : AR\AJ
 Sample : PEM
 Misc :
 ALS Vial : 3 Sample Multiplier: 1

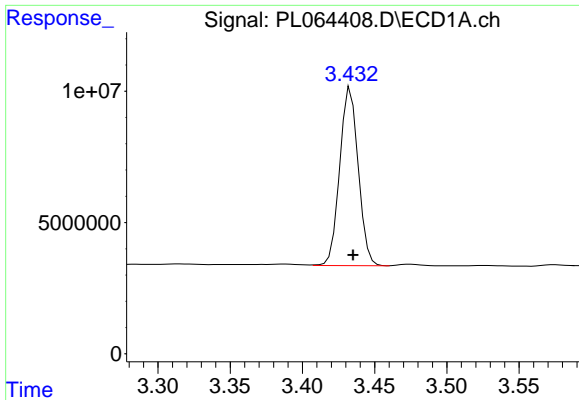
Instrument :
 ECD_L
 Client Sampled :
 PEM

Manual Integrations
APPROVED
 Ankita
 1/26/2021 10:14:17 AM

Integration File signal 1: autoint1.e
 Integration File signal 2: autoint2.e
 Quant Time: Jan 26 02:06:51 2021
 Quant Method : Z:\pestpcbsrv\HPCHEM1\ECD_L\methods\PL011221.M
 Quant Title : GC Extractables
 QLast Update : Mon Jan 18 13:25:12 2021
 Response via : Initial Calibration
 Integrator: ChemStation

Volume Inj. : 1 µl
 Signal #1 Phase : ZB-MR2 Signal #2 Phase: ZB-MR1
 Signal #1 Info : 30M x 0.32mm x0.2 Signal #2 Info : 30M x 0.32mm x0.5µm

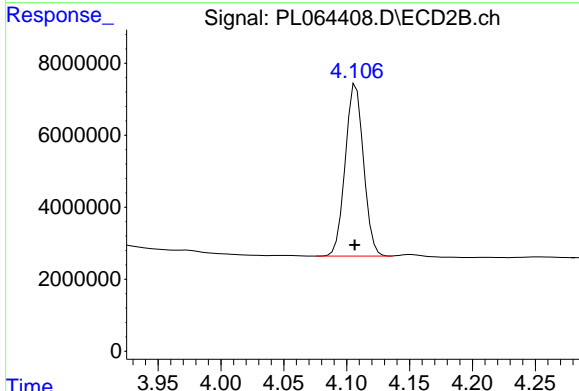




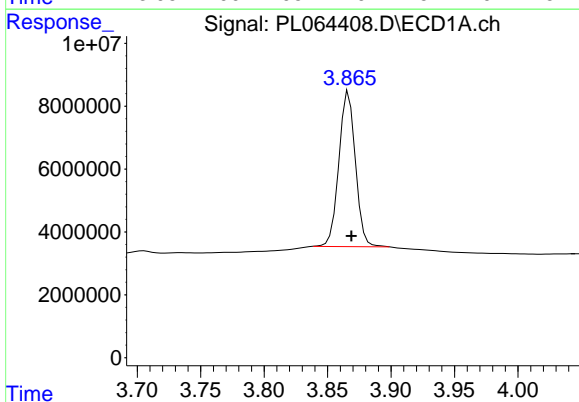
#1 Tetrachloro-m-xylene
 R.T.: 3.433 min
 Delta R.T.: -0.002 min
 Response: 60308689
 Conc: 20.11 ng/ml

Instrument :
 ECD_L
 ClientSampled :
 PEM

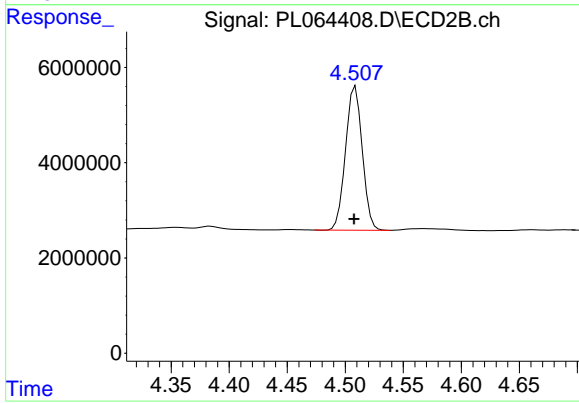
Manual Integrations
 APPROVED
 Ankita
 1/26/2021 10:14:17 AM



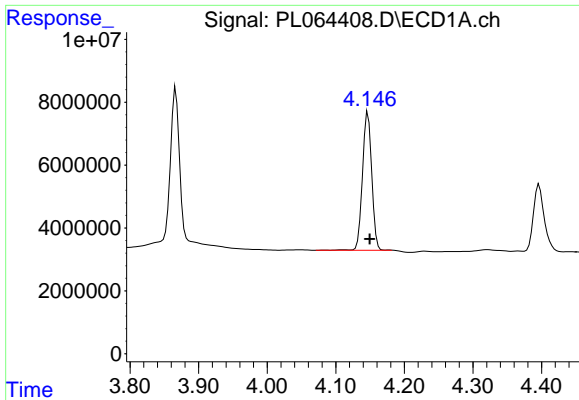
#1 Tetrachloro-m-xylene
 R.T.: 4.107 min
 Delta R.T.: 0.001 min
 Response: 48264178
 Conc: 18.88 ng/ml



#2 alpha-BHC
 R.T.: 3.867 min
 Delta R.T.: -0.002 min
 Response: 44717356
 Conc: 8.99 ng/ml



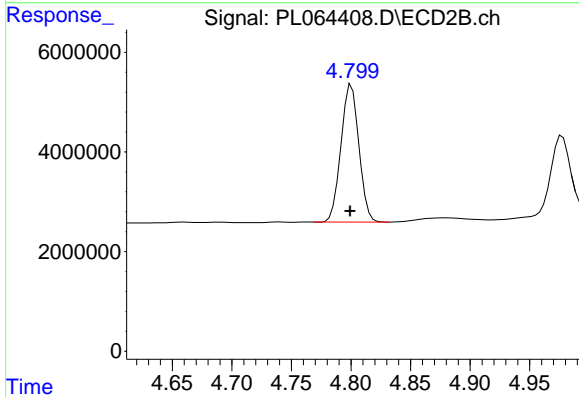
#2 alpha-BHC
 R.T.: 4.509 min
 Delta R.T.: 0.001 min
 Response: 30293471
 Conc: 8.29 ng/ml



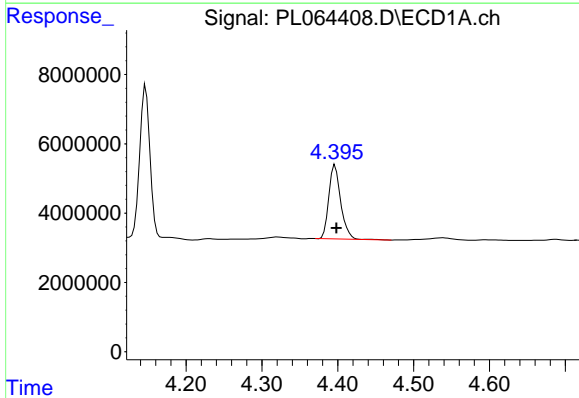
#3 gamma-BHC (Lindane)
 R.T.: 4.147 min
 Delta R.T.: -0.003 min
 Response: 41344518
 Conc: 8.92 ng/ml

Instrument :
 ECD_L
 ClientSampled :
 PEM

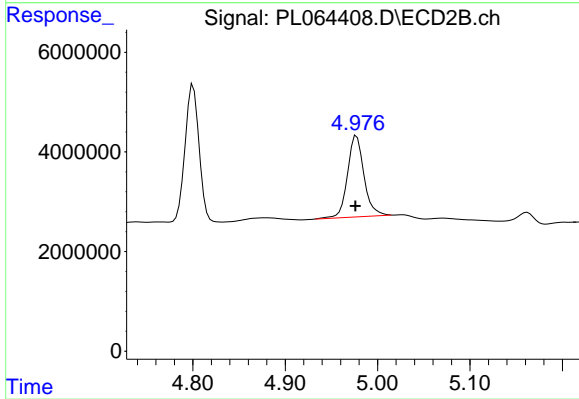
Manual Integrations
 APPROVED
 Ankita
 1/26/2021 10:14:17 AM



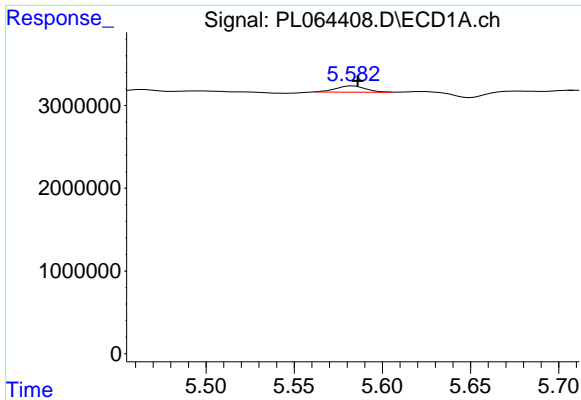
#3 gamma-BHC (Lindane)
 R.T.: 4.800 min
 Delta R.T.: 0.001 min
 Response: 28914051
 Conc: 8.21 ng/ml



#6 beta-BHC
 R.T.: 4.396 min
 Delta R.T.: -0.002 min
 Response: 23321044
 Conc: 10.13 ng/ml



#6 beta-BHC
 R.T.: 4.977 min
 Delta R.T.: 0.001 min
 Response: 20306399
 Conc: 9.54 ng/ml



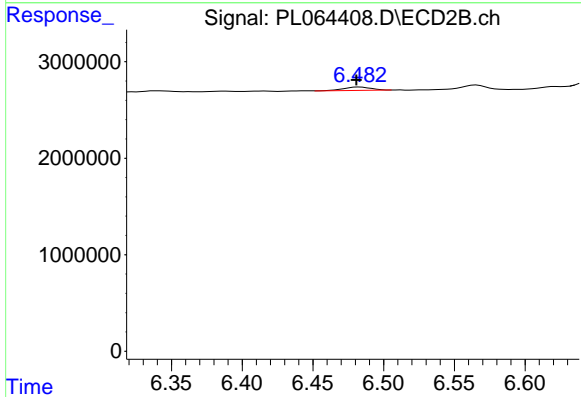
#12 4,4'-DDE

R.T.: 5.582 min
 Delta R.T.: -0.004 min
 Response: 885656
 Conc: 0.25 ng/ml m

Instrument :
 ECD_L
 ClientSampled :
 PEM

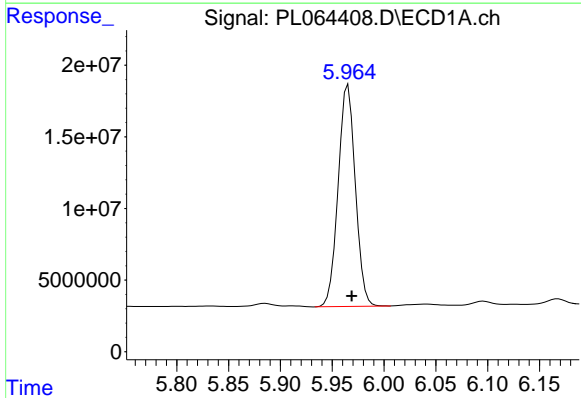
Manual Integrations
 APPROVED

Ankita
 1/26/2021 10:14:17 AM



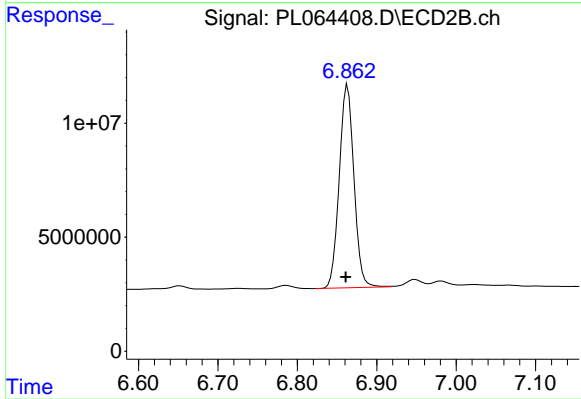
#12 4,4'-DDE

R.T.: 6.482 min
 Delta R.T.: 0.000 min
 Response: 475286
 Conc: 0.18 ng/ml m



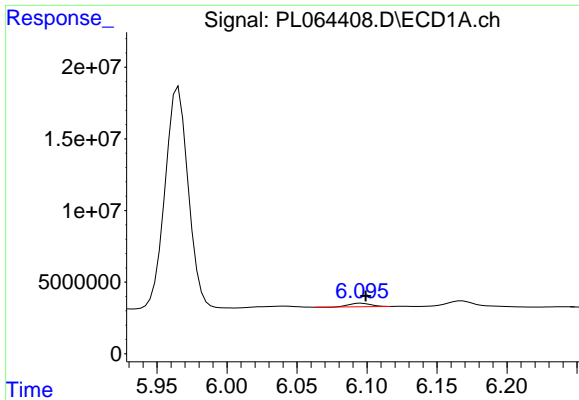
#14 Endrin

R.T.: 5.965 min
 Delta R.T.: -0.003 min
 Response: 178291197
 Conc: 51.35 ng/ml



#14 Endrin

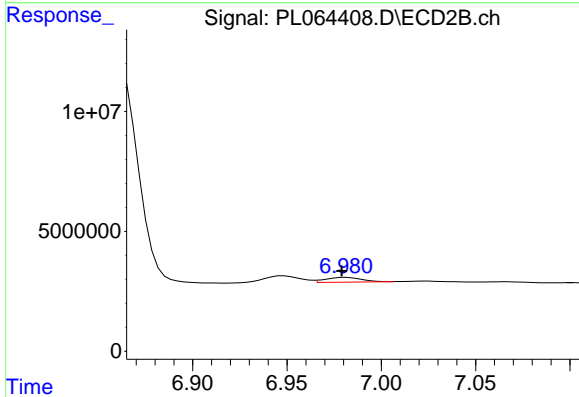
R.T.: 6.863 min
 Delta R.T.: 0.002 min
 Response: 114621864
 Conc: 50.20 ng/ml



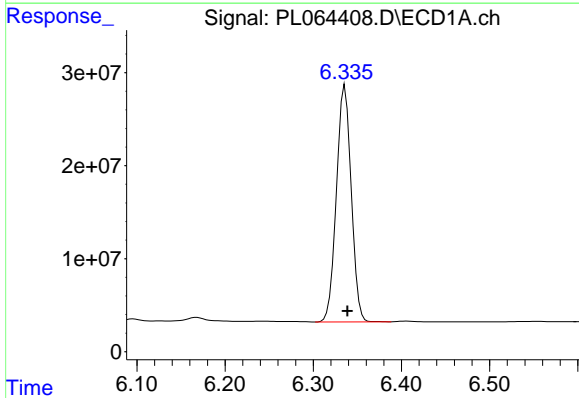
#16 4,4'-DDD
 R.T.: 6.096 min
 Delta R.T.: -0.003 min
 Response: 2514002
 Conc: 0.86 ng/ml

Instrument :
 ECD_L
 ClientSampled :
 PEM

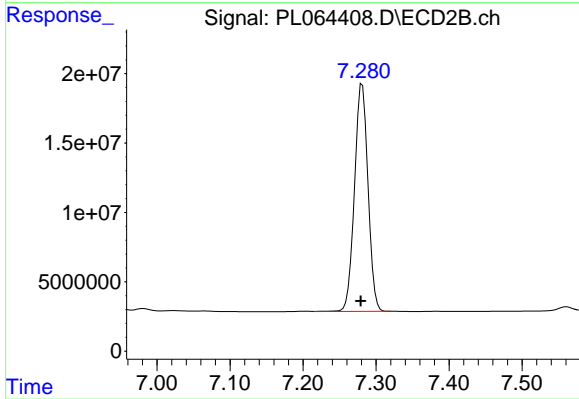
Manual Integrations
 APPROVED
 Ankita
 1/26/2021 10:14:17 AM



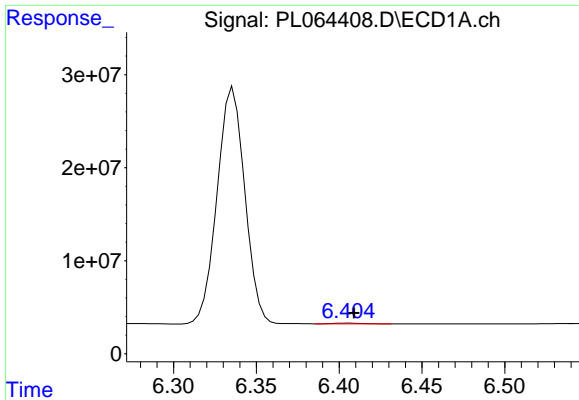
#16 4,4'-DDD
 R.T.: 6.981 min
 Delta R.T.: 0.002 min
 Response: 2634320
 Conc: 1.19 ng/ml



#17 4,4'-DDT
 R.T.: 6.336 min
 Delta R.T.: -0.003 min
 Response: 296562590
 Conc: 99.34 ng/ml



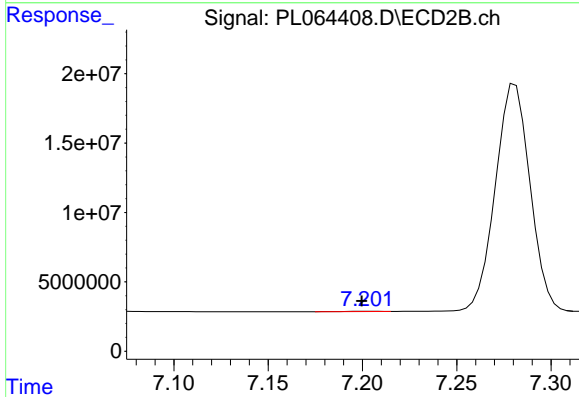
#17 4,4'-DDT
 R.T.: 7.281 min
 Delta R.T.: 0.002 min
 Response: 211072008
 Conc: 93.19 ng/ml



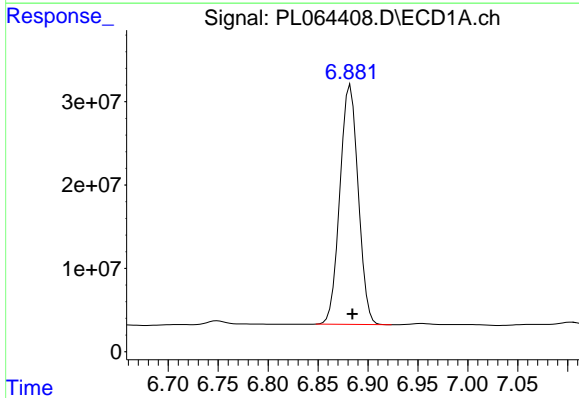
#18 Endrin aldehyde
 R.T.: 6.404 min
 Delta R.T.: -0.005 min
 Response: 866524
 Conc: 0.30 ng/ml m

Instrument :
 ECD_L
 ClientSampled :
 PEM

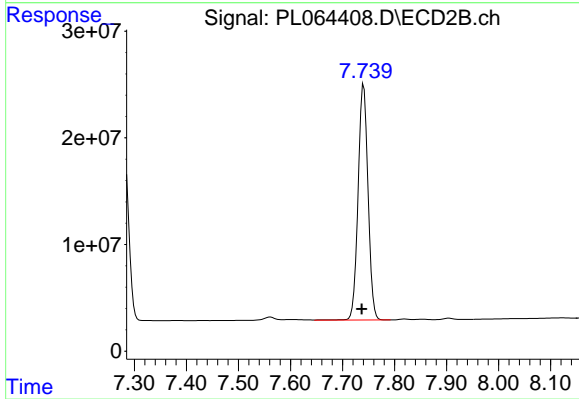
Manual Integrations
 APPROVED
 Ankita
 1/26/2021 10:14:17 AM



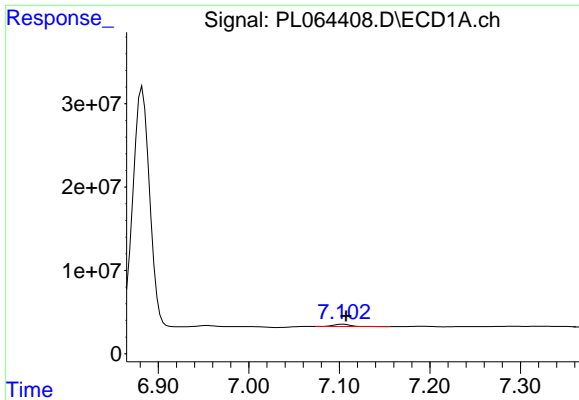
#18 Endrin aldehyde
 R.T.: 7.201 min
 Delta R.T.: 0.001 min
 Response: 250338
 Conc: 0.12 ng/ml m



#20 Methoxychlor
 R.T.: 6.883 min
 Delta R.T.: -0.002 min
 Response: 367258546
 Conc: 219.76 ng/ml



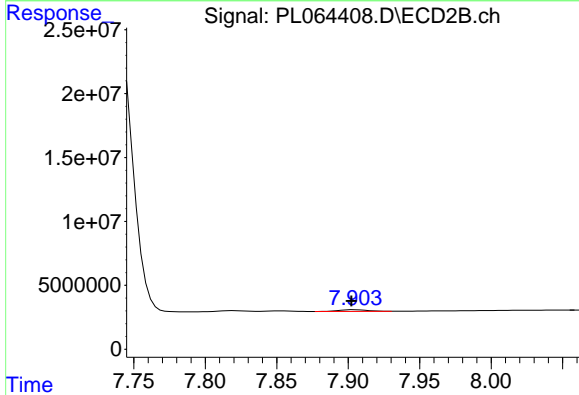
#20 Methoxychlor
 R.T.: 7.741 min
 Delta R.T.: 0.004 min
 Response: 292069896
 Conc: 216.16 ng/ml



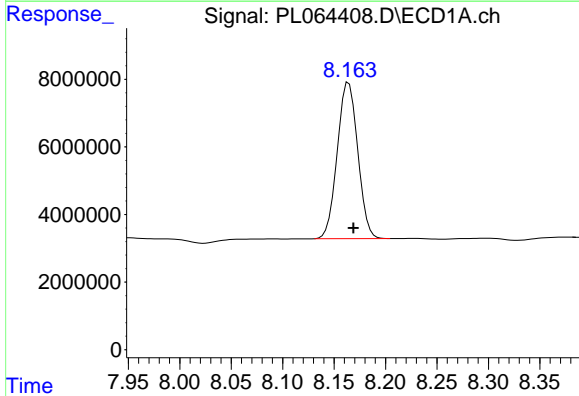
#21 Endrin ketone
 R.T.: 7.104 min
 Delta R.T.: -0.004 min
 Response: 3399892
 Conc: 0.95 ng/ml

Instrument :
 ECD_L
 ClientSampled :
 PEM

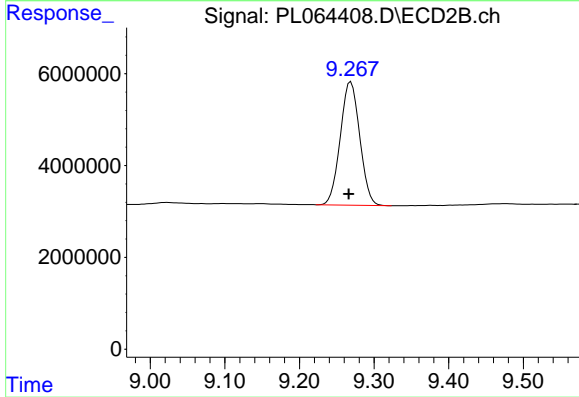
Manual Integrations
APPROVED
 Ankita
 1/26/2021 10:14:17 AM



#21 Endrin ketone
 R.T.: 7.904 min
 Delta R.T.: 0.002 min
 Response: 1859972
 Conc: 0.75 ng/ml



#28 Decachlorobiphenyl
 R.T.: 8.164 min
 Delta R.T.: -0.005 min
 Response: 64188532
 Conc: 21.03 ng/ml



#28 Decachlorobiphenyl
 R.T.: 9.269 min
 Delta R.T.: 0.003 min
 Response: 48643294
 Conc: 20.50 ng/ml