

Data Path : Z:\pestpcbsrv\HPCHEM1\ECD_L\Data\PL012522\
 Data File : PL072229.D
 Signal(s) : Signal #1: ECD1A.ch Signal #2: ECD2B.ch
 Acq On : 25 Jan 2022 13:46
 Operator : AR\AJ
 Sample : N1097-16MSD
 Misc :
 ALS Vial : 12 Sample Multiplier: 1

Instrument :
 ECD_L
 ClientSampleId :
 TP-3DMSD

Integration File signal 1: autoint1.e
 Integration File signal 2: autoint2.e
 Quant Time: Jan 26 00:39:02 2022
 Quant Method : Z:\pestpcbsrv\HPCHEM1\ECD_L\methods\PL011722.M
 Quant Title : GC Extractables
 QLast Update : Tue Jan 18 10:53:59 2022
 Response via : Initial Calibration
 Integrator: ChemStation

Volume Inj. : 1 µl
 Signal #1 Phase : ZB-MR2 Signal #2 Phase: ZB-MR1
 Signal #1 Info : 30M x 0.32mm x0.2 Signal #2 Info : 30M x 0.32mm x0.5µm

	Compound	RT#1	RT#2	Resp#1	Resp#2	ng/ml	ng/ml

System Monitoring Compounds							
1)	SA Tetrachlo...	4.556	5.492	11977411	30710604	21.574	18.909
28)	SA Decachlor...	10.320	11.386	17564647	36510089	19.770	22.628
Target Compounds							
2)	A alpha-BHC	5.263	6.074	37021735	110.8E6	47.880	45.935
3)	MA gamma-BHC...	5.686	6.470	37393994	97694496	49.593	43.414
4)	MA Heptachlor	6.092	7.116	40939239	102.7E6	47.455	44.283
5)	MB Aldrin	6.417	7.486	37260057	97121545	47.186	43.922
6)	B beta-BHC	6.071	6.728	15666516	39498454	47.393	39.893
7)	B delta-BHC	6.330	6.995	38194559	105.7E6	48.217	42.953
8)	B Heptachlo...	6.994	7.954	35972543	82442117	47.256	41.174
9)	A Endosulfan I	7.397	8.359	31270607	77678525	43.999	42.915
10)	B gamma-Chl...	7.271	8.223	40268367	97584219	51.250	48.289
11)	B alpha-Chl...	7.341	8.304	37579858	92788791	47.903	46.797
12)	B 4,4'-DDE	7.556	8.493	39191651	72337582	54.283	38.249 #
13)	MA Dieldrin	7.683	8.648	39210630	84090946	51.755	42.803
14)	MA Endrin	7.973	8.887	35782542	67807342	51.069	40.897
15)	B Endosulfa...	8.287	9.123	34868915	77073828	46.897	44.943
16)	A 4,4'-DDD	8.142	9.034	28423180	69969351	48.485	48.937
17)	MA 4,4'-DDT	8.403	9.351	44861875	105.1E6	67.556	66.510
18)	B Endrin al...	8.475	9.258	26849884	55545656	47.126	44.745
19)	B Endosulfa...	8.707	9.496	33632614	68397857	45.872	43.812
20)	A Methoxychlor	8.999	9.839	24919041	38173337	59.064	46.084
21)	B Endrin ke...	9.224	9.993	35785358	76197919	42.975	46.041
22)	Mirex	9.406	10.456	35058629	56846322	47.474	45.558
23)	Chlordane-1	5.882	6.876	966859	196243	46.872	3.007 #
24)	Chlordane-2	6.589	7.486f	640176	97121545	23.247	1389.549 #
25)	Chlordane-3	7.271	8.223	40268367	97584219	526.324	351.234 #
26)	Chlordane-4	7.341	8.304	37579858	92788791	455.492	279.425 #
27)	Chlordane-5	8.287	9.187	34868915	515861	1196.453	8.454 #

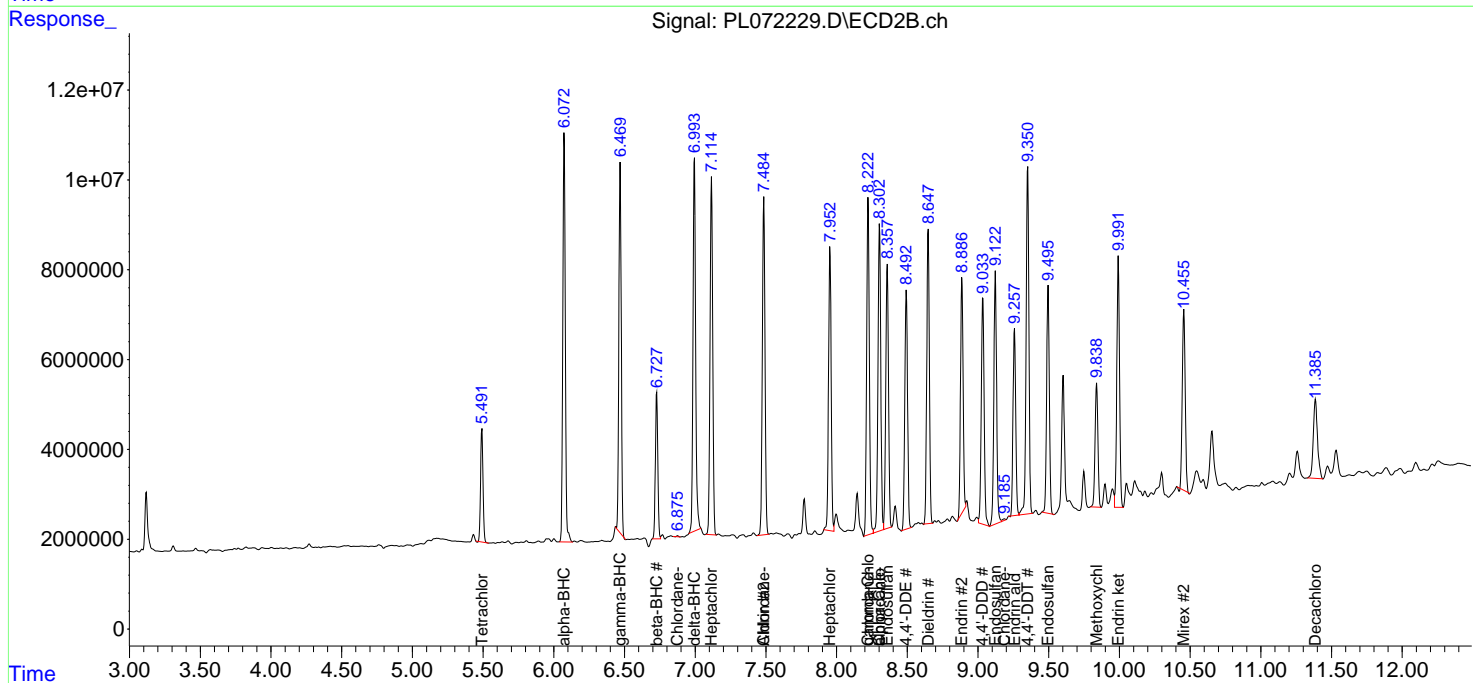
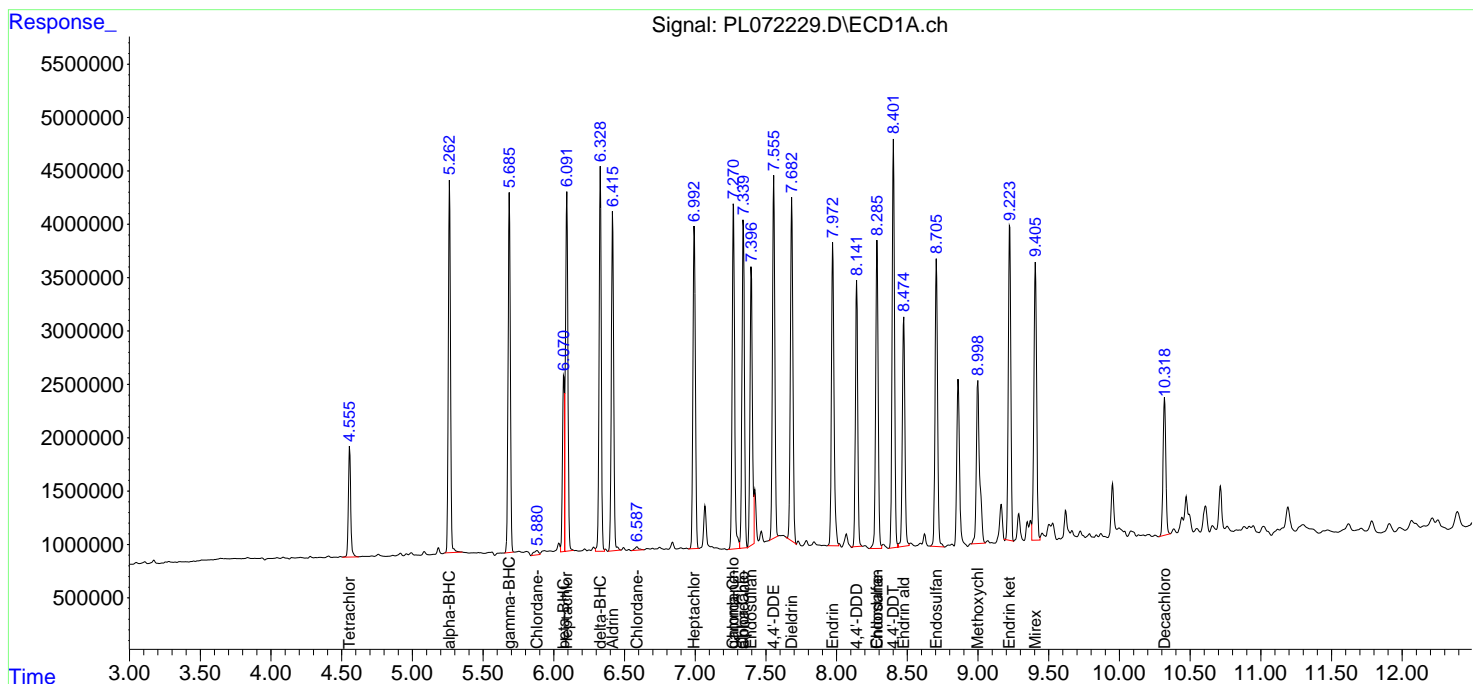
(f)=RT Delta > 1/2 Window (#)=Amounts differ by > 25% (m)=manual int.

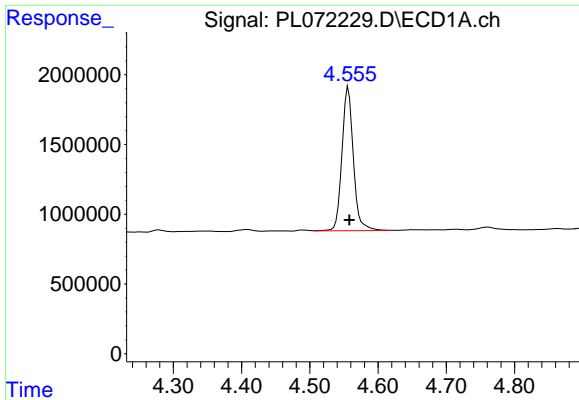
Data Path : Z:\pestpcbsrv\HPCHEM1\ECD_L\Data\PL012522\
 Data File : PL072229.D
 Signal(s) : Signal #1: ECD1A.ch Signal #2: ECD2B.ch
 Acq On : 25 Jan 2022 13:46
 Operator : AR\AJ
 Sample : N1097-16MSD
 Misc :
 ALS Vial : 12 Sample Multiplier: 1

Instrument :
 ECD_L
 ClientSampleId :
 TP-3DMSD

Integration File signal 1: autoint1.e
 Integration File signal 2: autoint2.e
 Quant Time: Jan 26 00:39:02 2022
 Quant Method : Z:\pestpcbsrv\HPCHEM1\ECD_L\methods\PL011722.M
 Quant Title : GC Extractables
 QLast Update : Tue Jan 18 10:53:59 2022
 Response via : Initial Calibration
 Integrator: ChemStation

Volume Inj. : 1 µl
 Signal #1 Phase : ZB-MR2 Signal #2 Phase: ZB-MR1
 Signal #1 Info : 30M x 0.32mm x0.2 Signal #2 Info : 30M x 0.32mm x0.5µm

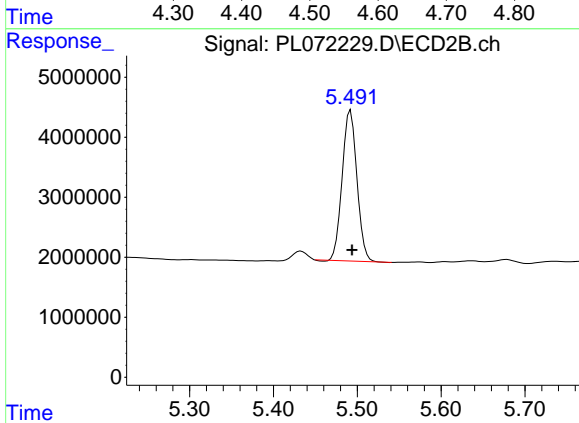




#1 Tetrachloro-m-xylene

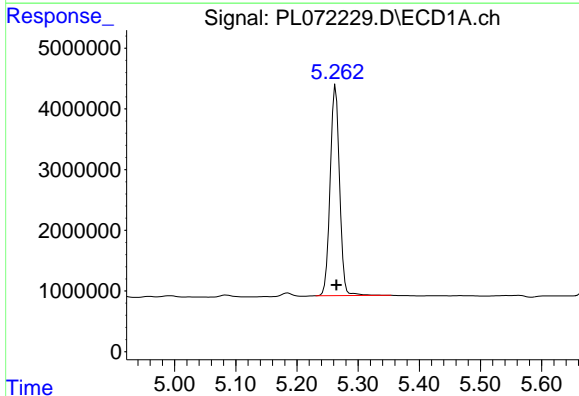
R.T.: 4.556 min
Delta R.T.: -0.002 min
Response: 11977411
Conc: 21.57 ng/ml

Instrument :
ECD_L
ClientSampleId :
TP-3DMSD



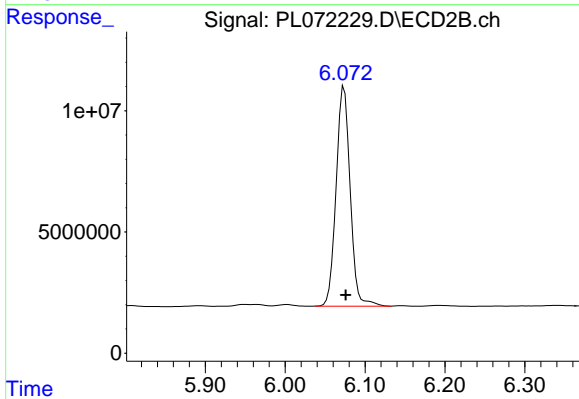
#1 Tetrachloro-m-xylene

R.T.: 5.492 min
Delta R.T.: -0.002 min
Response: 30710604
Conc: 18.91 ng/ml



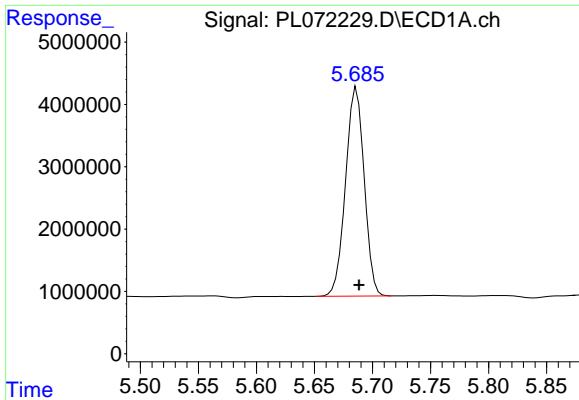
#2 alpha-BHC

R.T.: 5.263 min
Delta R.T.: -0.001 min
Response: 37021735
Conc: 47.88 ng/ml



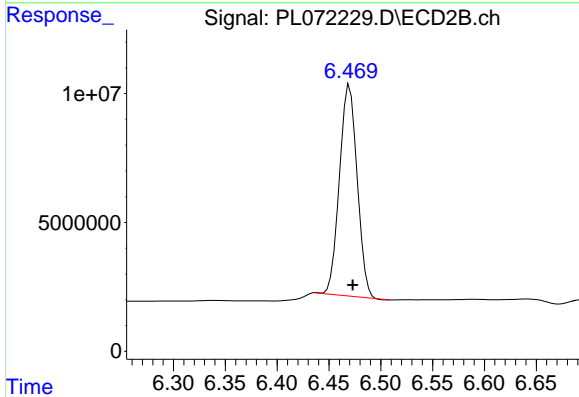
#2 alpha-BHC

R.T.: 6.074 min
Delta R.T.: -0.002 min
Response: 110835328
Conc: 45.94 ng/ml

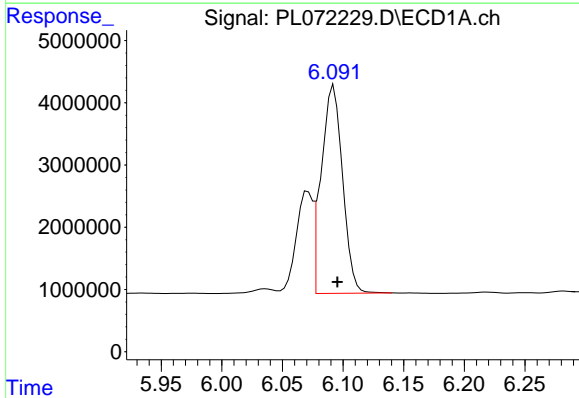


#3 gamma-BHC (Lindane)
 R.T.: 5.686 min
 Delta R.T.: -0.002 min
 Response: 37393994
 Conc: 49.59 ng/ml

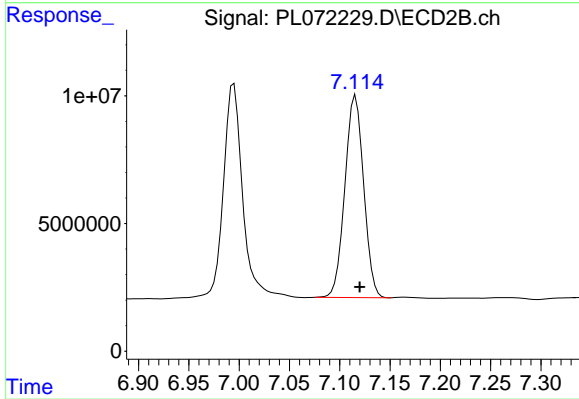
Instrument :
 ECD_L
 ClientSampleId :
 TP-3DMSD



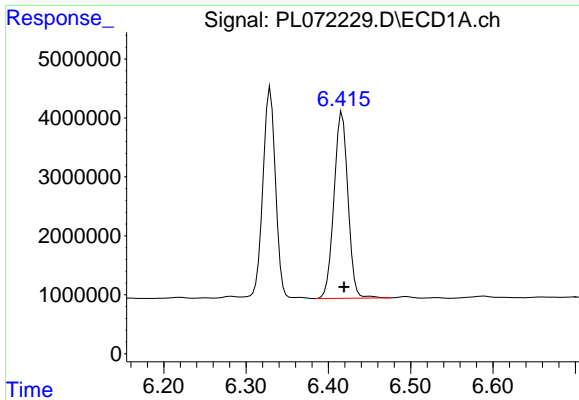
#3 gamma-BHC (Lindane)
 R.T.: 6.470 min
 Delta R.T.: -0.003 min
 Response: 97694496
 Conc: 43.41 ng/ml



#4 Heptachlor
 R.T.: 6.092 min
 Delta R.T.: -0.003 min
 Response: 40939239
 Conc: 47.46 ng/ml



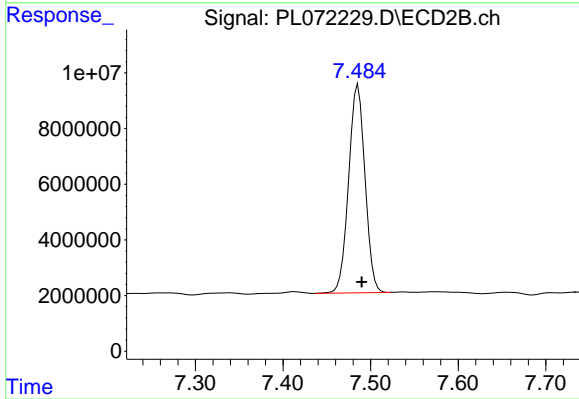
#4 Heptachlor
 R.T.: 7.116 min
 Delta R.T.: -0.004 min
 Response: 102669693
 Conc: 44.28 ng/ml



#5 Aldrin

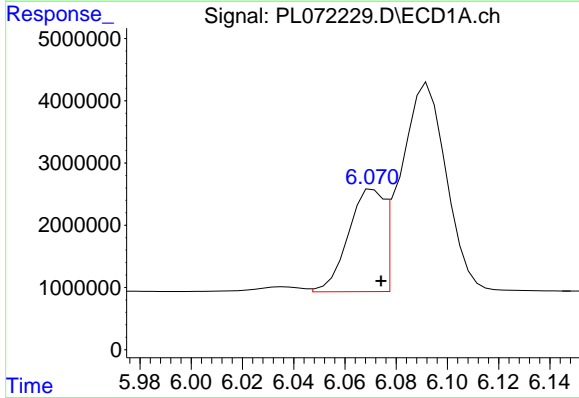
R.T.: 6.417 min
 Delta R.T.: -0.003 min
 Response: 37260057
 Conc: 47.19 ng/ml

Instrument :
 ECD_L
 ClientSampleId :
 TP-3DMSD



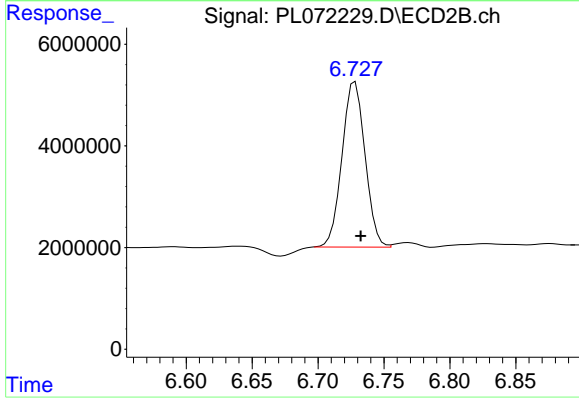
#5 Aldrin

R.T.: 7.486 min
 Delta R.T.: -0.004 min
 Response: 97121545
 Conc: 43.92 ng/ml



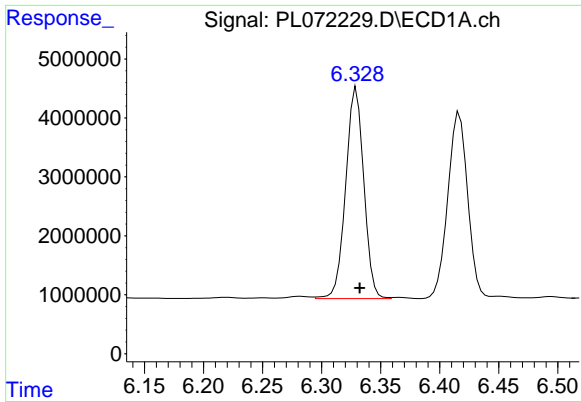
#6 beta-BHC

R.T.: 6.071 min
 Delta R.T.: -0.003 min
 Response: 15666516
 Conc: 47.39 ng/ml



#6 beta-BHC

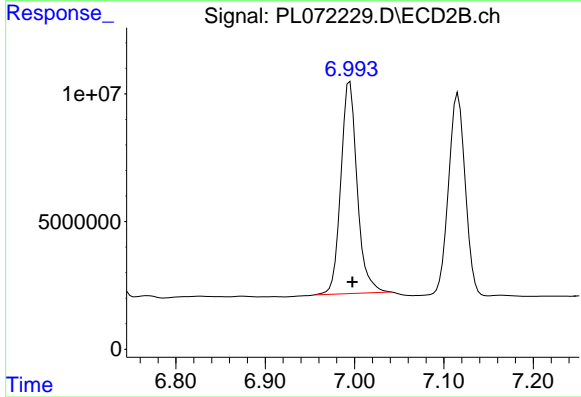
R.T.: 6.728 min
 Delta R.T.: -0.004 min
 Response: 39498454
 Conc: 39.89 ng/ml



#7 delta-BHC

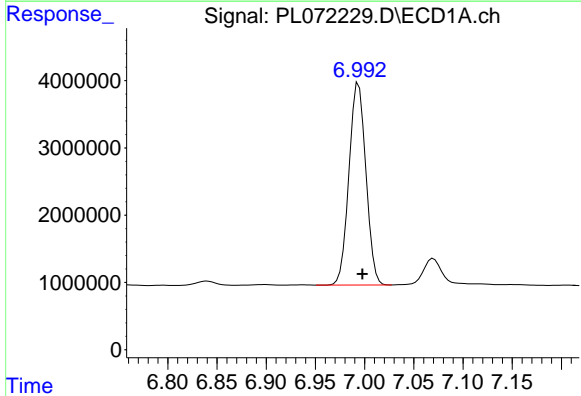
R.T.: 6.330 min
 Delta R.T.: -0.003 min
 Response: 38194559
 Conc: 48.22 ng/ml

Instrument :
 ECD_L
 ClientSampleId :
 TP-3DMSD



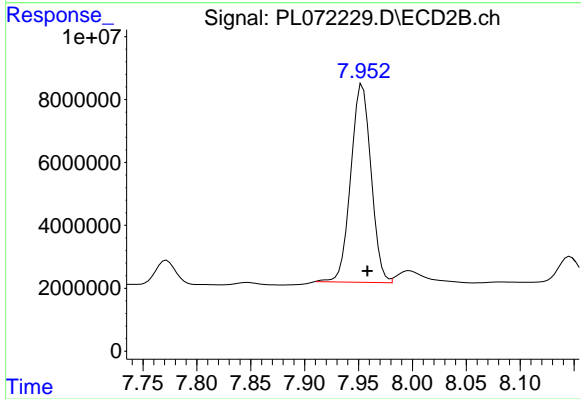
#7 delta-BHC

R.T.: 6.995 min
 Delta R.T.: -0.003 min
 Response: 105678331
 Conc: 42.95 ng/ml



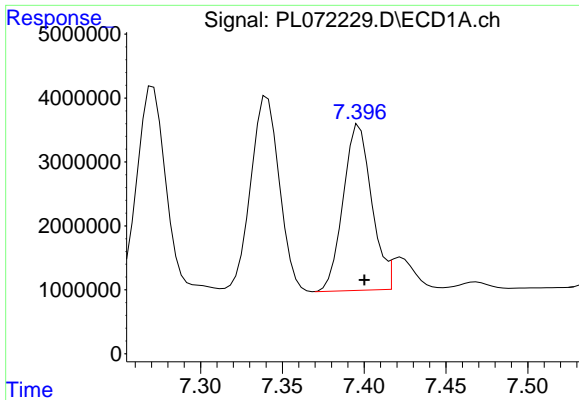
#8 Heptachlor epoxide

R.T.: 6.994 min
 Delta R.T.: -0.004 min
 Response: 35972543
 Conc: 47.26 ng/ml



#8 Heptachlor epoxide

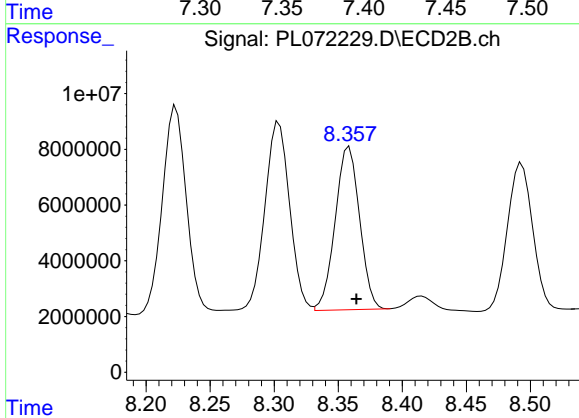
R.T.: 7.954 min
 Delta R.T.: -0.004 min
 Response: 82442117
 Conc: 41.17 ng/ml



#9 Endosulfan I

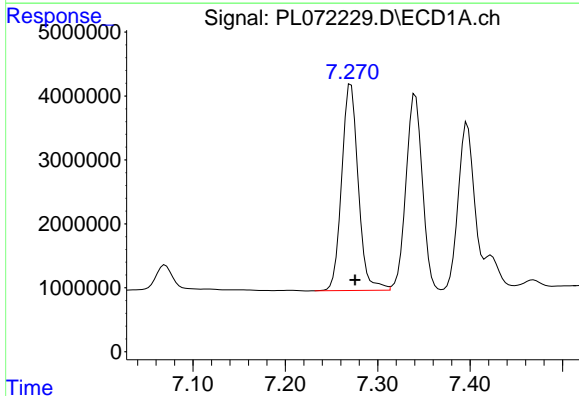
R.T.: 7.397 min
 Delta R.T.: -0.003 min
 Response: 31270607
 Conc: 44.00 ng/ml

Instrument :
 ECD_L
 ClientSampleId :
 TP-3DMSD



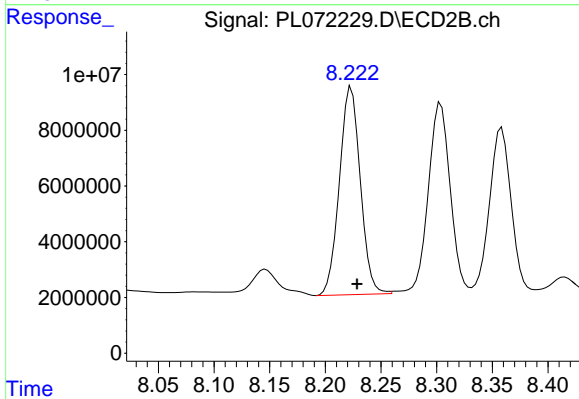
#9 Endosulfan I

R.T.: 8.359 min
 Delta R.T.: -0.006 min
 Response: 77678525
 Conc: 42.91 ng/ml



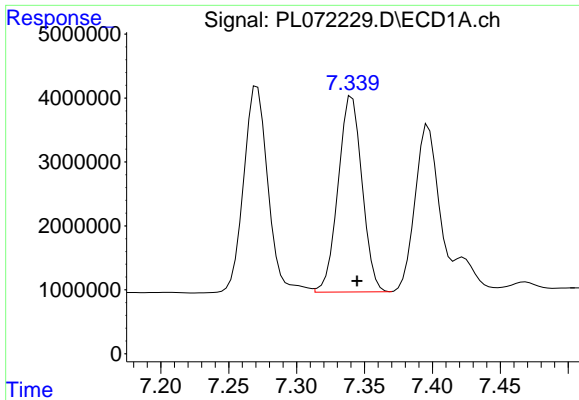
#10 gamma-Chlordane

R.T.: 7.271 min
 Delta R.T.: -0.004 min
 Response: 40268367
 Conc: 51.25 ng/ml



#10 gamma-Chlordane

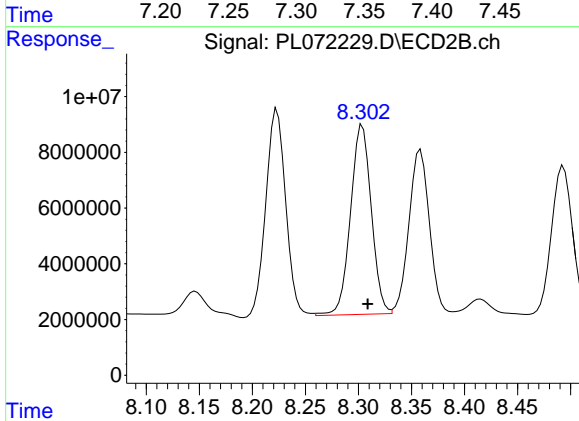
R.T.: 8.223 min
 Delta R.T.: -0.005 min
 Response: 97584219
 Conc: 48.29 ng/ml



#11 alpha-Chlordane

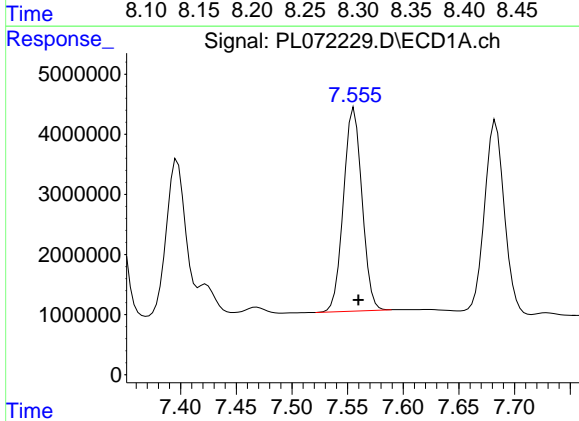
R.T.: 7.341 min
 Delta R.T.: -0.004 min
 Response: 37579858
 Conc: 47.90 ng/ml

Instrument :
 ECD_L
 ClientSampleId :
 TP-3DMSD



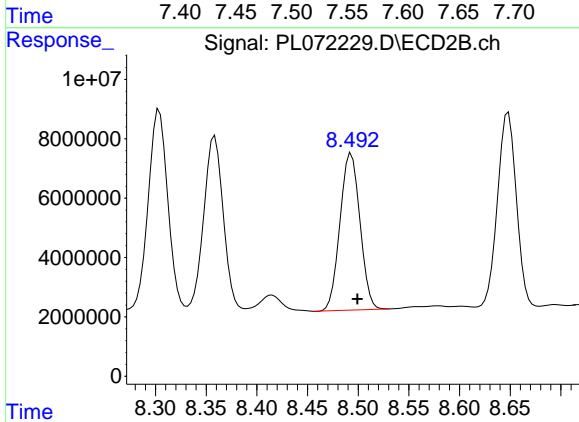
#11 alpha-Chlordane

R.T.: 8.304 min
 Delta R.T.: -0.005 min
 Response: 92788791
 Conc: 46.80 ng/ml



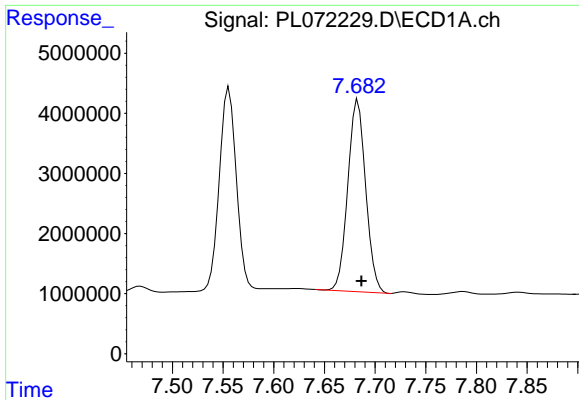
#12 4,4'-DDE

R.T.: 7.556 min
 Delta R.T.: -0.004 min
 Response: 39191651
 Conc: 54.28 ng/ml



#12 4,4'-DDE

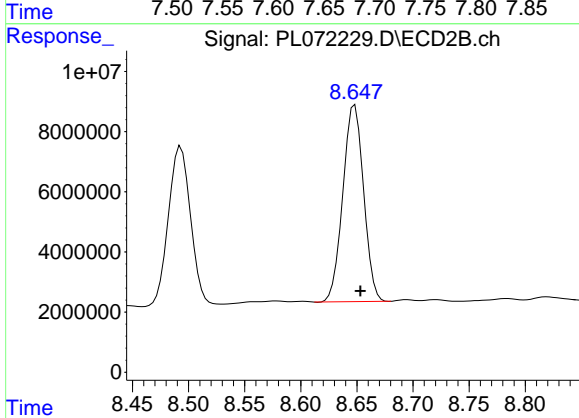
R.T.: 8.493 min
 Delta R.T.: -0.006 min
 Response: 72337582
 Conc: 38.25 ng/ml



#13 Dieldrin

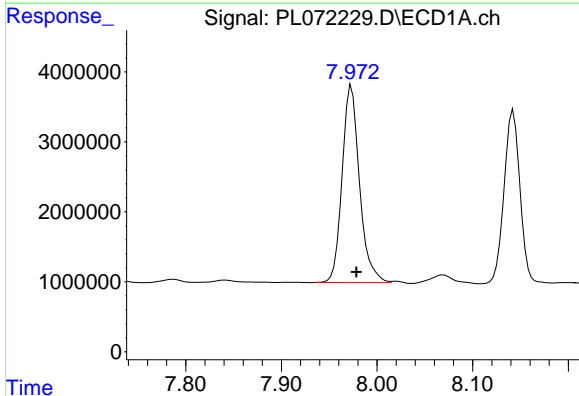
R.T.: 7.683 min
 Delta R.T.: -0.003 min
 Response: 39210630
 Conc: 51.76 ng/ml

Instrument :
 ECD_L
 ClientSampleId :
 TP-3DMSD



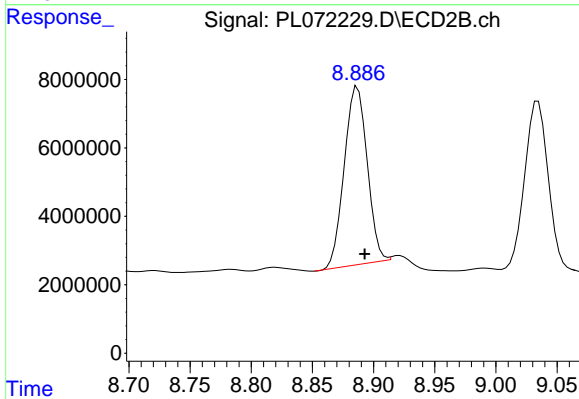
#13 Dieldrin

R.T.: 8.648 min
 Delta R.T.: -0.005 min
 Response: 84090946
 Conc: 42.80 ng/ml



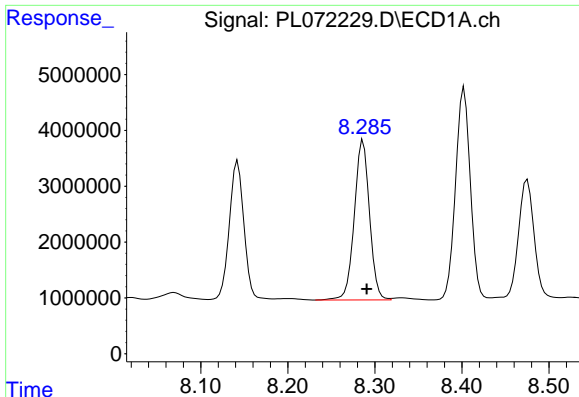
#14 Endrin

R.T.: 7.973 min
 Delta R.T.: -0.005 min
 Response: 35782542
 Conc: 51.07 ng/ml



#14 Endrin

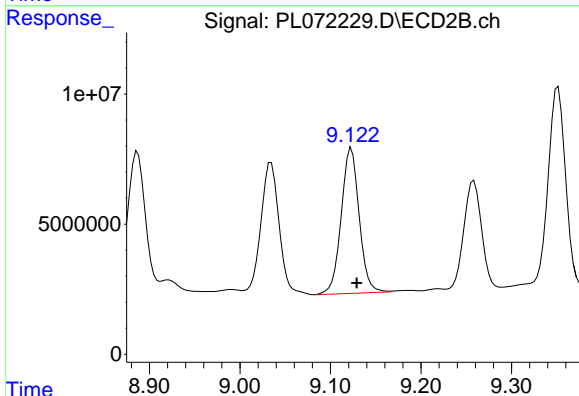
R.T.: 8.887 min
 Delta R.T.: -0.006 min
 Response: 67807342
 Conc: 40.90 ng/ml



#15 Endosulfan II

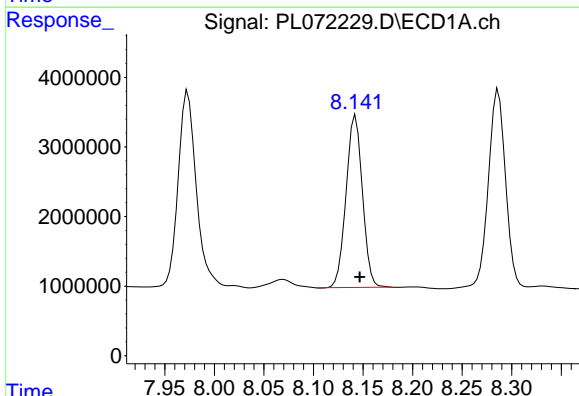
R.T.: 8.287 min
 Delta R.T.: -0.004 min
 Response: 34868915
 Conc: 46.90 ng/ml

Instrument :
 ECD_L
 ClientSampleId :
 TP-3DMSD



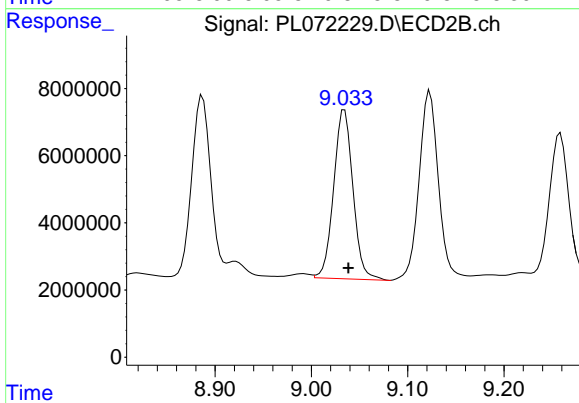
#15 Endosulfan II

R.T.: 9.123 min
 Delta R.T.: -0.006 min
 Response: 77073828
 Conc: 44.94 ng/ml



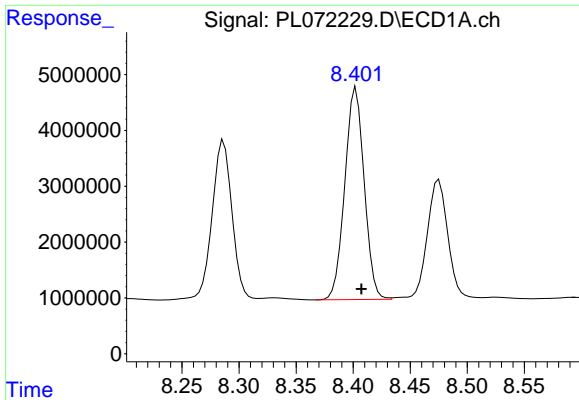
#16 4,4'-DDD

R.T.: 8.142 min
 Delta R.T.: -0.004 min
 Response: 28423180
 Conc: 48.49 ng/ml



#16 4,4'-DDD

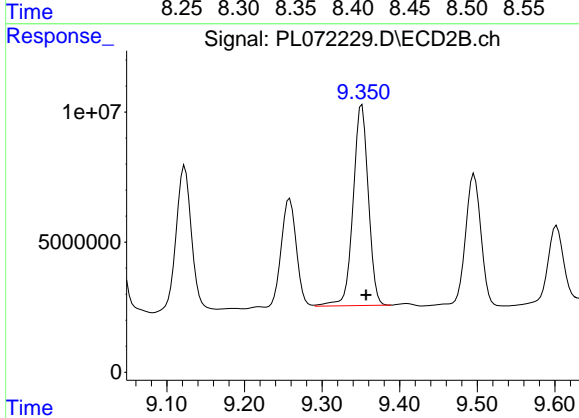
R.T.: 9.034 min
 Delta R.T.: -0.004 min
 Response: 69969351
 Conc: 48.94 ng/ml



#17 4,4'-DDT

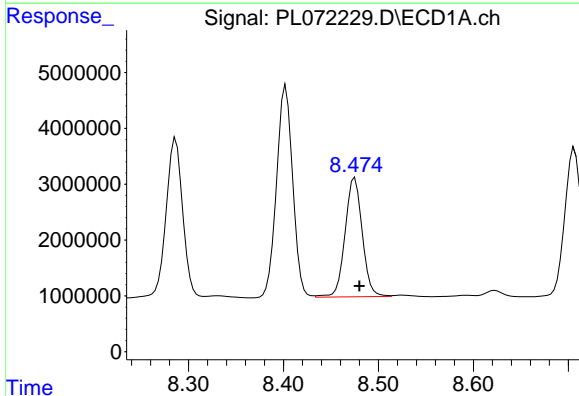
R.T.: 8.403 min
 Delta R.T.: -0.005 min
 Response: 44861875
 Conc: 67.56 ng/ml

Instrument :
 ECD_L
 ClientSampleId :
 TP-3DMSD



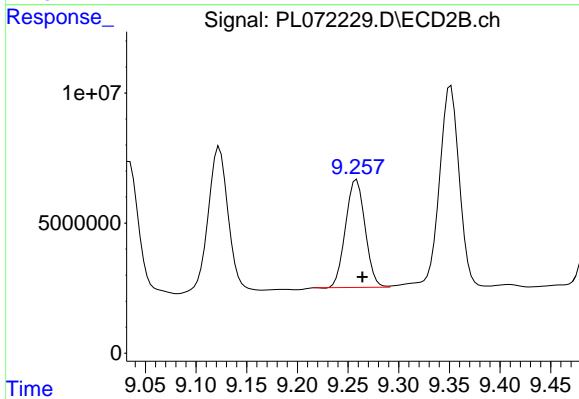
#17 4,4'-DDT

R.T.: 9.351 min
 Delta R.T.: -0.005 min
 Response: 105121554
 Conc: 66.51 ng/ml



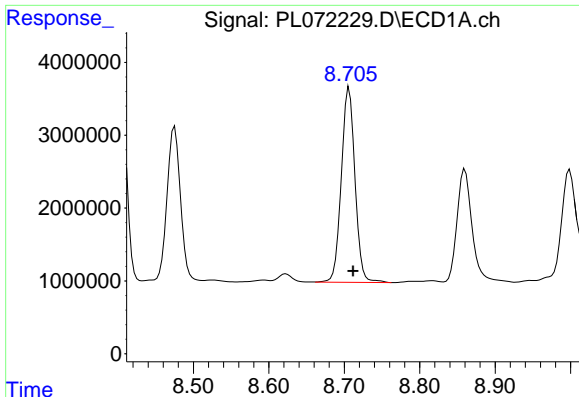
#18 Endrin aldehyde

R.T.: 8.475 min
 Delta R.T.: -0.005 min
 Response: 26849884
 Conc: 47.13 ng/ml



#18 Endrin aldehyde

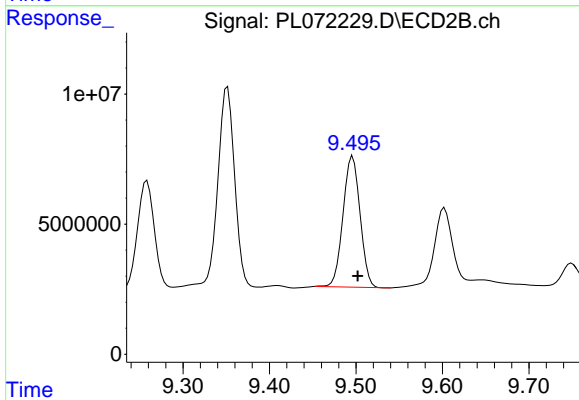
R.T.: 9.258 min
 Delta R.T.: -0.006 min
 Response: 55545656
 Conc: 44.75 ng/ml



#19 Endosulfan Sulfate

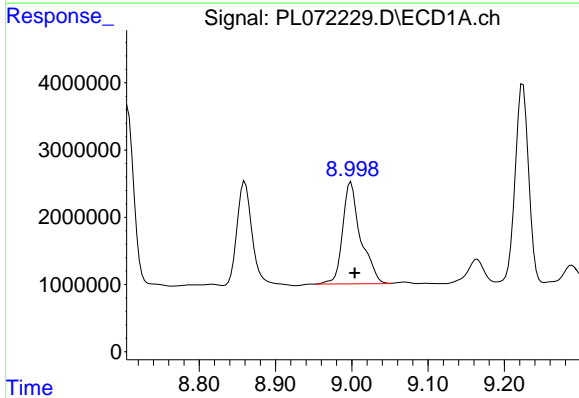
R.T.: 8.707 min
 Delta R.T.: -0.005 min
 Response: 33632614
 Conc: 45.87 ng/ml

Instrument :
 ECD_L
 ClientSampleId :
 TP-3DMSD



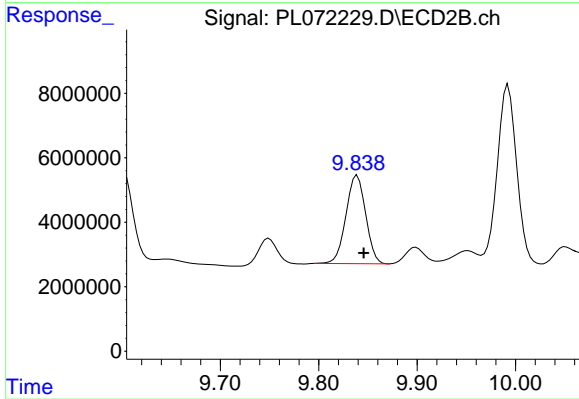
#19 Endosulfan Sulfate

R.T.: 9.496 min
 Delta R.T.: -0.006 min
 Response: 68397857
 Conc: 43.81 ng/ml



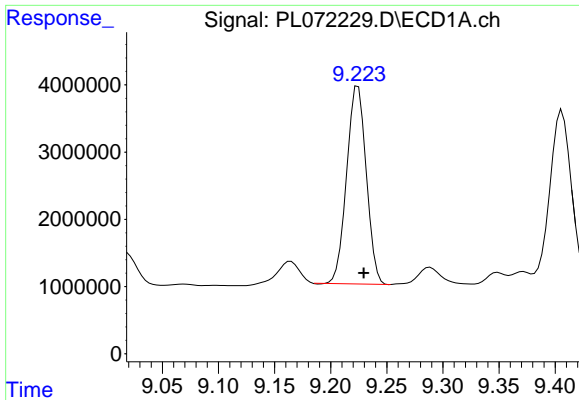
#20 Methoxychlor

R.T.: 8.999 min
 Delta R.T.: -0.005 min
 Response: 24919041
 Conc: 59.06 ng/ml



#20 Methoxychlor

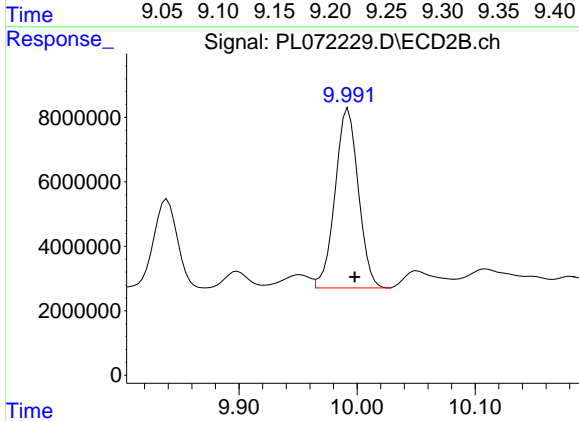
R.T.: 9.839 min
 Delta R.T.: -0.006 min
 Response: 38173337
 Conc: 46.08 ng/ml



#21 Endrin ketone

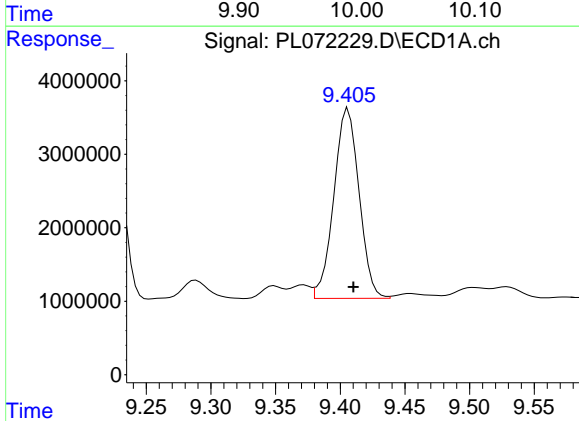
R.T.: 9.224 min
 Delta R.T.: -0.005 min
 Response: 35785358
 Conc: 42.98 ng/ml

Instrument :
 ECD_L
 ClientSampleId :
 TP-3DMSD



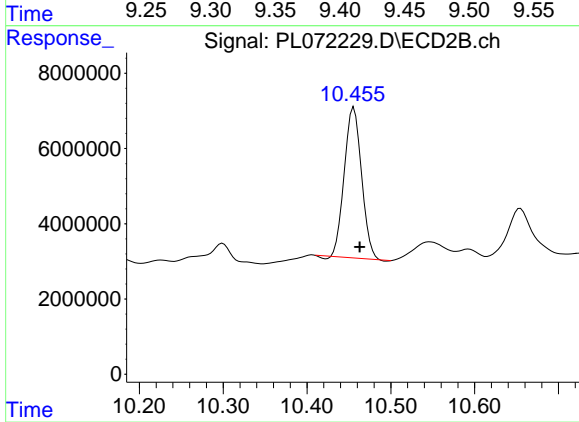
#21 Endrin ketone

R.T.: 9.993 min
 Delta R.T.: -0.005 min
 Response: 76197919
 Conc: 46.04 ng/ml



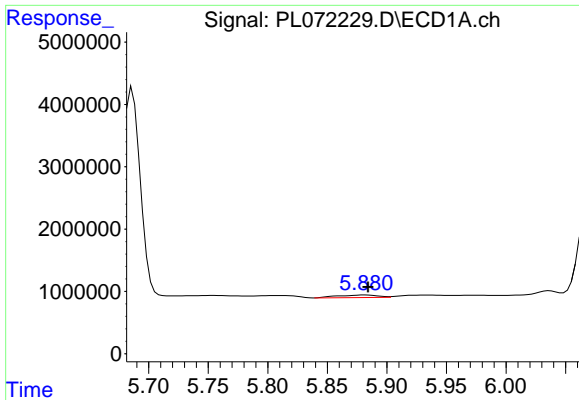
#22 Mirex

R.T.: 9.406 min
 Delta R.T.: -0.004 min
 Response: 35058629
 Conc: 47.47 ng/ml



#22 Mirex

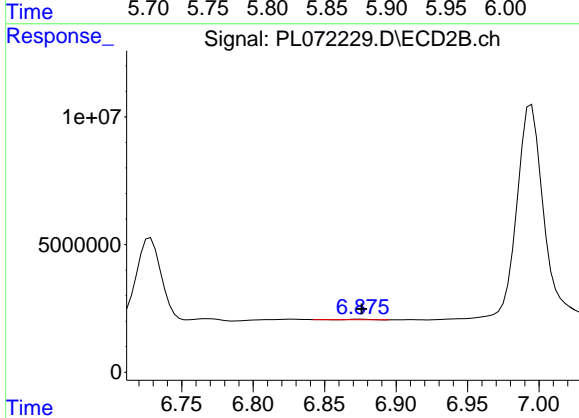
R.T.: 10.456 min
 Delta R.T.: -0.007 min
 Response: 56846322
 Conc: 45.56 ng/ml



#23 Chlordane-1

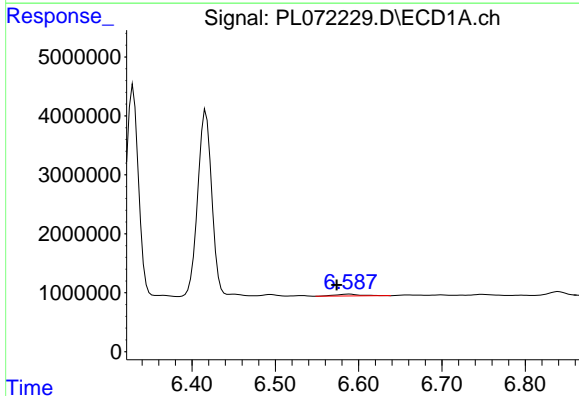
R.T.: 5.882 min
 Delta R.T.: -0.002 min
 Response: 966859
 Conc: 46.87 ng/ml

Instrument :
 ECD_L
 ClientSampleId :
 TP-3DMSD



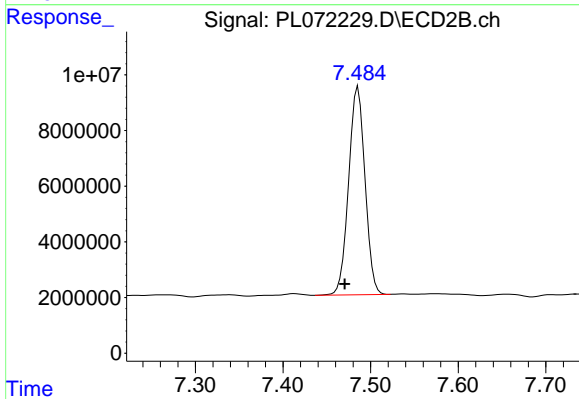
#23 Chlordane-1

R.T.: 6.876 min
 Delta R.T.: 0.000 min
 Response: 196243
 Conc: 3.01 ng/ml



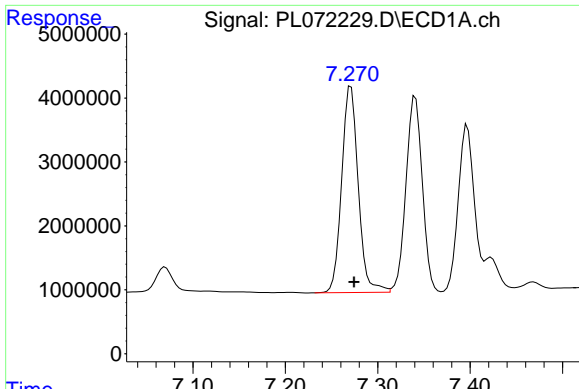
#24 Chlordane-2

R.T.: 6.589 min
 Delta R.T.: 0.015 min
 Response: 640176
 Conc: 23.25 ng/ml



#24 Chlordane-2

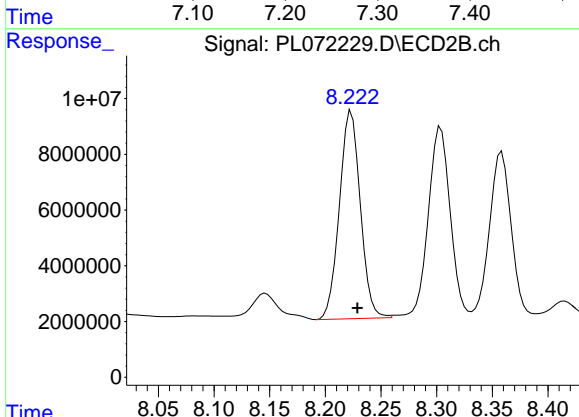
R.T.: 7.486 min
 Delta R.T.: 0.015 min
 Response: 97121545
 Conc: 1389.55 ng/ml



#25 Chlordane-3

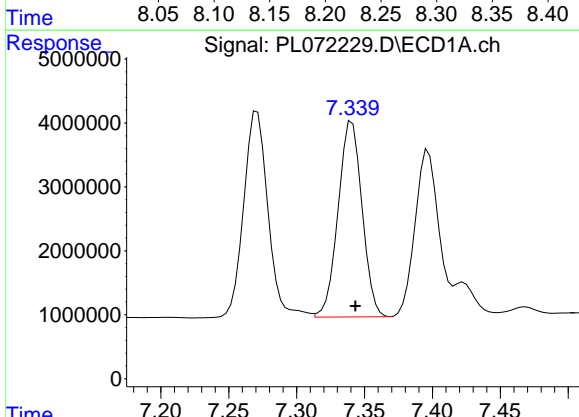
R.T.: 7.271 min
 Delta R.T.: -0.003 min
 Response: 40268367
 Conc: 526.32 ng/ml

Instrument :
 ECD_L
 ClientSampleId :
 TP-3DMSD



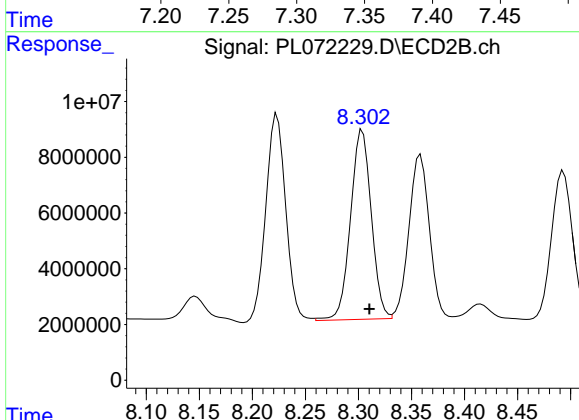
#25 Chlordane-3

R.T.: 8.223 min
 Delta R.T.: -0.006 min
 Response: 97584219
 Conc: 351.23 ng/ml



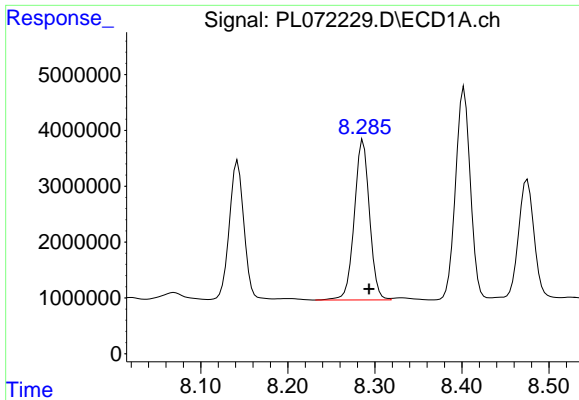
#26 Chlordane-4

R.T.: 7.341 min
 Delta R.T.: -0.002 min
 Response: 37579858
 Conc: 455.49 ng/ml



#26 Chlordane-4

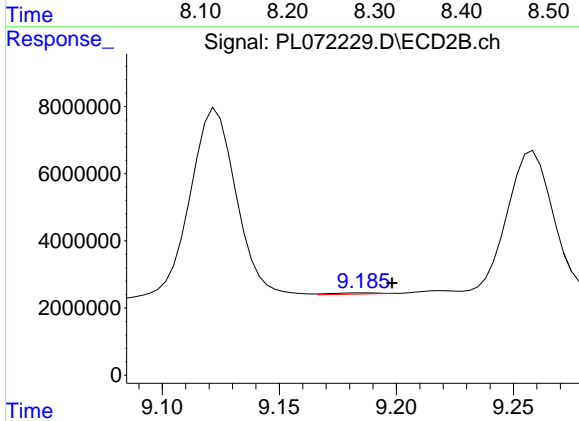
R.T.: 8.304 min
 Delta R.T.: -0.007 min
 Response: 92788791
 Conc: 279.43 ng/ml



#27 Chlordane-5

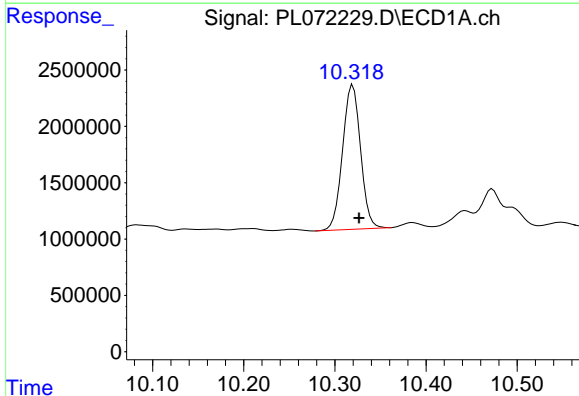
R.T.: 8.287 min
 Delta R.T.: -0.007 min
 Response: 34868915
 Conc: 1196.45 ng/ml

Instrument :
 ECD_L
 ClientSampleId :
 TP-3DMSD



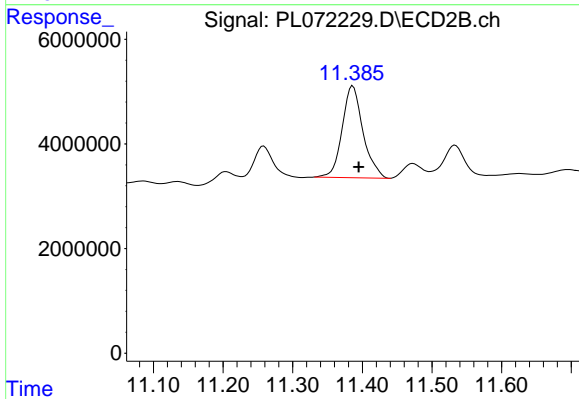
#27 Chlordane-5

R.T.: 9.187 min
 Delta R.T.: -0.011 min
 Response: 515861
 Conc: 8.45 ng/ml



#28 Decachlorobiphenyl

R.T.: 10.320 min
 Delta R.T.: -0.007 min
 Response: 17564647
 Conc: 19.77 ng/ml



#28 Decachlorobiphenyl

R.T.: 11.386 min
 Delta R.T.: -0.008 min
 Response: 36510089
 Conc: 22.63 ng/ml