

Data Path : Z:\pestpcbsrv\HPCHEM1\ECD_L\Data\PL012522\
 Data File : PL072255.D
 Signal(s) : Signal #1: ECD1A.ch Signal #2: ECD2B.ch
 Acq On : 25 Jan 2022 21:31
 Operator : AR\AJ
 Sample : N1247-01
 Misc :
 ALS Vial : 29 Sample Multiplier: 1

Instrument :
 ECD_L
 ClientSampleId :
 SS-1

Integration File signal 1: autoint1.e
 Integration File signal 2: autoint2.e
 Quant Time: Jan 26 00:42:36 2022
 Quant Method : Z:\pestpcbsrv\HPCHEM1\ECD_L\methods\PL011722.M
 Quant Title : GC Extractables
 QLast Update : Tue Jan 18 10:53:59 2022
 Response via : Initial Calibration
 Integrator: ChemStation

Volume Inj. : 1 µl
 Signal #1 Phase : ZB-MR2 Signal #2 Phase: ZB-MR1
 Signal #1 Info : 30M x 0.32mm x0.2 Signal #2 Info : 30M x 0.32mm x0.5µm

Compound	RT#1	RT#2	Resp#1	Resp#2	ng/ml	ng/ml

System Monitoring Compounds						
1) SA Tetrachlo...	4.556	5.492	9584073	28115427	17.263	17.311
28) SA Decachlor...	10.317	11.385	16223109	31161558	18.260	19.313
Target Compounds						
2) A alpha-BHC	5.294f	6.068	632201	381323	0.818	0.158 #
3) MA gamma-BHC...	5.678	0.000	1094810	0	1.452	N.D. #
4) MA Heptachlor	6.092	7.116	1090902	1531186	1.265	0.660 #
5) MB Aldrin	0.000	7.463f	0	15064047	N.D.	6.813 #
6) B beta-BHC	6.092f	6.719	1090902	692176	3.300	0.699 #
7) B delta-BHC	6.309f	7.017f	600536	456530	0.758	0.186 #
8) Heptachlo...	6.993	7.949	3214327	20710522	4.223	10.343 #
9) A Endosulfan I	7.398	8.353	816365	837964	1.149	0.463 #
10) B gamma-Chl...	7.270	8.224	22767518	73625815	28.977	36.434 #
11) B alpha-Chl...	7.339	8.305	28575757	97862943	36.426	49.356 #
12) B 4,4'-DDE	7.555	8.476f	1300574	1994908	1.801	1.055 #
13) MA Dieldrin	7.686	8.648	2156282	1851128	2.846	0.942 #
14) MA Endrin	7.984	8.916f	1004750	-889139	1.434	N.D. #
15) B Endosulfa...	8.288	9.130	6485848	1445957	8.723	0.843 #
16) A 4,4'-DDD	0.000	9.032	0	2834315	N.D.	1.982 #
17) MA 4,4'-DDT	8.400	9.351	2471829	5530677	3.722	3.499
18) B Endrin al...	0.000	9.242f	0	930531	N.D.	0.750 #
19) B Endosulfa...	8.721	9.479f	1049893	712722	1.432	0.457 #
20) A Methoxychlor	9.018	9.850	3049159	1345347	7.227	1.624 #
21) B Endrin ke...	0.000	10.004	0	1751623	N.D.	1.058 #
22) Mirex	9.407	10.478	302401	180455	0.409	0.145 #
23) Chlordane-1	5.881	6.874	5698589	13250482	276.261	203.046 #
24) Chlordane-2	6.573	7.463	5991905	15064047	217.588	215.526
25) Chlordane-3	7.270	8.224	22767518	73625815	297.581	265.000
26) Chlordane-4	7.339	8.305	28575757	97862943	346.357	294.705
27) Chlordane-5	8.288	9.192	6485848	11836186	222.548	193.978

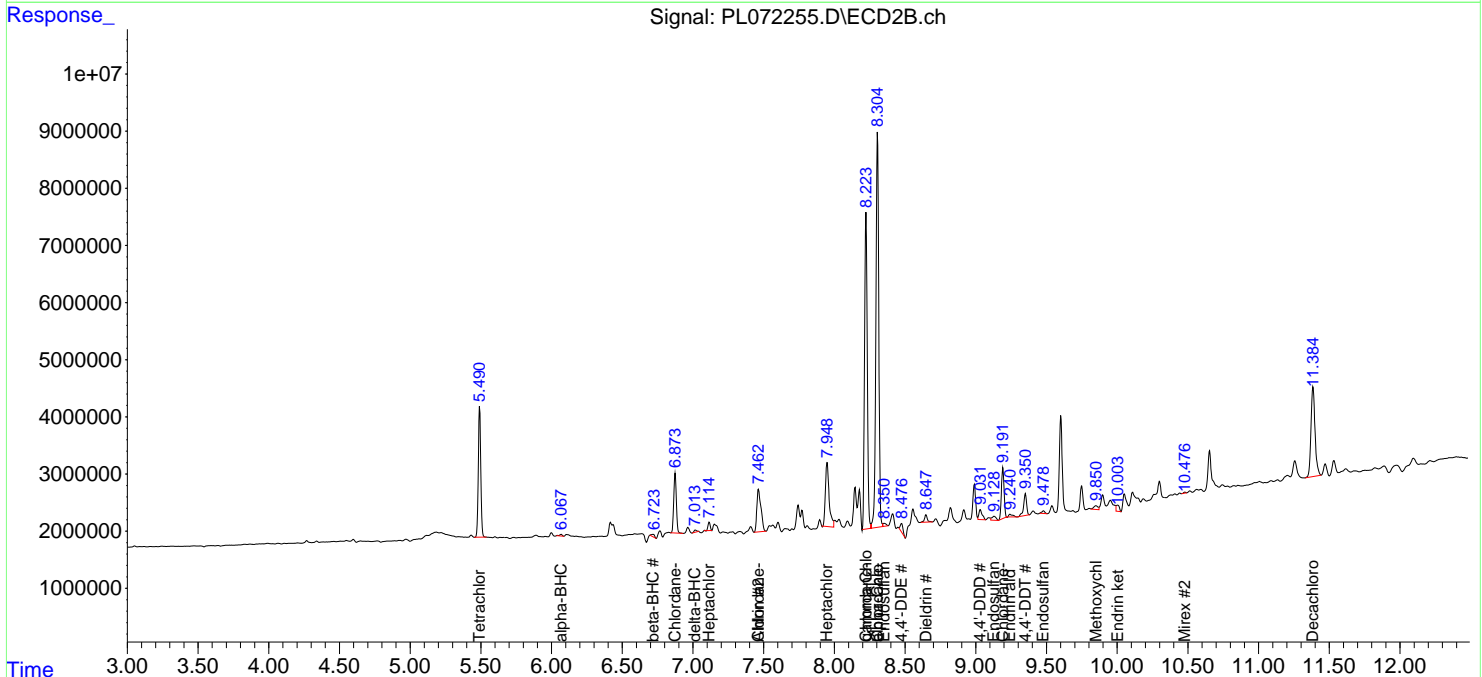
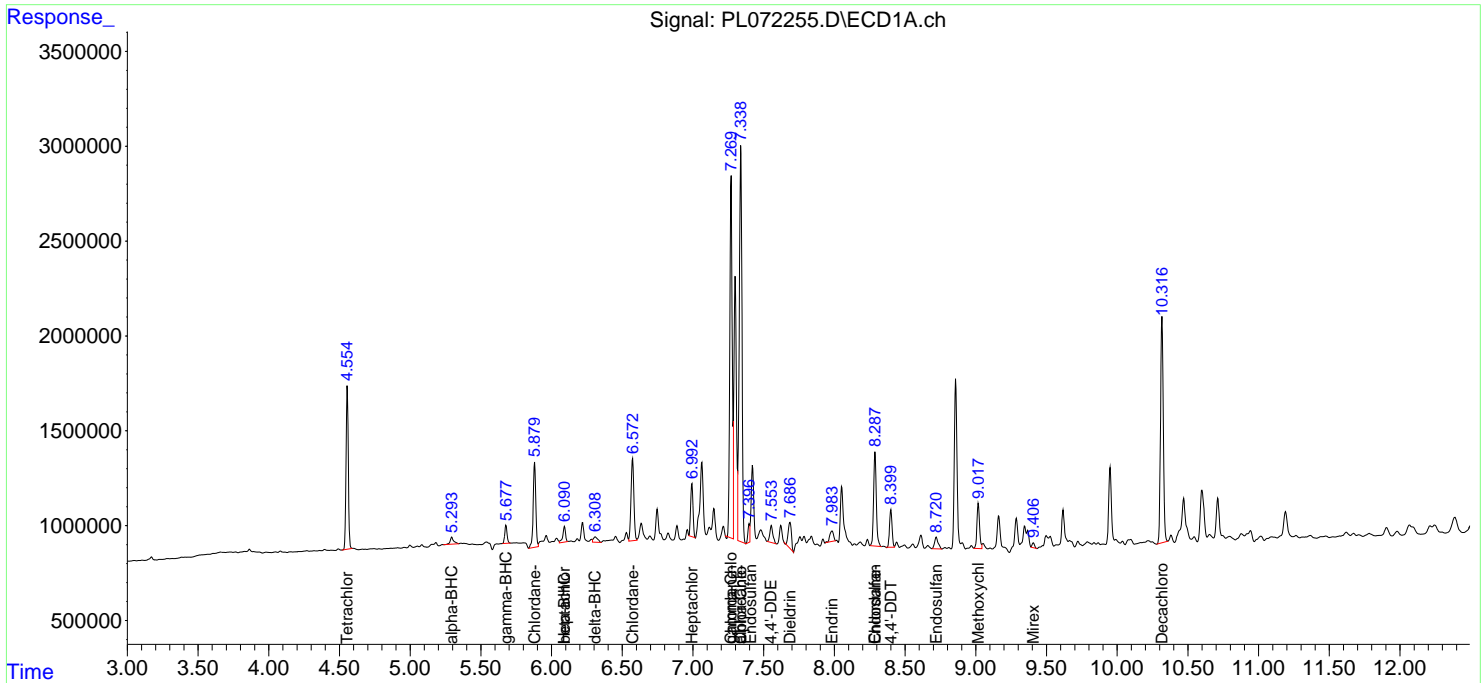
(f)=RT Delta > 1/2 Window (#)=Amounts differ by > 25% (m)=manual int.

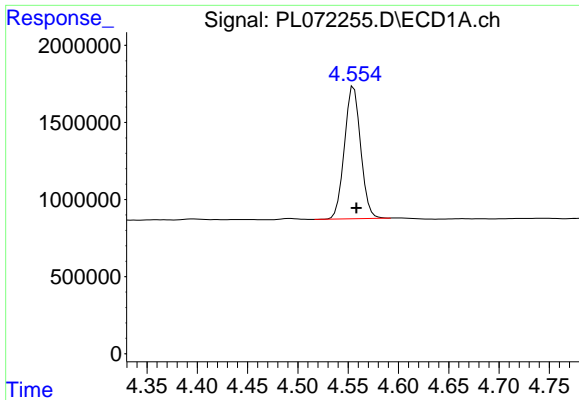
Data Path : Z:\pestpcbsrv\HPCHEM1\ECD_L\Data\PL012522\
 Data File : PL072255.D
 Signal(s) : Signal #1: ECD1A.ch Signal #2: ECD2B.ch
 Acq On : 25 Jan 2022 21:31
 Operator : AR\AJ
 Sample : N1247-01
 Misc :
 ALS Vial : 29 Sample Multiplier: 1

Instrument :
 ECD_L
 ClientSampleId :
 SS-1

Integration File signal 1: autoint1.e
 Integration File signal 2: autoint2.e
 Quant Time: Jan 26 00:42:36 2022
 Quant Method : Z:\pestpcbsrv\HPCHEM1\ECD_L\methods\PL011722.M
 Quant Title : GC Extractables
 QLast Update : Tue Jan 18 10:53:59 2022
 Response via : Initial Calibration
 Integrator: ChemStation

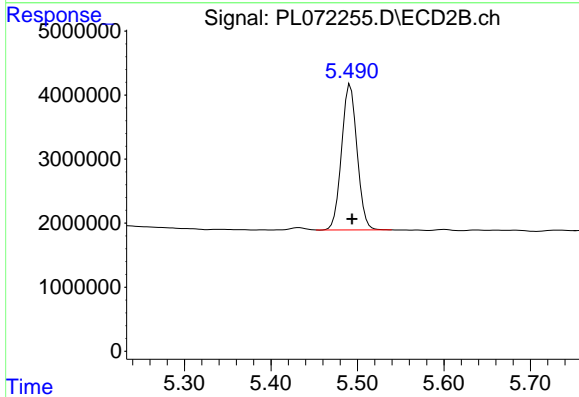
Volume Inj. : 1 µl
 Signal #1 Phase : ZB-MR2 Signal #2 Phase: ZB-MR1
 Signal #1 Info : 30M x 0.32mm x0.2 Signal #2 Info : 30M x 0.32mm x0.5µm



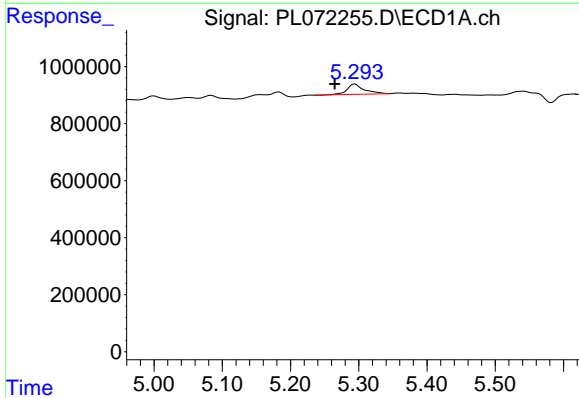


#1 Tetrachloro-m-xylene
 R.T.: 4.556 min
 Delta R.T.: -0.002 min
 Response: 9584073
 Conc: 17.26 ng/ml

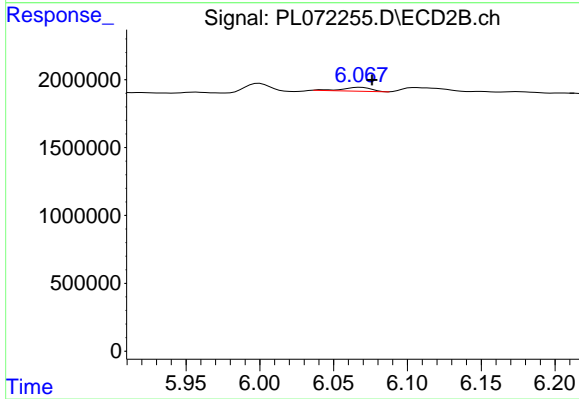
Instrument :
 ECD_L
 ClientSampleId :
 SS-1



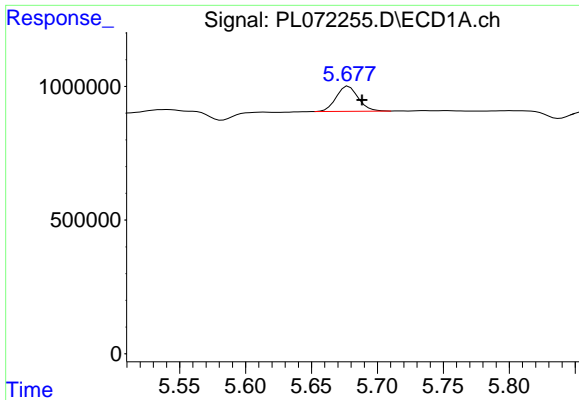
#1 Tetrachloro-m-xylene
 R.T.: 5.492 min
 Delta R.T.: -0.002 min
 Response: 28115427
 Conc: 17.31 ng/ml



#2 alpha-BHC
 R.T.: 5.294 min
 Delta R.T.: 0.030 min
 Response: 632201
 Conc: 0.82 ng/ml

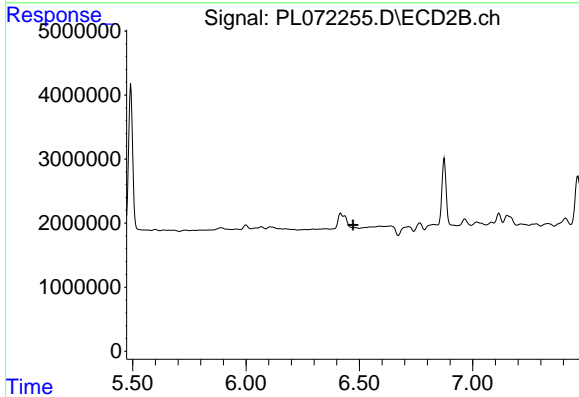


#2 alpha-BHC
 R.T.: 6.068 min
 Delta R.T.: -0.008 min
 Response: 381323
 Conc: 0.16 ng/ml

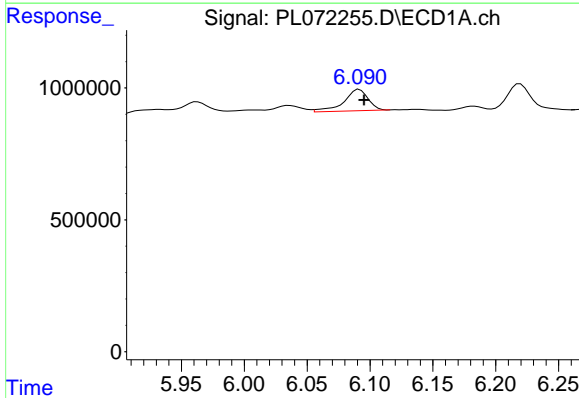


#3 gamma-BHC (Lindane)
 R.T.: 5.678 min
 Delta R.T.: -0.010 min
 Response: 1094810
 Conc: 1.45 ng/ml

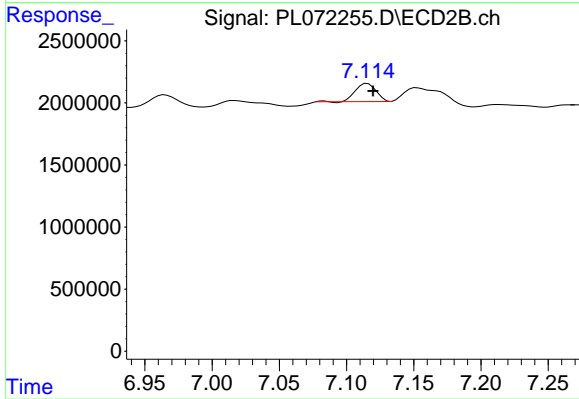
Instrument :
 ECD_L
 ClientSampleId :
 SS-1



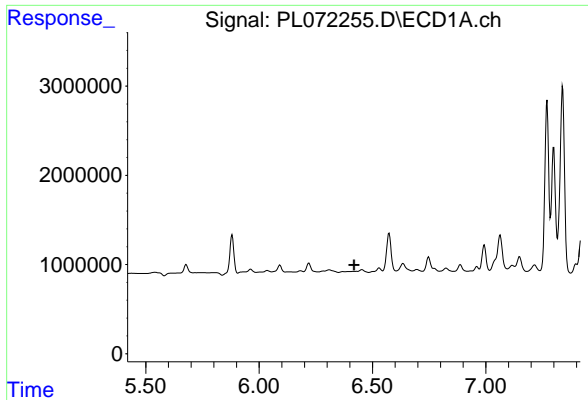
#3 gamma-BHC (Lindane)
 R.T.: 0.000 min
 Exp R.T. : 6.473 min
 Response: 0
 Conc: N.D.



#4 Heptachlor
 R.T.: 6.092 min
 Delta R.T.: -0.004 min
 Response: 1090902
 Conc: 1.26 ng/ml

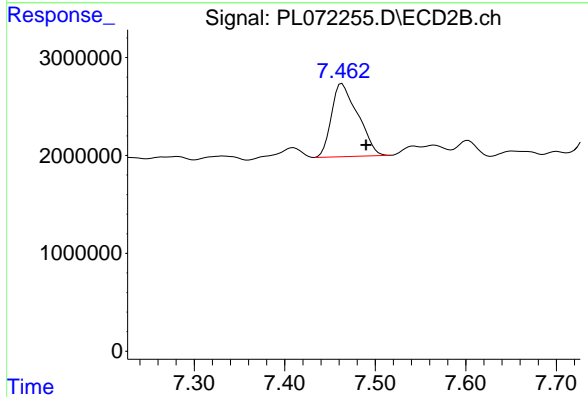


#4 Heptachlor
 R.T.: 7.116 min
 Delta R.T.: -0.004 min
 Response: 1531186
 Conc: 0.66 ng/ml

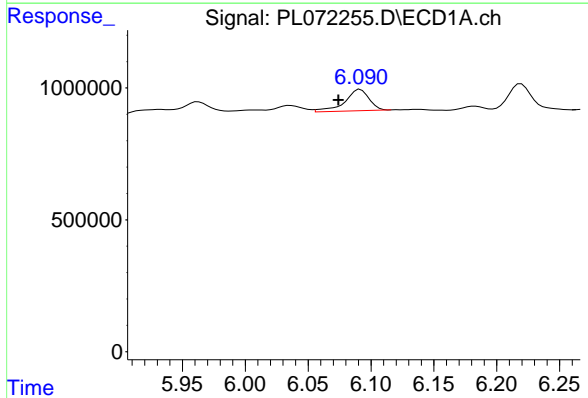


#5 Aldrin
 R.T.: 0.000 min
 Exp R.T.: 6.419 min
 Response: 0
 Conc: N.D.

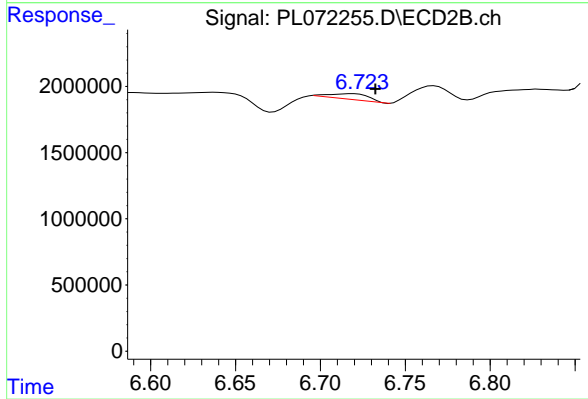
Instrument :
 ECD_L
 ClientSampleId :
 SS-1



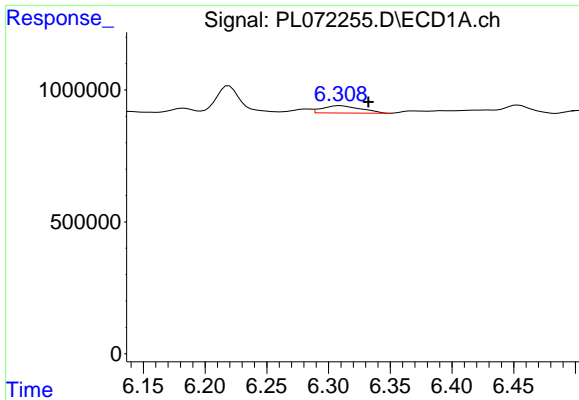
#5 Aldrin
 R.T.: 7.463 min
 Delta R.T.: -0.027 min
 Response: 15064047
 Conc: 6.81 ng/ml



#6 beta-BHC
 R.T.: 6.092 min
 Delta R.T.: 0.017 min
 Response: 1090902
 Conc: 3.30 ng/ml



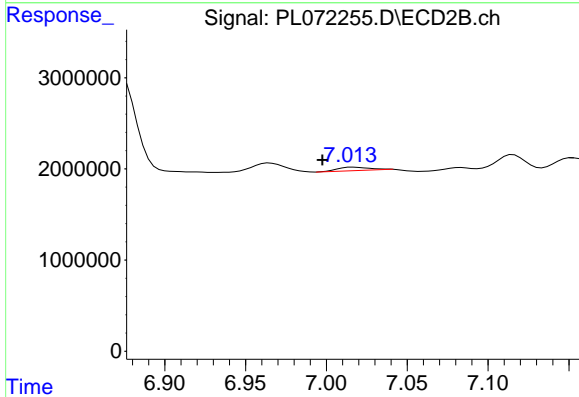
#6 beta-BHC
 R.T.: 6.719 min
 Delta R.T.: -0.013 min
 Response: 692176
 Conc: 0.70 ng/ml



#7 delta-BHC

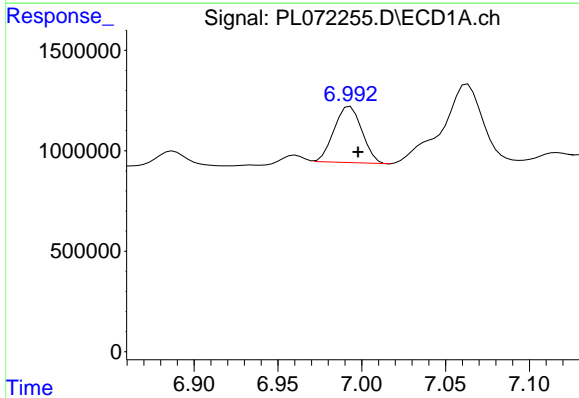
R.T.: 6.309 min
 Delta R.T.: -0.023 min
 Response: 600536
 Conc: 0.76 ng/ml

Instrument :
 ECD_L
 ClientSampleId :
 SS-1



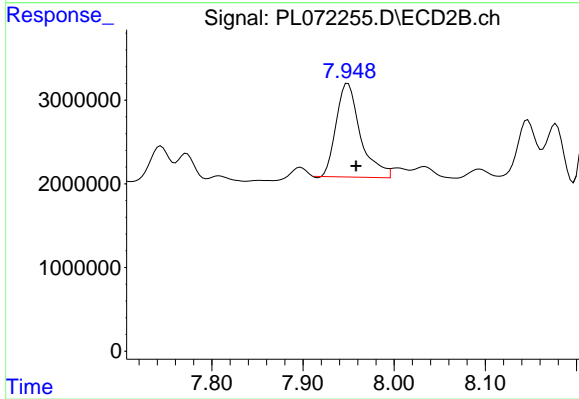
#7 delta-BHC

R.T.: 7.017 min
 Delta R.T.: 0.019 min
 Response: 456530
 Conc: 0.19 ng/ml



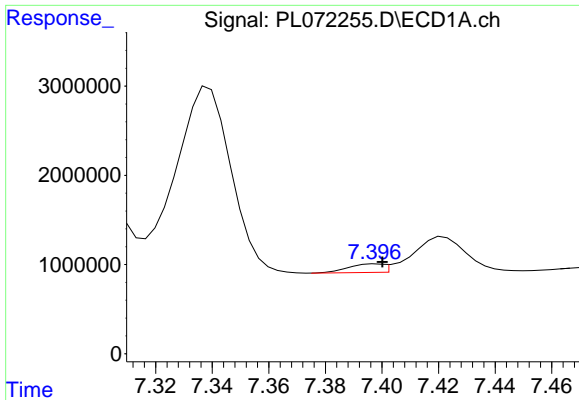
#8 Heptachlor epoxide

R.T.: 6.993 min
 Delta R.T.: -0.005 min
 Response: 3214327
 Conc: 4.22 ng/ml



#8 Heptachlor epoxide

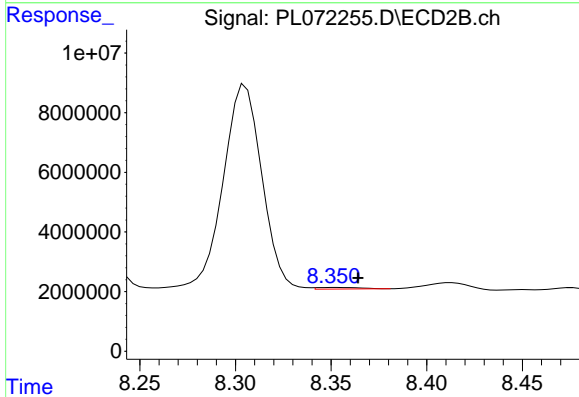
R.T.: 7.949 min
 Delta R.T.: -0.009 min
 Response: 20710522
 Conc: 10.34 ng/ml



#9 Endosulfan I

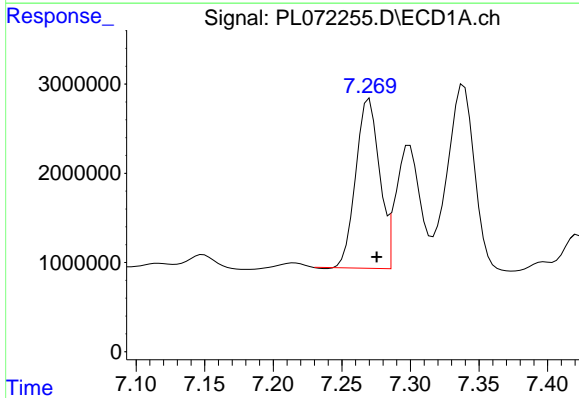
R.T.: 7.398 min
 Delta R.T.: -0.002 min
 Response: 816365
 Conc: 1.15 ng/ml

Instrument :
 ECD_L
 ClientSampleId :
 SS-1



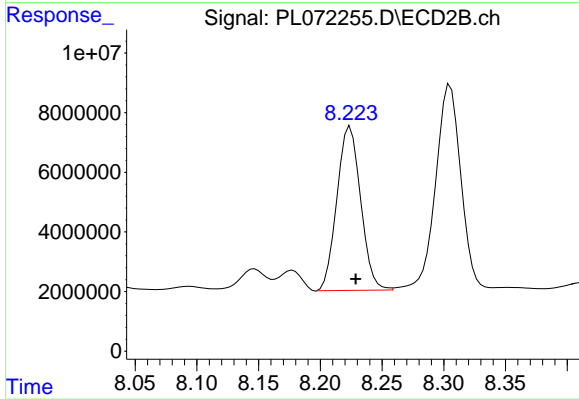
#9 Endosulfan I

R.T.: 8.353 min
 Delta R.T.: -0.011 min
 Response: 837964
 Conc: 0.46 ng/ml



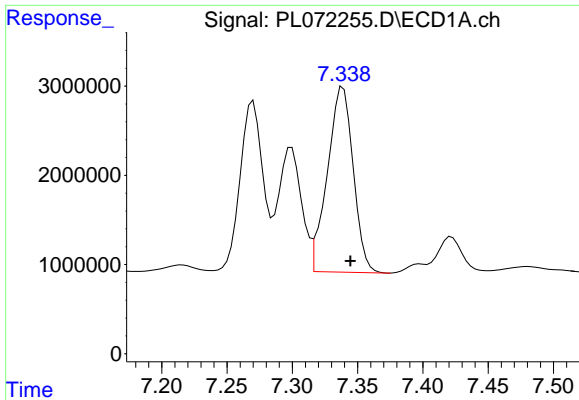
#10 gamma-Chlordane

R.T.: 7.270 min
 Delta R.T.: -0.005 min
 Response: 22767518
 Conc: 28.98 ng/ml



#10 gamma-Chlordane

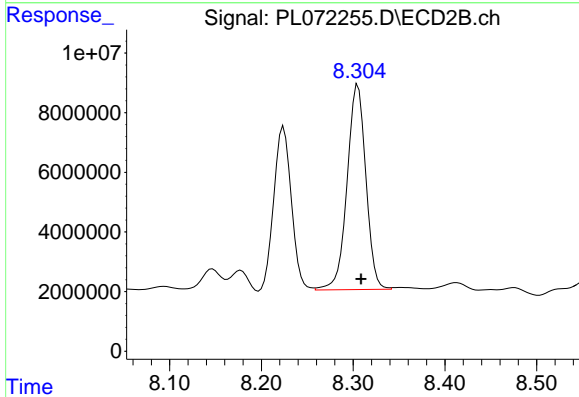
R.T.: 8.224 min
 Delta R.T.: -0.005 min
 Response: 73625815
 Conc: 36.43 ng/ml



#11 alpha-Chlordane

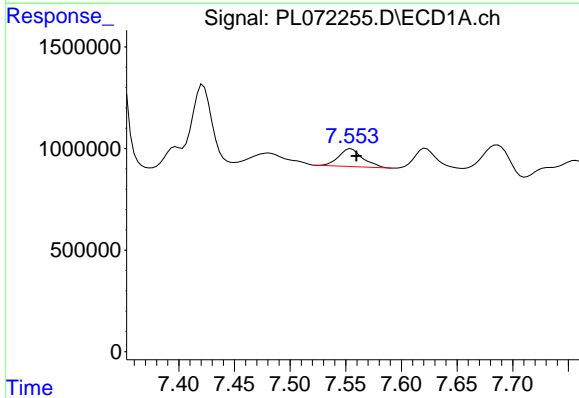
R.T.: 7.339 min
 Delta R.T.: -0.006 min
 Response: 28575757
 Conc: 36.43 ng/ml

Instrument :
 ECD_L
 ClientSampleId :
 SS-1



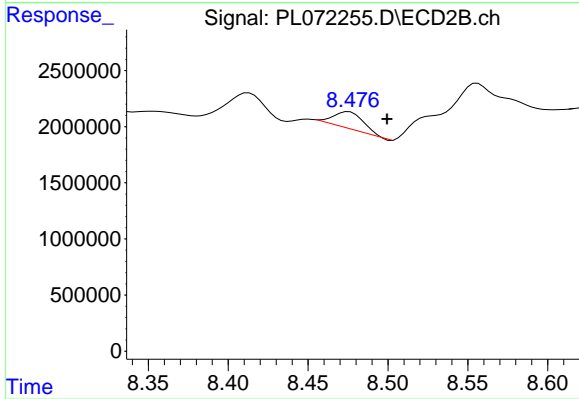
#11 alpha-Chlordane

R.T.: 8.305 min
 Delta R.T.: -0.004 min
 Response: 97862943
 Conc: 49.36 ng/ml



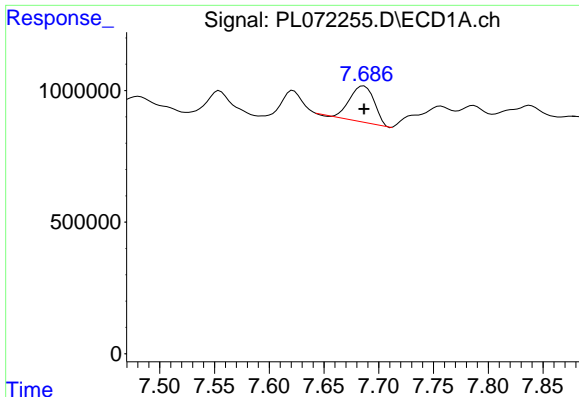
#12 4,4'-DDE

R.T.: 7.555 min
 Delta R.T.: -0.005 min
 Response: 1300574
 Conc: 1.80 ng/ml



#12 4,4'-DDE

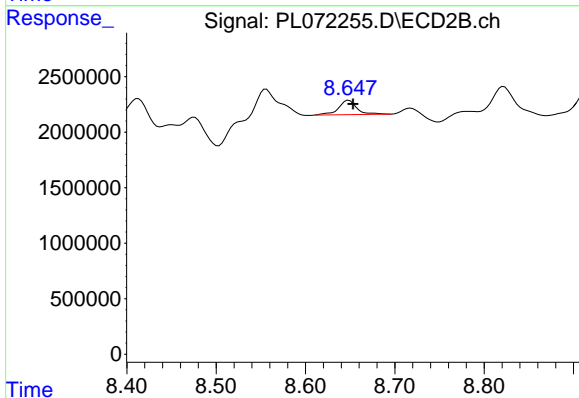
R.T.: 8.476 min
 Delta R.T.: -0.024 min
 Response: 1994908
 Conc: 1.05 ng/ml



#13 Dieldrin

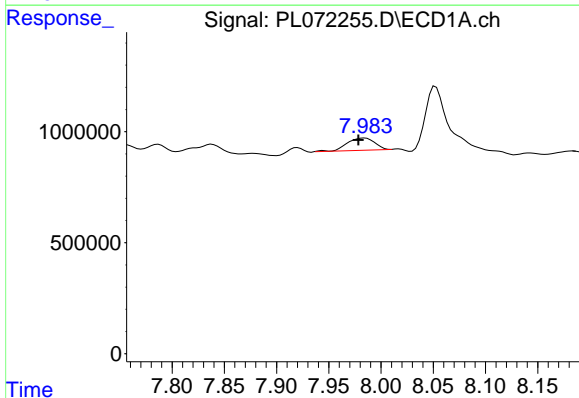
R.T.: 7.686 min
 Delta R.T.: 0.000 min
 Response: 2156282
 Conc: 2.85 ng/ml

Instrument :
 ECD_L
 ClientSampleId :
 SS-1



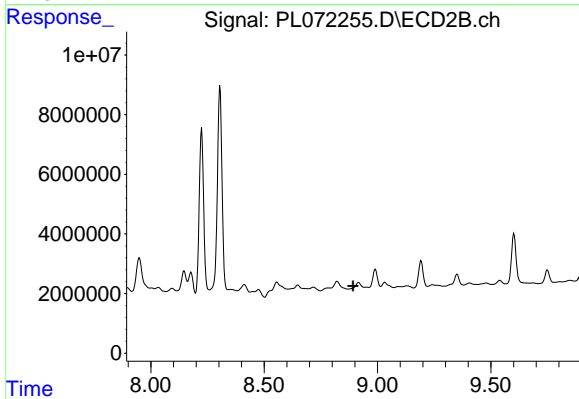
#13 Dieldrin

R.T.: 8.648 min
 Delta R.T.: -0.005 min
 Response: 1851128
 Conc: 0.94 ng/ml



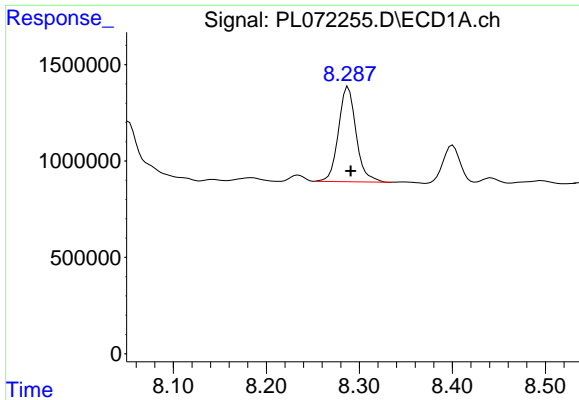
#14 Endrin

R.T.: 7.984 min
 Delta R.T.: 0.006 min
 Response: 1004750
 Conc: 1.43 ng/ml



#14 Endrin

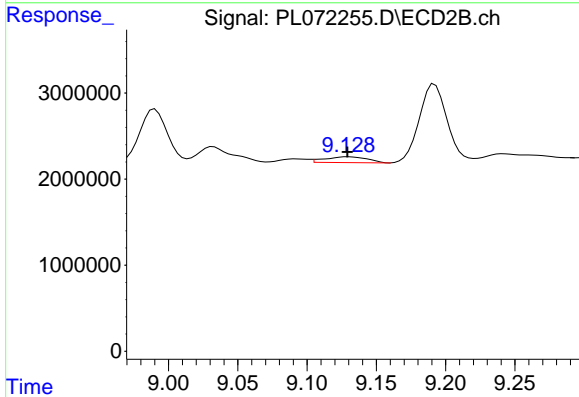
R.T.: 8.916 min
 Delta R.T.: 0.024 min
 Response: -889139
 Conc: N.D.



#15 Endosulfan II

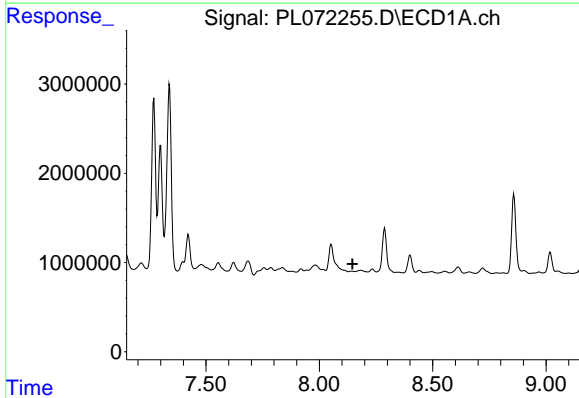
R.T.: 8.288 min
 Delta R.T.: -0.003 min
 Response: 6485848
 Conc: 8.72 ng/ml

Instrument :
 ECD_L
 ClientSampleId :
 SS-1



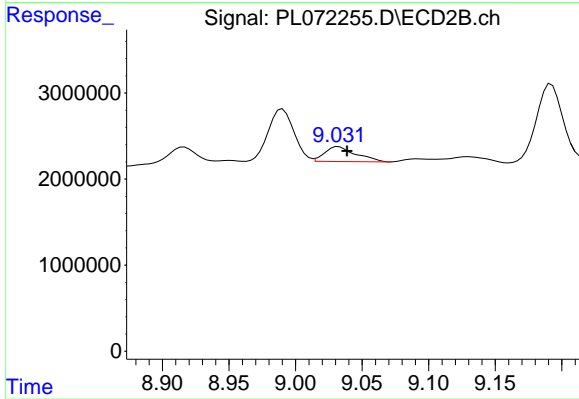
#15 Endosulfan II

R.T.: 9.130 min
 Delta R.T.: 0.000 min
 Response: 1445957
 Conc: 0.84 ng/ml



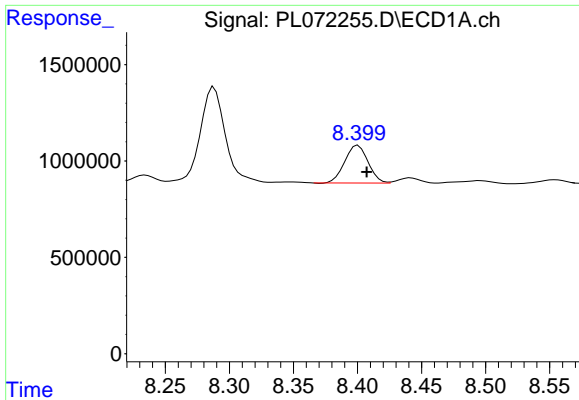
#16 4,4'-DDD

R.T.: 0.000 min
 Exp R.T. : 8.147 min
 Response: 0
 Conc: N.D.



#16 4,4'-DDD

R.T.: 9.032 min
 Delta R.T.: -0.006 min
 Response: 2834315
 Conc: 1.98 ng/ml

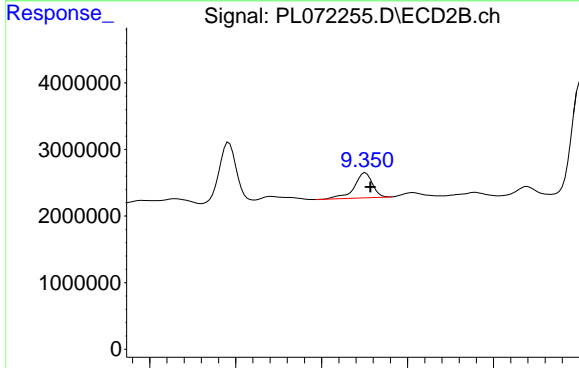


#17 4,4'-DDT

R.T.: 8.400 min
 Delta R.T.: -0.007 min
 Response: 2471829
 Conc: 3.72 ng/ml

Instrument :
 ECD_L
 ClientSampleId :
 SS-1

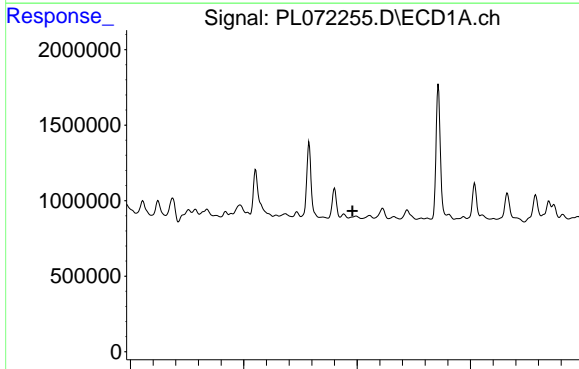
Time 8.25 8.30 8.35 8.40 8.45 8.50 8.55



#17 4,4'-DDT

R.T.: 9.351 min
 Delta R.T.: -0.006 min
 Response: 5530677
 Conc: 3.50 ng/ml

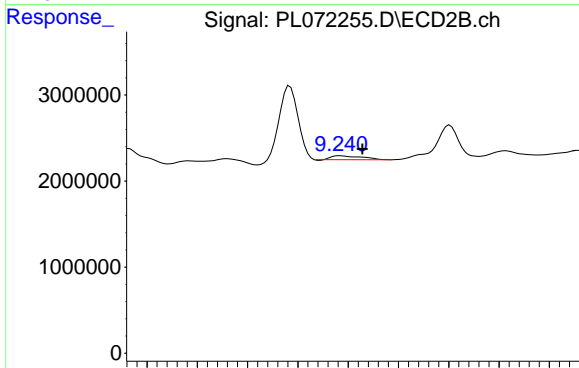
Time 9.10 9.20 9.30 9.40 9.50



#18 Endrin aldehyde

R.T.: 0.000 min
 Exp R.T. : 8.480 min
 Response: 0
 Conc: N.D.

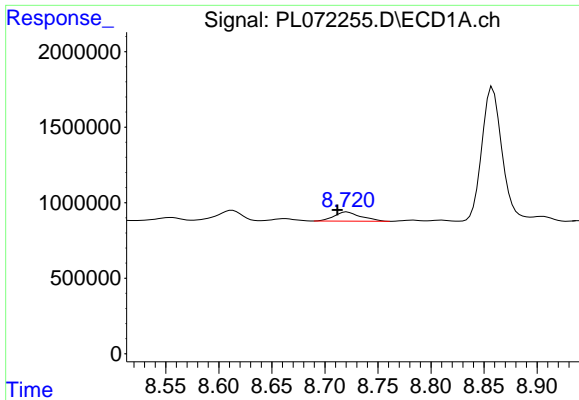
Time 7.50 8.00 8.50 9.00



#18 Endrin aldehyde

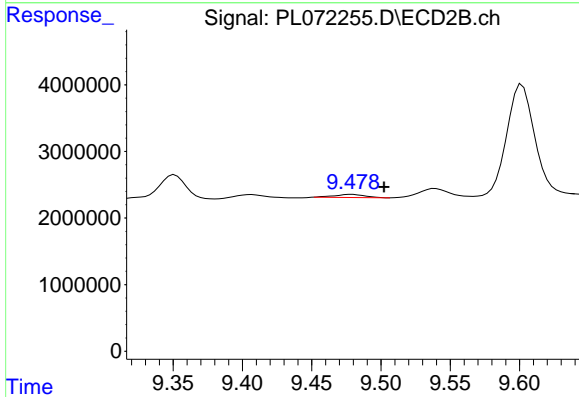
R.T.: 9.242 min
 Delta R.T.: -0.022 min
 Response: 930531
 Conc: 0.75 ng/ml

Time 9.05 9.10 9.15 9.20 9.25 9.30 9.35 9.40 9.45

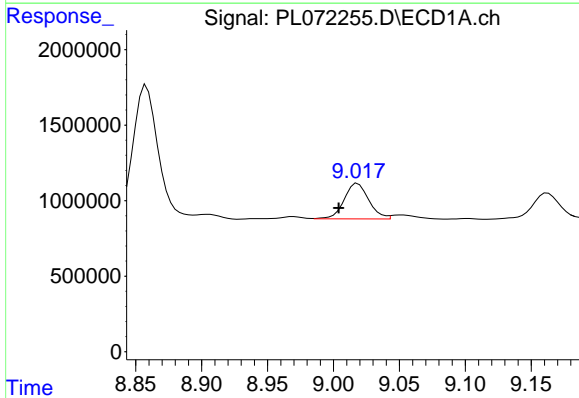


#19 Endosulfan Sulfate
 R.T.: 8.721 min
 Delta R.T.: 0.009 min
 Response: 1049893
 Conc: 1.43 ng/ml

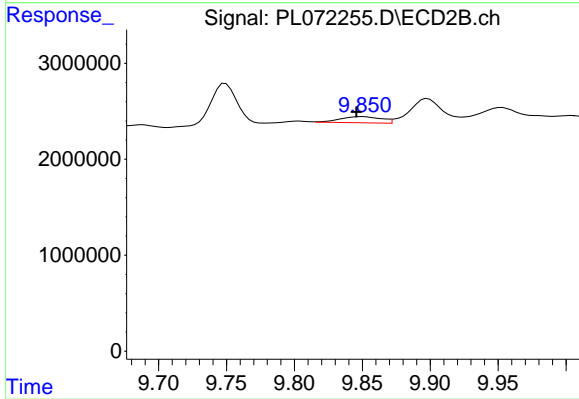
Instrument :
 ECD_L
 ClientSampleId :
 SS-1



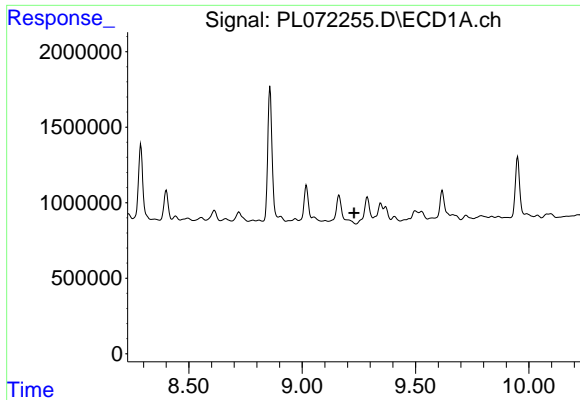
#19 Endosulfan Sulfate
 R.T.: 9.479 min
 Delta R.T.: -0.023 min
 Response: 712722
 Conc: 0.46 ng/ml



#20 Methoxychlor
 R.T.: 9.018 min
 Delta R.T.: 0.014 min
 Response: 3049159
 Conc: 7.23 ng/ml



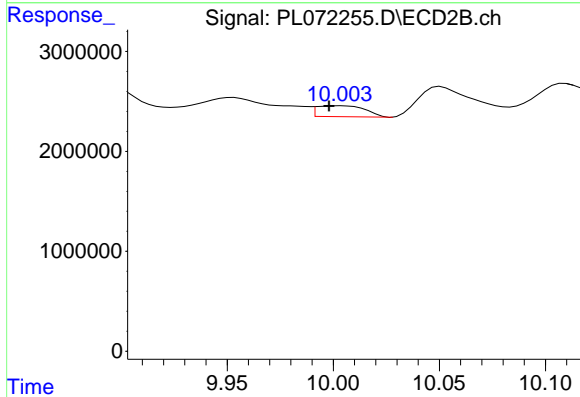
#20 Methoxychlor
 R.T.: 9.850 min
 Delta R.T.: 0.005 min
 Response: 1345347
 Conc: 1.62 ng/ml



#21 Endrin ketone

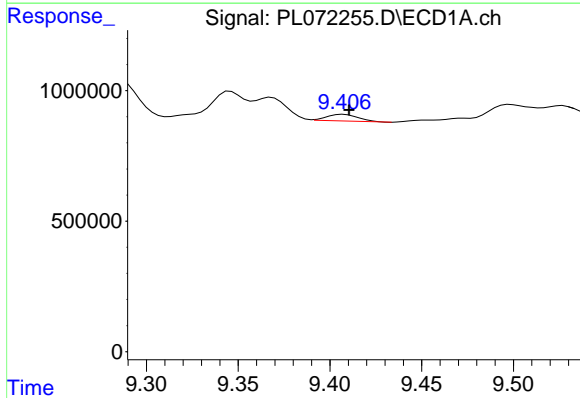
R.T.: 0.000 min
 Exp R.T.: 9.229 min
 Response: 0
 Conc: N.D.

Instrument :
 ECD_L
 ClientSampleId :
 SS-1



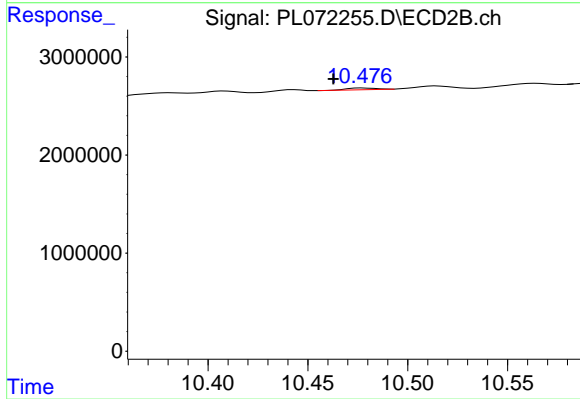
#21 Endrin ketone

R.T.: 10.004 min
 Delta R.T.: 0.007 min
 Response: 1751623
 Conc: 1.06 ng/ml



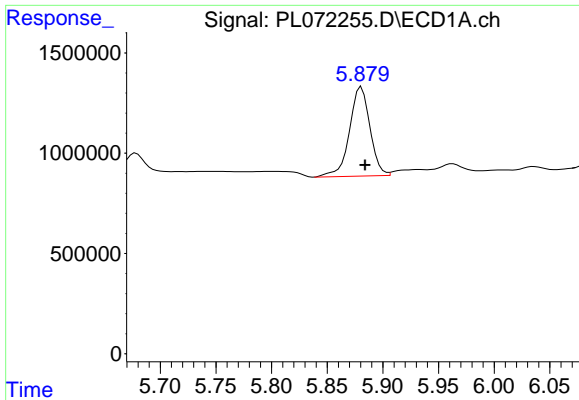
#22 Mirex

R.T.: 9.407 min
 Delta R.T.: -0.003 min
 Response: 302401
 Conc: 0.41 ng/ml



#22 Mirex

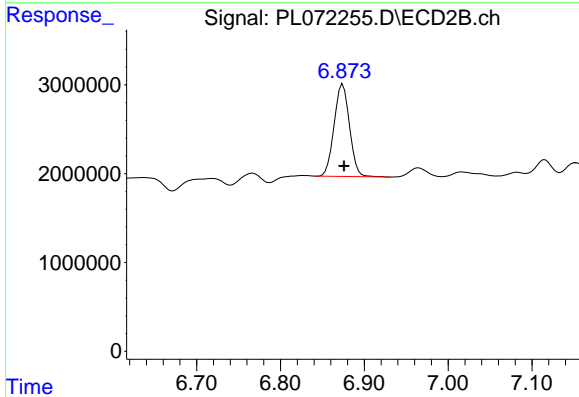
R.T.: 10.478 min
 Delta R.T.: 0.015 min
 Response: 180455
 Conc: 0.14 ng/ml



#23 Chlordane-1

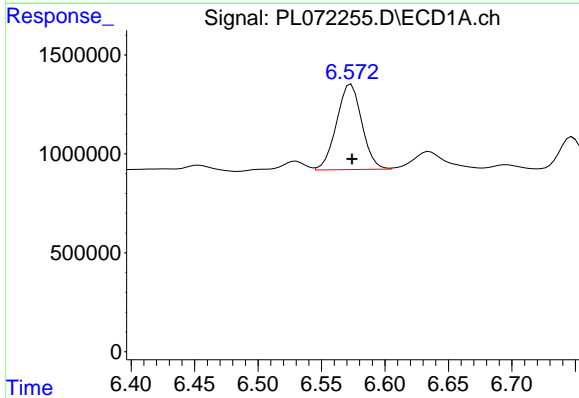
R.T.: 5.881 min
 Delta R.T.: -0.003 min
 Response: 5698589
 Conc: 276.26 ng/ml

Instrument :
 ECD_L
 ClientSampleId :
 SS-1



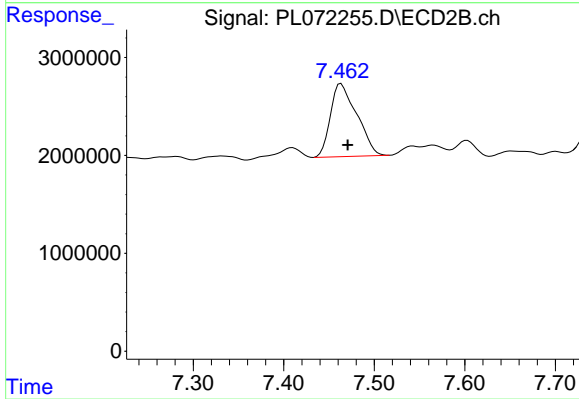
#23 Chlordane-1

R.T.: 6.874 min
 Delta R.T.: -0.002 min
 Response: 13250482
 Conc: 203.05 ng/ml



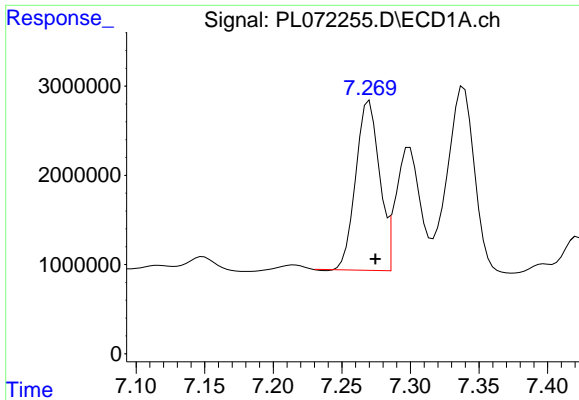
#24 Chlordane-2

R.T.: 6.573 min
 Delta R.T.: 0.000 min
 Response: 5991905
 Conc: 217.59 ng/ml



#24 Chlordane-2

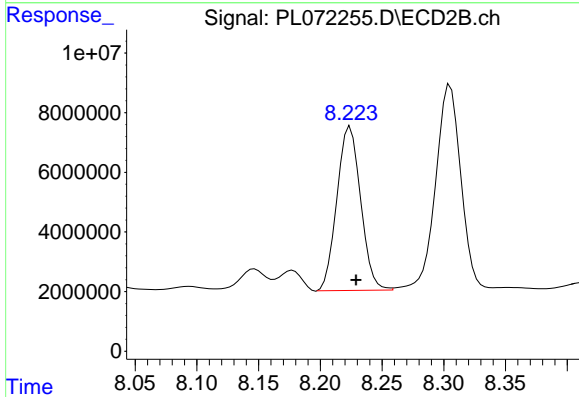
R.T.: 7.463 min
 Delta R.T.: -0.007 min
 Response: 15064047
 Conc: 215.53 ng/ml



#25 Chlordane-3

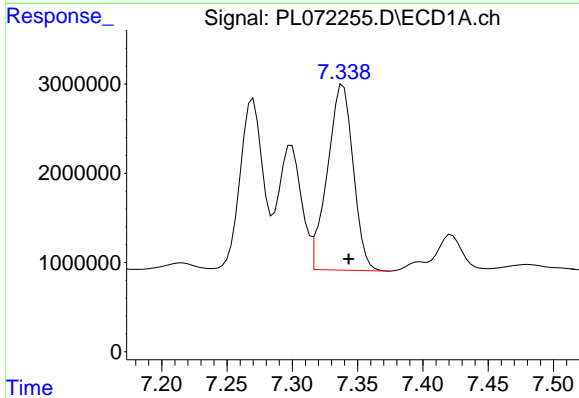
R.T.: 7.270 min
 Delta R.T.: -0.004 min
 Response: 22767518
 Conc: 297.58 ng/ml

Instrument :
 ECD_L
 ClientSampleId :
 SS-1



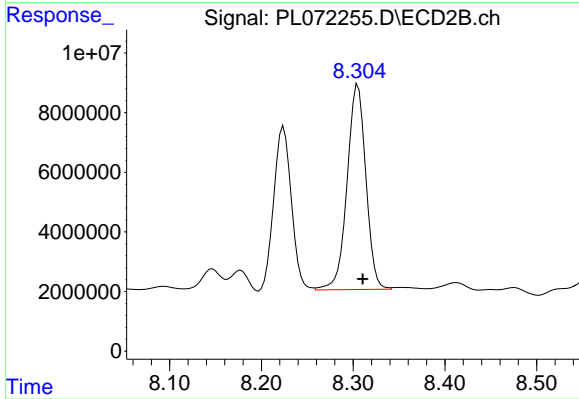
#25 Chlordane-3

R.T.: 8.224 min
 Delta R.T.: -0.005 min
 Response: 73625815
 Conc: 265.00 ng/ml



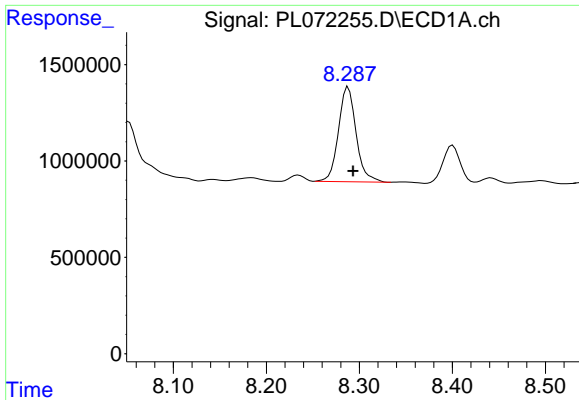
#26 Chlordane-4

R.T.: 7.339 min
 Delta R.T.: -0.004 min
 Response: 28575757
 Conc: 346.36 ng/ml



#26 Chlordane-4

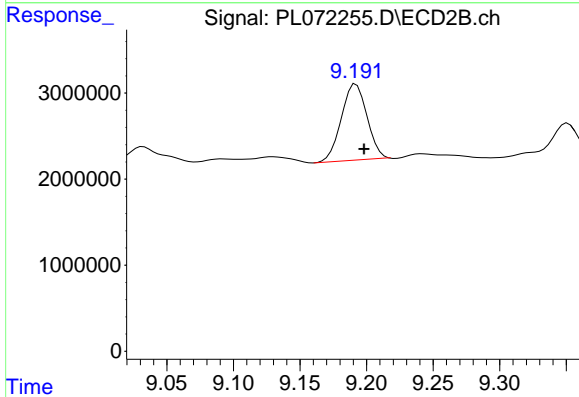
R.T.: 8.305 min
 Delta R.T.: -0.005 min
 Response: 97862943
 Conc: 294.71 ng/ml



#27 Chlordane-5

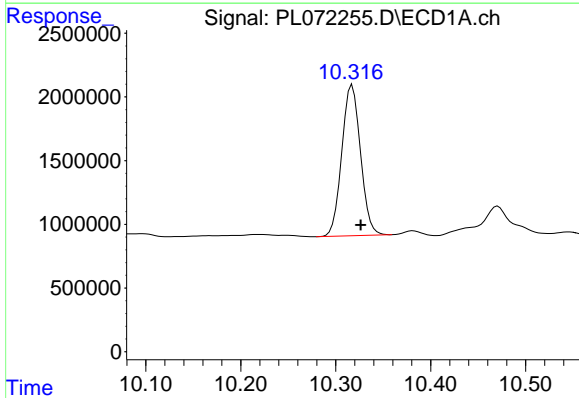
R.T.: 8.288 min
 Delta R.T.: -0.005 min
 Response: 6485848
 Conc: 222.55 ng/ml

Instrument :
 ECD_L
 ClientSampleId :
 SS-1



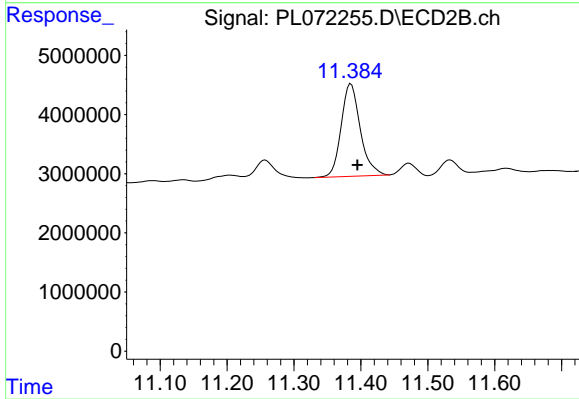
#27 Chlordane-5

R.T.: 9.192 min
 Delta R.T.: -0.006 min
 Response: 11836186
 Conc: 193.98 ng/ml



#28 Decachlorobiphenyl

R.T.: 10.317 min
 Delta R.T.: -0.009 min
 Response: 16223109
 Conc: 18.26 ng/ml



#28 Decachlorobiphenyl

R.T.: 11.385 min
 Delta R.T.: -0.010 min
 Response: 31161558
 Conc: 19.31 ng/ml