

Data Path : Z:\pestpcbsrv\HPCHEM1\ECD_L\Data\PL012720\
 Data File : PL056082.D
 Signal(s) : Signal #1: ECD1A.ch Signal #2: ECD2B.ch
 Acq On : 27 Jan 2020 15:30
 Operator : AJ\MA
 Sample : L1242-04
 Misc :
 ALS Vial : 11 Sample Multiplier: 1

Instrument :
 ECD_L
 ClientSampleId :
 20200058-COMP-4

Integration File signal 1: autoint1.e
 Integration File signal 2: autoint2.e
 Quant Time: Jan 27 17:00:38 2020
 Quant Method : Z:\pestpcbsrv\HPCHEM1\ECD_L\methods\PL012020.M
 Quant Title : GC Extractables
 QLast Update : Tue Jan 21 02:21:03 2020
 Response via : Initial Calibration
 Integrator: ChemStation

Volume Inj. : 1 µl
 Signal #1 Phase : ZB-MR2 Signal #2 Phase: ZB-MR1
 Signal #1 Info : 30M x 0.32mm x0.2 Signal #2 Info : 30M x 0.32mm x0.5µm

Compound	RT#1	RT#2	Resp#1	Resp#2	ng/ml	ng/ml

System Monitoring Compounds						
1) SA Tetrachlo...	3.489	3.965	220.1E6	65973285	22.968	23.343
28) SA Decachlor...	8.232	8.949	179.2E6	43008578	17.143	18.773
Target Compounds						
3) MA gamma-BHC...	0.000	4.628	0	1255373	N.D.	0.316 #
4) MA Heptachlor	4.519	5.151f	37159600	1653363	2.489	0.489 #
5) MB Aldrin	0.000	5.445f	0	3598895	N.D.	1.050 #
6) B beta-BHC	4.431f	4.826f	90015368	-1457505	14.027	N.D. #
8) B Heptachlo...	5.210	0.000	23885533	0	1.732	N.D. #
9) A Endosulfan I	5.550	0.000	14865483	0	1.146	N.D. #
10) B gamma-Chl...	5.446f	6.048	162.6E6	15850656	11.592	5.140 #
13) MA Dieldrin	5.779	0.000	37498216	0	2.711	N.D. #
15) B Endosulfa...	0.000	6.845	0	6354434	N.D.	2.369 #
16) A 4,4'-DDD	6.167	0.000	7074150	0	0.710	N.D. #
17) MA 4,4'-DDT	6.400	0.000	3640608	0	0.360	N.D. #
18) B Endrin a...	6.450f	6.965	5015938	2437636	0.483	1.080 #
20) A Methoxychlor	6.933	0.000	2193797	0	0.420	N.D. #
21) B Endrin ke...	0.000	7.637	0	3667129	N.D.	1.389 #
23) Chlordane-1	4.366	4.929	18405905	1618007	50.201	15.366 #
24) Chlordane-2	4.842f	5.396	6057542	4276664	13.998	38.792 #
25) Chlordane-3	5.446f	6.048	162.6E6	15850656	130.597	39.934 #
27) Chlordane-5	0.000	6.899	0	2798458	N.D.	34.158 #

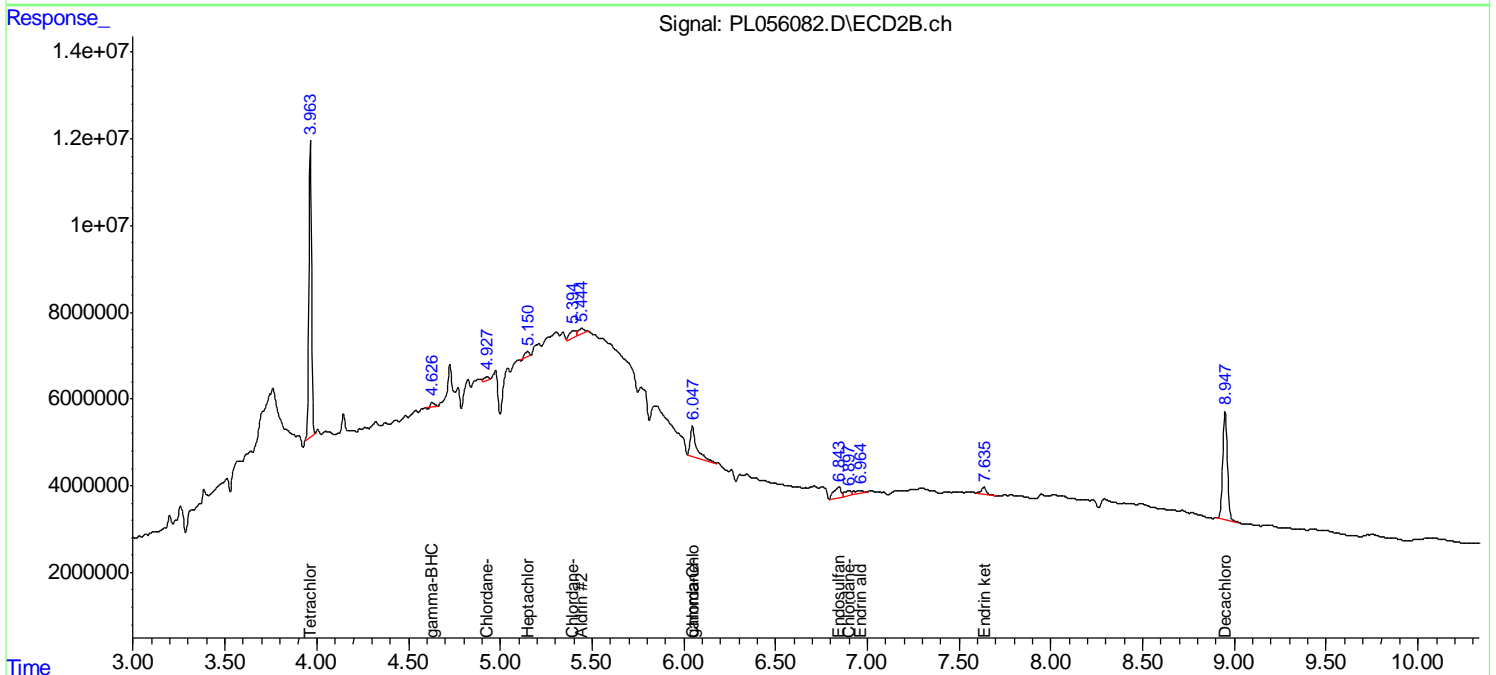
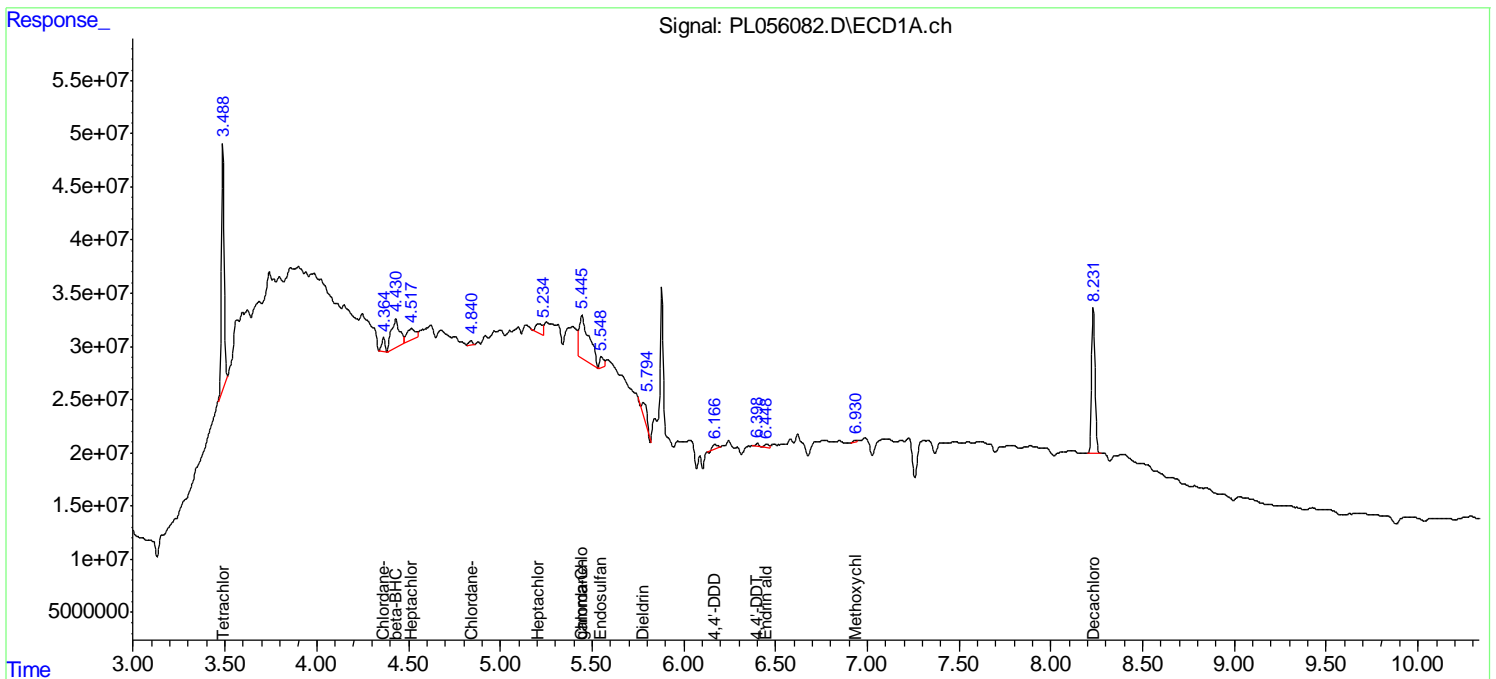
(f)=RT Delta > 1/2 Window (#)=Amounts differ by > 25% (m)=manual int.

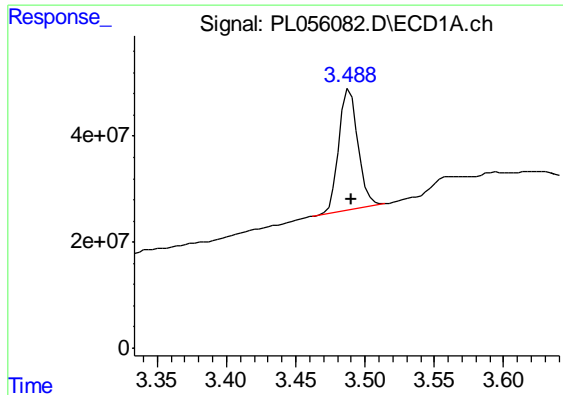
Data Path : Z:\pestpcbsrv\HPCHEM1\ECD_L\Data\PL012720\
 Data File : PL056082.D
 Signal(s) : Signal #1: ECD1A.ch Signal #2: ECD2B.ch
 Acq On : 27 Jan 2020 15:30
 Operator : AJ\MA
 Sample : L1242-04
 Misc :
 ALS Vial : 11 Sample Multiplier: 1

Instrument :
 ECD_L
 ClientSampled :
 20200058-COMP-4

Integration File signal 1: autoint1.e
 Integration File signal 2: autoint2.e
 Quant Time: Jan 27 17:00:38 2020
 Quant Method : Z:\pestpcbsrv\HPCHEM1\ECD_L\methods\PL012020.M
 Quant Title : GC Extractables
 QLast Update : Tue Jan 21 02:21:03 2020
 Response via : Initial Calibration
 Integrator: ChemStation

Volume Inj. : 1 µl
 Signal #1 Phase : ZB-MR2 Signal #2 Phase: ZB-MR1
 Signal #1 Info : 30M x 0.32mm x0.2 Signal #2 Info : 30M x 0.32mm x0.5µm

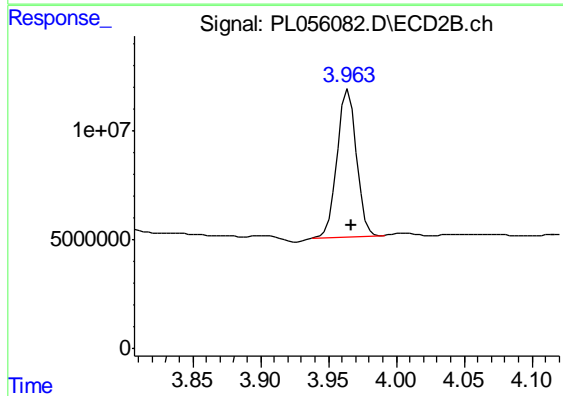




#1 Tetrachloro-m-xylene

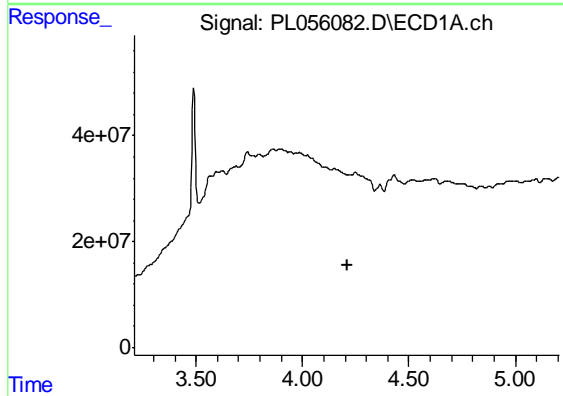
R.T.: 3.489 min
 Delta R.T.: 0.000 min
 Response: 220139815
 Conc: 22.97 ng/ml

Instrument :
 ECD_L
 ClientSampleId :
 20200058-COMP-4



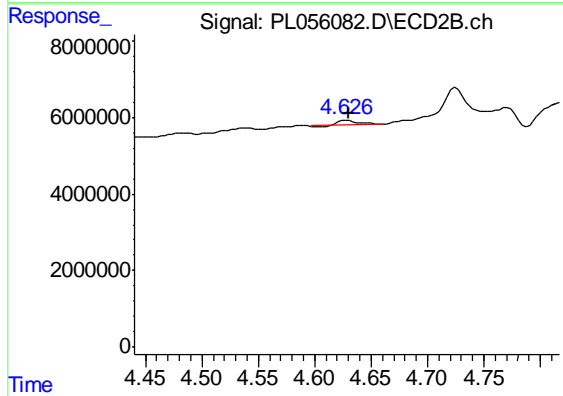
#1 Tetrachloro-m-xylene

R.T.: 3.965 min
 Delta R.T.: -0.002 min
 Response: 65973285
 Conc: 23.34 ng/ml



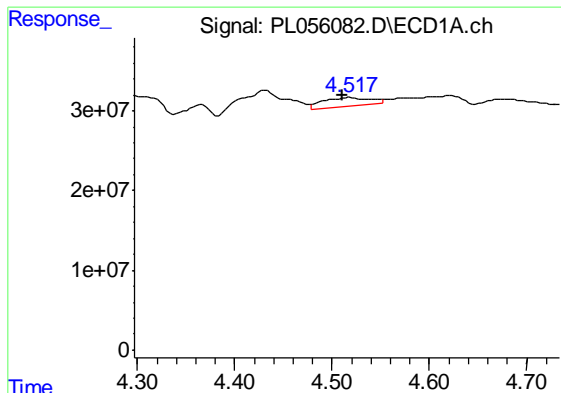
#3 gamma-BHC (Lindane)

R.T.: 0.000 min
 Exp R.T. : 4.210 min
 Response: 0
 Conc: N.D.



#3 gamma-BHC (Lindane)

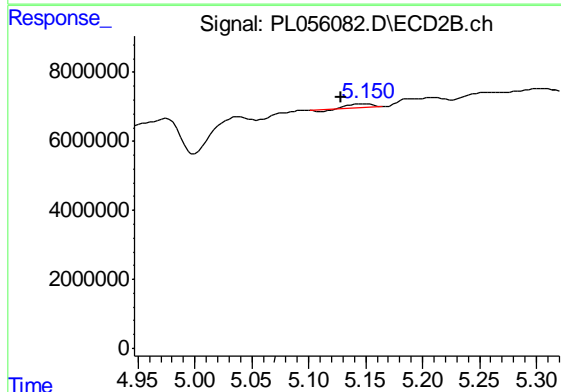
R.T.: 4.628 min
 Delta R.T.: -0.002 min
 Response: 1255373
 Conc: 0.32 ng/ml



#4 Heptachlor

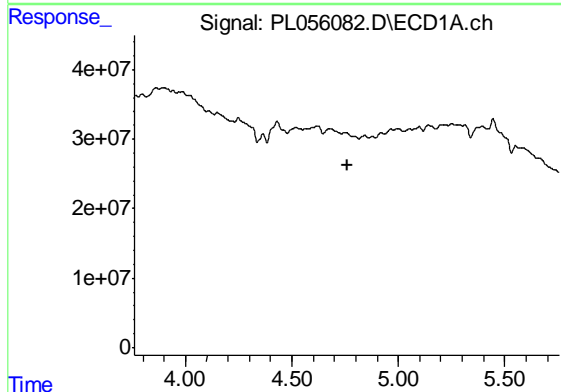
R.T.: 4.519 min
 Delta R.T.: 0.008 min
 Response: 37159600
 Conc: 2.49 ng/ml

Instrument :
 ECD_L
 ClientSampleId :
 20200058-COMP-4



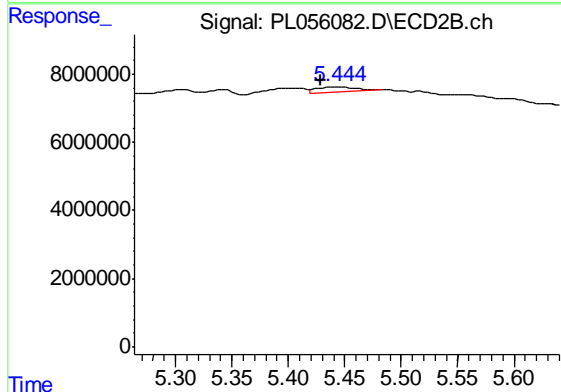
#4 Heptachlor

R.T.: 5.151 min
 Delta R.T.: 0.022 min
 Response: 1653363
 Conc: 0.49 ng/ml



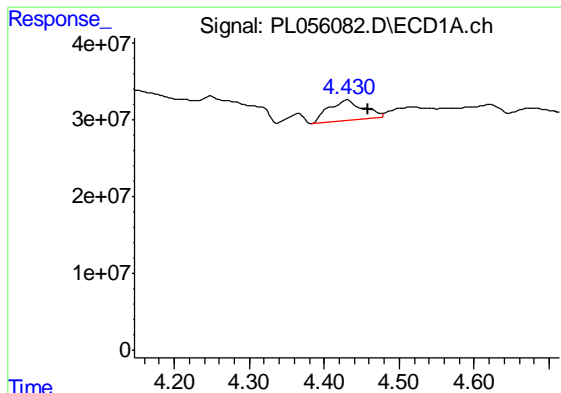
#5 Aldrin

R.T.: 0.000 min
 Exp R.T. : 4.759 min
 Response: 0
 Conc: N.D.



#5 Aldrin

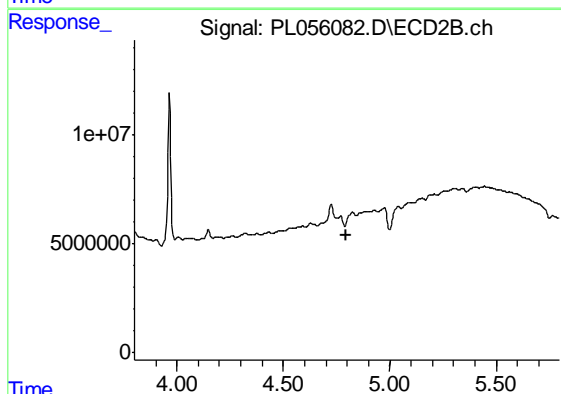
R.T.: 5.445 min
 Delta R.T.: 0.016 min
 Response: 3598895
 Conc: 1.05 ng/ml



#6 beta-BHC

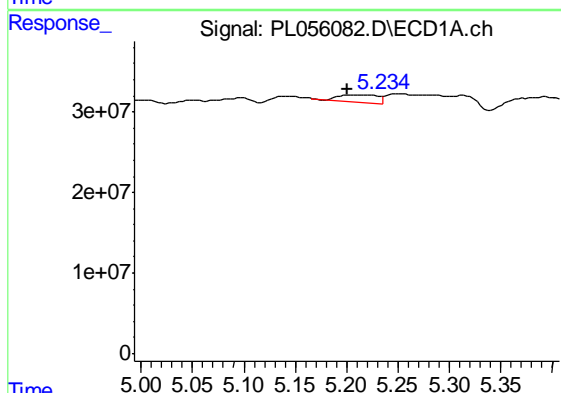
R.T.: 4.431 min
 Delta R.T.: -0.028 min
 Response: 90015368
 Conc: 14.03 ng/ml

Instrument :
 ECD_L
 ClientSampleId :
 20200058-COMP-4



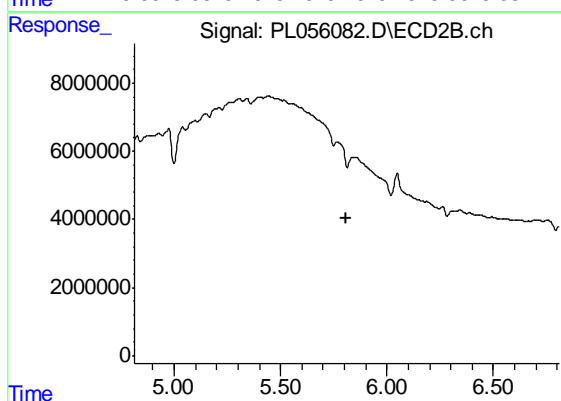
#6 beta-BHC

R.T.: 4.826 min
 Delta R.T.: 0.028 min
 Response: -1457505
 Conc: N.D.



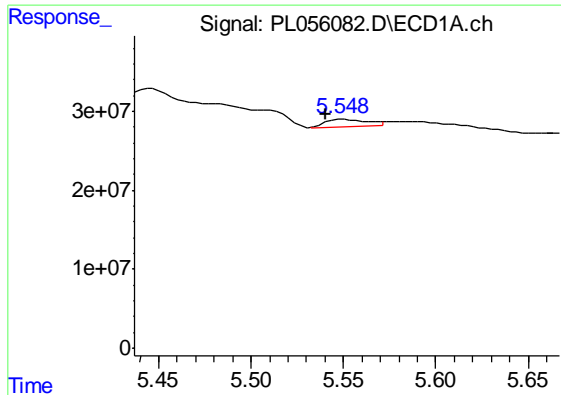
#8 Heptachlor epoxide

R.T.: 5.210 min
 Delta R.T.: 0.009 min
 Response: 23885533
 Conc: 1.73 ng/ml



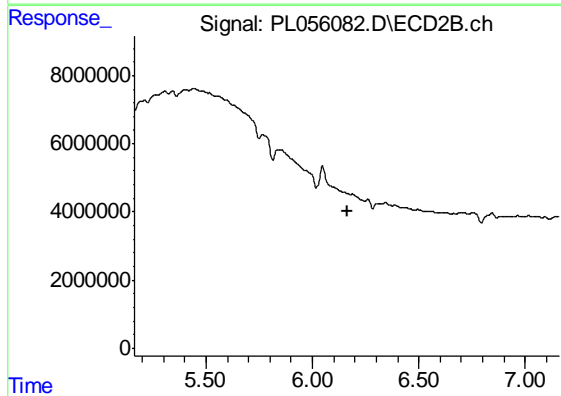
#8 Heptachlor epoxide

R.T.: 0.000 min
 Exp R.T. : 5.810 min
 Response: 0
 Conc: N.D.

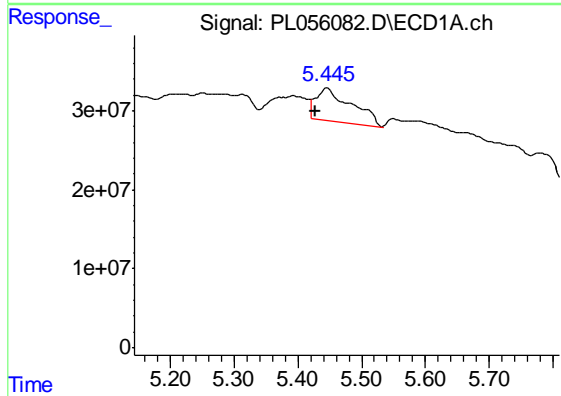


#9 Endosulfan I
 R.T.: 5.550 min
 Delta R.T.: 0.010 min
 Response: 14865483
 Conc: 1.15 ng/ml

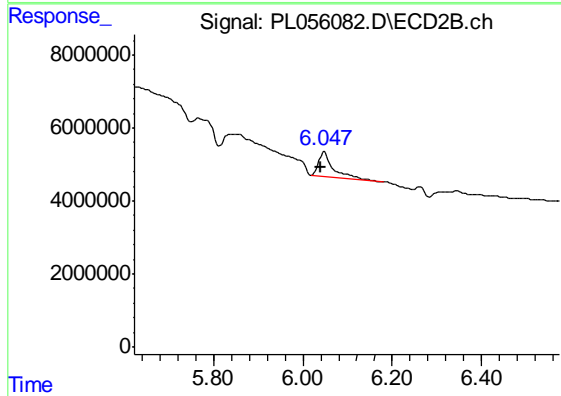
Instrument :
 ECD_L
 ClientSampleId :
 20200058-COMP-4



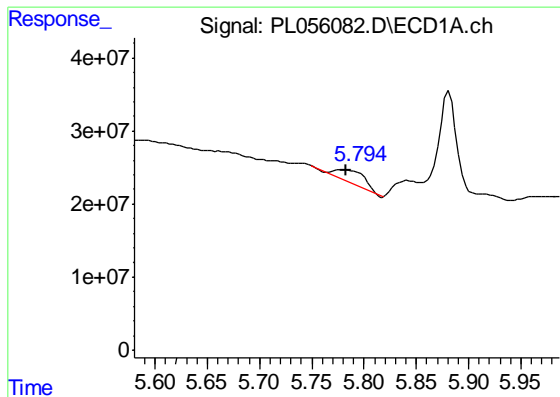
#9 Endosulfan I
 R.T.: 0.000 min
 Exp R.T. : 6.162 min
 Response: 0
 Conc: N.D.



#10 gamma-Chlordane
 R.T.: 5.446 min
 Delta R.T.: 0.018 min
 Response: 162631802
 Conc: 11.59 ng/ml

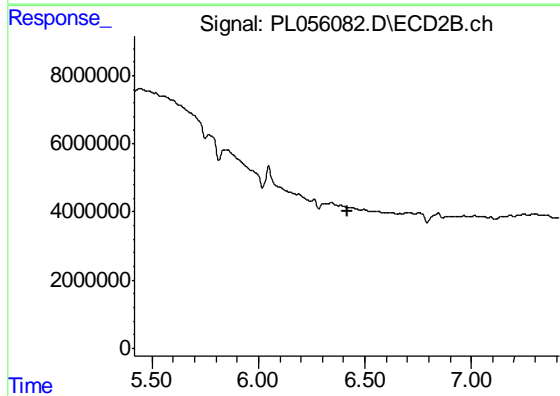


#10 gamma-Chlordane
 R.T.: 6.048 min
 Delta R.T.: 0.007 min
 Response: 15850656
 Conc: 5.14 ng/ml

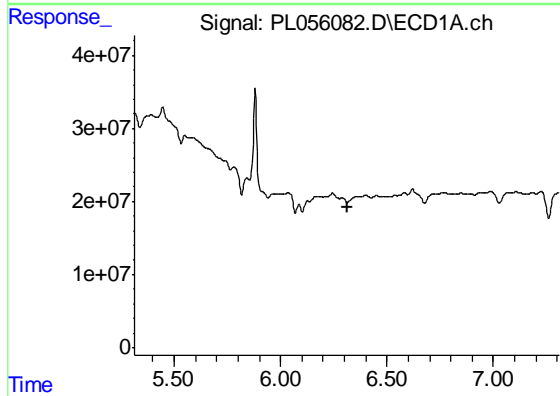


#13 Dieldrin
 R.T.: 5.779 min
 Delta R.T.: -0.003 min
 Response: 37498216
 Conc: 2.71 ng/ml

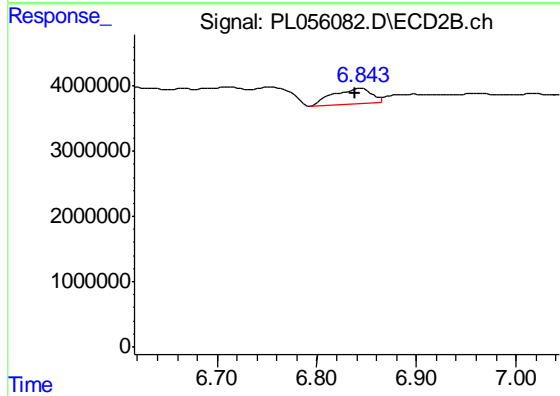
Instrument :
 ECD_L
 ClientSampleId :
 20200058-COMP-4



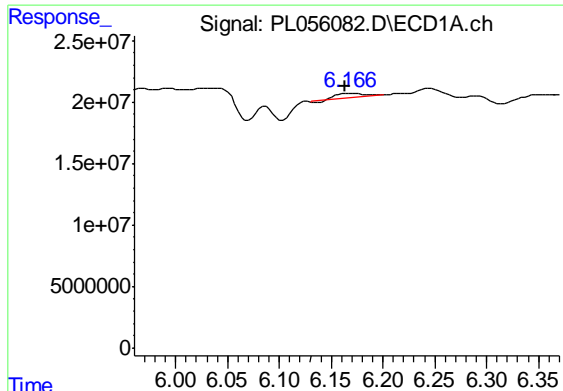
#13 Dieldrin
 R.T.: 0.000 min
 Exp R.T. : 6.416 min
 Response: 0
 Conc: N.D.



#15 Endosulfan II
 R.T.: 0.000 min
 Exp R.T. : 6.312 min
 Response: 0
 Conc: N.D.



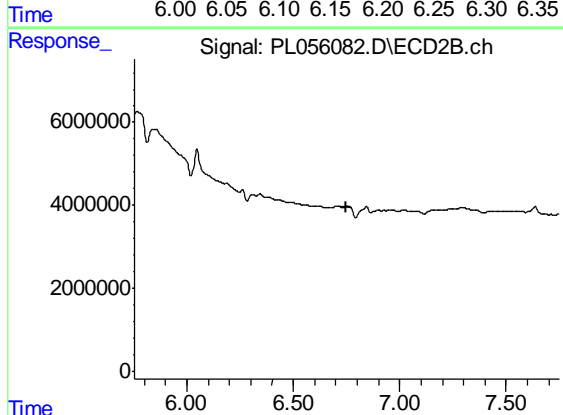
#15 Endosulfan II
 R.T.: 6.845 min
 Delta R.T.: 0.005 min
 Response: 6354434
 Conc: 2.37 ng/ml



#16 4,4'-DDD

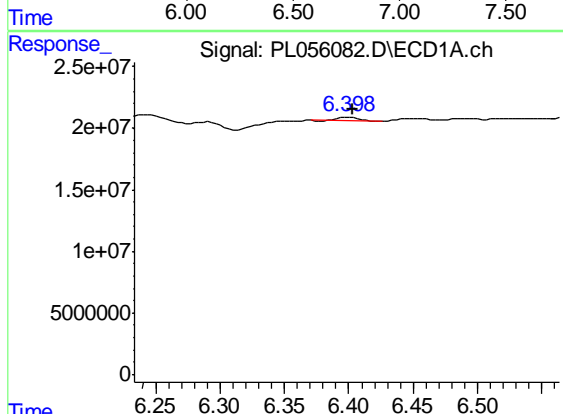
R.T.: 6.167 min
 Delta R.T.: 0.003 min
 Response: 7074150
 Conc: 0.71 ng/ml

Instrument :
 ECD_L
 ClientSampleId :
 20200058-COMP-4



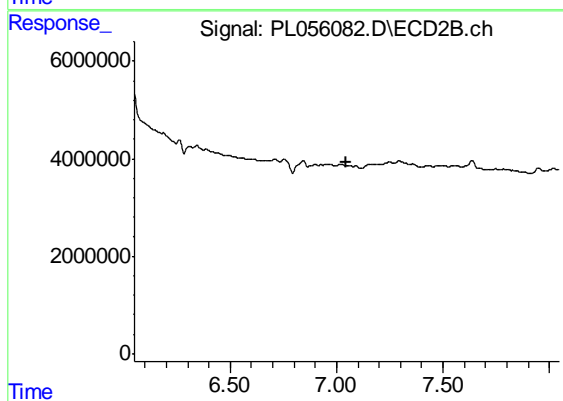
#16 4,4'-DDD

R.T.: 0.000 min
 Exp R.T. : 6.752 min
 Response: 0
 Conc: N.D.



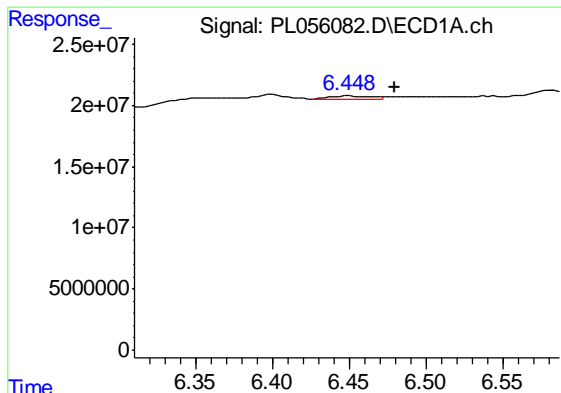
#17 4,4'-DDT

R.T.: 6.400 min
 Delta R.T.: -0.003 min
 Response: 3640608
 Conc: 0.36 ng/ml



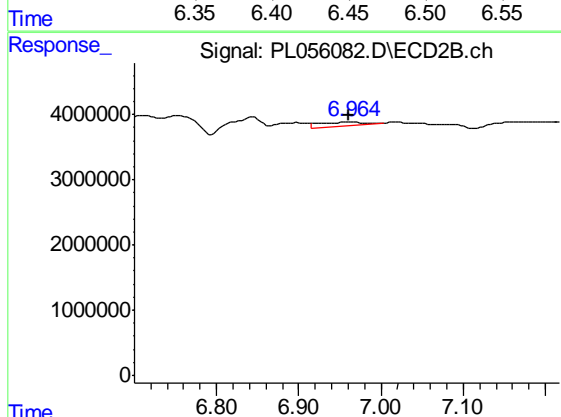
#17 4,4'-DDT

R.T.: 0.000 min
 Exp R.T. : 7.047 min
 Response: 0
 Conc: N.D.

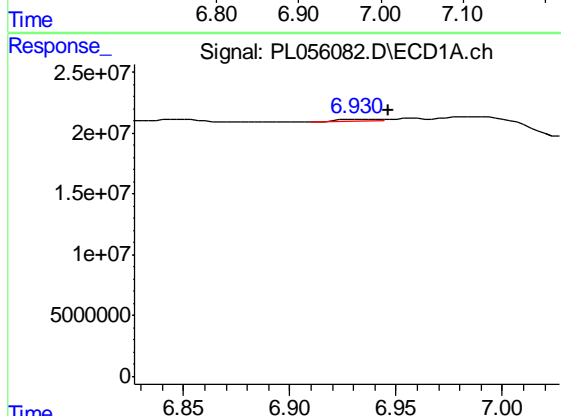


#18 Endrin aldehyde
 R.T.: 6.450 min
 Delta R.T.: -0.030 min
 Response: 5015938
 Conc: 0.48 ng/ml

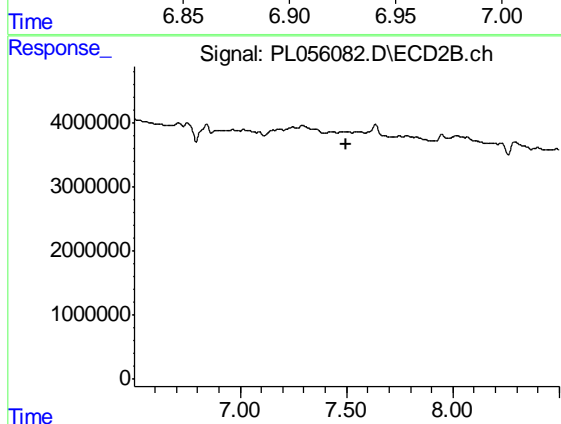
Instrument :
 ECD_L
 ClientSampleId :
 20200058-COMP-4



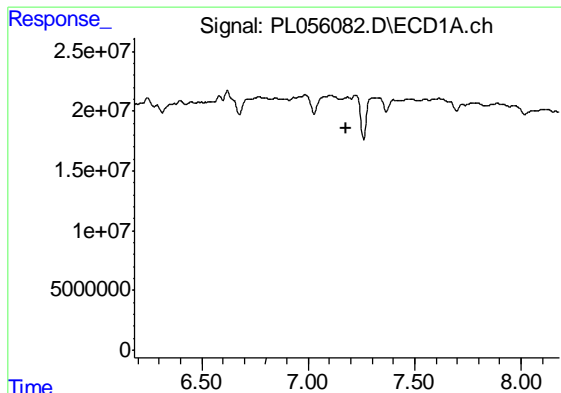
#18 Endrin aldehyde
 R.T.: 6.965 min
 Delta R.T.: 0.004 min
 Response: 2437636
 Conc: 1.08 ng/ml



#20 Methoxychlor
 R.T.: 6.933 min
 Delta R.T.: -0.013 min
 Response: 2193797
 Conc: 0.42 ng/ml



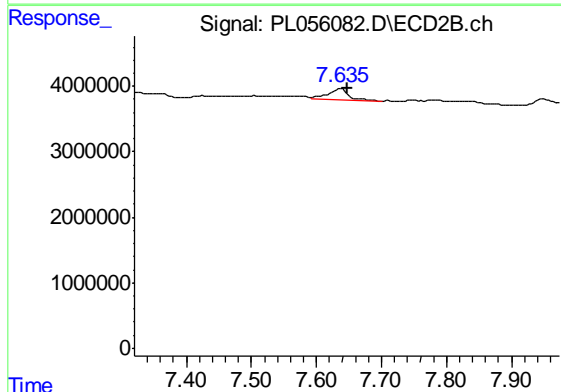
#20 Methoxychlor
 R.T.: 0.000 min
 Exp R.T. : 7.501 min
 Response: 0
 Conc: N.D.



#21 Endrin ketone

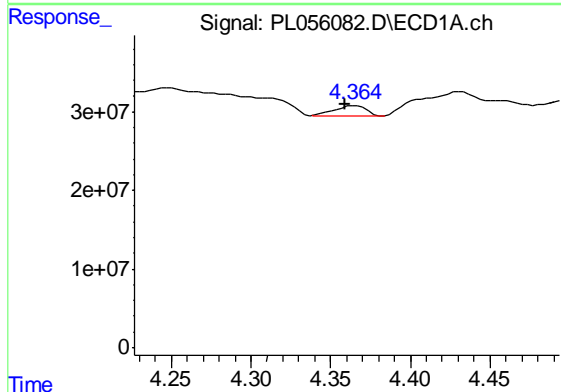
R.T.: 0.000 min
 Exp R.T. : 7.182 min
 Response: 0
 Conc: N.D.

Instrument :
 ECD_L
 ClientSampleId :
 20200058-COMP-4



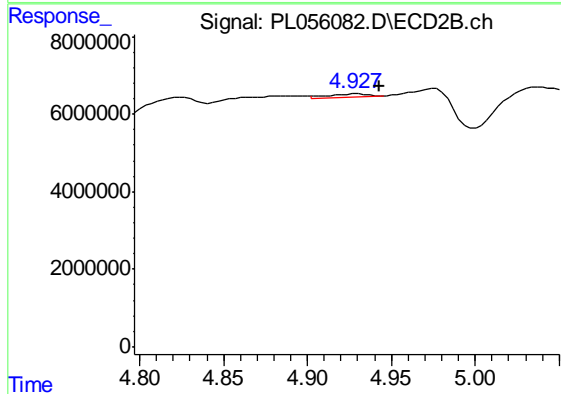
#21 Endrin ketone

R.T.: 7.637 min
 Delta R.T.: -0.012 min
 Response: 3667129
 Conc: 1.39 ng/ml



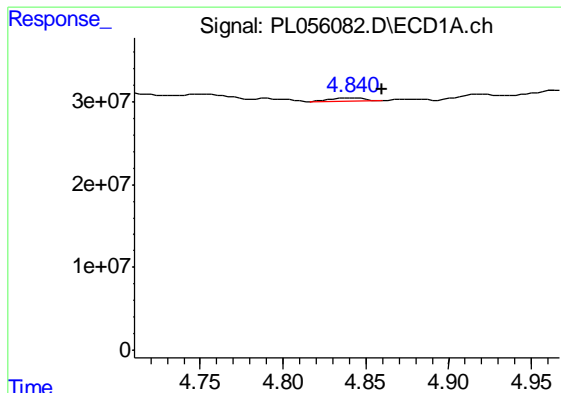
#23 Chlordane-1

R.T.: 4.366 min
 Delta R.T.: 0.006 min
 Response: 18405905
 Conc: 50.20 ng/ml



#23 Chlordane-1

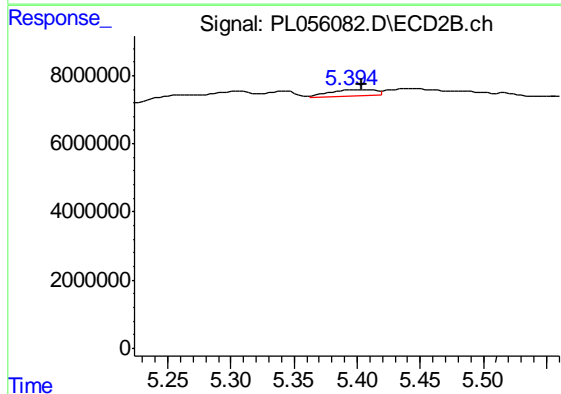
R.T.: 4.929 min
 Delta R.T.: -0.014 min
 Response: 1618007
 Conc: 15.37 ng/ml



#24 Chlordane-2

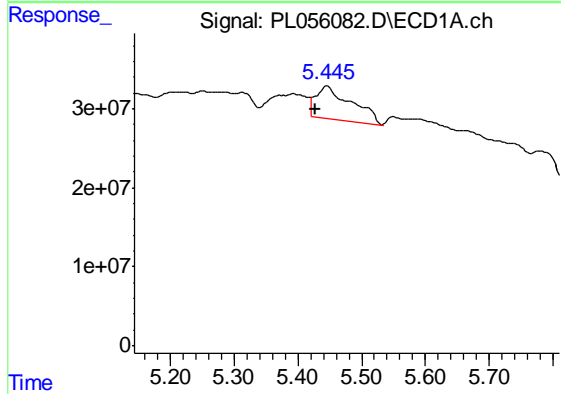
R.T.: 4.842 min
 Delta R.T.: -0.018 min
 Response: 6057542
 Conc: 14.00 ng/ml

Instrument :
 ECD_L
 ClientSampleId :
 20200058-COMP-4



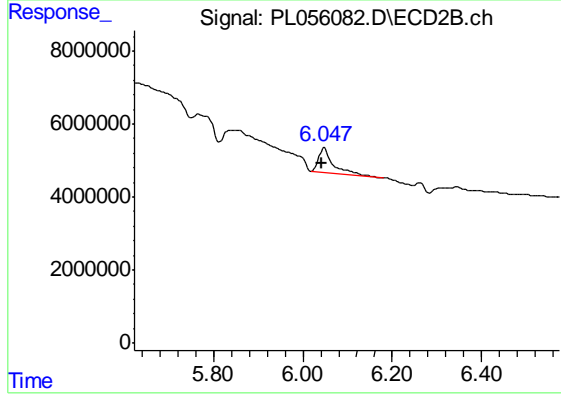
#24 Chlordane-2

R.T.: 5.396 min
 Delta R.T.: -0.007 min
 Response: 4276664
 Conc: 38.79 ng/ml



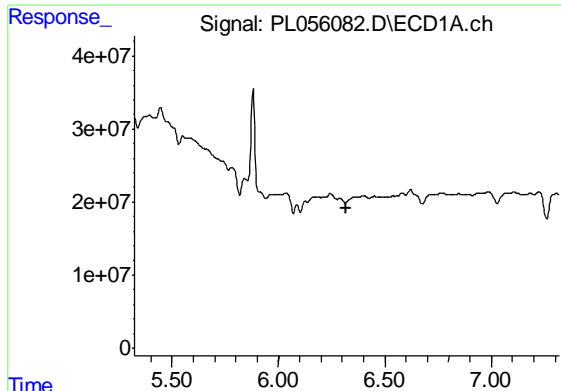
#25 Chlordane-3

R.T.: 5.446 min
 Delta R.T.: 0.018 min
 Response: 162631802
 Conc: 130.60 ng/ml



#25 Chlordane-3

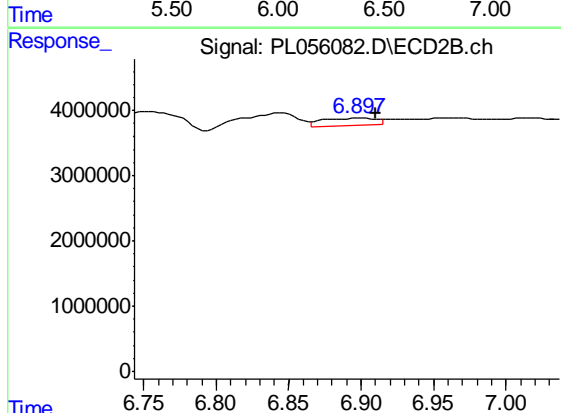
R.T.: 6.048 min
 Delta R.T.: 0.007 min
 Response: 15850656
 Conc: 39.93 ng/ml



#27 Chlordane-5

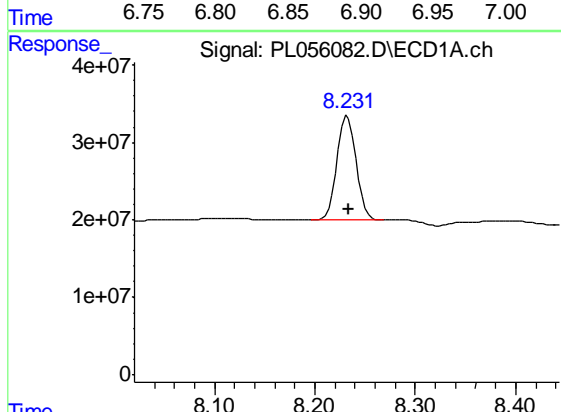
R.T.: 0.000 min
 Exp R.T. : 6.322 min
 Response: 0
 Conc: N.D.

Instrument :
 ECD_L
 ClientSampleId :
 20200058-COMP-4



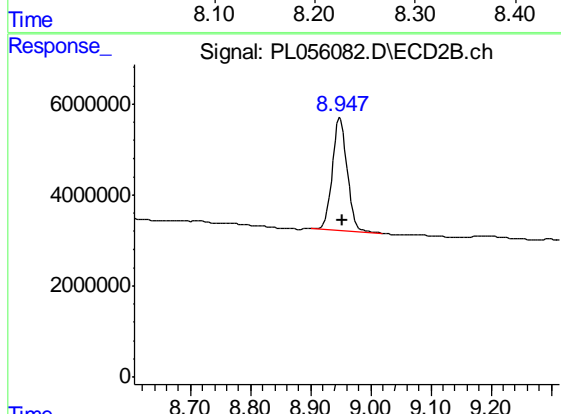
#27 Chlordane-5

R.T.: 6.899 min
 Delta R.T.: -0.011 min
 Response: 2798458
 Conc: 34.16 ng/ml



#28 Decachlorobiphenyl

R.T.: 8.232 min
 Delta R.T.: 0.000 min
 Response: 179237595
 Conc: 17.14 ng/ml



#28 Decachlorobiphenyl

R.T.: 8.949 min
 Delta R.T.: -0.004 min
 Response: 43008578
 Conc: 18.77 ng/ml