

Data Path : Z:\pestpcbsrv\HPCHEM1\ECD_L\Data\PL012723\
 Data File : PL080568.D
 Signal(s) : Signal #1: ECD1A.ch Signal #2: ECD2B.ch
 Acq On : 27 Jan 2023 18:11
 Operator : AR\AJ
 Sample : 01328-06
 Misc :
 ALS Vial : 18 Sample Multiplier: 1

Integration File signal 1: autoint1.e
 Integration File signal 2: autoint2.e
 Quant Time: Jan 27 23:50:12 2023
 Quant Method : Z:\pestpcbsrv\HPCHEM1\ECD_L\methods\PL012023.M
 Quant Title : GC Extractables
 QLast Update : Sun Jan 22 23:56:48 2023
 Response via : Initial Calibration
 Integrator: ChemStation

Volume Inj. : 1 µl
 Signal #1 Phase : ZB-MR2 Signal #2 Phase: ZB-MR1
 Signal #1 Info : 30M x 0.32mm x0.2 Signal #2 Info : 30M x 0.32mm x0.5µm

	Compound	RT#1	RT#2	Resp#1	Resp#2	ng/ml	ng/ml

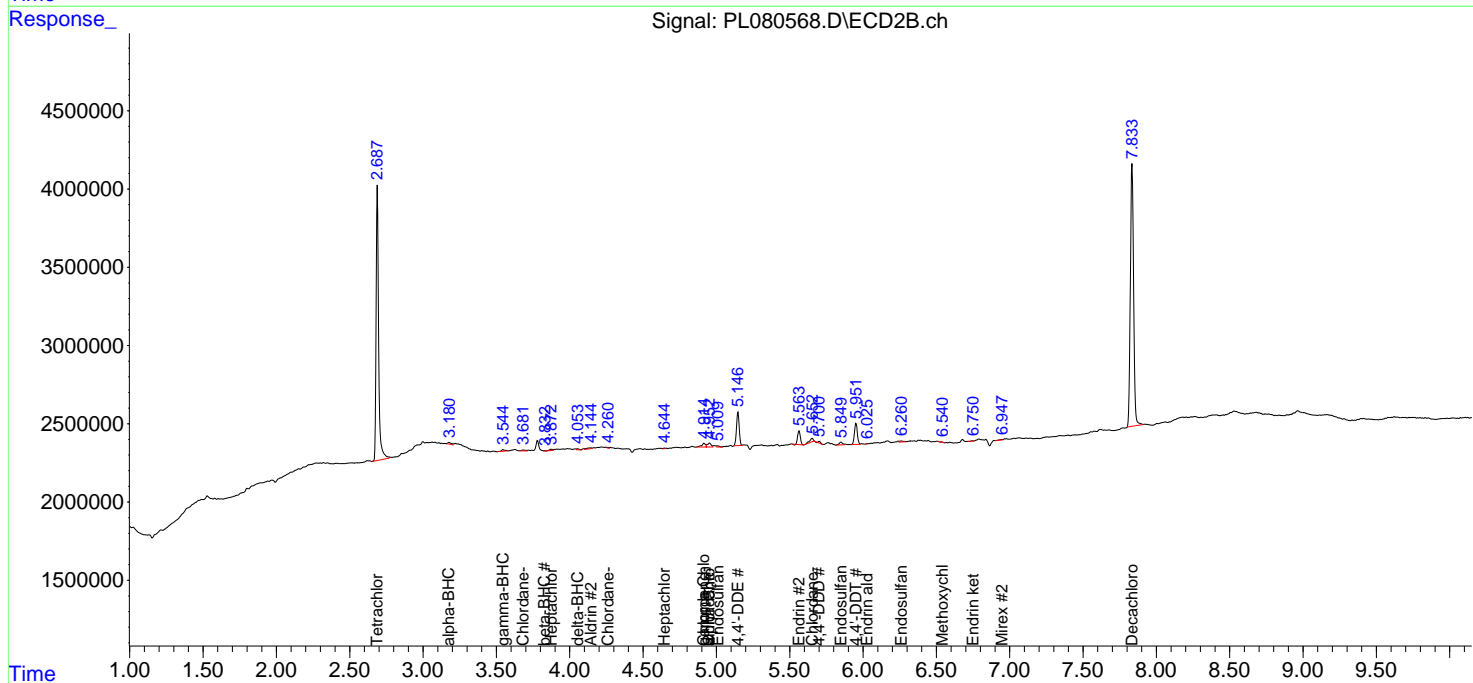
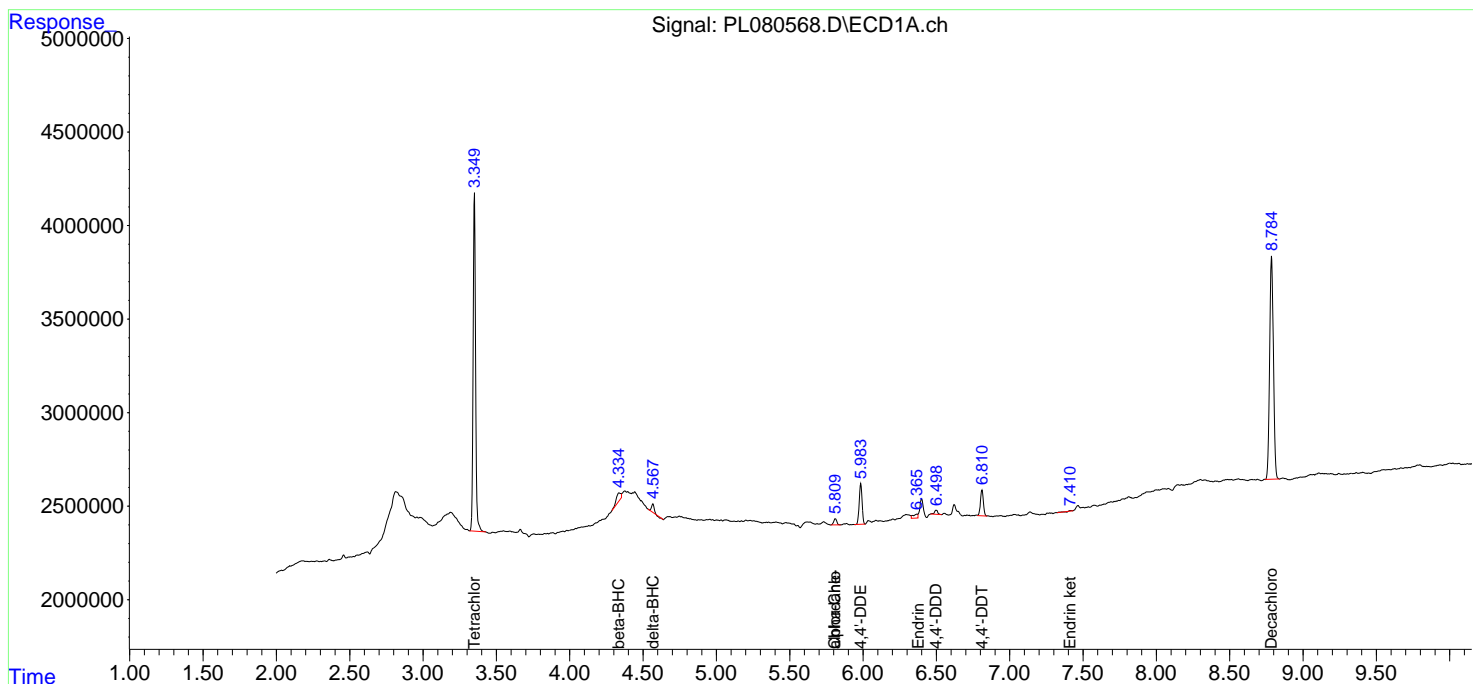
System Monitoring Compounds							
1)	SA Tetrachlo...	3.351	2.688	21279679	21024134	9.921	9.572
2)	SA Decachlor...	8.786	7.834	21266000	25565697	12.147	10.730
Target Compounds							
2)	A alpha-BHC	0.000	3.177	0	181281	N.D.	0.057 #
3)	MA gamma-BHC...	0.000	3.545f	0	172520	N.D.	0.058 #
4)	MA Heptachlor	0.000	3.873	0	130276	N.D.	0.041 #
5)	MB Aldrin	0.000	4.145	0	147256	N.D.	0.050 #
6)	B beta-BHC	4.337	3.832f	871913	11556	0.639	0.009 #
7)	B delta-BHC	4.568	4.055	552417	65204	0.191	0.023 #
8)	B Heptachlo...	0.000	4.645	0	26048	N.D.	0.009 #
9)	A Endosulfan I	0.000	5.010	0	76286	N.D.	0.029 #
10)	B gamma-Chl...	0.000	4.915f	0	412348	N.D.	0.145 #
11)	B alpha-Chl...	5.811	4.953	480629	443798	0.190	0.155
12)	B 4,4'-DDE	5.985	5.147	2980631	2743413	1.338	1.163
14)	MA Endrin	6.368	5.564	460411	1133312	0.213	0.488 #
15)	B Endosulfa...	0.000	5.850	0	268121	N.D.	0.129 #
16)	A 4,4'-DDD	6.500	5.701	327140	132315	0.179	0.070 #
17)	MA 4,4'-DDT	6.811	5.952	1883632	1856906	0.907	0.884
18)	B Endrin al...	0.000	6.027	0	8393	N.D.	0.005 #
19)	B Endosulfa...	0.000	6.261	0	123356	N.D.	0.053 #
20)	A Methoxychlor	0.000	6.540	0	21461	N.D.	0.018 #
21)	B Endrin ke...	7.413	6.751	33881	4782	0.015	0.002 #
22)	Mirex	0.000	6.949	0	40365	N.D.	0.018 #
23)	Chlordane-1	0.000	3.683	0	109898	N.D.	1.350 #
24)	Chlordane-2	0.000	4.261	0	36911	N.D.	0.409 #
25)	Chlordane-3	0.000	4.915f	0	412348	N.D.	1.563 #
26)	Chlordane-4	5.811	4.953	480629	443798	1.114	1.648 #
27)	Chlordane-5	0.000	5.654f	0	373730	N.D.	5.252 #

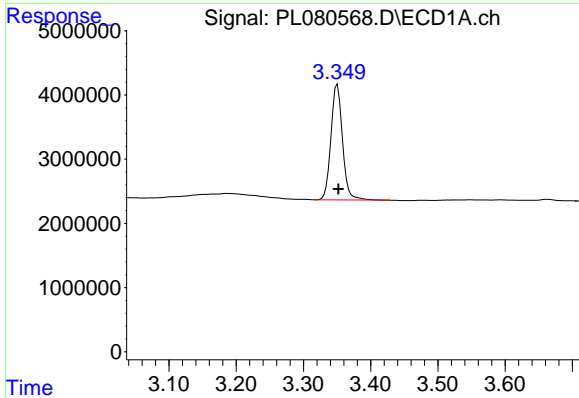
(f)=RT Delta > 1/2 Window (#)=Amounts differ by > 25% (m)=manual int.

Data Path : Z:\pestpcbsrv\HPCHEM1\ECD_L\Data\PL012723\
 Data File : PL080568.D
 Signal(s) : Signal #1: ECD1A.ch Signal #2: ECD2B.ch
 Acq On : 27 Jan 2023 18:11
 Operator : AR\AJ
 Sample : 01328-06
 Misc :
 ALS Vial : 18 Sample Multiplier: 1

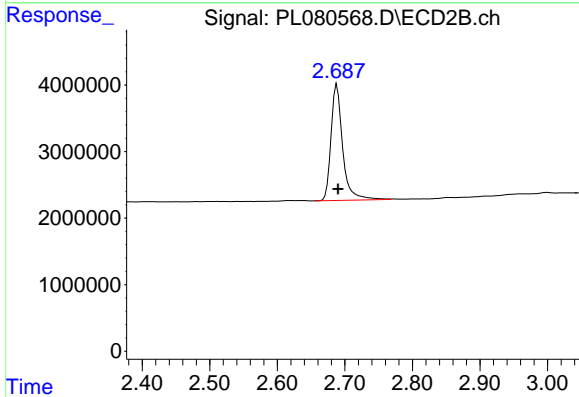
Integration File signal 1: autoint1.e
 Integration File signal 2: autoint2.e
 Quant Time: Jan 27 23:50:12 2023
 Quant Method : Z:\pestpcbsrv\HPCHEM1\ECD_L\methods\PL012023.M
 Quant Title : GC Extractables
 QLast Update : Sun Jan 22 23:56:48 2023
 Response via : Initial Calibration
 Integrator: ChemStation

Volume Inj. : 1 µl
 Signal #1 Phase : ZB-MR2 Signal #2 Phase: ZB-MR1
 Signal #1 Info : 30M x 0.32mm x0.2 Signal #2 Info : 30M x 0.32mm x0.5µm

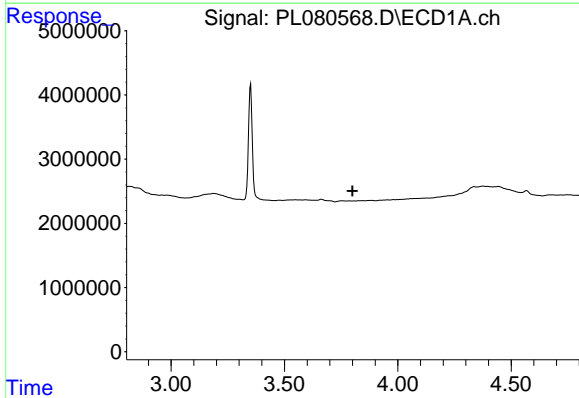




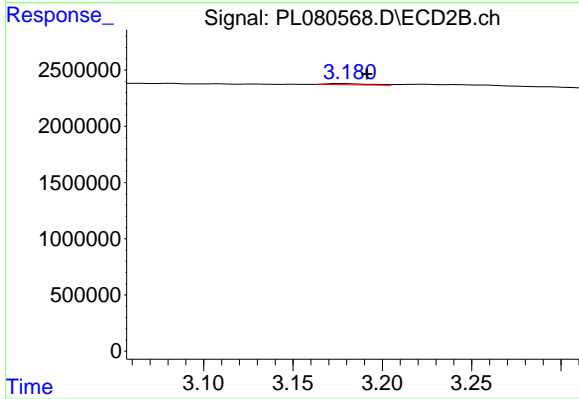
#1 Tetrachloro-m-xylene
 R.T.: 3.351 min
 Delta R.T.: -0.001 min
 Response: 21279679
 Conc: 9.92 ng/ml



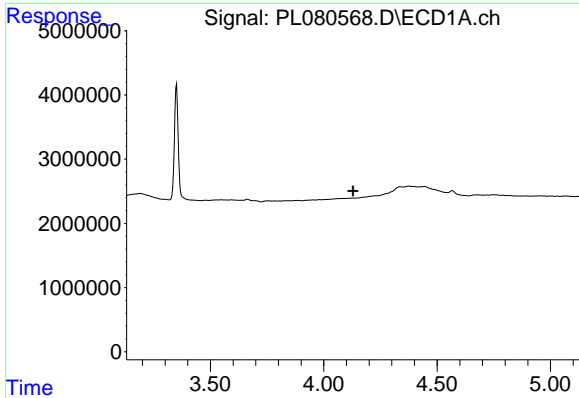
#1 Tetrachloro-m-xylene
 R.T.: 2.688 min
 Delta R.T.: -0.001 min
 Response: 21024134
 Conc: 9.57 ng/ml



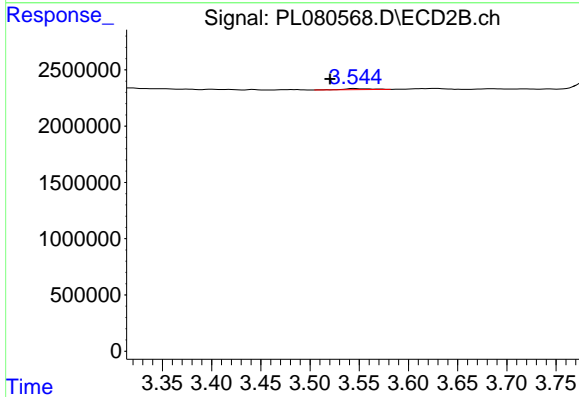
#2 alpha-BHC
 R.T.: 0.000 min
 Exp R.T. : 3.801 min
 Response: 0
 Conc: N.D.



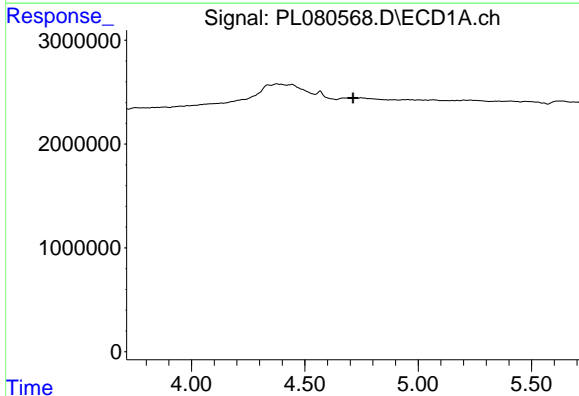
#2 alpha-BHC
 R.T.: 3.177 min
 Delta R.T.: -0.015 min
 Response: 181281
 Conc: 0.06 ng/ml



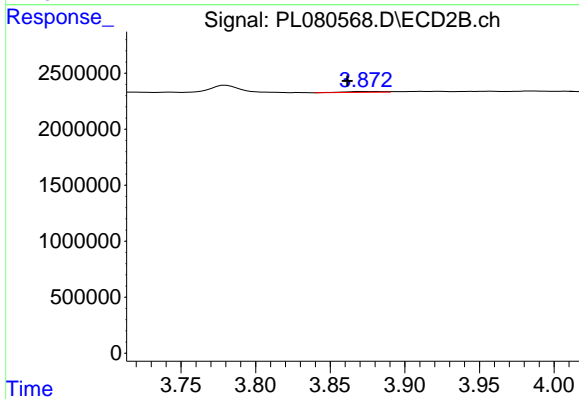
#3 gamma-BHC (Lindane)
 R.T.: 0.000 min
 Exp R.T. : 4.129 min
 Response: 0
 Conc: N.D.



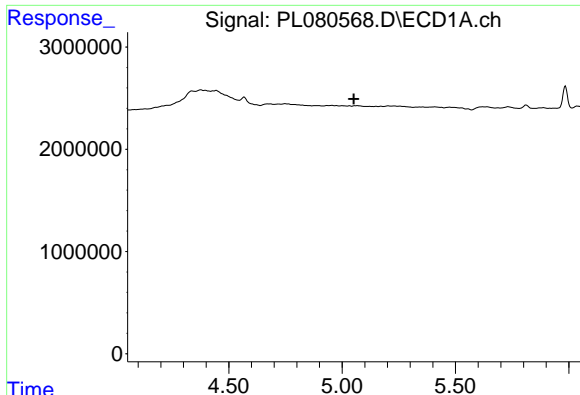
#3 gamma-BHC (Lindane)
 R.T.: 3.545 min
 Delta R.T.: 0.025 min
 Response: 172520
 Conc: 0.06 ng/ml



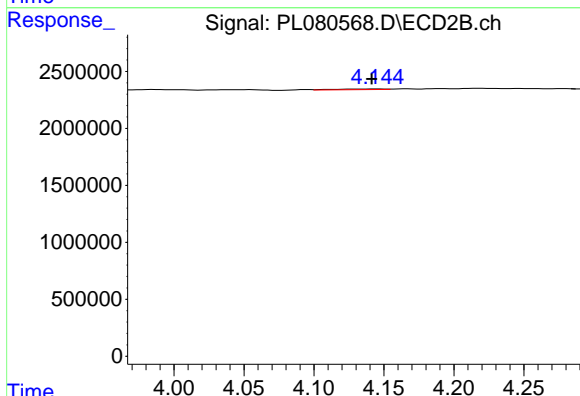
#4 Heptachlor
 R.T.: 0.000 min
 Exp R.T. : 4.713 min
 Response: 0
 Conc: N.D.



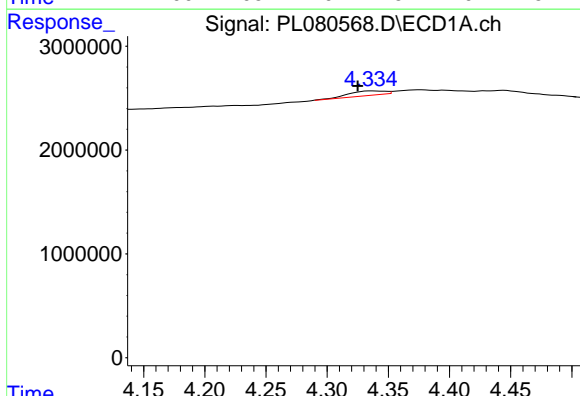
#4 Heptachlor
 R.T.: 3.873 min
 Delta R.T.: 0.011 min
 Response: 130276
 Conc: 0.04 ng/ml



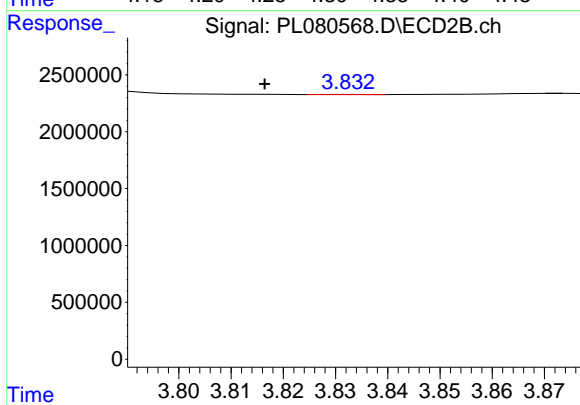
#5 Aldrin
 R.T.: 0.000 min
 Exp R.T.: 5.052 min
 Response: 0
 Conc: N.D.



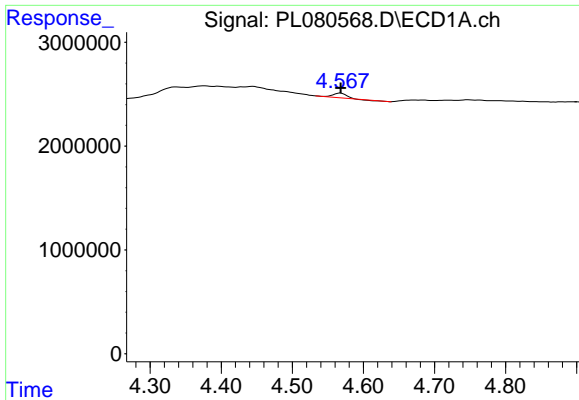
#5 Aldrin
 R.T.: 4.145 min
 Delta R.T.: 0.004 min
 Response: 147256
 Conc: 0.05 ng/ml



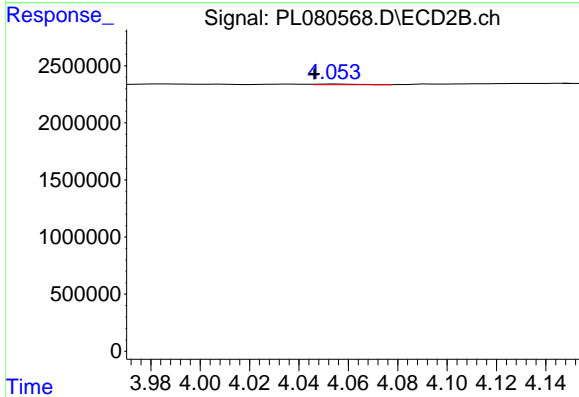
#6 beta-BHC
 R.T.: 4.337 min
 Delta R.T.: 0.012 min
 Response: 871913
 Conc: 0.64 ng/ml



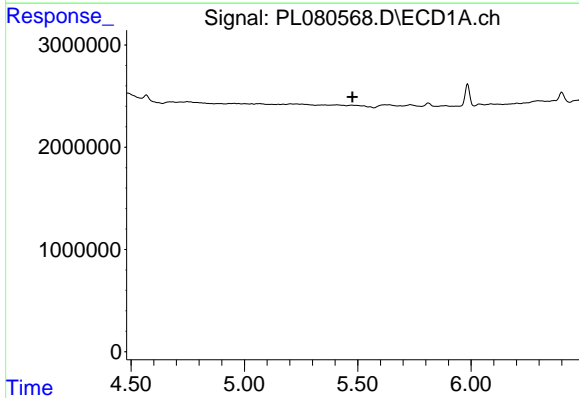
#6 beta-BHC
 R.T.: 3.832 min
 Delta R.T.: 0.015 min
 Response: 11556
 Conc: 0.01 ng/ml



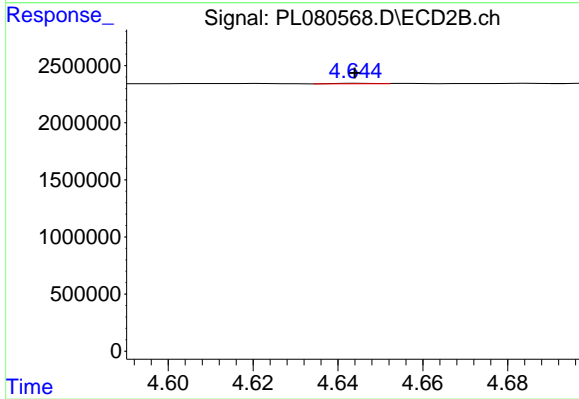
#7 delta-BHC
 R.T.: 4.568 min
 Delta R.T.: 0.000 min
 Response: 552417
 Conc: 0.19 ng/ml



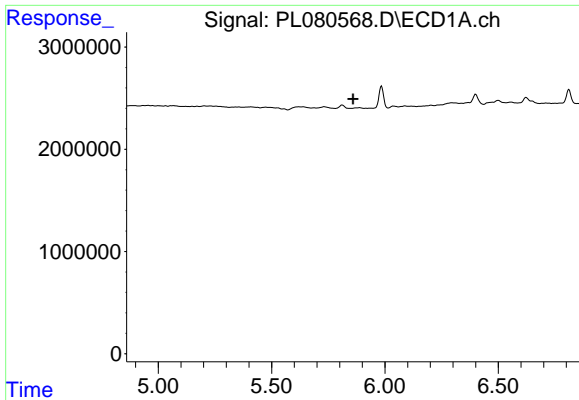
#7 delta-BHC
 R.T.: 4.055 min
 Delta R.T.: 0.008 min
 Response: 65204
 Conc: 0.02 ng/ml



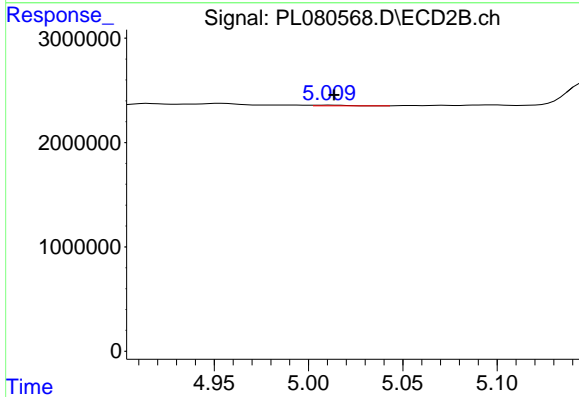
#8 Heptachlor epoxide
 R.T.: 0.000 min
 Exp R.T. : 5.477 min
 Response: 0
 Conc: N.D.



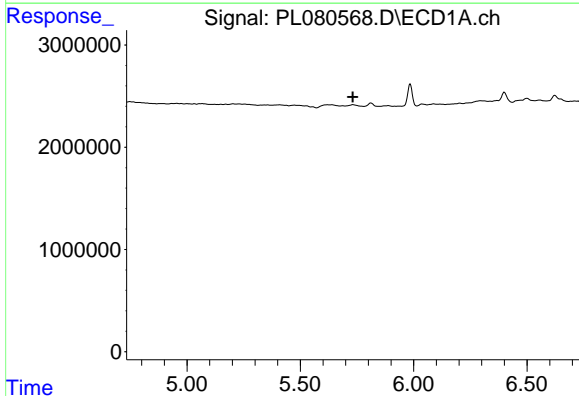
#8 Heptachlor epoxide
 R.T.: 4.645 min
 Delta R.T.: 0.001 min
 Response: 26048
 Conc: 0.01 ng/ml



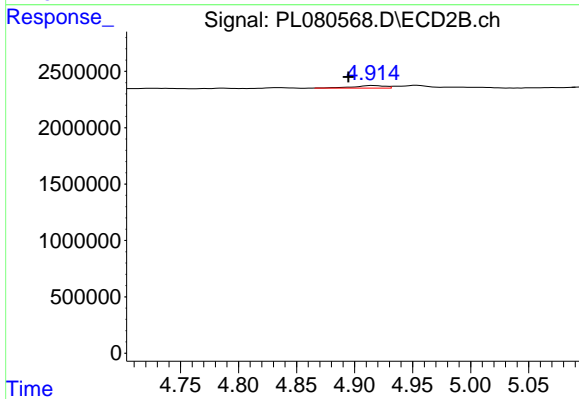
#9 Endosulfan I
 R.T.: 0.000 min
 Exp R.T. : 5.859 min
 Response: 0
 Conc: N.D.



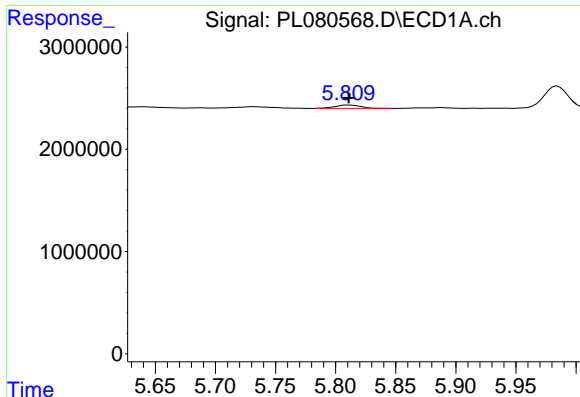
#9 Endosulfan I
 R.T.: 5.010 min
 Delta R.T.: -0.003 min
 Response: 76286
 Conc: 0.03 ng/ml



#10 gamma-Chlordane
 R.T.: 0.000 min
 Exp R.T. : 5.732 min
 Response: 0
 Conc: N.D.

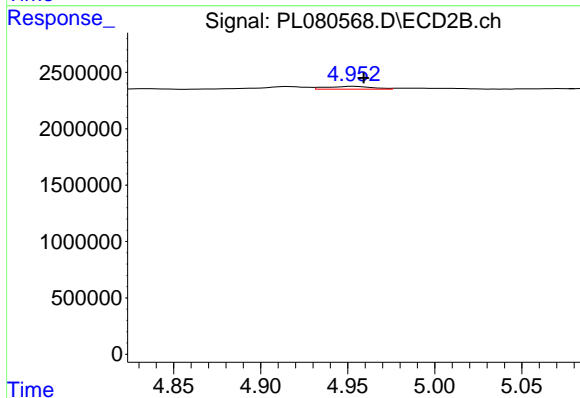


#10 gamma-Chlordane
 R.T.: 4.915 min
 Delta R.T.: 0.021 min
 Response: 412348
 Conc: 0.15 ng/ml



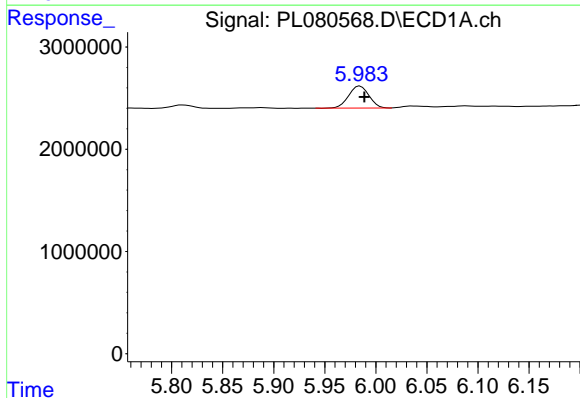
#11 alpha-Chlordane

R.T.: 5.811 min
 Delta R.T.: 0.000 min
 Response: 480629
 Conc: 0.19 ng/ml



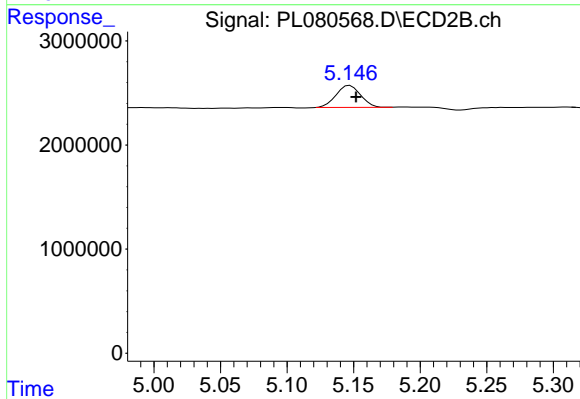
#11 alpha-Chlordane

R.T.: 4.953 min
 Delta R.T.: -0.006 min
 Response: 443798
 Conc: 0.15 ng/ml



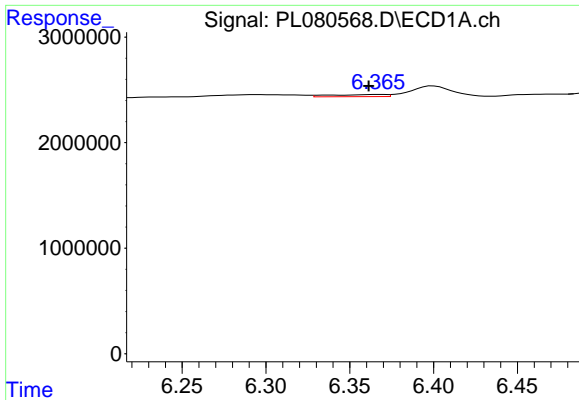
#12 4,4'-DDE

R.T.: 5.985 min
 Delta R.T.: -0.004 min
 Response: 2980631
 Conc: 1.34 ng/ml

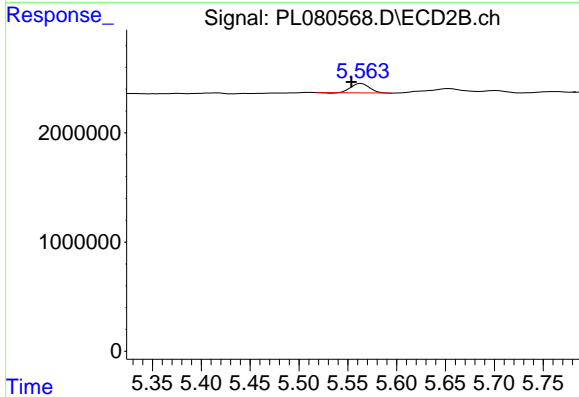


#12 4,4'-DDE

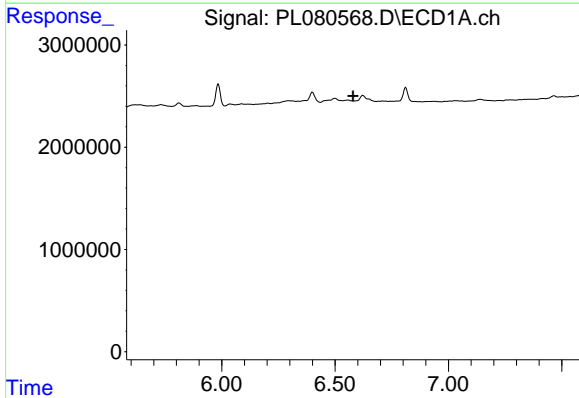
R.T.: 5.147 min
 Delta R.T.: -0.005 min
 Response: 2743413
 Conc: 1.16 ng/ml



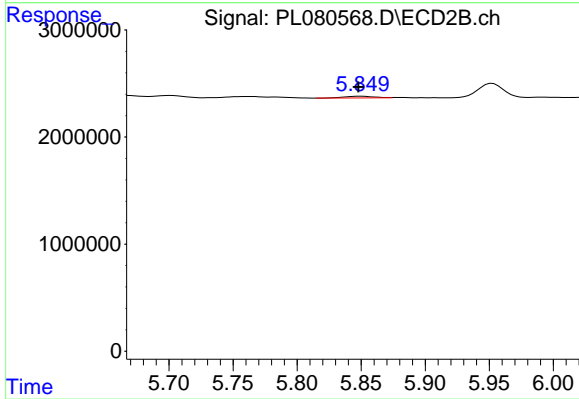
#14 Endrin
 R.T.: 6.368 min
 Delta R.T.: 0.006 min
 Response: 460411
 Conc: 0.21 ng/ml



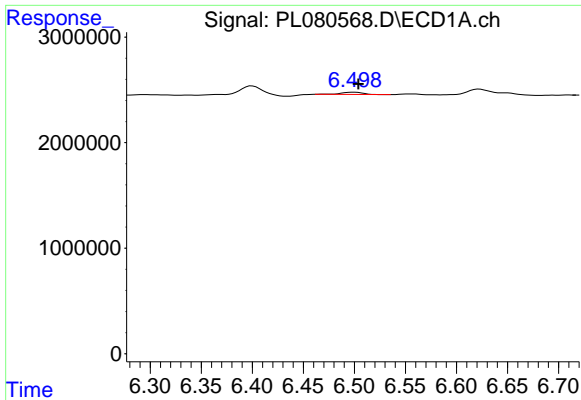
#14 Endrin
 R.T.: 5.564 min
 Delta R.T.: 0.010 min
 Response: 1133312
 Conc: 0.49 ng/ml



#15 Endosulfan II
 R.T.: 0.000 min
 Exp R.T. : 6.580 min
 Response: 0
 Conc: N.D.

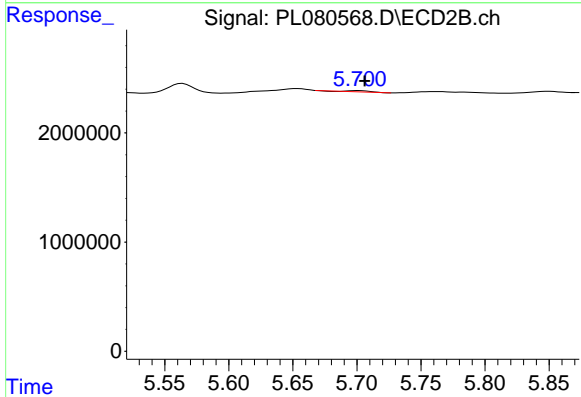


#15 Endosulfan II
 R.T.: 5.850 min
 Delta R.T.: 0.002 min
 Response: 268121
 Conc: 0.13 ng/ml



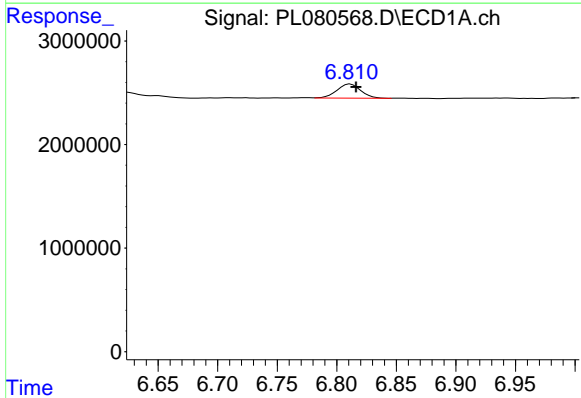
#16 4,4'-DDD

R.T.: 6.500 min
Delta R.T.: -0.004 min
Response: 327140
Conc: 0.18 ng/ml



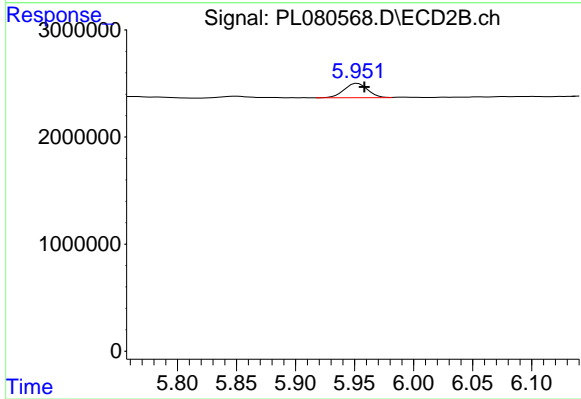
#16 4,4'-DDD

R.T.: 5.701 min
Delta R.T.: -0.005 min
Response: 132315
Conc: 0.07 ng/ml



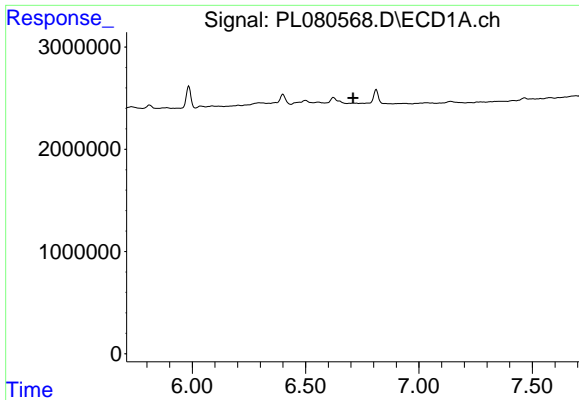
#17 4,4'-DDT

R.T.: 6.811 min
Delta R.T.: -0.005 min
Response: 1883632
Conc: 0.91 ng/ml

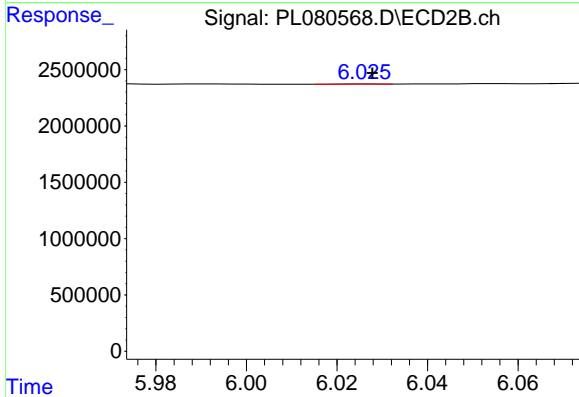


#17 4,4'-DDT

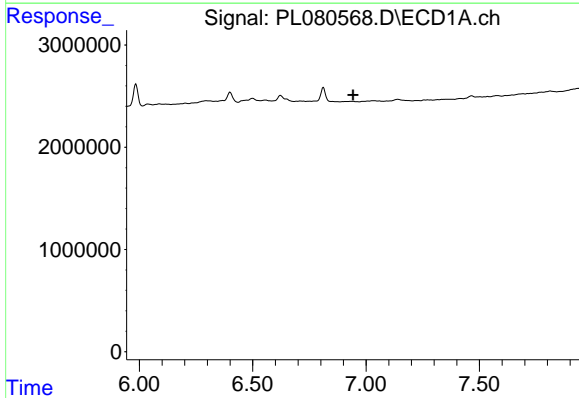
R.T.: 5.952 min
Delta R.T.: -0.006 min
Response: 1856906
Conc: 0.88 ng/ml



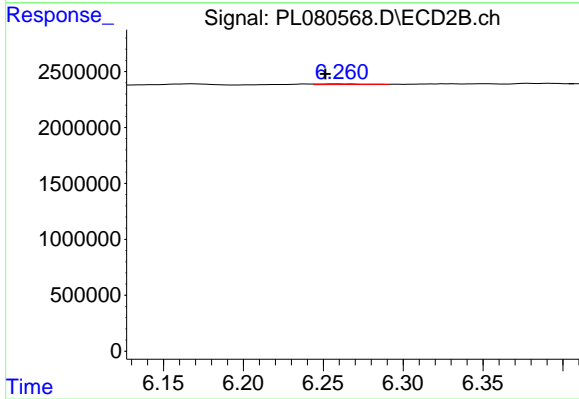
#18 Endrin aldehyde
 R.T.: 0.000 min
 Exp R.T. : 6.709 min
 Response: 0
 Conc: N.D.



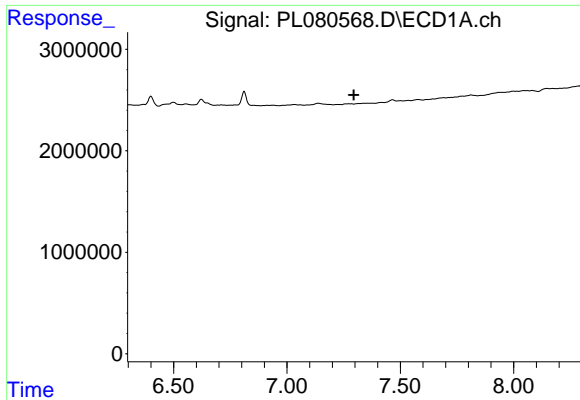
#18 Endrin aldehyde
 R.T.: 6.027 min
 Delta R.T.: -0.001 min
 Response: 8393
 Conc: 0.00 ng/ml



#19 Endosulfan Sulfate
 R.T.: 0.000 min
 Exp R.T. : 6.943 min
 Response: 0
 Conc: N.D.

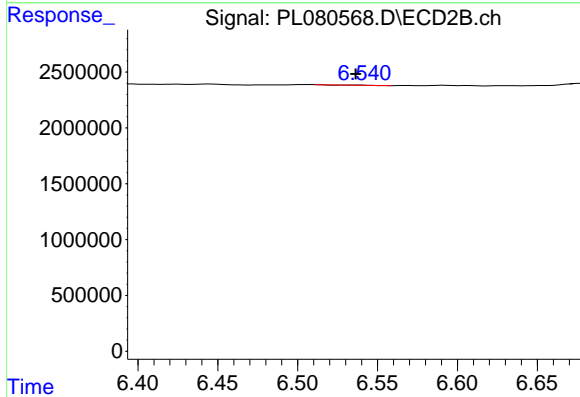


#19 Endosulfan Sulfate
 R.T.: 6.261 min
 Delta R.T.: 0.010 min
 Response: 123356
 Conc: 0.05 ng/ml



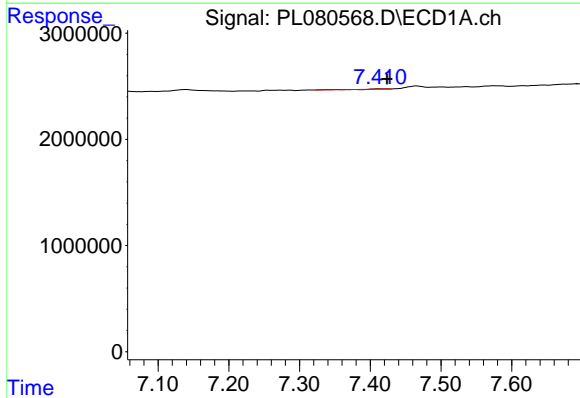
#20 Methoxychlor

R.T.: 0.000 min
 Exp R.T.: 7.294 min
 Response: 0
 Conc: N.D.



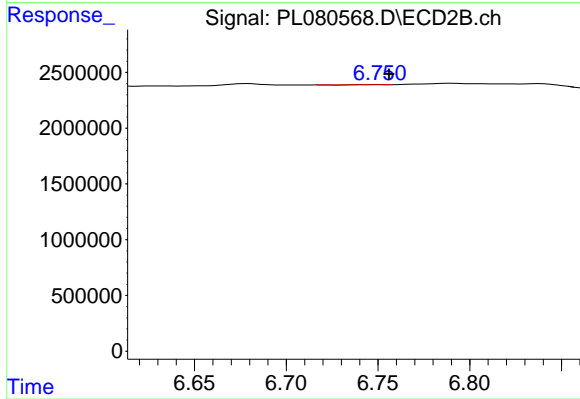
#20 Methoxychlor

R.T.: 6.540 min
 Delta R.T.: 0.004 min
 Response: 21461
 Conc: 0.02 ng/ml



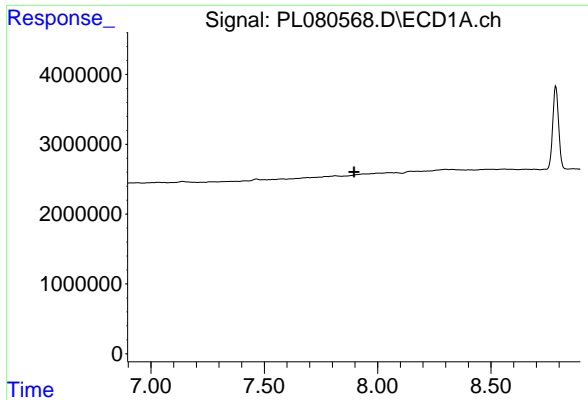
#21 Endrin ketone

R.T.: 7.413 min
 Delta R.T.: -0.010 min
 Response: 33881
 Conc: 0.02 ng/ml

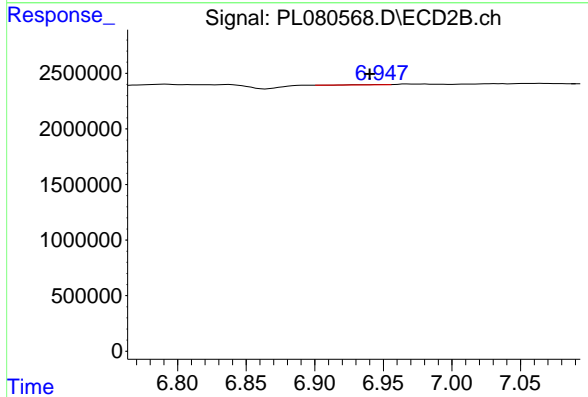


#21 Endrin ketone

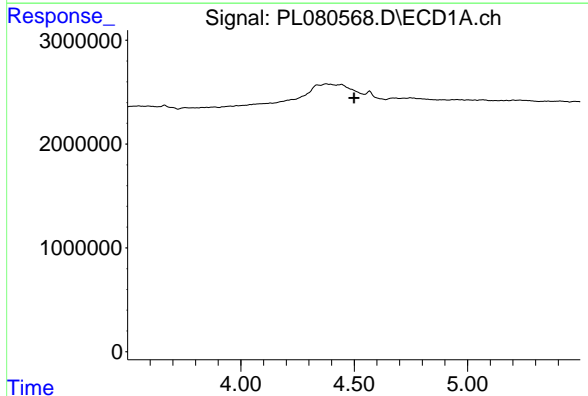
R.T.: 6.751 min
 Delta R.T.: -0.005 min
 Response: 4782
 Conc: 0.00 ng/ml



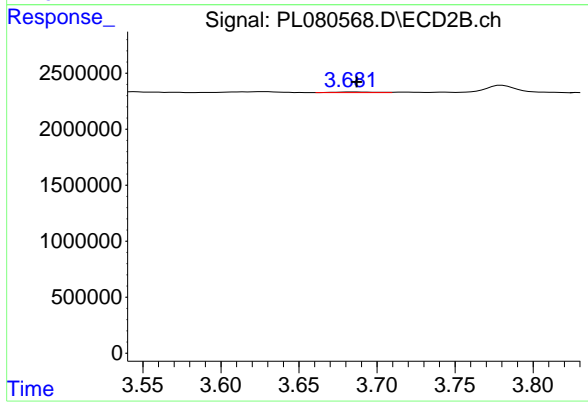
#22 Mirex
 R.T.: 0.000 min
 Exp R.T. : 7.896 min
 Response: 0
 Conc: N.D.



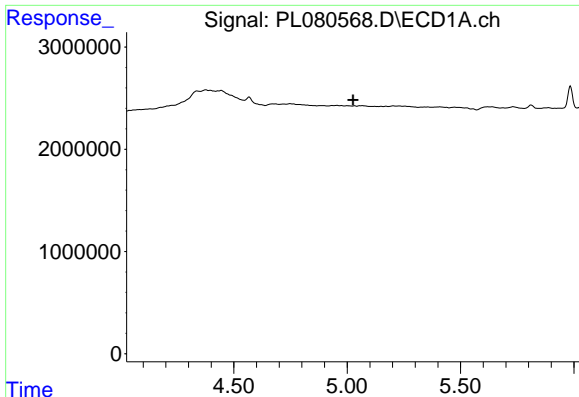
#22 Mirex
 R.T.: 6.949 min
 Delta R.T.: 0.009 min
 Response: 40365
 Conc: 0.02 ng/ml



#23 Chlordane-1
 R.T.: 0.000 min
 Exp R.T. : 4.500 min
 Response: 0
 Conc: N.D.

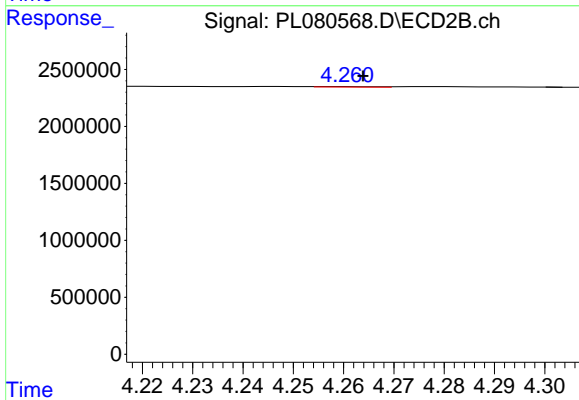


#23 Chlordane-1
 R.T.: 3.683 min
 Delta R.T.: -0.004 min
 Response: 109898
 Conc: 1.35 ng/ml



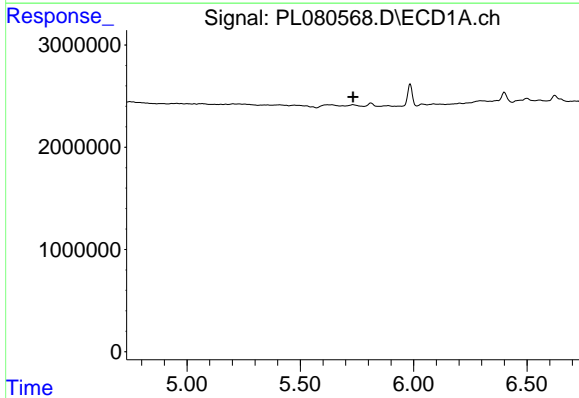
#24 Chlordane-2

R.T.: 0.000 min
 Exp R.T. : 5.027 min
 Response: 0
 Conc: N.D.



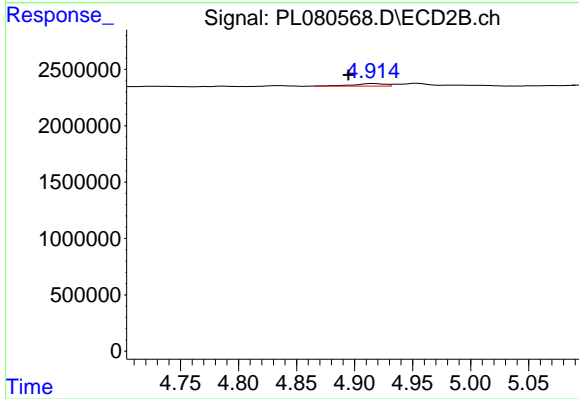
#24 Chlordane-2

R.T.: 4.261 min
 Delta R.T.: -0.003 min
 Response: 36911
 Conc: 0.41 ng/ml



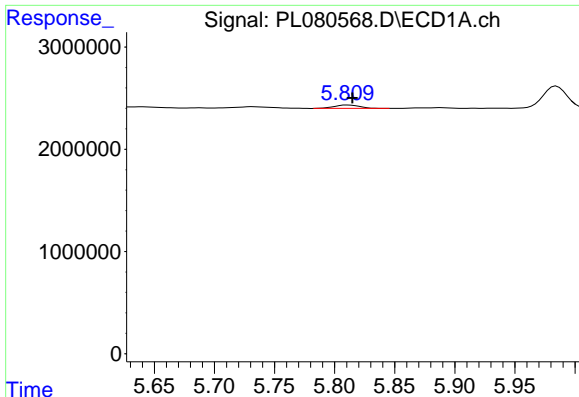
#25 Chlordane-3

R.T.: 0.000 min
 Exp R.T. : 5.732 min
 Response: 0
 Conc: N.D.



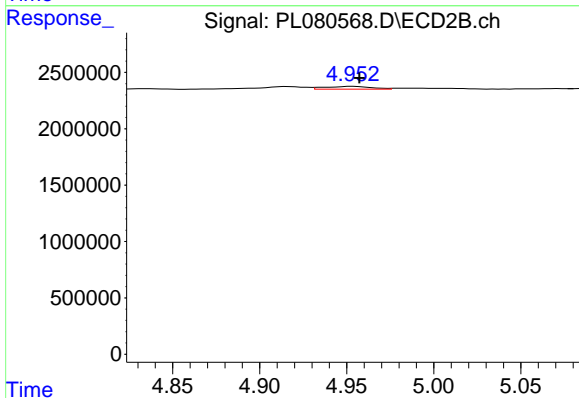
#25 Chlordane-3

R.T.: 4.915 min
 Delta R.T.: 0.021 min
 Response: 412348
 Conc: 1.56 ng/ml



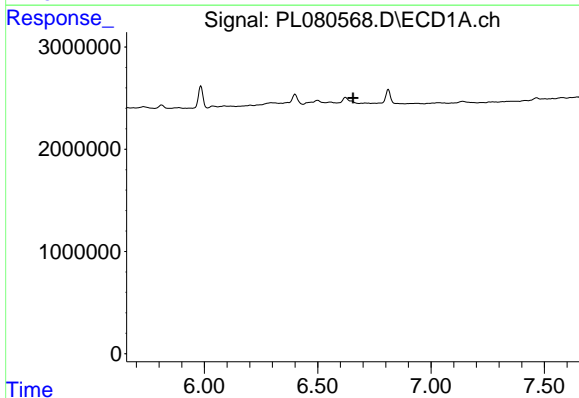
#26 Chlordane-4

R.T.: 5.811 min
 Delta R.T.: -0.004 min
 Response: 480629
 Conc: 1.11 ng/ml



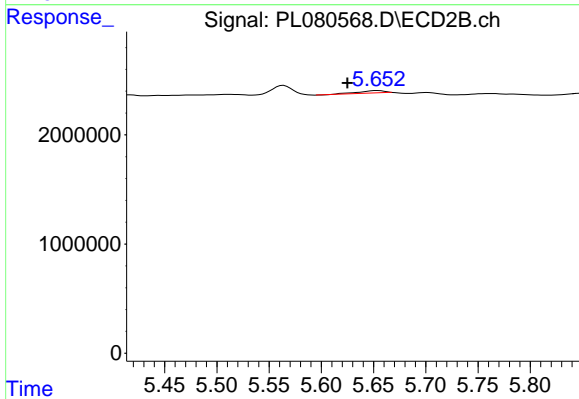
#26 Chlordane-4

R.T.: 4.953 min
 Delta R.T.: -0.004 min
 Response: 443798
 Conc: 1.65 ng/ml



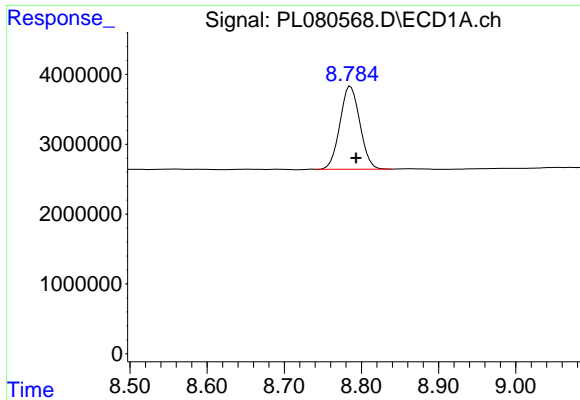
#27 Chlordane-5

R.T.: 0.000 min
 Exp R.T. : 6.656 min
 Response: 0
 Conc: N.D.



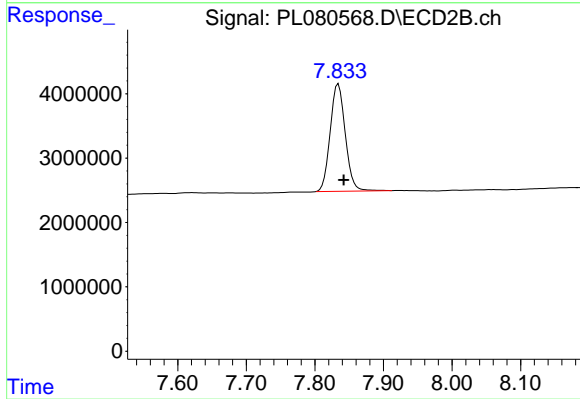
#27 Chlordane-5

R.T.: 5.654 min
 Delta R.T.: 0.029 min
 Response: 373730
 Conc: 5.25 ng/ml



#28 Decachlorobiphenyl

R.T.: 8.786 min
Delta R.T.: -0.007 min
Response: 21266000
Conc: 12.15 ng/ml



#28 Decachlorobiphenyl

R.T.: 7.834 min
Delta R.T.: -0.008 min
Response: 25565697
Conc: 10.73 ng/ml