

Data Path : Z:\pestpcbsrv\HPCHEM1\ECD\_L\Data\PL012819\  
 Data File : PL044289.D  
 Signal(s) : Signal #1: ECD1A.ch Signal #2: ECD2B.ch  
 Acq On : 28 Jan 2019 20:48  
 Operator : AJ\SJ  
 Sample : PSTDCCC050  
 Misc :  
 ALS Vial : 4 Sample Multiplier: 1

Instrument :  
 ECD\_L  
 ClientSampleId :  
 PSTDCCC050

Integration File signal 1: autoint1.e  
 Integration File signal 2: autoint2.e  
 Quant Time: Jan 29 00:04:38 2019  
 Quant Method : Z:\pestpcbsrv\HPCHEM1\ECD\_L\methods\PL012219.M  
 Quant Title : GC Extractables  
 QLast Update : Mon Jan 28 01:20:09 2019  
 Response via : Initial Calibration  
 Integrator: ChemStation

Volume Inj. : 2 µl  
 Signal #1 Phase : ZB-MR1 Signal #2 Phase: ZB-MR2  
 Signal #1 Info : 30M x 0.32mm x0.5 Signal #2 Info : 30M x 0.32mm x0.25µm

Compound	RT#1	RT#2	Resp#1	Resp#2	ng/ml	ng/ml
-----						
System Monitoring Compounds						
1) SA Tetrachlo...	3.367	3.987	301.0E6	108.0E6	49.673	49.524
28) SA Decachlor...	8.053	9.047	307.1E6	91791396	44.277	41.378
Target Compounds						
2) A alpha-BHC	3.798	4.377	461.6E6	145.4E6	51.728	52.374
3) MA gamma-BHC...	4.075	4.661	423.2E6	135.4E6	52.633	51.199
4) MA Heptachlor	4.363	5.170	418.6E6	132.0E6	53.096	50.855
5) MB Aldrin	4.604	5.474	408.2E6	127.7E6	52.274	50.772
6) B beta-BHC	4.327	4.833	176.6E6	59060174	50.939	50.052
7) B delta-BHC	4.524	5.049	350.3E6	89765320	53.896	47.223
8) B Heptachlo...	5.042	5.860	391.8E6	116.4E6	51.890	50.332
9) A Endosulfan I	5.375	6.217	365.3E6	113.2E6	51.860	48.916
10) B gamma-Chl...	5.265	6.095	401.5E6	125.8E6	51.832	49.848
11) B alpha-Chl...	5.322	6.167	395.9E6	123.6E6	51.953	49.123
12) B 4,4'-DDE	5.489	6.325	363.5E6	110.4E6	53.666	51.444
13) MA Dieldrin	5.615	6.474	396.8E6	118.0E6	52.797	49.236
14) MA Endrin	5.868	6.691	344.2E6	94487804	51.329	46.886
15) B Endosulfa...	6.142	6.901	351.6E6	100.7E6	52.109	47.703
16) A 4,4'-DDD	6.000	6.815	316.0E6	90417781	56.879	52.725
17) MA 4,4'-DDT	6.236	7.113	284.5E6	84228395	55.813	51.326
18) B Endrin al...	6.309	7.024	292.8E6	89028336	51.778	46.673
19) B Endosulfa...	6.520	7.247	301.4E6	91927240	52.849	47.808
20) A Methoxychlor	6.782	7.571	152.2E6	47823359	51.318	46.758
21) B Endrin ke...	7.004	7.717	368.9E6	102.8E6	52.983	48.173

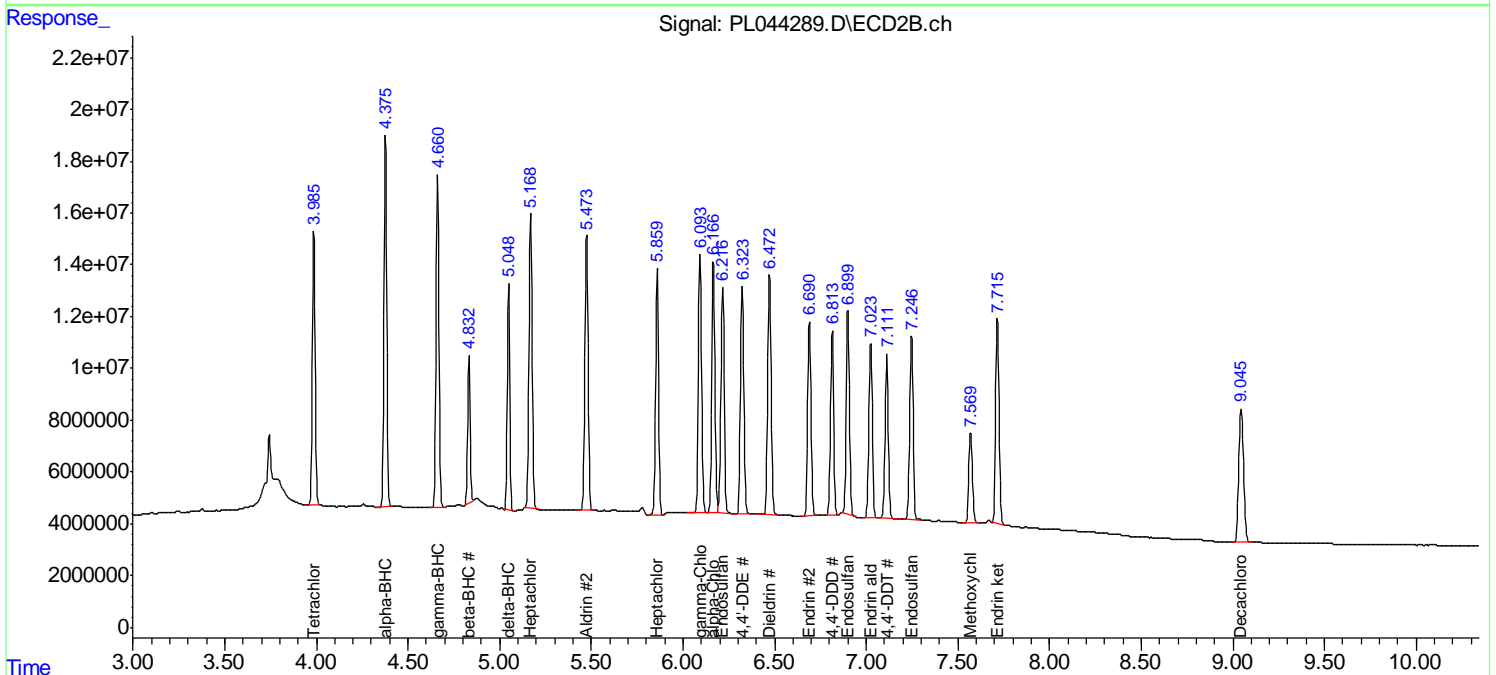
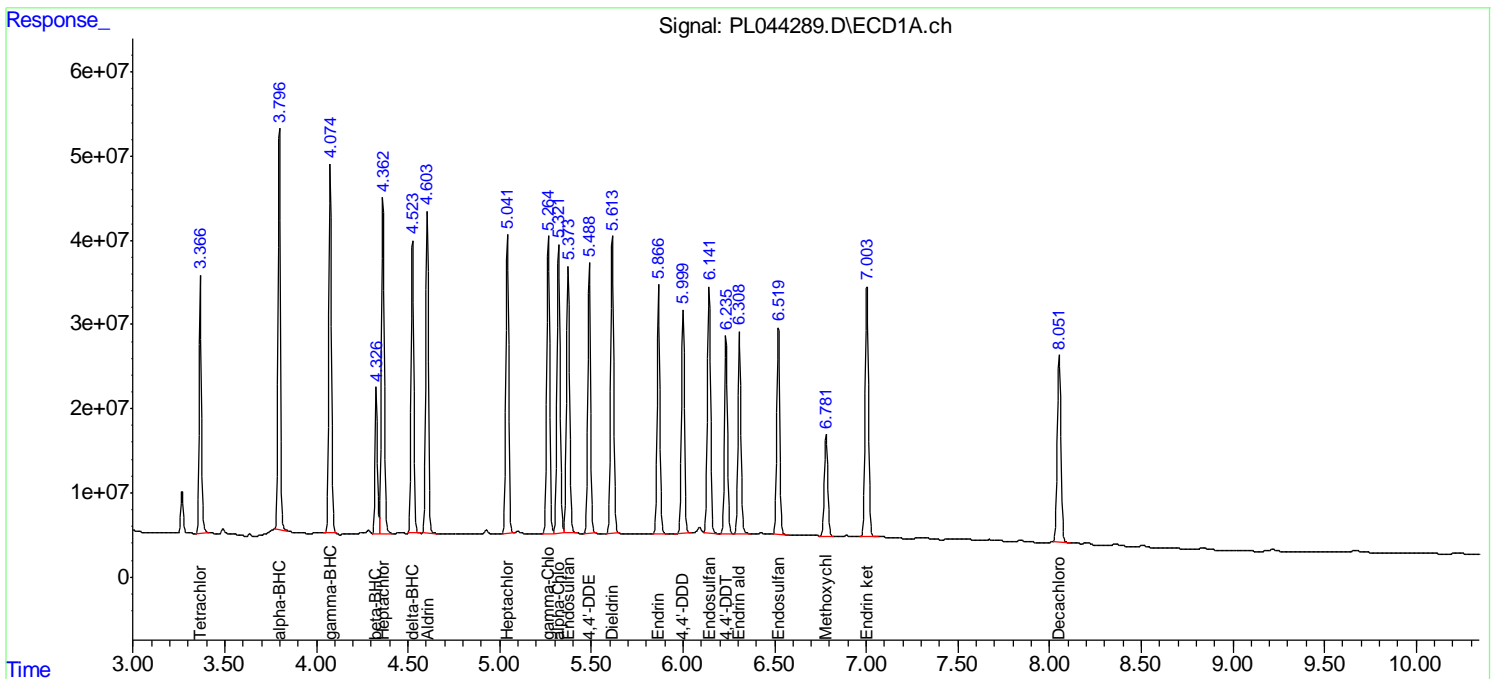
(f)=RT Delta > 1/2 Window (#)=Amounts differ by > 25% (m)=manual int.

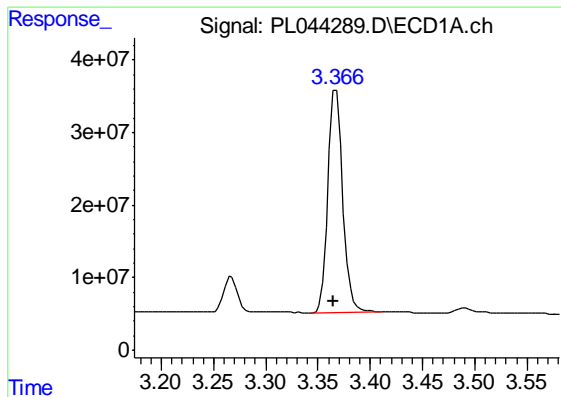
Data Path : Z:\pestpcbsrv\HPCHEM1\ECD\_L\Data\PL012819\  
 Data File : PL044289.D  
 Signal(s) : Signal #1: ECD1A.ch Signal #2: ECD2B.ch  
 Acq On : 28 Jan 2019 20:48  
 Operator : AJ\SJ  
 Sample : PSTDCCC050  
 Misc :  
 ALS Vial : 4 Sample Multiplier: 1

Instrument :  
 ECD\_L  
 Client Sampled :  
 PSTDCCC050

Integration File signal 1: autoint1.e  
 Integration File signal 2: autoint2.e  
 Quant Time: Jan 29 00:04:38 2019  
 Quant Method : Z:\pestpcbsrv\HPCHEM1\ECD\_L\methods\PL012219.M  
 Quant Title : GC Extractables  
 QLast Update : Mon Jan 28 01:20:09 2019  
 Response via : Initial Calibration  
 Integrator: ChemStation

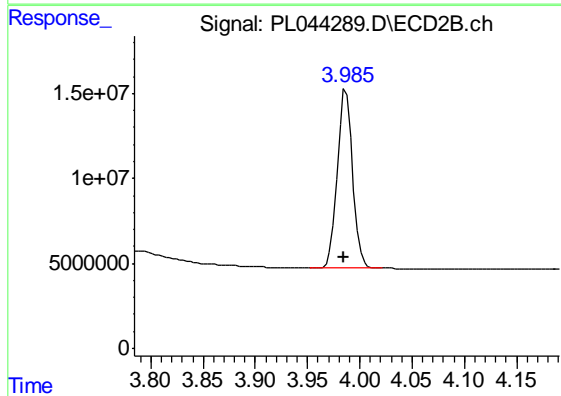
Volume Inj. : 2 µl  
 Signal #1 Phase : ZB-MR1 Signal #2 Phase: ZB-MR2  
 Signal #1 Info : 30M x 0.32mm x0.5 Signal #2 Info : 30M x 0.32mm x0.25µm



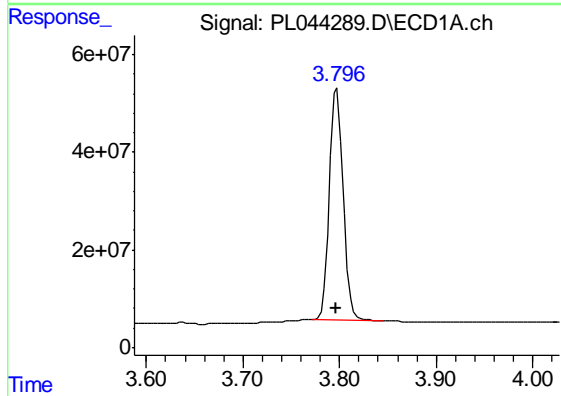


#1 Tetrachloro-m-xylene  
 R.T.: 3.367 min  
 Delta R.T.: 0.002 min  
 Response: 301036361  
 Conc: 49.67 ng/ml

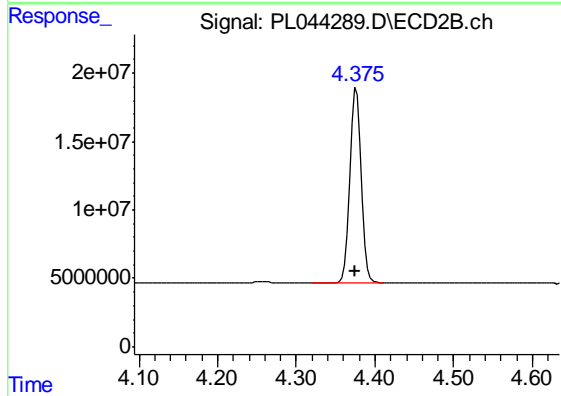
Instrument :  
 ECD\_L  
 ClientSampleId :  
 PSTDCCC050



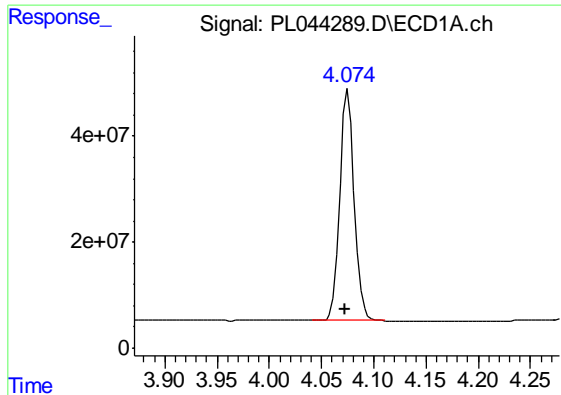
#1 Tetrachloro-m-xylene  
 R.T.: 3.987 min  
 Delta R.T.: 0.002 min  
 Response: 108026268  
 Conc: 49.52 ng/ml



#2 alpha-BHC  
 R.T.: 3.798 min  
 Delta R.T.: 0.002 min  
 Response: 461593602  
 Conc: 51.73 ng/ml



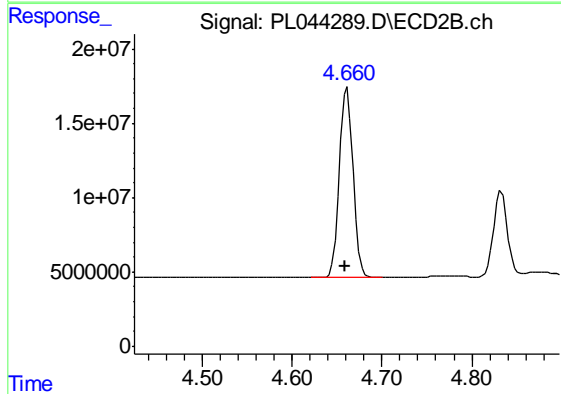
#2 alpha-BHC  
 R.T.: 4.377 min  
 Delta R.T.: 0.002 min  
 Response: 145365033  
 Conc: 52.37 ng/ml



#3 gamma-BHC (Lindane)

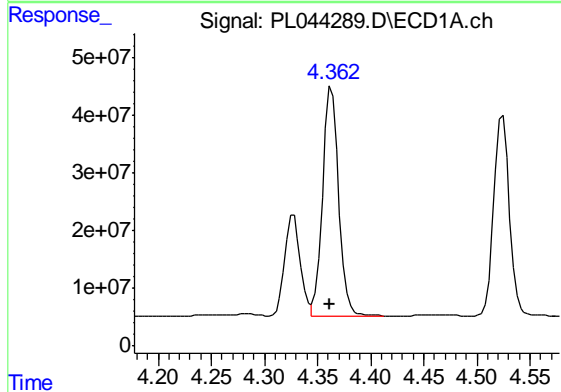
R.T.: 4.075 min  
Delta R.T.: 0.002 min  
Response: 423194399  
Conc: 52.63 ng/ml

Instrument :  
ECD\_L  
ClientSampleId :  
PSTDCCC050



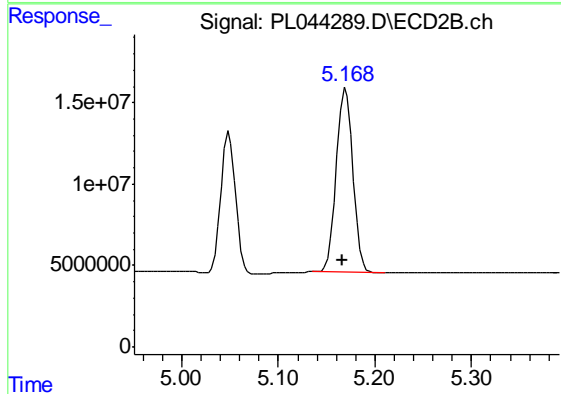
#3 gamma-BHC (Lindane)

R.T.: 4.661 min  
Delta R.T.: 0.002 min  
Response: 135361458  
Conc: 51.20 ng/ml



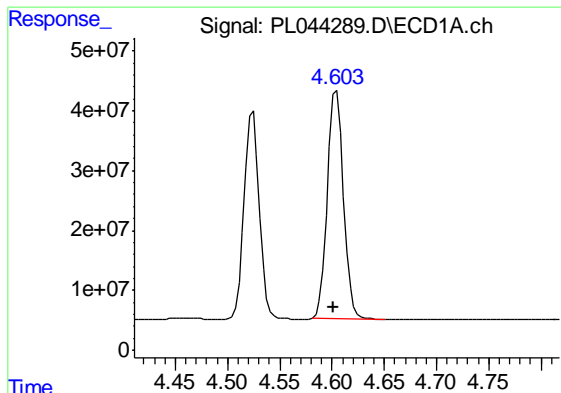
#4 Heptachlor

R.T.: 4.363 min  
Delta R.T.: 0.002 min  
Response: 418598656  
Conc: 53.10 ng/ml



#4 Heptachlor

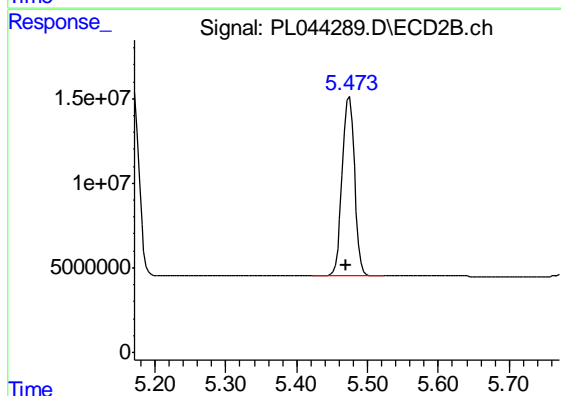
R.T.: 5.170 min  
Delta R.T.: 0.003 min  
Response: 131967887  
Conc: 50.86 ng/ml



#5 Aldrin

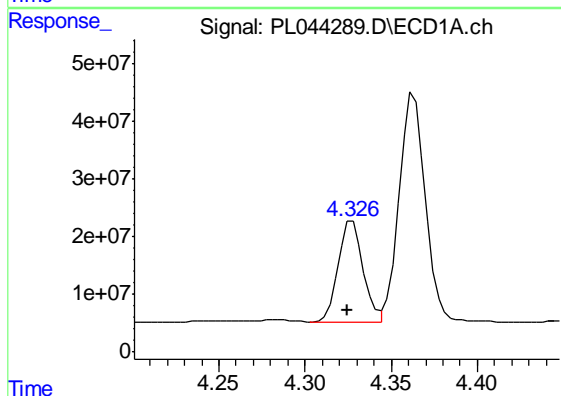
R.T.: 4.604 min  
 Delta R.T.: 0.003 min  
 Response: 408150433  
 Conc: 52.27 ng/ml

Instrument :  
 ECD\_L  
 ClientSampleId :  
 PSTDCCC050



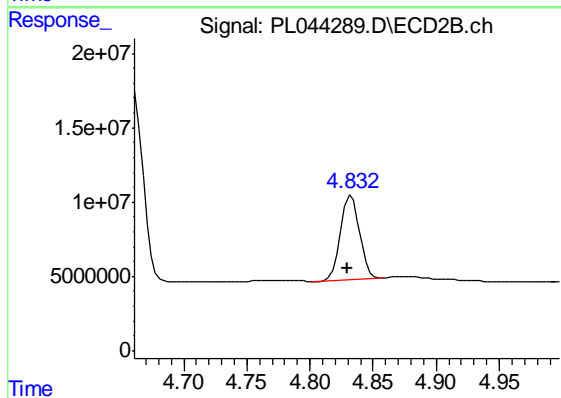
#5 Aldrin

R.T.: 5.474 min  
 Delta R.T.: 0.004 min  
 Response: 127742370  
 Conc: 50.77 ng/ml



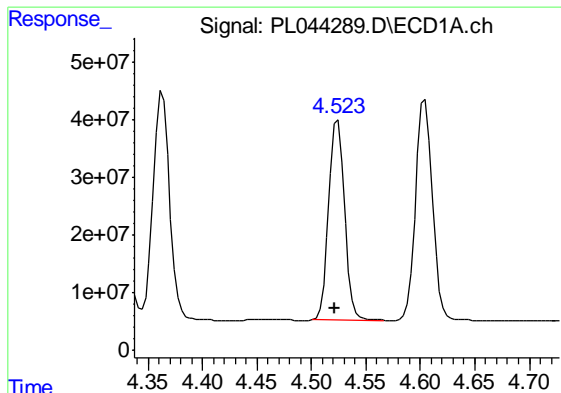
#6 beta-BHC

R.T.: 4.327 min  
 Delta R.T.: 0.002 min  
 Response: 176600679  
 Conc: 50.94 ng/ml



#6 beta-BHC

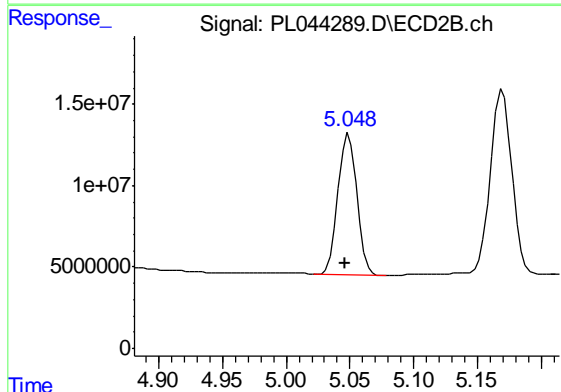
R.T.: 4.833 min  
 Delta R.T.: 0.003 min  
 Response: 59060174  
 Conc: 50.05 ng/ml



#7 delta-BHC

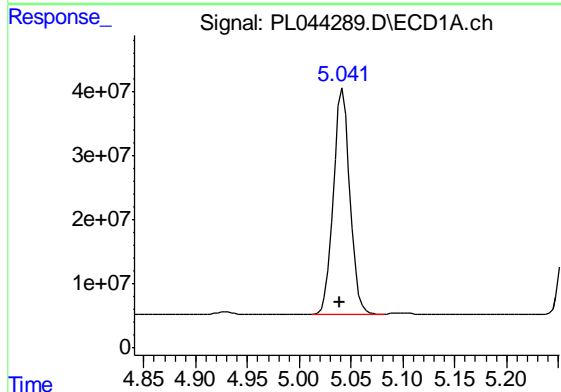
R.T.: 4.524 min  
 Delta R.T.: 0.003 min  
 Response: 350311675  
 Conc: 53.90 ng/ml

Instrument :  
 ECD\_L  
 ClientSampleId :  
 PSTDCCC050



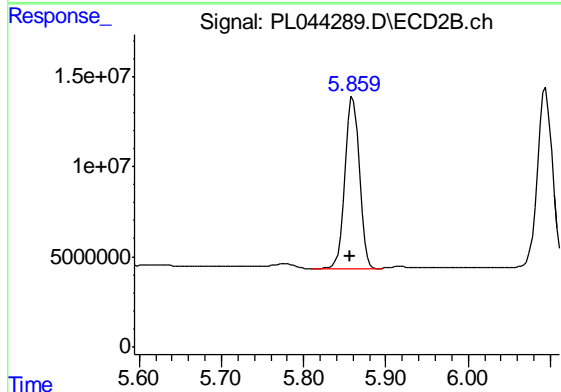
#7 delta-BHC

R.T.: 5.049 min  
 Delta R.T.: 0.003 min  
 Response: 89765320  
 Conc: 47.22 ng/ml



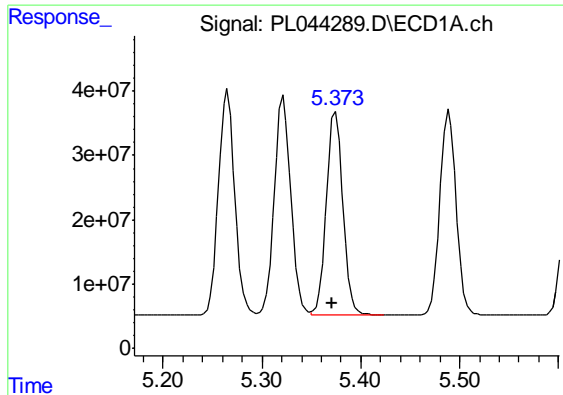
#8 Heptachlor epoxide

R.T.: 5.042 min  
 Delta R.T.: 0.003 min  
 Response: 391784192  
 Conc: 51.89 ng/ml



#8 Heptachlor epoxide

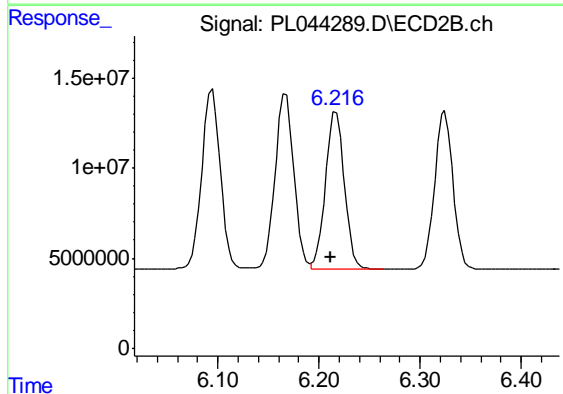
R.T.: 5.860 min  
 Delta R.T.: 0.004 min  
 Response: 116409744  
 Conc: 50.33 ng/ml



#9 Endosulfan I

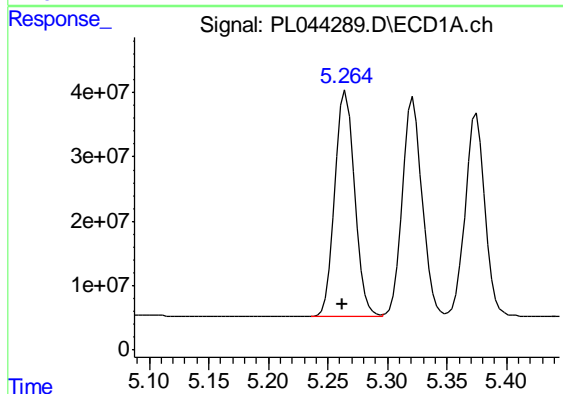
R.T.: 5.375 min  
 Delta R.T.: 0.004 min  
 Response: 365334854  
 Conc: 51.86 ng/ml

Instrument :  
 ECD\_L  
 ClientSampleId :  
 PSTDCCC050



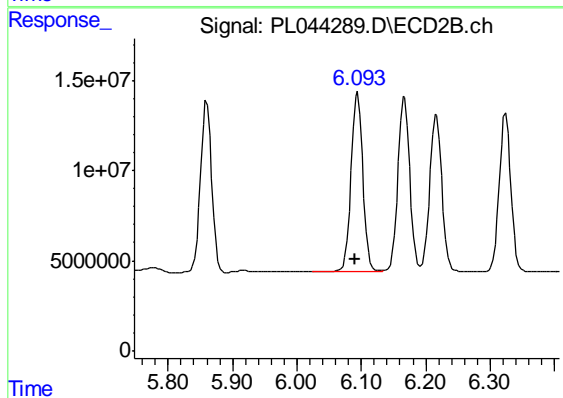
#9 Endosulfan I

R.T.: 6.217 min  
 Delta R.T.: 0.005 min  
 Response: 113247443  
 Conc: 48.92 ng/ml



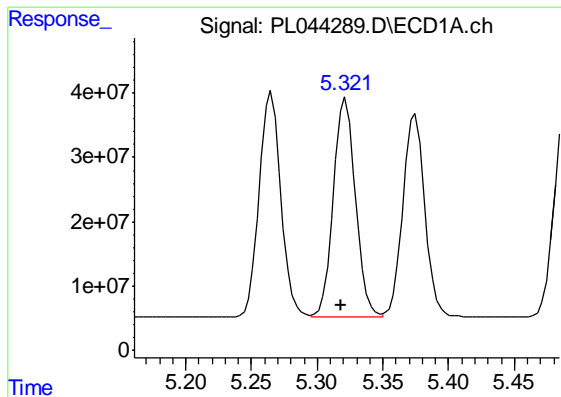
#10 gamma-Chlordane

R.T.: 5.265 min  
 Delta R.T.: 0.003 min  
 Response: 401463959  
 Conc: 51.83 ng/ml



#10 gamma-Chlordane

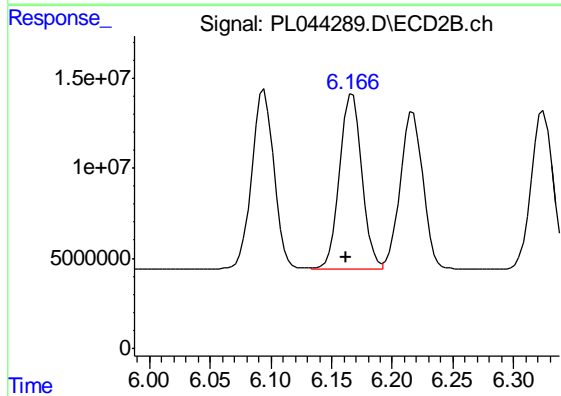
R.T.: 6.095 min  
 Delta R.T.: 0.005 min  
 Response: 125784602  
 Conc: 49.85 ng/ml



#11 alpha-Chlordane

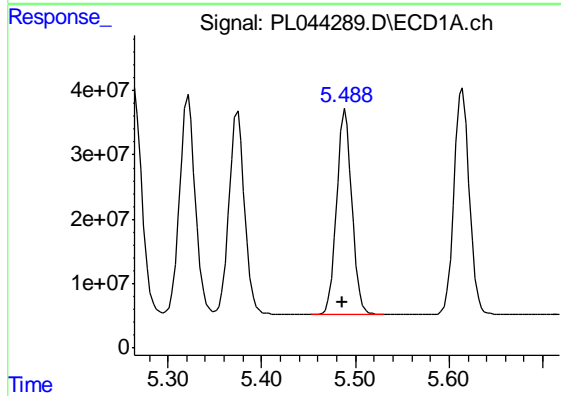
R.T.: 5.322 min  
 Delta R.T.: 0.003 min  
 Response: 395894654  
 Conc: 51.95 ng/ml

Instrument :  
 ECD\_L  
 ClientSampleId :  
 PSTDCCC050



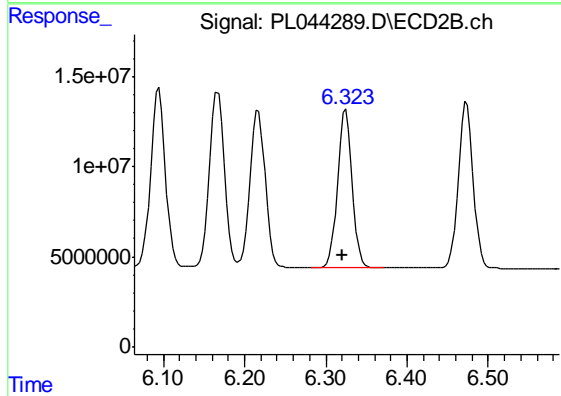
#11 alpha-Chlordane

R.T.: 6.167 min  
 Delta R.T.: 0.005 min  
 Response: 123590227  
 Conc: 49.12 ng/ml



#12 4,4'-DDE

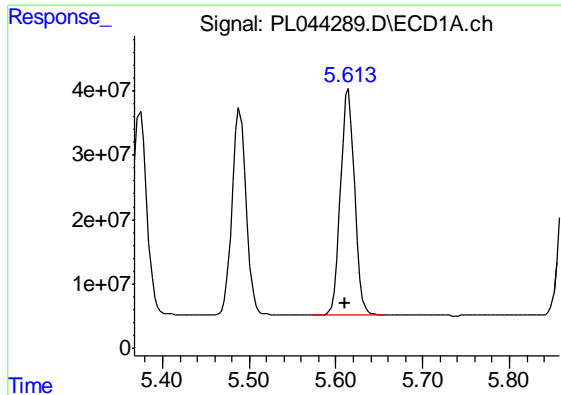
R.T.: 5.489 min  
 Delta R.T.: 0.004 min  
 Response: 363505231  
 Conc: 53.67 ng/ml



#12 4,4'-DDE

R.T.: 6.325 min  
 Delta R.T.: 0.005 min  
 Response: 110404983  
 Conc: 51.44 ng/ml

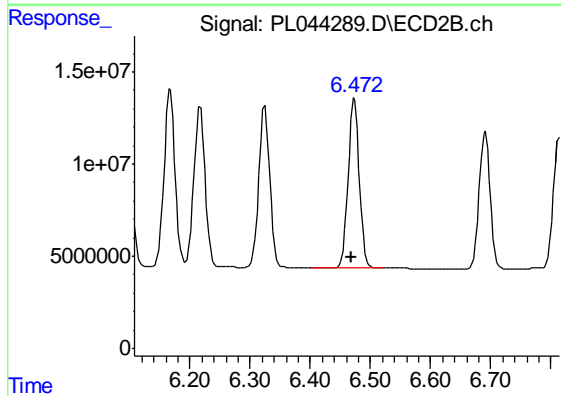




#13 Dieldrin

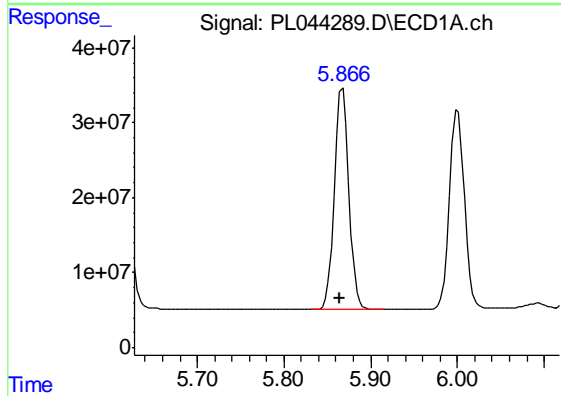
R.T.: 5.615 min  
 Delta R.T.: 0.004 min  
 Response: 396771481  
 Conc: 52.80 ng/ml

Instrument :  
 ECD\_L  
 ClientSampleId :  
 PSTDCCC050



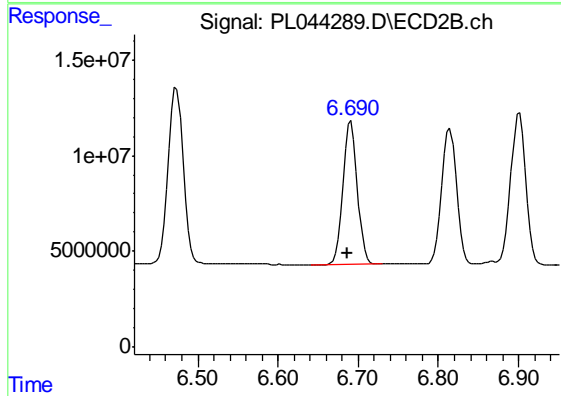
#13 Dieldrin

R.T.: 6.474 min  
 Delta R.T.: 0.004 min  
 Response: 117965666  
 Conc: 49.24 ng/ml



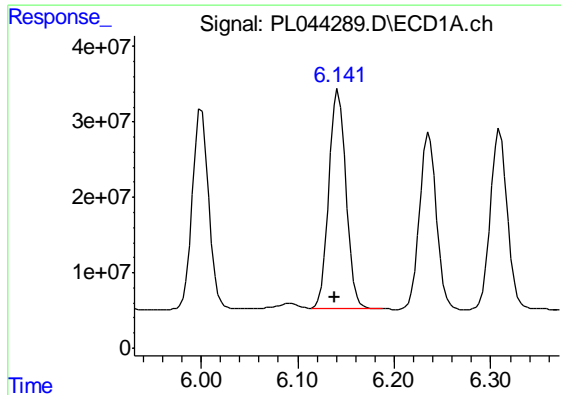
#14 Endrin

R.T.: 5.868 min  
 Delta R.T.: 0.004 min  
 Response: 344197585  
 Conc: 51.33 ng/ml



#14 Endrin

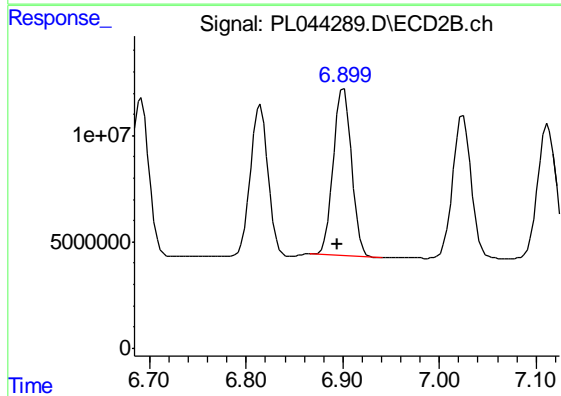
R.T.: 6.691 min  
 Delta R.T.: 0.005 min  
 Response: 94487804  
 Conc: 46.89 ng/ml



#15 Endosulfan II

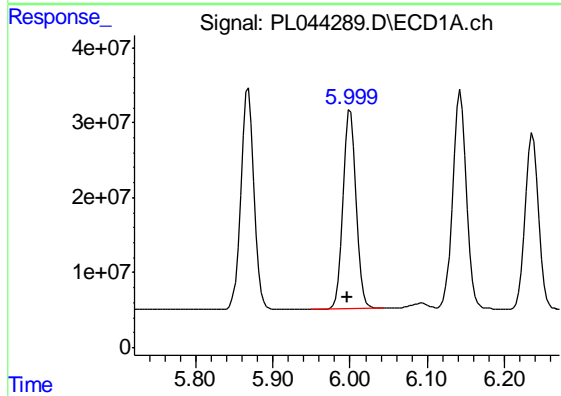
R.T.: 6.142 min  
 Delta R.T.: 0.004 min  
 Response: 35155395  
 Conc: 52.11 ng/ml

Instrument :  
 ECD\_L  
 ClientSampleId :  
 PSTDCCC050



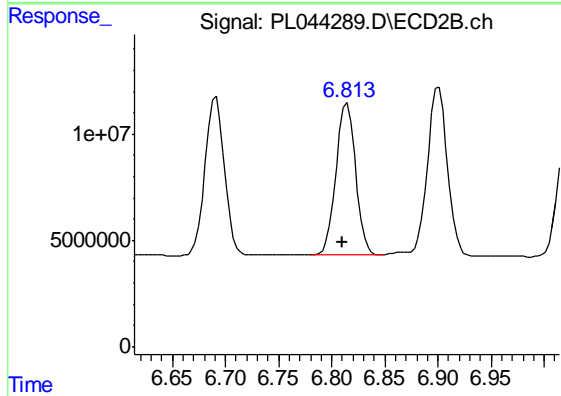
#15 Endosulfan II

R.T.: 6.901 min  
 Delta R.T.: 0.006 min  
 Response: 100731424  
 Conc: 47.70 ng/ml



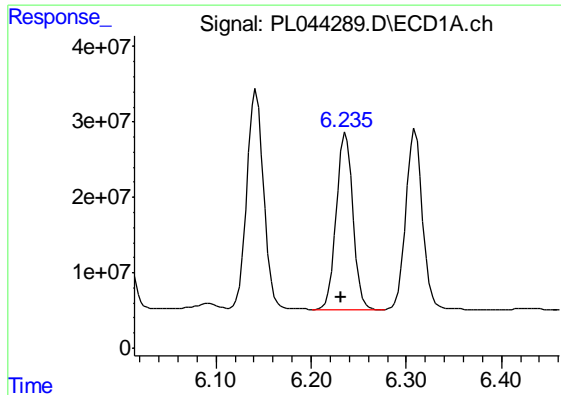
#16 4,4'-DDD

R.T.: 6.000 min  
 Delta R.T.: 0.003 min  
 Response: 316025205  
 Conc: 56.88 ng/ml



#16 4,4'-DDD

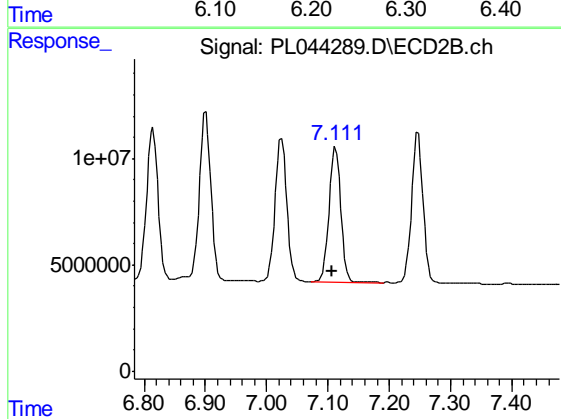
R.T.: 6.815 min  
 Delta R.T.: 0.005 min  
 Response: 90417781  
 Conc: 52.72 ng/ml



#17 4,4'-DDT

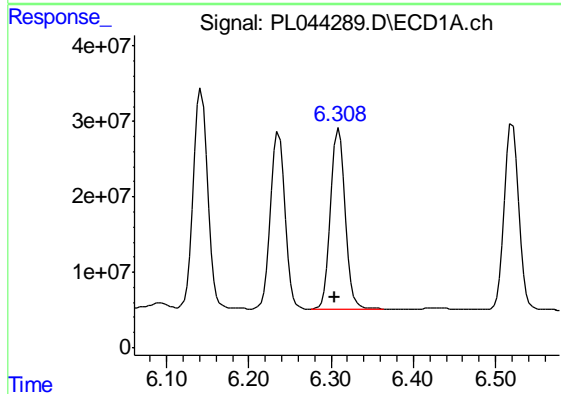
R.T.: 6.236 min  
Delta R.T.: 0.004 min  
Response: 284536489  
Conc: 55.81 ng/ml

Instrument :  
ECD\_L  
ClientSampleId :  
PSTDCCC050



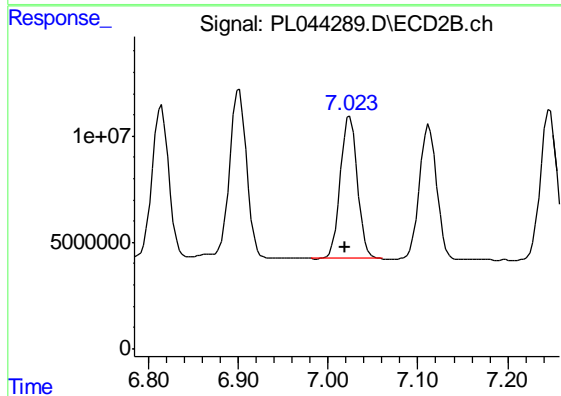
#17 4,4'-DDT

R.T.: 7.113 min  
Delta R.T.: 0.005 min  
Response: 84228395  
Conc: 51.33 ng/ml



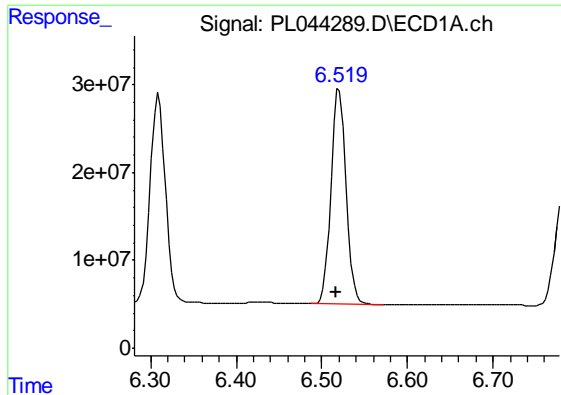
#18 Endrin aldehyde

R.T.: 6.309 min  
Delta R.T.: 0.004 min  
Response: 292795728  
Conc: 51.78 ng/ml



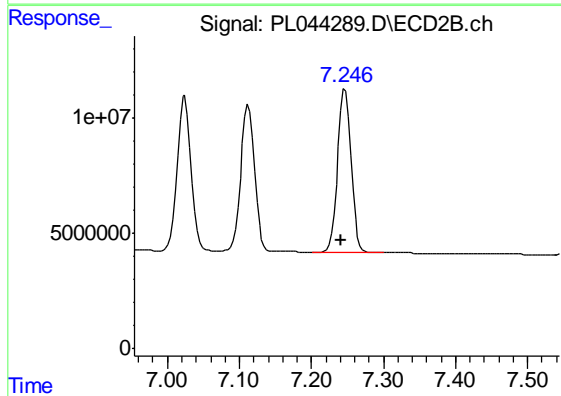
#18 Endrin aldehyde

R.T.: 7.024 min  
Delta R.T.: 0.005 min  
Response: 89028336  
Conc: 46.67 ng/ml

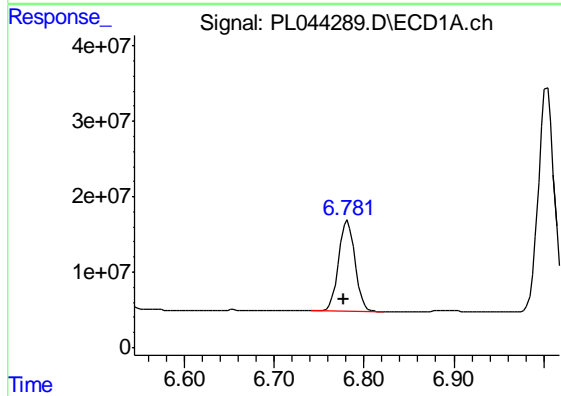


#19 Endosulfan Sulfate  
 R.T.: 6.520 min  
 Delta R.T.: 0.004 min  
 Response: 301394306  
 Conc: 52.85 ng/ml

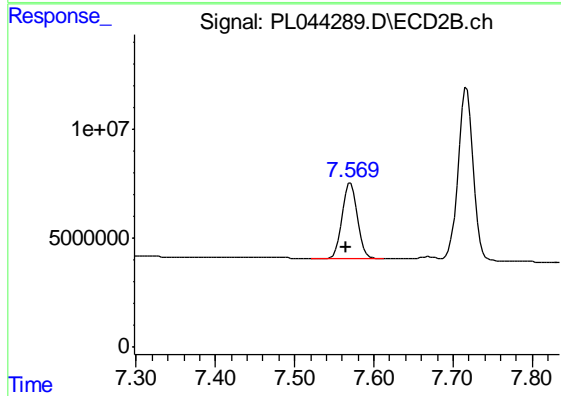
Instrument :  
 ECD\_L  
 ClientSampleId :  
 PSTDCCC050



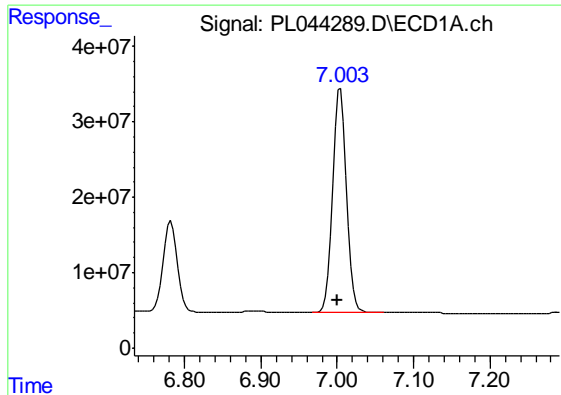
#19 Endosulfan Sulfate  
 R.T.: 7.247 min  
 Delta R.T.: 0.006 min  
 Response: 91927240  
 Conc: 47.81 ng/ml



#20 Methoxychlor  
 R.T.: 6.782 min  
 Delta R.T.: 0.005 min  
 Response: 152177889  
 Conc: 51.32 ng/ml



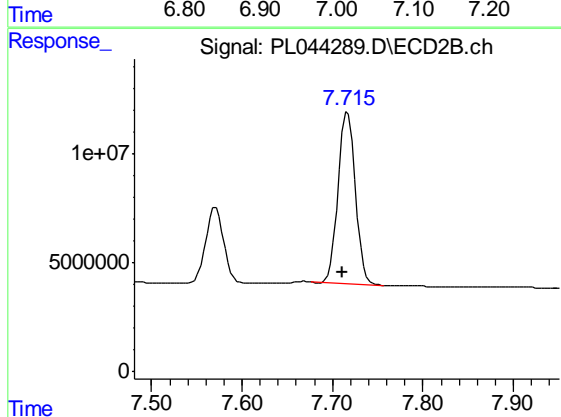
#20 Methoxychlor  
 R.T.: 7.571 min  
 Delta R.T.: 0.006 min  
 Response: 47823359  
 Conc: 46.76 ng/ml



#21 Endrin ketone

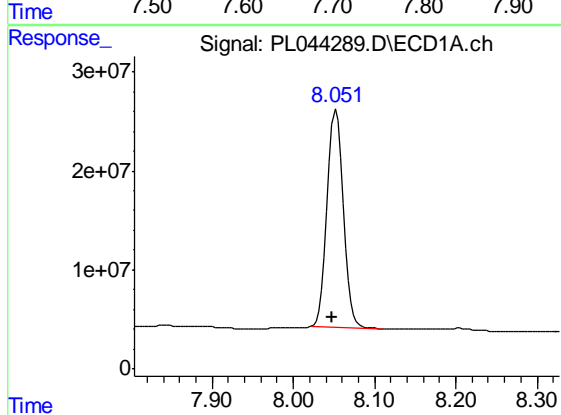
R.T.: 7.004 min  
Delta R.T.: 0.004 min  
Response: 368853780  
Conc: 52.98 ng/ml

Instrument :  
ECD\_L  
ClientSampleId :  
PSTDCCC050



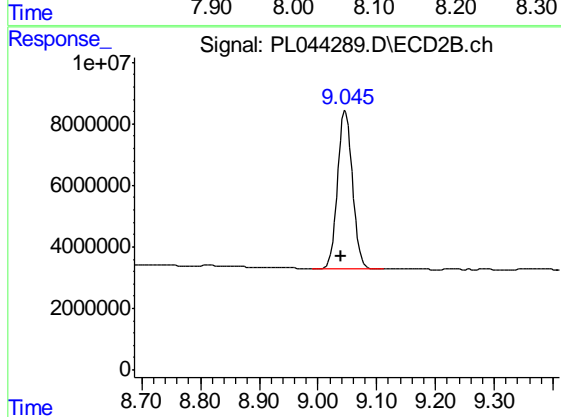
#21 Endrin ketone

R.T.: 7.717 min  
Delta R.T.: 0.006 min  
Response: 102785555  
Conc: 48.17 ng/ml



#28 Decachlorobiphenyl

R.T.: 8.053 min  
Delta R.T.: 0.005 min  
Response: 307060011  
Conc: 44.28 ng/ml



#28 Decachlorobiphenyl

R.T.: 9.047 min  
Delta R.T.: 0.007 min  
Response: 91791396  
Conc: 41.38 ng/ml