

Data Path : Z:\pestpcbsrv\HPCHEM1\ECD_L\Data\PL012821\
 Data File : PL064480.D
 Signal(s) : Signal #1: ECD1A.ch Signal #2: ECD2B.ch
 Acq On : 28 Jan 2021 15:58
 Operator : AR\AJ
 Sample : I.BLK
 Misc :
 ALS Vial : 2 Sample Multiplier: 1

Instrument :
 ECD_L
 ClientSampleId :

Integration File signal 1: autoint1.e
 Integration File signal 2: autoint2.e
 Quant Time: Jan 28 17:15:03 2021
 Quant Method : Z:\pestpcbsrv\HPCHEM1\ECD_L\methods\PL011221.M
 Quant Title : GC Extractables
 QLast Update : Mon Jan 18 13:25:12 2021
 Response via : Initial Calibration
 Integrator: ChemStation

Volume Inj. : 1 µl
 Signal #1 Phase : ZB-MR2 Signal #2 Phase: ZB-MR1
 Signal #1 Info : 30M x 0.32mm x0.2 Signal #2 Info : 30M x 0.32mm x0.5µm

Compound	RT#1	RT#2	Resp#1	Resp#2	ng/ml	ng/ml
System Monitoring Compounds						
1) SA Tetrachlo...	3.437	4.108	55272260	44493866	18.433	17.405
28) SA Decachlor...	8.168	9.271	68686558	46103770	22.505	19.425
Target Compounds						
14) MA Endrin	5.973	0.000	1691485	0	0.487	N.D. #

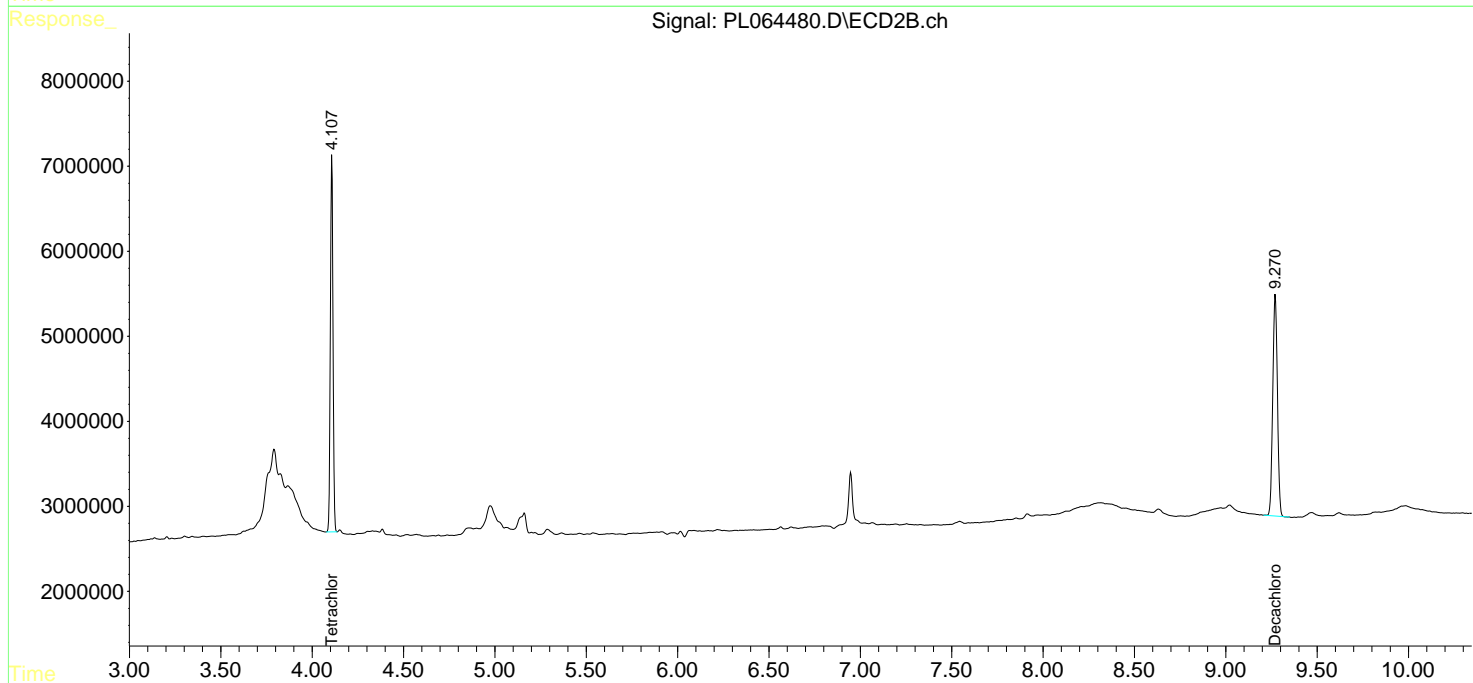
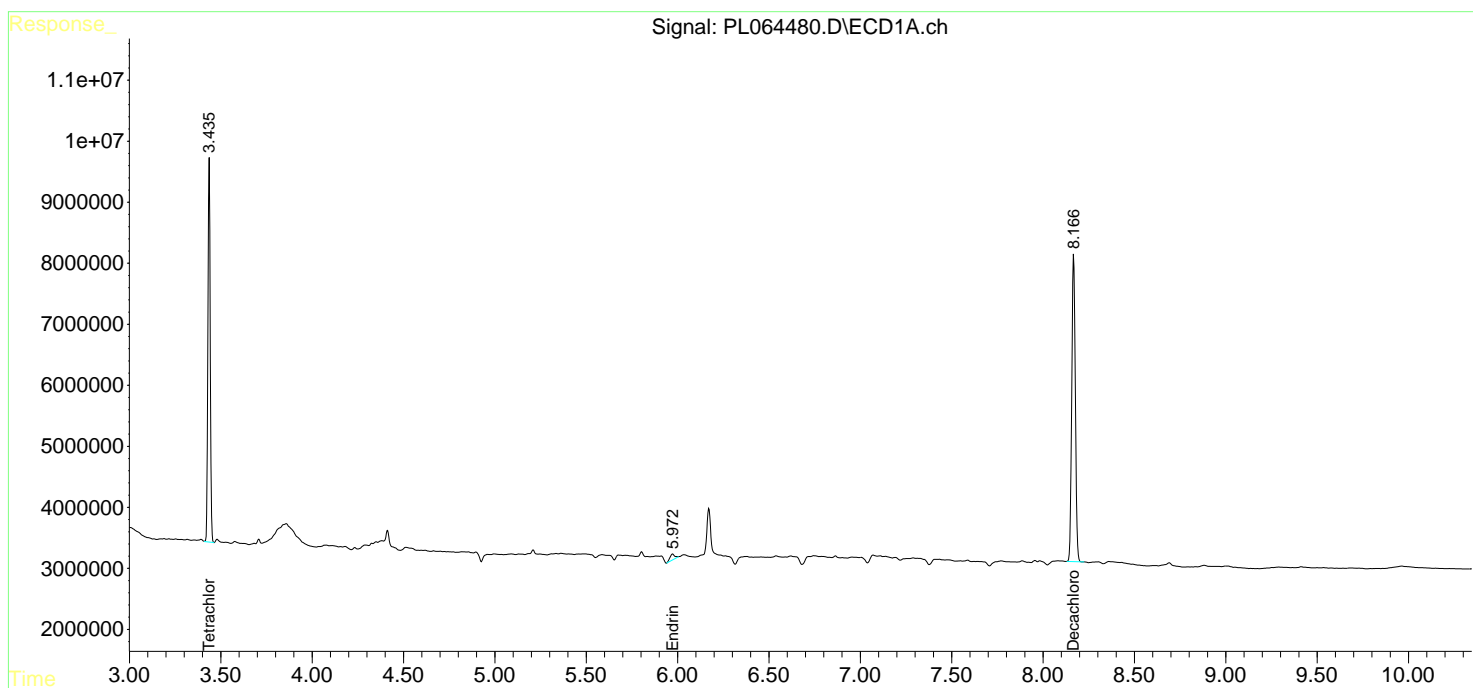
(f)=RT Delta > 1/2 Window (#)=Amounts differ by > 25% (m)=manual int.

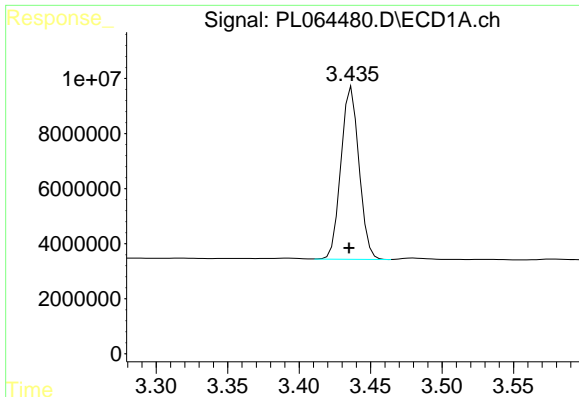
Data Path : Z:\pestpcbsrv\HPCHEM1\ECD_L\Data\PL012821\
 Data File : PL064480.D
 Signal(s) : Signal #1: ECD1A.ch Signal #2: ECD2B.ch
 Acq On : 28 Jan 2021 15:58
 Operator : AR\AJ
 Sample : I.BLK
 Misc :
 ALS Vial : 2 Sample Multiplier: 1

Instrument :
 ECD_L
 ClientSampleId :

Integration File signal 1: autoint1.e
 Integration File signal 2: autoint2.e
 Quant Time: Jan 28 17:15:03 2021
 Quant Method : Z:\pestpcbsrv\HPCHEM1\ECD_L\methods\PL011221.M
 Quant Title : GC Extractables
 QLast Update : Mon Jan 18 13:25:12 2021
 Response via : Initial Calibration
 Integrator: ChemStation

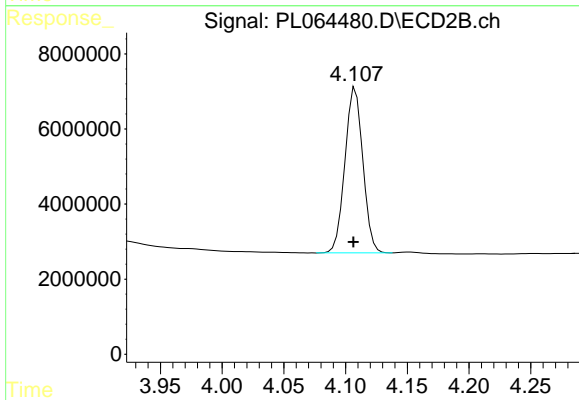
Volume Inj. : 1 µl
 Signal #1 Phase : ZB-MR2 Signal #2 Phase: ZB-MR1
 Signal #1 Info : 30M x 0.32mm x0.2 Signal #2 Info : 30M x 0.32mm x0.5µm



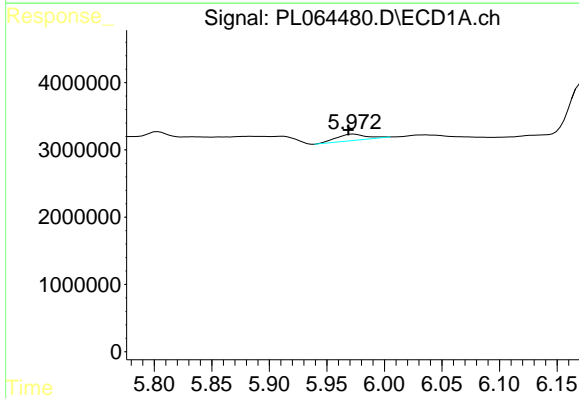


#1 Tetrachloro-m-xylene
 R.T.: 3.437 min
 Delta R.T.: 0.002 min
 Response: 55272260
 Conc: 18.43 ng/ml

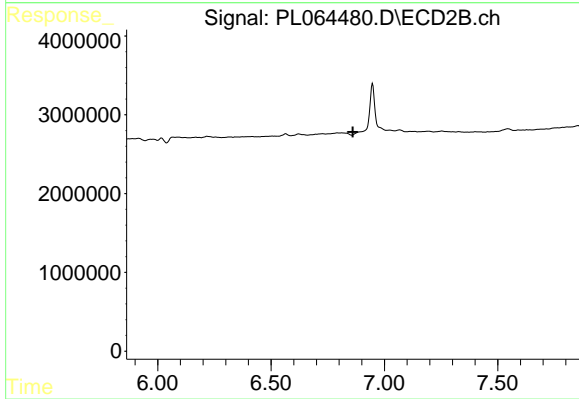
Instrument :
 ECD_L
 ClientSampled :



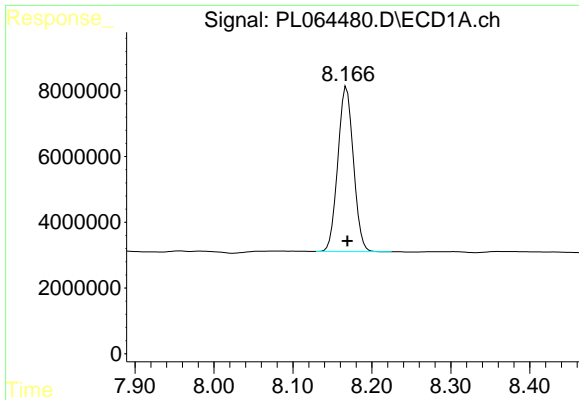
#1 Tetrachloro-m-xylene
 R.T.: 4.108 min
 Delta R.T.: 0.002 min
 Response: 44493866
 Conc: 17.40 ng/ml



#14 Endrin
 R.T.: 5.973 min
 Delta R.T.: 0.004 min
 Response: 1691485
 Conc: 0.49 ng/ml



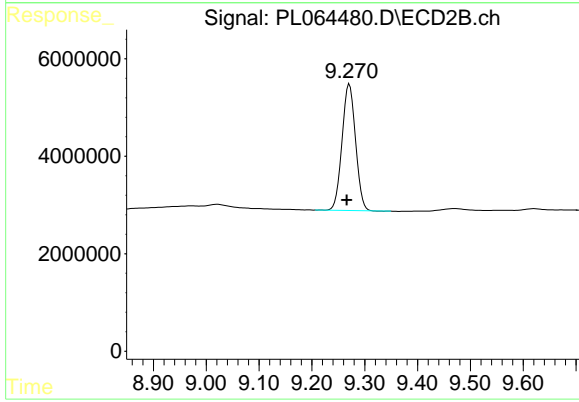
#14 Endrin
 R.T.: 0.000 min
 Exp R.T. : 6.861 min
 Response: 0
 Conc: N.D.



#28 Decachlorobiphenyl

R.T.: 8.168 min
Delta R.T.: 0.000 min
Response: 68686558
Conc: 22.50 ng/ml

Instrument :
ECD_L
ClientSampleId :



#28 Decachlorobiphenyl

R.T.: 9.271 min
Delta R.T.: 0.005 min
Response: 46103770
Conc: 19.43 ng/ml