

Data Path : P:\HPCHEM1\ECD_L\Data\PL012918\
 Data File : PL032628.D
 Signal(s) : Signal #1: ECD1A.CH Signal #2: ECD2B.CH
 Acq On : 29 Jan 2018 14:21
 Operator : UA\AJ
 Sample : J1288-04MS
 Misc :
 ALS Vial : 21 Sample Multiplier: 1

Instrument :
 ECD_L
 ClientSampleId :
 EPE-108-4(84-86)MS

Integration File signal 1: autoint1.e
 Integration File signal 2: autoint2.e
 Quant Time: Jan 29 22:43:46 2018
 Quant Method : P:\HPCHEM1\ECD_L\methods\PL012618.M
 Quant Title : GC Extractables
 QLast Update : Sat Jan 27 04:03:48 2018
 Response via : Initial Calibration
 Integrator: ChemStation 6890 Scale Mode: Large solvent peaks clipped

Volume Inj. : 2 µl
 Signal #1 Phase : ZB-MR1 Signal #2 Phase: ZB-MR2
 Signal #1 Info : 30M x 0.32mm x0.5 Signal #2 Info : 30M x 0.32mm x0.25µm

| Compound | RT#1 | RT#2 | Resp#1 | Resp#2 | ng/ml | ng/ml |
|-----------------------------|-------|-------|---------|----------|----------|------------|
| ----- | | | | | | |
| System Monitoring Compounds | | | | | | |
| 1) SA Tetrachlo... | 3.408 | 3.993 | 164.0E6 | 24253253 | 18.344 | 19.367 |
| 28) SA Decachlor... | 8.113 | 9.027 | 171.5E6 | 36013894 | 14.741 | 18.934 # |
| Target Compounds | | | | | | |
| 2) A alpha-BHC | 3.845 | 4.372 | 737.8E6 | 125.6E6 | 52.435 | 54.227 |
| 3) MA gamma-BHC... | 4.126 | 4.653 | 667.7E6 | 113.8E6 | 51.716 | 52.972 |
| 4) MA Heptachlor | 4.415 | 5.168 | 641.1E6 | 102.0E6 | 48.429 | 48.873 |
| 5) MB Aldrin | 4.658 | 5.471 | 607.2E6 | 101.8E6 | 47.242 | 48.615 |
| 6) B beta-BHC | 4.377 | 4.813 | 286.7E6 | 49853356 | 50.205 | 52.235 |
| 7) B delta-BHC | 4.576 | 5.029 | 683.3E6 | 108.2E6 | 51.190 | 48.644 |
| 8) B Heptachlo... | 5.098 | 5.851 | 584.9E6 | 87213259 | 49.421 | 48.780 |
| 9) A Endosulfan I | 5.432 | 6.204 | 547.3E6 | 88846737 | 47.950 | 49.238 |
| 10) B gamma-Chl... | 5.321 | 6.085 | 591.7E6 | 92227531 | 45.844 | 47.301 |
| 11) B alpha-Chl... | 5.379 | 6.159 | 575.9E6 | 91314241 | 46.290 | 48.178 |
| 12) B 4,4'-DDE | 5.545 | 6.314 | 562.6E6 | 88231326 | 44.276 | 46.265 |
| 13) MA Dieldrin | 5.673 | 6.458 | 609.8E6 | 93463907 | 47.636 | 48.907 |
| 14) MA Endrin | 5.929 | 6.673 | 552.8E6 | 84706450 | 47.339 | 50.229 |
| 15) B Endosulfa... | 6.202 | 6.874 | 522.1E6 | 81904794 | 44.497 | 46.518 |
| 16) A 4,4'-DDD | 6.059 | 6.795 | 471.9E6 | 69383959 | 44.850 | 48.649 |
| 17) MA 4,4'-DDT | 6.296 | 7.095 | 453.3E6 | 58776696 | 42.882 | 44.080 |
| 18) B Endrin al... | 6.371 | 6.997 | 431.5E6 | 70575802 | 43.690 | 47.661 |
| 19) B Endosulfa... | 6.581 | 7.220 | 487.6E6 | 75945766 | 44.018 | 47.090 |
| 20) A Methoxychlor | 6.844 | 7.551 | 246.2E6 | 34884805 | 42.379 | 42.798 |
| 21) B Endrin ke... | 7.069 | 7.683 | 576.9E6 | 78369188 | 46.059 | 43.395 |
| 23) Chlordane-1 | 0.000 | 5.029 | 0 | 108.2E6 | N.D. | 1398.674 # |
| 24) Chlordane-2 | 4.415 | 5.168 | 641.1E6 | 102.0E6 | 1044.037 | 869.495 |
| 25) Chlordane-3 | 5.321 | 6.085 | 591.7E6 | 92227531 | 396.401 | 334.658 |
| 26) Chlordane-4 | 5.379 | 6.159 | 575.9E6 | 91314241 | 447.757 | 279.497 # |
| 27) Chlordane-5 | 6.202 | 6.997 | 522.1E6 | 70575802 | 1055.911 | 1171.083 |
| ----- | | | | | | |

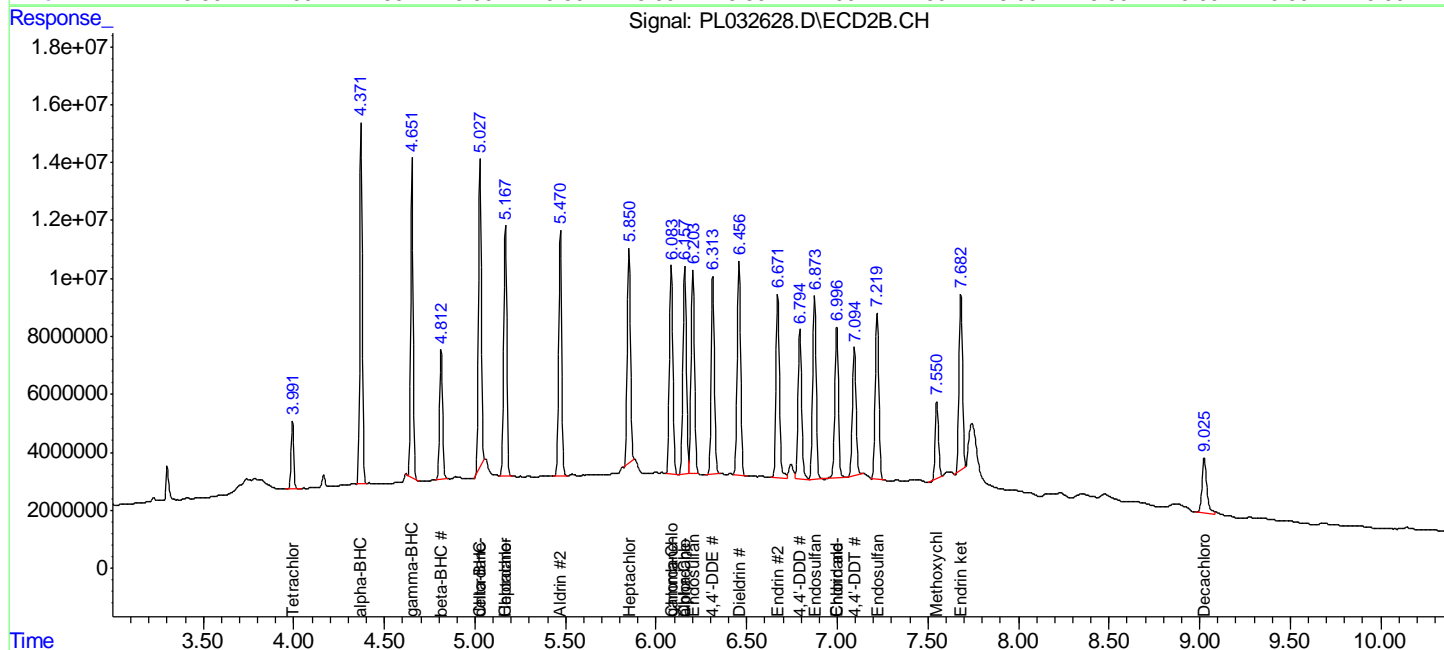
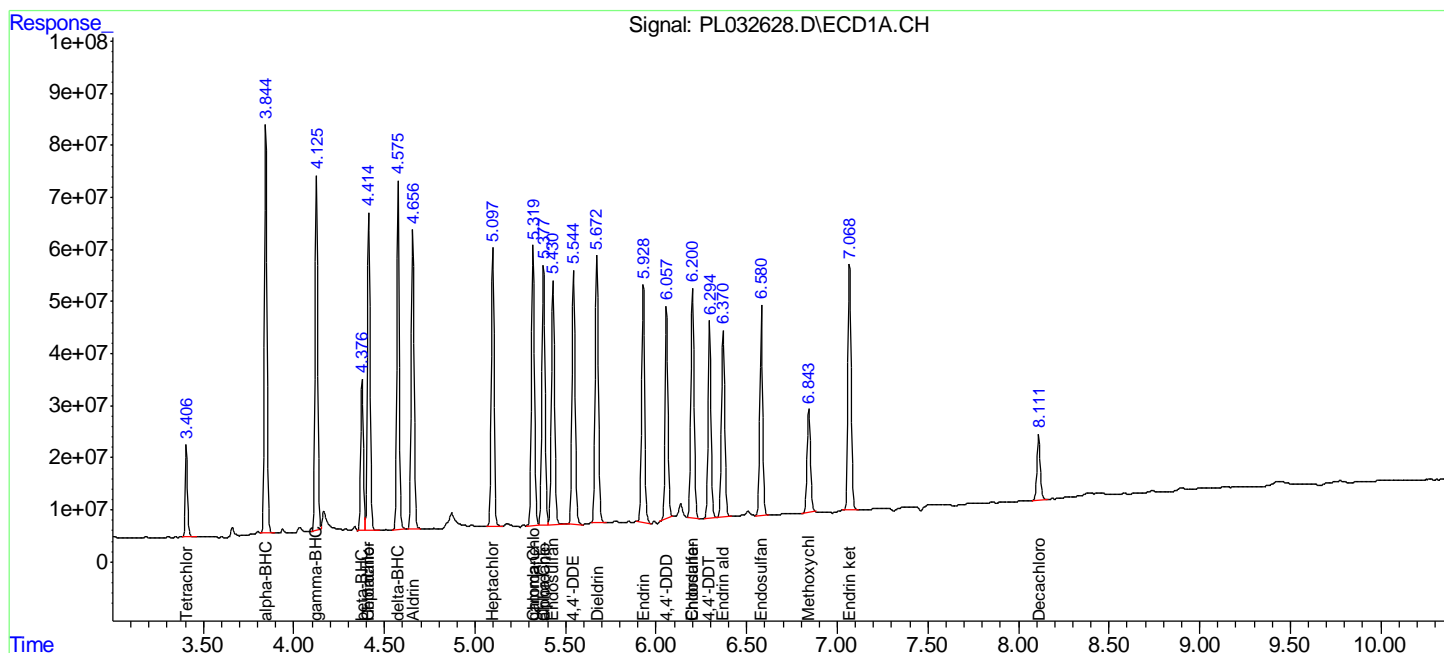
(f)=RT Delta > 1/2 Window (#)=Amounts differ by > 25% (m)=manual int.

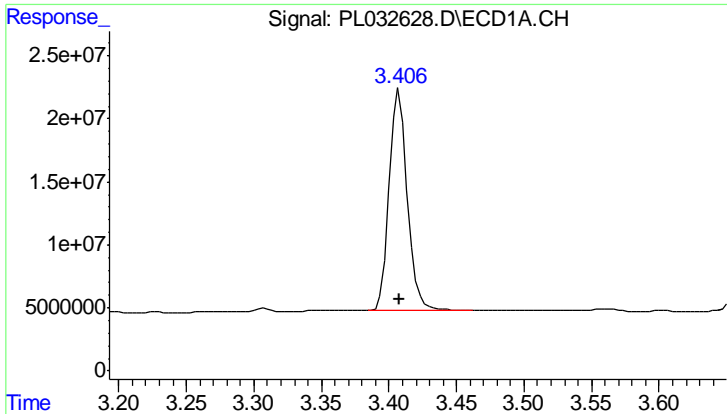
Data Path : P:\HPCHEM1\ECD_L\Data\PL012918\
 Data File : PL032628.D
 Signal(s) : Signal #1: ECD1A.CH Signal #2: ECD2B.CH
 Acq On : 29 Jan 2018 14:21
 Operator : UA\AJ
 Sample : J1288-04MS
 Misc :
 ALS Vial : 21 Sample Multiplier: 1

Instrument :
 ECD_L
 Client Sampled :
 EPE-108-4(84-86)MS

Integration File signal 1: autoint1.e
 Integration File signal 2: autoint2.e
 Quant Time: Jan 29 22:43:46 2018
 Quant Method : P:\HPCHEM1\ECD_L\methods\PL012618.M
 Quant Title : GC Extractables
 QLast Update : Sat Jan 27 04:03:48 2018
 Response via : Initial Calibration
 Integrator: ChemStation 6890 Scale Mode: Large solvent peaks clipped

Volume Inj. : 2 µl
 Signal #1 Phase : ZB-MR1 Signal #2 Phase: ZB-MR2
 Signal #1 Info : 30M x 0.32mm x0.5 Signal #2 Info : 30M x 0.32mm x0.25µm

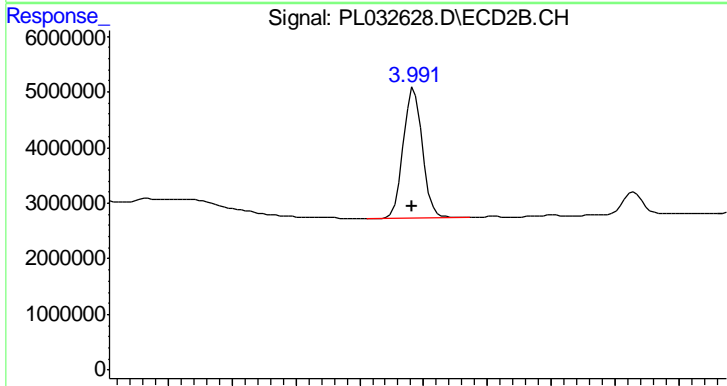




#1 Tetrachloro-m-xylene

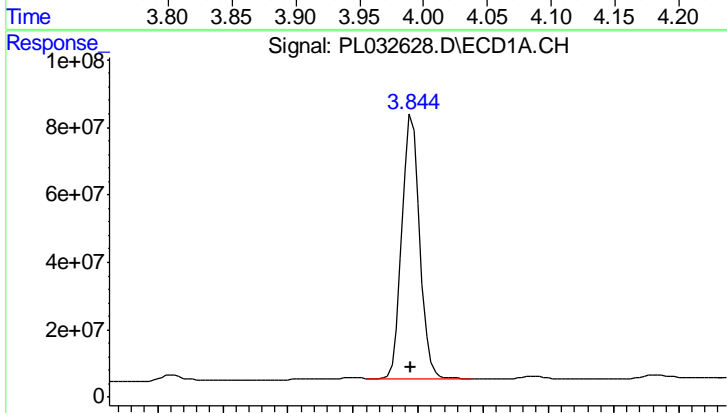
R.T.: 3.408 min
 Delta R.T.: 0.000 min
 Response: 163996089
 Conc: 18.34 ng/ml

Instrument :
 ECD_L
 ClientSampleId :
 EPE-108-4(84-86)MS



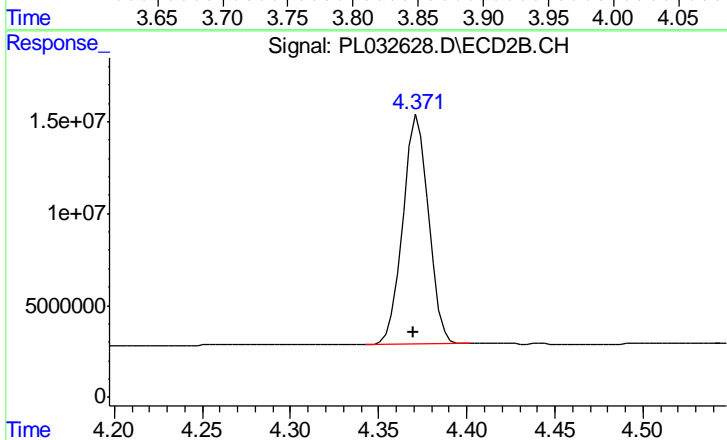
#1 Tetrachloro-m-xylene

R.T.: 3.993 min
 Delta R.T.: 0.001 min
 Response: 24253253
 Conc: 19.37 ng/ml



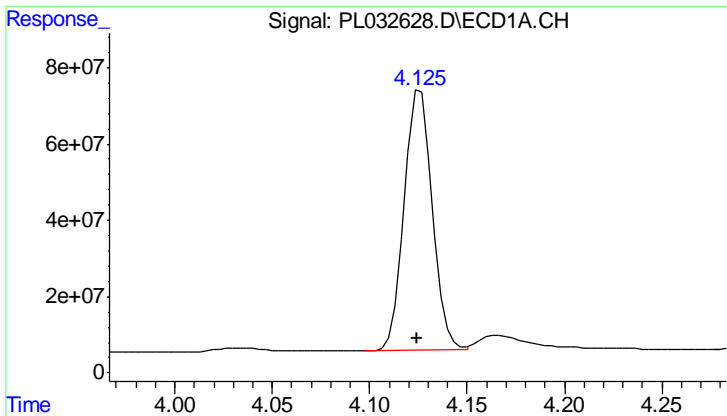
#2 alpha-BHC

R.T.: 3.845 min
 Delta R.T.: 0.001 min
 Response: 737778688
 Conc: 52.43 ng/ml



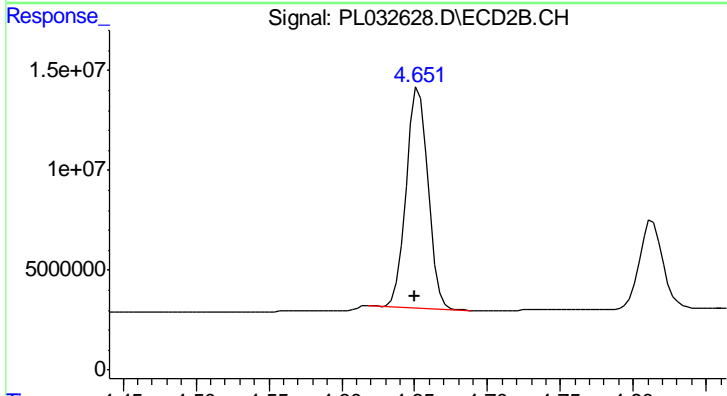
#2 alpha-BHC

R.T.: 4.372 min
 Delta R.T.: 0.003 min
 Response: 125608217
 Conc: 54.23 ng/ml

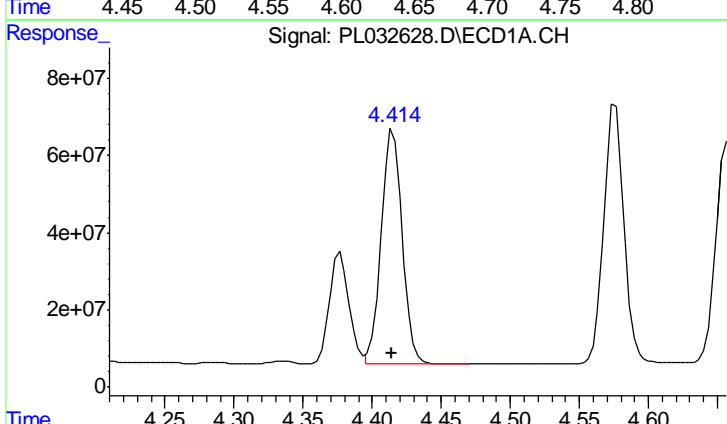


#3 gamma-BHC (Lindane)
 R.T.: 4.126 min
 Delta R.T.: 0.001 min
 Response: 667749162
 Conc: 51.72 ng/ml

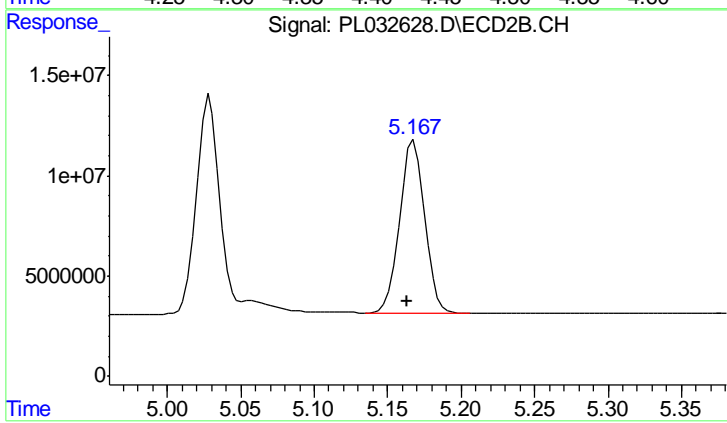
Instrument :
 ECD_L
 ClientSampled :
 EPE-108-4(84-86)MS



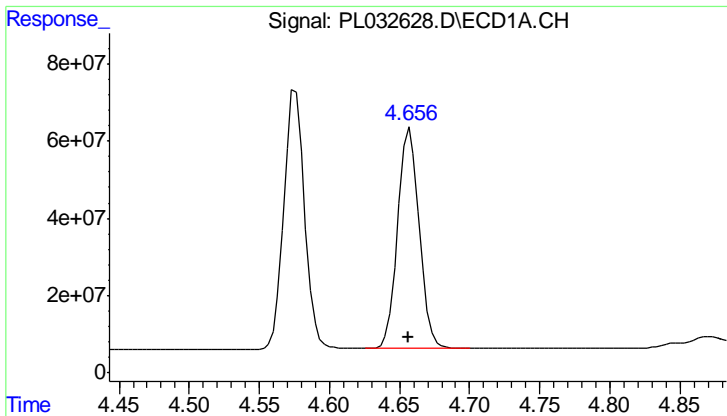
#3 gamma-BHC (Lindane)
 R.T.: 4.653 min
 Delta R.T.: 0.003 min
 Response: 113790310
 Conc: 52.97 ng/ml



#4 Heptachlor
 R.T.: 4.415 min
 Delta R.T.: 0.001 min
 Response: 641076116
 Conc: 48.43 ng/ml

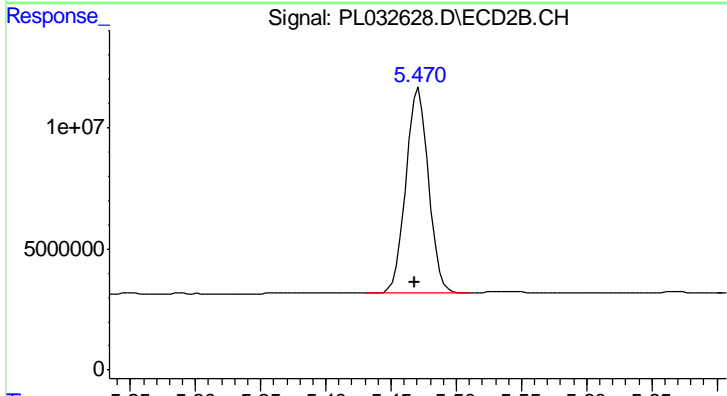


#4 Heptachlor
 R.T.: 5.168 min
 Delta R.T.: 0.004 min
 Response: 102034781
 Conc: 48.87 ng/ml

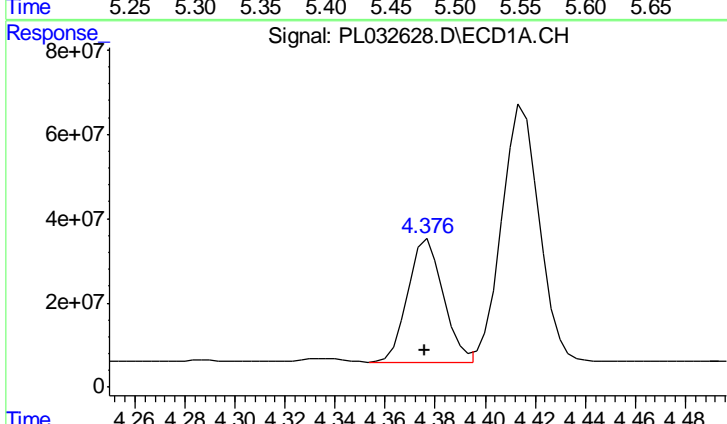


#5 Aldrin
 R.T.: 4.658 min
 Delta R.T.: 0.002 min
 Response: 607174279
 Conc: 47.24 ng/ml

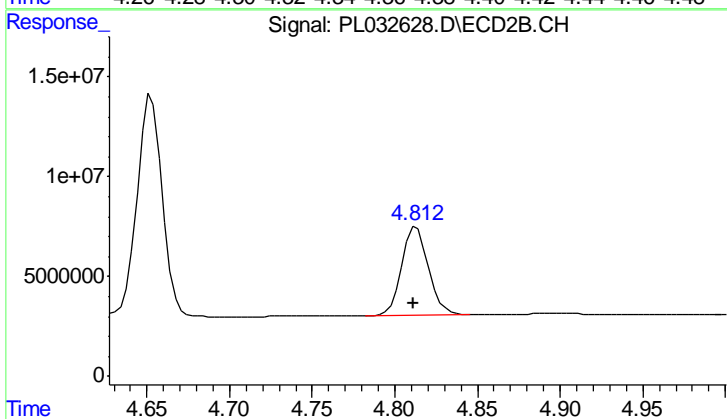
Instrument :
 ECD_L
 ClientSampled :
 EPE-108-4(84-86)MS



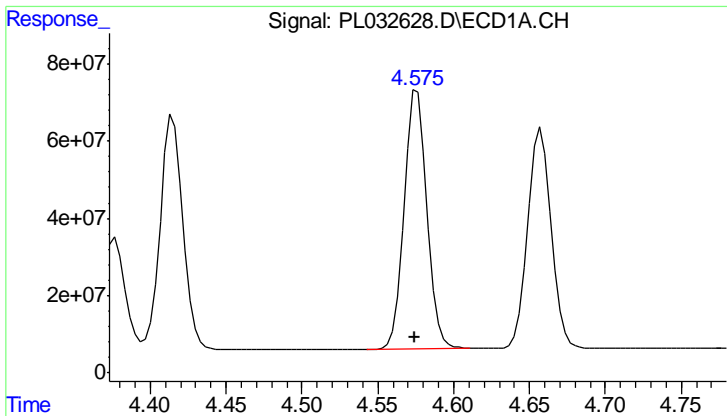
#5 Aldrin
 R.T.: 5.471 min
 Delta R.T.: 0.003 min
 Response: 101804012
 Conc: 48.62 ng/ml



#6 beta-BHC
 R.T.: 4.377 min
 Delta R.T.: 0.001 min
 Response: 286730478
 Conc: 50.20 ng/ml



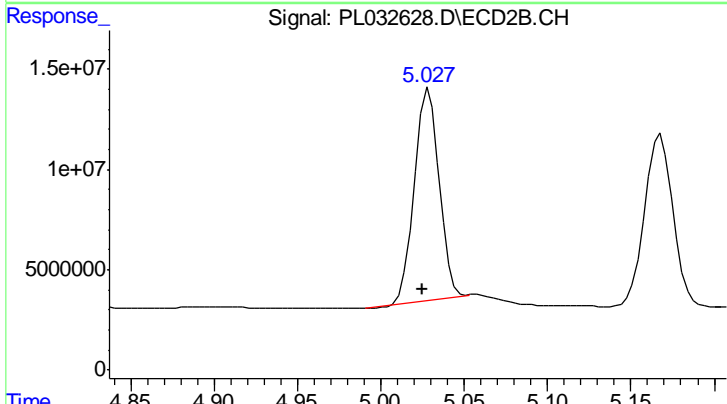
#6 beta-BHC
 R.T.: 4.813 min
 Delta R.T.: 0.002 min
 Response: 49853356
 Conc: 52.23 ng/ml



#7 delta-BHC

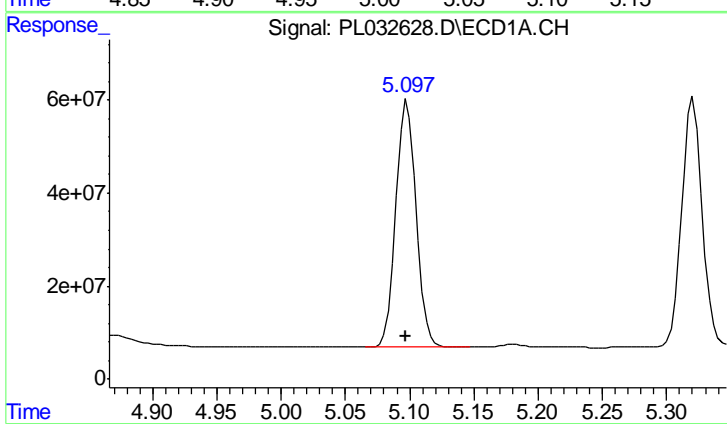
R.T.: 4.576 min
 Delta R.T.: 0.002 min
 Response: 683293498
 Conc: 51.19 ng/ml

Instrument :
 ECD_L
 ClientSampleId :
 EPE-108-4(84-86)MS



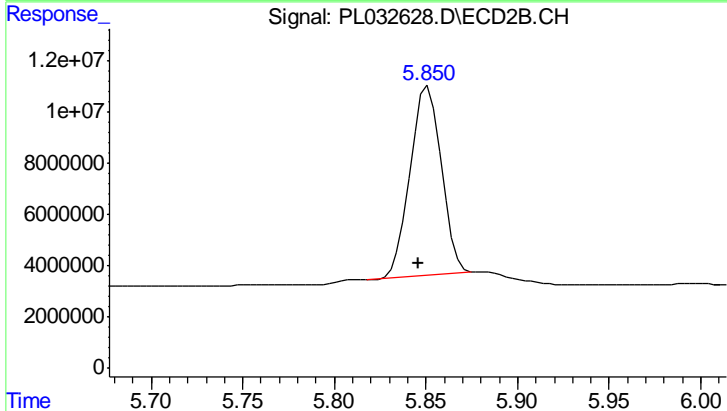
#7 delta-BHC

R.T.: 5.029 min
 Delta R.T.: 0.004 min
 Response: 108152969
 Conc: 48.64 ng/ml



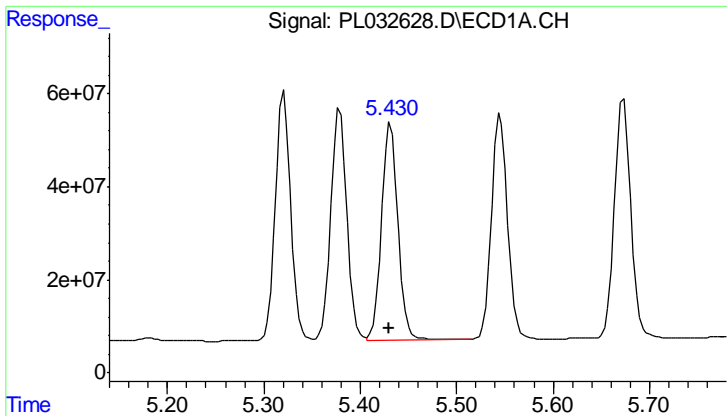
#8 Heptachlor epoxide

R.T.: 5.098 min
 Delta R.T.: 0.001 min
 Response: 584935447
 Conc: 49.42 ng/ml



#8 Heptachlor epoxide

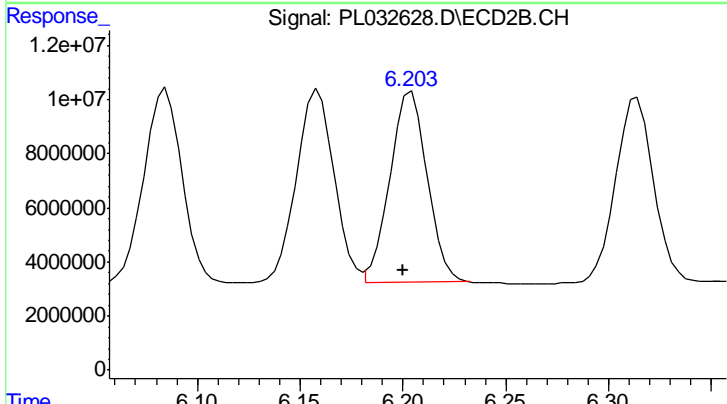
R.T.: 5.851 min
 Delta R.T.: 0.005 min
 Response: 87213259
 Conc: 48.78 ng/ml



#9 Endosulfan I

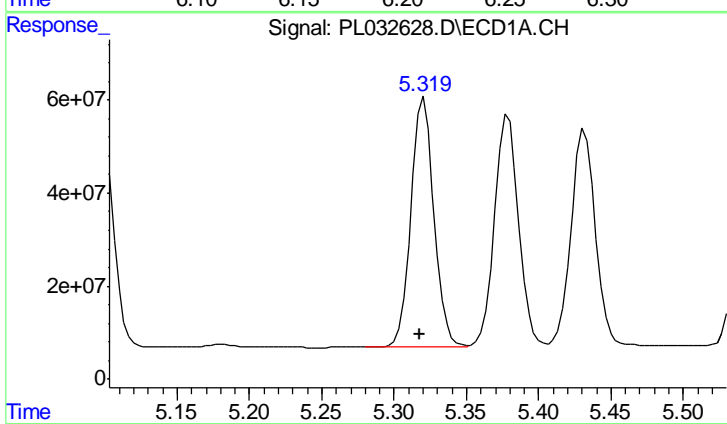
R.T.: 5.432 min
 Delta R.T.: 0.001 min
 Response: 547322210
 Conc: 47.95 ng/ml

Instrument :
 ECD_L
 ClientSampled :
 EPE-108-4(84-86)MS



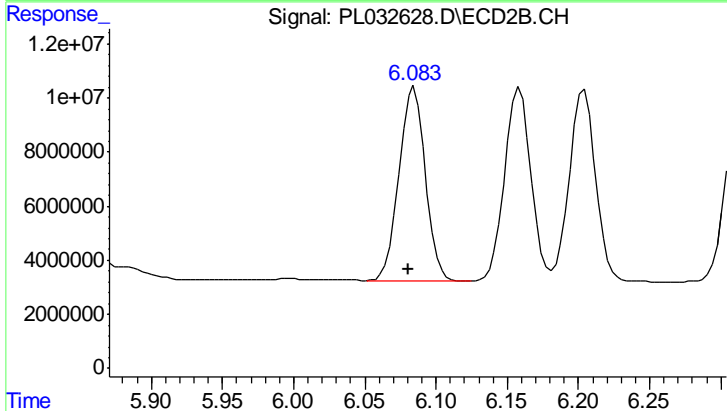
#9 Endosulfan I

R.T.: 6.204 min
 Delta R.T.: 0.004 min
 Response: 88846737
 Conc: 49.24 ng/ml



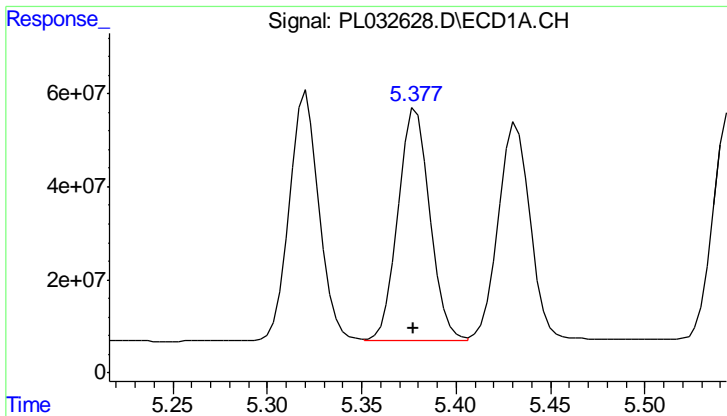
#10 gamma-Chlordane

R.T.: 5.321 min
 Delta R.T.: 0.003 min
 Response: 591679347
 Conc: 45.84 ng/ml



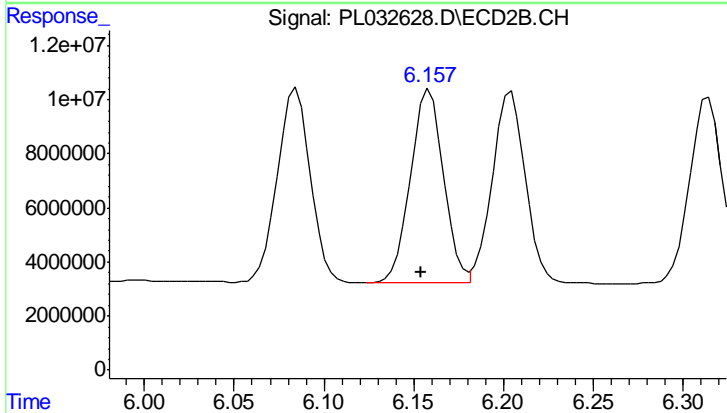
#10 gamma-Chlordane

R.T.: 6.085 min
 Delta R.T.: 0.004 min
 Response: 92227531
 Conc: 47.30 ng/ml

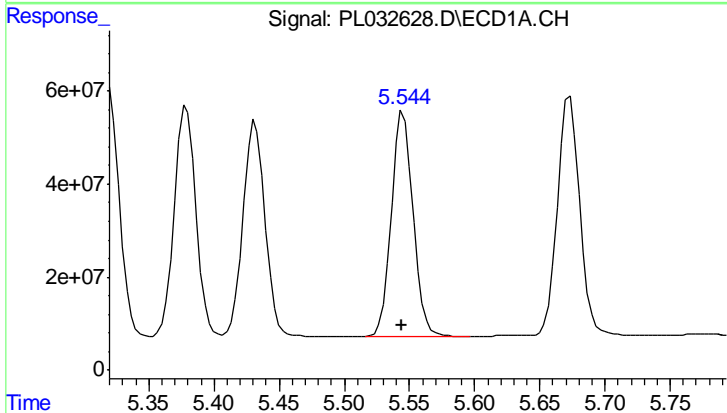


#11 alpha-Chlordane
 R.T.: 5.379 min
 Delta R.T.: 0.002 min
 Response: 575919686
 Conc: 46.29 ng/ml

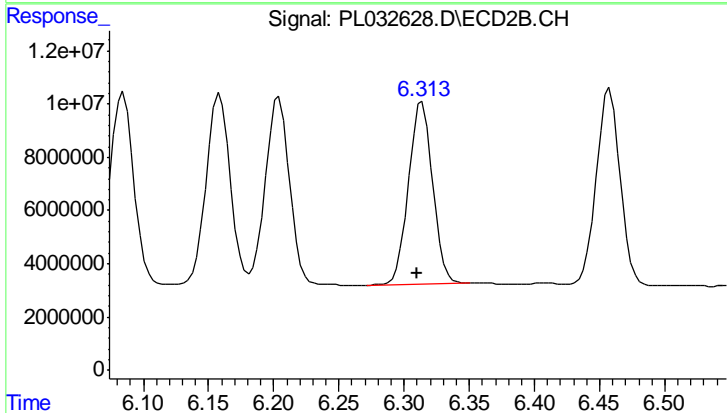
Instrument :
 ECD_L
 ClientSampleId :
 EPE-108-4(84-86)MS



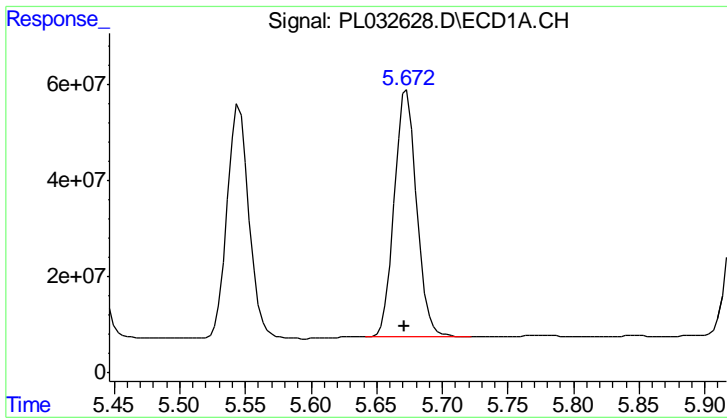
#11 alpha-Chlordane
 R.T.: 6.159 min
 Delta R.T.: 0.005 min
 Response: 91314241
 Conc: 48.18 ng/ml



#12 4,4'-DDE
 R.T.: 5.545 min
 Delta R.T.: 0.001 min
 Response: 562552821
 Conc: 44.28 ng/ml



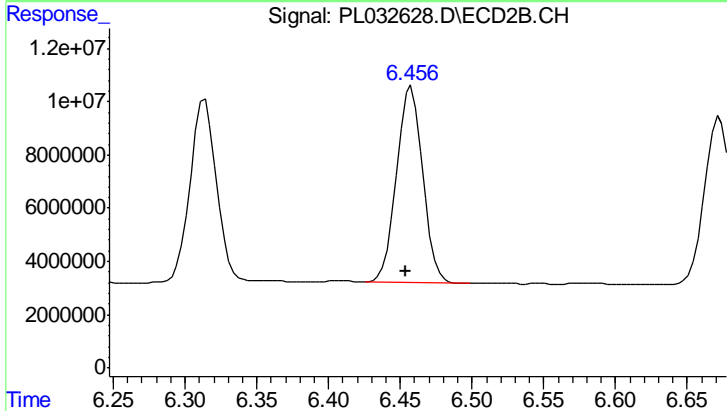
#12 4,4'-DDE
 R.T.: 6.314 min
 Delta R.T.: 0.004 min
 Response: 88231326
 Conc: 46.27 ng/ml



#13 Dieldrin

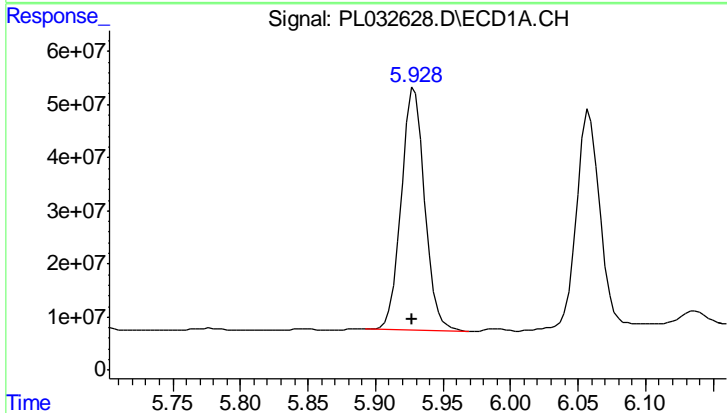
R.T.: 5.673 min
 Delta R.T.: 0.002 min
 Response: 609841453
 Conc: 47.64 ng/ml

Instrument :
 ECD_L
 ClientSampled :
 EPE-108-4(84-86)MS



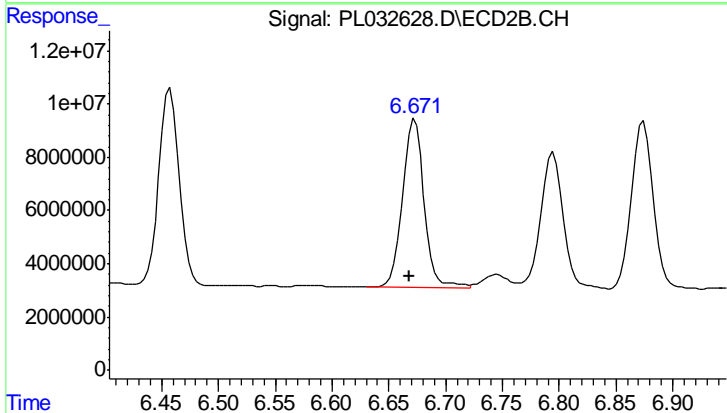
#13 Dieldrin

R.T.: 6.458 min
 Delta R.T.: 0.004 min
 Response: 93463907
 Conc: 48.91 ng/ml



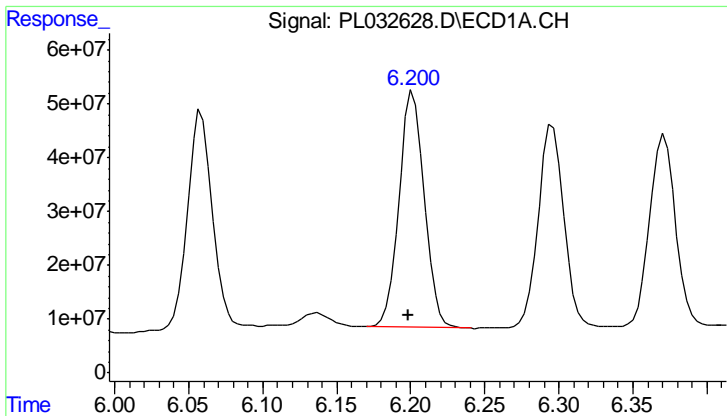
#14 Endrin

R.T.: 5.929 min
 Delta R.T.: 0.002 min
 Response: 552839319
 Conc: 47.34 ng/ml



#14 Endrin

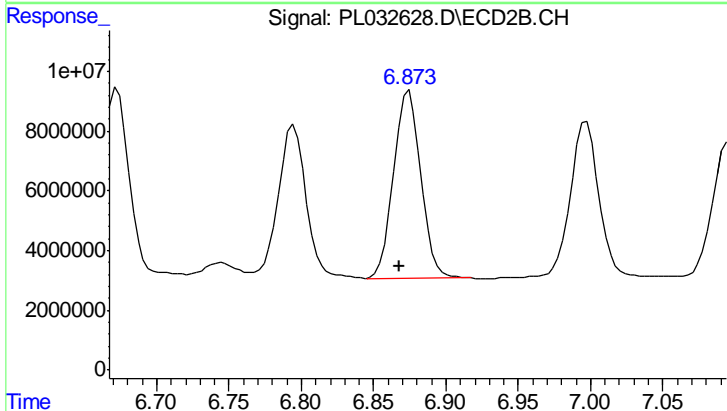
R.T.: 6.673 min
 Delta R.T.: 0.005 min
 Response: 84706450
 Conc: 50.23 ng/ml



#15 Endosulfan II

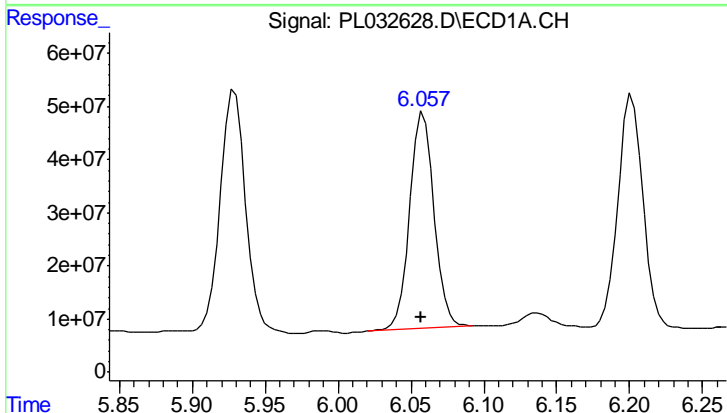
R.T.: 6.202 min
 Delta R.T.: 0.004 min
 Response: 522079497
 Conc: 44.50 ng/ml

Instrument :
 ECD_L
 ClientSampled :
 EPE-108-4(84-86)MS



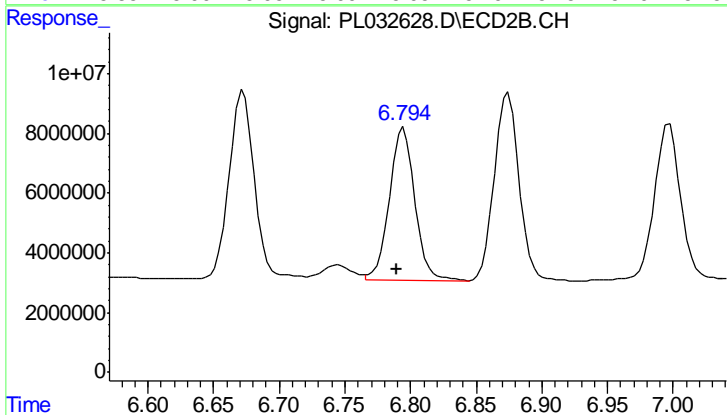
#15 Endosulfan II

R.T.: 6.874 min
 Delta R.T.: 0.007 min
 Response: 81904794
 Conc: 46.52 ng/ml



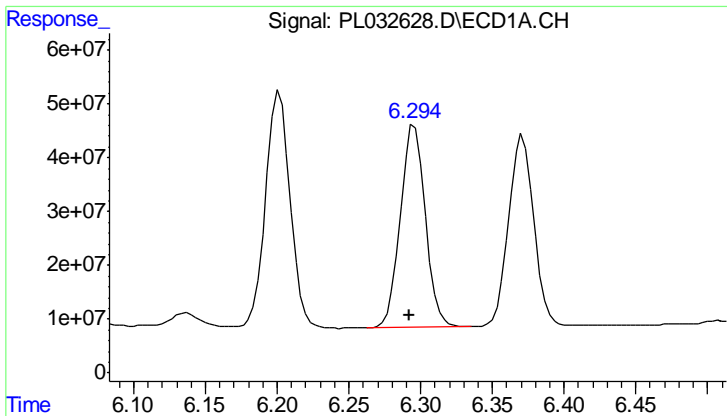
#16 4,4'-DDD

R.T.: 6.059 min
 Delta R.T.: 0.002 min
 Response: 471891460
 Conc: 44.85 ng/ml



#16 4,4'-DDD

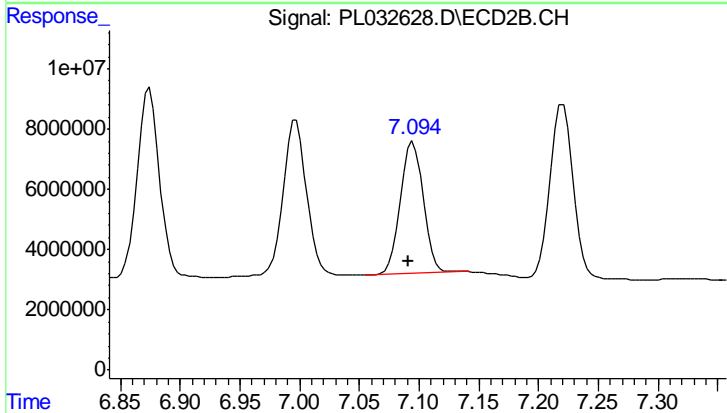
R.T.: 6.795 min
 Delta R.T.: 0.005 min
 Response: 69383959
 Conc: 48.65 ng/ml



#17 4,4'-DDT

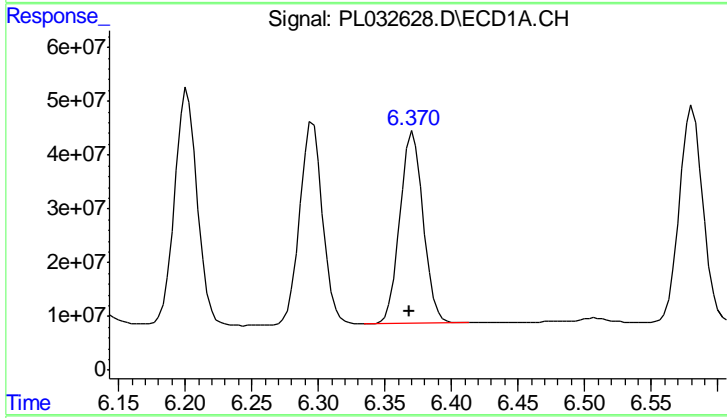
R.T.: 6.296 min
 Delta R.T.: 0.003 min
 Response: 453302442
 Conc: 42.88 ng/ml

Instrument :
 ECD_L
 ClientSampled :
 EPE-108-4(84-86)MS



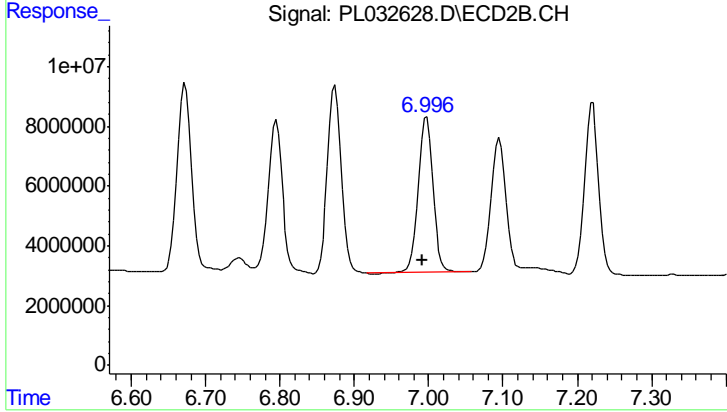
#17 4,4'-DDT

R.T.: 7.095 min
 Delta R.T.: 0.005 min
 Response: 58776696
 Conc: 44.08 ng/ml



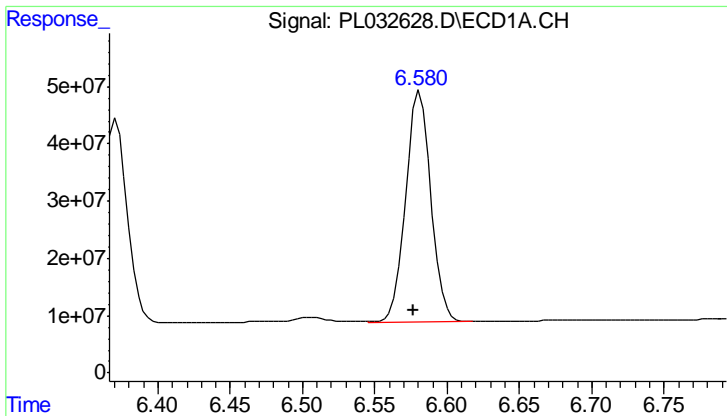
#18 Endrin aldehyde

R.T.: 6.371 min
 Delta R.T.: 0.003 min
 Response: 431500855
 Conc: 43.69 ng/ml



#18 Endrin aldehyde

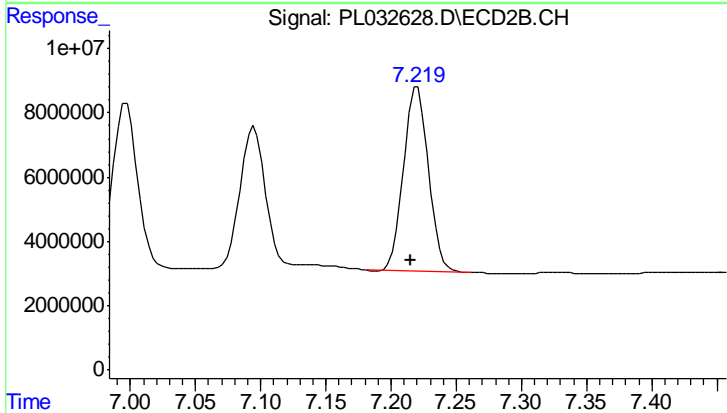
R.T.: 6.997 min
 Delta R.T.: 0.005 min
 Response: 70575802
 Conc: 47.66 ng/ml



#19 Endosulfan Sulfate

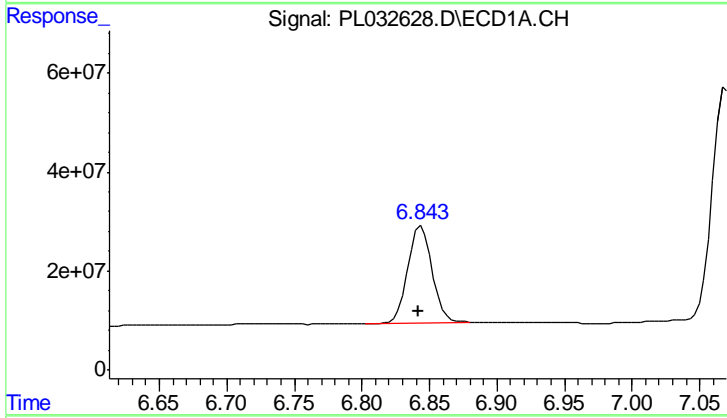
R.T.: 6.581 min
 Delta R.T.: 0.004 min
 Response: 487586553
 Conc: 44.02 ng/ml

Instrument :
 ECD_L
 ClientSampled :
 EPE-108-4(84-86)MS



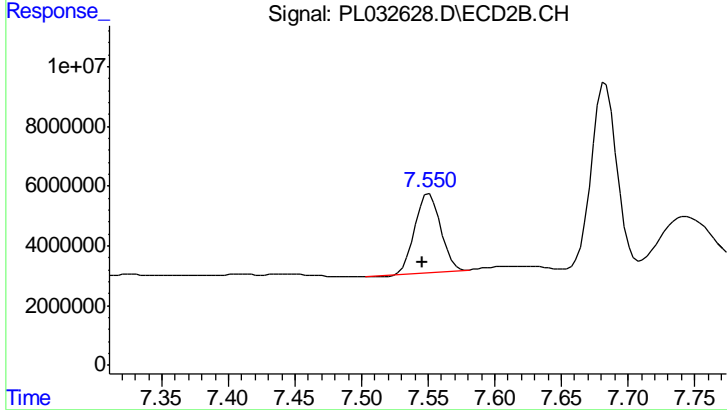
#19 Endosulfan Sulfate

R.T.: 7.220 min
 Delta R.T.: 0.005 min
 Response: 75945766
 Conc: 47.09 ng/ml



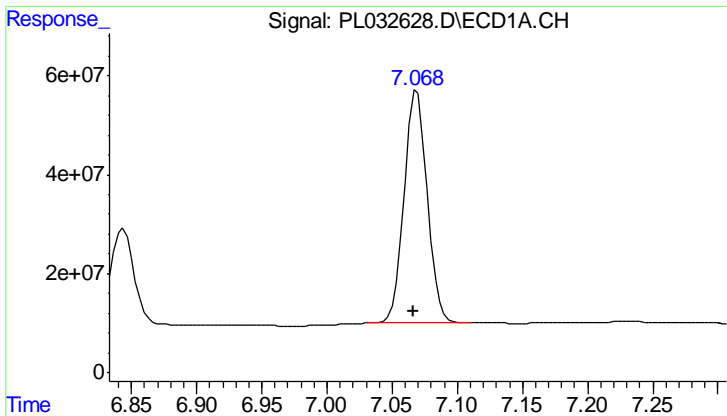
#20 Methoxychlor

R.T.: 6.844 min
 Delta R.T.: 0.002 min
 Response: 246232126
 Conc: 42.38 ng/ml



#20 Methoxychlor

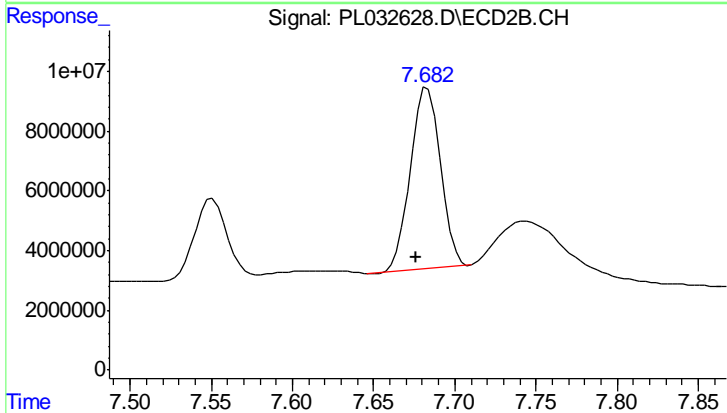
R.T.: 7.551 min
 Delta R.T.: 0.005 min
 Response: 34884805
 Conc: 42.80 ng/ml



#21 Endrin ketone

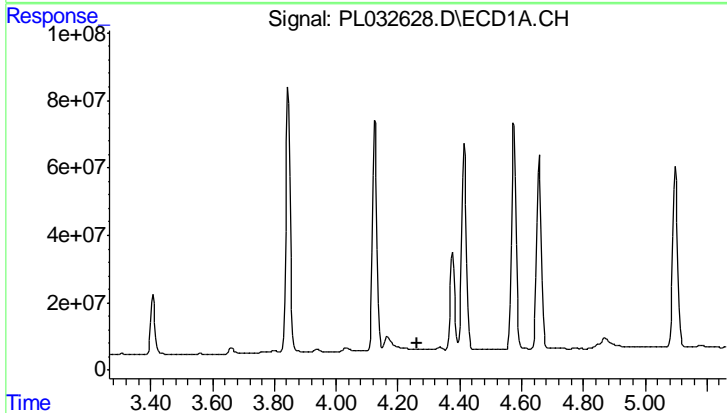
R.T.: 7.069 min
 Delta R.T.: 0.003 min
 Response: 576910884
 Conc: 46.06 ng/ml

Instrument :
 ECD_L
 ClientSampleId :
 EPE-108-4(84-86)MS



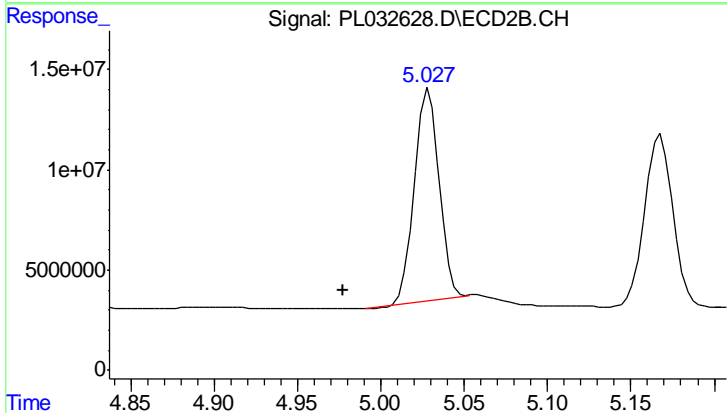
#21 Endrin ketone

R.T.: 7.683 min
 Delta R.T.: 0.007 min
 Response: 78369188
 Conc: 43.40 ng/ml



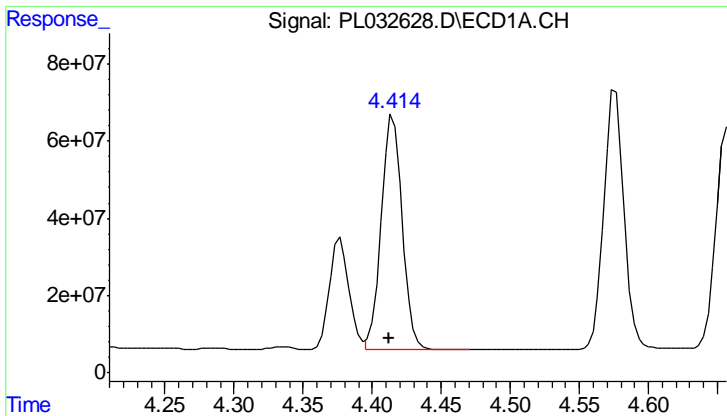
#23 Chlordane-1

R.T.: 0.000 min
 Exp R.T. : 4.263 min
 Response: 0
 Conc: N.D.



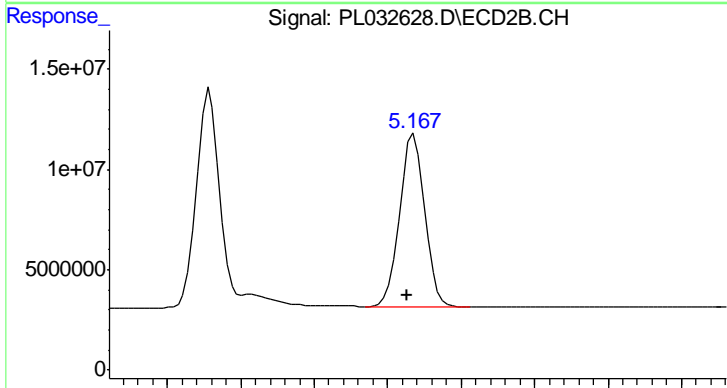
#23 Chlordane-1

R.T.: 5.029 min
 Delta R.T.: 0.051 min
 Response: 108152969
 Conc: 1398.67 ng/ml

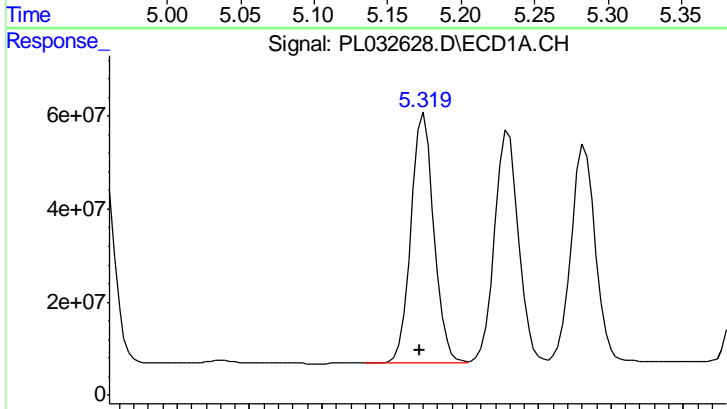


#24 Chlordane-2
 R.T.: 4.415 min
 Delta R.T.: 0.003 min
 Response: 641076116
 Conc: 1044.04 ng/ml

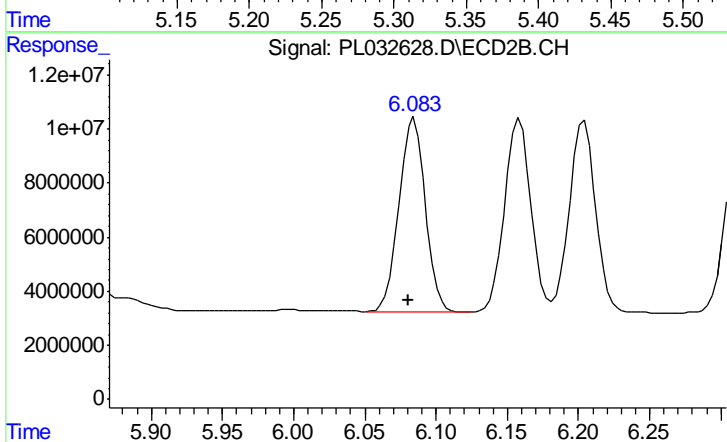
Instrument :
 ECD_L
 ClientSampleId :
 EPE-108-4(84-86)MS



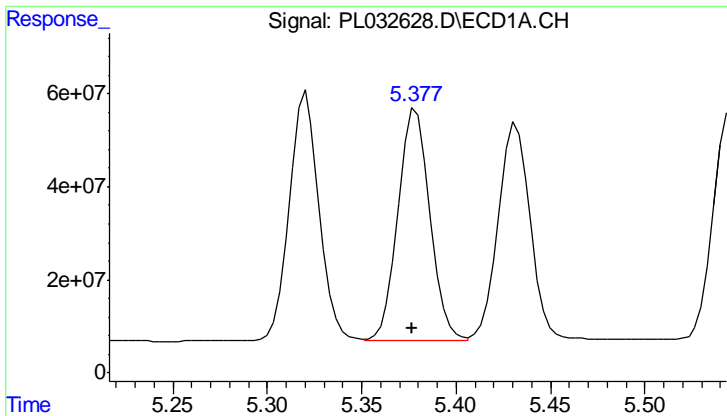
#24 Chlordane-2
 R.T.: 5.168 min
 Delta R.T.: 0.005 min
 Response: 102034781
 Conc: 869.50 ng/ml



#25 Chlordane-3
 R.T.: 5.321 min
 Delta R.T.: 0.003 min
 Response: 591679347
 Conc: 396.40 ng/ml



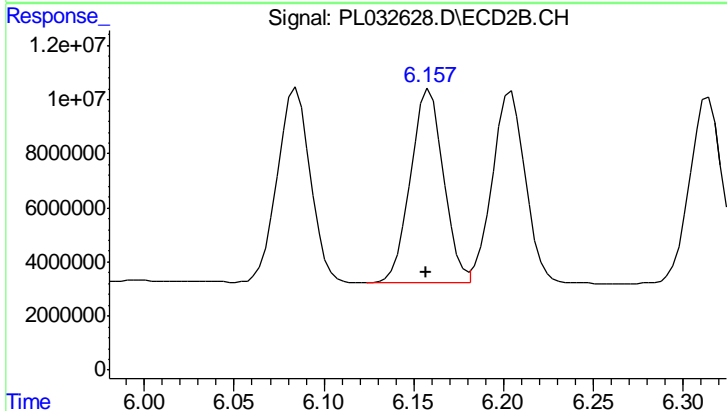
#25 Chlordane-3
 R.T.: 6.085 min
 Delta R.T.: 0.004 min
 Response: 92227531
 Conc: 334.66 ng/ml



#26 Chlordane-4

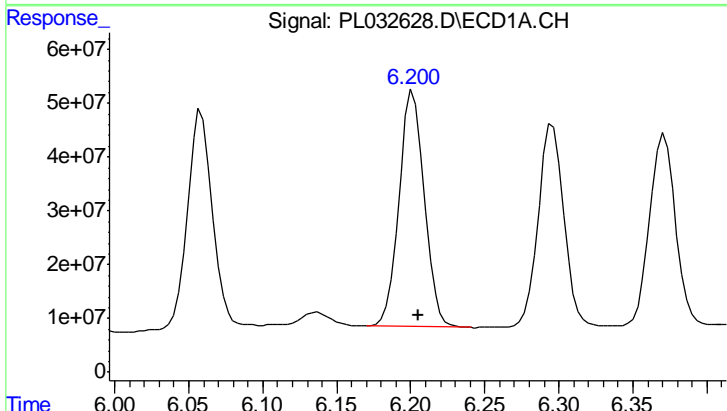
R.T.: 5.379 min
 Delta R.T.: 0.002 min
 Response: 575919686
 Conc: 447.76 ng/ml

Instrument :
 ECD_L
 ClientSampleId :
 EPE-108-4(84-86)MS



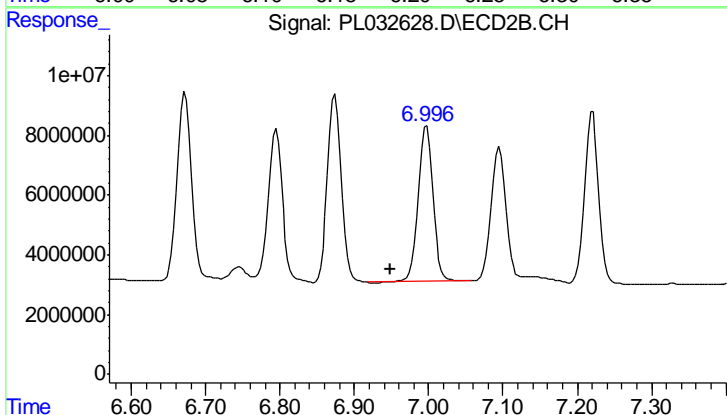
#26 Chlordane-4

R.T.: 6.159 min
 Delta R.T.: 0.002 min
 Response: 91314241
 Conc: 279.50 ng/ml



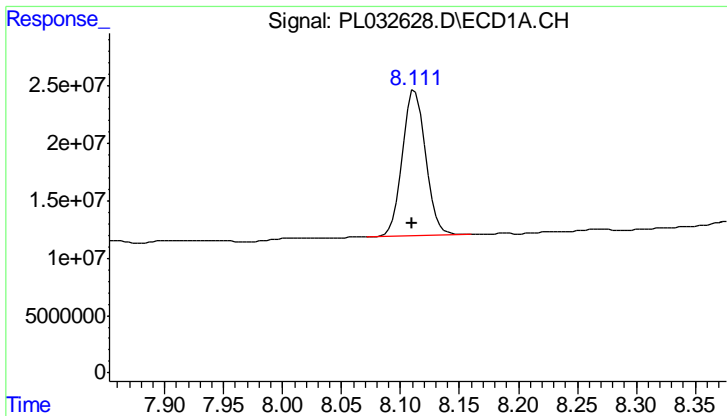
#27 Chlordane-5

R.T.: 6.202 min
 Delta R.T.: -0.004 min
 Response: 522079497
 Conc: 1055.91 ng/ml



#27 Chlordane-5

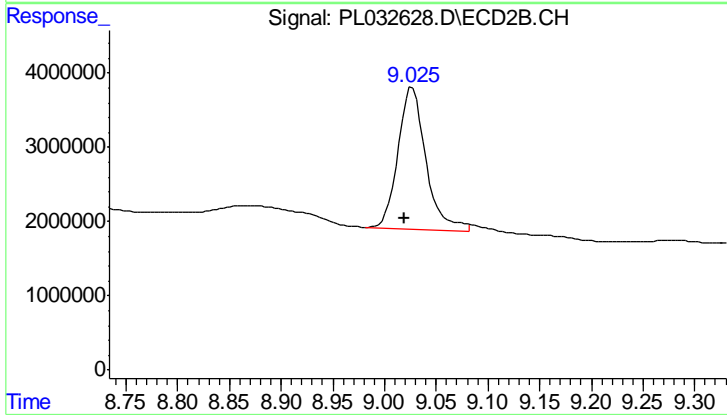
R.T.: 6.997 min
 Delta R.T.: 0.049 min
 Response: 70575802
 Conc: 1171.08 ng/ml



#28 Decachlorobiphenyl

R.T.: 8.113 min
Delta R.T.: 0.003 min
Response: 171518899
Conc: 14.74 ng/ml

Instrument :
ECD_L
ClientSampled :
EPE-108-4(84-86)MS



#28 Decachlorobiphenyl

R.T.: 9.027 min
Delta R.T.: 0.008 min
Response: 36013894
Conc: 18.93 ng/ml