

Data Path : P:\HPCHEM1\ECD_L\Data\PL012918\
 Data File : PL032684.D
 Signal(s) : Signal #1: ECD1A.CH Signal #2: ECD2B.CH
 Acq On : 30 Jan 2018 4:54
 Operator : UA\AJ
 Sample : J1290-18
 Misc :
 ALS Vial : 69 Sample Multiplier: 1

Instrument :
 ECD_L
 ClientSampleId :
 SB-46-9.5-10.0

Integration File signal 1: autoint1.e
 Integration File signal 2: autoint2.e
 Quant Time: Jan 30 08:28:52 2018
 Quant Method : P:\HPCHEM1\ECD_L\methods\PL012618.M
 Quant Title : GC Extractables
 QLast Update : Sat Jan 27 04:03:48 2018
 Response via : Initial Calibration
 Integrator: ChemStation 6890 Scale Mode: Large solvent peaks clipped

Volume Inj. : 2 µl
 Signal #1 Phase : ZB-MR1 Signal #2 Phase: ZB-MR2
 Signal #1 Info : 30M x 0.32mm x0.5 Signal #2 Info : 30M x 0.32mm x0.25µm

Compound	RT#1	RT#2	Resp#1	Resp#2	ng/ml	ng/ml

System Monitoring Compounds						
1) SA Tetrachlo...	3.408	3.993	123.2E6	17525887	13.779	13.995
28) SA Decachlor...	8.114	9.026	105.0E6	21991717	9.025	11.562 #
Target Compounds						
6) B beta-BHC	4.337f	0.000	15698402	0	2.749	N.D. #
7) B delta-BHC	0.000	5.029	0	1643186	N.D.	0.739 #
10) B gamma-Chl...	5.324	0.000	25364915	0	1.965	N.D. #
11) B alpha-Chl...	5.324f	0.000	25364915	0	2.039	N.D. #
12) B 4,4'-DDE	5.547	6.314	102.6E6	14848132	8.076	7.786
15) B Endosulfa...	6.138f	6.799f	24032822	4186338	2.048	2.378
16) A 4,4'-DDD	0.000	6.799	0	4186338	N.D.	2.935 #
17) MA 4,4'-DDT	6.293	7.072	9303581	2421826	0.880	1.816 #
23) Chlordane-1	0.000	5.029	0	1643186	N.D.	21.250 #
25) Chlordane-3	5.324	0.000	25364915	0	16.993	N.D. #
26) Chlordane-4	5.324	0.000	25364915	0	19.720	N.D. #
27) Chlordane-5	6.138	0.000	24032822	0	48.607	N.D. #

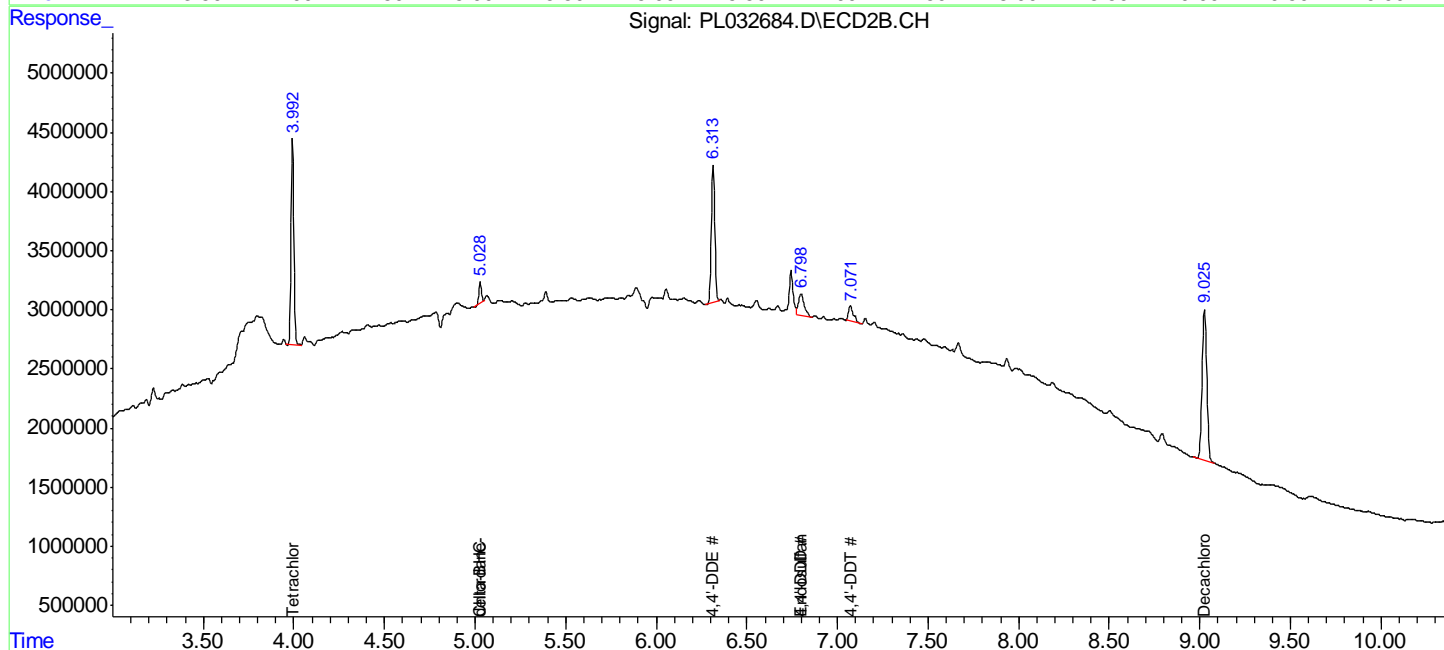
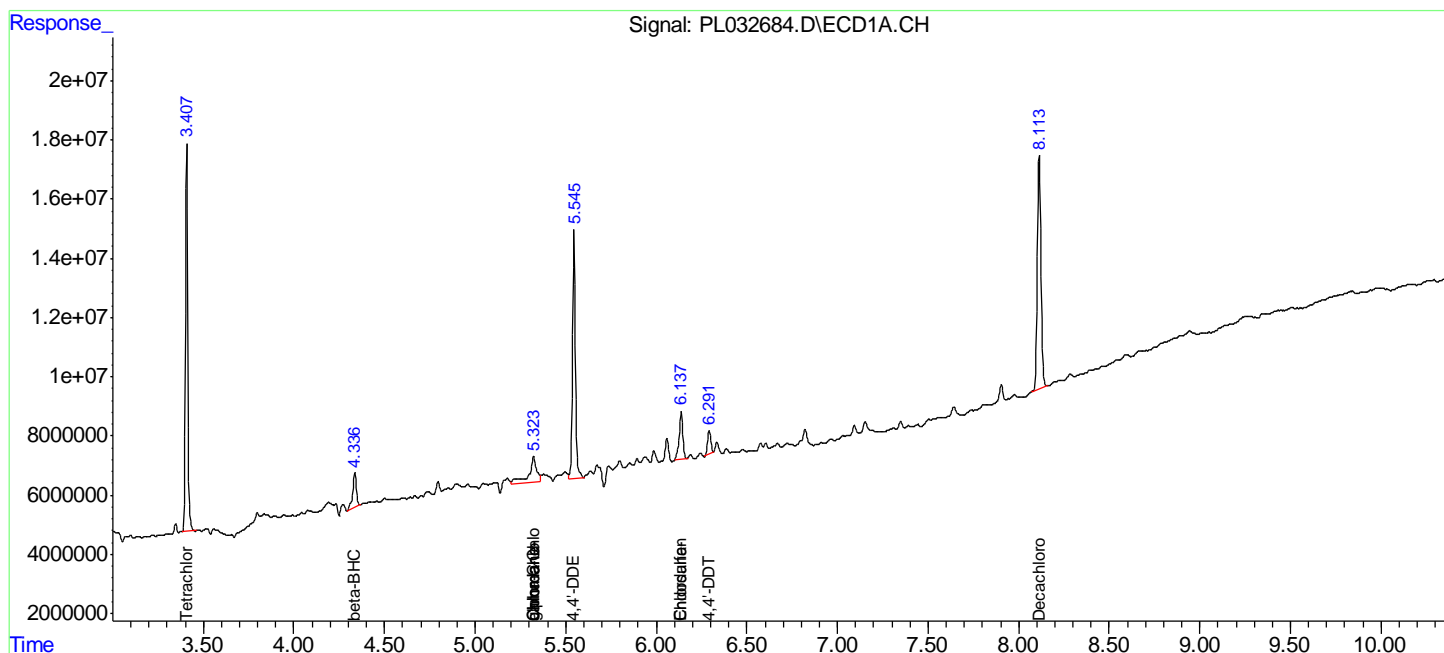
(f)=RT Delta > 1/2 Window (#)=Amounts differ by > 25% (m)=manual int.

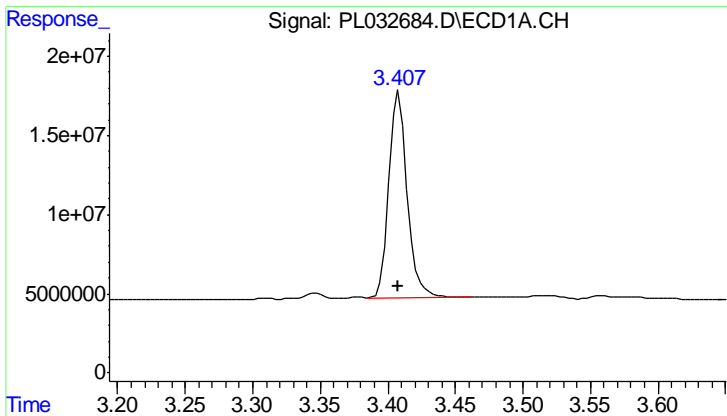
Data Path : P:\HPCHEM1\ECD_L\Data\PL012918\
 Data File : PL032684.D
 Signal(s) : Signal #1: ECD1A.CH Signal #2: ECD2B.CH
 Acq On : 30 Jan 2018 4:54
 Operator : UA\AJ
 Sample : J1290-18
 Misc :
 ALS Vial : 69 Sample Multiplier: 1

Instrument :
 ECD_L
 Client Sampled :
 SB-46-9.5-10.0

Integration File signal 1: autoint1.e
 Integration File signal 2: autoint2.e
 Quant Time: Jan 30 08:28:52 2018
 Quant Method : P:\HPCHEM1\ECD_L\methods\PL012618.M
 Quant Title : GC Extractables
 QLast Update : Sat Jan 27 04:03:48 2018
 Response via : Initial Calibration
 Integrator: ChemStation 6890 Scale Mode: Large solvent peaks clipped

Volume Inj. : 2 µl
 Signal #1 Phase : ZB-MR1 Signal #2 Phase: ZB-MR2
 Signal #1 Info : 30M x 0.32mm x0.5 Signal #2 Info : 30M x 0.32mm x0.25µm

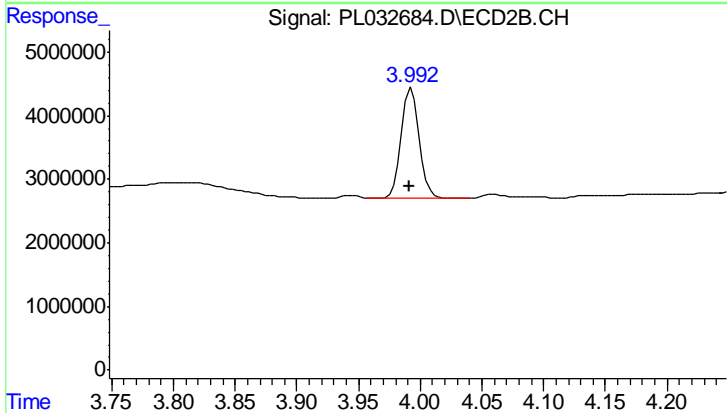




#1 Tetrachloro-m-xylene

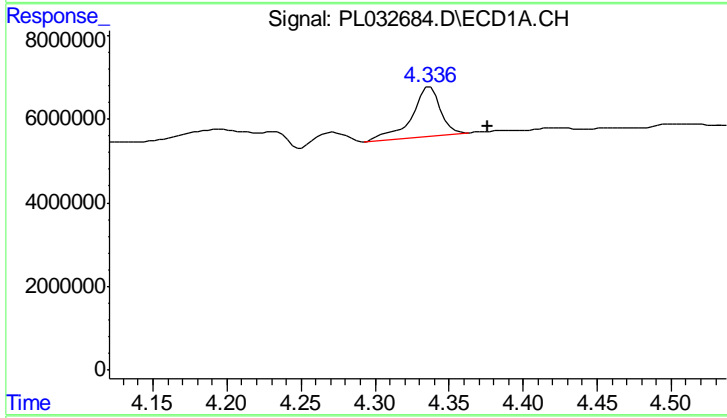
R.T.: 3.408 min
 Delta R.T.: 0.001 min
 Response: 123188409
 Conc: 13.78 ng/ml

Instrument :
 ECD_L
 ClientSampleId :
 SB-46-9.5-10.0



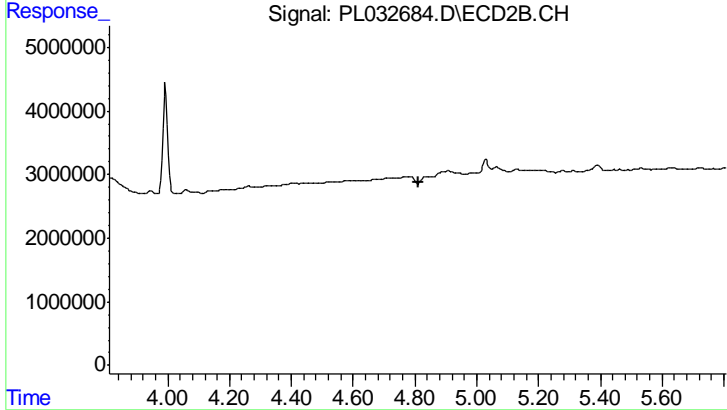
#1 Tetrachloro-m-xylene

R.T.: 3.993 min
 Delta R.T.: 0.002 min
 Response: 17525887
 Conc: 13.99 ng/ml



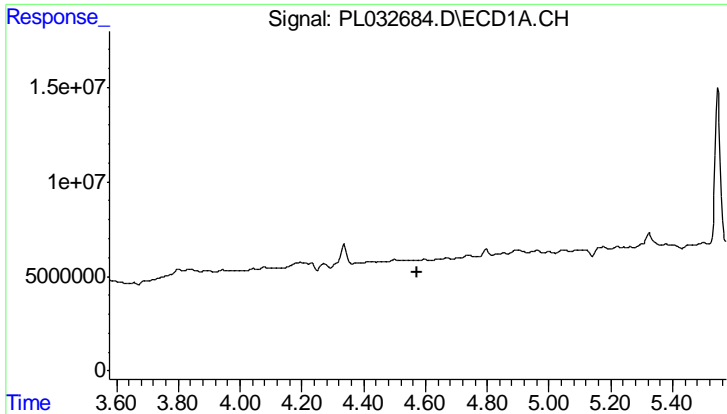
#6 beta-BHC

R.T.: 4.337 min
 Delta R.T.: -0.039 min
 Response: 15698402
 Conc: 2.75 ng/ml



#6 beta-BHC

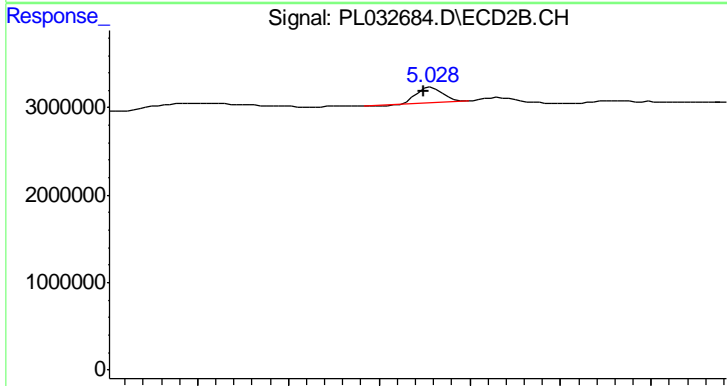
R.T.: 0.000 min
 Exp R.T. : 4.811 min
 Response: 0
 Conc: N.D.



#7 delta-BHC

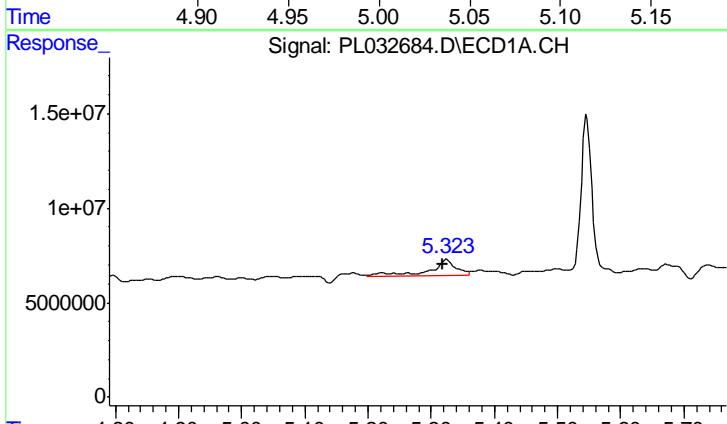
R.T.: 0.000 min
 Exp R.T.: 4.574 min
 Response: 0
 Conc: N.D.

Instrument :
 ECD_L
 ClientSampleId :
 SB-46-9.5-10.0



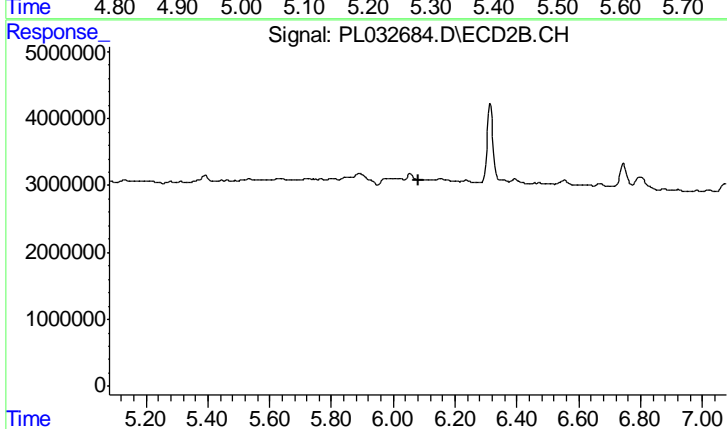
#7 delta-BHC

R.T.: 5.029 min
 Delta R.T.: 0.005 min
 Response: 1643186
 Conc: 0.74 ng/ml



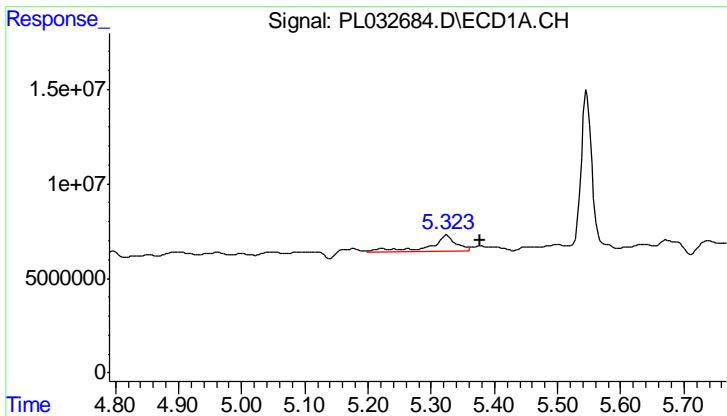
#10 gamma-Chlordane

R.T.: 5.324 min
 Delta R.T.: 0.007 min
 Response: 25364915
 Conc: 1.97 ng/ml



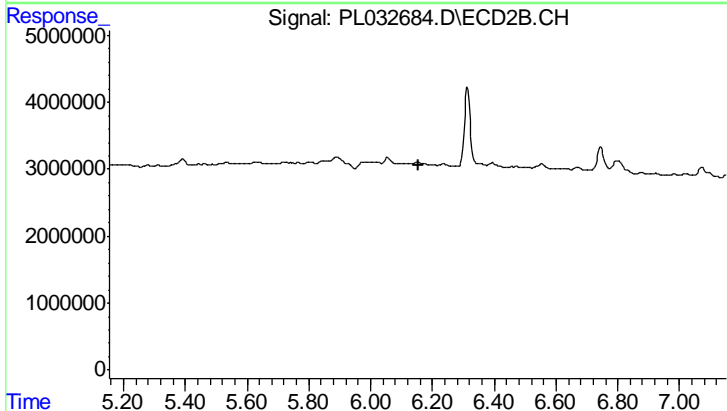
#10 gamma-Chlordane

R.T.: 0.000 min
 Exp R.T.: 6.081 min
 Response: 0
 Conc: N.D.

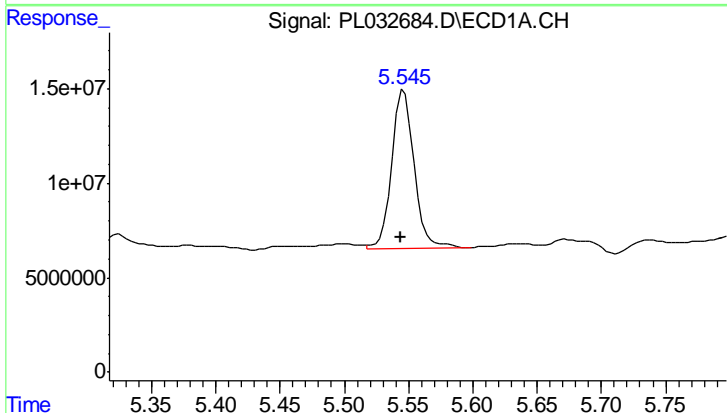


#11 alpha-Chlordane
 R.T.: 5.324 min
 Delta R.T.: -0.053 min
 Response: 25364915
 Conc: 2.04 ng/ml

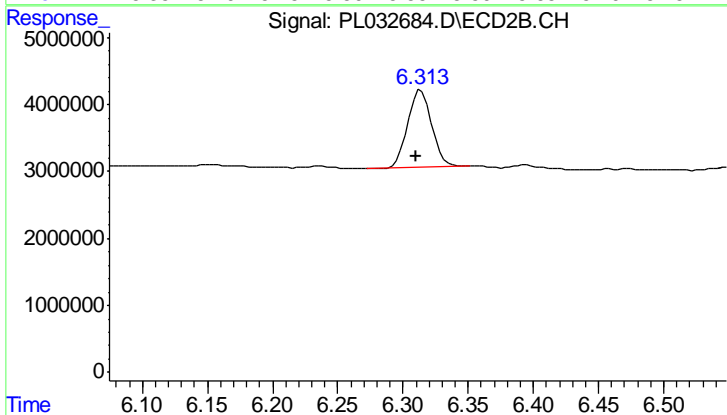
Instrument :
 ECD_L
 ClientSampled :
 SB-46-9.5-10.0



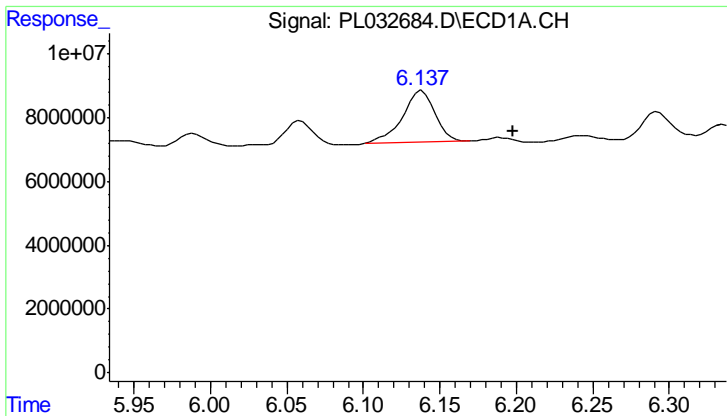
#11 alpha-Chlordane
 R.T.: 0.000 min
 Exp R.T.: 6.154 min
 Response: 0
 Conc: N.D.



#12 4,4'-DDE
 R.T.: 5.547 min
 Delta R.T.: 0.003 min
 Response: 102617188
 Conc: 8.08 ng/ml



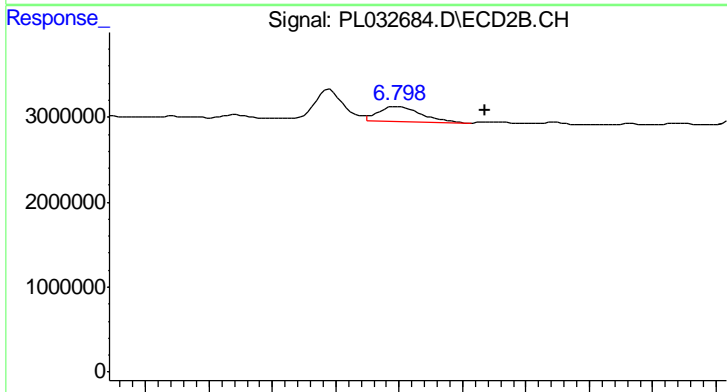
#12 4,4'-DDE
 R.T.: 6.314 min
 Delta R.T.: 0.004 min
 Response: 14848132
 Conc: 7.79 ng/ml



#15 Endosulfan II

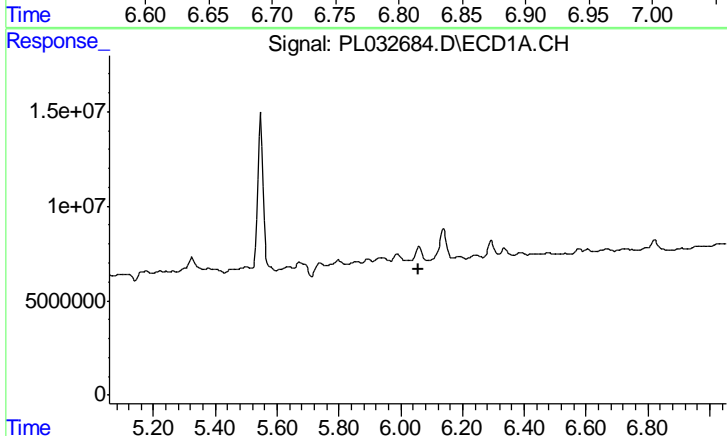
R.T.: 6.138 min
 Delta R.T.: -0.060 min
 Response: 24032822
 Conc: 2.05 ng/ml

Instrument :
 ECD_L
 ClientSampleId :
 SB-46-9.5-10.0



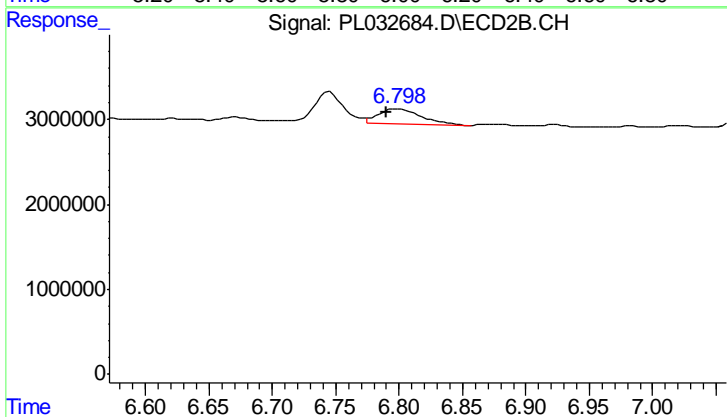
#15 Endosulfan II

R.T.: 6.799 min
 Delta R.T.: -0.069 min
 Response: 4186338
 Conc: 2.38 ng/ml



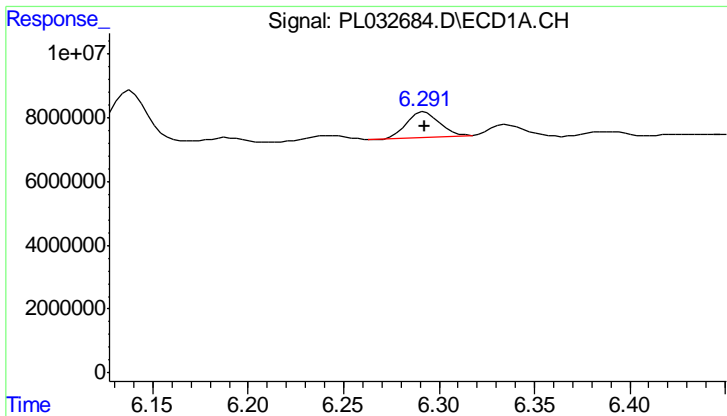
#16 4,4'-DDD

R.T.: 0.000 min
 Exp R.T. : 6.057 min
 Response: 0
 Conc: N.D.



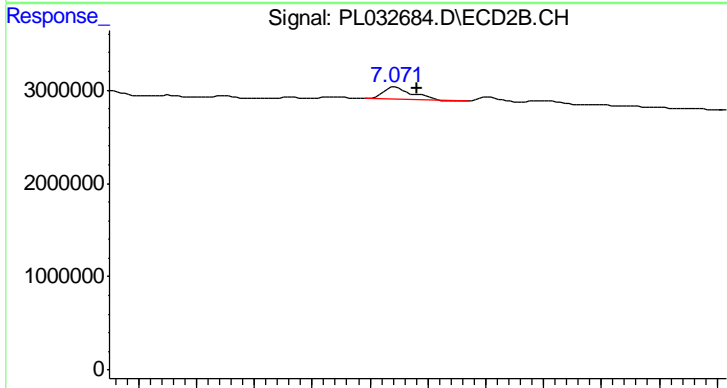
#16 4,4'-DDD

R.T.: 6.799 min
 Delta R.T.: 0.009 min
 Response: 4186338
 Conc: 2.94 ng/ml

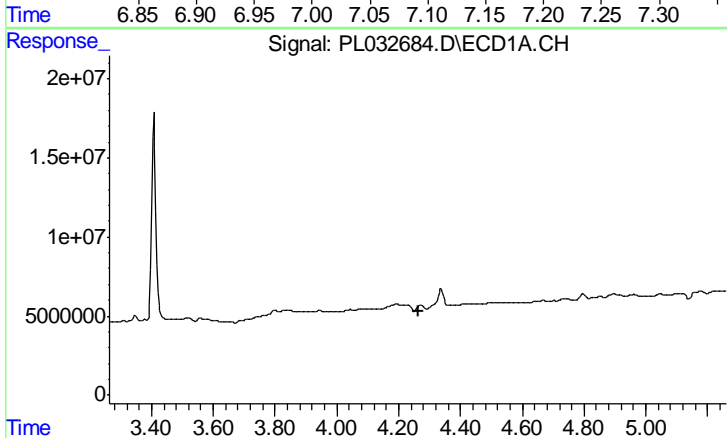


#17 4,4'-DDT
 R.T.: 6.293 min
 Delta R.T.: 0.000 min
 Response: 9303581
 Conc: 0.88 ng/ml

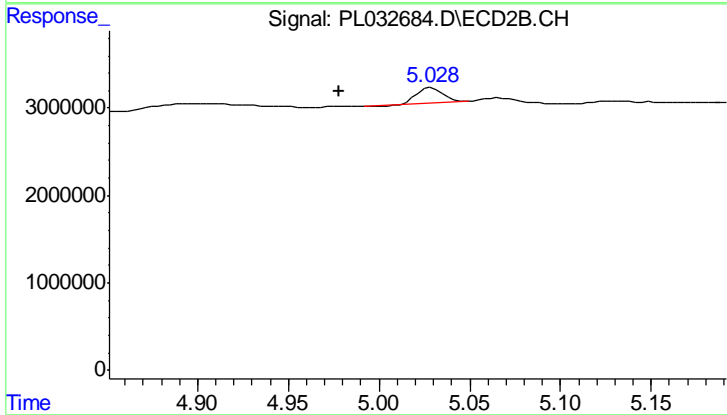
Instrument :
 ECD_L
 ClientSampleId :
 SB-46-9.5-10.0



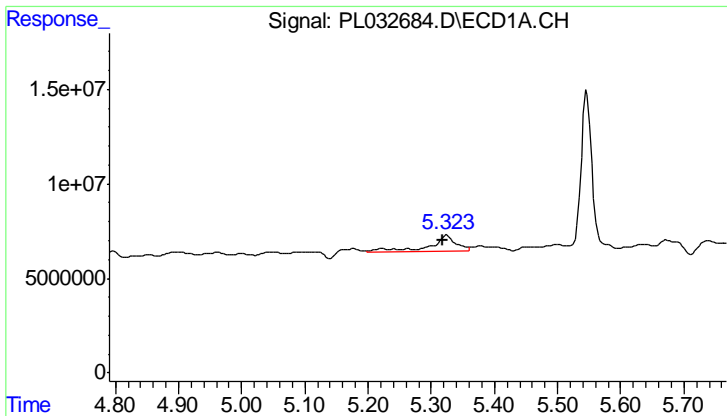
#17 4,4'-DDT
 R.T.: 7.072 min
 Delta R.T.: -0.018 min
 Response: 2421826
 Conc: 1.82 ng/ml



#23 Chlordane-1
 R.T.: 0.000 min
 Exp R.T. : 4.263 min
 Response: 0
 Conc: N.D.



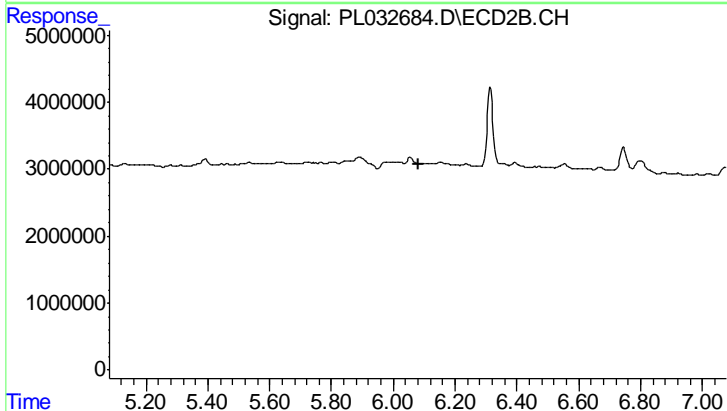
#23 Chlordane-1
 R.T.: 5.029 min
 Delta R.T.: 0.052 min
 Response: 1643186
 Conc: 21.25 ng/ml



#25 Chlordane-3

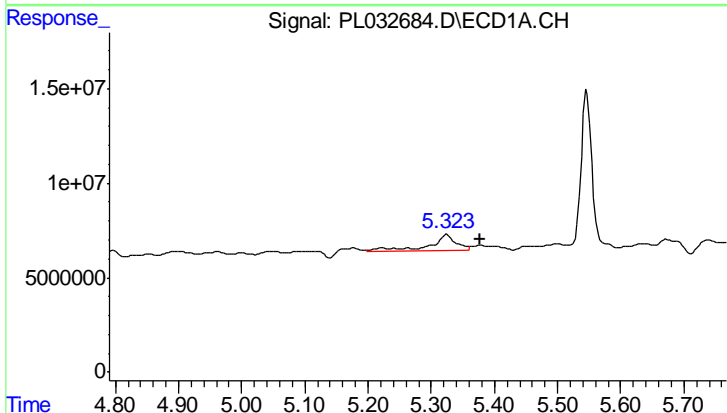
R.T.: 5.324 min
 Delta R.T.: 0.006 min
 Response: 25364915
 Conc: 16.99 ng/ml

Instrument :
 ECD_L
 ClientSampleId :
 SB-46-9.5-10.0



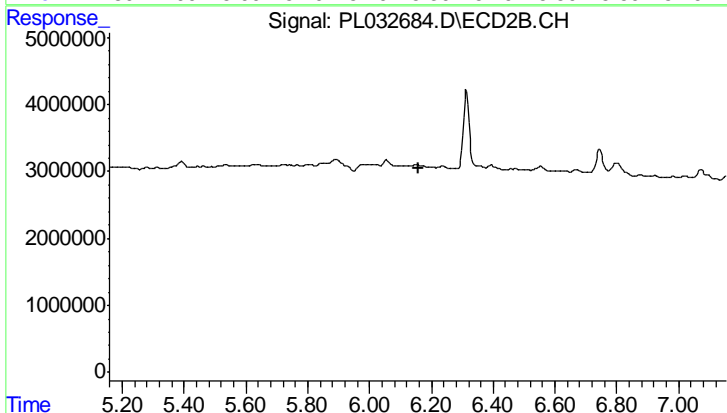
#25 Chlordane-3

R.T.: 0.000 min
 Exp R.T. : 6.080 min
 Response: 0
 Conc: N.D.



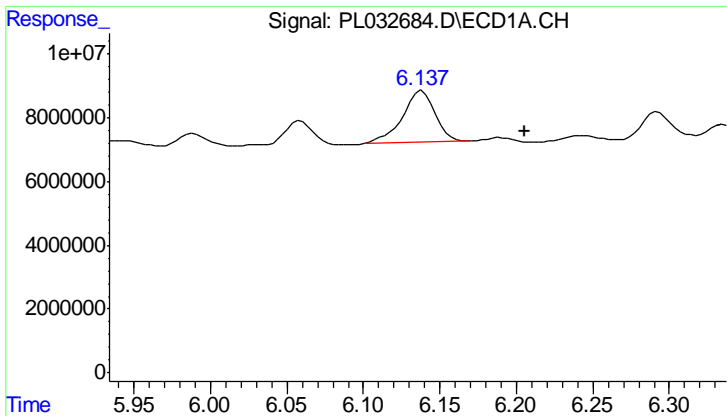
#26 Chlordane-4

R.T.: 5.324 min
 Delta R.T.: -0.052 min
 Response: 25364915
 Conc: 19.72 ng/ml



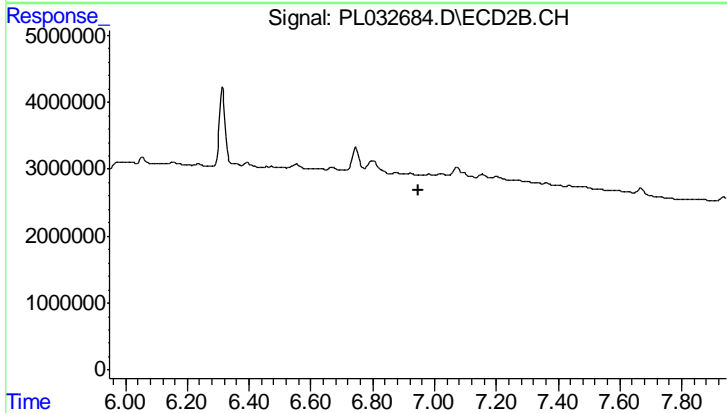
#26 Chlordane-4

R.T.: 0.000 min
 Exp R.T. : 6.157 min
 Response: 0
 Conc: N.D.

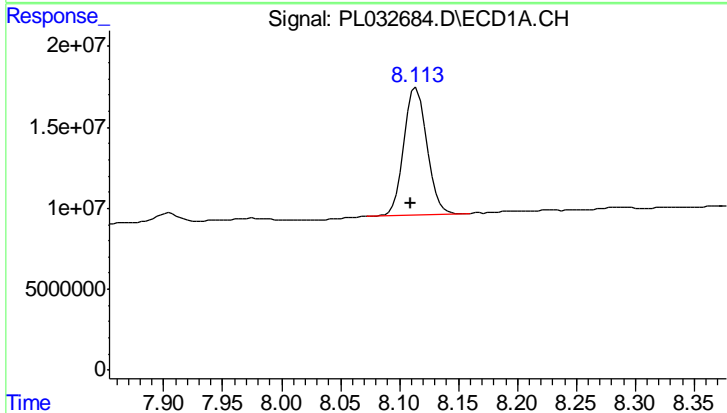


#27 Chlordane-5
 R.T.: 6.138 min
 Delta R.T.: -0.067 min
 Response: 24032822
 Conc: 48.61 ng/ml

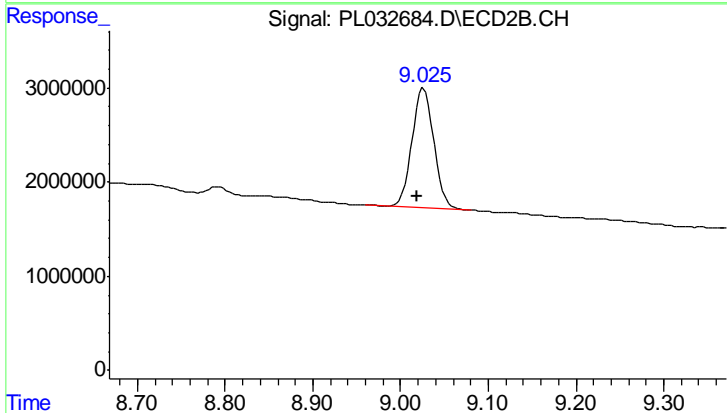
Instrument :
 ECD_L
 ClientSampleId :
 SB-46-9.5-10.0



#27 Chlordane-5
 R.T.: 0.000 min
 Exp R.T.: 6.948 min
 Response: 0
 Conc: N.D.



#28 Decachlorobiphenyl
 R.T.: 8.114 min
 Delta R.T.: 0.005 min
 Response: 105013090
 Conc: 9.03 ng/ml



#28 Decachlorobiphenyl
 R.T.: 9.026 min
 Delta R.T.: 0.007 min
 Response: 21991717
 Conc: 11.56 ng/ml