

Data Path : P:\HPCHEM1\ECD L\Data\PL012918\  
 Data File : PL032636.D  
 Signal(s) : Signal #1: ECD1A.CH Signal #2: ECD2B.CH  
 Acq On : 29 Jan 2018 16:43  
 Operator : UA\AJ  
 Sample : J1338-01  
 Misc :  
 ALS Vial : 27 Sample Multiplier: 1

Instrument :  
 ECD\_L  
 ClientSampleId :  
 OILY-STONES

Integration File signal 1: autoint1.e  
 Integration File signal 2: autoint2.e  
 Quant Time: Jan 30 08:26:14 2018  
 Quant Method : P:\HPCHEM1\ECD\_L\methods\PL012618.M  
 Quant Title : GC Extractables  
 QLast Update : Sat Jan 27 04:03:48 2018  
 Response via : Initial Calibration  
 Integrator: ChemStation 6890 Scale Mode: Large solvent peaks clipped

Volume Inj. : 2 µl  
 Signal #1 Phase : ZB-MR1 Signal #2 Phase: ZB-MR2  
 Signal #1 Info : 30M x 0.32mm x0.5 Signal #2 Info : 30M x 0.32mm x0.25µm

Compound	RT#1	RT#2	Resp#1	Resp#2	ng/ml	ng/ml
-----						
System Monitoring Compounds						
1) SA Tetrachlo...	3.408	3.993	177.9E6	26483091	19.895	21.147
28) SA Decachlor...	8.112	9.026	170.0E6	32365609	14.611	17.016

Target Compounds

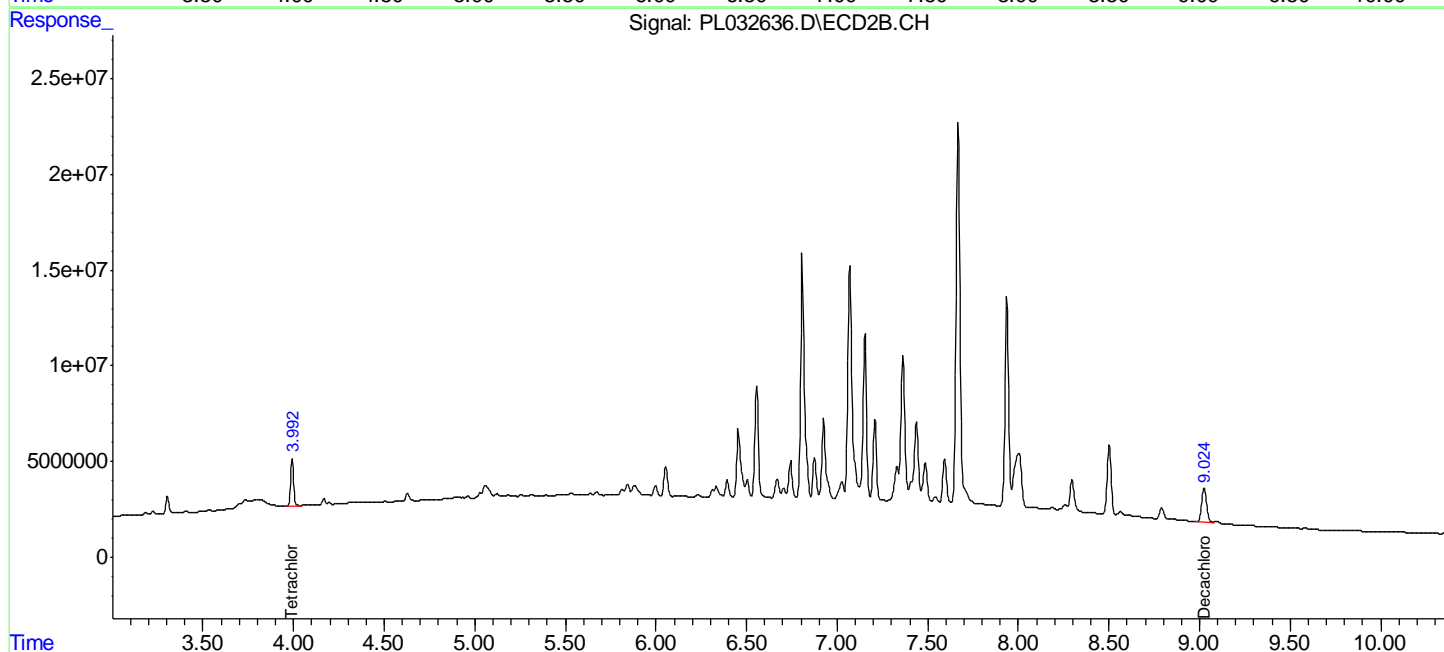
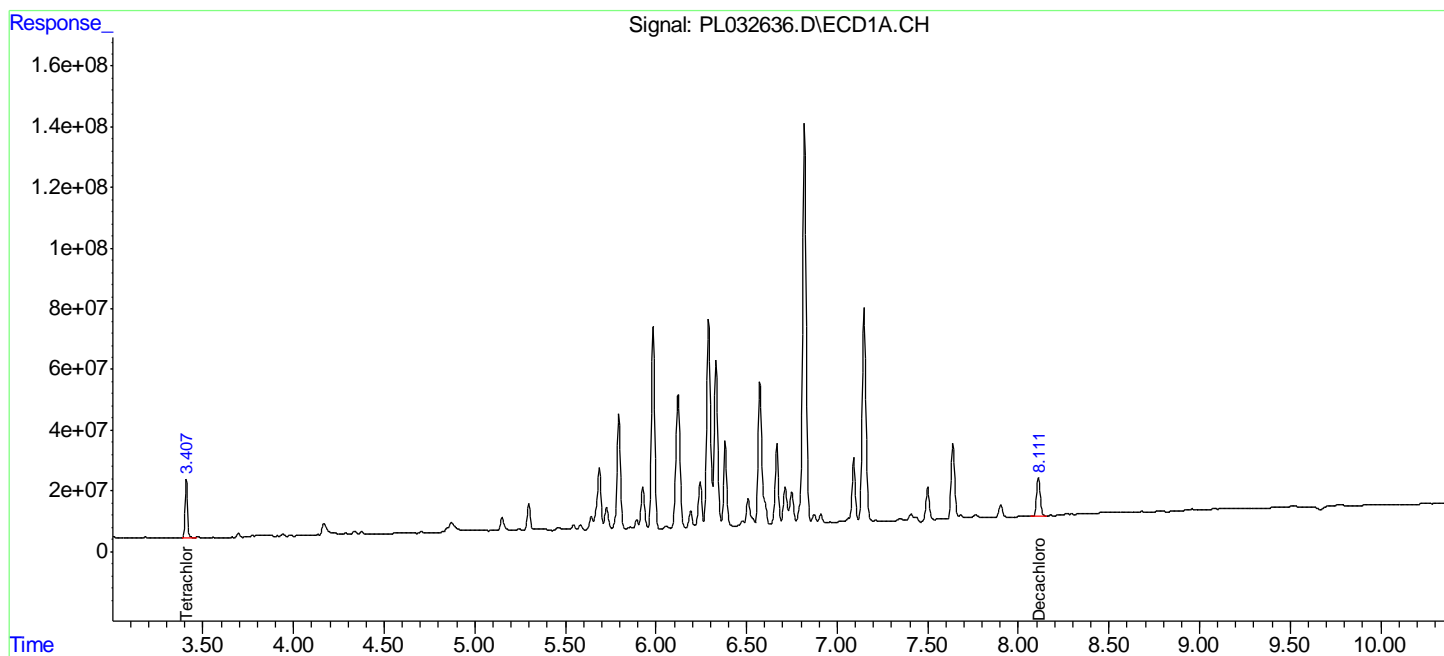
(f)=RT Delta > 1/2 Window (#)=Amounts differ by > 25% (m)=manual int.

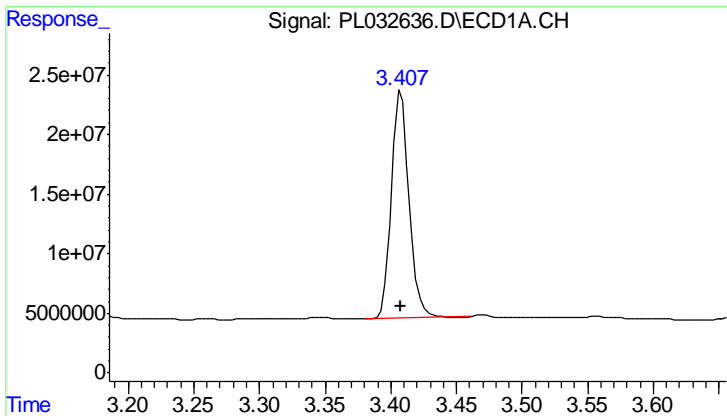
Data Path : P:\HPCHEM1\ECD L\Data\PL012918\  
 Data File : PL032636.D  
 Signal(s) : Signal #1: ECD1A.CH Signal #2: ECD2B.CH  
 Acq On : 29 Jan 2018 16:43  
 Operator : UA\AJ  
 Sample : J1338-01  
 Misc :  
 ALS Vial : 27 Sample Multiplier: 1

Instrument :  
 ECD\_L  
 ClientSampleId :  
 OILY-STONES

Integration File signal 1: autoint1.e  
 Integration File signal 2: autoint2.e  
 Quant Time: Jan 30 08:26:14 2018  
 Quant Method : P:\HPCHEM1\ECD\_L\methods\PL012618.M  
 Quant Title : GC Extractables  
 QLast Update : Sat Jan 27 04:03:48 2018  
 Response via : Initial Calibration  
 Integrator: ChemStation 6890 Scale Mode: Large solvent peaks clipped

Volume Inj. : 2 ul  
 Signal #1 Phase : ZB-MR1 Signal #2 Phase: ZB-MR2  
 Signal #1 Info : 30M x 0.32mm x0.5 Signal #2 Info : 30M x 0.32mm x0.25µm

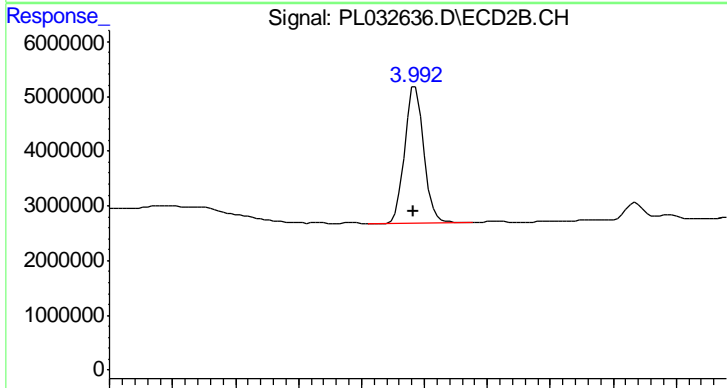




#1 Tetrachloro-m-xylene

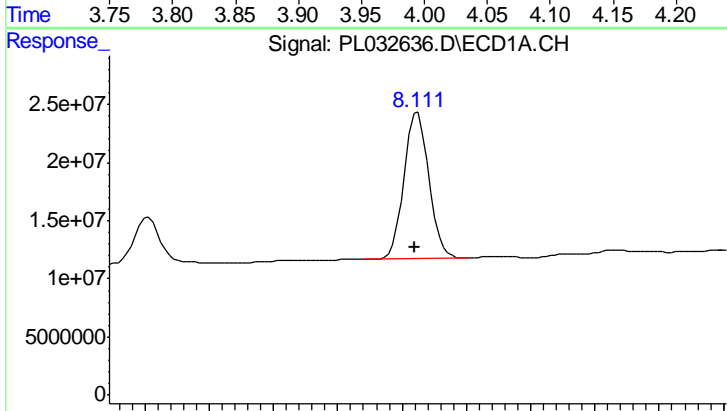
R.T.: 3.408 min  
 Delta R.T.: 0.000 min  
 Response: 177864112  
 Conc: 19.89 ng/ml

Instrument :  
 ECD\_L  
 ClientSampleId :  
 OILY-STONES



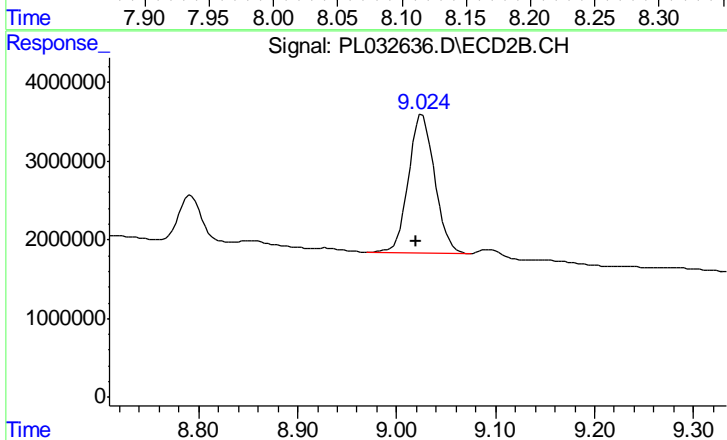
#1 Tetrachloro-m-xylene

R.T.: 3.993 min  
 Delta R.T.: 0.002 min  
 Response: 26483091  
 Conc: 21.15 ng/ml



#28 Decachlorobiphenyl

R.T.: 8.112 min  
 Delta R.T.: 0.002 min  
 Response: 170008691  
 Conc: 14.61 ng/ml



#28 Decachlorobiphenyl

R.T.: 9.026 min  
 Delta R.T.: 0.007 min  
 Response: 32365609  
 Conc: 17.02 ng/ml