

Data Path : Z:\pestpcbsrv\HPCHEM1\ECD_L\Data\PL012920\
 Data File : PL056177.D
 Signal(s) : Signal #1: ECD1A.ch Signal #2: ECD2B.ch
 Acq On : 29 Jan 2020 13:49
 Operator : AJ\MA
 Sample : PEM
 Misc :
 ALS Vial : 3 Sample Multiplier: 1

Instrument :
 ECD_L
ClientSampled :
 PEM

Manual Integrations
APPROVED
 mohammad
 1/30/2020 11:32:16 AM

Integration File signal 1: autoint1.e
 Integration File signal 2: autoint2.e
 Quant Time: Jan 29 15:22:25 2020
 Quant Method : Z:\pestpcbsrv\HPCHEM1\ECD_L\methods\PL012820.M
 Quant Title : GC Extractables
 QLast Update : Tue Jan 28 13:10:37 2020
 Response via : Initial Calibration
 Integrator: ChemStation

Volume Inj. : 1 µl
 Signal #1 Phase : ZB-MR2 Signal #2 Phase: ZB-MR1
 Signal #1 Info : 30M x 0.32mm x0.2 Signal #2 Info : 30M x 0.32mm x0.5µm

Compound	RT#1	RT#2	Resp#1	Resp#2	ng/ml	ng/ml

System Monitoring Compounds						
1) SA Tetrachlo...	3.497	4.015	221.7E6	63120373	21.165	21.586
28) SA Decachlor...	8.252	9.092	201.9E6	48390067	19.176	21.393
Target Compounds						
2) A alpha-BHC	3.936	4.404	175.6E6	43192499	9.852	9.868
3) MA gamma-BHC...	4.220	4.689	154.9E6	40121913	9.461	9.784
6) B beta-BHC	4.470	4.860	67507222	17742786	10.249	10.822
12) B 4,4'-DDE	5.666	6.353	1837616	671612	0.127m	0.224m#
14) MA Endrin	6.054	6.722	652.1E6	126.7E6	46.410	48.330
16) A 4,4'-DDD	6.178	6.845	24382124	5516558	2.268	2.338m
17) MA 4,4'-DDT	6.418	7.145	1077.9E6	221.5E6	98.627	96.504
18) B Endrin al...	6.493	7.056	4821283	610511	0.441m	0.269m#
20) A Methoxychlor	6.963	7.605	1253.9E6	276.7E6	236.041	225.681
21) B Endrin ke...	7.198	7.750	20463256	3485532	1.564	1.307m

(f)=RT Delta > 1/2 Window (#)=Amounts differ by > 25% (m)=manual int.

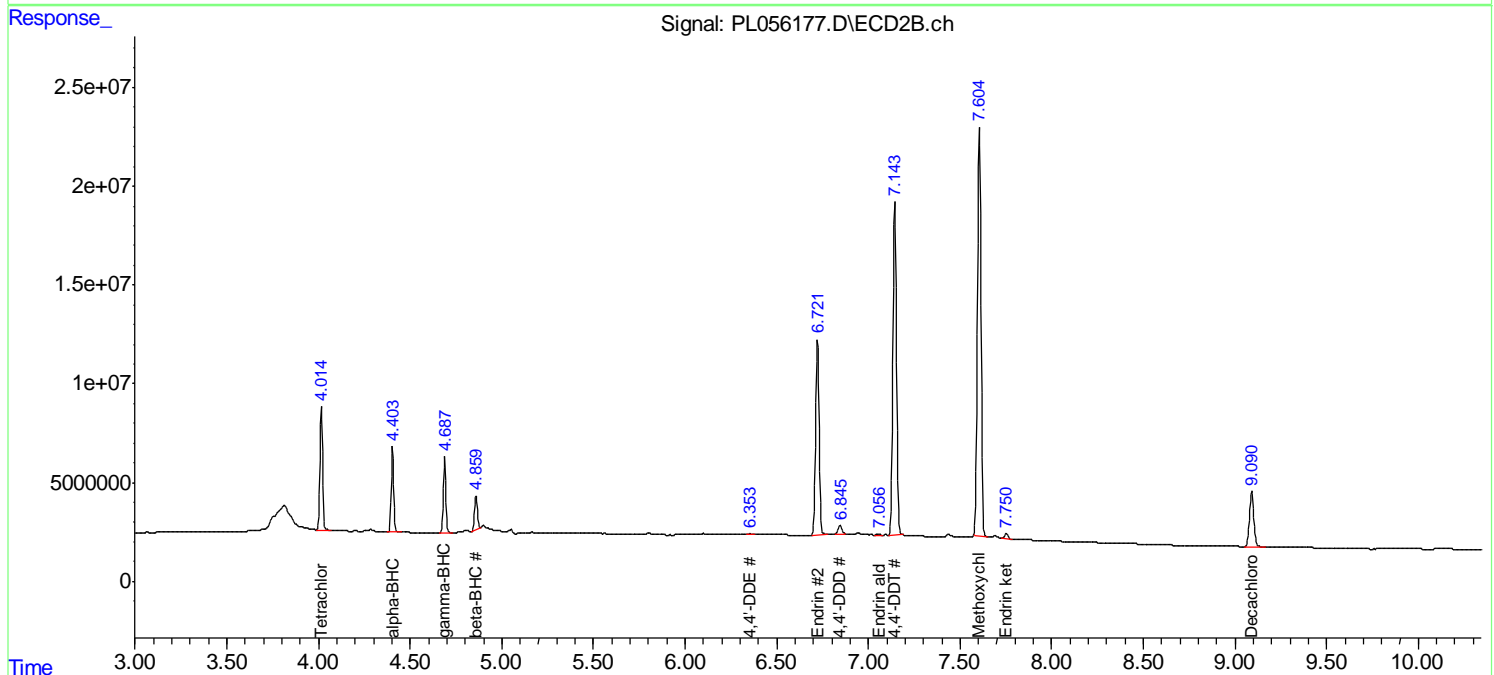
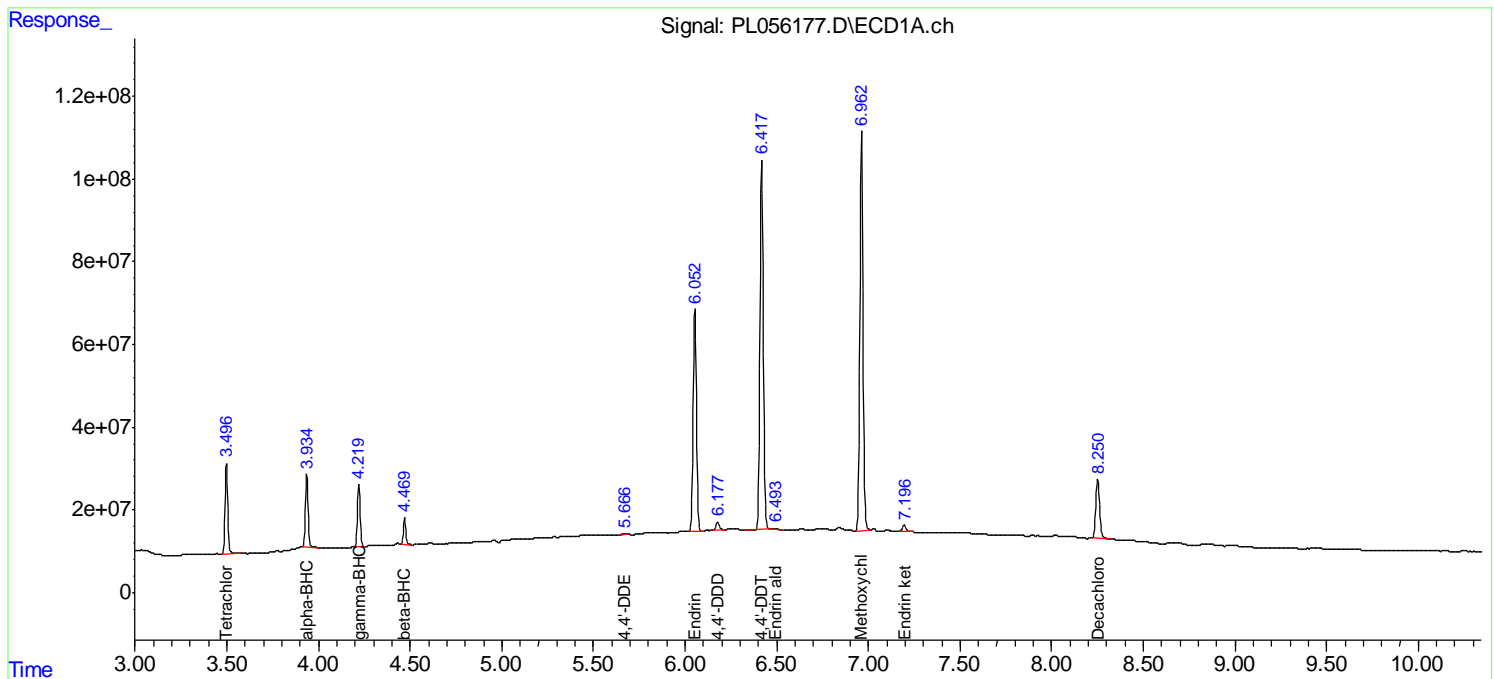
Data Path : Z:\pestpcbsrv\HPCHEM1\ECD_L\Data\PL012920\
 Data File : PL056177.D
 Signal(s) : Signal #1: ECD1A.ch Signal #2: ECD2B.ch
 Acq On : 29 Jan 2020 13:49
 Operator : AJ\MA
 Sample : PEM
 Misc :
 ALS Vial : 3 Sample Multiplier: 1

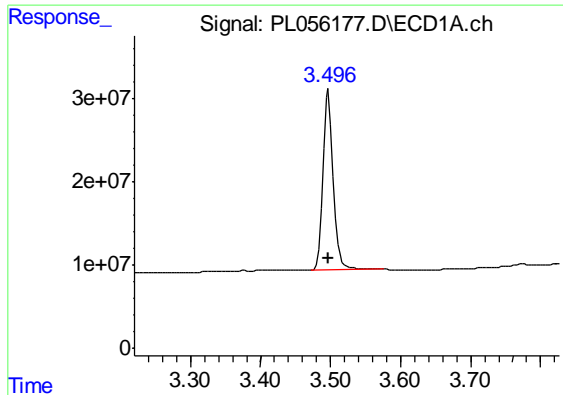
Instrument :
 ECD_L
 ClientSampled :
 PEM

Manual Integrations
APPROVED
 mohammad
 1/30/2020 11:32:16 AM

Integration File signal 1: autoint1.e
 Integration File signal 2: autoint2.e
 Quant Time: Jan 29 15:22:25 2020
 Quant Method : Z:\pestpcbsrv\HPCHEM1\ECD_L\methods\PL012820.M
 Quant Title : GC Extractables
 QLast Update : Tue Jan 28 13:10:37 2020
 Response via : Initial Calibration
 Integrator: ChemStation

Volume Inj. : 1 µl
 Signal #1 Phase : ZB-MR2 Signal #2 Phase: ZB-MR1
 Signal #1 Info : 30M x 0.32mm x0.2 Signal #2 Info : 30M x 0.32mm x0.5µm





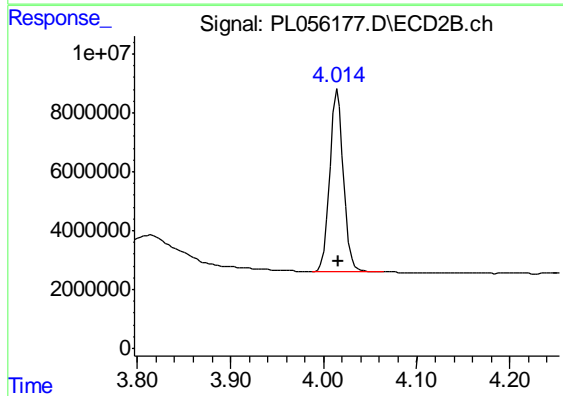
#1 Tetrachloro-m-xylene

R.T.: 3.497 min
 Delta R.T.: 0.000 min
 Response: 221664517
 Conc: 21.17 ng/ml

Instrument :
 ECD_L
 ClientSampled :
 PEM

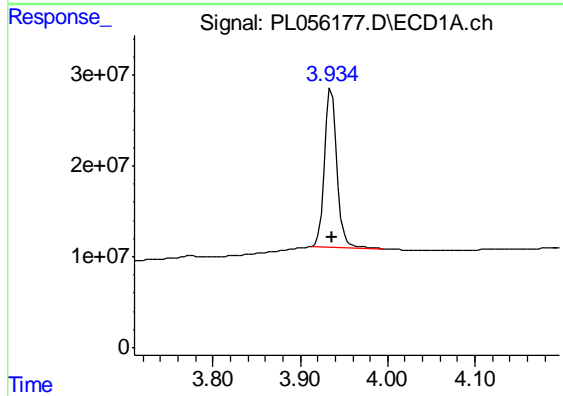
Manual Integrations
 APPROVED

mohammad
 1/30/2020 11:32:16 AM



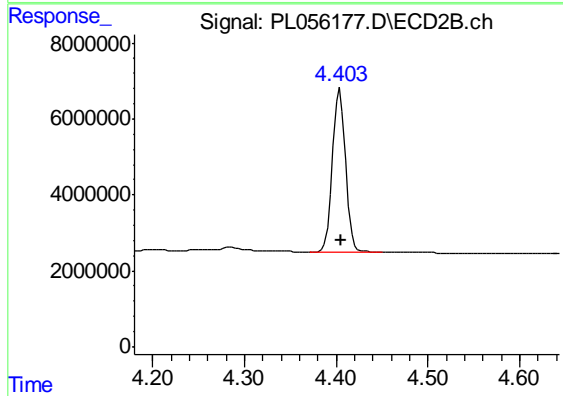
#1 Tetrachloro-m-xylene

R.T.: 4.015 min
 Delta R.T.: -0.001 min
 Response: 63120373
 Conc: 21.59 ng/ml



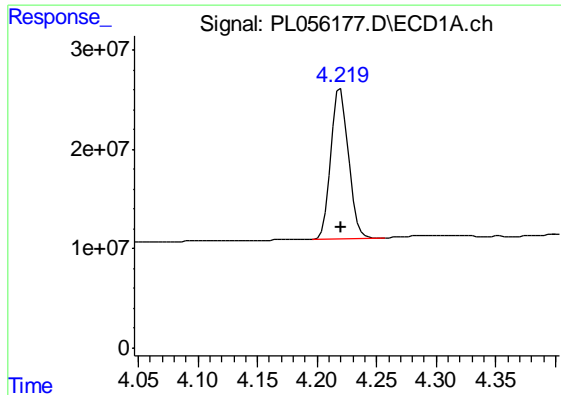
#2 alpha-BHC

R.T.: 3.936 min
 Delta R.T.: 0.000 min
 Response: 175561026
 Conc: 9.85 ng/ml



#2 alpha-BHC

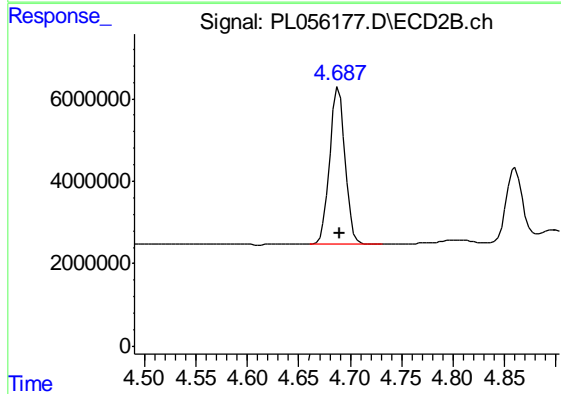
R.T.: 4.404 min
 Delta R.T.: 0.000 min
 Response: 43192499
 Conc: 9.87 ng/ml



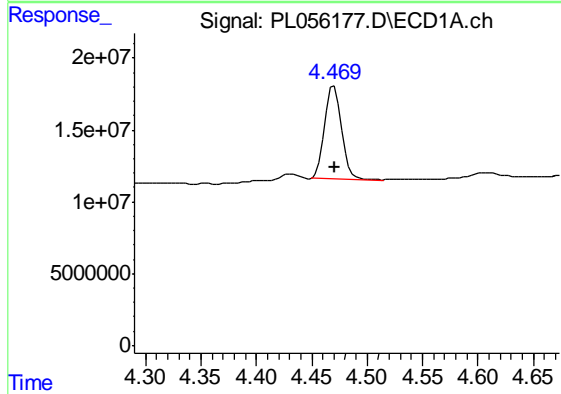
#3 gamma-BHC (Lindane)
 R.T.: 4.220 min
 Delta R.T.: 0.000 min
 Response: 154919464
 Conc: 9.46 ng/ml

Instrument :
 ECD_L
 ClientSampled :
 PEM

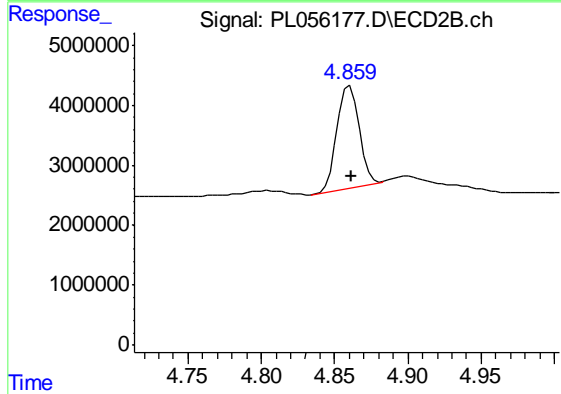
Manual Integrations
 APPROVED
 mohammad
 1/30/2020 11:32:16 AM



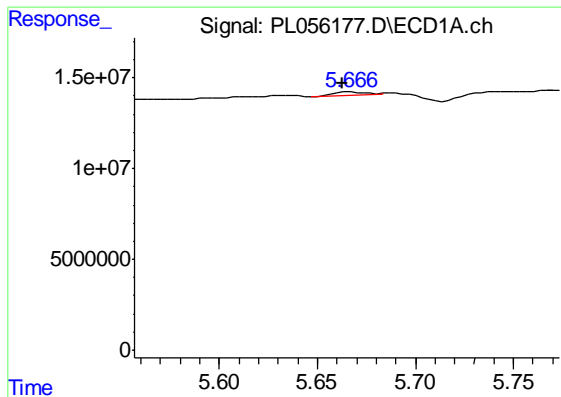
#3 gamma-BHC (Lindane)
 R.T.: 4.689 min
 Delta R.T.: 0.000 min
 Response: 40121913
 Conc: 9.78 ng/ml



#6 beta-BHC
 R.T.: 4.470 min
 Delta R.T.: 0.000 min
 Response: 67507222
 Conc: 10.25 ng/ml



#6 beta-BHC
 R.T.: 4.860 min
 Delta R.T.: -0.001 min
 Response: 17742786
 Conc: 10.82 ng/ml



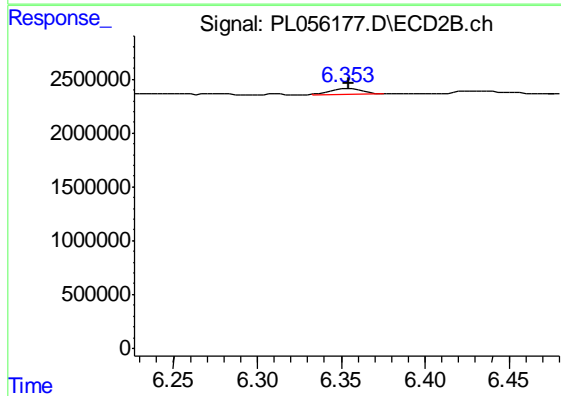
#12 4,4'-DDE

R.T.: 5.666 min
 Delta R.T.: 0.004 min
 Response: 1837616
 Conc: 0.13 ng/ml m

Instrument :
 ECD_L
 ClientSampled :
 PEM

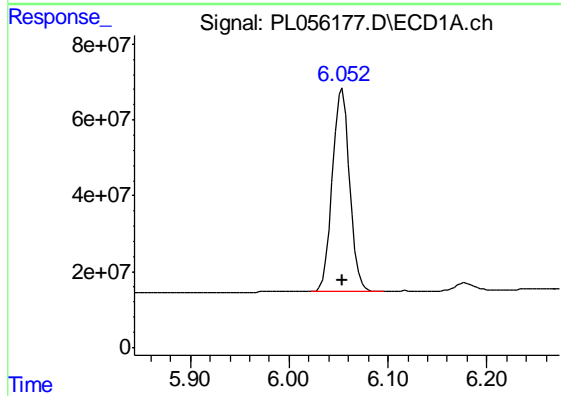
Manual Integrations
 APPROVED

mohammad
 1/30/2020 11:32:16 AM



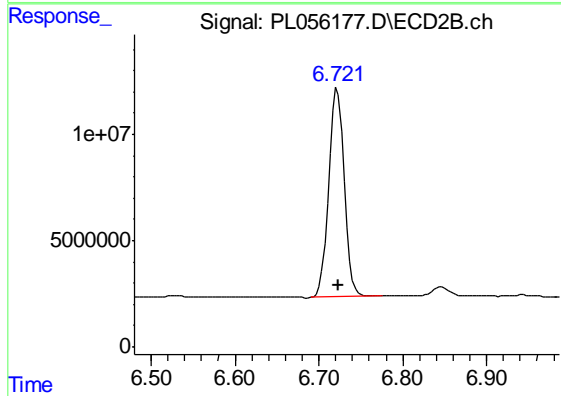
#12 4,4'-DDE

R.T.: 6.353 min
 Delta R.T.: -0.002 min
 Response: 671612
 Conc: 0.22 ng/ml m



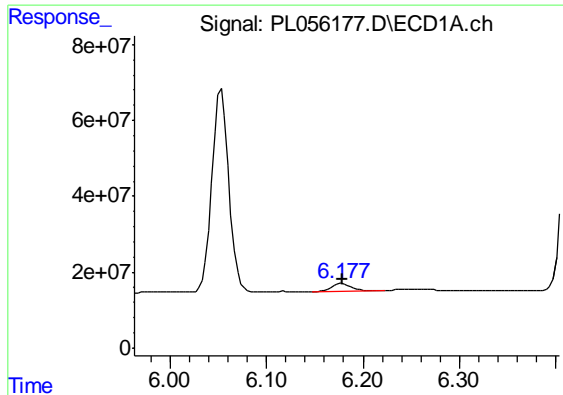
#14 Endrin

R.T.: 6.054 min
 Delta R.T.: 0.000 min
 Response: 652141384
 Conc: 46.41 ng/ml



#14 Endrin

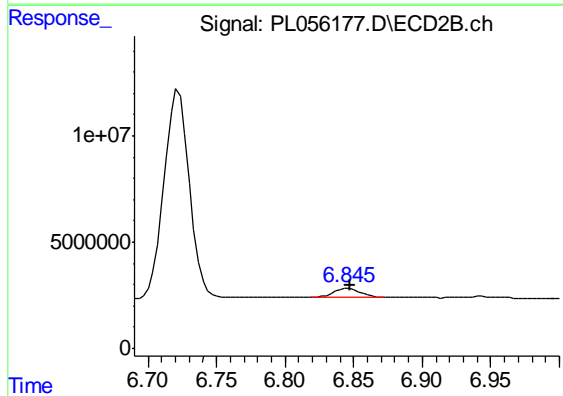
R.T.: 6.722 min
 Delta R.T.: 0.000 min
 Response: 126658503
 Conc: 48.33 ng/ml



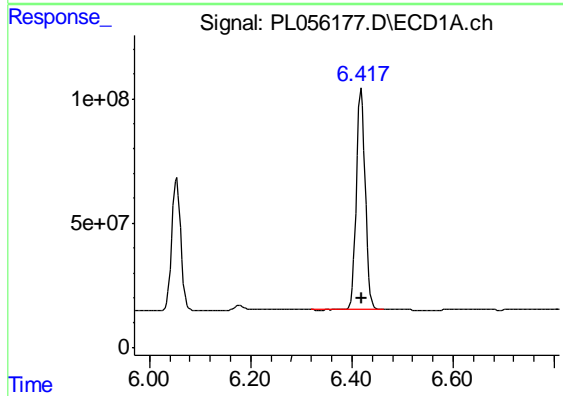
#16 4,4'-DDD
 R.T.: 6.178 min
 Delta R.T.: 0.000 min
 Response: 24382124
 Conc: 2.27 ng/ml

Instrument :
 ECD_L
ClientSampled :
 PEM

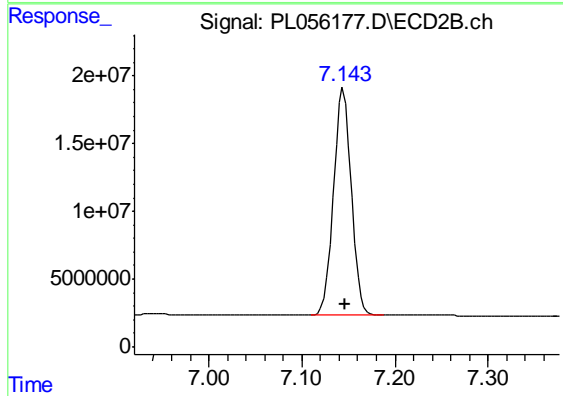
Manual Integrations
APPROVED
 mohammad
 1/30/2020 11:32:16 AM



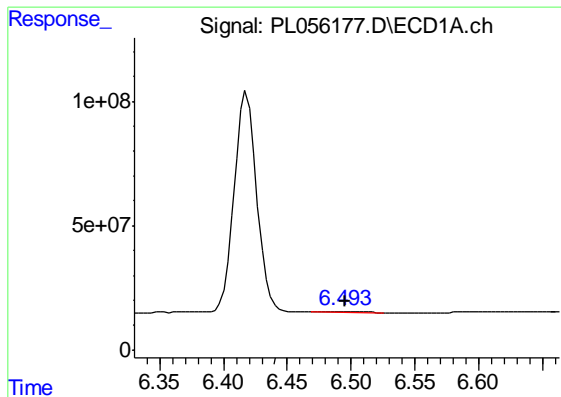
#16 4,4'-DDD
 R.T.: 6.845 min
 Delta R.T.: -0.002 min
 Response: 5516558
 Conc: 2.34 ng/ml m



#17 4,4'-DDT
 R.T.: 6.418 min
 Delta R.T.: 0.000 min
 Response: 1077875422
 Conc: 98.63 ng/ml



#17 4,4'-DDT
 R.T.: 7.145 min
 Delta R.T.: -0.001 min
 Response: 221549473
 Conc: 96.50 ng/ml



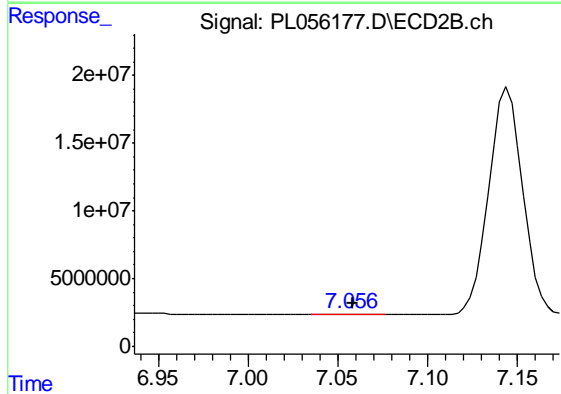
#18 Endrin aldehyde

R.T.: 6.493 min
 Delta R.T.: -0.002 min
 Response: 4821283
 Conc: 0.44 ng/ml m

Instrument :
 ECD_L
 ClientSampled :
 PEM

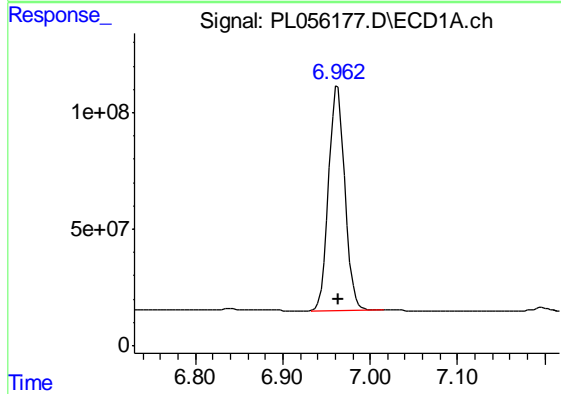
Manual Integrations
 APPROVED

mohammad
 1/30/2020 11:32:16 AM



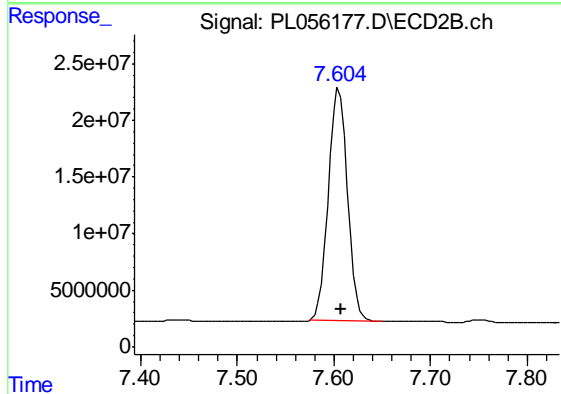
#18 Endrin aldehyde

R.T.: 7.056 min
 Delta R.T.: -0.003 min
 Response: 610511
 Conc: 0.27 ng/ml m



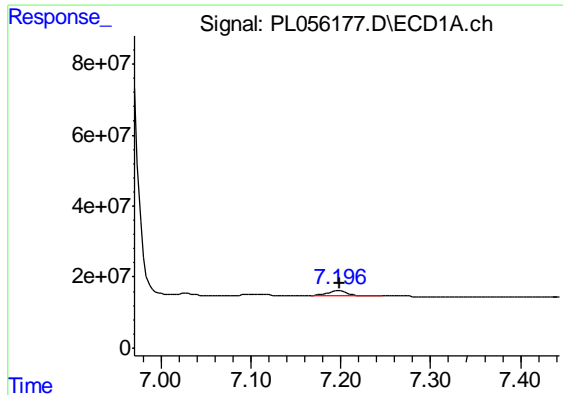
#20 Methoxychlor

R.T.: 6.963 min
 Delta R.T.: 0.000 min
 Response: 1253902766
 Conc: 236.04 ng/ml



#20 Methoxychlor

R.T.: 7.605 min
 Delta R.T.: -0.002 min
 Response: 276705960
 Conc: 225.68 ng/ml



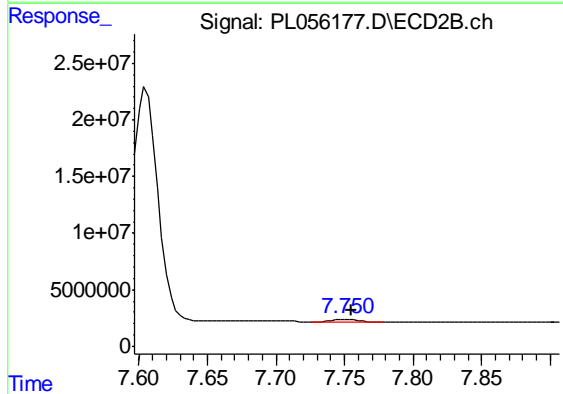
#21 Endrin ketone

R.T.: 7.198 min
 Delta R.T.: -0.002 min
 Response: 20463256
 Conc: 1.56 ng/ml

Instrument :
 ECD_L
 ClientSampled :
 PEM

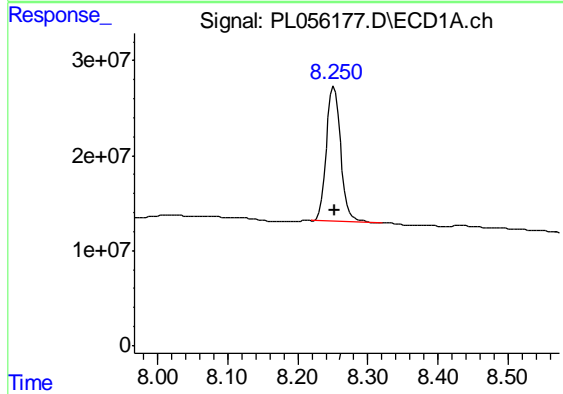
Manual Integrations
 APPROVED

mohammad
 1/30/2020 11:32:16 AM



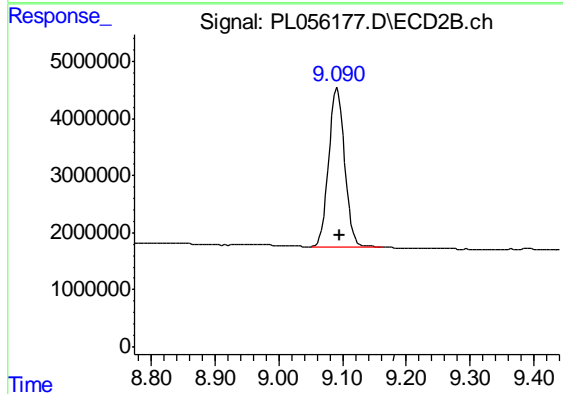
#21 Endrin ketone

R.T.: 7.750 min
 Delta R.T.: -0.004 min
 Response: 3485532
 Conc: 1.31 ng/ml m



#28 Decachlorobiphenyl

R.T.: 8.252 min
 Delta R.T.: 0.000 min
 Response: 201885826
 Conc: 19.18 ng/ml



#28 Decachlorobiphenyl

R.T.: 9.092 min
 Delta R.T.: -0.004 min
 Response: 48390067
 Conc: 21.39 ng/ml