

Data Path : Z:\pestpcbsrv\HPCHEM1\ECD_L\Data\PL012925\
 Data File : PL093866.D
 Signal(s) : Signal #1: ECD1A.ch Signal #2: ECD2B.ch
 Acq On : 29 Jan 2025 19:37
 Operator : AR\AJ
 Sample : Q1206-08
 Misc :
 ALS Vial : 20 Sample Multiplier: 1

Instrument :
 ECD_L
 ClientSampleId :
 JPP-16.3-012725

Integration File signal 1: autoint1.e
 Integration File signal 2: autoint2.e
 Quant Time: Jan 30 00:31:16 2025
 Quant Method : Z:\pestpcbsrv\HPCHEM1\ECD_L\methods\PL012125.M
 Quant Title : GC Extractables
 QLast Update : Tue Jan 21 14:58:05 2025
 Response via : Initial Calibration
 Integrator: ChemStation

Volume Inj. : 1 µl
 Signal #1 Phase : ZB-MR1 Signal #2 Phase: ZB-MR2
 Signal #1 Info : 30M x 0.32mm x0.5 Signal #2 Info : 30M x 0.32mm x0.25µm

Compound	RT#1	RT#2	Resp#1	Resp#2	ng/ml	ng/ml

System Monitoring Compounds						
1) SA Tetrachlo...	3.538	2.795f	55404407	63533374	20.575	19.464
2) SA Decachlor...	9.058	7.933f	55471583	88460799	26.517	25.245
Target Compounds						
3) MA gamma-BHC...	0.000	3.619	0	29451	N.D.	0.006 #
4) MA Heptachlor	0.000	3.930f	0	149322	N.D.	0.032 #
5) MB Aldrin	0.000	4.223	0	44841	N.D.	0.010 #
6) B beta-BHC	0.000	3.930f	0	149322	N.D.	0.075 #
7) B delta-BHC	4.763	4.153f	11583333	403255	3.305	0.085 #
8) B Heptachlo...	0.000	4.720	0	139908	N.D.	0.033 #
9) A Endosulfan I	0.000	5.068f	0	2097292	N.D.	0.541 #
10) B gamma-Chl...	0.000	4.959f	0	1264425	N.D.	0.298 #
11) B alpha-Chl...	0.000	5.046	0	791666	N.D.	0.189 #
13) MA Dieldrin	0.000	5.345f	0	105619	N.D.	0.025 #
16) A 4,4'-DDD	0.000	5.810f	0	1576564	N.D.	0.499 #
17) MA 4,4'-DDT	0.000	6.040	0	166936	N.D.	0.051 #
20) A Methoxychlor	0.000	6.609	0	62848	N.D.	0.035 #
24) Chlordane-2	0.000	4.356	0	501004	N.D.	3.415 #
25) Chlordane-3	0.000	4.959f	0	1264425	N.D.	2.908 #
26) Chlordane-4	0.000	5.046	0	791666	N.D.	1.869 #

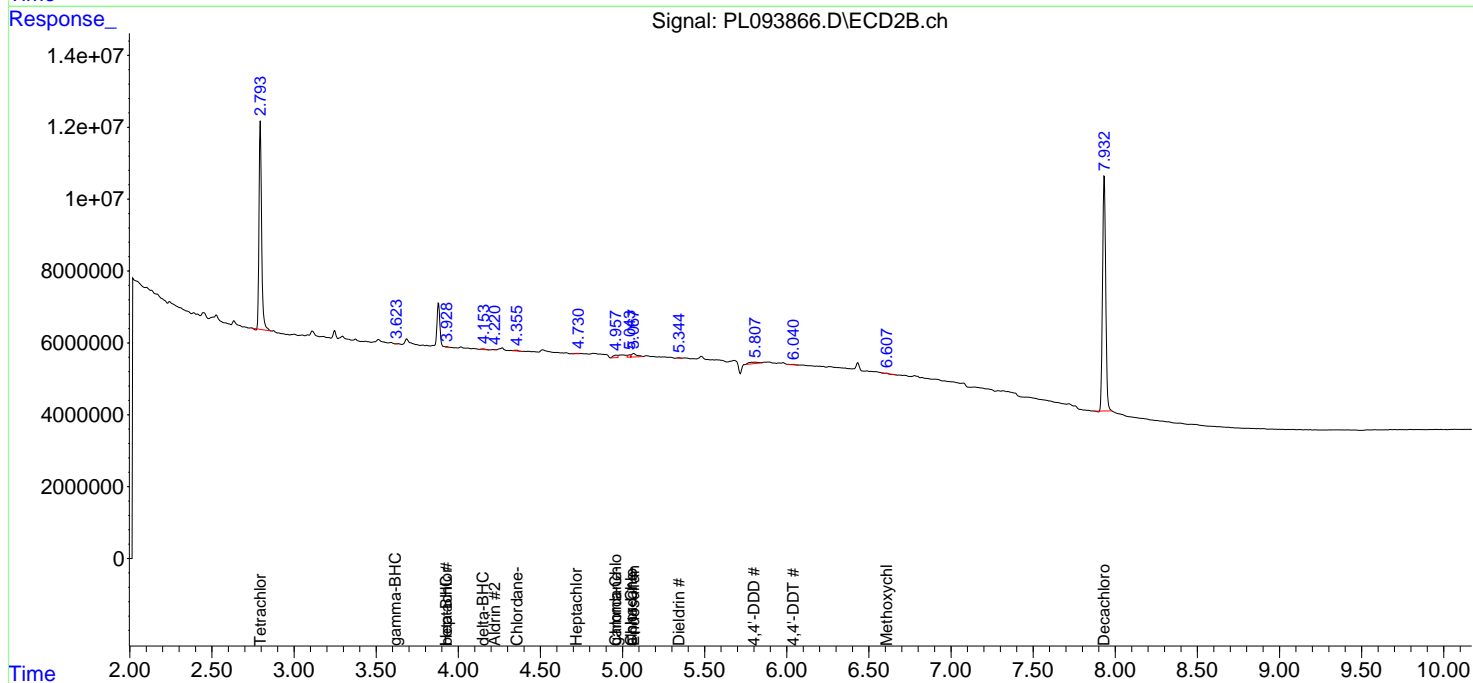
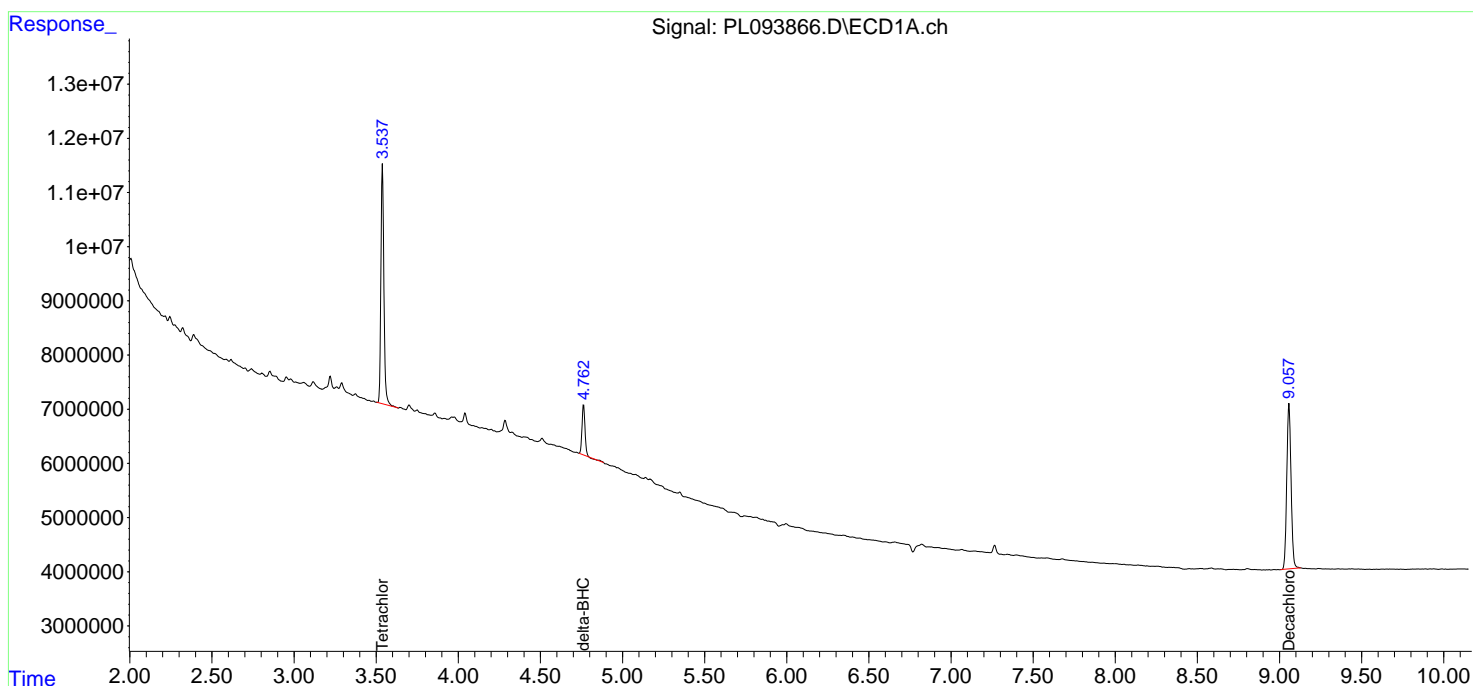
(f)=RT Delta > 1/2 Window (#)=Amounts differ by > 25% (m)=manual int.

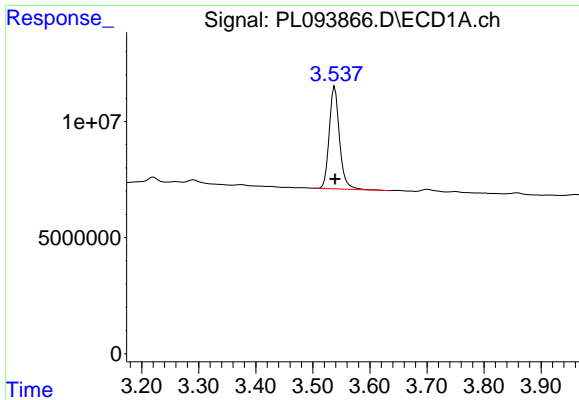
Data Path : Z:\pestpcbsrv\HPCHEM1\ECD_L\Data\PL012925\
 Data File : PL093866.D
 Signal(s) : Signal #1: ECD1A.ch Signal #2: ECD2B.ch
 Acq On : 29 Jan 2025 19:37
 Operator : AR\AJ
 Sample : Q1206-08
 Misc :
 ALS Vial : 20 Sample Multiplier: 1

Instrument :
 ECD_L
 ClientSampleId :
 JPP-16.3-012725

Integration File signal 1: autoint1.e
 Integration File signal 2: autoint2.e
 Quant Time: Jan 30 00:31:16 2025
 Quant Method : Z:\pestpcbsrv\HPCHEM1\ECD_L\methods\PL012125.M
 Quant Title : GC Extractables
 QLast Update : Tue Jan 21 14:58:05 2025
 Response via : Initial Calibration
 Integrator: ChemStation

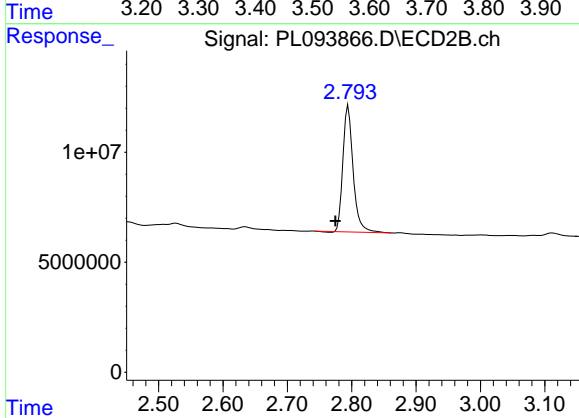
Volume Inj. : 1 µl
 Signal #1 Phase : ZB-MR1 Signal #2 Phase: ZB-MR2
 Signal #1 Info : 30M x 0.32mm x0.5 Signal #2 Info : 30M x 0.32mm x0.25µm



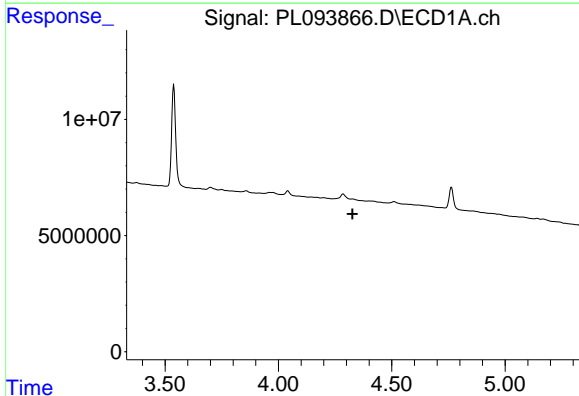


#1 Tetrachloro-m-xylene
 R.T.: 3.538 min
 Delta R.T.: 0.000 min
 Response: 55404407
 Conc: 20.58 ng/ml

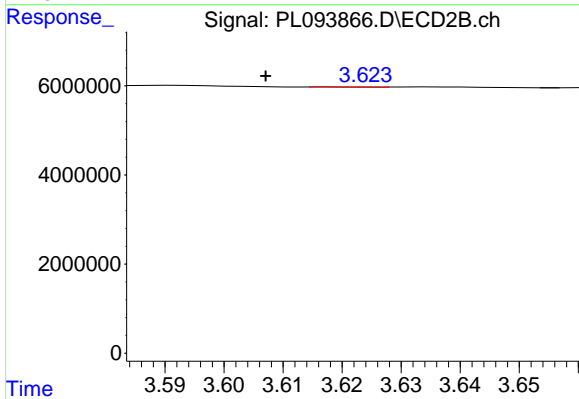
Instrument :
 ECD_L
 ClientSampleId :
 JPP-16.3-012725



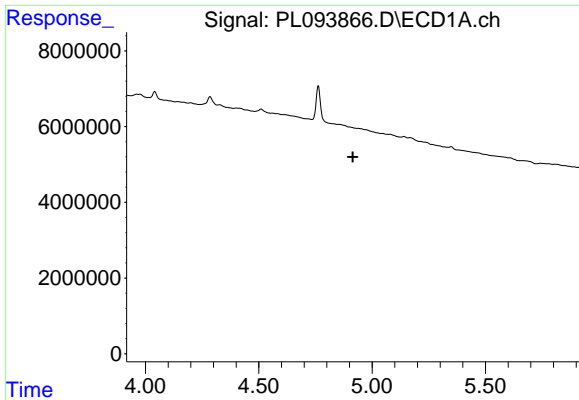
#1 Tetrachloro-m-xylene
 R.T.: 2.795 min
 Delta R.T.: 0.020 min
 Response: 63533374
 Conc: 19.46 ng/ml



#3 gamma-BHC (Lindane)
 R.T.: 0.000 min
 Exp R.T. : 4.327 min
 Response: 0
 Conc: N.D.



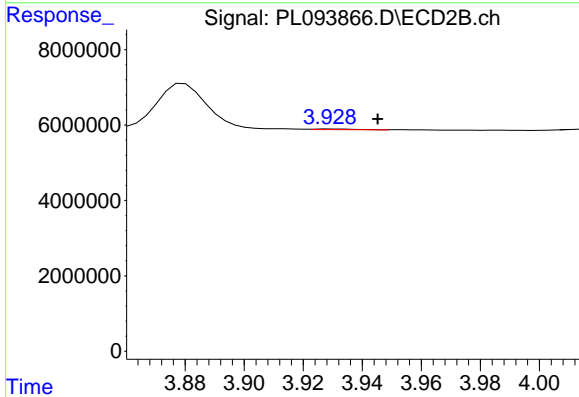
#3 gamma-BHC (Lindane)
 R.T.: 3.619 min
 Delta R.T.: 0.012 min
 Response: 29451
 Conc: 0.01 ng/ml



#4 Heptachlor

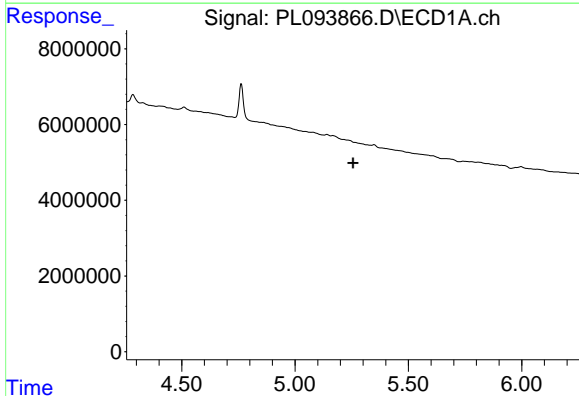
R.T.: 0.000 min
 Exp R.T. : 4.914 min
 Response: 0
 Conc: N.D.

Instrument :
 ECD_L
 ClientSampleId :
 JPP-16.3-012725



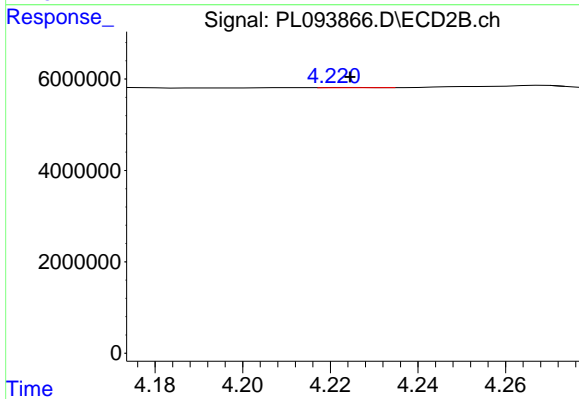
#4 Heptachlor

R.T.: 3.930 min
 Delta R.T.: -0.016 min
 Response: 149322
 Conc: 0.03 ng/ml



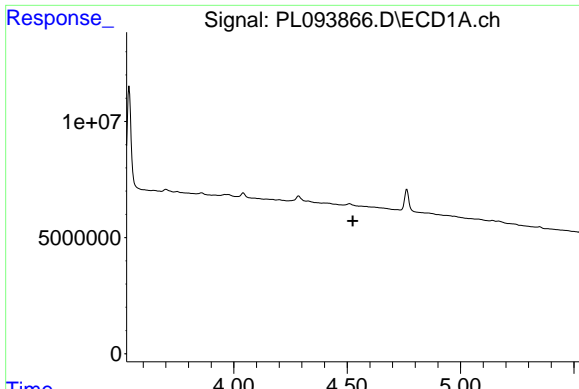
#5 Aldrin

R.T.: 0.000 min
 Exp R.T. : 5.256 min
 Response: 0
 Conc: N.D.



#5 Aldrin

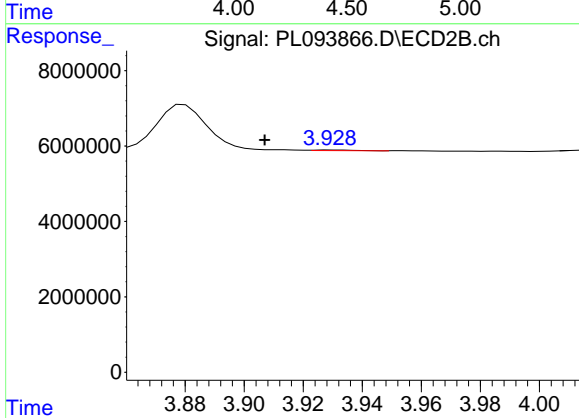
R.T.: 4.223 min
 Delta R.T.: -0.001 min
 Response: 44841
 Conc: 0.01 ng/ml



#6 beta-BHC

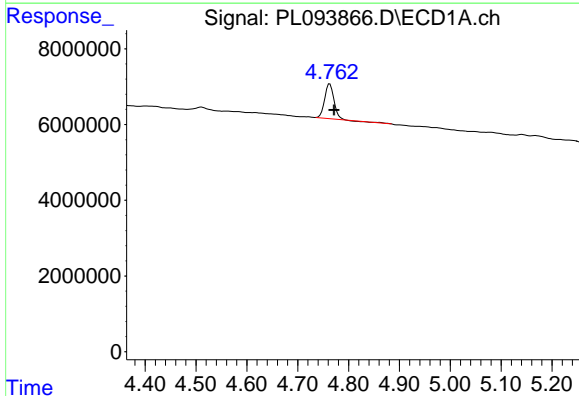
R.T.: 0.000 min
 Exp R.T.: 4.525 min
 Response: 0
 Conc: N.D.

Instrument :
 ECD_L
 ClientSampleId :
 JPP-16.3-012725



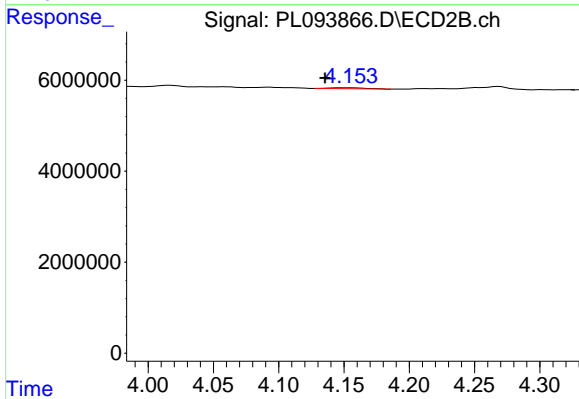
#6 beta-BHC

R.T.: 3.930 min
 Delta R.T.: 0.023 min
 Response: 149322
 Conc: 0.07 ng/ml



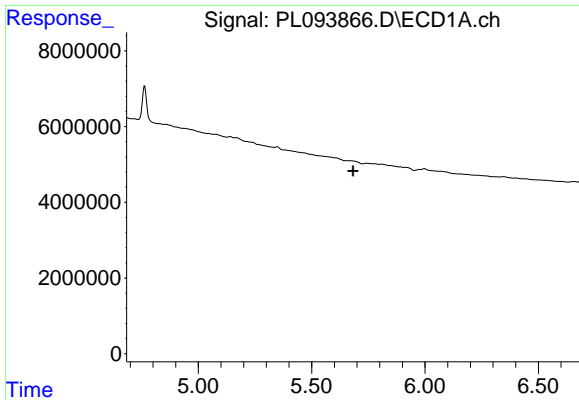
#7 delta-BHC

R.T.: 4.763 min
 Delta R.T.: -0.009 min
 Response: 11583333
 Conc: 3.30 ng/ml



#7 delta-BHC

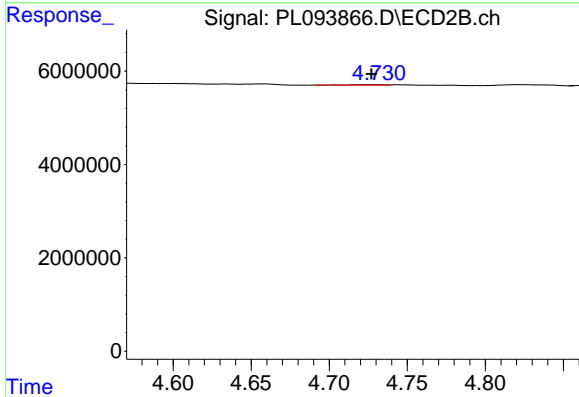
R.T.: 4.153 min
 Delta R.T.: 0.017 min
 Response: 403255
 Conc: 0.08 ng/ml



#8 Heptachlor epoxide

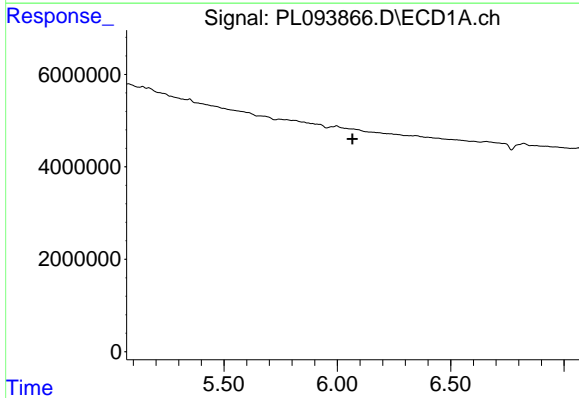
R.T.: 0.000 min
 Exp R.T. : 5.682 min
 Response: 0
 Conc: N.D.

Instrument :
 ECD_L
 ClientSampleId :
 JPP-16.3-012725



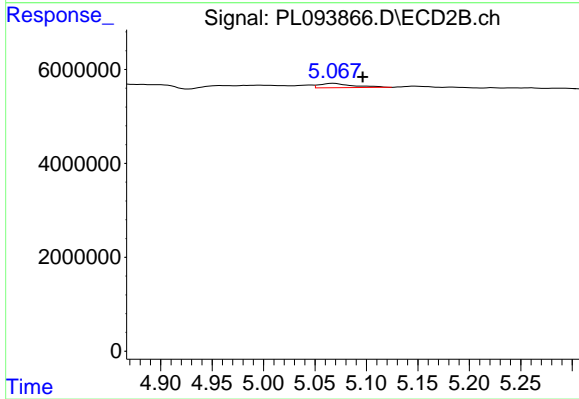
#8 Heptachlor epoxide

R.T.: 4.720 min
 Delta R.T.: -0.007 min
 Response: 139908
 Conc: 0.03 ng/ml



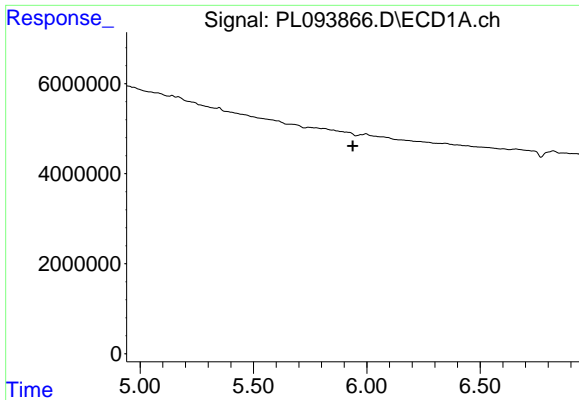
#9 Endosulfan I

R.T.: 0.000 min
 Exp R.T. : 6.067 min
 Response: 0
 Conc: N.D.



#9 Endosulfan I

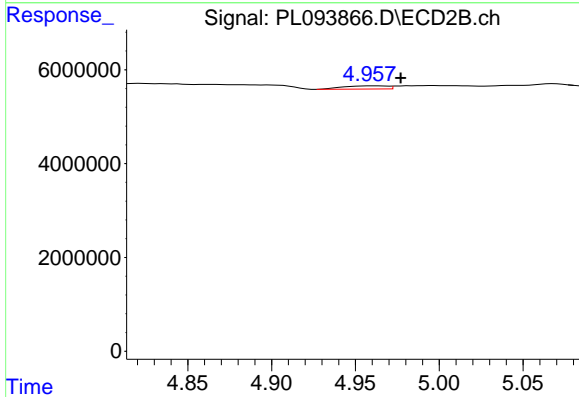
R.T.: 5.068 min
 Delta R.T.: -0.028 min
 Response: 2097292
 Conc: 0.54 ng/ml



#10 gamma-Chlordane

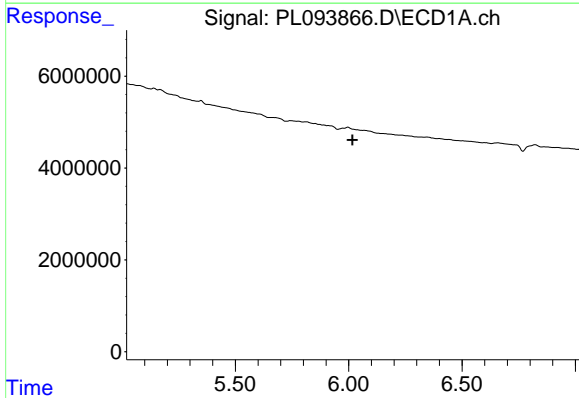
R.T.: 0.000 min
 Exp R.T. : 5.938 min
 Response: 0
 Conc: N.D.

Instrument :
 ECD_L
 ClientSampleId :
 JPP-16.3-012725



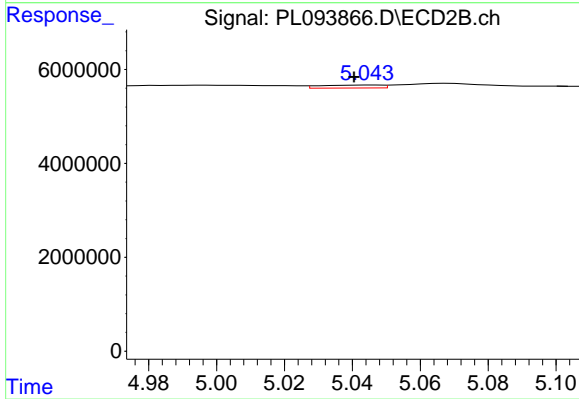
#10 gamma-Chlordane

R.T.: 4.959 min
 Delta R.T.: -0.018 min
 Response: 1264425
 Conc: 0.30 ng/ml



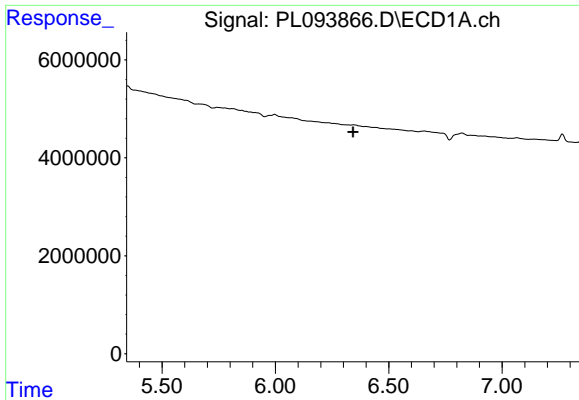
#11 alpha-Chlordane

R.T.: 0.000 min
 Exp R.T. : 6.017 min
 Response: 0
 Conc: N.D.



#11 alpha-Chlordane

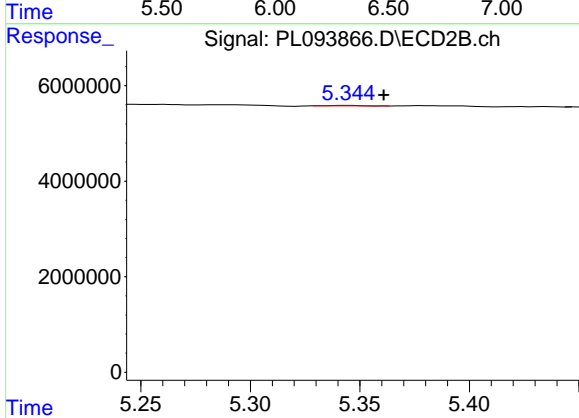
R.T.: 5.046 min
 Delta R.T.: 0.005 min
 Response: 791666
 Conc: 0.19 ng/ml



#13 Dieldrin

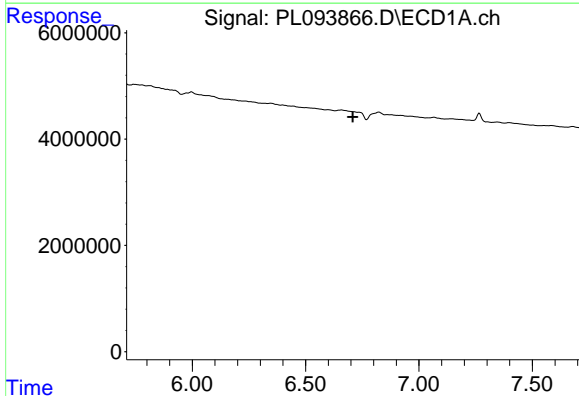
R.T.: 0.000 min
 Exp R.T.: 6.343 min
 Response: 0
 Conc: N.D.

Instrument :
 ECD_L
 ClientSampleId :
 JPP-16.3-012725



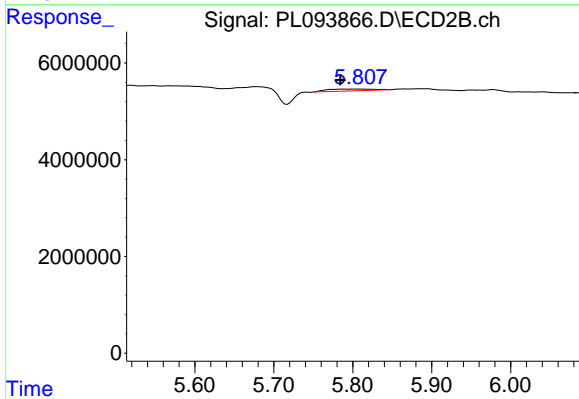
#13 Dieldrin

R.T.: 5.345 min
 Delta R.T.: -0.016 min
 Response: 105619
 Conc: 0.02 ng/ml



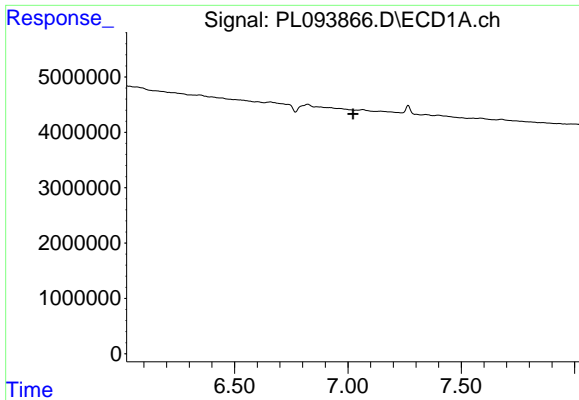
#16 4,4'-DDD

R.T.: 0.000 min
 Exp R.T.: 6.708 min
 Response: 0
 Conc: N.D.



#16 4,4'-DDD

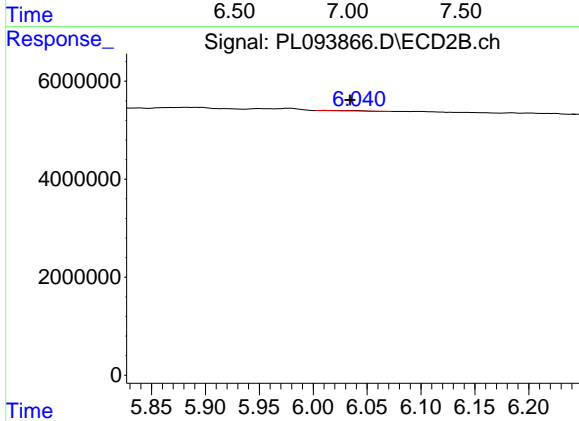
R.T.: 5.810 min
 Delta R.T.: 0.025 min
 Response: 1576564
 Conc: 0.50 ng/ml



#17 4,4'-DDT

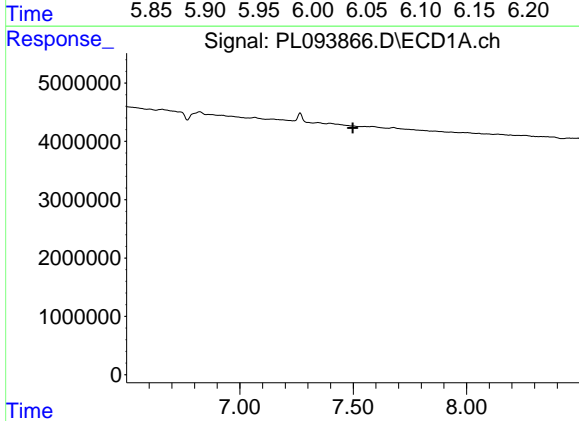
R.T.: 0.000 min
 Exp R.T.: 7.022 min
 Response: 0
 Conc: N.D.

Instrument :
 ECD_L
 ClientSampleId :
 JPP-16.3-012725



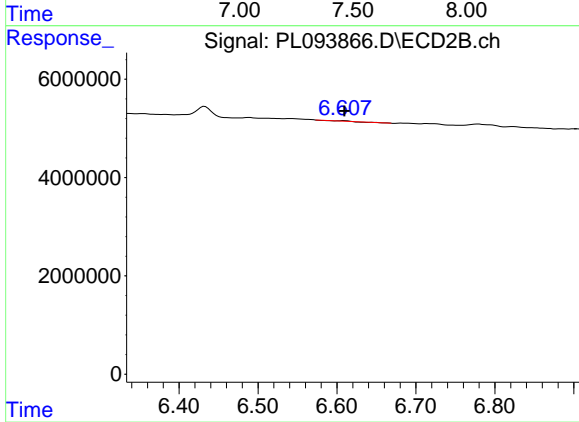
#17 4,4'-DDT

R.T.: 6.040 min
 Delta R.T.: 0.006 min
 Response: 166936
 Conc: 0.05 ng/ml



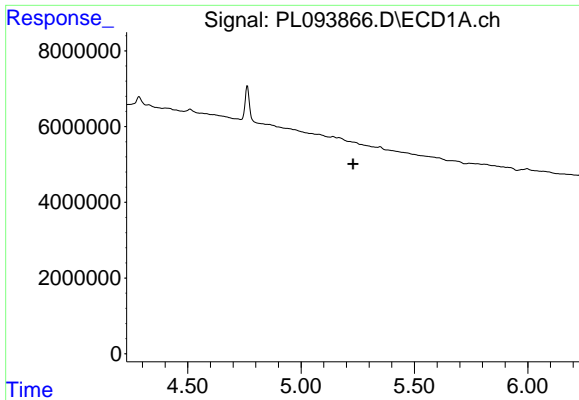
#20 Methoxychlor

R.T.: 0.000 min
 Exp R.T.: 7.498 min
 Response: 0
 Conc: N.D.



#20 Methoxychlor

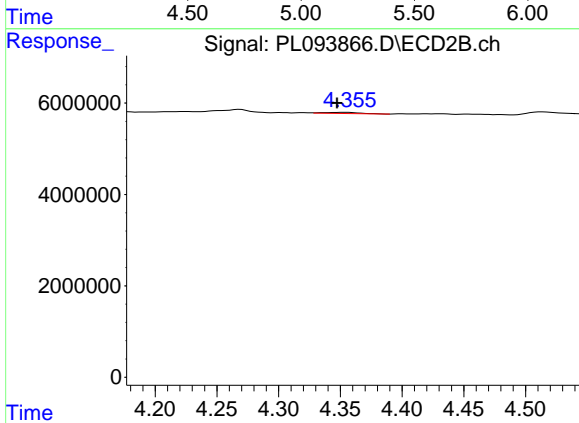
R.T.: 6.609 min
 Delta R.T.: 0.000 min
 Response: 62848
 Conc: 0.04 ng/ml



#24 Chlordane-2

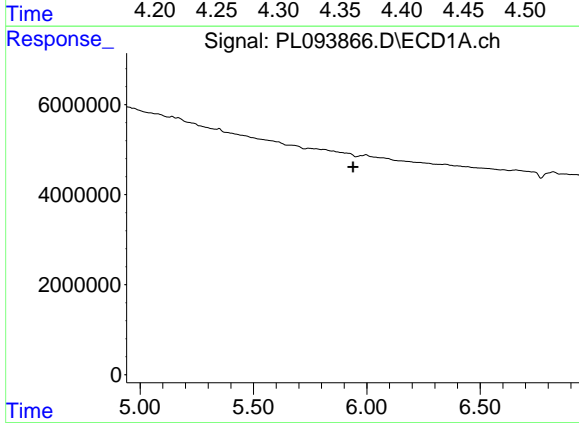
R.T.: 0.000 min
 Exp R.T. : 5.229 min
 Response: 0
 Conc: N.D.

Instrument :
 ECD_L
 ClientSampleId :
 JPP-16.3-012725



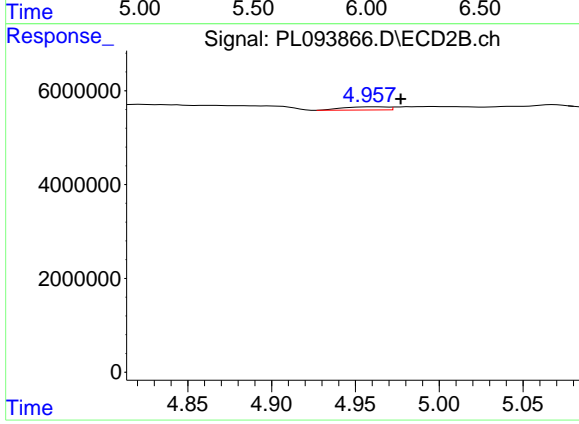
#24 Chlordane-2

R.T.: 4.356 min
 Delta R.T.: 0.009 min
 Response: 501004
 Conc: 3.41 ng/ml



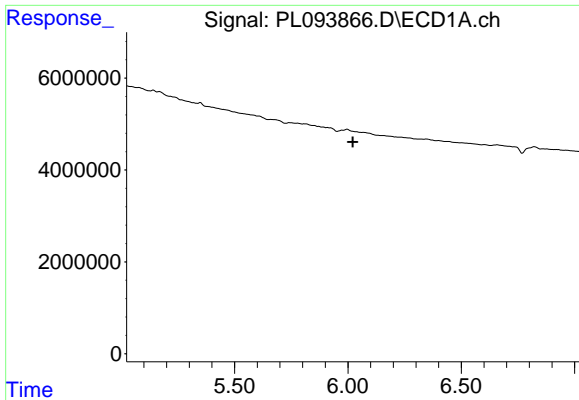
#25 Chlordane-3

R.T.: 0.000 min
 Exp R.T. : 5.939 min
 Response: 0
 Conc: N.D.



#25 Chlordane-3

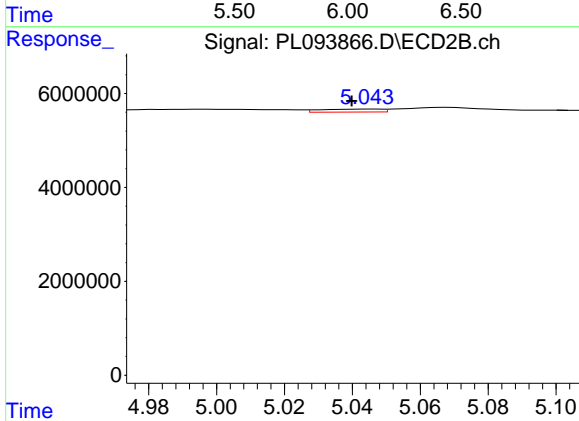
R.T.: 4.959 min
 Delta R.T.: -0.018 min
 Response: 1264425
 Conc: 2.91 ng/ml



#26 Chlordane-4

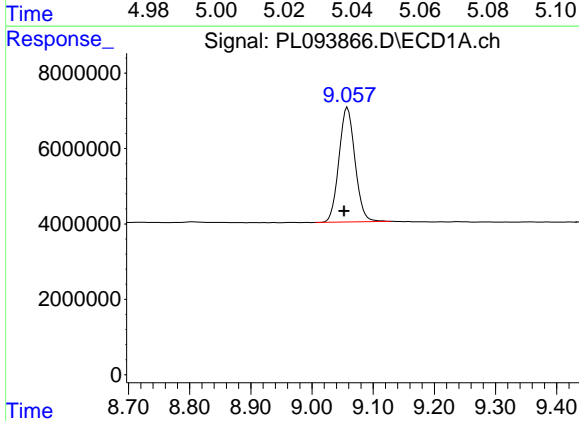
R.T.: 0.000 min
 Exp R.T.: 6.021 min
 Response: 0
 Conc: N.D.

Instrument :
 ECD_L
 ClientSampleId :
 JPP-16.3-012725



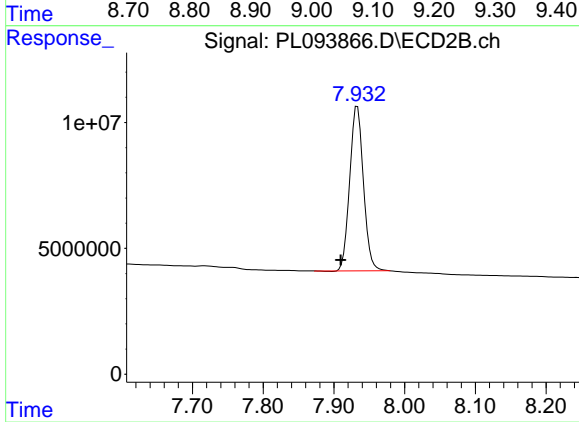
#26 Chlordane-4

R.T.: 5.046 min
 Delta R.T.: 0.006 min
 Response: 791666
 Conc: 1.87 ng/ml



#28 Decachlorobiphenyl

R.T.: 9.058 min
 Delta R.T.: 0.005 min
 Response: 55471583
 Conc: 26.52 ng/ml



#28 Decachlorobiphenyl

R.T.: 7.933 min
 Delta R.T.: 0.023 min
 Response: 88460799
 Conc: 25.25 ng/ml