

Data Path : Z:\pestpcbsrv\HPCHEM1\ECD\_L\Data\PL013020\  
 Data File : PL056221.D  
 Signal(s) : Signal #1: ECD1A.ch Signal #2: ECD2B.ch  
 Acq On : 30 Jan 2020 15:20  
 Operator : AJ\MA  
 Sample : L1310-03  
 Misc :  
 ALS Vial : 18 Sample Multiplier: 1

Instrument :  
 ECD\_L  
 ClientSampleId :

Integration File signal 1: autoint1.e  
 Integration File signal 2: autoint2.e  
 Quant Time: Jan 31 00:39:19 2020  
 Quant Method : Z:\pestpcbsrv\HPCHEM1\ECD\_L\methods\PL012820.M  
 Quant Title : GC Extractables  
 QLast Update : Tue Jan 28 13:10:37 2020  
 Response via : Initial Calibration  
 Integrator: ChemStation

Volume Inj. : 1 µl  
 Signal #1 Phase : ZB-MR2 Signal #2 Phase: ZB-MR1  
 Signal #1 Info : 30M x 0.32mm x0.2 Signal #2 Info : 30M x 0.32mm x0.5µm

Compound	RT#1	RT#2	Resp#1	Resp#2	ng/ml	ng/ml
-----						
System Monitoring Compounds						
1) SA Tetrachlo...	3.497	4.014	122.5E6	36276464	11.697	12.406
28) SA Decachlor...	8.250	9.088	112.1E6	26934669	10.647	11.908
Target Compounds						
12) B 4,4'-DDE	5.659	0.000	12662371	0	0.874	N.D. #
17) MA 4,4'-DDT	6.413	0.000	10972534	0	1.004	N.D. #
20) A Methoxychlor	6.946f	0.000	11169478	0	2.103	N.D. #
23) Chlordane-1	4.369	0.000	13198840	0	34.867	N.D. #
-----						

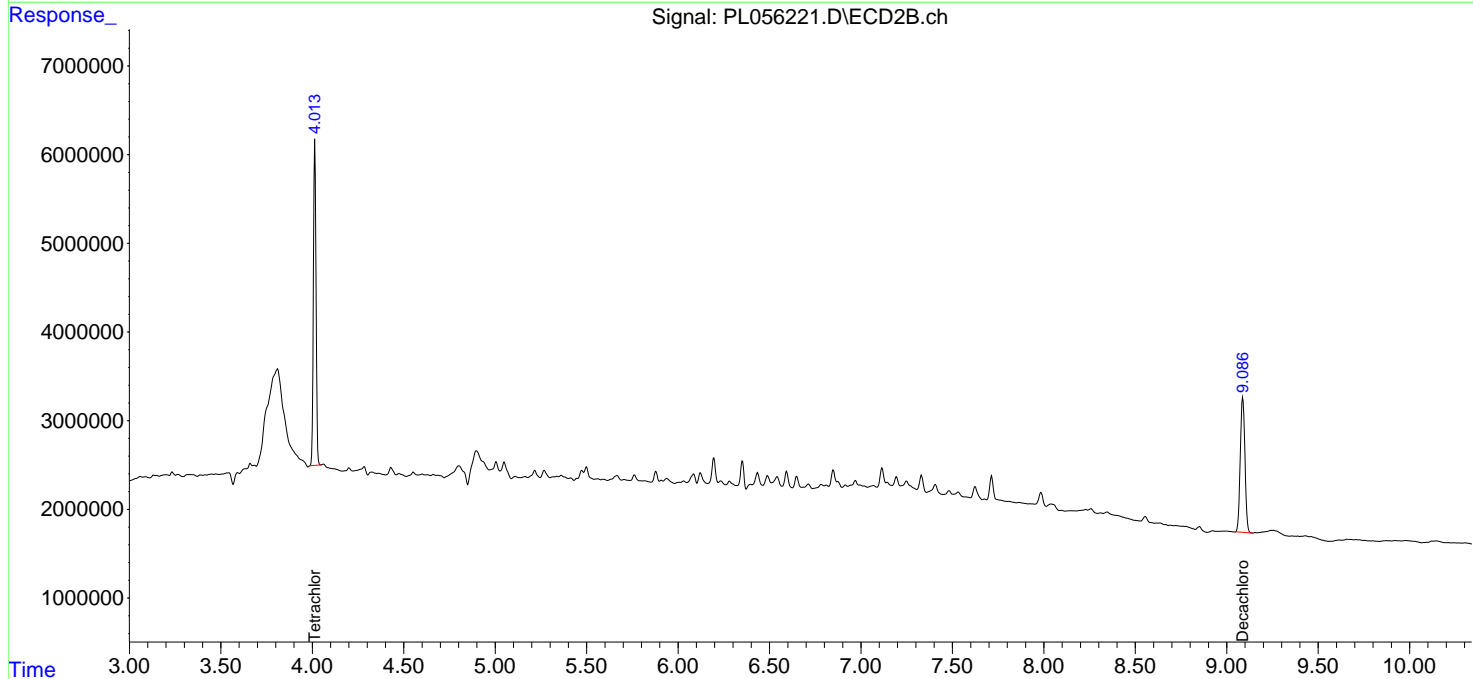
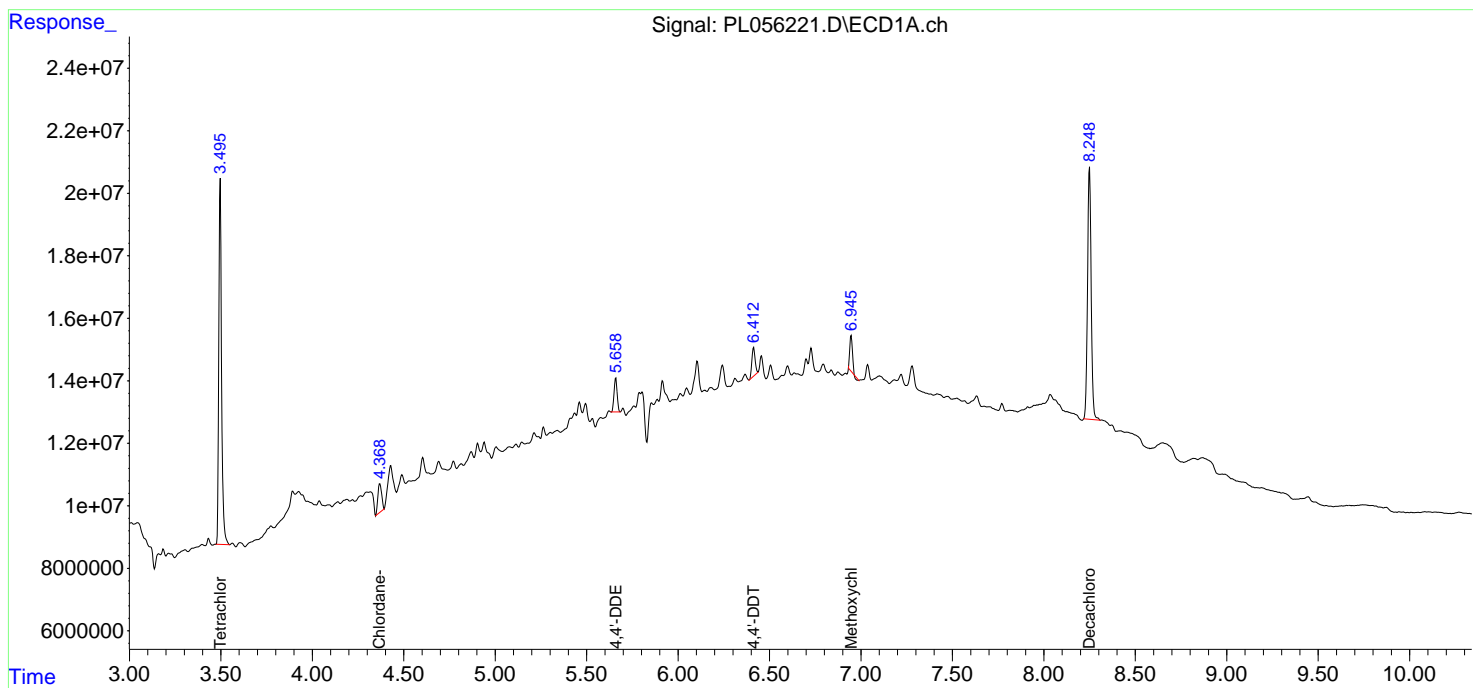
(f)=RT Delta > 1/2 Window (#)=Amounts differ by > 25% (m)=manual int.

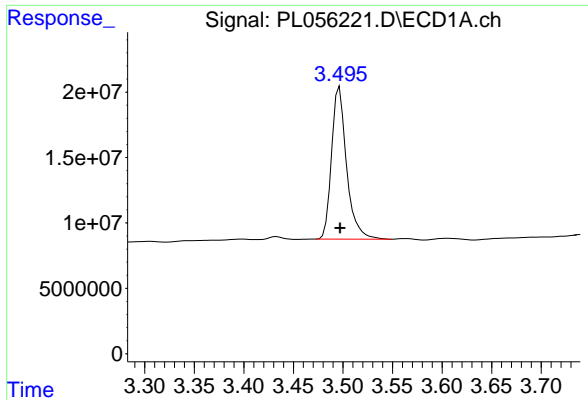
Data Path : Z:\pestpcbsrv\HPCHEM1\ECD\_L\Data\PL013020\  
 Data File : PL056221.D  
 Signal(s) : Signal #1: ECD1A.ch Signal #2: ECD2B.ch  
 Acq On : 30 Jan 2020 15:20  
 Operator : AJ\MA  
 Sample : L1310-03  
 Misc :  
 ALS Vial : 18 Sample Multiplier: 1

Instrument :  
 ECD\_L  
 ClientSampled :

Integration File signal 1: autoint1.e  
 Integration File signal 2: autoint2.e  
 Quant Time: Jan 31 00:39:19 2020  
 Quant Method : Z:\pestpcbsrv\HPCHEM1\ECD\_L\methods\PL012820.M  
 Quant Title : GC Extractables  
 QLast Update : Tue Jan 28 13:10:37 2020  
 Response via : Initial Calibration  
 Integrator: ChemStation

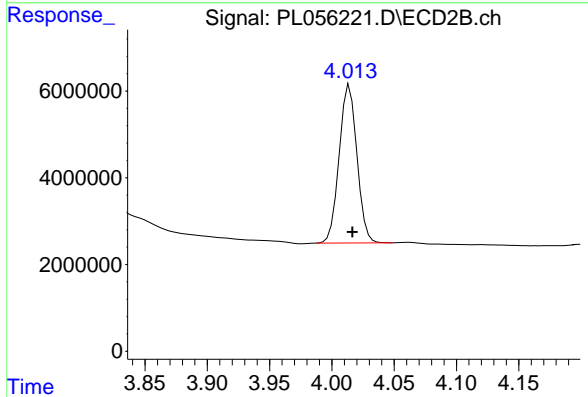
Volume Inj. : 1 µl  
 Signal #1 Phase : ZB-MR2 Signal #2 Phase: ZB-MR1  
 Signal #1 Info : 30M x 0.32mm x0.2 Signal #2 Info : 30M x 0.32mm x0.5µm



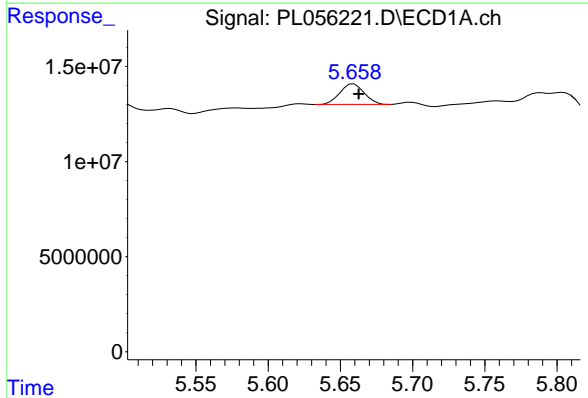


#1 Tetrachloro-m-xylene  
 R.T.: 3.497 min  
 Delta R.T.: 0.000 min  
 Response: 122498387  
 Conc: 11.70 ng/ml

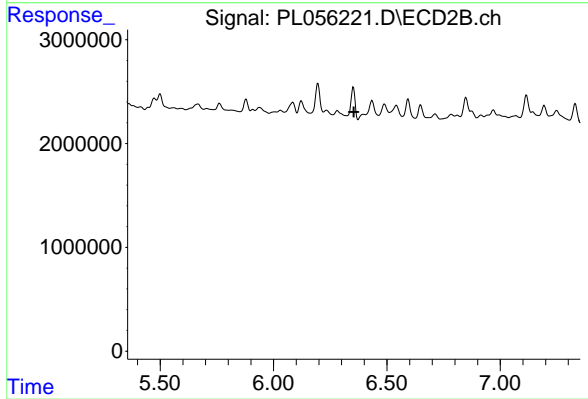
Instrument :  
 ECD\_L  
 ClientSampleId :



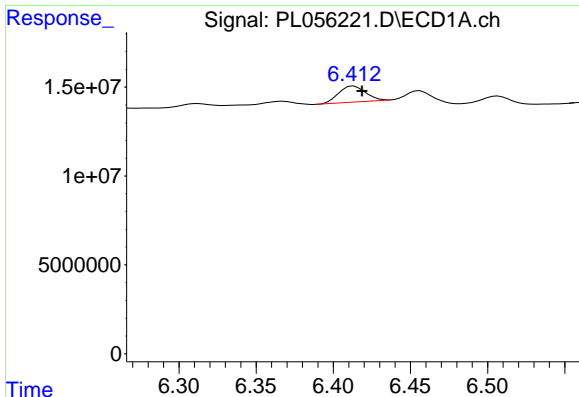
#1 Tetrachloro-m-xylene  
 R.T.: 4.014 min  
 Delta R.T.: -0.002 min  
 Response: 36276464  
 Conc: 12.41 ng/ml



#12 4,4'-DDE  
 R.T.: 5.659 min  
 Delta R.T.: -0.003 min  
 Response: 12662371  
 Conc: 0.87 ng/ml



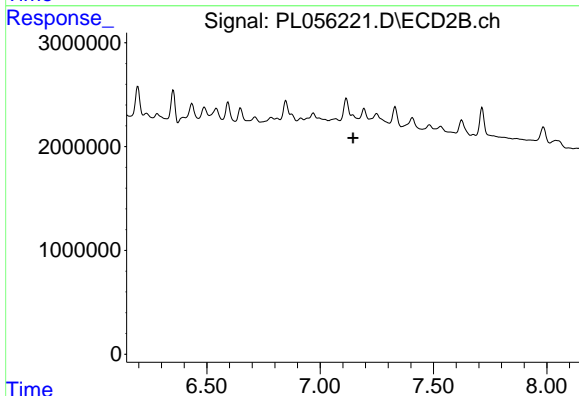
#12 4,4'-DDE  
 R.T.: 0.000 min  
 Exp R.T. : 6.355 min  
 Response: 0  
 Conc: N.D.



#17 4,4'-DDT

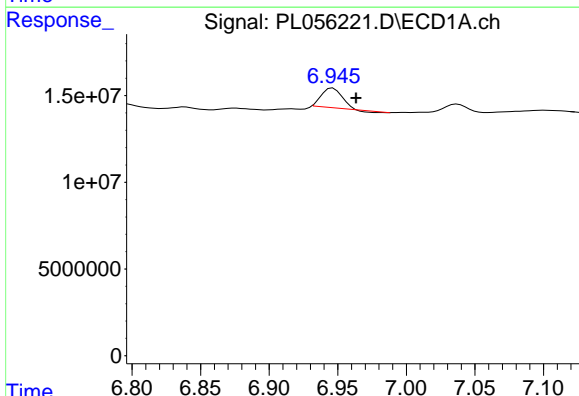
R.T.: 6.413 min  
 Delta R.T.: -0.005 min  
 Response: 10972534  
 Conc: 1.00 ng/ml

Instrument :  
 ECD\_L  
 ClientSampled :



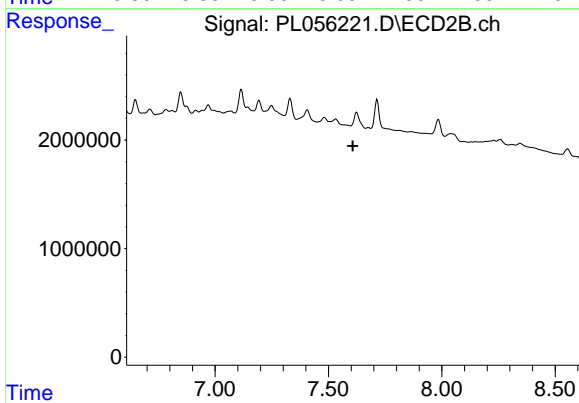
#17 4,4'-DDT

R.T.: 0.000 min  
 Exp R.T. : 7.146 min  
 Response: 0  
 Conc: N.D.



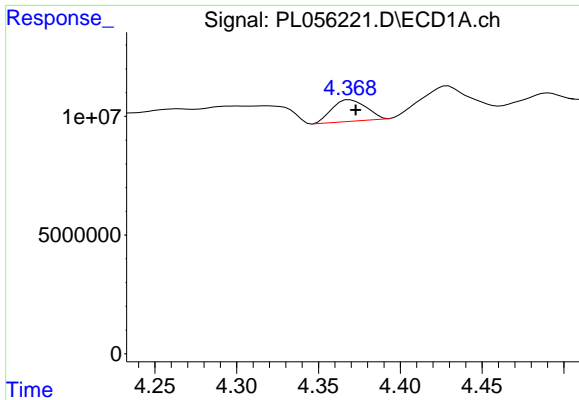
#20 Methoxychlor

R.T.: 6.946 min  
 Delta R.T.: -0.017 min  
 Response: 11169478  
 Conc: 2.10 ng/ml



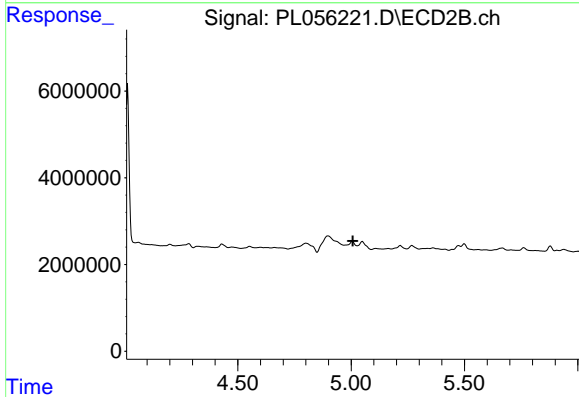
#20 Methoxychlor

R.T.: 0.000 min  
 Exp R.T. : 7.607 min  
 Response: 0  
 Conc: N.D.

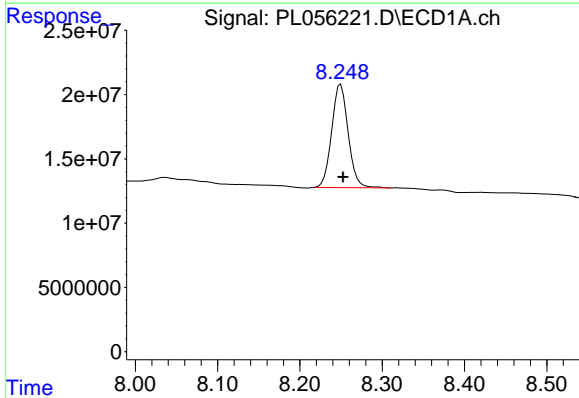


#23 Chlordane-1  
 R.T.: 4.369 min  
 Delta R.T.: -0.003 min  
 Response: 13198840  
 Conc: 34.87 ng/ml

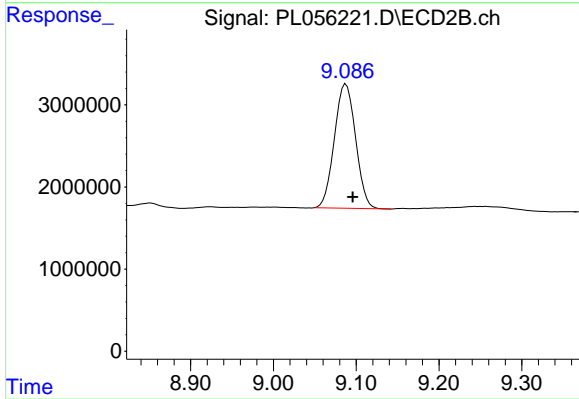
Instrument :  
 ECD\_L  
 ClientSampled :



#23 Chlordane-1  
 R.T.: 0.000 min  
 Exp R.T. : 5.008 min  
 Response: 0  
 Conc: N.D.



#28 Decachlorobiphenyl  
 R.T.: 8.250 min  
 Delta R.T.: -0.003 min  
 Response: 112090451  
 Conc: 10.65 ng/ml



#28 Decachlorobiphenyl  
 R.T.: 9.088 min  
 Delta R.T.: -0.008 min  
 Response: 26934669  
 Conc: 11.91 ng/ml