

Data Path : Z:\pestpcbsrv\HPCHEM1\ECD_L\Data\PL013020\
 Data File : PL056222.D
 Signal(s) : Signal #1: ECD1A.ch Signal #2: ECD2B.ch
 Acq On : 30 Jan 2020 15:34
 Operator : AJ\MA
 Sample : L1313-01
 Misc :
 ALS Vial : 19 Sample Multiplier: 1

Instrument :
 ECD_L
 ClientSampleId :
 RBR-36

Integration File signal 1: autoint1.e
 Integration File signal 2: autoint2.e
 Quant Time: Jan 31 00:39:30 2020
 Quant Method : Z:\pestpcbsrv\HPCHEM1\ECD_L\methods\PL012820.M
 Quant Title : GC Extractables
 QLast Update : Tue Jan 28 13:10:37 2020
 Response via : Initial Calibration
 Integrator: ChemStation

Volume Inj. : 1 µl
 Signal #1 Phase : ZB-MR2 Signal #2 Phase: ZB-MR1
 Signal #1 Info : 30M x 0.32mm x0.2 Signal #2 Info : 30M x 0.32mm x0.5µm

Compound	RT#1	RT#2	Resp#1	Resp#2	ng/ml	ng/ml

System Monitoring Compounds						
1) SA Tetrachlo...	3.497	4.014	113.9E6	35344671	10.877	12.087
28) SA Decachlor...	8.250	9.087	105.6E6	25716144	10.031	11.369
Target Compounds						
2) A alpha-BHC	0.000	4.429f	0	13856337	N.D.	3.166 #
12) B 4,4'-DDE	5.660	0.000	24890781	0	1.717	N.D. #
17) MA 4,4'-DDT	6.417	0.000	15060973	0	1.378	N.D. #

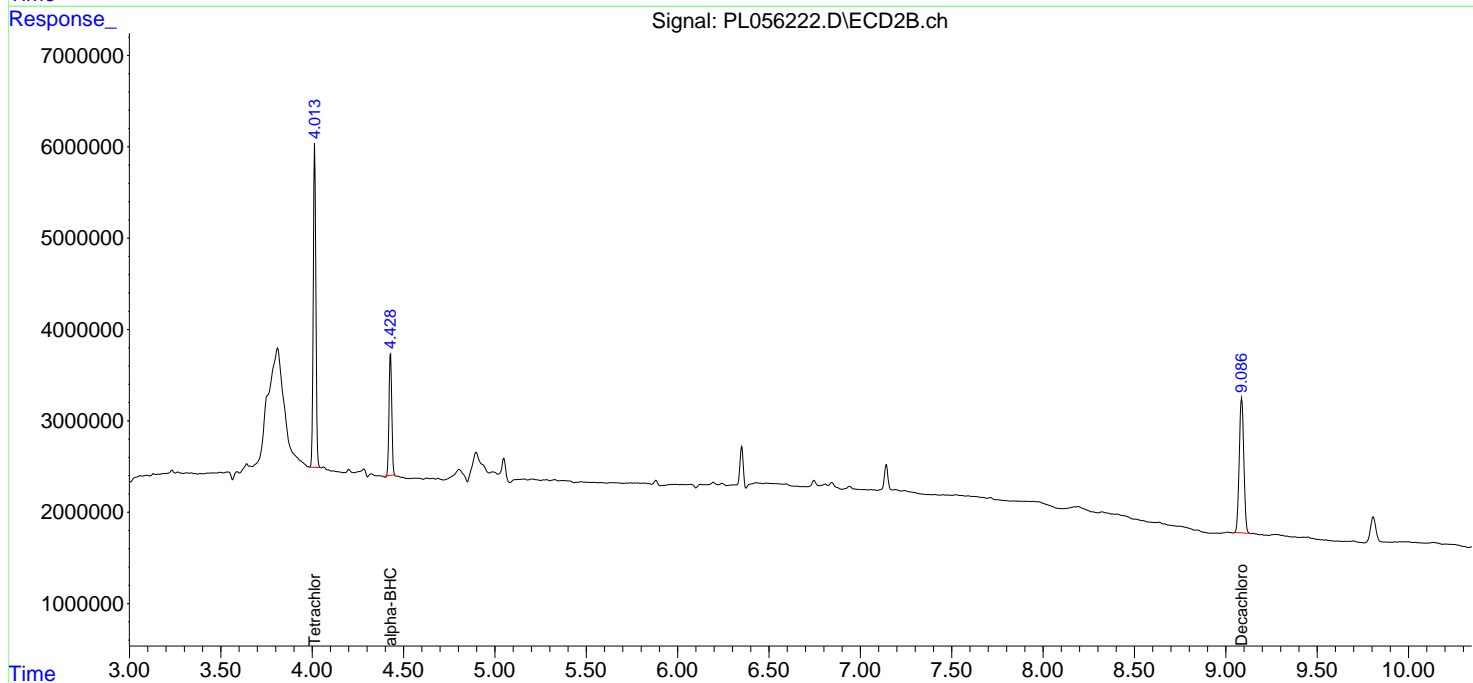
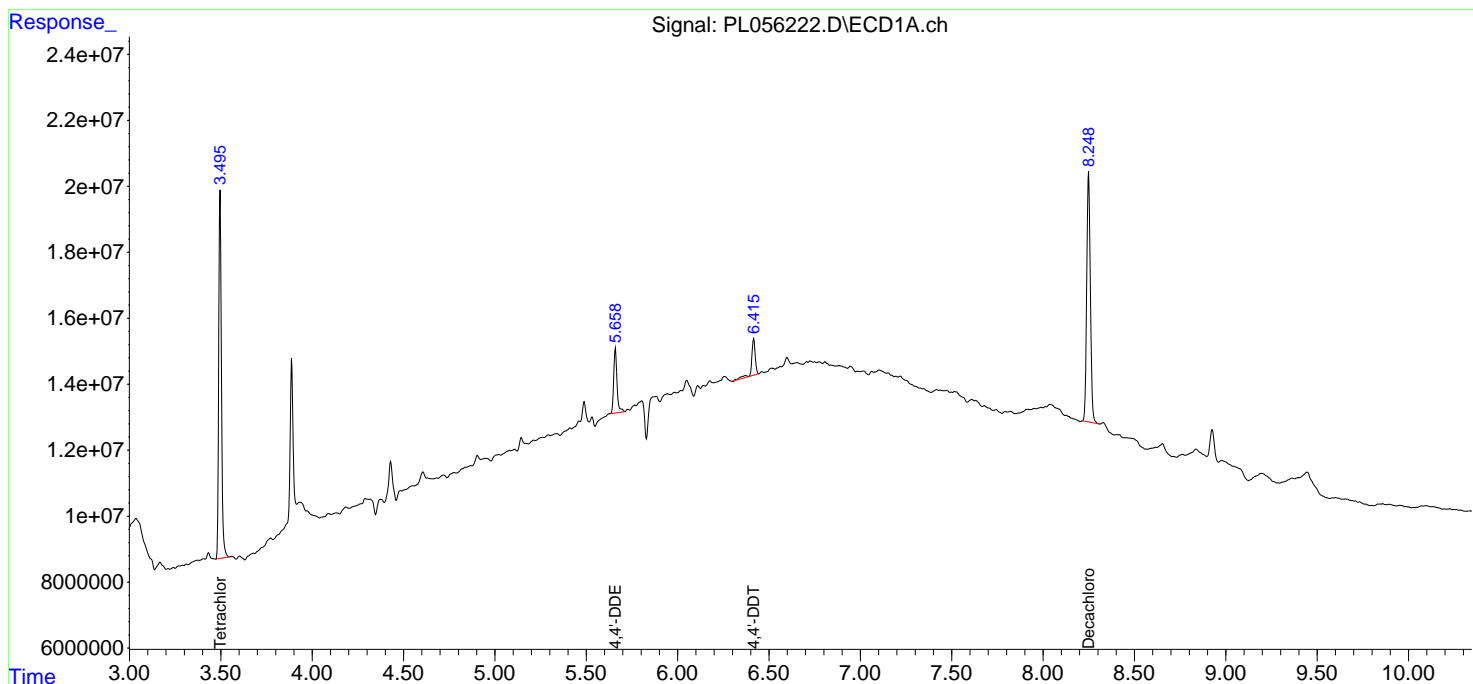
(f)=RT Delta > 1/2 Window (#)=Amounts differ by > 25% (m)=manual int.

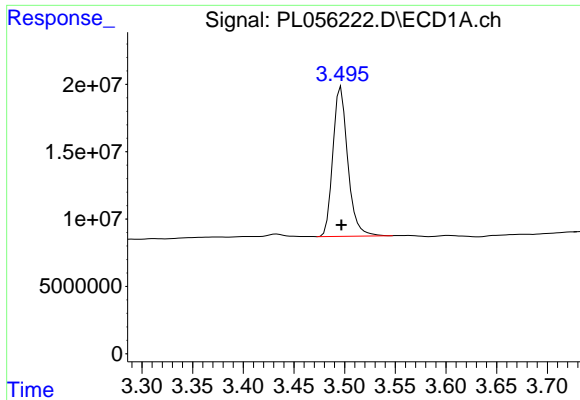
Data Path : Z:\pestpcbsrv\HPCHEM1\ECD_L\Data\PL013020\
 Data File : PL056222.D
 Signal(s) : Signal #1: ECD1A.ch Signal #2: ECD2B.ch
 Acq On : 30 Jan 2020 15:34
 Operator : AJ\MA
 Sample : L1313-01
 Misc :
 ALS Vial : 19 Sample Multiplier: 1

Instrument :
 ECD_L
 ClientSampleId :
 RBR-36

Integration File signal 1: autoint1.e
 Integration File signal 2: autoint2.e
 Quant Time: Jan 31 00:39:30 2020
 Quant Method : Z:\pestpcbsrv\HPCHEM1\ECD_L\methods\PL012820.M
 Quant Title : GC Extractables
 QLast Update : Tue Jan 28 13:10:37 2020
 Response via : Initial Calibration
 Integrator: ChemStation

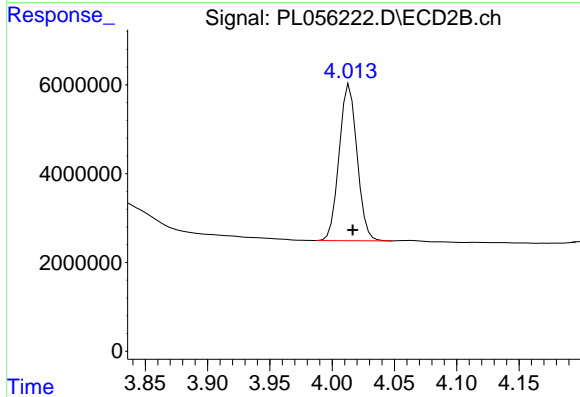
Volume Inj. : 1 µl
 Signal #1 Phase : ZB-MR2 Signal #2 Phase: ZB-MR1
 Signal #1 Info : 30M x 0.32mm x0.2 Signal #2 Info : 30M x 0.32mm x0.5µm



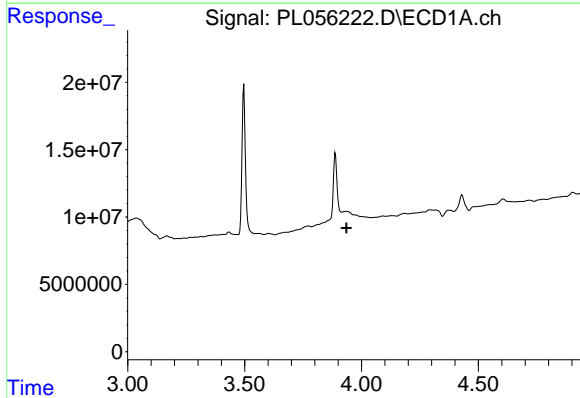


#1 Tetrachloro-m-xylene
 R.T.: 3.497 min
 Delta R.T.: 0.000 min
 Response: 113915420
 Conc: 10.88 ng/ml

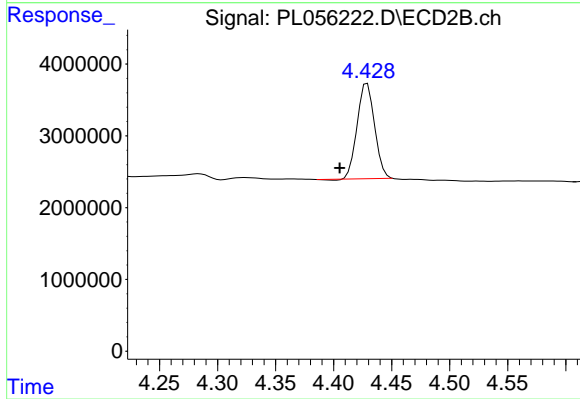
Instrument :
 ECD_L
 ClientSampleId :
 RBR-36



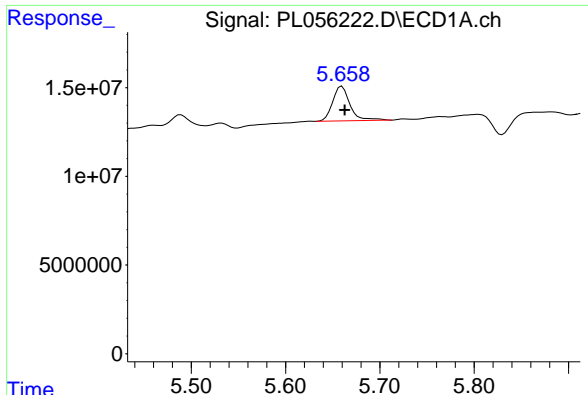
#1 Tetrachloro-m-xylene
 R.T.: 4.014 min
 Delta R.T.: -0.002 min
 Response: 35344671
 Conc: 12.09 ng/ml



#2 alpha-BHC
 R.T.: 0.000 min
 Exp R.T. : 3.936 min
 Response: 0
 Conc: N.D.



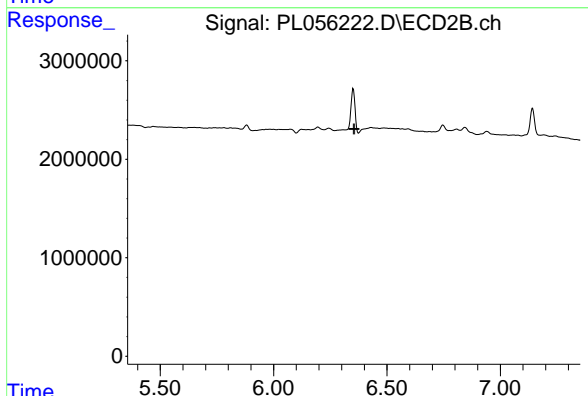
#2 alpha-BHC
 R.T.: 4.429 min
 Delta R.T.: 0.024 min
 Response: 13856337
 Conc: 3.17 ng/ml



#12 4,4'-DDE

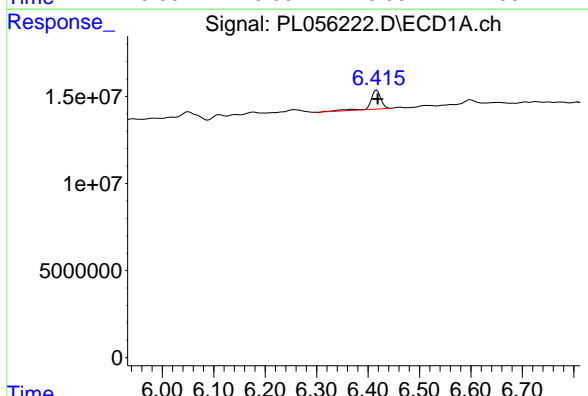
R.T.: 5.660 min
 Delta R.T.: -0.003 min
 Response: 24890781
 Conc: 1.72 ng/ml

Instrument :
 ECD_L
 ClientSampled :
 RBR-36



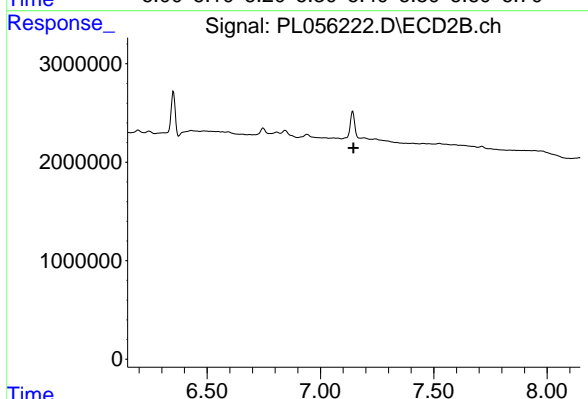
#12 4,4'-DDE

R.T.: 0.000 min
 Exp R.T. : 6.355 min
 Response: 0
 Conc: N.D.



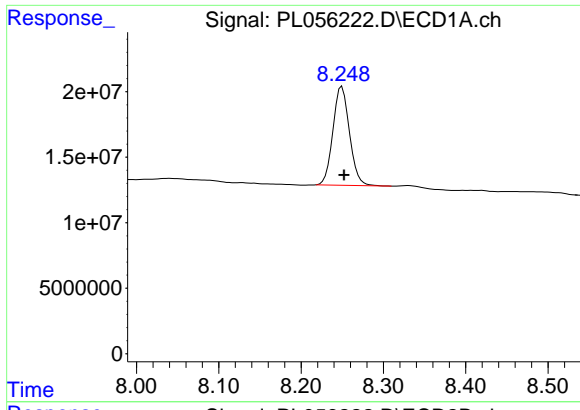
#17 4,4'-DDT

R.T.: 6.417 min
 Delta R.T.: -0.002 min
 Response: 15060973
 Conc: 1.38 ng/ml



#17 4,4'-DDT

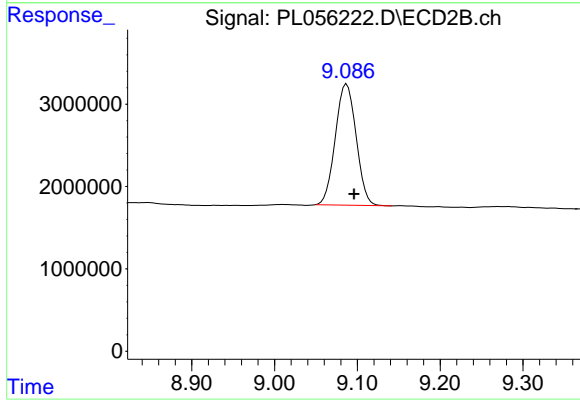
R.T.: 0.000 min
 Exp R.T. : 7.146 min
 Response: 0
 Conc: N.D.



#28 Decachlorobiphenyl

R.T.: 8.250 min
Delta R.T.: -0.003 min
Response: 105611490
Conc: 10.03 ng/ml

Instrument :
ECD_L
ClientSampled :
RBR-36



#28 Decachlorobiphenyl

R.T.: 9.087 min
Delta R.T.: -0.009 min
Response: 25716144
Conc: 11.37 ng/ml