

Data Path : Z:\pestpcbsrv\HPCHEM1\ECD_L\Data\PL013024\
 Data File : PL088077.D
 Signal(s) : Signal #1: ECD1A.ch Signal #2: ECD2B.ch
 Acq On : 31 Jan 2024 00:11
 Operator : AR\AJ
 Sample : I.BLK
 Misc :
 ALS Vial : 2 Sample Multiplier: 1

Integration File signal 1: autoint1.e
 Integration File signal 2: autoint2.e
 Quant Time: Jan 31 03:47:06 2024
 Quant Method : Z:\pestpcbsrv\HPCHEM1\ECD_L\methods\PL012724.M
 Quant Title : GC Extractables
 QLast Update : Mon Jan 29 12:34:13 2024
 Response via : Initial Calibration
 Integrator: ChemStation

Volume Inj. : 1 µl
 Signal #1 Phase : ZB-MR2 Signal #2 Phase: ZB-MR1
 Signal #1 Info : 30M x 0.32mm x0.2 Signal #2 Info : 30M x 0.32mm x0.5µm

	Compound	RT#1	RT#2	Resp#1	Resp#2	ng/ml	ng/ml

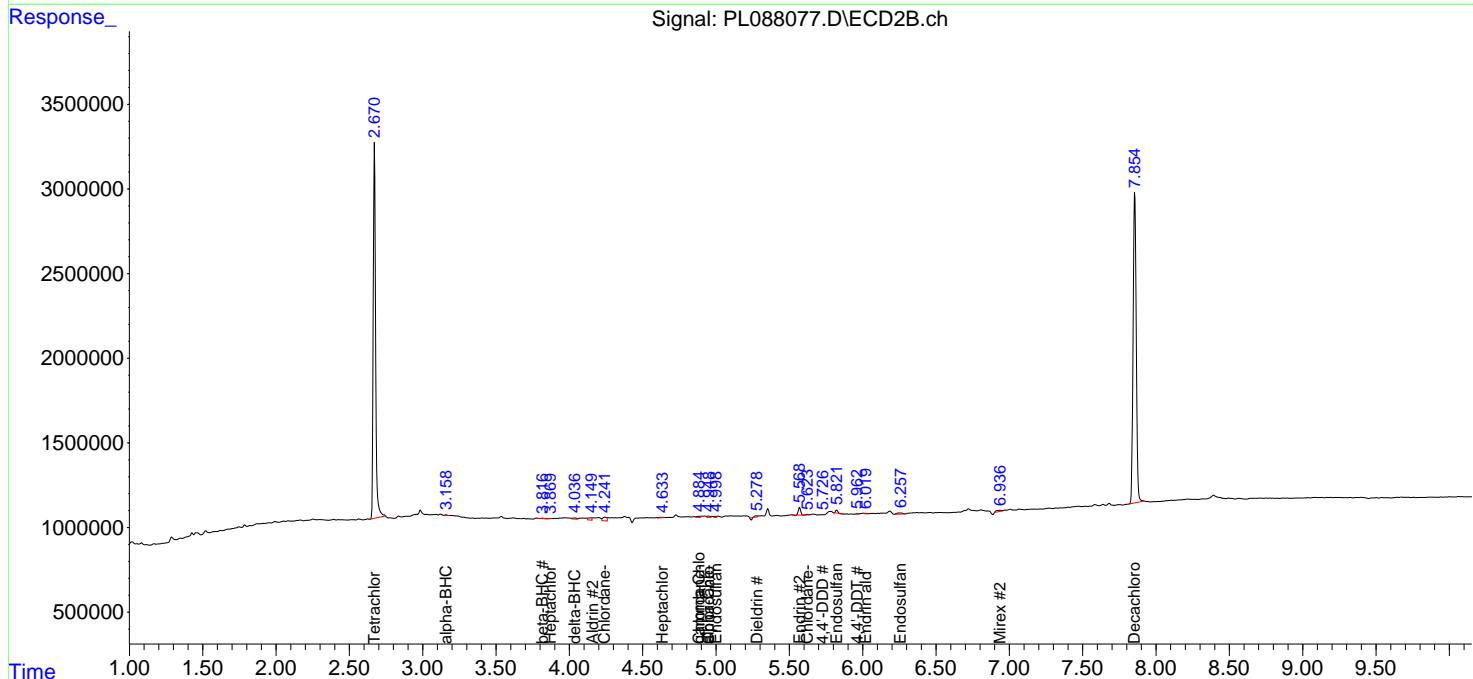
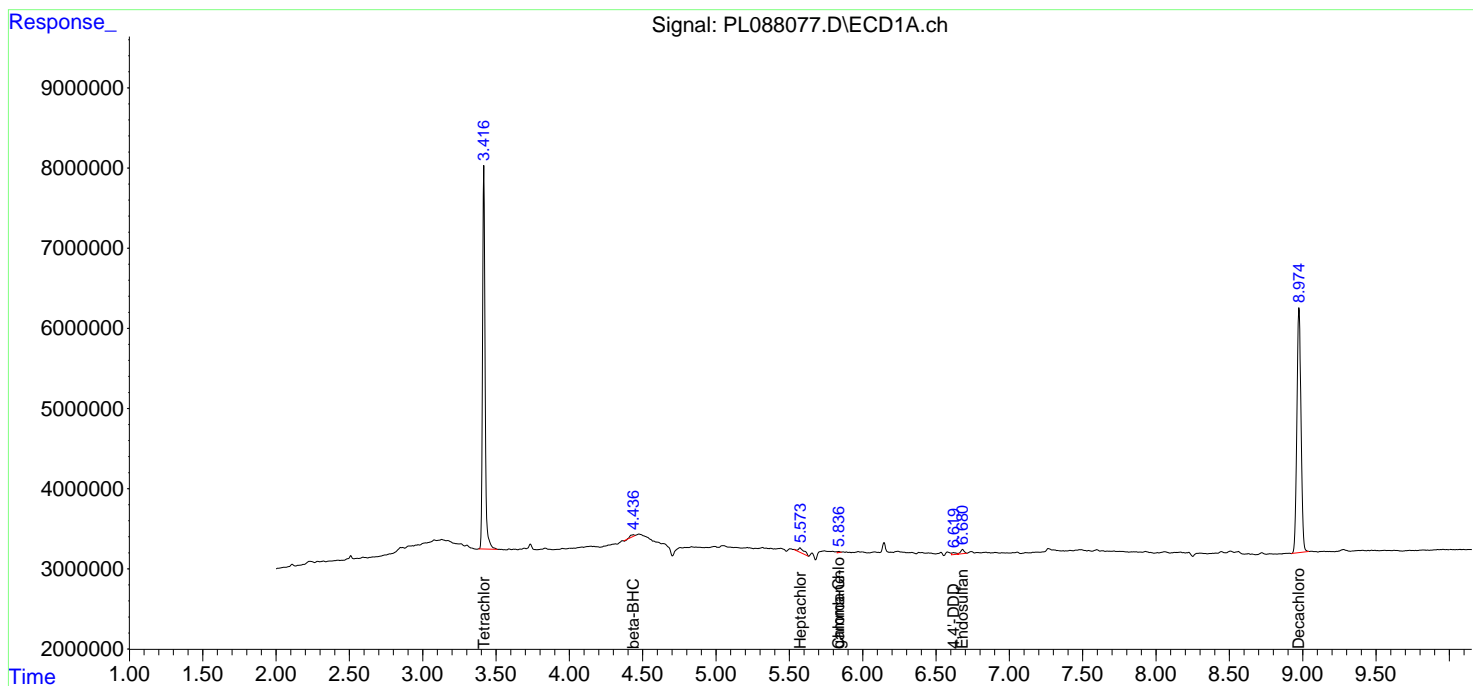
System Monitoring Compounds							
1)	SA Tetrachlo...	3.417	2.671	58799790	24615819	20.272	19.832
28)	SA Decachlor...	8.975	7.855	59275959	27571253	22.118	22.670
Target Compounds							
2)	A alpha-BHC	0.000	3.159f	0	36711	N.D.	0.020 #
4)	MA Heptachlor	0.000	3.871f	0	14791	N.D.	0.009 #
5)	MB Aldrin	0.000	4.150f	0	222767	N.D.	0.128 #
6)	B beta-BHC	4.437f	3.816	380547	13048	0.206	0.017 #
7)	B delta-BHC	0.000	4.036	0	137101	N.D.	0.079 #
8)	B Heptachlo...	5.573	4.635	1562720	62606	0.414	0.040 #
9)	A Endosulfan I	0.000	4.999	0	67882	N.D.	0.048 #
10)	B gamma-Chl...	5.838	4.886	170289	102982	0.046	0.067 #
11)	B alpha-Chl...	0.000	4.950	0	106689	N.D.	0.068 #
13)	MA Dieldrin	0.000	5.279	0	3563	N.D.	0.002 #
14)	MA Endrin	0.000	5.570f	0	492874	N.D.	0.364 #
15)	B Endosulfa...	6.682	5.822f	869377	176071	0.286	0.135 #
16)	A 4,4'-DDD	6.620	5.727f	503107	4598	0.209	0.004 #
17)	MA 4,4'-DDT	0.000	5.964	0	22445	N.D.	0.019 #
18)	B Endrin al...	0.000	6.021	0	36381	N.D.	0.036 #
19)	B Endosulfa...	0.000	6.259	0	200688	N.D.	0.158 #
22)	Mirex	0.000	6.938	0	200964	N.D.	0.156 #
24)	Chlordane-2	0.000	4.243	0	420355	N.D.	6.994 #
25)	Chlordane-3	5.838	4.886	170289	102982	0.319	0.652 #
26)	Chlordane-4	0.000	4.950	0	106689	N.D.	0.639 #
27)	Chlordane-5	0.000	5.624	0	45915	N.D.	1.007 #

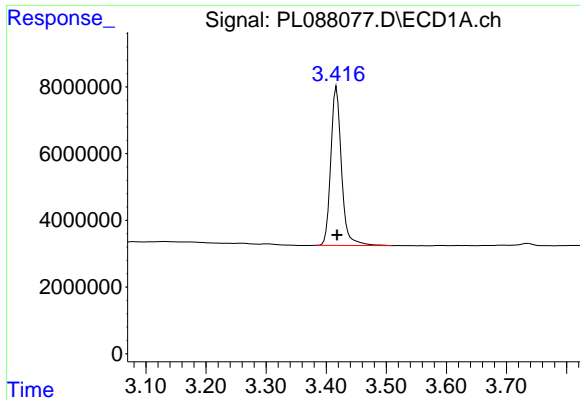
(f)=RT Delta > 1/2 Window (#)=Amounts differ by > 25% (m)=manual int.

Data Path : Z:\pestpcbsrv\HPCHEM1\ECD_L\Data\PL013024\
 Data File : PL088077.D
 Signal(s) : Signal #1: ECD1A.ch Signal #2: ECD2B.ch
 Acq On : 31 Jan 2024 00:11
 Operator : AR\AJ
 Sample : I.BLK
 Misc :
 ALS Vial : 2 Sample Multiplier: 1

Integration File signal 1: autoint1.e
 Integration File signal 2: autoint2.e
 Quant Time: Jan 31 03:47:06 2024
 Quant Method : Z:\pestpcbsrv\HPCHEM1\ECD_L\methods\PL012724.M
 Quant Title : GC Extractables
 QLast Update : Mon Jan 29 12:34:13 2024
 Response via : Initial Calibration
 Integrator: ChemStation

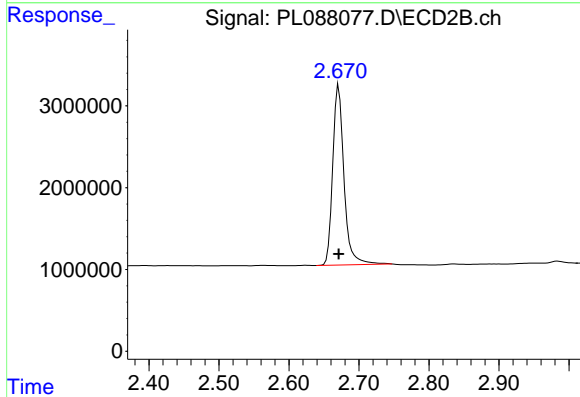
Volume Inj. : 1 µl
 Signal #1 Phase : ZB-MR2 Signal #2 Phase: ZB-MR1
 Signal #1 Info : 30M x 0.32mm x0.2 Signal #2 Info : 30M x 0.32mm x0.5µm





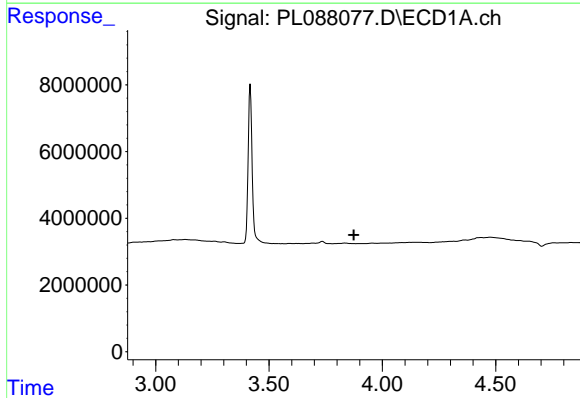
#1 Tetrachloro-m-xylene

R.T.: 3.417 min
 Delta R.T.: 0.000 min
 Response: 58799790
 Conc: 20.27 ng/ml



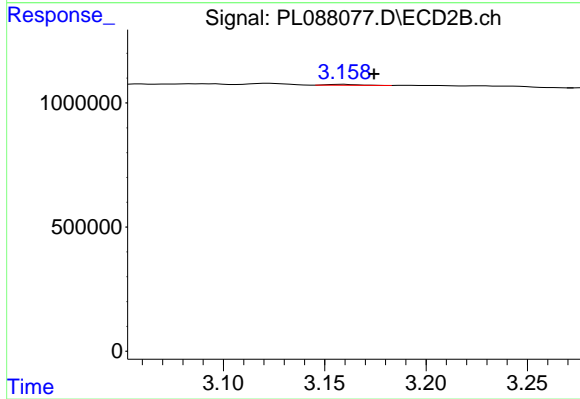
#1 Tetrachloro-m-xylene

R.T.: 2.671 min
 Delta R.T.: 0.000 min
 Response: 24615819
 Conc: 19.83 ng/ml



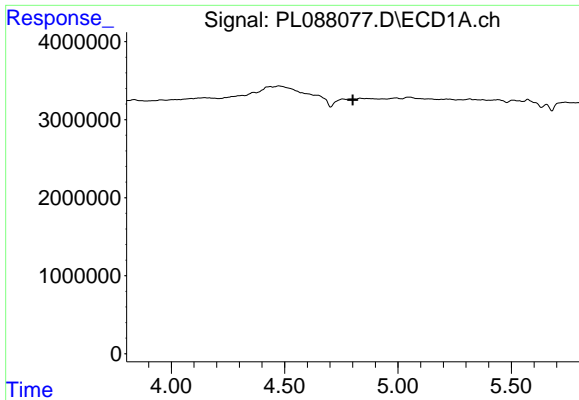
#2 alpha-BHC

R.T.: 0.000 min
 Exp R.T. : 3.874 min
 Response: 0
 Conc: N.D.



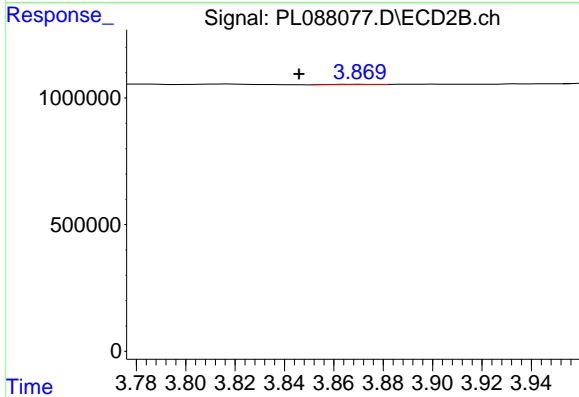
#2 alpha-BHC

R.T.: 3.159 min
 Delta R.T.: -0.015 min
 Response: 36711
 Conc: 0.02 ng/ml



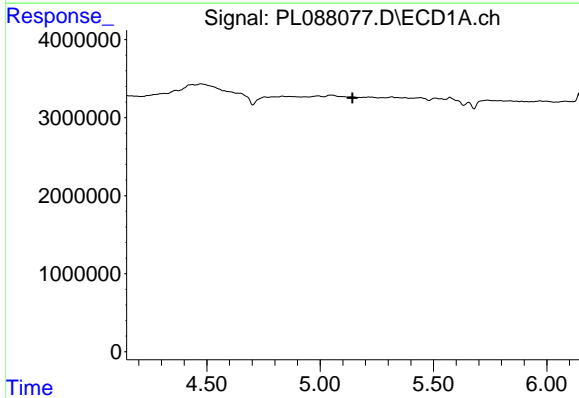
#4 Heptachlor

R.T.: 0.000 min
 Exp R.T. : 4.801 min
 Response: 0
 Conc: N.D.



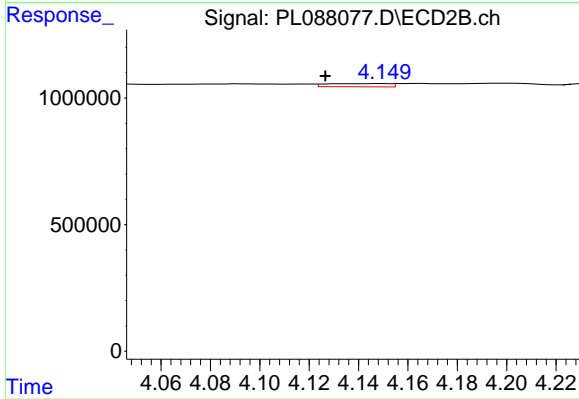
#4 Heptachlor

R.T.: 3.871 min
 Delta R.T.: 0.025 min
 Response: 14791
 Conc: 0.01 ng/ml



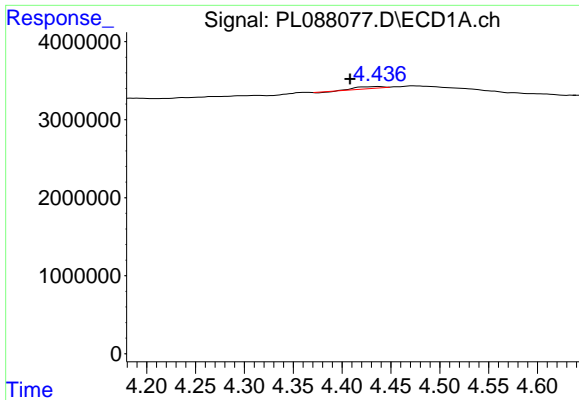
#5 Aldrin

R.T.: 0.000 min
 Exp R.T. : 5.143 min
 Response: 0
 Conc: N.D.

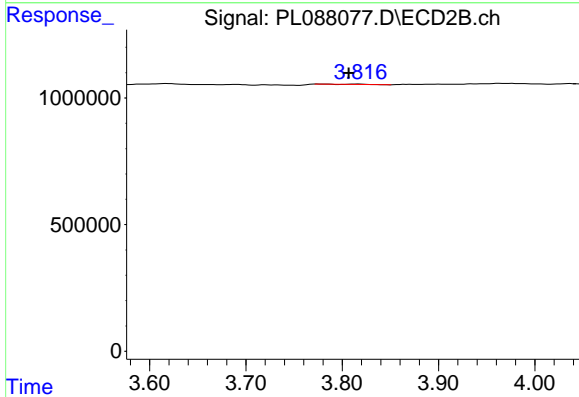


#5 Aldrin

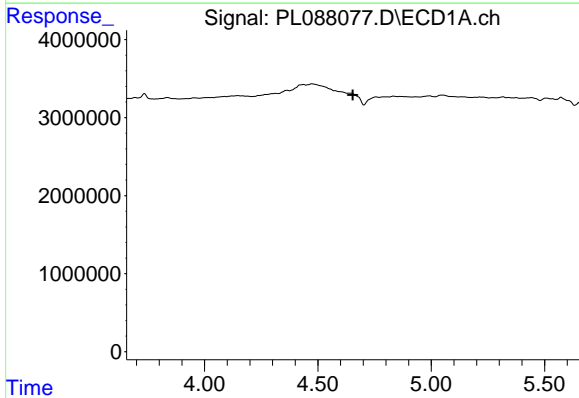
R.T.: 4.150 min
 Delta R.T.: 0.024 min
 Response: 222767
 Conc: 0.13 ng/ml



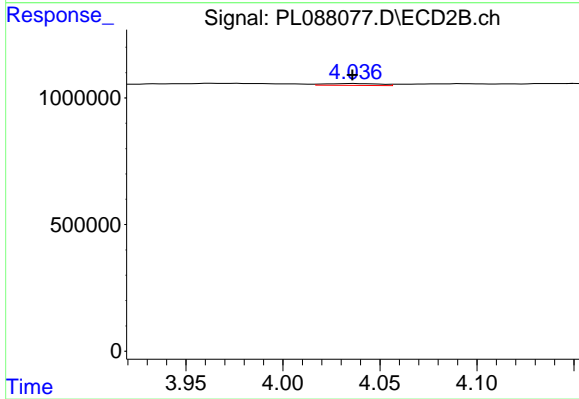
#6 beta-BHC
 R.T.: 4.437 min
 Delta R.T.: 0.029 min
 Response: 380547
 Conc: 0.21 ng/ml



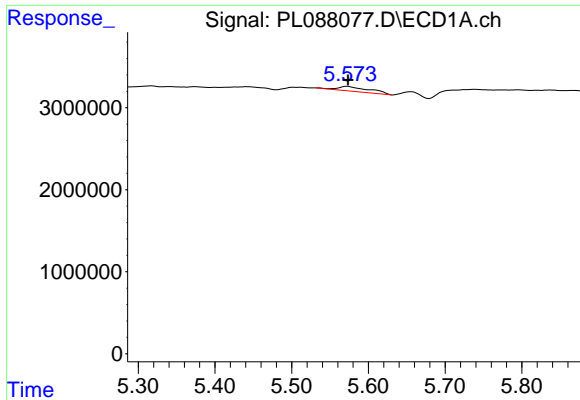
#6 beta-BHC
 R.T.: 3.816 min
 Delta R.T.: 0.009 min
 Response: 13048
 Conc: 0.02 ng/ml



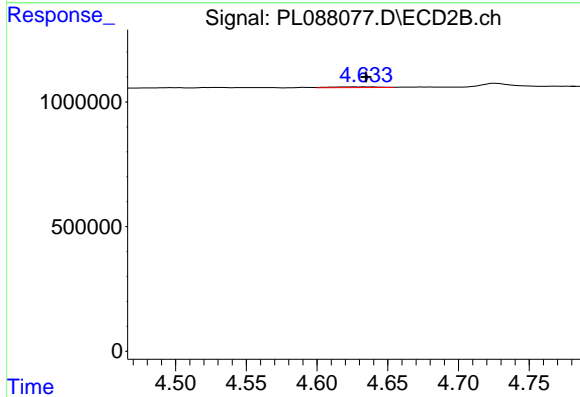
#7 delta-BHC
 R.T.: 0.000 min
 Exp R.T. : 4.654 min
 Response: 0
 Conc: N.D.



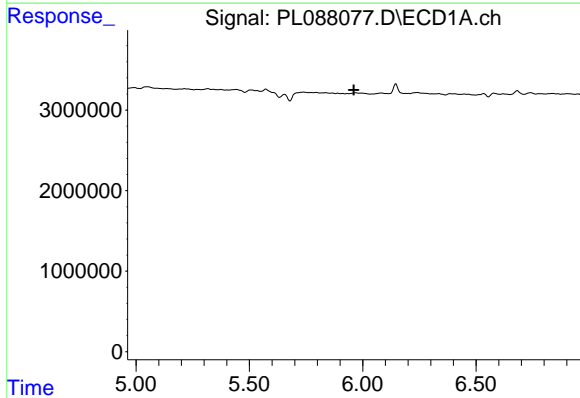
#7 delta-BHC
 R.T.: 4.036 min
 Delta R.T.: 0.000 min
 Response: 137101
 Conc: 0.08 ng/ml



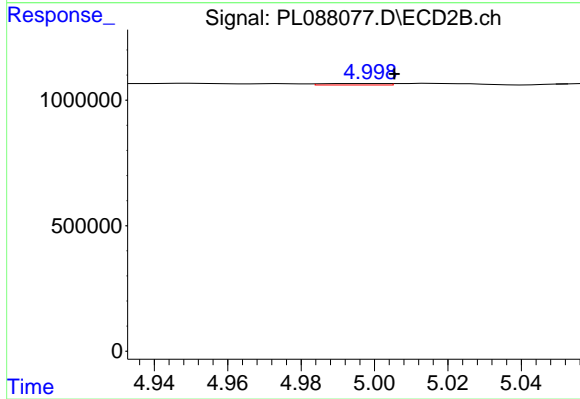
#8 Heptachlor epoxide
 R.T.: 5.573 min
 Delta R.T.: 0.000 min
 Response: 1562720
 Conc: 0.41 ng/ml



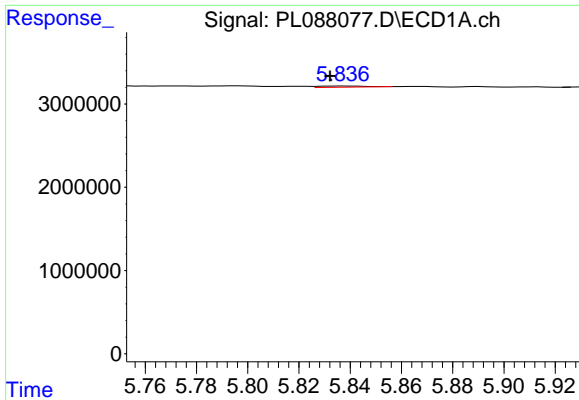
#8 Heptachlor epoxide
 R.T.: 4.635 min
 Delta R.T.: 0.000 min
 Response: 62606
 Conc: 0.04 ng/ml



#9 Endosulfan I
 R.T.: 0.000 min
 Exp R.T. : 5.960 min
 Response: 0
 Conc: N.D.

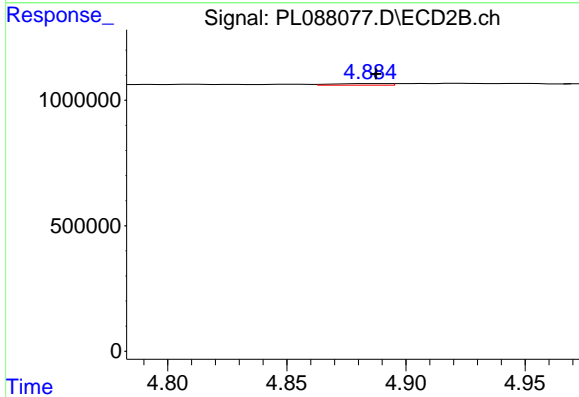


#9 Endosulfan I
 R.T.: 4.999 min
 Delta R.T.: -0.007 min
 Response: 67882
 Conc: 0.05 ng/ml



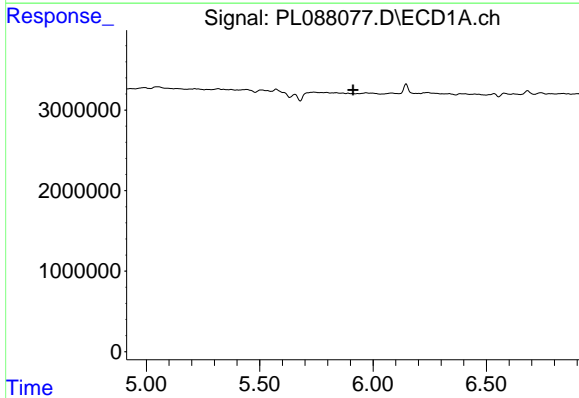
#10 gamma-Chlordane

R.T.: 5.838 min
 Delta R.T.: 0.006 min
 Response: 170289
 Conc: 0.05 ng/ml



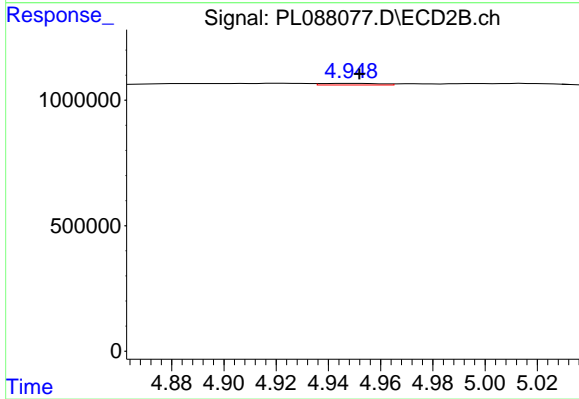
#10 gamma-Chlordane

R.T.: 4.886 min
 Delta R.T.: -0.002 min
 Response: 102982
 Conc: 0.07 ng/ml



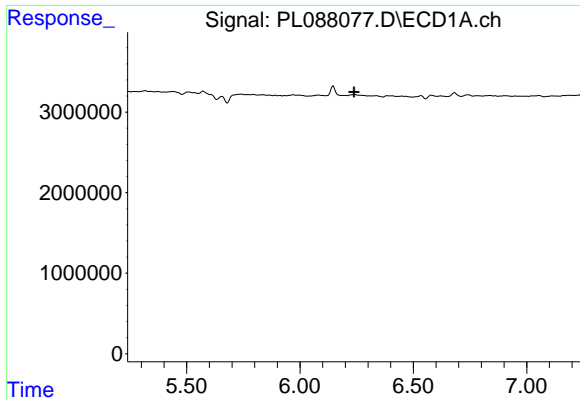
#11 alpha-Chlordane

R.T.: 0.000 min
 Exp R.T. : 5.912 min
 Response: 0
 Conc: N.D.



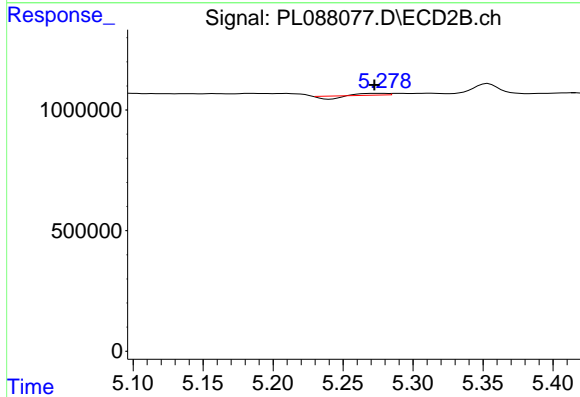
#11 alpha-Chlordane

R.T.: 4.950 min
 Delta R.T.: -0.002 min
 Response: 106689
 Conc: 0.07 ng/ml



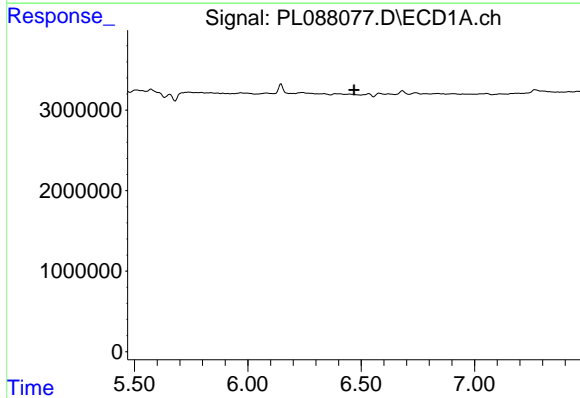
#13 Dieldrin

R.T.: 0.000 min
 Exp R.T. : 6.239 min
 Response: 0
 Conc: N.D.



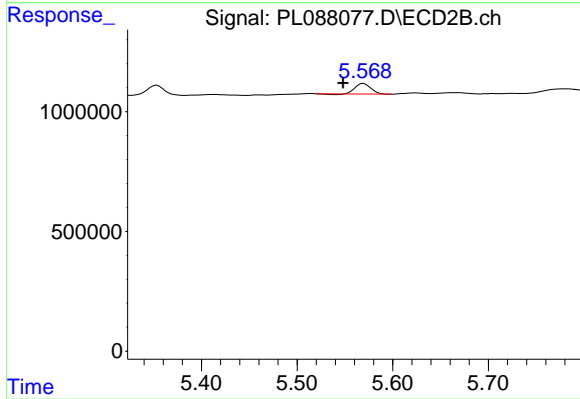
#13 Dieldrin

R.T.: 5.279 min
 Delta R.T.: 0.006 min
 Response: 3563
 Conc: 0.00 ng/ml



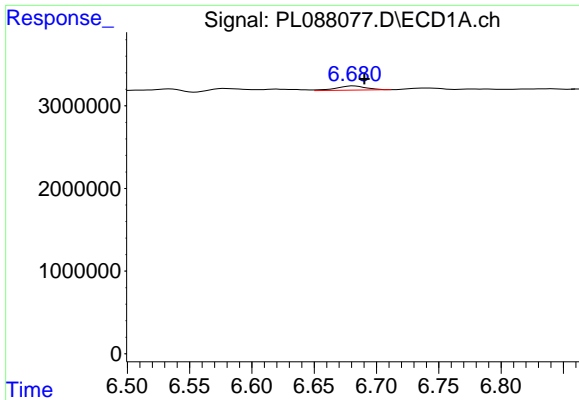
#14 Endrin

R.T.: 0.000 min
 Exp R.T. : 6.468 min
 Response: 0
 Conc: N.D.

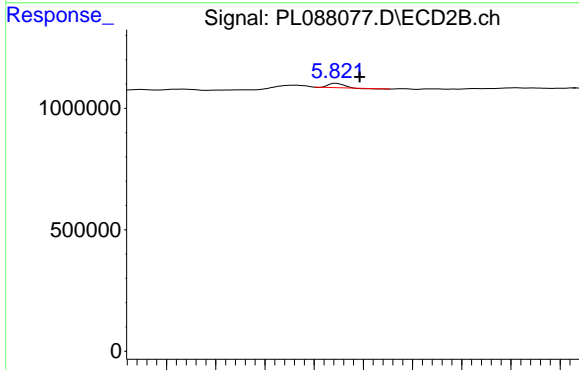


#14 Endrin

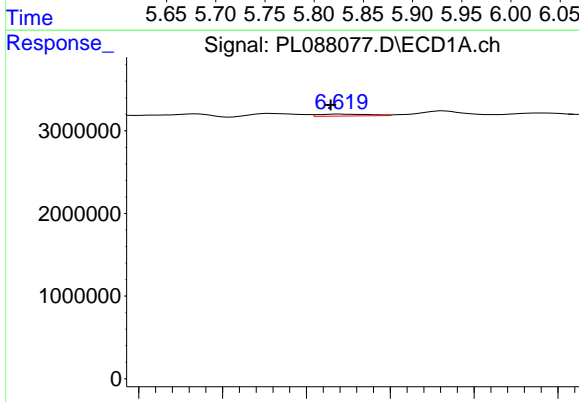
R.T.: 5.570 min
 Delta R.T.: 0.022 min
 Response: 492874
 Conc: 0.36 ng/ml



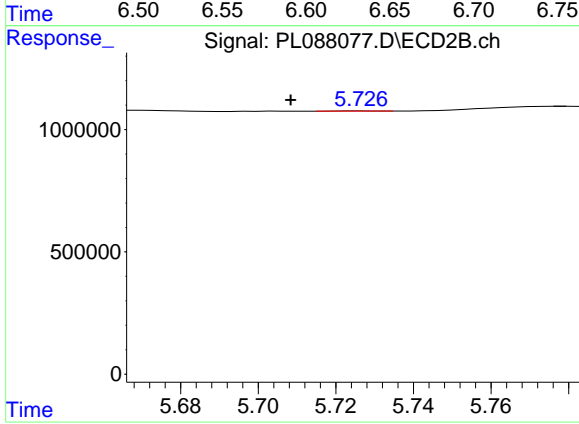
#15 Endosulfan II
 R.T.: 6.682 min
 Delta R.T.: -0.009 min
 Response: 869377
 Conc: 0.29 ng/ml



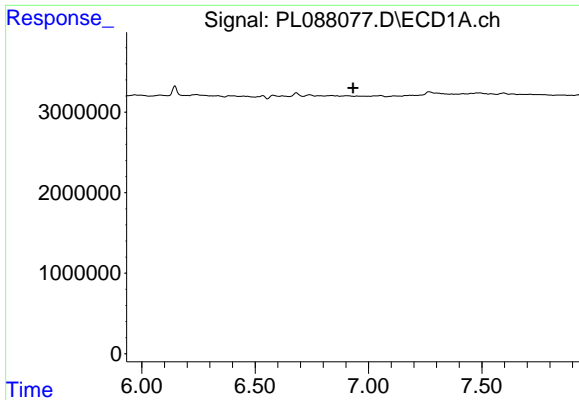
#15 Endosulfan II
 R.T.: 5.822 min
 Delta R.T.: -0.024 min
 Response: 176071
 Conc: 0.14 ng/ml



#16 4,4'-DDD
 R.T.: 6.620 min
 Delta R.T.: 0.006 min
 Response: 503107
 Conc: 0.21 ng/ml

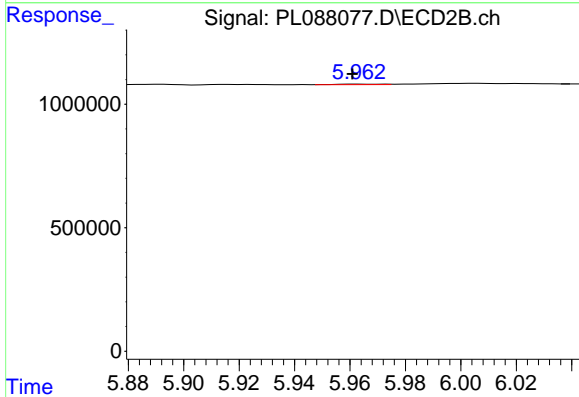


#16 4,4'-DDD
 R.T.: 5.727 min
 Delta R.T.: 0.019 min
 Response: 4598
 Conc: 0.00 ng/ml



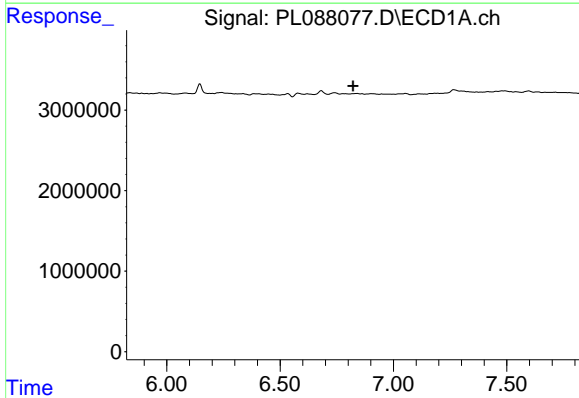
#17 4,4'-DDT

R.T.: 0.000 min
 Exp R.T. : 6.932 min
 Response: 0
 Conc: N.D.



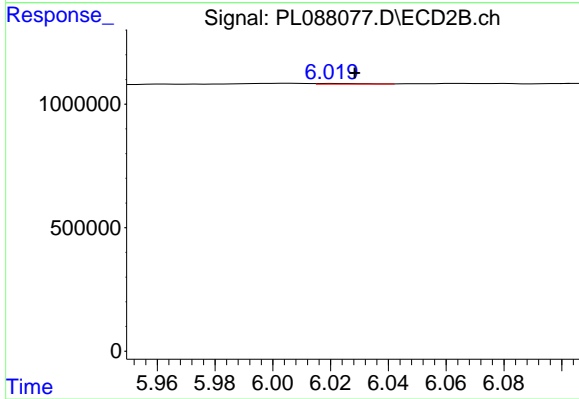
#17 4,4'-DDT

R.T.: 5.964 min
 Delta R.T.: 0.003 min
 Response: 22445
 Conc: 0.02 ng/ml



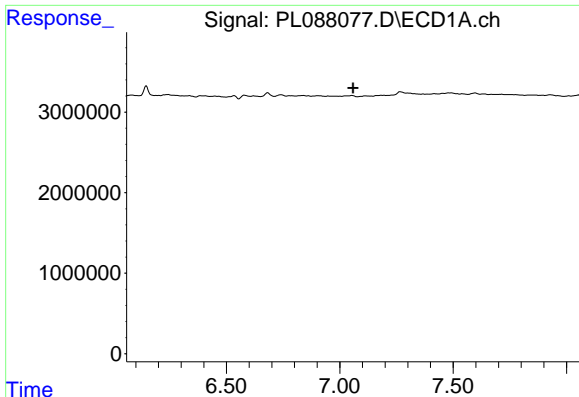
#18 Endrin aldehyde

R.T.: 0.000 min
 Exp R.T. : 6.822 min
 Response: 0
 Conc: N.D.



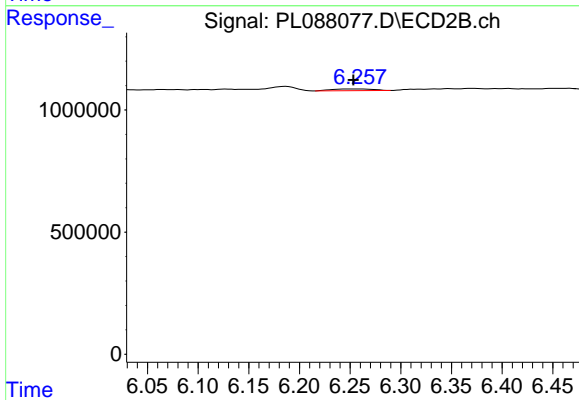
#18 Endrin aldehyde

R.T.: 6.021 min
 Delta R.T.: -0.007 min
 Response: 36381
 Conc: 0.04 ng/ml



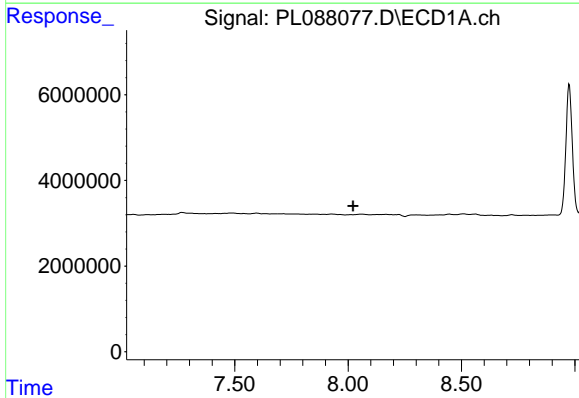
#19 Endosulfan Sulfate

R.T.: 0.000 min
 Exp R.T. : 7.059 min
 Response: 0
 Conc: N.D.



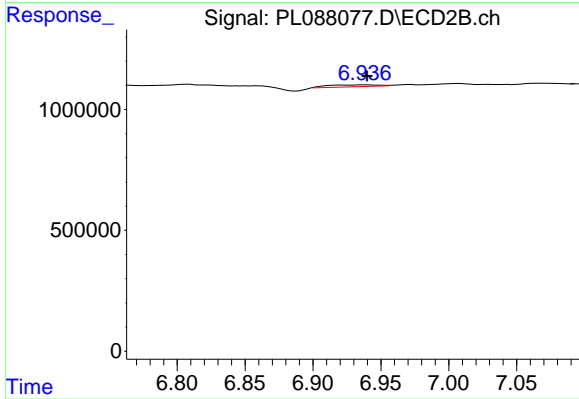
#19 Endosulfan Sulfate

R.T.: 6.259 min
 Delta R.T.: 0.006 min
 Response: 200688
 Conc: 0.16 ng/ml



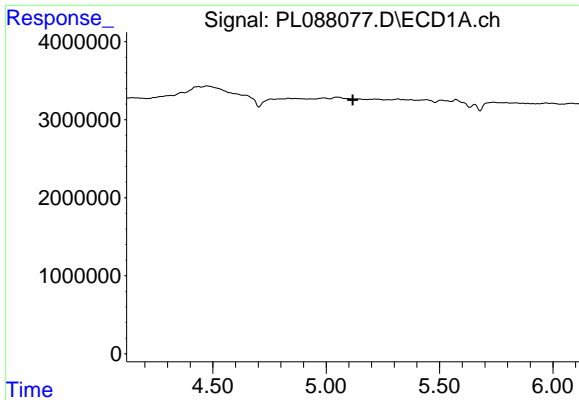
#22 Mirex

R.T.: 0.000 min
 Exp R.T. : 8.022 min
 Response: 0
 Conc: N.D.



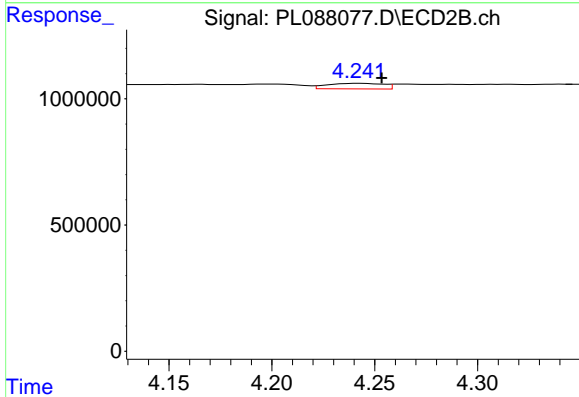
#22 Mirex

R.T.: 6.938 min
 Delta R.T.: -0.001 min
 Response: 200964
 Conc: 0.16 ng/ml



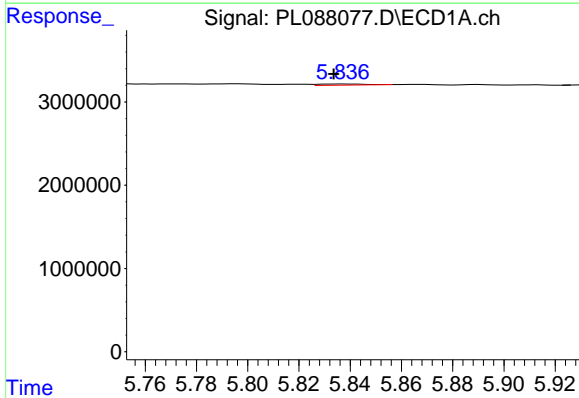
#24 Chlordane-2

R.T.: 0.000 min
 Exp R.T.: 5.118 min
 Response: 0
 Conc: N.D.



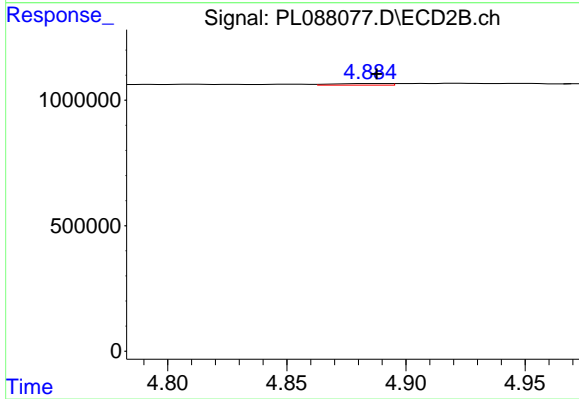
#24 Chlordane-2

R.T.: 4.243 min
 Delta R.T.: -0.011 min
 Response: 420355
 Conc: 6.99 ng/ml



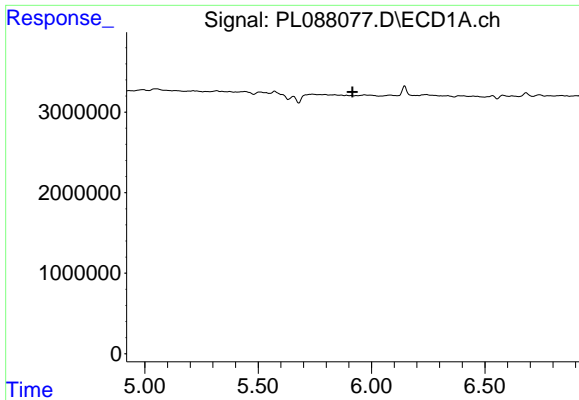
#25 Chlordane-3

R.T.: 5.838 min
 Delta R.T.: 0.004 min
 Response: 170289
 Conc: 0.32 ng/ml



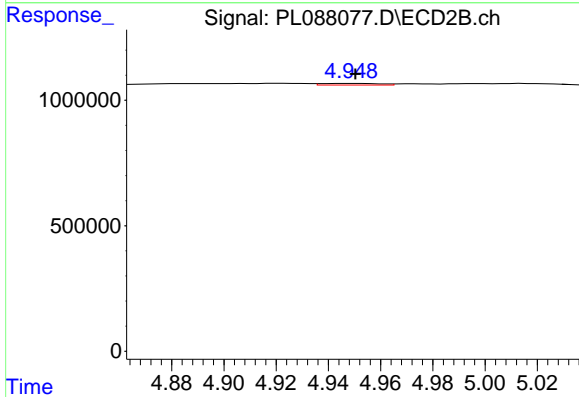
#25 Chlordane-3

R.T.: 4.886 min
 Delta R.T.: -0.002 min
 Response: 102982
 Conc: 0.65 ng/ml



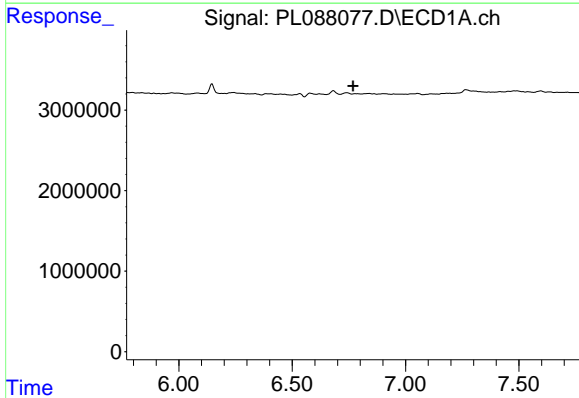
#26 Chlordane-4

R.T.: 0.000 min
 Exp R.T. : 5.917 min
 Response: 0
 Conc: N.D.



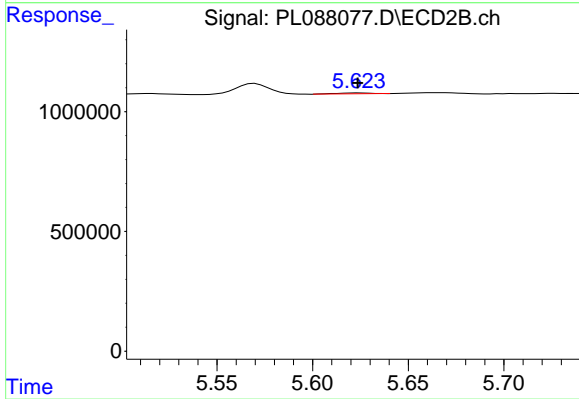
#26 Chlordane-4

R.T.: 4.950 min
 Delta R.T.: 0.000 min
 Response: 106689
 Conc: 0.64 ng/ml



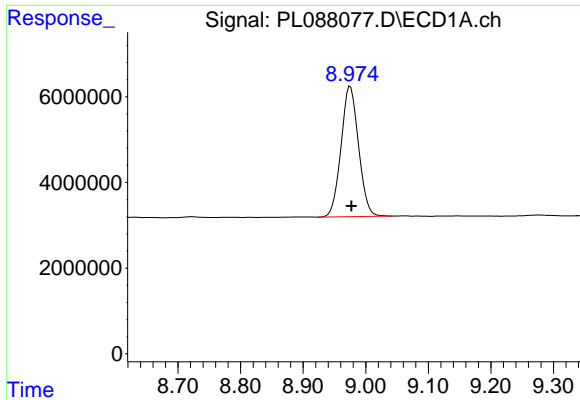
#27 Chlordane-5

R.T.: 0.000 min
 Exp R.T. : 6.769 min
 Response: 0
 Conc: N.D.



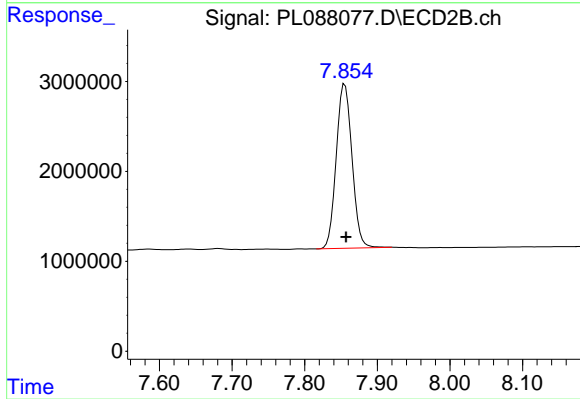
#27 Chlordane-5

R.T.: 5.624 min
 Delta R.T.: 0.000 min
 Response: 45915
 Conc: 1.01 ng/ml



#28 Decachlorobiphenyl

R.T.: 8.975 min
Delta R.T.: -0.002 min
Response: 59275959
Conc: 22.12 ng/ml



#28 Decachlorobiphenyl

R.T.: 7.855 min
Delta R.T.: -0.002 min
Response: 27571253
Conc: 22.67 ng/ml