

Data Path : Z:\pestpcbsrv\HPCHEM1\ECD\_L\Data\PL013120\  
 Data File : PL056263.D  
 Signal(s) : Signal #1: ECD1A.ch Signal #2: ECD2B.ch  
 Acq On : 31 Jan 2020 20:48  
 Operator : AJ\MA  
 Sample : PB126506BL  
 Misc :  
 ALS Vial : 33 Sample Multiplier: 1

Instrument :  
 ECD\_L  
 ClientSampleID :  
 PB126506BL

Integration File signal 1: autoint1.e  
 Integration File signal 2: autoint2.e  
 Quant Time: Jan 31 22:17:45 2020  
 Quant Method : Z:\pestpcbsrv\HPCHEM1\ECD\_L\methods\PL012820.M  
 Quant Title : GC Extractables  
 QLast Update : Tue Jan 28 13:10:37 2020  
 Response via : Initial Calibration  
 Integrator: ChemStation

Volume Inj. : 1 µl  
 Signal #1 Phase : ZB-MR2 Signal #2 Phase: ZB-MR1  
 Signal #1 Info : 30M x 0.32mm x0.2 Signal #2 Info : 30M x 0.32mm x0.5µm

| Compound                    | RT#1  | RT#2  | Resp#1  | Resp#2   | ng/ml  | ng/ml  |
|-----------------------------|-------|-------|---------|----------|--------|--------|
| -----                       |       |       |         |          |        |        |
| System Monitoring Compounds |       |       |         |          |        |        |
| 1) SA Tetrachlo...          | 3.497 | 4.015 | 206.1E6 | 60402159 | 19.682 | 20.657 |
| 28) SA Decachlor...         | 8.251 | 9.089 | 169.0E6 | 40370390 | 16.053 | 17.848 |

Target Compounds

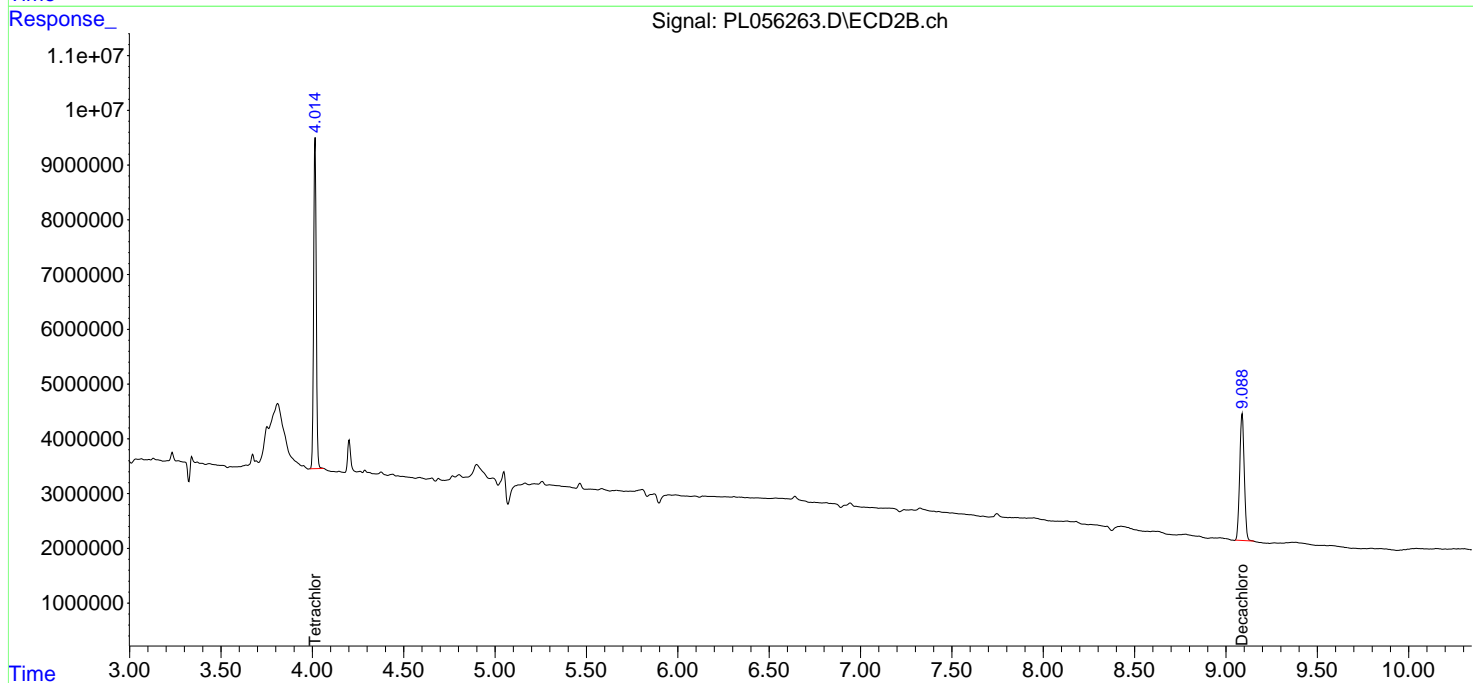
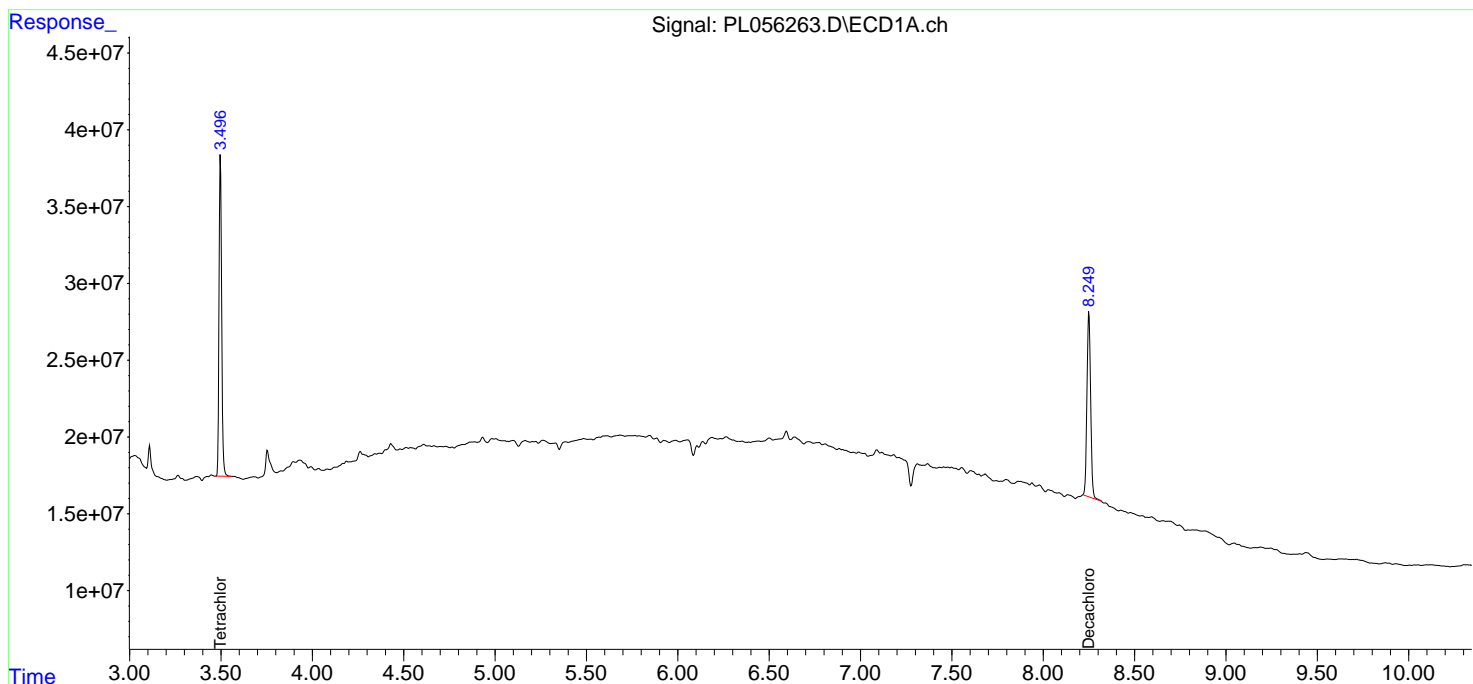
(f)=RT Delta > 1/2 Window (#)=Amounts differ by > 25% (m)=manual int.

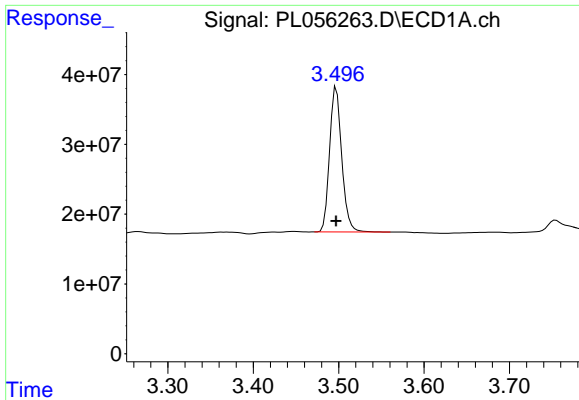
Data Path : Z:\pestpcbsrv\HPCHEM1\ECD\_L\Data\PL013120\  
 Data File : PL056263.D  
 Signal(s) : Signal #1: ECD1A.ch Signal #2: ECD2B.ch  
 Acq On : 31 Jan 2020 20:48  
 Operator : AJ\MA  
 Sample : PB126506BL  
 Misc :  
 ALS Vial : 33 Sample Multiplier: 1

Instrument :  
 ECD\_L  
 ClientSampled :  
 PB126506BL

Integration File signal 1: autoint1.e  
 Integration File signal 2: autoint2.e  
 Quant Time: Jan 31 22:17:45 2020  
 Quant Method : Z:\pestpcbsrv\HPCHEM1\ECD\_L\methods\PL012820.M  
 Quant Title : GC Extractables  
 QLast Update : Tue Jan 28 13:10:37 2020  
 Response via : Initial Calibration  
 Integrator: ChemStation

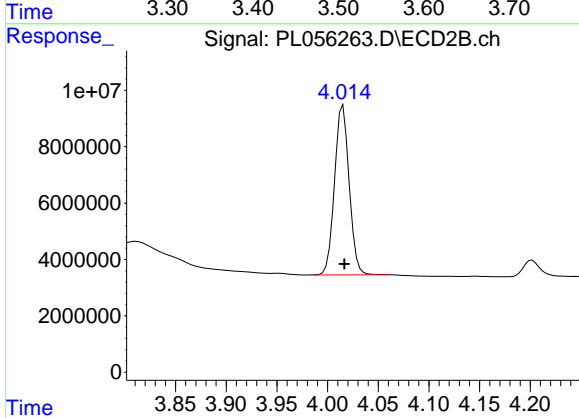
Volume Inj. : 1 µl  
 Signal #1 Phase : ZB-MR2 Signal #2 Phase: ZB-MR1  
 Signal #1 Info : 30M x 0.32mm x0.2 Signal #2 Info : 30M x 0.32mm x0.5µm



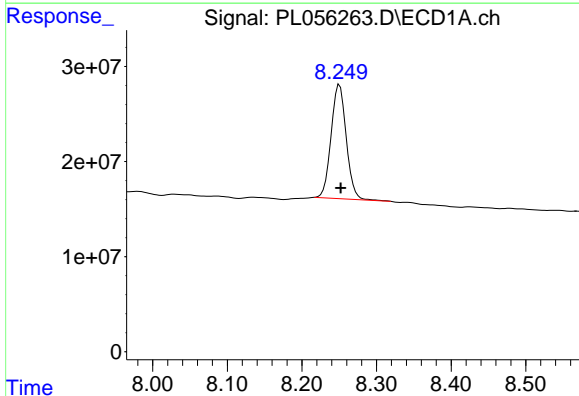


#1 Tetrachloro-m-xylene  
 R.T.: 3.497 min  
 Delta R.T.: 0.000 min  
 Response: 206130180  
 Conc: 19.68 ng/ml

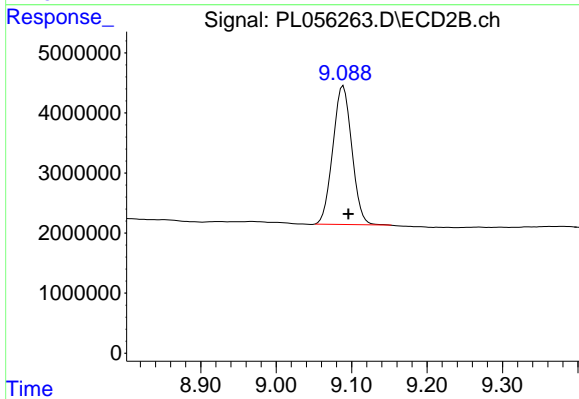
Instrument :  
 ECD\_L  
 ClientSampled :  
 PB126506BL



#1 Tetrachloro-m-xylene  
 R.T.: 4.015 min  
 Delta R.T.: -0.001 min  
 Response: 60402159  
 Conc: 20.66 ng/ml



#28 Decachlorobiphenyl  
 R.T.: 8.251 min  
 Delta R.T.: -0.002 min  
 Response: 169009321  
 Conc: 16.05 ng/ml



#28 Decachlorobiphenyl  
 R.T.: 9.089 min  
 Delta R.T.: -0.007 min  
 Response: 40370390  
 Conc: 17.85 ng/ml