

Data Path : Z:\pestpcbsrv\HPCHEM1\ECD\_L\Data\PL013123\  
 Data File : PL080641.D  
 Signal(s) : Signal #1: ECD1A.ch Signal #2: ECD2B.ch  
 Acq On : 31 Jan 2023 18:54  
 Operator : AR\AJ  
 Sample : 01348-01MS  
 Misc :  
 ALS Vial : 31 Sample Multiplier: 1

Instrument :  
 ECD\_L  
 ClientSampleId :

Integration File signal 1: autoint1.e  
 Integration File signal 2: autoint2.e  
 Quant Time: Jan 31 20:57:58 2023  
 Quant Method : Z:\pestpcbsrv\HPCHEM1\ECD\_L\methods\PL012023.M  
 Quant Title : GC Extractables  
 QLast Update : Sun Jan 22 23:56:48 2023  
 Response via : Initial Calibration  
 Integrator: ChemStation

Volume Inj. : 1 µl  
 Signal #1 Phase : ZB-MR2 Signal #2 Phase: ZB-MR1  
 Signal #1 Info : 30M x 0.32mm x0.2 Signal #2 Info : 30M x 0.32mm x0.5µm

	Compound	RT#1	RT#2	Resp#1	Resp#2	ng/ml	ng/ml
-----							
System Monitoring Compounds							
1)	SA Tetrachlo...	3.350	2.688	33640813	29187237	15.685	13.288
28)	SA Decachlor...	8.785	7.834	25126255	31980662	14.352	13.423
Target Compounds							
2)	A alpha-BHC	3.799	3.189	139.5E6	137.8E6	44.032	43.330
3)	MA gamma-BHC...	4.127	3.518	128.9E6	128.5E6	43.834	43.001
4)	MA Heptachlor	4.711	3.858	126.3E6	134.3E6	42.741	42.197
5)	MB Aldrin	5.049	4.137	121.1E6	130.4E6	44.261	44.211
6)	B beta-BHC	4.323	3.813	55586947	55728798	40.722	41.756
7)	B delta-BHC	4.566	4.043	130.6E6	127.0E6	45.101	44.045
8)	B Heptachlo...	5.473	4.639	110.7E6	118.3E6	42.809	42.521
9)	A Endosulfan I	5.855	5.009	101.2E6	105.6E6	42.850	40.586
10)	B gamma-Chl...	5.728	4.890	110.8E6	115.6E6	43.870	40.796
11)	B alpha-Chl...	5.807	4.954	109.6E6	117.6E6	43.410	41.038
12)	B 4,4'-DDE	5.985	5.147	94827373	100.0E6	42.574	42.410
13)	MA Dieldrin	6.129	5.274	107.1E6	115.4E6	44.758	42.646
14)	MA Endrin	6.356	5.548	94931940	110.4E6	43.895	47.556
15)	B Endosulfa...	6.576	5.842	78326855	100.4E6	34.169	48.195 #
16)	A 4,4'-DDD	6.499	5.701	80059687	80266333	43.701	42.713
17)	MA 4,4'-DDT	6.812	5.952	82231873	88405251	39.579	42.068
18)	B Endrin al...	6.704	6.022	76944317	84666266	46.257	46.364
19)	B Endosulfa...	6.938	6.245	90303514	100.5E6	43.627	43.195
20)	A Methoxychlor	7.290	6.530	47030588	51421655	42.628	42.376
21)	B Endrin ke...	7.418	6.750	95162594	111.5E6	43.131	43.690
22)	Mirex	7.889	6.934	77712214	98917790	45.187	43.447
24)	Chlordane-2	5.049f	4.272	121.1E6	117208	1255.460	1.300 #
25)	Chlordane-3	5.728	4.890	110.8E6	115.6E6	327.906	438.393 #
26)	Chlordane-4	5.807	4.954	109.6E6	117.6E6	253.998	436.548 #
-----							

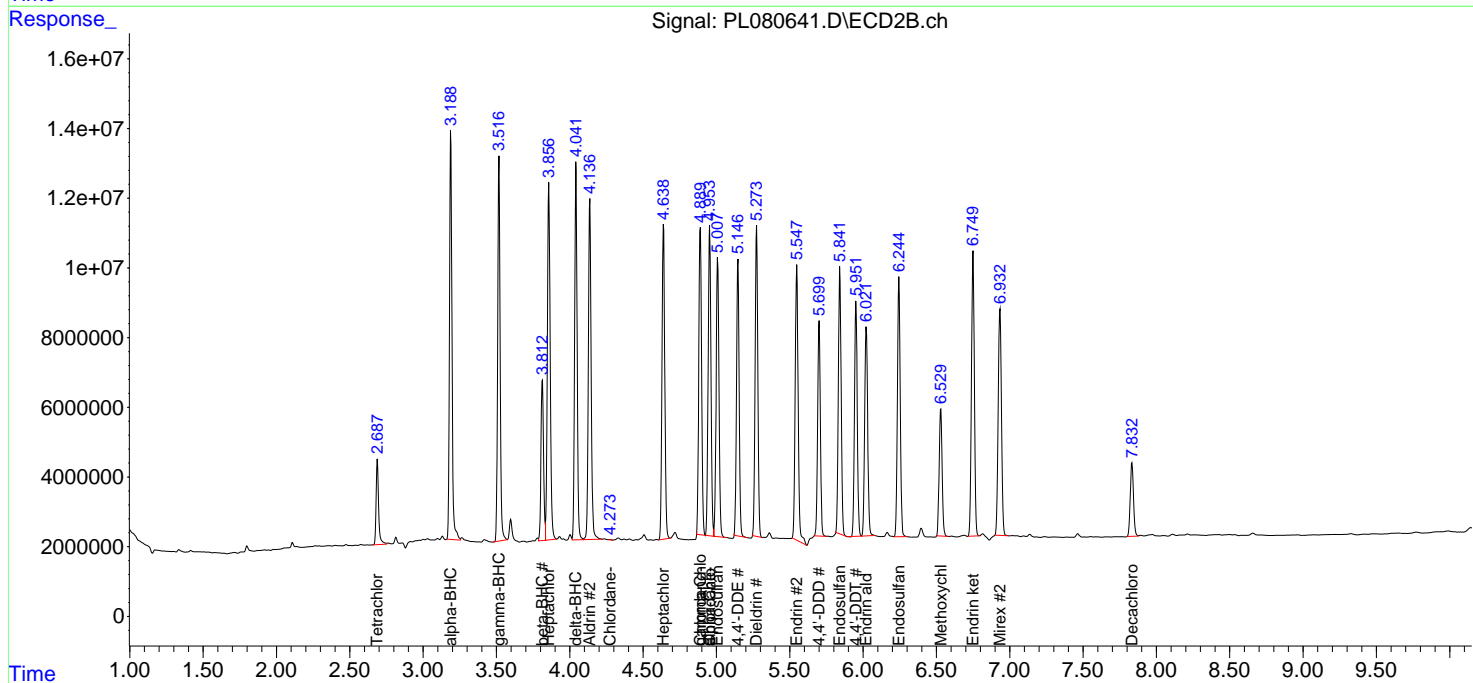
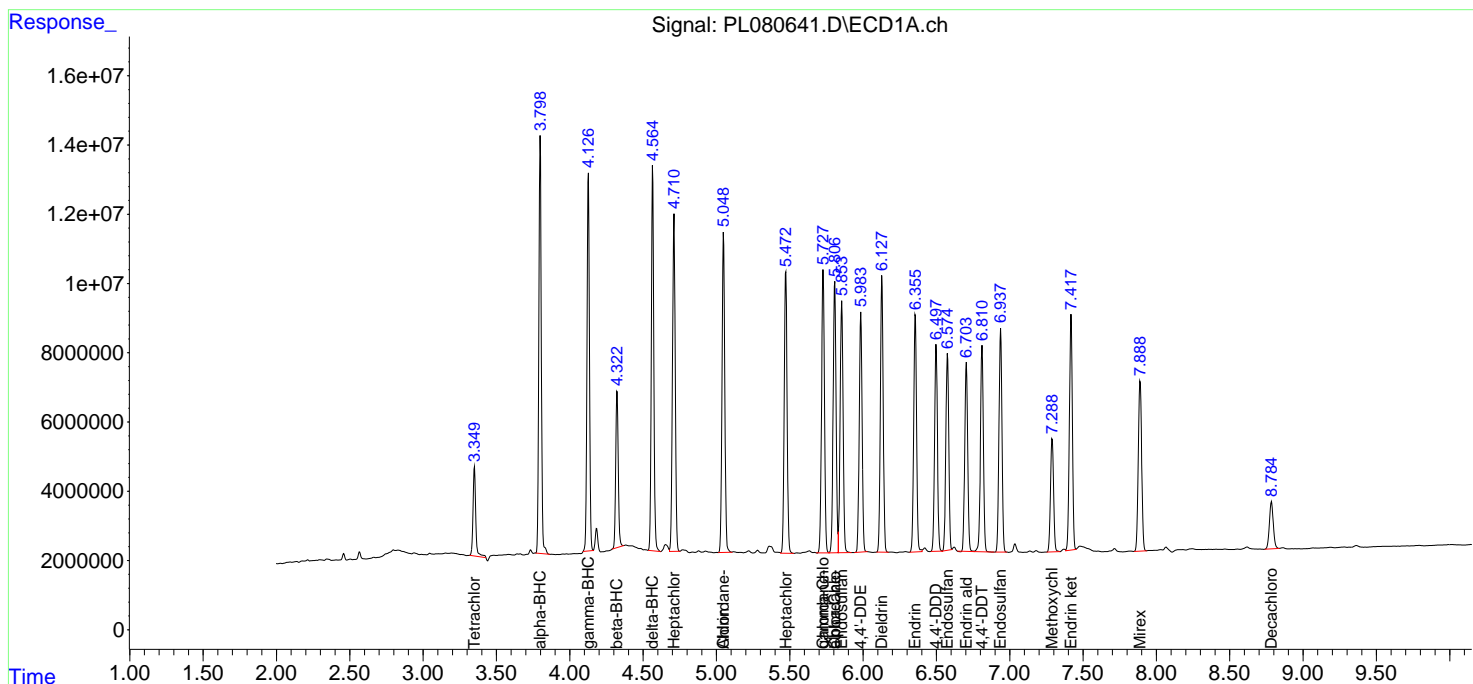
(f)=RT Delta > 1/2 Window (#)=Amounts differ by > 25% (m)=manual int.

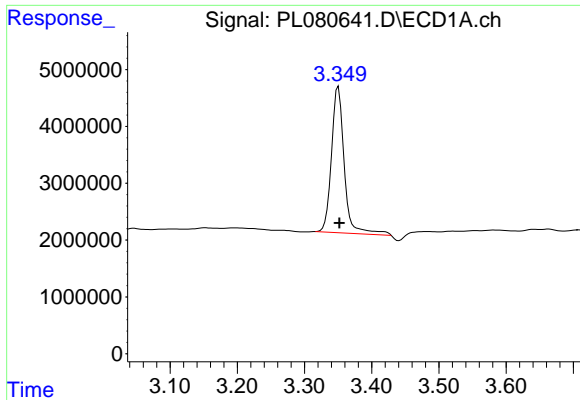
Data Path : Z:\pestpcbsrv\HPCHEM1\ECD\_L\Data\PL013123\  
 Data File : PL080641.D  
 Signal(s) : Signal #1: ECD1A.ch Signal #2: ECD2B.ch  
 Acq On : 31 Jan 2023 18:54  
 Operator : AR\AJ  
 Sample : 01348-01MS  
 Misc :  
 ALS Vial : 31 Sample Multiplier: 1

Instrument :  
 ECD\_L  
 ClientSampleId :

Integration File signal 1: autoint1.e  
 Integration File signal 2: autoint2.e  
 Quant Time: Jan 31 20:57:58 2023  
 Quant Method : Z:\pestpcbsrv\HPCHEM1\ECD\_L\methods\PL012023.M  
 Quant Title : GC Extractables  
 QLast Update : Sun Jan 22 23:56:48 2023  
 Response via : Initial Calibration  
 Integrator: ChemStation

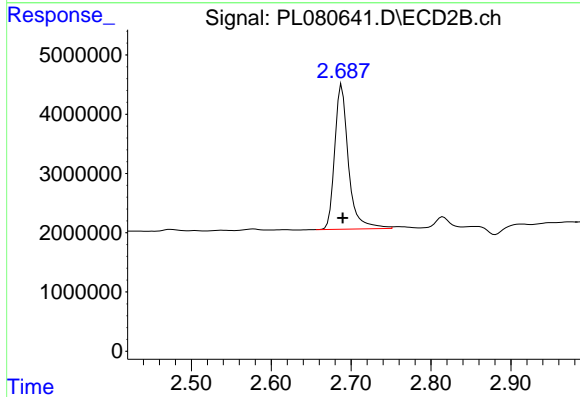
Volume Inj. : 1 µl  
 Signal #1 Phase : ZB-MR2 Signal #2 Phase: ZB-MR1  
 Signal #1 Info : 30M x 0.32mm x0.2 Signal #2 Info : 30M x 0.32mm x0.5µm



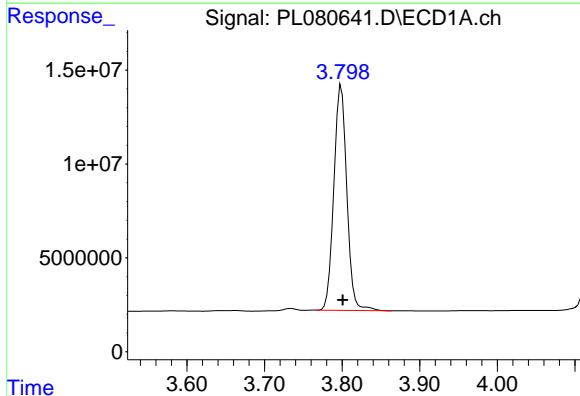


#1 Tetrachloro-m-xylene  
 R.T.: 3.350 min  
 Delta R.T.: -0.002 min  
 Response: 33640813  
 Conc: 15.68 ng/ml

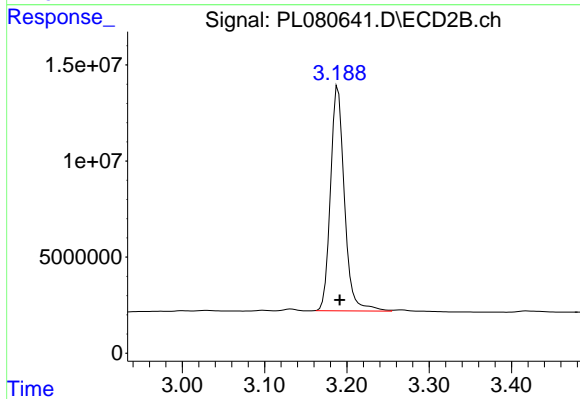
Instrument :  
 ECD\_L  
 ClientSampleId :



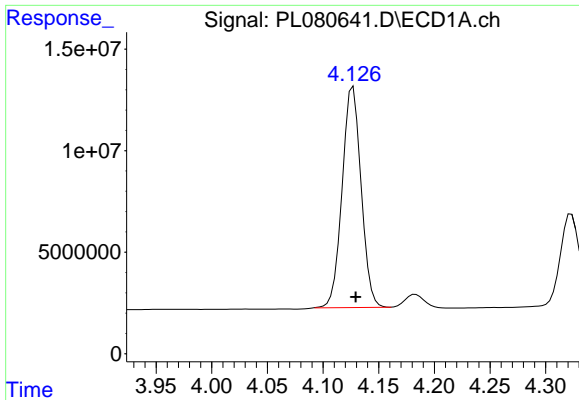
#1 Tetrachloro-m-xylene  
 R.T.: 2.688 min  
 Delta R.T.: -0.001 min  
 Response: 29187237  
 Conc: 13.29 ng/ml



#2 alpha-BHC  
 R.T.: 3.799 min  
 Delta R.T.: -0.002 min  
 Response: 139495585  
 Conc: 44.03 ng/ml

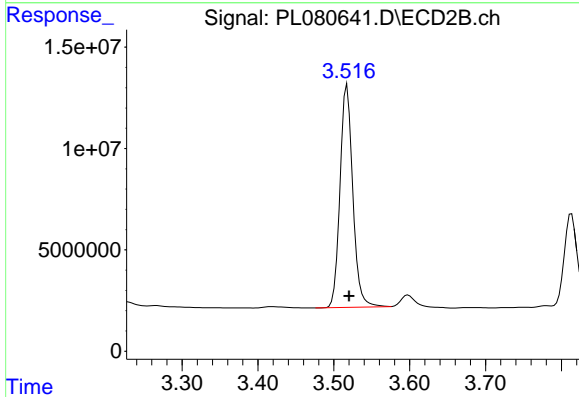


#2 alpha-BHC  
 R.T.: 3.189 min  
 Delta R.T.: -0.002 min  
 Response: 137807084  
 Conc: 43.33 ng/ml

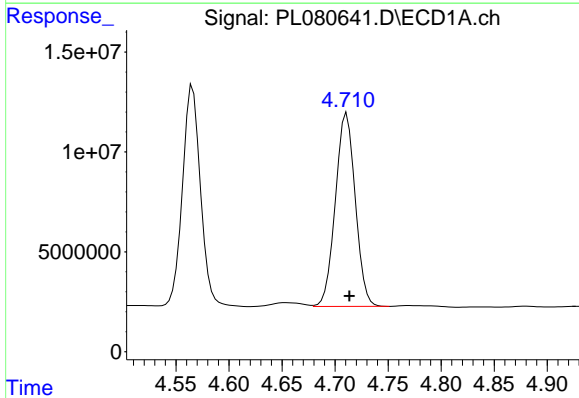


#3 gamma-BHC (Lindane)  
R.T.: 4.127 min  
Delta R.T.: -0.002 min  
Response: 128860984  
Conc: 43.83 ng/ml

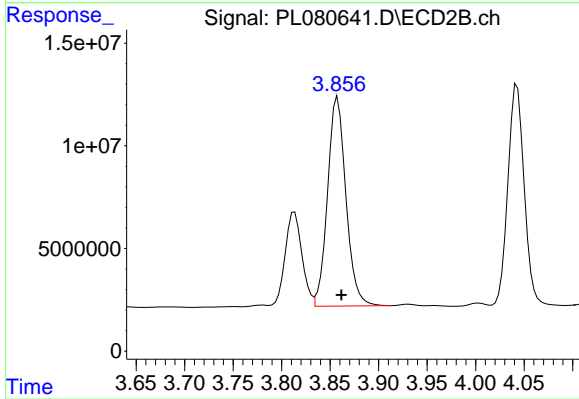
Instrument :  
ECD\_L  
ClientSampleId :



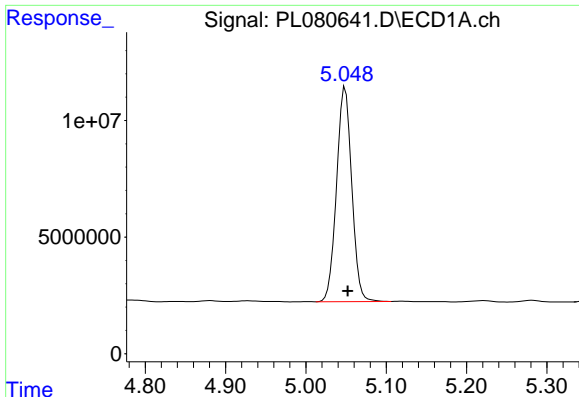
#3 gamma-BHC (Lindane)  
R.T.: 3.518 min  
Delta R.T.: -0.003 min  
Response: 128456841  
Conc: 43.00 ng/ml



#4 Heptachlor  
R.T.: 4.711 min  
Delta R.T.: -0.002 min  
Response: 126308737  
Conc: 42.74 ng/ml



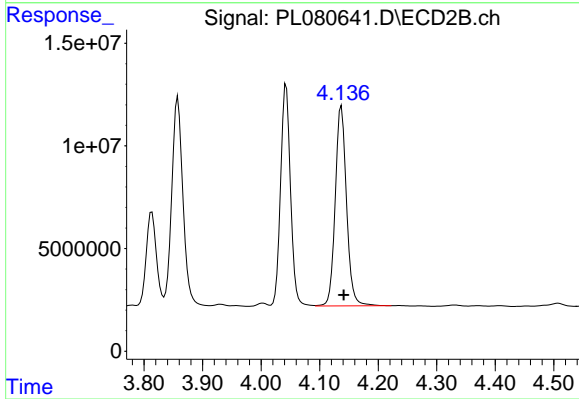
#4 Heptachlor  
R.T.: 3.858 min  
Delta R.T.: -0.004 min  
Response: 134286494  
Conc: 42.20 ng/ml



#5 Aldrin

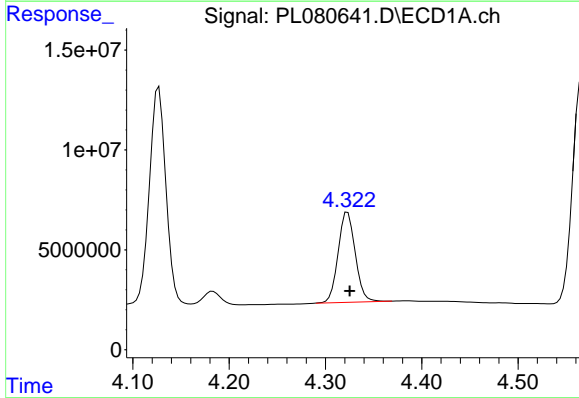
R.T.: 5.049 min  
 Delta R.T.: -0.003 min  
 Response: 121088410  
 Conc: 44.26 ng/ml

Instrument :  
 ECD\_L  
 ClientSampleId :



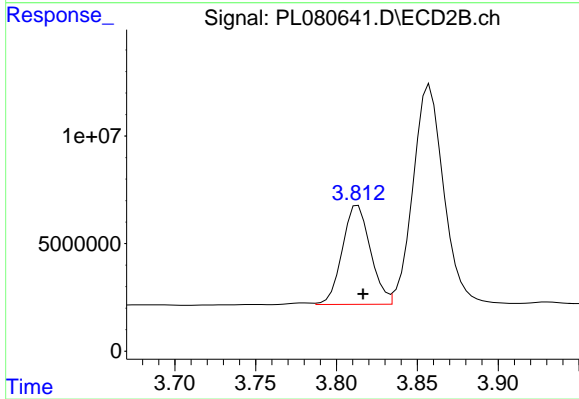
#5 Aldrin

R.T.: 4.137 min  
 Delta R.T.: -0.004 min  
 Response: 130402761  
 Conc: 44.21 ng/ml



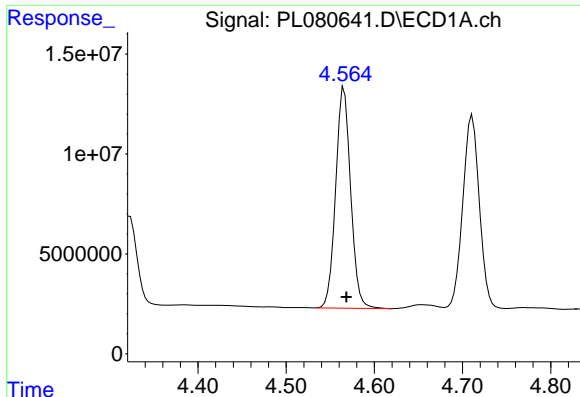
#6 beta-BHC

R.T.: 4.323 min  
 Delta R.T.: -0.002 min  
 Response: 55586947  
 Conc: 40.72 ng/ml



#6 beta-BHC

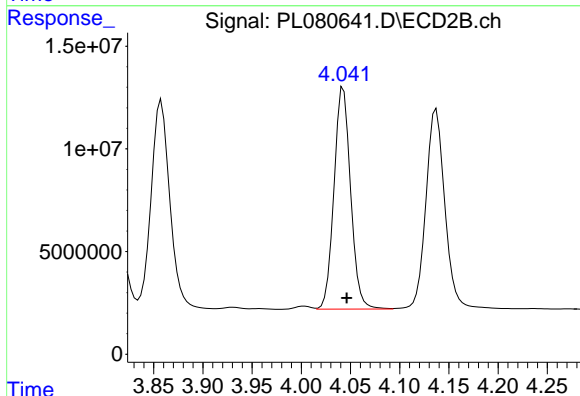
R.T.: 3.813 min  
 Delta R.T.: -0.003 min  
 Response: 55728798  
 Conc: 41.76 ng/ml



#7 delta-BHC

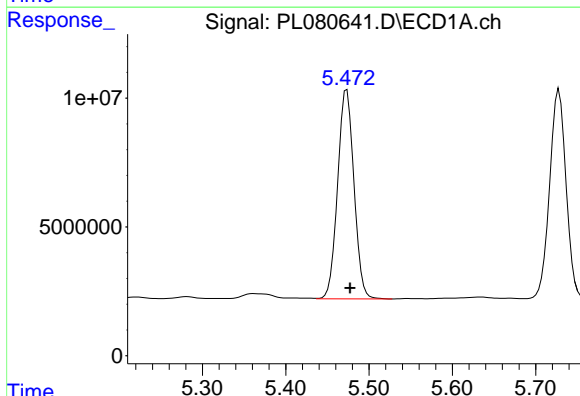
R.T.: 4.566 min  
 Delta R.T.: -0.003 min  
 Response: 130566355  
 Conc: 45.10 ng/ml

Instrument :  
 ECD\_L  
 ClientSampleId :



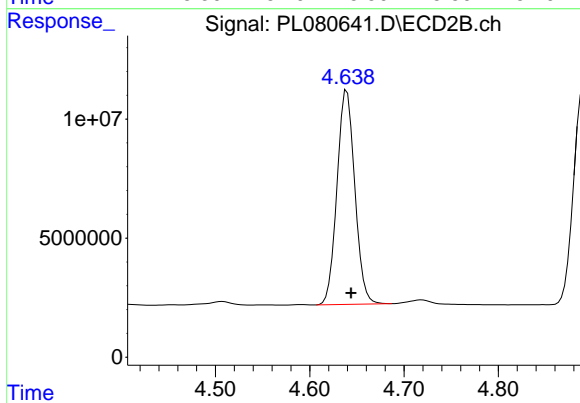
#7 delta-BHC

R.T.: 4.043 min  
 Delta R.T.: -0.004 min  
 Response: 127044716  
 Conc: 44.04 ng/ml



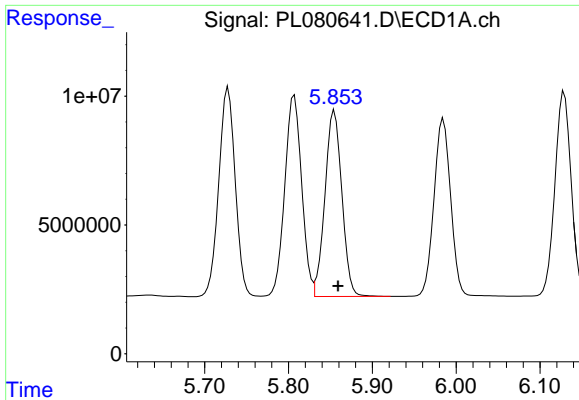
#8 Heptachlor epoxide

R.T.: 5.473 min  
 Delta R.T.: -0.004 min  
 Response: 110748718  
 Conc: 42.81 ng/ml



#8 Heptachlor epoxide

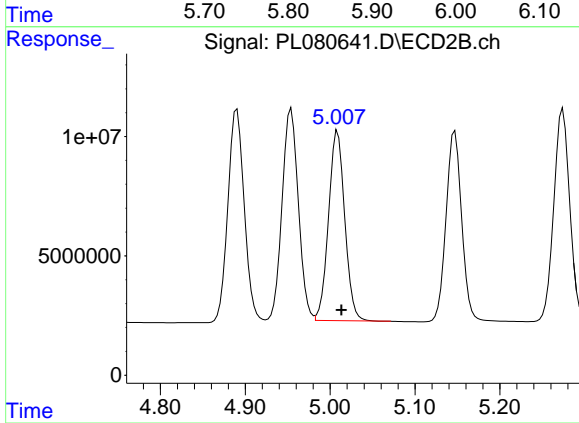
R.T.: 4.639 min  
 Delta R.T.: -0.005 min  
 Response: 118306563  
 Conc: 42.52 ng/ml



#9 Endosulfan I

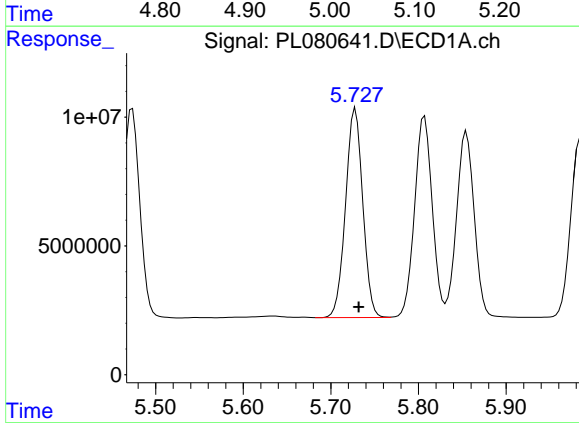
R.T.: 5.855 min  
 Delta R.T.: -0.004 min  
 Response: 101187918  
 Conc: 42.85 ng/ml

Instrument :  
 ECD\_L  
 ClientSampleId :



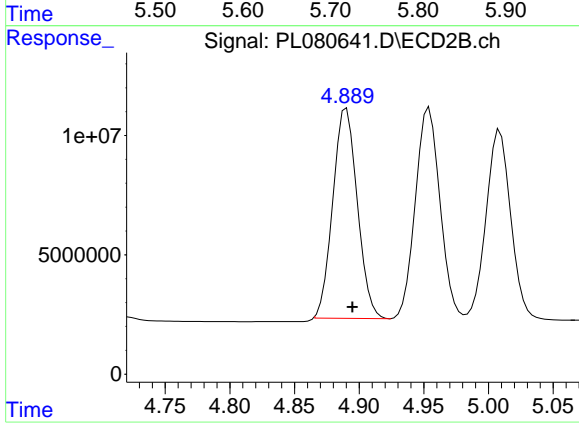
#9 Endosulfan I

R.T.: 5.009 min  
 Delta R.T.: -0.005 min  
 Response: 105578720  
 Conc: 40.59 ng/ml



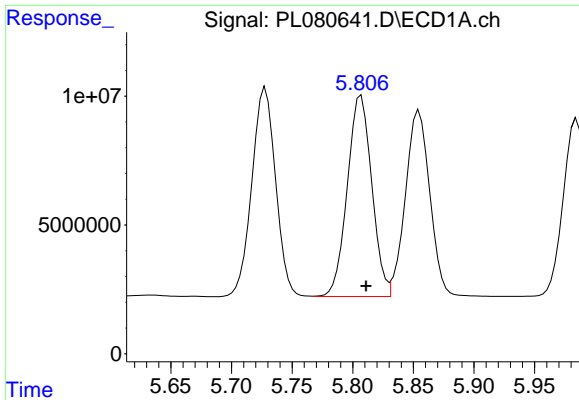
#10 gamma-Chlordane

R.T.: 5.728 min  
 Delta R.T.: -0.004 min  
 Response: 110803008  
 Conc: 43.87 ng/ml



#10 gamma-Chlordane

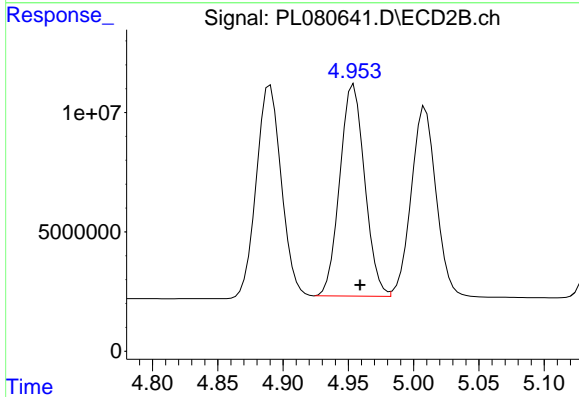
R.T.: 4.890 min  
 Delta R.T.: -0.005 min  
 Response: 115624087  
 Conc: 40.80 ng/ml



#11 alpha-Chlordane

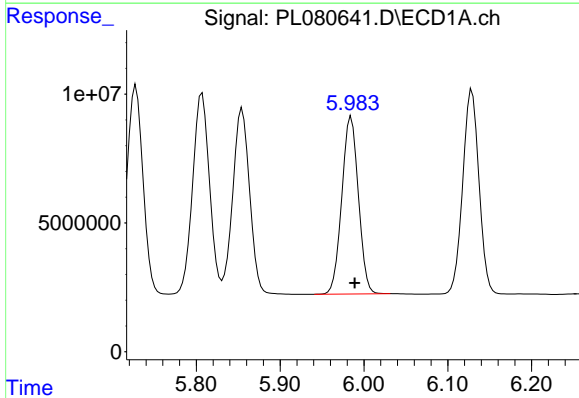
R.T.: 5.807 min  
Delta R.T.: -0.004 min  
Response: 109578714  
Conc: 43.41 ng/ml

Instrument :  
ECD\_L  
ClientSampleId :



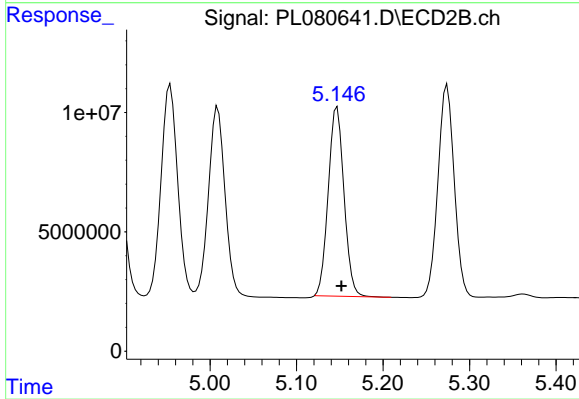
#11 alpha-Chlordane

R.T.: 4.954 min  
Delta R.T.: -0.005 min  
Response: 117561315  
Conc: 41.04 ng/ml



#12 4,4'-DDE

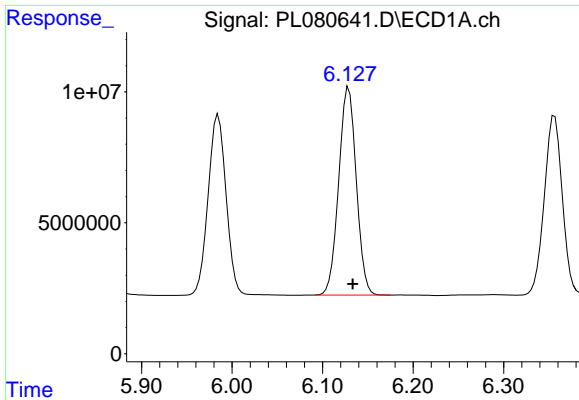
R.T.: 5.985 min  
Delta R.T.: -0.004 min  
Response: 94827373  
Conc: 42.57 ng/ml



#12 4,4'-DDE

R.T.: 5.147 min  
Delta R.T.: -0.005 min  
Response: 100037561  
Conc: 42.41 ng/ml

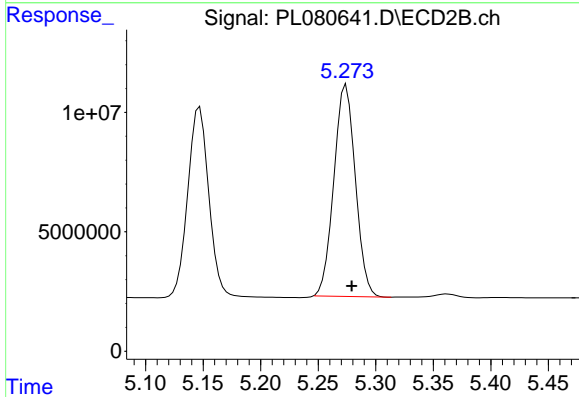




#13 Dieldrin

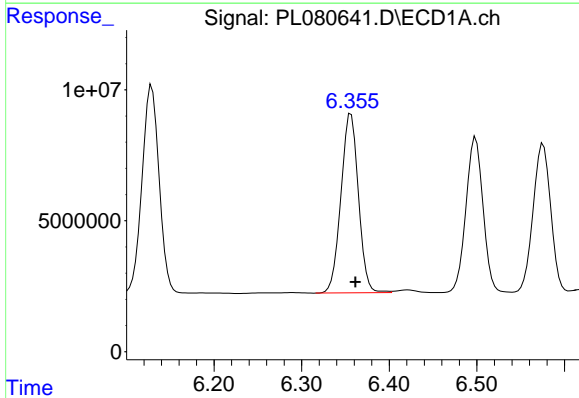
R.T.: 6.129 min  
 Delta R.T.: -0.005 min  
 Response: 107121068  
 Conc: 44.76 ng/ml

Instrument :  
 ECD\_L  
 ClientSampleId :



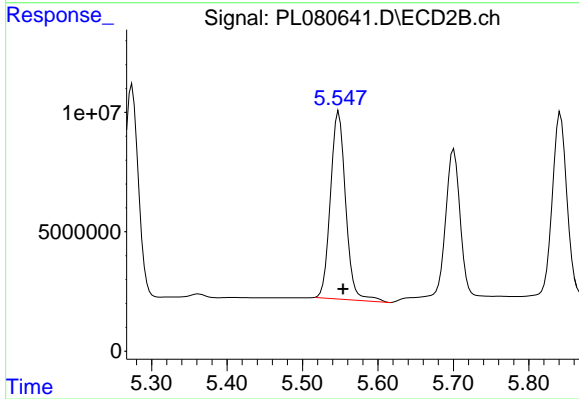
#13 Dieldrin

R.T.: 5.274 min  
 Delta R.T.: -0.005 min  
 Response: 115356358  
 Conc: 42.65 ng/ml



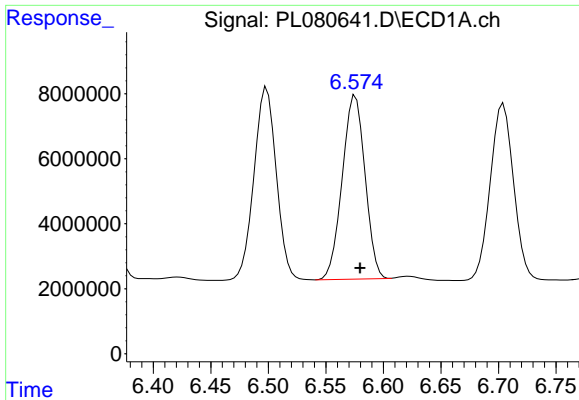
#14 Endrin

R.T.: 6.356 min  
 Delta R.T.: -0.005 min  
 Response: 94931940  
 Conc: 43.90 ng/ml



#14 Endrin

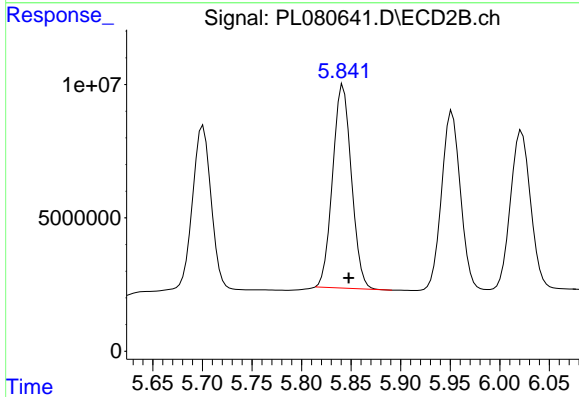
R.T.: 5.548 min  
 Delta R.T.: -0.006 min  
 Response: 110386099  
 Conc: 47.56 ng/ml



#15 Endosulfan II

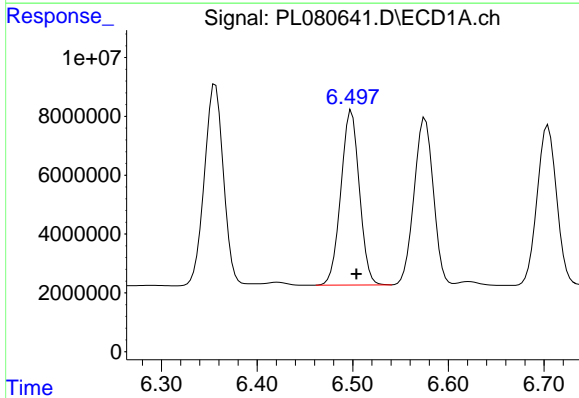
R.T.: 6.576 min  
 Delta R.T.: -0.004 min  
 Response: 78326855  
 Conc: 34.17 ng/ml

Instrument :  
 ECD\_L  
 ClientSampleId :



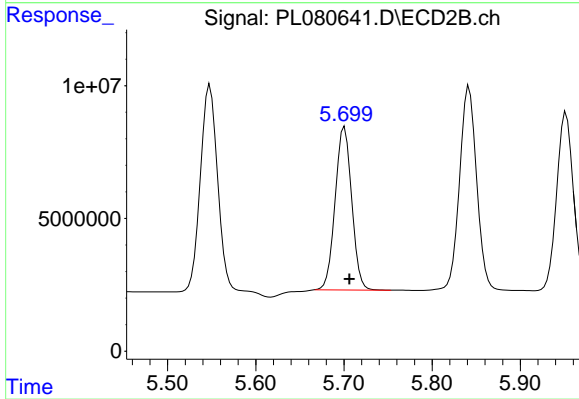
#15 Endosulfan II

R.T.: 5.842 min  
 Delta R.T.: -0.006 min  
 Response: 100424625  
 Conc: 48.19 ng/ml



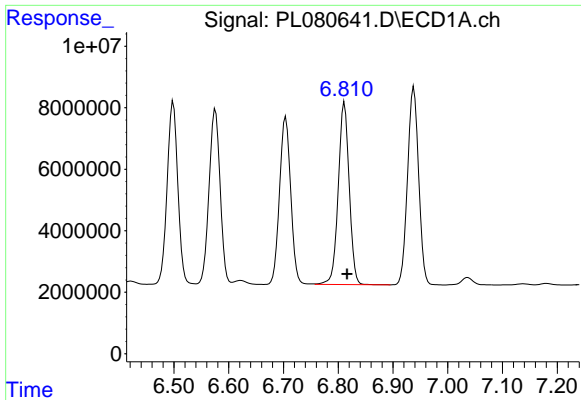
#16 4,4'-DDD

R.T.: 6.499 min  
 Delta R.T.: -0.005 min  
 Response: 80059687  
 Conc: 43.70 ng/ml



#16 4,4'-DDD

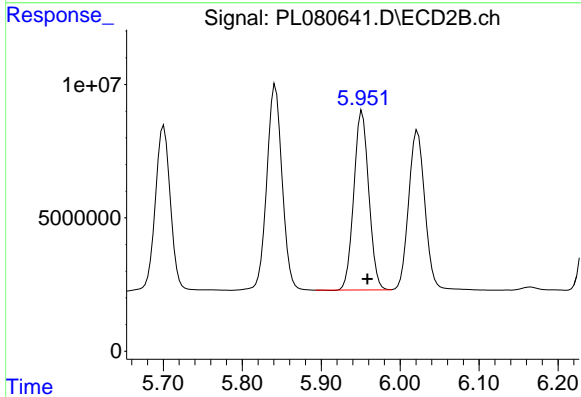
R.T.: 5.701 min  
 Delta R.T.: -0.006 min  
 Response: 80266333  
 Conc: 42.71 ng/ml



#17 4,4'-DDT

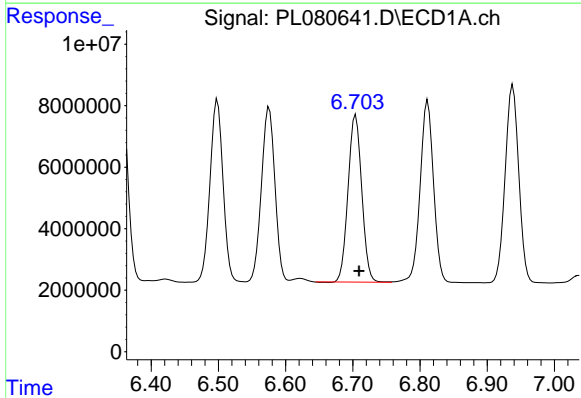
R.T.: 6.812 min  
 Delta R.T.: -0.005 min  
 Response: 82231873  
 Conc: 39.58 ng/ml

Instrument :  
 ECD\_L  
 ClientSampleId :



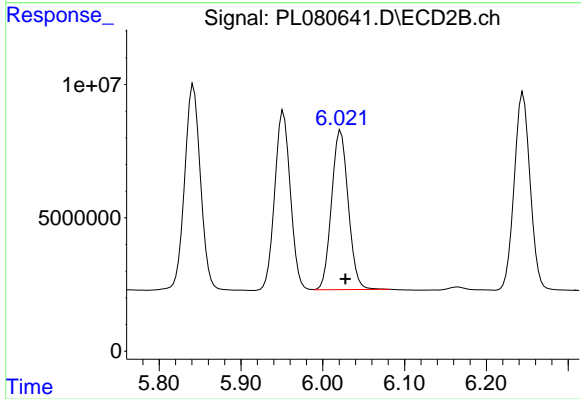
#17 4,4'-DDT

R.T.: 5.952 min  
 Delta R.T.: -0.006 min  
 Response: 88405251  
 Conc: 42.07 ng/ml



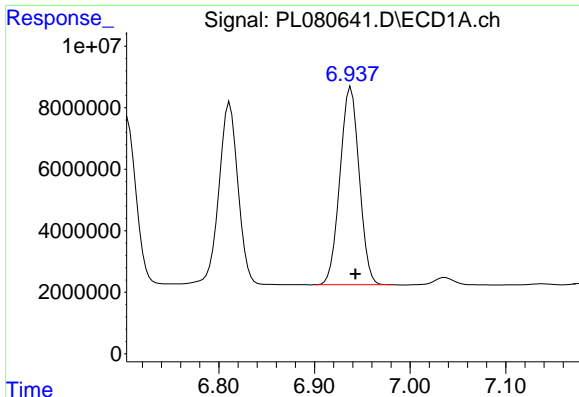
#18 Endrin aldehyde

R.T.: 6.704 min  
 Delta R.T.: -0.005 min  
 Response: 76944317  
 Conc: 46.26 ng/ml



#18 Endrin aldehyde

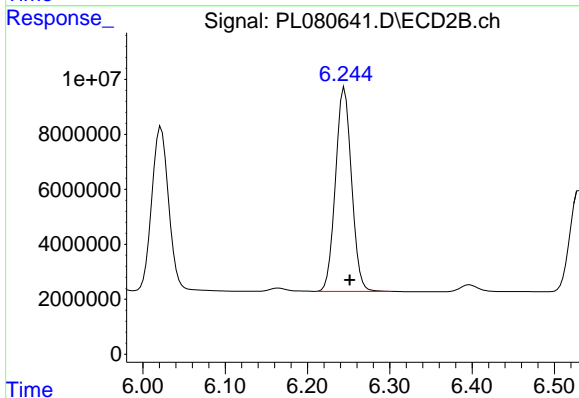
R.T.: 6.022 min  
 Delta R.T.: -0.006 min  
 Response: 84666266  
 Conc: 46.36 ng/ml



#19 Endosulfan Sulfate

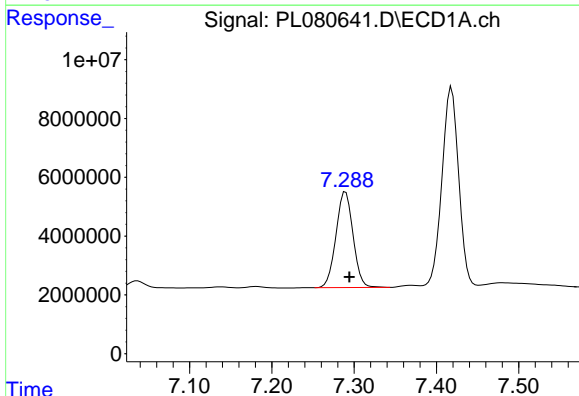
R.T.: 6.938 min  
 Delta R.T.: -0.005 min  
 Response: 90303514  
 Conc: 43.63 ng/ml

Instrument :  
 ECD\_L  
 ClientSampleId :



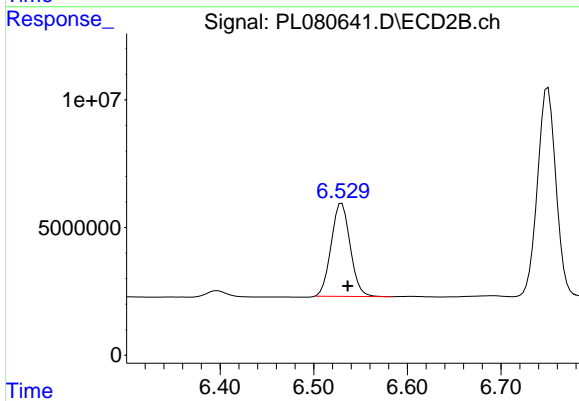
#19 Endosulfan Sulfate

R.T.: 6.245 min  
 Delta R.T.: -0.006 min  
 Response: 100457749  
 Conc: 43.20 ng/ml



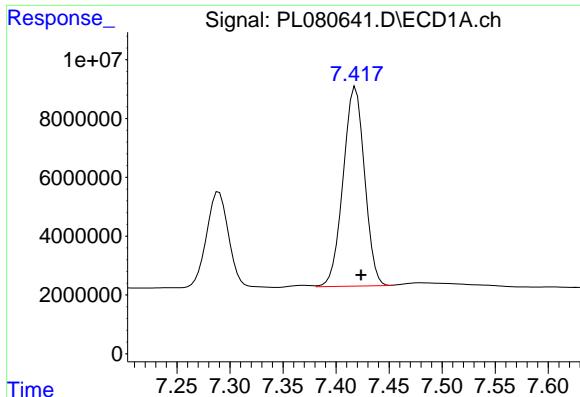
#20 Methoxychlor

R.T.: 7.290 min  
 Delta R.T.: -0.005 min  
 Response: 47030588  
 Conc: 42.63 ng/ml



#20 Methoxychlor

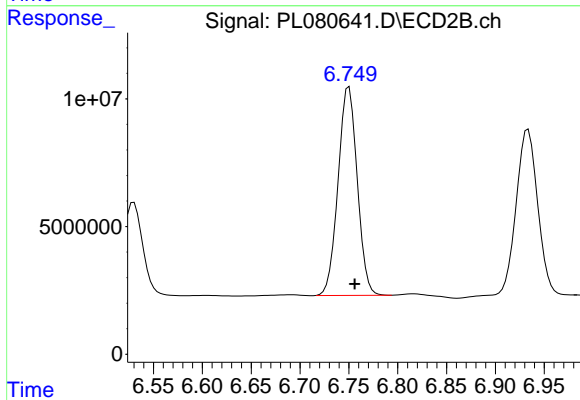
R.T.: 6.530 min  
 Delta R.T.: -0.006 min  
 Response: 51421655  
 Conc: 42.38 ng/ml



#21 Endrin ketone

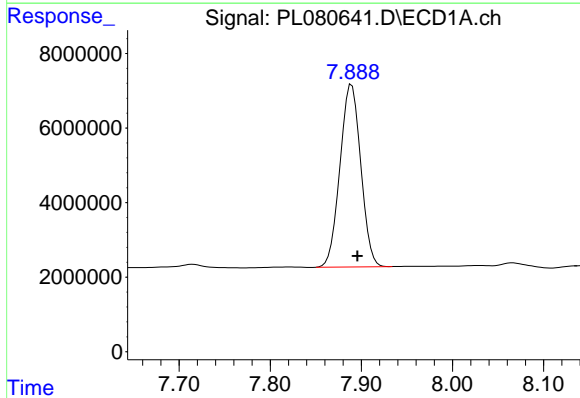
R.T.: 7.418 min  
 Delta R.T.: -0.005 min  
 Response: 95162594  
 Conc: 43.13 ng/ml

Instrument :  
 ECD\_L  
 ClientSampleId :



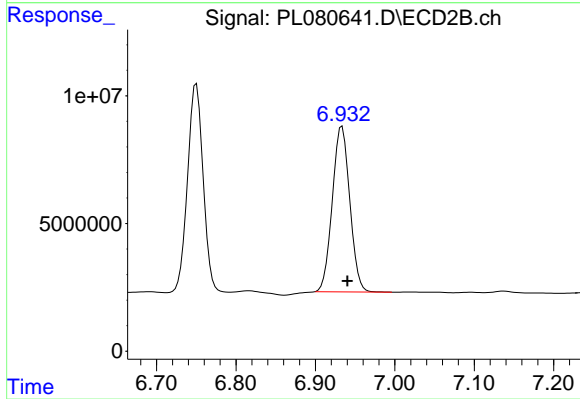
#21 Endrin ketone

R.T.: 6.750 min  
 Delta R.T.: -0.006 min  
 Response: 111549245  
 Conc: 43.69 ng/ml



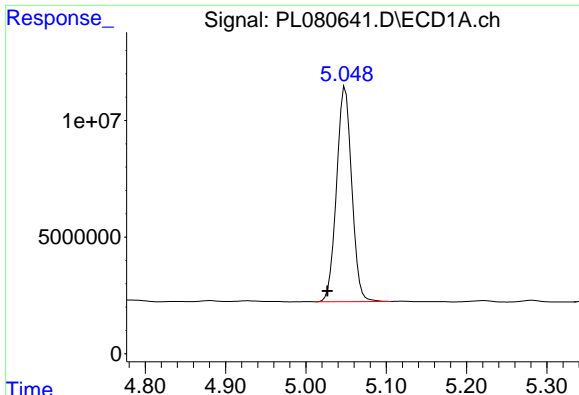
#22 Mirex

R.T.: 7.889 min  
 Delta R.T.: -0.006 min  
 Response: 77712214  
 Conc: 45.19 ng/ml



#22 Mirex

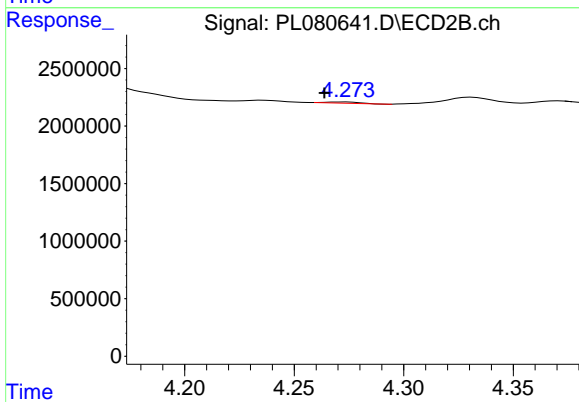
R.T.: 6.934 min  
 Delta R.T.: -0.007 min  
 Response: 98917790  
 Conc: 43.45 ng/ml



#24 Chlordane-2

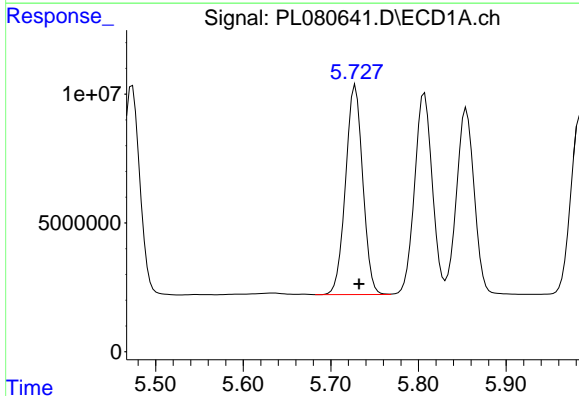
R.T.: 5.049 min  
 Delta R.T.: 0.022 min  
 Response: 121088410  
 Conc: 1255.46 ng/ml

Instrument :  
 ECD\_L  
 ClientSampleId :



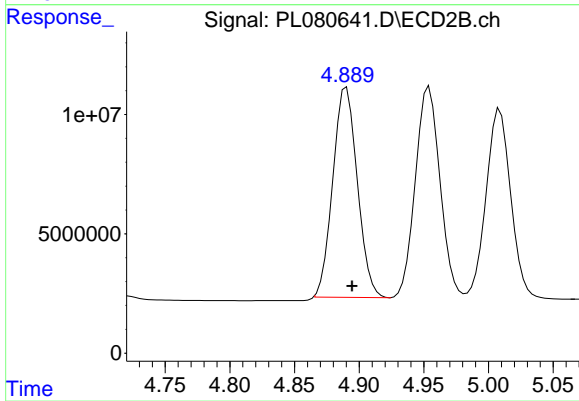
#24 Chlordane-2

R.T.: 4.272 min  
 Delta R.T.: 0.009 min  
 Response: 117208  
 Conc: 1.30 ng/ml



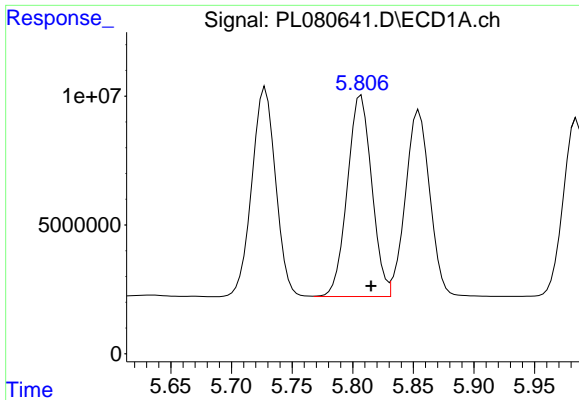
#25 Chlordane-3

R.T.: 5.728 min  
 Delta R.T.: -0.004 min  
 Response: 110803008  
 Conc: 327.91 ng/ml



#25 Chlordane-3

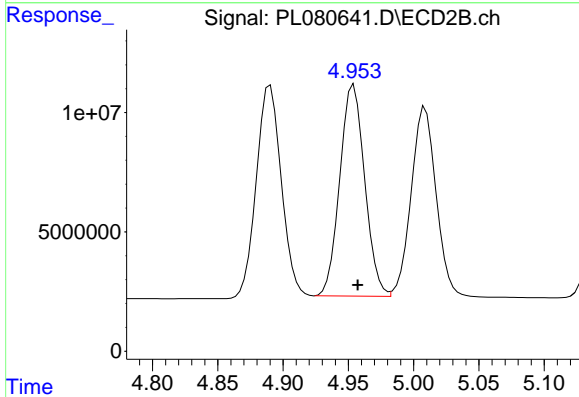
R.T.: 4.890 min  
 Delta R.T.: -0.004 min  
 Response: 115624087  
 Conc: 438.39 ng/ml



#26 Chlordane-4

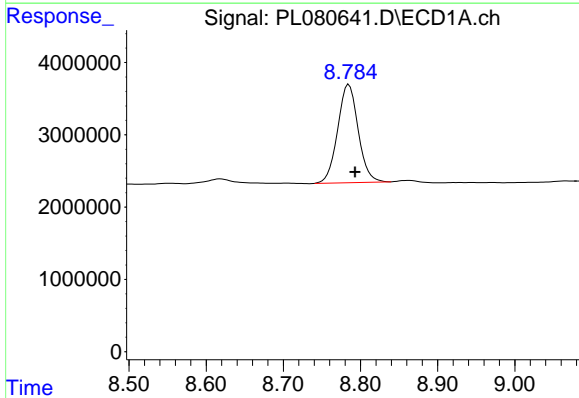
R.T.: 5.807 min  
 Delta R.T.: -0.008 min  
 Response: 109578714  
 Conc: 254.00 ng/ml

Instrument :  
 ECD\_L  
 ClientSampleId :



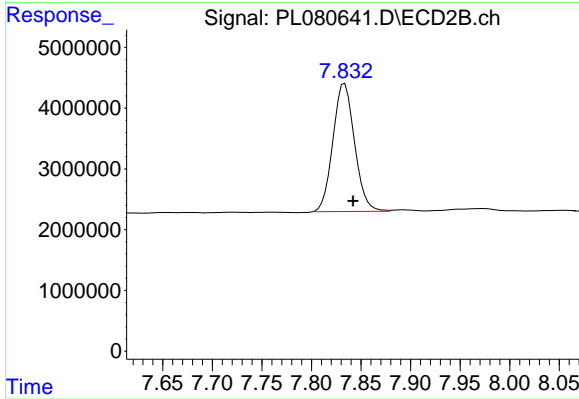
#26 Chlordane-4

R.T.: 4.954 min  
 Delta R.T.: -0.003 min  
 Response: 117561315  
 Conc: 436.55 ng/ml



#28 Decachlorobiphenyl

R.T.: 8.785 min  
 Delta R.T.: -0.008 min  
 Response: 25126255  
 Conc: 14.35 ng/ml



#28 Decachlorobiphenyl

R.T.: 7.834 min  
 Delta R.T.: -0.008 min  
 Response: 31980662  
 Conc: 13.42 ng/ml