

Data Path : Z:\pestpcbsrv\HPCHEM1\ECD\_L\Data\PL013125\  
 Data File : PL093928.D  
 Signal(s) : Signal #1: ECD1A.ch Signal #2: ECD2B.ch  
 Acq On : 31 Jan 2025 10:51  
 Operator : AR\AJ  
 Sample : I.BLK  
 Misc :  
 ALS Vial : 2 Sample Multiplier: 1

Instrument :  
 ECD\_L  
 ClientSampleId :  
 I.BLK

Integration File signal 1: autoint1.e  
 Integration File signal 2: autoint2.e  
 Quant Time: Feb 01 00:23:00 2025  
 Quant Method : Z:\pestpcbsrv\HPCHEM1\ECD\_L\methods\PL012125.M  
 Quant Title : GC Extractables  
 QLast Update : Tue Jan 21 14:58:05 2025  
 Response via : Initial Calibration  
 Integrator: ChemStation

Volume Inj. : 1 µl  
 Signal #1 Phase : ZB-MR2 Signal #2 Phase: ZB-MR2  
 Signal #1 Info : 30M x 0.32mm x0.5 Signal #2 Info : 30M x 0.32mm x0.25µm

	Compound	RT#1	RT#2	Resp#1	Resp#2	ng/ml	ng/ml
-----							
System Monitoring Compounds							
1)	SA Tetrachlo...	3.537	2.773	56869031	64496193	21.119	19.759
2)	SA Decachlor...	9.053	7.909	43185846	71542365	20.644	20.417
Target Compounds							
2)	A alpha-BHC	0.000	3.264	0	261165	N.D.	0.053 #
4)	MA Heptachlor	0.000	3.940	0	48612	N.D.	0.010 #
6)	B beta-BHC	0.000	3.906	0	217029	N.D.	0.109 #
7)	B delta-BHC	0.000	4.131	0	294478	N.D.	0.062 #
8)	B Heptachlo...	5.690	4.746f	2071317	160376	0.697	0.038 #
9)	A Endosulfan I	0.000	5.118f	0	1815642	N.D.	0.468 #
10)	B gamma-Chl...	0.000	4.989	0	6788139	N.D.	1.602 #
11)	B alpha-Chl...	0.000	5.057f	0	922930	N.D.	0.220 #
12)	B 4,4'-DDE	0.000	5.244	0	20175	N.D.	0.005 #
15)	B Endosulfa...	6.804	5.927	8117306	264135	3.369	0.071 #
16)	A 4,4'-DDD	0.000	5.762f	0	330568	N.D.	0.105 #
17)	MA 4,4'-DDT	0.000	6.021	0	33619	N.D.	0.010 #
18)	B Endrin al...	0.000	6.124	0	887151	N.D.	0.291 #
20)	A Methoxychlor	0.000	6.602	0	505929	N.D.	0.283 #
21)	B Endrin ke...	0.000	6.859f	0	1768188	N.D.	0.421 #
24)	Chlordane-2	0.000	4.353	0	139997	N.D.	0.954 #
25)	Chlordane-3	0.000	4.989	0	6788139	N.D.	15.611 #
26)	Chlordane-4	0.000	5.057	0	922930	N.D.	2.178 #
27)	Chlordane-5	0.000	5.927	0	264135	N.D.	1.725 #

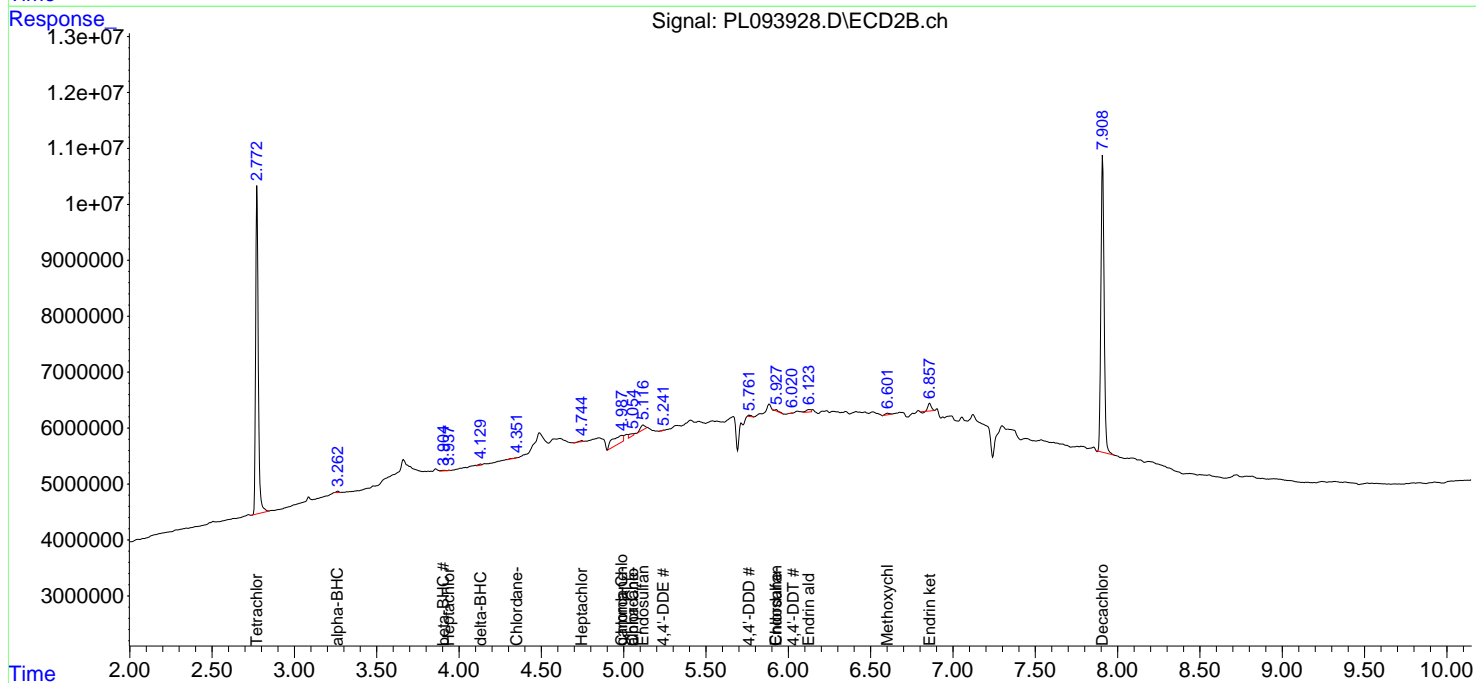
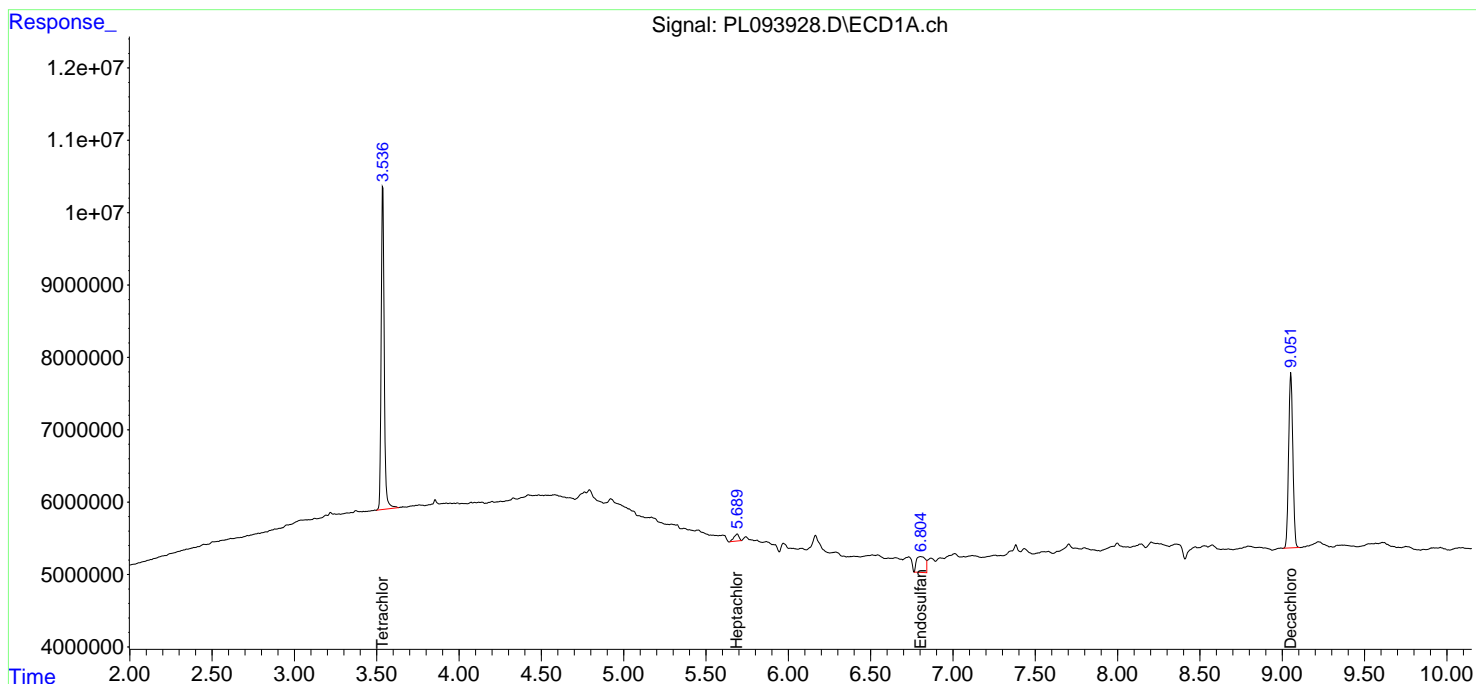
(f)=RT Delta > 1/2 Window (#)=Amounts differ by > 25% (m)=manual int.

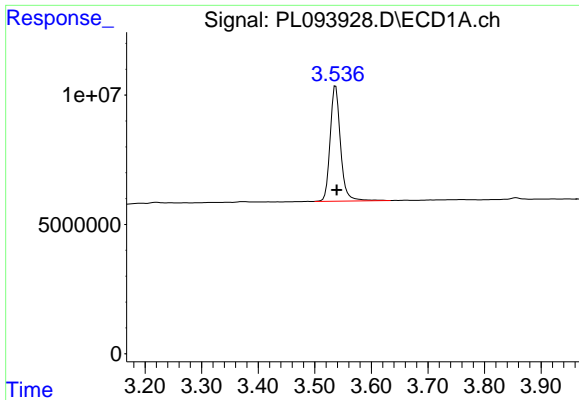
Data Path : Z:\pestpcbsrv\HPCHEM1\ECD\_L\Data\PL013125\  
 Data File : PL093928.D  
 Signal(s) : Signal #1: ECD1A.ch Signal #2: ECD2B.ch  
 Acq On : 31 Jan 2025 10:51  
 Operator : AR\AJ  
 Sample : I.BLK  
 Misc :  
 ALS Vial : 2 Sample Multiplier: 1

Instrument :  
 ECD\_L  
 ClientSampleId :  
 I.BLK

Integration File signal 1: autoint1.e  
 Integration File signal 2: autoint2.e  
 Quant Time: Feb 01 00:23:00 2025  
 Quant Method : Z:\pestpcbsrv\HPCHEM1\ECD\_L\methods\PL012125.M  
 Quant Title : GC Extractables  
 QLast Update : Tue Jan 21 14:58:05 2025  
 Response via : Initial Calibration  
 Integrator: ChemStation

Volume Inj. : 1 µl  
 Signal #1 Phase : ZB-MR1 Signal #2 Phase: ZB-MR2  
 Signal #1 Info : 30M x 0.32mm x0.5 Signal #2 Info : 30M x 0.32mm x0.25µm

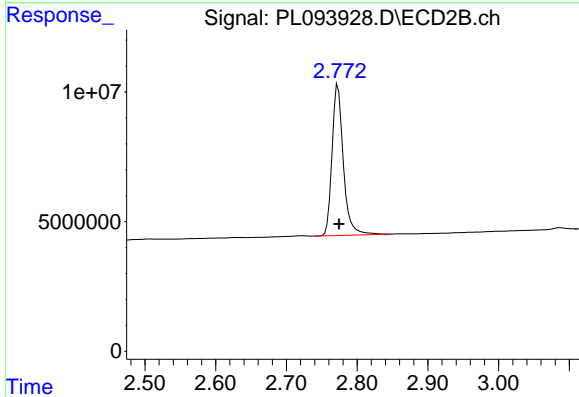




#1 Tetrachloro-m-xylene

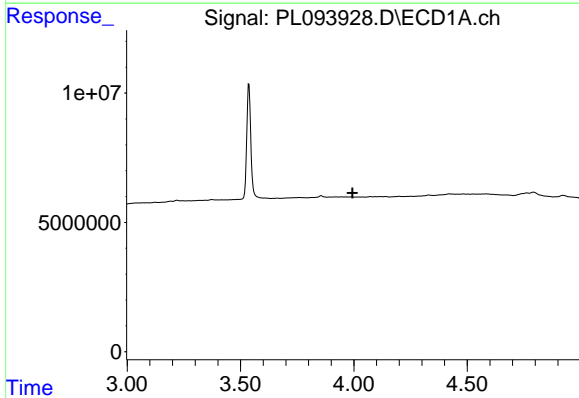
R.T.: 3.537 min  
 Delta R.T.: -0.002 min  
 Response: 56869031  
 Conc: 21.12 ng/ml

Instrument :  
 ECD\_L  
 ClientSampleId :  
 I.BLK



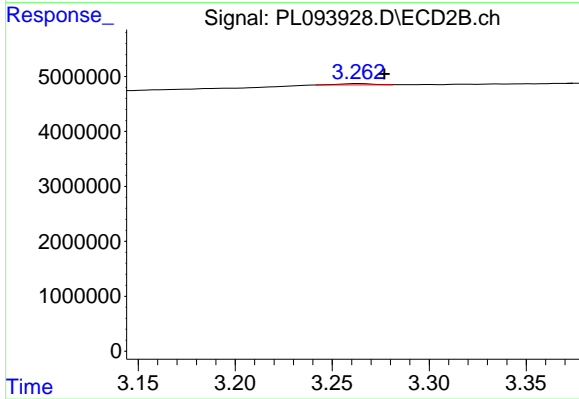
#1 Tetrachloro-m-xylene

R.T.: 2.773 min  
 Delta R.T.: -0.001 min  
 Response: 64496193  
 Conc: 19.76 ng/ml



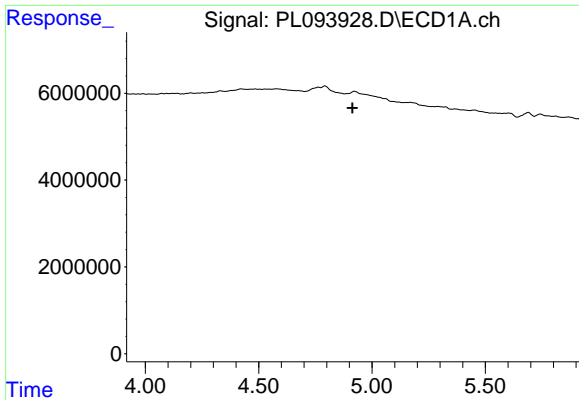
#2 alpha-BHC

R.T.: 0.000 min  
 Exp R.T. : 3.995 min  
 Response: 0  
 Conc: N.D.



#2 alpha-BHC

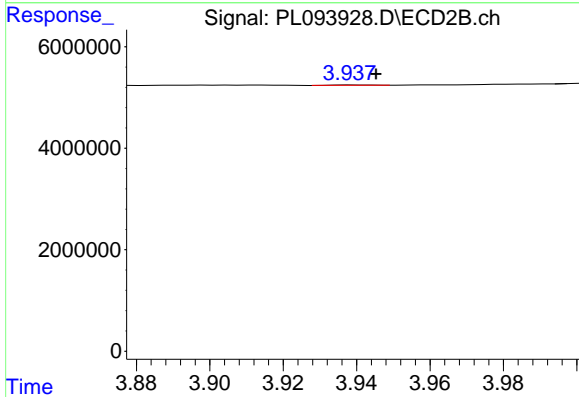
R.T.: 3.264 min  
 Delta R.T.: -0.013 min  
 Response: 261165  
 Conc: 0.05 ng/ml



#4 Heptachlor

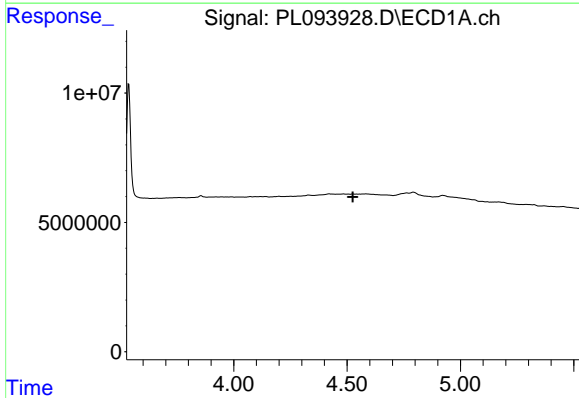
R.T.: 0.000 min  
 Exp R.T.: 4.914 min  
 Response: 0  
 Conc: N.D.

Instrument :  
 ECD\_L  
 ClientSampleId :  
 I.BLK



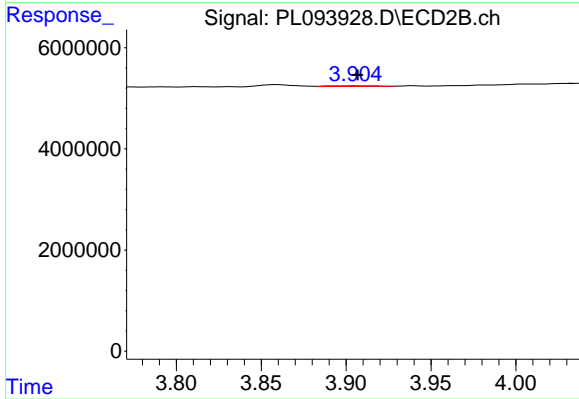
#4 Heptachlor

R.T.: 3.940 min  
 Delta R.T.: -0.006 min  
 Response: 48612  
 Conc: 0.01 ng/ml



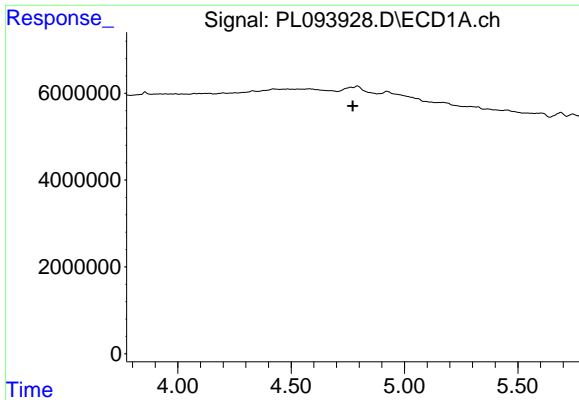
#6 beta-BHC

R.T.: 0.000 min  
 Exp R.T.: 4.525 min  
 Response: 0  
 Conc: N.D.



#6 beta-BHC

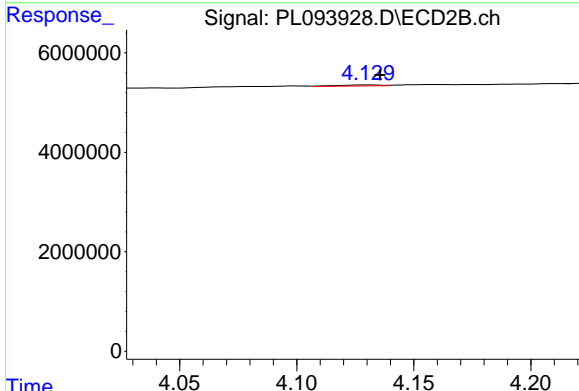
R.T.: 3.906 min  
 Delta R.T.: -0.001 min  
 Response: 217029  
 Conc: 0.11 ng/ml



#7 delta-BHC

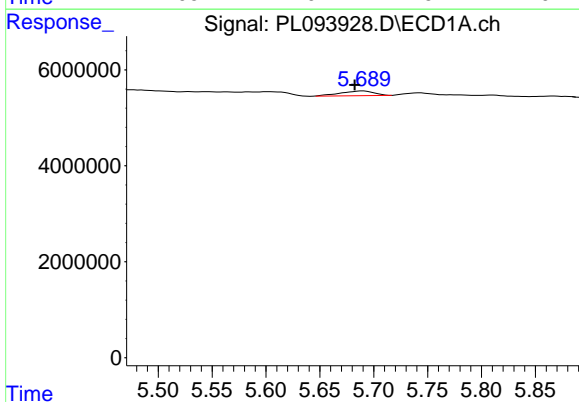
R.T.: 0.000 min  
 Exp R.T.: 4.772 min  
 Response: 0  
 Conc: N.D.

Instrument :  
 ECD\_L  
 ClientSampleId :  
 I.BLK



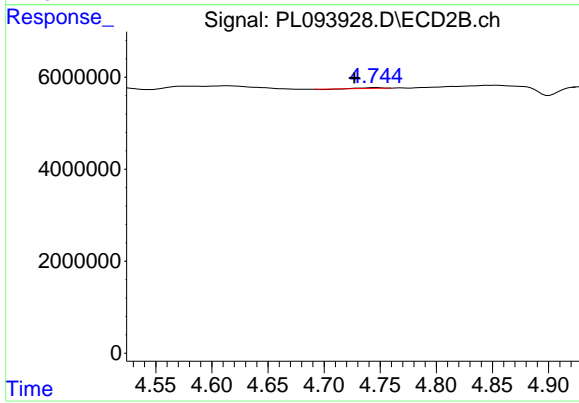
#7 delta-BHC

R.T.: 4.131 min  
 Delta R.T.: -0.005 min  
 Response: 294478  
 Conc: 0.06 ng/ml



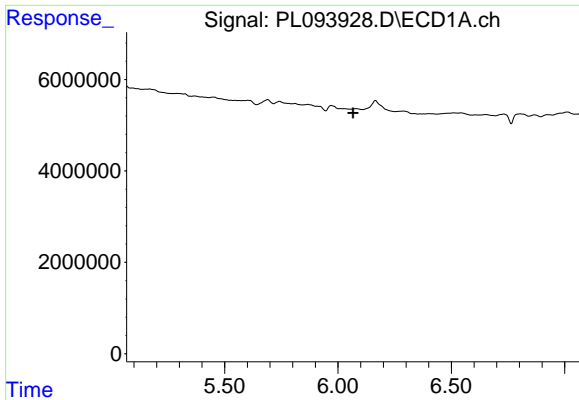
#8 Heptachlor epoxide

R.T.: 5.690 min  
 Delta R.T.: 0.008 min  
 Response: 2071317  
 Conc: 0.70 ng/ml



#8 Heptachlor epoxide

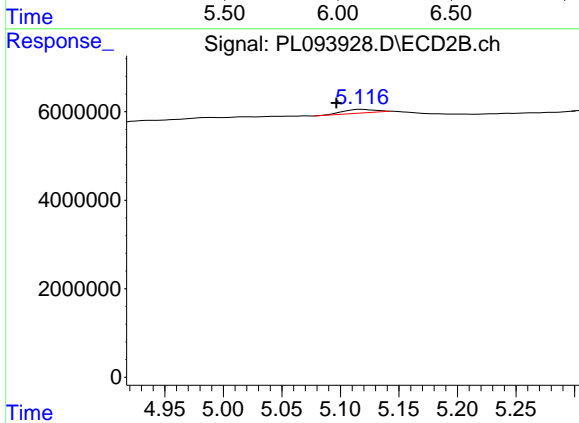
R.T.: 4.746 min  
 Delta R.T.: 0.019 min  
 Response: 160376  
 Conc: 0.04 ng/ml



#9 Endosulfan I

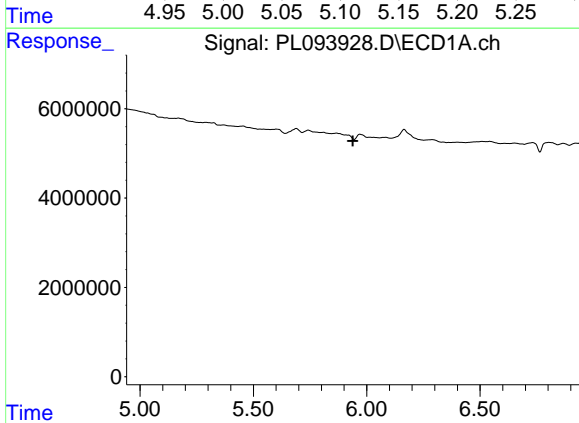
R.T.: 0.000 min  
 Exp R.T.: 6.067 min  
 Response: 0  
 Conc: N.D.

Instrument :  
 ECD\_L  
 ClientSampleId :  
 I.BLK



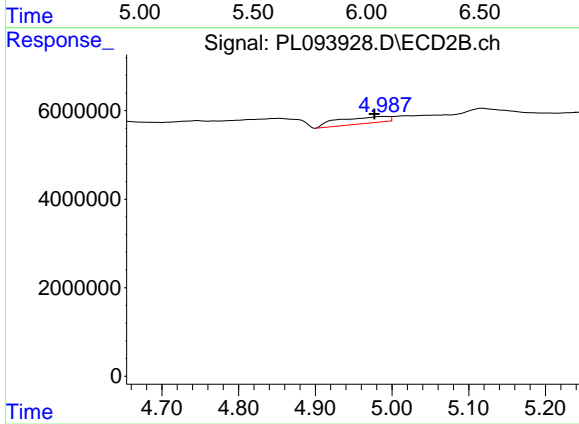
#9 Endosulfan I

R.T.: 5.118 min  
 Delta R.T.: 0.021 min  
 Response: 1815642  
 Conc: 0.47 ng/ml



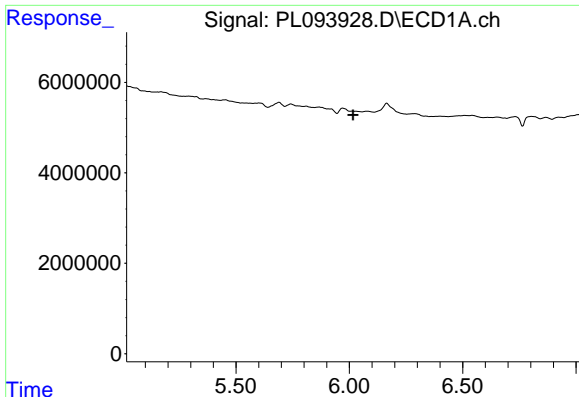
#10 gamma-Chlordane

R.T.: 0.000 min  
 Exp R.T.: 5.938 min  
 Response: 0  
 Conc: N.D.



#10 gamma-Chlordane

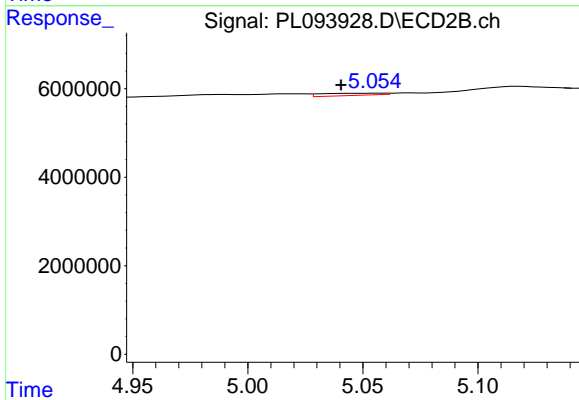
R.T.: 4.989 min  
 Delta R.T.: 0.012 min  
 Response: 6788139  
 Conc: 1.60 ng/ml



#11 alpha-Chlordane

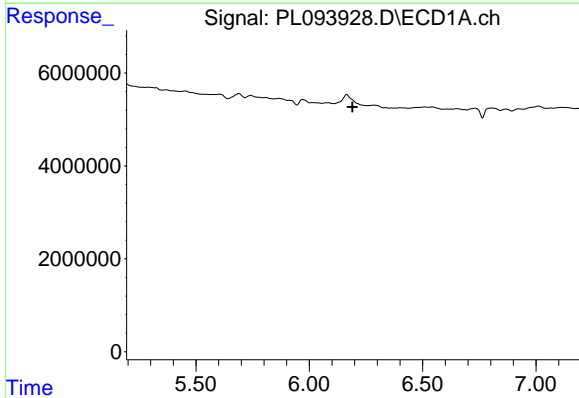
R.T.: 0.000 min  
 Exp R.T.: 6.017 min  
 Response: 0  
 Conc: N.D.

Instrument :  
 ECD\_L  
 ClientSampleId :  
 I.BLK



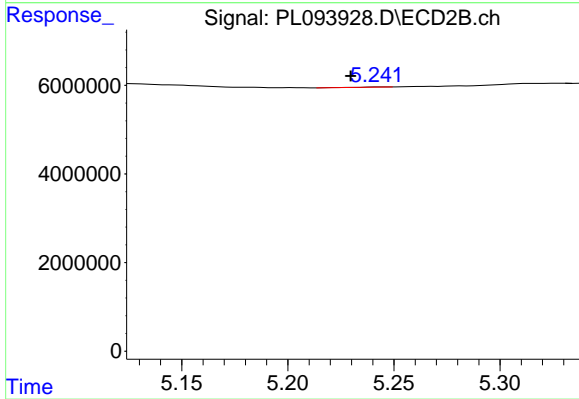
#11 alpha-Chlordane

R.T.: 5.057 min  
 Delta R.T.: 0.016 min  
 Response: 922930  
 Conc: 0.22 ng/ml



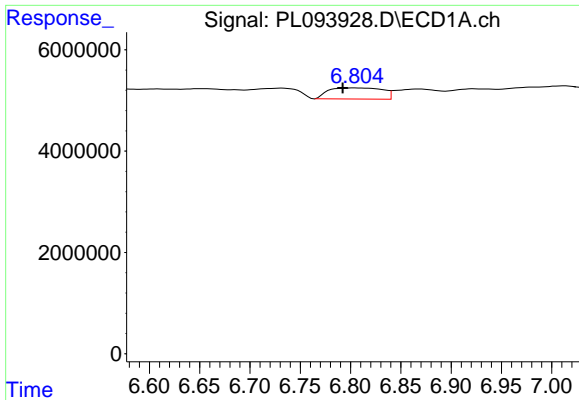
#12 4,4'-DDE

R.T.: 0.000 min  
 Exp R.T.: 6.191 min  
 Response: 0  
 Conc: N.D.



#12 4,4'-DDE

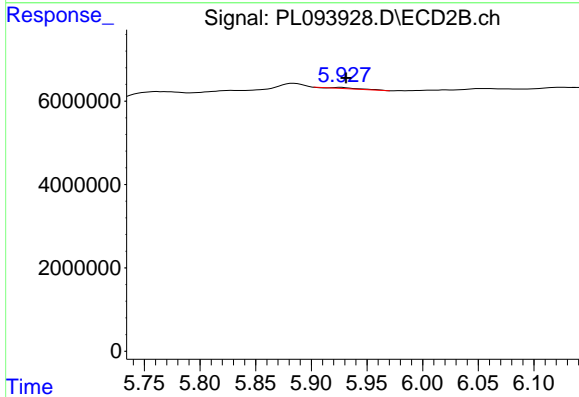
R.T.: 5.244 min  
 Delta R.T.: 0.014 min  
 Response: 20175  
 Conc: 0.01 ng/ml



#15 Endosulfan II

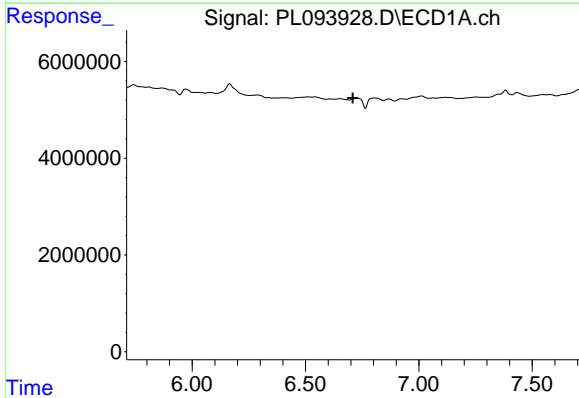
R.T.: 6.804 min  
 Delta R.T.: 0.012 min  
 Response: 8117306  
 Conc: 3.37 ng/ml

Instrument :  
 ECD\_L  
 ClientSampleId :  
 I.BLK



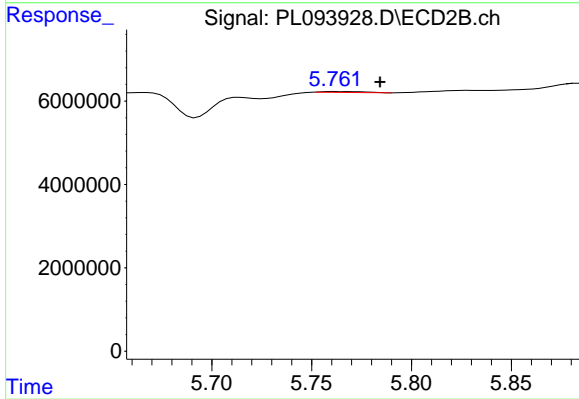
#15 Endosulfan II

R.T.: 5.927 min  
 Delta R.T.: -0.005 min  
 Response: 264135  
 Conc: 0.07 ng/ml



#16 4,4'-DDD

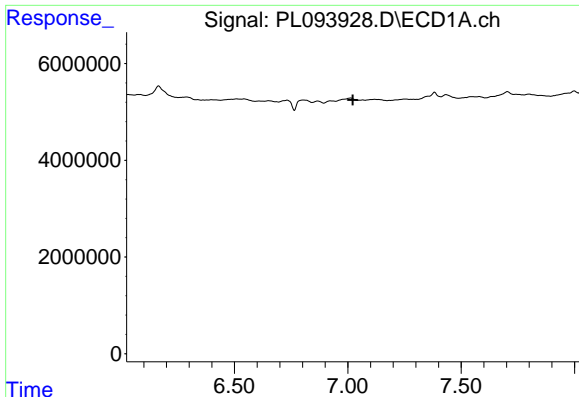
R.T.: 0.000 min  
 Exp R.T. : 6.708 min  
 Response: 0  
 Conc: N.D.



#16 4,4'-DDD

R.T.: 5.762 min  
 Delta R.T.: -0.022 min  
 Response: 330568  
 Conc: 0.10 ng/ml

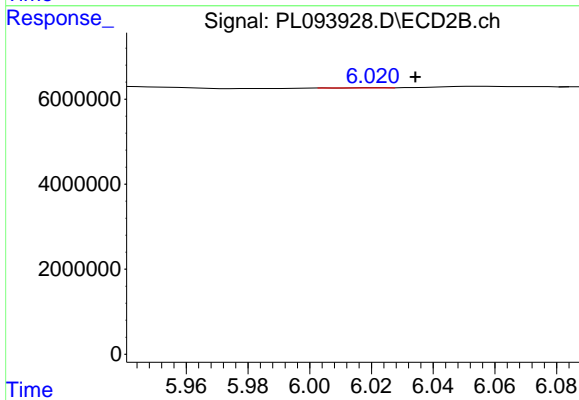




#17 4,4'-DDT

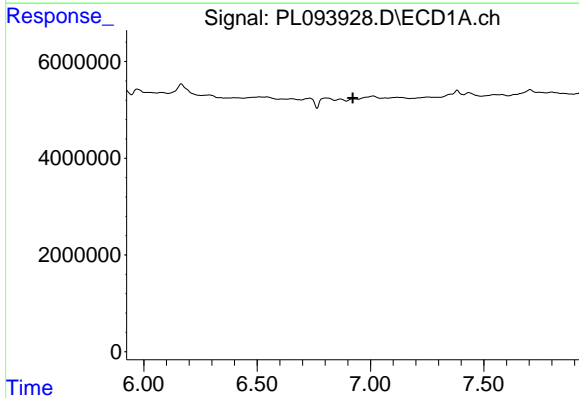
R.T.: 0.000 min  
 Exp R.T. : 7.022 min  
 Response: 0  
 Conc: N.D.

Instrument :  
 ECD\_L  
 ClientSampleId :  
 I.BLK



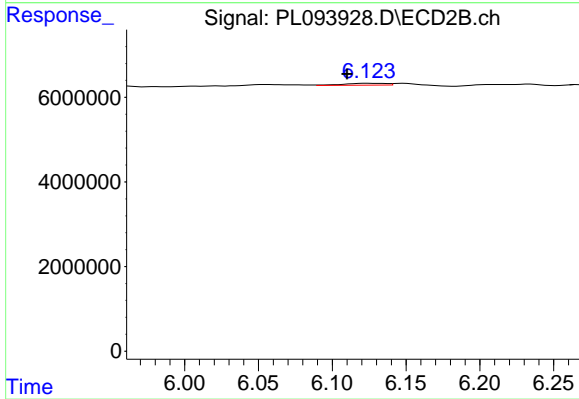
#17 4,4'-DDT

R.T.: 6.021 min  
 Delta R.T.: -0.013 min  
 Response: 33619  
 Conc: 0.01 ng/ml



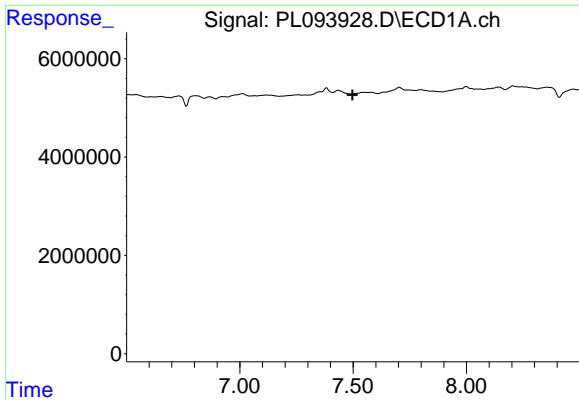
#18 Endrin aldehyde

R.T.: 0.000 min  
 Exp R.T. : 6.923 min  
 Response: 0  
 Conc: N.D.



#18 Endrin aldehyde

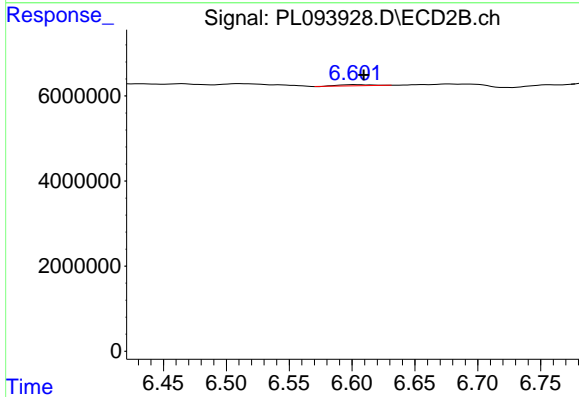
R.T.: 6.124 min  
 Delta R.T.: 0.014 min  
 Response: 887151  
 Conc: 0.29 ng/ml



#20 Methoxychlor

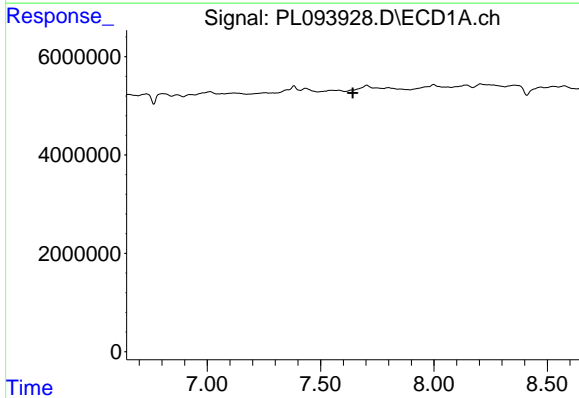
R.T.: 0.000 min  
 Exp R.T. : 7.498 min  
 Response: 0  
 Conc: N.D.

Instrument :  
 ECD\_L  
 ClientSampleId :  
 I.BLK



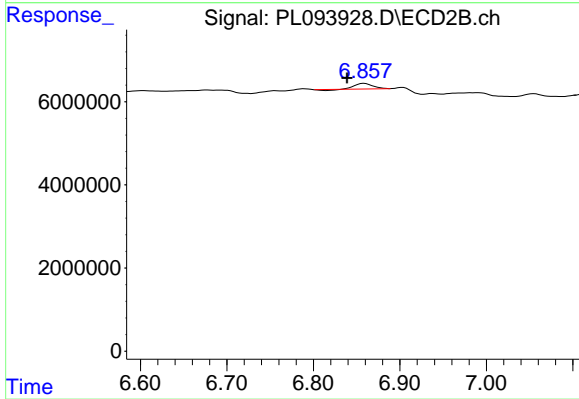
#20 Methoxychlor

R.T.: 6.602 min  
 Delta R.T.: -0.007 min  
 Response: 505929  
 Conc: 0.28 ng/ml



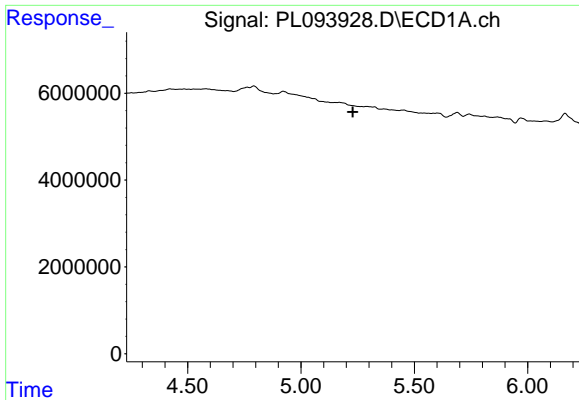
#21 Endrin ketone

R.T.: 0.000 min  
 Exp R.T. : 7.642 min  
 Response: 0  
 Conc: N.D.



#21 Endrin ketone

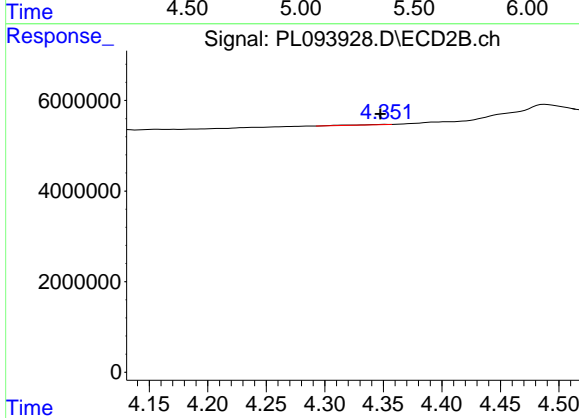
R.T.: 6.859 min  
 Delta R.T.: 0.020 min  
 Response: 1768188  
 Conc: 0.42 ng/ml



#24 Chlordane-2

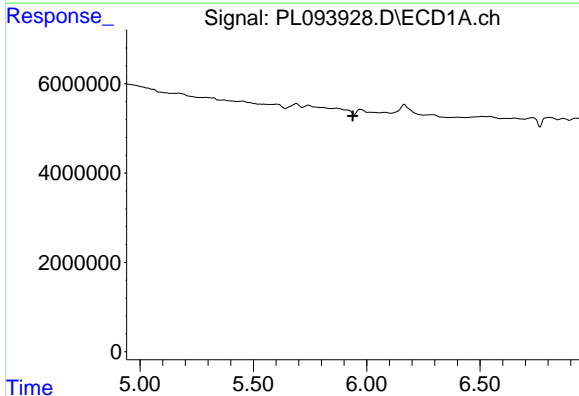
R.T.: 0.000 min  
 Exp R.T.: 5.229 min  
 Response: 0  
 Conc: N.D.

Instrument :  
 ECD\_L  
 ClientSampleId :  
 I.BLK



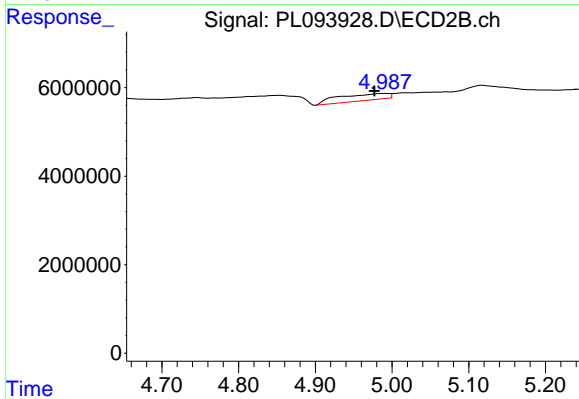
#24 Chlordane-2

R.T.: 4.353 min  
 Delta R.T.: 0.005 min  
 Response: 139997  
 Conc: 0.95 ng/ml



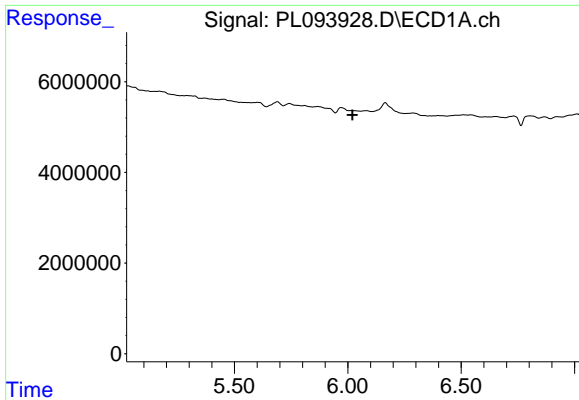
#25 Chlordane-3

R.T.: 0.000 min  
 Exp R.T.: 5.939 min  
 Response: 0  
 Conc: N.D.



#25 Chlordane-3

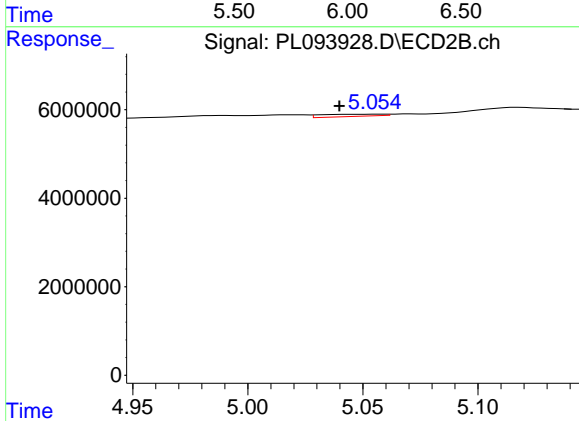
R.T.: 4.989 min  
 Delta R.T.: 0.012 min  
 Response: 6788139  
 Conc: 15.61 ng/ml



#26 Chlordane-4

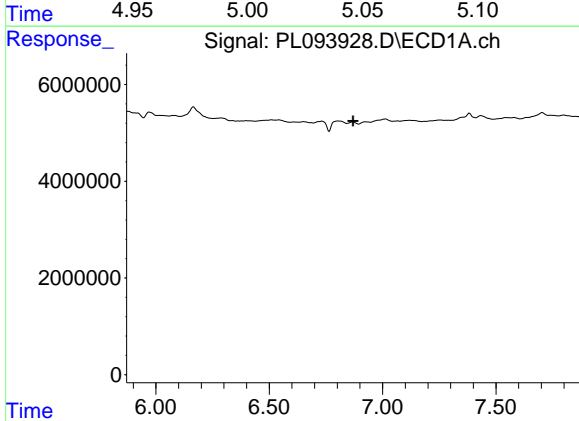
R.T.: 0.000 min  
 Exp R.T.: 6.021 min  
 Response: 0  
 Conc: N.D.

Instrument :  
 ECD\_L  
 ClientSampleId :  
 I.BLK



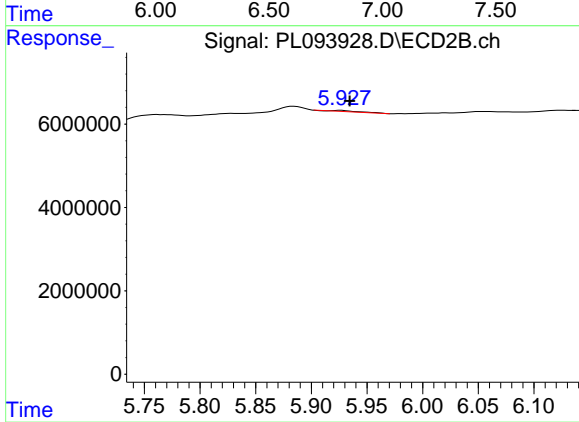
#26 Chlordane-4

R.T.: 5.057 min  
 Delta R.T.: 0.017 min  
 Response: 922930  
 Conc: 2.18 ng/ml



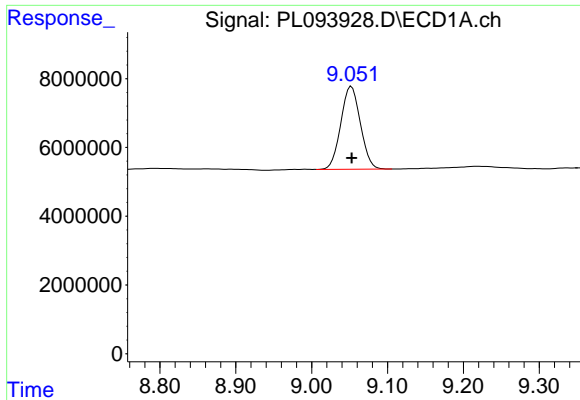
#27 Chlordane-5

R.T.: 0.000 min  
 Exp R.T.: 6.870 min  
 Response: 0  
 Conc: N.D.



#27 Chlordane-5

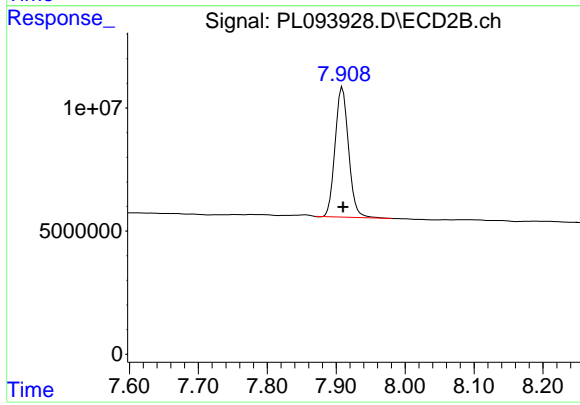
R.T.: 5.927 min  
 Delta R.T.: -0.008 min  
 Response: 264135  
 Conc: 1.72 ng/ml



#28 Decachlorobiphenyl

R.T.: 9.053 min  
Delta R.T.: 0.000 min  
Response: 43185846  
Conc: 20.64 ng/ml

Instrument :  
ECD\_L  
ClientSampleId :  
I.BLK



#28 Decachlorobiphenyl

R.T.: 7.909 min  
Delta R.T.: 0.000 min  
Response: 71542365  
Conc: 20.42 ng/ml