

Data Path : Z:\pestpcbsrv\HPCHEM1\ECD_L\Data\PL020119\
 Data File : PL044361.D
 Signal(s) : Signal #1: ECD1A.ch Signal #2: ECD2B.ch
 Acq On : 01 Feb 2019 09:19
 Operator : AJ\SJ
 Sample : I.BLK
 Misc :
 ALS Vial : 2 Sample Multiplier: 1

Instrument :
 ECD_L
 ClientSampleID :
 I.BLK

Integration File signal 1: autoint1.e
 Integration File signal 2: autoint2.e
 Quant Time: Feb 01 23:07:29 2019
 Quant Method : Z:\pestpcbsrv\HPCHEM1\ECD_L\methods\PL012219.M
 Quant Title : GC Extractables
 QLast Update : Mon Jan 28 01:20:09 2019
 Response via : Initial Calibration
 Integrator: ChemStation

Volume Inj. : 2 µl
 Signal #1 Phase : ZB-MR1 Signal #2 Phase: ZB-MR2
 Signal #1 Info : 30M x 0.32mm x0.5 Signal #2 Info : 30M x 0.32mm x0.25µm

Compound	RT#1	RT#2	Resp#1	Resp#2	ng/ml	ng/ml

System Monitoring Compounds						
1) SA Tetrachlo...	3.366	3.985	121.2E6	41732321	19.996	19.132
28) SA Decachlor...	8.049	9.042	135.9E6	41589080	19.592	18.748
Target Compounds						
6) B beta-BHC	4.283f	0.000	8477303	0	2.445	N.D. #

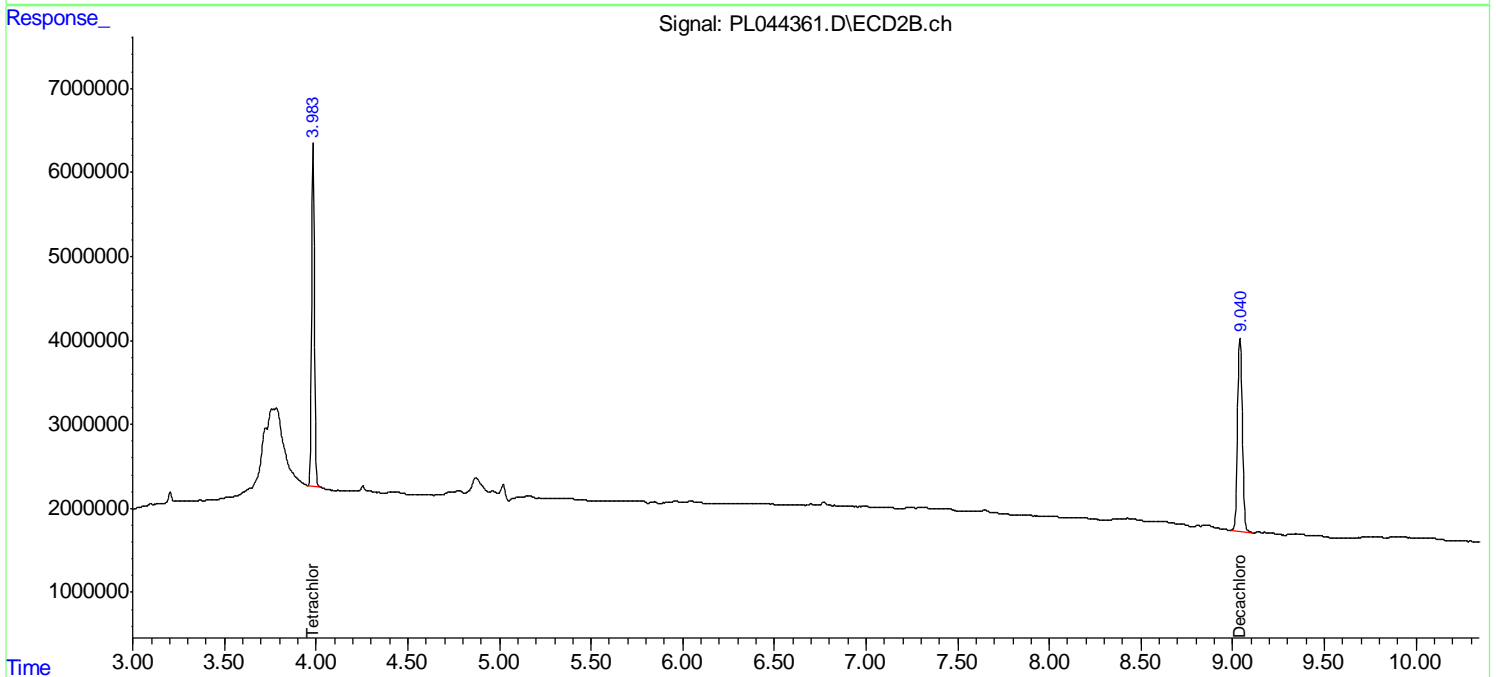
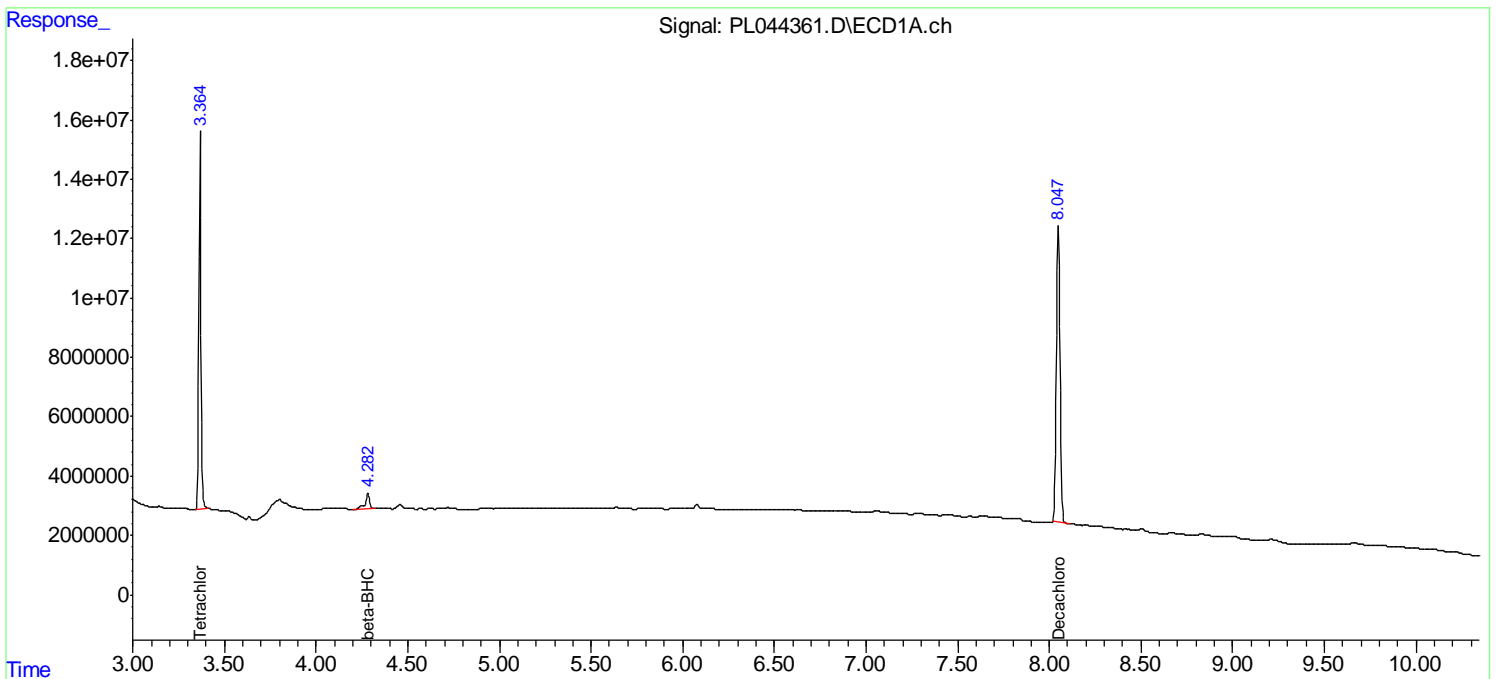
(f)=RT Delta > 1/2 Window (#)=Amounts differ by > 25% (m)=manual int.

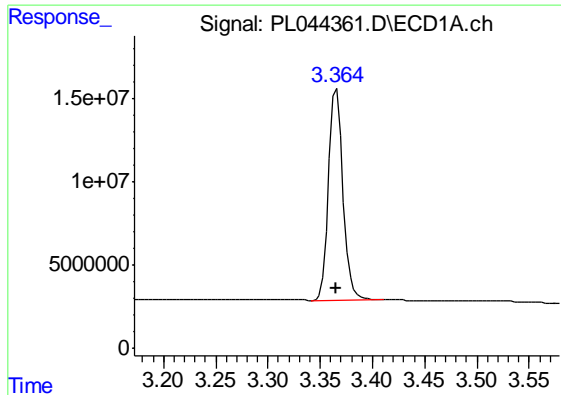
Data Path : Z:\pestpcbsrv\HPCHEM1\ECD_L\Data\PL020119\
 Data File : PL044361.D
 Signal(s) : Signal #1: ECD1A.ch Signal #2: ECD2B.ch
 Acq On : 01 Feb 2019 09:19
 Operator : AJ\SJ
 Sample : I.BLK
 Misc :
 ALS Vial : 2 Sample Multiplier: 1

Instrument :
 ECD_L
ClientSampleId :
 I.BLK

Integration File signal 1: autoint1.e
 Integration File signal 2: autoint2.e
 Quant Time: Feb 01 23:07:29 2019
 Quant Method : Z:\pestpcbsrv\HPCHEM1\ECD_L\methods\PL012219.M
 Quant Title : GC Extractables
 QLast Update : Mon Jan 28 01:20:09 2019
 Response via : Initial Calibration
 Integrator: ChemStation

Volume Inj. : 2 µl
 Signal #1 Phase : ZB-MR1 Signal #2 Phase: ZB-MR2
 Signal #1 Info : 30M x 0.32mm x0.5 Signal #2 Info : 30M x 0.32mm x0.25µm

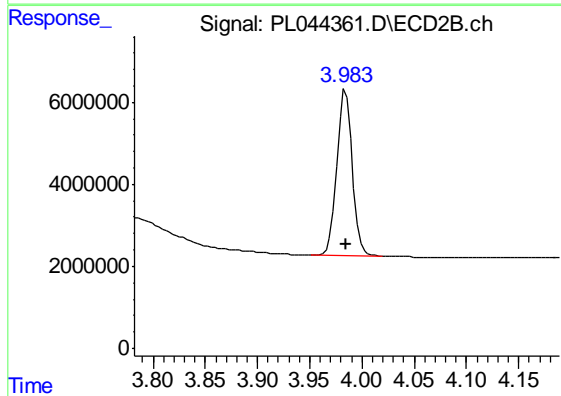




#1 Tetrachloro-m-xylene

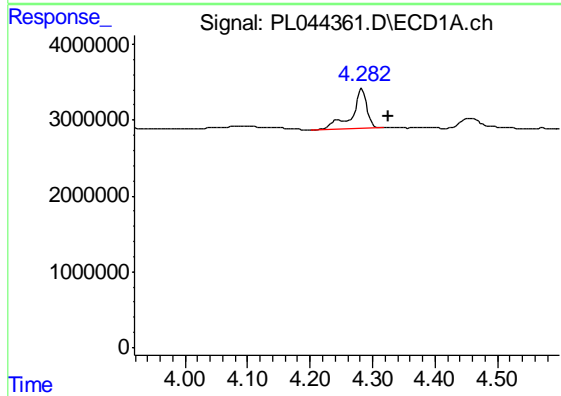
R.T.: 3.366 min
 Delta R.T.: 0.000 min
 Response: 121183018
 Conc: 20.00 ng/ml

Instrument :
 ECD_L
 ClientSampled :
 I.BLK



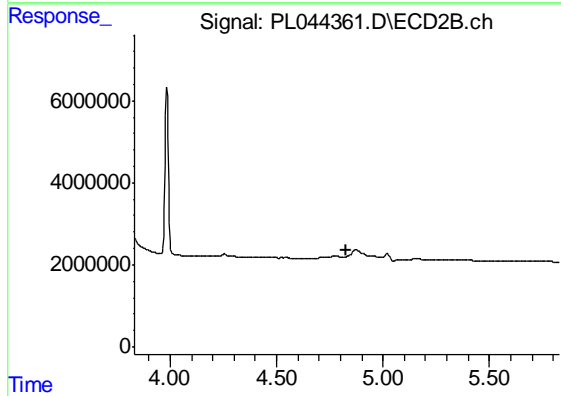
#1 Tetrachloro-m-xylene

R.T.: 3.985 min
 Delta R.T.: 0.000 min
 Response: 41732321
 Conc: 19.13 ng/ml



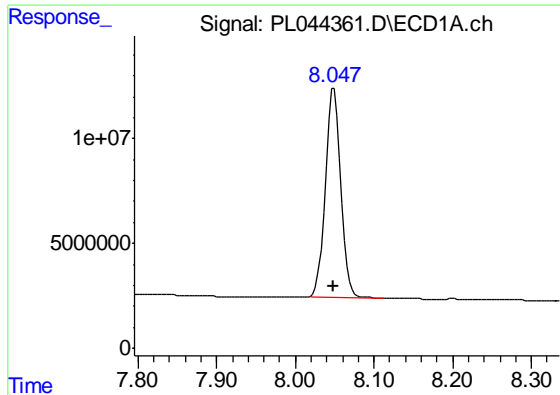
#6 beta-BHC

R.T.: 4.283 min
 Delta R.T.: -0.042 min
 Response: 8477303
 Conc: 2.45 ng/ml



#6 beta-BHC

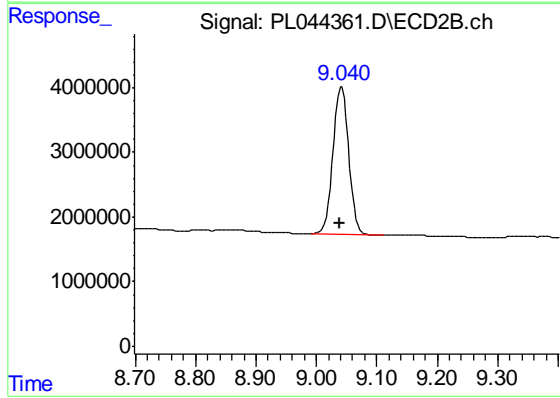
R.T.: 0.000 min
 Exp R.T. : 4.830 min
 Response: 0
 Conc: N.D.



#28 Decachlorobiphenyl

R.T.: 8.049 min
Delta R.T.: 0.000 min
Response: 135869773
Conc: 19.59 ng/ml

Instrument :
ECD_L
ClientSampleId :
I.BLK



#28 Decachlorobiphenyl

R.T.: 9.042 min
Delta R.T.: 0.002 min
Response: 41589080
Conc: 18.75 ng/ml