

Data Path : Z:\pestpcbsrv\HPCHEM1\ECD_L\Data\PL020119\
 Data File : PL044395.D
 Signal(s) : Signal #1: ECD1A.ch Signal #2: ECD2B.ch
 Acq On : 01 Feb 2019 22:04
 Operator : AJ\SJ
 Sample : PSTDCCC050
 Misc :
 ALS Vial : 4 Sample Multiplier: 1

Instrument :
 ECD_L
 ClientSampleId :
 PSTDCCC050

Integration File signal 1: autoint1.e
 Integration File signal 2: autoint2.e
 Quant Time: Feb 01 23:15:48 2019
 Quant Method : Z:\pestpcbsrv\HPCHEM1\ECD_L\methods\PL012219.M
 Quant Title : GC Extractables
 QLast Update : Mon Jan 28 01:20:09 2019
 Response via : Initial Calibration
 Integrator: ChemStation

Volume Inj. : 2 µl
 Signal #1 Phase : ZB-MR1 Signal #2 Phase: ZB-MR2
 Signal #1 Info : 30M x 0.32mm x0.5 Signal #2 Info : 30M x 0.32mm x0.25µm

Compound	RT#1	RT#2	Resp#1	Resp#2	ng/ml	ng/ml

System Monitoring Compounds						
1) SA Tetrachlo...	3.366	3.985	296.1E6	98472623	48.855	45.144
28) SA Decachlor...	8.049	9.042	285.3E6	89541034	41.138	40.363
Target Compounds						
2) A alpha-BHC	3.796	4.375	451.0E6	130.0E6	50.538	46.852
3) MA gamma-BHC...	4.073	4.659	416.1E6	122.4E6	51.748	46.292
4) MA Heptachlor	4.361	5.166	420.8E6	122.6E6	53.369	47.254
5) MB Aldrin	4.602	5.471	393.0E6	115.5E6	50.336	45.900
6) B beta-BHC	4.325	4.830	175.7E6	56714528	50.689	48.064
7) B delta-BHC	4.522	5.046	341.1E6	89796462	52.485	47.239
8) B Heptachlo...	5.039	5.856	386.5E6	114.5E6	51.194	49.487
9) A Endosulfan I	5.371	6.213	358.7E6	103.7E6	50.921	44.794
10) B gamma-Chl...	5.263	6.091	395.9E6	114.2E6	51.118	45.266
11) B alpha-Chl...	5.318	6.163	389.4E6	113.2E6	51.107	44.989
12) B 4,4'-DDE	5.486	6.321	349.0E6	98406615	51.518	45.854
13) MA Dieldrin	5.612	6.470	386.1E6	107.0E6	51.383	44.649
14) MA Endrin	5.865	6.687	343.4E6	88771253	51.208	44.049
15) B Endosulfa...	6.139	6.897	343.0E6	94630323	50.844	44.814
16) A 4,4'-DDD	5.998	6.811	307.5E6	83219093	55.342	48.527
17) MA 4,4'-DDT	6.233	7.109	264.8E6	73734957	51.932	44.931
18) B Endrin al...	6.306	7.020	279.8E6	81921608	49.471	42.947
19) B Endosulfa...	6.518	7.243	290.8E6	85004923	50.994	44.208
20) A Methoxychlor	6.779	7.567	147.3E6	44259073	49.676	43.273
21) B Endrin ke...	7.001	7.713	339.9E6	93904919	48.829	44.011

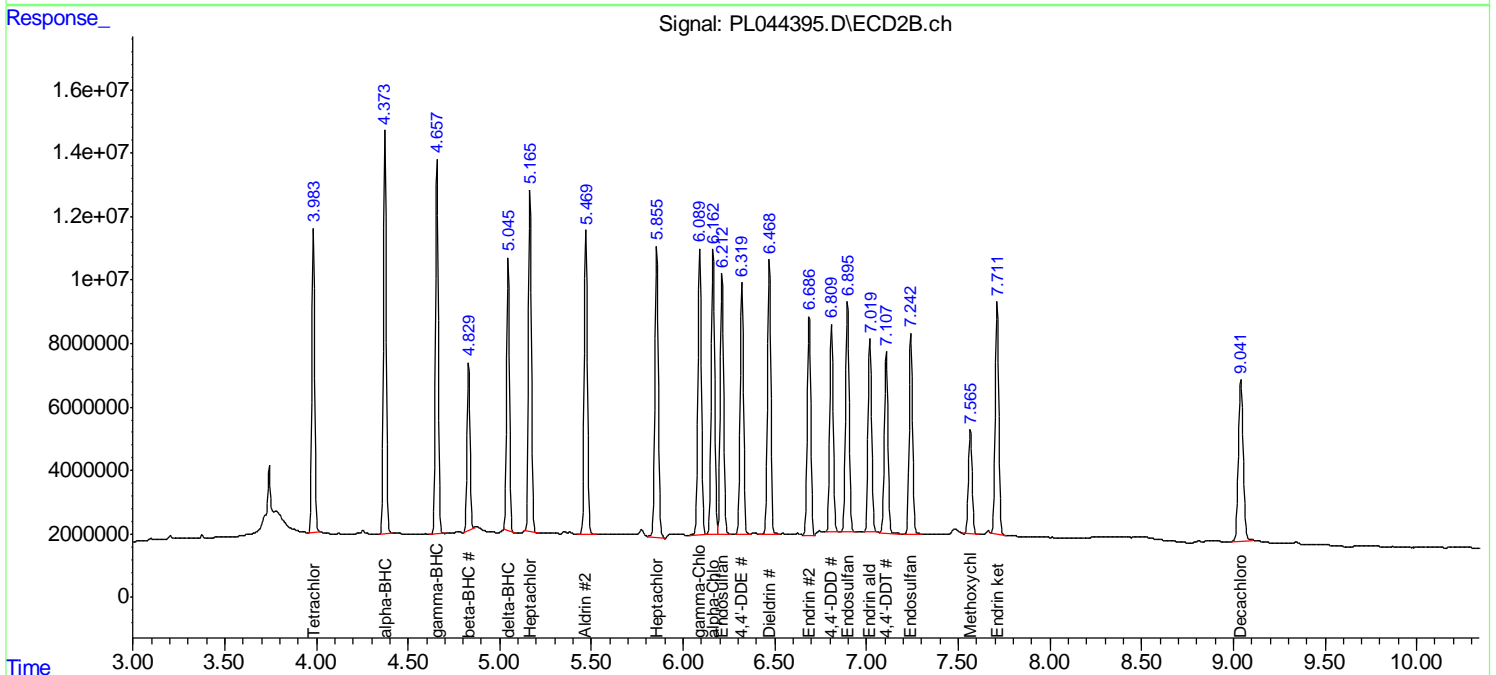
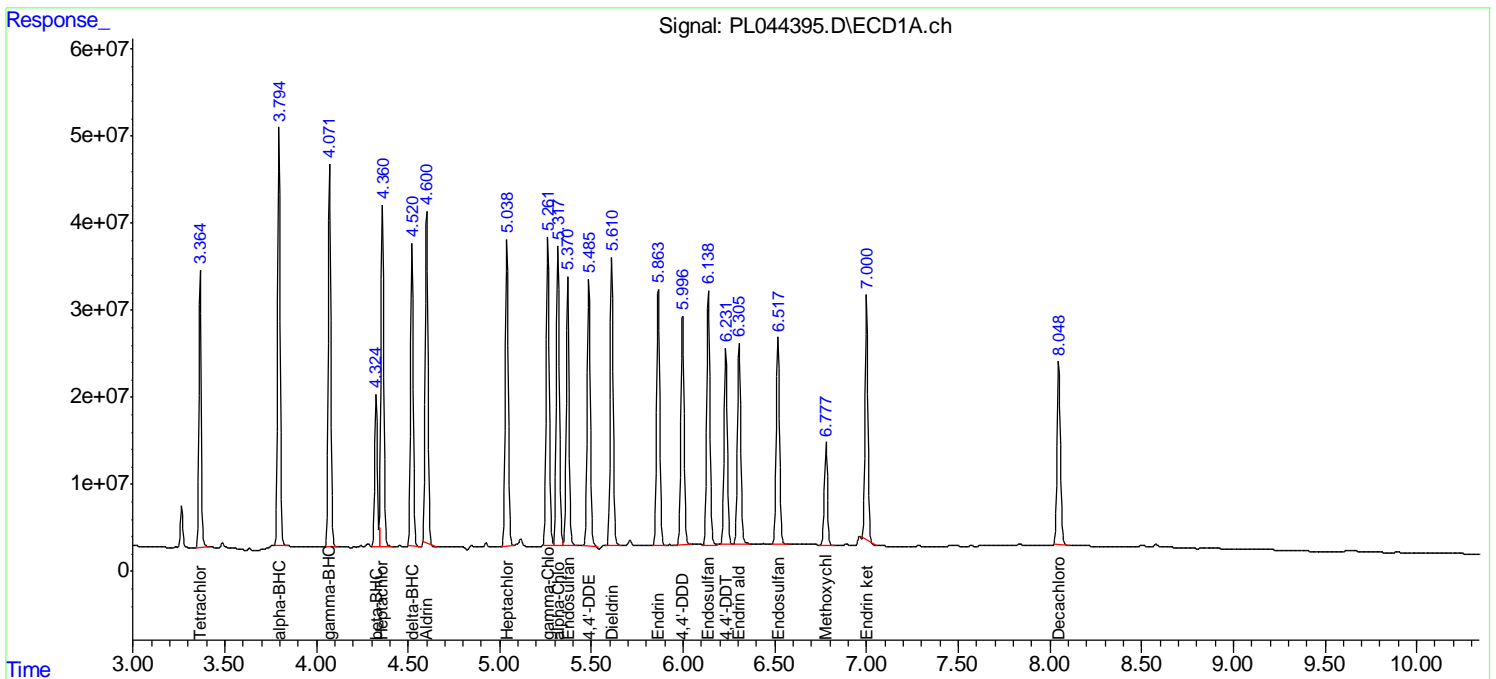
(f)=RT Delta > 1/2 Window (#)=Amounts differ by > 25% (m)=manual int.

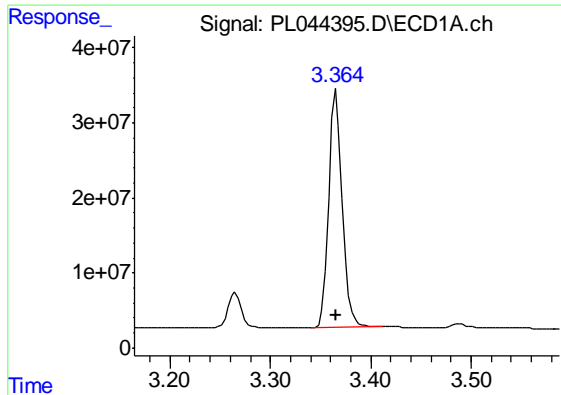
Data Path : Z:\pestpcbsrv\HPCHEM1\ECD_L\Data\PL020119\
 Data File : PL044395.D
 Signal(s) : Signal #1: ECD1A.ch Signal #2: ECD2B.ch
 Acq On : 01 Feb 2019 22:04
 Operator : AJ\SJ
 Sample : PSTDCCC050
 Misc :
 ALS Vial : 4 Sample Multiplier: 1

Instrument :
 ECD_L
 Client Sampled :
 PSTDCCC050

Integration File signal 1: autoint1.e
 Integration File signal 2: autoint2.e
 Quant Time: Feb 01 23:15:48 2019
 Quant Method : Z:\pestpcbsrv\HPCHEM1\ECD_L\methods\PL012219.M
 Quant Title : GC Extractables
 QLast Update : Mon Jan 28 01:20:09 2019
 Response via : Initial Calibration
 Integrator: ChemStation

Volume Inj. : 2 µl
 Signal #1 Phase : ZB-MR1 Signal #2 Phase: ZB-MR2
 Signal #1 Info : 30M x 0.32mm x0.5 Signal #2 Info : 30M x 0.32mm x0.25µm

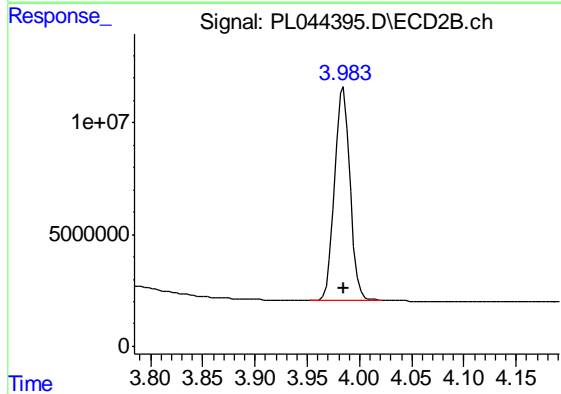




#1 Tetrachloro-m-xylene

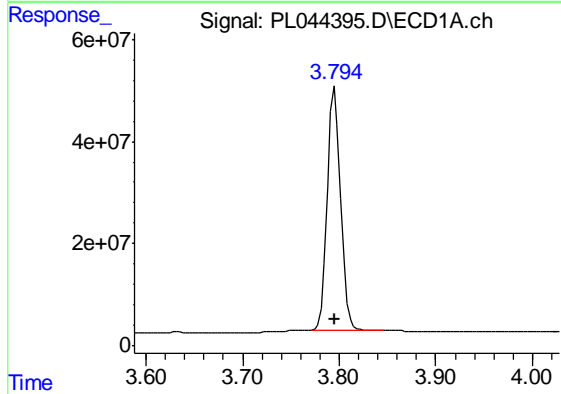
R.T.: 3.366 min
 Delta R.T.: 0.000 min
 Response: 296079007
 Conc: 48.86 ng/ml

Instrument :
 ECD_L
 ClientSampleId :
 PSTDCCC050



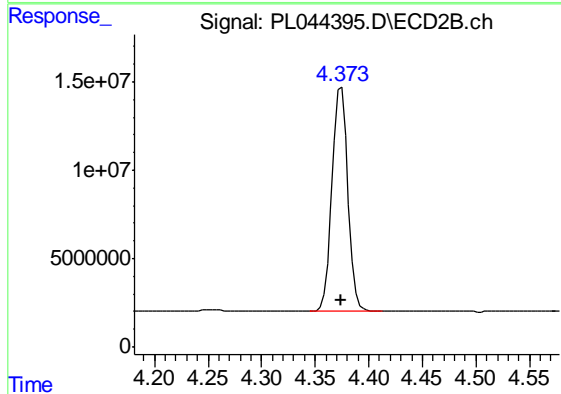
#1 Tetrachloro-m-xylene

R.T.: 3.985 min
 Delta R.T.: 0.000 min
 Response: 98472623
 Conc: 45.14 ng/ml



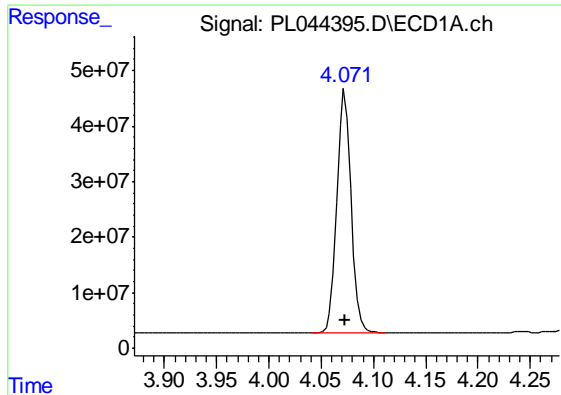
#2 alpha-BHC

R.T.: 3.796 min
 Delta R.T.: 0.000 min
 Response: 450974040
 Conc: 50.54 ng/ml



#2 alpha-BHC

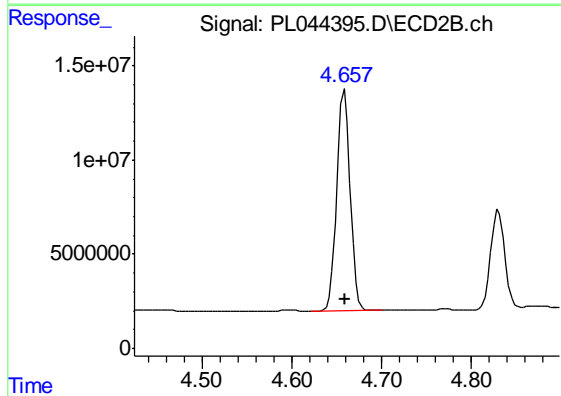
R.T.: 4.375 min
 Delta R.T.: 0.000 min
 Response: 130038435
 Conc: 46.85 ng/ml



#3 gamma-BHC (Lindane)

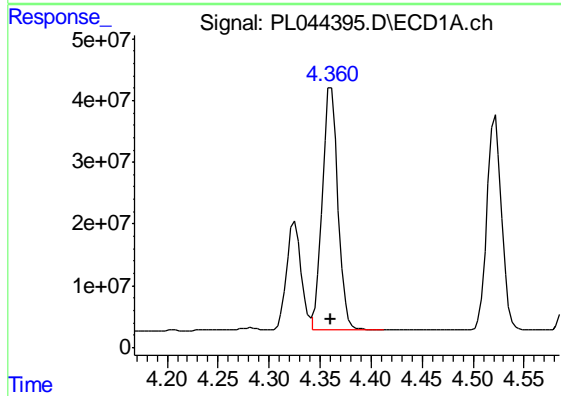
R.T.: 4.073 min
 Delta R.T.: 0.000 min
 Response: 416080903
 Conc: 51.75 ng/ml

Instrument :
 ECD_L
 ClientSampleId :
 PSTDCCC050



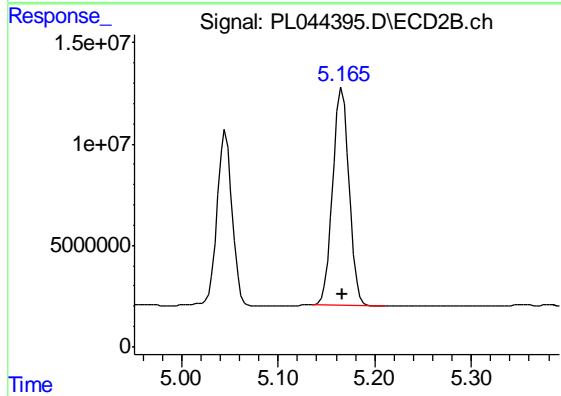
#3 gamma-BHC (Lindane)

R.T.: 4.659 min
 Delta R.T.: 0.000 min
 Response: 122387260
 Conc: 46.29 ng/ml



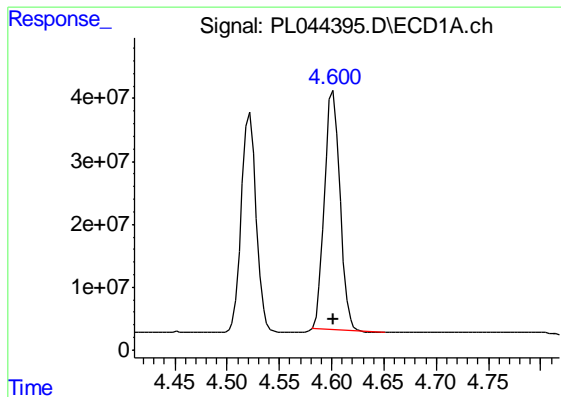
#4 Heptachlor

R.T.: 4.361 min
 Delta R.T.: 0.000 min
 Response: 420752145
 Conc: 53.37 ng/ml



#4 Heptachlor

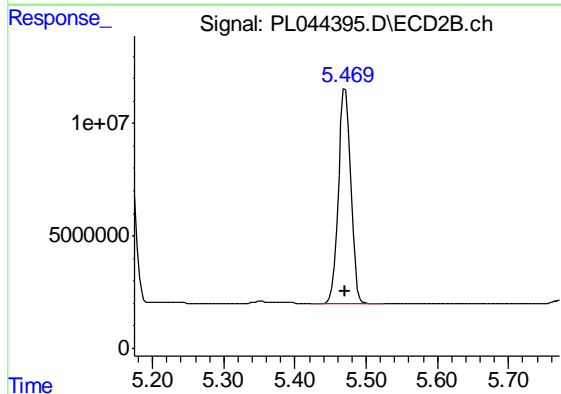
R.T.: 5.166 min
 Delta R.T.: 0.000 min
 Response: 122623432
 Conc: 47.25 ng/ml



#5 Aldrin

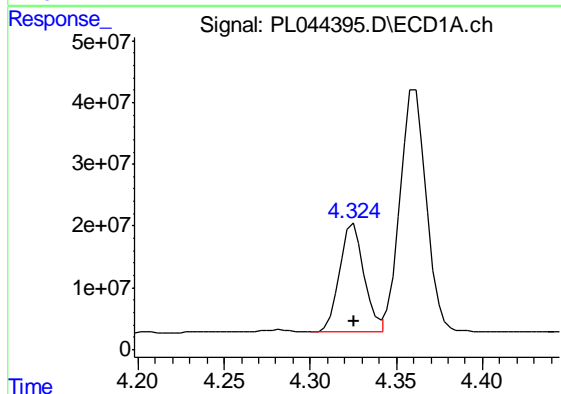
R.T.: 4.602 min
 Delta R.T.: 0.000 min
 Response: 393019470
 Conc: 50.34 ng/ml

Instrument :
 ECD_L
 ClientSampled :
 PSTDCCC050



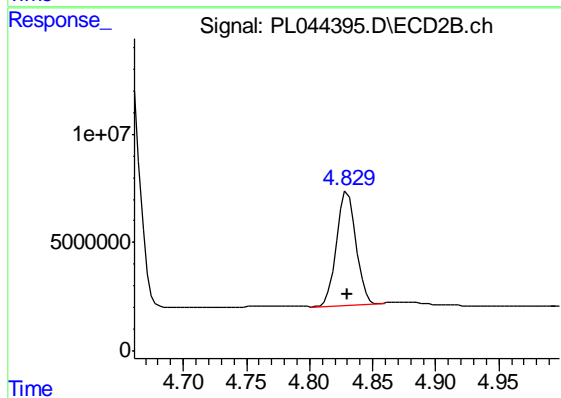
#5 Aldrin

R.T.: 5.471 min
 Delta R.T.: 0.000 min
 Response: 115482714
 Conc: 45.90 ng/ml



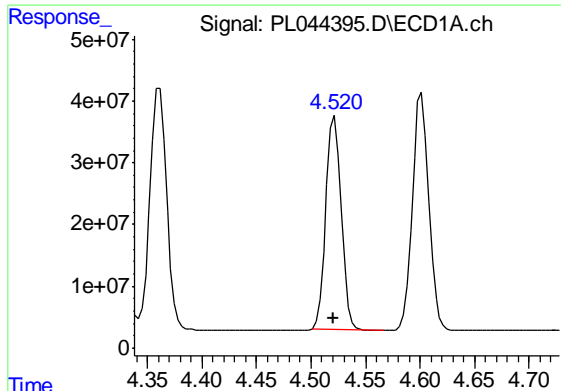
#6 beta-BHC

R.T.: 4.325 min
 Delta R.T.: 0.000 min
 Response: 175733719
 Conc: 50.69 ng/ml



#6 beta-BHC

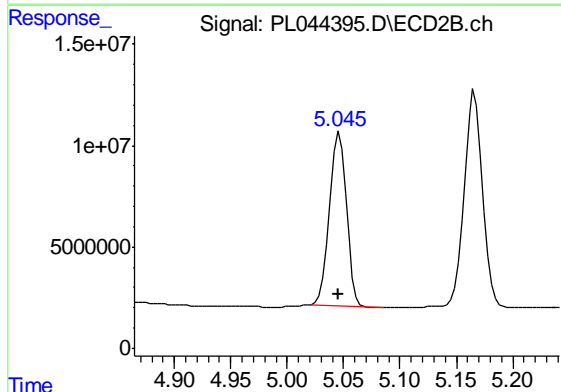
R.T.: 4.830 min
 Delta R.T.: 0.000 min
 Response: 56714528
 Conc: 48.06 ng/ml



#7 delta-BHC

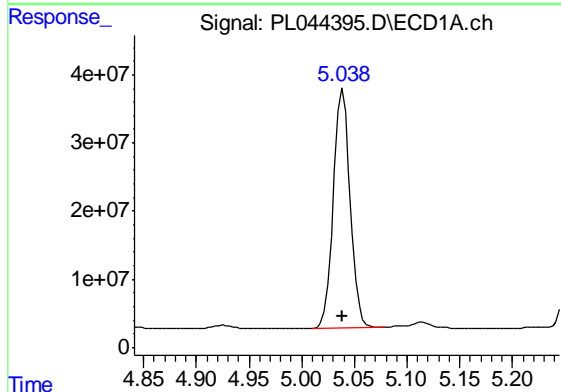
R.T.: 4.522 min
 Delta R.T.: 0.000 min
 Response: 341136998
 Conc: 52.48 ng/ml

Instrument :
 ECD_L
 ClientSampleId :
 PSTDCCC050



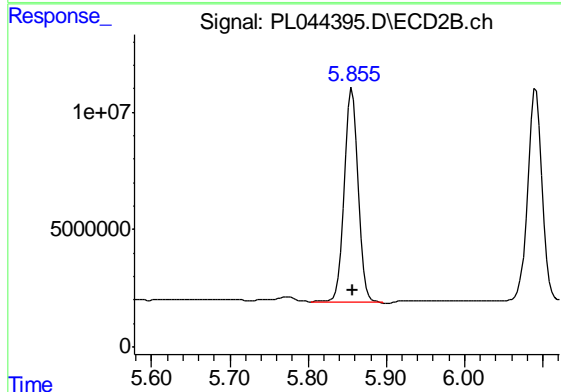
#7 delta-BHC

R.T.: 5.046 min
 Delta R.T.: 0.000 min
 Response: 89796462
 Conc: 47.24 ng/ml



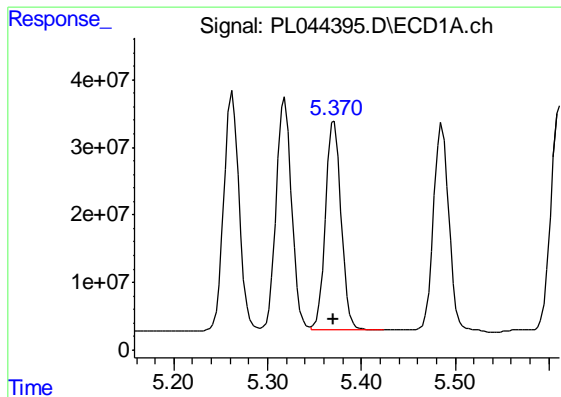
#8 Heptachlor epoxide

R.T.: 5.039 min
 Delta R.T.: 0.000 min
 Response: 386529040
 Conc: 51.19 ng/ml



#8 Heptachlor epoxide

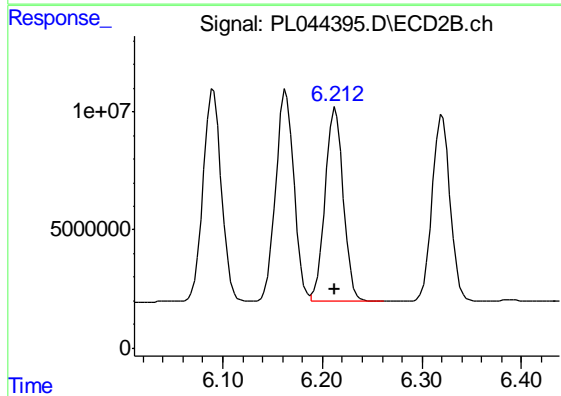
R.T.: 5.856 min
 Delta R.T.: 0.000 min
 Response: 114454099
 Conc: 49.49 ng/ml



#9 Endosulfan I

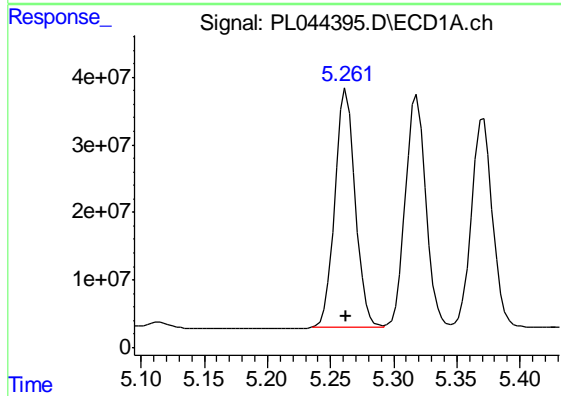
R.T.: 5.371 min
Delta R.T.: 0.000 min
Response: 358720008
Conc: 50.92 ng/ml

Instrument :
ECD_L
ClientSampleId :
PSTDCCC050



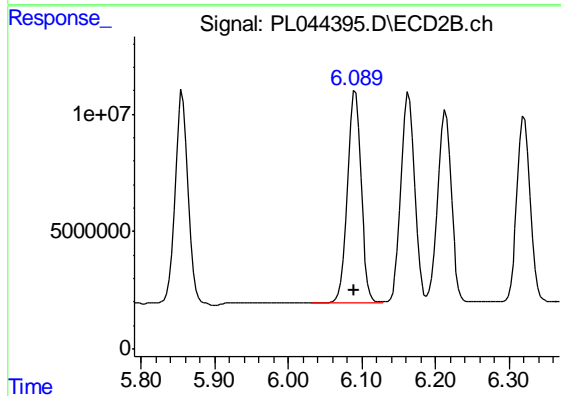
#9 Endosulfan I

R.T.: 6.213 min
Delta R.T.: 0.000 min
Response: 103703339
Conc: 44.79 ng/ml



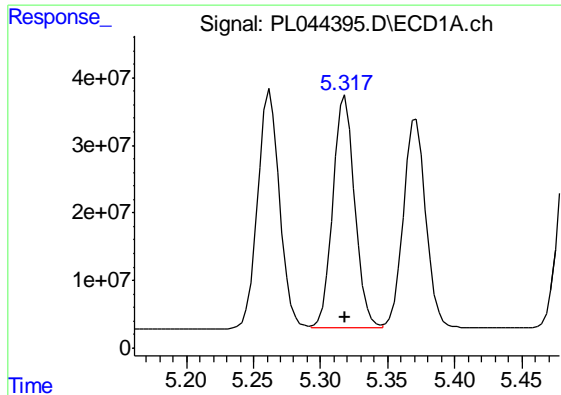
#10 gamma-Chlordane

R.T.: 5.263 min
Delta R.T.: 0.000 min
Response: 395937750
Conc: 51.12 ng/ml



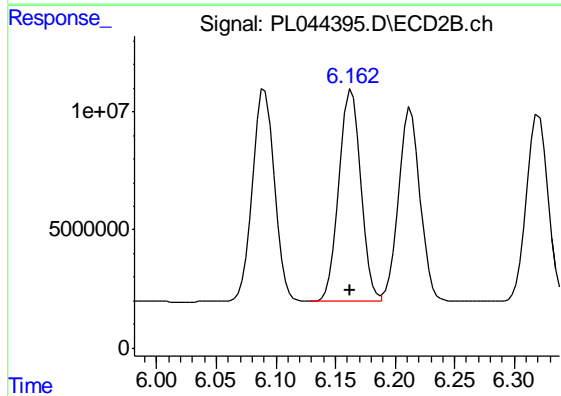
#10 gamma-Chlordane

R.T.: 6.091 min
Delta R.T.: 0.000 min
Response: 114221161
Conc: 45.27 ng/ml

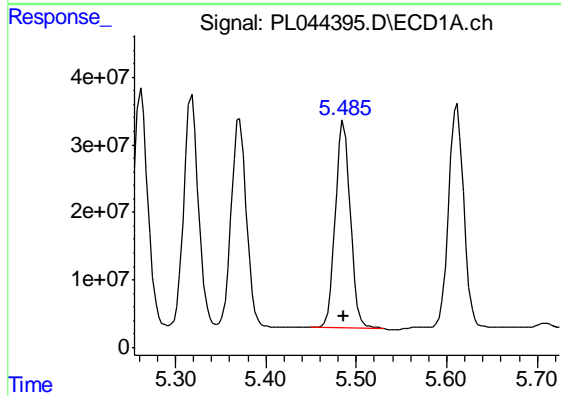


#11 alpha-Chlordane
 R.T.: 5.318 min
 Delta R.T.: 0.000 min
 Response: 389446771
 Conc: 51.11 ng/ml

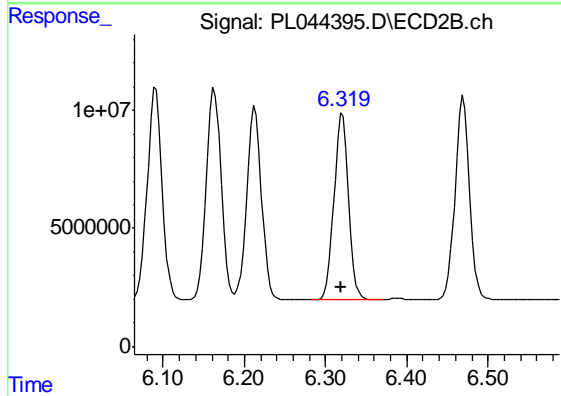
Instrument :
 ECD_L
 ClientSampleId :
 PSTDCCC050



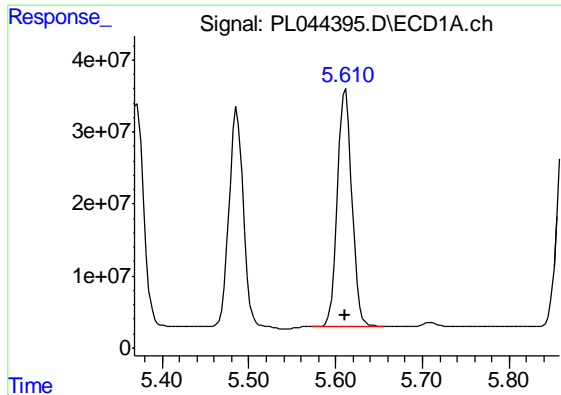
#11 alpha-Chlordane
 R.T.: 6.163 min
 Delta R.T.: 0.001 min
 Response: 113191615
 Conc: 44.99 ng/ml



#12 4,4'-DDE
 R.T.: 5.486 min
 Delta R.T.: 0.000 min
 Response: 348957258
 Conc: 51.52 ng/ml



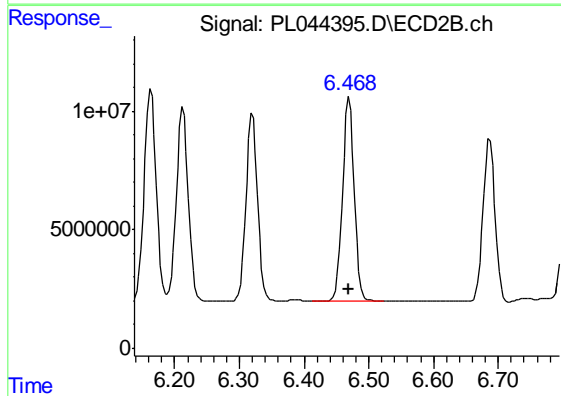
#12 4,4'-DDE
 R.T.: 6.321 min
 Delta R.T.: 0.000 min
 Response: 98406615
 Conc: 45.85 ng/ml



#13 Dieldrin

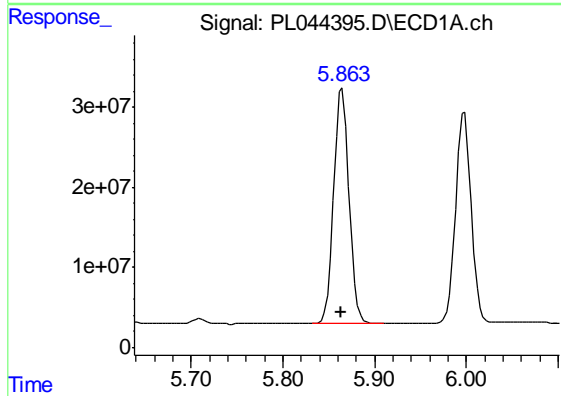
R.T.: 5.612 min
 Delta R.T.: 0.000 min
 Response: 386143011
 Conc: 51.38 ng/ml

Instrument :
 ECD_L
 ClientSampleId :
 PSTDCCC050



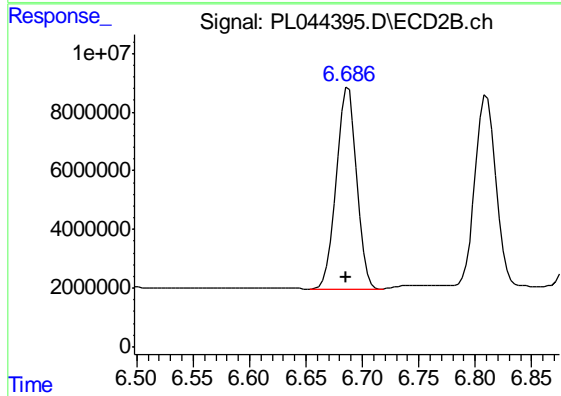
#13 Dieldrin

R.T.: 6.470 min
 Delta R.T.: 0.000 min
 Response: 106974760
 Conc: 44.65 ng/ml



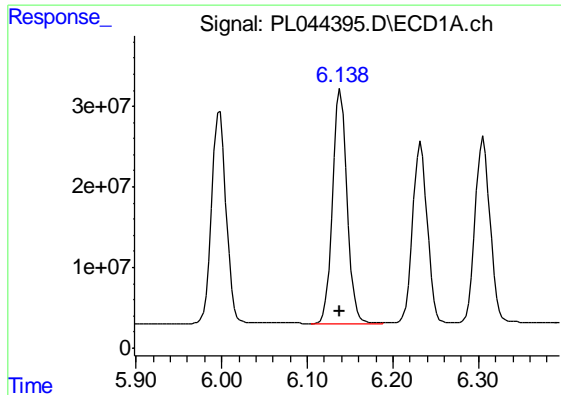
#14 Endrin

R.T.: 5.865 min
 Delta R.T.: 0.000 min
 Response: 343383011
 Conc: 51.21 ng/ml



#14 Endrin

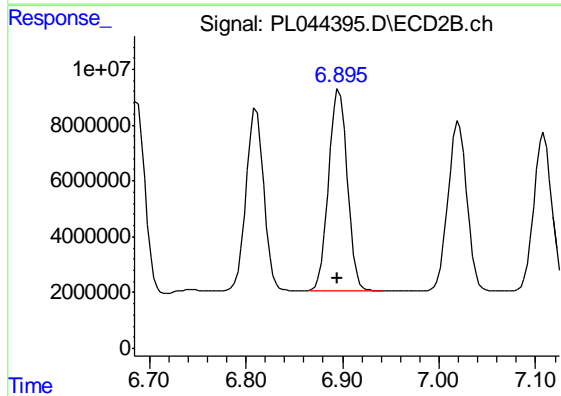
R.T.: 6.687 min
 Delta R.T.: 0.001 min
 Response: 88771253
 Conc: 44.05 ng/ml



#15 Endosulfan II

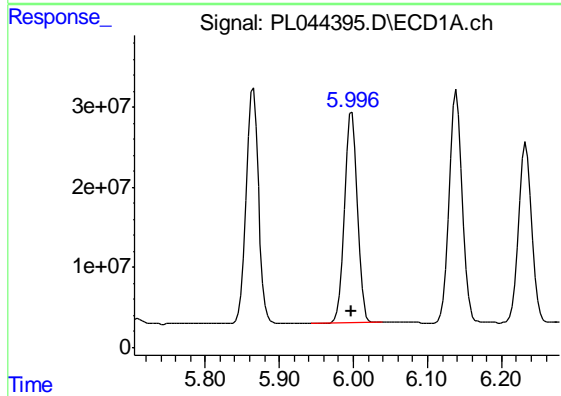
R.T.: 6.139 min
 Delta R.T.: 0.000 min
 Response: 343024535
 Conc: 50.84 ng/ml

Instrument :
 ECD_L
 ClientSampleId :
 PSTDCCC050



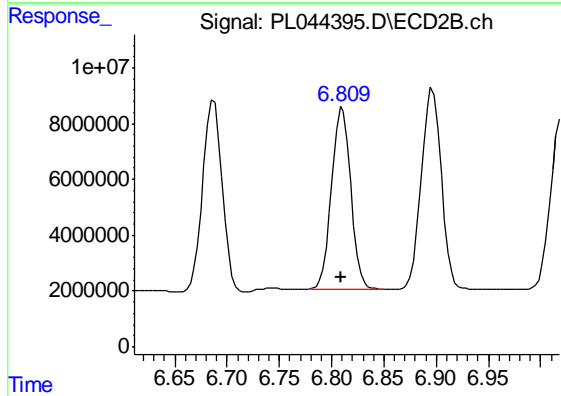
#15 Endosulfan II

R.T.: 6.897 min
 Delta R.T.: 0.002 min
 Response: 94630323
 Conc: 44.81 ng/ml



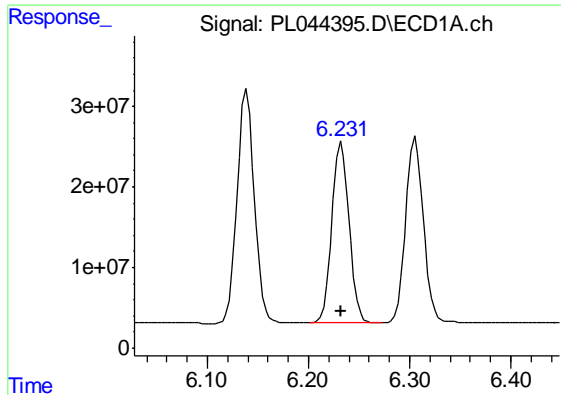
#16 4,4'-DDD

R.T.: 5.998 min
 Delta R.T.: 0.000 min
 Response: 307488053
 Conc: 55.34 ng/ml



#16 4,4'-DDD

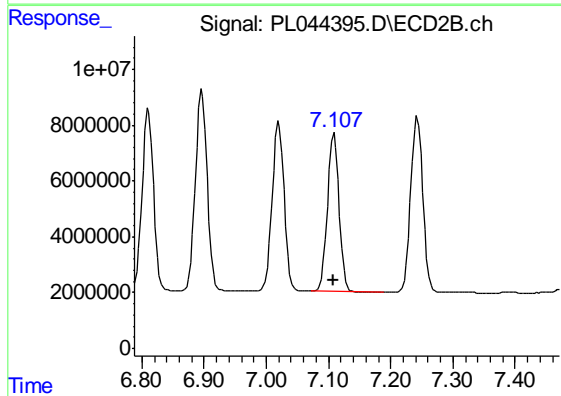
R.T.: 6.811 min
 Delta R.T.: 0.000 min
 Response: 83219093
 Conc: 48.53 ng/ml



#17 4,4'-DDT

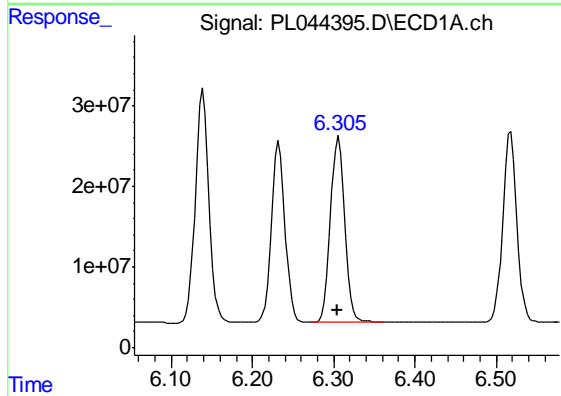
R.T.: 6.233 min
 Delta R.T.: 0.000 min
 Response: 264750815
 Conc: 51.93 ng/ml

Instrument :
 ECD_L
 ClientSampleId :
 PSTDCCC050



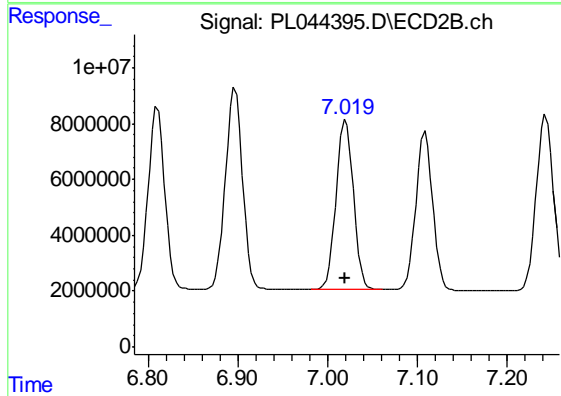
#17 4,4'-DDT

R.T.: 7.109 min
 Delta R.T.: 0.002 min
 Response: 73734957
 Conc: 44.93 ng/ml



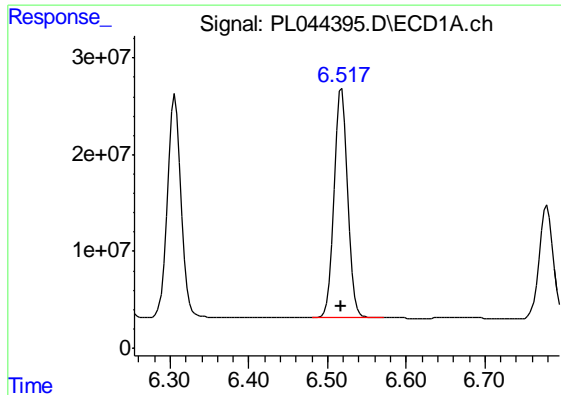
#18 Endrin aldehyde

R.T.: 6.306 min
 Delta R.T.: 0.000 min
 Response: 279750812
 Conc: 49.47 ng/ml



#18 Endrin aldehyde

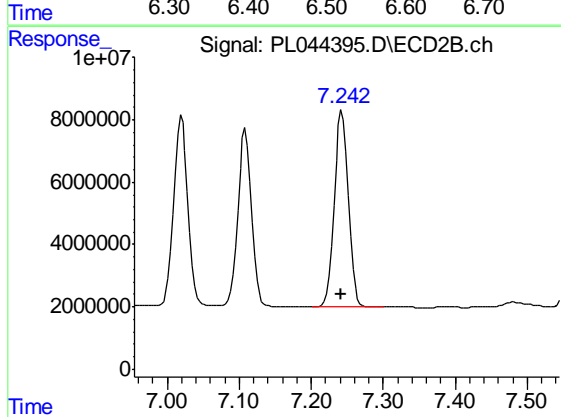
R.T.: 7.020 min
 Delta R.T.: 0.000 min
 Response: 81921608
 Conc: 42.95 ng/ml



#19 Endosulfan Sulfate

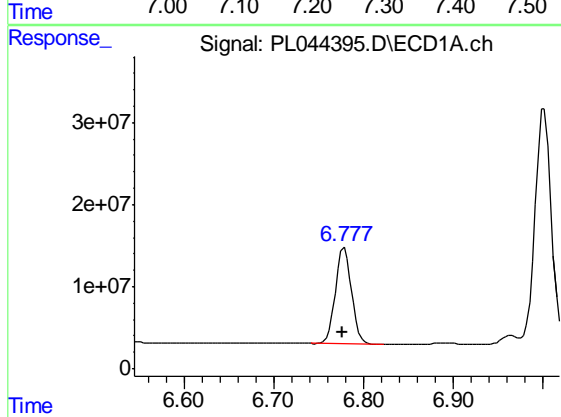
R.T.: 6.518 min
 Delta R.T.: 0.001 min
 Response: 290817455
 Conc: 50.99 ng/ml

Instrument :
 ECD_L
 ClientSampleId :
 PSTDCCC050



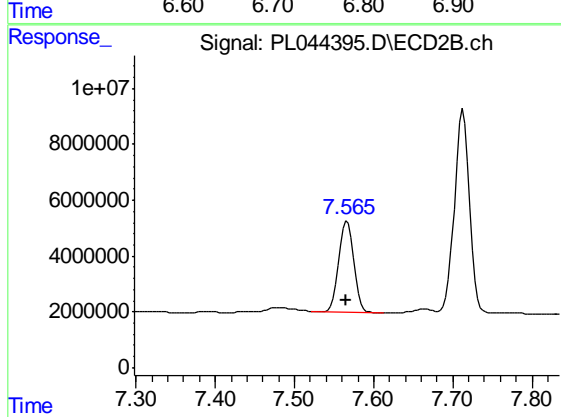
#19 Endosulfan Sulfate

R.T.: 7.243 min
 Delta R.T.: 0.001 min
 Response: 85004923
 Conc: 44.21 ng/ml



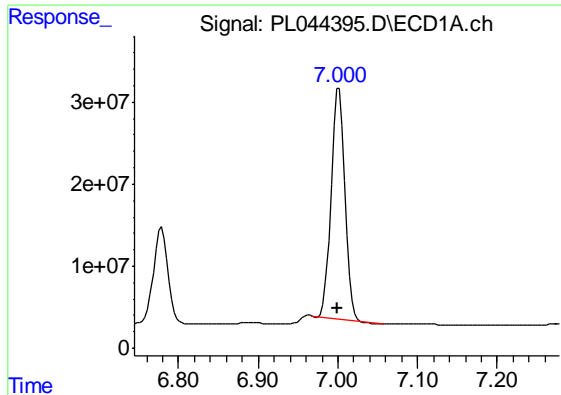
#20 Methoxychlor

R.T.: 6.779 min
 Delta R.T.: 0.002 min
 Response: 147308303
 Conc: 49.68 ng/ml



#20 Methoxychlor

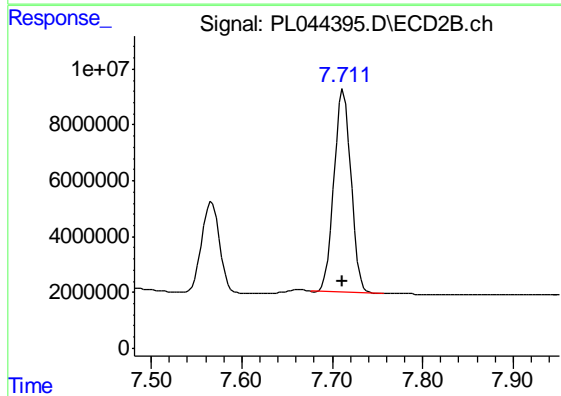
R.T.: 7.567 min
 Delta R.T.: 0.002 min
 Response: 44259073
 Conc: 43.27 ng/ml



#21 Endrin ketone

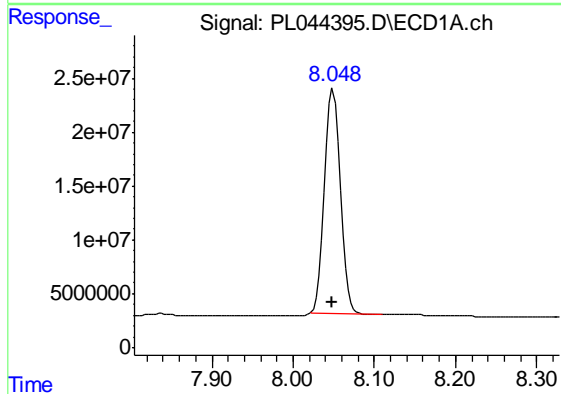
R.T.: 7.001 min
 Delta R.T.: 0.001 min
 Response: 339937862
 Conc: 48.83 ng/ml

Instrument :
 ECD_L
 ClientSampleId :
 PSTDCCC050



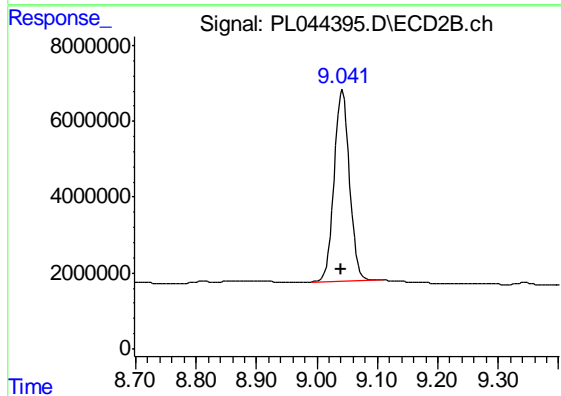
#21 Endrin ketone

R.T.: 7.713 min
 Delta R.T.: 0.002 min
 Response: 93904919
 Conc: 44.01 ng/ml



#28 Decachlorobiphenyl

R.T.: 8.049 min
 Delta R.T.: 0.002 min
 Response: 285291846
 Conc: 41.14 ng/ml



#28 Decachlorobiphenyl

R.T.: 9.042 min
 Delta R.T.: 0.003 min
 Response: 89541034
 Conc: 40.36 ng/ml