

Data Path : Z:\pestpcbsrv\HPCHEM1\ECD_L\Data\PL020123\
 Data File : PL080667.D
 Signal(s) : Signal #1: ECD1A.ch Signal #2: ECD2B.ch
 Acq On : 01 Feb 2023 13:10
 Operator : AR\AJ
 Sample : 01358-06
 Misc :
 ALS Vial : 14 Sample Multiplier: 1

Instrument :
 ECD_L
 ClientSampleId :

Integration File signal 1: autoint1.e
 Integration File signal 2: autoint2.e
 Quant Time: Feb 01 20:53:02 2023
 Quant Method : Z:\pestpcbsrv\HPCHEM1\ECD_L\methods\PL012023.M
 Quant Title : GC Extractables
 QLast Update : Sun Jan 22 23:56:48 2023
 Response via : Initial Calibration
 Integrator: ChemStation

Volume Inj. : 1 µl
 Signal #1 Phase : ZB-MR2 Signal #2 Phase: ZB-MR1
 Signal #1 Info : 30M x 0.32mm x0.2 Signal #2 Info : 30M x 0.32mm x0.5µm

	Compound	RT#1	RT#2	Resp#1	Resp#2	ng/ml	ng/ml

System Monitoring Compounds							
1)	SA Tetrachlo...	3.352	2.689	33442279	33285688	15.592	15.154
28)	SA Decachlor...	8.787	7.834	30511120	37296476	17.427	15.654
Target Compounds							
2)	A alpha-BHC	0.000	3.199	0	301127	N.D.	0.095 #
3)	MA gamma-BHC...	0.000	3.542f	0	139402	N.D.	0.047 #
4)	MA Heptachlor	4.709	0.000	729704	0	0.247	N.D. #
5)	MB Aldrin	0.000	4.156	0	95563	N.D.	0.032 #
6)	B beta-BHC	4.313	3.821	469785	179684	0.344	0.135 #
7)	B delta-BHC	4.570	4.038	5182341	59131	1.790	0.020 #
8)	B Heptachlo...	0.000	4.667f	0	43090	N.D.	0.015 #
9)	A Endosulfan I	0.000	5.023	0	18417	N.D.	0.007 #
10)	B gamma-Chl...	0.000	4.899	0	135692	N.D.	0.048 #
11)	B alpha-Chl...	0.000	4.985f	0	38764	N.D.	0.014 #
12)	B 4,4'-DDE	0.000	5.130f	0	44588	N.D.	0.019 #
13)	MA Dieldrin	0.000	5.278	0	27284	N.D.	0.010 #
14)	MA Endrin	0.000	5.563	0	22587	N.D.	0.010 #
16)	A 4,4'-DDD	0.000	5.695	0	56533	N.D.	0.030 #
17)	MA 4,4'-DDT	0.000	5.938f	0	56949	N.D.	0.027 #
18)	B Endrin al...	0.000	6.019	0	27518	N.D.	0.015 #
19)	B Endosulfa...	0.000	6.225f	0	332734	N.D.	0.143 #
20)	A Methoxychlor	0.000	6.537	0	22483	N.D.	0.019 #
21)	B Endrin ke...	0.000	6.738f	0	29630	N.D.	0.012 #
22)	Mirex	0.000	6.965f	0	27511	N.D.	0.012 #
23)	Chlordane-1	0.000	3.698	0	258705	N.D.	3.177 #
24)	Chlordane-2	0.000	4.294f	0	14485	N.D.	0.161 #
25)	Chlordane-3	0.000	4.899	0	135692	N.D.	0.514 #
26)	Chlordane-4	0.000	4.985f	0	38764	N.D.	0.144 #
27)	Chlordane-5	0.000	5.638	0	278801	N.D.	3.918 #

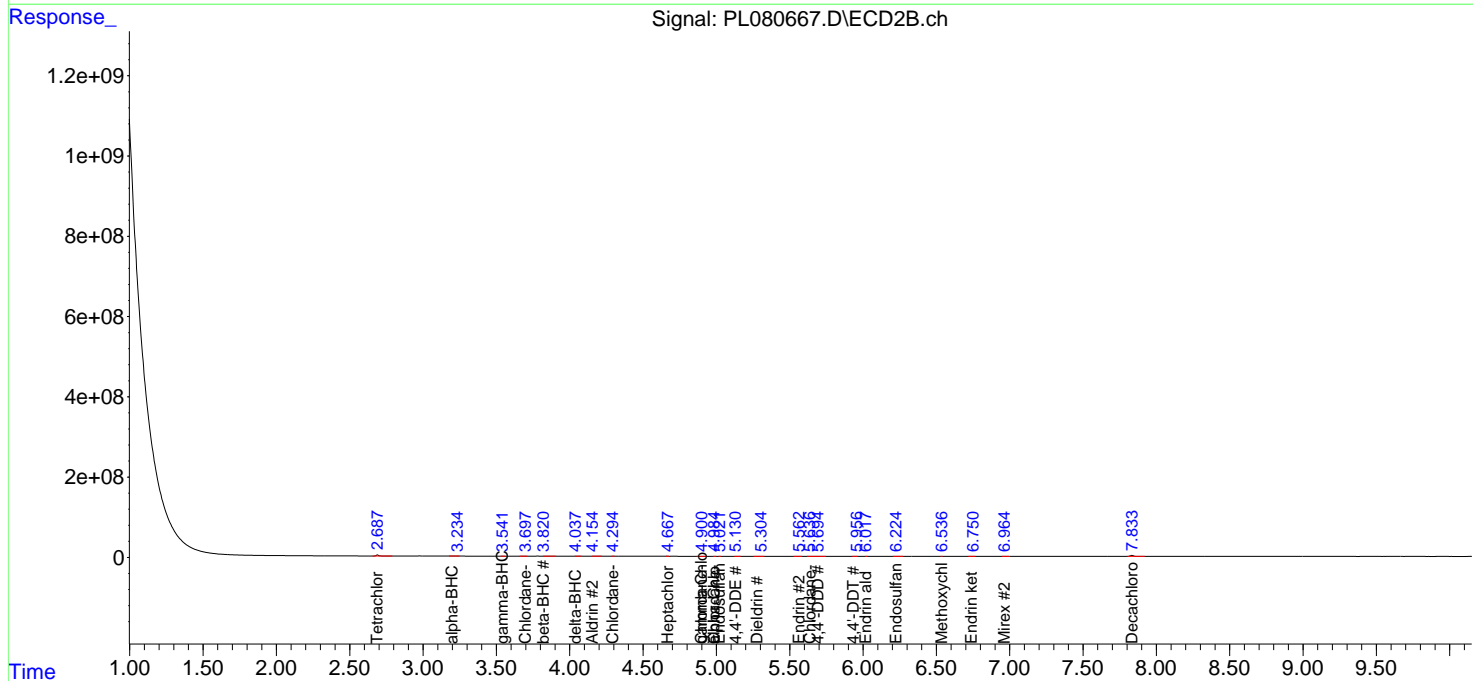
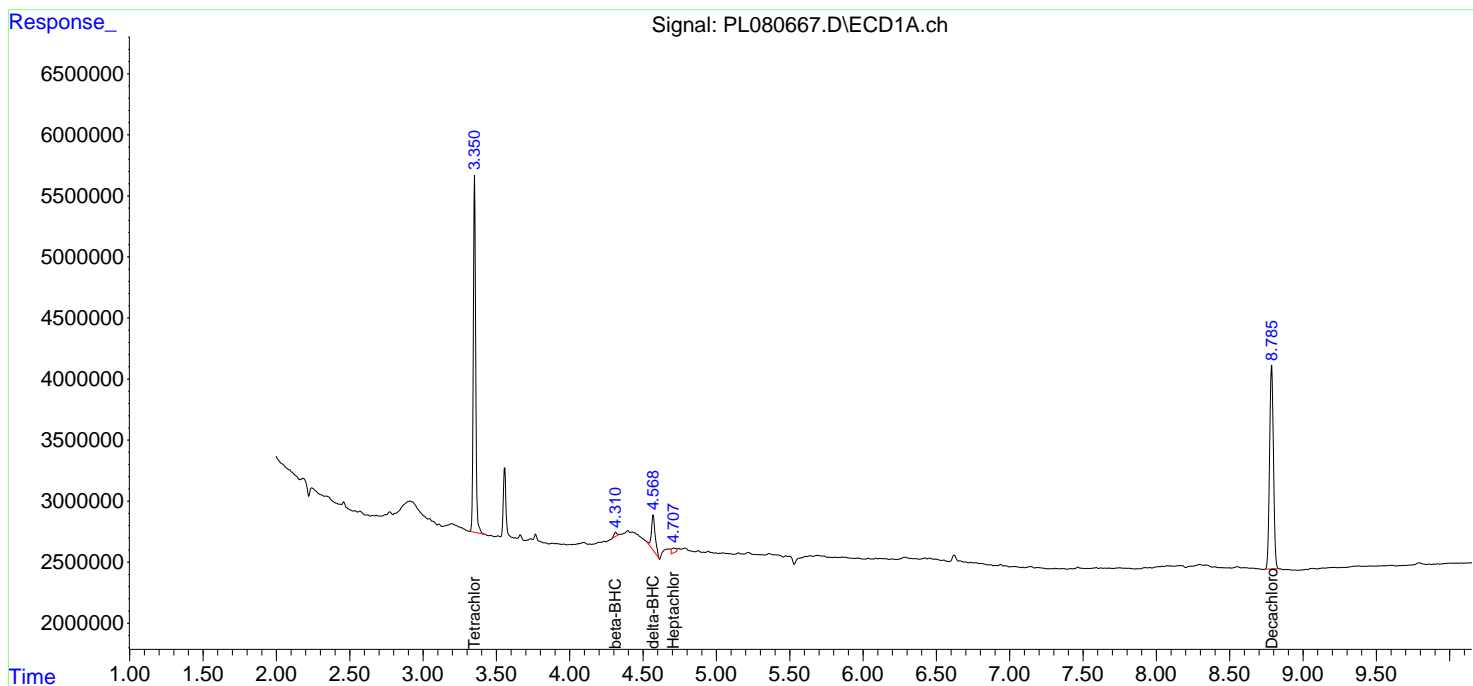
(f)=RT Delta > 1/2 Window (#)=Amounts differ by > 25% (m)=manual int.

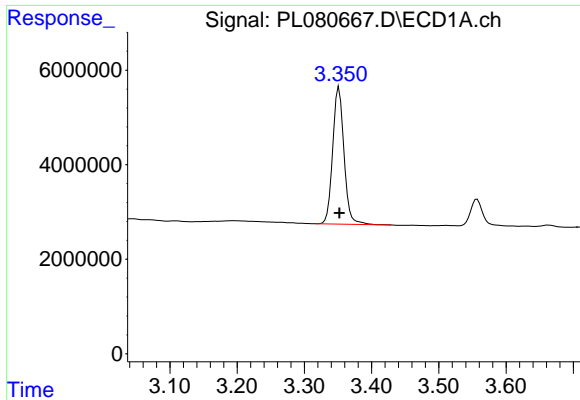
Data Path : Z:\pestpcbsrv\HPCHEM1\ECD_L\Data\PL020123\
 Data File : PL080667.D
 Signal(s) : Signal #1: ECD1A.ch Signal #2: ECD2B.ch
 Acq On : 01 Feb 2023 13:10
 Operator : AR\AJ
 Sample : 01358-06
 Misc :
 ALS Vial : 14 Sample Multiplier: 1

Instrument :
 ECD_L
 ClientSampleId :

Integration File signal 1: autoint1.e
 Integration File signal 2: autoint2.e
 Quant Time: Feb 01 20:53:02 2023
 Quant Method : Z:\pestpcbsrv\HPCHEM1\ECD_L\methods\PL012023.M
 Quant Title : GC Extractables
 QLast Update : Sun Jan 22 23:56:48 2023
 Response via : Initial Calibration
 Integrator: ChemStation

Volume Inj. : 1 µl
 Signal #1 Phase : ZB-MR2 Signal #2 Phase: ZB-MR1
 Signal #1 Info : 30M x 0.32mm x0.2 Signal #2 Info : 30M x 0.32mm x0.5µm

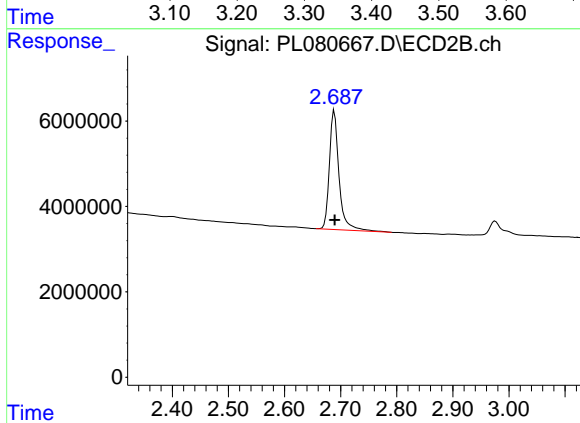




#1 Tetrachloro-m-xylene

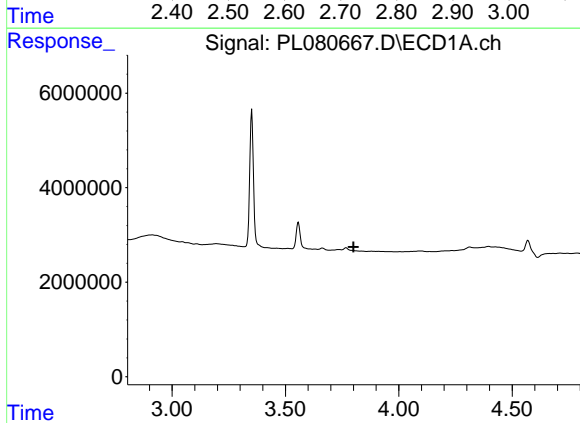
R.T.: 3.352 min
 Delta R.T.: 0.000 min
 Response: 33442279
 Conc: 15.59 ng/ml

Instrument :
 ECD_L
 ClientSampleId :



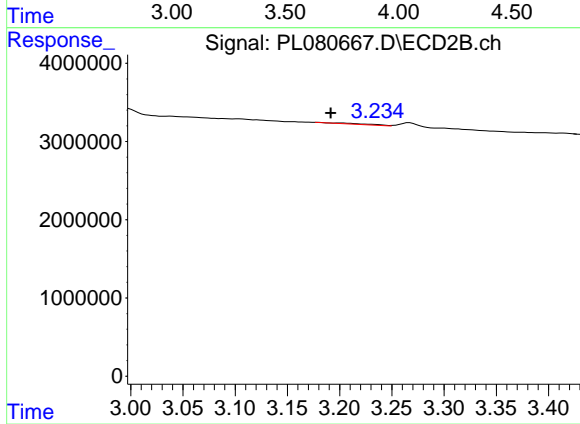
#1 Tetrachloro-m-xylene

R.T.: 2.689 min
 Delta R.T.: 0.000 min
 Response: 33285688
 Conc: 15.15 ng/ml



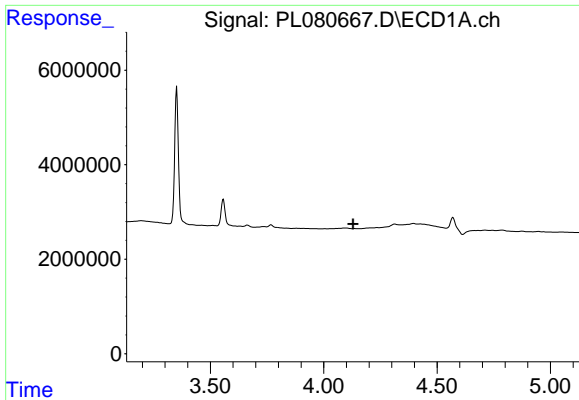
#2 alpha-BHC

R.T.: 0.000 min
 Exp R.T. : 3.801 min
 Response: 0
 Conc: N.D.



#2 alpha-BHC

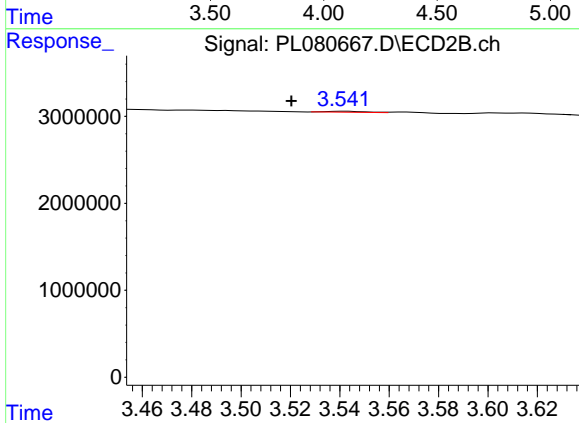
R.T.: 3.199 min
 Delta R.T.: 0.008 min
 Response: 301127
 Conc: 0.09 ng/ml



#3 gamma-BHC (Lindane)

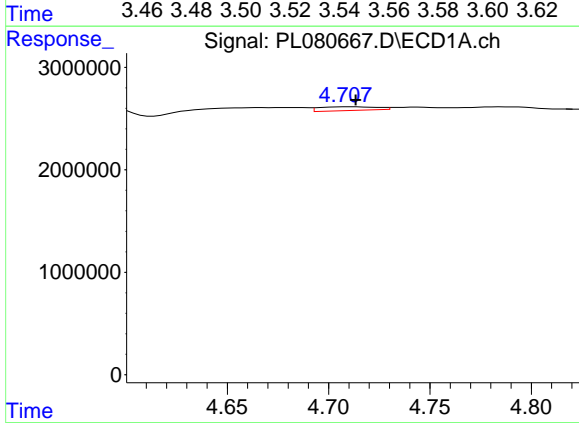
R.T.: 0.000 min
 Exp R.T.: 4.129 min
 Response: 0
 Conc: N.D.

Instrument :
 ECD_L
 ClientSampleId :



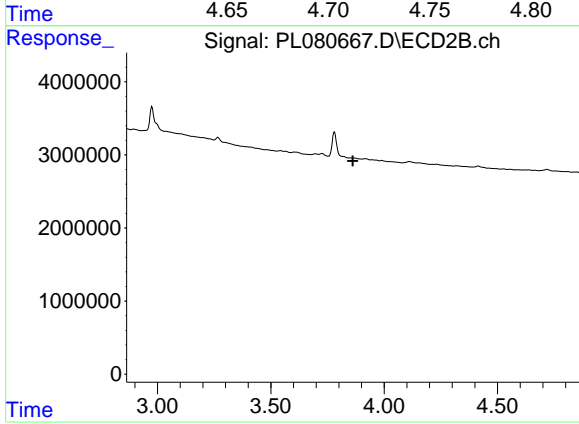
#3 gamma-BHC (Lindane)

R.T.: 3.542 min
 Delta R.T.: 0.021 min
 Response: 139402
 Conc: 0.05 ng/ml



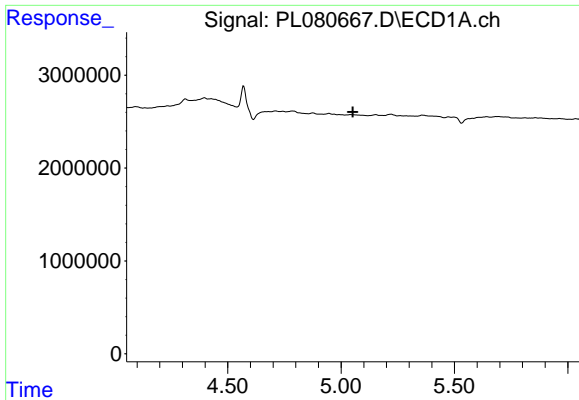
#4 Heptachlor

R.T.: 4.709 min
 Delta R.T.: -0.004 min
 Response: 729704
 Conc: 0.25 ng/ml



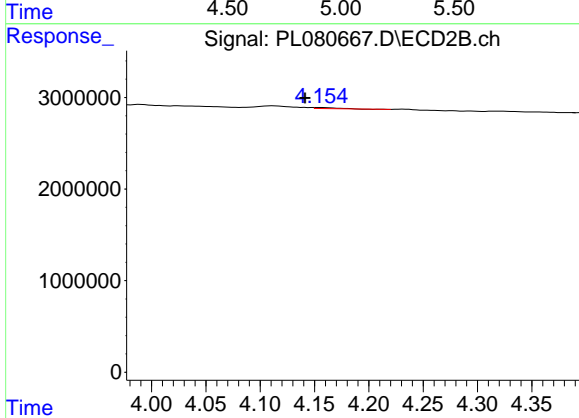
#4 Heptachlor

R.T.: 0.000 min
 Exp R.T.: 3.862 min
 Response: 0
 Conc: N.D.

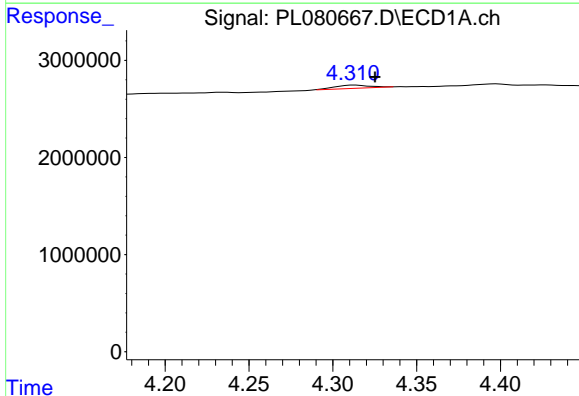


#5 Aldrin
 R.T.: 0.000 min
 Exp R.T.: 5.052 min
 Response: 0
 Conc: N.D.

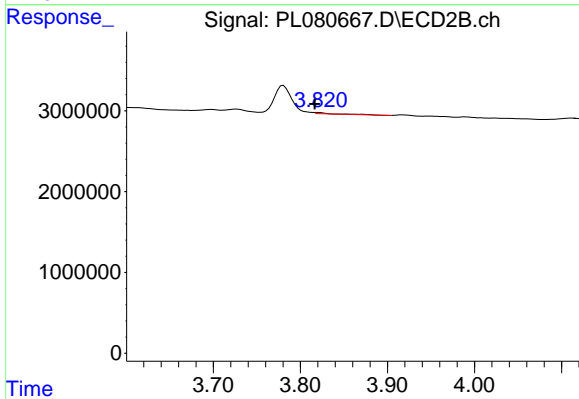
Instrument :
 ECD_L
 ClientSampleId :



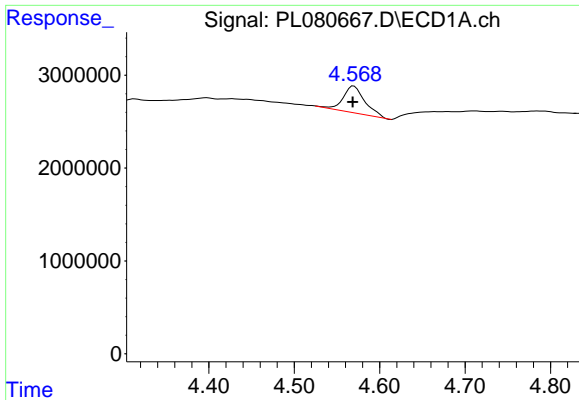
#5 Aldrin
 R.T.: 4.156 min
 Delta R.T.: 0.014 min
 Response: 95563
 Conc: 0.03 ng/ml



#6 beta-BHC
 R.T.: 4.313 min
 Delta R.T.: -0.012 min
 Response: 469785
 Conc: 0.34 ng/ml



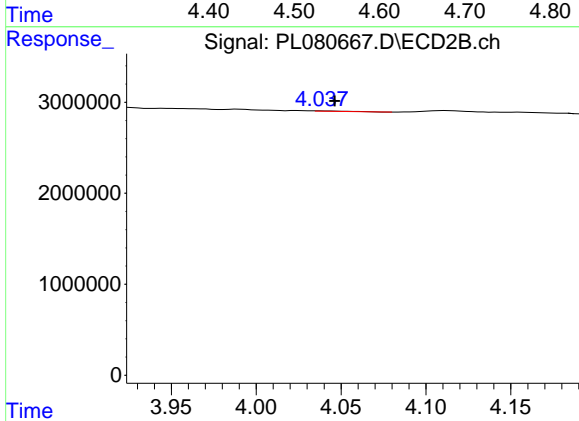
#6 beta-BHC
 R.T.: 3.821 min
 Delta R.T.: 0.004 min
 Response: 179684
 Conc: 0.13 ng/ml



#7 delta-BHC

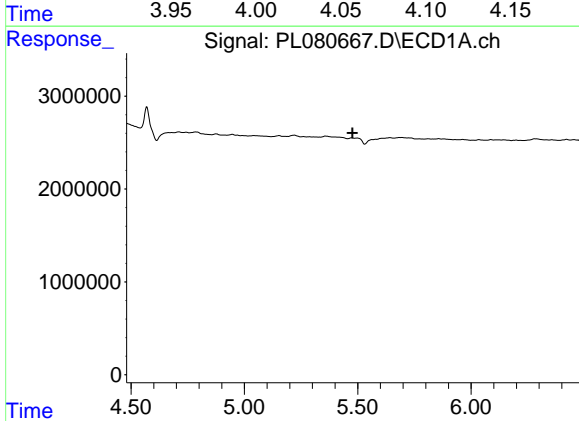
R.T.: 4.570 min
 Delta R.T.: 0.001 min
 Response: 5182341
 Conc: 1.79 ng/ml

Instrument :
 ECD_L
 ClientSampleId :



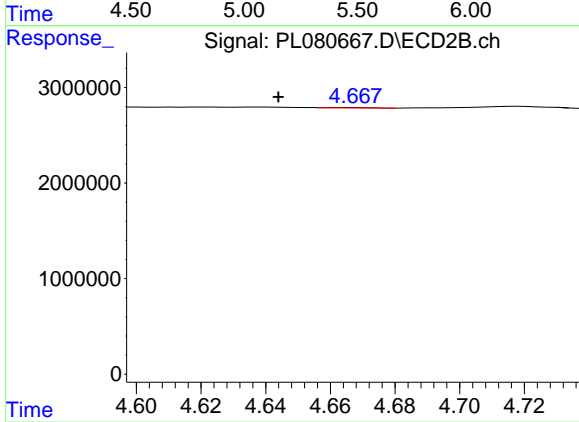
#7 delta-BHC

R.T.: 4.038 min
 Delta R.T.: -0.008 min
 Response: 59131
 Conc: 0.02 ng/ml



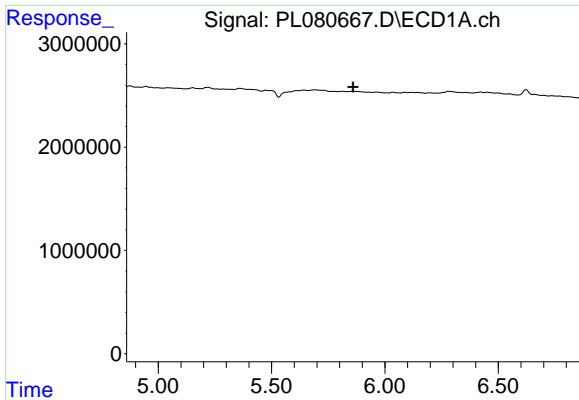
#8 Heptachlor epoxide

R.T.: 0.000 min
 Exp R.T. : 5.477 min
 Response: 0
 Conc: N.D.



#8 Heptachlor epoxide

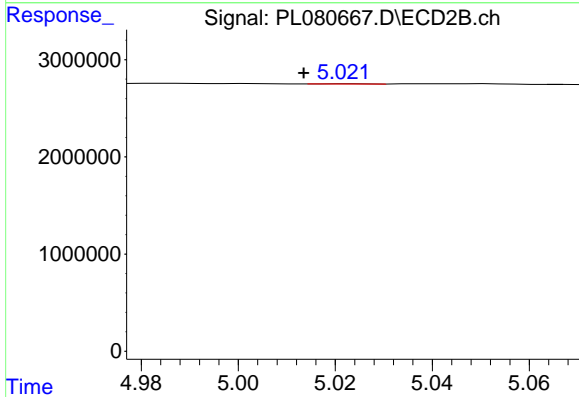
R.T.: 4.667 min
 Delta R.T.: 0.023 min
 Response: 43090
 Conc: 0.02 ng/ml



#9 Endosulfan I

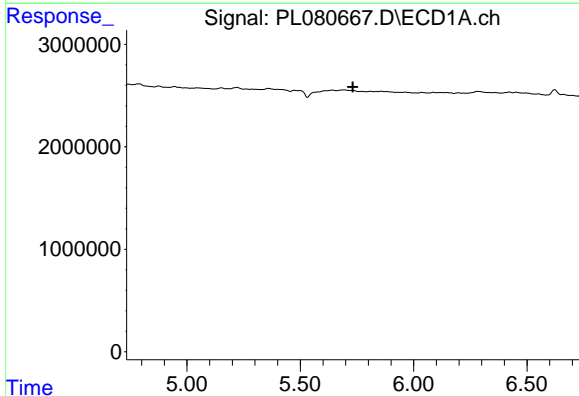
R.T.: 0.000 min
 Exp R.T.: 5.859 min
 Response: 0
 Conc: N.D.

Instrument :
 ECD_L
 ClientSampleId :



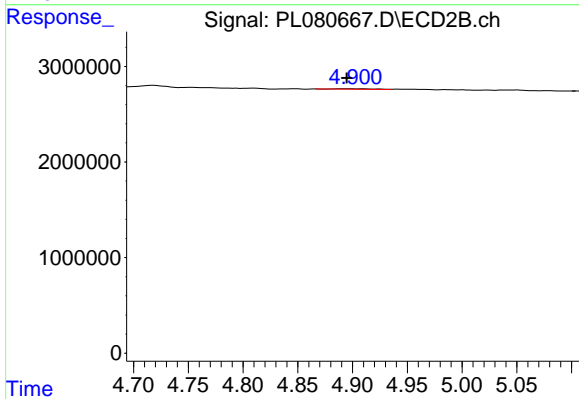
#9 Endosulfan I

R.T.: 5.023 min
 Delta R.T.: 0.009 min
 Response: 18417
 Conc: 0.01 ng/ml



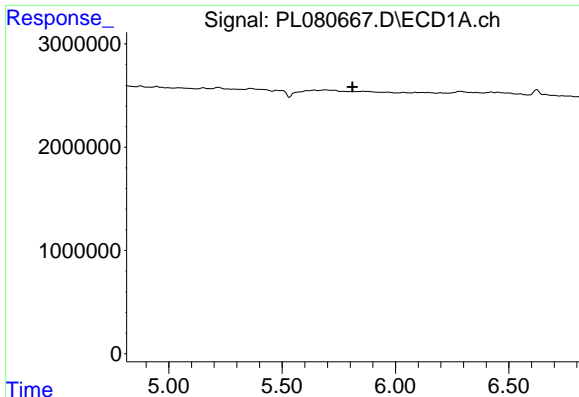
#10 gamma-Chlordane

R.T.: 0.000 min
 Exp R.T.: 5.732 min
 Response: 0
 Conc: N.D.



#10 gamma-Chlordane

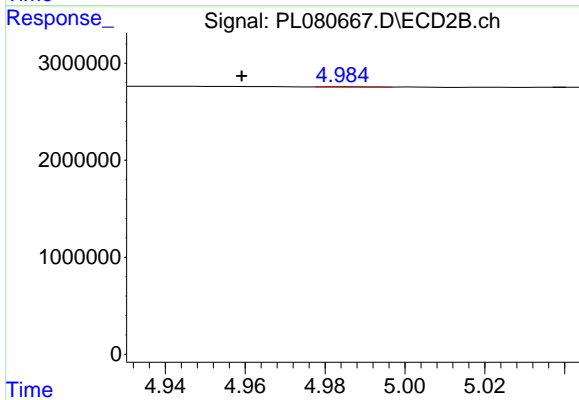
R.T.: 4.899 min
 Delta R.T.: 0.004 min
 Response: 135692
 Conc: 0.05 ng/ml



#11 alpha-Chlordane

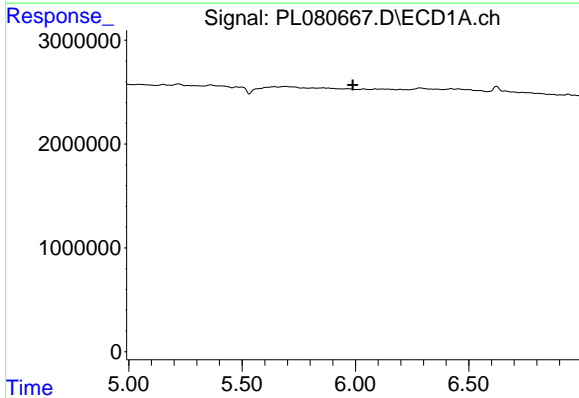
R.T.: 0.000 min
 Exp R.T. : 5.811 min
 Response: 0
 Conc: N.D.

Instrument :
 ECD_L
 ClientSampleId :



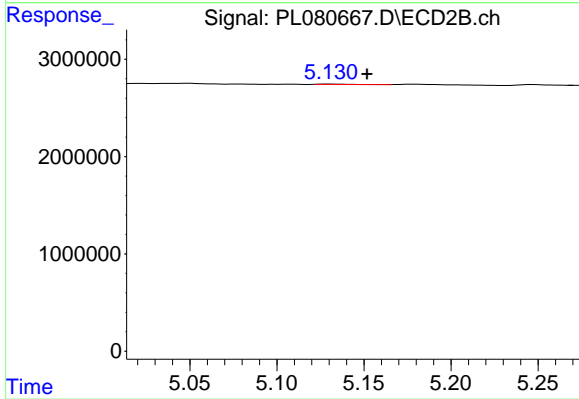
#11 alpha-Chlordane

R.T.: 4.985 min
 Delta R.T.: 0.026 min
 Response: 38764
 Conc: 0.01 ng/ml



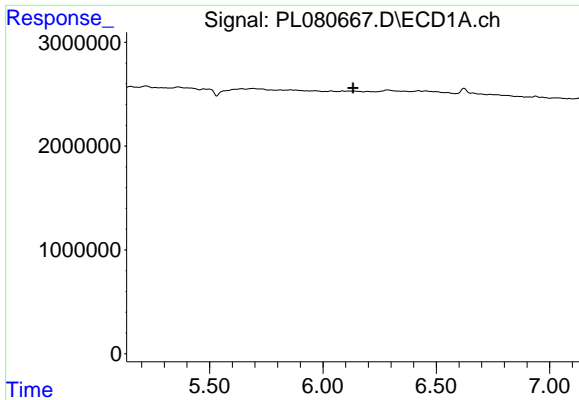
#12 4,4'-DDE

R.T.: 0.000 min
 Exp R.T. : 5.989 min
 Response: 0
 Conc: N.D.



#12 4,4'-DDE

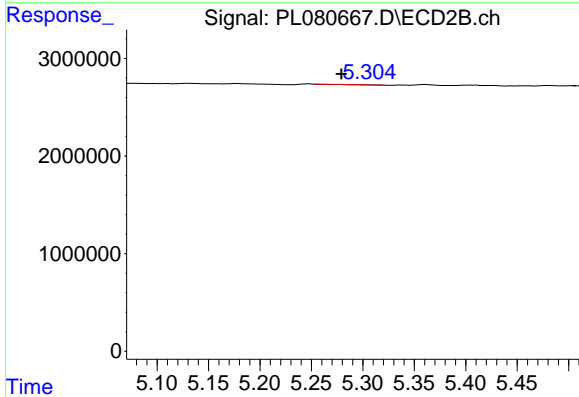
R.T.: 5.130 min
 Delta R.T.: -0.022 min
 Response: 44588
 Conc: 0.02 ng/ml



#13 Dieldrin

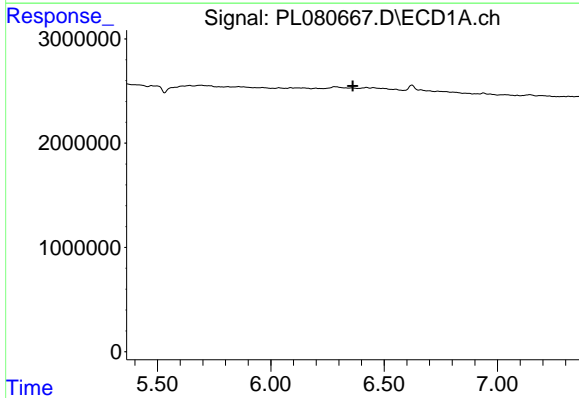
R.T.: 0.000 min
 Exp R.T. : 6.133 min
 Response: 0
 Conc: N.D.

Instrument :
 ECD_L
 ClientSampleId :



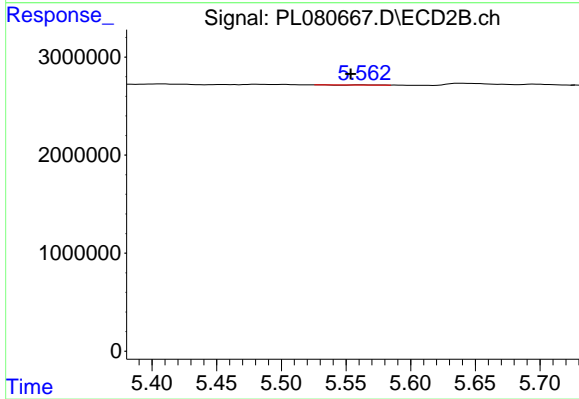
#13 Dieldrin

R.T.: 5.278 min
 Delta R.T.: -0.001 min
 Response: 27284
 Conc: 0.01 ng/ml



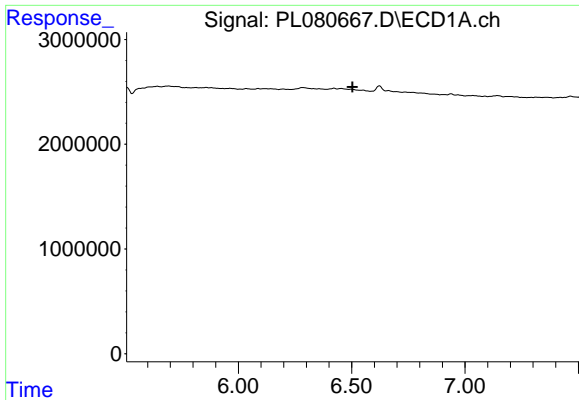
#14 Endrin

R.T.: 0.000 min
 Exp R.T. : 6.361 min
 Response: 0
 Conc: N.D.



#14 Endrin

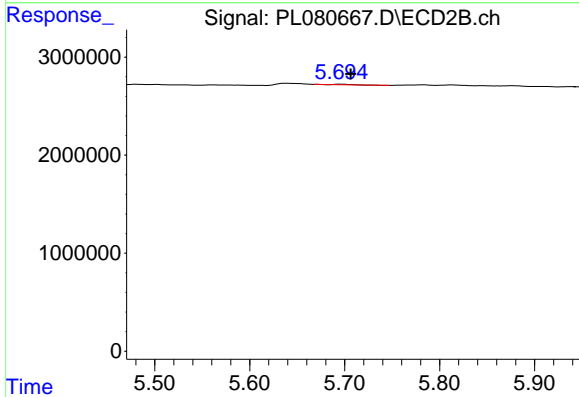
R.T.: 5.563 min
 Delta R.T.: 0.010 min
 Response: 22587
 Conc: 0.01 ng/ml



#16 4,4'-DDD

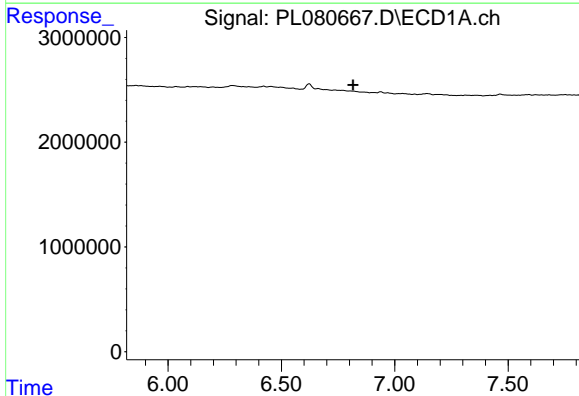
R.T.: 0.000 min
 Exp R.T.: 6.504 min
 Response: 0
 Conc: N.D.

Instrument :
 ECD_L
 ClientSampleId :



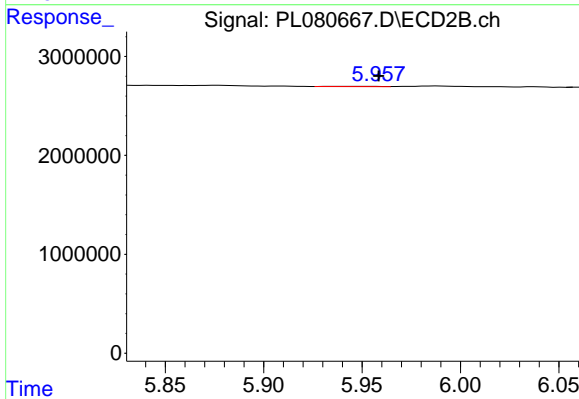
#16 4,4'-DDD

R.T.: 5.695 min
 Delta R.T.: -0.011 min
 Response: 56533
 Conc: 0.03 ng/ml



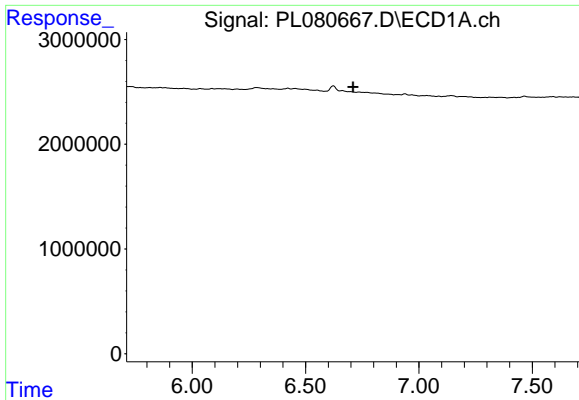
#17 4,4'-DDT

R.T.: 0.000 min
 Exp R.T.: 6.816 min
 Response: 0
 Conc: N.D.



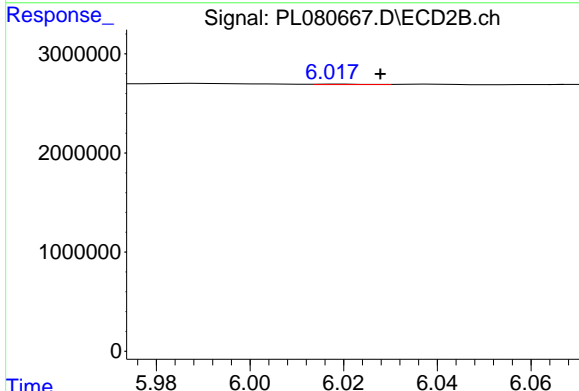
#17 4,4'-DDT

R.T.: 5.938 min
 Delta R.T.: -0.021 min
 Response: 56949
 Conc: 0.03 ng/ml

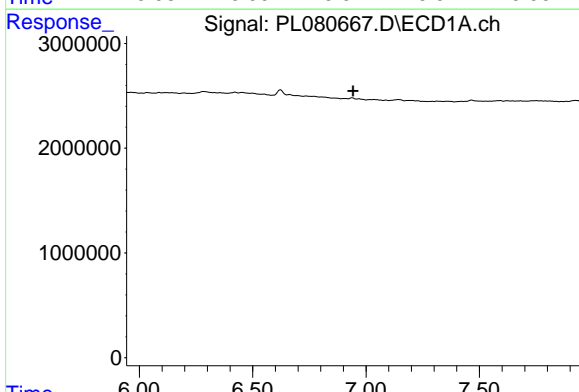


#18 Endrin aldehyde
 R.T.: 0.000 min
 Exp R.T.: 6.709 min
 Response: 0
 Conc: N.D.

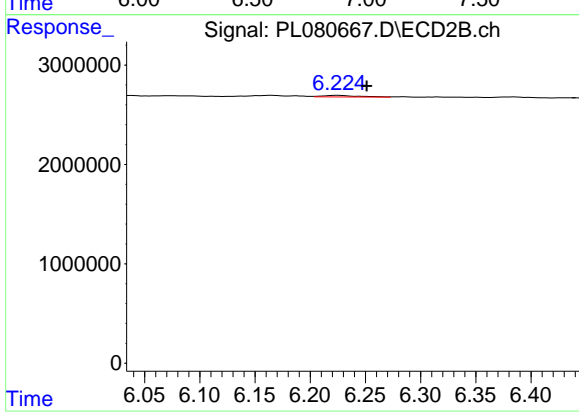
Instrument :
 ECD_L
 ClientSampleId :



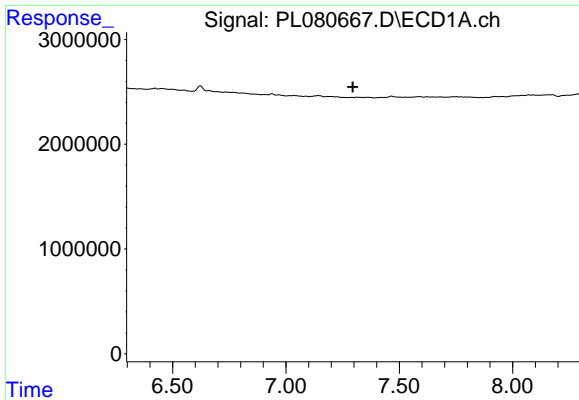
#18 Endrin aldehyde
 R.T.: 6.019 min
 Delta R.T.: -0.009 min
 Response: 27518
 Conc: 0.02 ng/ml



#19 Endosulfan Sulfate
 R.T.: 0.000 min
 Exp R.T.: 6.943 min
 Response: 0
 Conc: N.D.



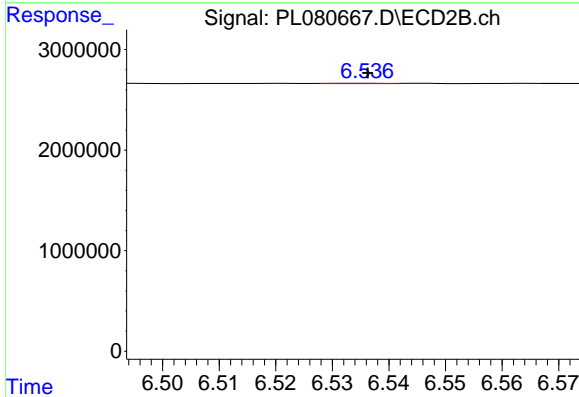
#19 Endosulfan Sulfate
 R.T.: 6.225 min
 Delta R.T.: -0.026 min
 Response: 332734
 Conc: 0.14 ng/ml



#20 Methoxychlor

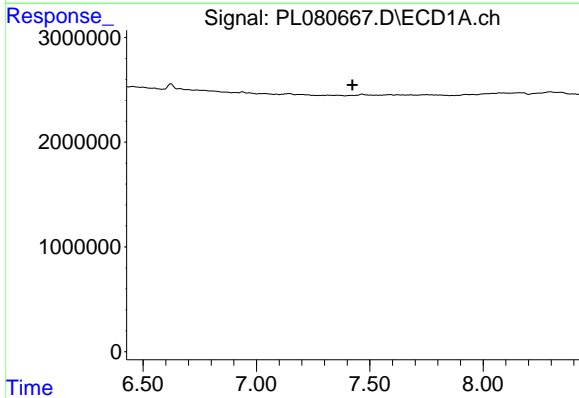
R.T.: 0.000 min
 Exp R.T.: 7.294 min
 Response: 0
 Conc: N.D.

Instrument :
 ECD_L
 ClientSampleId :



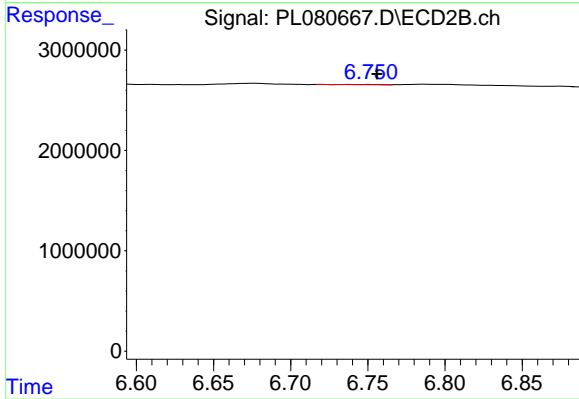
#20 Methoxychlor

R.T.: 6.537 min
 Delta R.T.: 0.000 min
 Response: 22483
 Conc: 0.02 ng/ml



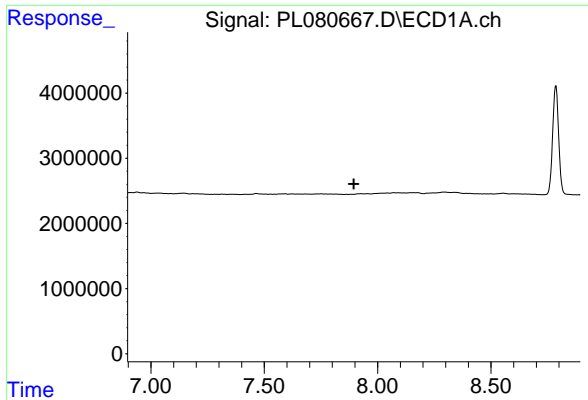
#21 Endrin ketone

R.T.: 0.000 min
 Exp R.T.: 7.424 min
 Response: 0
 Conc: N.D.



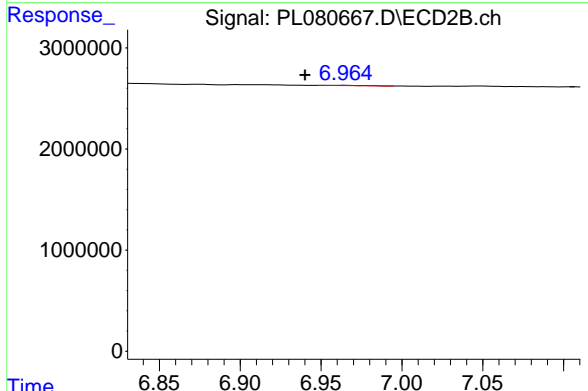
#21 Endrin ketone

R.T.: 6.738 min
 Delta R.T.: -0.018 min
 Response: 29630
 Conc: 0.01 ng/ml

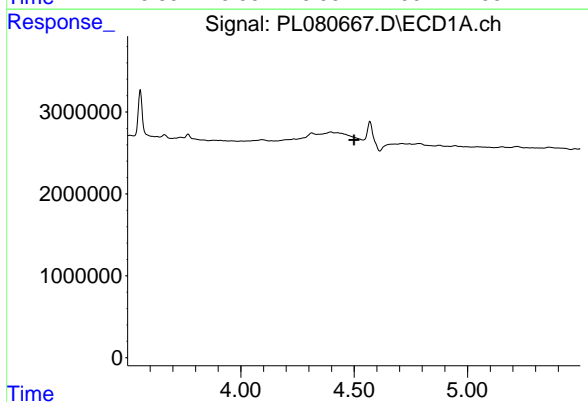


#22 Mirex
 R.T.: 0.000 min
 Exp R.T.: 7.896 min
 Response: 0
 Conc: N.D.

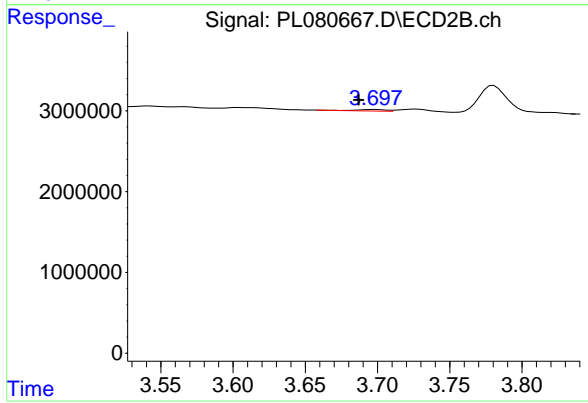
Instrument :
 ECD_L
 ClientSampleId :



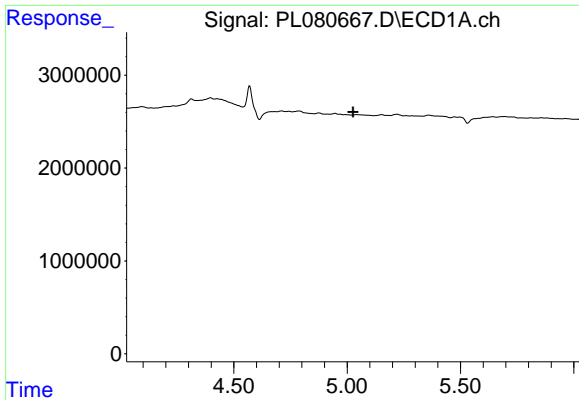
#22 Mirex
 R.T.: 6.965 min
 Delta R.T.: 0.024 min
 Response: 27511
 Conc: 0.01 ng/ml



#23 Chlordane-1
 R.T.: 0.000 min
 Exp R.T.: 4.500 min
 Response: 0
 Conc: N.D.



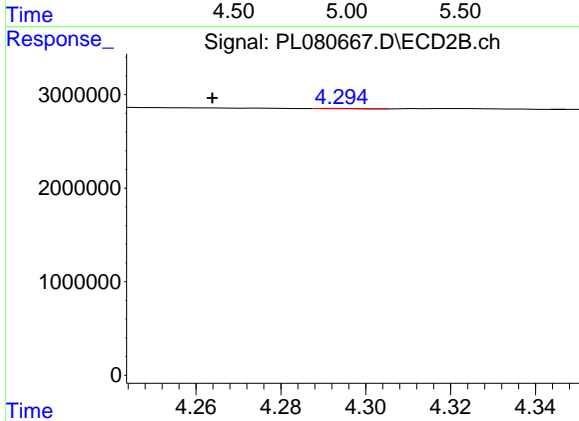
#23 Chlordane-1
 R.T.: 3.698 min
 Delta R.T.: 0.011 min
 Response: 258705
 Conc: 3.18 ng/ml



#24 Chlordane-2

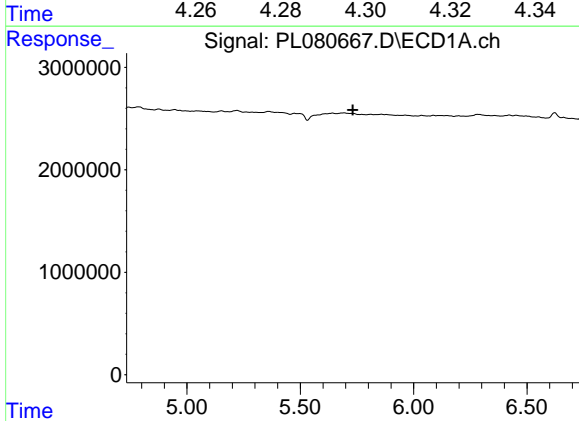
R.T.: 0.000 min
 Exp R.T.: 5.027 min
 Response: 0
 Conc: N.D.

Instrument :
 ECD_L
 ClientSampleId :



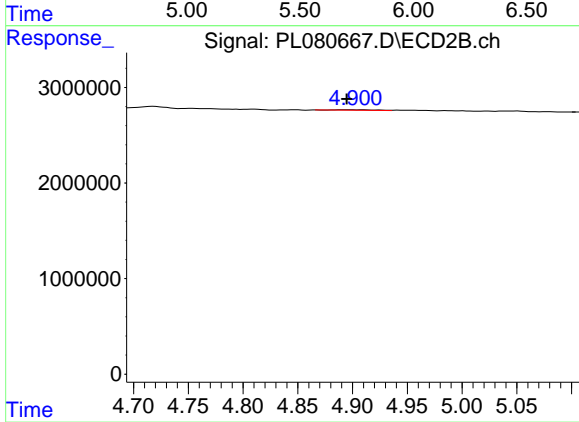
#24 Chlordane-2

R.T.: 4.294 min
 Delta R.T.: 0.030 min
 Response: 14485
 Conc: 0.16 ng/ml



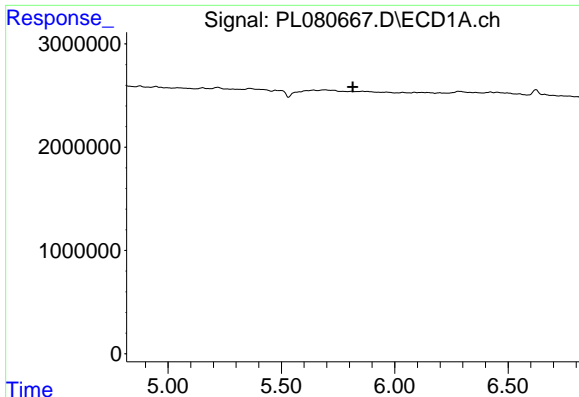
#25 Chlordane-3

R.T.: 0.000 min
 Exp R.T.: 5.732 min
 Response: 0
 Conc: N.D.



#25 Chlordane-3

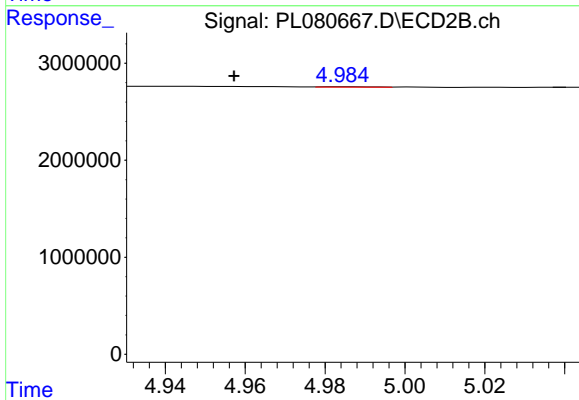
R.T.: 4.899 min
 Delta R.T.: 0.004 min
 Response: 135692
 Conc: 0.51 ng/ml



#26 Chlordane-4

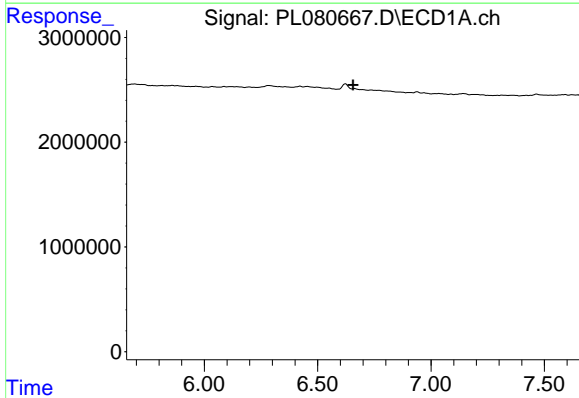
R.T.: 0.000 min
 Exp R.T. : 5.815 min
 Response: 0
 Conc: N.D.

Instrument :
 ECD_L
 ClientSampleId :



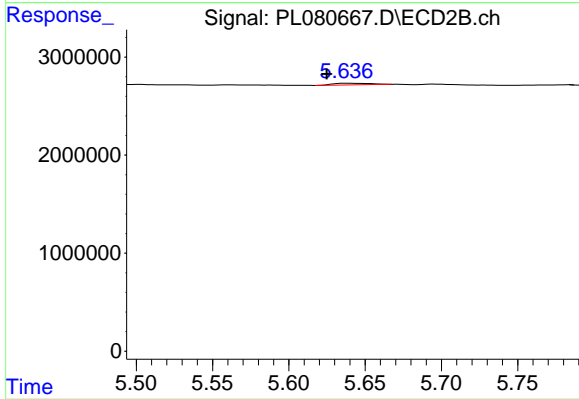
#26 Chlordane-4

R.T.: 4.985 min
 Delta R.T.: 0.028 min
 Response: 38764
 Conc: 0.14 ng/ml



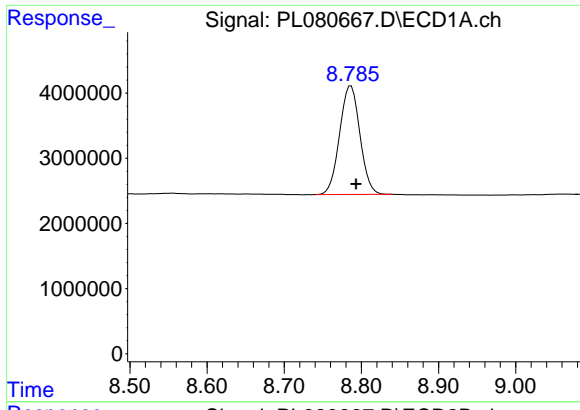
#27 Chlordane-5

R.T.: 0.000 min
 Exp R.T. : 6.656 min
 Response: 0
 Conc: N.D.



#27 Chlordane-5

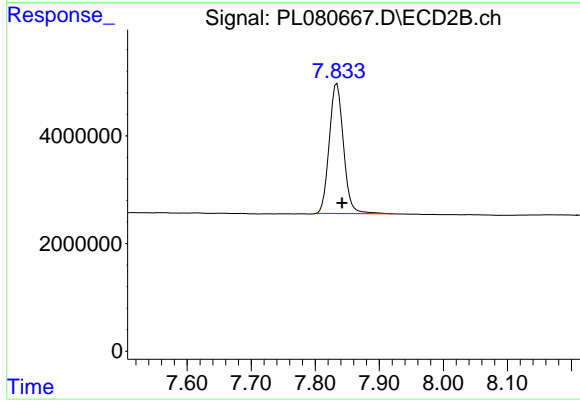
R.T.: 5.638 min
 Delta R.T.: 0.013 min
 Response: 278801
 Conc: 3.92 ng/ml



#28 Decachlorobiphenyl

R.T.: 8.787 min
Delta R.T.: -0.006 min
Response: 30511120
Conc: 17.43 ng/ml

Instrument :
ECD_L
ClientSampleId :



#28 Decachlorobiphenyl

R.T.: 7.834 min
Delta R.T.: -0.008 min
Response: 37296476
Conc: 15.65 ng/ml