

Data Path : Z:\pestpcbsrv\HPCHEM1\ECD\_L\Data\PL020123\  
 Data File : PL080660.D  
 Signal(s) : Signal #1: ECD1A.ch Signal #2: ECD2B.ch  
 Acq On : 01 Feb 2023 10:49  
 Operator : AR\AJ  
 Sample : PSTDCCC050  
 Misc :  
 ALS Vial : 4 Sample Multiplier: 1

Instrument :  
 ECD\_L  
 ClientSampleId :  
 PSTDCCC050

Integration File signal 1: autoint1.e  
 Integration File signal 2: autoint2.e  
 Quant Time: Feb 01 20:46:56 2023  
 Quant Method : Z:\pestpcbsrv\HPCHEM1\ECD\_L\methods\PL012023.M  
 Quant Title : GC Extractables  
 QLast Update : Sun Jan 22 23:56:48 2023  
 Response via : Initial Calibration  
 Integrator: ChemStation

Volume Inj. : 1 µl  
 Signal #1 Phase : ZB-MR2 Signal #2 Phase: ZB-MR1  
 Signal #1 Info : 30M x 0.32mm x0.2 Signal #2 Info : 30M x 0.32mm x0.5µm

	Compound	RT#1	RT#2	Resp#1	Resp#2	ng/ml	ng/ml
-----							
System Monitoring Compounds							
1)	SA Tetrachlo...	3.352	2.689	115.8E6	116.7E6	53.990	53.122
28)	SA Decachlor...	8.789	7.835	91214157	118.4E6	52.100	49.680
Target Compounds							
2)	A alpha-BHC	3.800	3.190	177.6E6	171.3E6	56.059	53.867
3)	MA gamma-BHC...	4.128	3.518	165.0E6	160.1E6	56.115	53.603
4)	MA Heptachlor	4.713	3.859	159.1E6	162.1E6	53.843	50.948
5)	MB Aldrin	5.050	4.138	147.0E6	154.1E6	53.745	52.244
6)	B beta-BHC	4.324	3.814	72007706	70068588	52.752	52.500
7)	B delta-BHC	4.567	4.044	162.7E6	155.7E6	56.214	53.991
8)	B Heptachlo...	5.475	4.641	137.3E6	142.9E6	53.058	51.350
9)	A Endosulfan I	5.856	5.010	125.9E6	131.3E6	53.319	50.465
10)	B gamma-Chl...	5.729	4.892	136.4E6	141.5E6	54.017	49.940
11)	B alpha-Chl...	5.809	4.956	134.4E6	142.8E6	53.240	49.862
12)	B 4,4'-DDE	5.987	5.148	118.8E6	122.3E6	53.337	51.842
13)	MA Dieldrin	6.131	5.275	127.9E6	137.8E6	53.457	50.937
14)	MA Endrin	6.358	5.550	118.1E6	118.0E6	54.630	50.822
15)	B Endosulfa...	6.576	5.844	105.6E6	113.8E6	46.067	54.618
16)	A 4,4'-DDD	6.500	5.702	100.2E6	103.0E6	54.722	54.804
17)	MA 4,4'-DDT	6.813	5.954	102.6E6	106.5E6	49.360	50.665
18)	B Endrin al...	6.706	6.024	85345105	91434771	51.307	50.071
19)	B Endosulfa...	6.940	6.246	109.3E6	120.0E6	52.815	51.582
20)	A Methoxychlor	7.292	6.531	54531677	57296021	49.426	47.217
21)	B Endrin ke...	7.420	6.752	119.2E6	135.7E6	54.045	53.158
22)	Mirex	7.892	6.935	90313394	114.7E6	52.514	50.362
-----							

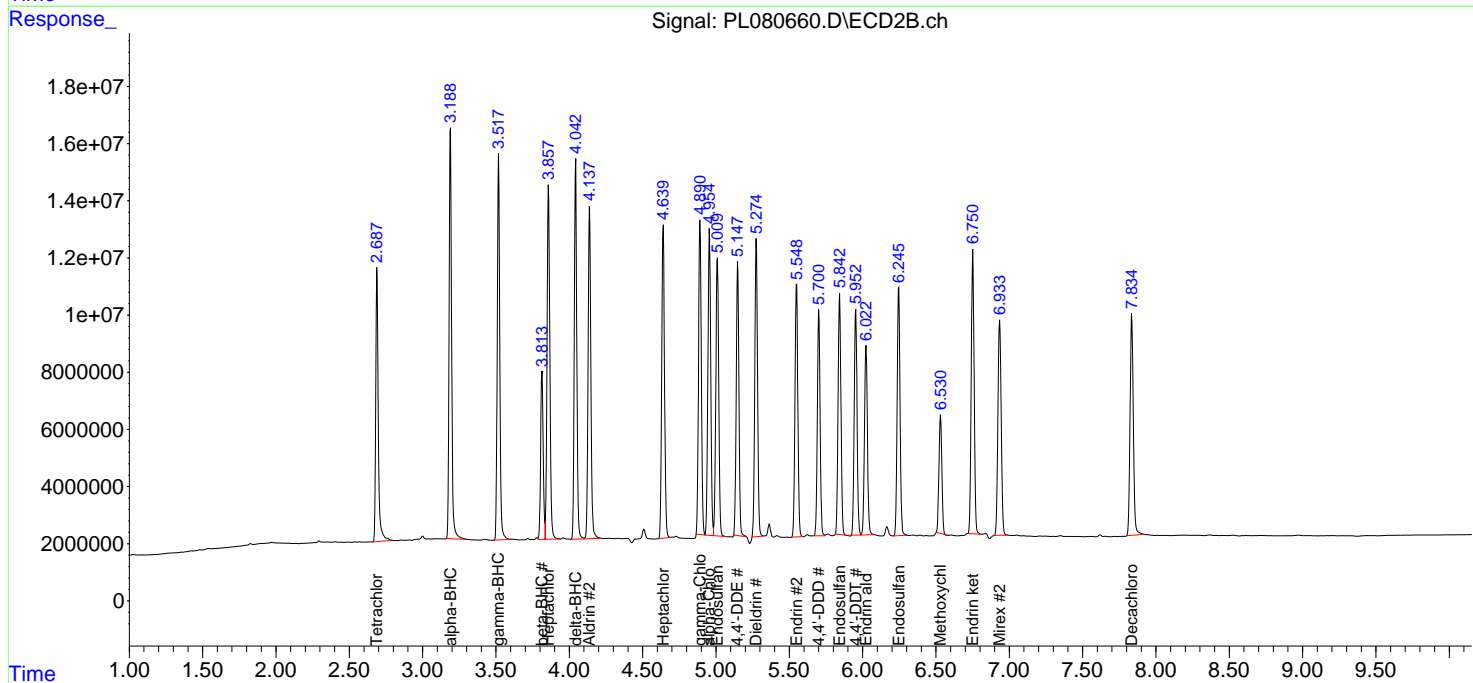
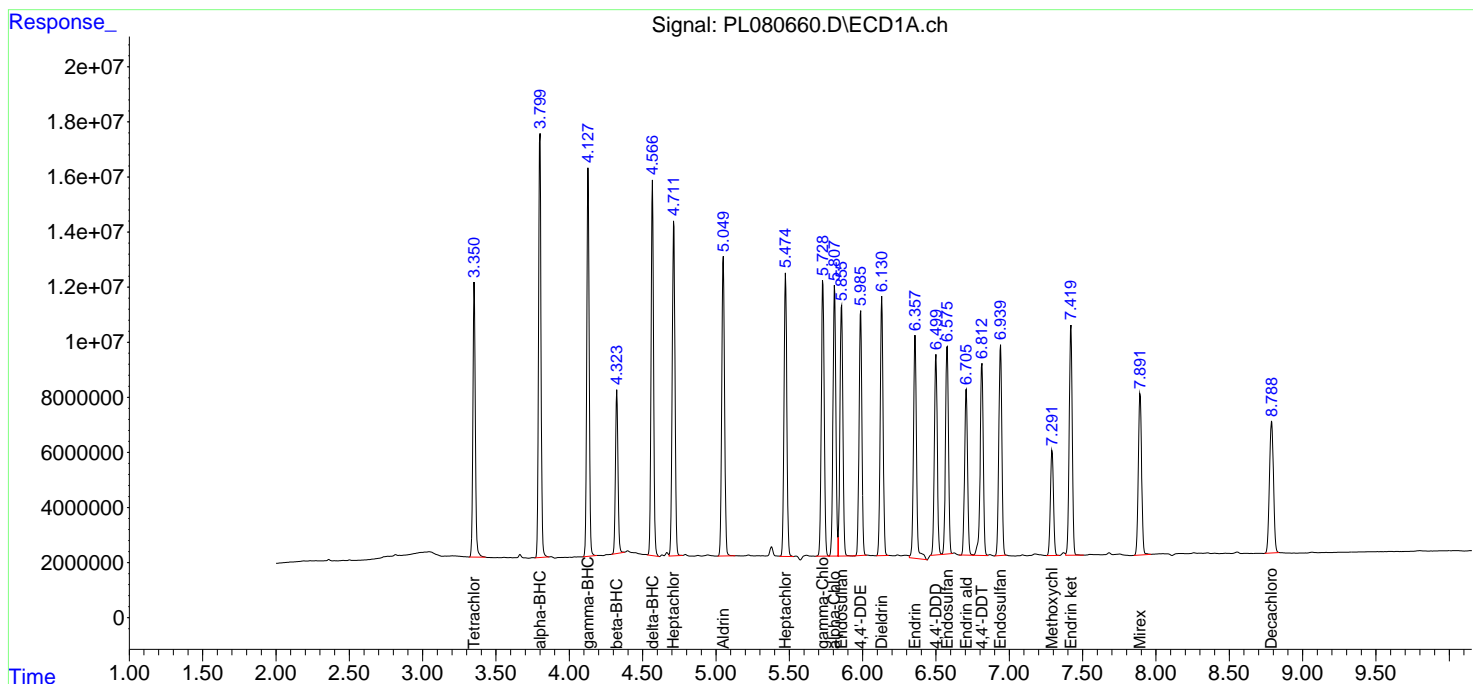
(f)=RT Delta > 1/2 Window (#)=Amounts differ by > 25% (m)=manual int.

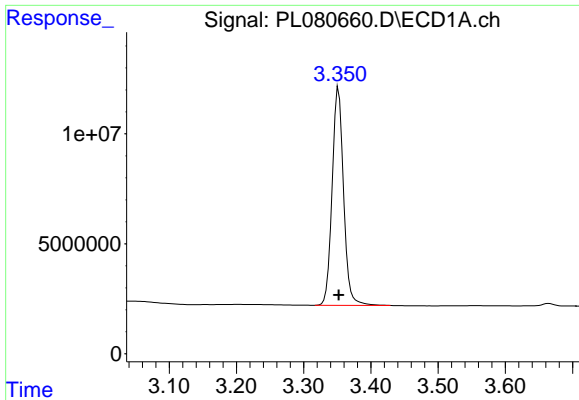
Data Path : Z:\pestpcbsrv\HPCHEM1\ECD\_L\Data\PL020123\  
 Data File : PL080660.D  
 Signal(s) : Signal #1: ECD1A.ch Signal #2: ECD2B.ch  
 Acq On : 01 Feb 2023 10:49  
 Operator : AR\AJ  
 Sample : PSTDCCC050  
 Misc :  
 ALS Vial : 4 Sample Multiplier: 1

Instrument :  
 ECD\_L  
 ClientSampleId :  
 PSTDCCC050

Integration File signal 1: autoint1.e  
 Integration File signal 2: autoint2.e  
 Quant Time: Feb 01 20:46:56 2023  
 Quant Method : Z:\pestpcbsrv\HPCHEM1\ECD\_L\methods\PL012023.M  
 Quant Title : GC Extractables  
 QLast Update : Sun Jan 22 23:56:48 2023  
 Response via : Initial Calibration  
 Integrator: ChemStation

Volume Inj. : 1 µl  
 Signal #1 Phase : ZB-MR2 Signal #2 Phase: ZB-MR1  
 Signal #1 Info : 30M x 0.32mm x0.2 Signal #2 Info : 30M x 0.32mm x0.5µm

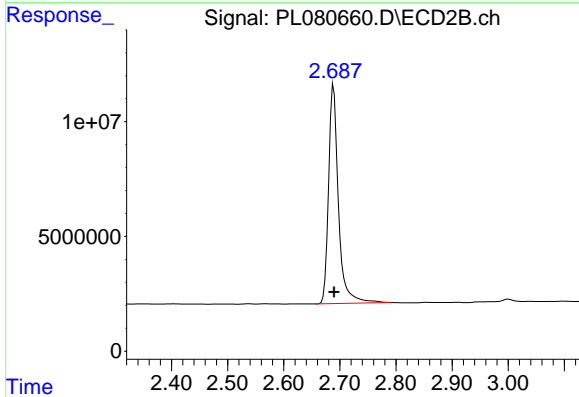




#1 Tetrachloro-m-xylene

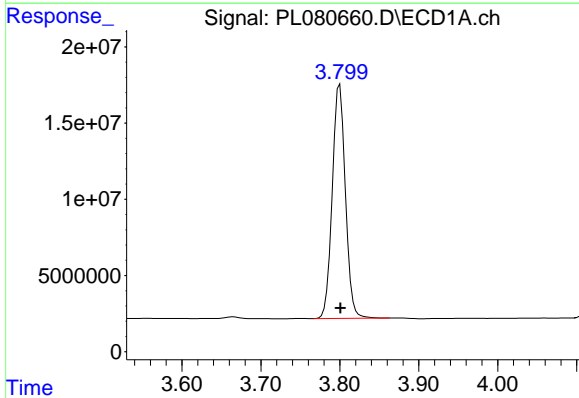
R.T.: 3.352 min  
 Delta R.T.: 0.000 min  
 Response: 115799184  
 Conc: 53.99 ng/ml

Instrument :  
 ECD\_L  
 ClientSampleId :  
 PSTDCCC050



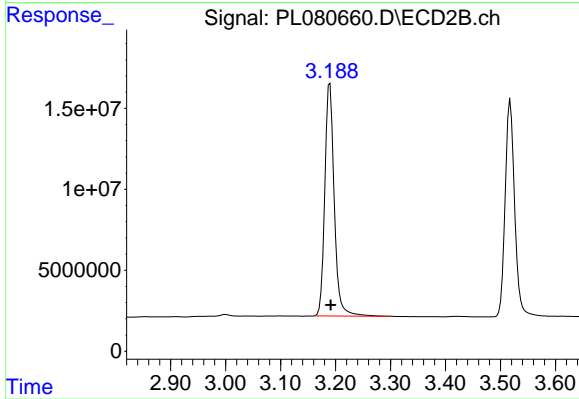
#1 Tetrachloro-m-xylene

R.T.: 2.689 min  
 Delta R.T.: 0.000 min  
 Response: 116679725  
 Conc: 53.12 ng/ml



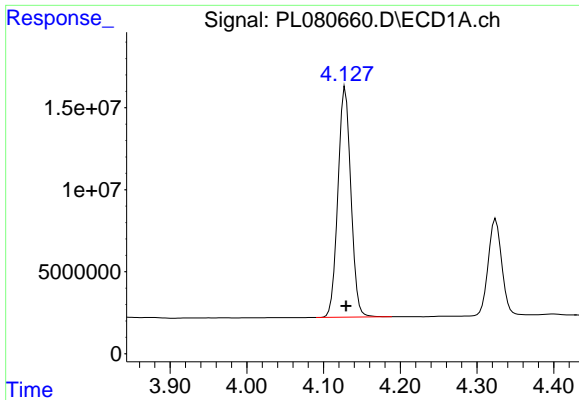
#2 alpha-BHC

R.T.: 3.800 min  
 Delta R.T.: 0.000 min  
 Response: 177595617  
 Conc: 56.06 ng/ml



#2 alpha-BHC

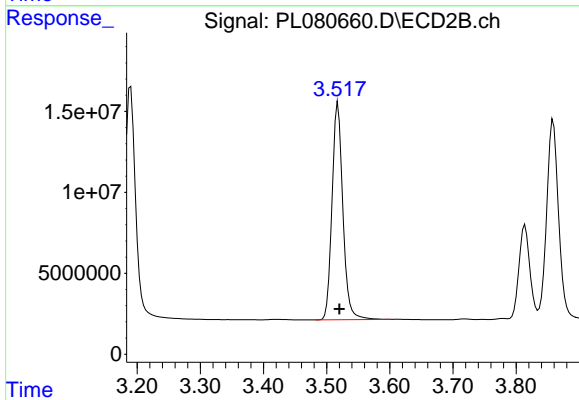
R.T.: 3.190 min  
 Delta R.T.: -0.002 min  
 Response: 171319027  
 Conc: 53.87 ng/ml



#3 gamma-BHC (Lindane)

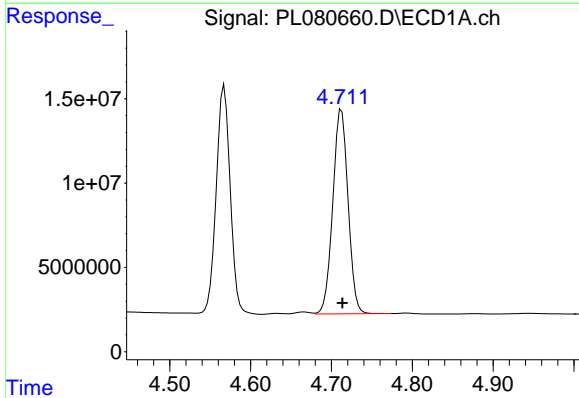
R.T.: 4.128 min  
Delta R.T.: -0.001 min  
Response: 164965298  
Conc: 56.12 ng/ml

Instrument :  
ECD\_L  
ClientSampleId :  
PSTDCCC050



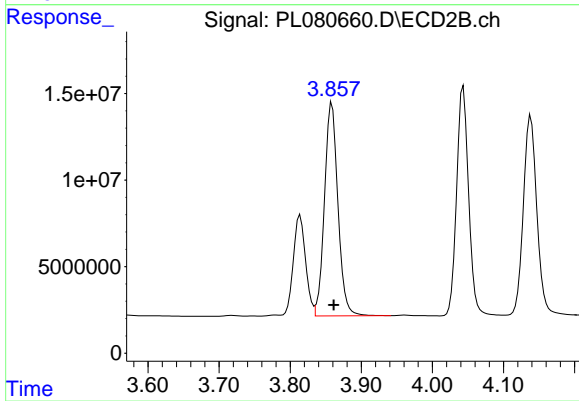
#3 gamma-BHC (Lindane)

R.T.: 3.518 min  
Delta R.T.: -0.002 min  
Response: 160129480  
Conc: 53.60 ng/ml



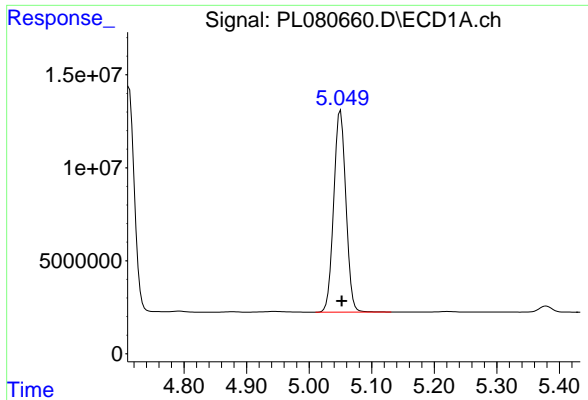
#4 Heptachlor

R.T.: 4.713 min  
Delta R.T.: 0.000 min  
Response: 159118713  
Conc: 53.84 ng/ml



#4 Heptachlor

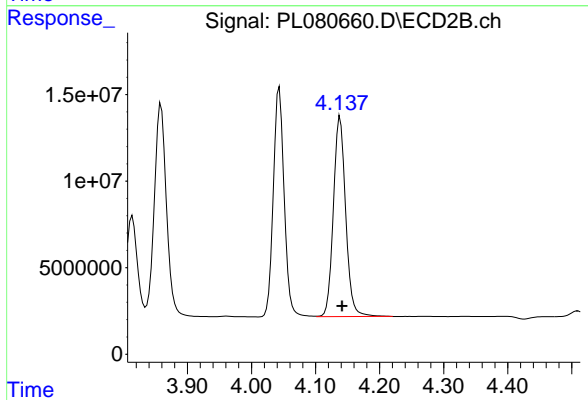
R.T.: 3.859 min  
Delta R.T.: -0.003 min  
Response: 162133964  
Conc: 50.95 ng/ml



#5 Aldrin

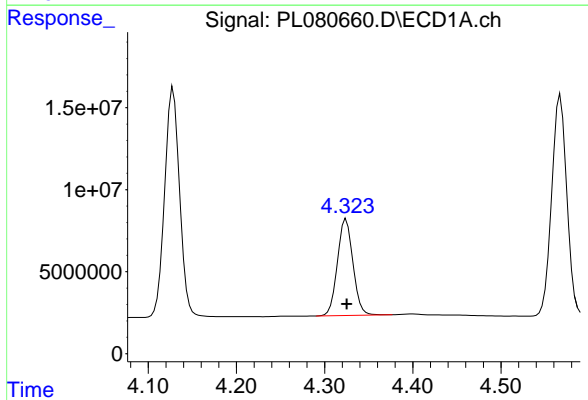
R.T.: 5.050 min  
 Delta R.T.: -0.002 min  
 Response: 147033419  
 Conc: 53.74 ng/ml

Instrument :  
 ECD\_L  
 ClientSampleId :  
 PSTDCCC050



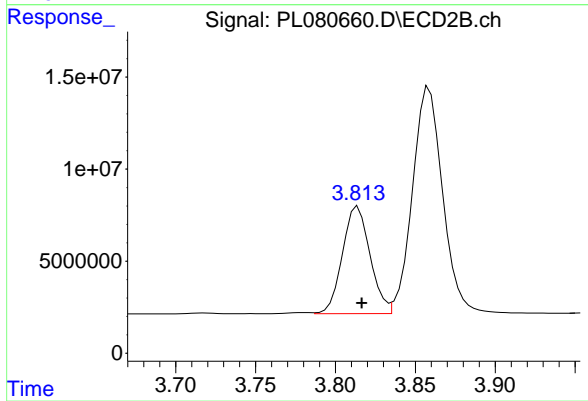
#5 Aldrin

R.T.: 4.138 min  
 Delta R.T.: -0.003 min  
 Response: 154097034  
 Conc: 52.24 ng/ml



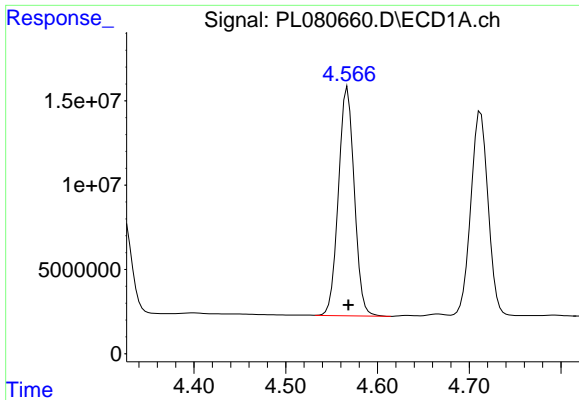
#6 beta-BHC

R.T.: 4.324 min  
 Delta R.T.: 0.000 min  
 Response: 72007706  
 Conc: 52.75 ng/ml



#6 beta-BHC

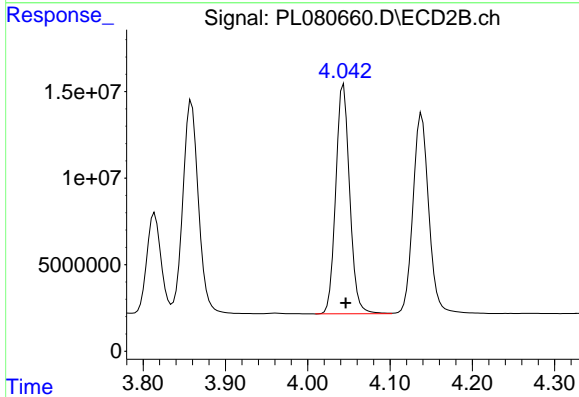
R.T.: 3.814 min  
 Delta R.T.: -0.002 min  
 Response: 70068588  
 Conc: 52.50 ng/ml



#7 delta-BHC

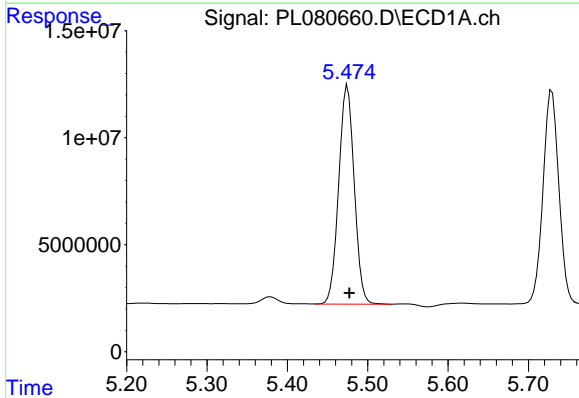
R.T.: 4.567 min  
 Delta R.T.: 0.000 min  
 Response: 162739341  
 Conc: 56.21 ng/ml

Instrument :  
 ECD\_L  
 ClientSampleId :  
 PSTDCCC050



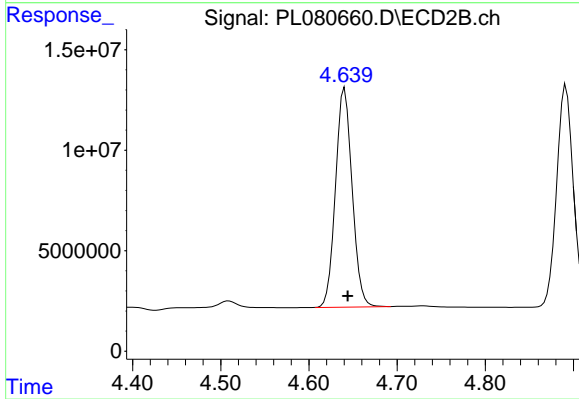
#7 delta-BHC

R.T.: 4.044 min  
 Delta R.T.: -0.003 min  
 Response: 155732520  
 Conc: 53.99 ng/ml



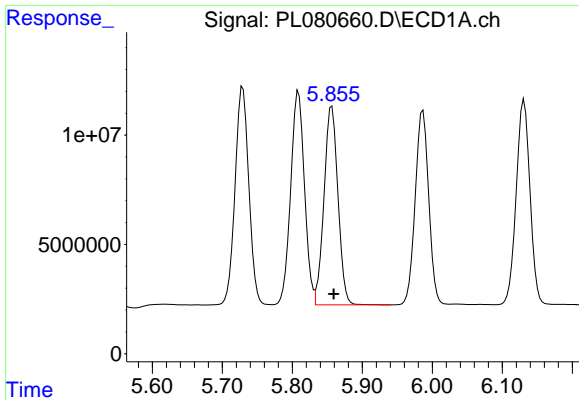
#8 Heptachlor epoxide

R.T.: 5.475 min  
 Delta R.T.: -0.002 min  
 Response: 137265213  
 Conc: 53.06 ng/ml



#8 Heptachlor epoxide

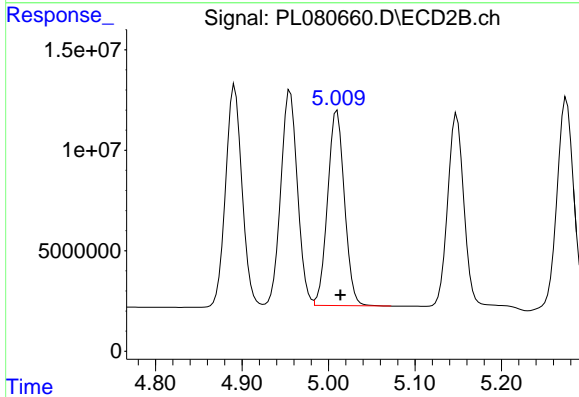
R.T.: 4.641 min  
 Delta R.T.: -0.003 min  
 Response: 142872574  
 Conc: 51.35 ng/ml



#9 Endosulfan I

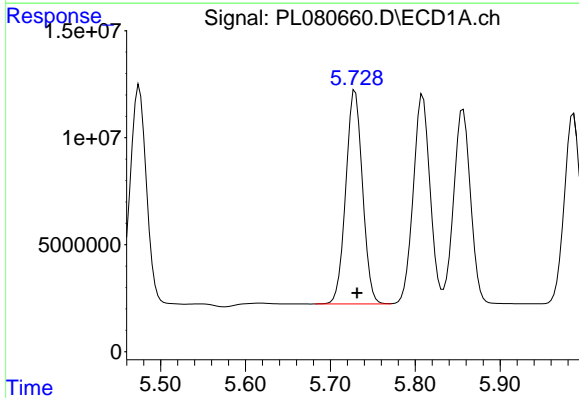
R.T.: 5.856 min  
 Delta R.T.: -0.003 min  
 Response: 125910036  
 Conc: 53.32 ng/ml

Instrument :  
 ECD\_L  
 ClientSampleId :  
 PSTDCCC050



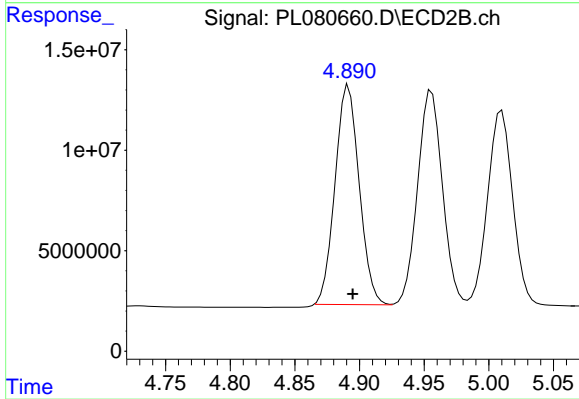
#9 Endosulfan I

R.T.: 5.010 min  
 Delta R.T.: -0.003 min  
 Response: 131277318  
 Conc: 50.47 ng/ml



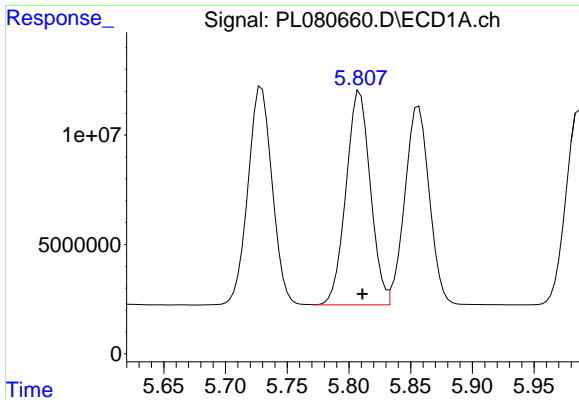
#10 gamma-Chlordane

R.T.: 5.729 min  
 Delta R.T.: -0.002 min  
 Response: 136431073  
 Conc: 54.02 ng/ml



#10 gamma-Chlordane

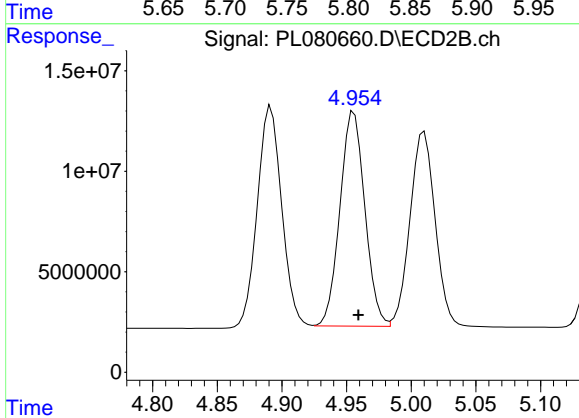
R.T.: 4.892 min  
 Delta R.T.: -0.003 min  
 Response: 141541883  
 Conc: 49.94 ng/ml



#11 alpha-Chlordane

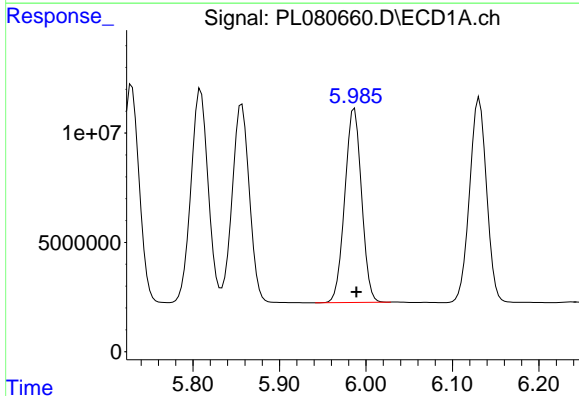
R.T.: 5.809 min  
 Delta R.T.: -0.002 min  
 Response: 134392499  
 Conc: 53.24 ng/ml

Instrument :  
 ECD\_L  
 ClientSampleId :  
 PSTDCCC050



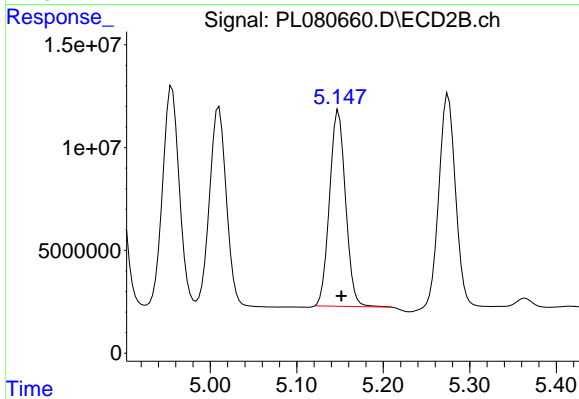
#11 alpha-Chlordane

R.T.: 4.956 min  
 Delta R.T.: -0.003 min  
 Response: 142838021  
 Conc: 49.86 ng/ml



#12 4,4'-DDE

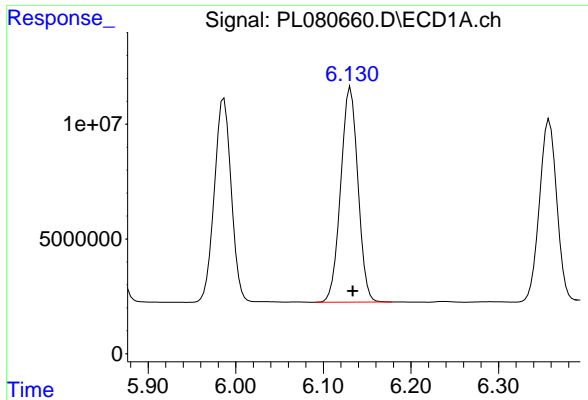
R.T.: 5.987 min  
 Delta R.T.: -0.002 min  
 Response: 118799389  
 Conc: 53.34 ng/ml



#12 4,4'-DDE

R.T.: 5.148 min  
 Delta R.T.: -0.003 min  
 Response: 122287462  
 Conc: 51.84 ng/ml

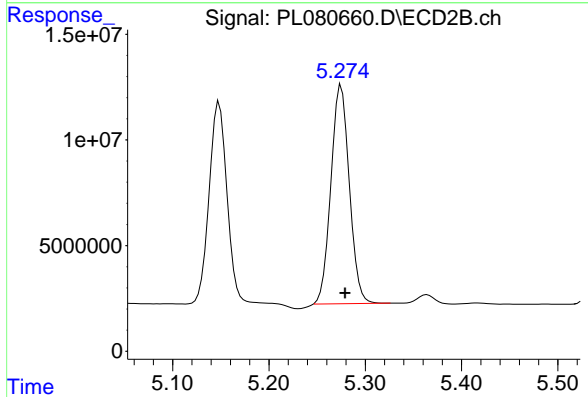




#13 Dieldrin

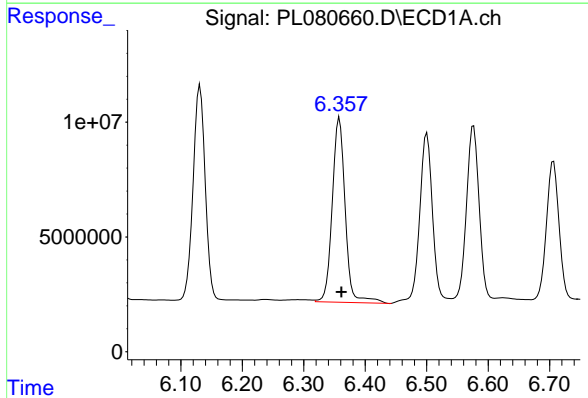
R.T.: 6.131 min  
 Delta R.T.: -0.002 min  
 Response: 127942517  
 Conc: 53.46 ng/ml

Instrument :  
 ECD\_L  
 ClientSampleId :  
 PSTDCCC050



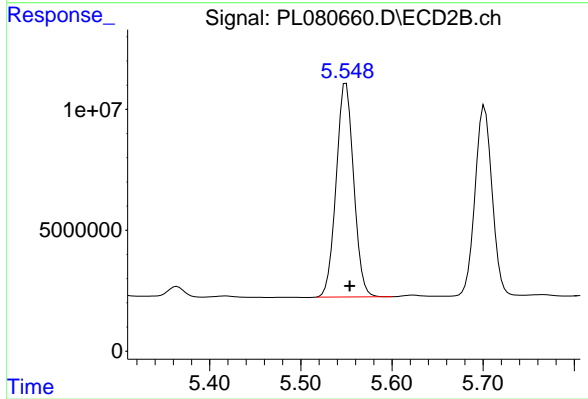
#13 Dieldrin

R.T.: 5.275 min  
 Delta R.T.: -0.004 min  
 Response: 137783172  
 Conc: 50.94 ng/ml



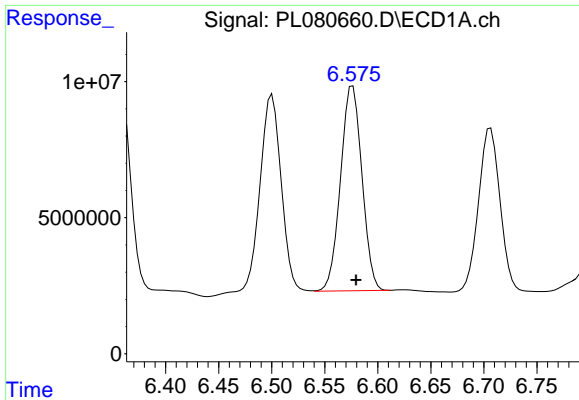
#14 Endrin

R.T.: 6.358 min  
 Delta R.T.: -0.003 min  
 Response: 118148502  
 Conc: 54.63 ng/ml



#14 Endrin

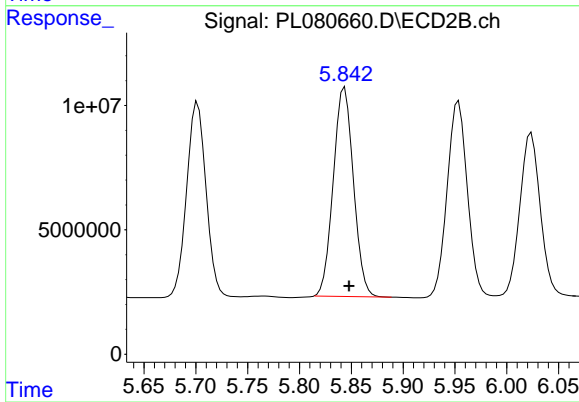
R.T.: 5.550 min  
 Delta R.T.: -0.004 min  
 Response: 117965981  
 Conc: 50.82 ng/ml



#15 Endosulfan II

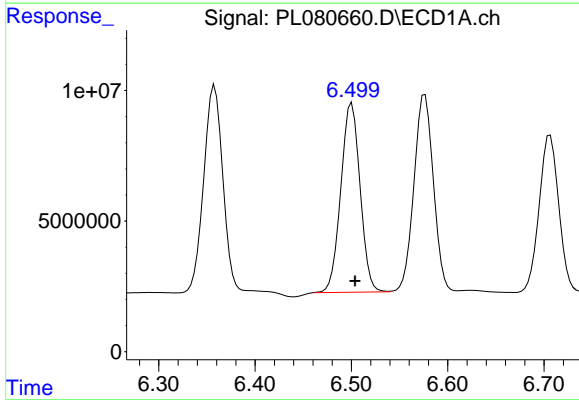
R.T.: 6.576 min  
Delta R.T.: -0.003 min  
Response: 105599895  
Conc: 46.07 ng/ml

Instrument :  
ECD\_L  
ClientSampleId :  
PSTDCCC050



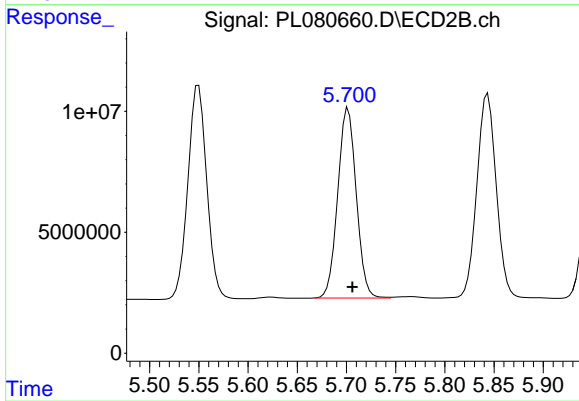
#15 Endosulfan II

R.T.: 5.844 min  
Delta R.T.: -0.004 min  
Response: 113808206  
Conc: 54.62 ng/ml



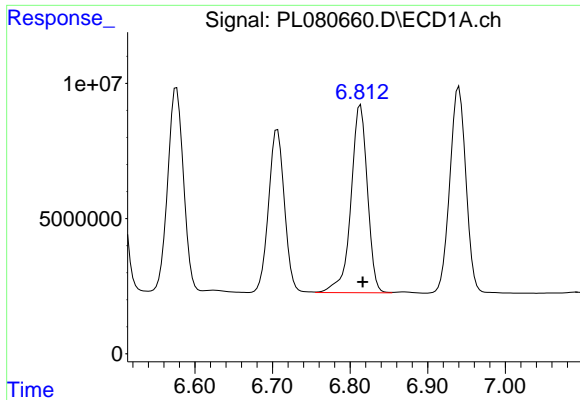
#16 4,4'-DDD

R.T.: 6.500 min  
Delta R.T.: -0.003 min  
Response: 100249537  
Conc: 54.72 ng/ml



#16 4,4'-DDD

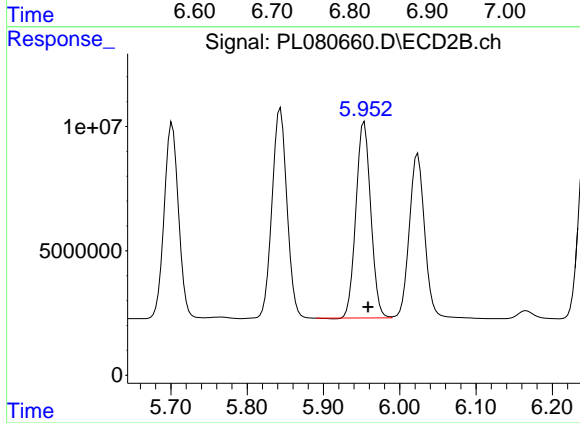
R.T.: 5.702 min  
Delta R.T.: -0.005 min  
Response: 102987688  
Conc: 54.80 ng/ml



#17 4,4'-DDT

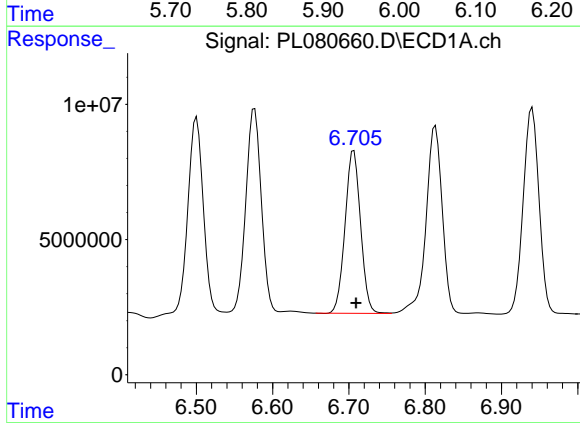
R.T.: 6.813 min  
 Delta R.T.: -0.003 min  
 Response: 102553982  
 Conc: 49.36 ng/ml

Instrument :  
 ECD\_L  
 ClientSampleId :  
 PSTDCCC050



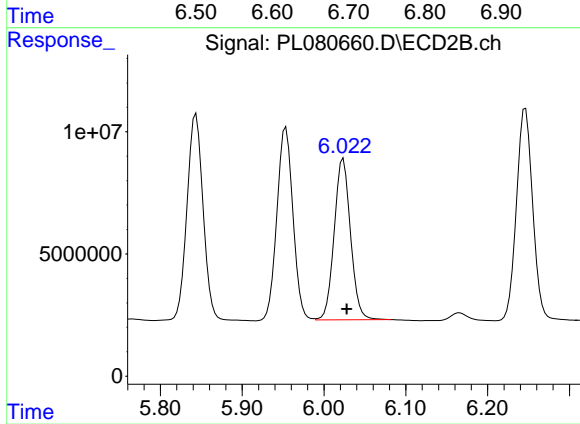
#17 4,4'-DDT

R.T.: 5.954 min  
 Delta R.T.: -0.005 min  
 Response: 106470777  
 Conc: 50.66 ng/ml



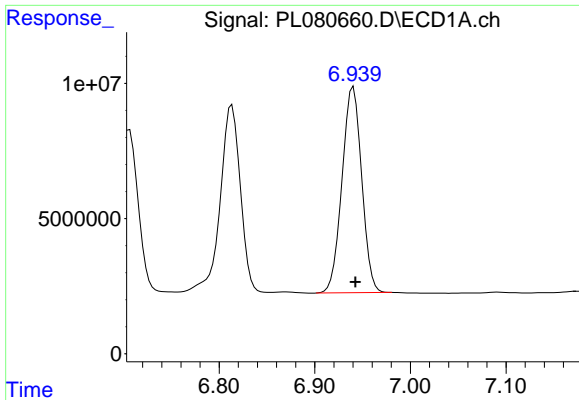
#18 Endrin aldehyde

R.T.: 6.706 min  
 Delta R.T.: -0.003 min  
 Response: 85345105  
 Conc: 51.31 ng/ml



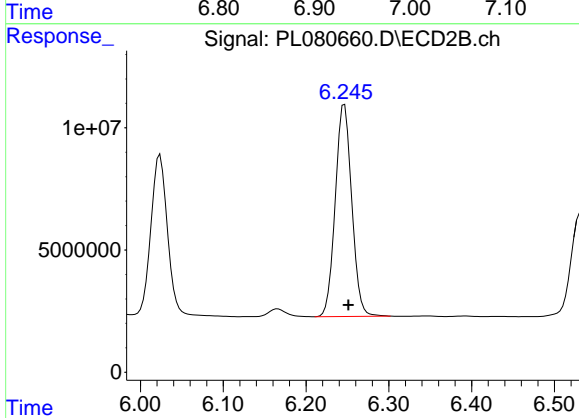
#18 Endrin aldehyde

R.T.: 6.024 min  
 Delta R.T.: -0.004 min  
 Response: 91434771  
 Conc: 50.07 ng/ml

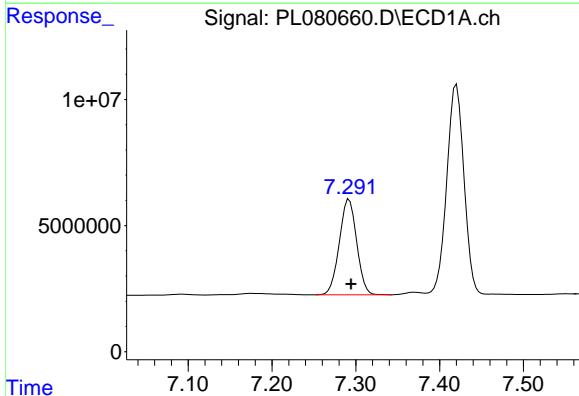


#19 Endosulfan Sulfate  
 R.T.: 6.940 min  
 Delta R.T.: -0.002 min  
 Response: 109322707  
 Conc: 52.82 ng/ml

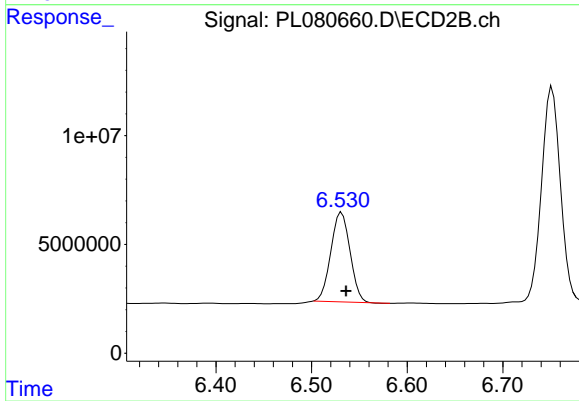
Instrument :  
 ECD\_L  
 ClientSampleId :  
 PSTDCCC050



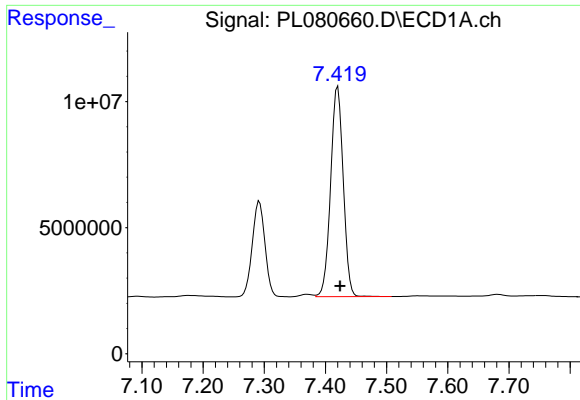
#19 Endosulfan Sulfate  
 R.T.: 6.246 min  
 Delta R.T.: -0.005 min  
 Response: 119963354  
 Conc: 51.58 ng/ml



#20 Methoxychlor  
 R.T.: 7.292 min  
 Delta R.T.: -0.002 min  
 Response: 54531677  
 Conc: 49.43 ng/ml



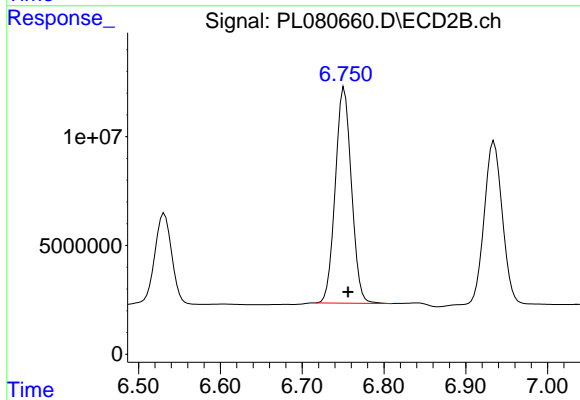
#20 Methoxychlor  
 R.T.: 6.531 min  
 Delta R.T.: -0.005 min  
 Response: 57296021  
 Conc: 47.22 ng/ml



#21 Endrin ketone

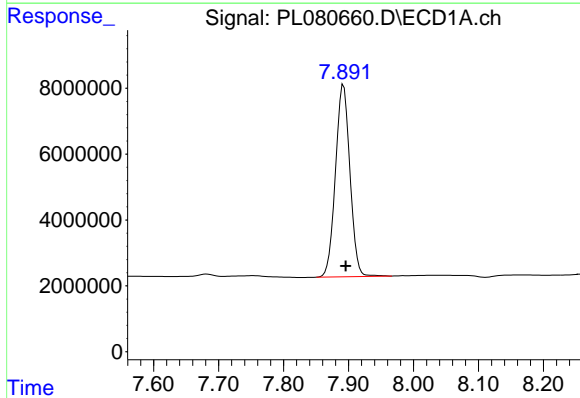
R.T.: 7.420 min  
 Delta R.T.: -0.004 min  
 Response: 119241941  
 Conc: 54.05 ng/ml

Instrument :  
 ECD\_L  
 ClientSampleId :  
 PSTDCCC050



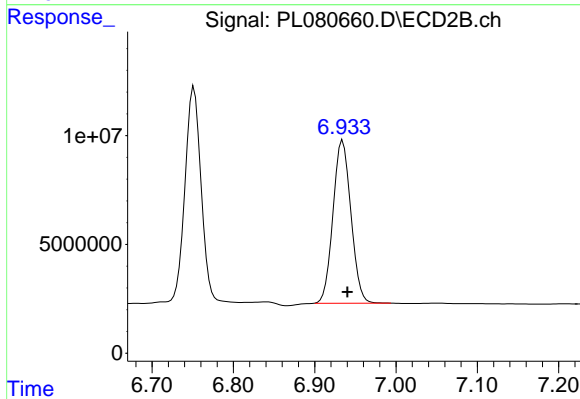
#21 Endrin ketone

R.T.: 6.752 min  
 Delta R.T.: -0.004 min  
 Response: 135725285  
 Conc: 53.16 ng/ml



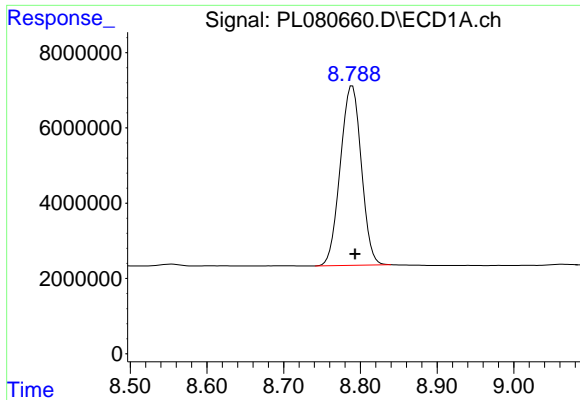
#22 Mirex

R.T.: 7.892 min  
 Delta R.T.: -0.003 min  
 Response: 90313394  
 Conc: 52.51 ng/ml



#22 Mirex

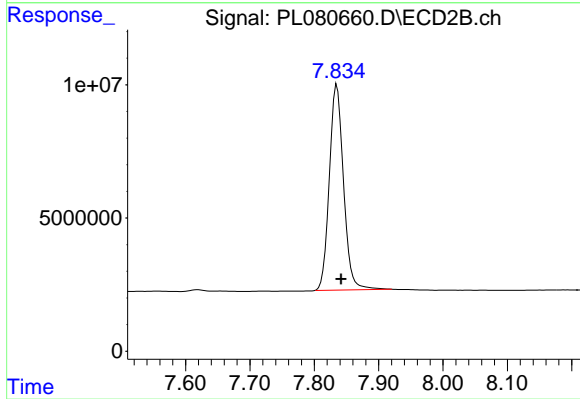
R.T.: 6.935 min  
 Delta R.T.: -0.006 min  
 Response: 114660232  
 Conc: 50.36 ng/ml



#28 Decachlorobiphenyl

R.T.: 8.789 min  
Delta R.T.: -0.004 min  
Response: 91214157  
Conc: 52.10 ng/ml

Instrument :  
ECD\_L  
ClientSampleId :  
PSTDCCC050



#28 Decachlorobiphenyl

R.T.: 7.835 min  
Delta R.T.: -0.007 min  
Response: 118363465  
Conc: 49.68 ng/ml