

Data Path : Z:\pestpcbsrv\HPCHEM1\ECD_L\Data\PL020123\
 Data File : PL080683.D
 Signal(s) : Signal #1: ECD1A.ch Signal #2: ECD2B.ch
 Acq On : 01 Feb 2023 16:53
 Operator : AR\AJ
 Sample : 01382-01
 Misc :
 ALS Vial : 28 Sample Multiplier: 1

Instrument :
 ECD_L
 ClientSampleId :
 OR-3-013123

Integration File signal 1: autoint1.e
 Integration File signal 2: autoint2.e
 Quant Time: Feb 01 21:03:39 2023
 Quant Method : Z:\pestpcbsrv\HPCHEM1\ECD_L\methods\PL012023.M
 Quant Title : GC Extractables
 QLast Update : Sun Jan 22 23:56:48 2023
 Response via : Initial Calibration
 Integrator: ChemStation

Volume Inj. : 1 µl
 Signal #1 Phase : ZB-MR2 Signal #2 Phase: ZB-MR1
 Signal #1 Info : 30M x 0.32mm x0.2 Signal #2 Info : 30M x 0.32mm x0.5µm

Compound	RT#1	RT#2	Resp#1	Resp#2	ng/ml	ng/ml

System Monitoring Compounds						
1) SA Tetrachlo...	3.350	2.688	21421211	21850724	9.987	9.948
28) SA Decachlor...	8.787	7.833	19349792	23727450	11.052	9.959

Target Compounds

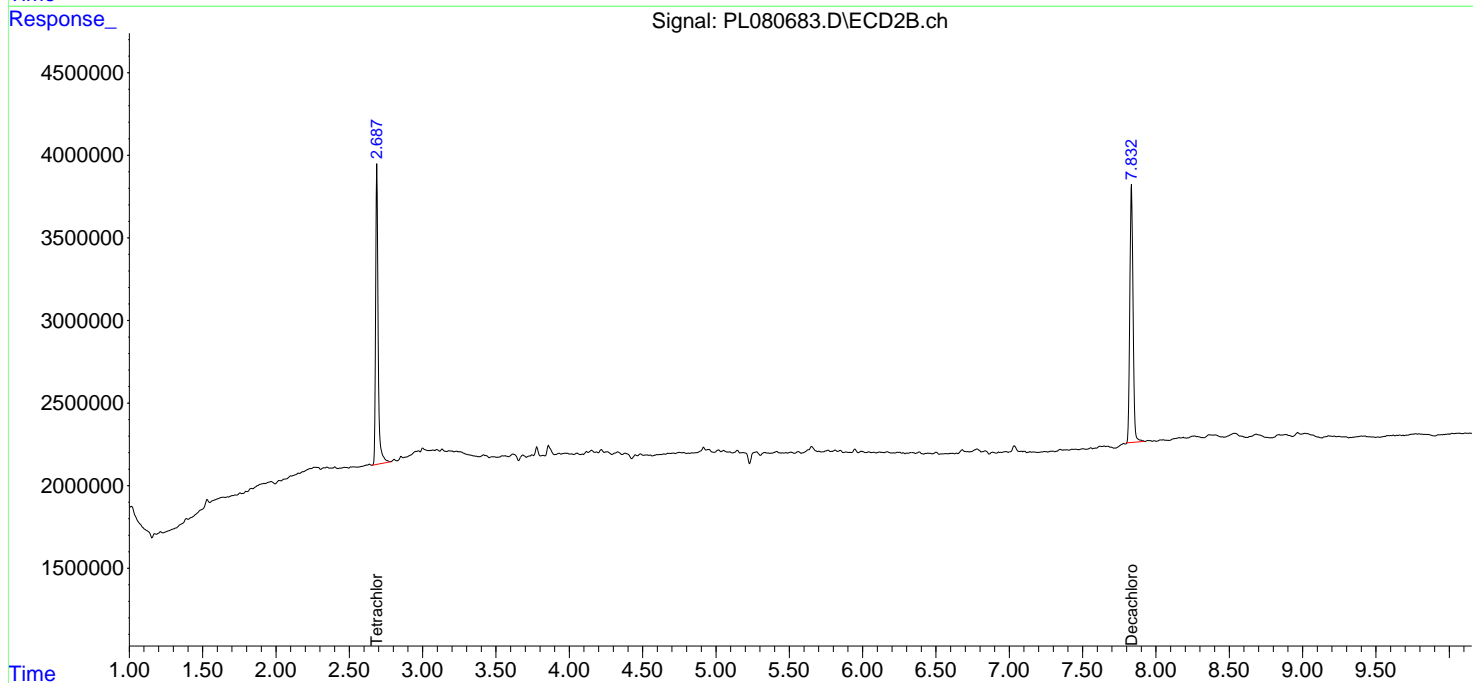
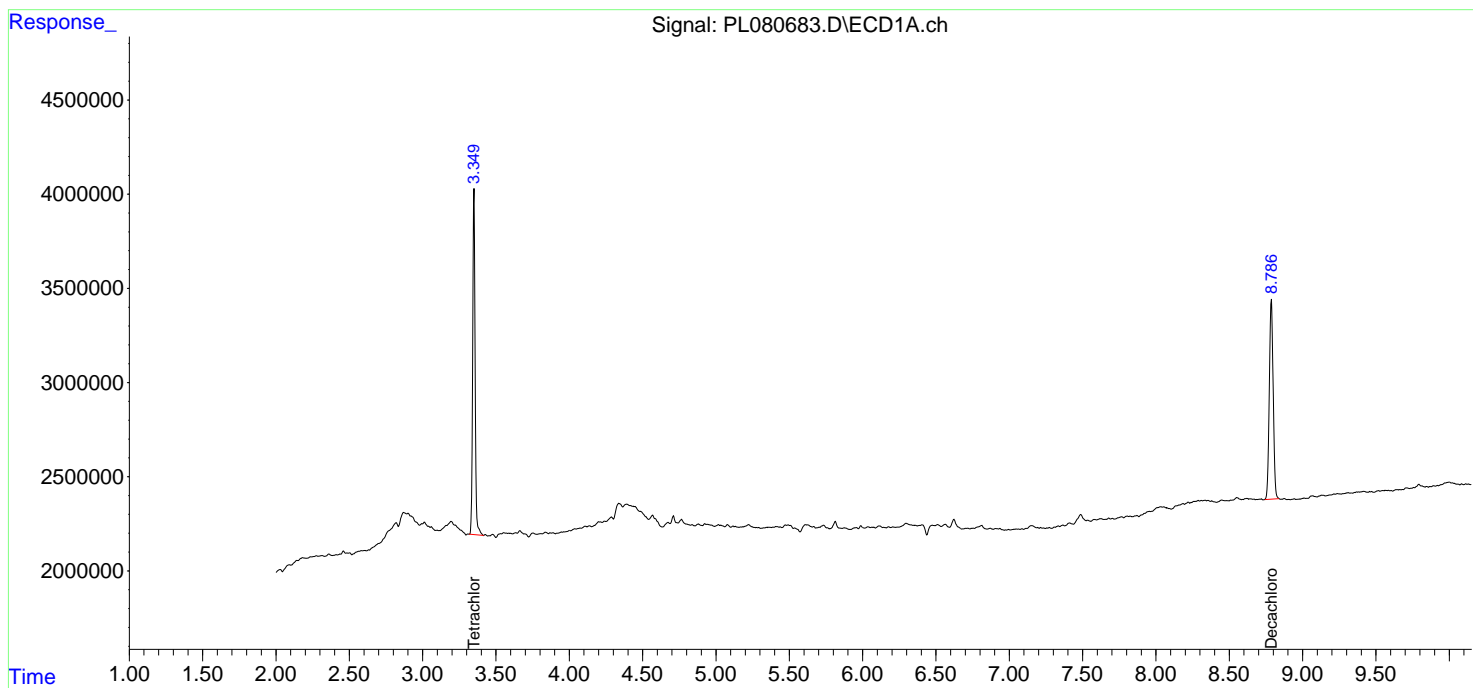
(f)=RT Delta > 1/2 Window (#)=Amounts differ by > 25% (m)=manual int.

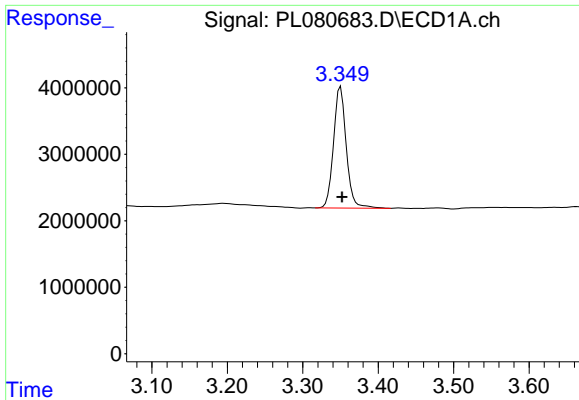
Data Path : Z:\pestpcbsrv\HPCHEM1\ECD_L\Data\PL020123\
 Data File : PL080683.D
 Signal(s) : Signal #1: ECD1A.ch Signal #2: ECD2B.ch
 Acq On : 01 Feb 2023 16:53
 Operator : AR\AJ
 Sample : 01382-01
 Misc :
 ALS Vial : 28 Sample Multiplier: 1

Instrument :
 ECD_L
 ClientSampleId :
 OR-3-013123

Integration File signal 1: autoint1.e
 Integration File signal 2: autoint2.e
 Quant Time: Feb 01 21:03:39 2023
 Quant Method : Z:\pestpcbsrv\HPCHEM1\ECD_L\methods\PL012023.M
 Quant Title : GC Extractables
 QLast Update : Sun Jan 22 23:56:48 2023
 Response via : Initial Calibration
 Integrator: ChemStation

Volume Inj. : 1 µl
 Signal #1 Phase : ZB-MR2 Signal #2 Phase: ZB-MR1
 Signal #1 Info : 30M x 0.32mm x0.2 Signal #2 Info : 30M x 0.32mm x0.5µm

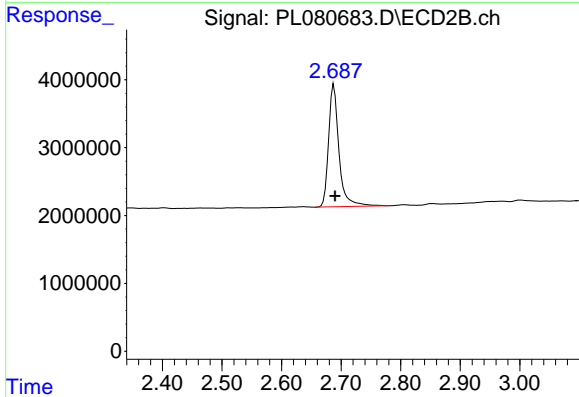




#1 Tetrachloro-m-xylene

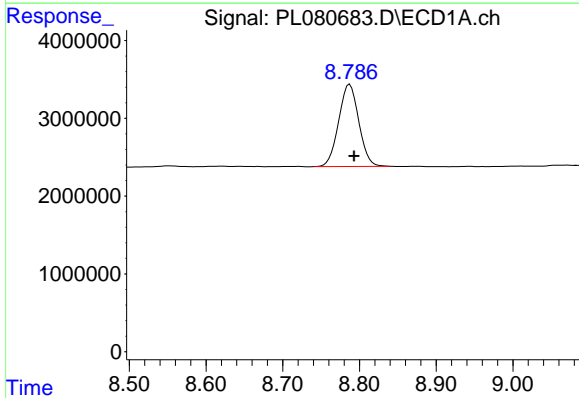
R.T.: 3.350 min
 Delta R.T.: -0.002 min
 Response: 21421211
 Conc: 9.99 ng/ml

Instrument :
 ECD_L
 ClientSampleId :
 OR-3-013123



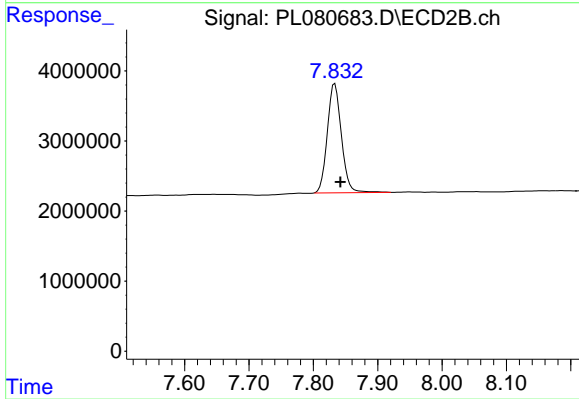
#1 Tetrachloro-m-xylene

R.T.: 2.688 min
 Delta R.T.: -0.002 min
 Response: 21850724
 Conc: 9.95 ng/ml



#28 Decachlorobiphenyl

R.T.: 8.787 min
 Delta R.T.: -0.006 min
 Response: 19349792
 Conc: 11.05 ng/ml



#28 Decachlorobiphenyl

R.T.: 7.833 min
 Delta R.T.: -0.008 min
 Response: 23727450
 Conc: 9.96 ng/ml