

Data Path : Z:\pestpcbsrv\HPCHEM1\ECD\_L\Data\PL020321\  
 Data File : PL064605.D  
 Signal(s) : Signal #1: ECD1A.ch Signal #2: ECD2B.ch  
 Acq On : 04 Feb 2021 00:57  
 Operator : AR\AJ  
 Sample : PB134443BL  
 Misc :  
 ALS Vial : 47 Sample Multiplier: 1

Instrument :  
 ECD\_L  
 ClientSampleId :  
 PB134443BL

Integration File signal 1: autoint1.e  
 Integration File signal 2: autoint2.e  
 Quant Time: Feb 04 03:40:39 2021  
 Quant Method : Z:\pestpcbsrv\HPCHEM1\ECD\_L\methods\PL012921.M  
 Quant Title : GC Extractables  
 QLast Update : Fri Jan 29 04:48:57 2021  
 Response via : Initial Calibration  
 Integrator: ChemStation

Volume Inj. : 1 µl  
 Signal #1 Phase : ZB-MR2 Signal #2 Phase: ZB-MR1  
 Signal #1 Info : 30M x 0.32mm x0.2 Signal #2 Info : 30M x 0.32mm x0.5µm

Compound	RT#1	RT#2	Resp#1	Resp#2	ng/ml	ng/ml
-----						
System Monitoring Compounds						
1) SA Tetrachlo...	3.432	4.108	61441889	49422348	20.184	20.748
28) SA Decachlor...	8.163	9.274	49837866	68708108	15.815	33.559 #
Target Compounds						
4) MA Heptachlor	0.000	5.300	0	7875927	N.D.	2.260 #
6) B beta-BHC	0.000	4.986	0	4056967	N.D.	2.397 #
14) MA Endrin	5.952	6.853	10849289	5955151	2.966	2.594
15) B Endosulfa...	6.247	0.000	5902614	0	1.632	N.D. #
19) B Endosulfa...	0.000	7.444f	0	12358823	N.D.	5.140 #
20) A Methoxychlor	6.908f	0.000	9607420	0	5.319	N.D. #
23) Chlordane-1	4.319f	0.000	1721877	0	15.664	N.D. #
27) Chlordane-5	6.247	0.000	5902614	0	49.581	N.D. #
-----						

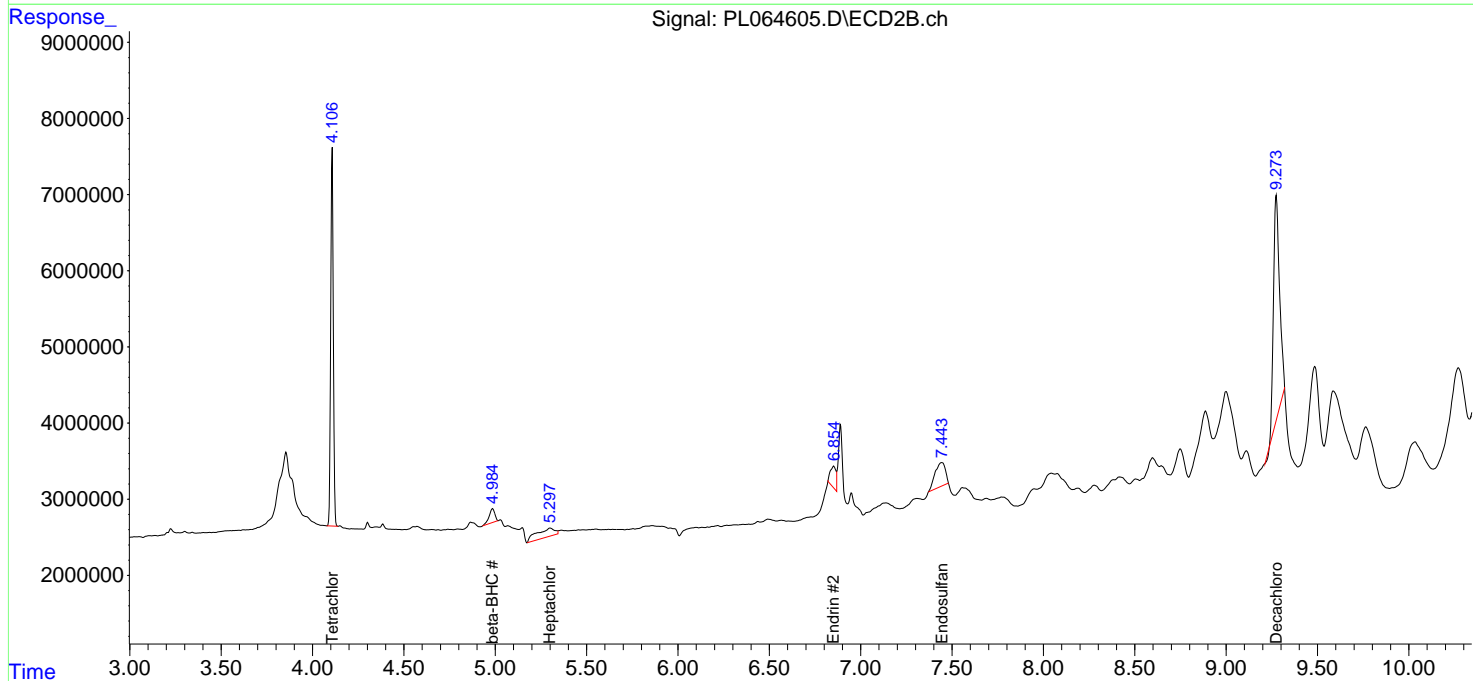
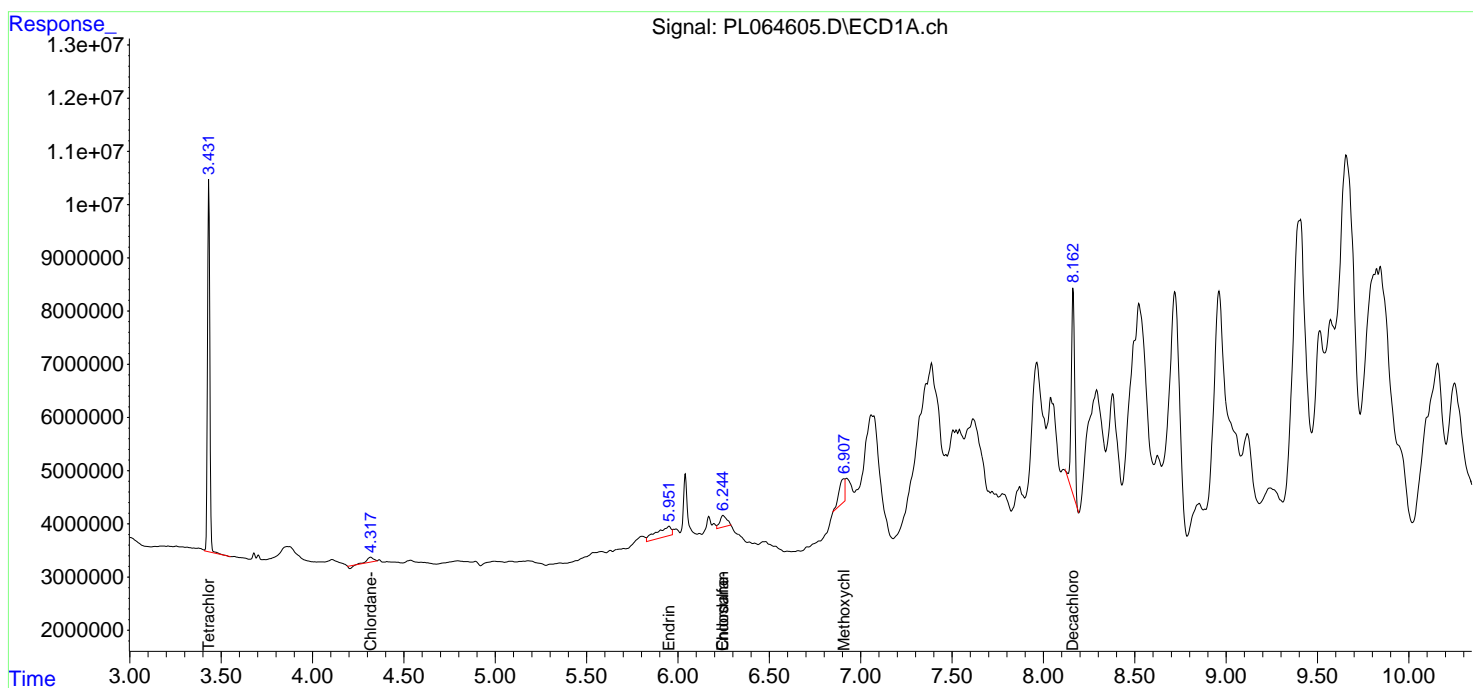
(f)=RT Delta > 1/2 Window (#)=Amounts differ by > 25% (m)=manual int.

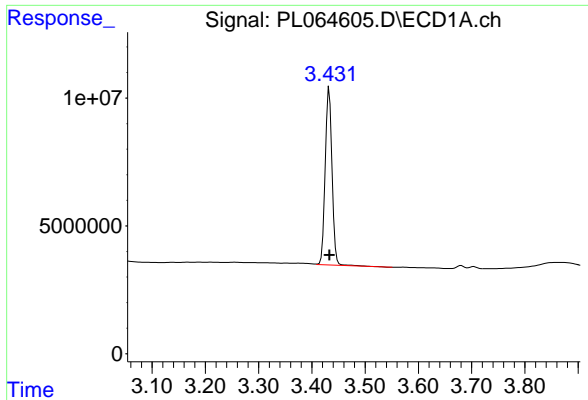
Data Path : Z:\pestpcbsrv\HPCHEM1\ECD\_L\Data\PL020321\  
 Data File : PL064605.D  
 Signal(s) : Signal #1: ECD1A.ch Signal #2: ECD2B.ch  
 Acq On : 04 Feb 2021 00:57  
 Operator : AR\AJ  
 Sample : PB134443BL  
 Misc :  
 ALS Vial : 47 Sample Multiplier: 1

Instrument :  
 ECD\_L  
 ClientSampled :  
 PB134443BL

Integration File signal 1: autoint1.e  
 Integration File signal 2: autoint2.e  
 Quant Time: Feb 04 03:40:39 2021  
 Quant Method : Z:\pestpcbsrv\HPCHEM1\ECD\_L\methods\PL012921.M  
 Quant Title : GC Extractables  
 QLast Update : Fri Jan 29 04:48:57 2021  
 Response via : Initial Calibration  
 Integrator: ChemStation

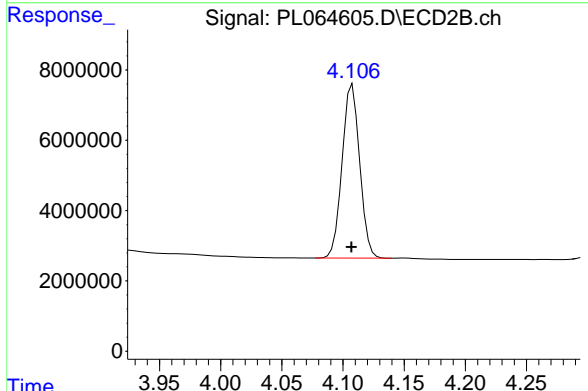
Volume Inj. : 1 µl  
 Signal #1 Phase : ZB-MR2 Signal #2 Phase: ZB-MR1  
 Signal #1 Info : 30M x 0.32mm x0.2 Signal #2 Info : 30M x 0.32mm x0.5µm



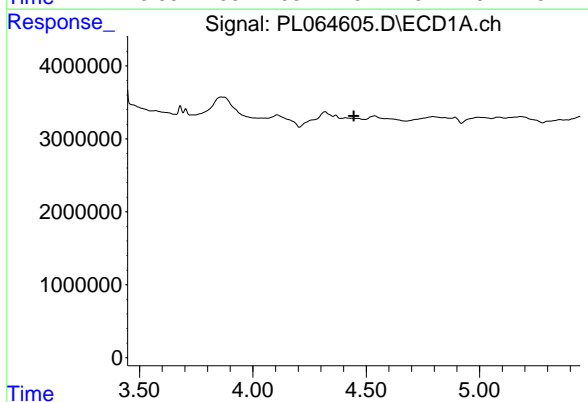


#1 Tetrachloro-m-xylene  
 R.T.: 3.432 min  
 Delta R.T.: 0.000 min  
 Response: 61441889  
 Conc: 20.18 ng/ml

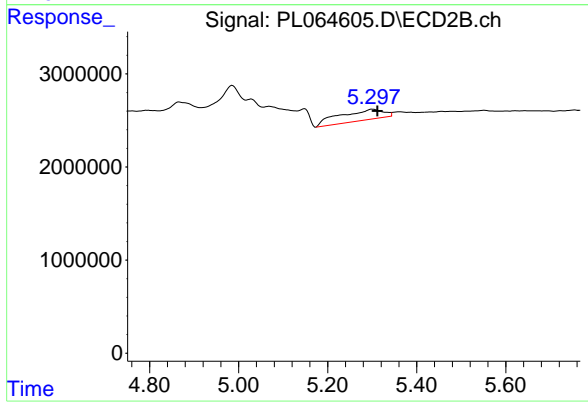
Instrument :  
 ECD\_L  
 ClientSampleId :  
 PB134443BL



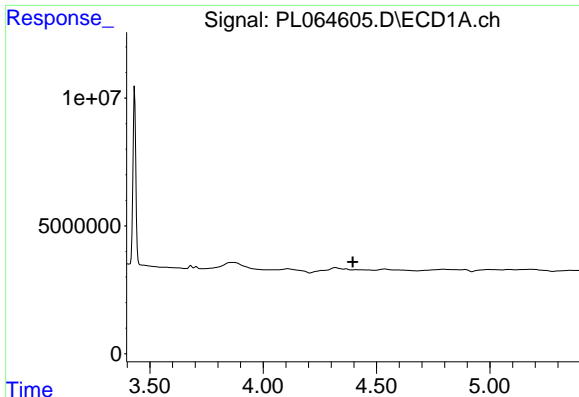
#1 Tetrachloro-m-xylene  
 R.T.: 4.108 min  
 Delta R.T.: 0.000 min  
 Response: 49422348  
 Conc: 20.75 ng/ml



#4 Heptachlor  
 R.T.: 0.000 min  
 Exp R.T. : 4.445 min  
 Response: 0  
 Conc: N.D.



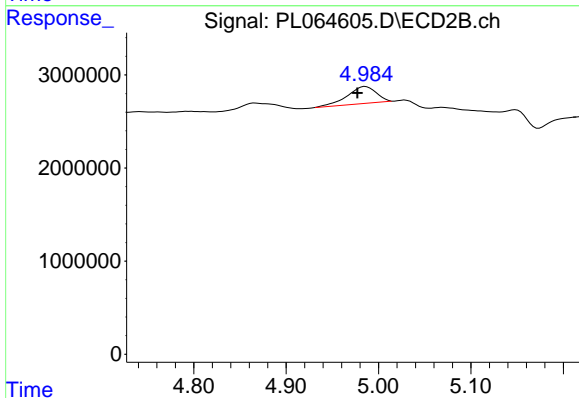
#4 Heptachlor  
 R.T.: 5.300 min  
 Delta R.T.: -0.012 min  
 Response: 7875927  
 Conc: 2.26 ng/ml



#6 beta-BHC

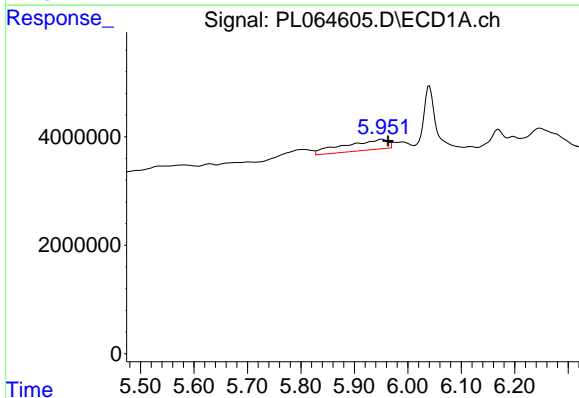
R.T.: 0.000 min  
 Exp R.T.: 4.395 min  
 Response: 0  
 Conc: N.D.

Instrument :  
 ECD\_L  
 ClientSampleId :  
 PB134443BL



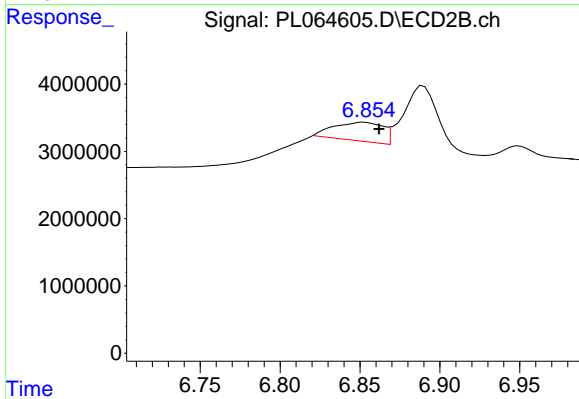
#6 beta-BHC

R.T.: 4.986 min  
 Delta R.T.: 0.009 min  
 Response: 4056967  
 Conc: 2.40 ng/ml



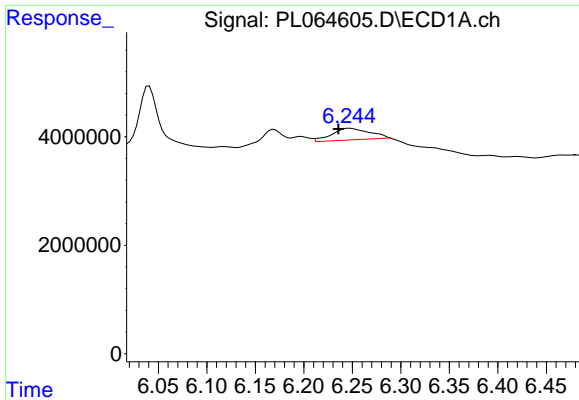
#14 Endrin

R.T.: 5.952 min  
 Delta R.T.: -0.011 min  
 Response: 10849289  
 Conc: 2.97 ng/ml



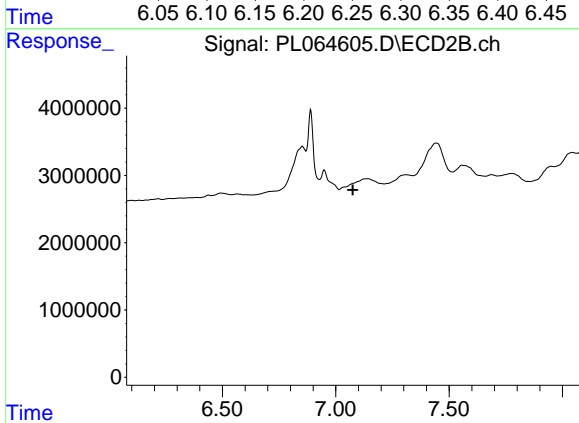
#14 Endrin

R.T.: 6.853 min  
 Delta R.T.: -0.009 min  
 Response: 5955151  
 Conc: 2.59 ng/ml

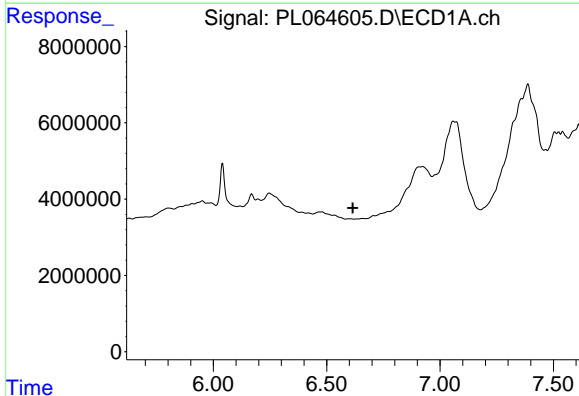


#15 Endosulfan II  
 R.T.: 6.247 min  
 Delta R.T.: 0.011 min  
 Response: 5902614  
 Conc: 1.63 ng/ml

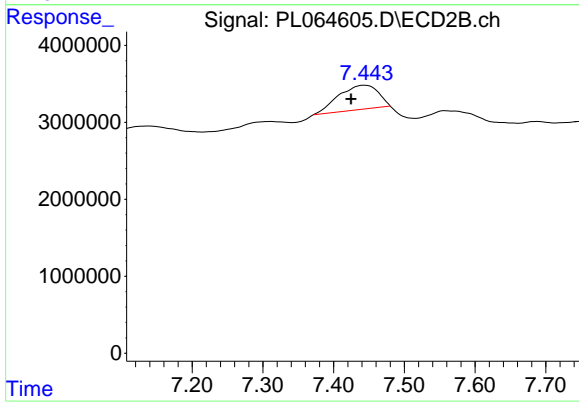
Instrument :  
 ECD\_L  
 ClientSampleId :  
 PB134443BL



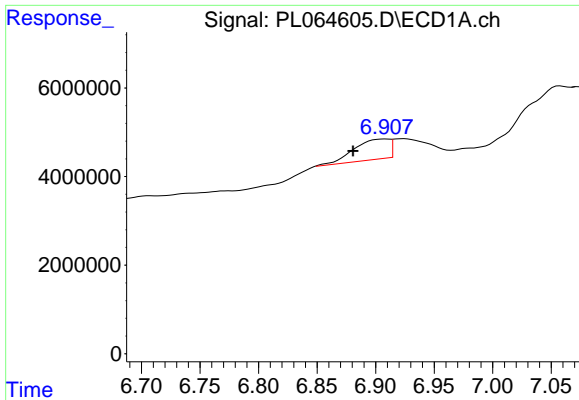
#15 Endosulfan II  
 R.T.: 0.000 min  
 Exp R.T. : 7.075 min  
 Response: 0  
 Conc: N.D.



#19 Endosulfan Sulfate  
 R.T.: 0.000 min  
 Exp R.T. : 6.616 min  
 Response: 0  
 Conc: N.D.

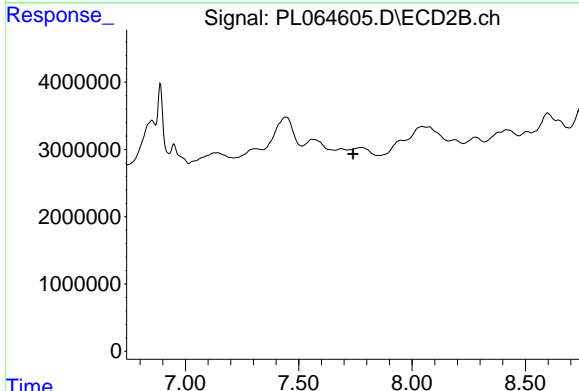


#19 Endosulfan Sulfate  
 R.T.: 7.444 min  
 Delta R.T.: 0.019 min  
 Response: 12358823  
 Conc: 5.14 ng/ml

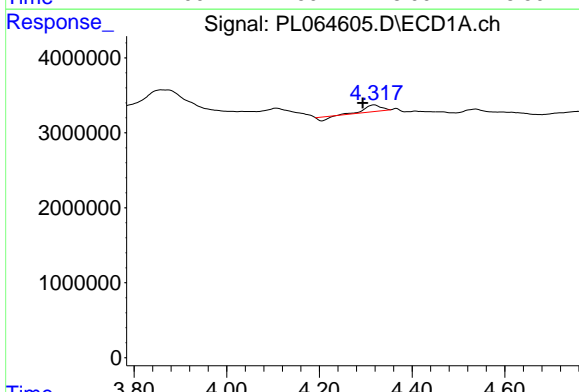


#20 Methoxychlor  
 R.T.: 6.908 min  
 Delta R.T.: 0.028 min  
 Response: 9607420  
 Conc: 5.32 ng/ml

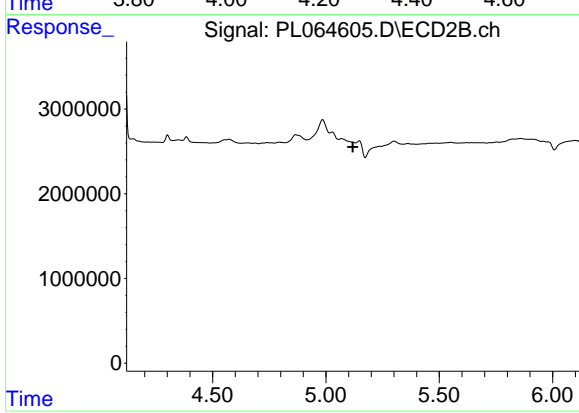
Instrument :  
 ECD\_L  
 ClientSampleId :  
 PB134443BL



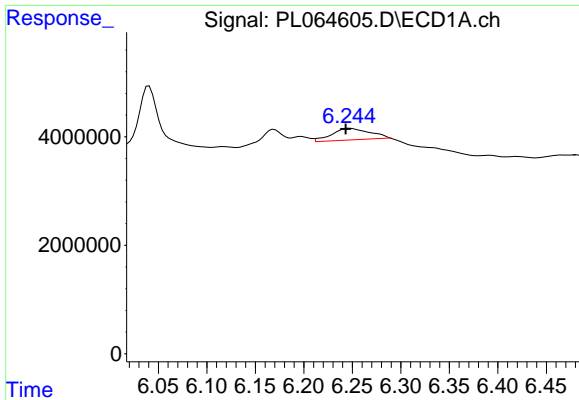
#20 Methoxychlor  
 R.T.: 0.000 min  
 Exp R.T. : 7.740 min  
 Response: 0  
 Conc: N.D.



#23 Chlordane-1  
 R.T.: 4.319 min  
 Delta R.T.: 0.026 min  
 Response: 1721877  
 Conc: 15.66 ng/ml



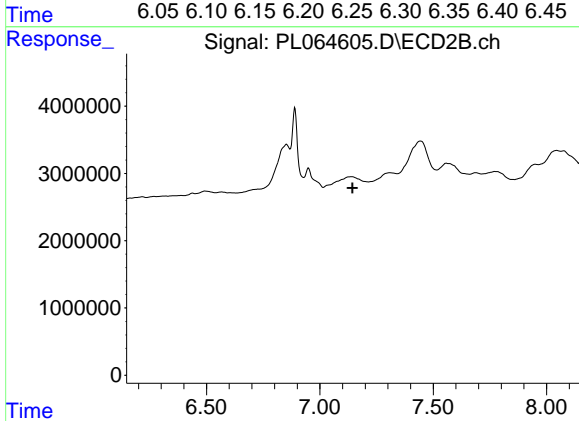
#23 Chlordane-1  
 R.T.: 0.000 min  
 Exp R.T. : 5.119 min  
 Response: 0  
 Conc: N.D.



#27 Chlordane-5

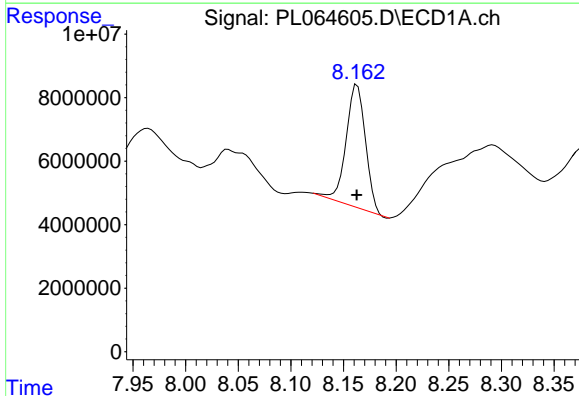
R.T.: 6.247 min  
 Delta R.T.: 0.004 min  
 Response: 5902614  
 Conc: 49.58 ng/ml

Instrument :  
 ECD\_L  
 ClientSampleId :  
 PB134443BL



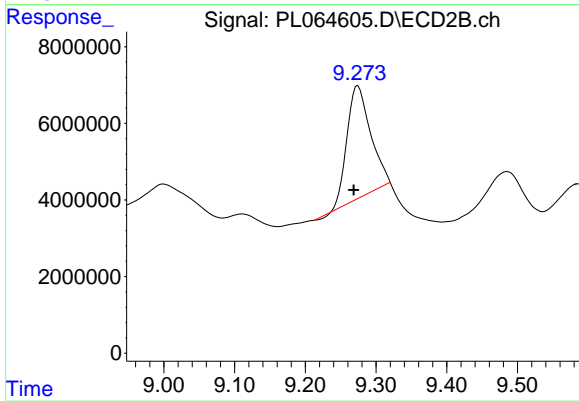
#27 Chlordane-5

R.T.: 0.000 min  
 Exp R.T. : 7.144 min  
 Response: 0  
 Conc: N.D.



#28 Decachlorobiphenyl

R.T.: 8.163 min  
 Delta R.T.: 0.000 min  
 Response: 49837866  
 Conc: 15.81 ng/ml



#28 Decachlorobiphenyl

R.T.: 9.274 min  
 Delta R.T.: 0.006 min  
 Response: 68708108  
 Conc: 33.56 ng/ml