

Data Path : Z:\pestpcbsrv\HPCHEM1\ECD_L\Data\PL020323\
 Data File : PL080724.D
 Signal(s) : Signal #1: ECD1A.ch Signal #2: ECD2B.ch
 Acq On : 03 Feb 2023 12:05
 Operator : AR\AJ
 Sample : 01397-01RE
 Misc :
 ALS Vial : 8 Sample Multiplier: 1

Instrument :
 ECD_L
 ClientSampleId :

Integration File signal 1: autoint1.e
 Integration File signal 2: autoint2.e
 Quant Time: Feb 03 23:40:44 2023
 Quant Method : Z:\pestpcbsrv\HPCHEM1\ECD_L\methods\PL012023.M
 Quant Title : GC Extractables
 QLast Update : Sun Jan 22 23:56:48 2023
 Response via : Initial Calibration
 Integrator: ChemStation

Volume Inj. : 1 µl
 Signal #1 Phase : ZB-MR2 Signal #2 Phase: ZB-MR1
 Signal #1 Info : 30M x 0.32mm x0.2 Signal #2 Info : 30M x 0.32mm x0.5µm

	Compound	RT#1	RT#2	Resp#1	Resp#2	ng/ml	ng/ml

System Monitoring Compounds							
1)	SA Tetrachlo...	3.351	2.689	19944797	13389777	9.299	6.096 #
28)	SA Decachlor...	8.787	7.836	54883228	14726155	31.348	6.181 #
Target Compounds							
2)	A alpha-BHC	3.785f	3.182	607990	-176837	0.192	N.D. #
3)	MA gamma-BHC...	4.139	3.492f	3485704	103.4E6	1.186	34.620 #
4)	MA Heptachlor	4.729f	3.870	5025811	3169010	1.701	0.996 #
5)	MB Aldrin	5.063	4.157f	2457210	5808357	0.898	1.969 #
6)	B beta-BHC	4.302f	3.824	2575757	1598034	1.887	1.197 #
7)	B delta-BHC	4.557	4.055	2820289	1468388	0.974	0.509 #
8)	Heptachlo...	5.481	4.638	3475350	534339	1.343	0.192 #
9)	A Endosulfan I	0.000	5.031f	0	2644468	N.D.	1.017 #
10)	B gamma-Chl...	5.730	4.913f	1432429	1446445	0.567	0.510
11)	B alpha-Chl...	5.805	4.957	1149917	4467516	0.456	1.560 #
12)	B 4,4'-DDE	5.988	5.141	702905	3033774	0.316	1.286 #
13)	MA Dieldrin	6.140	5.280	418079	476545	0.175	0.176
14)	MA Endrin	6.339f	5.576f	1034624	12597163	0.478	5.427 #
15)	B Endosulfa...	6.584	5.834	899969	1024589	0.393	0.492 #
16)	A 4,4'-DDD	6.490	5.700	-2841488	7146801	N.D.	3.803
17)	MA 4,4'-DDT	6.805	5.945	7606818	437928	3.661	0.208 #
18)	B Endrin al...	6.712	6.009f	2086977	2852811	1.255	1.562
19)	B Endosulfa...	6.945	6.241	88192	3460936	0.043	1.488 #
20)	A Methoxychlor	7.300	6.528	172010	16727722	0.156	13.785 #
22)	Mirex	0.000	6.921f	0	3466036	N.D.	1.522 #
23)	Chlordane-1	4.525f	3.686	-489729	4202297	N.D.	51.608
24)	Chlordane-2	5.036	4.279	7053973	2966882	73.136	32.908 #
25)	Chlordane-3	5.730	4.913f	1432429	1446445	4.239	5.484 #
26)	Chlordane-4	5.805	4.957	1149917	4467516	2.665	16.589 #
27)	Chlordane-5	6.663	5.644f	-1974222	6044557	N.D.	84.948

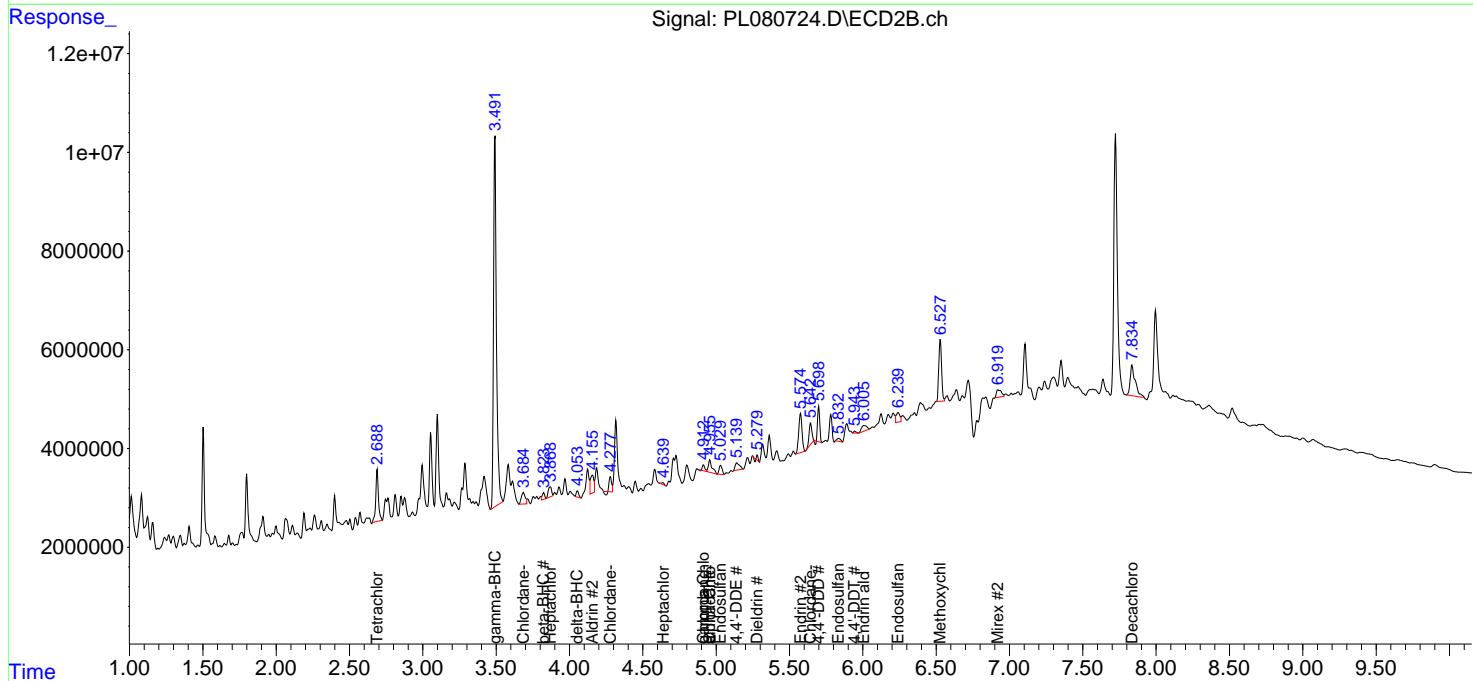
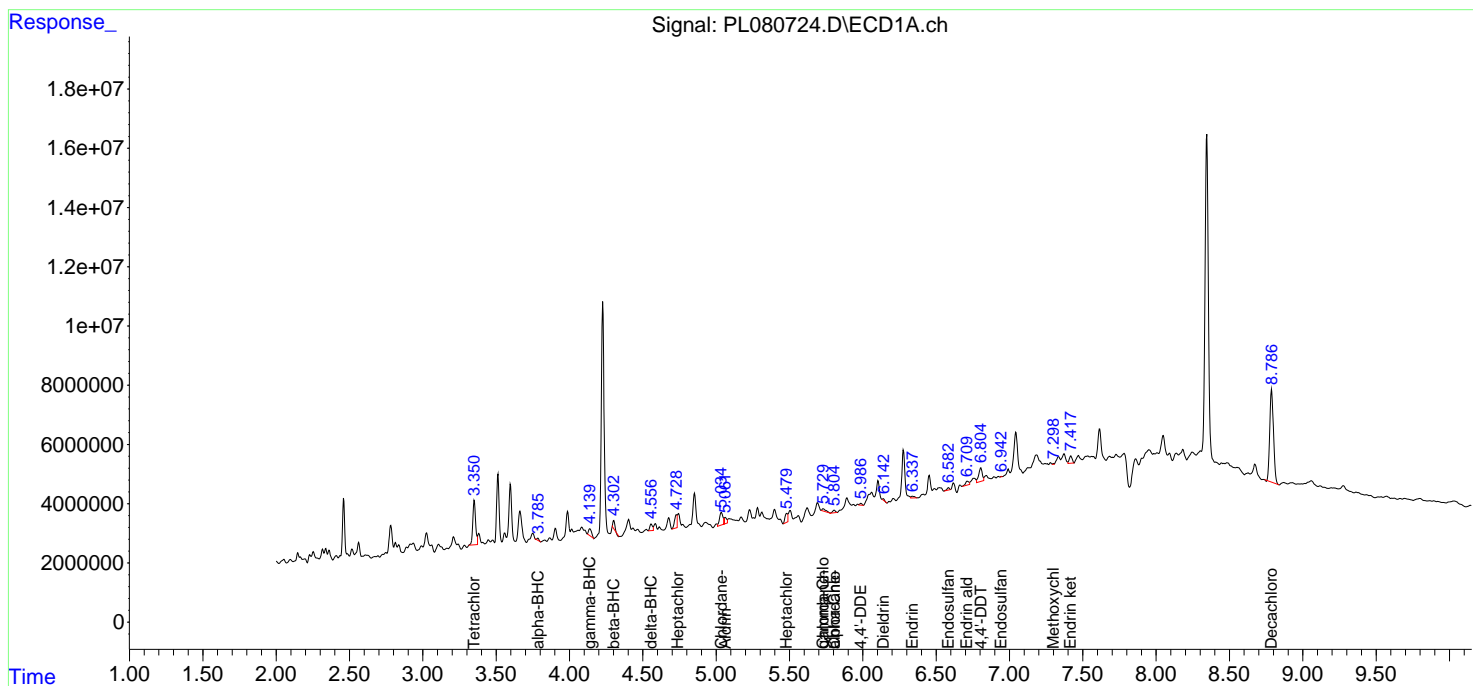
(f)=RT Delta > 1/2 Window (#)=Amounts differ by > 25% (m)=manual int.

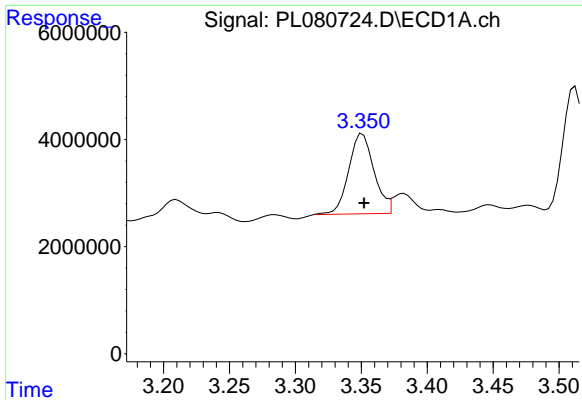
Data Path : Z:\pestpcbsrv\HPCHEM1\ECD_L\Data\PL020323\
 Data File : PL080724.D
 Signal(s) : Signal #1: ECD1A.ch Signal #2: ECD2B.ch
 Acq On : 03 Feb 2023 12:05
 Operator : AR\AJ
 Sample : 01397-01RE
 Misc :
 ALS Vial : 8 Sample Multiplier: 1

Instrument :
 ECD_L
 ClientSampleId :

Integration File signal 1: autoint1.e
 Integration File signal 2: autoint2.e
 Quant Time: Feb 03 23:40:44 2023
 Quant Method : Z:\pestpcbsrv\HPCHEM1\ECD_L\methods\PL012023.M
 Quant Title : GC Extractables
 QLast Update : Sun Jan 22 23:56:48 2023
 Response via : Initial Calibration
 Integrator: ChemStation

Volume Inj. : 1 µl
 Signal #1 Phase : ZB-MR2 Signal #2 Phase: ZB-MR1
 Signal #1 Info : 30M x 0.32mm x0.2 Signal #2 Info : 30M x 0.32mm x0.5µm

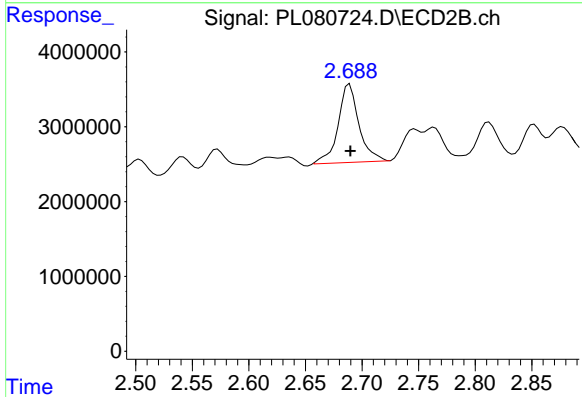




#1 Tetrachloro-m-xylene

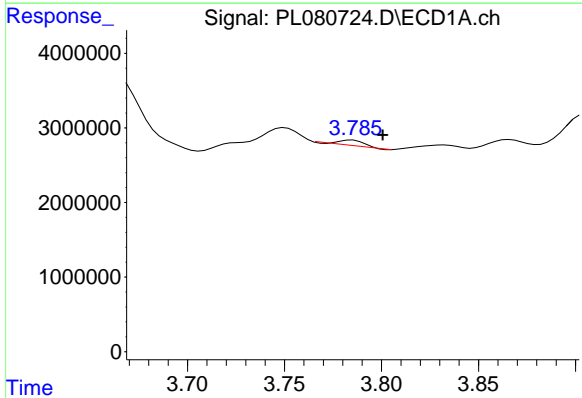
R.T.: 3.351 min
 Delta R.T.: 0.000 min
 Response: 19944797
 Conc: 9.30 ng/ml

Instrument :
 ECD_L
 ClientSampleId :



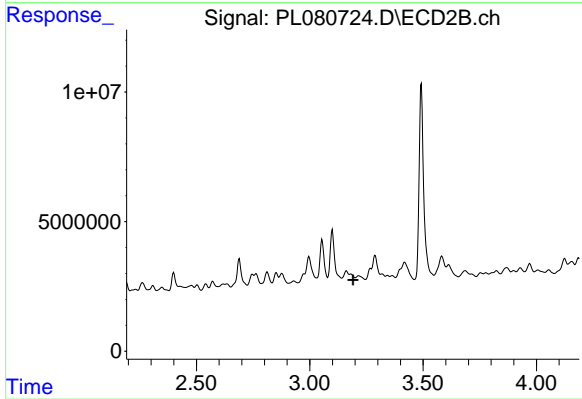
#1 Tetrachloro-m-xylene

R.T.: 2.689 min
 Delta R.T.: 0.000 min
 Response: 13389777
 Conc: 6.10 ng/ml



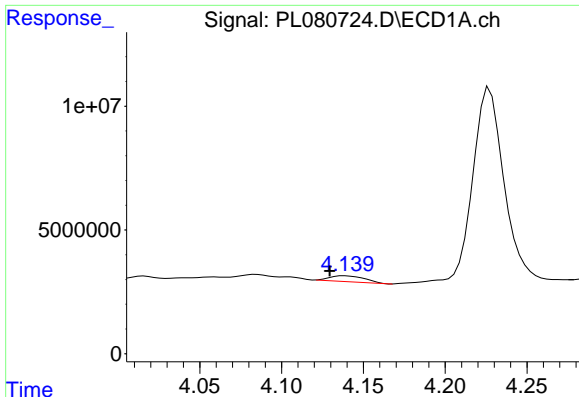
#2 alpha-BHC

R.T.: 3.785 min
 Delta R.T.: -0.016 min
 Response: 607990
 Conc: 0.19 ng/ml



#2 alpha-BHC

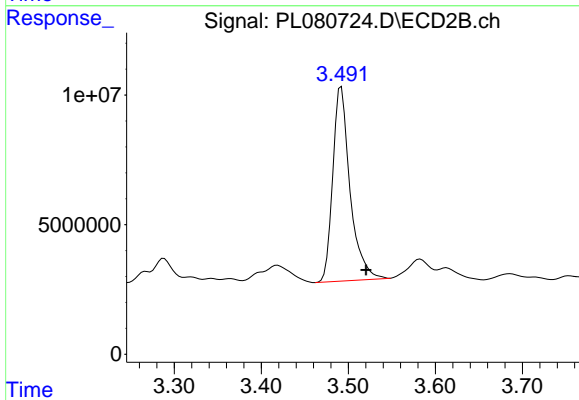
R.T.: 3.182 min
 Delta R.T.: -0.009 min
 Response: -176837
 Conc: N.D.



#3 gamma-BHC (Lindane)

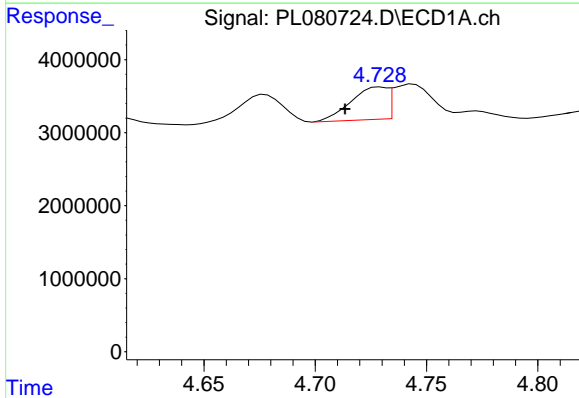
R.T.: 4.139 min
 Delta R.T.: 0.010 min
 Response: 3485704
 Conc: 1.19 ng/ml

Instrument :
 ECD_L
 ClientSampleId :



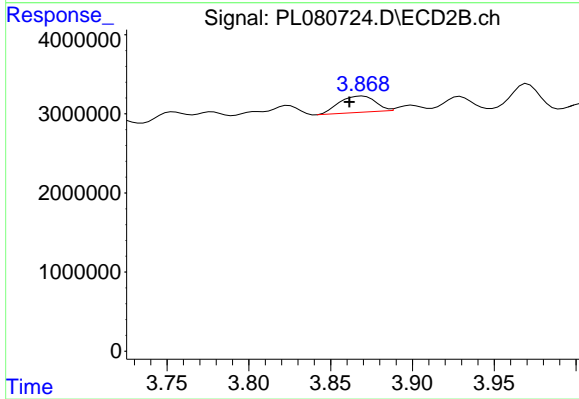
#3 gamma-BHC (Lindane)

R.T.: 3.492 min
 Delta R.T.: -0.028 min
 Response: 103419133
 Conc: 34.62 ng/ml



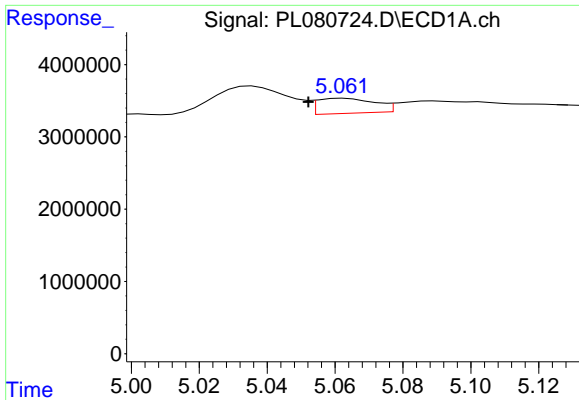
#4 Heptachlor

R.T.: 4.729 min
 Delta R.T.: 0.016 min
 Response: 5025811
 Conc: 1.70 ng/ml



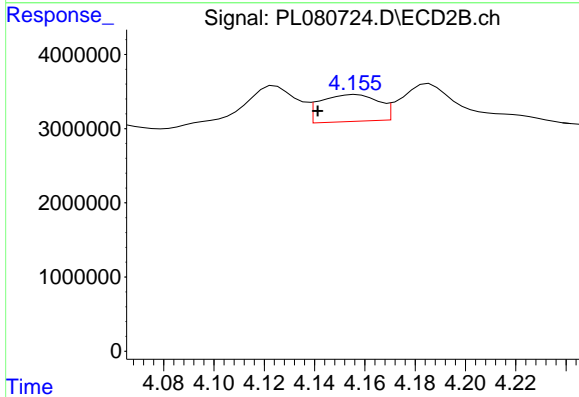
#4 Heptachlor

R.T.: 3.870 min
 Delta R.T.: 0.008 min
 Response: 3169010
 Conc: 1.00 ng/ml

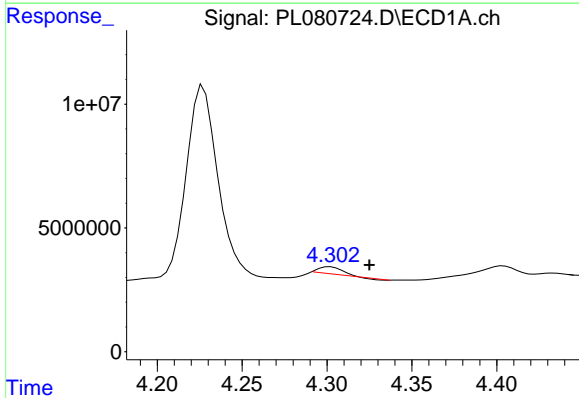


#5 Aldrin
 R.T.: 5.063 min
 Delta R.T.: 0.010 min
 Response: 2457210
 Conc: 0.90 ng/ml

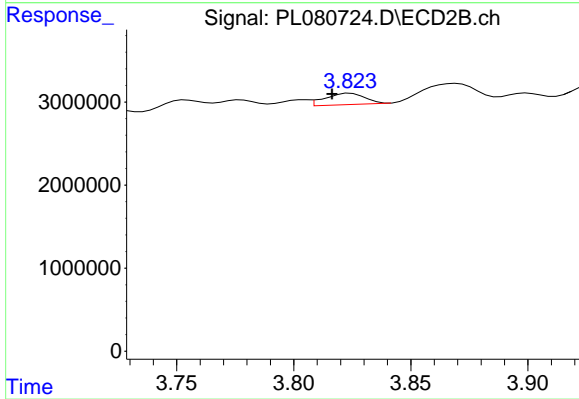
Instrument :
 ECD_L
 ClientSampleId :



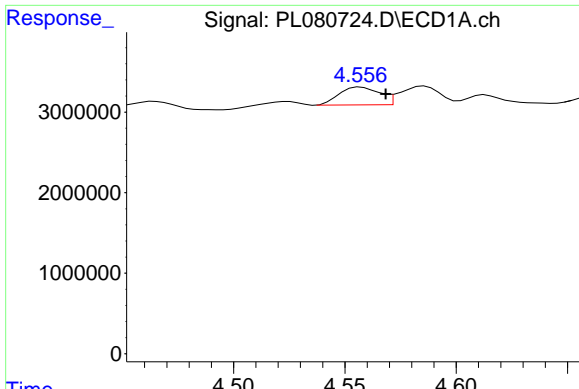
#5 Aldrin
 R.T.: 4.157 min
 Delta R.T.: 0.015 min
 Response: 5808357
 Conc: 1.97 ng/ml



#6 beta-BHC
 R.T.: 4.302 min
 Delta R.T.: -0.023 min
 Response: 2575757
 Conc: 1.89 ng/ml



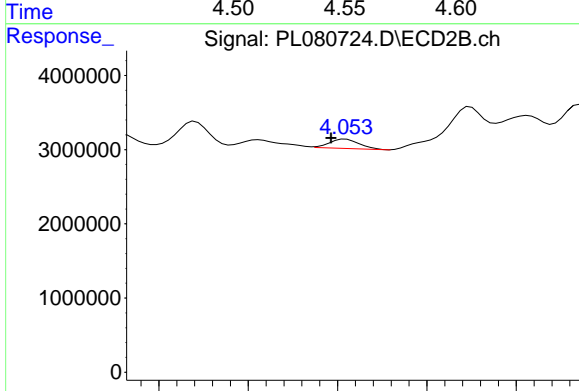
#6 beta-BHC
 R.T.: 3.824 min
 Delta R.T.: 0.008 min
 Response: 1598034
 Conc: 1.20 ng/ml



#7 delta-BHC

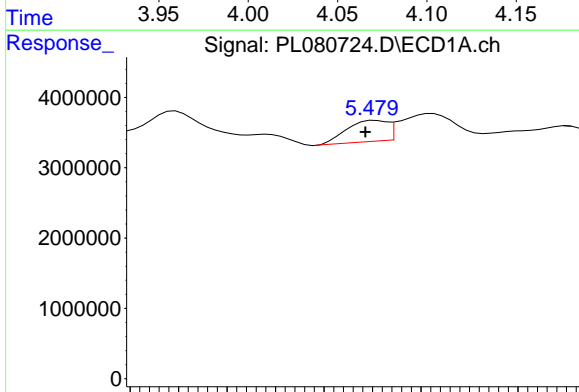
R.T.: 4.557 min
 Delta R.T.: -0.011 min
 Response: 2820289
 Conc: 0.97 ng/ml

Instrument :
 ECD_L
 ClientSampleId :



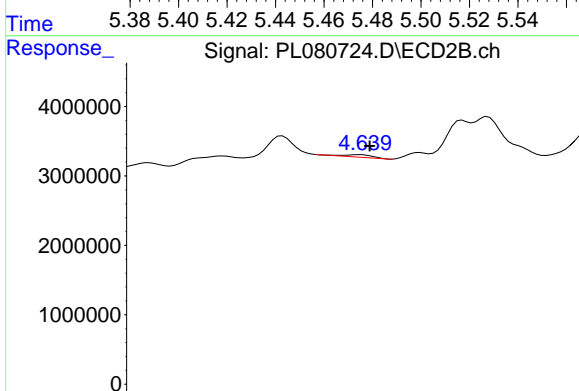
#7 delta-BHC

R.T.: 4.055 min
 Delta R.T.: 0.008 min
 Response: 1468388
 Conc: 0.51 ng/ml



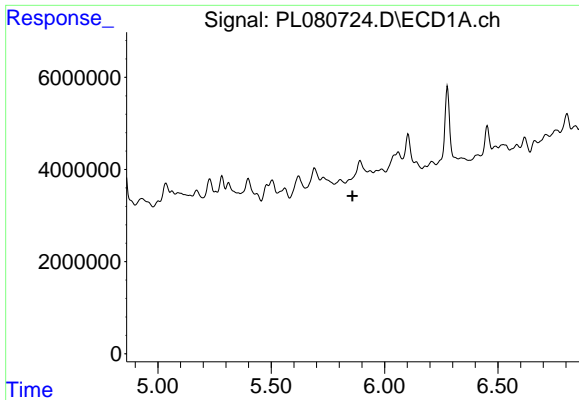
#8 Heptachlor epoxide

R.T.: 5.481 min
 Delta R.T.: 0.004 min
 Response: 3475350
 Conc: 1.34 ng/ml



#8 Heptachlor epoxide

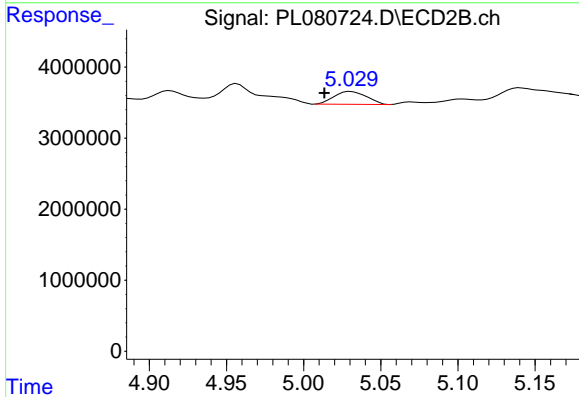
R.T.: 4.638 min
 Delta R.T.: -0.006 min
 Response: 534339
 Conc: 0.19 ng/ml



#9 Endosulfan I

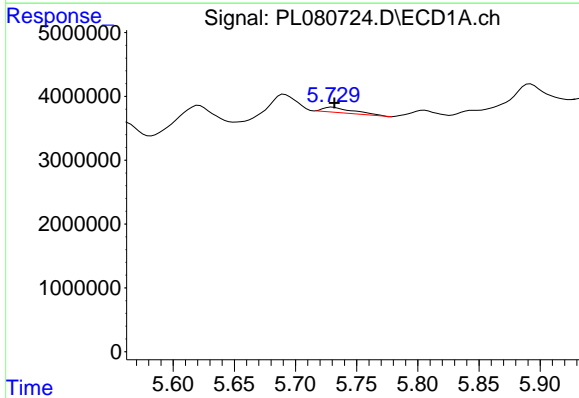
R.T.: 0.000 min
 Exp R.T.: 5.859 min
 Response: 0
 Conc: N.D.

Instrument :
 ECD_L
 ClientSampleId :



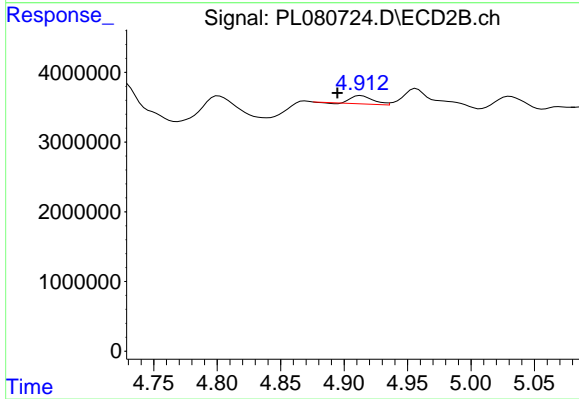
#9 Endosulfan I

R.T.: 5.031 min
 Delta R.T.: 0.017 min
 Response: 2644468
 Conc: 1.02 ng/ml



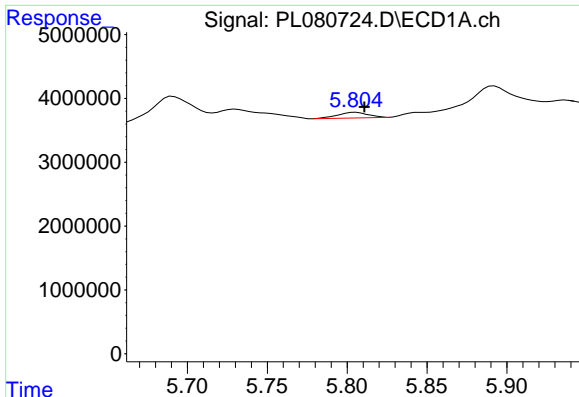
#10 gamma-Chlordane

R.T.: 5.730 min
 Delta R.T.: -0.001 min
 Response: 1432429
 Conc: 0.57 ng/ml



#10 gamma-Chlordane

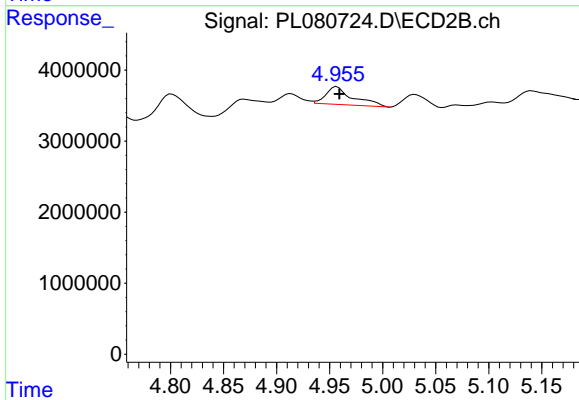
R.T.: 4.913 min
 Delta R.T.: 0.019 min
 Response: 1446445
 Conc: 0.51 ng/ml



#11 alpha-Chlordane

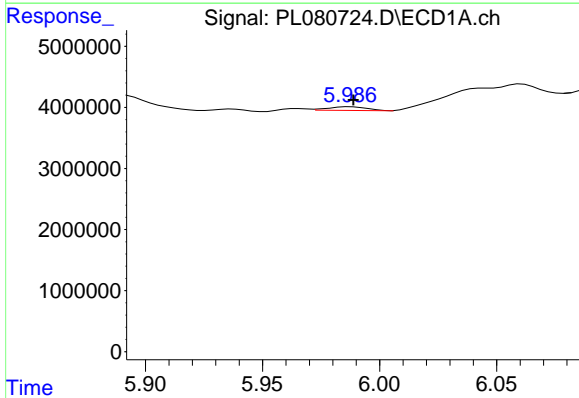
R.T.: 5.805 min
 Delta R.T.: -0.006 min
 Response: 1149917
 Conc: 0.46 ng/ml

Instrument :
 ECD_L
 ClientSampleId :



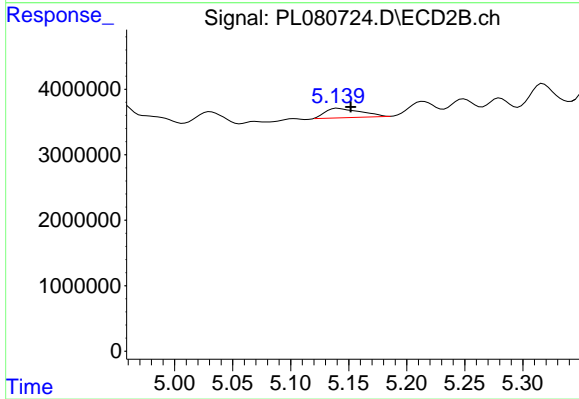
#11 alpha-Chlordane

R.T.: 4.957 min
 Delta R.T.: -0.002 min
 Response: 4467516
 Conc: 1.56 ng/ml



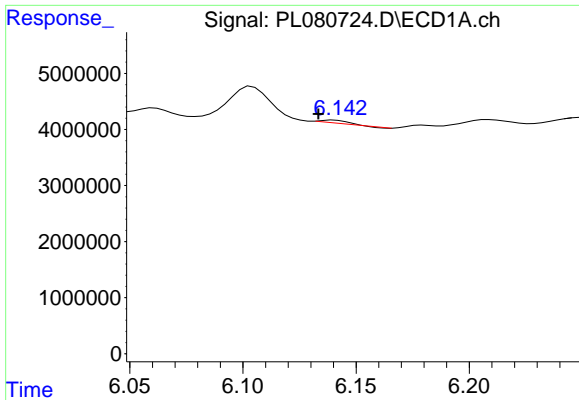
#12 4,4'-DDE

R.T.: 5.988 min
 Delta R.T.: -0.001 min
 Response: 702905
 Conc: 0.32 ng/ml



#12 4,4'-DDE

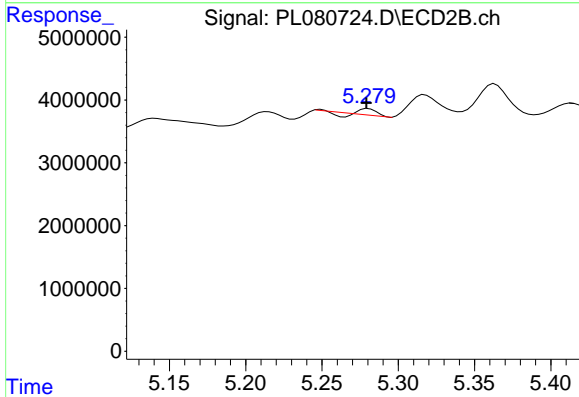
R.T.: 5.141 min
 Delta R.T.: -0.011 min
 Response: 3033774
 Conc: 1.29 ng/ml



#13 Dieldrin

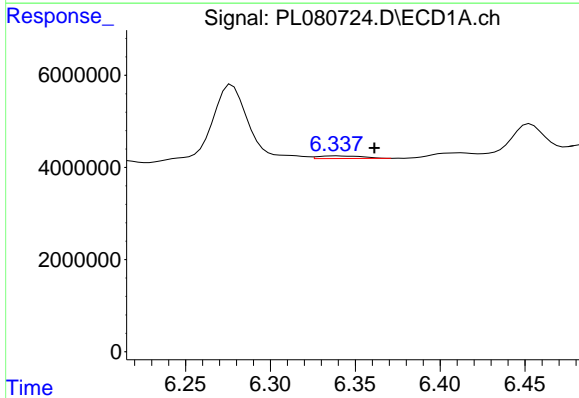
R.T.: 6.140 min
 Delta R.T.: 0.007 min
 Response: 418079
 Conc: 0.17 ng/ml

Instrument :
 ECD_L
 ClientSampleId :



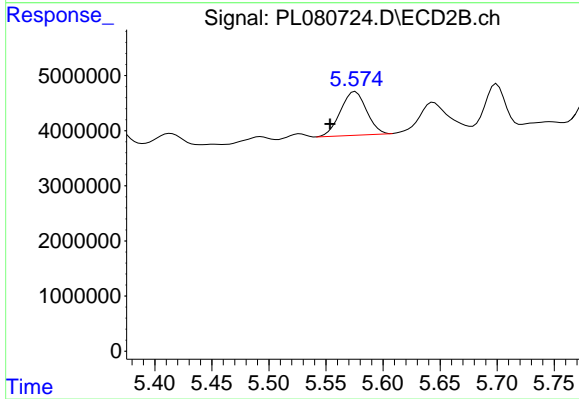
#13 Dieldrin

R.T.: 5.280 min
 Delta R.T.: 0.001 min
 Response: 476545
 Conc: 0.18 ng/ml



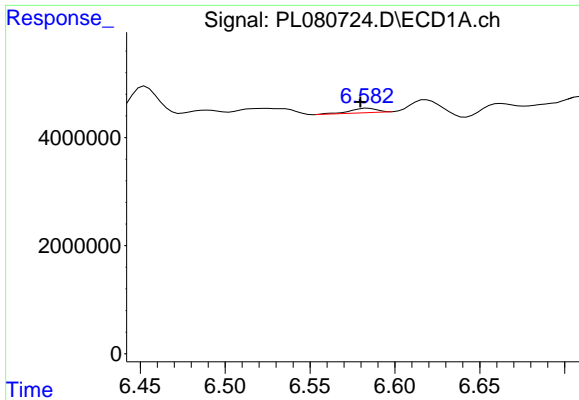
#14 Endrin

R.T.: 6.339 min
 Delta R.T.: -0.023 min
 Response: 1034624
 Conc: 0.48 ng/ml



#14 Endrin

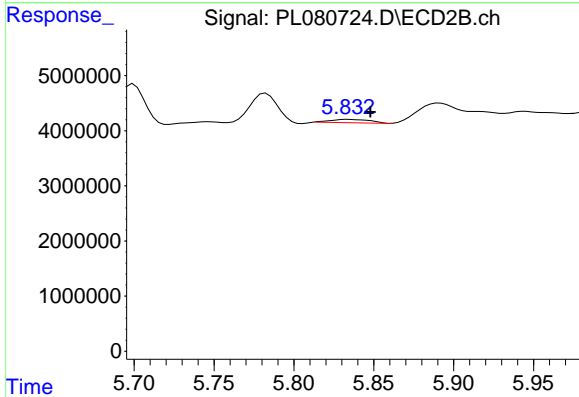
R.T.: 5.576 min
 Delta R.T.: 0.022 min
 Response: 12597163
 Conc: 5.43 ng/ml



#15 Endosulfan II

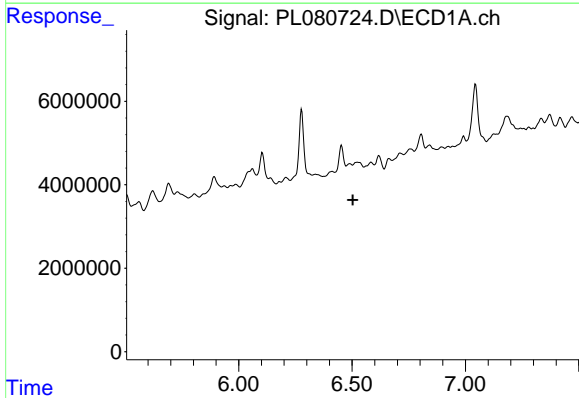
R.T.: 6.584 min
 Delta R.T.: 0.004 min
 Response: 899969
 Conc: 0.39 ng/ml

Instrument :
 ECD_L
 ClientSampleId :



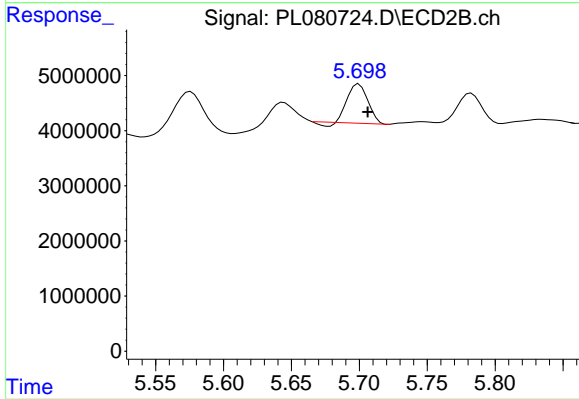
#15 Endosulfan II

R.T.: 5.834 min
 Delta R.T.: -0.014 min
 Response: 1024589
 Conc: 0.49 ng/ml



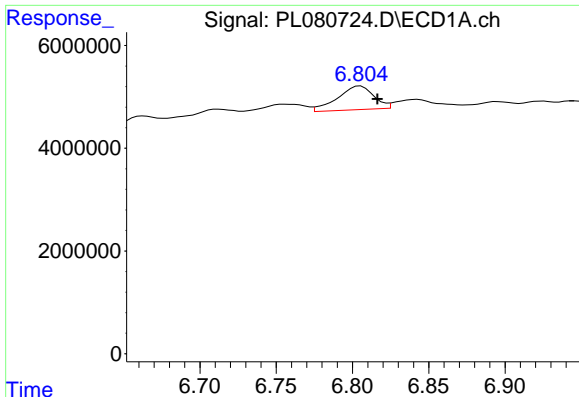
#16 4,4'-DDD

R.T.: 6.490 min
 Delta R.T.: -0.014 min
 Response: -2841488
 Conc: N.D.



#16 4,4'-DDD

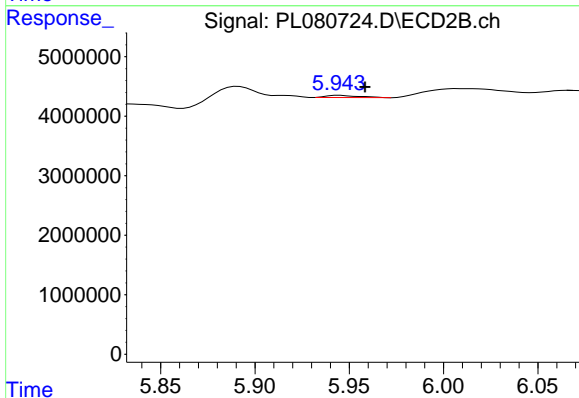
R.T.: 5.700 min
 Delta R.T.: -0.007 min
 Response: 7146801
 Conc: 3.80 ng/ml



#17 4,4'-DDT

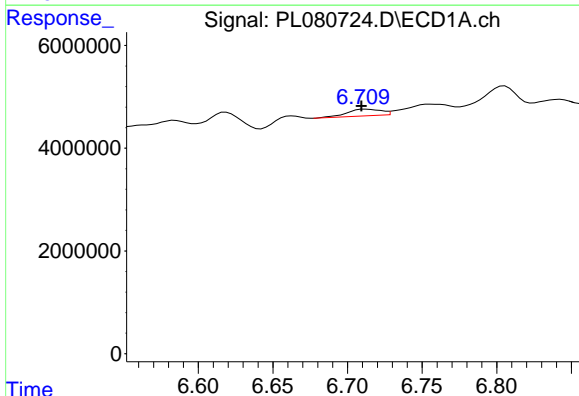
R.T.: 6.805 min
 Delta R.T.: -0.011 min
 Response: 7606818
 Conc: 3.66 ng/ml

Instrument :
 ECD_L
 ClientSampleId :



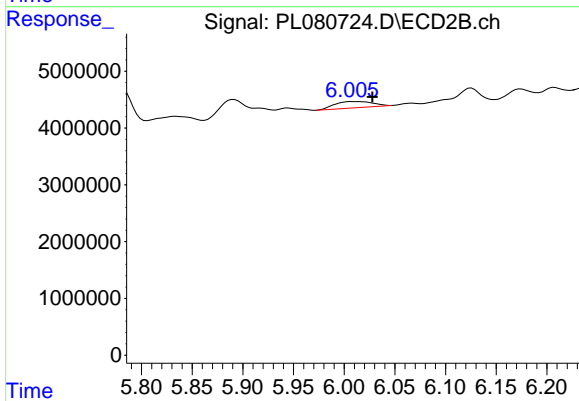
#17 4,4'-DDT

R.T.: 5.945 min
 Delta R.T.: -0.014 min
 Response: 437928
 Conc: 0.21 ng/ml



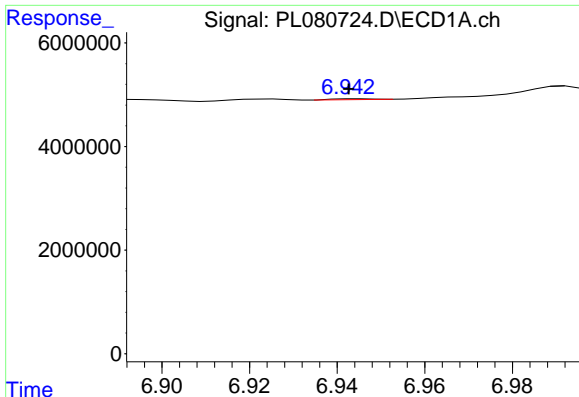
#18 Endrin aldehyde

R.T.: 6.712 min
 Delta R.T.: 0.002 min
 Response: 2086977
 Conc: 1.25 ng/ml



#18 Endrin aldehyde

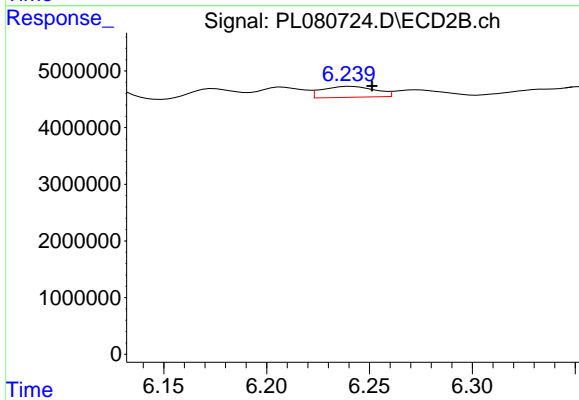
R.T.: 6.009 min
 Delta R.T.: -0.019 min
 Response: 2852811
 Conc: 1.56 ng/ml



#19 Endosulfan Sulfate

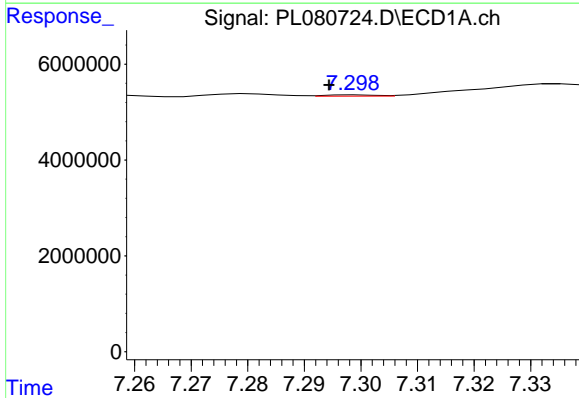
R.T.: 6.945 min
 Delta R.T.: 0.002 min
 Response: 88192
 Conc: 0.04 ng/ml

Instrument :
 ECD_L
 ClientSampleId :



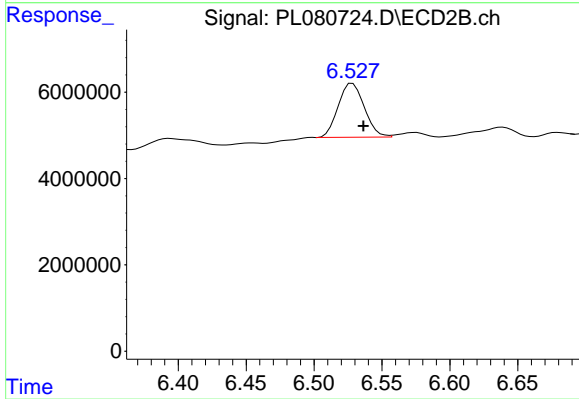
#19 Endosulfan Sulfate

R.T.: 6.241 min
 Delta R.T.: -0.010 min
 Response: 3460936
 Conc: 1.49 ng/ml



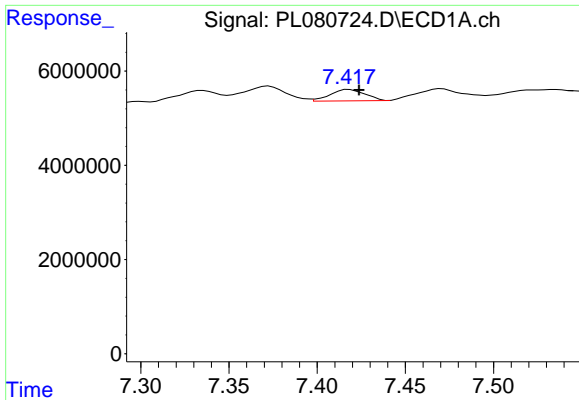
#20 Methoxychlor

R.T.: 7.300 min
 Delta R.T.: 0.005 min
 Response: 172010
 Conc: 0.16 ng/ml



#20 Methoxychlor

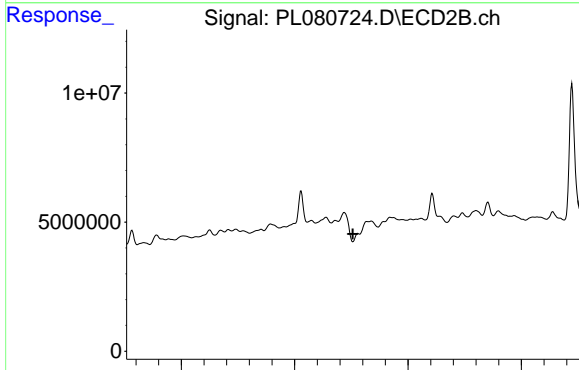
R.T.: 6.528 min
 Delta R.T.: -0.008 min
 Response: 16727722
 Conc: 13.79 ng/ml



#21 Endrin ketone

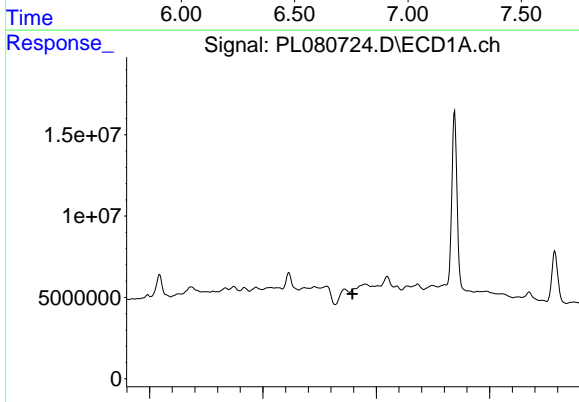
R.T.: 7.418 min
 Delta R.T.: -0.006 min
 Response: 3359767
 Conc: 1.52 ng/ml

Instrument :
 ECD_L
 ClientSampleId :



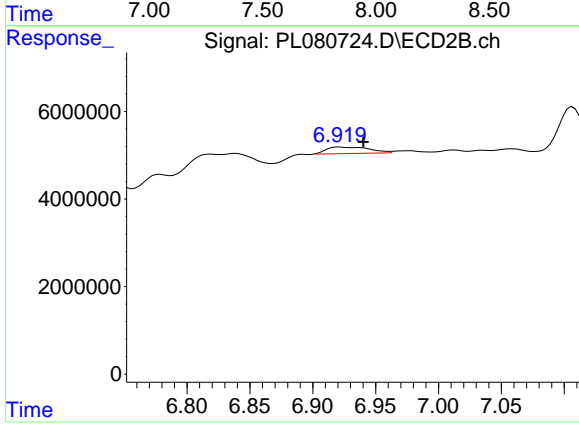
#21 Endrin ketone

R.T.: 6.779 min
 Delta R.T.: 0.023 min
 Response: -8738648
 Conc: N.D.



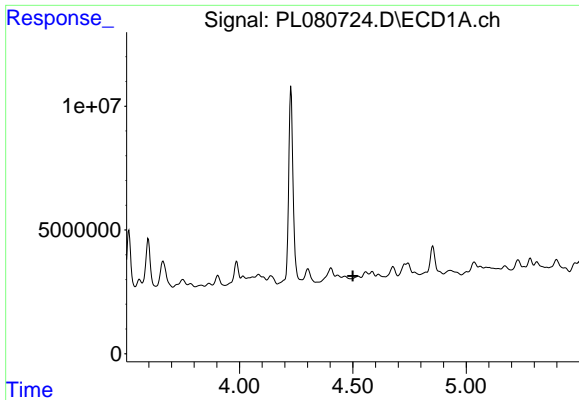
#22 Mirex

R.T.: 0.000 min
 Exp R.T. : 7.896 min
 Response: 0
 Conc: N.D.



#22 Mirex

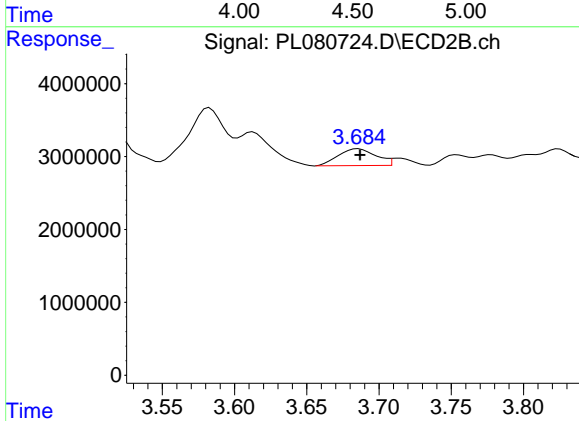
R.T.: 6.921 min
 Delta R.T.: -0.019 min
 Response: 3466036
 Conc: 1.52 ng/ml



#23 Chlordane-1

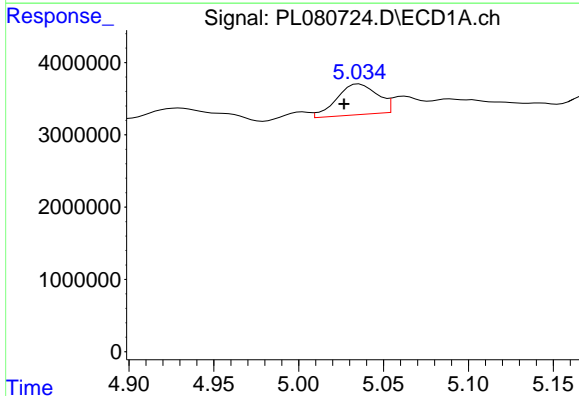
R.T.: 4.525 min
 Delta R.T.: 0.025 min
 Response: -489729
 Conc: N.D.

Instrument :
 ECD_L
 ClientSampleId :



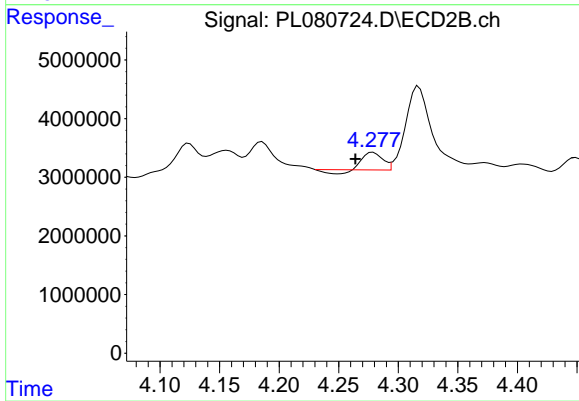
#23 Chlordane-1

R.T.: 3.686 min
 Delta R.T.: -0.001 min
 Response: 4202297
 Conc: 51.61 ng/ml



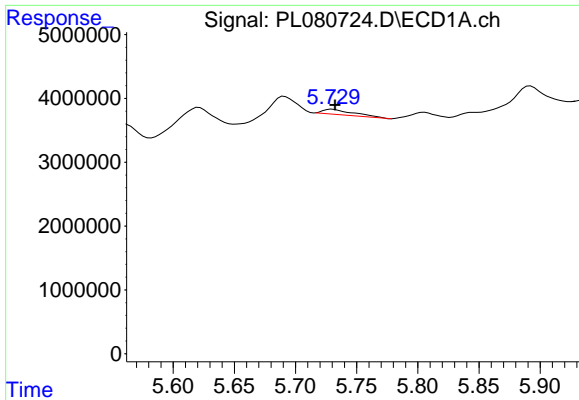
#24 Chlordane-2

R.T.: 5.036 min
 Delta R.T.: 0.009 min
 Response: 7053973
 Conc: 73.14 ng/ml



#24 Chlordane-2

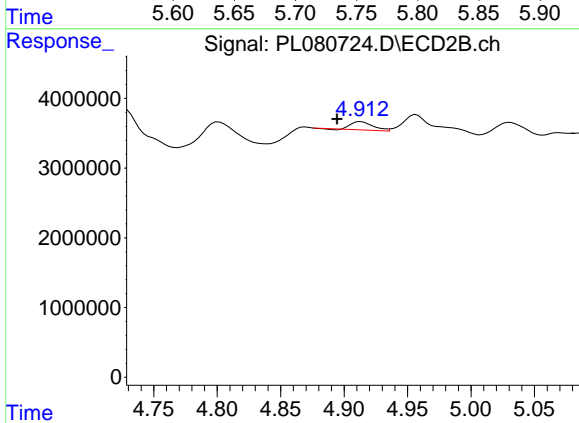
R.T.: 4.279 min
 Delta R.T.: 0.015 min
 Response: 2966882
 Conc: 32.91 ng/ml



#25 Chlordane-3

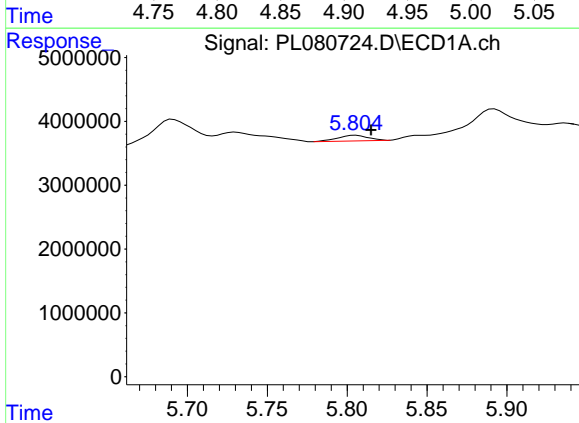
R.T.: 5.730 min
 Delta R.T.: -0.002 min
 Response: 1432429
 Conc: 4.24 ng/ml

Instrument :
 ECD_L
 ClientSampleId :



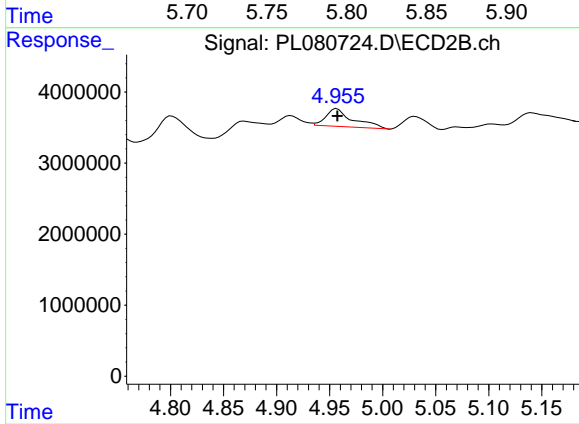
#25 Chlordane-3

R.T.: 4.913 min
 Delta R.T.: 0.019 min
 Response: 1446445
 Conc: 5.48 ng/ml



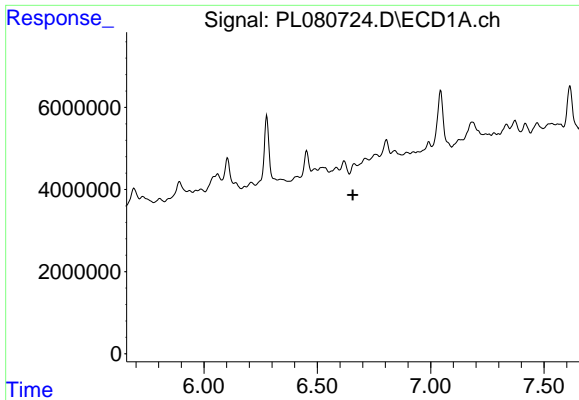
#26 Chlordane-4

R.T.: 5.805 min
 Delta R.T.: -0.010 min
 Response: 1149917
 Conc: 2.67 ng/ml



#26 Chlordane-4

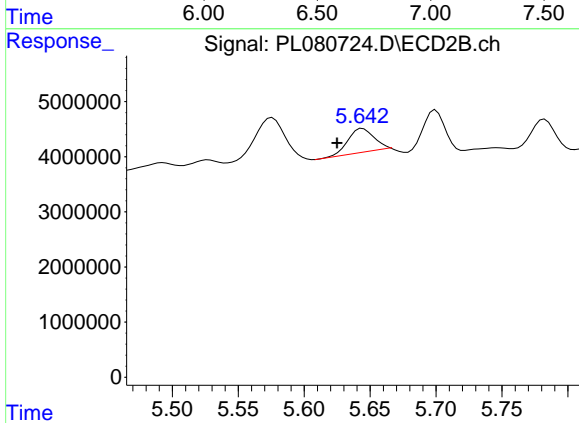
R.T.: 4.957 min
 Delta R.T.: 0.000 min
 Response: 4467516
 Conc: 16.59 ng/ml



#27 Chlordane-5

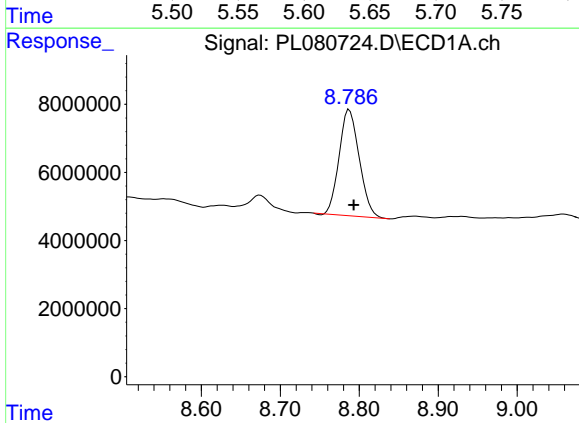
R.T.: 6.663 min
 Delta R.T.: 0.007 min
 Response: -1974222
 Conc: N.D.

Instrument :
 ECD_L
 ClientSampleId :



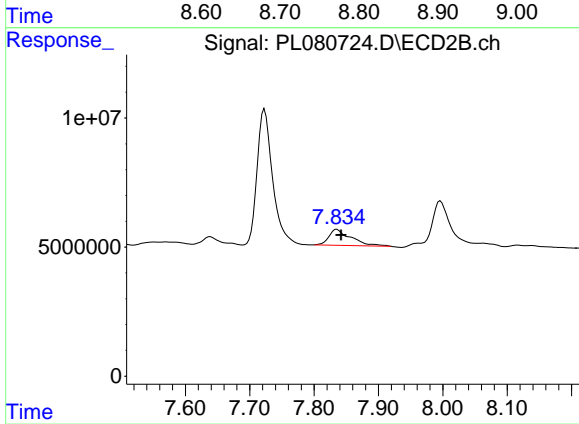
#27 Chlordane-5

R.T.: 5.644 min
 Delta R.T.: 0.019 min
 Response: 6044557
 Conc: 84.95 ng/ml



#28 Decachlorobiphenyl

R.T.: 8.787 min
 Delta R.T.: -0.006 min
 Response: 54883228
 Conc: 31.35 ng/ml



#28 Decachlorobiphenyl

R.T.: 7.836 min
 Delta R.T.: -0.006 min
 Response: 14726155
 Conc: 6.18 ng/ml