

Data Path : Z:\pestpcbsrv\HPCHEM1\ECD_L\Data\PL020323\
 Data File : PL080725.D
 Signal(s) : Signal #1: ECD1A.ch Signal #2: ECD2B.ch
 Acq On : 03 Feb 2023 12:47
 Operator : AR\AJ
 Sample : PB150655BL
 Misc :
 ALS Vial : 9 Sample Multiplier: 1

Instrument :
 ECD_L
 ClientSampleId :

Integration File signal 1: autoint1.e
 Integration File signal 2: autoint2.e
 Quant Time: Feb 03 23:42:06 2023
 Quant Method : Z:\pestpcbsrv\HPCHEM1\ECD_L\methods\PL012023.M
 Quant Title : GC Extractables
 QLast Update : Sun Jan 22 23:56:48 2023
 Response via : Initial Calibration
 Integrator: ChemStation

Volume Inj. : 1 µl
 Signal #1 Phase : ZB-MR2 Signal #2 Phase: ZB-MR1
 Signal #1 Info : 30M x 0.32mm x0.2 Signal #2 Info : 30M x 0.32mm x0.5µm

Compound	RT#1	RT#2	Resp#1	Resp#2	ng/ml	ng/ml

System Monitoring Compounds						
1) SA Tetrachlo...	3.351	2.689	35415484	35709051	16.512	16.258
28) SA Decachlor...	8.789	7.835	29180243	34727152	16.667	14.576
Target Compounds						
2) A alpha-BHC	0.000	3.178	0	21420	N.D.	0.007 #
3) MA gamma-BHC...	0.000	3.544f	0	274335	N.D.	0.092 #
4) MA Heptachlor	4.709	3.863	639092	3732	0.216	0.001 #
5) MB Aldrin	5.057	0.000	106637	0	0.039	N.D. #
6) B beta-BHC	4.346f	3.815	487254	39043	0.357	0.029 #
7) B delta-BHC	4.570	4.048	1468330	7193	0.507	0.002 #
8) B Heptachlo...	5.485	4.643	444252	105300	0.172	0.038 #
9) A Endosulfan I	5.866	5.016	359528	35767	0.152	0.014 #
10) B gamma-Chl...	0.000	4.878f	0	17200	N.D.	0.006 #
11) B alpha-Chl...	5.789f	4.959	57107	45289	0.023	0.016 #
12) B 4,4'-DDE	0.000	5.134f	0	16185	N.D.	0.007 #
13) MA Dieldrin	0.000	5.297f	0	68374	N.D.	0.025 #
14) MA Endrin	6.368	5.547	172284	-1494	0.080	N.D. #
15) B Endosulfa...	0.000	5.862	0	11287	N.D.	0.005 #
17) MA 4,4'-DDT	0.000	5.954	0	17169	N.D.	0.008 #
18) B Endrin al...	0.000	6.017	0	49696	N.D.	0.027 #
19) B Endosulfa...	0.000	6.259	0	77932	N.D.	0.034 #
20) A Methoxychlor	0.000	6.538	0	41152	N.D.	0.034 #
22) Mirex	0.000	6.938	0	4404	N.D.	0.002 #
23) Chlordane-1	0.000	3.693	0	43502	N.D.	0.534 #
24) Chlordane-2	0.000	4.276	0	29331	N.D.	0.325 #
25) Chlordane-3	0.000	4.878f	0	17200	N.D.	0.065 #
26) Chlordane-4	5.789f	4.959	57107	45289	0.132	0.168 #
27) Chlordane-5	0.000	5.605f	0	35860	N.D.	0.504 #

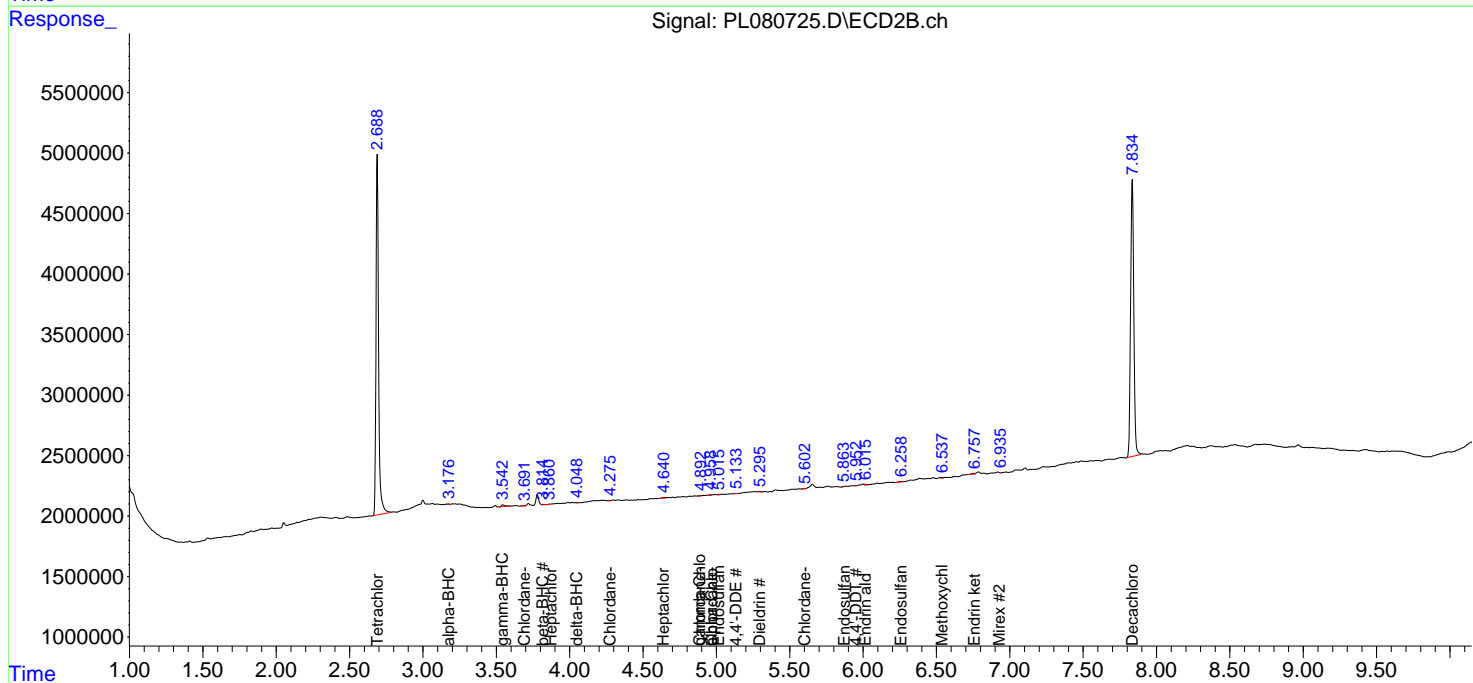
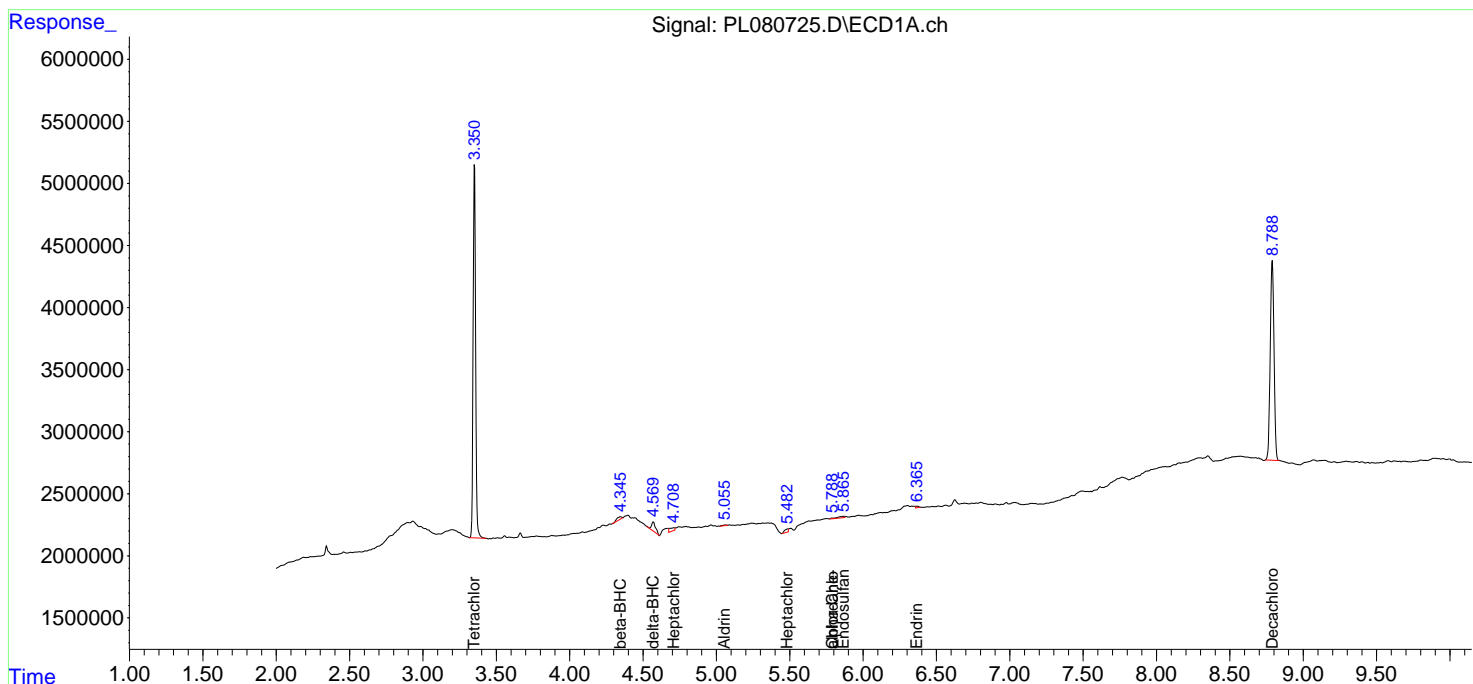
(f)=RT Delta > 1/2 Window (#)=Amounts differ by > 25% (m)=manual int.

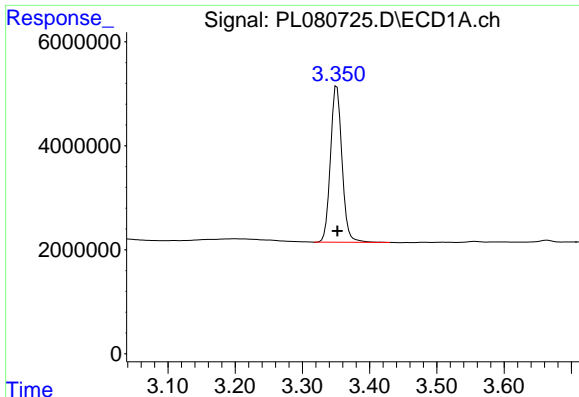
Data Path : Z:\pestpcbsrv\HPCHEM1\ECD_L\Data\PL020323\
 Data File : PL080725.D
 Signal(s) : Signal #1: ECD1A.ch Signal #2: ECD2B.ch
 Acq On : 03 Feb 2023 12:47
 Operator : AR\AJ
 Sample : PB150655BL
 Misc :
 ALS Vial : 9 Sample Multiplier: 1

Instrument :
 ECD_L
 ClientSampleId :

Integration File signal 1: autoint1.e
 Integration File signal 2: autoint2.e
 Quant Time: Feb 03 23:42:06 2023
 Quant Method : Z:\pestpcbsrv\HPCHEM1\ECD_L\methods\PL012023.M
 Quant Title : GC Extractables
 QLast Update : Sun Jan 22 23:56:48 2023
 Response via : Initial Calibration
 Integrator: ChemStation

Volume Inj. : 1 µl
 Signal #1 Phase : ZB-MR2 Signal #2 Phase: ZB-MR1
 Signal #1 Info : 30M x 0.32mm x0.2 Signal #2 Info : 30M x 0.32mm x0.5µm

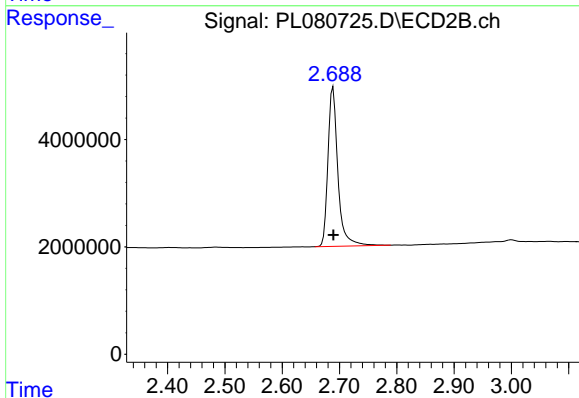




#1 Tetrachloro-m-xylene

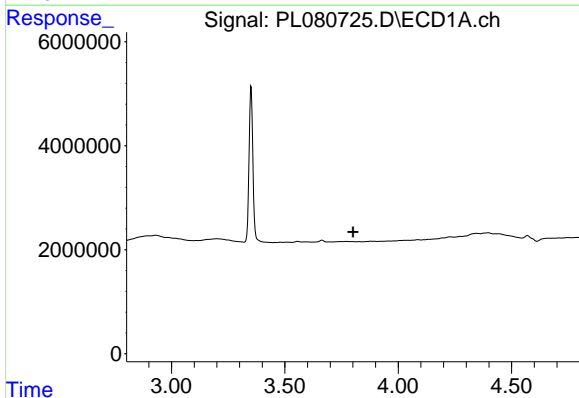
R.T.: 3.351 min
 Delta R.T.: 0.000 min
 Response: 35415484
 Conc: 16.51 ng/ml

Instrument :
 ECD_L
 ClientSampleId :



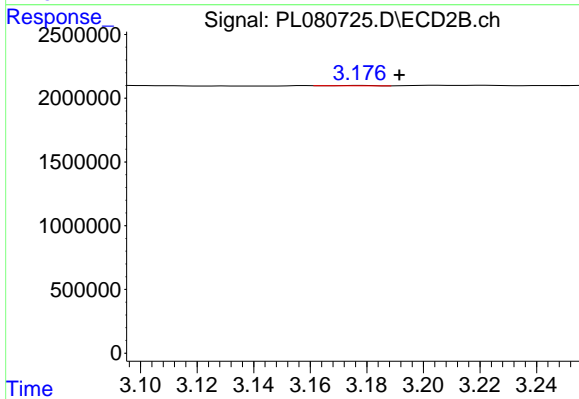
#1 Tetrachloro-m-xylene

R.T.: 2.689 min
 Delta R.T.: 0.000 min
 Response: 35709051
 Conc: 16.26 ng/ml



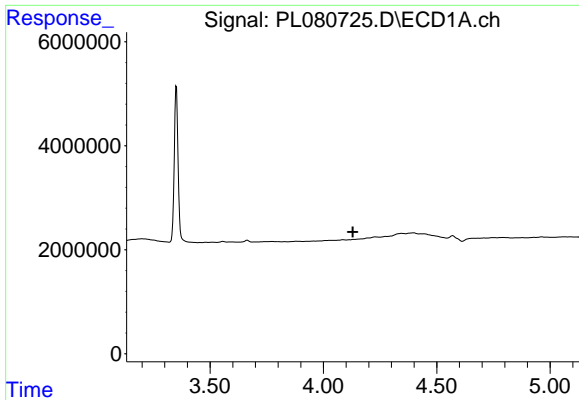
#2 alpha-BHC

R.T.: 0.000 min
 Exp R.T. : 3.801 min
 Response: 0
 Conc: N.D.



#2 alpha-BHC

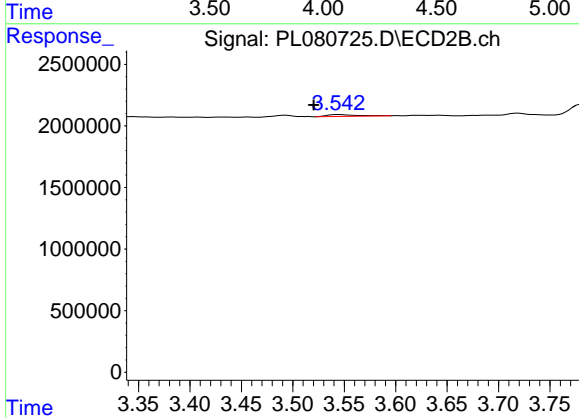
R.T.: 3.178 min
 Delta R.T.: -0.014 min
 Response: 21420
 Conc: 0.01 ng/ml



#3 gamma-BHC (Lindane)

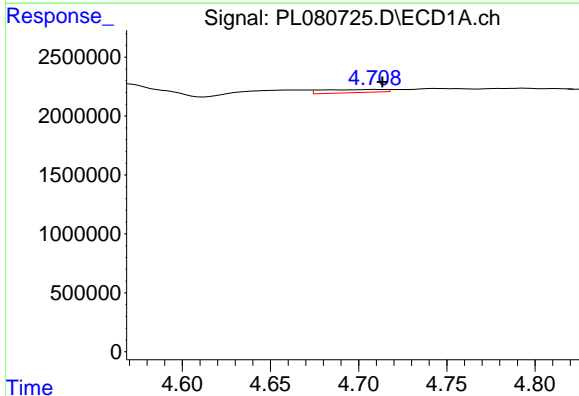
R.T.: 0.000 min
 Exp R.T.: 4.129 min
 Response: 0
 Conc: N.D.

Instrument :
 ECD_L
 ClientSampleId :



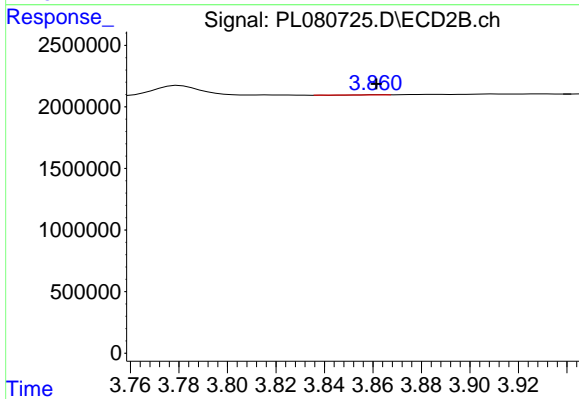
#3 gamma-BHC (Lindane)

R.T.: 3.544 min
 Delta R.T.: 0.023 min
 Response: 274335
 Conc: 0.09 ng/ml



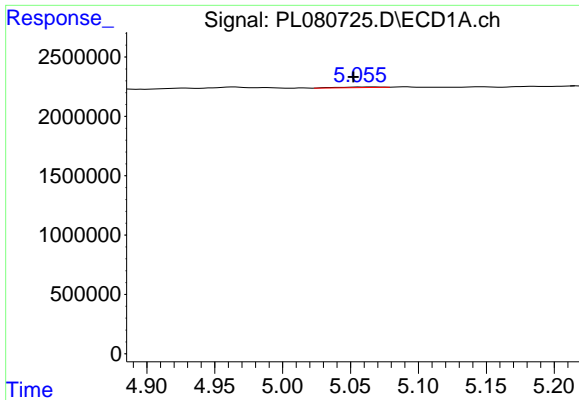
#4 Heptachlor

R.T.: 4.709 min
 Delta R.T.: -0.004 min
 Response: 639092
 Conc: 0.22 ng/ml



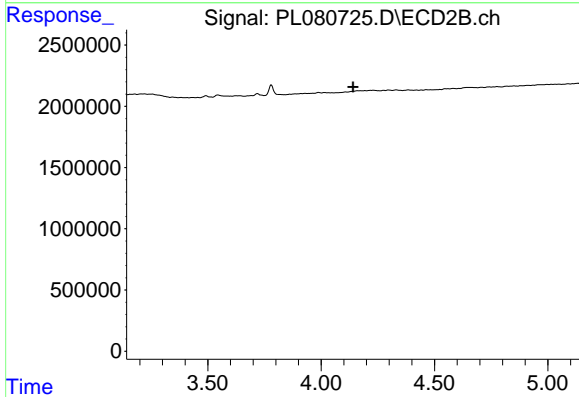
#4 Heptachlor

R.T.: 3.863 min
 Delta R.T.: 0.002 min
 Response: 3732
 Conc: 0.00 ng/ml

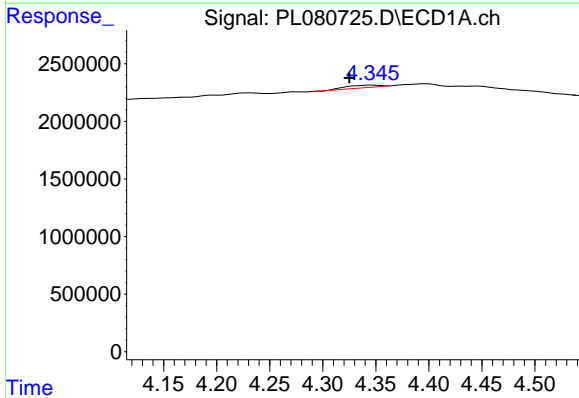


#5 Aldrin
 R.T.: 5.057 min
 Delta R.T.: 0.005 min
 Response: 106637
 Conc: 0.04 ng/ml

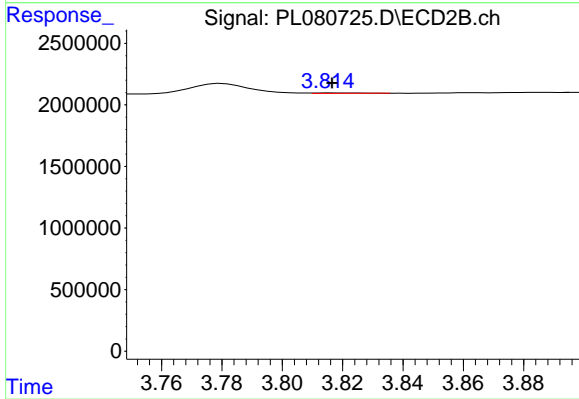
Instrument :
 ECD_L
 ClientSampleId :



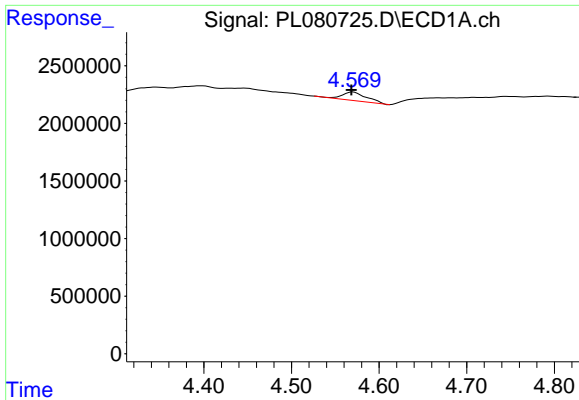
#5 Aldrin
 R.T.: 0.000 min
 Exp R.T. : 4.141 min
 Response: 0
 Conc: N.D.



#6 beta-BHC
 R.T.: 4.346 min
 Delta R.T.: 0.021 min
 Response: 487254
 Conc: 0.36 ng/ml



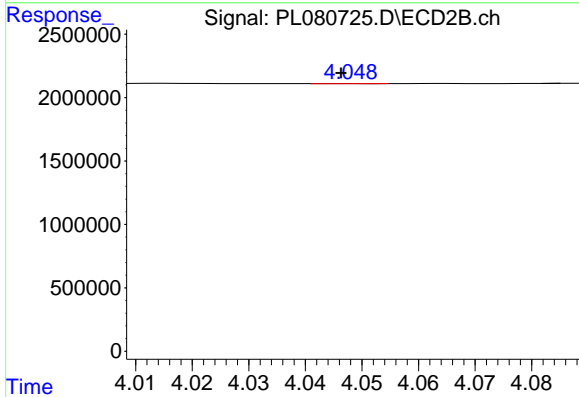
#6 beta-BHC
 R.T.: 3.815 min
 Delta R.T.: -0.001 min
 Response: 39043
 Conc: 0.03 ng/ml



#7 delta-BHC

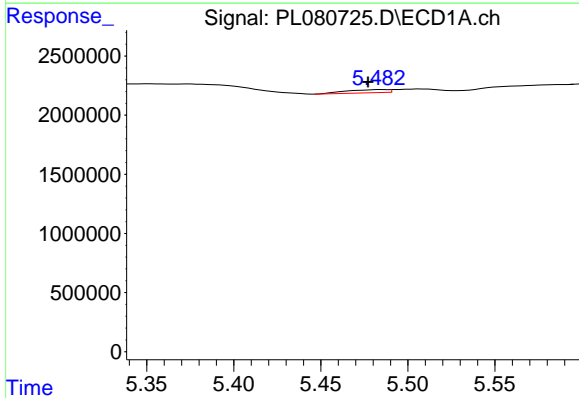
R.T.: 4.570 min
 Delta R.T.: 0.002 min
 Response: 1468330
 Conc: 0.51 ng/ml

Instrument :
 ECD_L
 ClientSampleId :



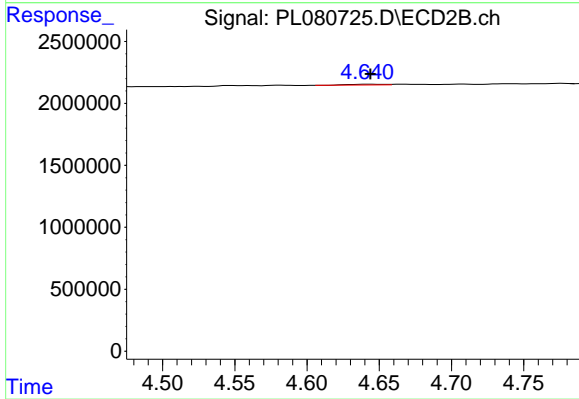
#7 delta-BHC

R.T.: 4.048 min
 Delta R.T.: 0.002 min
 Response: 7193
 Conc: 0.00 ng/ml



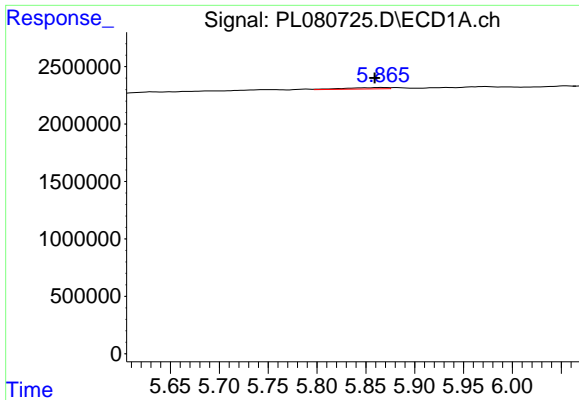
#8 Heptachlor epoxide

R.T.: 5.485 min
 Delta R.T.: 0.007 min
 Response: 444252
 Conc: 0.17 ng/ml



#8 Heptachlor epoxide

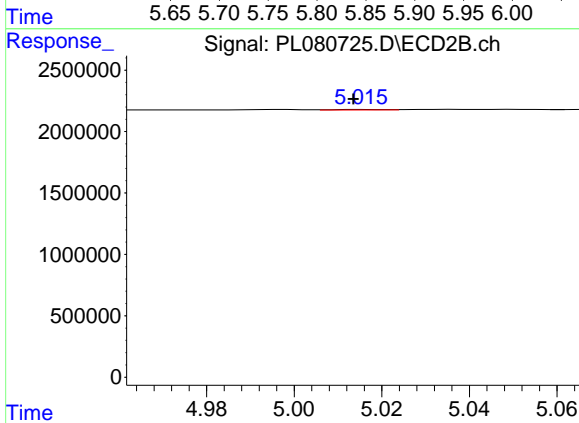
R.T.: 4.643 min
 Delta R.T.: -0.001 min
 Response: 105300
 Conc: 0.04 ng/ml



#9 Endosulfan I

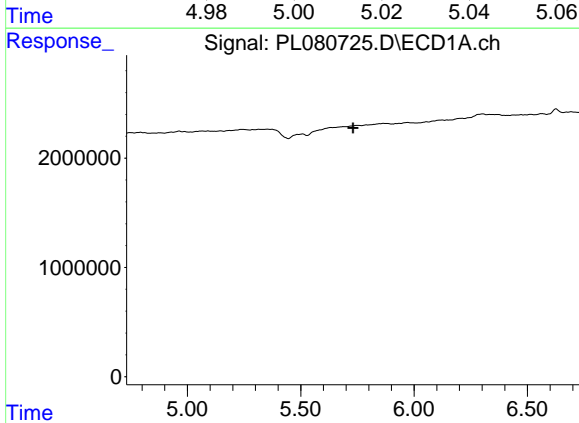
R.T.: 5.866 min
 Delta R.T.: 0.007 min
 Response: 359528
 Conc: 0.15 ng/ml

Instrument :
 ECD_L
 ClientSampleId :



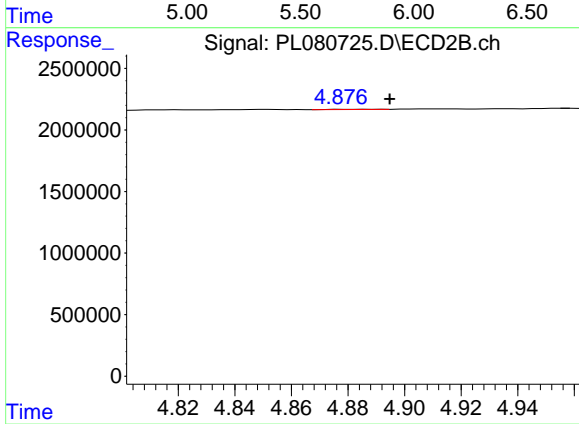
#9 Endosulfan I

R.T.: 5.016 min
 Delta R.T.: 0.003 min
 Response: 35767
 Conc: 0.01 ng/ml



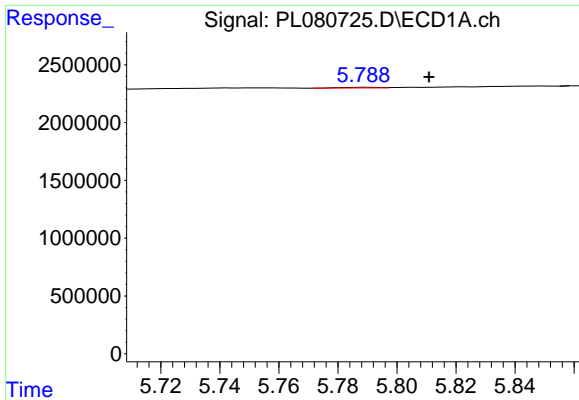
#10 gamma-Chlordane

R.T.: 0.000 min
 Exp R.T. : 5.732 min
 Response: 0
 Conc: N.D.



#10 gamma-Chlordane

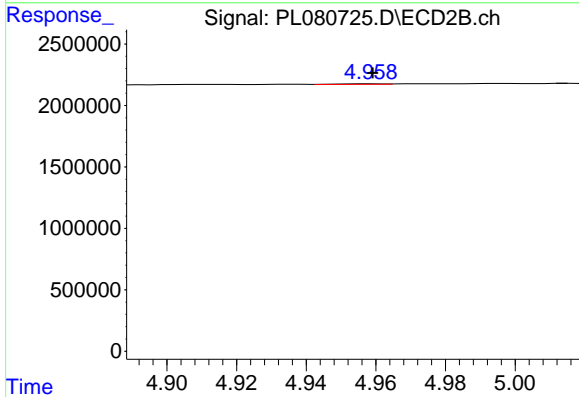
R.T.: 4.878 min
 Delta R.T.: -0.016 min
 Response: 17200
 Conc: 0.01 ng/ml



#11 alpha-Chlordane

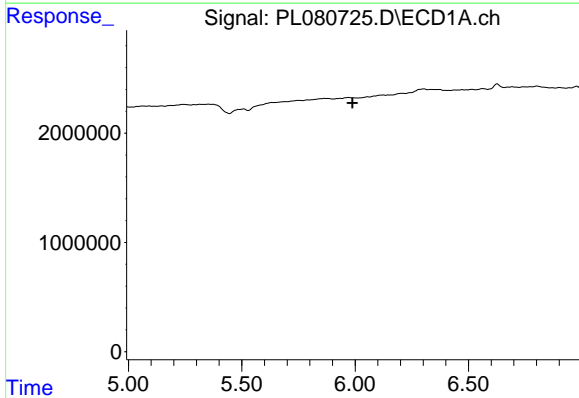
R.T.: 5.789 min
 Delta R.T.: -0.022 min
 Response: 57107
 Conc: 0.02 ng/ml

Instrument :
 ECD_L
 ClientSampleId :



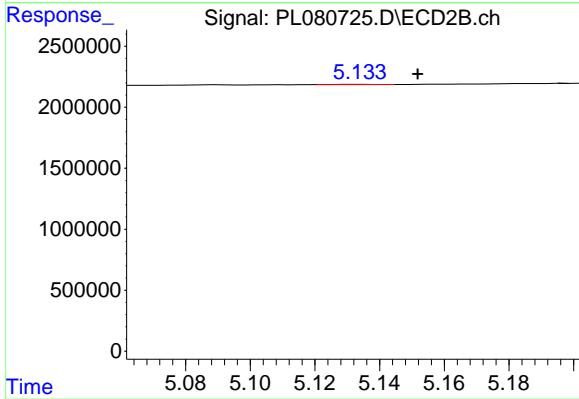
#11 alpha-Chlordane

R.T.: 4.959 min
 Delta R.T.: 0.000 min
 Response: 45289
 Conc: 0.02 ng/ml



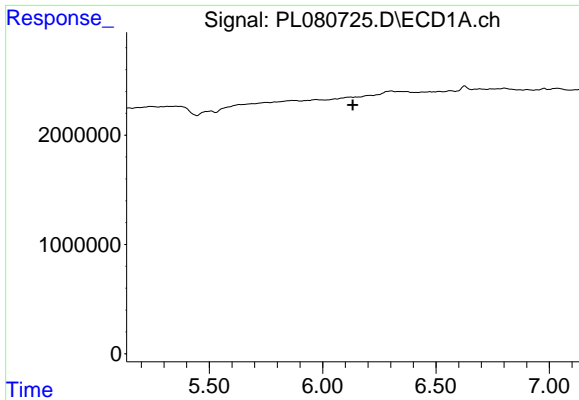
#12 4,4'-DDE

R.T.: 0.000 min
 Exp R.T. : 5.989 min
 Response: 0
 Conc: N.D.



#12 4,4'-DDE

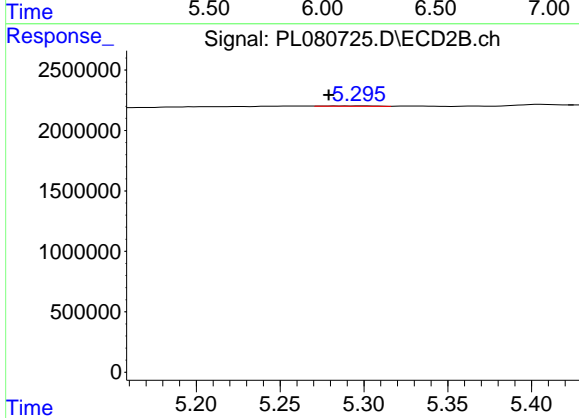
R.T.: 5.134 min
 Delta R.T.: -0.018 min
 Response: 16185
 Conc: 0.01 ng/ml



#13 Dieldrin

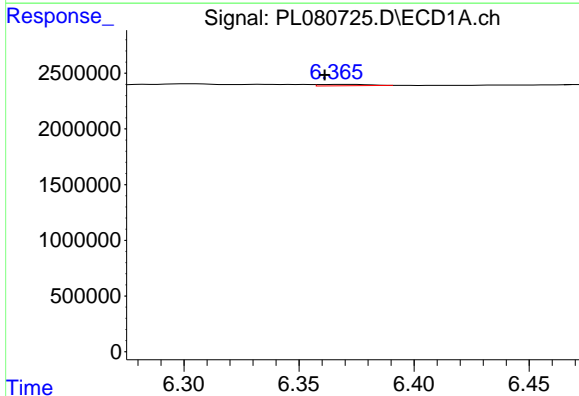
R.T.: 0.000 min
 Exp R.T.: 6.133 min
 Response: 0
 Conc: N.D.

Instrument :
 ECD_L
 ClientSampleId :



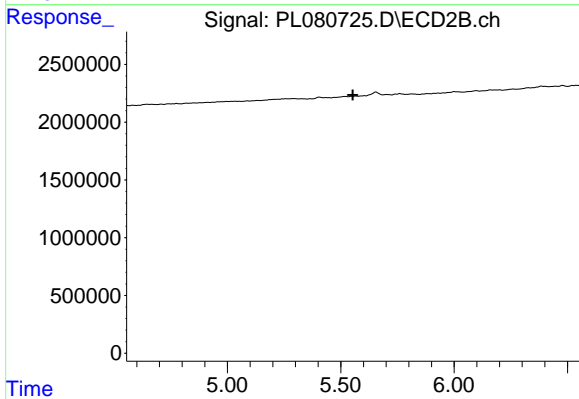
#13 Dieldrin

R.T.: 5.297 min
 Delta R.T.: 0.017 min
 Response: 68374
 Conc: 0.03 ng/ml



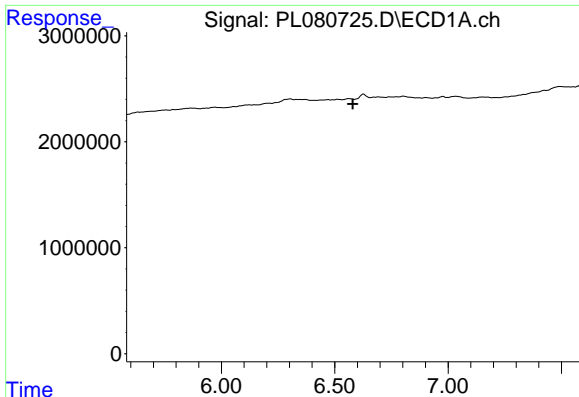
#14 Endrin

R.T.: 6.368 min
 Delta R.T.: 0.007 min
 Response: 172284
 Conc: 0.08 ng/ml



#14 Endrin

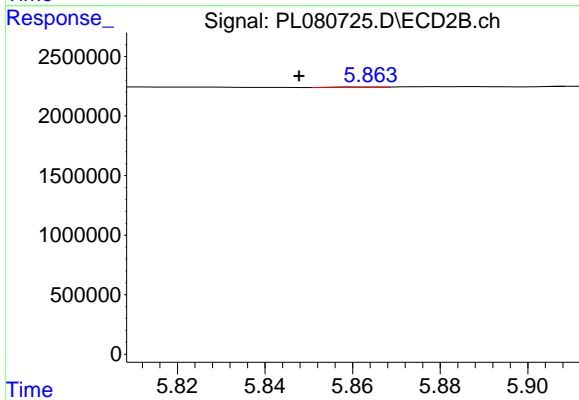
R.T.: 5.547 min
 Delta R.T.: -0.007 min
 Response: -1494
 Conc: N.D.



#15 Endosulfan II

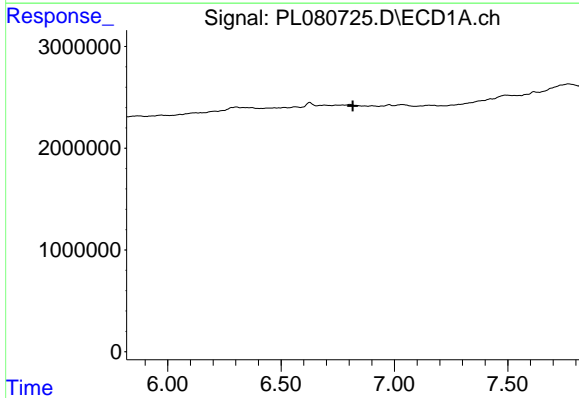
R.T.: 0.000 min
 Exp R.T.: 6.580 min
 Response: 0
 Conc: N.D.

Instrument :
 ECD_L
 ClientSampleId :



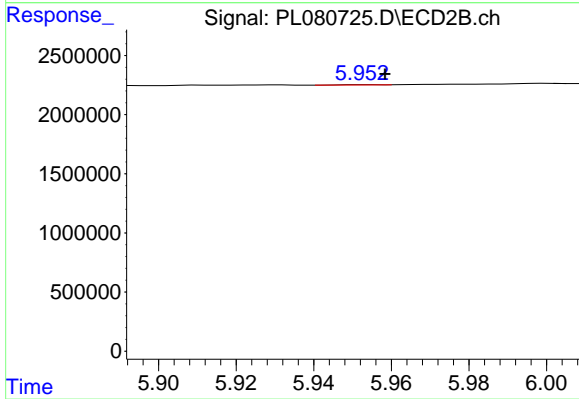
#15 Endosulfan II

R.T.: 5.862 min
 Delta R.T.: 0.014 min
 Response: 11287
 Conc: 0.01 ng/ml



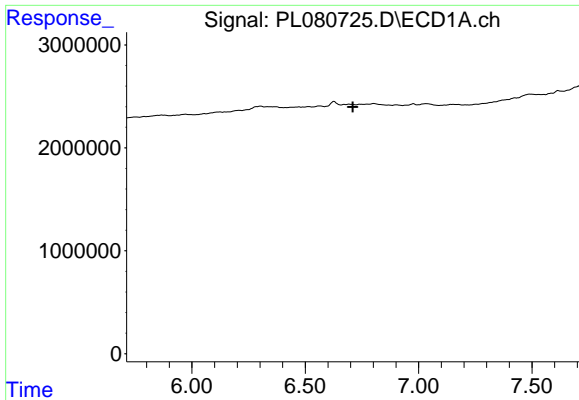
#17 4,4'-DDT

R.T.: 0.000 min
 Exp R.T.: 6.816 min
 Response: 0
 Conc: N.D.



#17 4,4'-DDT

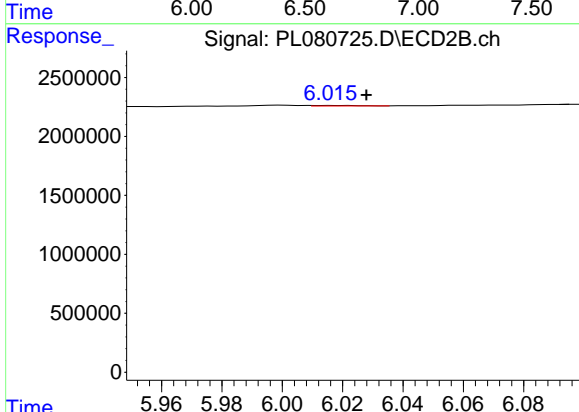
R.T.: 5.954 min
 Delta R.T.: -0.005 min
 Response: 17169
 Conc: 0.01 ng/ml



#18 Endrin aldehyde

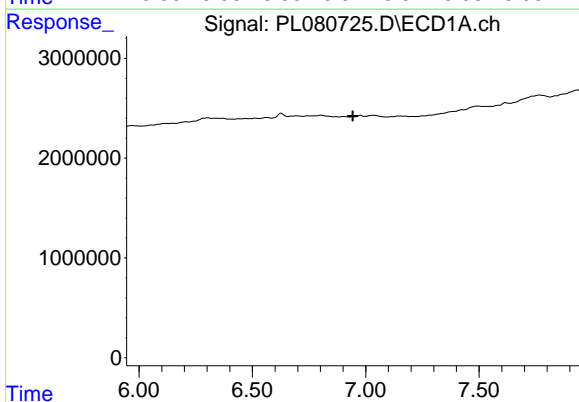
R.T.: 0.000 min
 Exp R.T.: 6.709 min
 Response: 0
 Conc: N.D.

Instrument :
 ECD_L
 ClientSampleId :



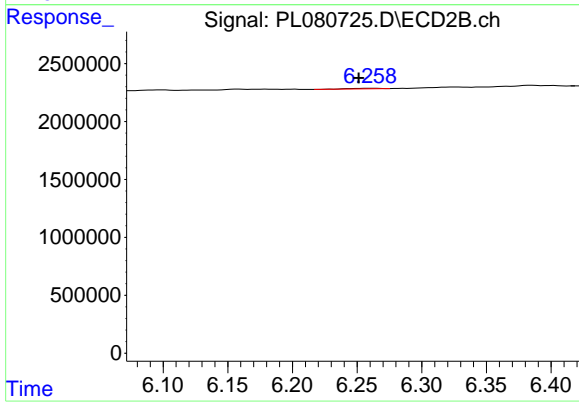
#18 Endrin aldehyde

R.T.: 6.017 min
 Delta R.T.: -0.011 min
 Response: 49696
 Conc: 0.03 ng/ml



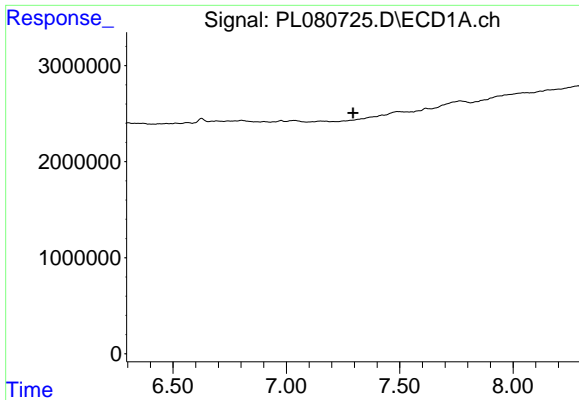
#19 Endosulfan Sulfate

R.T.: 0.000 min
 Exp R.T.: 6.943 min
 Response: 0
 Conc: N.D.



#19 Endosulfan Sulfate

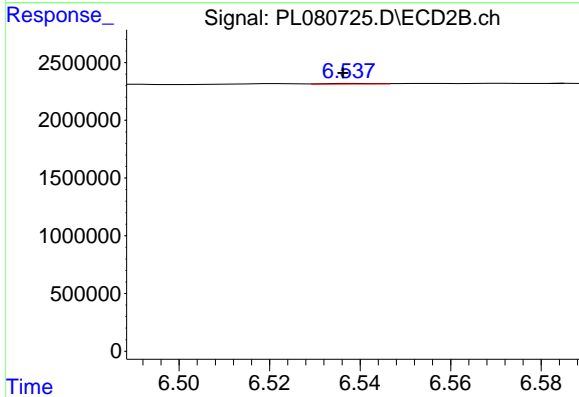
R.T.: 6.259 min
 Delta R.T.: 0.008 min
 Response: 77932
 Conc: 0.03 ng/ml



#20 Methoxychlor

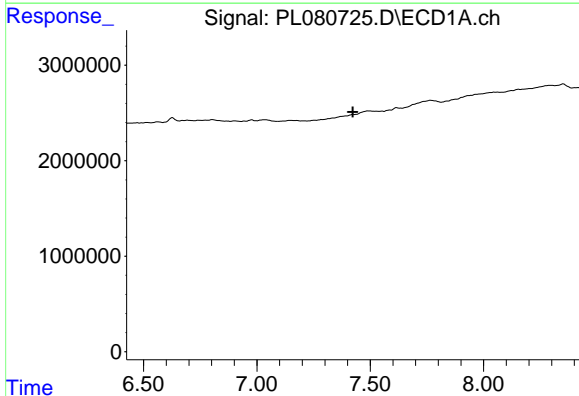
R.T.: 0.000 min
 Exp R.T.: 7.294 min
 Response: 0
 Conc: N.D.

Instrument :
 ECD_L
 ClientSampleId :



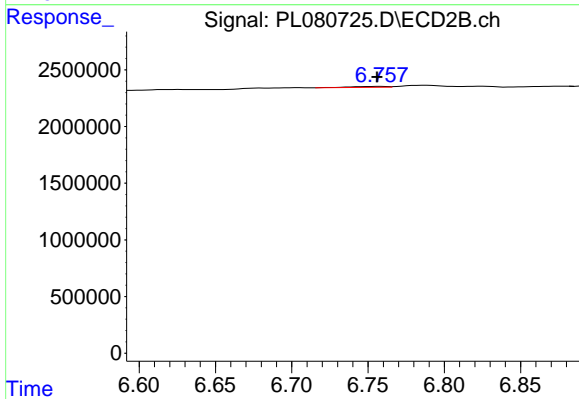
#20 Methoxychlor

R.T.: 6.538 min
 Delta R.T.: 0.002 min
 Response: 41152
 Conc: 0.03 ng/ml



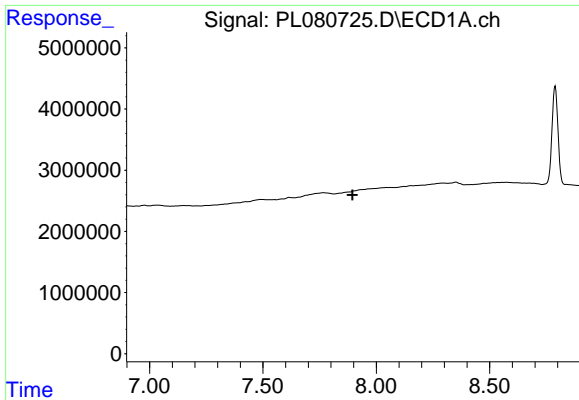
#21 Endrin ketone

R.T.: 7.423 min
 Delta R.T.: 0.000 min
 Response: -308775
 Conc: N.D.



#21 Endrin ketone

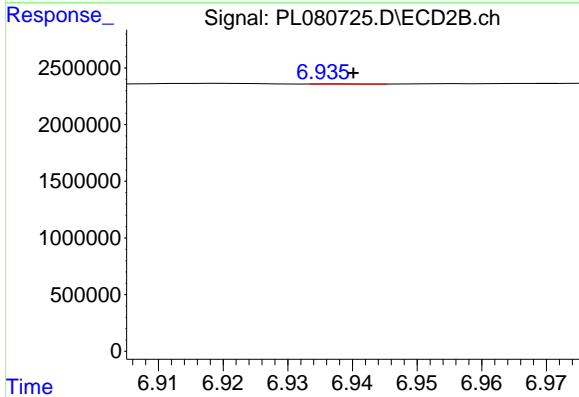
R.T.: 6.759 min
 Delta R.T.: 0.003 min
 Response: 121772
 Conc: 0.05 ng/ml



#22 Mirex

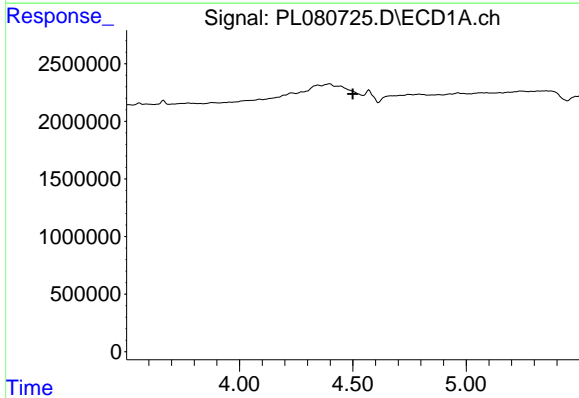
R.T.: 0.000 min
 Exp R.T. : 7.896 min
 Response: 0
 Conc: N.D.

Instrument :
 ECD_L
 ClientSampleId :



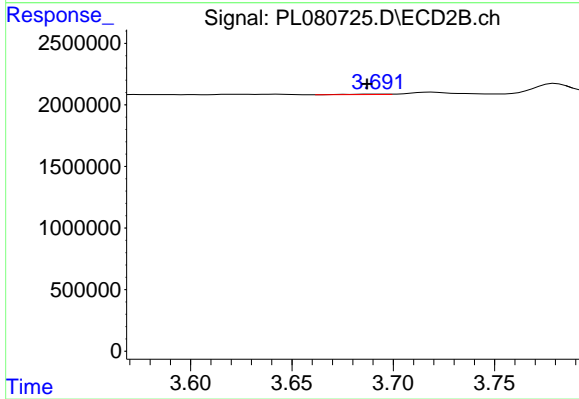
#22 Mirex

R.T.: 6.938 min
 Delta R.T.: -0.002 min
 Response: 4404
 Conc: 0.00 ng/ml



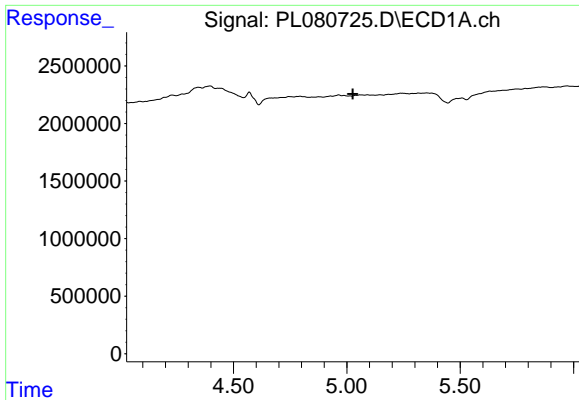
#23 Chlordane-1

R.T.: 0.000 min
 Exp R.T. : 4.500 min
 Response: 0
 Conc: N.D.



#23 Chlordane-1

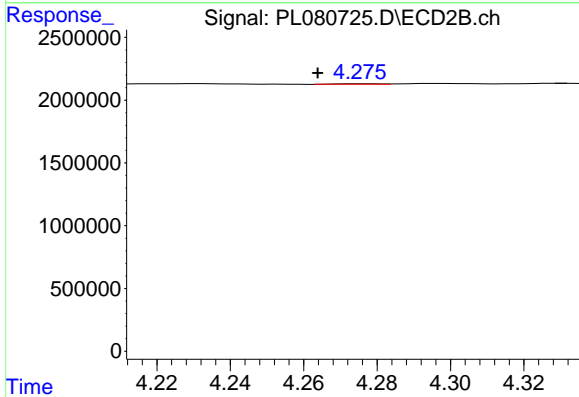
R.T.: 3.693 min
 Delta R.T.: 0.006 min
 Response: 43502
 Conc: 0.53 ng/ml



#24 Chlordane-2

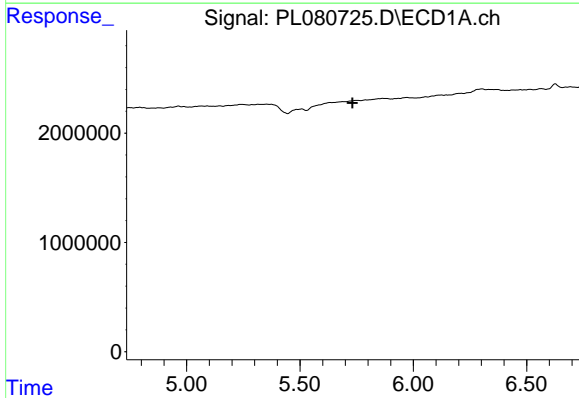
R.T.: 0.000 min
 Exp R.T.: 5.027 min
 Response: 0
 Conc: N.D.

Instrument :
 ECD_L
 ClientSampleId :



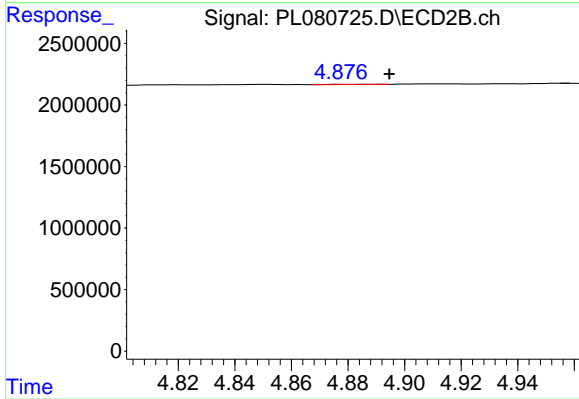
#24 Chlordane-2

R.T.: 4.276 min
 Delta R.T.: 0.012 min
 Response: 29331
 Conc: 0.33 ng/ml



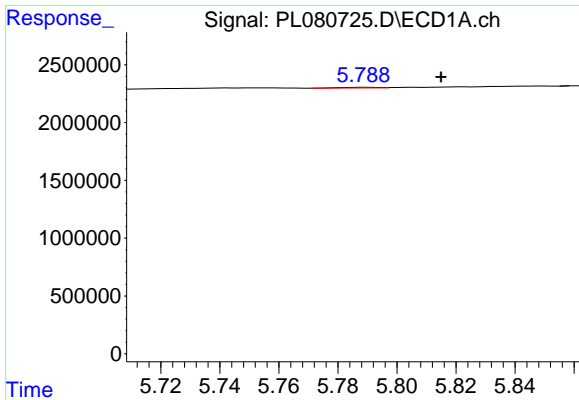
#25 Chlordane-3

R.T.: 0.000 min
 Exp R.T.: 5.732 min
 Response: 0
 Conc: N.D.



#25 Chlordane-3

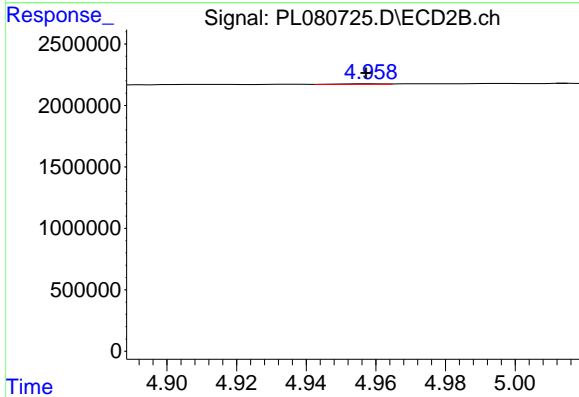
R.T.: 4.878 min
 Delta R.T.: -0.016 min
 Response: 17200
 Conc: 0.07 ng/ml



#26 Chlordane-4

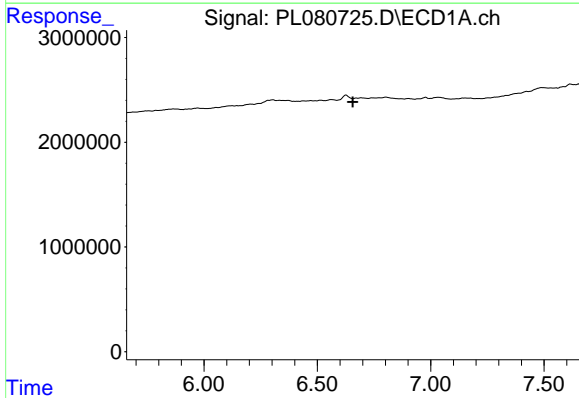
R.T.: 5.789 min
 Delta R.T.: -0.026 min
 Response: 57107
 Conc: 0.13 ng/ml

Instrument :
 ECD_L
 ClientSampleId :



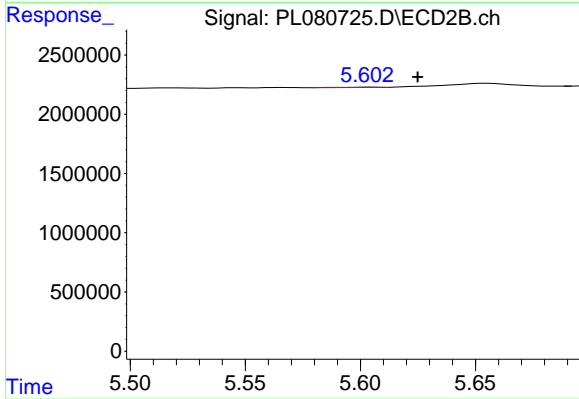
#26 Chlordane-4

R.T.: 4.959 min
 Delta R.T.: 0.002 min
 Response: 45289
 Conc: 0.17 ng/ml



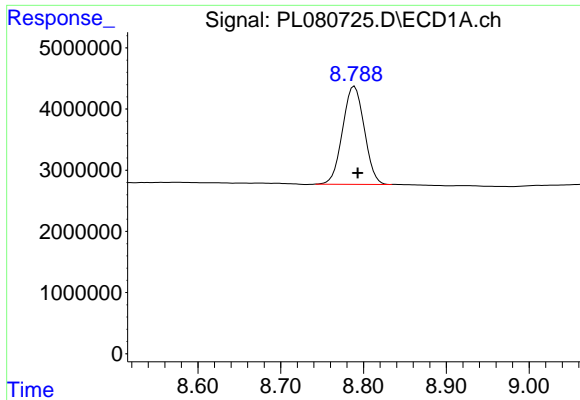
#27 Chlordane-5

R.T.: 0.000 min
 Exp R.T. : 6.656 min
 Response: 0
 Conc: N.D.



#27 Chlordane-5

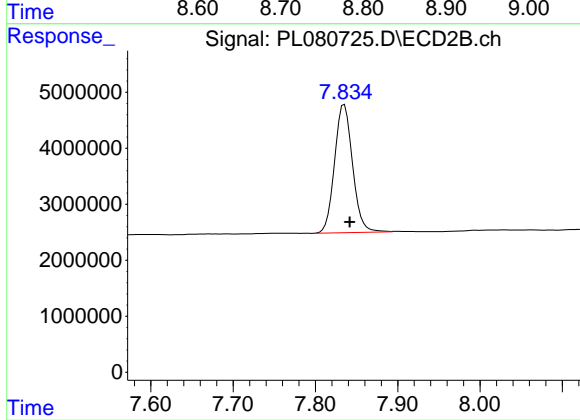
R.T.: 5.605 min
 Delta R.T.: -0.020 min
 Response: 35860
 Conc: 0.50 ng/ml



#28 Decachlorobiphenyl

R.T.: 8.789 min
Delta R.T.: -0.004 min
Response: 29180243
Conc: 16.67 ng/ml

Instrument :
ECD_L
ClientSampleId :



#28 Decachlorobiphenyl

R.T.: 7.835 min
Delta R.T.: -0.007 min
Response: 34727152
Conc: 14.58 ng/ml