

Data Path : Z:\pestpcbsrv\HPCHEM1\ECD_L\Data\PL020325\
 Data File : PL093981.D
 Signal(s) : Signal #1: ECD1A.ch Signal #2: ECD2B.ch
 Acq On : 03 Feb 2025 11:03
 Operator : AR\AJ
 Sample : PEM
 Misc :
 ALS Vial : 3 Sample Multiplier: 1

Instrument :
 ECD_L
 ClientSampleId :
 PEM

Integration File signal 1: autoint1.e
 Integration File signal 2: autoint2.e
 Quant Time: Feb 04 00:39:16 2025
 Quant Method : Z:\pestpcbsrv\HPCHEM1\ECD_L\methods\PL012125.M
 Quant Title : GC Extractables
 QLast Update : Tue Jan 21 14:58:05 2025
 Response via : Initial Calibration
 Integrator: ChemStation

Volume Inj. : 1 µl
 Signal #1 Phase : ZB-MR2 Signal #2 Phase: ZB-MR2
 Signal #1 Info : 30M x 0.32mm x0.5 Signal #2 Info : 30M x 0.32mm x0.25µm

Compound	RT#1	RT#2	Resp#1	Resp#2	ng/ml	ng/ml

System Monitoring Compounds						
1) SA Tetrachlo...	3.540	2.775	50258420	59042017	18.664	18.088
28) SA Decachlor...	9.056	7.911	30344810	50824880	14.506	14.505
Target Compounds						
2) A alpha-BHC	3.996	3.277	36276564	42871531	9.462	8.769
3) MA gamma-BHC...	4.329	3.607	33523363	36301716	9.103	7.657
5) MB Aldrin	0.000	4.244f	0	179274	N.D.	0.039 #
6) B beta-BHC	4.527	3.908	14583143	19144363	9.073	9.584
7) B delta-BHC	0.000	4.137	0	177406	N.D.	0.037 #
8) B Heptachlo...	0.000	4.736	0	178778	N.D.	0.043 #
9) A Endosulfan I	6.094f	5.072f	4003735	1115229	1.515	0.288 #
11) B alpha-Chl...	0.000	5.016f	0	6320917	N.D.	1.510 #
12) B 4,4'-DDE	0.000	5.231	0	704454	N.D.	0.176 #
13) MA Dieldrin	0.000	5.382f	0	699572	N.D.	0.163 #
14) MA Endrin	6.575	5.638	90815434	137.9E6	38.730	37.352
16) A 4,4'-DDD	0.000	5.786	0	5129313	N.D.	1.625 #
17) MA 4,4'-DDT	7.025	6.035	158.9E6	288.4E6	80.586	88.623
18) B Endrin al...	6.925	6.110	2748230	3259226	1.414	1.070
20) A Methoxychlor	7.502	6.610	204.2E6	372.3E6	195.735	208.198
21) B Endrin ke...	7.645	6.839	4791619	14104030	1.899	3.362 #
24) Chlordane-2	0.000	4.324f	0	1599329	N.D.	10.900 #
26) Chlordane-4	0.000	5.016f	0	6320917	N.D.	14.919 #

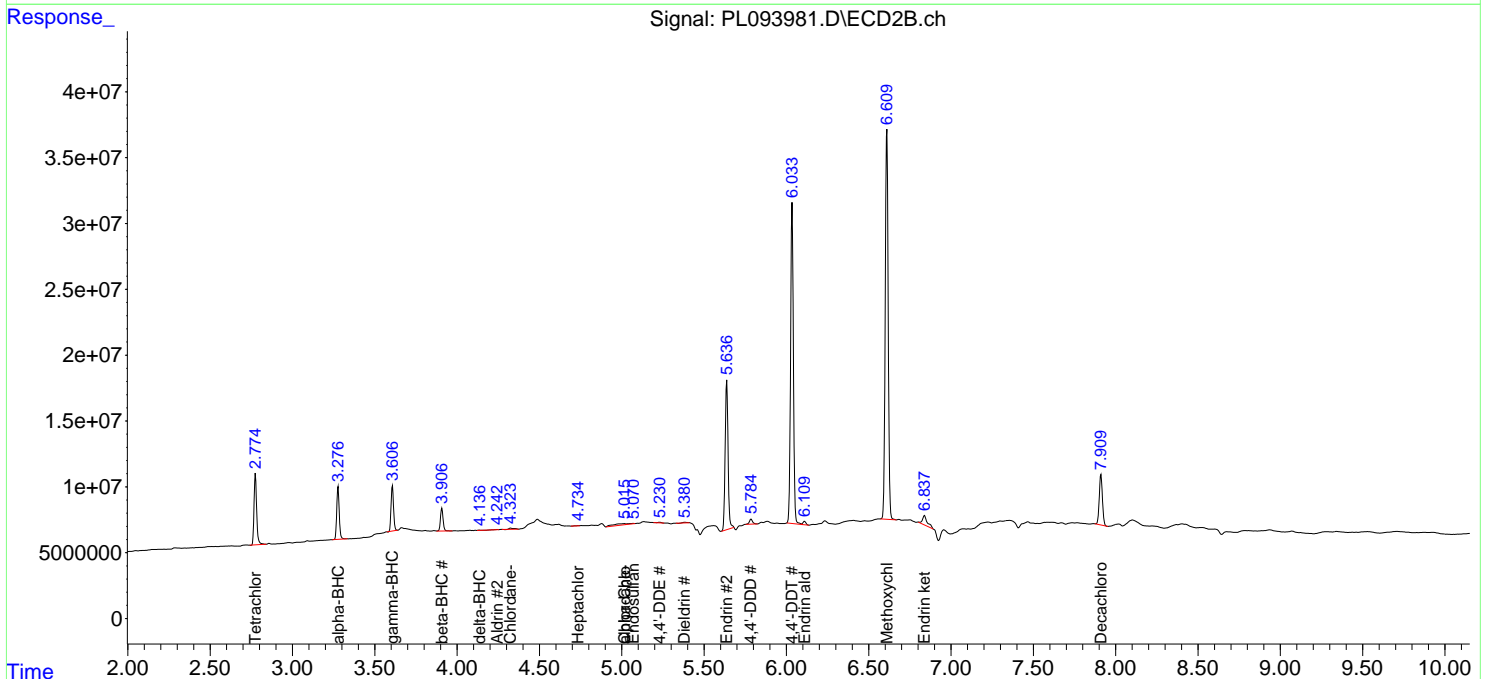
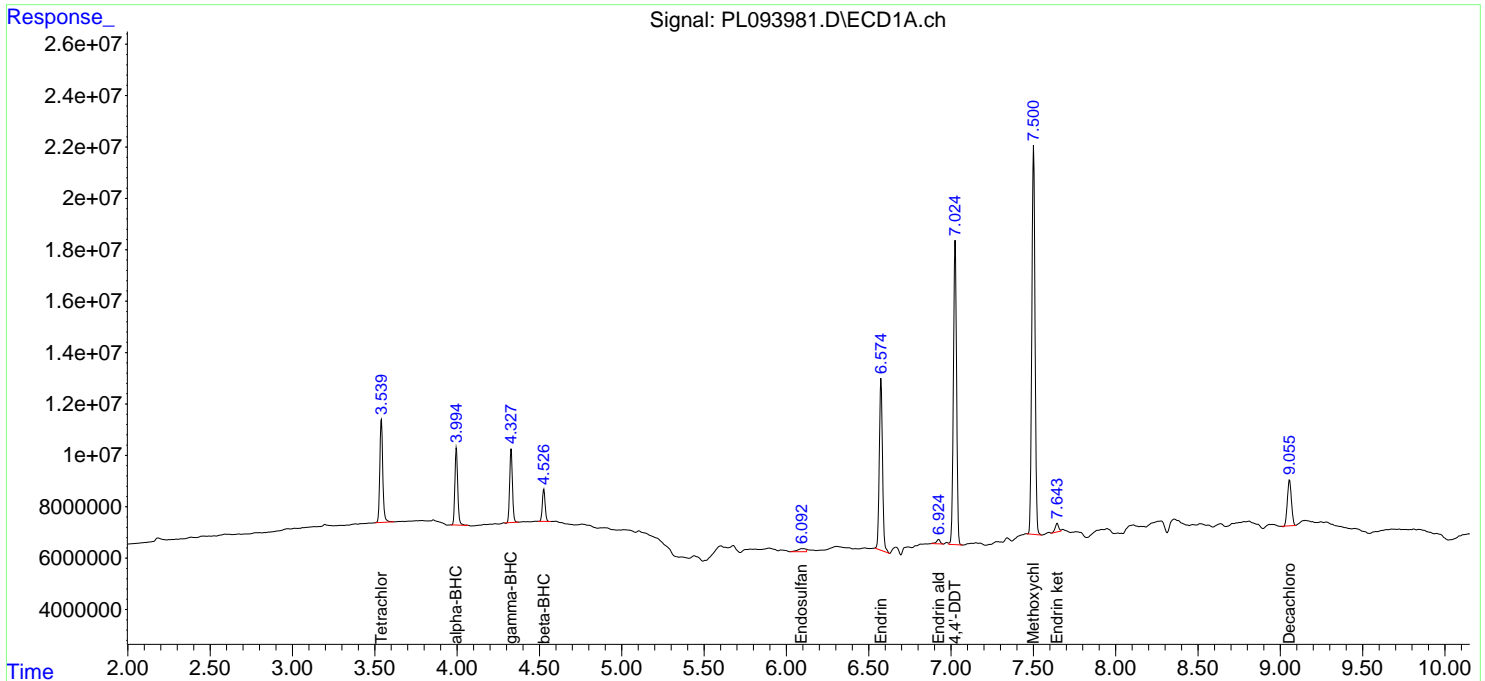
(f)=RT Delta > 1/2 Window (#)=Amounts differ by > 25% (m)=manual int.

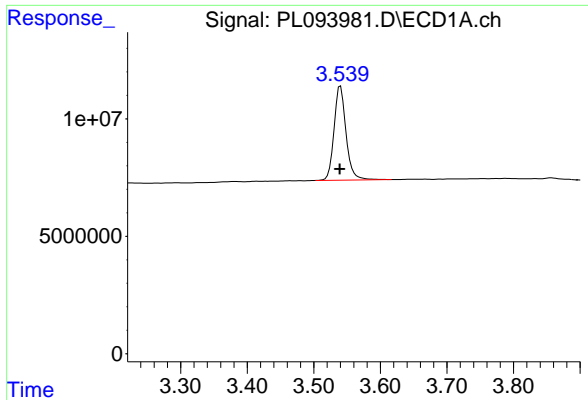
Data Path : Z:\pestpcbsrv\HPCHEM1\ECD_L\Data\PL020325\
 Data File : PL093981.D
 Signal(s) : Signal #1: ECD1A.ch Signal #2: ECD2B.ch
 Acq On : 03 Feb 2025 11:03
 Operator : AR\AJ
 Sample : PEM
 Misc :
 ALS Vial : 3 Sample Multiplier: 1

Instrument :
 ECD_L
 ClientSampleId :
 PEM

Integration File signal 1: autoint1.e
 Integration File signal 2: autoint2.e
 Quant Time: Feb 04 00:39:16 2025
 Quant Method : Z:\pestpcbsrv\HPCHEM1\ECD_L\methods\PL012125.M
 Quant Title : GC Extractables
 QLast Update : Tue Jan 21 14:58:05 2025
 Response via : Initial Calibration
 Integrator: ChemStation

Volume Inj. : 1 µl
 Signal #1 Phase : ZB-MR1 Signal #2 Phase: ZB-MR2
 Signal #1 Info : 30M x 0.32mm x0.5 Signal #2 Info : 30M x 0.32mm x0.25µm

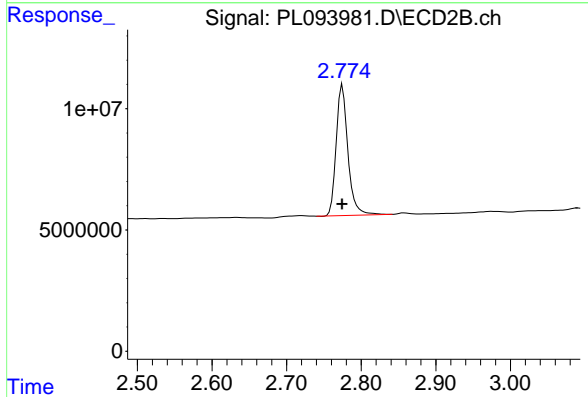




#1 Tetrachloro-m-xylene

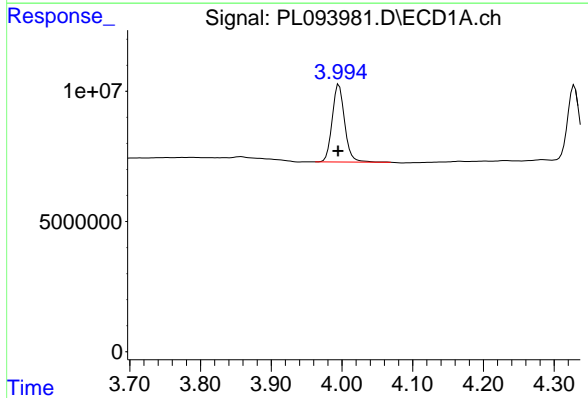
R.T.: 3.540 min
 Delta R.T.: 0.001 min
 Response: 50258420
 Conc: 18.66 ng/ml

Instrument :
 ECD_L
 ClientSampleId :
 PEM



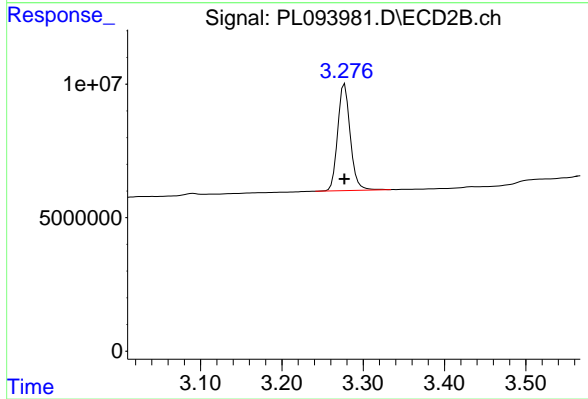
#1 Tetrachloro-m-xylene

R.T.: 2.775 min
 Delta R.T.: 0.000 min
 Response: 59042017
 Conc: 18.09 ng/ml



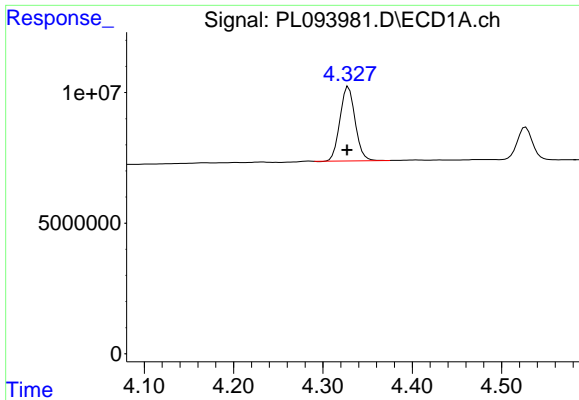
#2 alpha-BHC

R.T.: 3.996 min
 Delta R.T.: 0.001 min
 Response: 36276564
 Conc: 9.46 ng/ml



#2 alpha-BHC

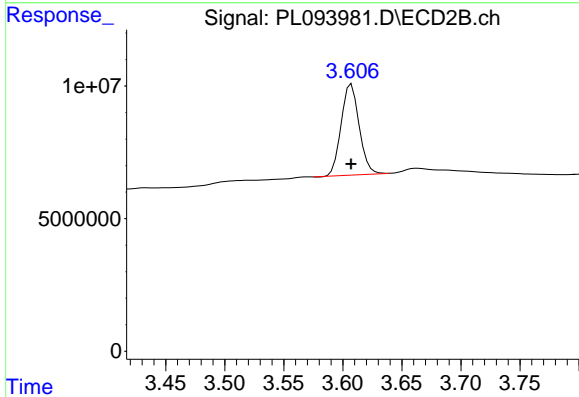
R.T.: 3.277 min
 Delta R.T.: 0.000 min
 Response: 42871531
 Conc: 8.77 ng/ml



#3 gamma-BHC (Lindane)

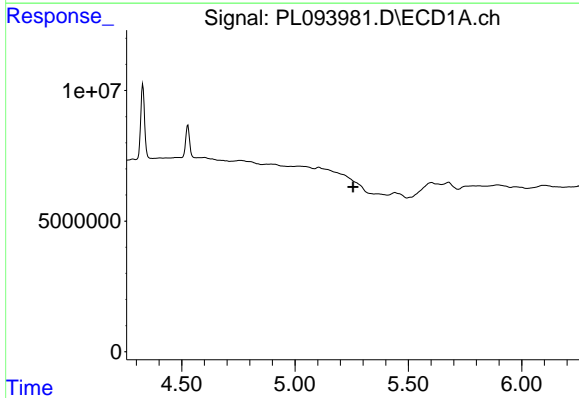
R.T.: 4.329 min
 Delta R.T.: 0.002 min
 Response: 33523363
 Conc: 9.10 ng/ml

Instrument :
 ECD_L
 ClientSampleId :
 PEM



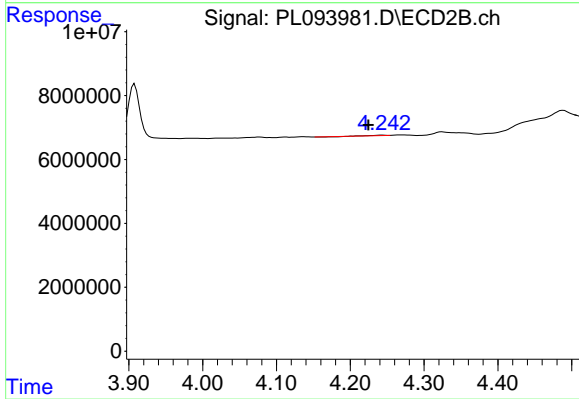
#3 gamma-BHC (Lindane)

R.T.: 3.607 min
 Delta R.T.: 0.000 min
 Response: 36301716
 Conc: 7.66 ng/ml



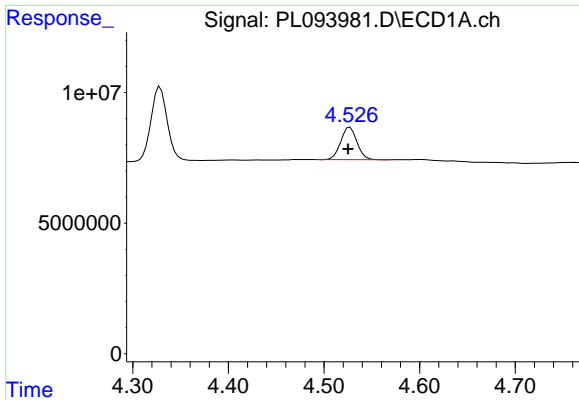
#5 Aldrin

R.T.: 0.000 min
 Exp R.T. : 5.256 min
 Response: 0
 Conc: N.D.



#5 Aldrin

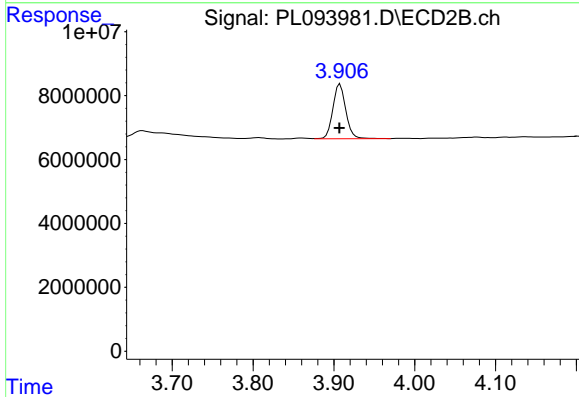
R.T.: 4.244 min
 Delta R.T.: 0.019 min
 Response: 179274
 Conc: 0.04 ng/ml



#6 beta-BHC

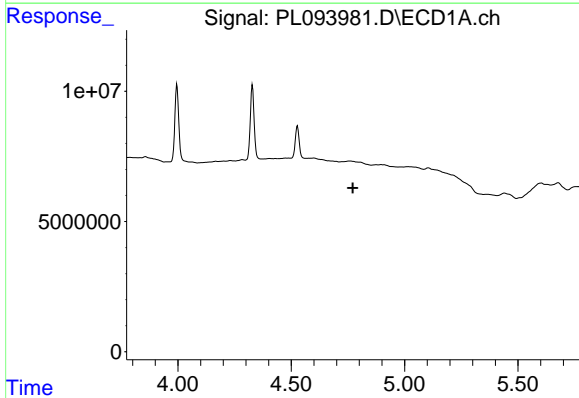
R.T.: 4.527 min
 Delta R.T.: 0.002 min
 Response: 14583143
 Conc: 9.07 ng/ml

Instrument :
 ECD_L
 ClientSampleId :
 PEM



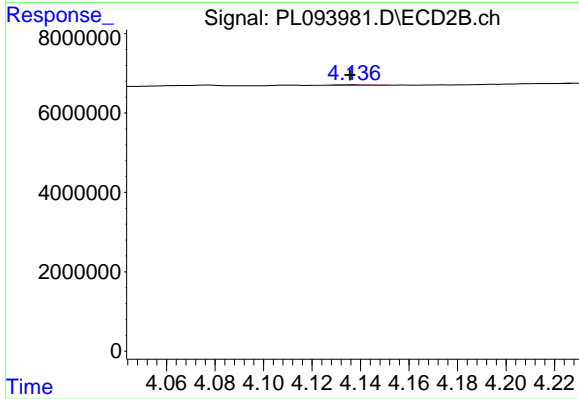
#6 beta-BHC

R.T.: 3.908 min
 Delta R.T.: 0.000 min
 Response: 19144363
 Conc: 9.58 ng/ml



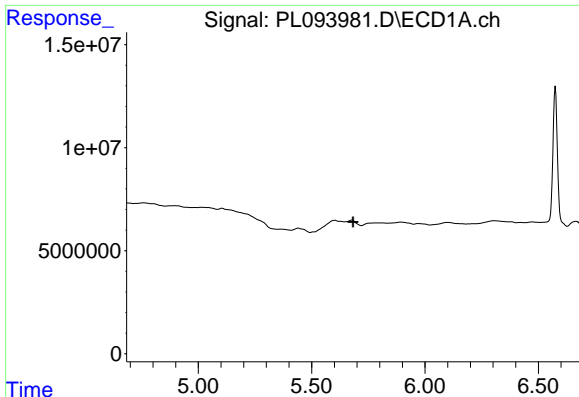
#7 delta-BHC

R.T.: 0.000 min
 Exp R.T. : 4.772 min
 Response: 0
 Conc: N.D.



#7 delta-BHC

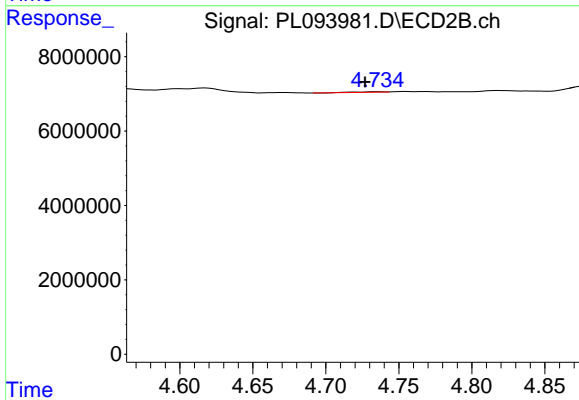
R.T.: 4.137 min
 Delta R.T.: 0.001 min
 Response: 177406
 Conc: 0.04 ng/ml



#8 Heptachlor epoxide

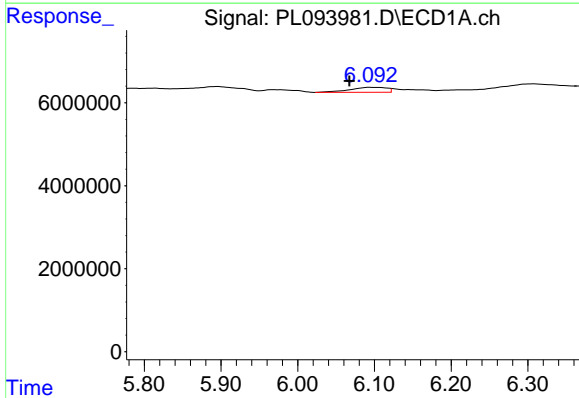
R.T.: 0.000 min
 Exp R.T.: 5.682 min
 Response: 0
 Conc: N.D.

Instrument :
 ECD_L
 ClientSampleId :
 PEM



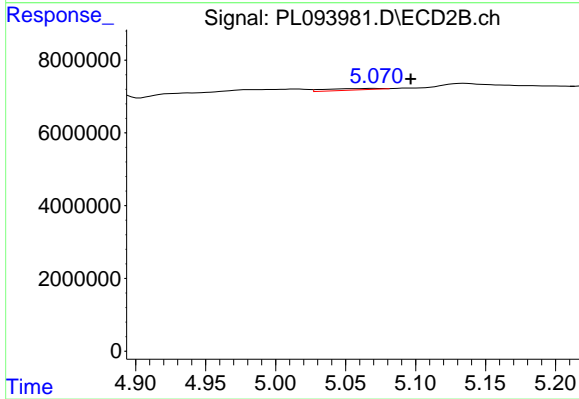
#8 Heptachlor epoxide

R.T.: 4.736 min
 Delta R.T.: 0.009 min
 Response: 178778
 Conc: 0.04 ng/ml



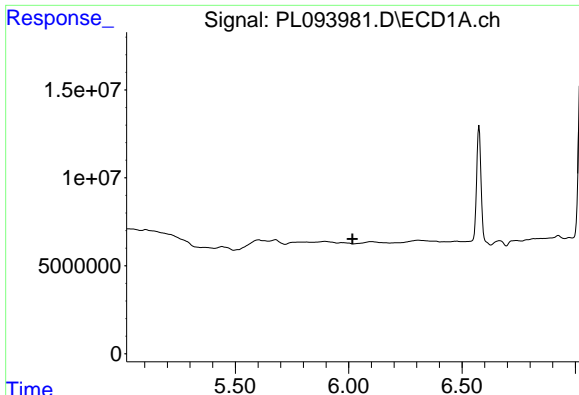
#9 Endosulfan I

R.T.: 6.094 min
 Delta R.T.: 0.027 min
 Response: 4003735
 Conc: 1.51 ng/ml



#9 Endosulfan I

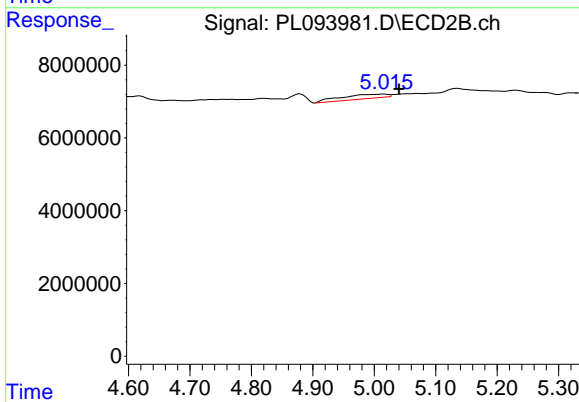
R.T.: 5.072 min
 Delta R.T.: -0.025 min
 Response: 1115229
 Conc: 0.29 ng/ml



#11 alpha-Chlordane

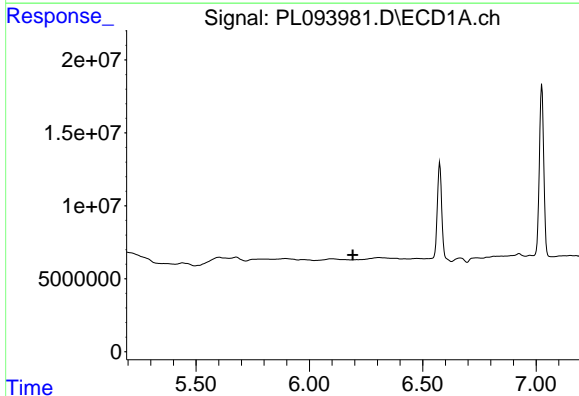
R.T.: 0.000 min
 Exp R.T. : 6.017 min
 Response: 0
 Conc: N.D.

Instrument :
 ECD_L
 ClientSampleId :
 PEM



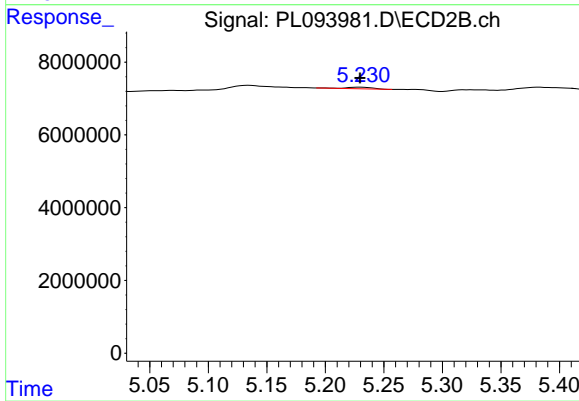
#11 alpha-Chlordane

R.T.: 5.016 min
 Delta R.T.: -0.025 min
 Response: 6320917
 Conc: 1.51 ng/ml



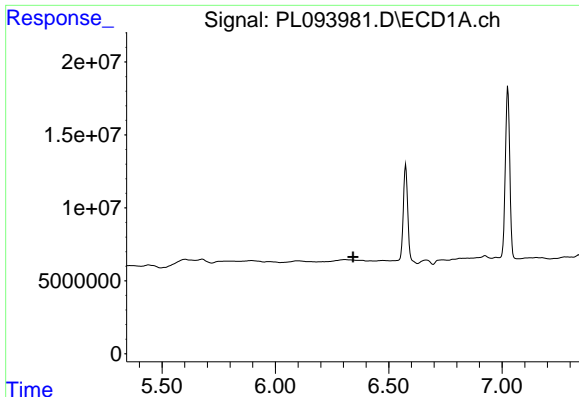
#12 4,4'-DDE

R.T.: 0.000 min
 Exp R.T. : 6.191 min
 Response: 0
 Conc: N.D.



#12 4,4'-DDE

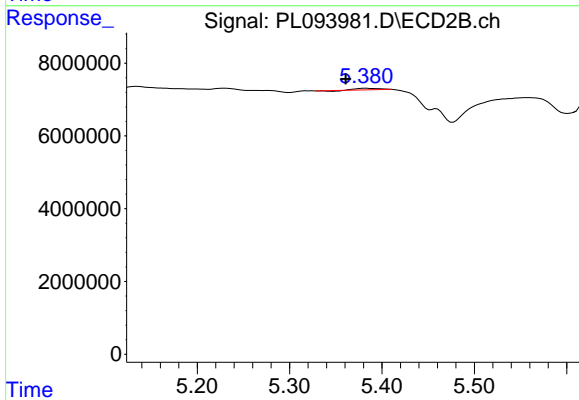
R.T.: 5.231 min
 Delta R.T.: 0.000 min
 Response: 704454
 Conc: 0.18 ng/ml



#13 Dieldrin

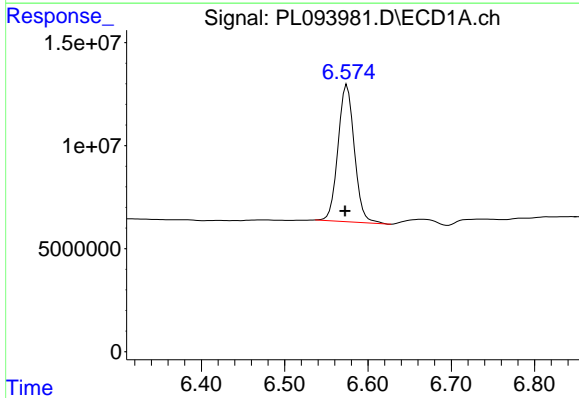
R.T.: 0.000 min
 Exp R.T.: 6.343 min
 Response: 0
 Conc: N.D.

Instrument :
 ECD_L
 ClientSampleId :
 PEM



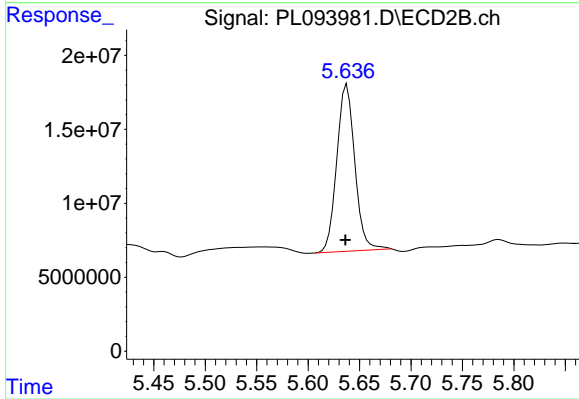
#13 Dieldrin

R.T.: 5.382 min
 Delta R.T.: 0.021 min
 Response: 699572
 Conc: 0.16 ng/ml



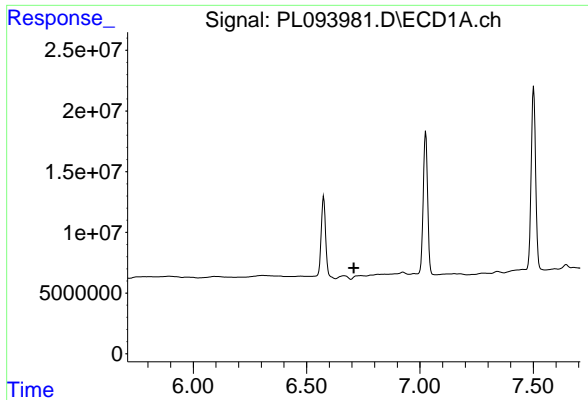
#14 Endrin

R.T.: 6.575 min
 Delta R.T.: 0.003 min
 Response: 90815434
 Conc: 38.73 ng/ml



#14 Endrin

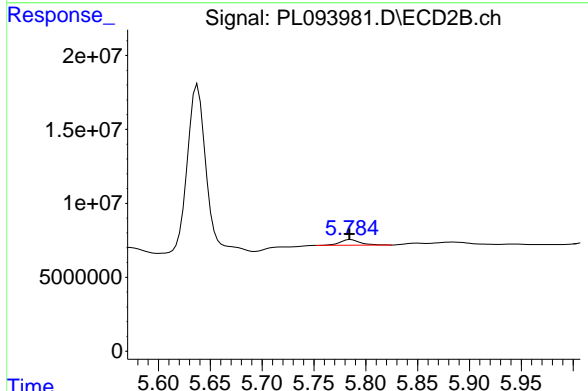
R.T.: 5.638 min
 Delta R.T.: 0.001 min
 Response: 137927416
 Conc: 37.35 ng/ml



#16 4,4'-DDD

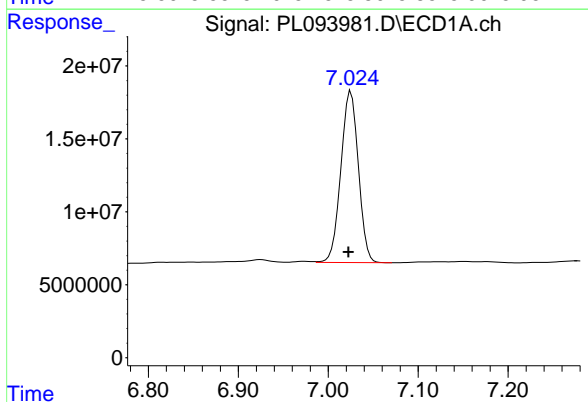
R.T.: 0.000 min
 Exp R.T.: 6.708 min
 Response: 0
 Conc: N.D.

Instrument :
 ECD_L
 ClientSampleId :
 PEM



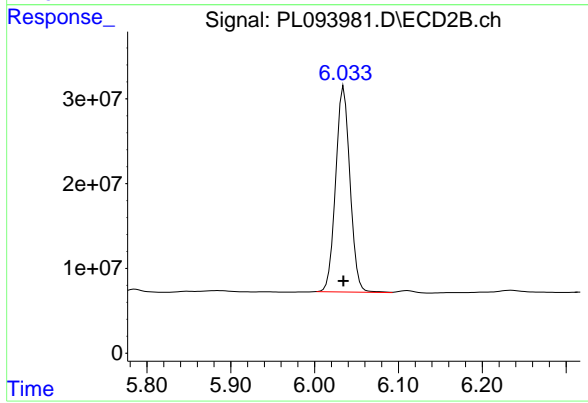
#16 4,4'-DDD

R.T.: 5.786 min
 Delta R.T.: 0.001 min
 Response: 5129313
 Conc: 1.62 ng/ml



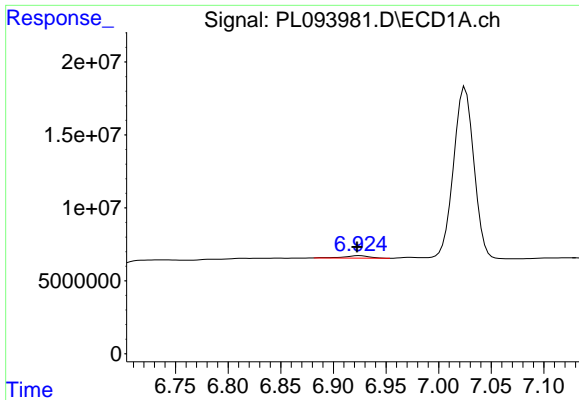
#17 4,4'-DDT

R.T.: 7.025 min
 Delta R.T.: 0.003 min
 Response: 158920914
 Conc: 80.59 ng/ml



#17 4,4'-DDT

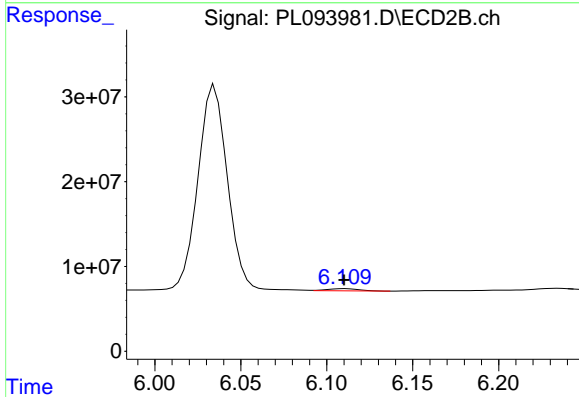
R.T.: 6.035 min
 Delta R.T.: 0.000 min
 Response: 288383133
 Conc: 88.62 ng/ml



#18 Endrin aldehyde

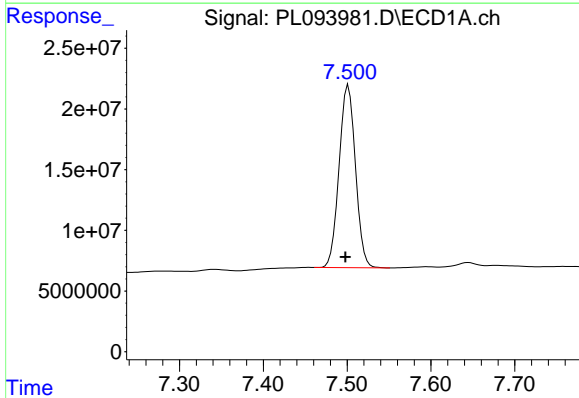
R.T.: 6.925 min
 Delta R.T.: 0.002 min
 Response: 2748230
 Conc: 1.41 ng/ml

Instrument :
 ECD_L
 ClientSampleId :
 PEM



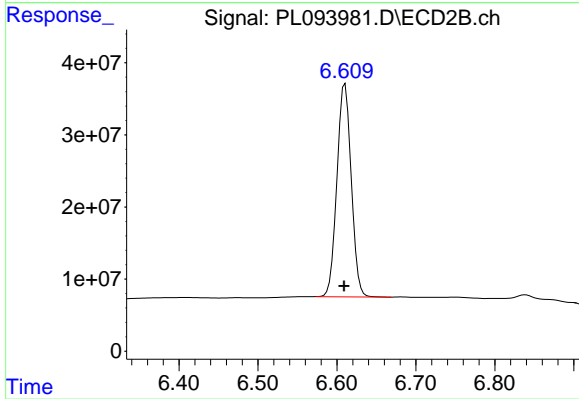
#18 Endrin aldehyde

R.T.: 6.110 min
 Delta R.T.: 0.000 min
 Response: 3259226
 Conc: 1.07 ng/ml



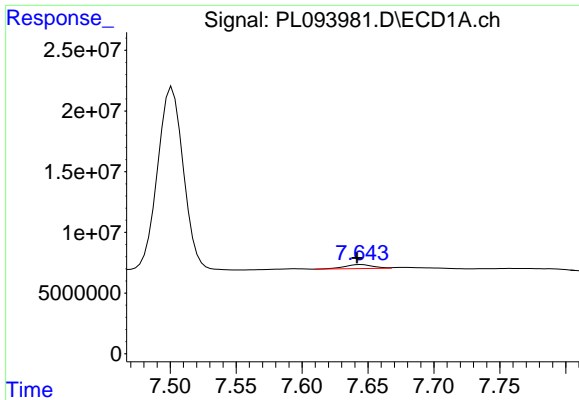
#20 Methoxychlor

R.T.: 7.502 min
 Delta R.T.: 0.004 min
 Response: 204229502
 Conc: 195.74 ng/ml



#20 Methoxychlor

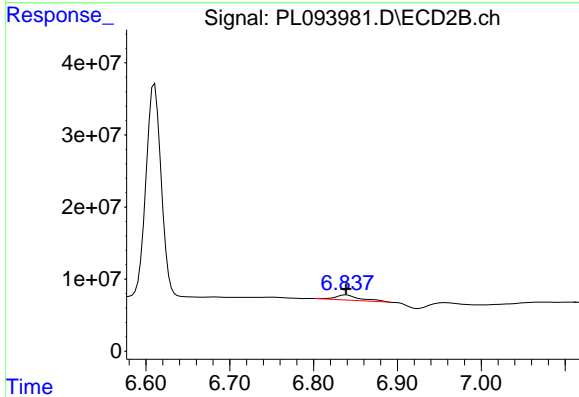
R.T.: 6.610 min
 Delta R.T.: 0.001 min
 Response: 372286643
 Conc: 208.20 ng/ml



#21 Endrin ketone

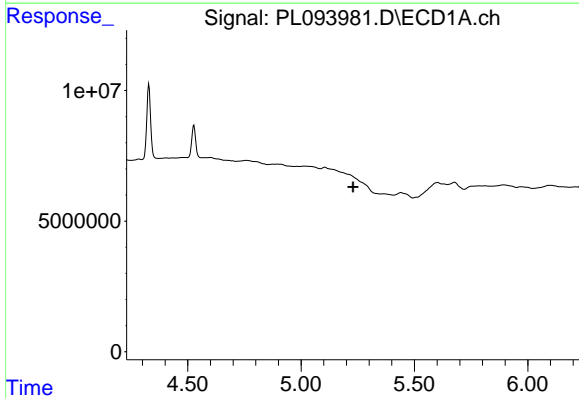
R.T.: 7.645 min
 Delta R.T.: 0.003 min
 Response: 4791619
 Conc: 1.90 ng/ml

Instrument :
 ECD_L
 ClientSampleId :
 PEM



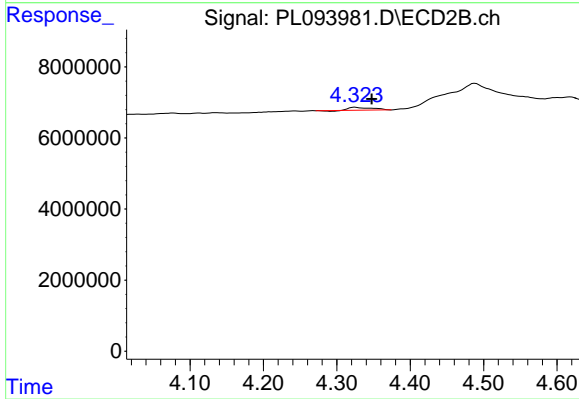
#21 Endrin ketone

R.T.: 6.839 min
 Delta R.T.: 0.000 min
 Response: 14104030
 Conc: 3.36 ng/ml



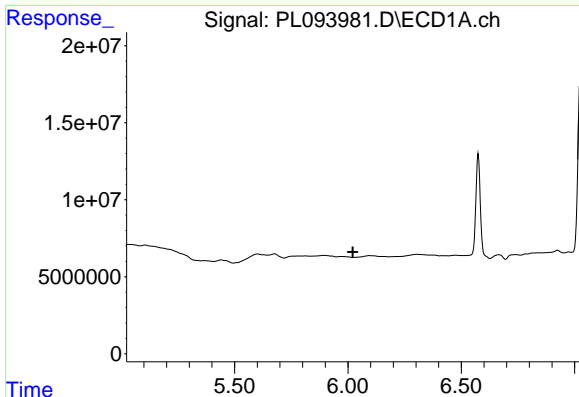
#24 Chlordane-2

R.T.: 0.000 min
 Exp R.T. : 5.229 min
 Response: 0
 Conc: N.D.



#24 Chlordane-2

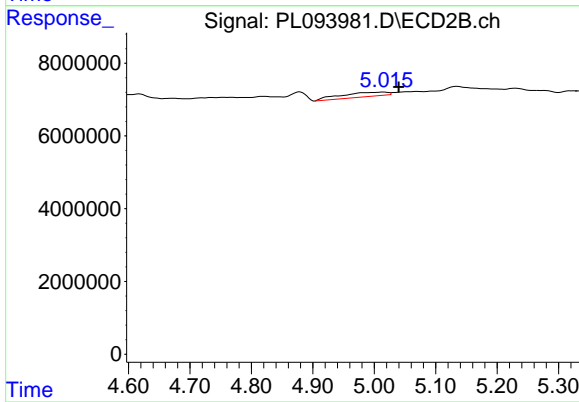
R.T.: 4.324 min
 Delta R.T.: -0.023 min
 Response: 1599329
 Conc: 10.90 ng/ml



#26 Chlordane-4

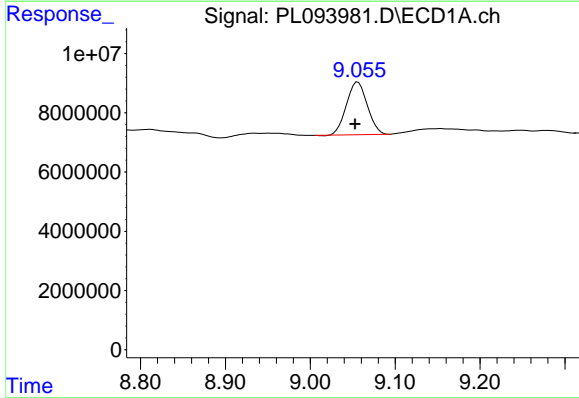
R.T.: 0.000 min
 Exp R.T.: 6.021 min
 Response: 0
 Conc: N.D.

Instrument :
 ECD_L
 ClientSampleId :
 PEM



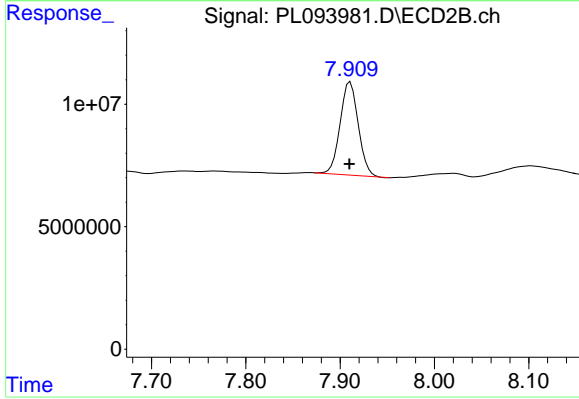
#26 Chlordane-4

R.T.: 5.016 min
 Delta R.T.: -0.024 min
 Response: 6320917
 Conc: 14.92 ng/ml



#28 Decachlorobiphenyl

R.T.: 9.056 min
 Delta R.T.: 0.003 min
 Response: 30344810
 Conc: 14.51 ng/ml



#28 Decachlorobiphenyl

R.T.: 7.911 min
 Delta R.T.: 0.000 min
 Response: 50824880
 Conc: 14.50 ng/ml