

Data Path : Z:\pestpcbsrv\HPCHEM1\ECD_L\Data\PL020325\
 Data File : PL094021.D
 Signal(s) : Signal #1: ECD1A.ch Signal #2: ECD2B.ch
 Acq On : 03 Feb 2025 22:15
 Operator : AR\AJ
 Sample : PEM
 Misc :
 ALS Vial : 3 Sample Multiplier: 1

Instrument :
 ECD_L
 ClientSampleId :
 PEM

Integration File signal 1: autoint1.e
 Integration File signal 2: autoint2.e
 Quant Time: Feb 04 00:53:43 2025
 Quant Method : Z:\pestpcbsrv\HPCHEM1\ECD_L\methods\PL012125.M
 Quant Title : GC Extractables
 QLast Update : Tue Jan 21 14:58:05 2025
 Response via : Initial Calibration
 Integrator: ChemStation

Volume Inj. : 1 µl
 Signal #1 Phase : ZB-MR2 Signal #2 Phase: ZB-MR2
 Signal #1 Info : 30M x 0.32mm x0.5 Signal #2 Info : 30M x 0.32mm x0.25µm

Compound	RT#1	RT#2	Resp#1	Resp#2	ng/ml	ng/ml
System Monitoring Compounds						
1) SA Tetrachlo...	3.538	2.774	58293426	68352003	21.648	20.940
28) SA Decachlor...	9.055	7.911	43477269	77133192	20.783	22.012
Target Compounds						
2) A alpha-BHC	3.994	3.276	43573159	49127522	11.365	10.049
3) MA gamma-BHC...	4.326	3.606	40794064	45571882	11.077	9.612
4) MA Heptachlor	0.000	3.966f	0	96017	N.D.	0.021 #
5) MB Aldrin	0.000	4.239	0	247606	N.D.	0.054 #
6) B beta-BHC	4.525	3.906	19098949	22940294	11.882	11.485
7) B delta-BHC	0.000	4.138	0	258892	N.D.	0.054 #
8) B Heptachlo...	0.000	4.730	0	24884	N.D.	0.006 #
9) A Endosulfan I	0.000	5.085	0	151650	N.D.	0.039 #
10) B gamma-Chl...	0.000	4.988	0	3687655	N.D.	0.870 #
11) B alpha-Chl...	0.000	5.038	0	743908	N.D.	0.178 #
12) B 4,4'-DDE	0.000	5.229	0	731162	N.D.	0.182 #
13) MA Dieldrin	0.000	5.372	0	247155	N.D.	0.058 #
14) MA Endrin	6.574	5.637	114.2E6	188.9E6	48.716	51.162
15) B Endosulfa...	6.810f	5.945	3255855	825846	1.351	0.223 #
16) A 4,4'-DDD	6.710	5.785	8143003	9521463	4.285	3.016 #
17) MA 4,4'-DDT	7.024	6.035	203.7E6	385.6E6	103.315	118.504
18) B Endrin al...	6.924	6.110	3301688	6560657	1.698	2.155 #
19) B Endosulfa...	0.000	6.324	0	71214	N.D.	0.020 #
20) A Methoxychlor	7.501	6.610	256.3E6	477.3E6	245.597	266.907
21) B Endrin ke...	7.643	6.839	7006909	12039396	2.778	2.870
24) Chlordane-2	0.000	4.357	0	78825	N.D.	0.537 #
25) Chlordane-3	0.000	4.988	0	3687655	N.D.	8.481 #
26) Chlordane-4	0.000	5.038	0	743908	N.D.	1.756 #
27) Chlordane-5	0.000	5.945	0	825846	N.D.	5.392 #

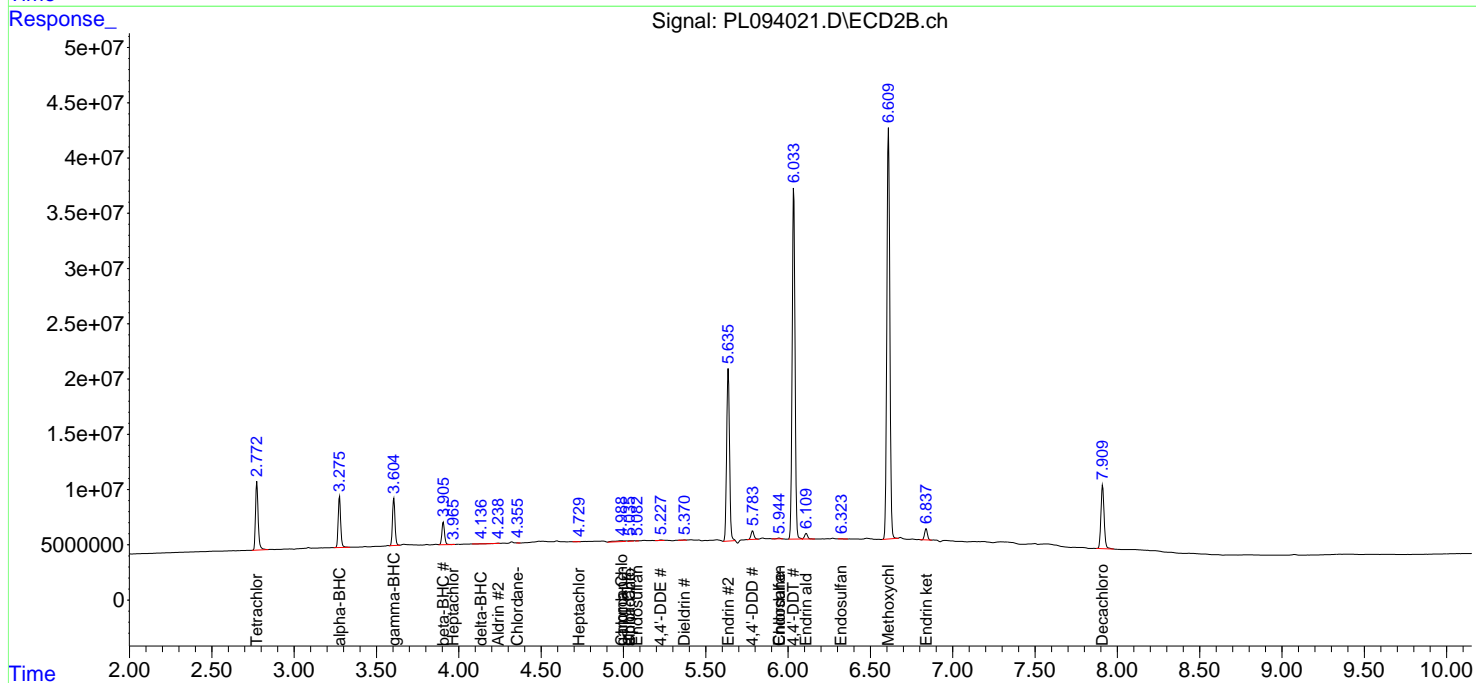
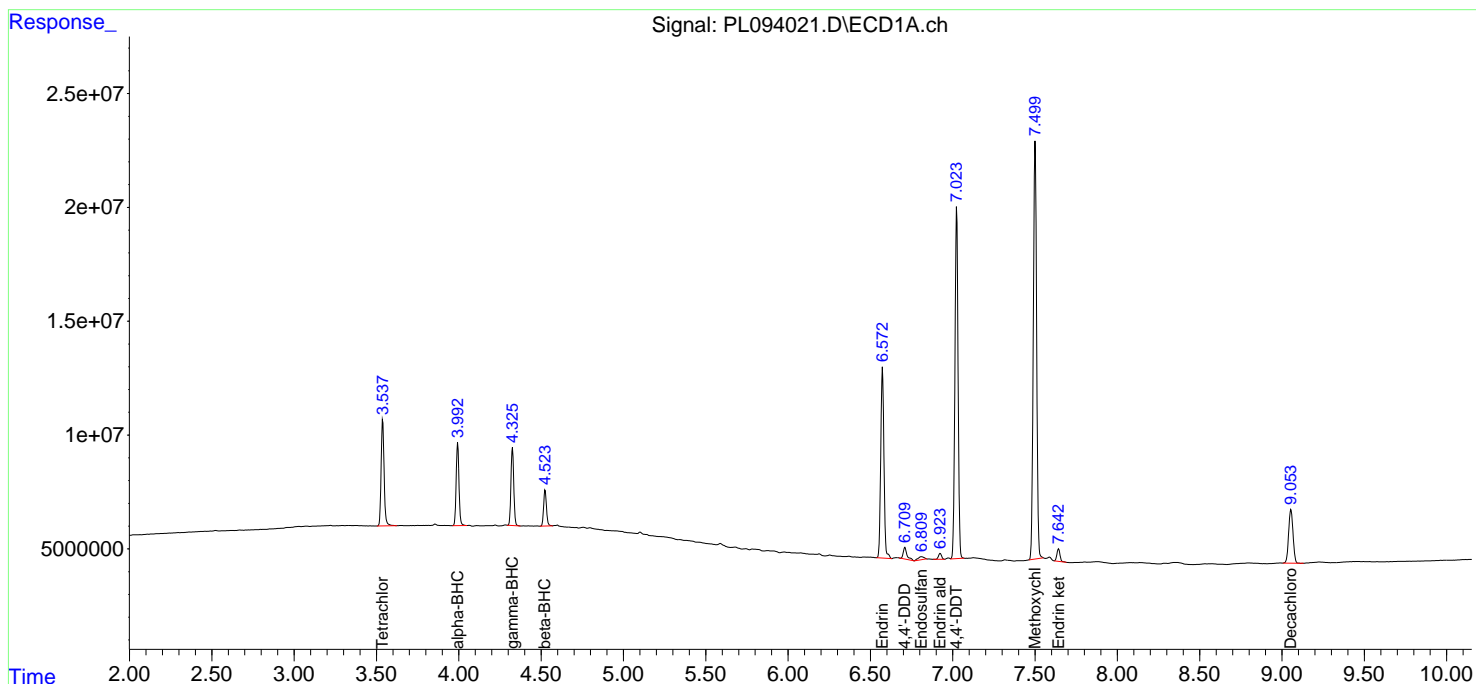
(f)=RT Delta > 1/2 Window (#)=Amounts differ by > 25% (m)=manual int.

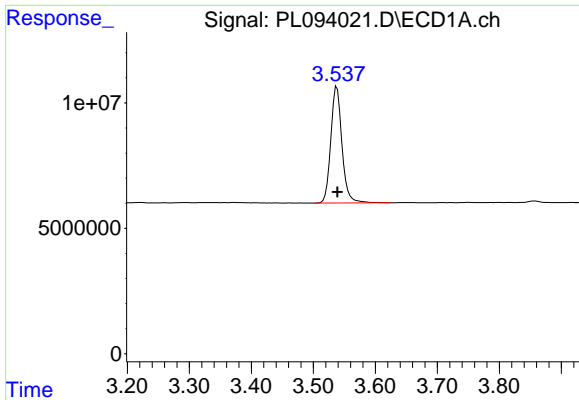
Data Path : Z:\pestpcbsrv\HPCHEM1\ECD_L\Data\PL020325\
 Data File : PL094021.D
 Signal(s) : Signal #1: ECD1A.ch Signal #2: ECD2B.ch
 Acq On : 03 Feb 2025 22:15
 Operator : AR\AJ
 Sample : PEM
 Misc :
 ALS Vial : 3 Sample Multiplier: 1

Instrument :
 ECD_L
 ClientSampleId :
 PEM

Integration File signal 1: autoint1.e
 Integration File signal 2: autoint2.e
 Quant Time: Feb 04 00:53:43 2025
 Quant Method : Z:\pestpcbsrv\HPCHEM1\ECD_L\methods\PL012125.M
 Quant Title : GC Extractables
 QLast Update : Tue Jan 21 14:58:05 2025
 Response via : Initial Calibration
 Integrator: ChemStation

Volume Inj. : 1 µl
 Signal #1 Phase : ZB-MR1 Signal #2 Phase: ZB-MR2
 Signal #1 Info : 30M x 0.32mm x0.5 Signal #2 Info : 30M x 0.32mm x0.25µm

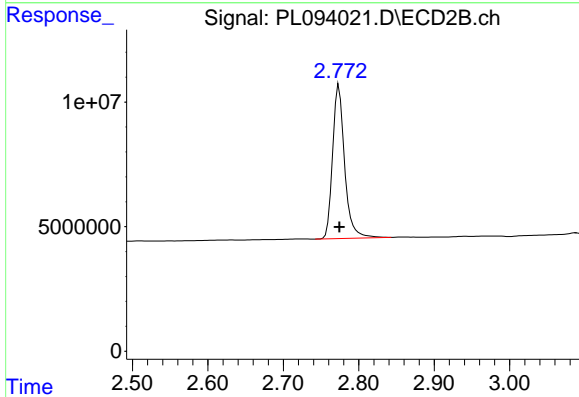




#1 Tetrachloro-m-xylene

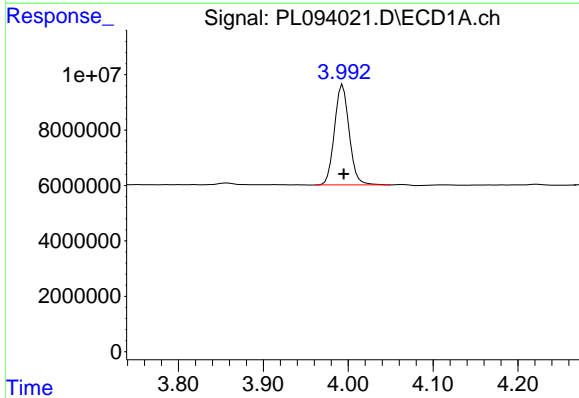
R.T.: 3.538 min
 Delta R.T.: 0.000 min
 Response: 58293426
 Conc: 21.65 ng/ml

Instrument :
 ECD_L
 ClientSampleId :
 PEM



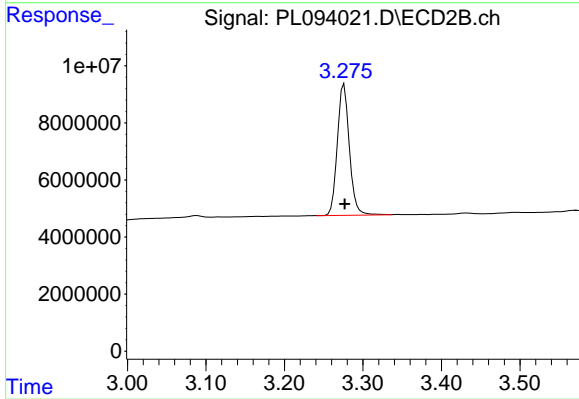
#1 Tetrachloro-m-xylene

R.T.: 2.774 min
 Delta R.T.: 0.000 min
 Response: 68352003
 Conc: 20.94 ng/ml



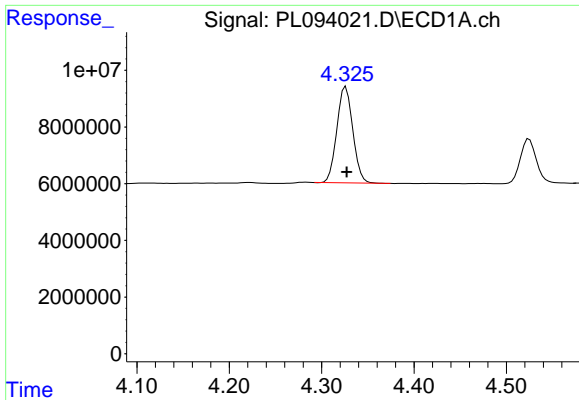
#2 alpha-BHC

R.T.: 3.994 min
 Delta R.T.: 0.000 min
 Response: 43573159
 Conc: 11.37 ng/ml



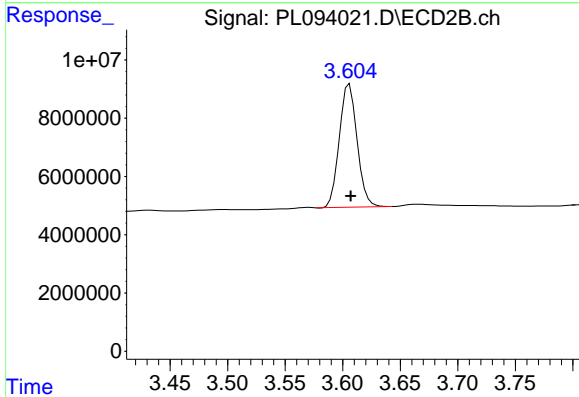
#2 alpha-BHC

R.T.: 3.276 min
 Delta R.T.: 0.000 min
 Response: 49127522
 Conc: 10.05 ng/ml

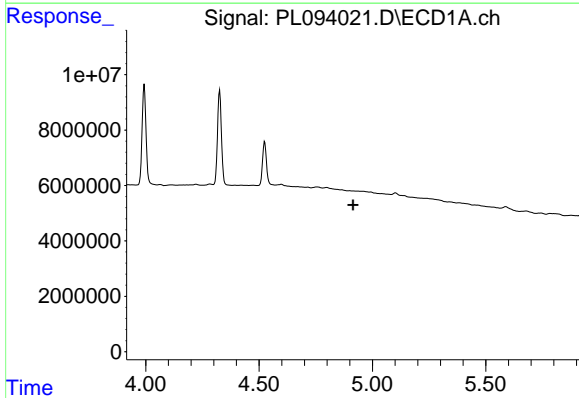


#3 gamma-BHC (Lindane)
 R.T.: 4.326 min
 Delta R.T.: 0.000 min
 Response: 40794064
 Conc: 11.08 ng/ml

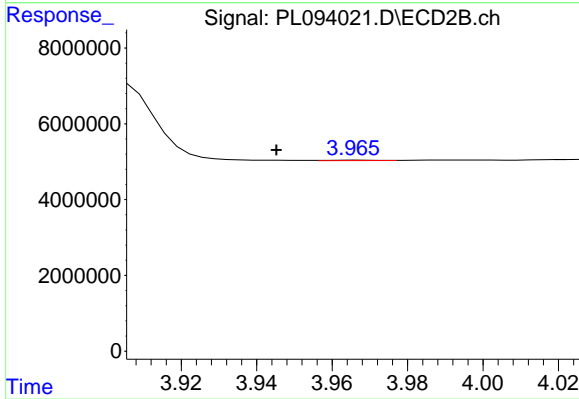
Instrument :
 ECD_L
 ClientSampleId :
 PEM



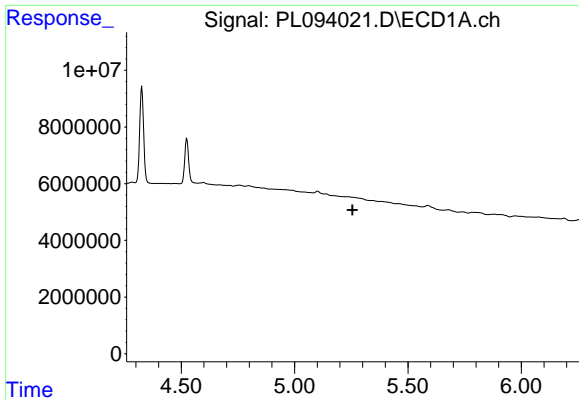
#3 gamma-BHC (Lindane)
 R.T.: 3.606 min
 Delta R.T.: -0.001 min
 Response: 45571882
 Conc: 9.61 ng/ml



#4 Heptachlor
 R.T.: 0.000 min
 Exp R.T. : 4.914 min
 Response: 0
 Conc: N.D.

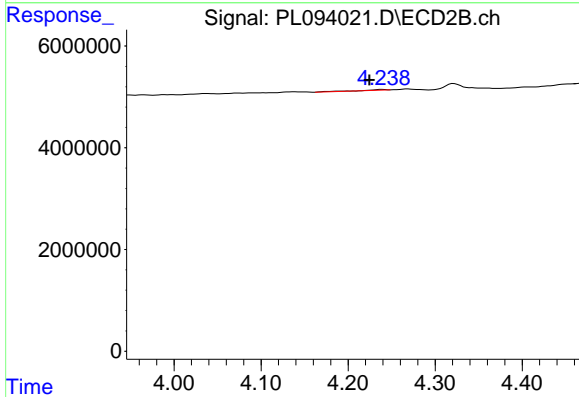


#4 Heptachlor
 R.T.: 3.966 min
 Delta R.T.: 0.021 min
 Response: 96017
 Conc: 0.02 ng/ml

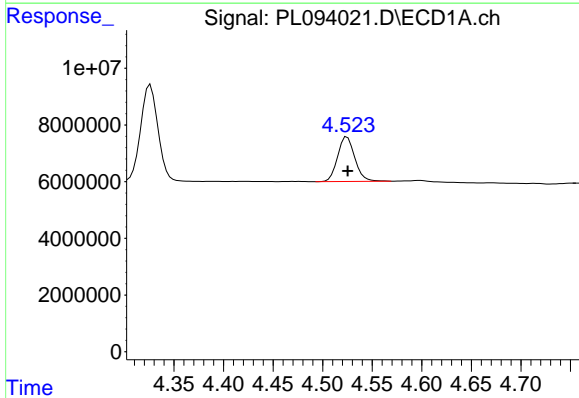


#5 Aldrin
 R.T.: 0.000 min
 Exp R.T.: 5.256 min
 Response: 0
 Conc: N.D.

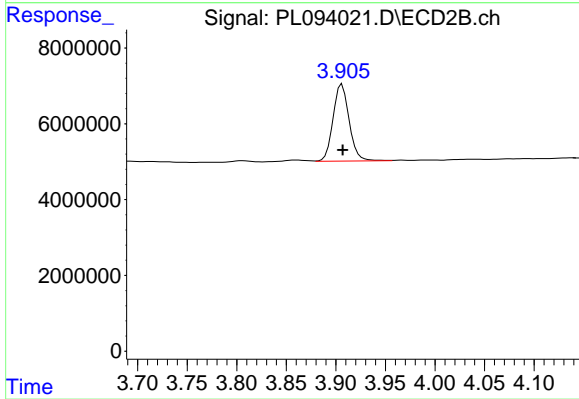
Instrument :
 ECD_L
 ClientSampleId :
 PEM



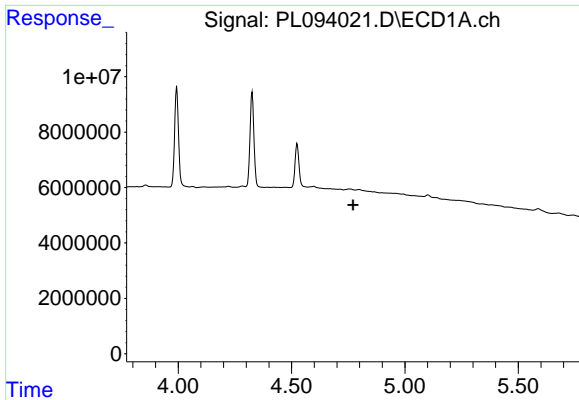
#5 Aldrin
 R.T.: 4.239 min
 Delta R.T.: 0.015 min
 Response: 247606
 Conc: 0.05 ng/ml



#6 beta-BHC
 R.T.: 4.525 min
 Delta R.T.: 0.000 min
 Response: 19098949
 Conc: 11.88 ng/ml



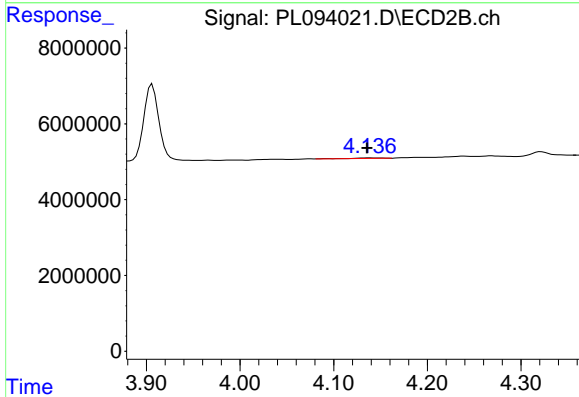
#6 beta-BHC
 R.T.: 3.906 min
 Delta R.T.: 0.000 min
 Response: 22940294
 Conc: 11.48 ng/ml



#7 delta-BHC

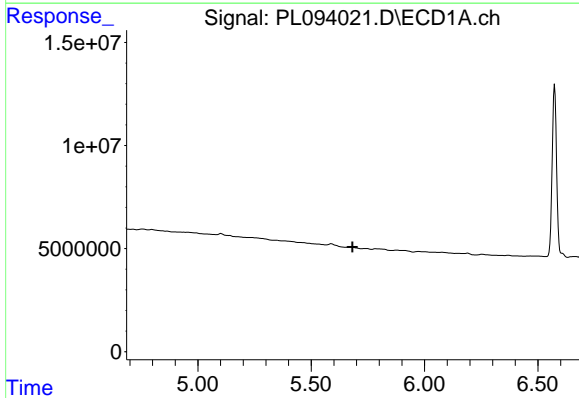
R.T.: 0.000 min
 Exp R.T. : 4.772 min
 Response: 0
 Conc: N.D.

Instrument :
 ECD_L
 ClientSampleId :
 PEM



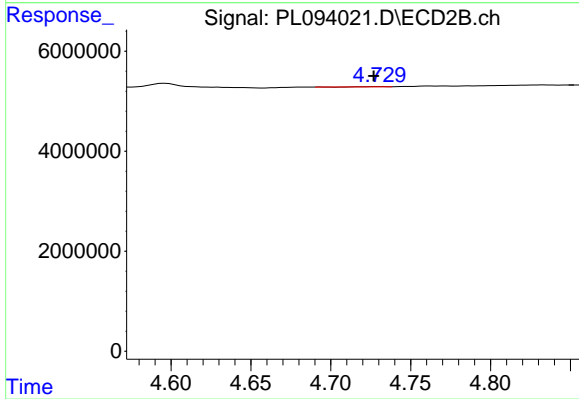
#7 delta-BHC

R.T.: 4.138 min
 Delta R.T.: 0.003 min
 Response: 258892
 Conc: 0.05 ng/ml



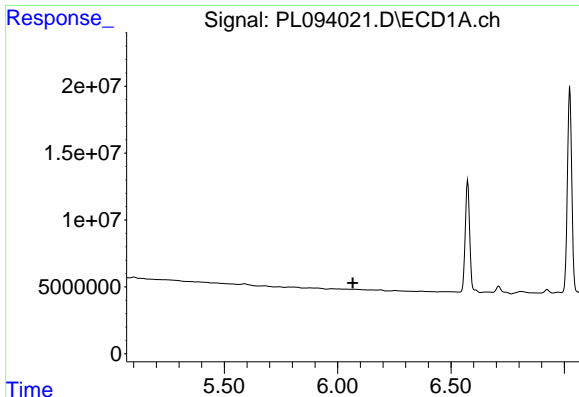
#8 Heptachlor epoxide

R.T.: 0.000 min
 Exp R.T. : 5.682 min
 Response: 0
 Conc: N.D.



#8 Heptachlor epoxide

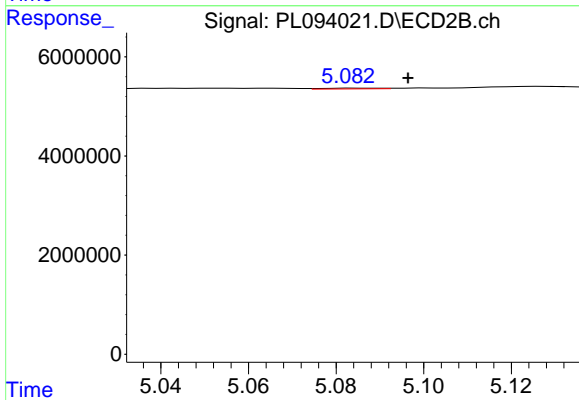
R.T.: 4.730 min
 Delta R.T.: 0.003 min
 Response: 24884
 Conc: 0.01 ng/ml



#9 Endosulfan I

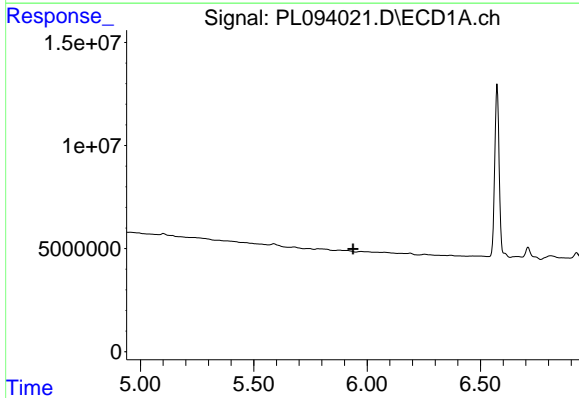
R.T.: 0.000 min
 Exp R.T.: 6.067 min
 Response: 0
 Conc: N.D.

Instrument :
 ECD_L
 ClientSampleId :
 PEM



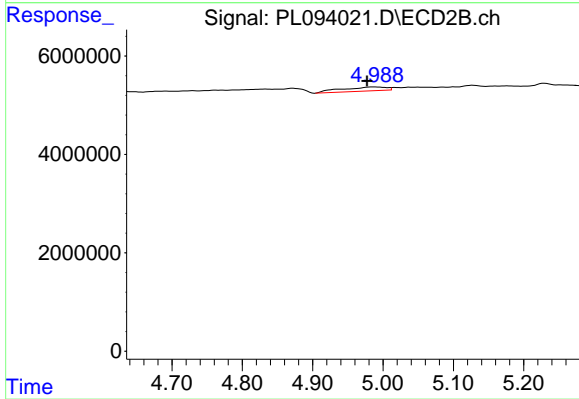
#9 Endosulfan I

R.T.: 5.085 min
 Delta R.T.: -0.012 min
 Response: 151650
 Conc: 0.04 ng/ml



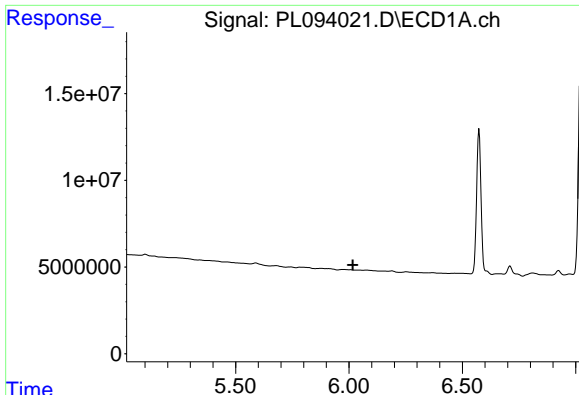
#10 gamma-Chlordane

R.T.: 0.000 min
 Exp R.T.: 5.938 min
 Response: 0
 Conc: N.D.



#10 gamma-Chlordane

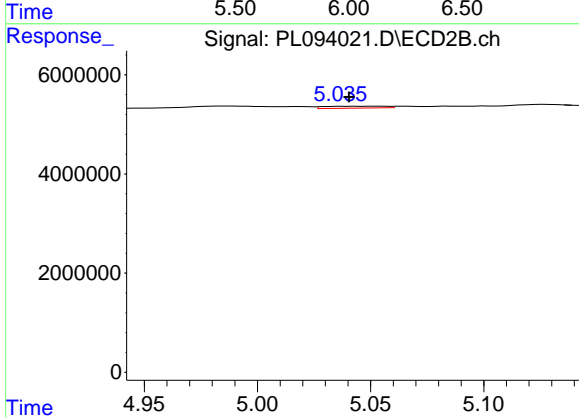
R.T.: 4.988 min
 Delta R.T.: 0.010 min
 Response: 3687655
 Conc: 0.87 ng/ml



#11 alpha-Chlordane

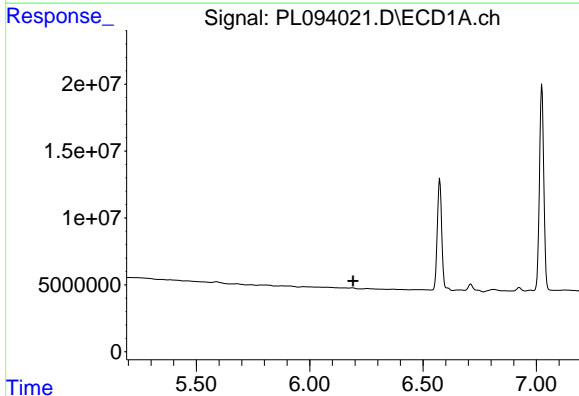
R.T.: 0.000 min
 Exp R.T. : 6.017 min
 Response: 0
 Conc: N.D.

Instrument :
 ECD_L
 ClientSampleId :
 PEM



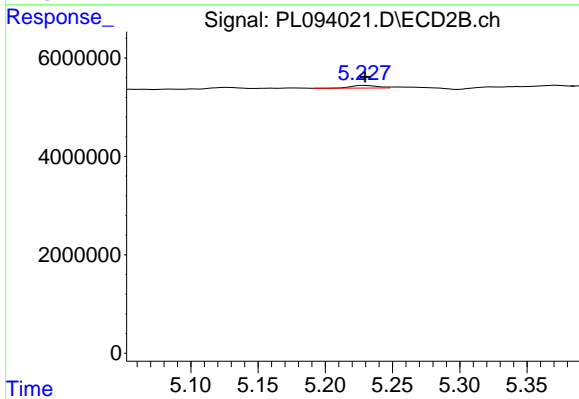
#11 alpha-Chlordane

R.T.: 5.038 min
 Delta R.T.: -0.002 min
 Response: 743908
 Conc: 0.18 ng/ml



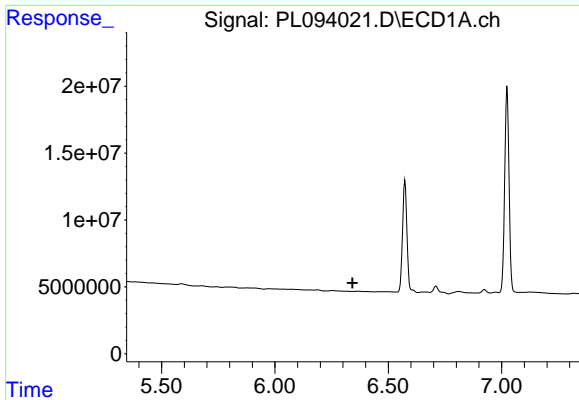
#12 4,4'-DDE

R.T.: 0.000 min
 Exp R.T. : 6.191 min
 Response: 0
 Conc: N.D.



#12 4,4'-DDE

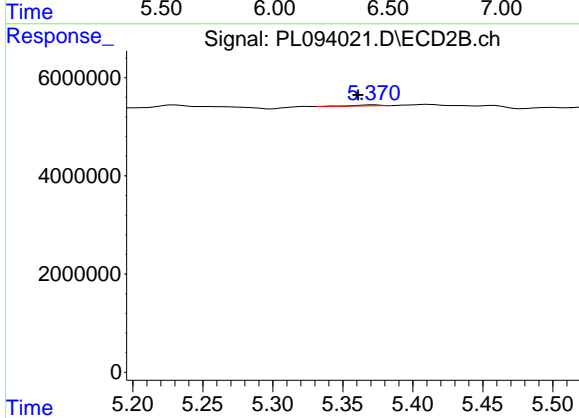
R.T.: 5.229 min
 Delta R.T.: 0.000 min
 Response: 731162
 Conc: 0.18 ng/ml



#13 Dieldrin

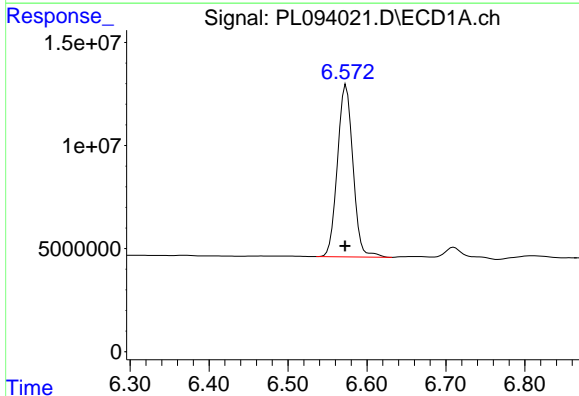
R.T.: 0.000 min
 Exp R.T.: 6.343 min
 Response: 0
 Conc: N.D.

Instrument :
 ECD_L
 ClientSampleId :
 PEM



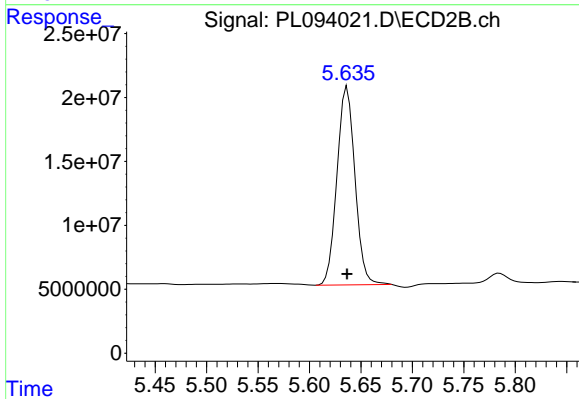
#13 Dieldrin

R.T.: 5.372 min
 Delta R.T.: 0.011 min
 Response: 247155
 Conc: 0.06 ng/ml



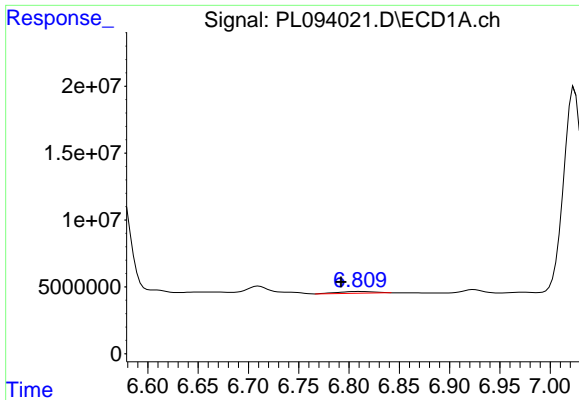
#14 Endrin

R.T.: 6.574 min
 Delta R.T.: 0.001 min
 Response: 114229217
 Conc: 48.72 ng/ml



#14 Endrin

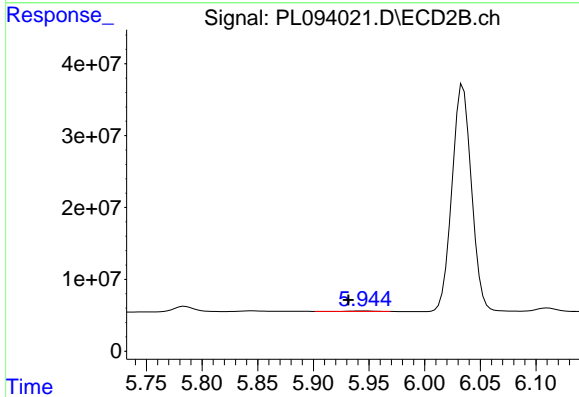
R.T.: 5.637 min
 Delta R.T.: 0.000 min
 Response: 188924930
 Conc: 51.16 ng/ml



#15 Endosulfan II

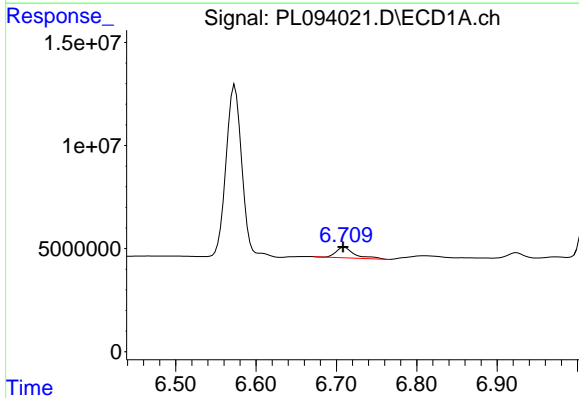
R.T.: 6.810 min
 Delta R.T.: 0.018 min
 Response: 3255855
 Conc: 1.35 ng/ml

Instrument :
 ECD_L
 ClientSampleId :
 PEM



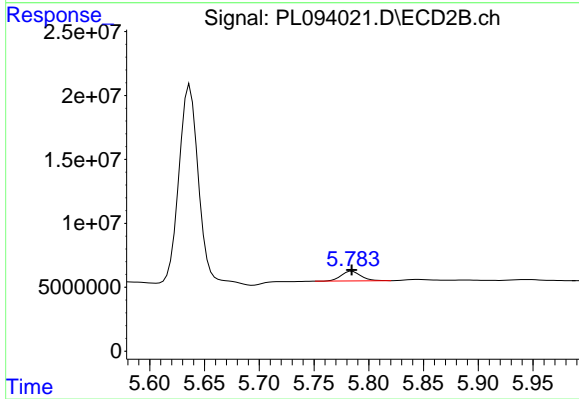
#15 Endosulfan II

R.T.: 5.945 min
 Delta R.T.: 0.014 min
 Response: 825846
 Conc: 0.22 ng/ml



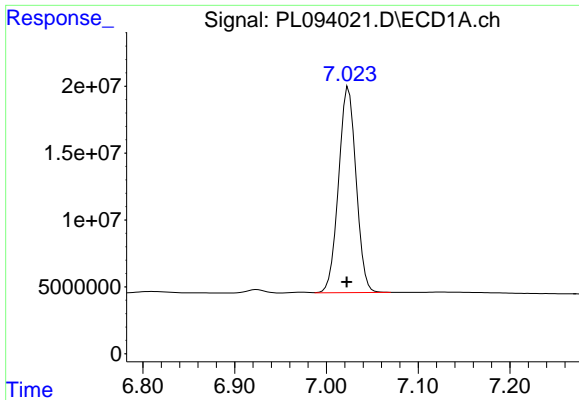
#16 4,4'-DDD

R.T.: 6.710 min
 Delta R.T.: 0.002 min
 Response: 8143003
 Conc: 4.28 ng/ml



#16 4,4'-DDD

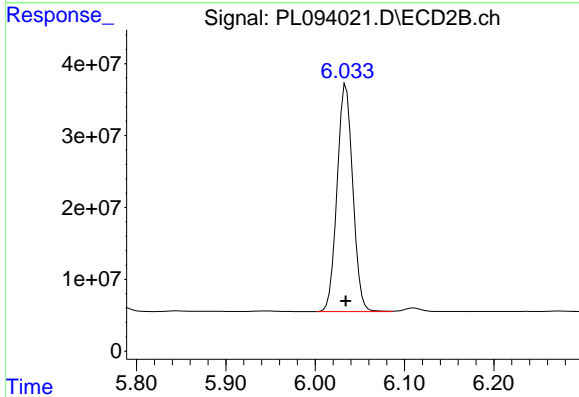
R.T.: 5.785 min
 Delta R.T.: 0.000 min
 Response: 9521463
 Conc: 3.02 ng/ml



#17 4,4'-DDT

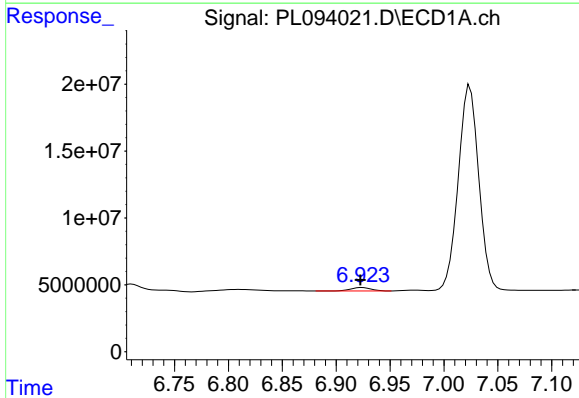
R.T.: 7.024 min
 Delta R.T.: 0.002 min
 Response: 203742236
 Conc: 103.31 ng/ml

Instrument :
 ECD_L
 ClientSampleId :
 PEM



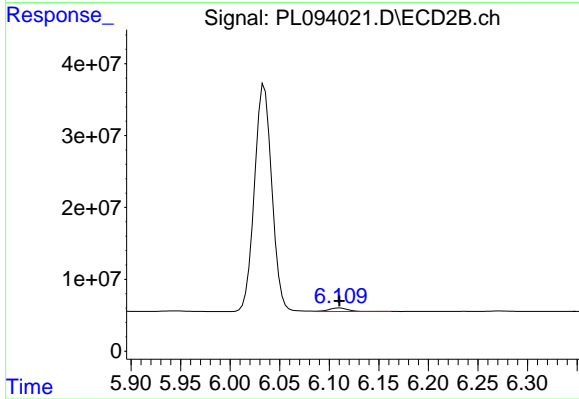
#17 4,4'-DDT

R.T.: 6.035 min
 Delta R.T.: 0.000 min
 Response: 385618345
 Conc: 118.50 ng/ml



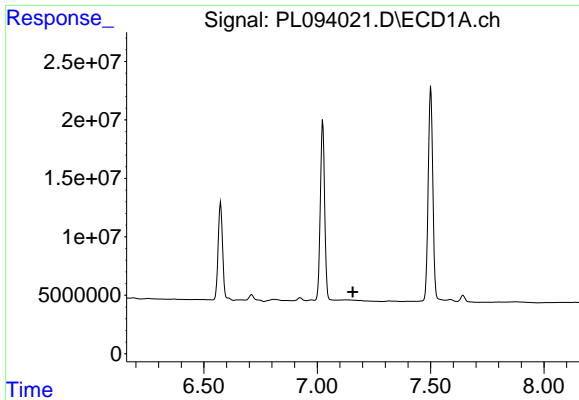
#18 Endrin aldehyde

R.T.: 6.924 min
 Delta R.T.: 0.001 min
 Response: 3301688
 Conc: 1.70 ng/ml



#18 Endrin aldehyde

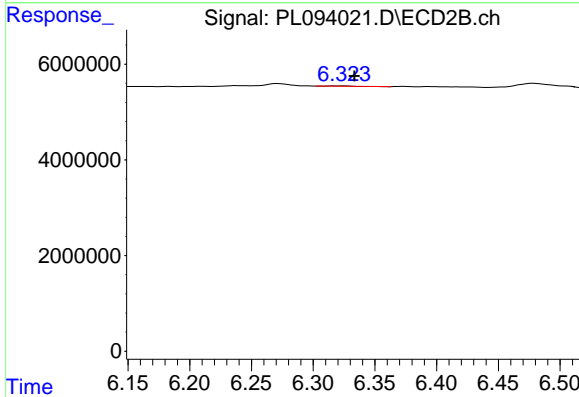
R.T.: 6.110 min
 Delta R.T.: 0.000 min
 Response: 6560657
 Conc: 2.15 ng/ml



#19 Endosulfan Sulfate

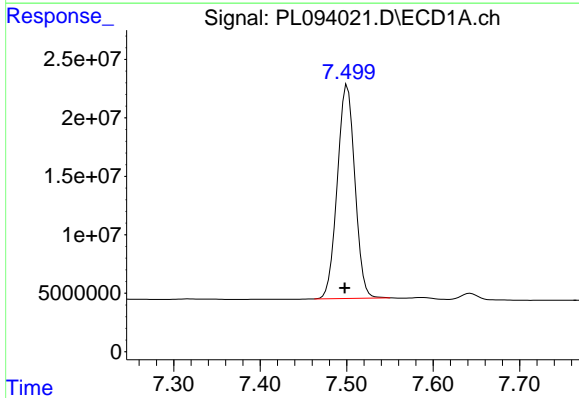
R.T.: 0.000 min
 Exp R.T.: 7.157 min
 Response: 0
 Conc: N.D.

Instrument :
 ECD_L
 ClientSampleId :
 PEM



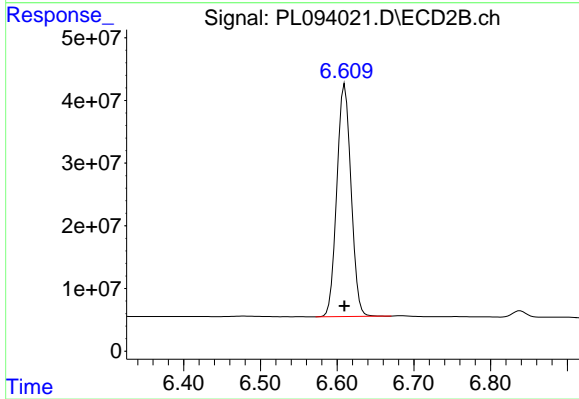
#19 Endosulfan Sulfate

R.T.: 6.324 min
 Delta R.T.: -0.009 min
 Response: 71214
 Conc: 0.02 ng/ml



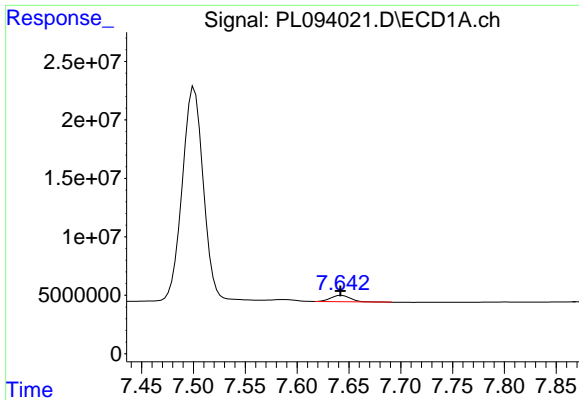
#20 Methoxychlor

R.T.: 7.501 min
 Delta R.T.: 0.003 min
 Response: 256255091
 Conc: 245.60 ng/ml



#20 Methoxychlor

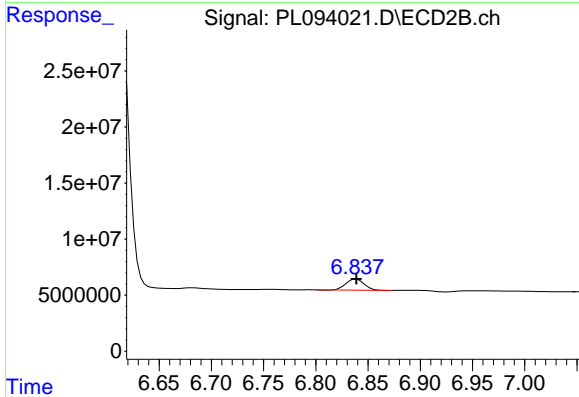
R.T.: 6.610 min
 Delta R.T.: 0.000 min
 Response: 477266333
 Conc: 266.91 ng/ml



#21 Endrin ketone

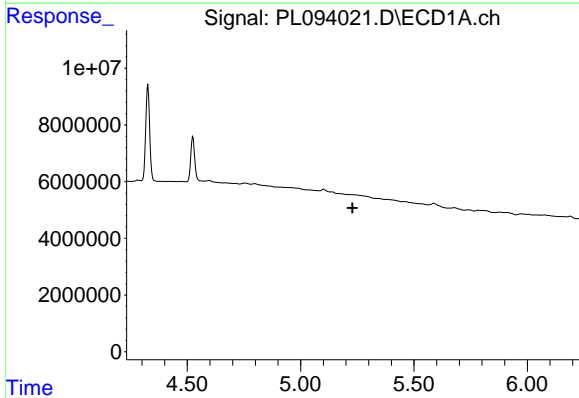
R.T.: 7.643 min
 Delta R.T.: 0.001 min
 Response: 7006909
 Conc: 2.78 ng/ml

Instrument :
 ECD_L
 ClientSampleId :
 PEM



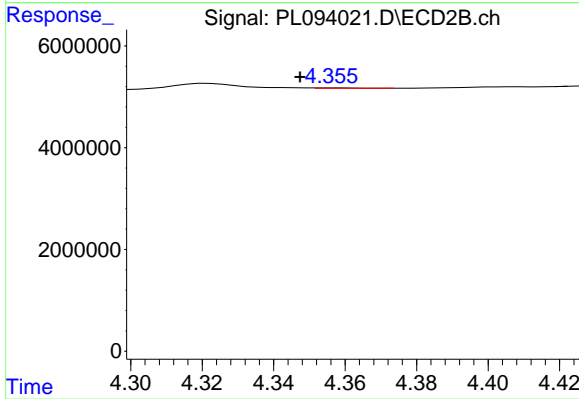
#21 Endrin ketone

R.T.: 6.839 min
 Delta R.T.: 0.000 min
 Response: 12039396
 Conc: 2.87 ng/ml



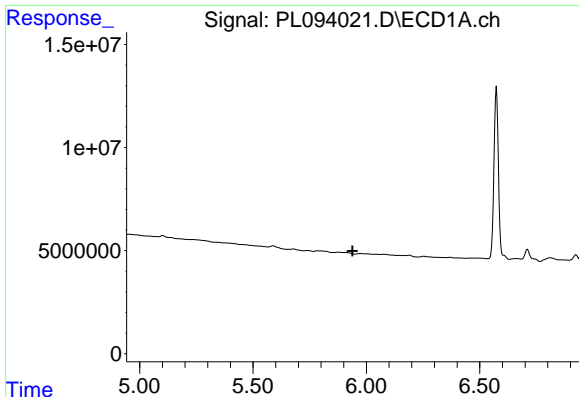
#24 Chlordane-2

R.T.: 0.000 min
 Exp R.T. : 5.229 min
 Response: 0
 Conc: N.D.



#24 Chlordane-2

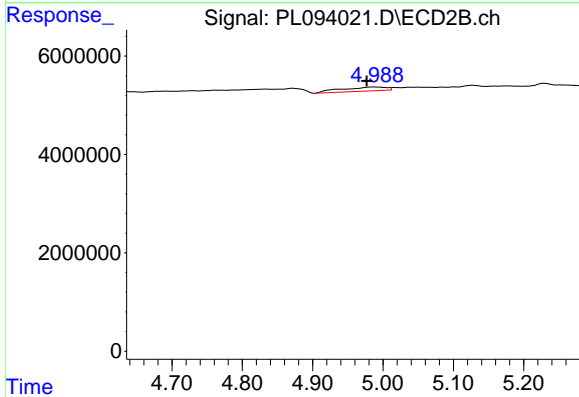
R.T.: 4.357 min
 Delta R.T.: 0.009 min
 Response: 78825
 Conc: 0.54 ng/ml



#25 Chlordane-3

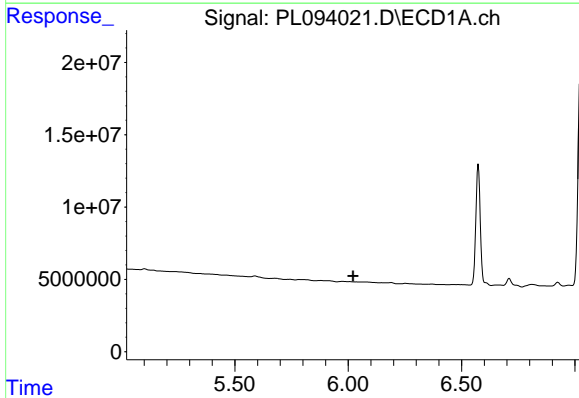
R.T.: 0.000 min
 Exp R.T. : 5.939 min
 Response: 0
 Conc: N.D.

Instrument :
 ECD_L
 ClientSampleId :
 PEM



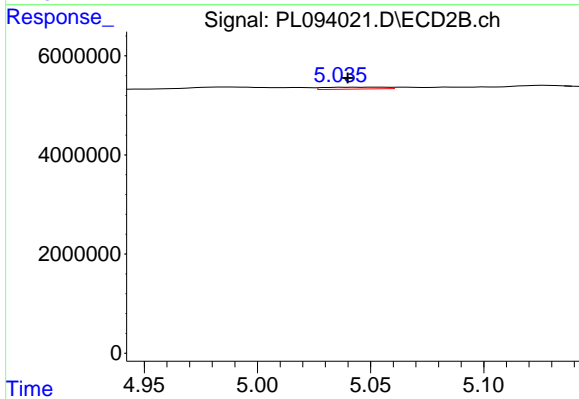
#25 Chlordane-3

R.T.: 4.988 min
 Delta R.T.: 0.011 min
 Response: 3687655
 Conc: 8.48 ng/ml



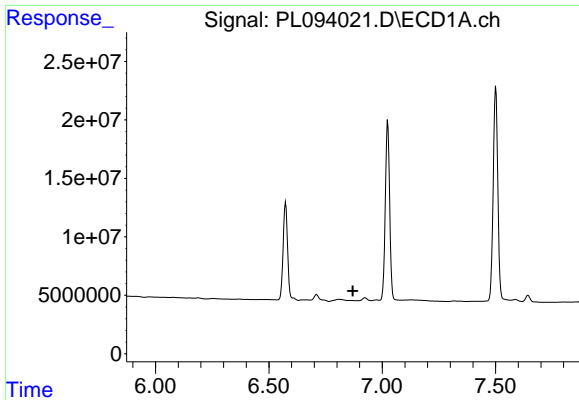
#26 Chlordane-4

R.T.: 0.000 min
 Exp R.T. : 6.021 min
 Response: 0
 Conc: N.D.



#26 Chlordane-4

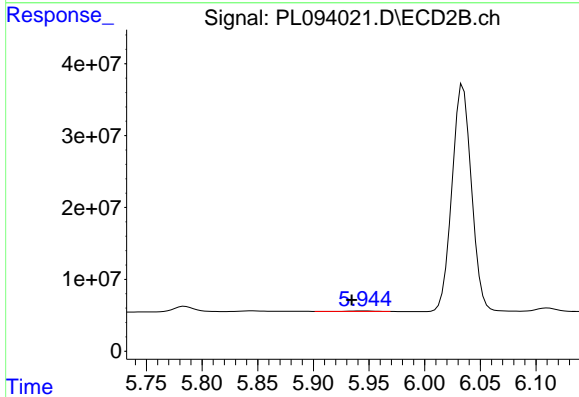
R.T.: 5.038 min
 Delta R.T.: -0.001 min
 Response: 743908
 Conc: 1.76 ng/ml



#27 Chlordane-5

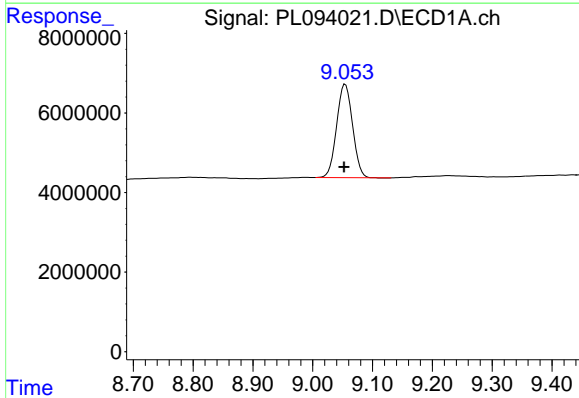
R.T.: 0.000 min
 Exp R.T.: 6.870 min
 Response: 0
 Conc: N.D.

Instrument :
 ECD_L
 ClientSampleId :
 PEM



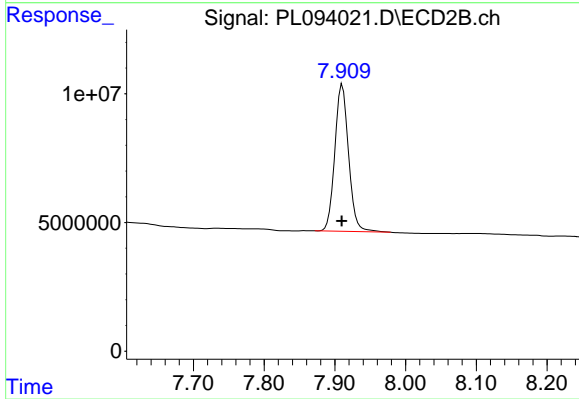
#27 Chlordane-5

R.T.: 5.945 min
 Delta R.T.: 0.011 min
 Response: 825846
 Conc: 5.39 ng/ml



#28 Decachlorobiphenyl

R.T.: 9.055 min
 Delta R.T.: 0.002 min
 Response: 43477269
 Conc: 20.78 ng/ml



#28 Decachlorobiphenyl

R.T.: 7.911 min
 Delta R.T.: 0.000 min
 Response: 77133192
 Conc: 22.01 ng/ml