

Data Path : Z:\pestpcbsrv\HPCHEM1\ECD\_L\Data\PL020325\  
 Data File : PL094005.D  
 Signal(s) : Signal #1: ECD1A.ch Signal #2: ECD2B.ch  
 Acq On : 03 Feb 2025 18:43  
 Operator : AR\AJ  
 Sample : Q1232-16  
 Misc :  
 ALS Vial : 24 Sample Multiplier: 1

Instrument :  
 ECD\_L  
 ClientSampleId :  
 JPP-42.2-012925

Integration File signal 1: autoint1.e  
 Integration File signal 2: autoint2.e  
 Quant Time: Feb 04 00:47:23 2025  
 Quant Method : Z:\pestpcbsrv\HPCHEM1\ECD\_L\methods\PL012125.M  
 Quant Title : GC Extractables  
 QLast Update : Tue Jan 21 14:58:05 2025  
 Response via : Initial Calibration  
 Integrator: ChemStation

Volume Inj. : 1 µl  
 Signal #1 Phase : ZB-MR1 Signal #2 Phase: ZB-MR2  
 Signal #1 Info : 30M x 0.32mm x0.5 Signal #2 Info : 30M x 0.32mm x0.25µm

Compound	RT#1	RT#2	Resp#1	Resp#2	ng/ml	ng/ml
-----						
System Monitoring Compounds						
1) SA Tetrachlo...	3.539	2.774	57461151	67493549	21.339	20.677
28) SA Decachlor...	9.057	7.911	52053735	89676101	24.883	25.592

Target Compounds

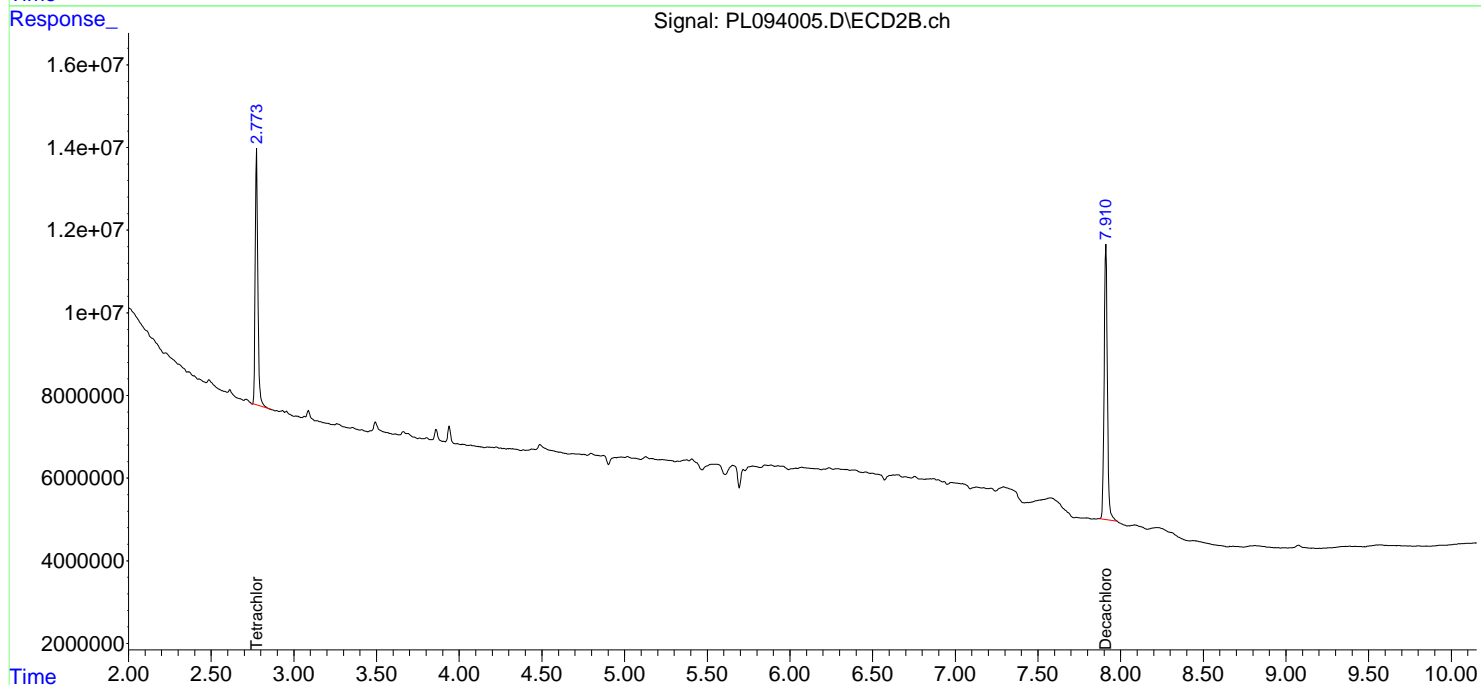
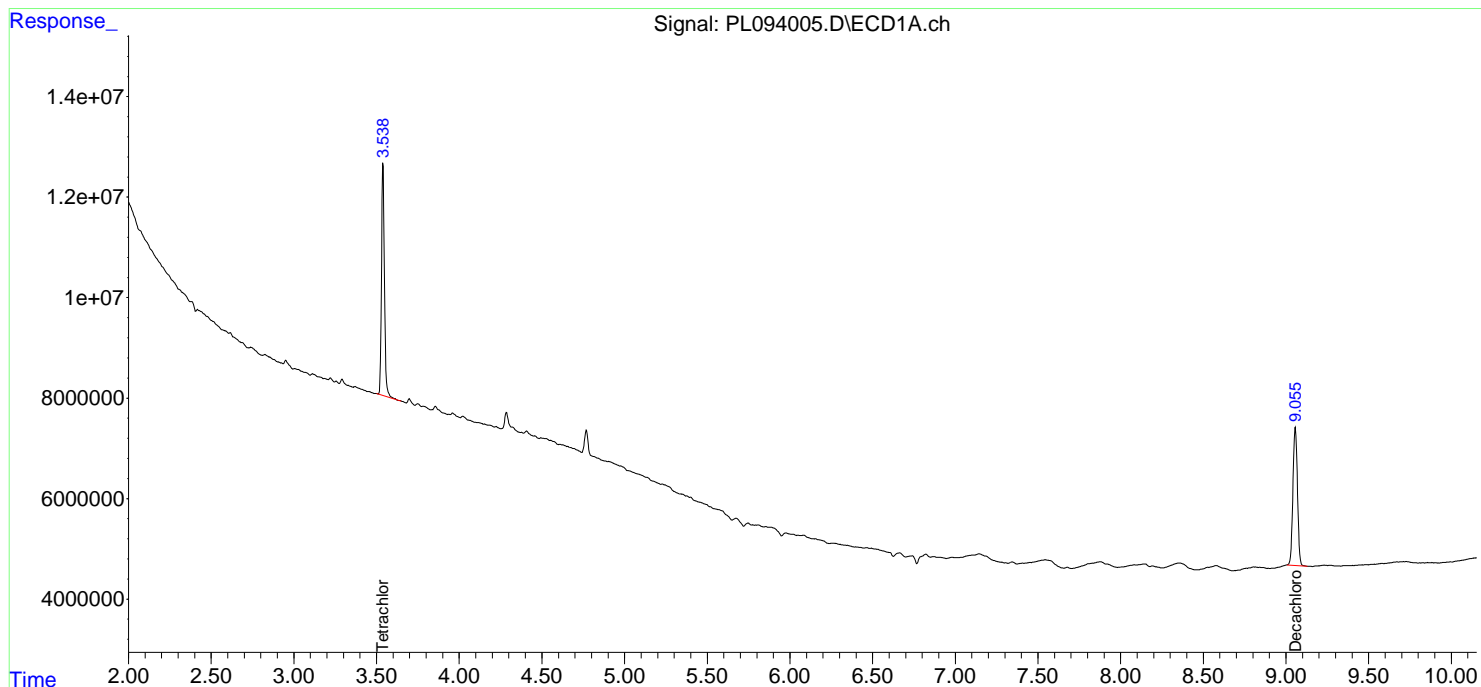
(f)=RT Delta > 1/2 Window (#)=Amounts differ by > 25% (m)=manual int.

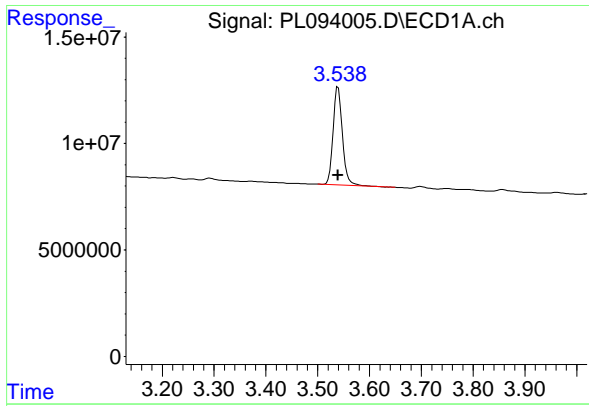
Data Path : Z:\pestpcbsrv\HPCHEM1\ECD\_L\Data\PL020325\  
Data File : PL094005.D  
Signal(s) : Signal #1: ECD1A.ch Signal #2: ECD2B.ch  
Acq On : 03 Feb 2025 18:43  
Operator : AR\AJ  
Sample : Q1232-16  
Misc :  
ALS Vial : 24 Sample Multiplier: 1

Instrument :  
ECD\_L  
ClientSampleId :  
JPP-42.2-012925

Integration File signal 1: autoint1.e  
Integration File signal 2: autoint2.e  
Quant Time: Feb 04 00:47:23 2025  
Quant Method : Z:\pestpcbsrv\HPCHEM1\ECD\_L\methods\PL012125.M  
Quant Title : GC Extractables  
QLast Update : Tue Jan 21 14:58:05 2025  
Response via : Initial Calibration  
Integrator: ChemStation

Volume Inj. : 1 µl  
Signal #1 Phase : ZB-MR1 Signal #2 Phase: ZB-MR2  
Signal #1 Info : 30M x 0.32mm x0.5 Signal #2 Info : 30M x 0.32mm x0.25µm

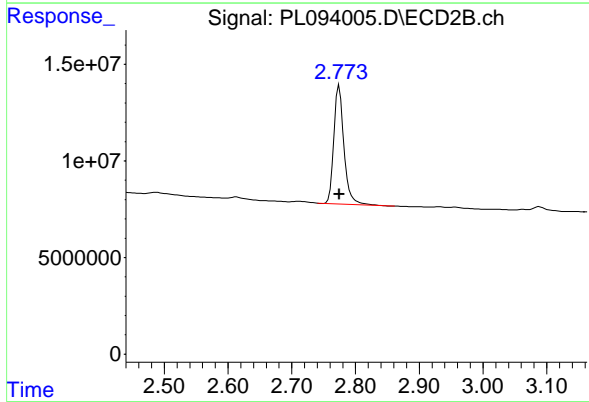




#1 Tetrachloro-m-xylene

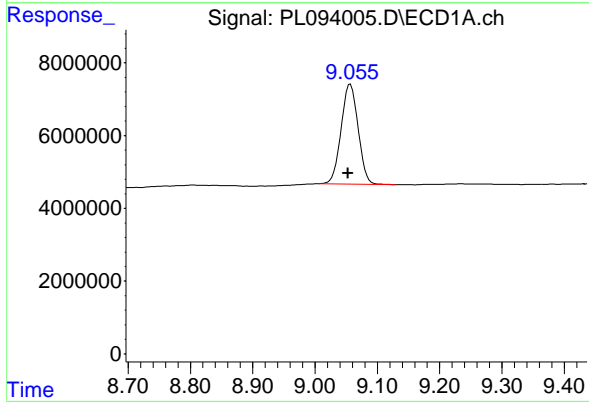
R.T.: 3.539 min  
 Delta R.T.: 0.000 min  
 Response: 57461151  
 Conc: 21.34 ng/ml

Instrument :  
 ECD\_L  
 ClientSampleId :  
 JPP-42.2-012925



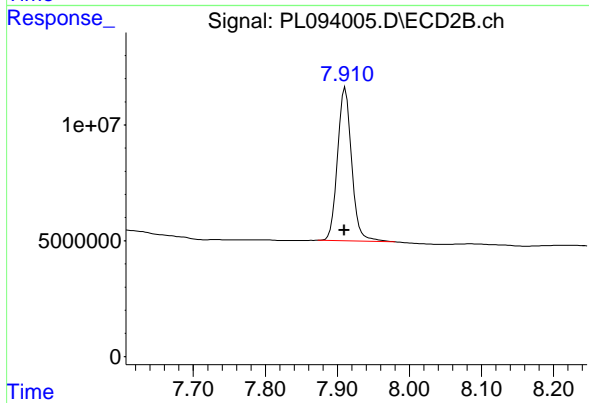
#1 Tetrachloro-m-xylene

R.T.: 2.774 min  
 Delta R.T.: 0.000 min  
 Response: 67493549  
 Conc: 20.68 ng/ml



#28 Decachlorobiphenyl

R.T.: 9.057 min  
 Delta R.T.: 0.004 min  
 Response: 52053735  
 Conc: 24.88 ng/ml



#28 Decachlorobiphenyl

R.T.: 7.911 min  
 Delta R.T.: 0.001 min  
 Response: 89676101  
 Conc: 25.59 ng/ml