

Data Path : Z:\pestpcbsrv\HPCHEM1\ECD_L\Data\PL020325\
 Data File : PL094025.D
 Signal(s) : Signal #1: ECD1A.ch Signal #2: ECD2B.ch
 Acq On : 03 Feb 2025 23:47
 Operator : AR\AJ
 Sample : Q1254-01
 Misc :
 ALS Vial : 41 Sample Multiplier: 1

Instrument :
 ECD_L
ClientSampleId :
 OK-02-01312025

Manual Integrations
APPROVED
 Reviewed By :Abdul Mirza 02/04/2025
 Supervised By :Ankita Jodhani 02/04/2025

Integration File signal 1: autoint1.e
 Integration File signal 2: autoint2.e
 Quant Time: Feb 04 05:09:53 2025
 Quant Method : Z:\pestpcbsrv\HPCHEM1\ECD_L\methods\PL012125.M
 Quant Title : GC Extractables
 QLast Update : Tue Jan 21 14:58:05 2025
 Response via : Initial Calibration
 Integrator: ChemStation

Volume Inj. : 1 µl
 Signal #1 Phase : ZB-MR1 Signal #2 Phase: ZB-MR2
 Signal #1 Info : 30M x 0.32mm x0.5 Signal #2 Info : 30M x 0.32mm x0.25µm

Compound	RT#1	RT#2	Resp#1	Resp#2	ng/ml	ng/ml

System Monitoring Compounds						
1) SA Tetrachlo...	3.536	2.772	17164149	22200807	6.374m	6.801m
28) SA Decachlor...	9.054	7.909	17992834	23499230	8.601m	6.706m

Target Compounds

(f)=RT Delta > 1/2 Window (#)=Amounts differ by > 25% (m)=manual int.

Data Path : Z:\pestpcbsrv\HPCHEM1\ECD_L\Data\PL020325\
Data File : PL094025.D
Signal(s) : Signal #1: ECD1A.ch Signal #2: ECD2B.ch
Acq On : 03 Feb 2025 23:47
Operator : AR\AJ
Sample : Q1254-01
Misc :
ALS Vial : 41 Sample Multiplier: 1

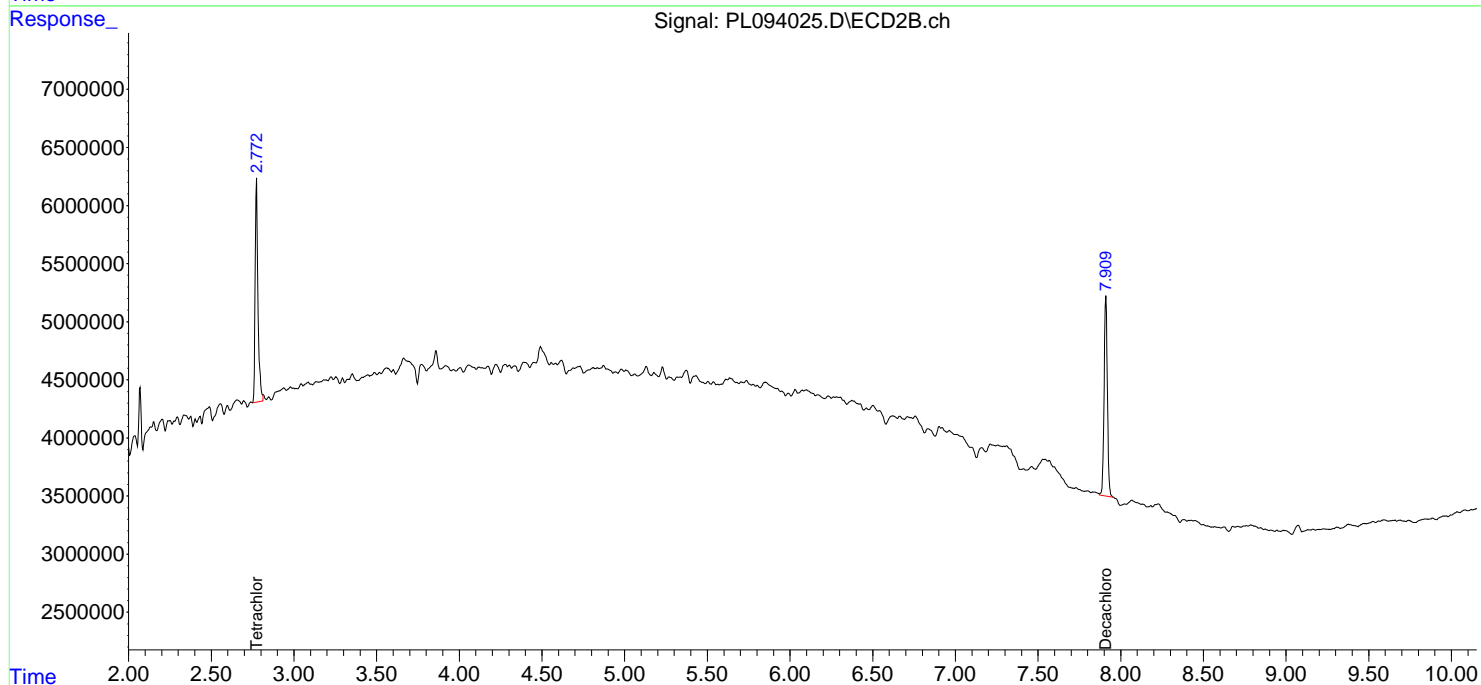
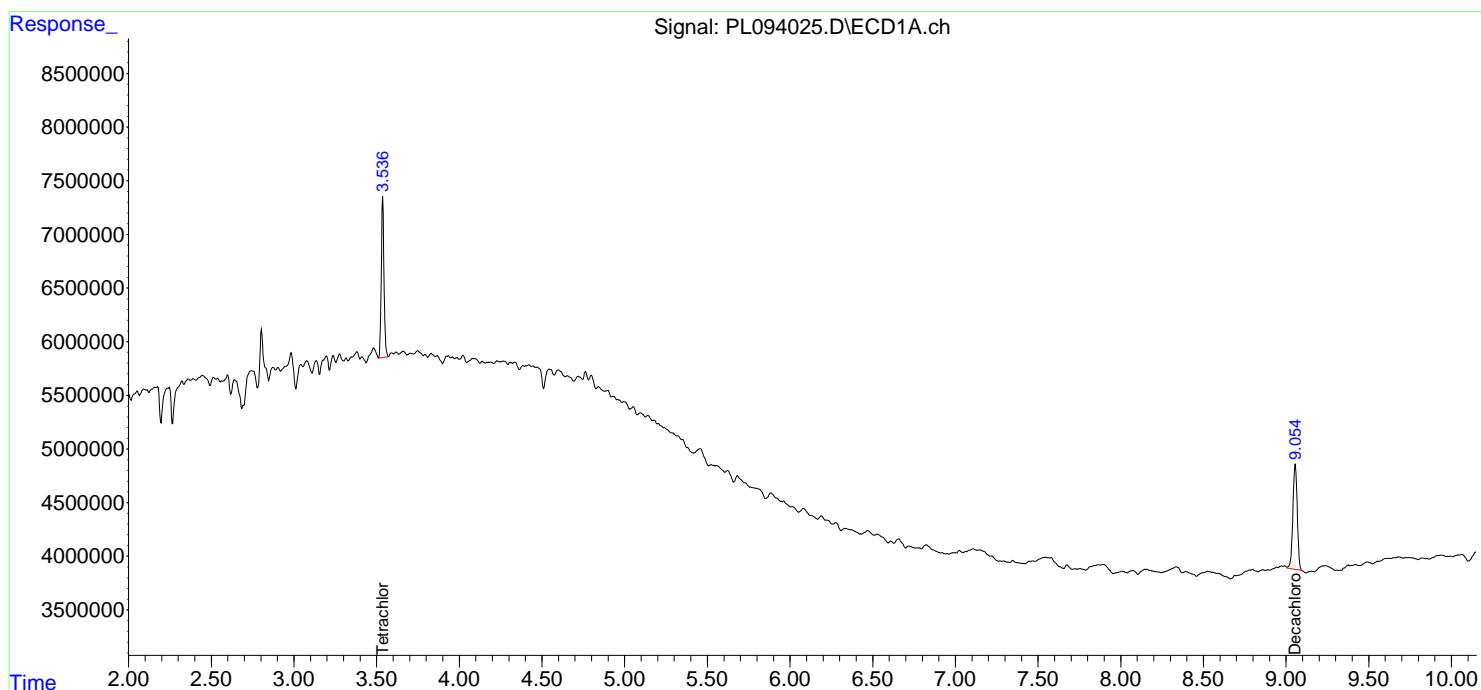
Instrument :
ECD_L
ClientSampleId :
OK-02-01312025

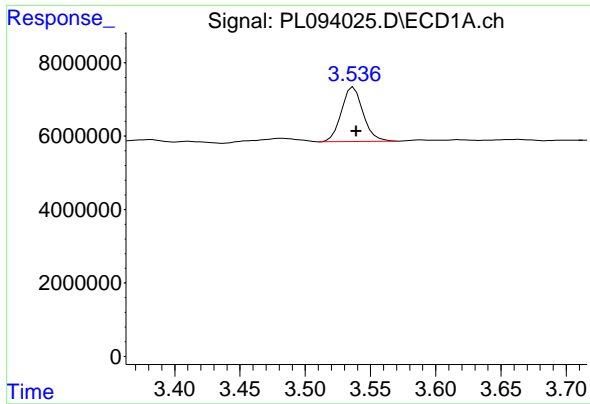
Manual Integrations
APPROVED

Reviewed By :Abdul Mirza 02/04/2025
Supervised By :Ankita Jodhani 02/04/2025

Integration File signal 1: autoint1.e
Integration File signal 2: autoint2.e
Quant Time: Feb 04 05:09:53 2025
Quant Method : Z:\pestpcbsrv\HPCHEM1\ECD_L\methods\PL012125.M
Quant Title : GC Extractables
QLast Update : Tue Jan 21 14:58:05 2025
Response via : Initial Calibration
Integrator: ChemStation

Volume Inj. : 1 µl
Signal #1 Phase : ZB-MR1 Signal #2 Phase: ZB-MR2
Signal #1 Info : 30M x 0.32mm x0.5 Signal #2 Info : 30M x 0.32mm x0.25µm





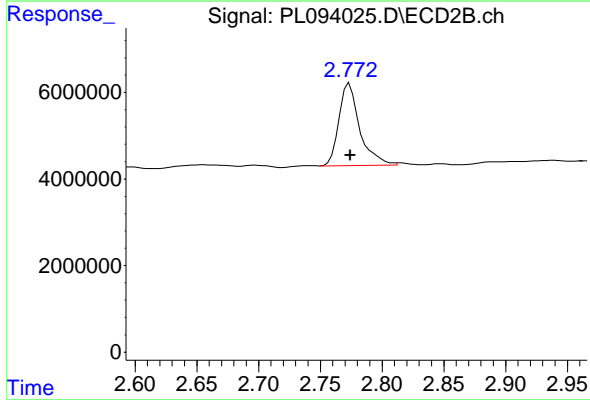
#1 Tetrachloro-m-xylene

R.T.: 3.536 min
 Delta R.T.: -0.003 min
 Response: 17164149
 Conc: 6.37 ng/ml

Instrument : ECD_L
 Client Sample Id : OK-02-01312025

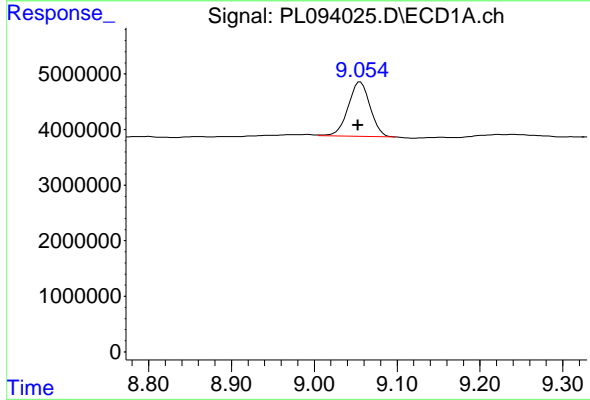
Manual Integrations
 APPROVED

Reviewed By :Abdul Mirza 02/04/2025
 Supervised By :Ankita Jodhani 02/04/2025



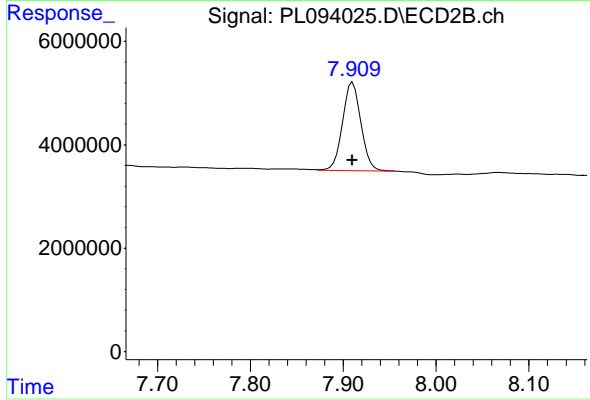
#1 Tetrachloro-m-xylene

R.T.: 2.772 min
 Delta R.T.: -0.002 min
 Response: 22200807
 Conc: 6.80 ng/ml m



#28 Decachlorobiphenyl

R.T.: 9.054 min
 Delta R.T.: 0.001 min
 Response: 17992834
 Conc: 8.60 ng/ml m



#28 Decachlorobiphenyl

R.T.: 7.909 min
 Delta R.T.: 0.000 min
 Response: 23499230
 Conc: 6.71 ng/ml m