

Data Path : Z:\pestpcbsrv\HPCHEM1\ECD_L\Data\PL020419\
Data File : PL044396.D
Signal(s) : Signal #1: ECD1A.ch Signal #2: ECD2B.ch
Acq On : 04 Feb 2019 11:56
Operator : AJ\SJ
Sample : HEXANE
Misc :
ALS Vial : 1 Sample Multiplier: 1

Instrument :
ECD_L
ClientSampleId :
HEXANE

Integration File signal 1: autoint1.e
Integration File signal 2: autoint2.e
Quant Time: Feb 05 00:04:34 2019
Quant Method : Z:\pestpcbsrv\HPCHEM1\ECD_L\methods\PL012219.M
Quant Title : GC Extractables
QLast Update : Mon Jan 28 01:20:09 2019
Response via : Initial Calibration
Integrator: ChemStation

Volume Inj. : 2 µl
Signal #1 Phase : ZB-MR1 Signal #2 Phase: ZB-MR2
Signal #1 Info : 30M x 0.32mm x0.5 Signal #2 Info : 30M x 0.32mm x0.25µm

Compound	RT#1	RT#2	Resp#1	Resp#2	ng/ml	ng/ml
----------	------	------	--------	--------	-------	-------

System Monitoring Compounds

Target Compounds

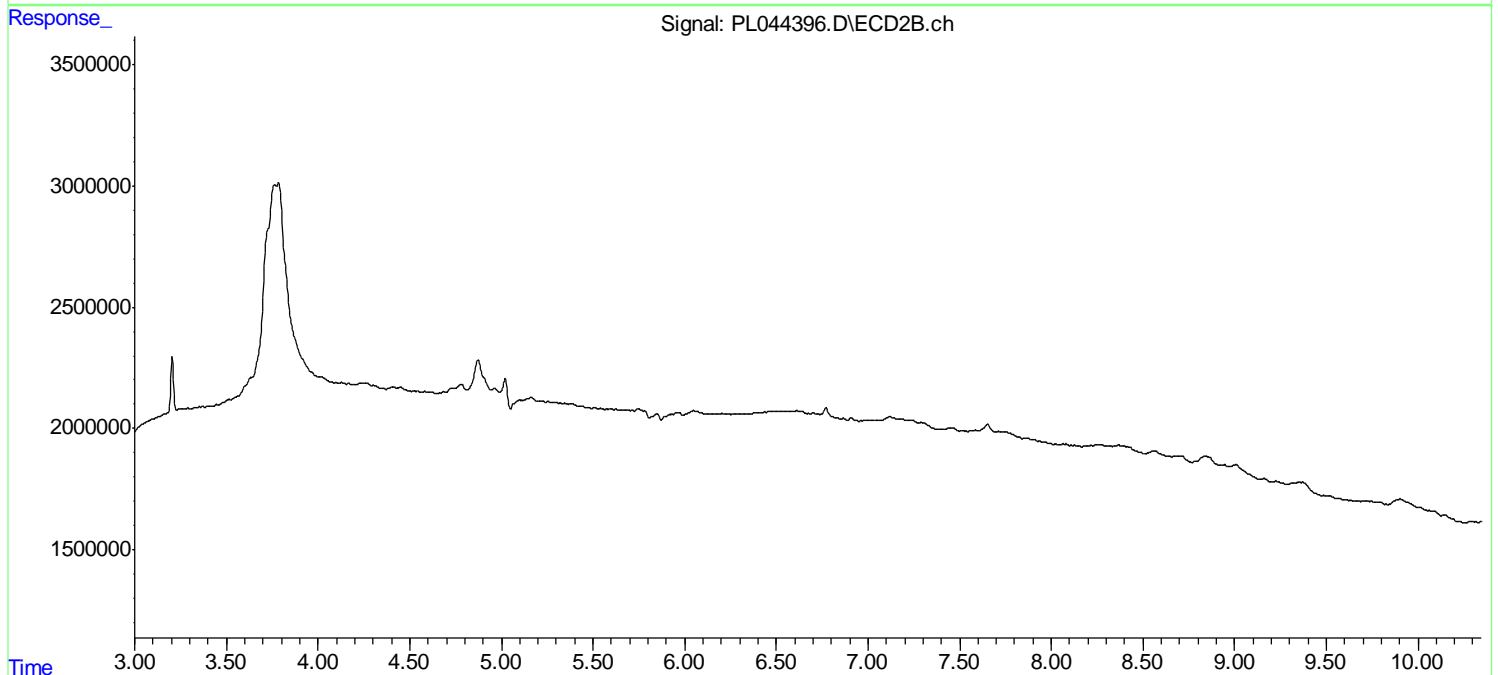
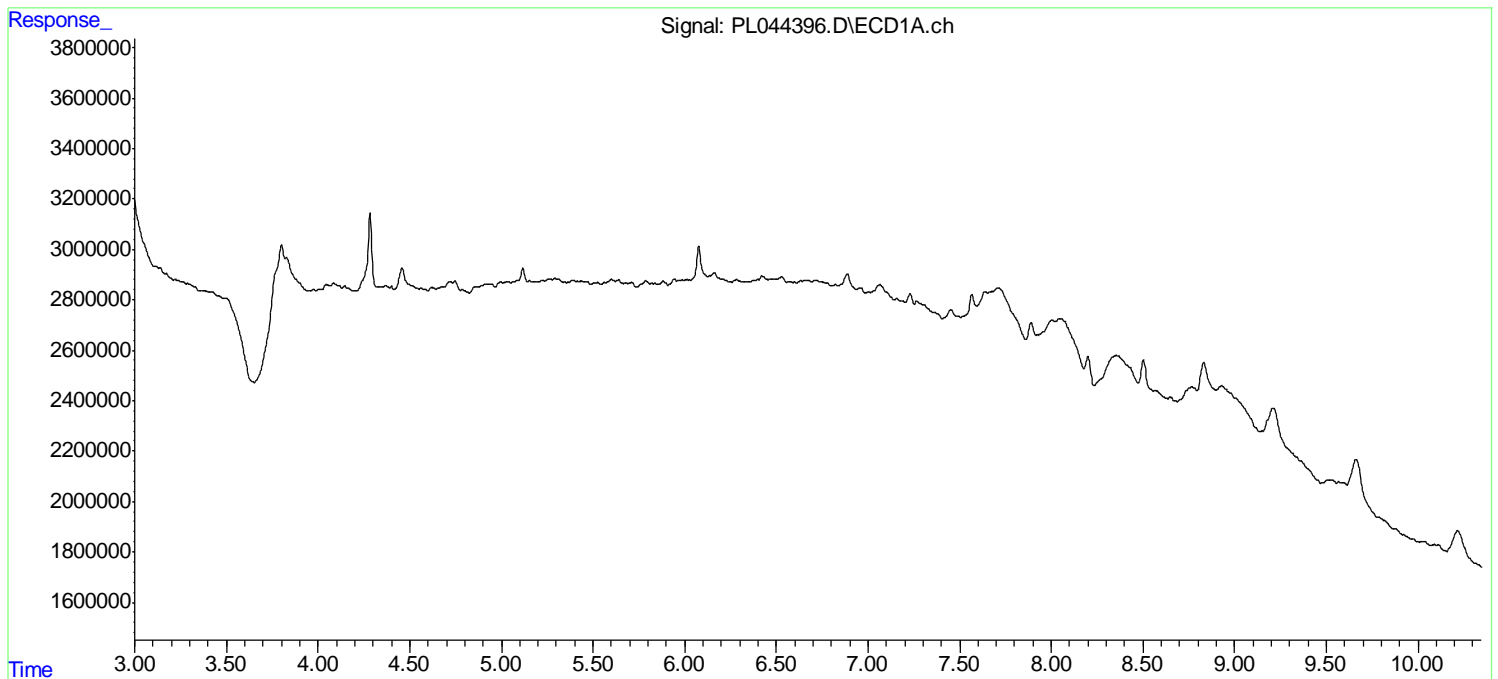
(f)=RT Delta > 1/2 Window (#)=Amounts differ by > 25% (m)=manual int.

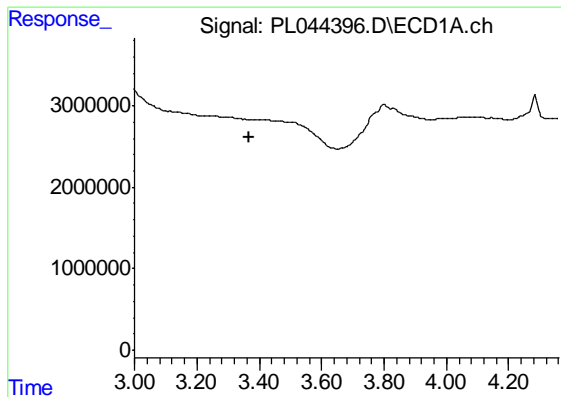
Data Path : Z:\pestpcbsrv\HPCHEM1\ECD_L\Data\PL020419\
Data File : PL044396.D
Signal(s) : Signal #1: ECD1A.ch Signal #2: ECD2B.ch
Acq On : 04 Feb 2019 11:56
Operator : AJ\SJ
Sample : HEXANE
Misc :
ALS Vial : 1 Sample Multiplier: 1

Instrument :
ECD_L
ClientSampleId :
HEXANE

Integration File signal 1: autoint1.e
Integration File signal 2: autoint2.e
Quant Time: Feb 05 00:04:34 2019
Quant Method : Z:\pestpcbsrv\HPCHEM1\ECD_L\methods\PL012219.M
Quant Title : GC Extractables
QLast Update : Mon Jan 28 01:20:09 2019
Response via : Initial Calibration
Integrator: ChemStation

Volume Inj. : 2 µl
Signal #1 Phase : ZB-MR1 Signal #2 Phase: ZB-MR2
Signal #1 Info : 30M x 0.32mm x0.5 Signal #2 Info : 30M x 0.32mm x0.25µm

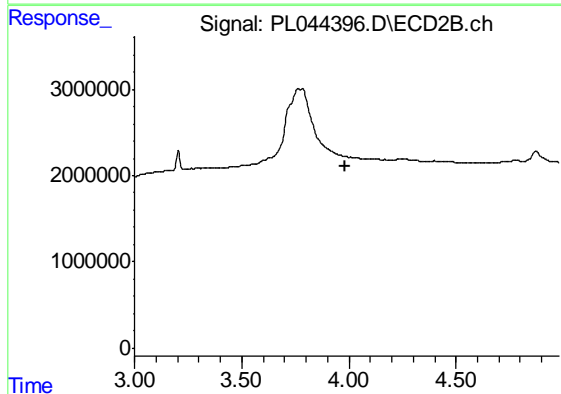




#1 Tetrachloro-m-xylene

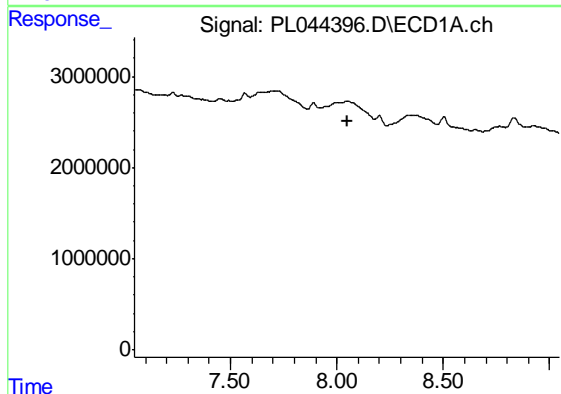
R.T.: 0.000 min
 Exp R.T. : 3.365 min
 Response: 0
 Conc: N.D.

Instrument :
 ECD_L
 ClientSampleId :
 HEXANE



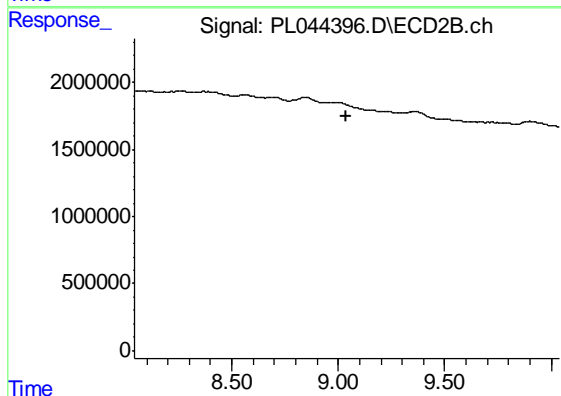
#1 Tetrachloro-m-xylene

R.T.: 0.000 min
 Exp R.T. : 3.985 min
 Response: 0
 Conc: N.D.



#28 Decachlorobiphenyl

R.T.: 0.000 min
 Exp R.T. : 8.048 min
 Response: 0
 Conc: N.D.



#28 Decachlorobiphenyl

R.T.: 0.000 min
 Exp R.T. : 9.039 min
 Response: 0
 Conc: N.D.