

Data Path : Z:\pestpcbsrv\HPCHEM1\ECD_L\Data\PL020419\
 Data File : PL044424.D
 Signal(s) : Signal #1: ECD1A.ch Signal #2: ECD2B.ch
 Acq On : 04 Feb 2019 19:37
 Operator : AJ\SJ
 Sample : K1011-14MSD
 Misc :
 ALS Vial : 27 Sample Multiplier: 1

Instrument :
 ECD_L
ClientSampleId :
 OR-02-013119-AMSD

Manual Integrations
APPROVED
 Sohil
 2/5/2019 10:37:05 AM

Integration File signal 1: autoint1.e
 Integration File signal 2: autoint2.e
 Quant Time: Feb 05 02:34:58 2019
 Quant Method : Z:\pestpcbsrv\HPCHEM1\ECD_L\methods\PL012219.M
 Quant Title : GC Extractables
 QLast Update : Mon Jan 28 01:20:09 2019
 Response via : Initial Calibration
 Integrator: ChemStation

Volume Inj. : 2 µl
 Signal #1 Phase : ZB-MR1 Signal #2 Phase: ZB-MR2
 Signal #1 Info : 30M x 0.32mm x0.5 Signal #2 Info : 30M x 0.32mm x0.25µm

Compound	RT#1	RT#2	Resp#1	Resp#2	ng/ml	ng/ml

System Monitoring Compounds						
1) SA Tetrachlo...	3.367	3.986	138.0E6	49382057	22.770	22.639
28) SA Decachlor...	8.051	9.046	144.4E6	43492127	20.820	19.605
Target Compounds						
2) A alpha-BHC	3.797	4.376	554.6E6	164.0E6	62.154	59.083
3) MA gamma-BHC...	4.075	4.660	512.3E6	152.0E6	63.718	57.479
4) MA Heptachlor	4.363	5.168	517.3E6	152.0E6	65.610	58.565
5) MB Aldrin	4.604	5.473	491.1E6	140.6E6	62.901	55.885
6) B beta-BHC	4.327	4.832	212.5E6	68717507	61.285	58.237
7) B delta-BHC	4.523	5.047	423.5E6	118.5E6	65.152	62.344m
8) B Heptachlor...	5.041	5.859	475.6E6	136.5E6	62.988	59.036
9) A Endosulfan I	5.373	6.215	446.2E6	128.4E6	63.345	55.442
10) B gamma-Chl...	5.264	6.093	487.1E6	140.1E6	62.891	55.518
11) B alpha-Chl...	5.320	6.165	477.6E6	138.7E6	62.680	55.144
12) B 4,4'-DDE	5.488	6.323	444.8E6	123.9E6	65.662	57.734
13) MA Dieldrin	5.613	6.472	486.9E6	134.8E6	64.791	56.260
14) MA Endrin	5.866	6.689	437.2E6	113.3E6	65.197	56.228
15) B Endosulfa...	6.140	6.899	432.1E6	120.7E6	64.051	57.182
16) A 4,4'-DDD	5.999	6.813	389.1E6	107.5E6	70.034	62.712
17) MA 4,4'-DDT	6.235	7.111	345.6E6	95879001	67.797	58.425
18) B Endrin al...	6.308	7.023	357.6E6	103.4E6	63.234	54.225
19) B Endosulfa...	6.519	7.246	385.2E6	109.3E6	67.548	56.843
20) A Methoxychlor	6.780	7.569	188.4E6	56404170	63.548	55.148
21) B Endrin ke...	7.003	7.715	472.5E6	123.4E6	67.867	57.829

(f)=RT Delta > 1/2 Window (#)=Amounts differ by > 25% (m)=manual int.

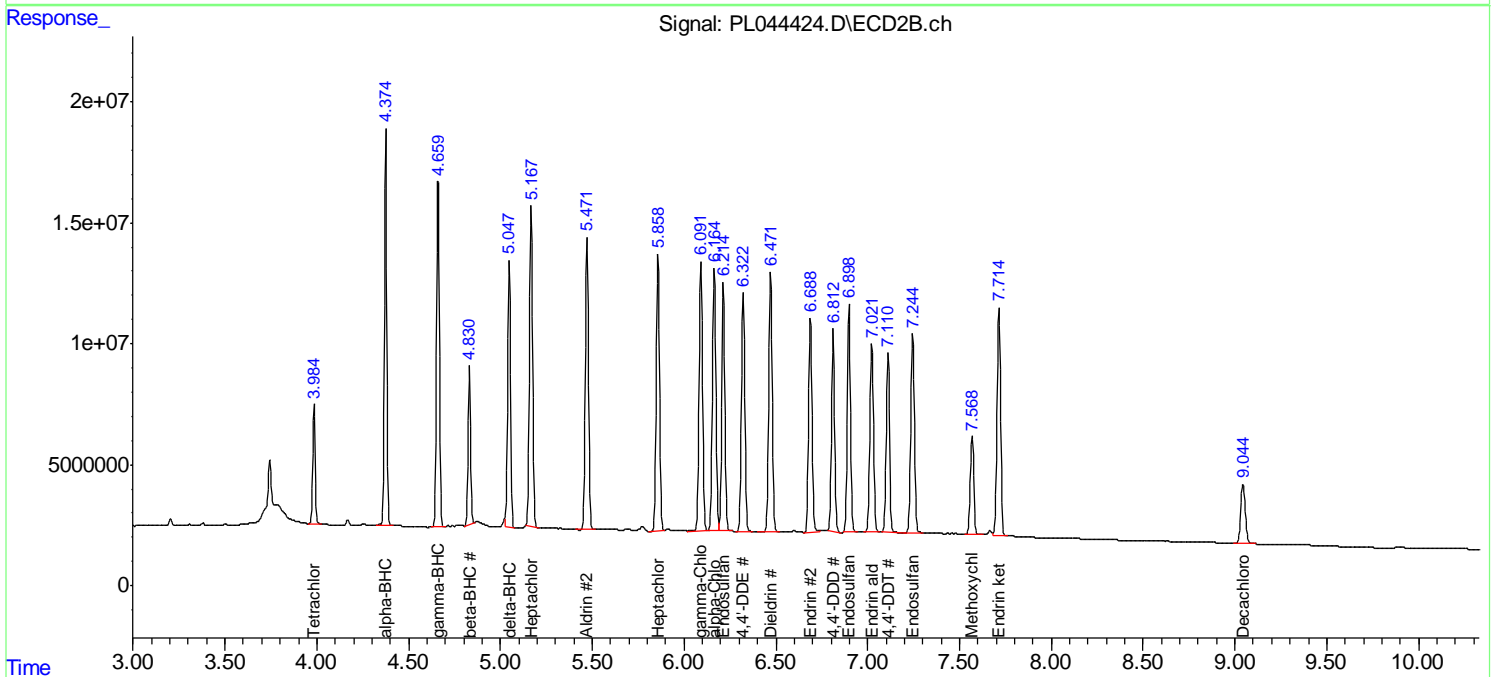
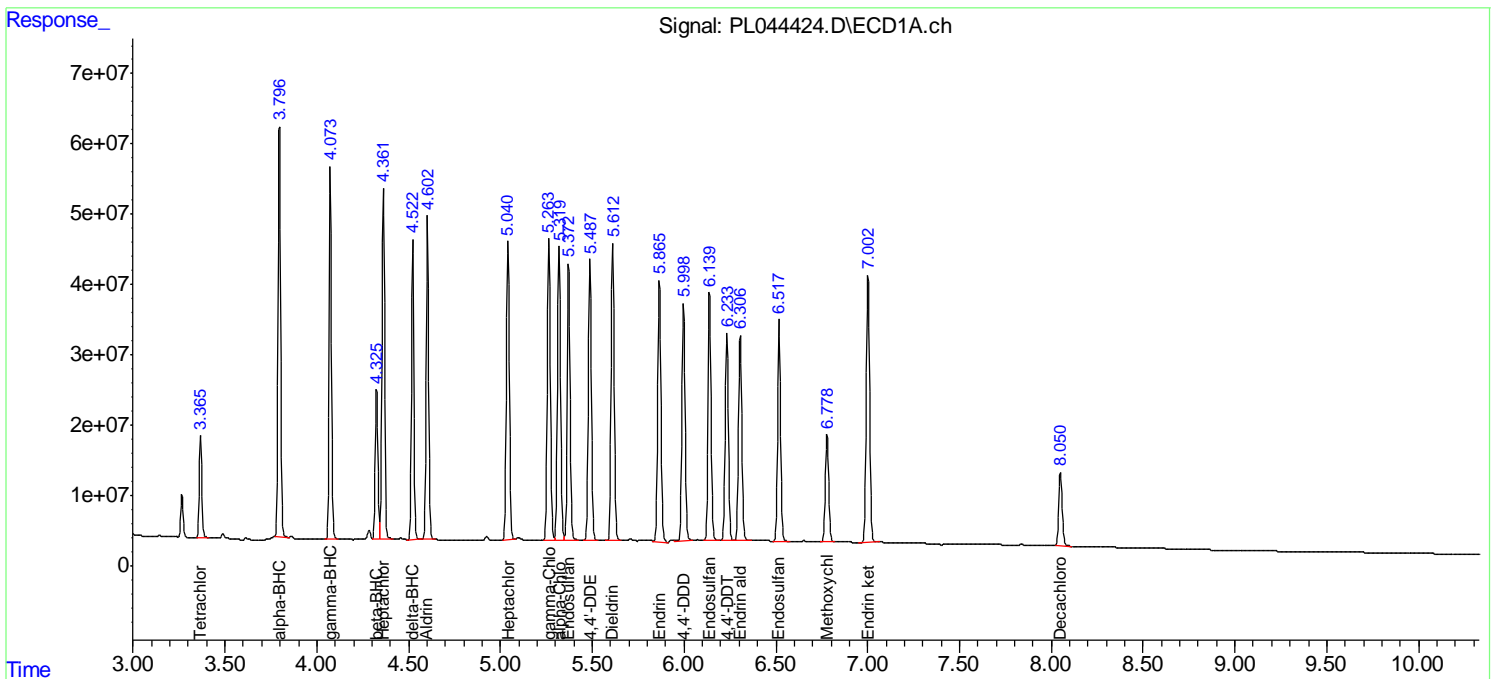
Data Path : Z:\pestpcbsrv\HPCHEM1\ECD_L\Data\PL020419\
Data File : PL044424.D
Signal(s) : Signal #1: ECD1A.ch Signal #2: ECD2B.ch
Acq On : 04 Feb 2019 19:37
Operator : AJ\SJ
Sample : K1011-14MSD
Misc :
ALS Vial : 27 Sample Multiplier: 1

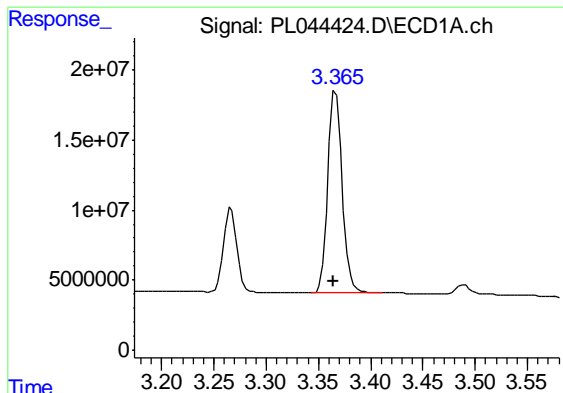
Instrument :
ECD_L
Client Sampled :
OR-02-013119-AMSD

Manual Integrations
APPROVED
Sohil
2/5/2019 10:37:05 AM

Integration File signal 1: autoint1.e
Integration File signal 2: autoint2.e
Quant Time: Feb 05 02:34:58 2019
Quant Method : Z:\pestpcbsrv\HPCHEM1\ECD_L\methods\PL012219.M
Quant Title : GC Extractables
QLast Update : Mon Jan 28 01:20:09 2019
Response via : Initial Calibration
Integrator: ChemStation

Volume Inj. : 2 µl
Signal #1 Phase : ZB-MR1 Signal #2 Phase: ZB-MR2
Signal #1 Info : 30M x 0.32mm x0.5 Signal #2 Info : 30M x 0.32mm x0.25µm





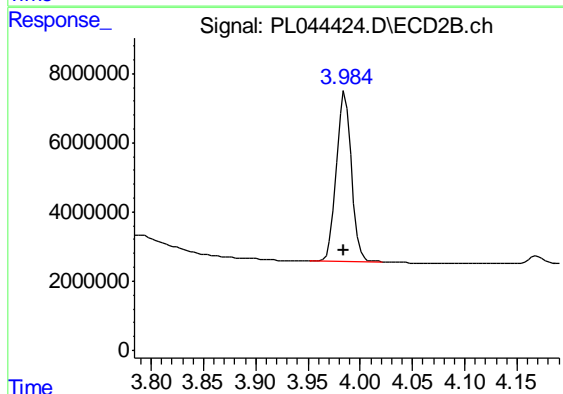
#1 Tetrachloro-m-xylene

R.T.: 3.367 min
 Delta R.T.: 0.002 min
 Response: 137995118
 Conc: 22.77 ng/ml

Instrument :
 ECD_L
 ClientSampleId :
 OR-02-013119-AMSD

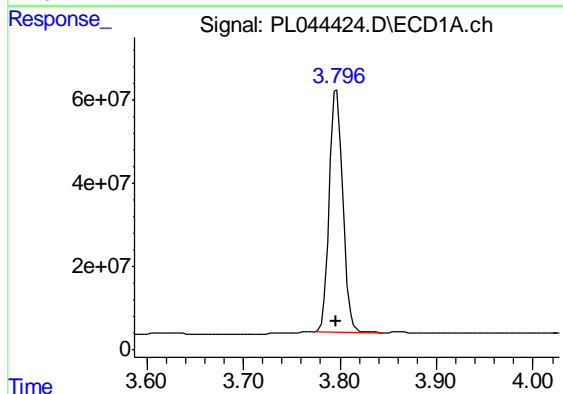
Manual Integrations
 APPROVED

Sohil
 2/5/2019 10:37:05 AM



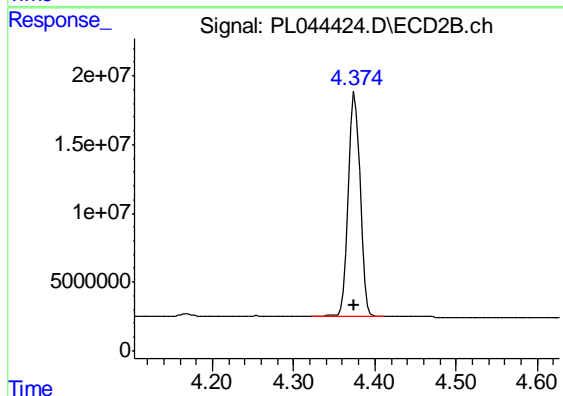
#1 Tetrachloro-m-xylene

R.T.: 3.986 min
 Delta R.T.: 0.000 min
 Response: 49382057
 Conc: 22.64 ng/ml



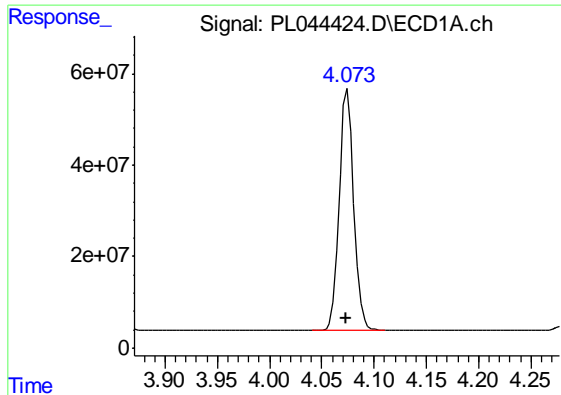
#2 alpha-BHC

R.T.: 3.797 min
 Delta R.T.: 0.001 min
 Response: 554631214
 Conc: 62.15 ng/ml



#2 alpha-BHC

R.T.: 4.376 min
 Delta R.T.: 0.001 min
 Response: 163984991
 Conc: 59.08 ng/ml



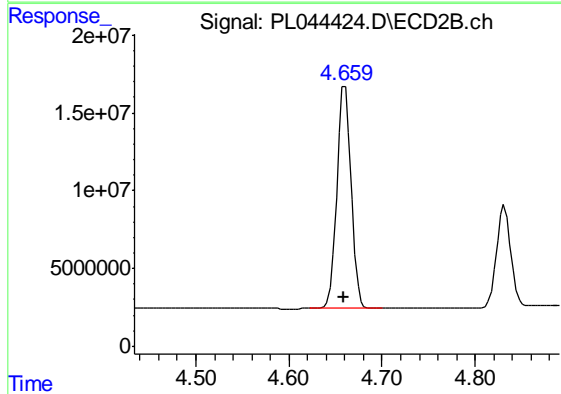
#3 gamma-BHC (Lindane)

R.T.: 4.075 min
 Delta R.T.: 0.002 min
 Response: 512330591
 Conc: 63.72 ng/ml

Instrument :
 ECD_L
 ClientSampleId :
 OR-02-013119-AMSD

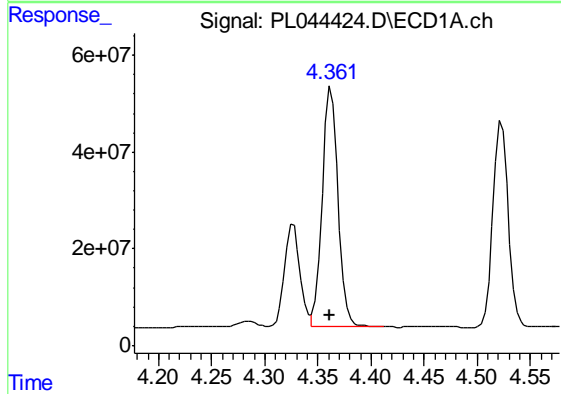
Manual Integrations
 APPROVED

Sohil
 2/5/2019 10:37:05 AM



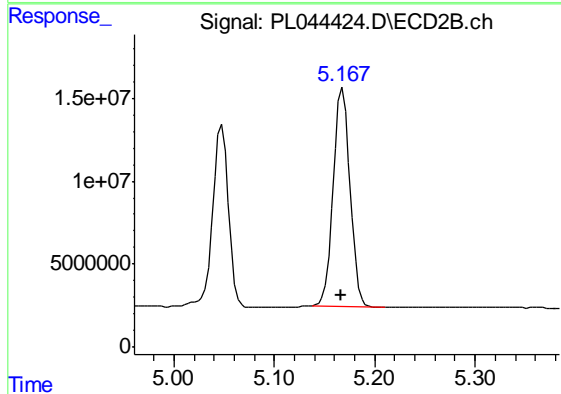
#3 gamma-BHC (Lindane)

R.T.: 4.660 min
 Delta R.T.: 0.001 min
 Response: 151964955
 Conc: 57.48 ng/ml



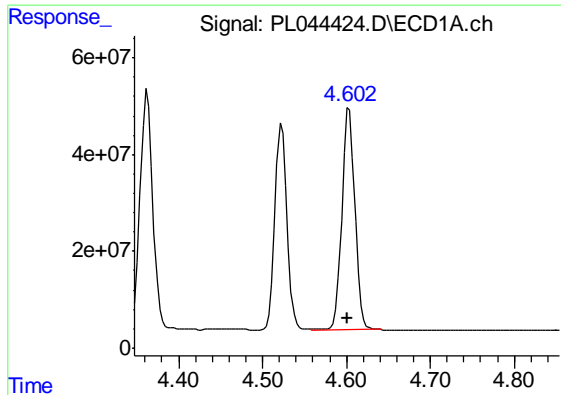
#4 Heptachlor

R.T.: 4.363 min
 Delta R.T.: 0.002 min
 Response: 517254237
 Conc: 65.61 ng/ml



#4 Heptachlor

R.T.: 5.168 min
 Delta R.T.: 0.002 min
 Response: 151974895
 Conc: 58.57 ng/ml



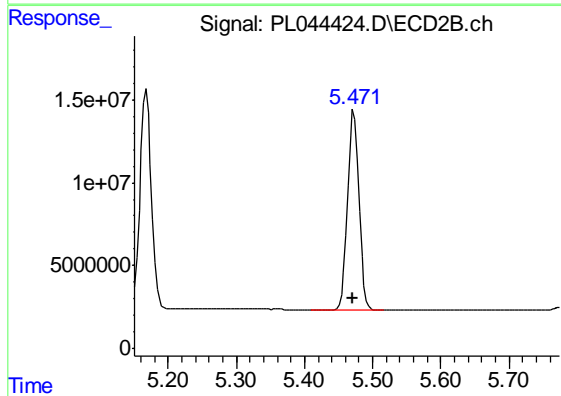
#5 Aldrin

R.T.: 4.604 min
 Delta R.T.: 0.002 min
 Response: 491125349
 Conc: 62.90 ng/ml

Instrument :
 ECD_L
 ClientSampleId :
 OR-02-013119-AMSD

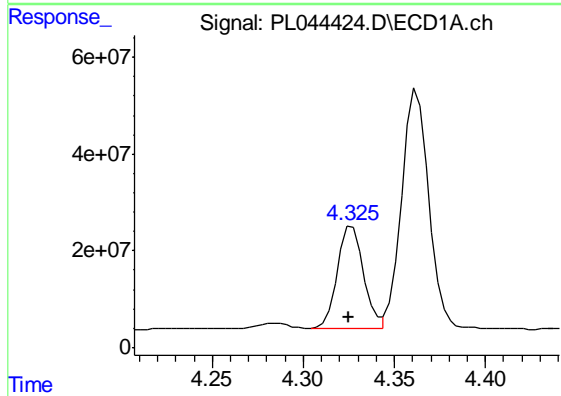
Manual Integrations
 APPROVED

Sohil
 2/5/2019 10:37:05 AM



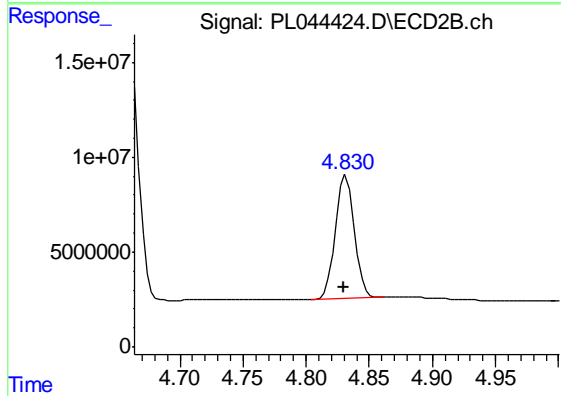
#5 Aldrin

R.T.: 5.473 min
 Delta R.T.: 0.002 min
 Response: 140606517
 Conc: 55.89 ng/ml



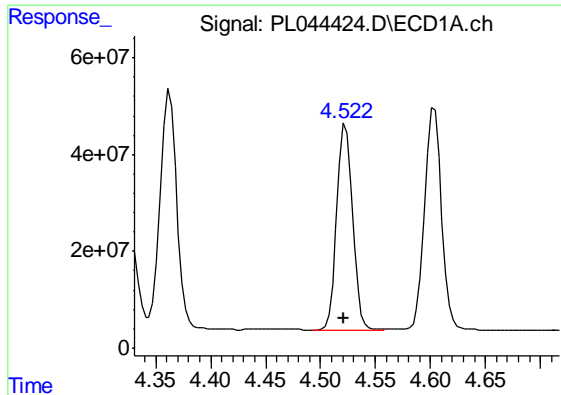
#6 beta-BHC

R.T.: 4.327 min
 Delta R.T.: 0.002 min
 Response: 212468751
 Conc: 61.28 ng/ml



#6 beta-BHC

R.T.: 4.832 min
 Delta R.T.: 0.002 min
 Response: 68717507
 Conc: 58.24 ng/ml



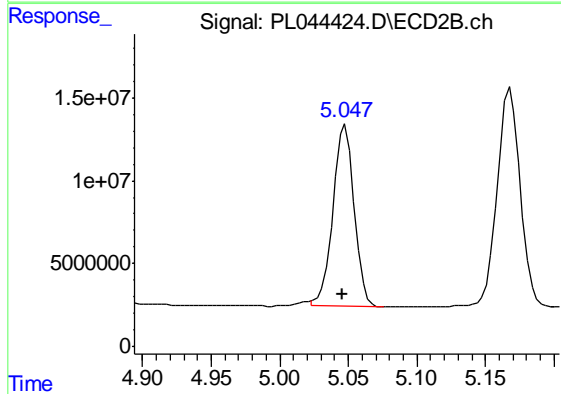
#7 delta-BHC

R.T.: 4.523 min
 Delta R.T.: 0.002 min
 Response: 423471705
 Conc: 65.15 ng/ml

Instrument :
 ECD_L
 ClientSampleId :
 OR-02-013119-AMSD

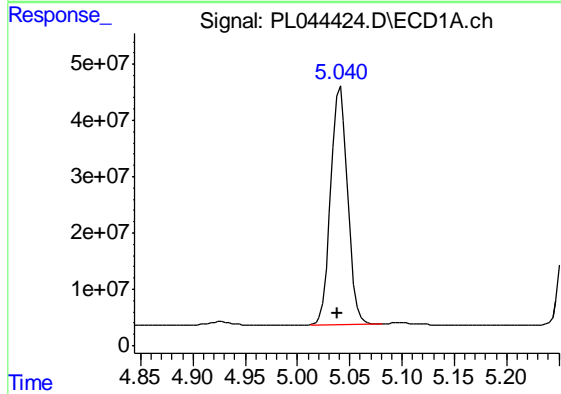
Manual Integrations
 APPROVED

Sohil
 2/5/2019 10:37:05 AM



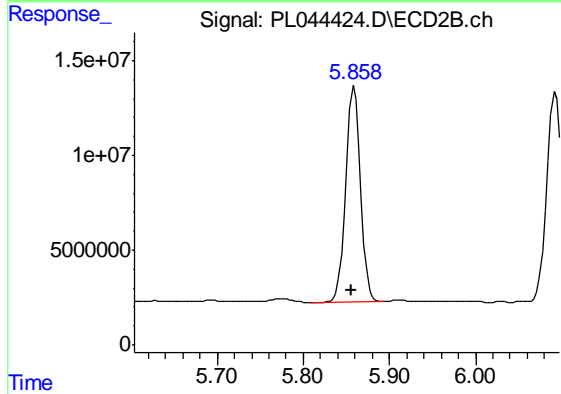
#7 delta-BHC

R.T.: 5.047 min
 Delta R.T.: 0.000 min
 Response: 118509064
 Conc: 62.34 ng/ml m



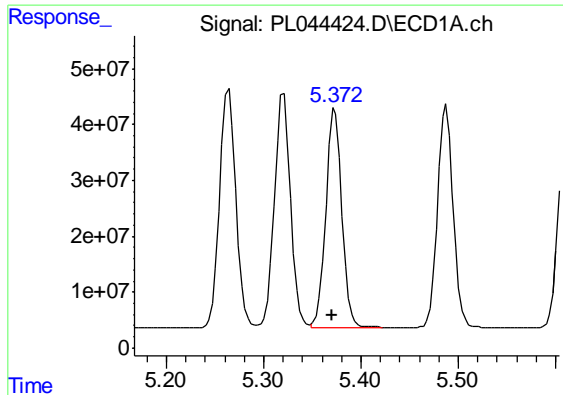
#8 Heptachlor epoxide

R.T.: 5.041 min
 Delta R.T.: 0.002 min
 Response: 475576484
 Conc: 62.99 ng/ml



#8 Heptachlor epoxide

R.T.: 5.859 min
 Delta R.T.: 0.003 min
 Response: 136539425
 Conc: 59.04 ng/ml



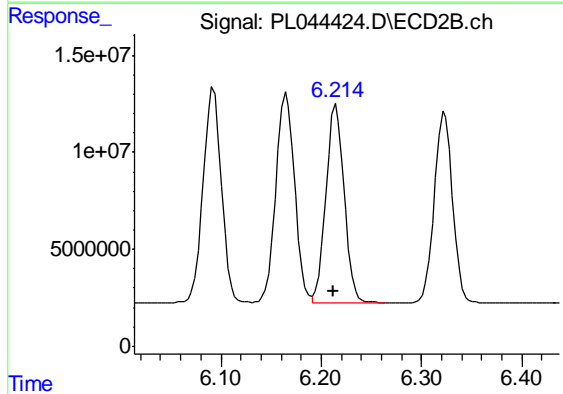
#9 Endosulfan I

R.T.: 5.373 min
 Delta R.T.: 0.003 min
 Response: 446237587
 Conc: 63.34 ng/ml

Instrument :
 ECD_L
 ClientSampleId :
 OR-02-013119-AMSD

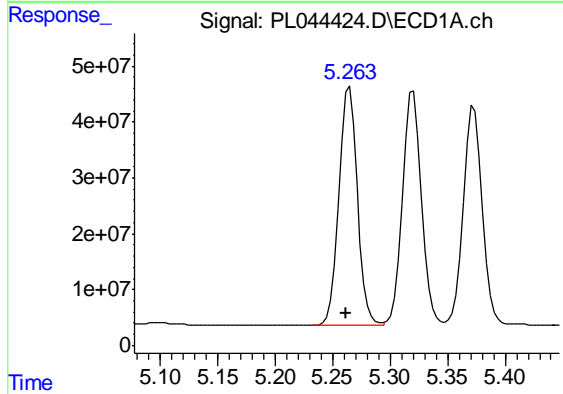
Manual Integrations
 APPROVED

Sohil
 2/5/2019 10:37:05 AM



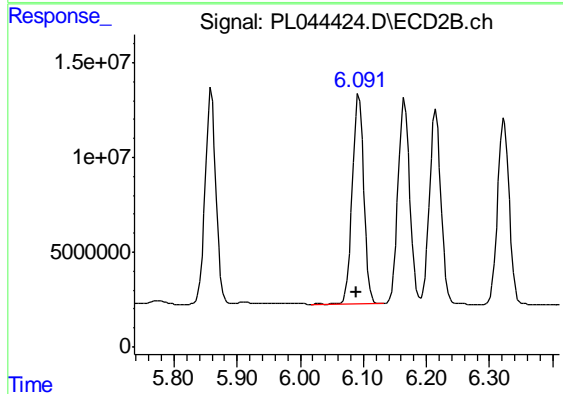
#9 Endosulfan I

R.T.: 6.215 min
 Delta R.T.: 0.003 min
 Response: 128356201
 Conc: 55.44 ng/ml



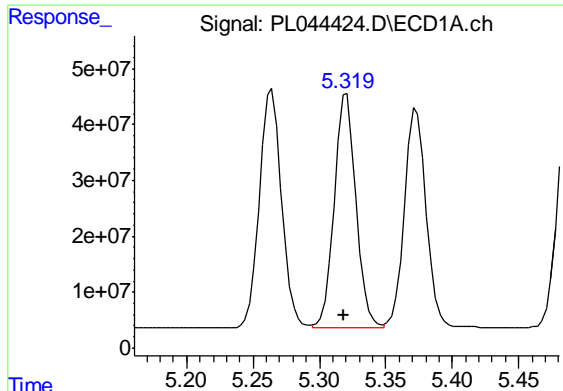
#10 gamma-Chlordane

R.T.: 5.264 min
 Delta R.T.: 0.002 min
 Response: 487125349
 Conc: 62.89 ng/ml



#10 gamma-Chlordane

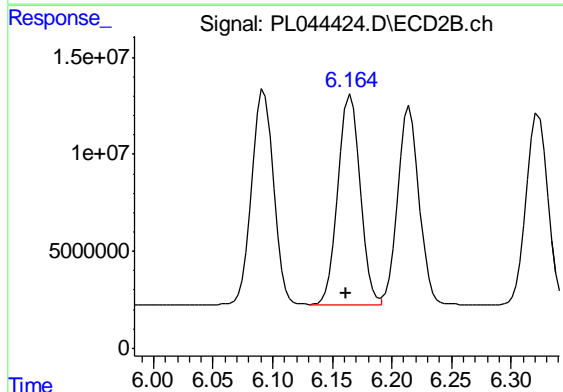
R.T.: 6.093 min
 Delta R.T.: 0.003 min
 Response: 140091940
 Conc: 55.52 ng/ml



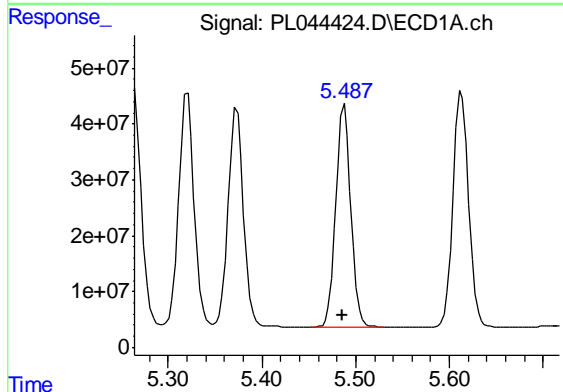
#11 alpha-Chlordane
 R.T.: 5.320 min
 Delta R.T.: 0.002 min
 Response: 477636416
 Conc: 62.68 ng/ml

Instrument :
 ECD_L
 ClientSampleId :
 OR-02-013119-AMSD

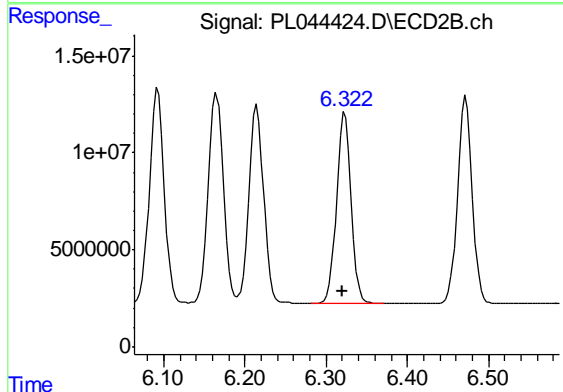
Manual Integrations
 APPROVED
 Sohil
 2/5/2019 10:37:05 AM



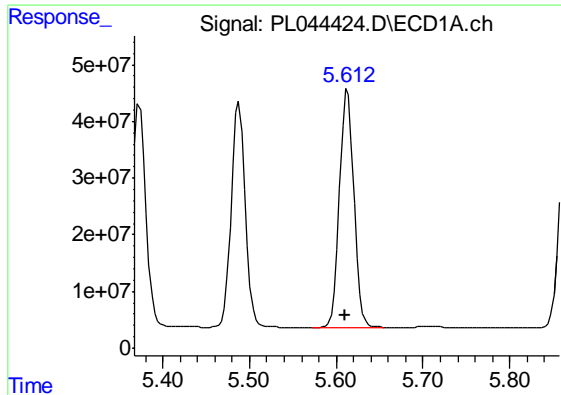
#11 alpha-Chlordane
 R.T.: 6.165 min
 Delta R.T.: 0.003 min
 Response: 138740488
 Conc: 55.14 ng/ml



#12 4,4'-DDE
 R.T.: 5.488 min
 Delta R.T.: 0.002 min
 Response: 444763925
 Conc: 65.66 ng/ml



#12 4,4'-DDE
 R.T.: 6.323 min
 Delta R.T.: 0.003 min
 Response: 123904231
 Conc: 57.73 ng/ml



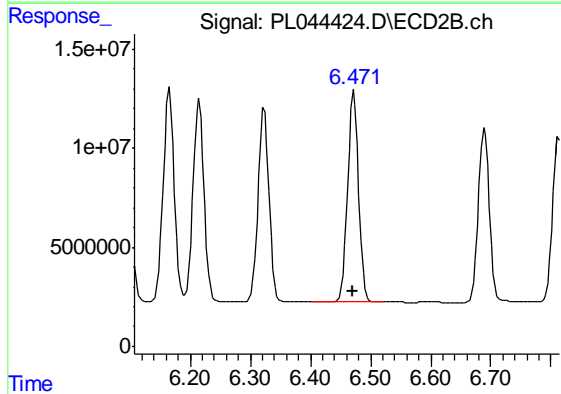
#13 Dieldrin

R.T.: 5.613 min
 Delta R.T.: 0.002 min
 Response: 486908104
 Conc: 64.79 ng/ml

Instrument :
 ECD_L
 ClientSampled :
 OR-02-013119-AMSD

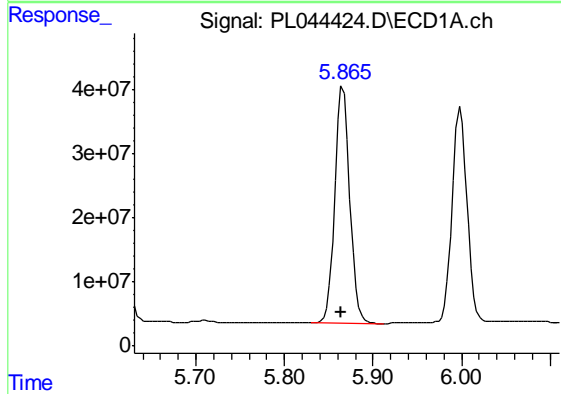
Manual Integrations
 APPROVED

Sohil
 2/5/2019 10:37:05 AM



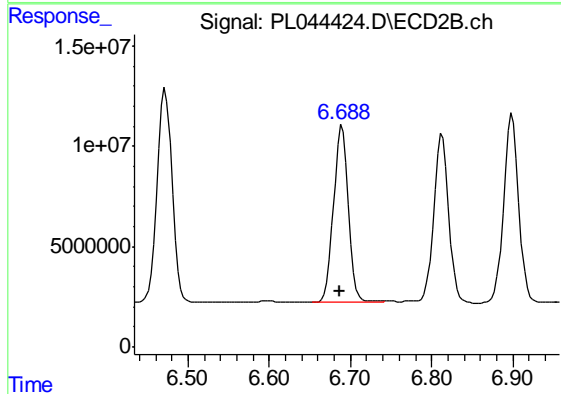
#13 Dieldrin

R.T.: 6.472 min
 Delta R.T.: 0.003 min
 Response: 134795078
 Conc: 56.26 ng/ml



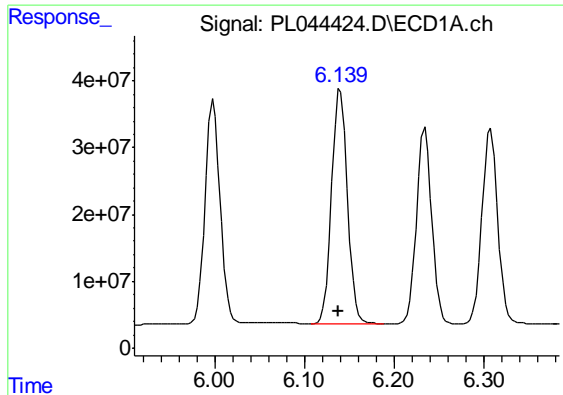
#14 Endrin

R.T.: 5.866 min
 Delta R.T.: 0.002 min
 Response: 437193736
 Conc: 65.20 ng/ml



#14 Endrin

R.T.: 6.689 min
 Delta R.T.: 0.003 min
 Response: 113314383
 Conc: 56.23 ng/ml



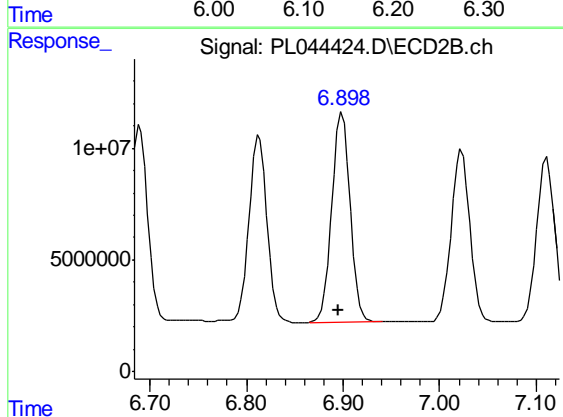
#15 Endosulfan II

R.T.: 6.140 min
 Delta R.T.: 0.002 min
 Response: 432123855
 Conc: 64.05 ng/ml

Instrument :
 ECD_L
 ClientSampleId :
 OR-02-013119-AMSD

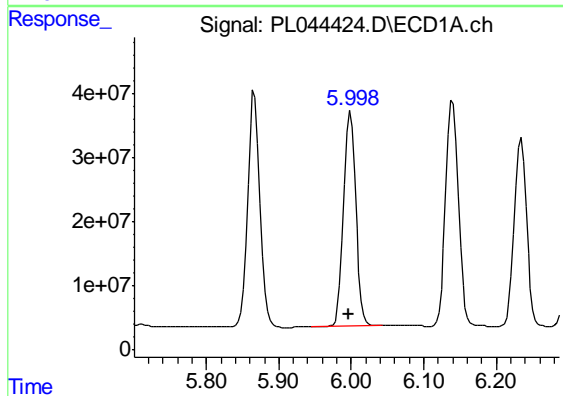
Manual Integrations
 APPROVED

Sohil
 2/5/2019 10:37:05 AM



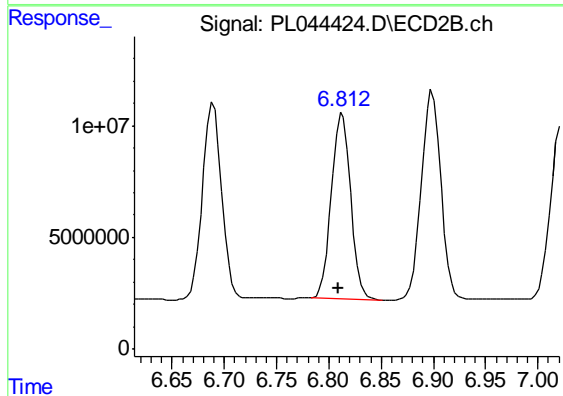
#15 Endosulfan II

R.T.: 6.899 min
 Delta R.T.: 0.004 min
 Response: 120747469
 Conc: 57.18 ng/ml



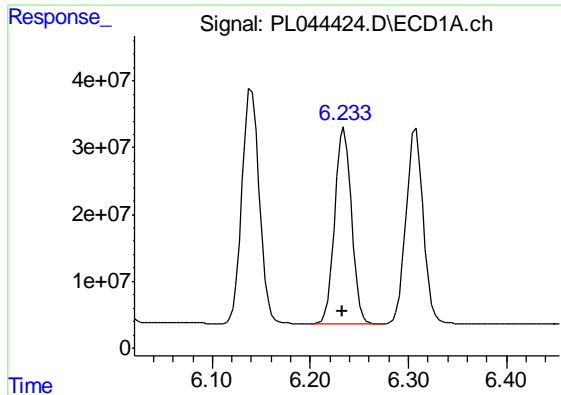
#16 4,4'-DDD

R.T.: 5.999 min
 Delta R.T.: 0.002 min
 Response: 389116538
 Conc: 70.03 ng/ml



#16 4,4'-DDD

R.T.: 6.813 min
 Delta R.T.: 0.004 min
 Response: 107544583
 Conc: 62.71 ng/ml



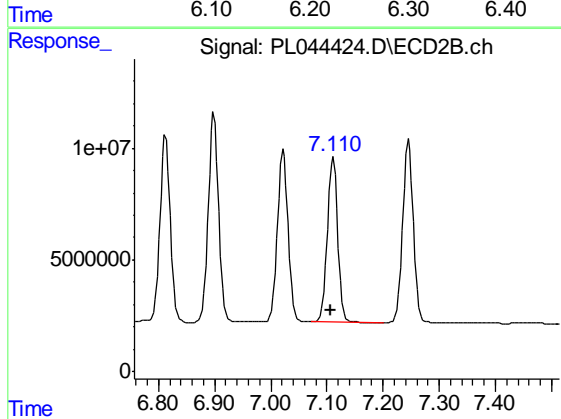
#17 4,4'-DDT

R.T.: 6.235 min
Delta R.T.: 0.002 min
Response: 345630228
Conc: 67.80 ng/ml

Instrument :
ECD_L
ClientSampleId :
OR-02-013119-AMSD

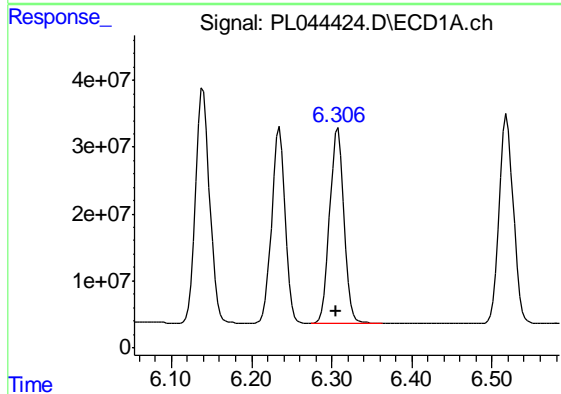
Manual Integrations
APPROVED

Sohil
2/5/2019 10:37:05 AM



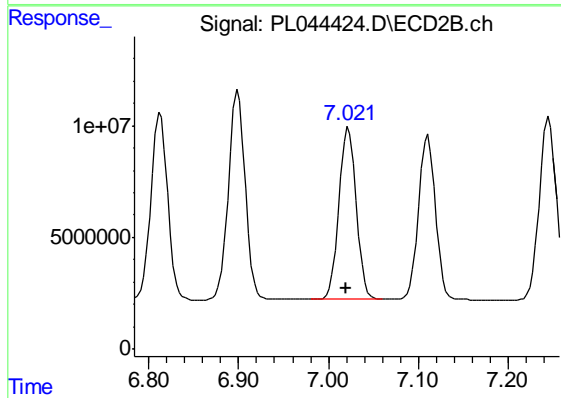
#17 4,4'-DDT

R.T.: 7.111 min
Delta R.T.: 0.004 min
Response: 95879001
Conc: 58.42 ng/ml



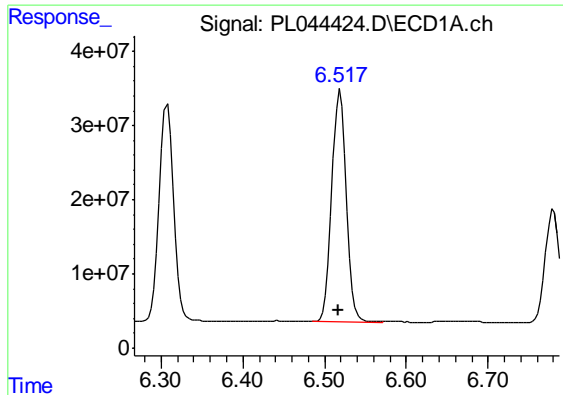
#18 Endrin aldehyde

R.T.: 6.308 min
Delta R.T.: 0.003 min
Response: 357575361
Conc: 63.23 ng/ml



#18 Endrin aldehyde

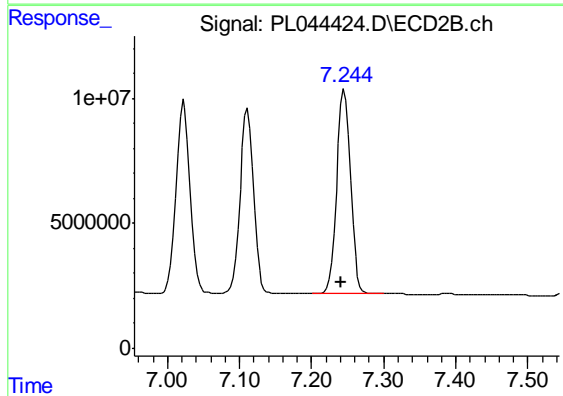
R.T.: 7.023 min
Delta R.T.: 0.003 min
Response: 103434653
Conc: 54.23 ng/ml



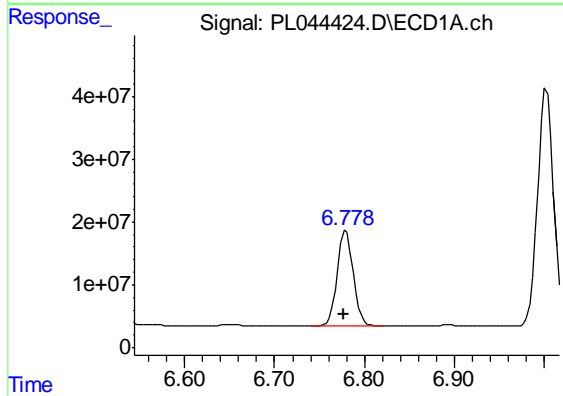
#19 Endosulfan Sulfate
 R.T.: 6.519 min
 Delta R.T.: 0.002 min
 Response: 385221627
 Conc: 67.55 ng/ml

Instrument :
 ECD_L
ClientSampleId :
 OR-02-013119-AMSD

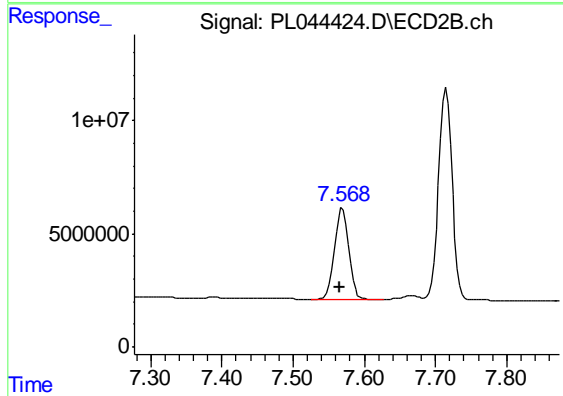
Manual Integrations
APPROVED
 Sohil
 2/5/2019 10:37:05 AM



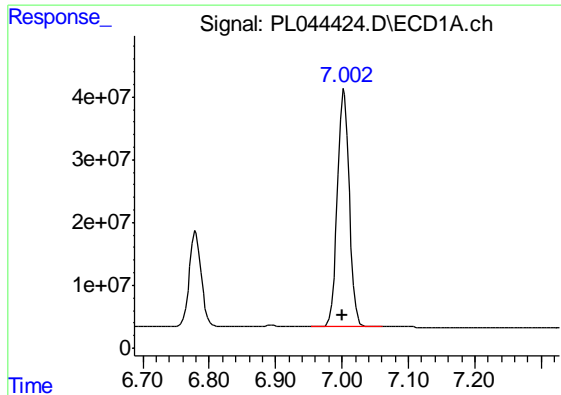
#19 Endosulfan Sulfate
 R.T.: 7.246 min
 Delta R.T.: 0.004 min
 Response: 109299936
 Conc: 56.84 ng/ml



#20 Methoxychlor
 R.T.: 6.780 min
 Delta R.T.: 0.003 min
 Response: 188444569
 Conc: 63.55 ng/ml



#20 Methoxychlor
 R.T.: 7.569 min
 Delta R.T.: 0.004 min
 Response: 56404170
 Conc: 55.15 ng/ml



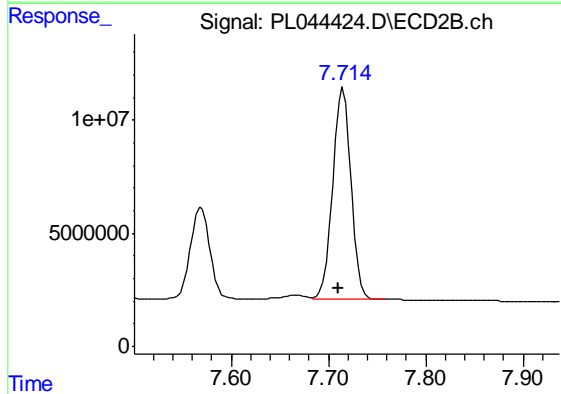
#21 Endrin ketone

R.T.: 7.003 min
 Delta R.T.: 0.003 min
 Response: 472473429
 Conc: 67.87 ng/ml

Instrument :
 ECD_L
 ClientSampleId :
 OR-02-013119-AMSD

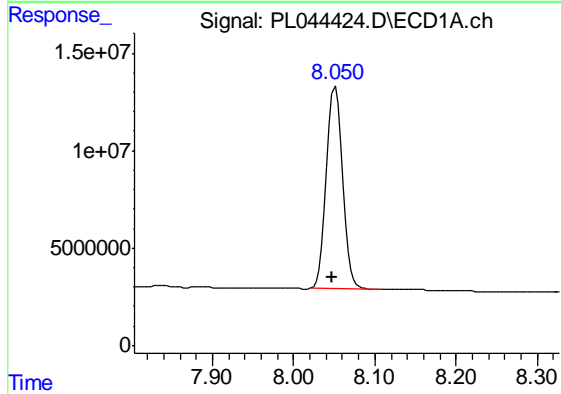
Manual Integrations
 APPROVED

Sohil
 2/5/2019 10:37:05 AM



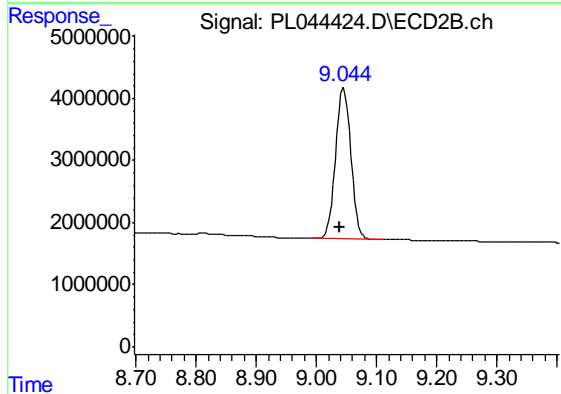
#21 Endrin ketone

R.T.: 7.715 min
 Delta R.T.: 0.004 min
 Response: 123388704
 Conc: 57.83 ng/ml



#28 Decachlorobiphenyl

R.T.: 8.051 min
 Delta R.T.: 0.004 min
 Response: 144386996
 Conc: 20.82 ng/ml



#28 Decachlorobiphenyl

R.T.: 9.046 min
 Delta R.T.: 0.006 min
 Response: 43492127
 Conc: 19.61 ng/ml