

Data Path : Z:\pestpcbsrv\HPCHEM1\ECD\_L\Data\PL020422\  
 Data File : PL072454.D  
 Signal(s) : Signal #1: ECD1A.ch Signal #2: ECD2B.ch  
 Acq On : 04 Feb 2022 18:03  
 Operator : AR\AJ  
 Sample : N1399-01  
 Misc :  
 ALS Vial : 20 Sample Multiplier: 1

Instrument :  
 ECD\_L  
 ClientSampleId :

Integration File signal 1: autoint1.e  
 Integration File signal 2: autoint2.e  
 Quant Time: Feb 05 01:33:03 2022  
 Quant Method : Z:\pestpcbsrv\HPCHEM1\ECD\_L\methods\PL011722.M  
 Quant Title : GC Extractables  
 QLast Update : Tue Jan 18 10:53:59 2022  
 Response via : Initial Calibration  
 Integrator: ChemStation

Volume Inj. : 1 µl  
 Signal #1 Phase : ZB-MR2 Signal #2 Phase: ZB-MR1  
 Signal #1 Info : 30M x 0.32mm x0.2 Signal #2 Info : 30M x 0.32mm x0.5µm

	Compound	RT#1	RT#2	Resp#1	Resp#2	ng/ml	ng/ml
-----							
System Monitoring Compounds							
1)	SA Tetrachlo...	4.557	5.492	8665104	25193947	15.608	15.512
28)	SA Decachlor...	10.318	11.385	8634962	17718576	9.719	10.981
Target Compounds							
2)	A alpha-BHC	5.280f	0.000	501597	0	0.649	N.D. #
4)	MA Heptachlor	6.113f	0.000	694925	0	0.806	N.D. #
5)	MB Aldrin	6.415	7.489	517206	1332676	0.655	0.603
6)	B beta-BHC	6.071	6.727	206431	895118	0.624	0.904 #
7)	B delta-BHC	0.000	7.015f	0	5613938	N.D.	2.282 #
9)	A Endosulfan I	7.395	8.368	163398	103120	0.230	0.057 #
10)	B gamma-Chl...	0.000	8.222	0	918298	N.D.	0.454 #
11)	B alpha-Chl...	7.342	8.301	225967	129150	0.288	0.065 #
12)	B 4,4'-DDE	0.000	8.484f	0	336066	N.D.	0.178 #
13)	MA Dieldrin	0.000	8.649	0	234999	N.D.	0.120 #
14)	MA Endrin	0.000	8.874f	0	459698	N.D.	0.277 #
15)	B Endosulfa...	0.000	9.145f	0	780341	N.D.	0.455 #
16)	A 4,4'-DDD	0.000	9.023f	0	2542185	N.D.	1.778 #
17)	MA 4,4'-DDT	8.431f	9.378f	212937	423568	0.321	0.268
18)	B Endrin al...	0.000	9.262	0	1779	N.D.	0.001 #
20)	A Methoxychlor	9.010	9.849	163041	1450941	0.386	1.752 #
23)	Chlordane-1	5.901f	6.891f	951594	1077508	46.132	16.511 #
24)	Chlordane-2	6.566	7.489f	126025	1332676	4.576	19.067 #
25)	Chlordane-3	0.000	8.222	0	918298	N.D.	3.305 #
26)	Chlordane-4	7.342	8.301	225967	129150	2.739	0.389 #

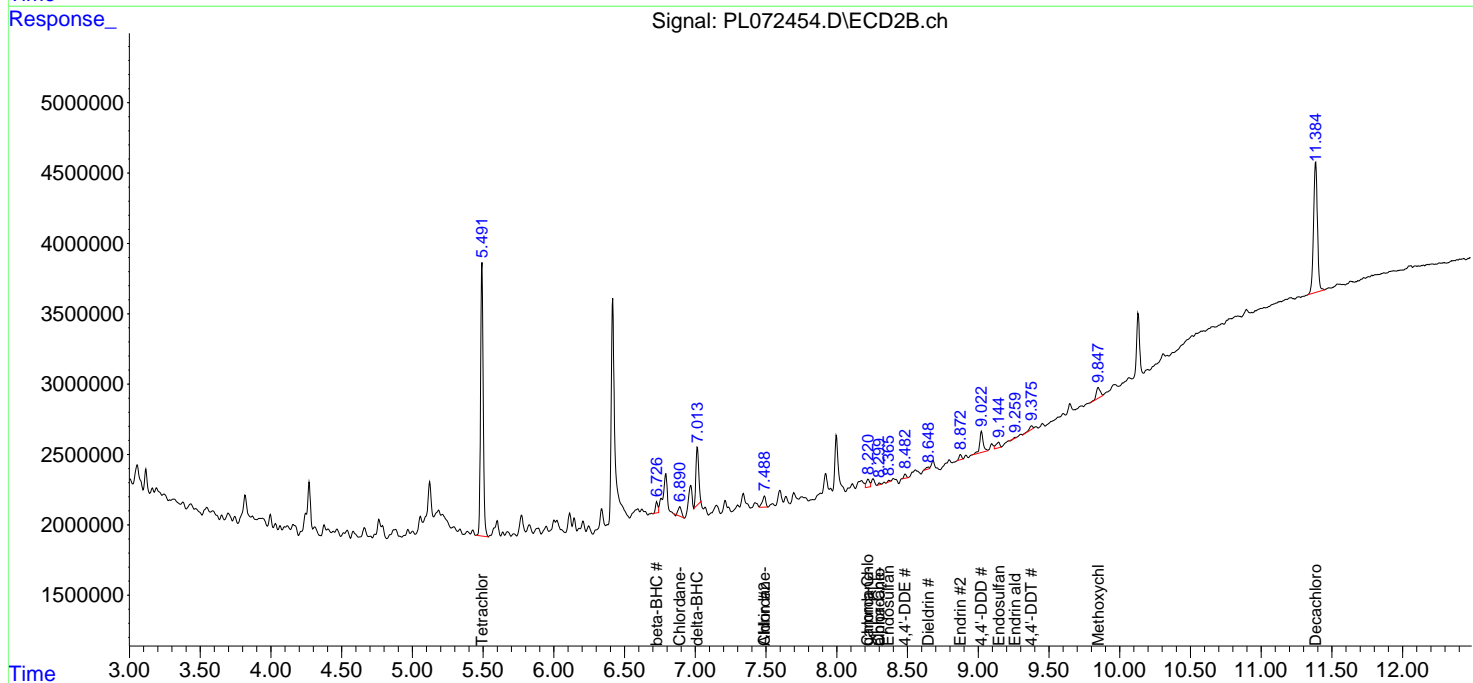
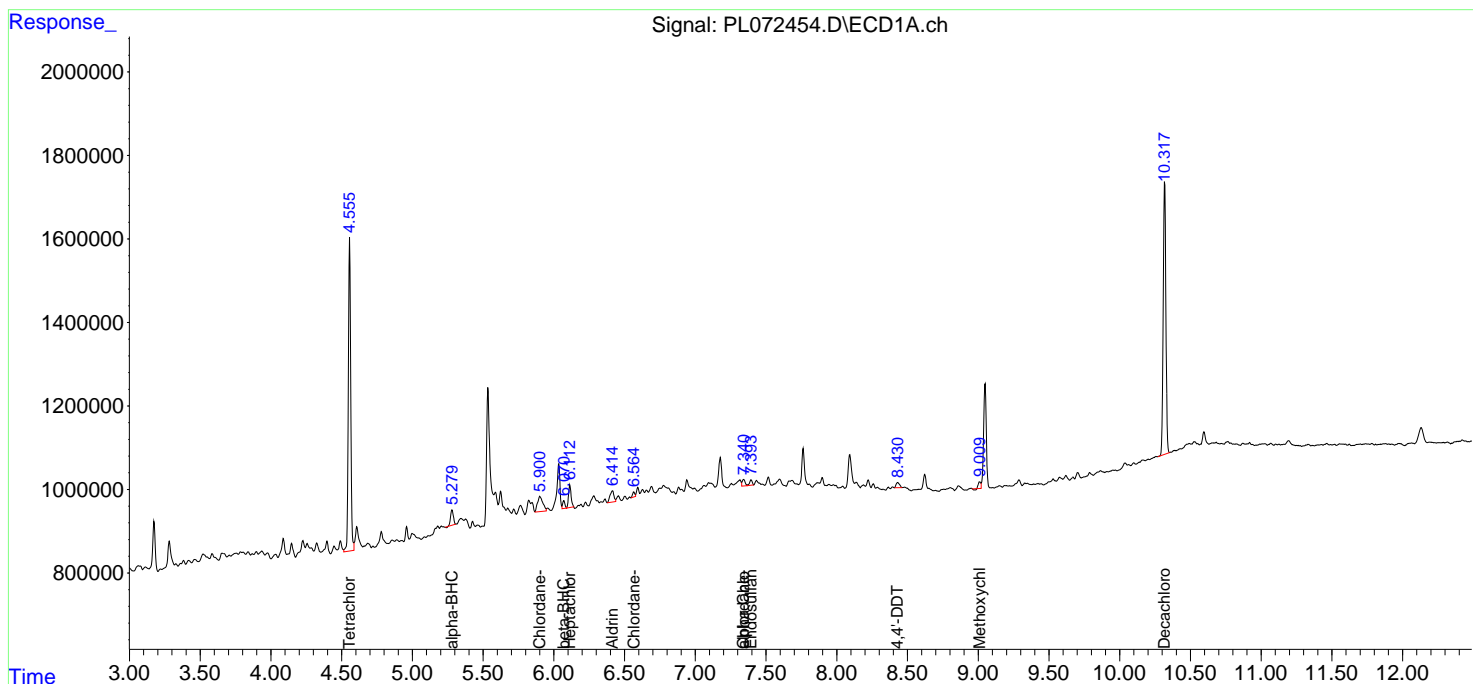
(f)=RT Delta > 1/2 Window (#)=Amounts differ by > 25% (m)=manual int.

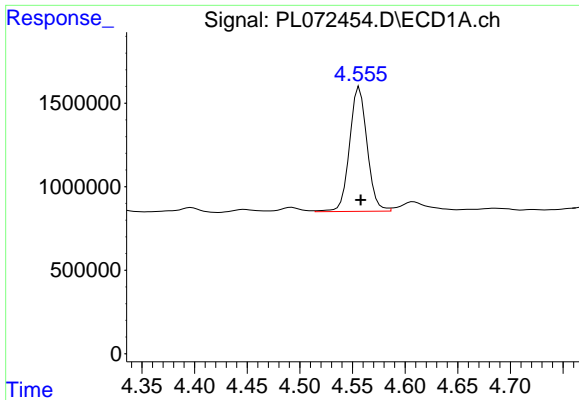
Data Path : Z:\pestpcbsrv\HPCHEM1\ECD\_L\Data\PL072454\  
 Data File : PL072454.D  
 Signal(s) : Signal #1: ECD1A.ch Signal #2: ECD2B.ch  
 Acq On : 04 Feb 2022 18:03  
 Operator : AR\AJ  
 Sample : N1399-01  
 Misc :  
 ALS Vial : 20 Sample Multiplier: 1

Instrument :  
 ECD\_L  
 ClientSampleId :

Integration File signal 1: autoint1.e  
 Integration File signal 2: autoint2.e  
 Quant Time: Feb 05 01:33:03 2022  
 Quant Method : Z:\pestpcbsrv\HPCHEM1\ECD\_L\methods\PL011722.M  
 Quant Title : GC Extractables  
 QLast Update : Tue Jan 18 10:53:59 2022  
 Response via : Initial Calibration  
 Integrator: ChemStation

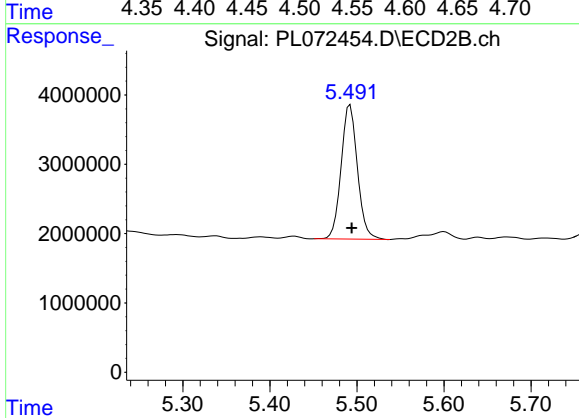
Volume Inj. : 1 µl  
 Signal #1 Phase : ZB-MR2 Signal #2 Phase: ZB-MR1  
 Signal #1 Info : 30M x 0.32mm x0.2 Signal #2 Info : 30M x 0.32mm x0.5µm



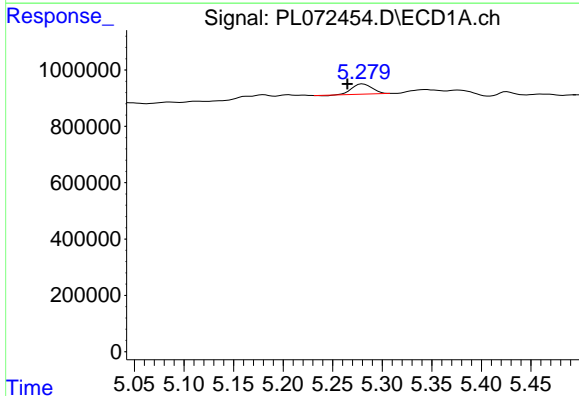


#1 Tetrachloro-m-xylene  
 R.T.: 4.557 min  
 Delta R.T.: -0.001 min  
 Response: 8665104  
 Conc: 15.61 ng/ml

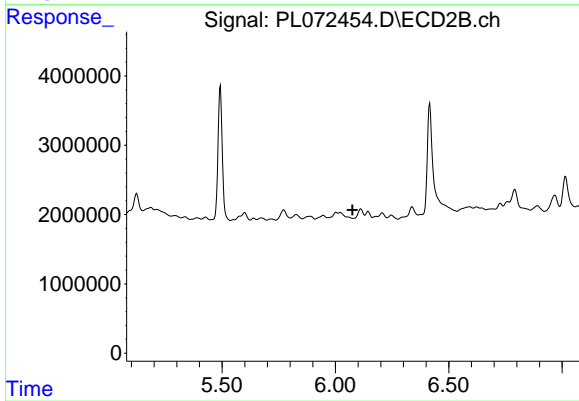
Instrument :  
 ECD\_L  
 ClientSampleId :



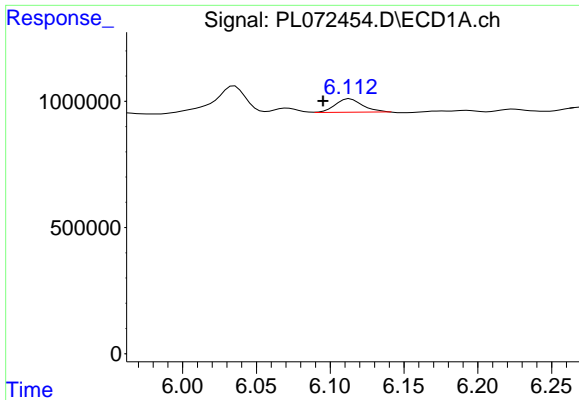
#1 Tetrachloro-m-xylene  
 R.T.: 5.492 min  
 Delta R.T.: -0.002 min  
 Response: 25193947  
 Conc: 15.51 ng/ml



#2 alpha-BHC  
 R.T.: 5.280 min  
 Delta R.T.: 0.016 min  
 Response: 501597  
 Conc: 0.65 ng/ml



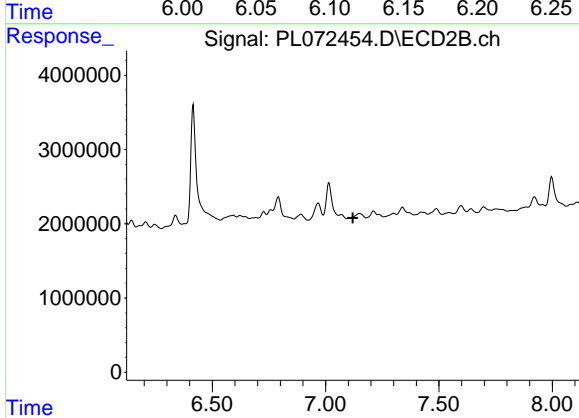
#2 alpha-BHC  
 R.T.: 0.000 min  
 Exp R.T. : 6.076 min  
 Response: 0  
 Conc: N.D.



#4 Heptachlor

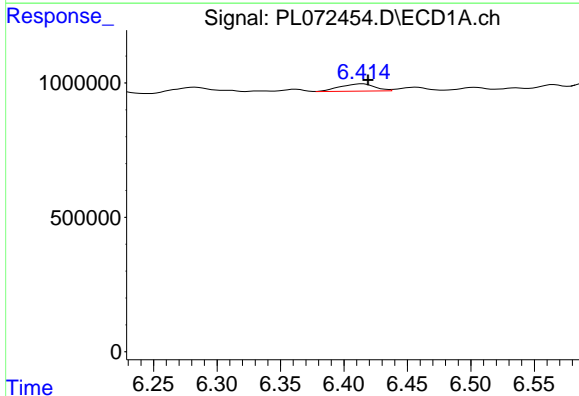
R.T.: 6.113 min  
 Delta R.T.: 0.018 min  
 Response: 694925  
 Conc: 0.81 ng/ml

Instrument :  
 ECD\_L  
 ClientSampleId :



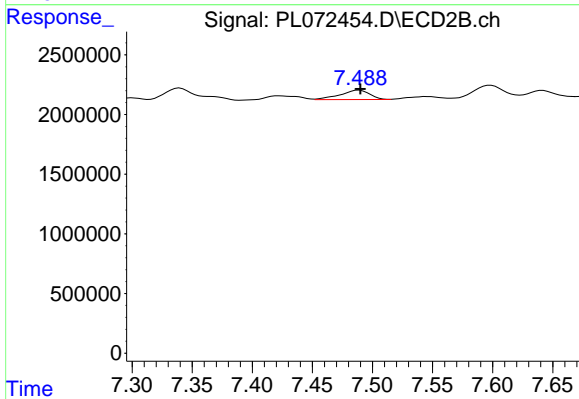
#4 Heptachlor

R.T.: 0.000 min  
 Exp R.T. : 7.120 min  
 Response: 0  
 Conc: N.D.



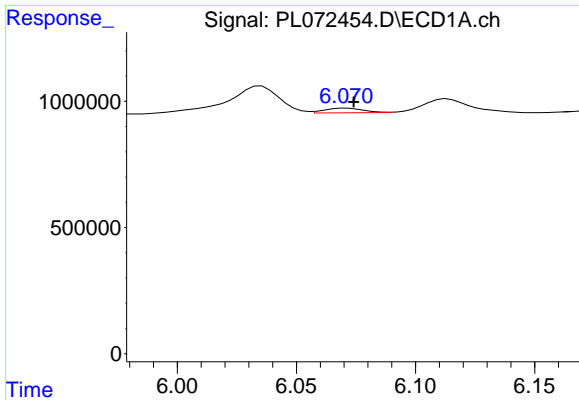
#5 Aldrin

R.T.: 6.415 min  
 Delta R.T.: -0.004 min  
 Response: 517206  
 Conc: 0.65 ng/ml



#5 Aldrin

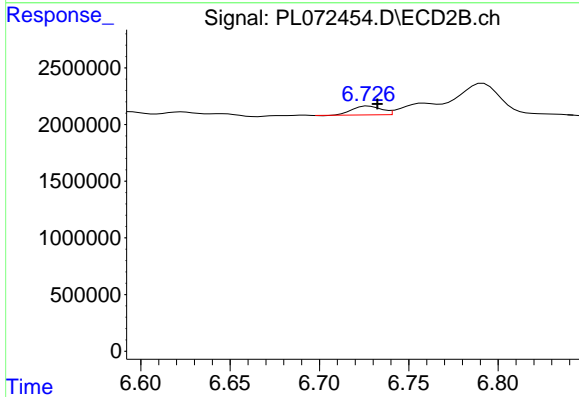
R.T.: 7.489 min  
 Delta R.T.: 0.000 min  
 Response: 1332676  
 Conc: 0.60 ng/ml



#6 beta-BHC

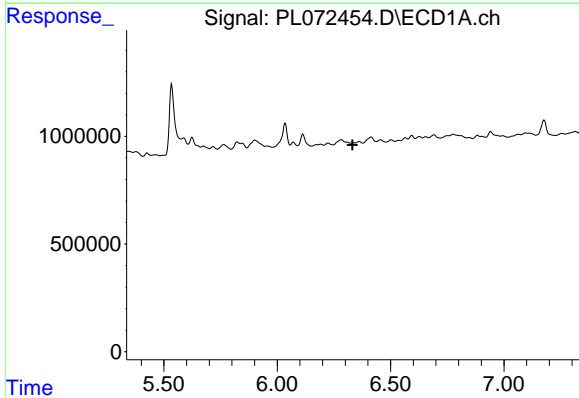
R.T.: 6.071 min  
 Delta R.T.: -0.003 min  
 Response: 206431  
 Conc: 0.62 ng/ml

Instrument :  
 ECD\_L  
 ClientSampleId :



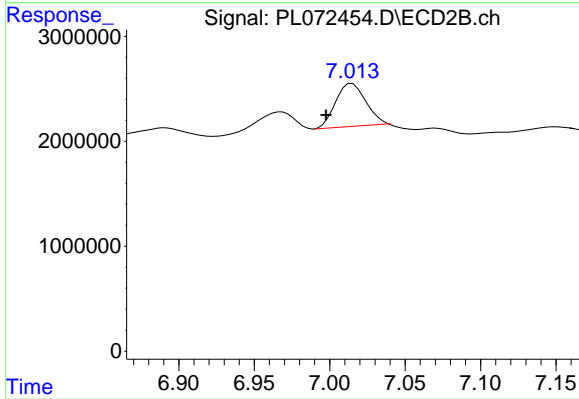
#6 beta-BHC

R.T.: 6.727 min  
 Delta R.T.: -0.005 min  
 Response: 895118  
 Conc: 0.90 ng/ml



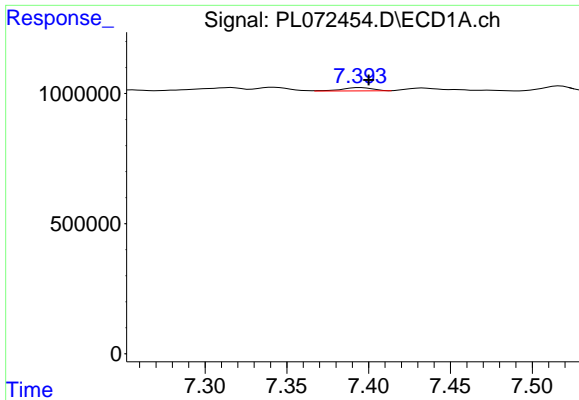
#7 delta-BHC

R.T.: 0.000 min  
 Exp R.T. : 6.332 min  
 Response: 0  
 Conc: N.D.



#7 delta-BHC

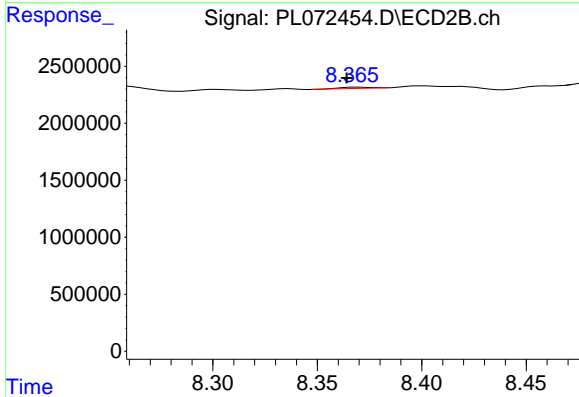
R.T.: 7.015 min  
 Delta R.T.: 0.017 min  
 Response: 5613938  
 Conc: 2.28 ng/ml



#9 Endosulfan I

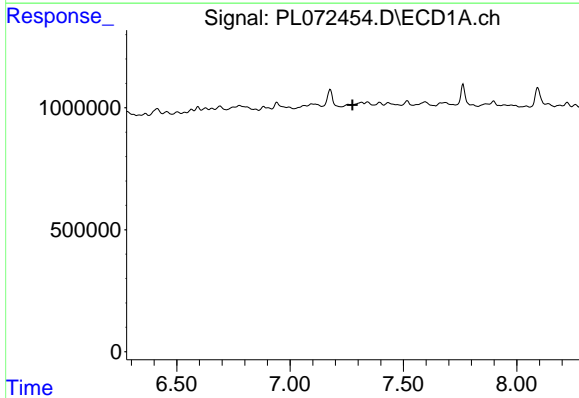
R.T.: 7.395 min  
 Delta R.T.: -0.005 min  
 Response: 163398  
 Conc: 0.23 ng/ml

Instrument :  
 ECD\_L  
 ClientSampleId :



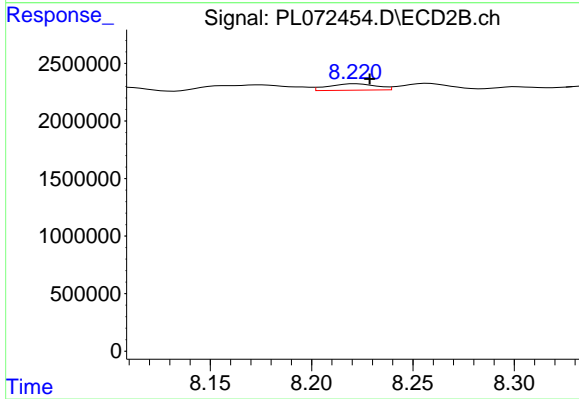
#9 Endosulfan I

R.T.: 8.368 min  
 Delta R.T.: 0.004 min  
 Response: 103120  
 Conc: 0.06 ng/ml



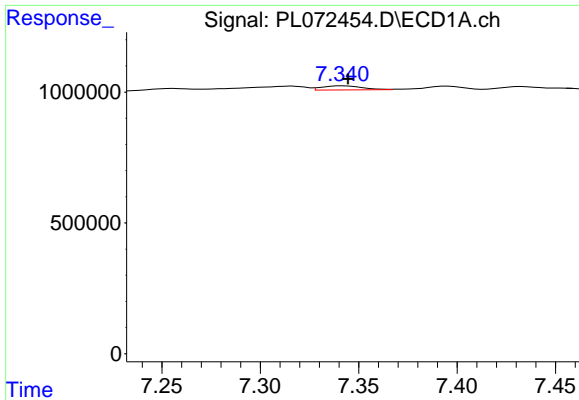
#10 gamma-Chlordane

R.T.: 0.000 min  
 Exp R.T. : 7.275 min  
 Response: 0  
 Conc: N.D.



#10 gamma-Chlordane

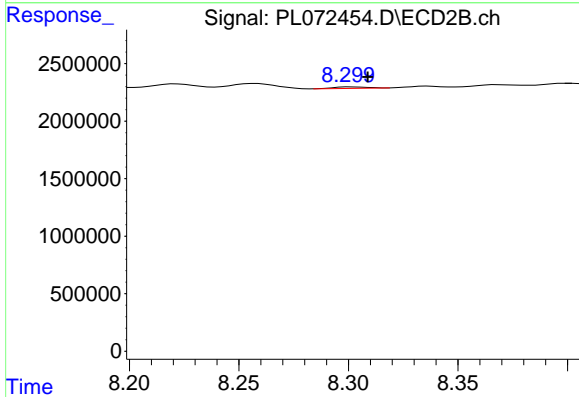
R.T.: 8.222 min  
 Delta R.T.: -0.007 min  
 Response: 918298  
 Conc: 0.45 ng/ml



#11 alpha-Chlordane

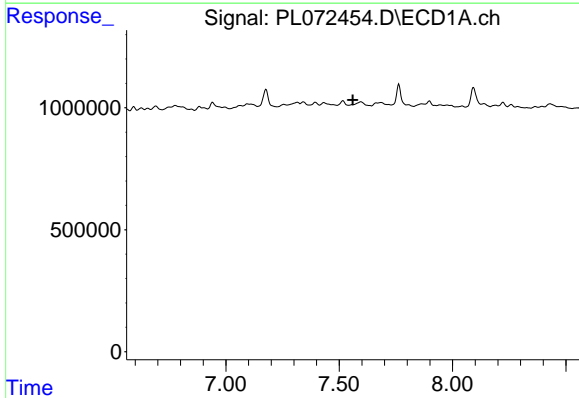
R.T.: 7.342 min  
 Delta R.T.: -0.003 min  
 Response: 225967  
 Conc: 0.29 ng/ml

Instrument :  
 ECD\_L  
 ClientSampleId :



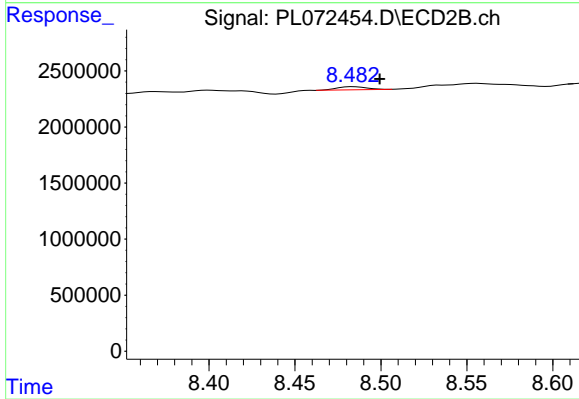
#11 alpha-Chlordane

R.T.: 8.301 min  
 Delta R.T.: -0.007 min  
 Response: 129150  
 Conc: 0.07 ng/ml



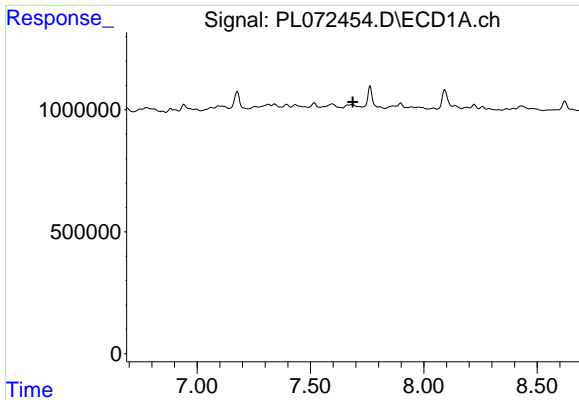
#12 4,4'-DDE

R.T.: 0.000 min  
 Exp R.T. : 7.560 min  
 Response: 0  
 Conc: N.D.



#12 4,4'-DDE

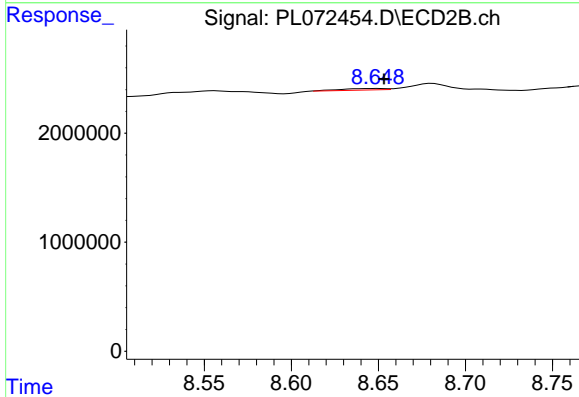
R.T.: 8.484 min  
 Delta R.T.: -0.016 min  
 Response: 336066  
 Conc: 0.18 ng/ml



#13 Dieldrin

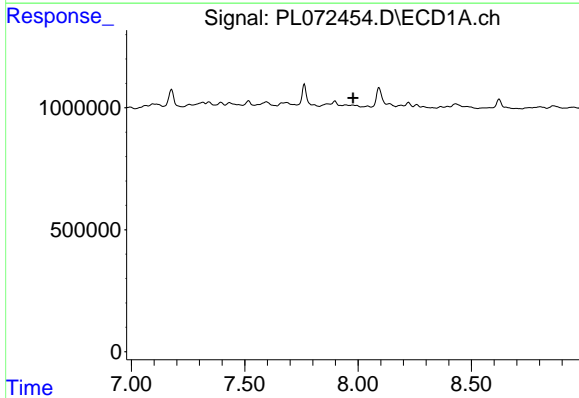
R.T.: 0.000 min  
 Exp R.T.: 7.686 min  
 Response: 0  
 Conc: N.D.

Instrument :  
 ECD\_L  
 ClientSampleId :



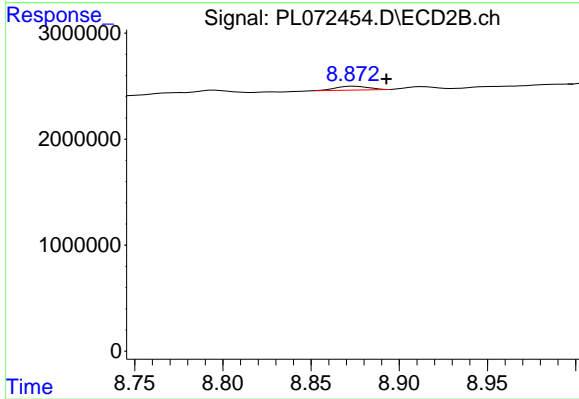
#13 Dieldrin

R.T.: 8.649 min  
 Delta R.T.: -0.004 min  
 Response: 234999  
 Conc: 0.12 ng/ml



#14 Endrin

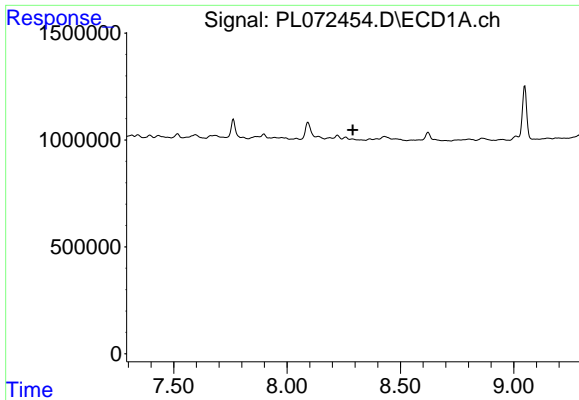
R.T.: 0.000 min  
 Exp R.T.: 7.978 min  
 Response: 0  
 Conc: N.D.



#14 Endrin

R.T.: 8.874 min  
 Delta R.T.: -0.018 min  
 Response: 459698  
 Conc: 0.28 ng/ml

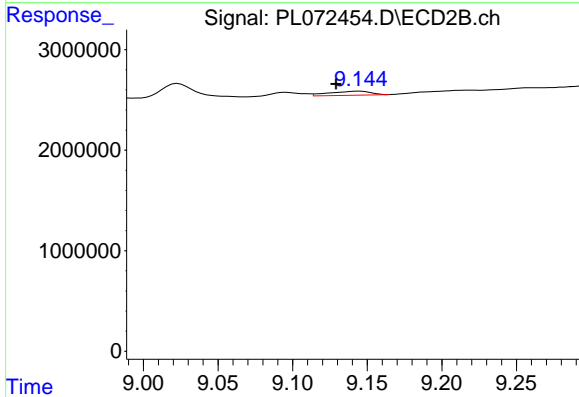




#15 Endosulfan II

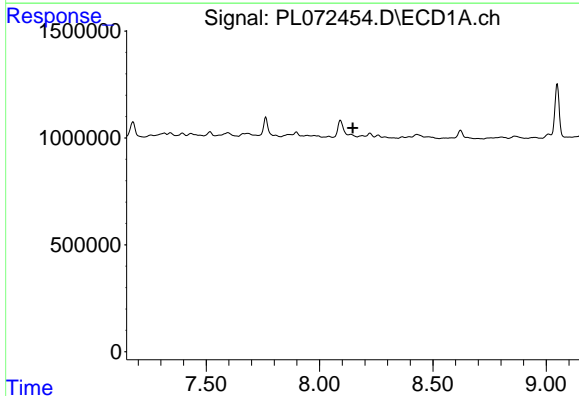
R.T.: 0.000 min  
 Exp R.T.: 8.291 min  
 Response: 0  
 Conc: N.D.

Instrument :  
 ECD\_L  
 ClientSampleId :



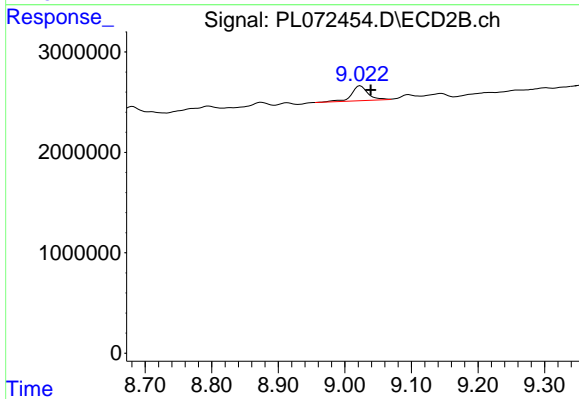
#15 Endosulfan II

R.T.: 9.145 min  
 Delta R.T.: 0.016 min  
 Response: 780341  
 Conc: 0.46 ng/ml



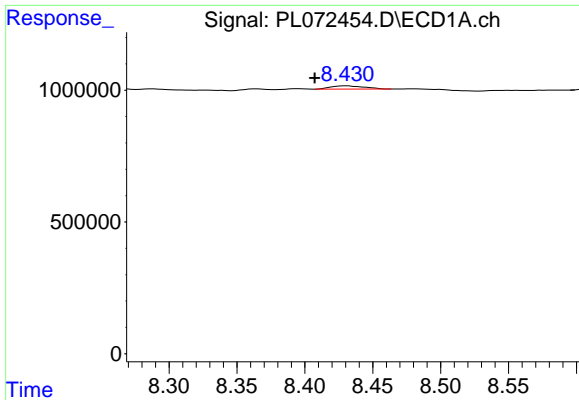
#16 4,4'-DDD

R.T.: 0.000 min  
 Exp R.T.: 8.147 min  
 Response: 0  
 Conc: N.D.



#16 4,4'-DDD

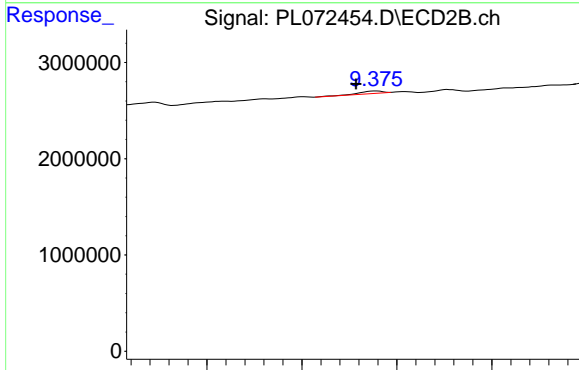
R.T.: 9.023 min  
 Delta R.T.: -0.015 min  
 Response: 2542185  
 Conc: 1.78 ng/ml



#17 4,4'-DDT

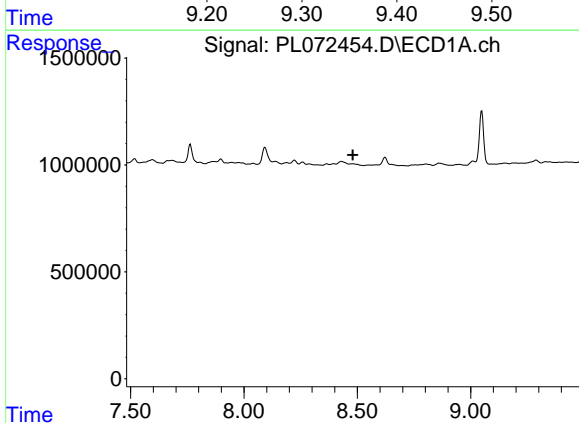
R.T.: 8.431 min  
 Delta R.T.: 0.024 min  
 Response: 212937  
 Conc: 0.32 ng/ml

Instrument :  
 ECD\_L  
 ClientSampleId :



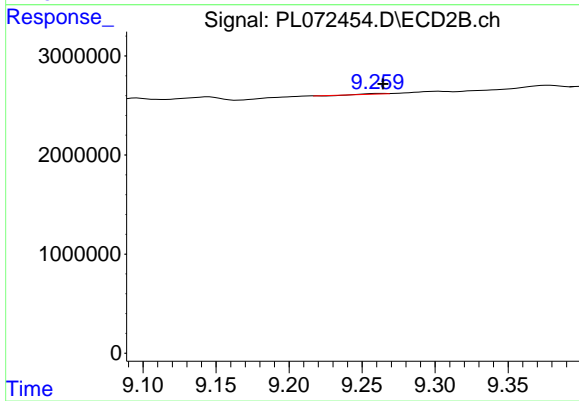
#17 4,4'-DDT

R.T.: 9.378 min  
 Delta R.T.: 0.021 min  
 Response: 423568  
 Conc: 0.27 ng/ml



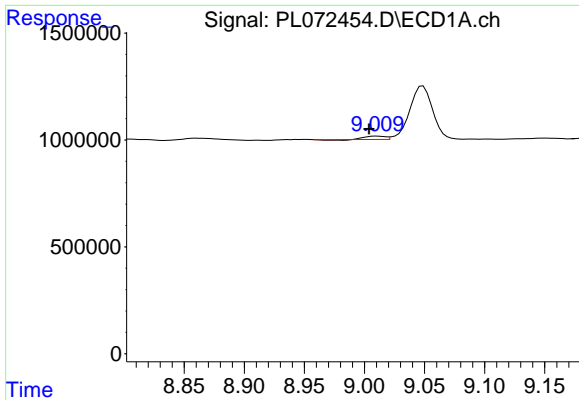
#18 Endrin aldehyde

R.T.: 0.000 min  
 Exp R.T. : 8.480 min  
 Response: 0  
 Conc: N.D.



#18 Endrin aldehyde

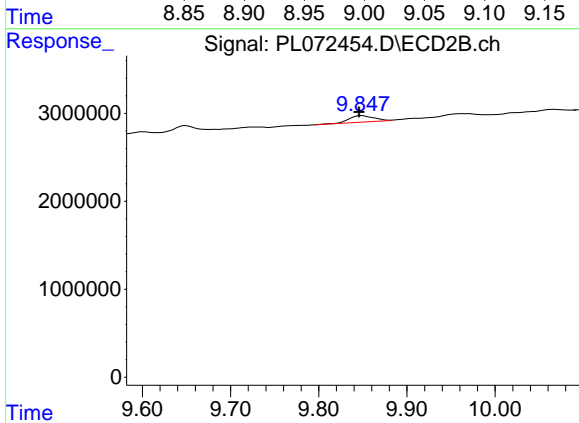
R.T.: 9.262 min  
 Delta R.T.: -0.002 min  
 Response: 1779  
 Conc: 0.00 ng/ml



#20 Methoxychlor

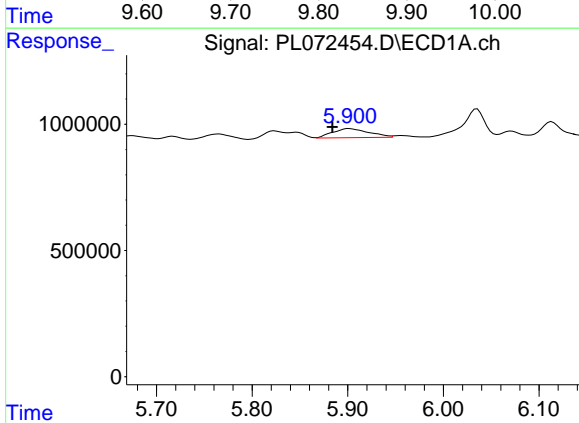
R.T.: 9.010 min  
 Delta R.T.: 0.006 min  
 Response: 163041  
 Conc: 0.39 ng/ml

Instrument :  
 ECD\_L  
 ClientSampleId :



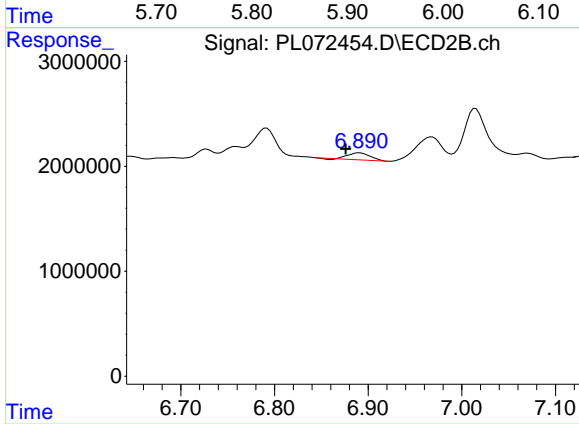
#20 Methoxychlor

R.T.: 9.849 min  
 Delta R.T.: 0.003 min  
 Response: 1450941  
 Conc: 1.75 ng/ml



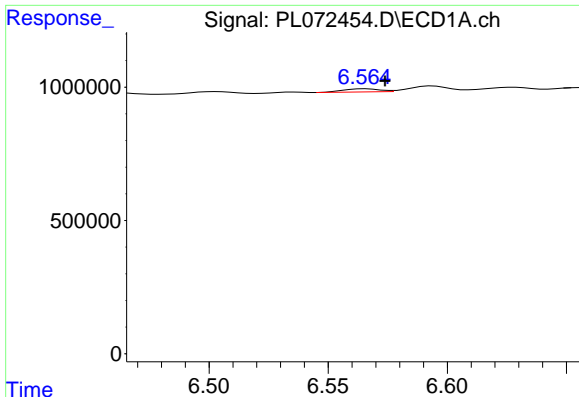
#23 Chlordane-1

R.T.: 5.901 min  
 Delta R.T.: 0.017 min  
 Response: 951594  
 Conc: 46.13 ng/ml



#23 Chlordane-1

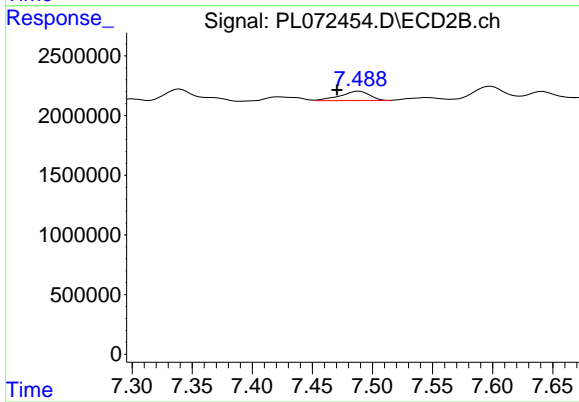
R.T.: 6.891 min  
 Delta R.T.: 0.015 min  
 Response: 1077508  
 Conc: 16.51 ng/ml



#24 Chlordane-2

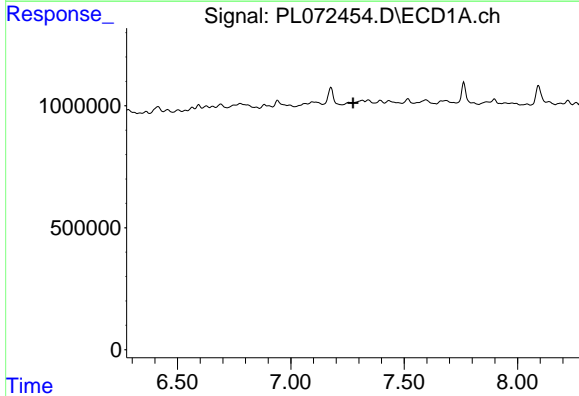
R.T.: 6.566 min  
 Delta R.T.: -0.008 min  
 Response: 126025  
 Conc: 4.58 ng/ml

Instrument :  
 ECD\_L  
 ClientSampleId :



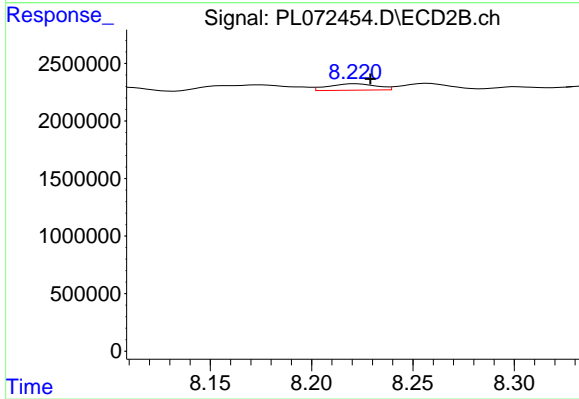
#24 Chlordane-2

R.T.: 7.489 min  
 Delta R.T.: 0.018 min  
 Response: 1332676  
 Conc: 19.07 ng/ml



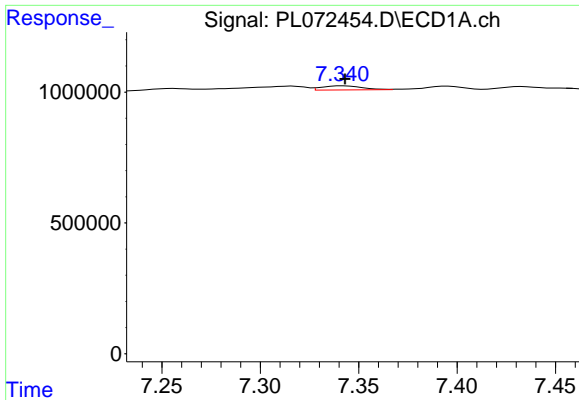
#25 Chlordane-3

R.T.: 0.000 min  
 Exp R.T. : 7.274 min  
 Response: 0  
 Conc: N.D.



#25 Chlordane-3

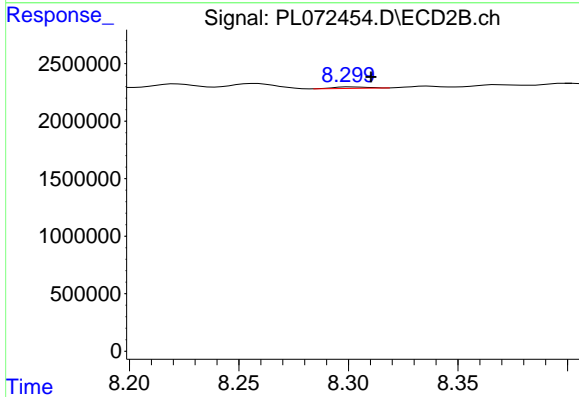
R.T.: 8.222 min  
 Delta R.T.: -0.007 min  
 Response: 918298  
 Conc: 3.31 ng/ml



#26 Chlordane-4

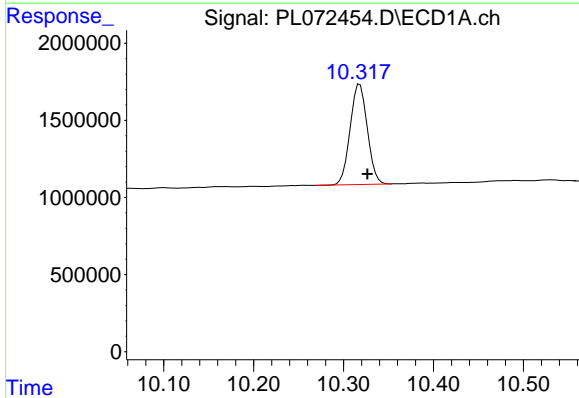
R.T.: 7.342 min  
 Delta R.T.: -0.001 min  
 Response: 225967  
 Conc: 2.74 ng/ml

Instrument :  
 ECD\_L  
 ClientSampleId :



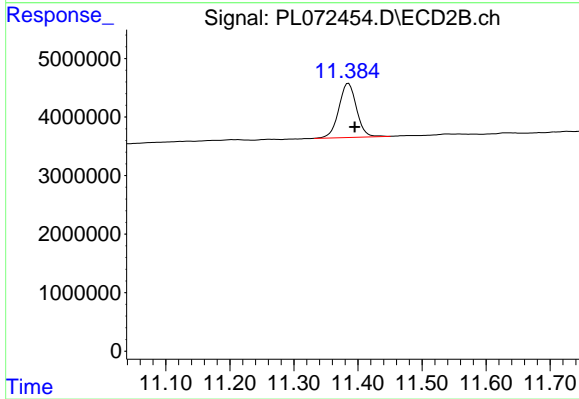
#26 Chlordane-4

R.T.: 8.301 min  
 Delta R.T.: -0.009 min  
 Response: 129150  
 Conc: 0.39 ng/ml



#28 Decachlorobiphenyl

R.T.: 10.318 min  
 Delta R.T.: -0.008 min  
 Response: 8634962  
 Conc: 9.72 ng/ml



#28 Decachlorobiphenyl

R.T.: 11.385 min  
 Delta R.T.: -0.009 min  
 Response: 17718576  
 Conc: 10.98 ng/ml