

Data Path : Z:\pestpcbsrv\HPCHEM1\ECD_L\Data\PL020620\
 Data File : PL056362.D
 Signal(s) : Signal #1: ECD1A.ch Signal #2: ECD2B.ch
 Acq On : 06 Feb 2020 14:09
 Operator : AJ\MA
 Sample : L1408-01
 Misc :
 ALS Vial : 8 Sample Multiplier: 1

Instrument :
 ECD_L
 ClientSampleId :
 SHORE-RD-PATH-BH-01-A

Integration File signal 1: autoint1.e
 Integration File signal 2: autoint2.e
 Quant Time: Feb 07 06:49:34 2020
 Quant Method : Z:\pestpcbsrv\HPCHEM1\ECD_L\methods\PL012820.M
 Quant Title : GC Extractables
 QLast Update : Tue Jan 28 13:10:37 2020
 Response via : Initial Calibration
 Integrator: ChemStation

Volume Inj. : 1 µl
 Signal #1 Phase : ZB-MR2 Signal #2 Phase: ZB-MR1
 Signal #1 Info : 30M x 0.32mm x0.2 Signal #2 Info : 30M x 0.32mm x0.5µm

Compound	RT#1	RT#2	Resp#1	Resp#2	ng/ml	ng/ml
System Monitoring Compounds						
1) SA Tetrachlo...	3.498	4.017	130.7E6	40108076	12.480	13.716
28) SA Decachlor...	8.254	9.097	135.9E6	27077451	12.908	11.971
Target Compounds						
12) B 4,4'-DDE	5.662	6.359	98355476	20270319	6.786	6.767
17) MA 4,4'-DDT	6.418	0.000	27575771	0	2.523	N.D. #

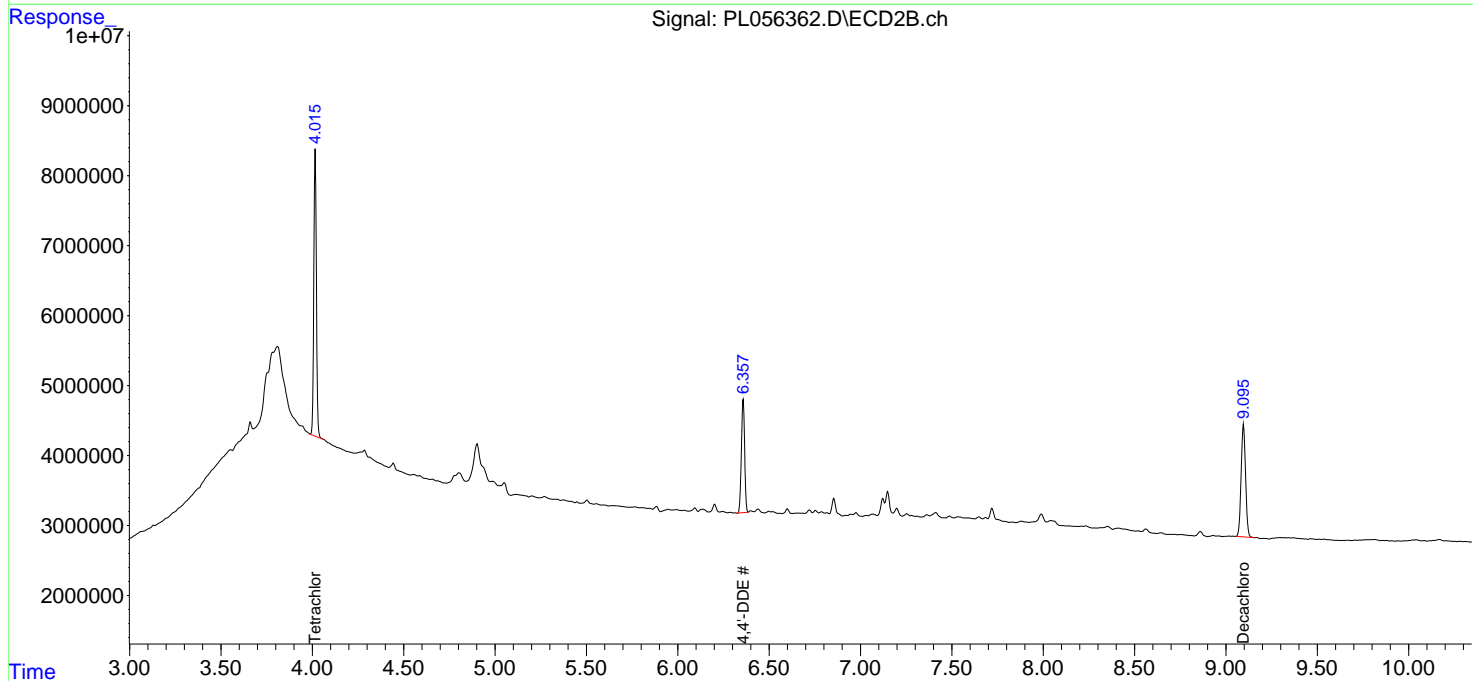
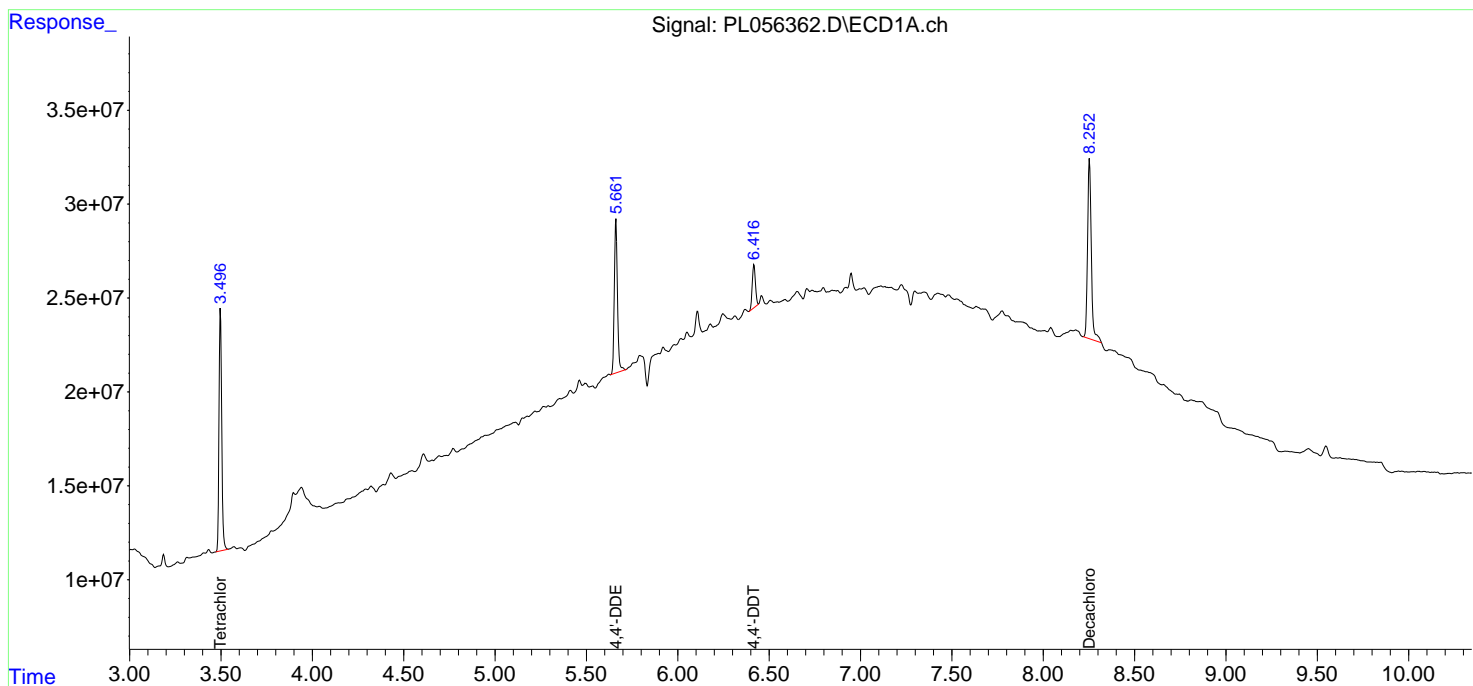
(f)=RT Delta > 1/2 Window (#)=Amounts differ by > 25% (m)=manual int.

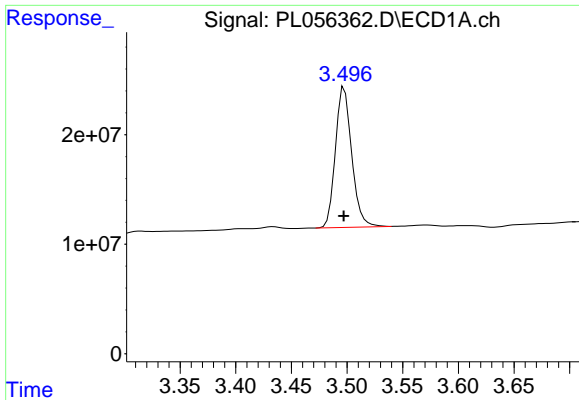
Data Path : Z:\pestpcbsrv\HPCHEM1\ECD_L\Data\PL020620\
 Data File : PL056362.D
 Signal(s) : Signal #1: ECD1A.ch Signal #2: ECD2B.ch
 Acq On : 06 Feb 2020 14:09
 Operator : AJ\MA
 Sample : L1408-01
 Misc :
 ALS Vial : 8 Sample Multiplier: 1

Instrument :
 ECD_L
 ClientSampleId :
 SHORE-RD-PATH-BH-01-A

Integration File signal 1: autoint1.e
 Integration File signal 2: autoint2.e
 Quant Time: Feb 07 06:49:34 2020
 Quant Method : Z:\pestpcbsrv\HPCHEM1\ECD_L\methods\PL012820.M
 Quant Title : GC Extractables
 QLast Update : Tue Jan 28 13:10:37 2020
 Response via : Initial Calibration
 Integrator: ChemStation

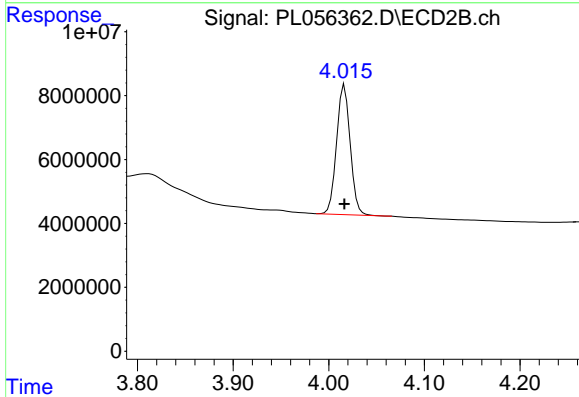
Volume Inj. : 1 µl
 Signal #1 Phase : ZB-MR2 Signal #2 Phase: ZB-MR1
 Signal #1 Info : 30M x 0.32mm x0.2 Signal #2 Info : 30M x 0.32mm x0.5µm



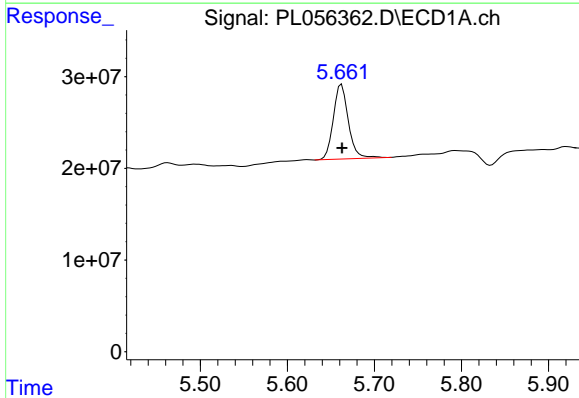


#1 Tetrachloro-m-xylene
 R.T.: 3.498 min
 Delta R.T.: 0.000 min
 Response: 130705920
 Conc: 12.48 ng/ml

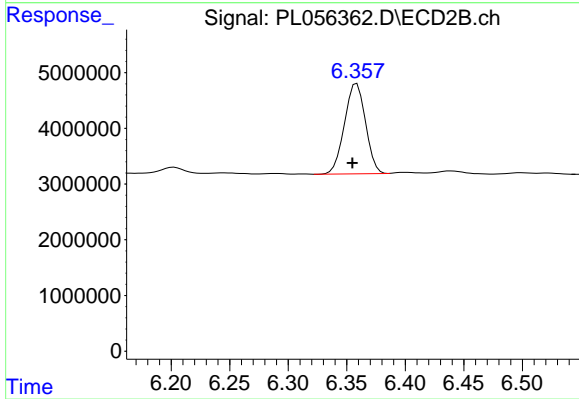
Instrument :
 ECD_L
ClientSampleId :
 SHORE-RD-PATH-BH-01-A



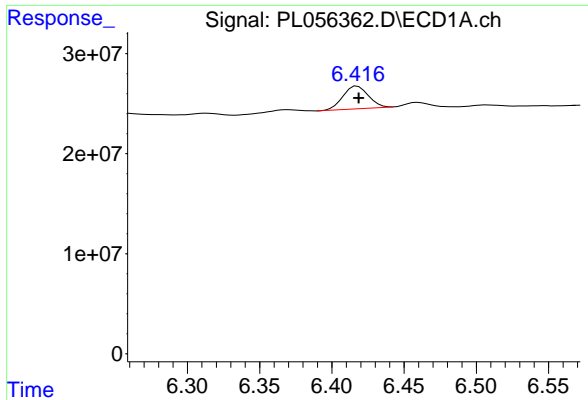
#1 Tetrachloro-m-xylene
 R.T.: 4.017 min
 Delta R.T.: 0.000 min
 Response: 40108076
 Conc: 13.72 ng/ml



#12 4,4'-DDE
 R.T.: 5.662 min
 Delta R.T.: 0.000 min
 Response: 98355476
 Conc: 6.79 ng/ml

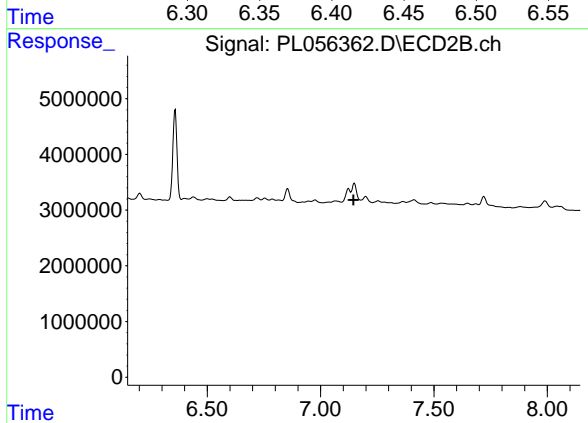


#12 4,4'-DDE
 R.T.: 6.359 min
 Delta R.T.: 0.004 min
 Response: 20270319
 Conc: 6.77 ng/ml

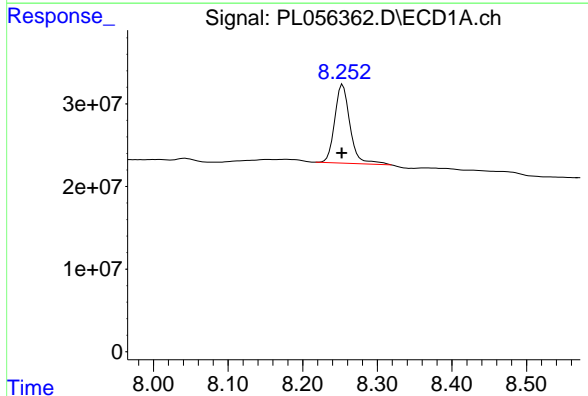


#17 4,4'-DDT
 R.T.: 6.418 min
 Delta R.T.: -0.001 min
 Response: 27575771
 Conc: 2.52 ng/ml

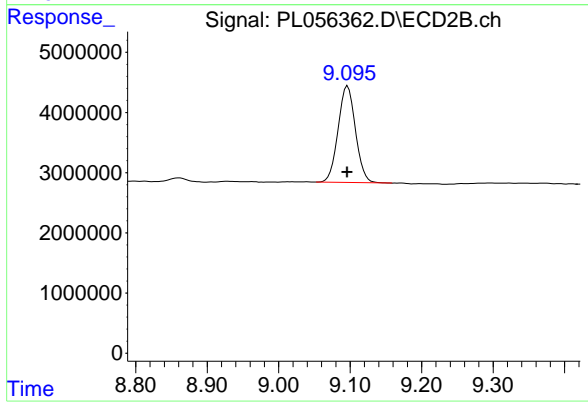
Instrument :
 ECD_L
 ClientSampleId :
 SHORE-RD-PATH-BH-01-A



#17 4,4'-DDT
 R.T.: 0.000 min
 Exp R.T. : 7.146 min
 Response: 0
 Conc: N.D.



#28 Decachlorobiphenyl
 R.T.: 8.254 min
 Delta R.T.: 0.001 min
 Response: 135898131
 Conc: 12.91 ng/ml



#28 Decachlorobiphenyl
 R.T.: 9.097 min
 Delta R.T.: 0.000 min
 Response: 27077451
 Conc: 11.97 ng/ml