

Data Path : Z:\pestpcbsrv\HPCHEM1\ECD_L\Data\PL020822\
 Data File : PL072511.D
 Signal(s) : Signal #1: ECD1A.ch Signal #2: ECD2B.ch
 Acq On : 08 Feb 2022 09:11
 Operator : AR\AJ
 Sample : PEM
 Misc :
 ALS Vial : 3 Sample Multiplier: 1

Instrument :
 ECD_L
 ClientSampleId :

Integration File signal 1: autoint1.e
 Integration File signal 2: autoint2.e
 Quant Time: Feb 08 13:23:52 2022
 Quant Method : Z:\pestpcbsrv\HPCHEM1\ECD_L\methods\PL020722.M
 Quant Title : GC Extractables
 QLast Update : Tue Feb 08 05:14:10 2022
 Response via : Initial Calibration
 Integrator: ChemStation

Volume Inj. : 1 µl
 Signal #1 Phase : ZB-MR2 Signal #2 Phase: ZB-MR1
 Signal #1 Info : 30M x 0.32mm x0.2 Signal #2 Info : 30M x 0.32mm x0.5µm

Compound	RT#1	RT#2	Resp#1	Resp#2	ng/ml	ng/ml

System Monitoring Compounds						
1) SA Tetrachlo...	4.558	5.493	10408459	37416160	21.616	21.661
28) SA Decachlor...	10.319	11.387	17043870	35902645	22.513	22.640
Target Compounds						
2) A alpha-BHC	5.264	6.074	6526696	24165220	9.899	10.091
3) MA gamma-BHC...	5.687	6.470	6197504	24662631	9.861	10.711
4) MA Heptachlor	6.072f	0.000	3413269	0	4.676	N.D. #
5) MB Aldrin	6.423	0.000	3018	0	0.005	N.D. #
6) B beta-BHC	6.072	6.731	3413269	12398215	13.775	12.162
7) B delta-BHC	6.340	7.016f	65391	484048	0.099	0.211 #
8) B Heptachlo...	7.009f	7.964	-4098	1071036	N.D.	0.555
9) A Endosulfan I	7.415f	8.339f	53691	553217	0.092	0.316 #
10) B gamma-Chl...	7.260	8.228	33733	964371	0.053	0.499 #
11) B alpha-Chl...	7.343	0.000	18069	0	0.028	N.D. #
12) B 4,4'-DDE	7.557	8.495	139994	364150	0.230	0.195
13) MA Dieldrin	7.681	8.656	52472	41476	0.083	0.022 #
14) MA Endrin	7.975	8.888	32434953	91575913	55.368	58.120
15) B Endosulfa...	8.261f	9.148f	62969	664137	0.103	0.395 #
16) A 4,4'-DDD	8.143	9.036	294294	935759	0.612	0.676
17) MA 4,4'-DDT	8.403	9.352	64461775	183.0E6	119.799	119.529
18) B Endrin al...	8.479	9.261	301588	290670	0.692	0.258 #
19) B Endosulfa...	8.705	9.525f	41858	298306	0.070	0.199 #
20) A Methoxychlor	8.999	9.840	90844358	230.0E6	258.357	284.035
21) B Endrin ke...	9.224	9.994	544942	915355	0.793	0.575 #
22) Mirex	9.433f	0.000	84642	0	0.143	N.D. #
23) Chlordane-1	5.878	0.000	17109	0	0.922	N.D. #
24) Chlordane-2	6.569	0.000	9931	0	0.393	N.D. #
25) Chlordane-3	7.260	8.228	33733	964371	0.500	3.227 #
26) Chlordane-4	7.343	0.000	18069	0	0.246	N.D. #
27) Chlordane-5	8.261f	0.000	62969	0	2.454	N.D. #

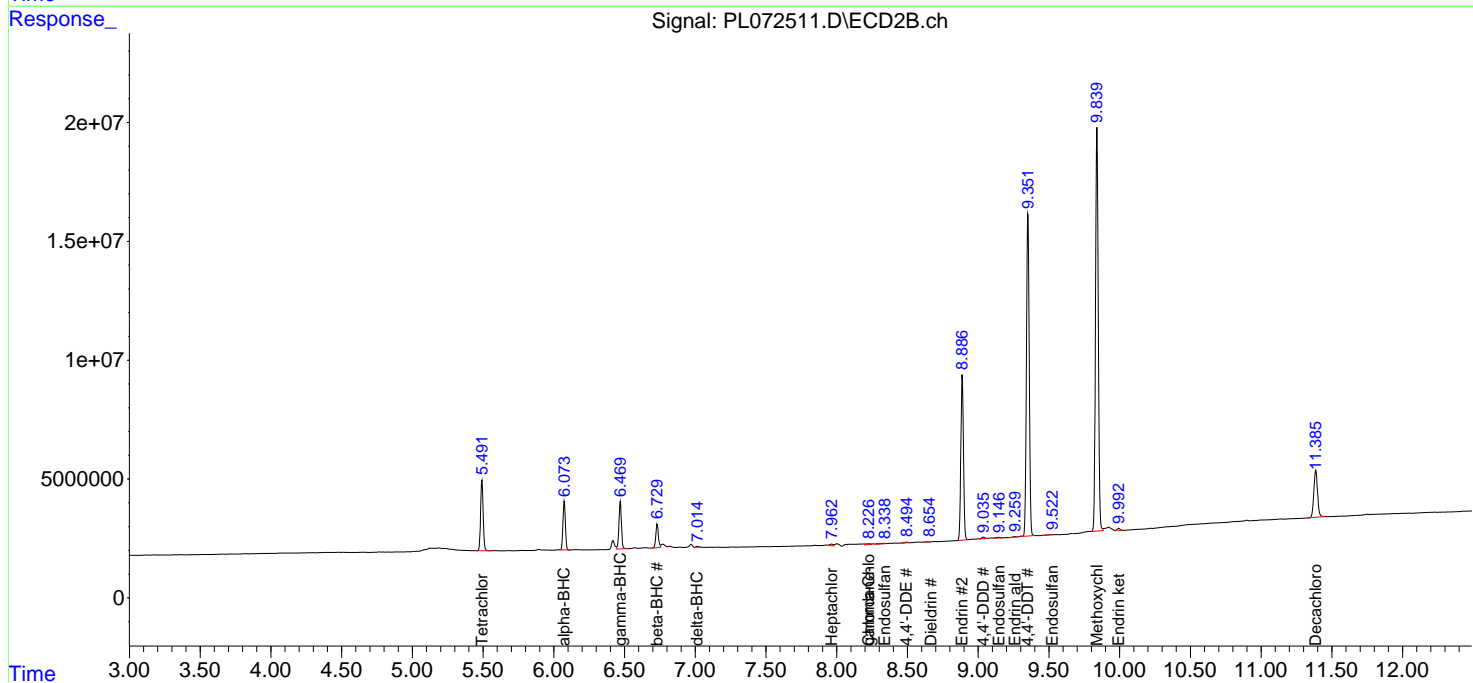
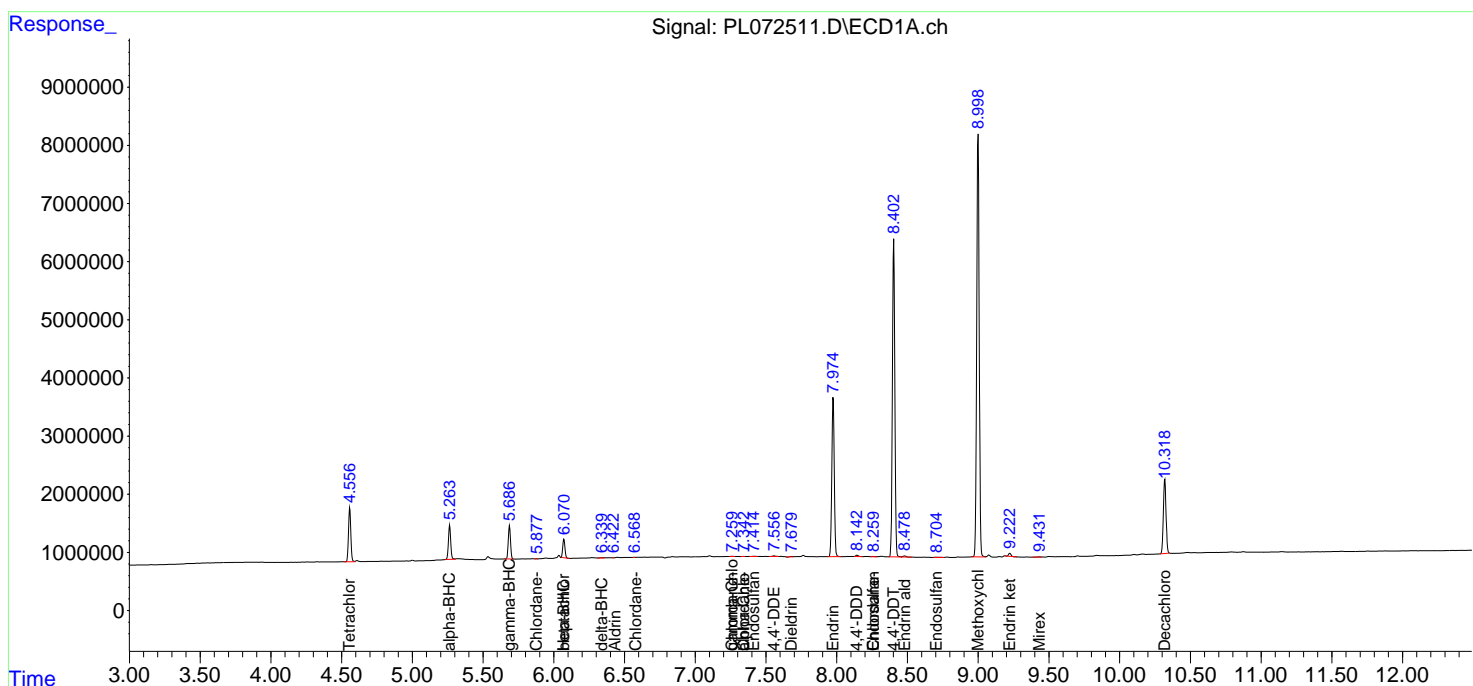
(f)=RT Delta > 1/2 Window (#)=Amounts differ by > 25% (m)=manual int.

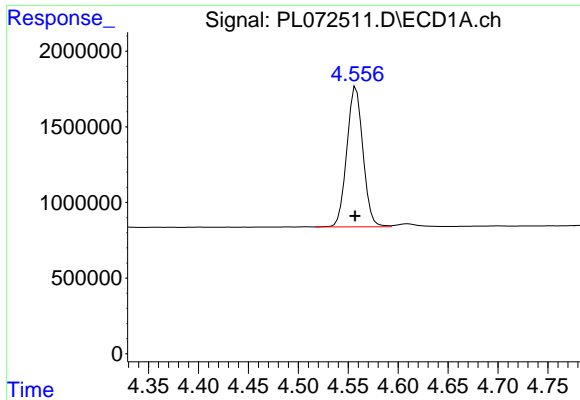
Data Path : Z:\pestpcbsrv\HPCHEM1\ECD_L\Data\PL020822\
 Data File : PL072511.D
 Signal(s) : Signal #1: ECD1A.ch Signal #2: ECD2B.ch
 Acq On : 08 Feb 2022 09:11
 Operator : AR\AJ
 Sample : PEM
 Misc :
 ALS Vial : 3 Sample Multiplier: 1

Instrument :
 ECD_L
 ClientSampleId :

Integration File signal 1: autoint1.e
 Integration File signal 2: autoint2.e
 Quant Time: Feb 08 13:23:52 2022
 Quant Method : Z:\pestpcbsrv\HPCHEM1\ECD_L\methods\PL020722.M
 Quant Title : GC Extractables
 QLast Update : Tue Feb 08 05:14:10 2022
 Response via : Initial Calibration
 Integrator: ChemStation

Volume Inj. : 1 µl
 Signal #1 Phase : ZB-MR2 Signal #2 Phase: ZB-MR1
 Signal #1 Info : 30M x 0.32mm x0.2 Signal #2 Info : 30M x 0.32mm x0.5µm

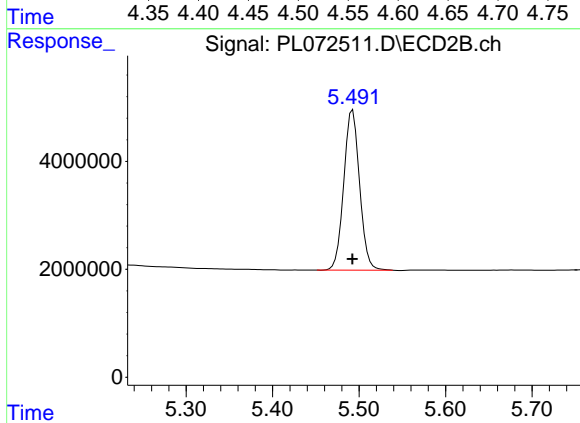




#1 Tetrachloro-m-xylene

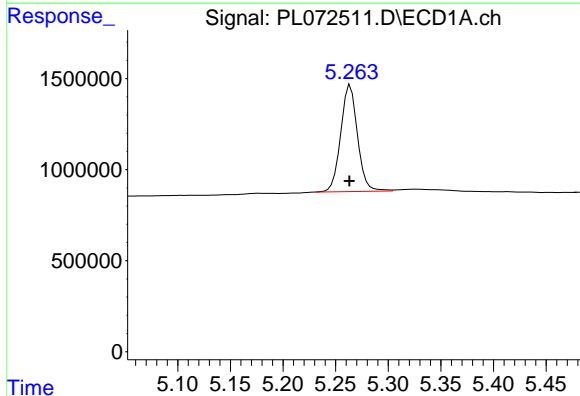
R.T.: 4.558 min
 Delta R.T.: 0.000 min
 Response: 10408459
 Conc: 21.62 ng/ml

Instrument :
 ECD_L
 ClientSampleId :



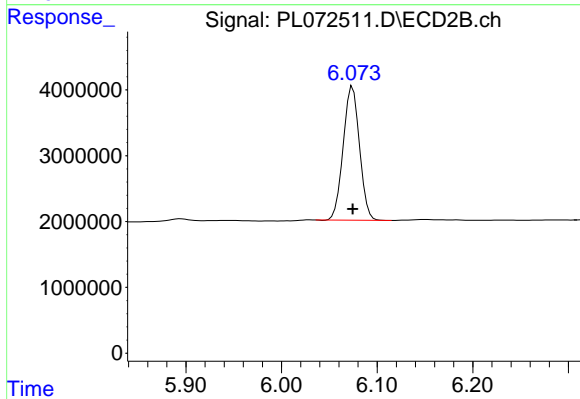
#1 Tetrachloro-m-xylene

R.T.: 5.493 min
 Delta R.T.: 0.000 min
 Response: 37416160
 Conc: 21.66 ng/ml



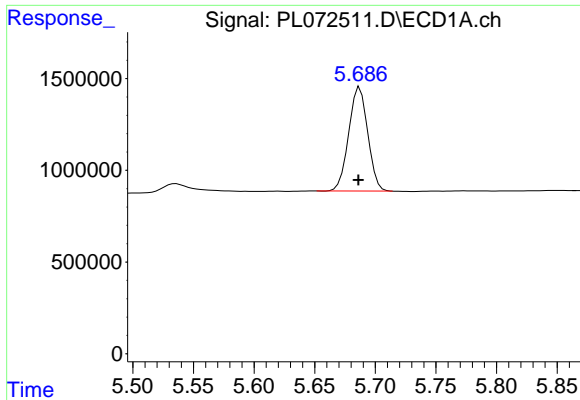
#2 alpha-BHC

R.T.: 5.264 min
 Delta R.T.: 0.000 min
 Response: 6526696
 Conc: 9.90 ng/ml



#2 alpha-BHC

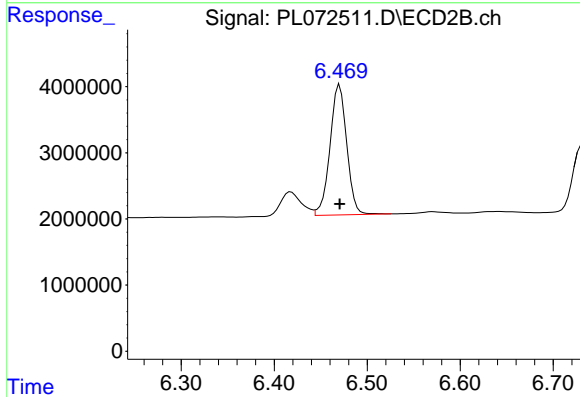
R.T.: 6.074 min
 Delta R.T.: 0.000 min
 Response: 24165220
 Conc: 10.09 ng/ml



#3 gamma-BHC (Lindane)

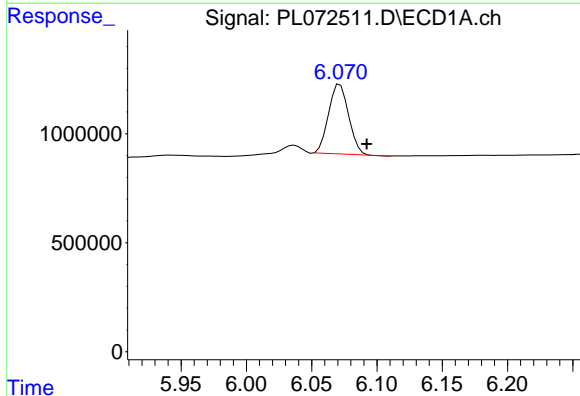
R.T.: 5.687 min
 Delta R.T.: 0.001 min
 Response: 6197504
 Conc: 9.86 ng/ml

Instrument :
 ECD_L
 ClientSampleId :



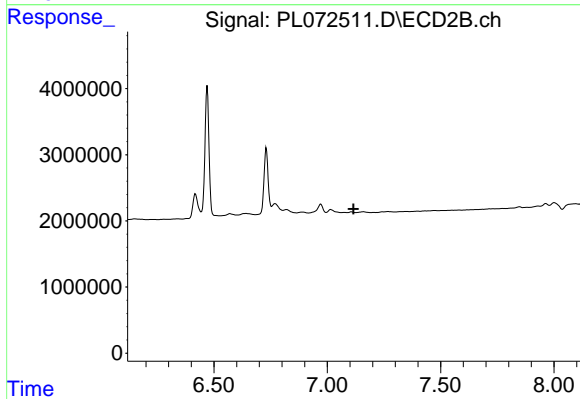
#3 gamma-BHC (Lindane)

R.T.: 6.470 min
 Delta R.T.: 0.000 min
 Response: 24662631
 Conc: 10.71 ng/ml



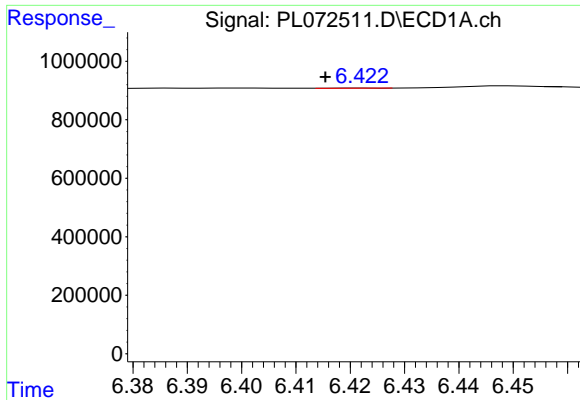
#4 Heptachlor

R.T.: 6.072 min
 Delta R.T.: -0.020 min
 Response: 3413269
 Conc: 4.68 ng/ml



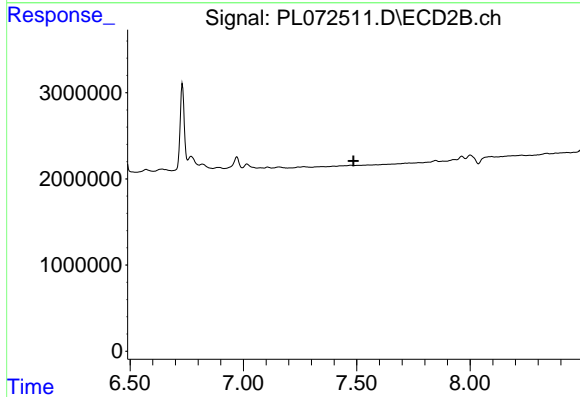
#4 Heptachlor

R.T.: 0.000 min
 Exp R.T. : 7.116 min
 Response: 0
 Conc: N.D.

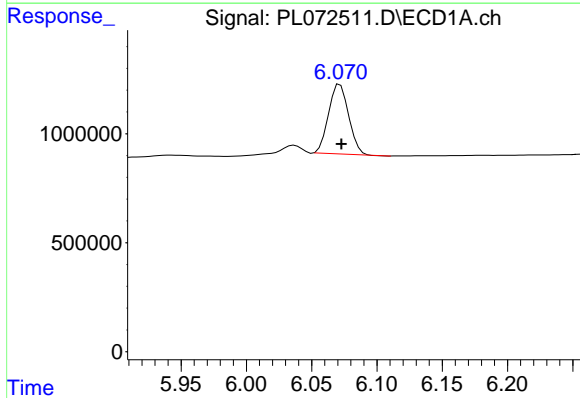


#5 Aldrin
 R.T.: 6.423 min
 Delta R.T.: 0.007 min
 Response: 3018
 Conc: 0.00 ng/ml

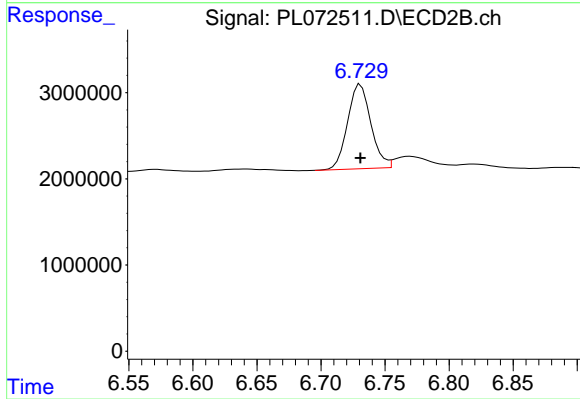
Instrument :
 ECD_L
 ClientSampleId :



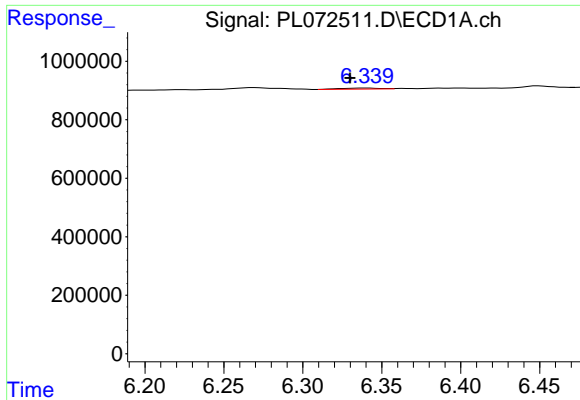
#5 Aldrin
 R.T.: 0.000 min
 Exp R.T. : 7.486 min
 Response: 0
 Conc: N.D.



#6 beta-BHC
 R.T.: 6.072 min
 Delta R.T.: -0.001 min
 Response: 3413269
 Conc: 13.77 ng/ml



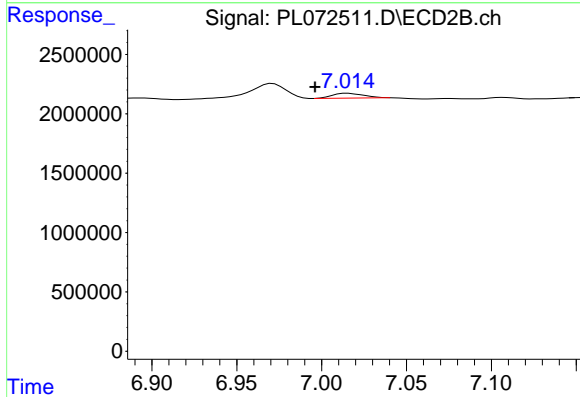
#6 beta-BHC
 R.T.: 6.731 min
 Delta R.T.: 0.000 min
 Response: 12398215
 Conc: 12.16 ng/ml



#7 delta-BHC

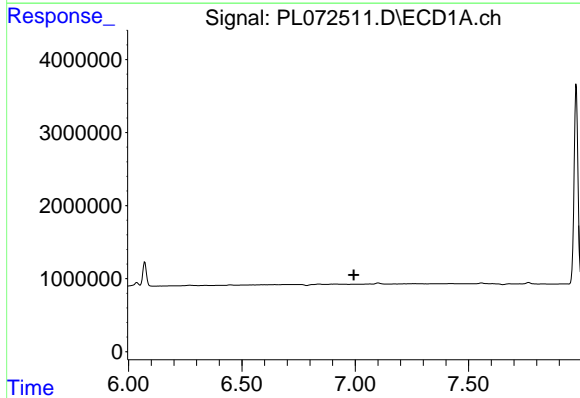
R.T.: 6.340 min
 Delta R.T.: 0.011 min
 Response: 65391
 Conc: 0.10 ng/ml

Instrument :
 ECD_L
 ClientSampleId :



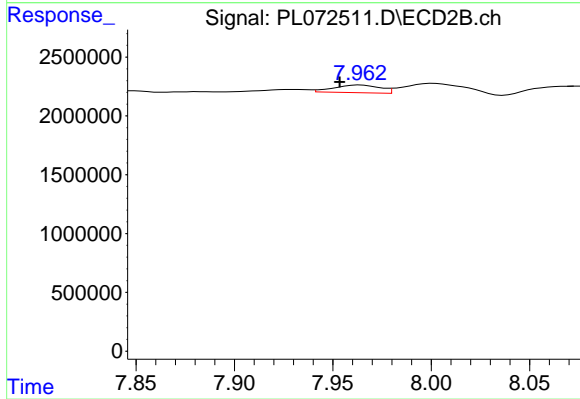
#7 delta-BHC

R.T.: 7.016 min
 Delta R.T.: 0.019 min
 Response: 484048
 Conc: 0.21 ng/ml



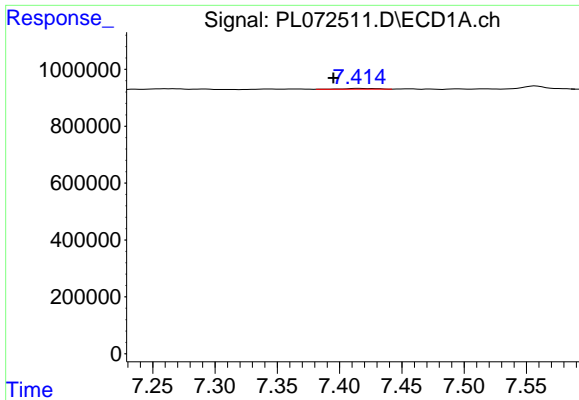
#8 Heptachlor epoxide

R.T.: 7.009 min
 Delta R.T.: 0.015 min
 Response: -4098
 Conc: N.D.



#8 Heptachlor epoxide

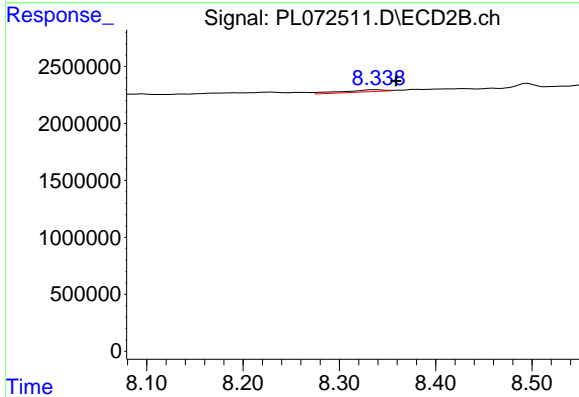
R.T.: 7.964 min
 Delta R.T.: 0.010 min
 Response: 1071036
 Conc: 0.56 ng/ml



#9 Endosulfan I

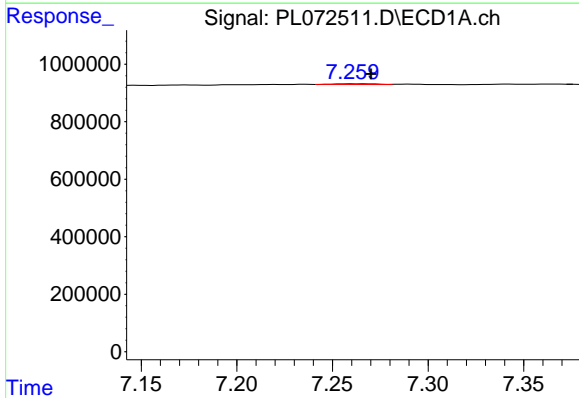
R.T.: 7.415 min
 Delta R.T.: 0.020 min
 Response: 53691
 Conc: 0.09 ng/ml

Instrument :
 ECD_L
 ClientSampleId :



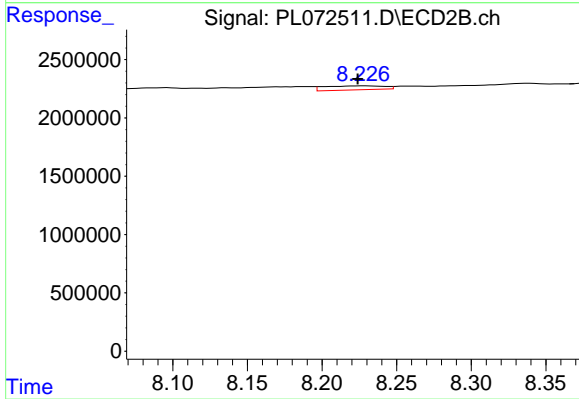
#9 Endosulfan I

R.T.: 8.339 min
 Delta R.T.: -0.019 min
 Response: 553217
 Conc: 0.32 ng/ml



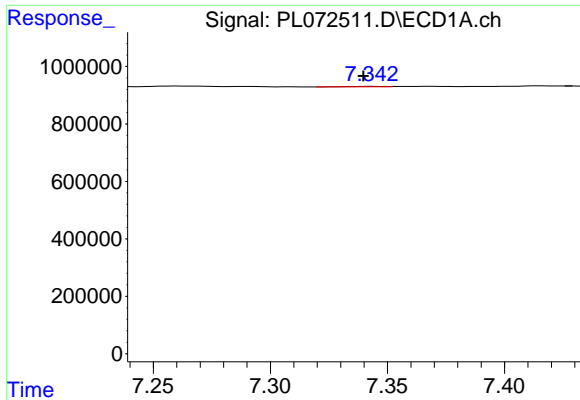
#10 gamma-Chlordane

R.T.: 7.260 min
 Delta R.T.: -0.010 min
 Response: 33733
 Conc: 0.05 ng/ml



#10 gamma-Chlordane

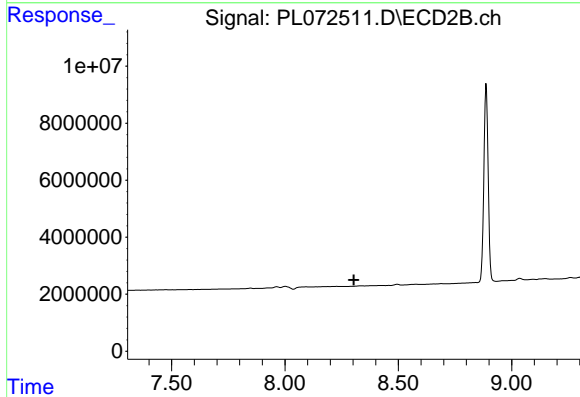
R.T.: 8.228 min
 Delta R.T.: 0.004 min
 Response: 964371
 Conc: 0.50 ng/ml



#11 alpha-Chlordane

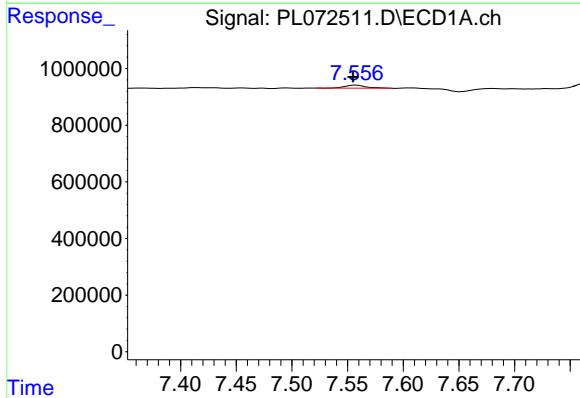
R.T.: 7.343 min
 Delta R.T.: 0.004 min
 Response: 18069
 Conc: 0.03 ng/ml

Instrument :
 ECD_L
 ClientSampleId :



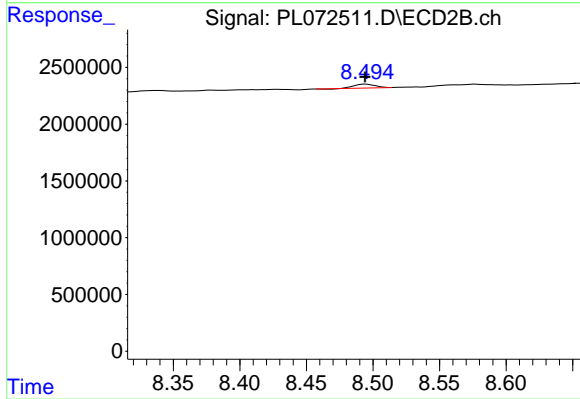
#11 alpha-Chlordane

R.T.: 0.000 min
 Exp R.T. : 8.304 min
 Response: 0
 Conc: N.D.



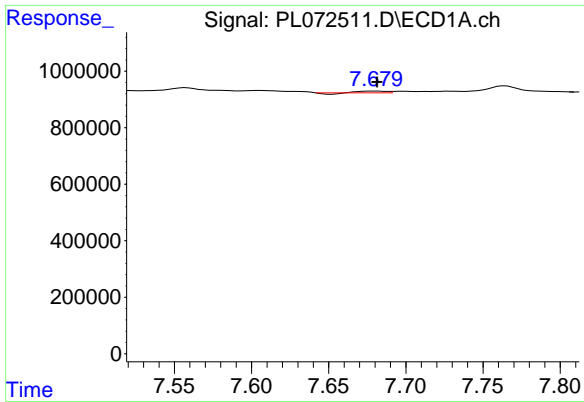
#12 4,4'-DDE

R.T.: 7.557 min
 Delta R.T.: 0.003 min
 Response: 139994
 Conc: 0.23 ng/ml



#12 4,4'-DDE

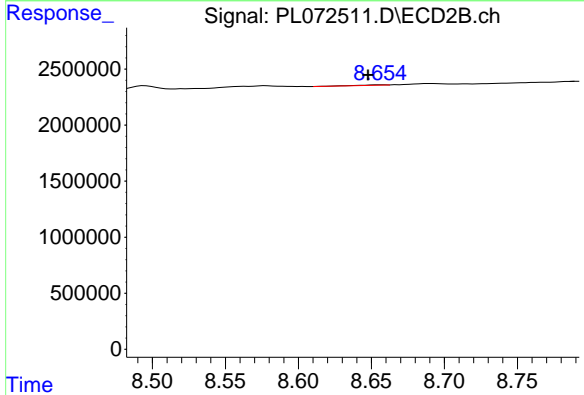
R.T.: 8.495 min
 Delta R.T.: 0.000 min
 Response: 364150
 Conc: 0.19 ng/ml



#13 Dieldrin

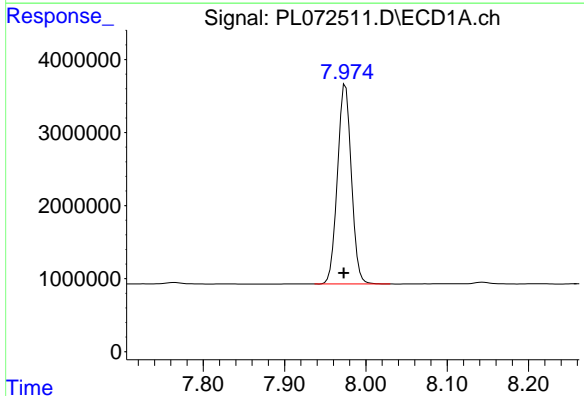
R.T.: 7.681 min
 Delta R.T.: 0.000 min
 Response: 52472
 Conc: 0.08 ng/ml

Instrument :
 ECD_L
 ClientSampleId :



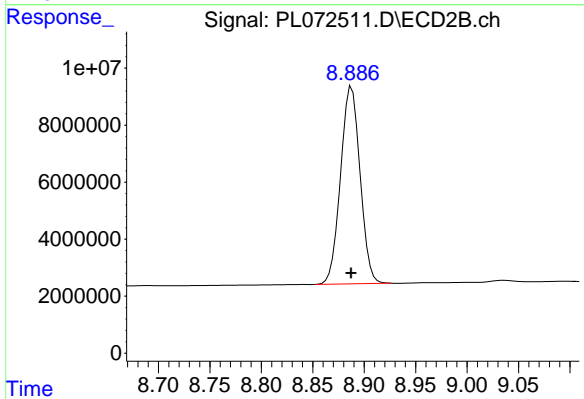
#13 Dieldrin

R.T.: 8.656 min
 Delta R.T.: 0.008 min
 Response: 41476
 Conc: 0.02 ng/ml



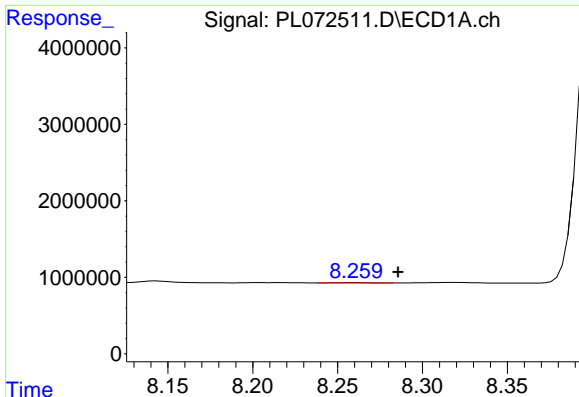
#14 Endrin

R.T.: 7.975 min
 Delta R.T.: 0.002 min
 Response: 32434953
 Conc: 55.37 ng/ml



#14 Endrin

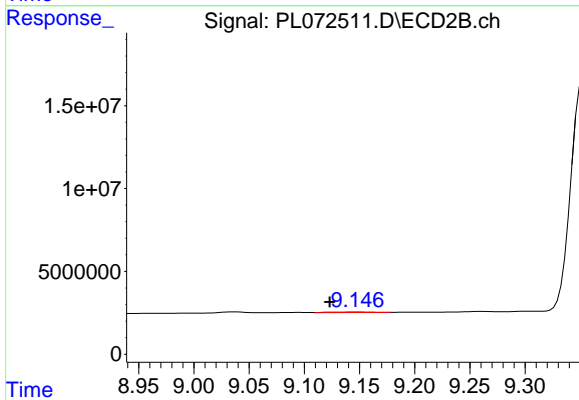
R.T.: 8.888 min
 Delta R.T.: 0.000 min
 Response: 91575913
 Conc: 58.12 ng/ml



#15 Endosulfan II

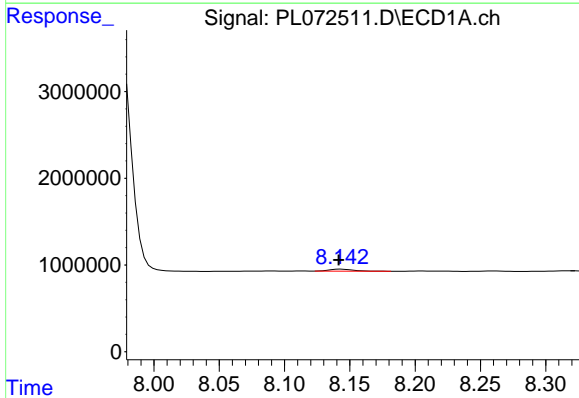
R.T.: 8.261 min
 Delta R.T.: -0.025 min
 Response: 62969
 Conc: 0.10 ng/ml

Instrument :
 ECD_L
 ClientSampleId :



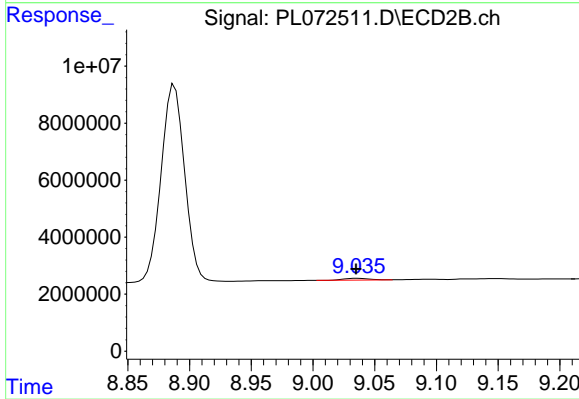
#15 Endosulfan II

R.T.: 9.148 min
 Delta R.T.: 0.025 min
 Response: 664137
 Conc: 0.40 ng/ml



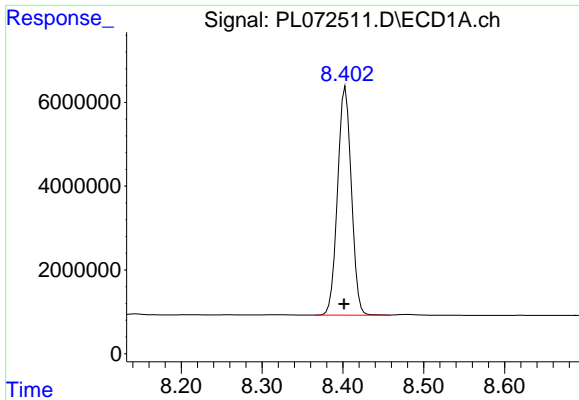
#16 4,4'-DDD

R.T.: 8.143 min
 Delta R.T.: 0.002 min
 Response: 294294
 Conc: 0.61 ng/ml



#16 4,4'-DDD

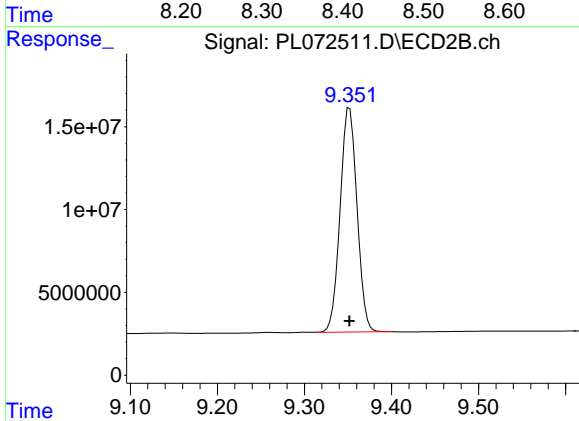
R.T.: 9.036 min
 Delta R.T.: 0.001 min
 Response: 935759
 Conc: 0.68 ng/ml



#17 4,4'-DDT

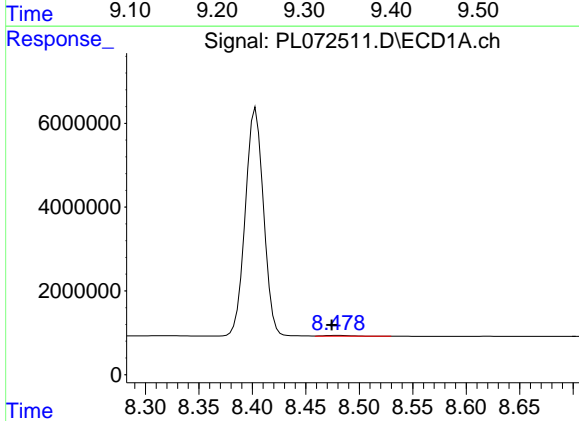
R.T.: 8.403 min
 Delta R.T.: 0.002 min
 Response: 64461775
 Conc: 119.80 ng/ml

Instrument :
 ECD_L
 ClientSampleId :



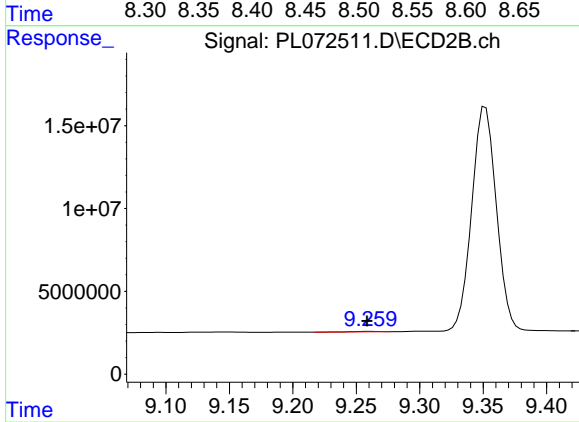
#17 4,4'-DDT

R.T.: 9.352 min
 Delta R.T.: 0.000 min
 Response: 182981684
 Conc: 119.53 ng/ml



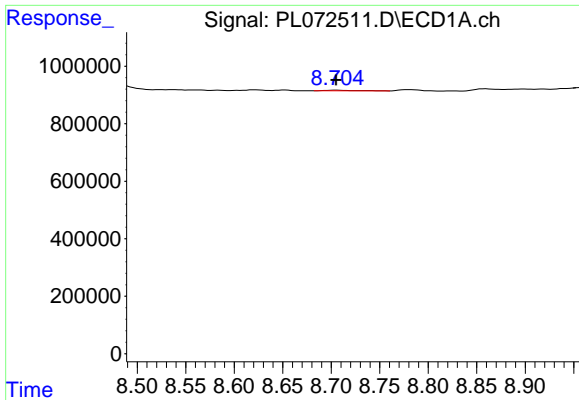
#18 Endrin aldehyde

R.T.: 8.479 min
 Delta R.T.: 0.005 min
 Response: 301588
 Conc: 0.69 ng/ml



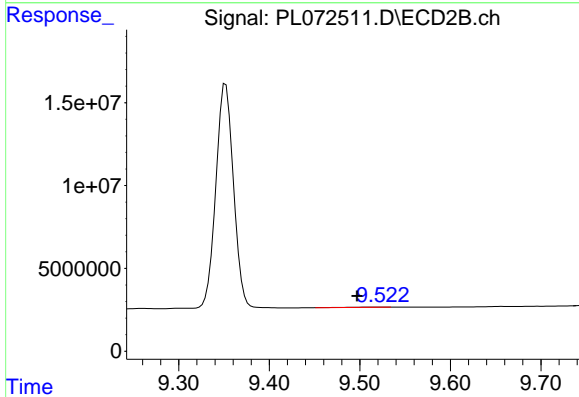
#18 Endrin aldehyde

R.T.: 9.261 min
 Delta R.T.: 0.003 min
 Response: 290670
 Conc: 0.26 ng/ml

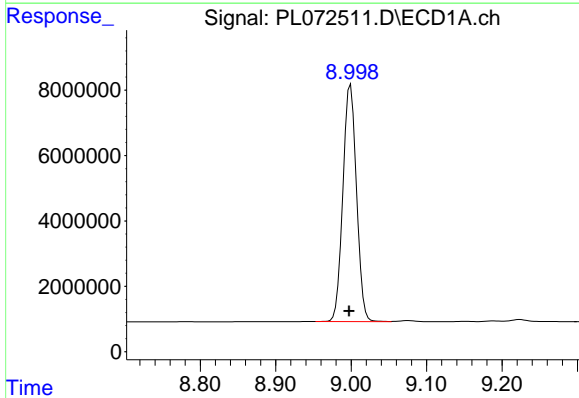


#19 Endosulfan Sulfate
 R.T.: 8.705 min
 Delta R.T.: 0.000 min
 Response: 41858
 Conc: 0.07 ng/ml

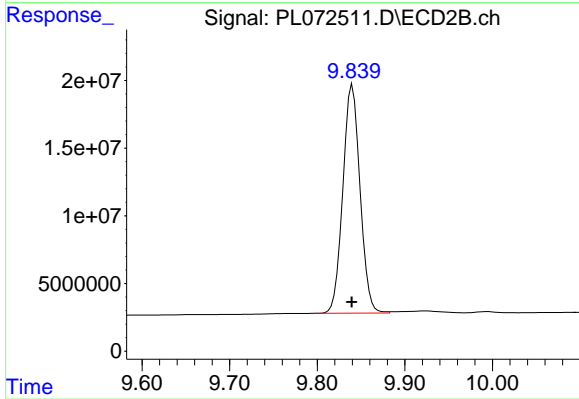
Instrument :
 ECD_L
 ClientSampleId :



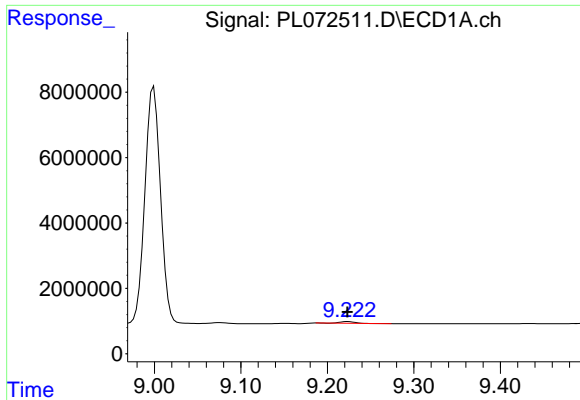
#19 Endosulfan Sulfate
 R.T.: 9.525 min
 Delta R.T.: 0.028 min
 Response: 298306
 Conc: 0.20 ng/ml



#20 Methoxychlor
 R.T.: 8.999 min
 Delta R.T.: 0.002 min
 Response: 90844358
 Conc: 258.36 ng/ml



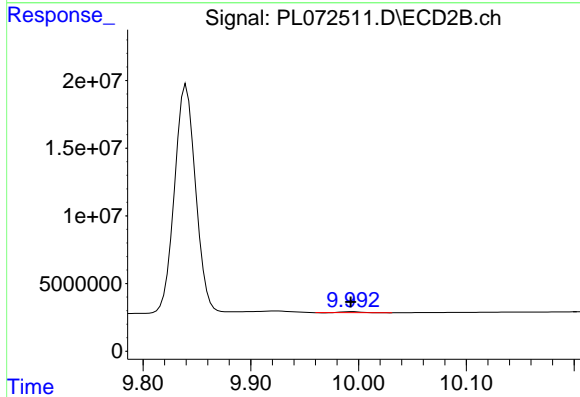
#20 Methoxychlor
 R.T.: 9.840 min
 Delta R.T.: 0.000 min
 Response: 229970343
 Conc: 284.04 ng/ml



#21 Endrin ketone

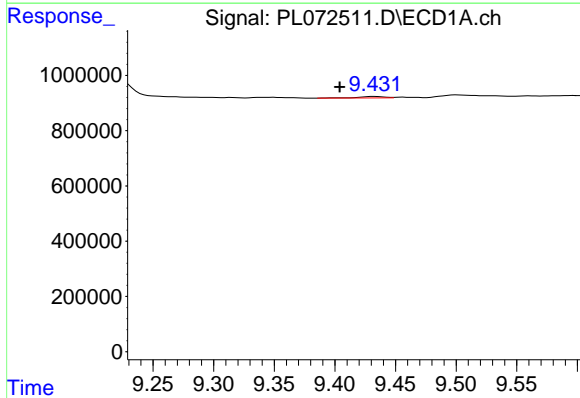
R.T.: 9.224 min
 Delta R.T.: 0.000 min
 Response: 544942
 Conc: 0.79 ng/ml

Instrument :
 ECD_L
 ClientSampleId :



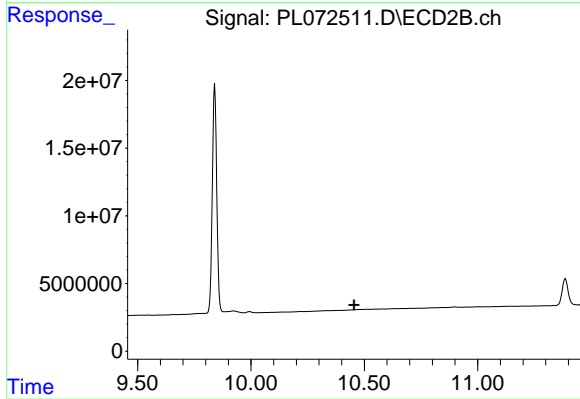
#21 Endrin ketone

R.T.: 9.994 min
 Delta R.T.: 0.000 min
 Response: 915355
 Conc: 0.57 ng/ml



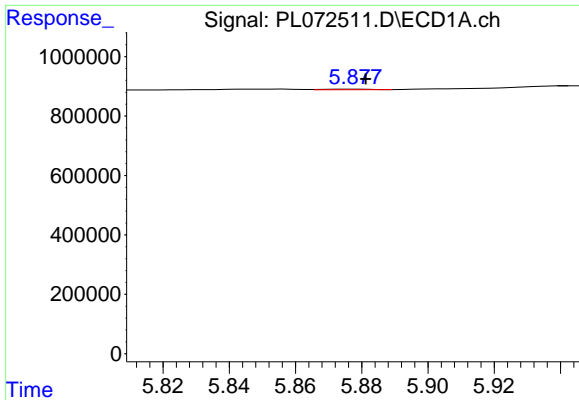
#22 Mirex

R.T.: 9.433 min
 Delta R.T.: 0.029 min
 Response: 84642
 Conc: 0.14 ng/ml



#22 Mirex

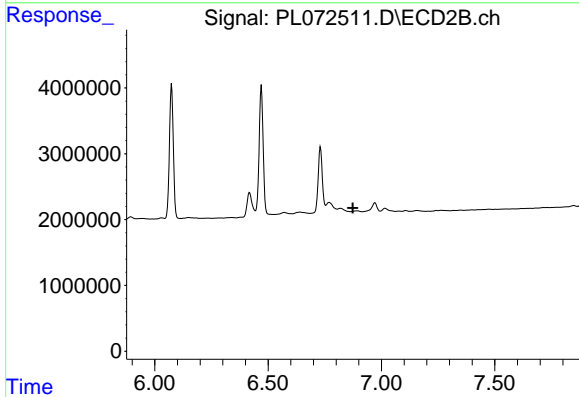
R.T.: 0.000 min
 Exp R.T. : 10.456 min
 Response: 0
 Conc: N.D.



#23 Chlordane-1

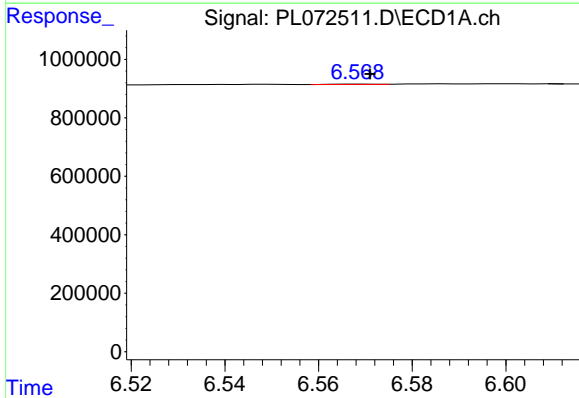
R.T.: 5.878 min
 Delta R.T.: -0.003 min
 Response: 17109
 Conc: 0.92 ng/ml

Instrument :
 ECD_L
 ClientSampleId :



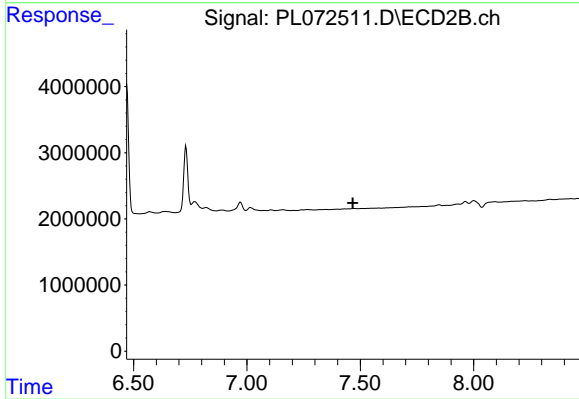
#23 Chlordane-1

R.T.: 0.000 min
 Exp R.T. : 6.874 min
 Response: 0
 Conc: N.D.



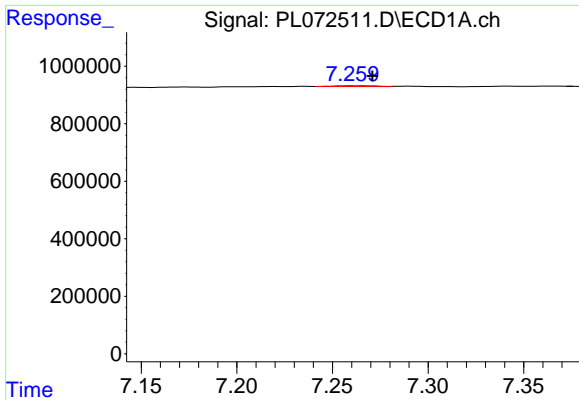
#24 Chlordane-2

R.T.: 6.569 min
 Delta R.T.: -0.002 min
 Response: 9931
 Conc: 0.39 ng/ml



#24 Chlordane-2

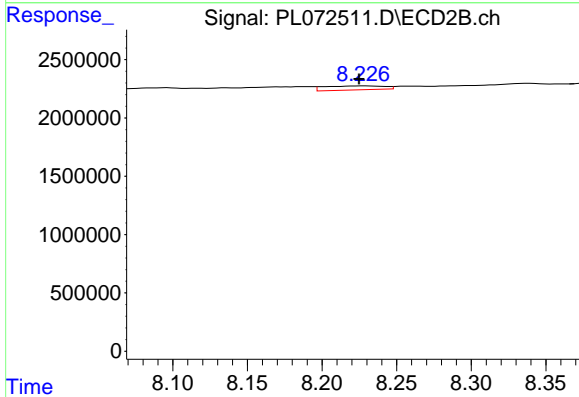
R.T.: 0.000 min
 Exp R.T. : 7.467 min
 Response: 0
 Conc: N.D.



#25 Chlordane-3

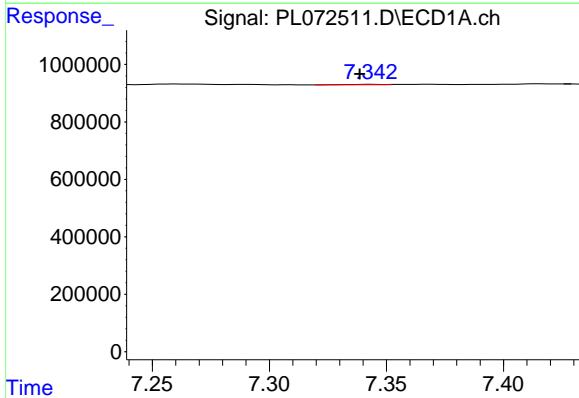
R.T.: 7.260 min
 Delta R.T.: -0.011 min
 Response: 33733
 Conc: 0.50 ng/ml

Instrument :
 ECD_L
 ClientSampleId :



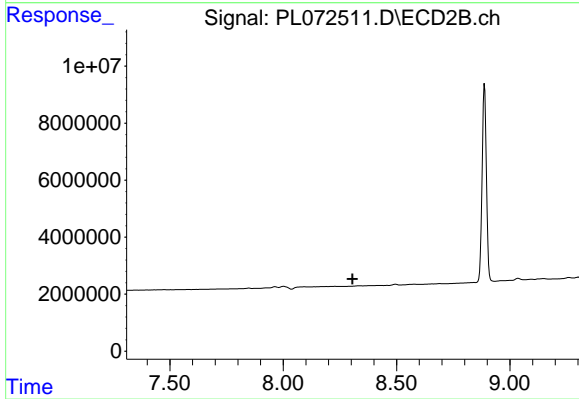
#25 Chlordane-3

R.T.: 8.228 min
 Delta R.T.: 0.003 min
 Response: 964371
 Conc: 3.23 ng/ml



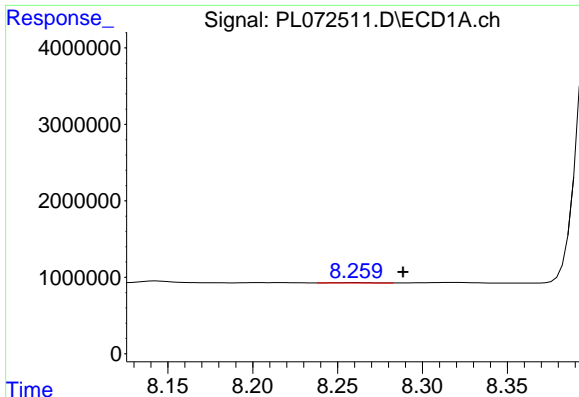
#26 Chlordane-4

R.T.: 7.343 min
 Delta R.T.: 0.005 min
 Response: 18069
 Conc: 0.25 ng/ml



#26 Chlordane-4

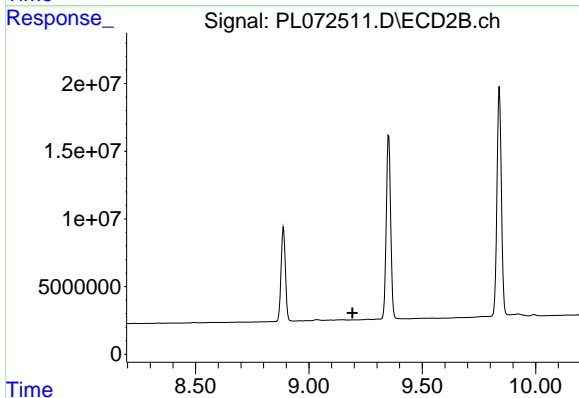
R.T.: 0.000 min
 Exp R.T. : 8.306 min
 Response: 0
 Conc: N.D.



#27 Chlordane-5

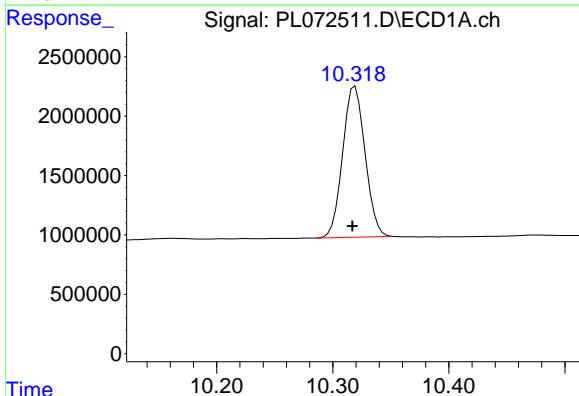
R.T.: 8.261 min
 Delta R.T.: -0.028 min
 Response: 62969
 Conc: 2.45 ng/ml

Instrument :
 ECD_L
 ClientSampleId :



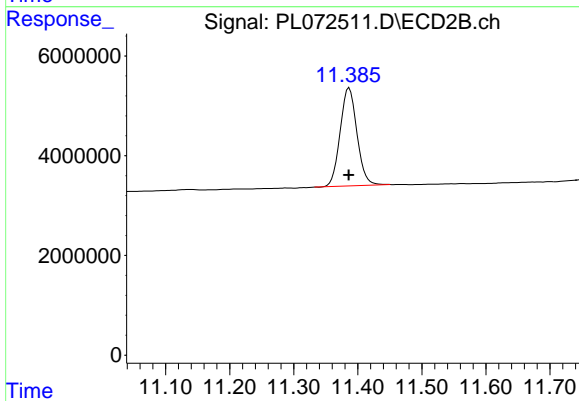
#27 Chlordane-5

R.T.: 0.000 min
 Exp R.T. : 9.193 min
 Response: 0
 Conc: N.D.



#28 Decachlorobiphenyl

R.T.: 10.319 min
 Delta R.T.: 0.002 min
 Response: 17043870
 Conc: 22.51 ng/ml



#28 Decachlorobiphenyl

R.T.: 11.387 min
 Delta R.T.: 0.000 min
 Response: 35902645
 Conc: 22.64 ng/ml