

Data Path : Z:\pestpcbsrv\HPCHEM1\ECD\_L\Data\PL021022\  
 Data File : PL072594.D  
 Signal(s) : Signal #1: ECD1A.ch Signal #2: ECD2B.ch  
 Acq On : 10 Feb 2022 13:50  
 Operator : AR\AJ  
 Sample : N1449-02  
 Misc :  
 ALS Vial : 10 Sample Multiplier: 1

Instrument :  
 ECD\_L  
 ClientSampleId :

Integration File signal 1: autoint1.e  
 Integration File signal 2: autoint2.e  
 Quant Time: Feb 11 00:47:41 2022  
 Quant Method : Z:\pestpcbsrv\HPCHEM1\ECD\_L\methods\PL020722.M  
 Quant Title : GC Extractables  
 QLast Update : Tue Feb 08 05:14:10 2022  
 Response via : Initial Calibration  
 Integrator: ChemStation

Volume Inj. : 1 µl  
 Signal #1 Phase : ZB-MR2 Signal #2 Phase: ZB-MR1  
 Signal #1 Info : 30M x 0.32mm x0.2 Signal #2 Info : 30M x 0.32mm x0.5µm

	Compound	RT#1	RT#2	Resp#1	Resp#2	ng/ml	ng/ml
-----							
System Monitoring Compounds							
1)	SA Tetrachlo...	4.554	5.491	8442235	28547101	17.533	16.526
28)	SA Decachlor...	10.317	11.385	7510797	14393111	9.921	9.076
Target Compounds							
2)	A alpha-BHC	5.266	6.072	362301	710510	0.549	0.297 #
3)	MA gamma-BHC...	5.681	0.000	103270	0	0.164	N.D. #
4)	MA Heptachlor	6.071f	0.000	319954	0	0.438	N.D. #
5)	MB Aldrin	6.405	0.000	33744	0	0.052	N.D. #
6)	B beta-BHC	6.071	0.000	319954	0	1.291	N.D. #
7)	B delta-BHC	6.332	7.016f	64431	481423	0.097	0.210 #
8)	B Heptachlo...	7.009f	7.924f	17635	150798	0.028	0.078 #
9)	A Endosulfan I	7.392	0.000	57433	0	0.098	N.D. #
10)	B gamma-Chl...	7.279	8.222	92583	922562	0.146	0.477 #
11)	B alpha-Chl...	7.339	8.278f	43010	94321	0.068	0.050 #
12)	B 4,4'-DDE	7.538f	0.000	68561	0	0.113	N.D. #
13)	MA Dieldrin	7.692	0.000	47395	0	0.075	N.D. #
14)	MA Endrin	8.000f	0.000	32991	0	0.056	N.D. #
15)	B Endosulfa...	8.259f	9.146f	212927	1474247	0.350	0.877 #
17)	MA 4,4'-DDT	0.000	9.352	0	275585	N.D.	0.180 #
18)	B Endrin al...	8.487	0.000	126201	0	0.290	N.D. #
19)	B Endosulfa...	8.705	0.000	163117	0	0.274	N.D. #
22)	Mirex	9.408	0.000	12636	0	0.021	N.D. #
23)	Chlordane-1	5.882	0.000	12877	0	0.694	N.D. #
24)	Chlordane-2	6.577	0.000	106200	0	4.200	N.D. #
25)	Chlordane-3	7.279	8.222	92583	922562	1.374	3.087 #
26)	Chlordane-4	7.339	8.278f	43010	94321	0.586	0.264 #
27)	Chlordane-5	8.259f	9.200	212927	167503	8.299	2.740 #

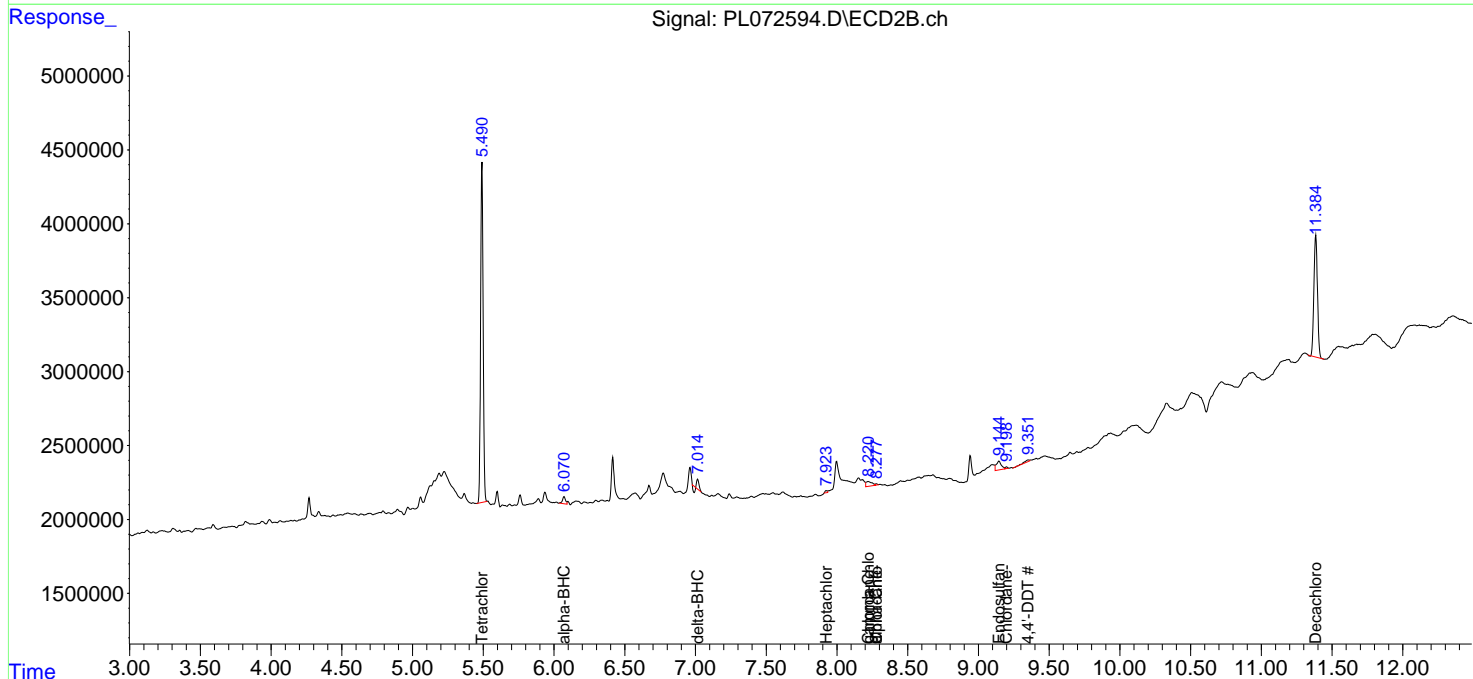
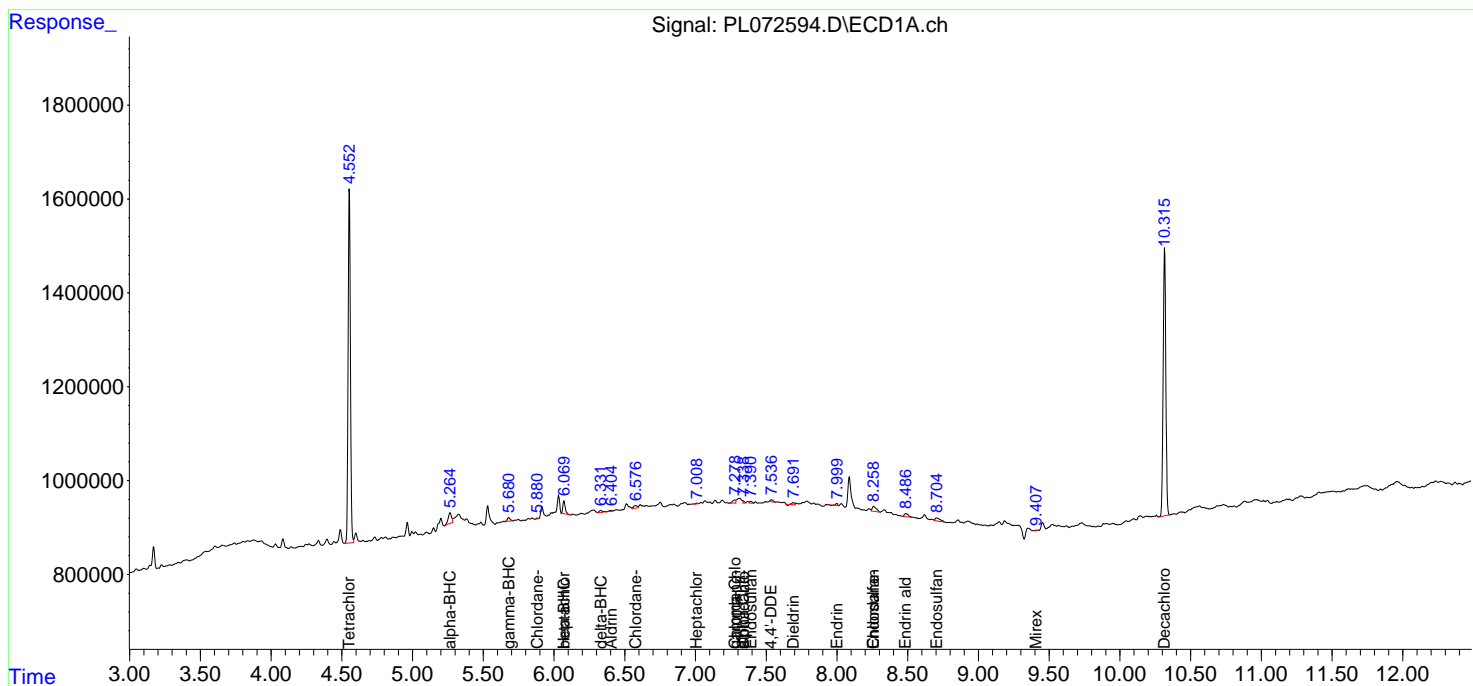
(f)=RT Delta > 1/2 Window (#)=Amounts differ by > 25% (m)=manual int.

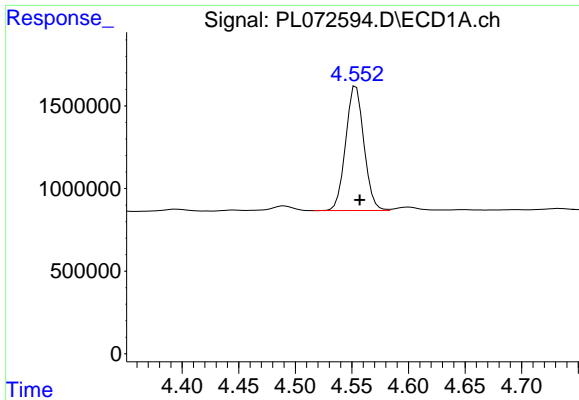
Data Path : Z:\pestpcbsrv\HPCHEM1\ECD\_L\Data\PL021022\  
 Data File : PL072594.D  
 Signal(s) : Signal #1: ECD1A.ch Signal #2: ECD2B.ch  
 Acq On : 10 Feb 2022 13:50  
 Operator : AR\AJ  
 Sample : N1449-02  
 Misc :  
 ALS Vial : 10 Sample Multiplier: 1

Instrument :  
 ECD\_L  
 ClientSampleId :

Integration File signal 1: autoint1.e  
 Integration File signal 2: autoint2.e  
 Quant Time: Feb 11 00:47:41 2022  
 Quant Method : Z:\pestpcbsrv\HPCHEM1\ECD\_L\methods\PL020722.M  
 Quant Title : GC Extractables  
 QLast Update : Tue Feb 08 05:14:10 2022  
 Response via : Initial Calibration  
 Integrator: ChemStation

Volume Inj. : 1 µl  
 Signal #1 Phase : ZB-MR2 Signal #2 Phase: ZB-MR1  
 Signal #1 Info : 30M x 0.32mm x0.2 Signal #2 Info : 30M x 0.32mm x0.5µm

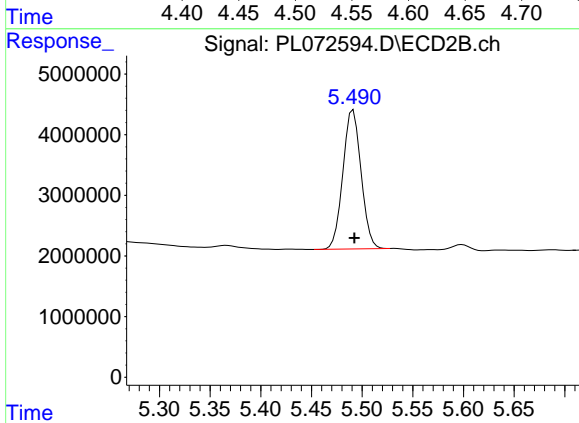




#1 Tetrachloro-m-xylene

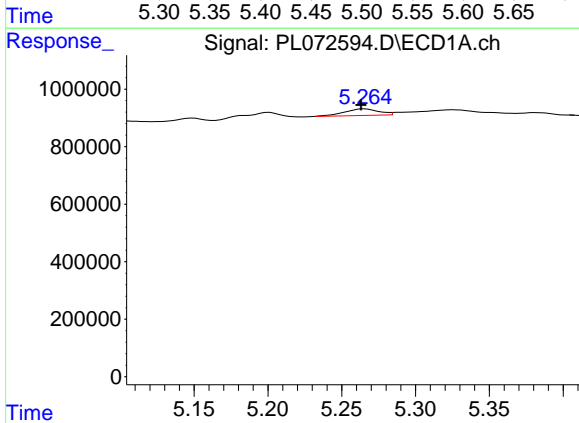
R.T.: 4.554 min  
 Delta R.T.: -0.003 min  
 Response: 8442235  
 Conc: 17.53 ng/ml

Instrument :  
 ECD\_L  
 ClientSampleId :



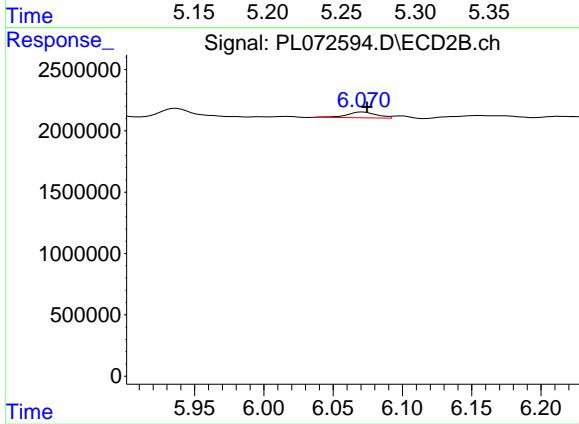
#1 Tetrachloro-m-xylene

R.T.: 5.491 min  
 Delta R.T.: -0.001 min  
 Response: 28547101  
 Conc: 16.53 ng/ml



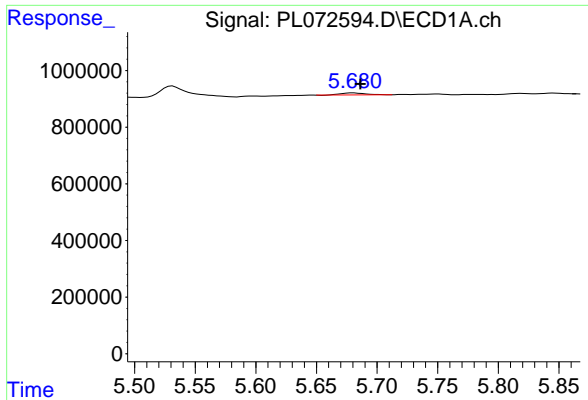
#2 alpha-BHC

R.T.: 5.266 min  
 Delta R.T.: 0.002 min  
 Response: 362301  
 Conc: 0.55 ng/ml



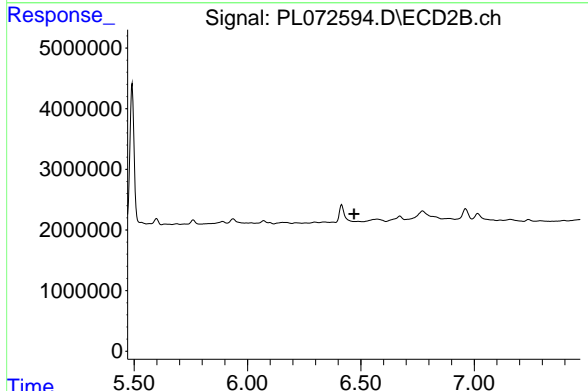
#2 alpha-BHC

R.T.: 6.072 min  
 Delta R.T.: -0.003 min  
 Response: 710510  
 Conc: 0.30 ng/ml

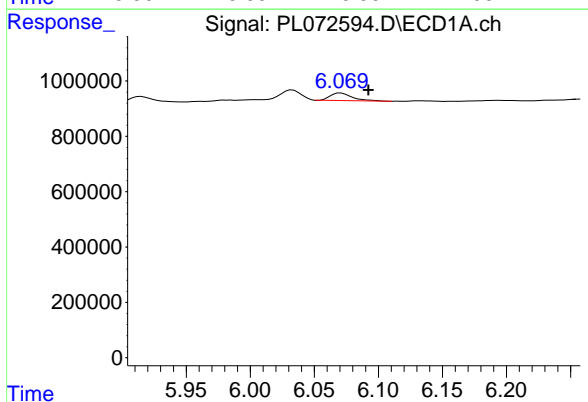


#3 gamma-BHC (Lindane)  
 R.T.: 5.681 min  
 Delta R.T.: -0.006 min  
 Response: 103270  
 Conc: 0.16 ng/ml

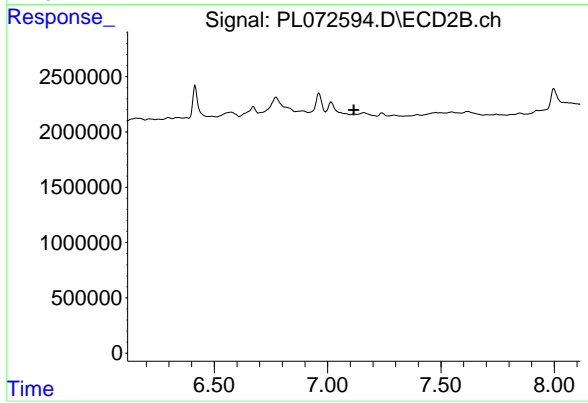
Instrument :  
 ECD\_L  
 ClientSampleId :



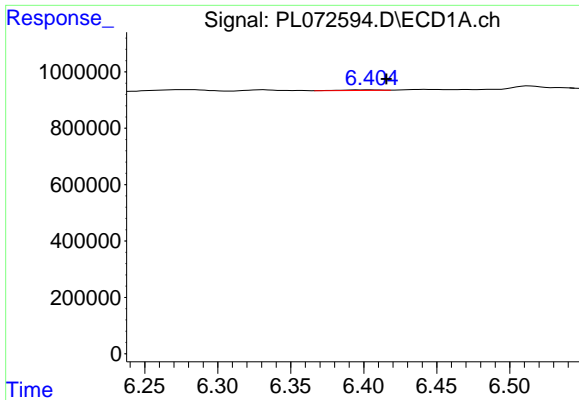
#3 gamma-BHC (Lindane)  
 R.T.: 0.000 min  
 Exp R.T. : 6.470 min  
 Response: 0  
 Conc: N.D.



#4 Heptachlor  
 R.T.: 6.071 min  
 Delta R.T.: -0.021 min  
 Response: 319954  
 Conc: 0.44 ng/ml

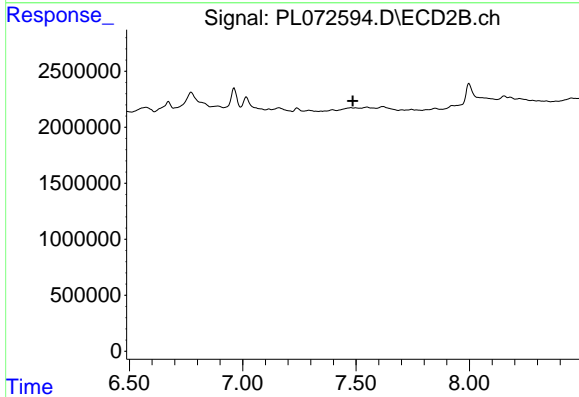


#4 Heptachlor  
 R.T.: 0.000 min  
 Exp R.T. : 7.116 min  
 Response: 0  
 Conc: N.D.

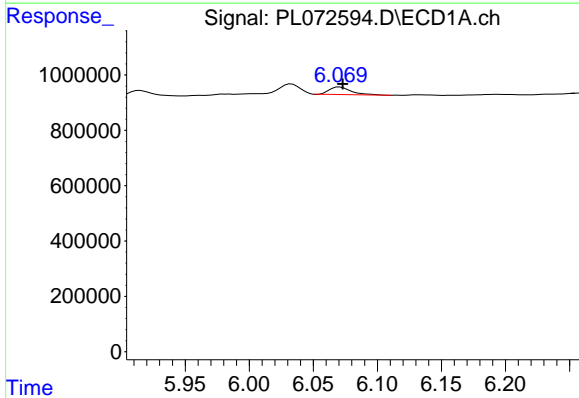


#5 Aldrin  
 R.T.: 6.405 min  
 Delta R.T.: -0.011 min  
 Response: 33744  
 Conc: 0.05 ng/ml

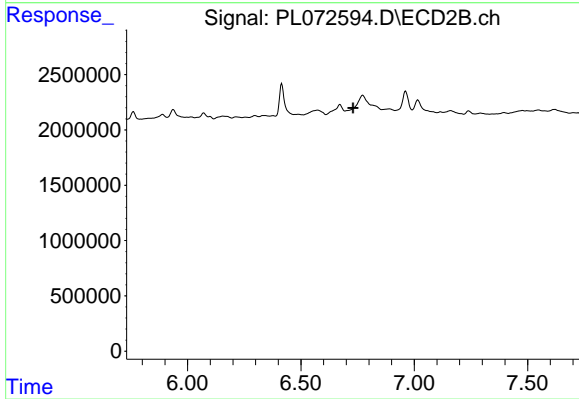
Instrument :  
 ECD\_L  
 ClientSampleId :



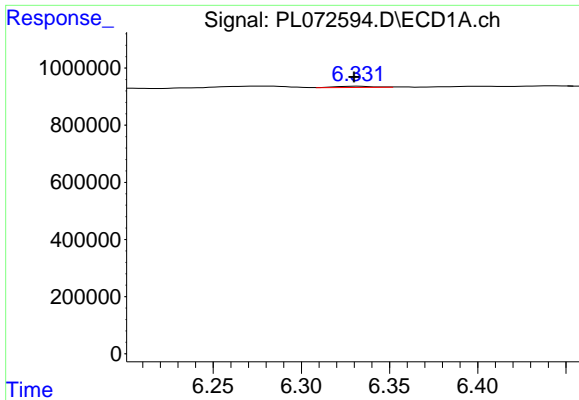
#5 Aldrin  
 R.T.: 0.000 min  
 Exp R.T. : 7.486 min  
 Response: 0  
 Conc: N.D.



#6 beta-BHC  
 R.T.: 6.071 min  
 Delta R.T.: -0.002 min  
 Response: 319954  
 Conc: 1.29 ng/ml



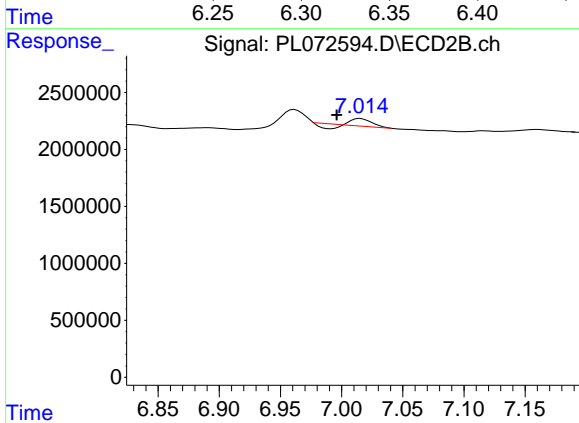
#6 beta-BHC  
 R.T.: 0.000 min  
 Exp R.T. : 6.731 min  
 Response: 0  
 Conc: N.D.



#7 delta-BHC

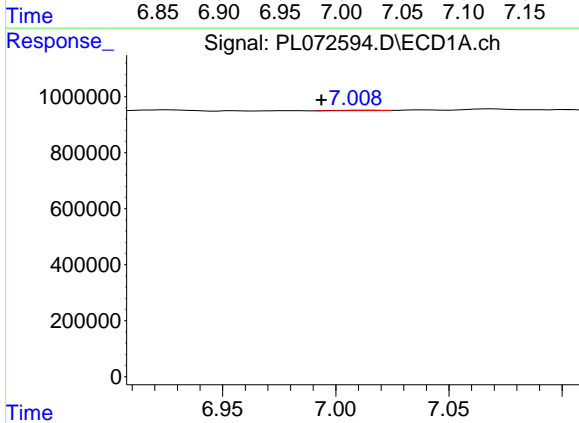
R.T.: 6.332 min  
 Delta R.T.: 0.002 min  
 Response: 64431  
 Conc: 0.10 ng/ml

Instrument :  
 ECD\_L  
 ClientSampleId :



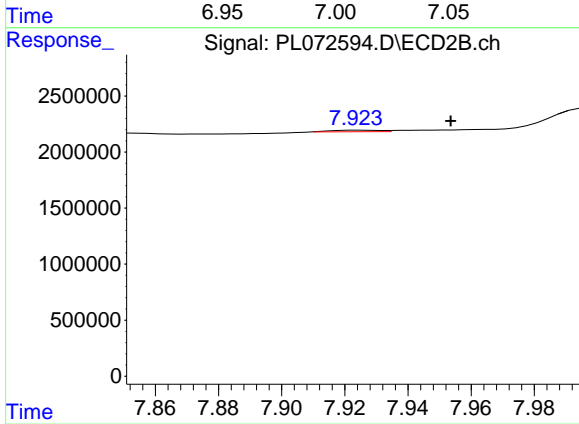
#7 delta-BHC

R.T.: 7.016 min  
 Delta R.T.: 0.020 min  
 Response: 481423  
 Conc: 0.21 ng/ml



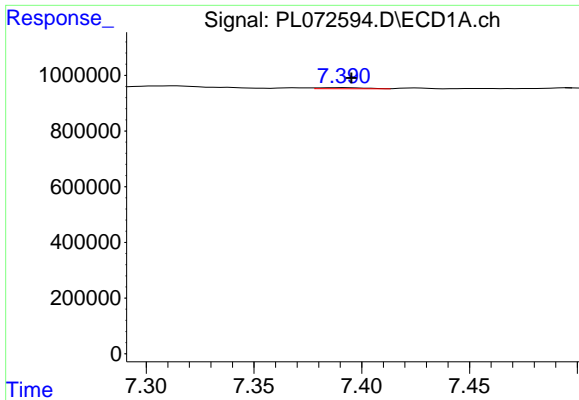
#8 Heptachlor epoxide

R.T.: 7.009 min  
 Delta R.T.: 0.016 min  
 Response: 17635  
 Conc: 0.03 ng/ml



#8 Heptachlor epoxide

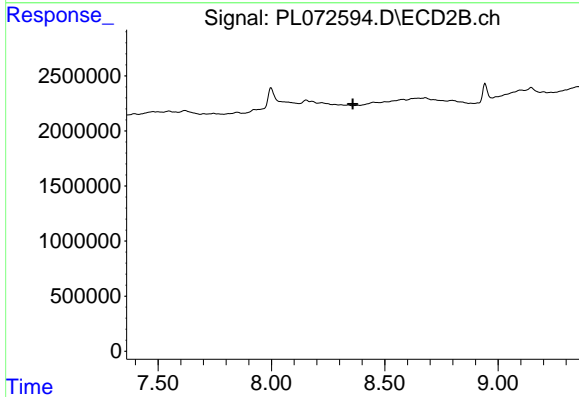
R.T.: 7.924 min  
 Delta R.T.: -0.029 min  
 Response: 150798  
 Conc: 0.08 ng/ml



#9 Endosulfan I

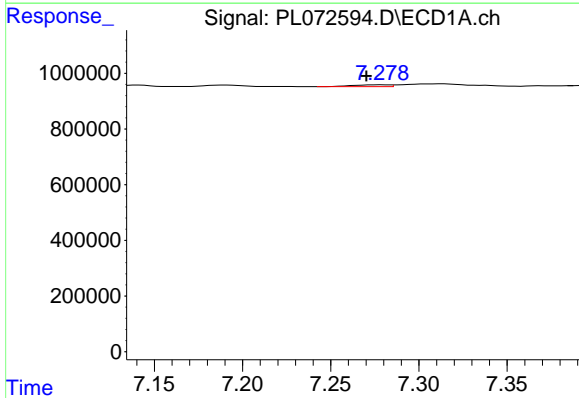
R.T.: 7.392 min  
 Delta R.T.: -0.003 min  
 Response: 57433  
 Conc: 0.10 ng/ml

Instrument :  
 ECD\_L  
 ClientSampleId :



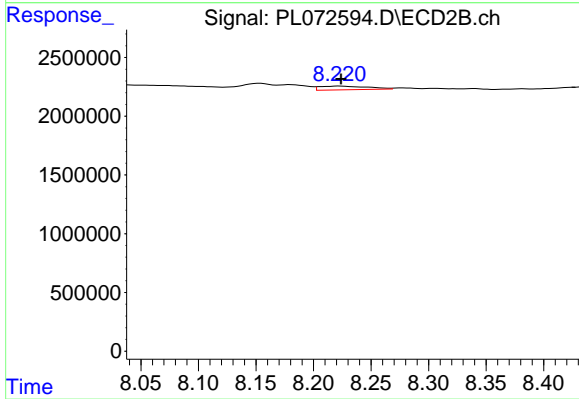
#9 Endosulfan I

R.T.: 0.000 min  
 Exp R.T. : 8.359 min  
 Response: 0  
 Conc: N.D.



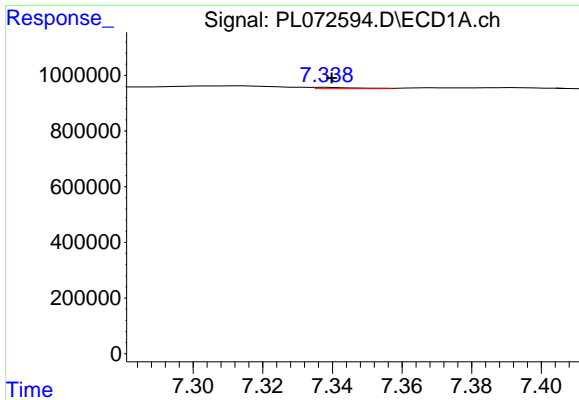
#10 gamma-Chlordane

R.T.: 7.279 min  
 Delta R.T.: 0.009 min  
 Response: 92583  
 Conc: 0.15 ng/ml



#10 gamma-Chlordane

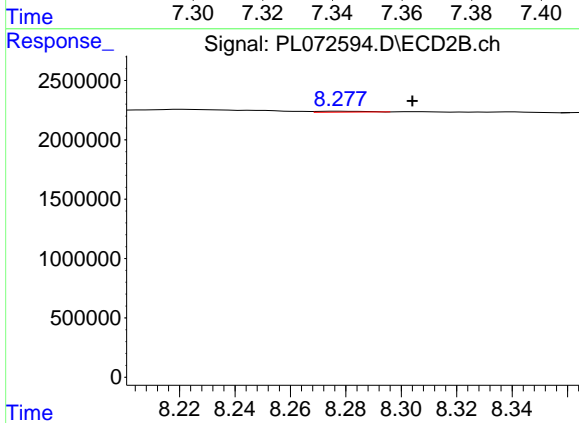
R.T.: 8.222 min  
 Delta R.T.: -0.002 min  
 Response: 922562  
 Conc: 0.48 ng/ml



#11 alpha-Chlordane

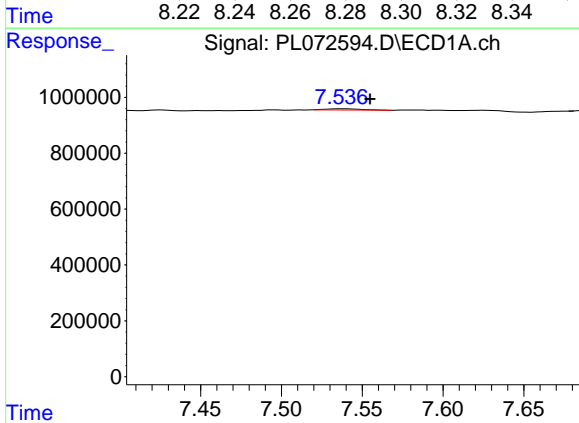
R.T.: 7.339 min  
 Delta R.T.: -0.001 min  
 Response: 43010  
 Conc: 0.07 ng/ml

Instrument :  
 ECD\_L  
 ClientSampleId :



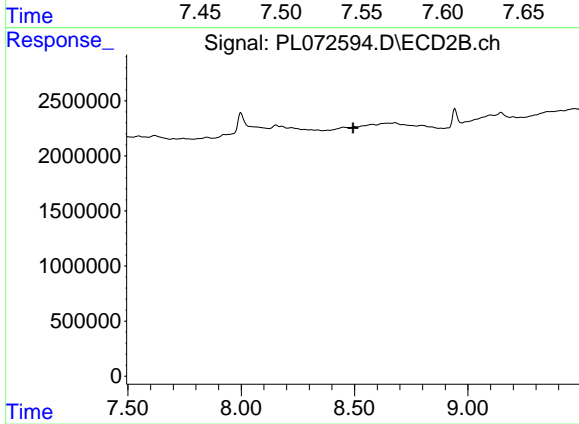
#11 alpha-Chlordane

R.T.: 8.278 min  
 Delta R.T.: -0.026 min  
 Response: 94321  
 Conc: 0.05 ng/ml



#12 4,4'-DDE

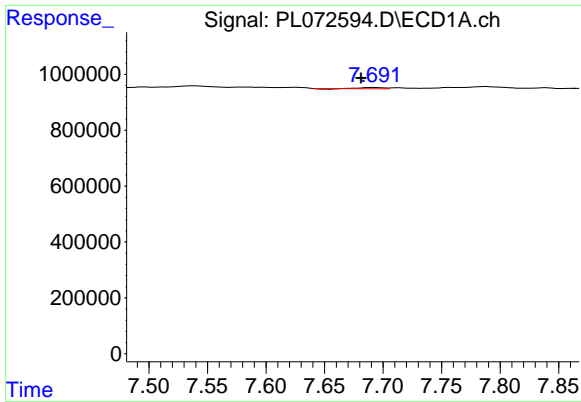
R.T.: 7.538 min  
 Delta R.T.: -0.017 min  
 Response: 68561  
 Conc: 0.11 ng/ml



#12 4,4'-DDE

R.T.: 0.000 min  
 Exp R.T. : 8.494 min  
 Response: 0  
 Conc: N.D.

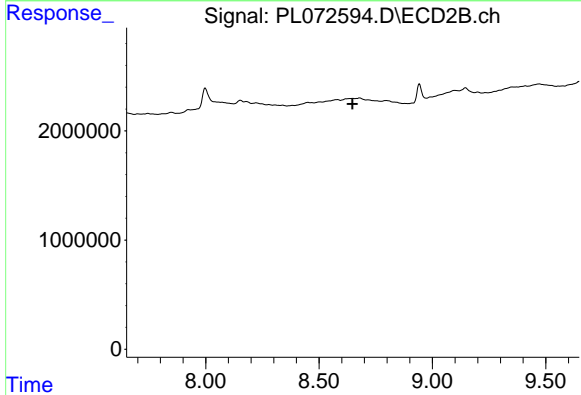




#13 Dieldrin

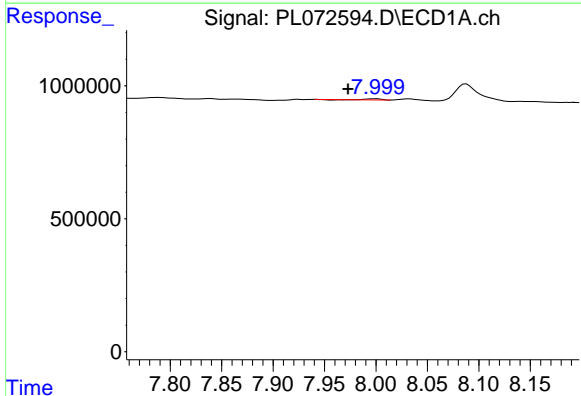
R.T.: 7.692 min  
 Delta R.T.: 0.011 min  
 Response: 47395  
 Conc: 0.08 ng/ml

Instrument :  
 ECD\_L  
 ClientSampleId :



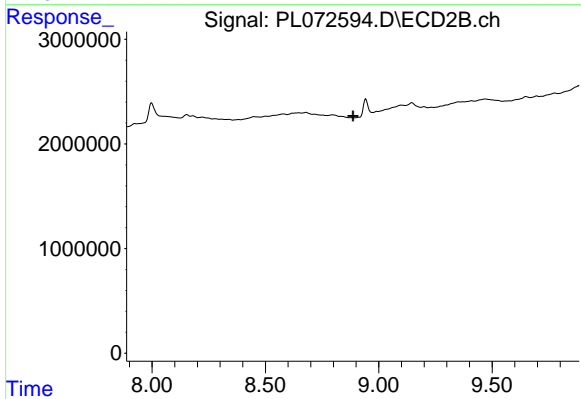
#13 Dieldrin

R.T.: 0.000 min  
 Exp R.T. : 8.648 min  
 Response: 0  
 Conc: N.D.



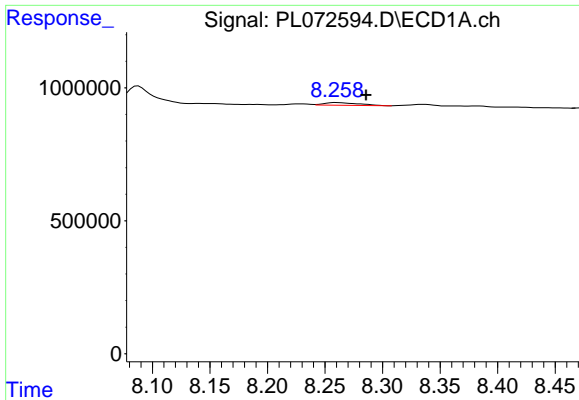
#14 Endrin

R.T.: 8.000 min  
 Delta R.T.: 0.028 min  
 Response: 32991  
 Conc: 0.06 ng/ml



#14 Endrin

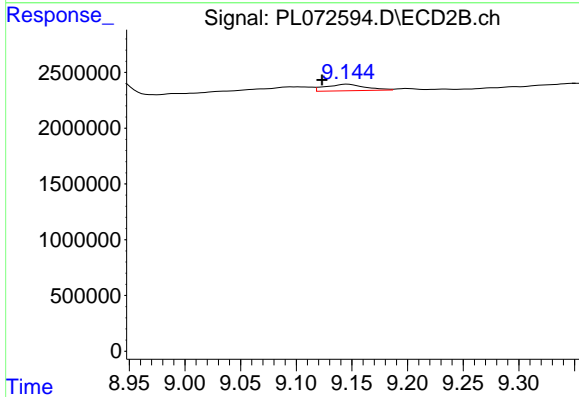
R.T.: 0.000 min  
 Exp R.T. : 8.887 min  
 Response: 0  
 Conc: N.D.



#15 Endosulfan II

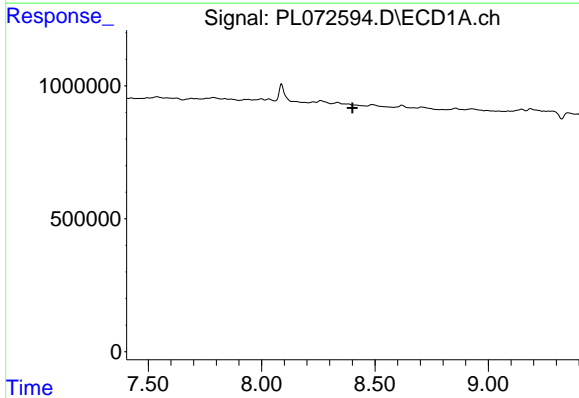
R.T.: 8.259 min  
 Delta R.T.: -0.026 min  
 Response: 212927  
 Conc: 0.35 ng/ml

Instrument :  
 ECD\_L  
 ClientSampleId :



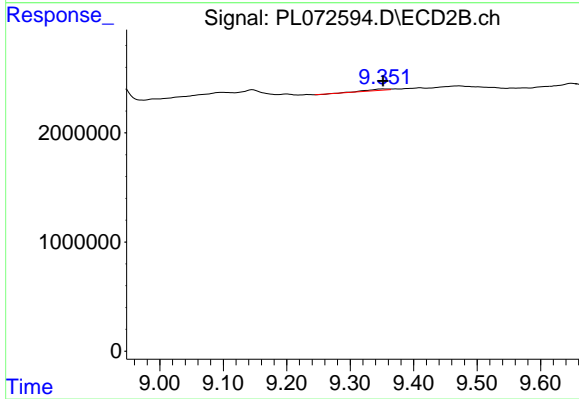
#15 Endosulfan II

R.T.: 9.146 min  
 Delta R.T.: 0.023 min  
 Response: 1474247  
 Conc: 0.88 ng/ml



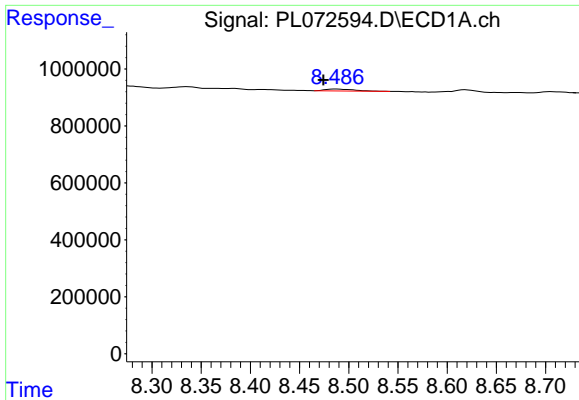
#17 4,4'-DDT

R.T.: 0.000 min  
 Exp R.T. : 8.401 min  
 Response: 0  
 Conc: N.D.



#17 4,4'-DDT

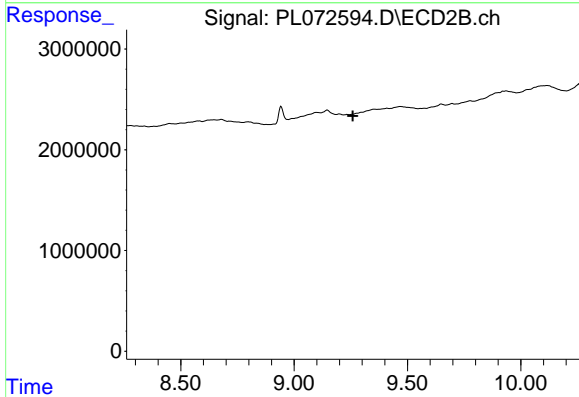
R.T.: 9.352 min  
 Delta R.T.: 0.000 min  
 Response: 275585  
 Conc: 0.18 ng/ml



#18 Endrin aldehyde

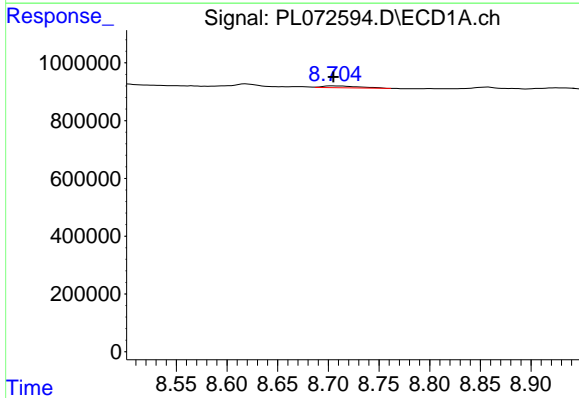
R.T.: 8.487 min  
 Delta R.T.: 0.013 min  
 Response: 126201  
 Conc: 0.29 ng/ml

Instrument :  
 ECD\_L  
 ClientSampleId :



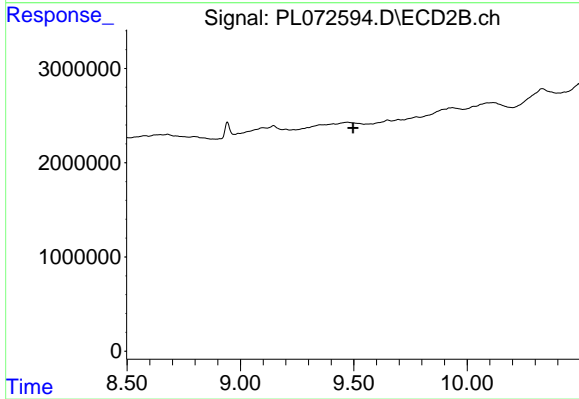
#18 Endrin aldehyde

R.T.: 0.000 min  
 Exp R.T. : 9.258 min  
 Response: 0  
 Conc: N.D.



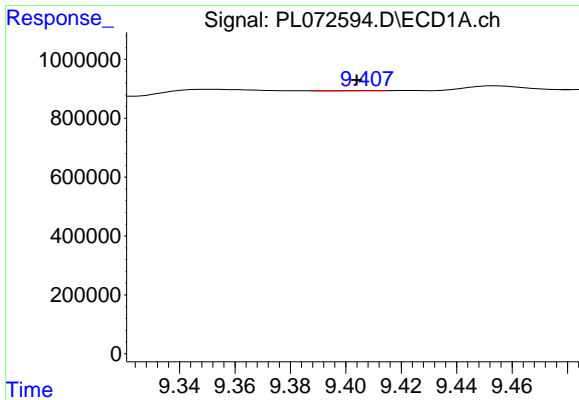
#19 Endosulfan Sulfate

R.T.: 8.705 min  
 Delta R.T.: 0.000 min  
 Response: 163117  
 Conc: 0.27 ng/ml



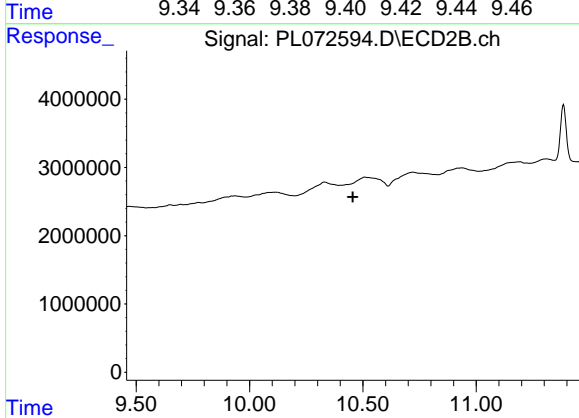
#19 Endosulfan Sulfate

R.T.: 0.000 min  
 Exp R.T. : 9.497 min  
 Response: 0  
 Conc: N.D.

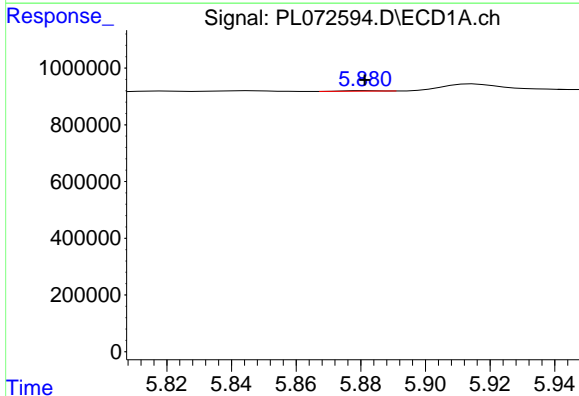


#22 Mirex  
 R.T.: 9.408 min  
 Delta R.T.: 0.004 min  
 Response: 12636  
 Conc: 0.02 ng/ml

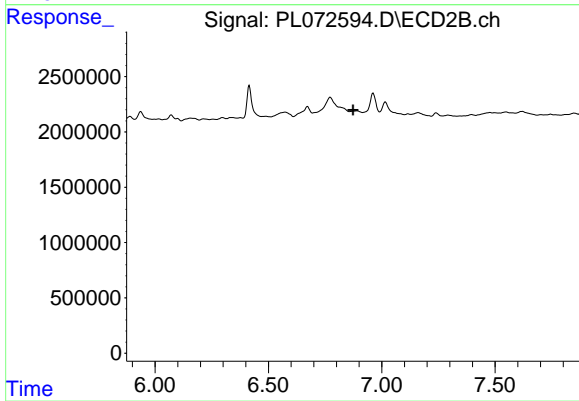
Instrument :  
 ECD\_L  
 ClientSampleId :



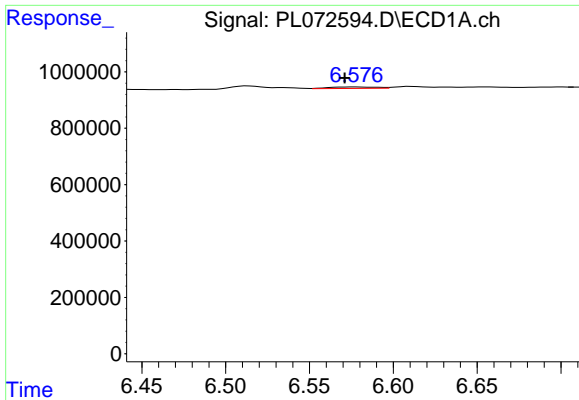
#22 Mirex  
 R.T.: 0.000 min  
 Exp R.T. : 10.456 min  
 Response: 0  
 Conc: N.D.



#23 Chlordane-1  
 R.T.: 5.882 min  
 Delta R.T.: 0.000 min  
 Response: 12877  
 Conc: 0.69 ng/ml



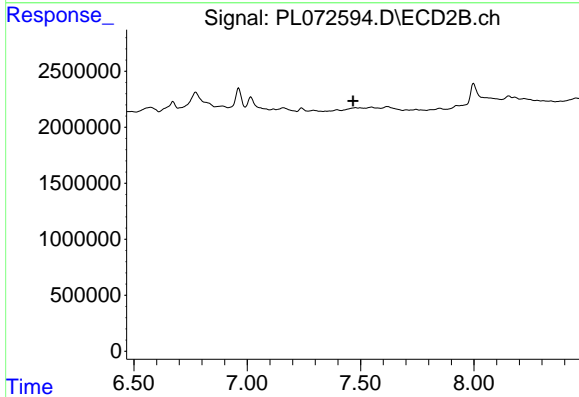
#23 Chlordane-1  
 R.T.: 0.000 min  
 Exp R.T. : 6.874 min  
 Response: 0  
 Conc: N.D.



#24 Chlordane-2

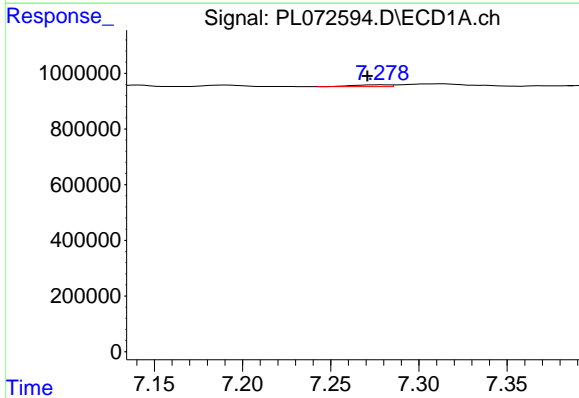
R.T.: 6.577 min  
 Delta R.T.: 0.006 min  
 Response: 106200  
 Conc: 4.20 ng/ml

Instrument :  
 ECD\_L  
 ClientSampleId :



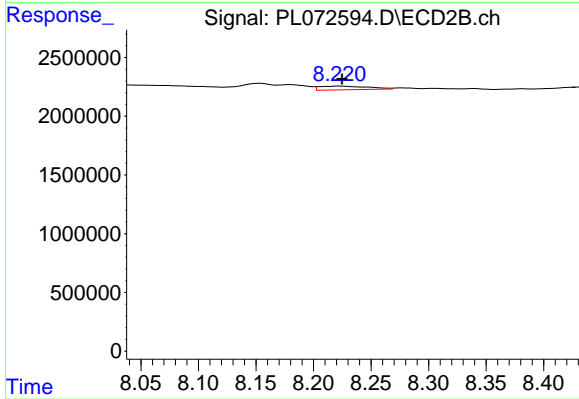
#24 Chlordane-2

R.T.: 0.000 min  
 Exp R.T. : 7.467 min  
 Response: 0  
 Conc: N.D.



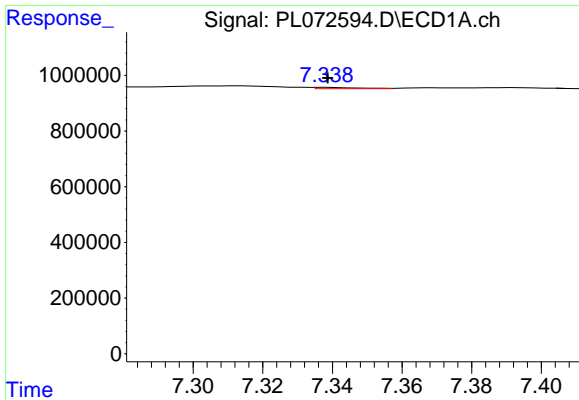
#25 Chlordane-3

R.T.: 7.279 min  
 Delta R.T.: 0.008 min  
 Response: 92583  
 Conc: 1.37 ng/ml



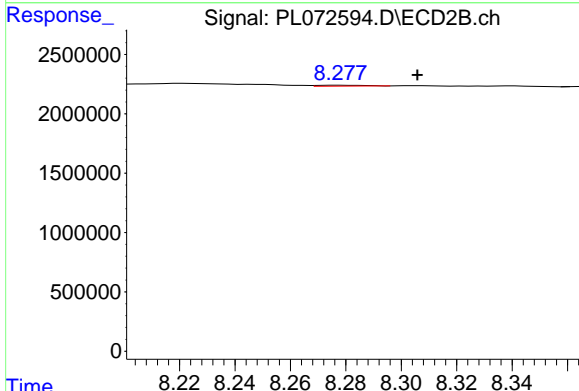
#25 Chlordane-3

R.T.: 8.222 min  
 Delta R.T.: -0.003 min  
 Response: 922562  
 Conc: 3.09 ng/ml

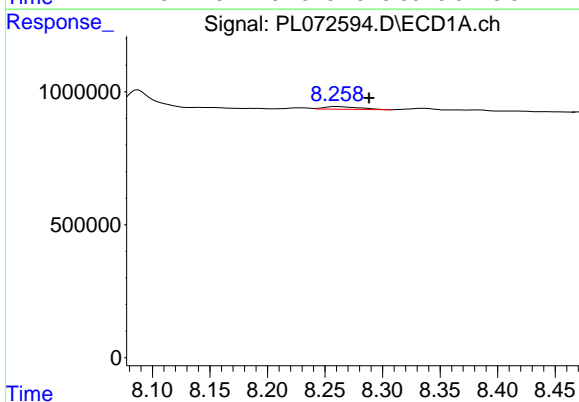


#26 Chlordane-4  
 R.T.: 7.339 min  
 Delta R.T.: 0.000 min  
 Response: 43010  
 Conc: 0.59 ng/ml

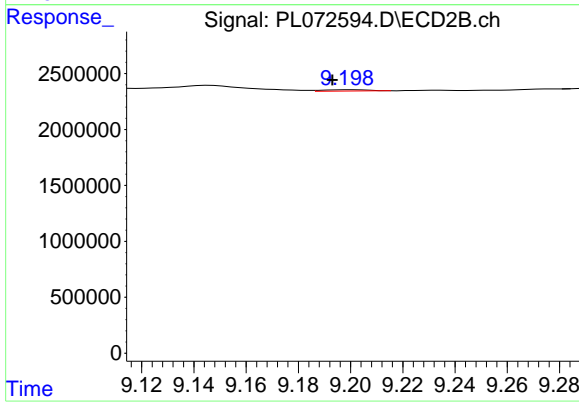
Instrument :  
 ECD\_L  
 ClientSampleId :



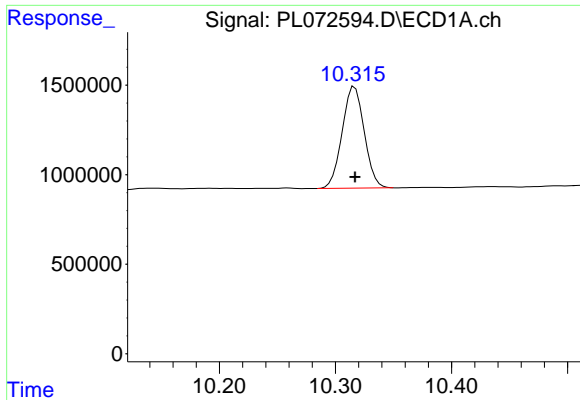
#26 Chlordane-4  
 R.T.: 8.278 min  
 Delta R.T.: -0.027 min  
 Response: 94321  
 Conc: 0.26 ng/ml



#27 Chlordane-5  
 R.T.: 8.259 min  
 Delta R.T.: -0.029 min  
 Response: 212927  
 Conc: 8.30 ng/ml



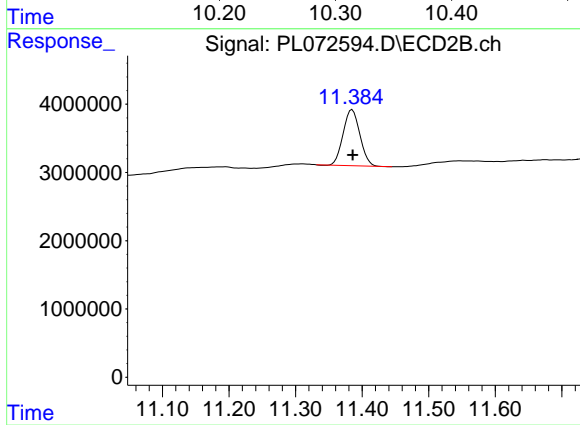
#27 Chlordane-5  
 R.T.: 9.200 min  
 Delta R.T.: 0.007 min  
 Response: 167503  
 Conc: 2.74 ng/ml



#28 Decachlorobiphenyl

R.T.: 10.317 min  
Delta R.T.: 0.000 min  
Response: 7510797  
Conc: 9.92 ng/ml

Instrument :  
ECD\_L  
ClientSampleId :



#28 Decachlorobiphenyl

R.T.: 11.385 min  
Delta R.T.: 0.000 min  
Response: 14393111  
Conc: 9.08 ng/ml