

Data Path : Z:\pestpcbsrv\HPCHEM1\ECD_L\Data\PL021119\
 Data File : PL044645.D
 Signal(s) : Signal #1: ECD1A.ch Signal #2: ECD2B.ch
 Acq On : 11 Feb 2019 21:48
 Operator : AJ\SJ
 Sample : K1449-05
 Misc :
 ALS Vial : 31 Sample Multiplier: 1

Instrument :
 ECD_L
 ClientSampleId :
 B-11-OW

Integration File signal 1: autoint1.e
 Integration File signal 2: autoint2.e
 Quant Time: Feb 11 23:13:32 2019
 Quant Method : Z:\pestpcbsrv\HPCHEM1\ECD_L\methods\PL020619.M
 Quant Title : GC Extractables
 QLast Update : Thu Feb 07 01:39:50 2019
 Response via : Initial Calibration
 Integrator: ChemStation

Volume Inj. : 2 µl
 Signal #1 Phase : ZB-MR1 Signal #2 Phase: ZB-MR2
 Signal #1 Info : 30M x 0.32mm x0.5 Signal #2 Info : 30M x 0.32mm x0.25µm

| Compound | RT#1 | RT#2 | Resp#1 | Resp#2 | ng/ml | ng/ml |
|-----------------------------|-------|-------|----------|----------|--------|--------|
| ----- | | | | | | |
| System Monitoring Compounds | | | | | | |
| 1) SA Tetrachlo... | 3.365 | 3.984 | 99582736 | 31517873 | 13.995 | 13.416 |
| 28) SA Decachlor... | 8.047 | 9.041 | 67293749 | 20345854 | 9.226 | 9.186 |
| Target Compounds | | | | | | |
| 11) B alpha-Chl... | 5.323 | 0.000 | 10660209 | 0 | 1.115 | N.D. # |
| ----- | | | | | | |

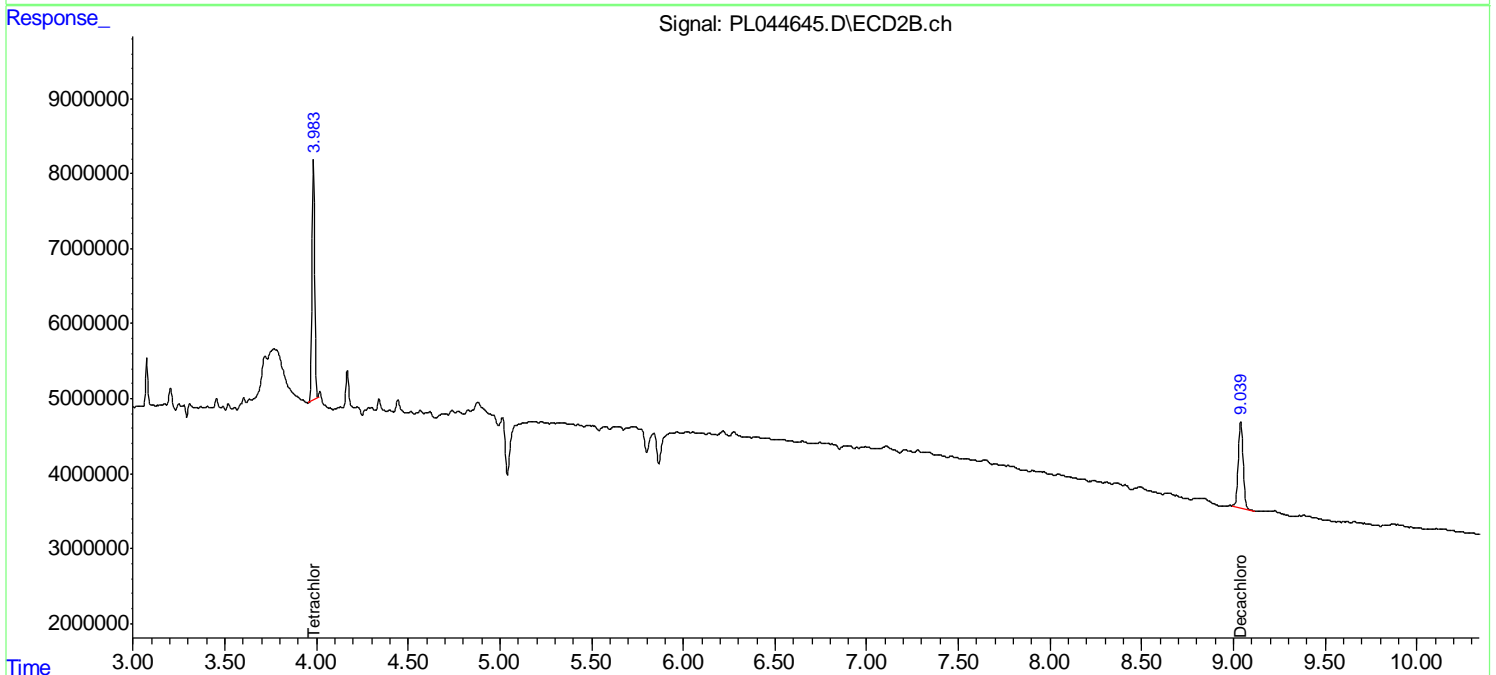
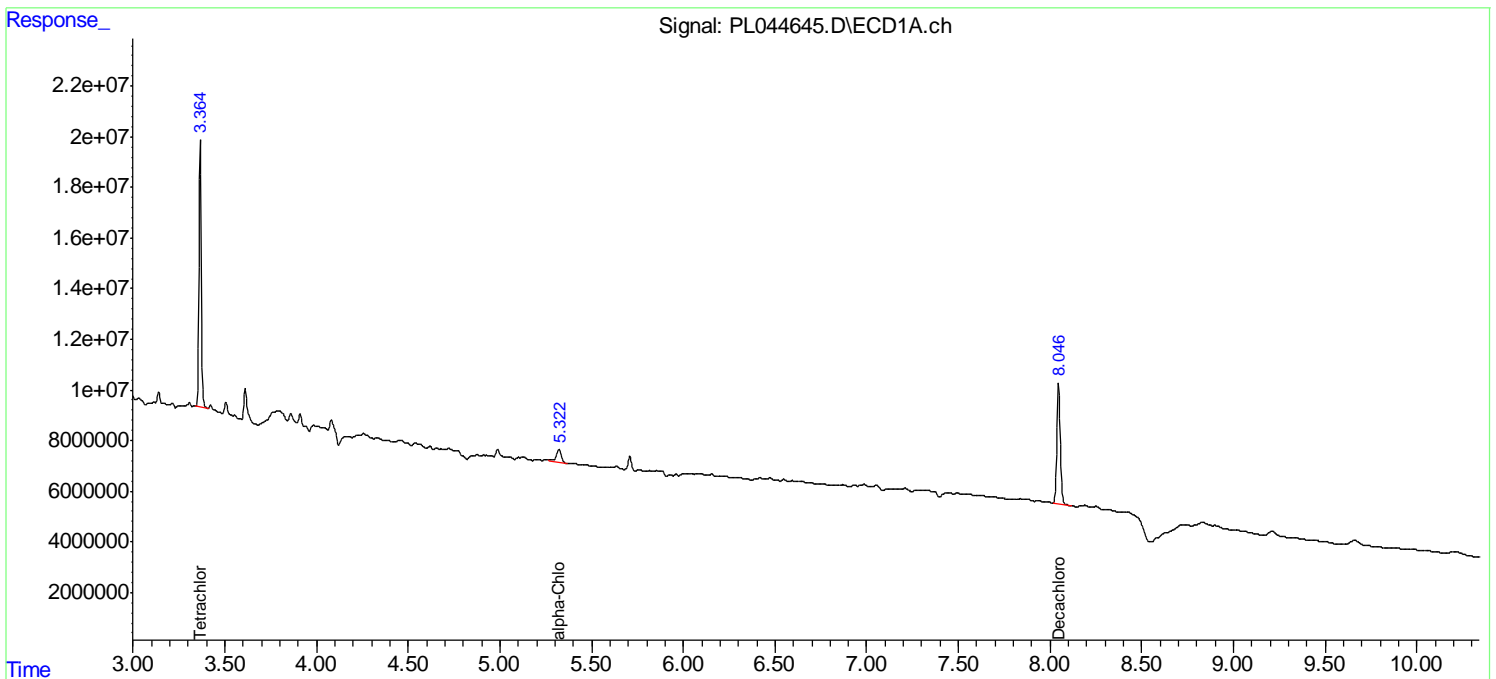
(f)=RT Delta > 1/2 Window (#)=Amounts differ by > 25% (m)=manual int.

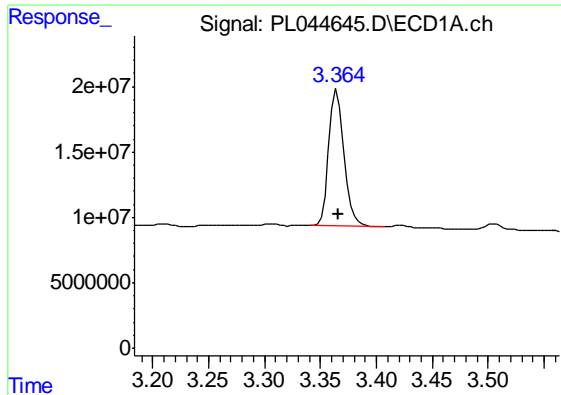
Data Path : Z:\pestpcbsrv\HPCHEM1\ECD_L\Data\PL021119\
 Data File : PL044645.D
 Signal(s) : Signal #1: ECD1A.ch Signal #2: ECD2B.ch
 Acq On : 11 Feb 2019 21:48
 Operator : AJ\SJ
 Sample : K1449-05
 Misc :
 ALS Vial : 31 Sample Multiplier: 1

Instrument :
 ECD_L
 ClientSampleID :
 B-11-OW

Integration File signal 1: autoint1.e
 Integration File signal 2: autoint2.e
 Quant Time: Feb 11 23:13:32 2019
 Quant Method : Z:\pestpcbsrv\HPCHEM1\ECD_L\methods\PL020619.M
 Quant Title : GC Extractables
 QLast Update : Thu Feb 07 01:39:50 2019
 Response via : Initial Calibration
 Integrator: ChemStation

Volume Inj. : 2 µl
 Signal #1 Phase : ZB-MR1 Signal #2 Phase: ZB-MR2
 Signal #1 Info : 30M x 0.32mm x0.5 Signal #2 Info : 30M x 0.32mm x0.25µm

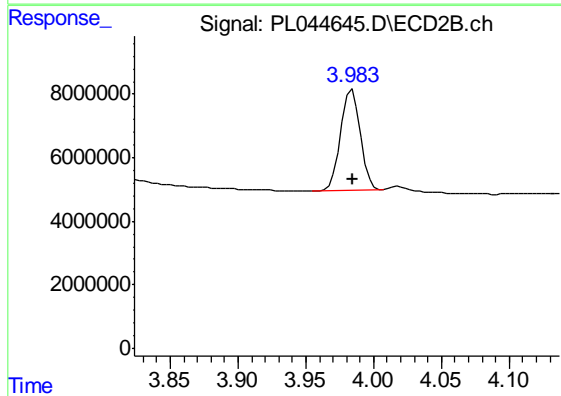




#1 Tetrachloro-m-xylene

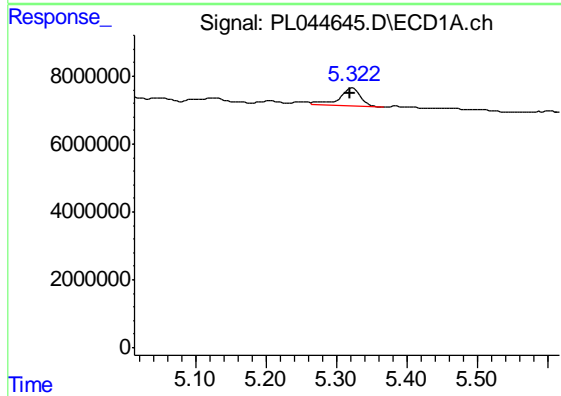
R.T.: 3.365 min
 Delta R.T.: 0.000 min
 Response: 99582736
 Conc: 13.99 ng/ml

Instrument :
 ECD_L
 ClientSampleId :
 B-11-OW



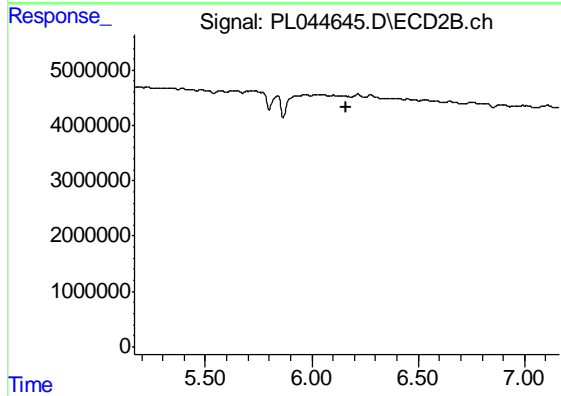
#1 Tetrachloro-m-xylene

R.T.: 3.984 min
 Delta R.T.: 0.000 min
 Response: 31517873
 Conc: 13.42 ng/ml



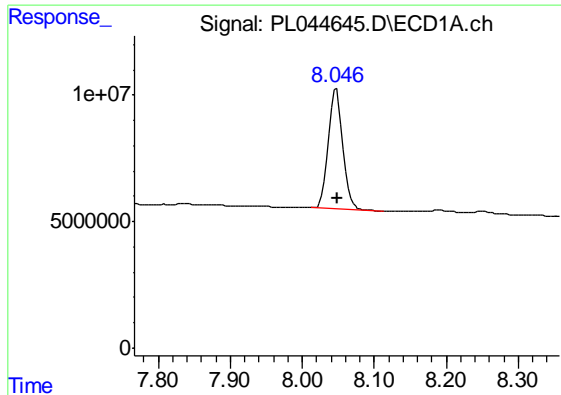
#11 alpha-Chlordane

R.T.: 5.323 min
 Delta R.T.: 0.004 min
 Response: 10660209
 Conc: 1.11 ng/ml



#11 alpha-Chlordane

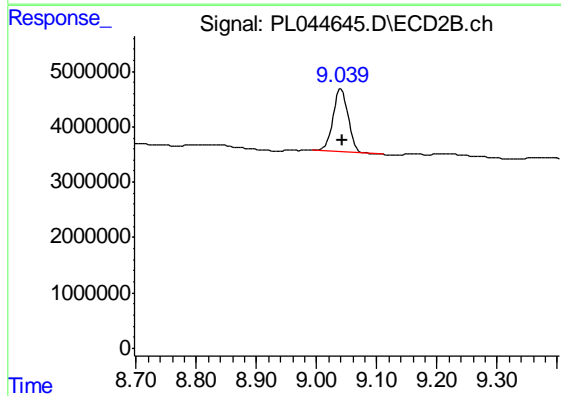
R.T.: 0.000 min
 Exp R.T. : 6.164 min
 Response: 0
 Conc: N.D.



#28 Decachlorobiphenyl

R.T.: 8.047 min
Delta R.T.: -0.002 min
Response: 67293749
Conc: 9.23 ng/ml

Instrument :
ECD_L
ClientSampleId :
B-11-OW



#28 Decachlorobiphenyl

R.T.: 9.041 min
Delta R.T.: -0.002 min
Response: 20345854
Conc: 9.19 ng/ml