

Data Path : Z:\pestpcbsrv\HPCHEM1\ECD\_L\Data\PL021122\  
 Data File : PL072629.D  
 Signal(s) : Signal #1: ECD1A.ch Signal #2: ECD2B.ch  
 Acq On : 11 Feb 2022 19:57  
 Operator : AR\AJ  
 Sample : N1505-01  
 Misc :  
 ALS Vial : 23 Sample Multiplier: 1

Instrument :  
 ECD\_L  
 ClientSampleId :  
 SU-02-021022

Integration File signal 1: autoint1.e  
 Integration File signal 2: autoint2.e  
 Quant Time: Feb 12 00:45:59 2022  
 Quant Method : Z:\pestpcbsrv\HPCHEM1\ECD\_L\methods\PL020722.M  
 Quant Title : GC Extractables  
 QLast Update : Tue Feb 08 05:14:10 2022  
 Response via : Initial Calibration  
 Integrator: ChemStation

Volume Inj. : 1 µl  
 Signal #1 Phase : ZB-MR2 Signal #2 Phase: ZB-MR1  
 Signal #1 Info : 30M x 0.32mm x0.2 Signal #2 Info : 30M x 0.32mm x0.5µm

Compound	RT#1	RT#2	Resp#1	Resp#2	ng/ml	ng/ml
-----						
System Monitoring Compounds						
1) SA Tetrachlo...	4.555	5.490	8325179	12043376	17.290	6.972 #
2) SA Decachlor...	10.316	11.384	7504959	16095525	9.913	10.150
Target Compounds						
2) A alpha-BHC	5.274	6.077	190402	1305592	0.289	0.545 #
3) MA gamma-BHC...	0.000	6.469	0	3665113	N.D.	1.592 #
5) MB Aldrin	6.418	7.494	999730	1122825	1.548	0.525 #
6) B beta-BHC	0.000	6.716f	0	2631259	N.D.	2.581 #
7) B delta-BHC	6.335	7.007	1385923	934223	2.093	0.408 #
8) B Heptachlo...	6.996	0.000	191927	0	0.304	N.D. #
9) A Endosulfan I	7.415f	8.359	329109	3312427	0.563	1.893 #
10) B gamma-Chl...	7.290f	8.226	23764	4232005	0.038	2.188 #
11) B alpha-Chl...	7.338	8.300	593182	9418223	0.932	4.957 #
12) B 4,4'-DDE	7.554	8.475f	1485816	1460812	2.445	0.782 #
13) MA Dieldrin	7.682	8.666f	859071	381822	1.360	0.205 #
14) MA Endrin	7.955f	0.000	80089	0	0.137	N.D. #
15) B Endosulfa...	8.282	9.135	174161	1816851	0.286	1.081 #
16) A 4,4'-DDD	8.112f	0.000	177577	0	0.369	N.D. #
17) MA 4,4'-DDT	8.400	9.351	1377947	2569122	2.561	1.678 #
18) B Endrin al...	8.483	9.285f	228537	130652	0.524	0.116 #
19) B Endosulfa...	0.000	9.515f	0	653600	N.D.	0.437 #
20) A Methoxychlor	8.989	0.000	18657	0	0.053	N.D. #
21) B Endrin ke...	9.246f	10.011f	2866	745800	0.004	0.468 #
22) Mirex	9.415	0.000	85812	0	0.145	N.D. #
23) Chlordane-1	5.879	6.895f	1218056	-542306	65.628	N.D. #
24) Chlordane-2	6.589f	7.494f	2967862	1122825	117.370	14.580 #
25) Chlordane-3	7.290f	8.226	23764	4232005	0.353	14.162 #
26) Chlordane-4	7.338	8.300	593182	9418223	8.084	26.397 #
27) Chlordane-5	8.282	9.181	174161	863440	6.788	14.125 #

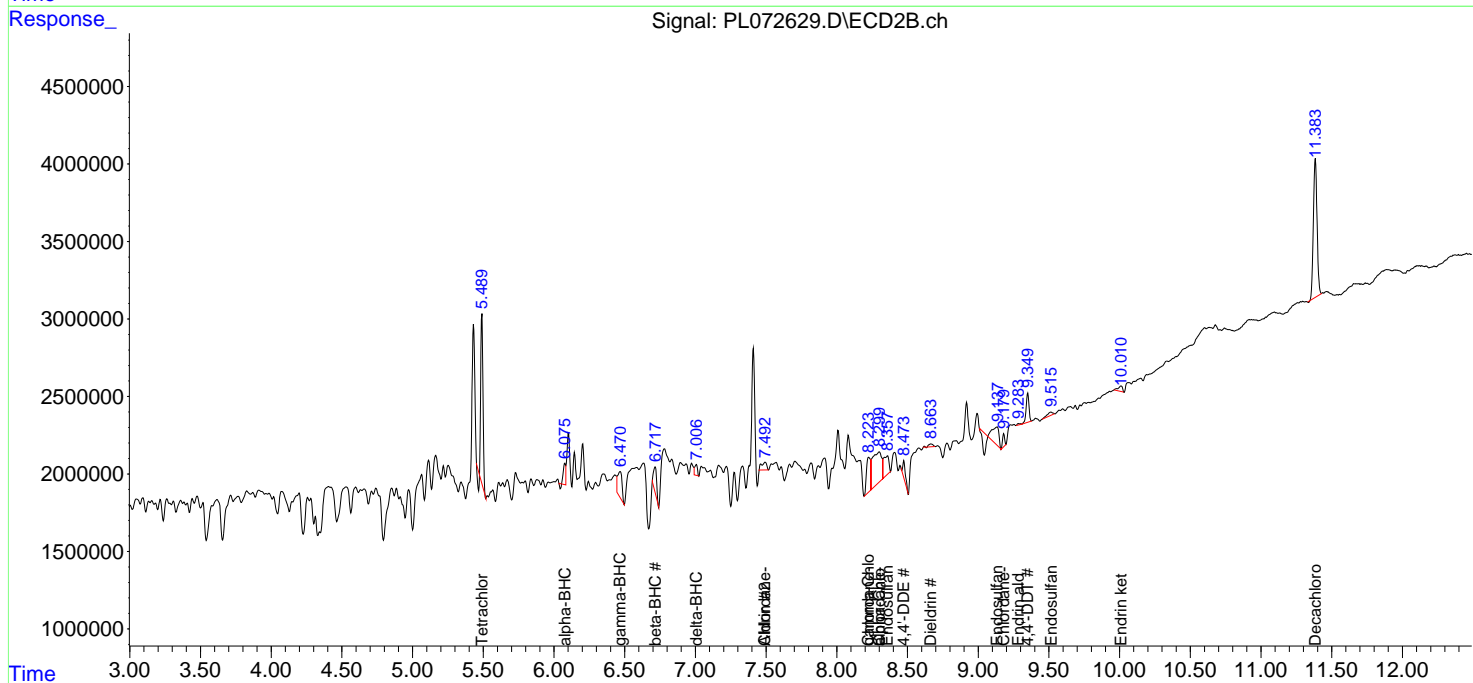
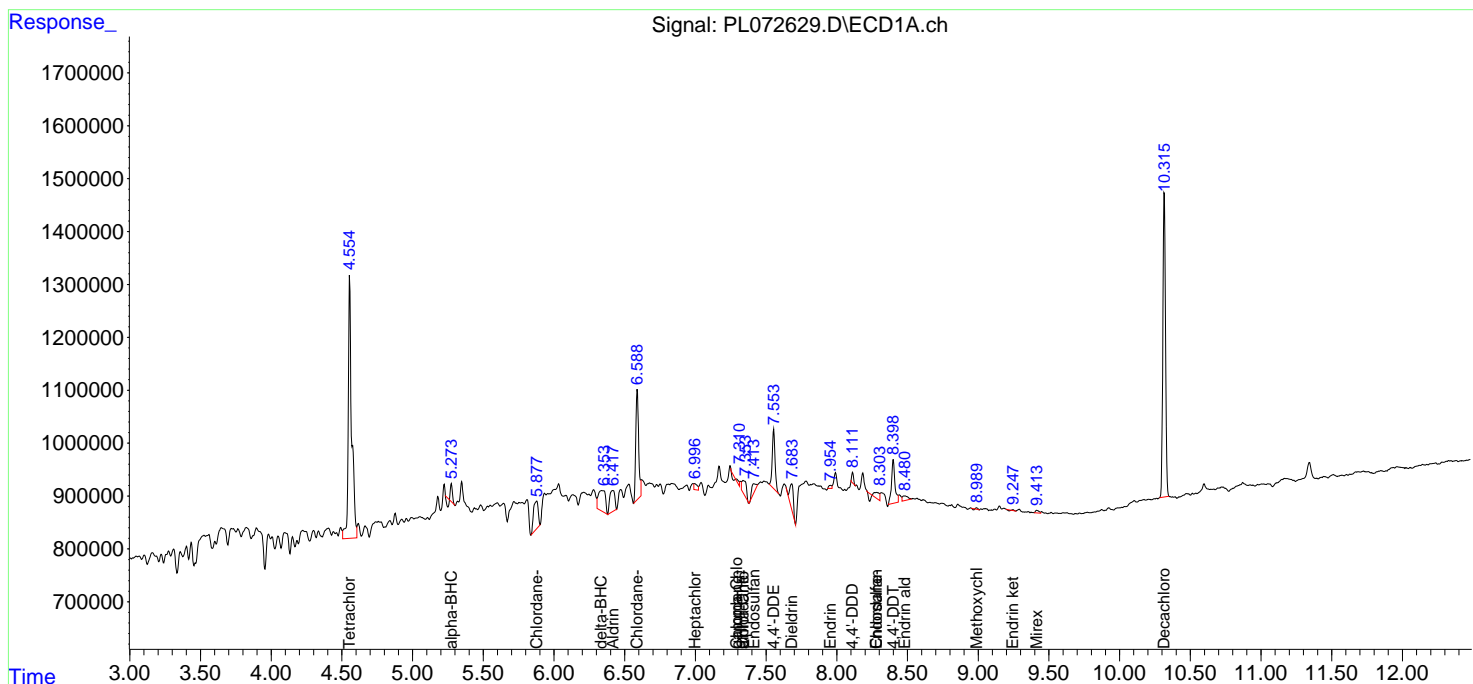
(f)=RT Delta > 1/2 Window (#)=Amounts differ by > 25% (m)=manual int.

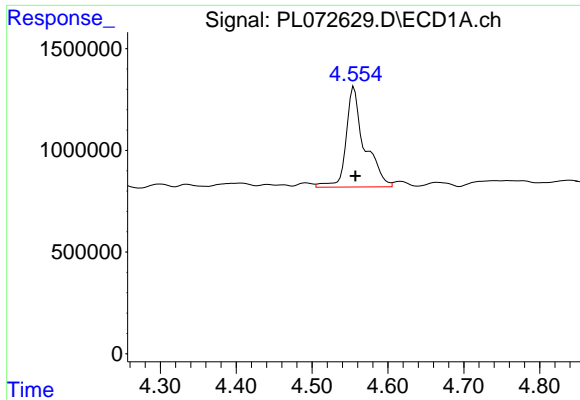
Data Path : Z:\pestpcbsrv\HPCHEM1\ECD\_L\Data\PL021122\  
 Data File : PL072629.D  
 Signal(s) : Signal #1: ECD1A.ch Signal #2: ECD2B.ch  
 Acq On : 11 Feb 2022 19:57  
 Operator : AR\AJ  
 Sample : N1505-01  
 Misc :  
 ALS Vial : 23 Sample Multiplier: 1

Instrument :  
 ECD\_L  
 ClientSampleId :  
 SU-02-021022

Integration File signal 1: autoint1.e  
 Integration File signal 2: autoint2.e  
 Quant Time: Feb 12 00:45:59 2022  
 Quant Method : Z:\pestpcbsrv\HPCHEM1\ECD\_L\methods\PL020722.M  
 Quant Title : GC Extractables  
 QLast Update : Tue Feb 08 05:14:10 2022  
 Response via : Initial Calibration  
 Integrator: ChemStation

Volume Inj. : 1 µl  
 Signal #1 Phase : ZB-MR2 Signal #2 Phase: ZB-MR1  
 Signal #1 Info : 30M x 0.32mm x0.2 Signal #2 Info : 30M x 0.32mm x0.5µm

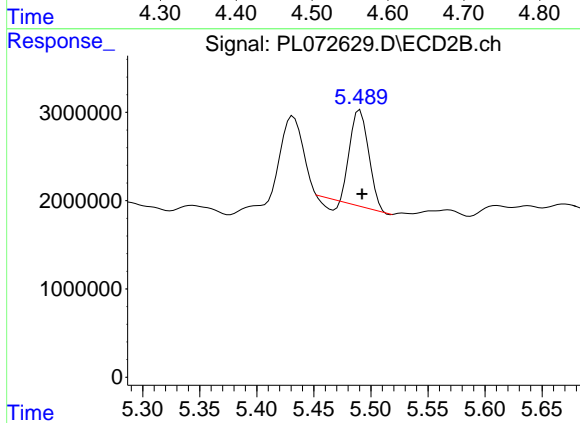




#1 Tetrachloro-m-xylene

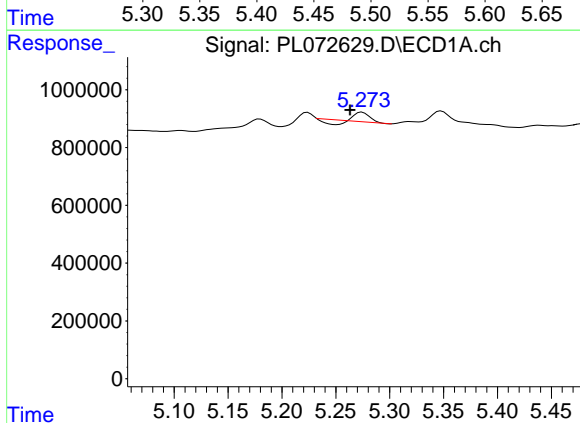
R.T.: 4.555 min  
 Delta R.T.: -0.002 min  
 Response: 8325179  
 Conc: 17.29 ng/ml

Instrument :  
 ECD\_L  
 ClientSampleId :  
 SU-02-021022



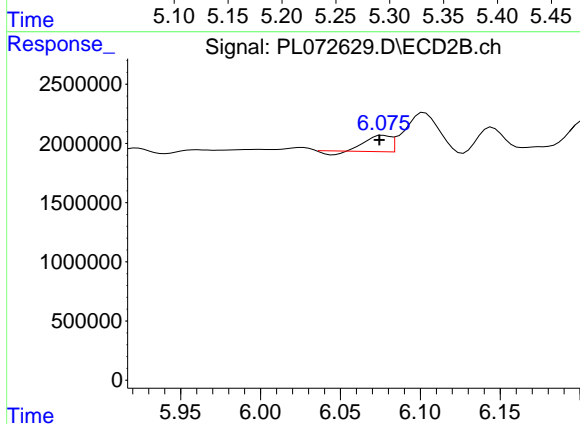
#1 Tetrachloro-m-xylene

R.T.: 5.490 min  
 Delta R.T.: -0.002 min  
 Response: 12043376  
 Conc: 6.97 ng/ml



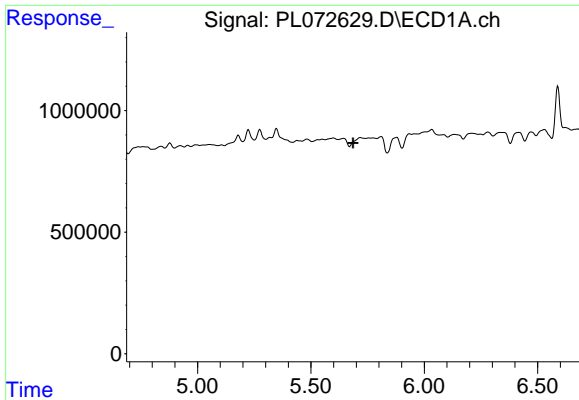
#2 alpha-BHC

R.T.: 5.274 min  
 Delta R.T.: 0.011 min  
 Response: 190402  
 Conc: 0.29 ng/ml



#2 alpha-BHC

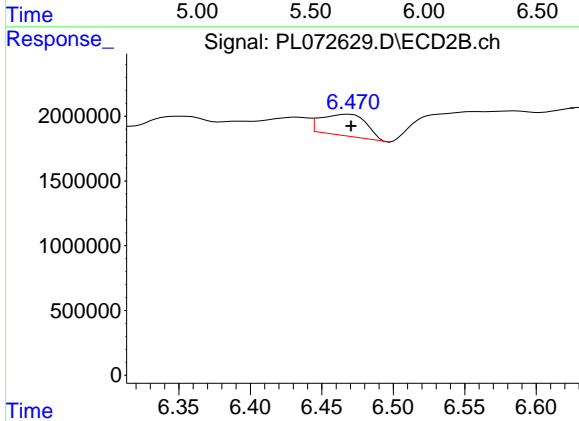
R.T.: 6.077 min  
 Delta R.T.: 0.003 min  
 Response: 1305592  
 Conc: 0.55 ng/ml



#3 gamma-BHC (Lindane)

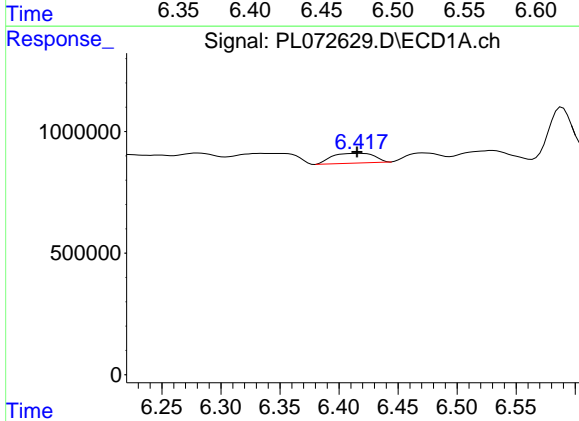
R.T.: 0.000 min  
 Exp R.T.: 5.686 min  
 Response: 0  
 Conc: N.D.

Instrument :  
 ECD\_L  
 ClientSampleId :  
 SU-02-021022



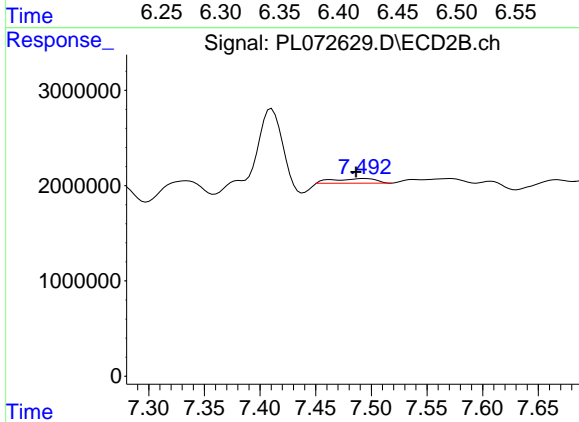
#3 gamma-BHC (Lindane)

R.T.: 6.469 min  
 Delta R.T.: -0.002 min  
 Response: 3665113  
 Conc: 1.59 ng/ml



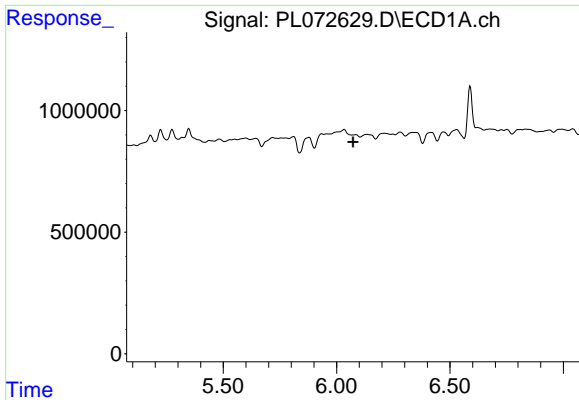
#5 Aldrin

R.T.: 6.418 min  
 Delta R.T.: 0.003 min  
 Response: 999730  
 Conc: 1.55 ng/ml



#5 Aldrin

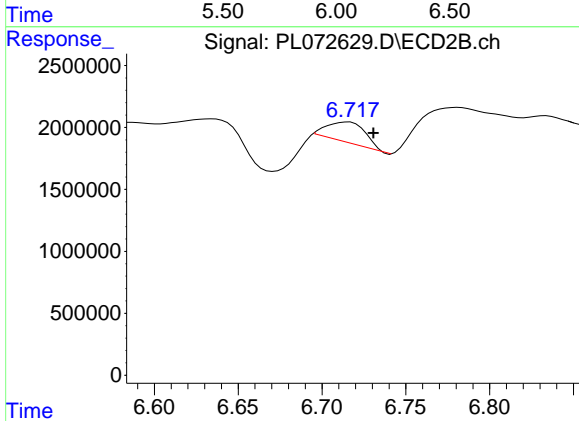
R.T.: 7.494 min  
 Delta R.T.: 0.008 min  
 Response: 1122825  
 Conc: 0.53 ng/ml



#6 beta-BHC

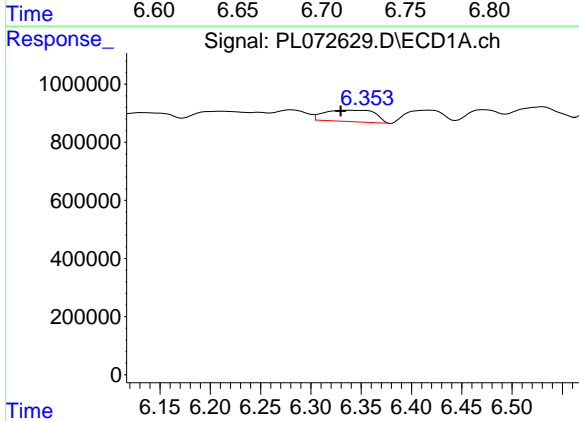
R.T.: 0.000 min  
 Exp R.T.: 6.073 min  
 Response: 0  
 Conc: N.D.

Instrument : ECD\_L  
 ClientSampleId : SU-02-021022



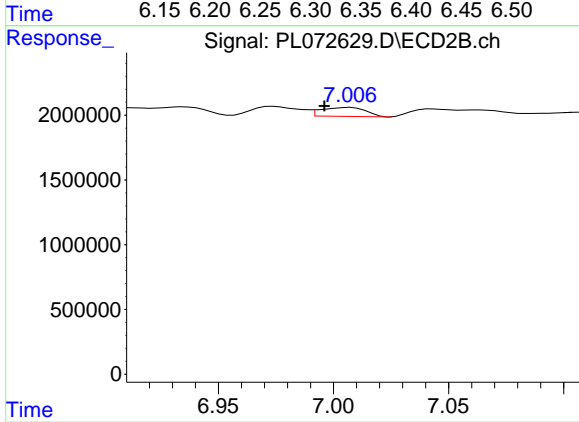
#6 beta-BHC

R.T.: 6.716 min  
 Delta R.T.: -0.015 min  
 Response: 2631259  
 Conc: 2.58 ng/ml



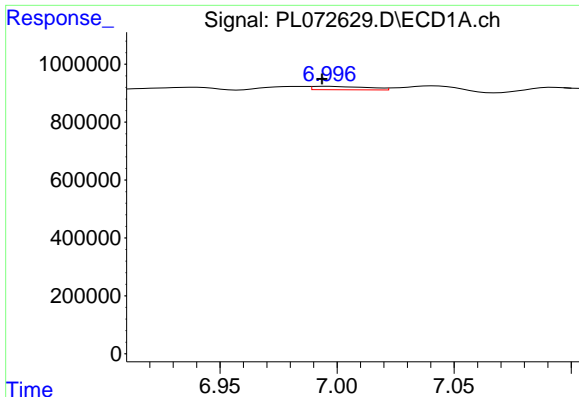
#7 delta-BHC

R.T.: 6.335 min  
 Delta R.T.: 0.005 min  
 Response: 1385923  
 Conc: 2.09 ng/ml



#7 delta-BHC

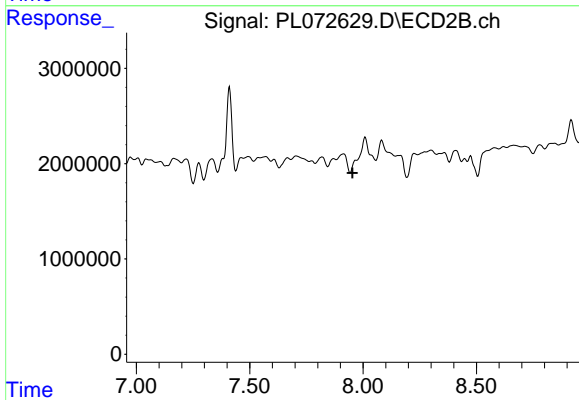
R.T.: 7.007 min  
 Delta R.T.: 0.011 min  
 Response: 934223  
 Conc: 0.41 ng/ml



#8 Heptachlor epoxide

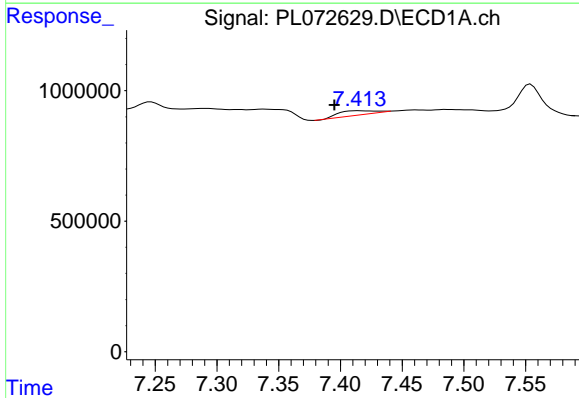
R.T.: 6.996 min  
 Delta R.T.: 0.003 min  
 Response: 191927  
 Conc: 0.30 ng/ml

Instrument :  
 ECD\_L  
 ClientSampleId :  
 SU-02-021022



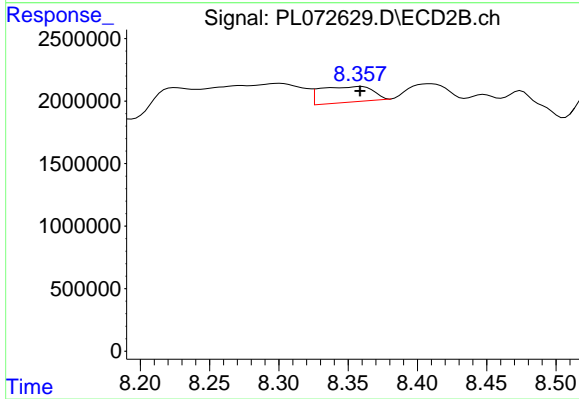
#8 Heptachlor epoxide

R.T.: 0.000 min  
 Exp R.T. : 7.954 min  
 Response: 0  
 Conc: N.D.



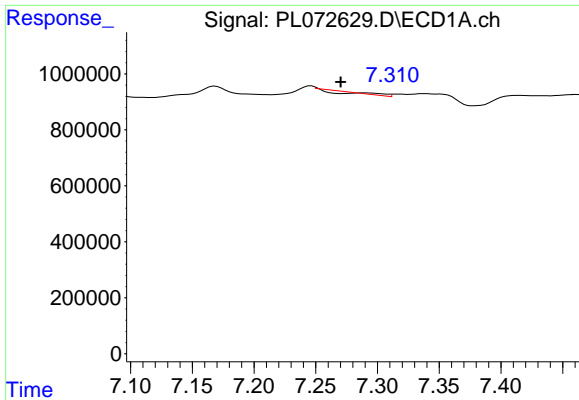
#9 Endosulfan I

R.T.: 7.415 min  
 Delta R.T.: 0.019 min  
 Response: 329109  
 Conc: 0.56 ng/ml



#9 Endosulfan I

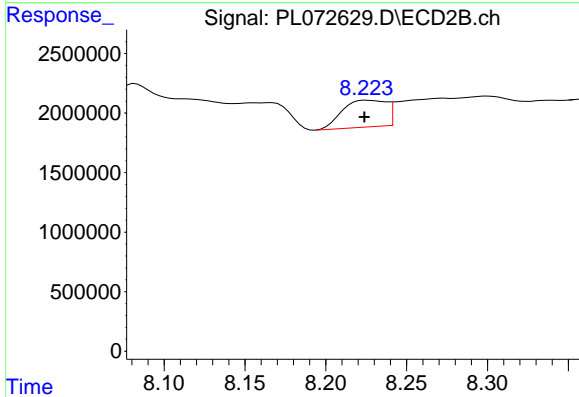
R.T.: 8.359 min  
 Delta R.T.: 0.000 min  
 Response: 3312427  
 Conc: 1.89 ng/ml



#10 gamma-Chlordane

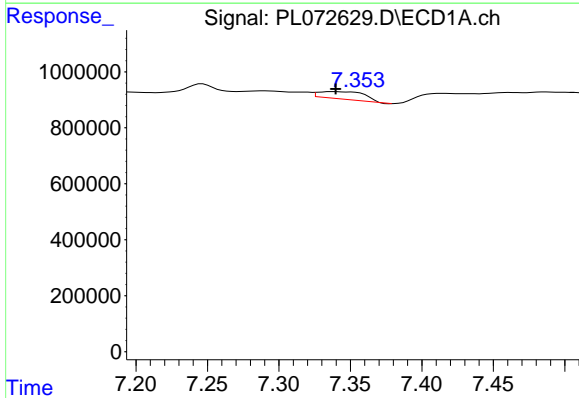
R.T.: 7.290 min  
 Delta R.T.: 0.020 min  
 Response: 23764  
 Conc: 0.04 ng/ml

Instrument :  
 ECD\_L  
 ClientSampleId :  
 SU-02-021022



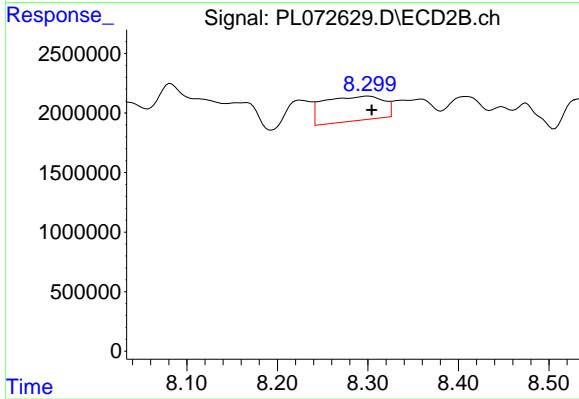
#10 gamma-Chlordane

R.T.: 8.226 min  
 Delta R.T.: 0.002 min  
 Response: 4232005  
 Conc: 2.19 ng/ml



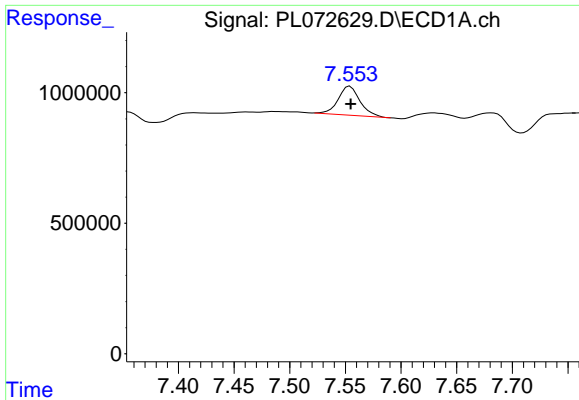
#11 alpha-Chlordane

R.T.: 7.338 min  
 Delta R.T.: -0.001 min  
 Response: 593182  
 Conc: 0.93 ng/ml



#11 alpha-Chlordane

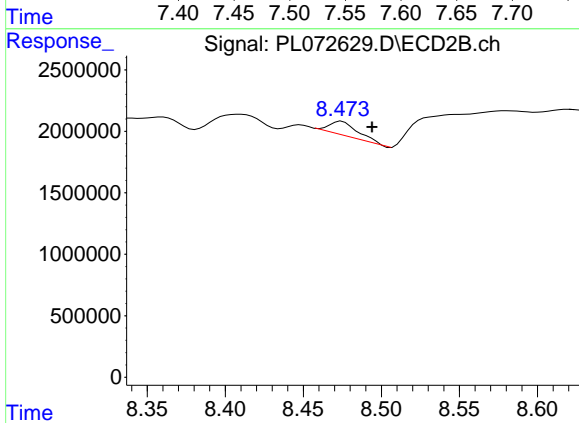
R.T.: 8.300 min  
 Delta R.T.: -0.004 min  
 Response: 9418223  
 Conc: 4.96 ng/ml



#12 4,4'-DDE

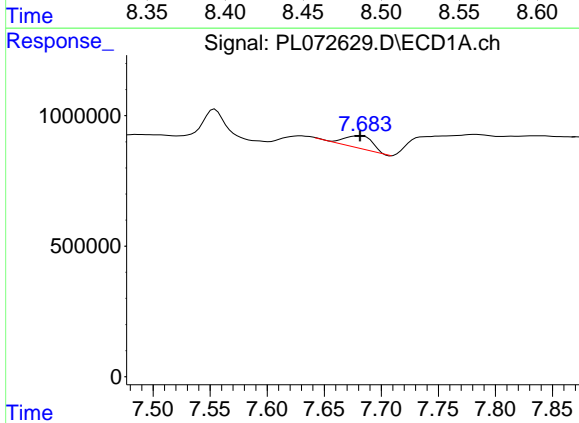
R.T.: 7.554 min  
 Delta R.T.: 0.000 min  
 Response: 1485816  
 Conc: 2.44 ng/ml

Instrument :  
 ECD\_L  
 ClientSampleId :  
 SU-02-021022



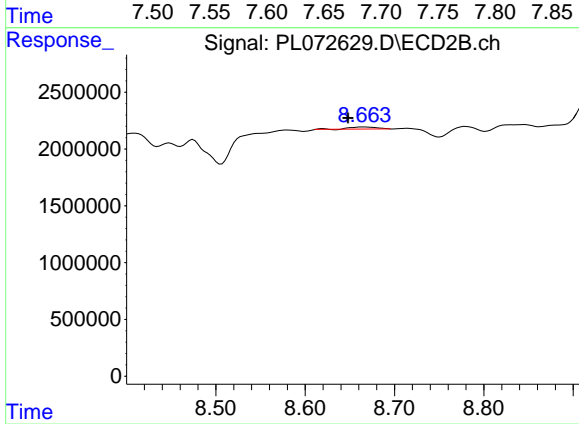
#12 4,4'-DDE

R.T.: 8.475 min  
 Delta R.T.: -0.020 min  
 Response: 1460812  
 Conc: 0.78 ng/ml



#13 Dieldrin

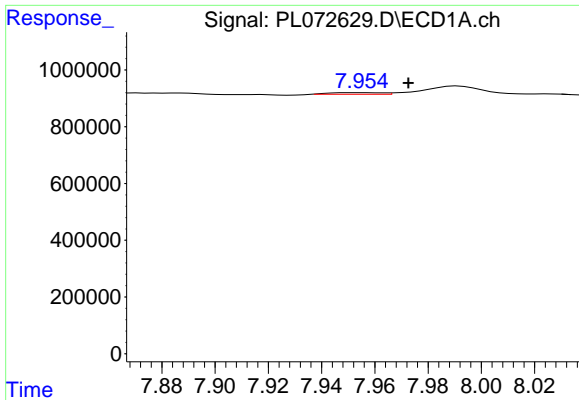
R.T.: 7.682 min  
 Delta R.T.: 0.000 min  
 Response: 859071  
 Conc: 1.36 ng/ml



#13 Dieldrin

R.T.: 8.666 min  
 Delta R.T.: 0.018 min  
 Response: 381822  
 Conc: 0.20 ng/ml

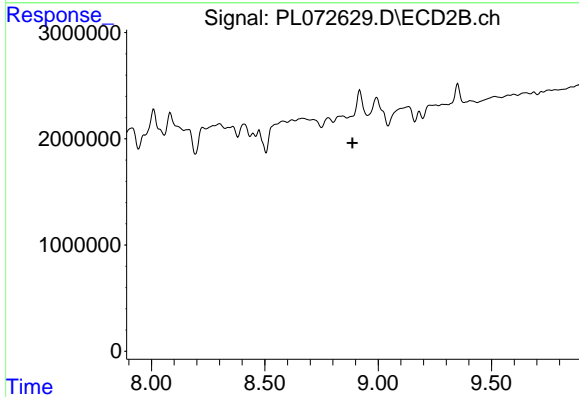




#14 Endrin

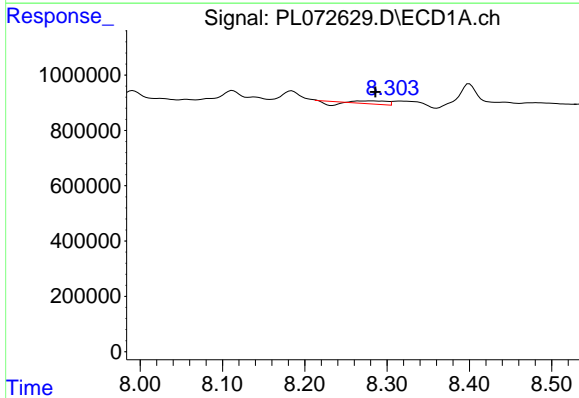
R.T.: 7.955 min  
 Delta R.T.: -0.017 min  
 Response: 80089  
 Conc: 0.14 ng/ml

Instrument :  
 ECD\_L  
 ClientSampleId :  
 SU-02-021022



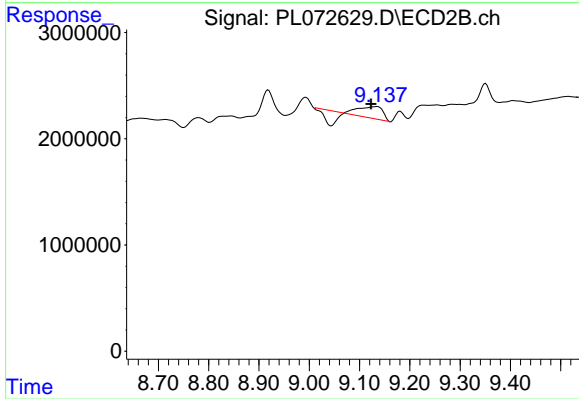
#14 Endrin

R.T.: 0.000 min  
 Exp R.T. : 8.887 min  
 Response: 0  
 Conc: N.D.



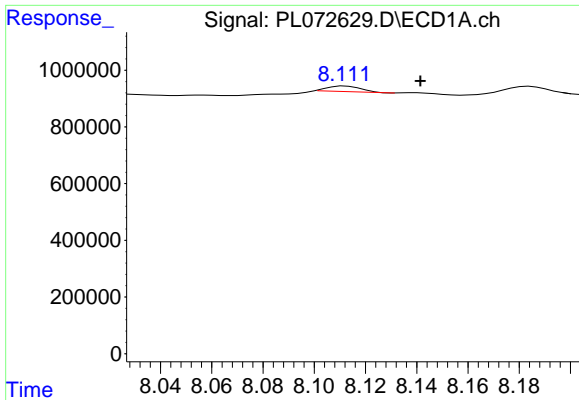
#15 Endosulfan II

R.T.: 8.282 min  
 Delta R.T.: -0.004 min  
 Response: 174161  
 Conc: 0.29 ng/ml



#15 Endosulfan II

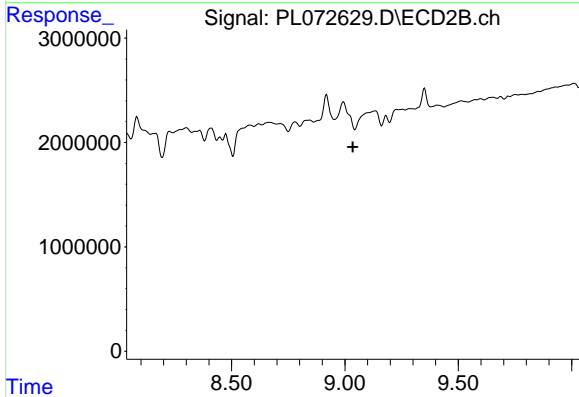
R.T.: 9.135 min  
 Delta R.T.: 0.011 min  
 Response: 1816851  
 Conc: 1.08 ng/ml



#16 4,4'-DDD

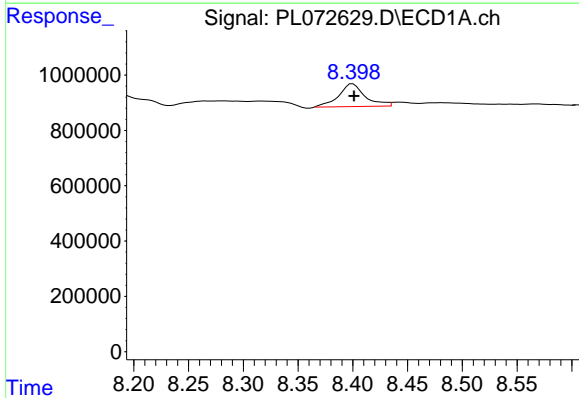
R.T.: 8.112 min  
 Delta R.T.: -0.029 min  
 Response: 177577  
 Conc: 0.37 ng/ml

Instrument : ECD\_L  
 ClientSampleId : SU-02-021022



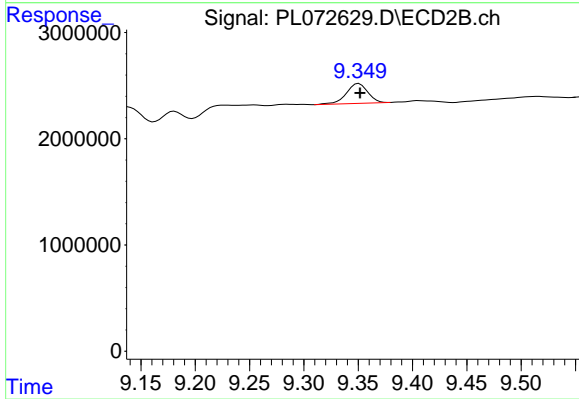
#16 4,4'-DDD

R.T.: 0.000 min  
 Exp R.T. : 9.035 min  
 Response: 0  
 Conc: N.D.



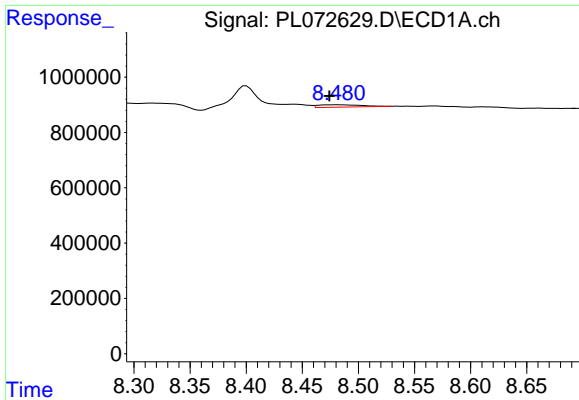
#17 4,4'-DDT

R.T.: 8.400 min  
 Delta R.T.: -0.001 min  
 Response: 1377947  
 Conc: 2.56 ng/ml



#17 4,4'-DDT

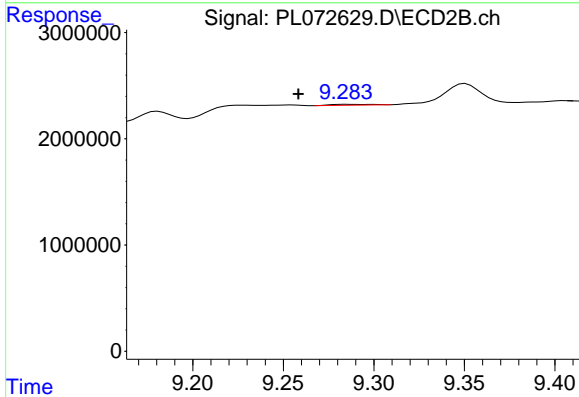
R.T.: 9.351 min  
 Delta R.T.: 0.000 min  
 Response: 2569122  
 Conc: 1.68 ng/ml



#18 Endrin aldehyde

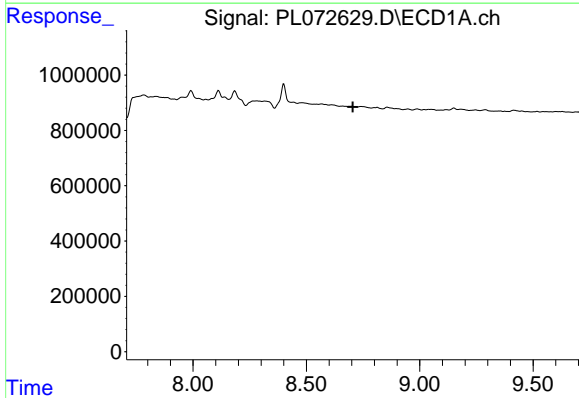
R.T.: 8.483 min  
 Delta R.T.: 0.008 min  
 Response: 228537  
 Conc: 0.52 ng/ml

Instrument :  
 ECD\_L  
 ClientSampleId :  
 SU-02-021022



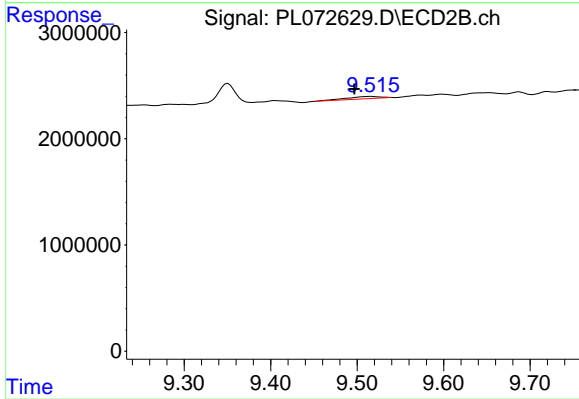
#18 Endrin aldehyde

R.T.: 9.285 min  
 Delta R.T.: 0.027 min  
 Response: 130652  
 Conc: 0.12 ng/ml



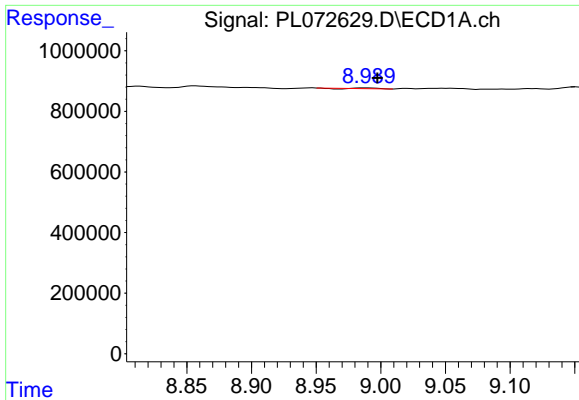
#19 Endosulfan Sulfate

R.T.: 0.000 min  
 Exp R.T. : 8.705 min  
 Response: 0  
 Conc: N.D.



#19 Endosulfan Sulfate

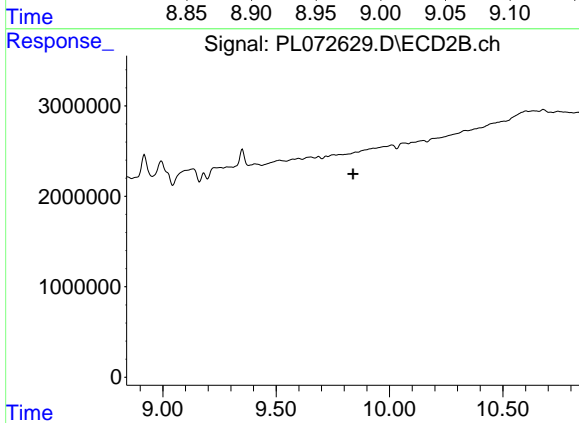
R.T.: 9.515 min  
 Delta R.T.: 0.018 min  
 Response: 653600  
 Conc: 0.44 ng/ml



#20 Methoxychlor

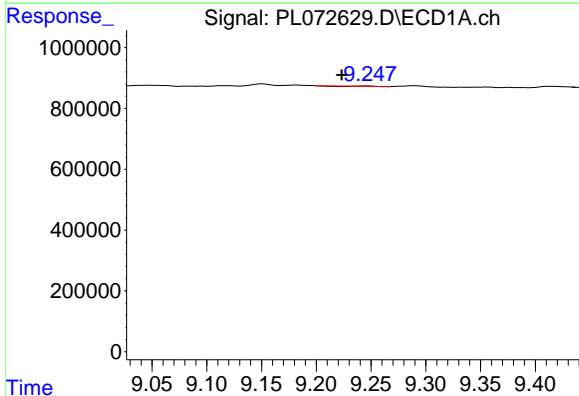
R.T.: 8.989 min  
 Delta R.T.: -0.008 min  
 Response: 18657  
 Conc: 0.05 ng/ml

Instrument :  
 ECD\_L  
 ClientSampleId :  
 SU-02-021022



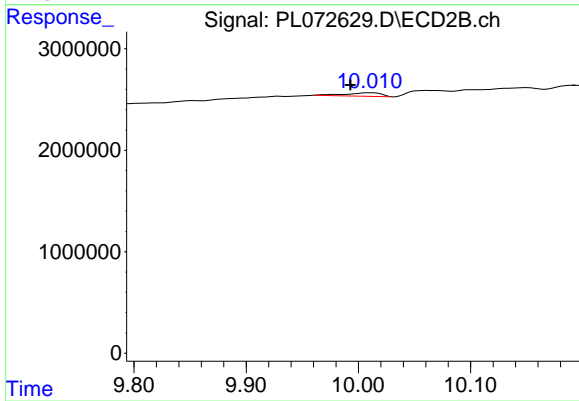
#20 Methoxychlor

R.T.: 0.000 min  
 Exp R.T. : 9.839 min  
 Response: 0  
 Conc: N.D.



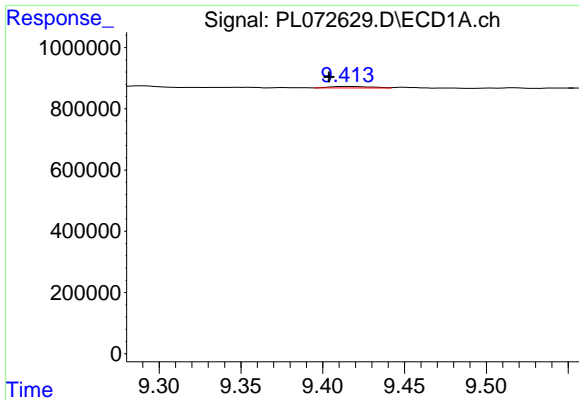
#21 Endrin ketone

R.T.: 9.246 min  
 Delta R.T.: 0.023 min  
 Response: 2866  
 Conc: 0.00 ng/ml



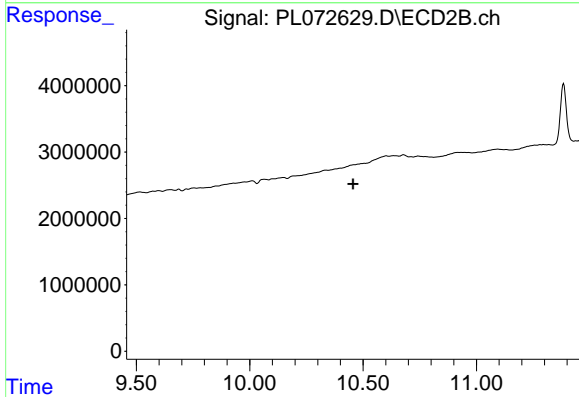
#21 Endrin ketone

R.T.: 10.011 min  
 Delta R.T.: 0.018 min  
 Response: 745800  
 Conc: 0.47 ng/ml

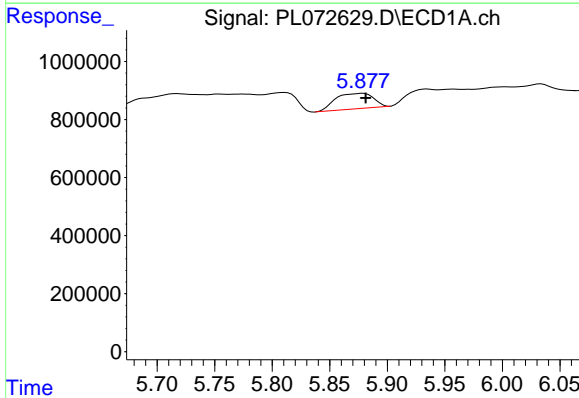


#22 Mirex  
 R.T.: 9.415 min  
 Delta R.T.: 0.011 min  
 Response: 85812  
 Conc: 0.14 ng/ml

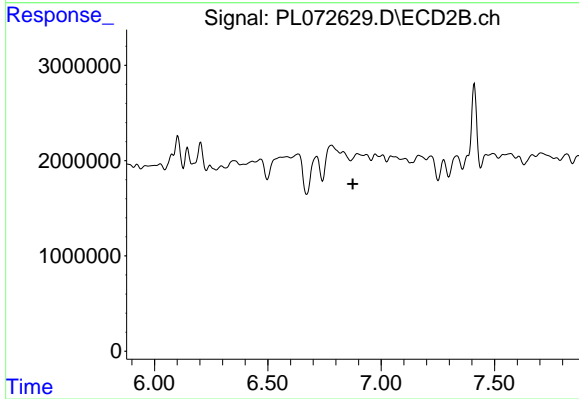
Instrument :  
 ECD\_L  
 ClientSampleId :  
 SU-02-021022



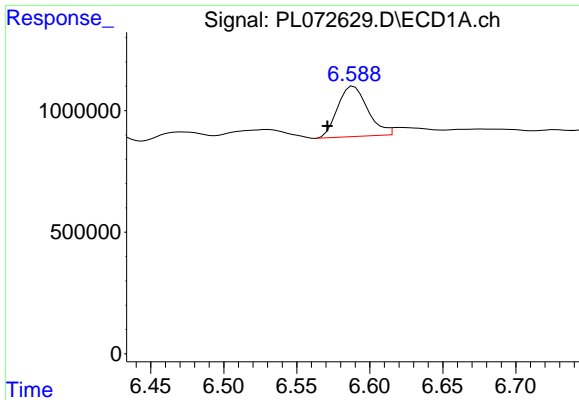
#22 Mirex  
 R.T.: 0.000 min  
 Exp R.T. : 10.456 min  
 Response: 0  
 Conc: N.D.



#23 Chlordane-1  
 R.T.: 5.879 min  
 Delta R.T.: -0.002 min  
 Response: 1218056  
 Conc: 65.63 ng/ml



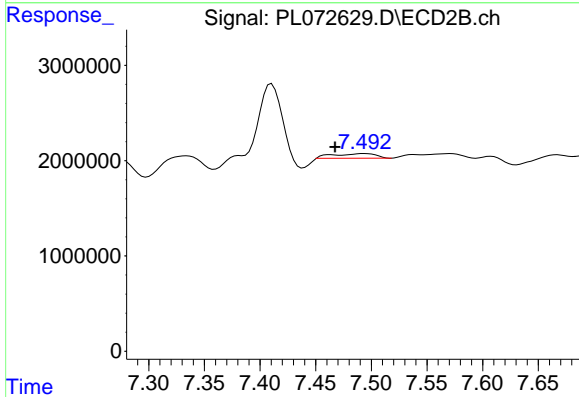
#23 Chlordane-1  
 R.T.: 6.895 min  
 Delta R.T.: 0.021 min  
 Response: -542306  
 Conc: N.D.



#24 Chlordane-2

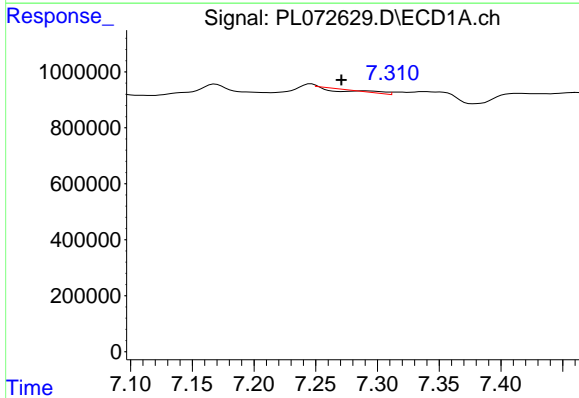
R.T.: 6.589 min  
 Delta R.T.: 0.018 min  
 Response: 2967862  
 Conc: 117.37 ng/ml

Instrument :  
 ECD\_L  
 ClientSampleId :  
 SU-02-021022



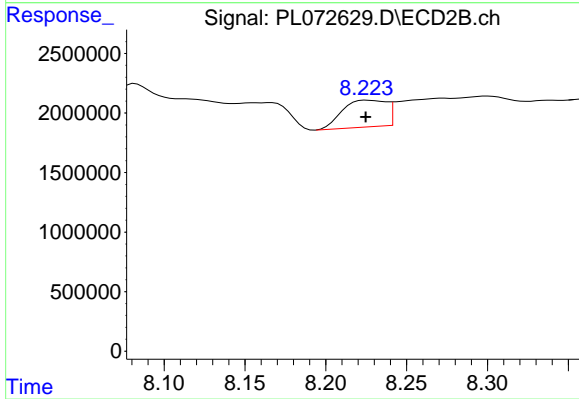
#24 Chlordane-2

R.T.: 7.494 min  
 Delta R.T.: 0.026 min  
 Response: 1122825  
 Conc: 14.58 ng/ml



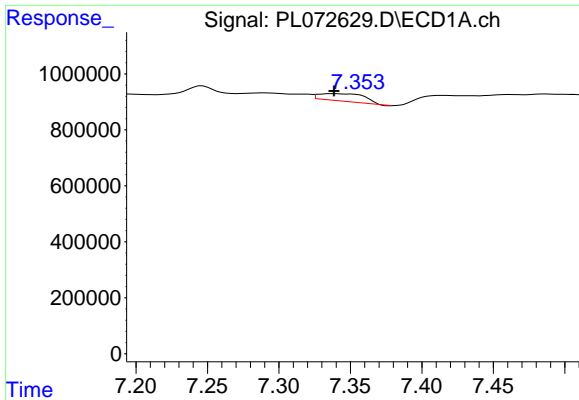
#25 Chlordane-3

R.T.: 7.290 min  
 Delta R.T.: 0.019 min  
 Response: 23764  
 Conc: 0.35 ng/ml



#25 Chlordane-3

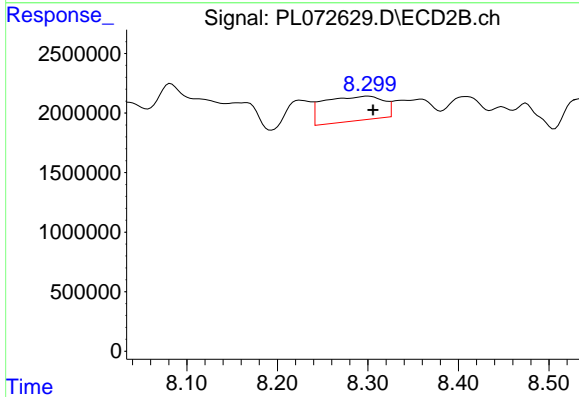
R.T.: 8.226 min  
 Delta R.T.: 0.001 min  
 Response: 4232005  
 Conc: 14.16 ng/ml



#26 Chlordane-4

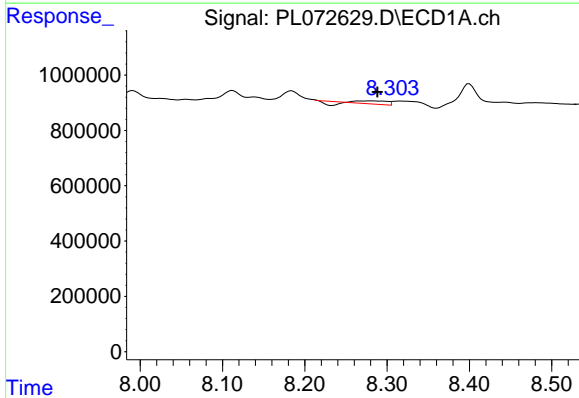
R.T.: 7.338 min  
 Delta R.T.: 0.000 min  
 Response: 593182  
 Conc: 8.08 ng/ml

Instrument :  
 ECD\_L  
 ClientSampleId :  
 SU-02-021022



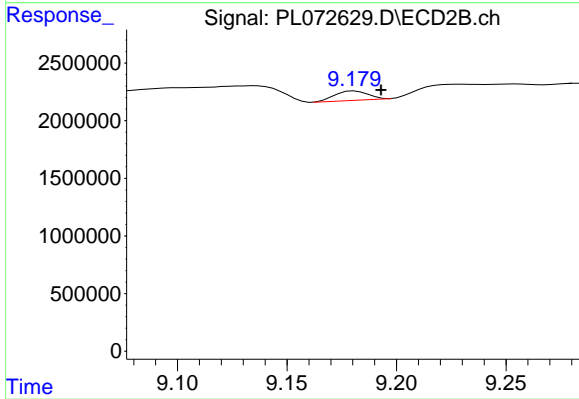
#26 Chlordane-4

R.T.: 8.300 min  
 Delta R.T.: -0.005 min  
 Response: 9418223  
 Conc: 26.40 ng/ml



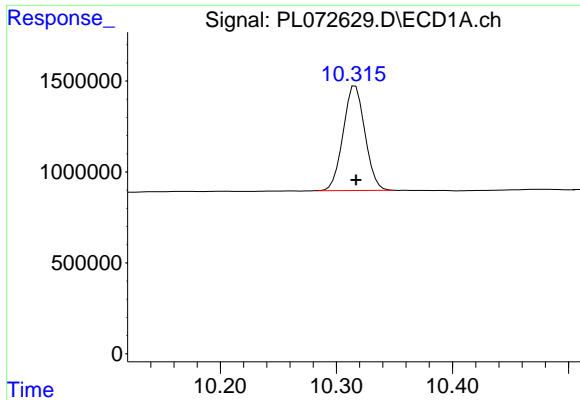
#27 Chlordane-5

R.T.: 8.282 min  
 Delta R.T.: -0.006 min  
 Response: 174161  
 Conc: 6.79 ng/ml



#27 Chlordane-5

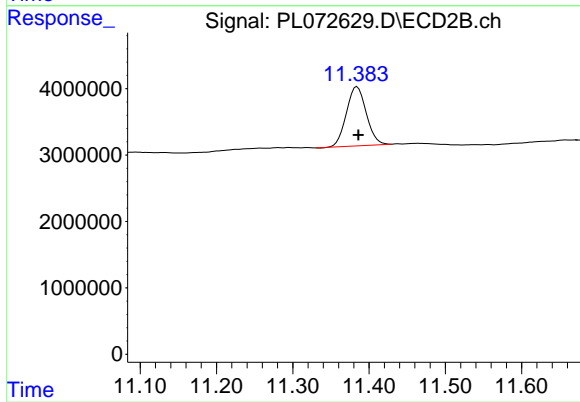
R.T.: 9.181 min  
 Delta R.T.: -0.012 min  
 Response: 863440  
 Conc: 14.13 ng/ml



#28 Decachlorobiphenyl

R.T.: 10.316 min  
Delta R.T.: 0.000 min  
Response: 7504959  
Conc: 9.91 ng/ml

Instrument :  
ECD\_L  
ClientSampleId :  
SU-02-021022



#28 Decachlorobiphenyl

R.T.: 11.384 min  
Delta R.T.: -0.002 min  
Response: 16095525  
Conc: 10.15 ng/ml