

Data Path : Z:\pestpcbsrv\HPCHEM1\ECD_L\Data\PL021122\
 Data File : PL072630.D
 Signal(s) : Signal #1: ECD1A.ch Signal #2: ECD2B.ch
 Acq On : 11 Feb 2022 20:14
 Operator : AR\AJ
 Sample : N1505-01
 Misc :
 ALS Vial : 24 Sample Multiplier: 1

Instrument :
 ECD_L
 ClientSampleId :

Integration File signal 1: autoint1.e
 Integration File signal 2: autoint2.e
 Quant Time: Feb 12 00:46:20 2022
 Quant Method : Z:\pestpcbsrv\HPCHEM1\ECD_L\methods\PL020722.M
 Quant Title : GC Extractables
 QLast Update : Tue Feb 08 05:14:10 2022
 Response via : Initial Calibration
 Integrator: ChemStation

Volume Inj. : 1 µl
 Signal #1 Phase : ZB-MR2 Signal #2 Phase: ZB-MR1
 Signal #1 Info : 30M x 0.32mm x0.2 Signal #2 Info : 30M x 0.32mm x0.5µm

	Compound	RT#1	RT#2	Resp#1	Resp#2	ng/ml	ng/ml

System Monitoring Compounds							
1)	SA Tetrachlo...	4.555	5.491	7176290	12474888	14.904	7.222 #
2)	SA Decachlor...	10.317	11.385	8648761	18031684	11.424	11.371
Target Compounds							
2)	A alpha-BHC	5.274	6.103f	95546	3599887	0.145	1.503 #
3)	MA gamma-BHC...	0.000	6.470	0	2225845	N.D.	0.967 #
4)	MA Heptachlor	6.085	0.000	61170	0	0.084	N.D. #
5)	MB Aldrin	6.421	0.000	661327	0	1.024	N.D. #
6)	B beta-BHC	6.085	6.715f	61170	1982003	0.247	1.944 #
7)	B delta-BHC	6.324	7.009	830313	439473	1.254	0.192 #
8)	Heptachlo...	6.987	0.000	344478	0	0.546	N.D. #
9)	A Endosulfan I	7.414f	8.358	226148	1469089	0.387	0.840 #
10)	B gamma-Chl...	7.296f	8.223	411086	4131852	0.649	2.136 #
11)	B alpha-Chl...	7.338	8.304	1163661	7965955	1.827	4.193 #
12)	B 4,4'-DDE	7.554	8.477f	1438958	1853024	2.368	0.991 #
13)	MA Dieldrin	7.682	8.628f	689880	196029	1.092	0.105 #
14)	MA Endrin	7.993f	0.000	130315	0	0.222	N.D. #
15)	B Endosulfa...	8.287	9.138	185893	938412	0.306	0.558 #
17)	MA 4,4'-DDT	8.400	9.351	1107420	1916543	2.058	1.252 #
18)	B Endrin al...	8.495f	9.286f	111540	302668	0.256	0.269
19)	B Endosulfa...	8.723f	9.498	120286	83603	0.202	0.056 #
21)	B Endrin ke...	0.000	10.019f	0	114786	N.D.	0.072 #
22)	Mirex	9.413	0.000	51849	0	0.087	N.D. #
23)	Chlordane-1	5.879	6.896f	1293608	-442970	69.699	N.D. #
24)	Chlordane-2	6.578	0.000	3200234	0	126.560	N.D. #
25)	Chlordane-3	7.296f	8.223	411086	4131852	6.099	13.826 #
26)	Chlordane-4	7.338	8.304	1163661	7965955	15.859	22.326 #
27)	Chlordane-5	8.287	9.184	185893	422391	7.246	6.910

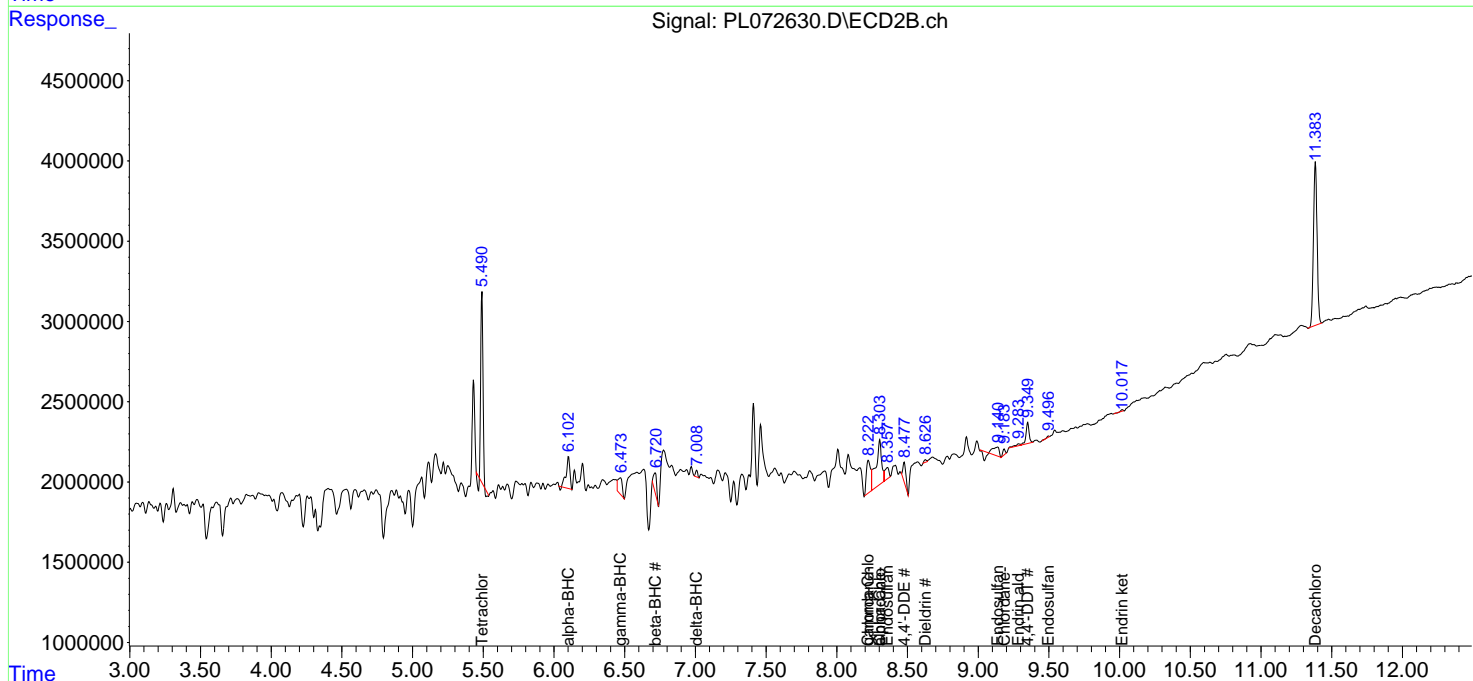
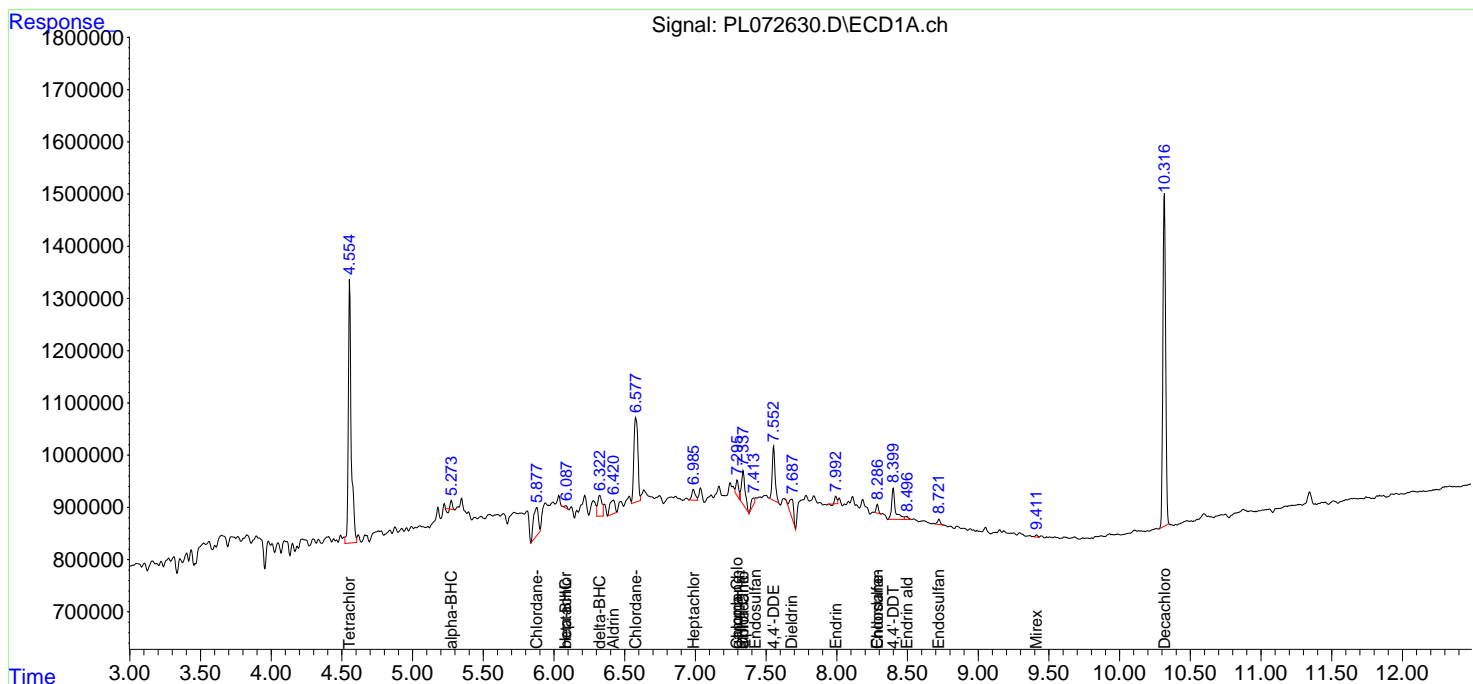
(f)=RT Delta > 1/2 Window (#)=Amounts differ by > 25% (m)=manual int.

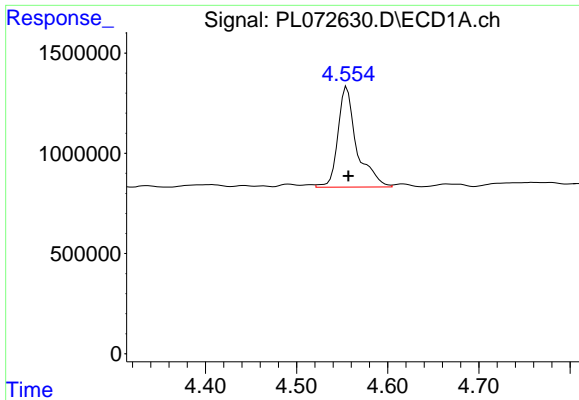
Data Path : Z:\pestpcbsrv\HPCHEM1\ECD_L\Data\PL021122\
 Data File : PL072630.D
 Signal(s) : Signal #1: ECD1A.ch Signal #2: ECD2B.ch
 Acq On : 11 Feb 2022 20:14
 Operator : AR\AJ
 Sample : N1505-01
 Misc :
 ALS Vial : 24 Sample Multiplier: 1

Instrument :
 ECD_L
 ClientSampleId :

Integration File signal 1: autoint1.e
 Integration File signal 2: autoint2.e
 Quant Time: Feb 12 00:46:20 2022
 Quant Method : Z:\pestpcbsrv\HPCHEM1\ECD_L\methods\PL020722.M
 Quant Title : GC Extractables
 QLast Update : Tue Feb 08 05:14:10 2022
 Response via : Initial Calibration
 Integrator: ChemStation

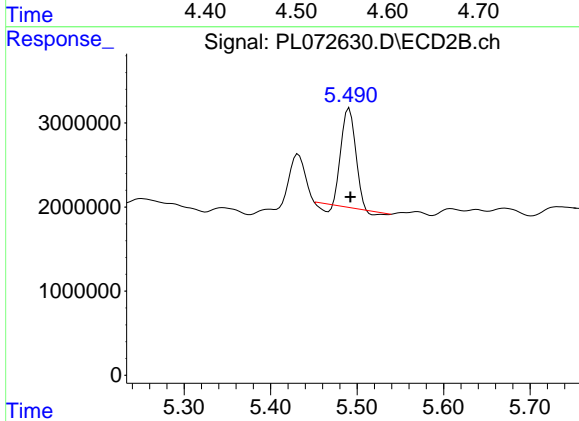
Volume Inj. : 1 µl
 Signal #1 Phase : ZB-MR2 Signal #2 Phase: ZB-MR1
 Signal #1 Info : 30M x 0.32mm x0.2 Signal #2 Info : 30M x 0.32mm x0.5µm



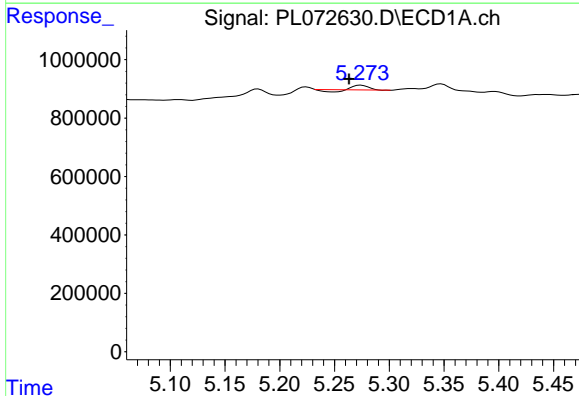


#1 Tetrachloro-m-xylene
 R.T.: 4.555 min
 Delta R.T.: -0.002 min
 Response: 7176290
 Conc: 14.90 ng/ml

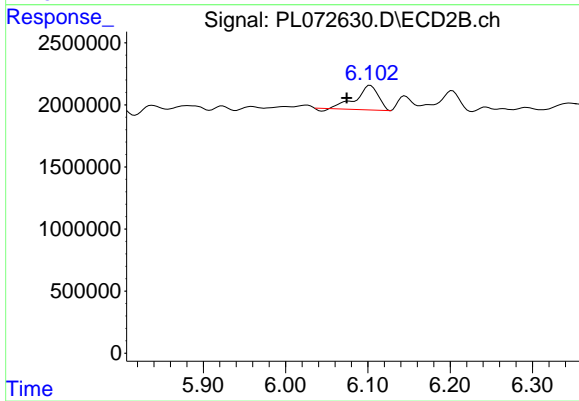
Instrument :
 ECD_L
 ClientSampleId :



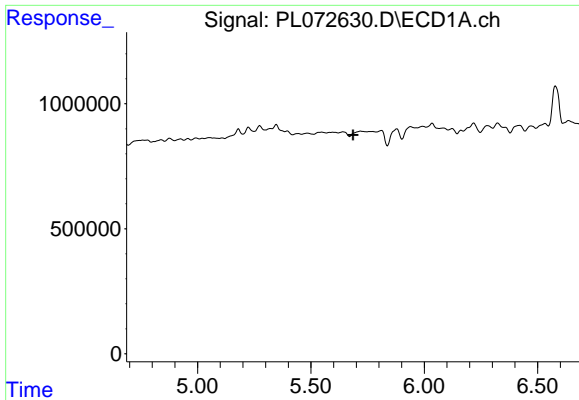
#1 Tetrachloro-m-xylene
 R.T.: 5.491 min
 Delta R.T.: -0.001 min
 Response: 12474888
 Conc: 7.22 ng/ml



#2 alpha-BHC
 R.T.: 5.274 min
 Delta R.T.: 0.011 min
 Response: 95546
 Conc: 0.14 ng/ml



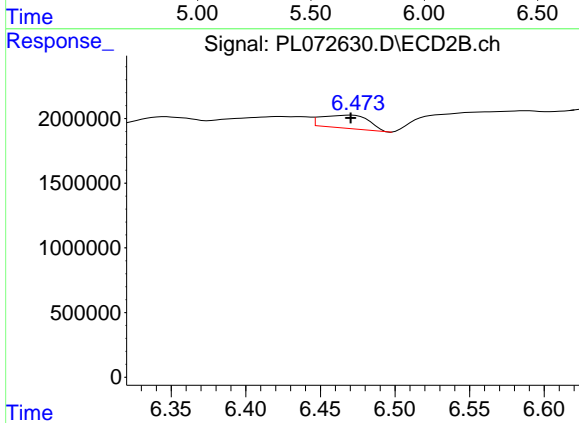
#2 alpha-BHC
 R.T.: 6.103 min
 Delta R.T.: 0.029 min
 Response: 3599887
 Conc: 1.50 ng/ml



#3 gamma-BHC (Lindane)

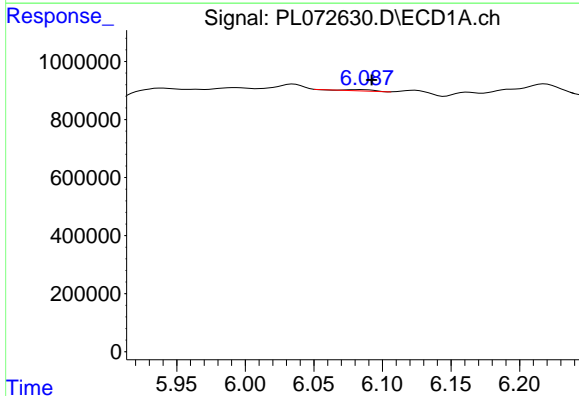
R.T.: 0.000 min
 Exp R.T.: 5.686 min
 Response: 0
 Conc: N.D.

Instrument :
 ECD_L
 ClientSampleId :



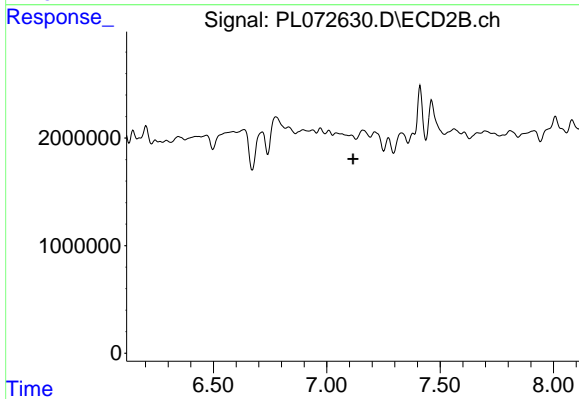
#3 gamma-BHC (Lindane)

R.T.: 6.470 min
 Delta R.T.: 0.000 min
 Response: 2225845
 Conc: 0.97 ng/ml



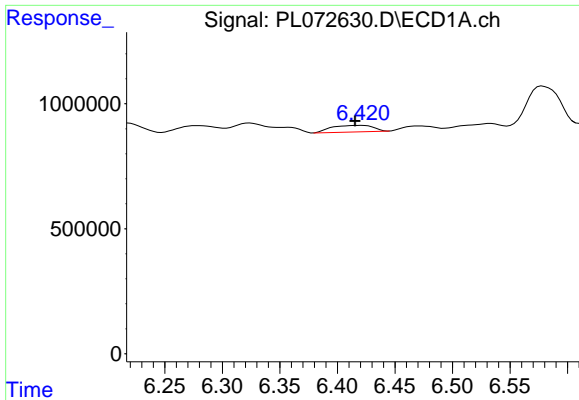
#4 Heptachlor

R.T.: 6.085 min
 Delta R.T.: -0.007 min
 Response: 61170
 Conc: 0.08 ng/ml



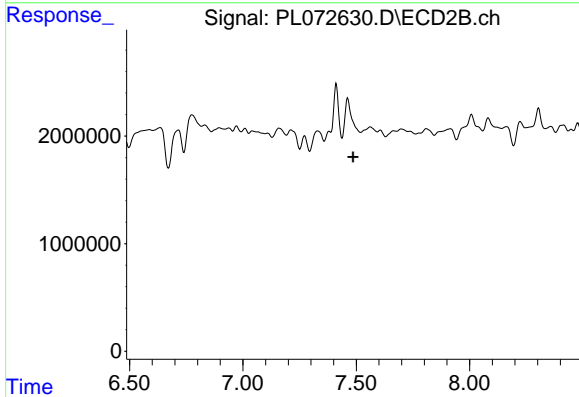
#4 Heptachlor

R.T.: 0.000 min
 Exp R.T.: 7.116 min
 Response: 0
 Conc: N.D.

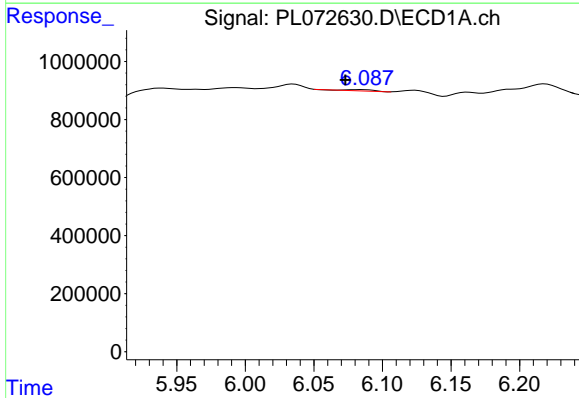


#5 Aldrin
 R.T.: 6.421 min
 Delta R.T.: 0.006 min
 Response: 661327
 Conc: 1.02 ng/ml

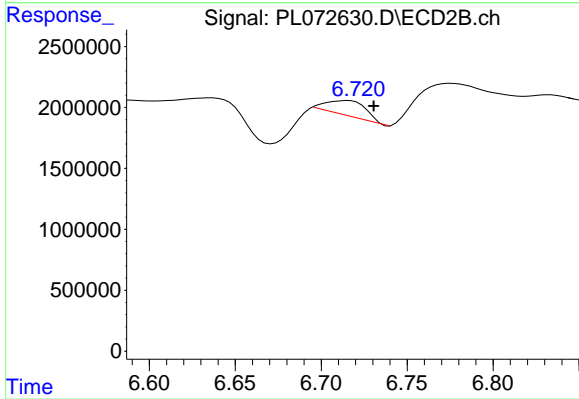
Instrument :
 ECD_L
 ClientSampleId :



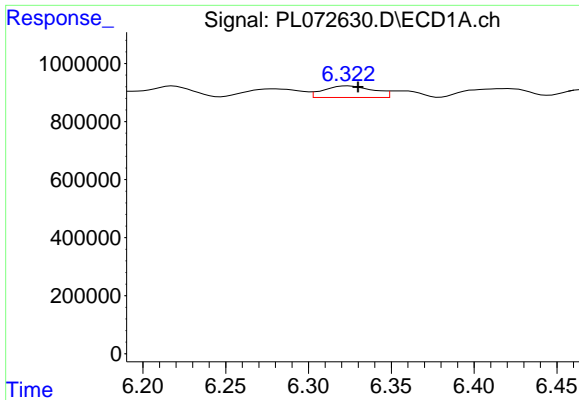
#5 Aldrin
 R.T.: 0.000 min
 Exp R.T. : 7.486 min
 Response: 0
 Conc: N.D.



#6 beta-BHC
 R.T.: 6.085 min
 Delta R.T.: 0.012 min
 Response: 61170
 Conc: 0.25 ng/ml



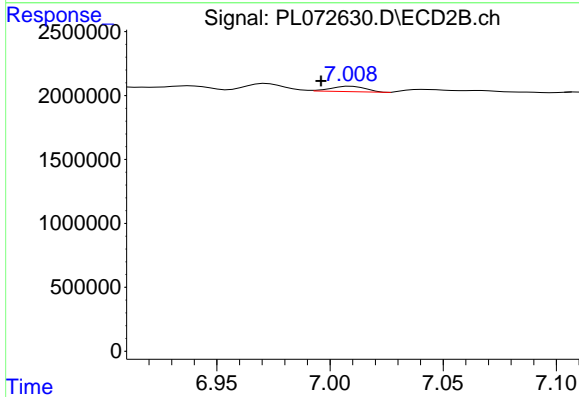
#6 beta-BHC
 R.T.: 6.715 min
 Delta R.T.: -0.015 min
 Response: 1982003
 Conc: 1.94 ng/ml



#7 delta-BHC

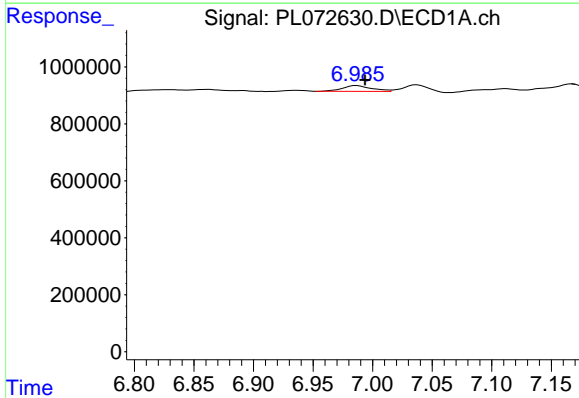
R.T.: 6.324 min
 Delta R.T.: -0.006 min
 Response: 830313
 Conc: 1.25 ng/ml

Instrument :
 ECD_L
 ClientSampleId :



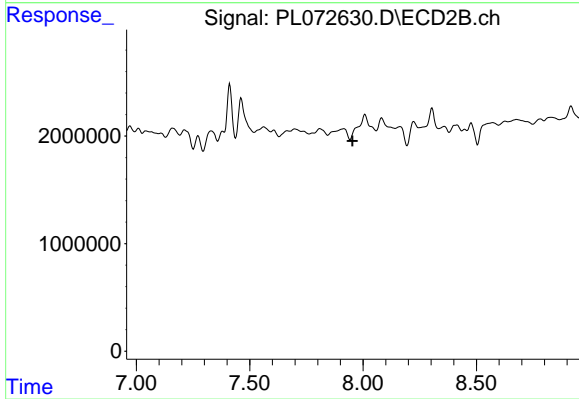
#7 delta-BHC

R.T.: 7.009 min
 Delta R.T.: 0.013 min
 Response: 439473
 Conc: 0.19 ng/ml



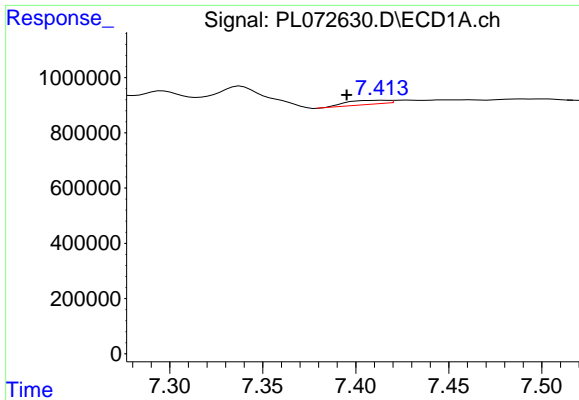
#8 Heptachlor epoxide

R.T.: 6.987 min
 Delta R.T.: -0.007 min
 Response: 344478
 Conc: 0.55 ng/ml



#8 Heptachlor epoxide

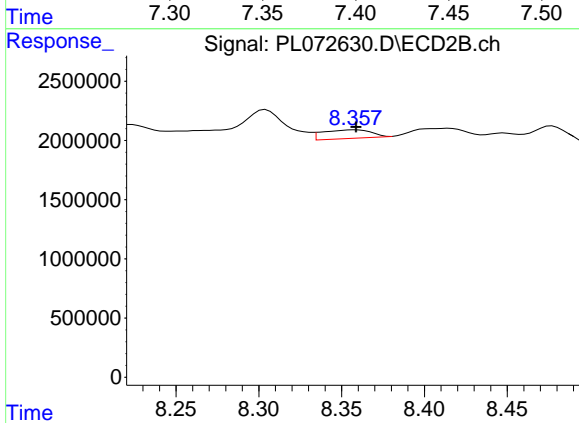
R.T.: 0.000 min
 Exp R.T.: 7.954 min
 Response: 0
 Conc: N.D.



#9 Endosulfan I

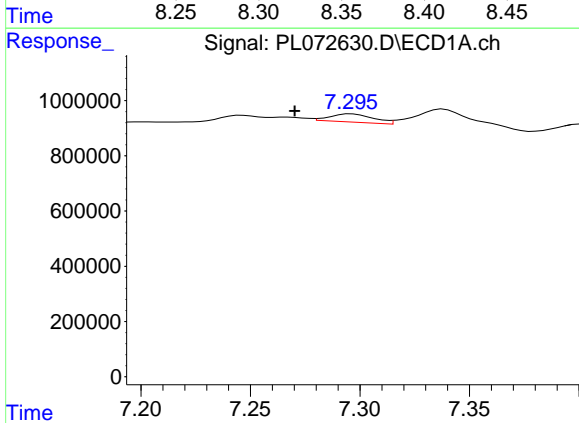
R.T.: 7.414 min
 Delta R.T.: 0.019 min
 Response: 226148
 Conc: 0.39 ng/ml

Instrument :
 ECD_L
 ClientSampleId :



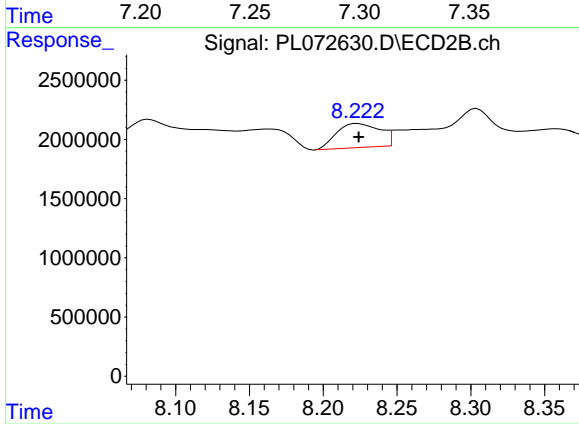
#9 Endosulfan I

R.T.: 8.358 min
 Delta R.T.: 0.000 min
 Response: 1469089
 Conc: 0.84 ng/ml



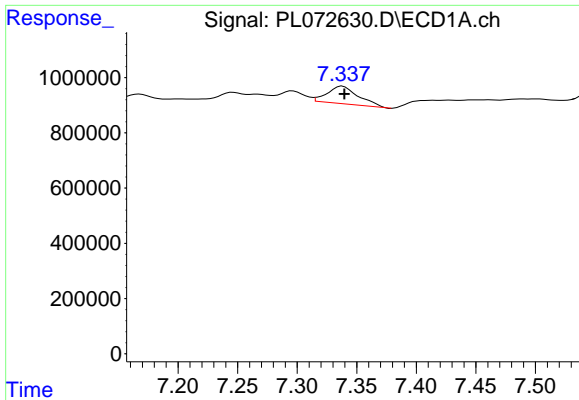
#10 gamma-Chlordane

R.T.: 7.296 min
 Delta R.T.: 0.026 min
 Response: 411086
 Conc: 0.65 ng/ml



#10 gamma-Chlordane

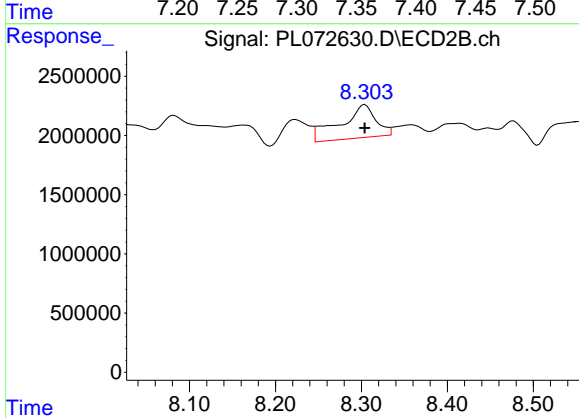
R.T.: 8.223 min
 Delta R.T.: 0.000 min
 Response: 4131852
 Conc: 2.14 ng/ml



#11 alpha-Chlordane

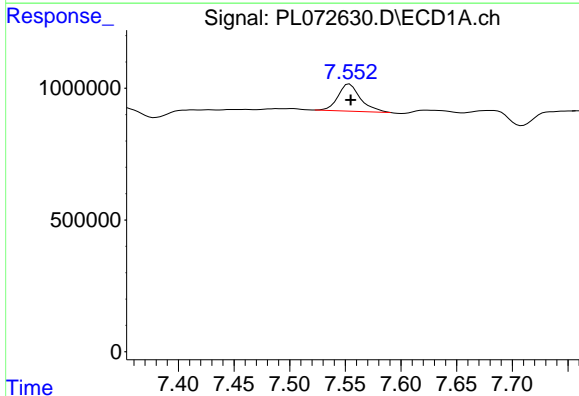
R.T.: 7.338 min
 Delta R.T.: -0.002 min
 Response: 1163661
 Conc: 1.83 ng/ml

Instrument :
 ECD_L
 ClientSampleId :



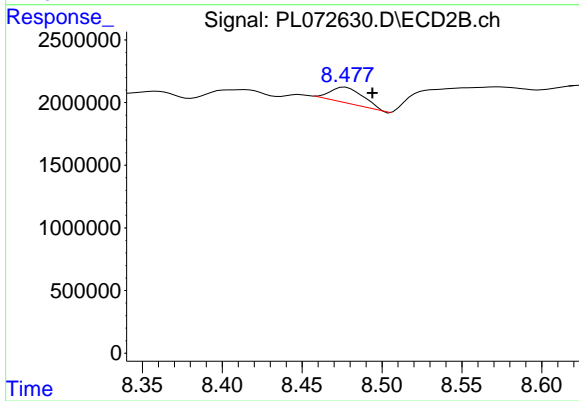
#11 alpha-Chlordane

R.T.: 8.304 min
 Delta R.T.: 0.000 min
 Response: 7965955
 Conc: 4.19 ng/ml



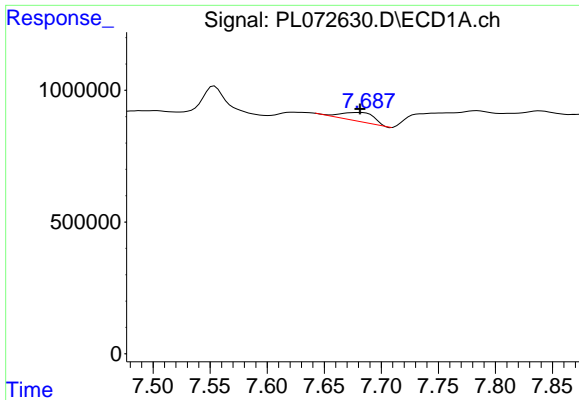
#12 4,4'-DDE

R.T.: 7.554 min
 Delta R.T.: -0.001 min
 Response: 1438958
 Conc: 2.37 ng/ml



#12 4,4'-DDE

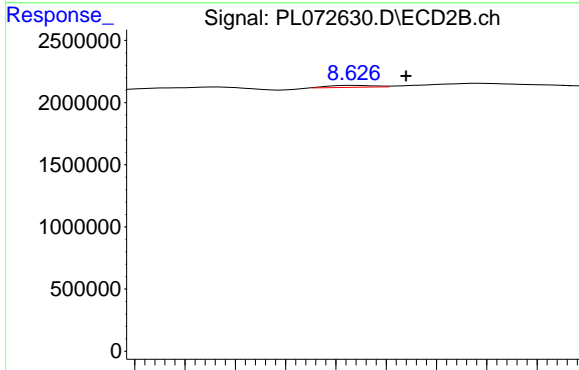
R.T.: 8.477 min
 Delta R.T.: -0.017 min
 Response: 1853024
 Conc: 0.99 ng/ml



#13 Dieldrin

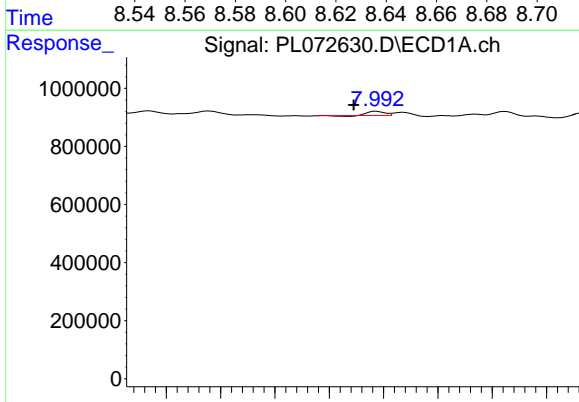
R.T.: 7.682 min
 Delta R.T.: 0.000 min
 Response: 689880
 Conc: 1.09 ng/ml

Instrument :
 ECD_L
 ClientSampleId :



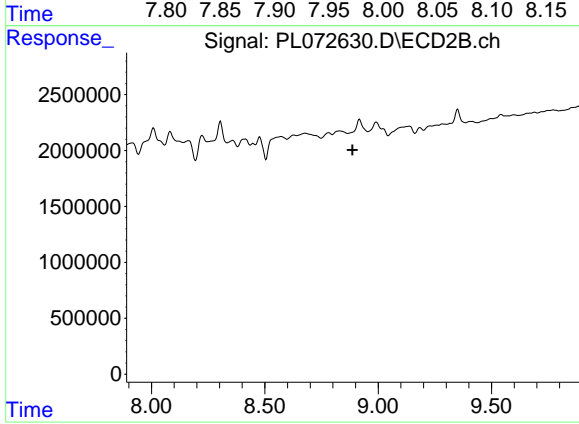
#13 Dieldrin

R.T.: 8.628 min
 Delta R.T.: -0.020 min
 Response: 196029
 Conc: 0.11 ng/ml



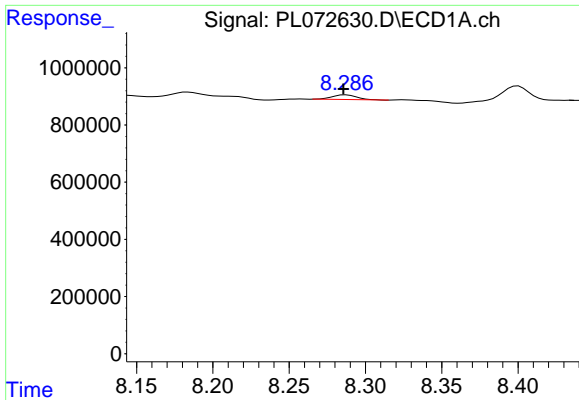
#14 Endrin

R.T.: 7.993 min
 Delta R.T.: 0.021 min
 Response: 130315
 Conc: 0.22 ng/ml



#14 Endrin

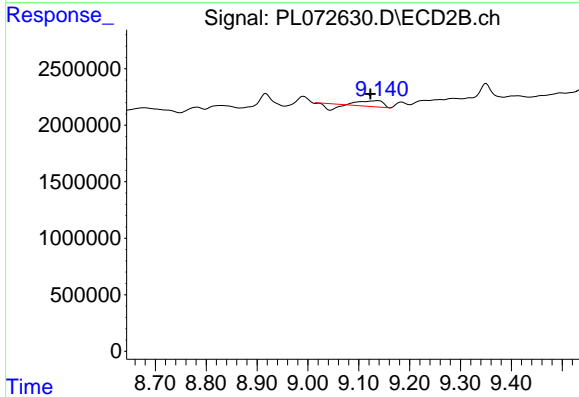
R.T.: 0.000 min
 Exp R.T. : 8.887 min
 Response: 0
 Conc: N.D.



#15 Endosulfan II

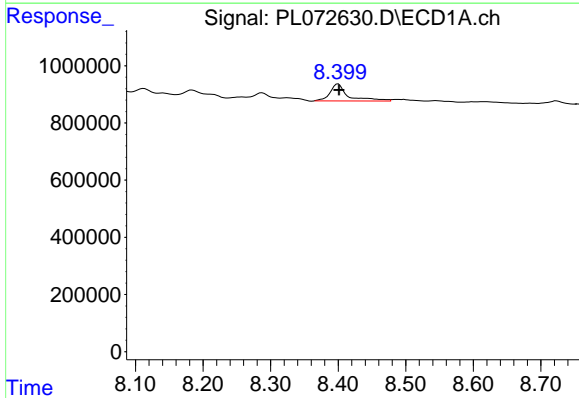
R.T.: 8.287 min
 Delta R.T.: 0.002 min
 Response: 185893
 Conc: 0.31 ng/ml

Instrument :
 ECD_L
 ClientSampleId :



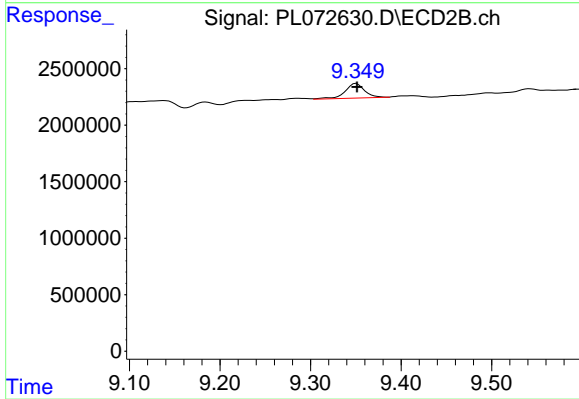
#15 Endosulfan II

R.T.: 9.138 min
 Delta R.T.: 0.015 min
 Response: 938412
 Conc: 0.56 ng/ml



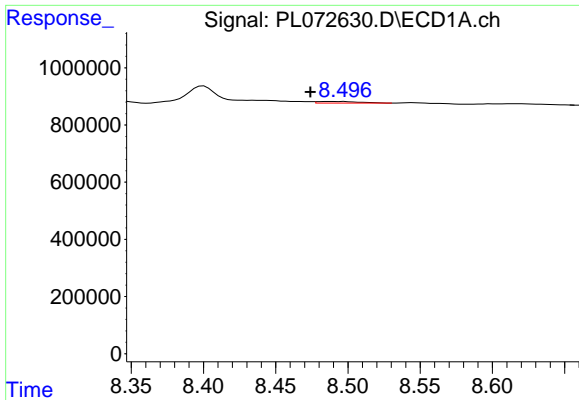
#17 4,4'-DDT

R.T.: 8.400 min
 Delta R.T.: -0.001 min
 Response: 1107420
 Conc: 2.06 ng/ml



#17 4,4'-DDT

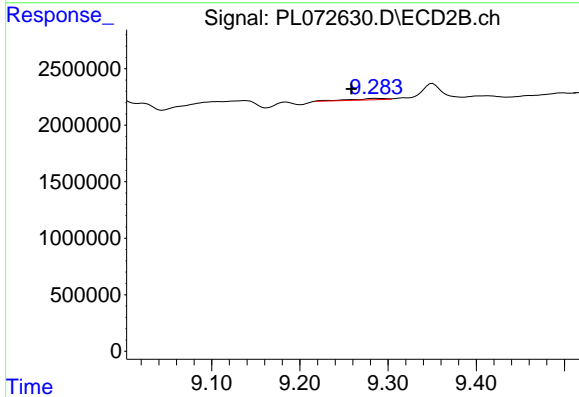
R.T.: 9.351 min
 Delta R.T.: 0.000 min
 Response: 1916543
 Conc: 1.25 ng/ml



#18 Endrin aldehyde

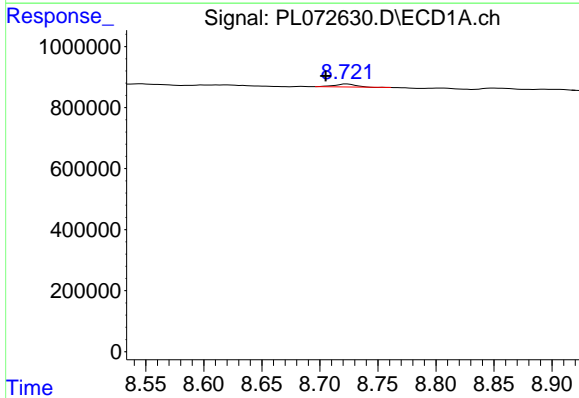
R.T.: 8.495 min
 Delta R.T.: 0.021 min
 Response: 111540
 Conc: 0.26 ng/ml

Instrument :
 ECD_L
 ClientSampleId :



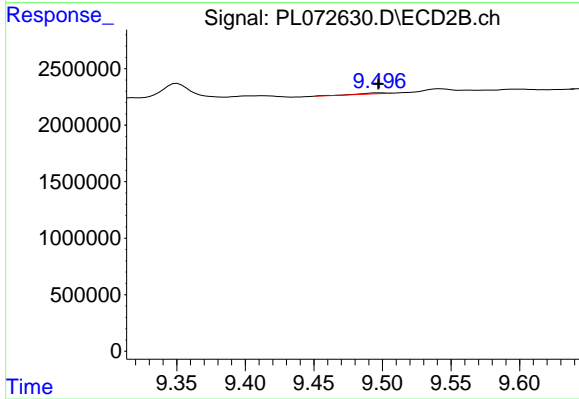
#18 Endrin aldehyde

R.T.: 9.286 min
 Delta R.T.: 0.027 min
 Response: 302668
 Conc: 0.27 ng/ml



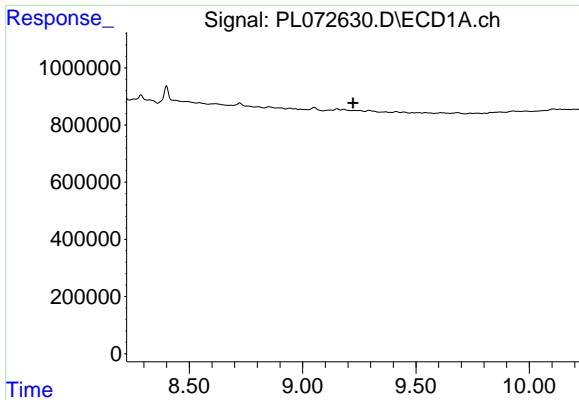
#19 Endosulfan Sulfate

R.T.: 8.723 min
 Delta R.T.: 0.018 min
 Response: 120286
 Conc: 0.20 ng/ml



#19 Endosulfan Sulfate

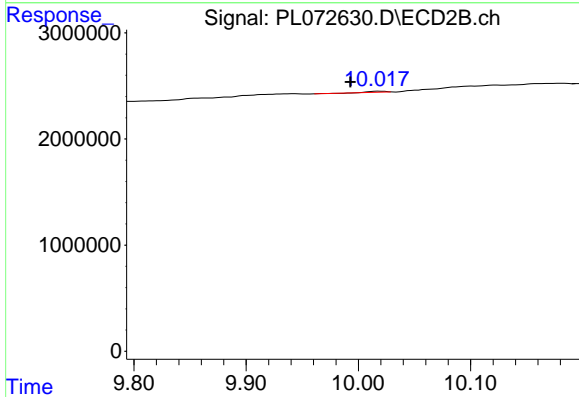
R.T.: 9.498 min
 Delta R.T.: 0.001 min
 Response: 83603
 Conc: 0.06 ng/ml



#21 Endrin ketone

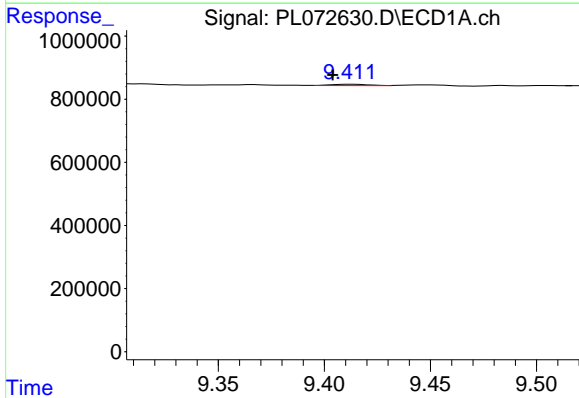
R.T.: 0.000 min
 Exp R.T.: 9.223 min
 Response: 0
 Conc: N.D.

Instrument :
 ECD_L
 ClientSampleId :



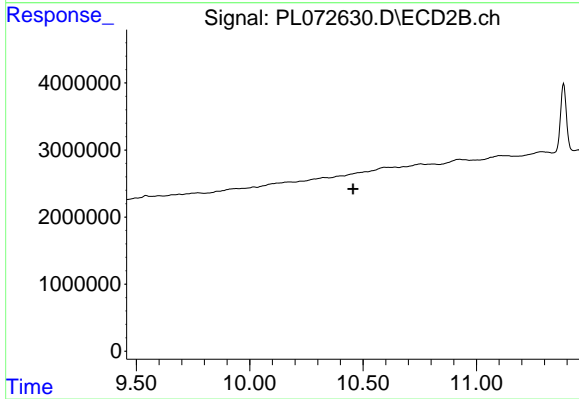
#21 Endrin ketone

R.T.: 10.019 min
 Delta R.T.: 0.026 min
 Response: 114786
 Conc: 0.07 ng/ml



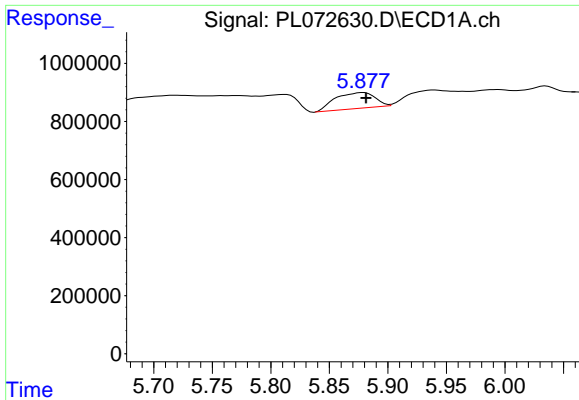
#22 Mirex

R.T.: 9.413 min
 Delta R.T.: 0.009 min
 Response: 51849
 Conc: 0.09 ng/ml



#22 Mirex

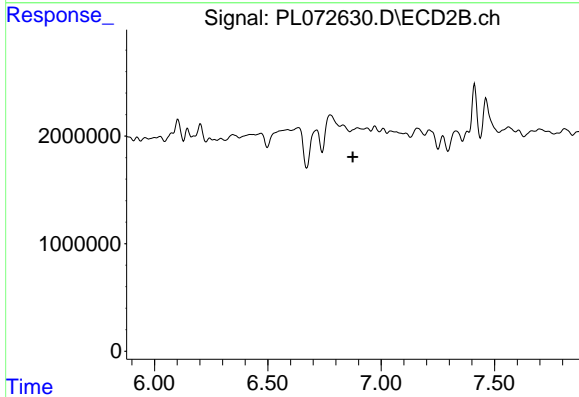
R.T.: 0.000 min
 Exp R.T.: 10.456 min
 Response: 0
 Conc: N.D.



#23 Chlordane-1

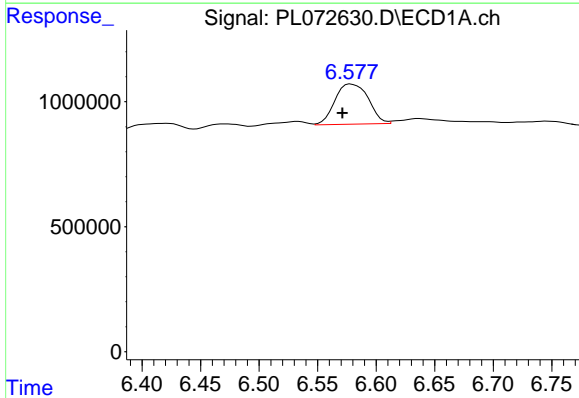
R.T.: 5.879 min
 Delta R.T.: -0.002 min
 Response: 1293608
 Conc: 69.70 ng/ml

Instrument :
 ECD_L
 ClientSampleId :



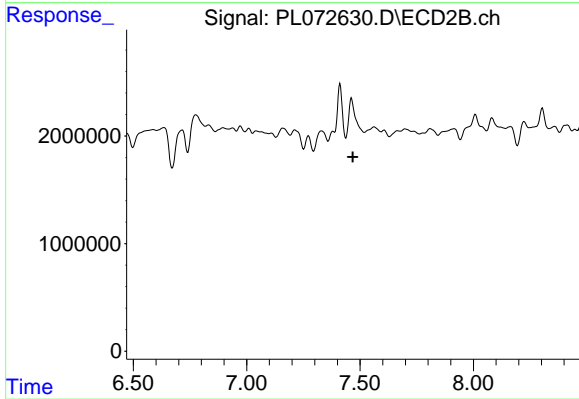
#23 Chlordane-1

R.T.: 6.896 min
 Delta R.T.: 0.022 min
 Response: -442970
 Conc: N.D.



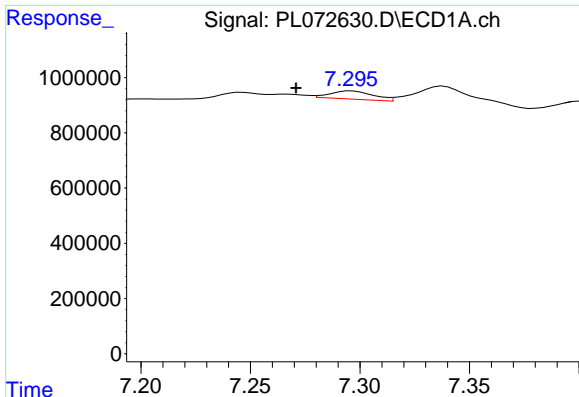
#24 Chlordane-2

R.T.: 6.578 min
 Delta R.T.: 0.007 min
 Response: 3200234
 Conc: 126.56 ng/ml



#24 Chlordane-2

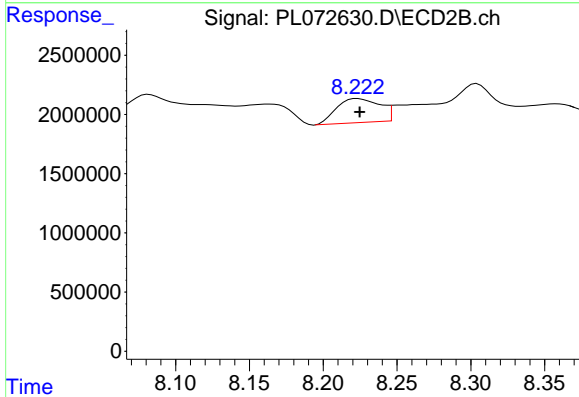
R.T.: 0.000 min
 Exp R.T. : 7.467 min
 Response: 0
 Conc: N.D.



#25 Chlordane-3

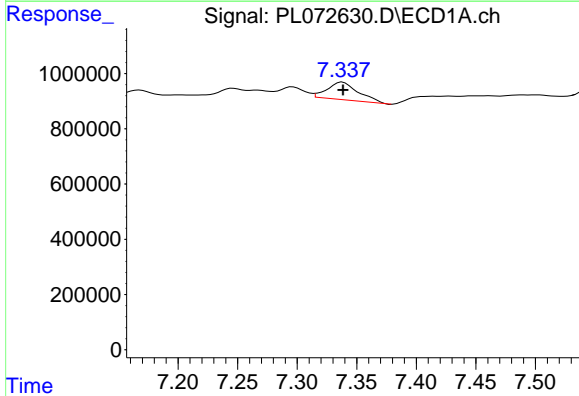
R.T.: 7.296 min
 Delta R.T.: 0.025 min
 Response: 411086
 Conc: 6.10 ng/ml

Instrument :
 ECD_L
 ClientSampleId :



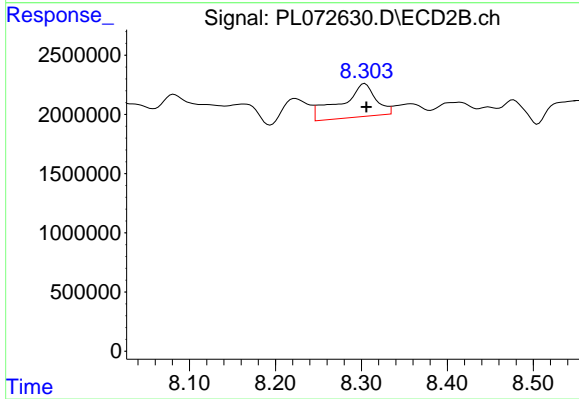
#25 Chlordane-3

R.T.: 8.223 min
 Delta R.T.: -0.001 min
 Response: 4131852
 Conc: 13.83 ng/ml



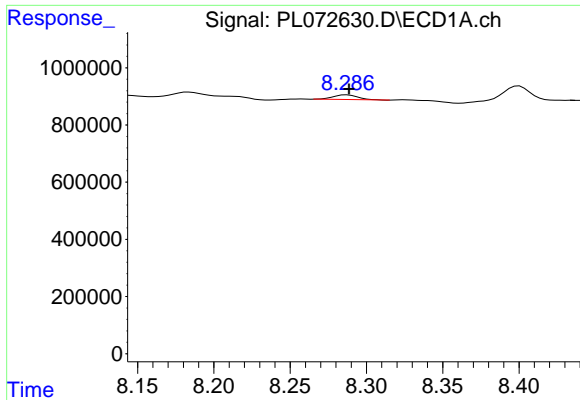
#26 Chlordane-4

R.T.: 7.338 min
 Delta R.T.: 0.000 min
 Response: 1163661
 Conc: 15.86 ng/ml



#26 Chlordane-4

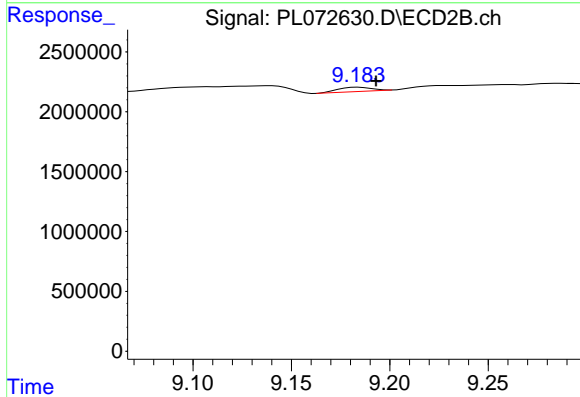
R.T.: 8.304 min
 Delta R.T.: -0.002 min
 Response: 7965955
 Conc: 22.33 ng/ml



#27 Chlordane-5

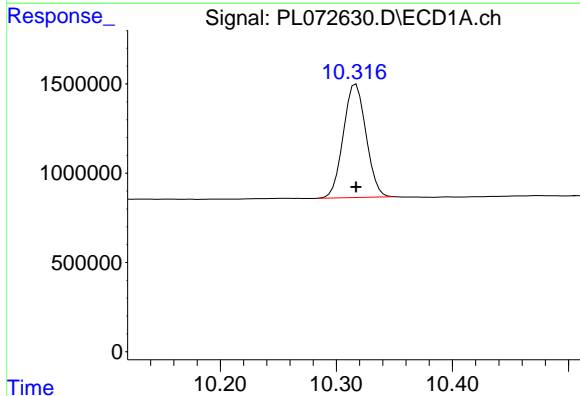
R.T.: 8.287 min
 Delta R.T.: -0.001 min
 Response: 185893
 Conc: 7.25 ng/ml

Instrument :
 ECD_L
 ClientSampleId :



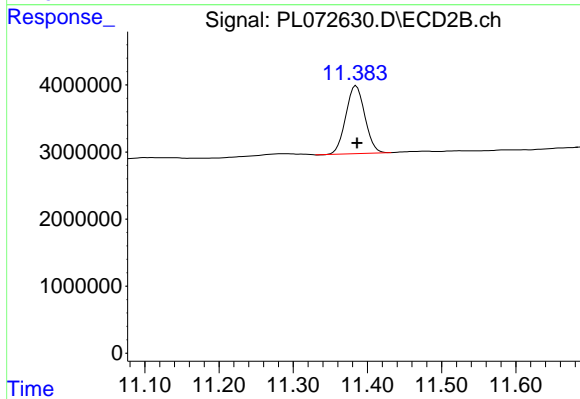
#27 Chlordane-5

R.T.: 9.184 min
 Delta R.T.: -0.009 min
 Response: 422391
 Conc: 6.91 ng/ml



#28 Decachlorobiphenyl

R.T.: 10.317 min
 Delta R.T.: 0.000 min
 Response: 8648761
 Conc: 11.42 ng/ml



#28 Decachlorobiphenyl

R.T.: 11.385 min
 Delta R.T.: -0.001 min
 Response: 18031684
 Conc: 11.37 ng/ml