

Data Path : Z:\pestpcbsrv\HPCHEM1\ECD\_L\Data\PL021419\  
 Data File : PL044808.D  
 Signal(s) : Signal #1: ECD1A.ch Signal #2: ECD2B.ch  
 Acq On : 14 Feb 2019 14:15  
 Operator : AJ\SJ  
 Sample : PB117104BS  
 Misc :  
 ALS Vial : 6 Sample Multiplier: 1

**Instrument :**  
 ECD\_L  
**Client Sampled :**  
 PB117104BS

**Manual Integrations**  
**APPROVED**  
 Sohil  
 2/15/2019 8:51:00 AM

Integration File signal 1: autoint1.e  
 Integration File signal 2: autoint2.e  
 Quant Time: Feb 14 22:07:22 2019  
 Quant Method : Z:\pestpcbsrv\HPCHEM1\ECD\_L\methods\PL020619.M  
 Quant Title : GC Extractables  
 QLast Update : Thu Feb 07 01:39:50 2019  
 Response via : Initial Calibration  
 Integrator: ChemStation

Volume Inj. : 2 µl  
 Signal #1 Phase : ZB-MR1 Signal #2 Phase: ZB-MR2  
 Signal #1 Info : 30M x 0.32mm x0.5 Signal #2 Info : 30M x 0.32mm x0.25µm

Compound	RT#1	RT#2	Resp#1	Resp#2	ng/ml	ng/ml
-----						
System Monitoring Compounds						
1) SA Tetrachlo...	3.365	3.984	117.2E6	39893529	16.469	16.982
28) SA Decachlor...	8.049	9.045	136.2E6	40494443	18.670	18.283
Target Compounds						
2) A alpha-BHC	3.796	4.375	512.5E6	142.8E6	47.981	46.888
3) MA gamma-BHC...	4.073	4.659	473.2E6	134.0E6	48.098	46.244
4) MA Heptachlor	4.361	5.167	489.7E6	138.3E6	47.532	45.387
5) MB Aldrin	4.602	5.471	462.2E6	126.3E6	48.018	45.562
6) B beta-BHC	4.326	4.831	199.9E6	61464169	47.316	46.388
7) B delta-BHC	4.522	5.047	399.3E6	101.4E6	49.598	55.436
8) B Heptachlor...	5.039	5.857	439.6E6	121.9E6	47.244	48.739
9) A Endosulfan I	5.372	6.214	413.5E6	113.9E6	47.377	45.038
10) B gamma-Chl...	5.263	6.092	452.2E6	124.8E6	46.854	44.950
11) B alpha-Chl...	5.319	6.164	443.1E6	123.8E6	46.347	44.685
12) B 4,4'-DDE	5.487	6.322	414.6E6	109.7E6	47.806	45.927
13) MA Dieldrin	5.612	6.470	444.9E6	118.2E6	47.398	45.835
14) MA Endrin	5.865	6.688	396.1E6	97394368	45.211	43.346
15) B Endosulfa...	6.140	6.898	395.0E6	108.0E6	46.710	46.884
16) A 4,4'-DDD	5.998	6.812	374.8E6	98429906	51.814	51.261
17) MA 4,4'-DDT	6.234	7.110	291.6E6	78526395	40.659	40.027
18) B Endrin al...	6.306	7.022	331.7E6	92976336	47.322	45.826
19) B Endosulfa...	6.518	7.245	348.8E6	96582896	47.985	45.775
20) A Methoxychlor	6.779	7.568	168.0E6	47069113	41.870	39.398
21) B Endrin ke...	7.000	7.714	443.2E6	110.1E6	53.267m	48.514
-----						

(f)=RT Delta > 1/2 Window (#)=Amounts differ by > 25% (m)=manual int.

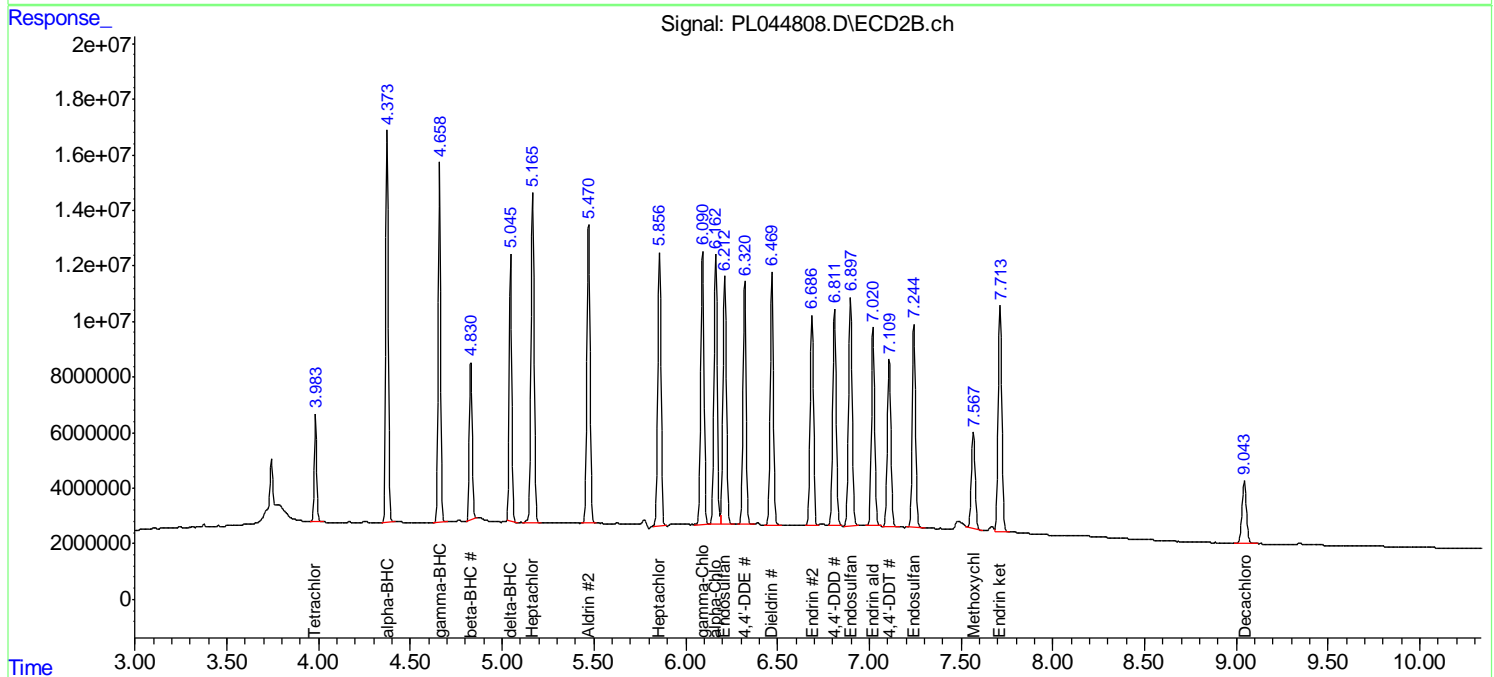
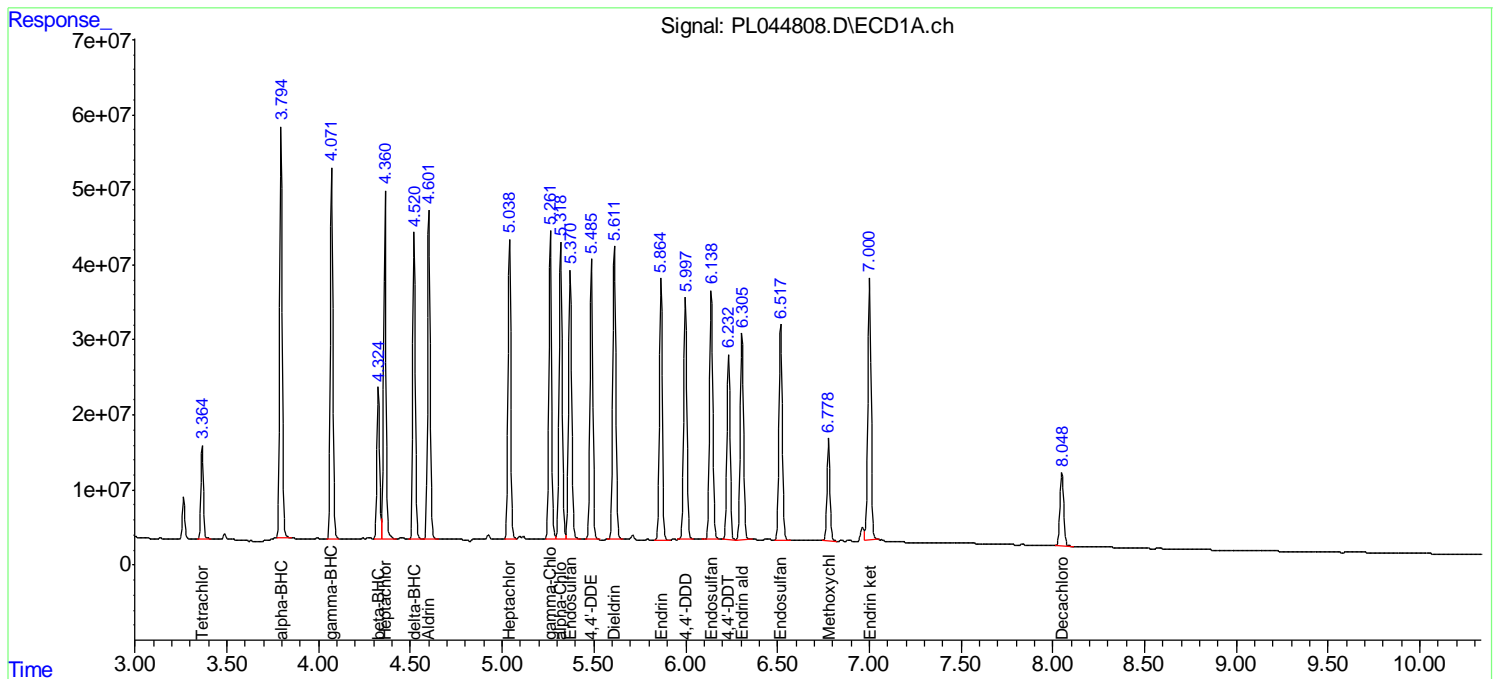
Data Path : Z:\pestpcbsrv\HPCHEM1\ECD\_L\Data\PL021419\  
 Data File : PL044808.D  
 Signal(s) : Signal #1: ECD1A.ch Signal #2: ECD2B.ch  
 Acq On : 14 Feb 2019 14:15  
 Operator : AJ\SJ  
 Sample : PB117104BS  
 Misc :  
 ALS Vial : 6 Sample Multiplier: 1

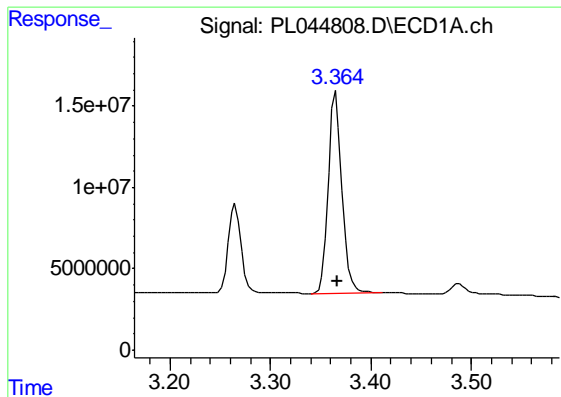
**Instrument :**  
 ECD\_L  
**Client Sampled :**  
 PB117104BS

**Manual Integrations**  
**APPROVED**  
 Sohil  
 2/15/2019 8:51:00 AM

Integration File signal 1: autoint1.e  
 Integration File signal 2: autoint2.e  
 Quant Time: Feb 14 22:07:22 2019  
 Quant Method : Z:\pestpcbsrv\HPCHEM1\ECD\_L\methods\PL020619.M  
 Quant Title : GC Extractables  
 QLast Update : Thu Feb 07 01:39:50 2019  
 Response via : Initial Calibration  
 Integrator: ChemStation

Volume Inj. : 2 µl  
 Signal #1 Phase : ZB-MR1 Signal #2 Phase: ZB-MR2  
 Signal #1 Info : 30M x 0.32mm x0.5 Signal #2 Info : 30M x 0.32mm x0.25µm





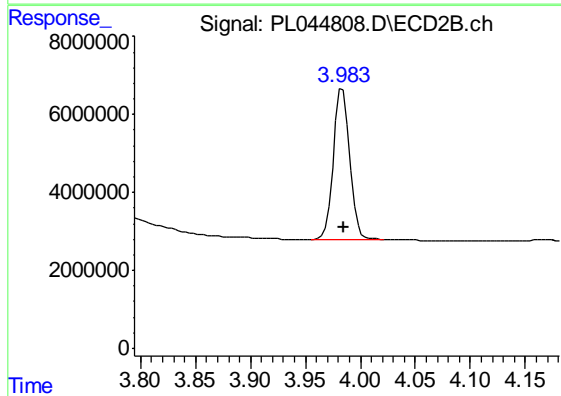
#1 Tetrachloro-m-xylene

R.T.: 3.365 min  
Delta R.T.: 0.000 min  
Response: 117191655  
Conc: 16.47 ng/ml

Instrument :  
ECD\_L  
ClientSampled :  
PB117104BS

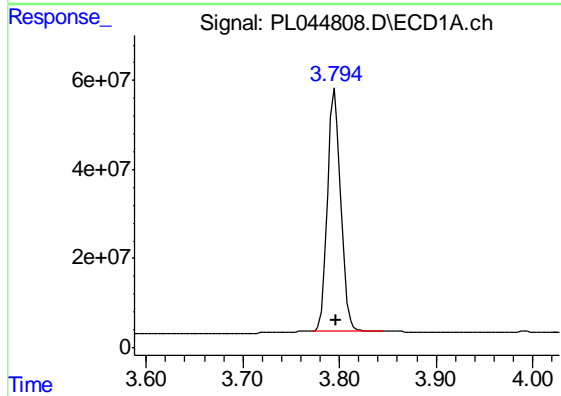
Manual Integrations  
APPROVED

Sohil  
2/15/2019 8:51:00 AM



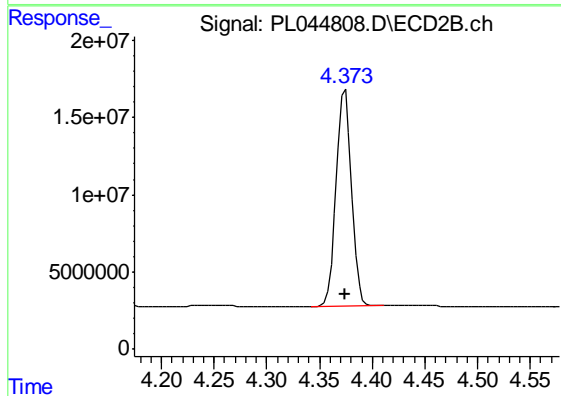
#1 Tetrachloro-m-xylene

R.T.: 3.984 min  
Delta R.T.: -0.001 min  
Response: 39893529  
Conc: 16.98 ng/ml



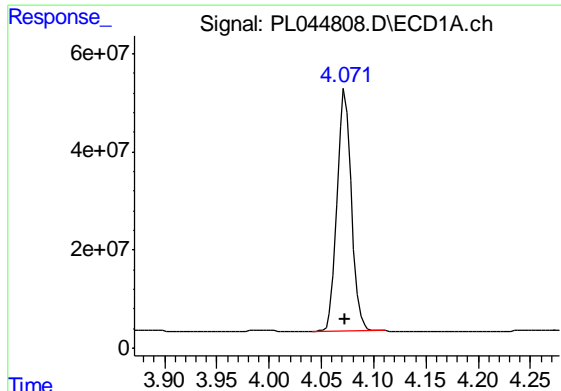
#2 alpha-BHC

R.T.: 3.796 min  
Delta R.T.: 0.000 min  
Response: 512452540  
Conc: 47.98 ng/ml



#2 alpha-BHC

R.T.: 4.375 min  
Delta R.T.: 0.000 min  
Response: 142827994  
Conc: 46.89 ng/ml



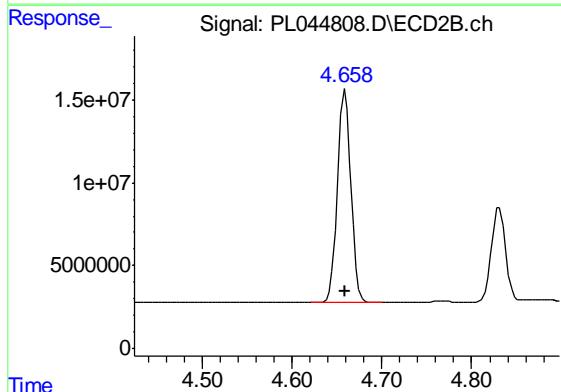
#3 gamma-BHC (Lindane)

R.T.: 4.073 min  
 Delta R.T.: 0.000 min  
 Response: 473217197  
 Conc: 48.10 ng/ml

Instrument :  
 ECD\_L  
 ClientSampled :  
 PB117104BS

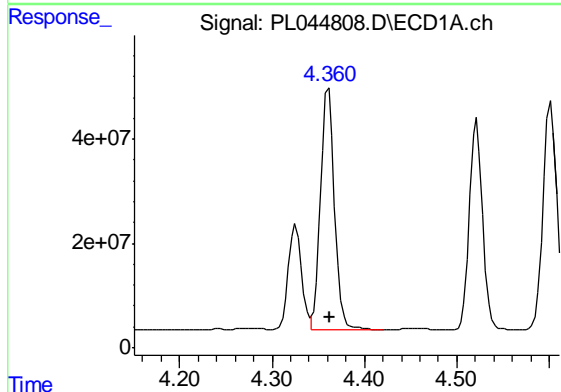
Manual Integrations  
 APPROVED

Sohil  
 2/15/2019 8:51:00 AM



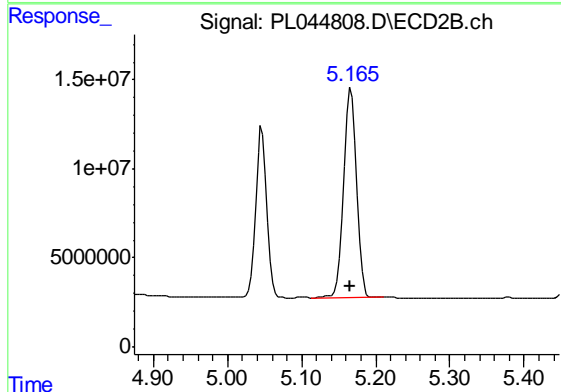
#3 gamma-BHC (Lindane)

R.T.: 4.659 min  
 Delta R.T.: 0.000 min  
 Response: 133975509  
 Conc: 46.24 ng/ml



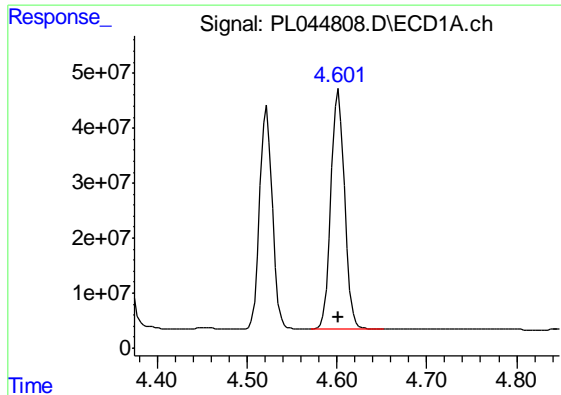
#4 Heptachlor

R.T.: 4.361 min  
 Delta R.T.: 0.000 min  
 Response: 489650508  
 Conc: 47.53 ng/ml



#4 Heptachlor

R.T.: 5.167 min  
 Delta R.T.: 0.000 min  
 Response: 138251176  
 Conc: 45.39 ng/ml

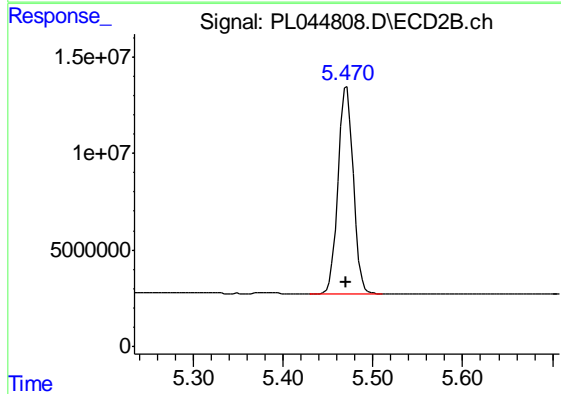


#5 Aldrin

R.T.: 4.602 min  
 Delta R.T.: 0.000 min  
 Response: 462208224  
 Conc: 48.02 ng/ml

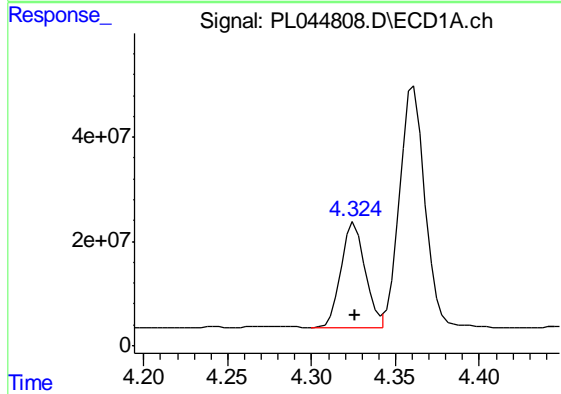
Instrument :  
 ECD\_L  
 ClientSampled :  
 PB117104BS

Manual Integrations  
 APPROVED  
 Sohil  
 2/15/2019 8:51:00 AM



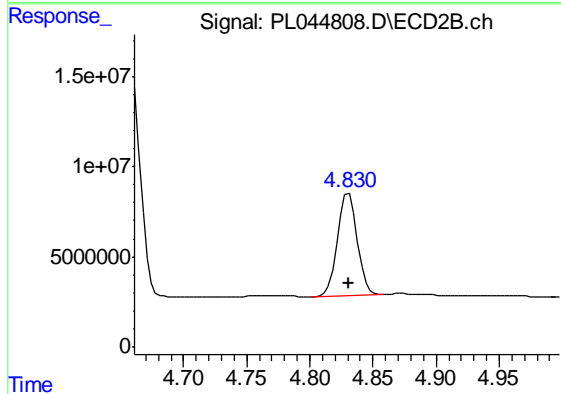
#5 Aldrin

R.T.: 5.471 min  
 Delta R.T.: 0.000 min  
 Response: 126255481  
 Conc: 45.56 ng/ml



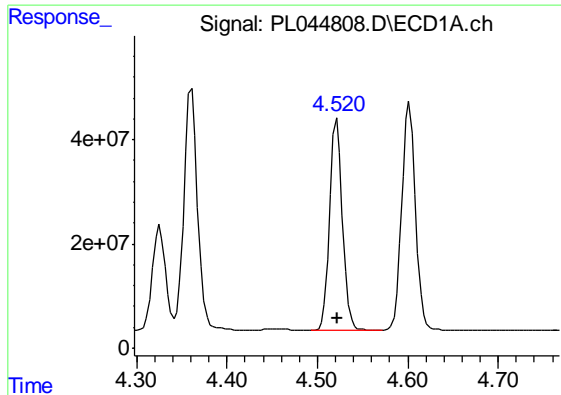
#6 beta-BHC

R.T.: 4.326 min  
 Delta R.T.: 0.000 min  
 Response: 199935752  
 Conc: 47.32 ng/ml



#6 beta-BHC

R.T.: 4.831 min  
 Delta R.T.: 0.000 min  
 Response: 61464169  
 Conc: 46.39 ng/ml



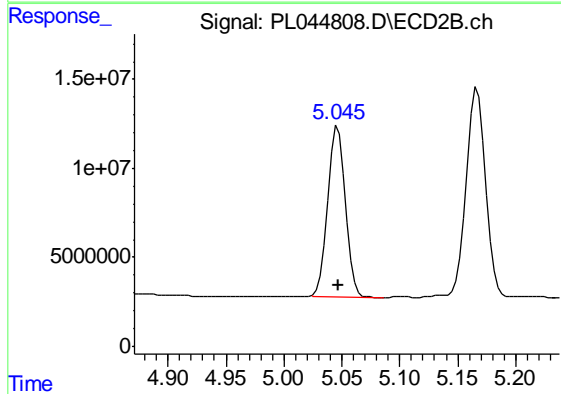
#7 delta-BHC

R.T.: 4.522 min  
 Delta R.T.: 0.000 min  
 Response: 399263156  
 Conc: 49.60 ng/ml

Instrument :  
 ECD\_L  
 ClientSampled :  
 PB117104BS

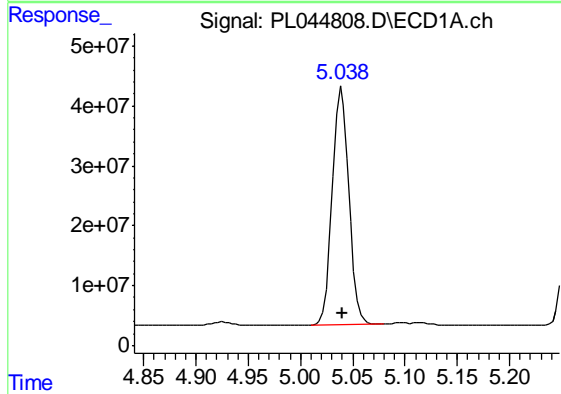
Manual Integrations  
 APPROVED

Sohil  
 2/15/2019 8:51:00 AM



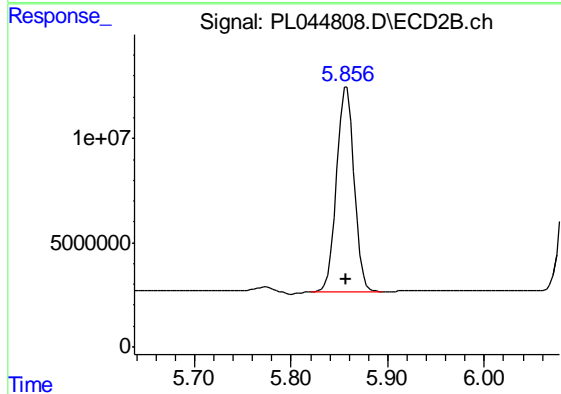
#7 delta-BHC

R.T.: 5.047 min  
 Delta R.T.: 0.000 min  
 Response: 101367625  
 Conc: 55.44 ng/ml



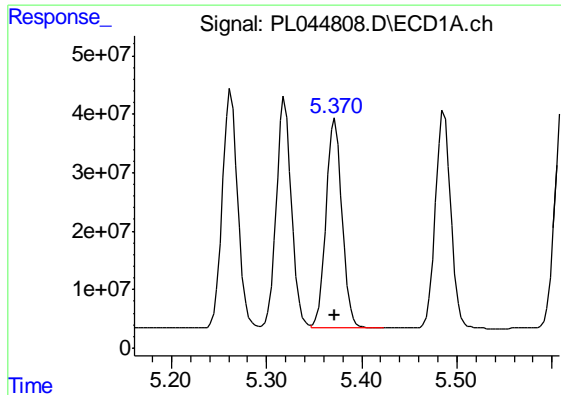
#8 Heptachlor epoxide

R.T.: 5.039 min  
 Delta R.T.: 0.000 min  
 Response: 439599616  
 Conc: 47.24 ng/ml



#8 Heptachlor epoxide

R.T.: 5.857 min  
 Delta R.T.: 0.000 min  
 Response: 121875319  
 Conc: 48.74 ng/ml



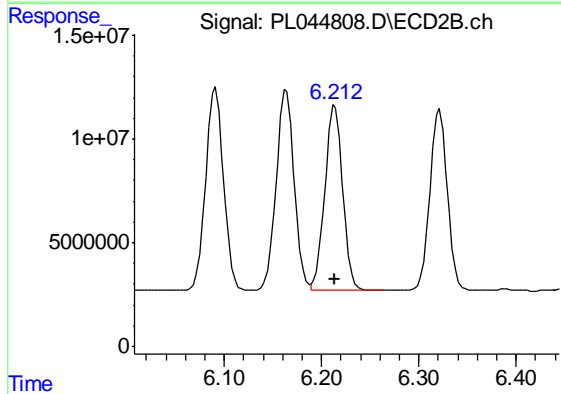
#9 Endosulfan I

R.T.: 5.372 min  
 Delta R.T.: 0.000 min  
 Response: 413454640  
 Conc: 47.38 ng/ml

Instrument :  
 ECD\_L  
 ClientSampled :  
 PB117104BS

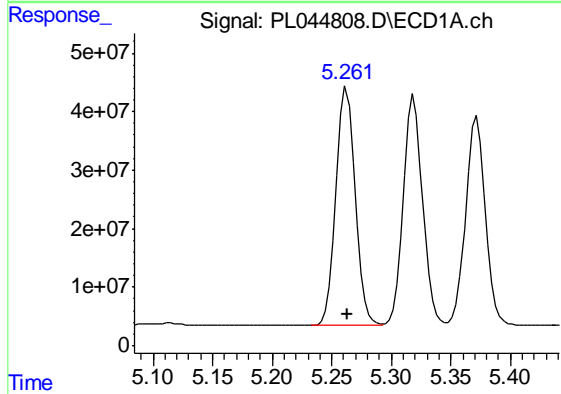
Manual Integrations  
 APPROVED

Sohil  
 2/15/2019 8:51:00 AM



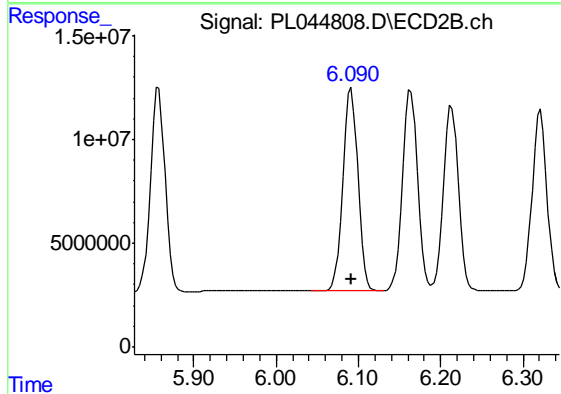
#9 Endosulfan I

R.T.: 6.214 min  
 Delta R.T.: 0.000 min  
 Response: 113939548  
 Conc: 45.04 ng/ml



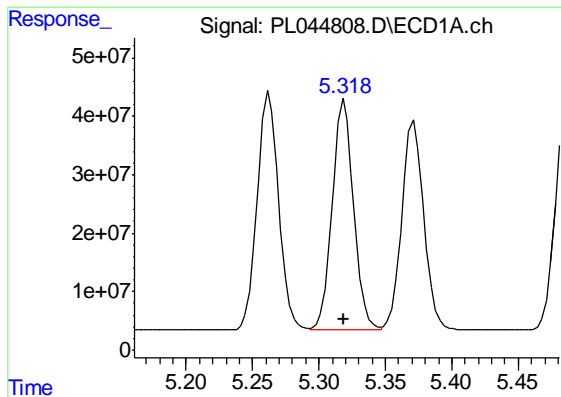
#10 gamma-Chlordane

R.T.: 5.263 min  
 Delta R.T.: 0.000 min  
 Response: 452193734  
 Conc: 46.85 ng/ml



#10 gamma-Chlordane

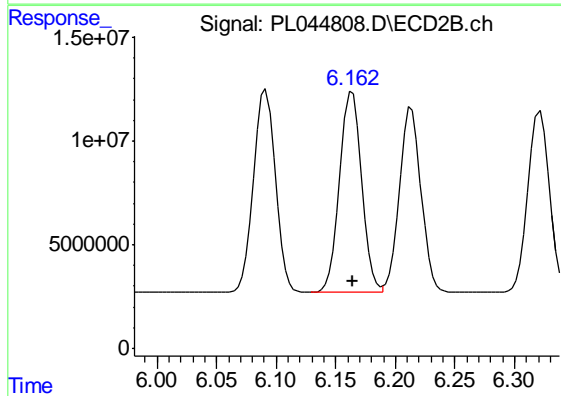
R.T.: 6.092 min  
 Delta R.T.: 0.000 min  
 Response: 124786551  
 Conc: 44.95 ng/ml



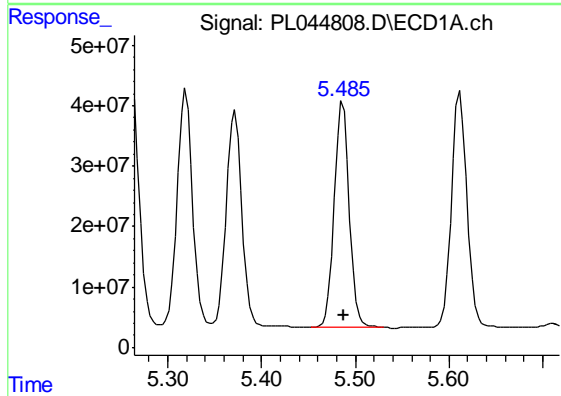
#11 alpha-Chlordane  
 R.T.: 5.319 min  
 Delta R.T.: 0.000 min  
 Response: 443137818  
 Conc: 46.35 ng/ml

Instrument :  
 ECD\_L  
 ClientSampled :  
 PB117104BS

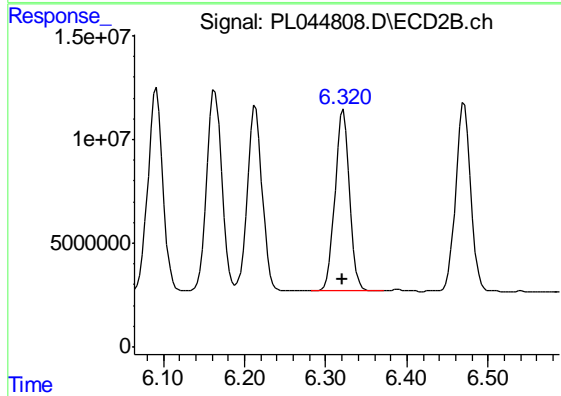
Manual Integrations  
 APPROVED  
 Sohil  
 2/15/2019 8:51:00 AM



#11 alpha-Chlordane  
 R.T.: 6.164 min  
 Delta R.T.: 0.000 min  
 Response: 123814312  
 Conc: 44.69 ng/ml

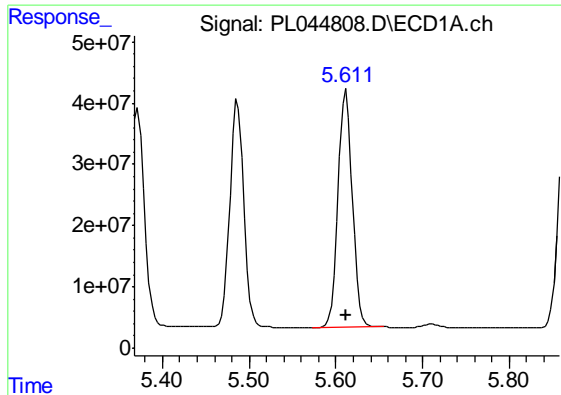


#12 4,4'-DDE  
 R.T.: 5.487 min  
 Delta R.T.: 0.000 min  
 Response: 414582443  
 Conc: 47.81 ng/ml



#12 4,4'-DDE  
 R.T.: 6.322 min  
 Delta R.T.: 0.000 min  
 Response: 109659155  
 Conc: 45.93 ng/ml

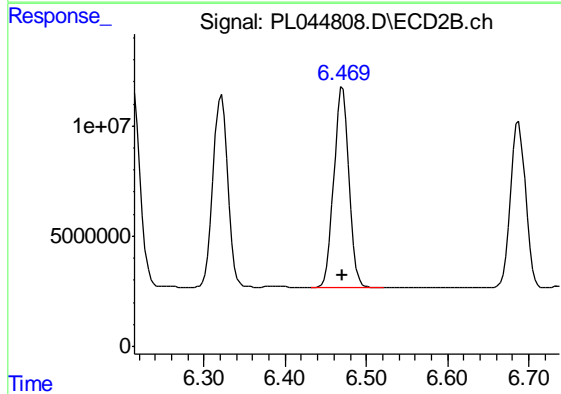




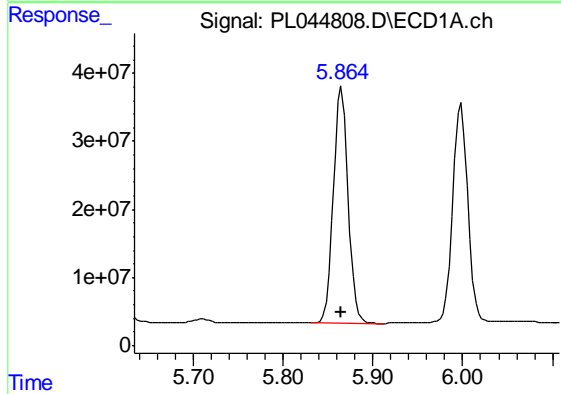
#13 Dieldrin  
 R.T.: 5.612 min  
 Delta R.T.: 0.000 min  
 Response: 444862147  
 Conc: 47.40 ng/ml

Instrument :  
 ECD\_L  
 ClientSampled :  
 PB117104BS

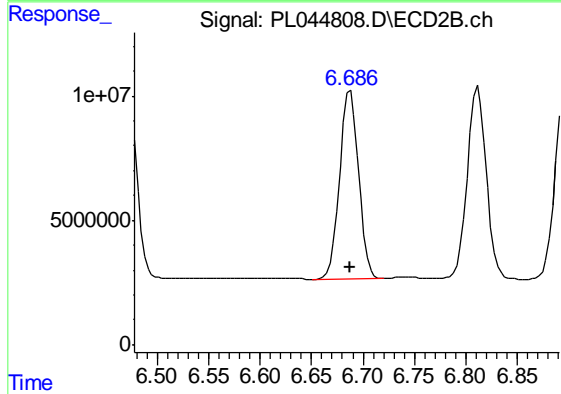
Manual Integrations  
 APPROVED  
 Sohil  
 2/15/2019 8:51:00 AM



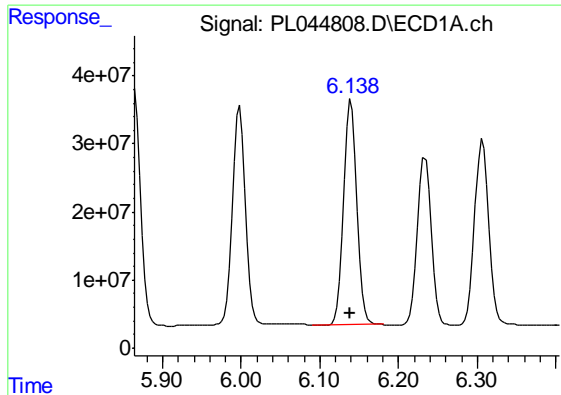
#13 Dieldrin  
 R.T.: 6.470 min  
 Delta R.T.: 0.000 min  
 Response: 118247760  
 Conc: 45.83 ng/ml



#14 Endrin  
 R.T.: 5.865 min  
 Delta R.T.: 0.000 min  
 Response: 396054595  
 Conc: 45.21 ng/ml



#14 Endrin  
 R.T.: 6.688 min  
 Delta R.T.: 0.000 min  
 Response: 97394368  
 Conc: 43.35 ng/ml



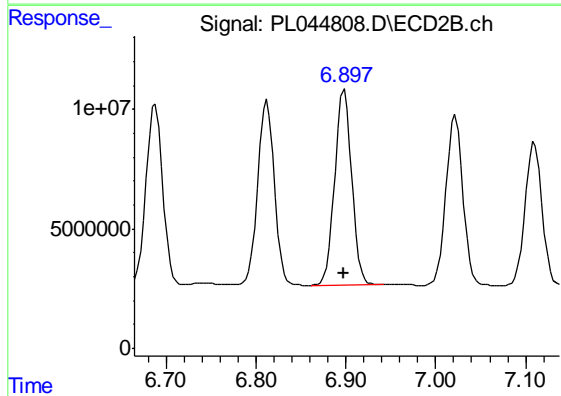
#15 Endosulfan II

R.T.: 6.140 min  
 Delta R.T.: 0.000 min  
 Response: 394965675  
 Conc: 46.71 ng/ml

Instrument :  
 ECD\_L  
 ClientSampled :  
 PB117104BS

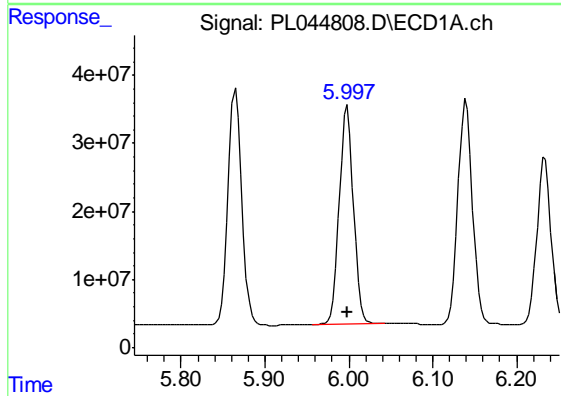
Manual Integrations  
 APPROVED

Sohil  
 2/15/2019 8:51:00 AM



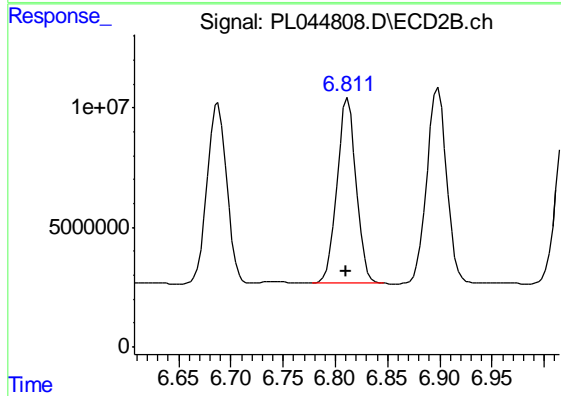
#15 Endosulfan II

R.T.: 6.898 min  
 Delta R.T.: 0.001 min  
 Response: 107984783  
 Conc: 46.88 ng/ml



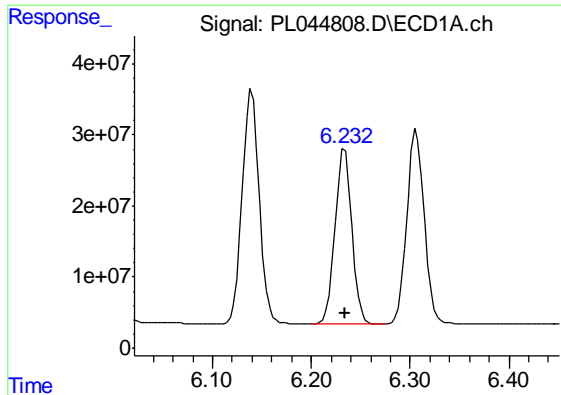
#16 4,4'-DDD

R.T.: 5.998 min  
 Delta R.T.: 0.000 min  
 Response: 374835034  
 Conc: 51.81 ng/ml



#16 4,4'-DDD

R.T.: 6.812 min  
 Delta R.T.: 0.001 min  
 Response: 98429906  
 Conc: 51.26 ng/ml



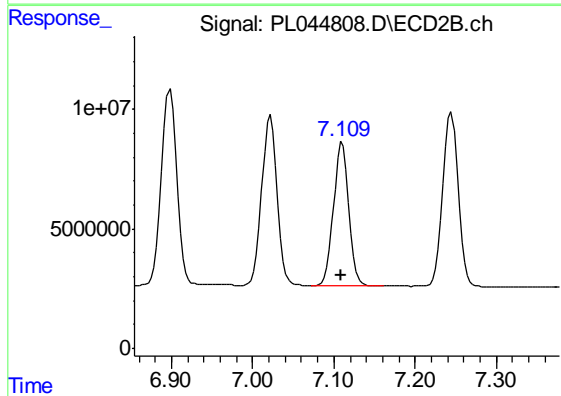
#17 4,4'-DDT

R.T.: 6.234 min  
 Delta R.T.: 0.000 min  
 Response: 291582675  
 Conc: 40.66 ng/ml

Instrument :  
 ECD\_L  
 ClientSampled :  
 PB117104BS

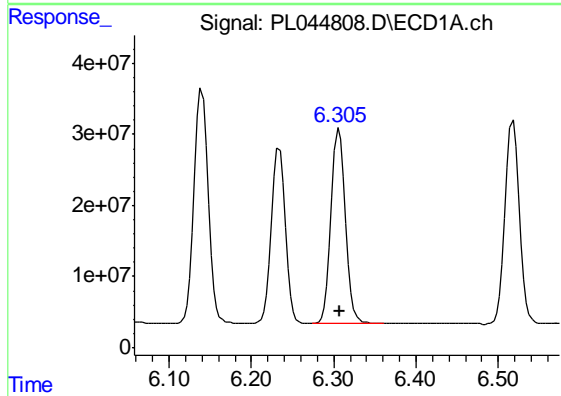
Manual Integrations  
 APPROVED

Sohil  
 2/15/2019 8:51:00 AM



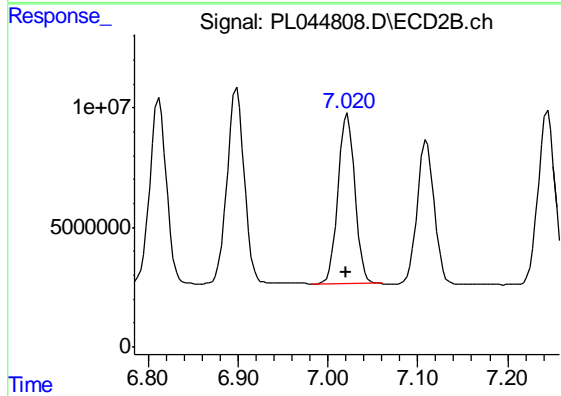
#17 4,4'-DDT

R.T.: 7.110 min  
 Delta R.T.: 0.001 min  
 Response: 78526395  
 Conc: 40.03 ng/ml



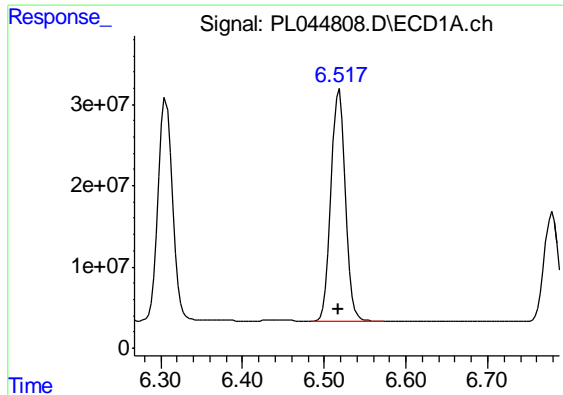
#18 Endrin aldehyde

R.T.: 6.306 min  
 Delta R.T.: 0.000 min  
 Response: 331746737  
 Conc: 47.32 ng/ml



#18 Endrin aldehyde

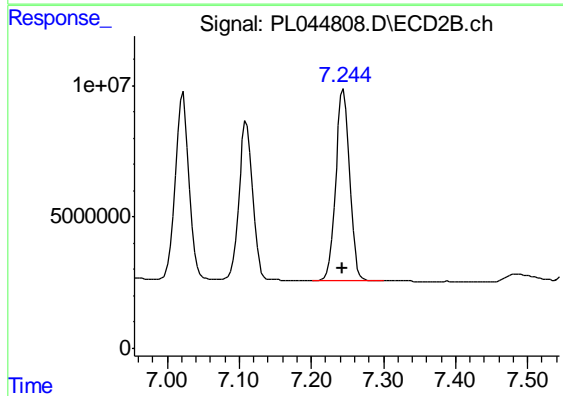
R.T.: 7.022 min  
 Delta R.T.: 0.000 min  
 Response: 92976336  
 Conc: 45.83 ng/ml



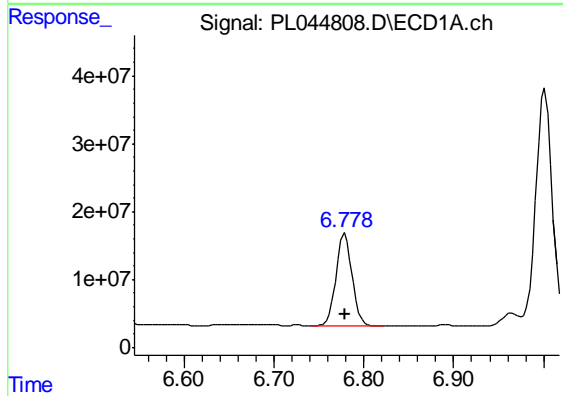
#19 Endosulfan Sulfate  
 R.T.: 6.518 min  
 Delta R.T.: 0.001 min  
 Response: 348751037  
 Conc: 47.99 ng/ml

Instrument :  
 ECD\_L  
 ClientSampled :  
 PB117104BS

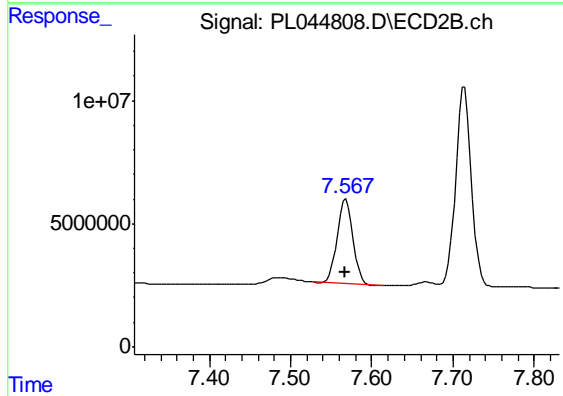
Manual Integrations  
 APPROVED  
 Sohil  
 2/15/2019 8:51:00 AM



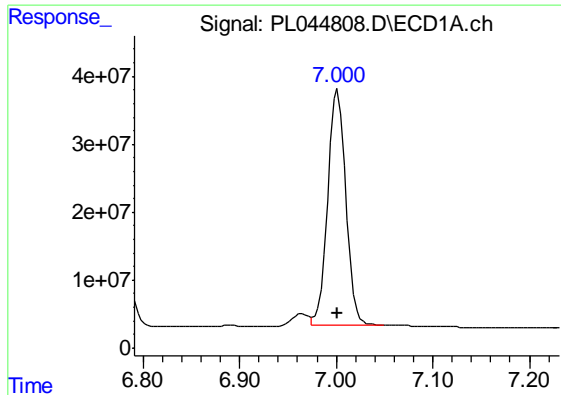
#19 Endosulfan Sulfate  
 R.T.: 7.245 min  
 Delta R.T.: 0.002 min  
 Response: 96582896  
 Conc: 45.77 ng/ml



#20 Methoxychlor  
 R.T.: 6.779 min  
 Delta R.T.: 0.000 min  
 Response: 168027900  
 Conc: 41.87 ng/ml



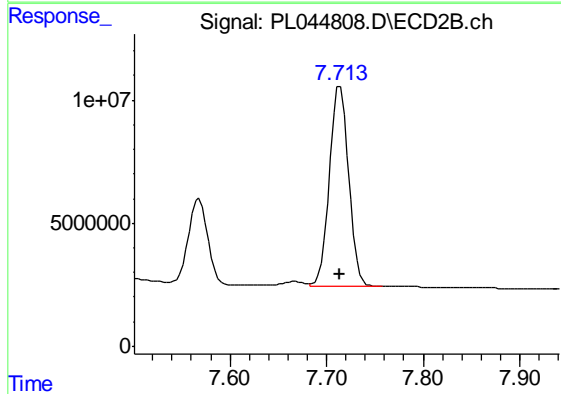
#20 Methoxychlor  
 R.T.: 7.568 min  
 Delta R.T.: 0.001 min  
 Response: 47069113  
 Conc: 39.40 ng/ml



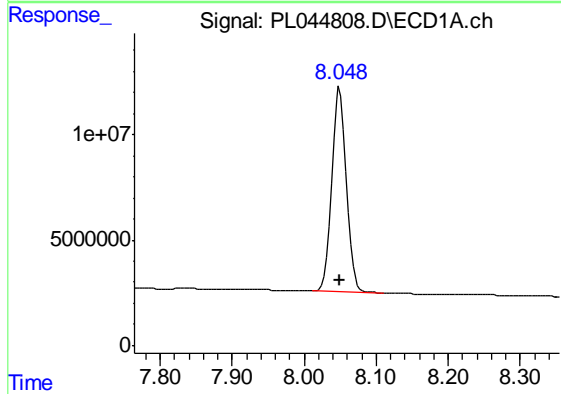
#21 Endrin ketone  
 R.T.: 7.000 min  
 Delta R.T.: 0.000 min  
 Response: 443190245  
 Conc: 53.27 ng/ml m

Instrument :  
 ECD\_L  
 ClientSampled :  
 PB117104BS

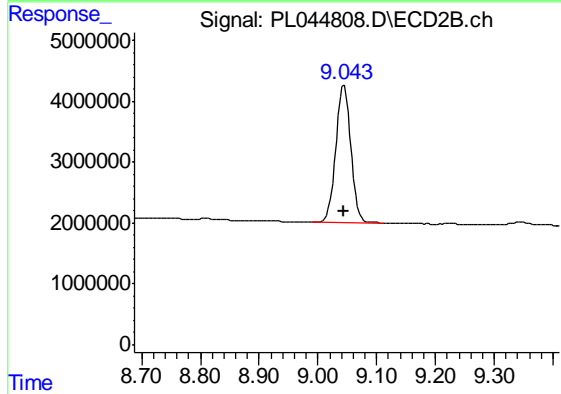
Manual Integrations  
 APPROVED  
 Sohil  
 2/15/2019 8:51:00 AM



#21 Endrin ketone  
 R.T.: 7.714 min  
 Delta R.T.: 0.000 min  
 Response: 110105190  
 Conc: 48.51 ng/ml



#28 Decachlorobiphenyl  
 R.T.: 8.049 min  
 Delta R.T.: 0.000 min  
 Response: 136170535  
 Conc: 18.67 ng/ml



#28 Decachlorobiphenyl  
 R.T.: 9.045 min  
 Delta R.T.: 0.002 min  
 Response: 40494443  
 Conc: 18.28 ng/ml